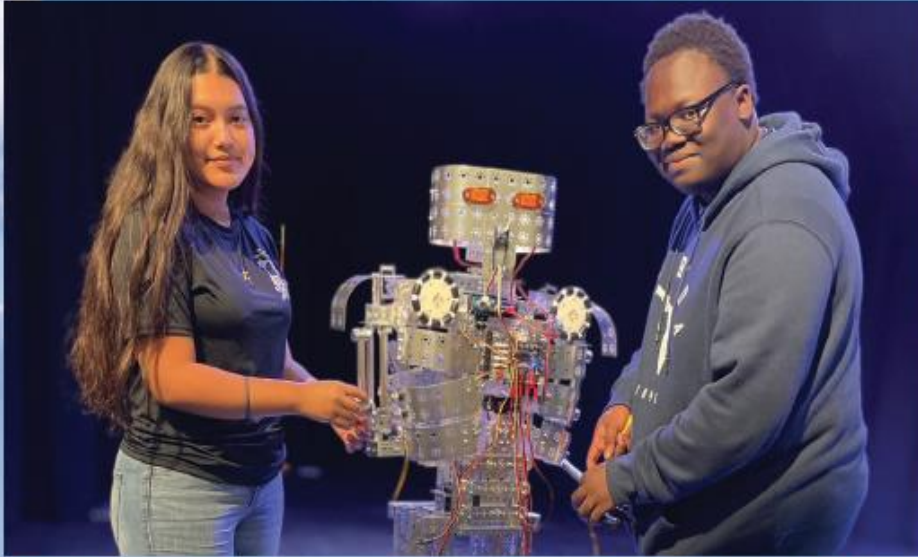


ST. LUCIE PUBLIC SCHOOLS TAKE A CLOSER LOOK

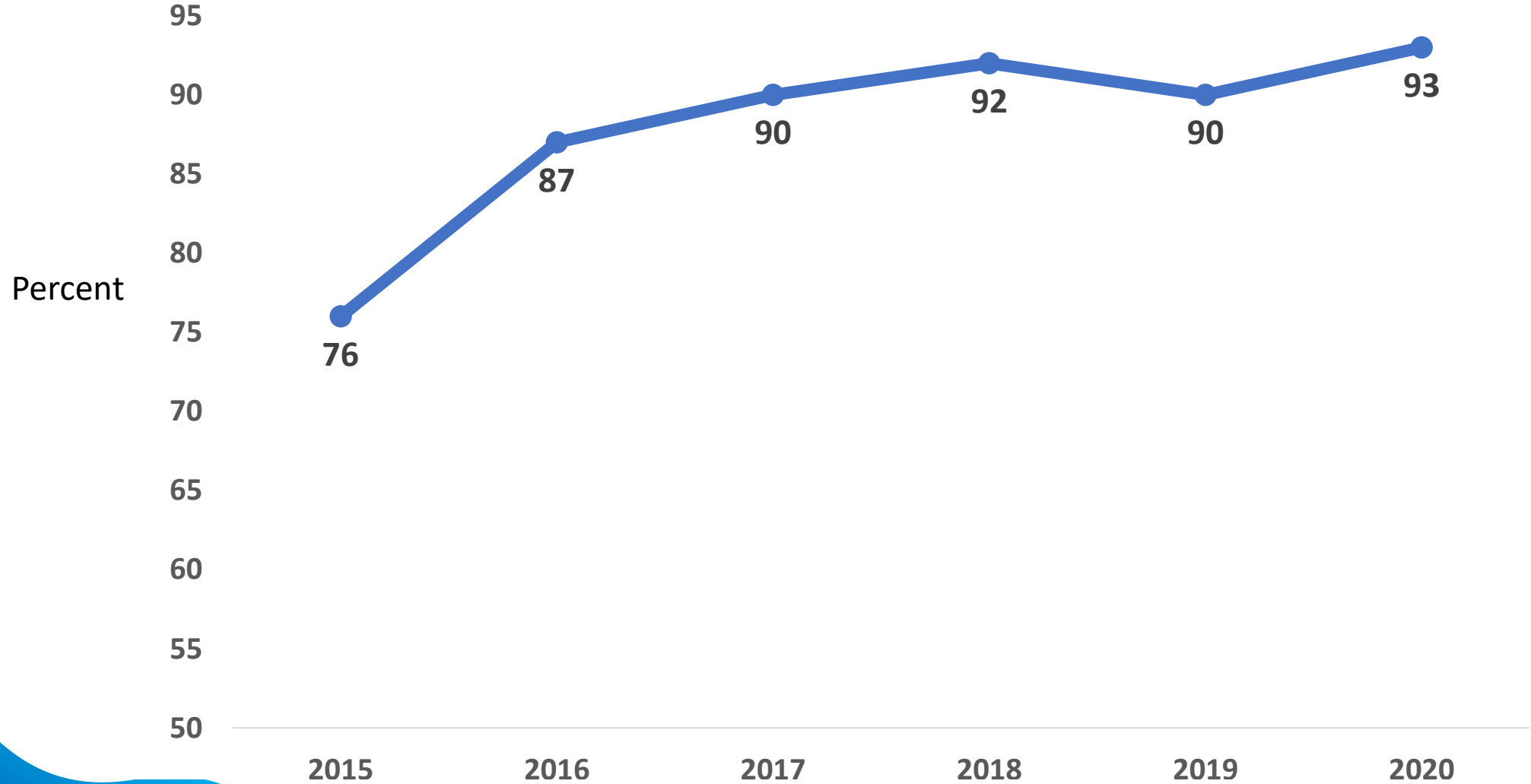




Graduation Rates

	Grad Rate 2019	Grad Rate 2020	Difference
SLPS	90.4%	93.2%	+2.8%
Comprehensive High Schools	96.8%	98.3%	+1.5%

Graduation Rates



District Comparisons-Graduation Rates



District	Graduation Rate	Number of Graduates
1. Lafayette	97.7%	88
2. Columbia	95.4%	674
3. St. Johns	94.8%	3,111
4. Seminole	94.5%	5,155
5. Leon	94.4%	2,289
6. Wakulla	93.8%	355
7. Clay	93.4%	3,097
8. Holmes	93.4%	229
9. Indian River	93.4%	1,285
10. St. Lucie	93.2%	3,389
29. Orange	90.4%	13,612
31. Brevard	90.3%	5,120
32. Palm Beach	90.2%	13,469
34. Martin	90.2%	1,462
42. Miami-Dade	89.6%	23,669
45. Broward	89.4%	17,757

Treasure Coast Schools-Graduation Rates



School	Grad Rate
Treasure Coast High School	99.6%
Lincoln Park Academy	99.5%
St. Lucie West Centennial High School	98.8%
Fort Pierce Central High School	98.3%
*Somerset College Prep	98.1%
Port St. Lucie High School	97.0%
South Fork High School	96.5%
Fort Pierce Westwood High School	96.2%
Vero Beach High School	95.6%
Jensen Beach High School	95.1%
Martin County High School	94.5%
Sebastian River High School	91.4%

Treasure Coast Comprehensive High Schools Graduation Rates

County	Grad Rate
St. Lucie County	98.3%
Martin County	95.5%
Indian River County	93.5%

Subgroup Rankings-Graduation Rates



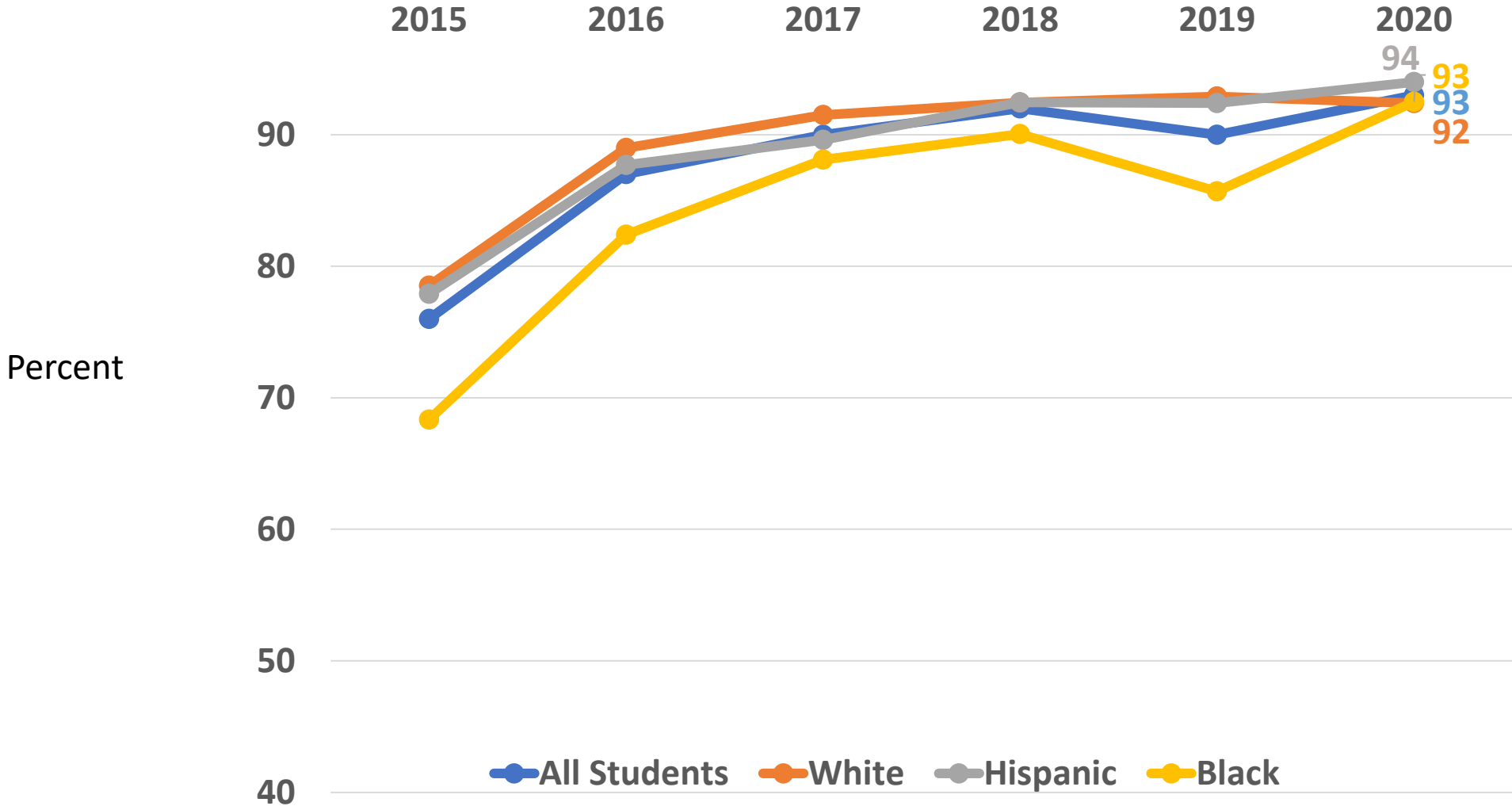
ESE Graduation Rate - 91.6%
9.0 % Higher Than The State Average

Hispanic Graduation Rate at 94%
5.0 % Higher Than The State Average

Black Graduation Rate - 92.5%
6.0 % Higher Than The State Average

White Graduation Rate – 92.4%
1.0 % Higher Than The State Average

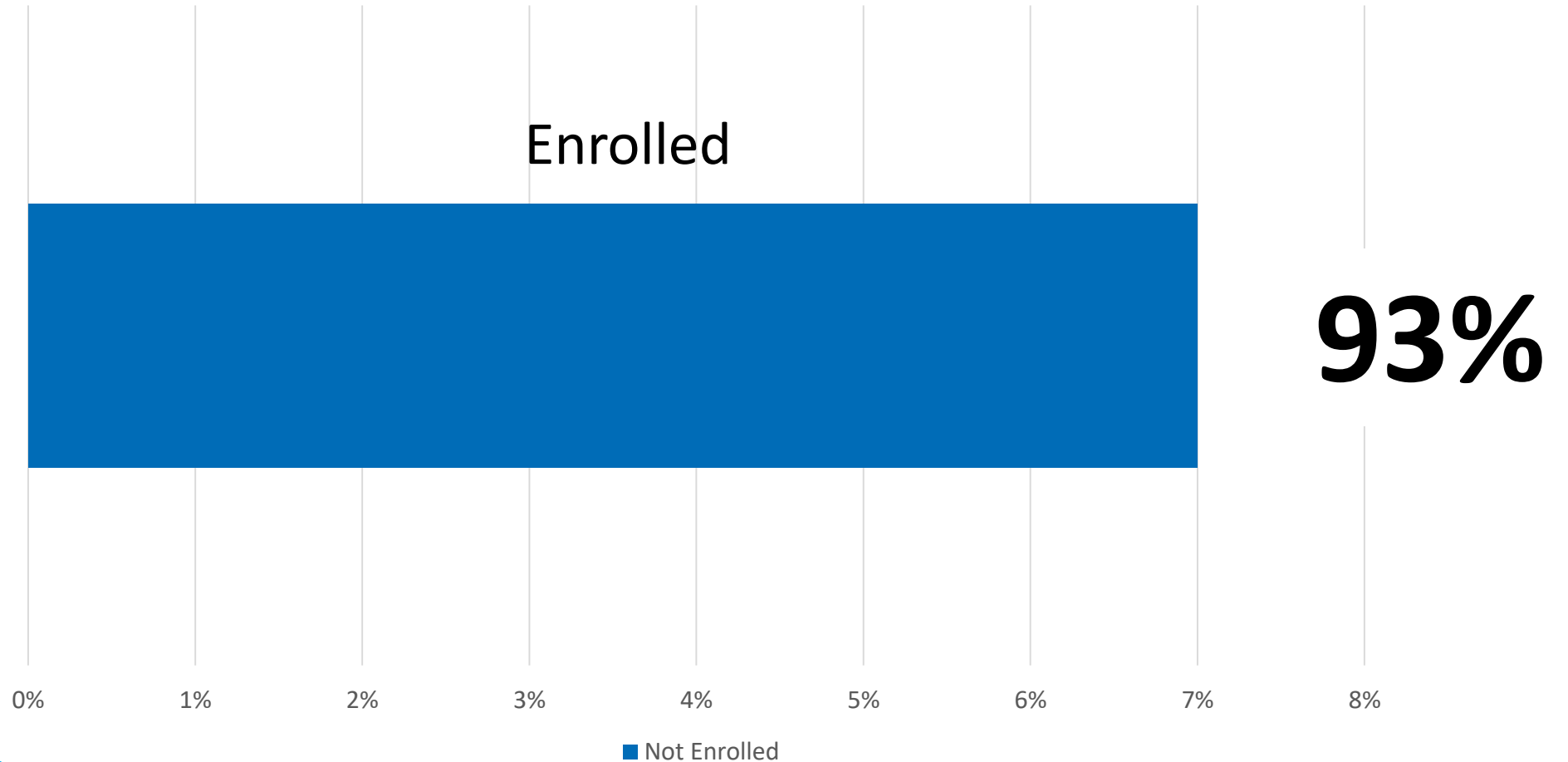
Graduation Rates-Closing the Gap



Increasing Career and College Readiness

**Top 10
in the
State!**

AP IB AICE DE CTE





Career & Technical Education

- ✓ **Students Earn Industry Certifications Qualifying for Entry-Level Employment Upon Graduation**
- ✓ **Students Earn College Credit While In High School Through Articulation Agreements Aligned to College Pathways**
- ✓ **Students Receive On-The-Job Training and Job Placement Assistance**



CTE

At-A-Glance

34 Career Academies
56 Programs

IRSC/SLPS: 47 Articulation Agreements =
College Credit

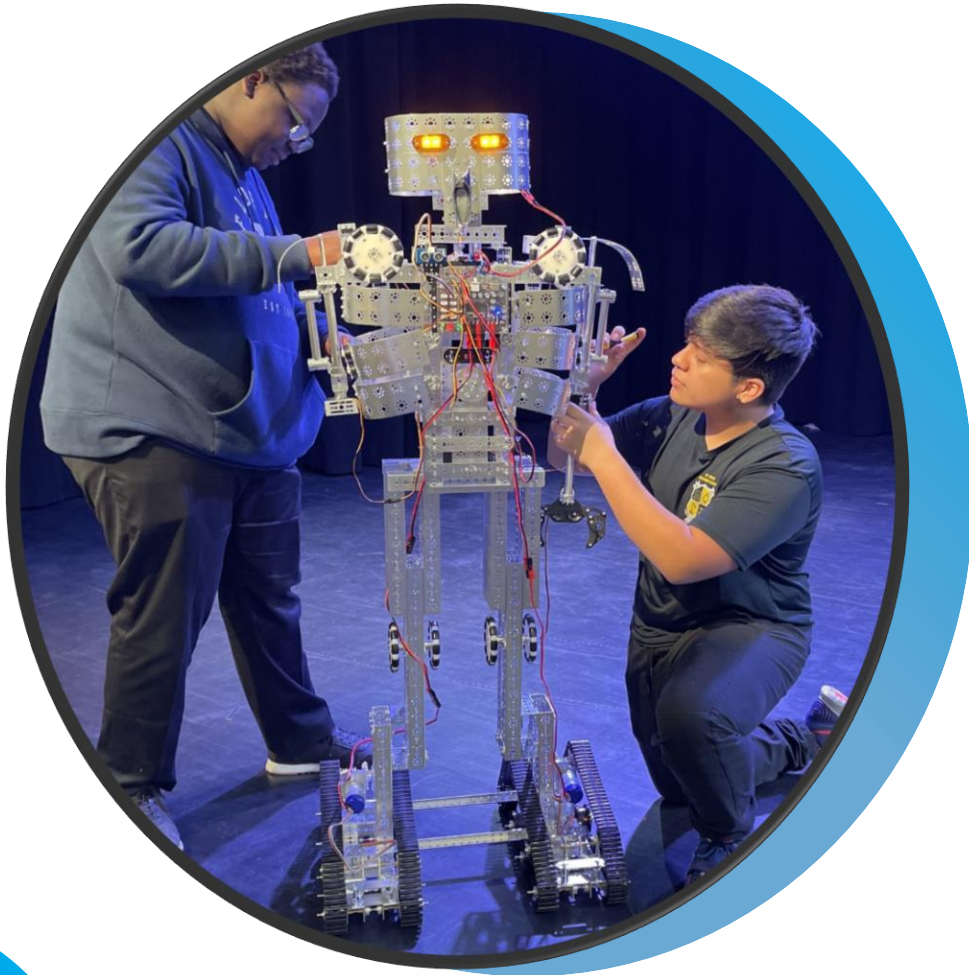
IRSC/SLPS: Dual Enrollment Post Secondary
Adult Vocational (PSAV) Partnerships

- ✓ Automotive
- ✓ Heating Ventilation and Air Conditioning (HVAC)
- ✓ Welding



CTE

Current High School Enrollment

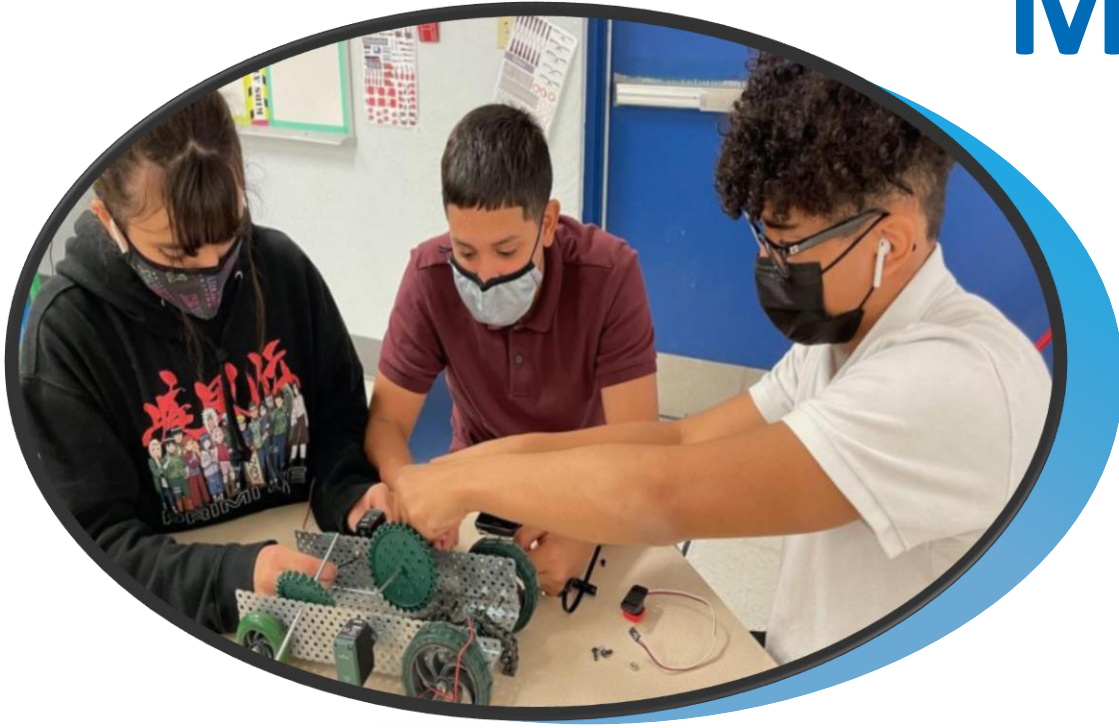


School Name	Total
Treasure Coast High	1679
Fort Pierce Central High	1599
Fort Pierce Westwood	1295
Port St Lucie High	1247
Performance Based	67
Lincoln Park Academy	240
St Lucie West Centennial	1721
Total	7848



CTE

Middle Grades



All Students: Career Planning Through Career Shines Program

- ✓ Interest/Aptitude Surveys
- ✓ Career Exploration

CTE/Elective Courses

- ✓ Information Technology
- ✓ Vet Prep
- ✓ Marine Oceanographic Academy Prep
- ✓ Family Consumer Science / Culinary
- ✓ Medical Skills / Allied Health
- ✓ Project Lead The Way Gateway (Biotech, Medical, Power Tech, Aerospace, Manufacturing)
- ✓ Project Lead The Way Launch

Digital Tools Certificates

High School CTE Programs

St. Lucie West Centennial High School
Early Childhood Ed.
Allied Health Assisting
Emerging Technology
Digital Video Technology
Culinary Arts
Accounting Applications
Criminal Justice
Game/Simulation/Animation
Visual Design
Academy of Finance
Digital Design
Outboard Marine Service Technology

Port Saint Lucie High School
Technical Design
Allied Health Assisting
Biomedical Sciences
Culinary Arts
Web Development
Automobile Maintenance & Light Repair
Fashion Marketing
Emerging Technologies in Business
Building Construction Technology
TV Production Technology

Treasure Coast High School
Digital Media/Multimedia Design
International Business
Engineering Technology
Allied Health Assisting
Industrial Biotechnology
Culinary Arts
Criminal Justice
Emerging Technology
JROTC Aerospace
Advanced Manufacturing Technology

High School CTE Programs

Fort Pierce Central High School
Allied Health Assisting
Aerospace and Aviation
Culinary Arts
Criminal Justice
Web Development
Game Simulation Animation and Visual Design
Automobile Maintenance & Light Repair
Sports, Recreation & Entertainment Marketing

Fort Pierce Westwood Academy
Agritechnology
Veterinary Assisting
Digital Media/Multimedia Design
Allied Health
Health Unit Coordinator
Pharmacy Technician
Exercise Science
Culinary Arts
Criminal Justice
Digital Design
Applied Robotics
Commercial Art Technology
Cybersecurity
Computer Science and Gaming

Lincoln Park Academy
Digital Media/Multimedia Design
Technical Design
Project Lead the Way (Pre-Engineering)

CTE: Industry Certifications

5 Year Trend



School Name	15-16	16-17	17-18	18-19	19-20
SLWCHS	242	492	583	810	696
TCHS	201	420	442	573	413
FPC	213	335	438	490	483
PSL	164	453	425	504	369
FPWWA	85	165	393	533	366
LPA	84	161	109	70	41
District Total	989	2026	2390	2980	2,368



Skills Gap Study 2017, 2019



- ✓ Quantifies the region's workforce requirements.
- ✓ Develops a new set of strategies to expand the talent pipeline in the targeted industries.
- ✓ Reviews the progress made by the community on the implementation of recommendations from the Treasure Coast Skills Gap Report in 2017.
- ✓ Skills Gap 2.1 is in effect. There is a stronger focus on businesses . The goal is to increase local business awareness of what CTE programs are offering to increase the pipeline of workers.

SLPS Initiatives Resulting From Skills Gap Study Participation

School
Counselor Bus
Tour

State of Jobs
Fair

Healthcare
Roundtable

Ready to
Work Boot
Camp

Virtual Employment
Session for
Graduating Seniors

Marine
Roundtable

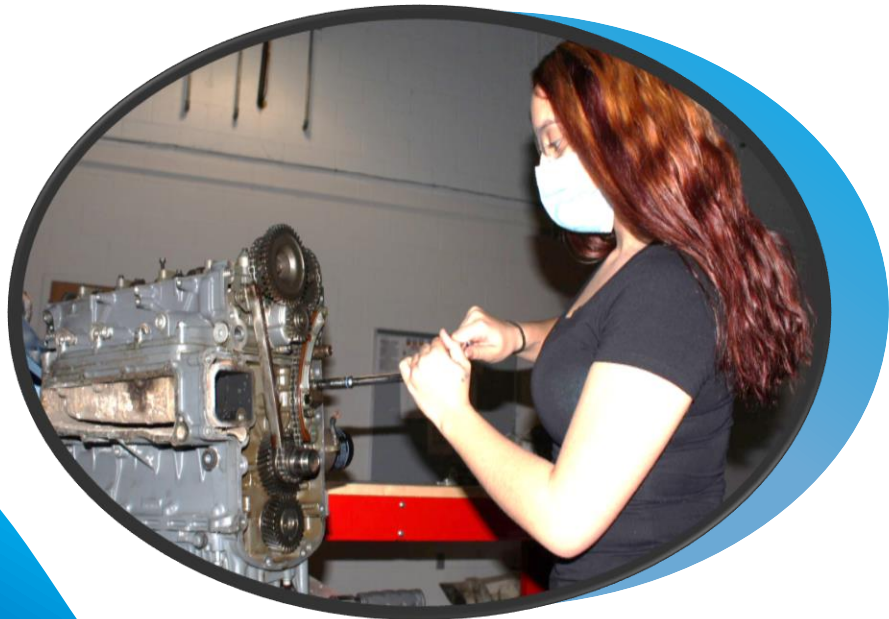
Program
Expansion

New
Programs

These New Strategies Added To Existing Activities:

- ✓ Advisory Boards For All Programs
- ✓ Virtual Field Trips
- ✓ Industry Partnerships
- ✓ Great Explorations For Middle and High (IRSC)
- ✓ Career Reality Fairs
- ✓ Culinary Kitchen Krawls
- ✓ Internships and Clinicals

New and Expanded CTE Programs Meeting Local Workforce Needs



- ✓ Outboard Marine
- ✓ Building Construction Technology
- ✓ Engineering/Manufacturing Technology
- ✓ Pharmacy Tech
- ✓ Allied Health/Medical

New Pre-Apprenticeships



- ✓ **Building Construction Technologies**
Port St Lucie High School
- ✓ **Outboard Marine Service Technology**
St Lucie West Centennial High
- ✓ **Advanced Manufacturing and Engineering**
Treasure Coast High School
- ✓ **Technical Design**
Port St Lucie High School
- ✓ **Pharmacy Technician**
Fort Pierce Westwood Academy

Building Construction Trades Technology (Port St. Lucie High)

- ✓ The content is aligned with challenging academic standards and relevant technical knowledge and skills
- ✓ Students can earn the National Architecture & Construction fields Center for Construction Education Research (NCCER) Carpentry certification
- ✓ HBI Pre-Apprenticeship Cert Training (PACT)

Curriculum includes :

- Carpentry
- Masonry
- HVAC
- Plumbing
- Roofing,
- Electrical Wiring
- Installation Of Dry-wall And Flooring
- Virtual Welding



Outboard Marine Technology Program (Centennial High School)



- ✓ Prepares Students For Further Education And Careers In The **Marine, Transportation, Technology and Service fields.**
- ✓ Students learn many aspects of the engine repair industries including, but not limited to **overhaul of four-stroke and two-stroke cycle engines, outboard motors, servicing boat trailers, and boating accessories.**

Curriculum includes:

- Engine Performance Certification
- Safety
- Use of marine woods, metals and fiberglass
- Boat Rigging
- Electrical Systems
- HVAC
- Fuel Tank Installation
- Pumps and Head Units
- Trailer Repair

Advanced Manufacturing and Engineering (Treasure Coast High)

- ✓ Students learn many aspects of the manufacturing and engineering industries including, but not limited to **safety, maintenance, quality, production, technical design, mechanical, electrical, civil and environmental engineering.**
- ✓ Coursework emphasizes math and its connection to **technology, design, G-Code, measurement, and many other real-world, problem-solving applications.**

Curriculum includes :

- Problem solving
- Technical design
- Computer aided drafting
- Safety and use of industrial tools and equipment
- Programmable logic and controls including robotics
- Production processes
- Quality control
- Technical design processes.





Advanced Manufacturing and Engineering (Treasure Coast High)



Industry Certifications:

- ✓ Autodesk Inventor
- ✓ AutoCAD Certification
- ✓ Manufacturing Skill Standards Council Certified Production Technician (MSSC-CPT)

Partnerships:

- ✓ Treasure Coast Manufacturers Association (TCMA), Economic Development Council (EDC) of St Lucie, and CareerSource Research Coast provide monthly industry guest speakers.

Technical Design Program (Port St. Lucie High School)



- ✓ Prepares Students For Further Education and Careers In **Technical Design, Technology and Engineering** fields.
- ✓ Students learn many aspects of the technology and engineering industries including
- ✓ Students use 3D Printers, AutoCAD and Inventor

Curriculum includes:

- Design Creation and Deployment of Technical Design Renderings
- Computer Aided Drafting
- Safety
- Industry Tools and Equipment
- Production Processes
- Quality Control
- Robotics
- 2D modeling
- 3D modeling
- Design, 3D print and race car designs
- Design cabinets and kitchens in 3D with plan creation and materials list

Pharmacy Technology Program (Fort Pierce Westwood Academy)



- ✓ Registered with the **Florida Board of Pharmacy**
- ✓ Industry Certifications Offered through National Health Career Association:
 - Certified Medical Administrative Assistant
 - Certified Pharmacy Technician (CPhT)
- ✓ Pharmacy Technician Advisory Board Implemented 2018-2019 SY

Curriculum includes :

- Pharmacy Technician administrative procedures
- Quality control
- Proper handling and compounding techniques
- Patient safety
- Dispensing and drug distribution

Medical Programs



Biomedical Science

Biotechnician Assistant
Credentialing Exam,
Certified Electrocardiograph
Technician

PSL

Allied Health Assistant

Certified Medical Administrative
Assistant, Certified
Electrocardiograph Technician

FPC, FPWWA, PSL, SLWC, TCHS

Health Unit Coordinator

Electronic Health
Records Specialist

FPWWA

Exercise Science

Certified Personal
Trainer

FPW

Emergency Medical Responder

Certified Emergency
Medical Responder

TCHS

Nursing Assistant

Certified Nursing Assistant,
Certified Medical
Administrative Assistant

FPC, FPW, PSL, SLWC, TCHS



New Program For 21-22 School Year



Global Logistics Treasure Coast High School



How Can you Support Us?

Supporting Civic Literacy

Support a Civic Literacy Practicum in 12th grade

Purpose:

- ✓ To help students evaluate roles, rights and responsibilities of United States citizens and identify methods of active participation in society, government and, the political system.
- ✓ To inspire meaningful engagement and help students learn how government entities at the local, state or federal level interact with the public which they represent and serve.

How the PSL City Government Can Help

Supporting Civic Literacy

- ✓ Offer unpaid internships for seniors
- ✓ Provide simulations for how local government works in their various functions
- ✓ Create opportunities for students in civic engagement activities
- ✓ Provide mentorships or interviews to support students working on related research papers
- ✓ Formally recognize students attending public city government meetings
- ✓ Create a process for signature verification for students attending public meetings for Bright Futures documentation

How Can You Support Us?

Supporting Career and Technical Education

City government operations require skill sets within a wide-range of departments.

Our students can benefit from:

- ✓ Unpaid/Paid internships in various departments: Buildings, Parks and Recreation, Offices, Communication, etc.
- ✓ Student volunteer campaign within city departments
- ✓ Increase speaking engagements to middle and high school students regarding careers in government and city management

How Can You Support Us?

Additional Ideas for Support

- ✓ Expand Wi-Fi across the city
- ✓ Use city marquees, signs and social media outlets to communicate partnerships with the School District

Meeting the Mental Health and Social Emotional Needs of Children

St. Lucie

PUBLIC SCHOOLS



Guiding Principals for a Comprehensive System of Mental Health Supports

- Early identification and intervention.

- Strengthen the delivery of services to address the social and emotional well-being and mental health needs of all children.

- Provide intentional and deliberate instruction in social and emotional learning for all children through established classroom practices.

- Educate staff and families on the supports in place to address the social, emotional, mental and behavioral health needs of children.

- Provide services and supports to address the social, emotional, behavioral and mental health needs of students through a multi-tiered system of supports.

How Are We Accomplishing This Task?



- ✓ Expansion of staff—We have added more school social workers, mental health counselors, behavioral intervention staff, and Certified School Guidance Counselors
- ✓ Improved our partnerships with outside agencies by expanding our Mental Health Collaborative
- ✓ Created a department of Social and Emotional Learning
- ✓ Focus on intentional and deliberate instruction in schools on the five competencies of social and emotional learning
- ✓ Incorporated evidence-based curriculum in daily instruction for all students at all grade levels

Major Initiatives



- ✓ Signs of Suicide Instruction
- ✓ Crisis Prevention and Grief Support
- ✓ Mental Health Awareness
- ✓ Attendance
- ✓ Reduce Truancy and Chronic Absenteeism
- ✓ Youth Mental Health First Aid
- ✓ Positive Behavioral Interventions and Supports
- ✓ Equitable Discipline Practices
- ✓ Expanding Health Care Services for the District

How Can You Support Us?



- ✓ Support our initiatives
- ✓ Share the message
- ✓ Learn about our programs and how they target the development of the whole child
- ✓ Support our agency partners
- ✓ Financial incentives or grants to support our work

Attendance



- ✓ 2017-2018 school year began partnership with PSLPD
- ✓ 2 officers to assist with truancy interventions (limited to PSLPD jurisdiction)
- ✓ Officers assist with more difficult cases for chronic absenteeism or truancy and hard to locate families
- ✓ Officers work in partnership with school social workers and school staff to determine appropriate interventions
- ✓ Officers assist by:
 - participating in school based attendance team meetings
 - providing referrals to community resources
 - directing support to parents and students including mentoring
 - participating in truancy court
- ✓ Additionally, PSLPD road patrol and parks officers actively monitor parks and other areas of the city for school age children out during the daytime. They interview students and determine if they should return the student to school or to the home.



How Can You Support Us?



- ✓ Continue to fund the Truancy Officers through PSLPD
- ✓ Support our attendance initiatives
- ✓ Share the message
- ✓ Fund incentives or grants for schools focusing on improving attendance and reducing chronic absenteeism or truancy



- ✓ We currently work with the Florida Department of Health in St. Lucie to provide nursing services for our traditional public schools.
- ✓ The RNs from the DOH provide support to our school based clinics weekly. Currently they only employ 12 nurses to provide support to our traditional schools.

How can you support us?

- ✓ Work collaboratively with the Florida Department of Health in St. Lucie to fund and expand the School Health and Nursing Program to all traditional and charter schools in the district.

Growth and Intergovernmental Initiatives

St. Lucie

PUBLIC SCHOOLS



Mutual Use Success

- ✓ Long Term
 - Whispering Pines Park
 - WMPE Football fields
 - PSL Basketball program use of School Gyms
- ✓ Recent Actions
 - Bayshore (2017)
 - Southern Oaks (2018)
 - Manatee (2019)
 - Westgate (2019)
 - Planned (Oak Hammock, Floresta)

School Planning, Developer Coordination and Real Estate Needs

- ✓ High level of activity in southwest Port St. Lucie with additional large development moving forward at a fast pace
- ✓ Tradition Western Grove Parcel
- ✓ Southern Grove
 - Del Webb
 - Pulte
 - Mattamy
- ✓ Riverland Grove
 - Age Restricted
 - Family Market anticipate soon
- ✓ LTC Ranch-First Phase in permitting
- ✓ Wilson Grove Anticipated
- ✓ Verano- Moving from retirement market to families
- ✓ Continued Development of Platted Lots in PSL planning area 4 N and 4 S.

How Can You Support Us?

Community Planning

- ✓ Making sidewalks and safe passage for residents a priority and updating code to require them to be addressed
- ✓ Providing a long term sidewalk plan then continuously providing annual funding and working with TPO to funds them
- ✓ Providing joint community and school planning to assure school sites in new communities

ST. LUCIE PUBLIC SCHOOLS TAKE A CLOSER LOOK

