

# Landscape Data

## Perimeter Landscaping Adjacent to Road Right-of-way

**Trees**  
 Required - (1 Tree/30 L.F.) - 5,463.85 L.F./30 = 182 Trees  
 Provided - 182 Trees

**Shrubs**  
 Required - Continuous Hedge 2' O.C. = 2,732 Shrubs  
 Provided - 2,732 Shrubs

## Parking Area Interior Landscaping

Required Terminal/Interior Island Trees - 1 Tree per Terminal/Interior Island = 60 Trees  
 Total Terminal/Interior Island Trees Provided = 60 Trees

**Palm Requirements**  
 Required - No more than 25% of required trees may be palms  
 Total Trees & Palms = 434  
 Total Palms = 0 x 2 @ 2:1 = 0  
 Provided: Palms = 0 / 2 = 0 / 434 = 0%

## Building Facades

**Trees**  
 Required - 1 Tree / 30 L.F. of Building Perimeter  
 5,472 L.F. of Building Perimeter / 30 L.F. = 182 Trees  
 Provided - 192 (Some relocated to dry retention & Lake for additional water cleansing)

**Shrubs**  
 Required - 1 Shrub / 1.5 L.F. of Building Perimeter  
 Excluding Paved Access Areas = 2,276 L.F. X 1.5 = 1,934 Shrubs  
 Provided - 1,934 Shrubs

Building #	Total L.F. / Trees	Total L.F. Less Paved Access / Shrubs
1	582' / 30 = 20	328' / 1.5 = 219
2	546' / 30 = 18	293' / 1.5 = 195
3	1,068' / 30 = 36	569' / 1.5 = 380
4	1,068' / 30 = 36	569' / 1.5 = 380
5	1,068' / 30 = 36	569' / 1.5 = 380
6	1,068' / 30 = 36	569' / 1.5 = 380

## Native Plants

**Trees:**  
 Required: 50% of all required trees shall be native  
 Total Trees = 434  
 Provided: Native Trees = 217 / 434 = 50%

**Shrubs:**  
 Required: 25% of all required shrubs shall be native  
 Total Shrubs = 4,666  
 Provided: Native Shrubs = 1,167 / 4,666 = 25%

**Flowering Trees**  
 Required: 20% of all required trees shall be flowering  
 Total Trees = 434 (Not Including Palms) x 20% = 87  
 Provided: Flowering Trees = 87 = 20%

**Landscape Island Evergreen Shade Trees**  
 Required: 75% of all required trees located within landscape islands shall be evergreen shade trees  
 Total Landscape Islands = 60 x 75% = 45 Trees  
 Provided: Landscape Islands with Evergreen Shade Trees = 45 = 75%

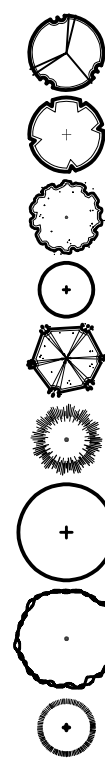
**Tree Species Mix**  
 Required: When 41+ trees are required the minimum species mix = 5  
 Provided: 7

**Dumpster**  
 Required - Hedge / Vine 2' O.C. 40 L.F. / 2 = 20 Shrubs  
 Provided - 20 Shrubs / Dumpster (10) = 200

**Total Trees:**  
 Total Trees Required: 434  
 Total Trees Provided: 434

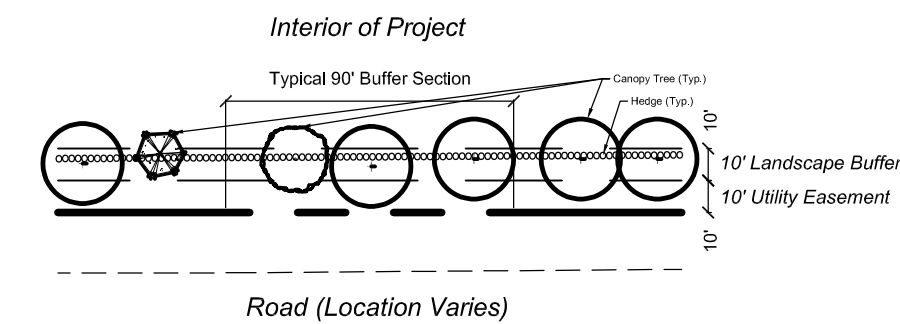
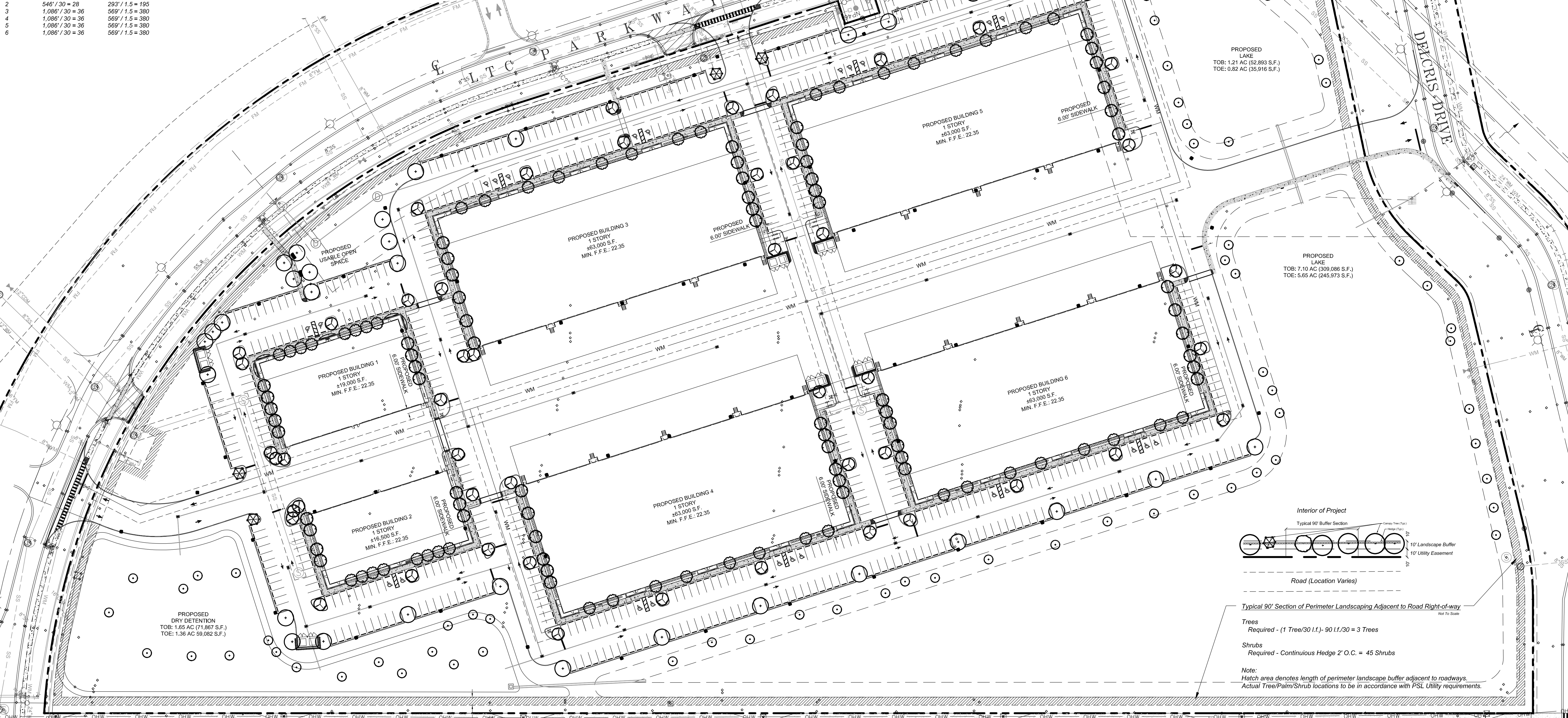
# Plant List

SYM	SPECIES	COMMON NAME/DESCRIPTION	SIZE	SPACING	REMARKS	DROUGHT TOLERANCE
CANOPY	ORNAMENTAL TREES					
IE*	ILEX X ATTENUATA 'EAGLESTON'	EAGLESTON HOLLY	12 x 5, 2.5' CAL.	A.S.	FULL CANOPY, 4' C.T. MIN.	HIGH
LI	LAGERSTROEMIA INDICA 'TUSKEGEE'	CREPE MYRTLE 'RED'	12 x 8, 2.5' CAL.	A.S.	FULL CANOPY, 4' C.T. MIN.	HIGH
LJ	LIGUSTRUM JAPONICUM	LIGUSTRUM TREE FORM	12 x 5, 2.5' CAL.	A.S.	FULL CANOPY, 4' C.T. MIN.	HIGH
MG*	MAGNOLIA GRANDIFLORA	LITTLE GEM MAGNOLIA	12 x 5, 2.5' CAL.	A.S.	FULL CANOPY, 4' C.T. MIN.	HIGH
MG-1*	MAGNOLIA GRANDIFLORA	SOUTHERN MAGNOLIA D.D. BLANCHARD	12 x 5, 2.5' CAL.	A.S.	FULL CANOPY, 4' C.T. MIN.	HIGH
PE*	PINUS ELLIOTTI Densa	SOUTH FLORIDA SLASH PINE	12 x 5, 2.5' CAL.	A.S.	FULL CANOPY, 4' C.T. MIN.	HIGH
OL*	QUERCUS LAURIFOLIA	LAUREL OAK	12 x 5, 2.5' CAL.	A.S.	FULL CANOPY, 4' C.T. MIN.	HIGH
OLV*	QUERCUS VIRGINIANA	LIVE OAK	12 x 5, 2.5' CAL.	A.S.	FULL CANOPY, 4' C.T. MIN.	HIGH
TD*	TAXODIUM DISTICHUM	BALD CYPRESS	12 x 5, 2.5' CAL.	A.S.	FULL CANOPY, 4' C.T. MIN.	HIGH
<b>SHRUBS / GROUNDCOVERS / VINES</b>						
FOS*	FORESTIERA SELEGATA	FLORIDA PRIVET	#3, 2' x 2'	2' O.C.	FULL & THICK	HIGH
MYR*	MYRICANTHES FRAGRANS	SIMPSON STOPPER	#3, 2' x 2'	2' O.C.	FULL & THICK	HIGH
MYR-1*	MYRICANTHES FRAGRANS	SIMPSON STOPPER	#7, 4' x 2'	2' O.C.	FULL & THICK	HIGH
SOD-1	PASPALUM NOTATUM	BAHIA SOD	SEE SPECS			HIGH
SOD	STENOTAPHRUM SECUNDATUS	ST. AUGUSTINE SOD	SEE SPECS			LOW - MEDIUM
* = FLORIDA NATIVE						



**Conceptual Design Group, Inc.**  
 Landscape Architecture - Site Planning  
 900 East Ocean Boulevard, Suite 1300  
 Stuart, Florida 34994  
 (772) 344-2340  
 LC: 26000198

**Willard LTC Ranch**  
 Glades Cut Off Road (CR 709)  
 City of Port St. Lucie, Florida



**Typical 90' Section of Perimeter Landscaping Adjacent to Road Right-of-way**  
 Trees Required - (1 Tree/30 L.F.) - 90 L.F./30 = 3 Trees  
 Shrubs Required - Continuous Hedge 2' O.C. = 45 Shrubs  
 Note: Hatch area denotes length of perimeter landscape buffer adjacent to roadways. Actual Tree/Palm/Shrub locations to be in accordance with PSL Utility requirements.

## Port St. Lucie Utility Systems Department Notes

- No landscaping shall be planted in such a manner as to adversely affect drainage or utility easements.
- Trees with a maximum mature height greater than 10 feet shall not be planted over overhead power lines. Such trees with a maximum mature height less than the height of the overhead power line shall be selected from Appendix C, Table 1, Type B Trees. No trees shall be planted within 10 feet of any existing utility pole, guy wire, or pad mounted transformer (See FP&L's publication "Plant the Right Tree in the Right Place" for placement and maintenance requirements).
- All landscaping within Port St. Lucie Utility Systems Department (PSLUSD) utility easements shall comply with PSLUSD technical specifications, policies, and codes.
- Trees shall not be planted within ten (10) feet of any PSLUSD underground infrastructure.
- In locations where the perimeter landscape buffers must be designed to be located in utility easements due to site constraints, the trees, palm trees and shrubs shall be selected from the list in §153.04(9)(3)(i) and used in these areas to meet the landscape buffer requirements. Trees and palm trees may be planted not less than seven (7) feet from the underground PSLUSD infrastructure. The remainder of the landscape strip shall be planted with grass and ground cover.

## Port St. Lucie Engineering Department Notes

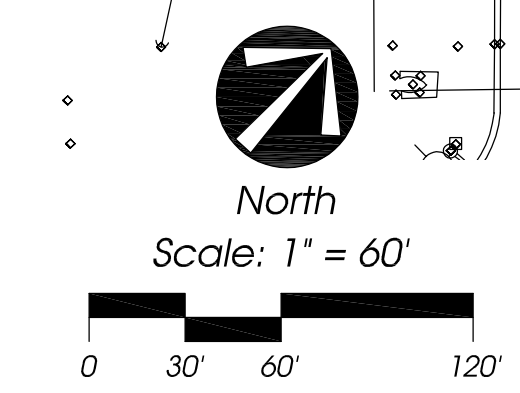
1. The landscape plans meet the City's sight distance and clear zone requirements from Section 156.204 of the Code for 10' requirements.

## GLADES CUT OFF ROAD

## General Notes

- No plant substitutions can be made without the City of Port St. Lucie's approval.
- All required landscape improvements must be inspected and approved by the City of Port St. Lucie prior to the issuance of a Certificate of Occupancy.
- Any existing landscaping, sod, or irrigation damaged or destroyed during the construction shall be replaced prior to the final inspection.
- All prohibited, exotic and invasive species shall be removed from the entire site prior to issuance of certificate of occupancy.
- Planting adjacent to the hydrants is to have a minimum clear radius of 7.5' as required by the NFPA Uniform Fire Code Florida Edition 18.3.4.1 Hydrants. All fire hydrants and fire check valves shall have a minimum of 7.5' from the front and sides with 4' from the rear to all landscape material per the Florida Fire Prevention Code.

# Conceptual Landscape Plan



Jeffrey W. Smith, RLA  
 Florida Registration Number: LA 0001635

Job No. 20-1002  
 Drawn By JWS  
 Submittal Dates 5-25-2021  
 8-31-2021

Revision Dates  
 7/21 City Comments 8-31-2021

These drawings are the property of the landscape architect and are not to be used for other projects except by written permission from the landscape architect. Report any discrepancies immediately to the landscape architect.

Sheet **CL-1** of 1  
 City Project Number: P21-069