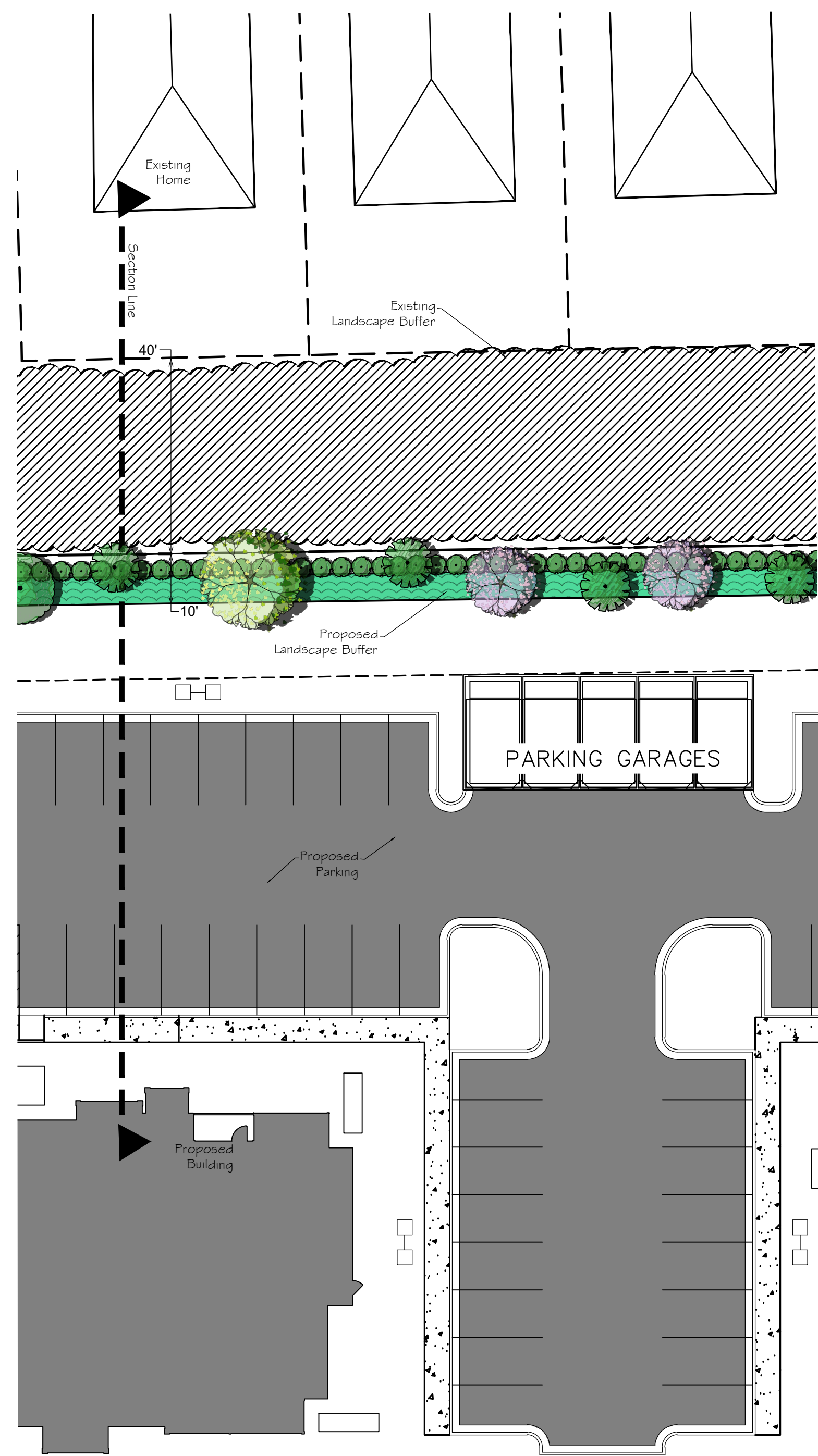


**Buffer Section**  
NTS

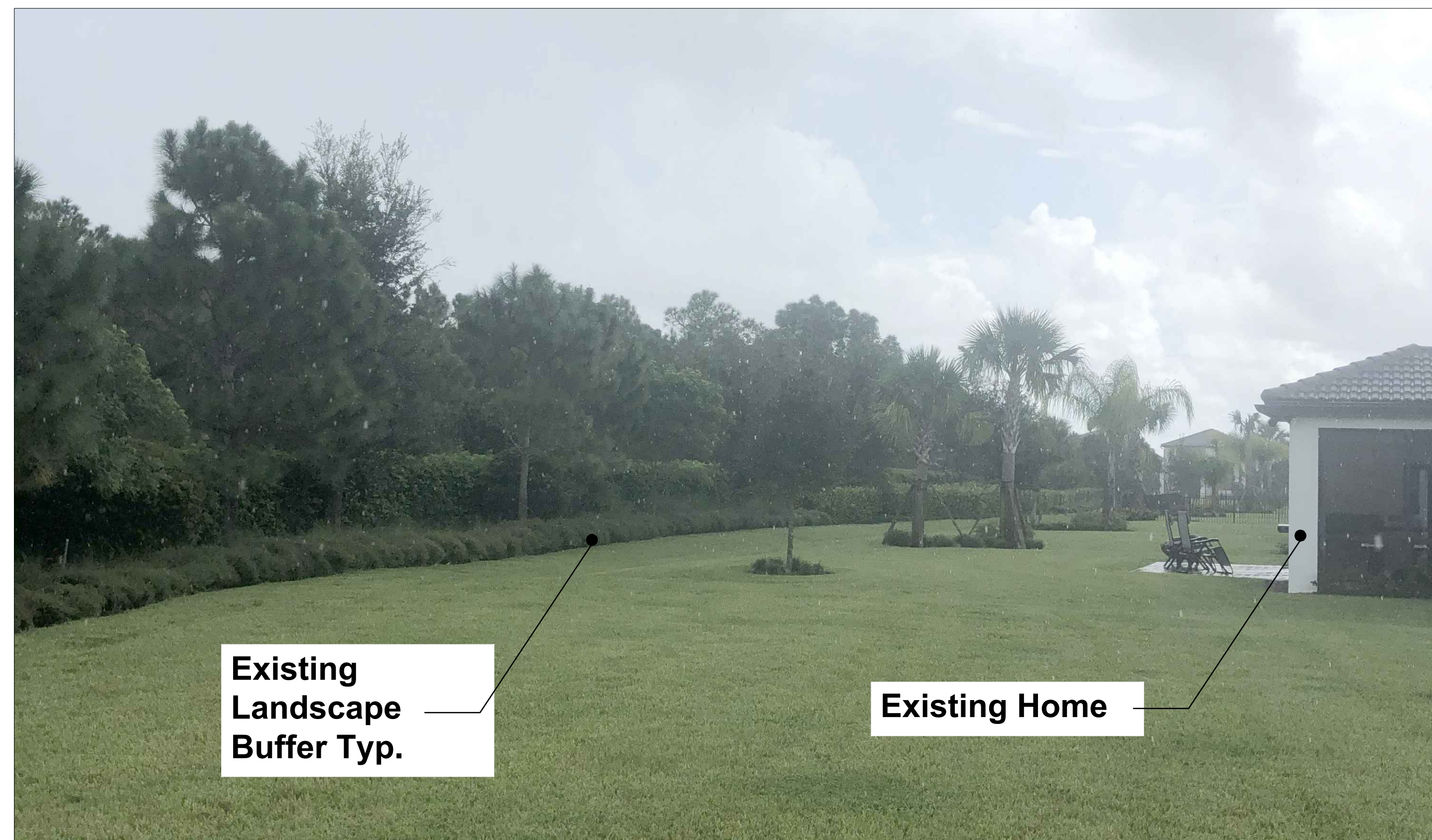
Key / Location:

Project Team: N.T.S.

Land Planner / Landscape Architect: Lucido & Associates  
 701 East Ocean Boulevard  
 Stuart, Florida 34994  
 772-220-2100



**Detail Buffer Plan**  
Scale = 1"=20'-0"



**Existing Buffer Image**

**Veranda Apartments**

Port St. Lucie, FL  
**Landscape Buffer Section**  
 City of Port St. Lucie P# PSLUSD No.

Date	By	Description
09.08.20	PG	Landscape Section

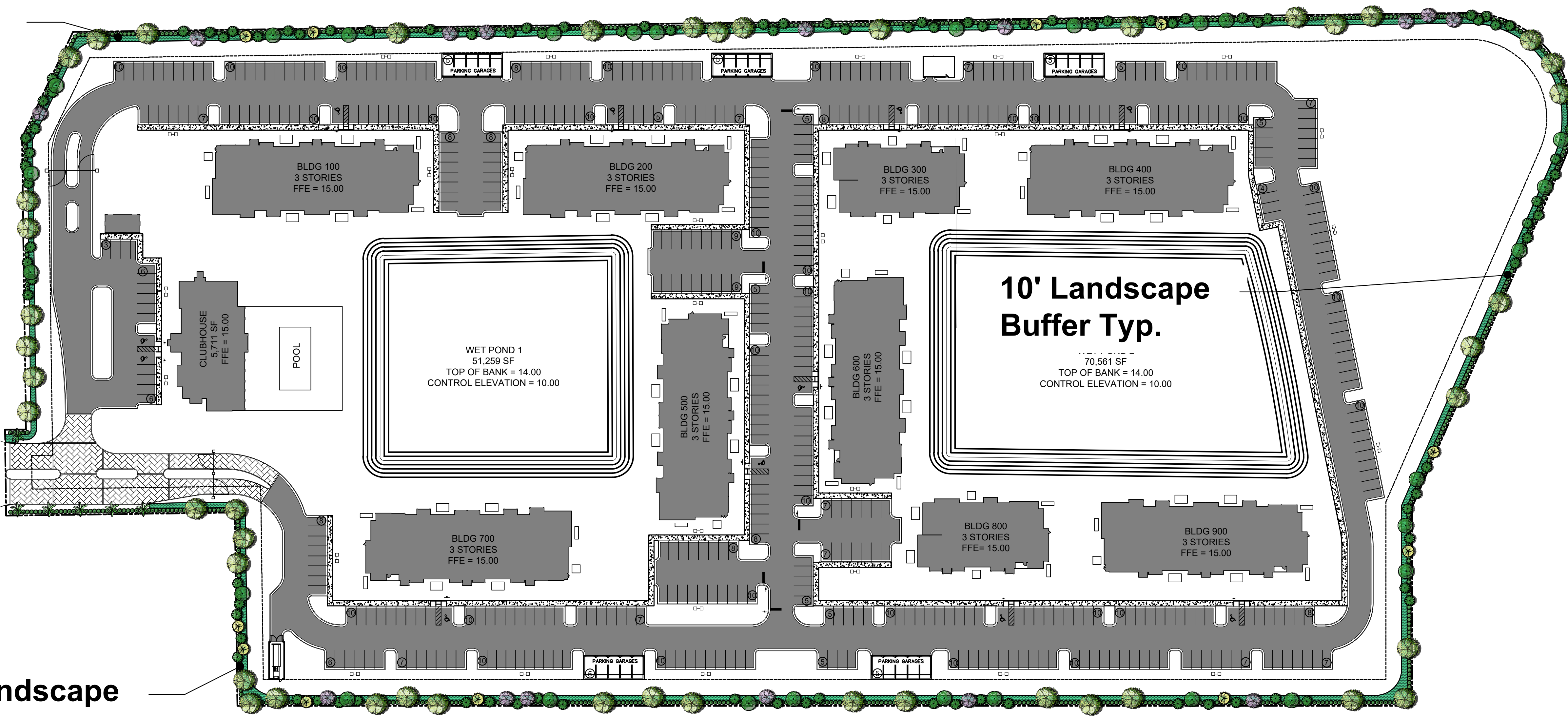
SCALE: 1" = AS

0 AS AS AS

REG. # 1018  
Thomas P. Lucido

Designer	PG	Sheet
Manager	PG	
Project Number	19-665	
Municipal Number	---	
Computer File		

# 10' Landscape Buffer Typ.



# 10' Landscape Buffer Typ.

Key / Location:

Project Team: N.T.S.

Land Planner / Landscape Architect: Lucido & Associates  
 701 East Ocean Boulevard  
 Stuart, Florida 34994  
 772-220-2100

## Veranda Apartments

Port St. Lucie, FL

### Landscape Plan

City of Port St. Lucie P# PSLUSD No.

Date	By	Description
09.08.20	PG	Landscape Buffer

#### PLANT SCHEDULE VERANDA APARTMENTS

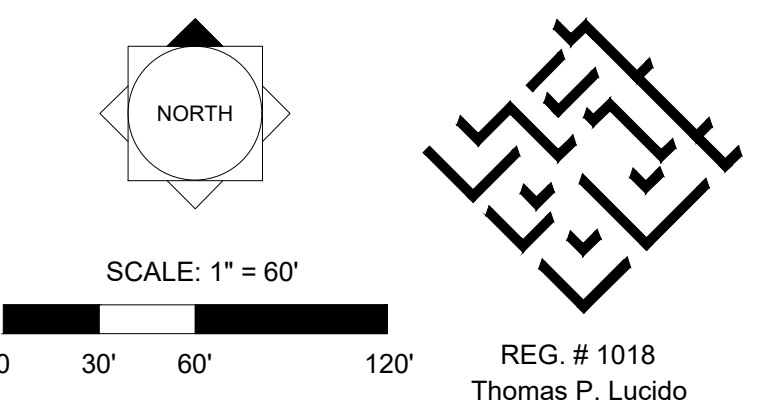
TREES	BOTANICAL NAME	COMMON NAME	CONTAINER	HEIGHT	WIDTH	NOTES	NATIVE	CALIPER	QTY	UNIT COST	TOTAL
	Bauhinia x blakeana	Hong Kong Orchid Tree	45G	12' HT	8' W	F, SP	Non-native	2.5" Caliper	15	\$500	\$7,500
	Conocarpus erectus	Green Buttonwood	45G	12' HT	6' W	STD, 3' CT, SP	Native	2.5" Caliper	27	\$500	\$13,500
	Quercus virginiana	Southern Live Oak	65G	12' HT	7' SPR	F, SP	Native	2.5" Caliper	46	\$600	\$27,600
	Roystonea elata	Florida Royal Palm	FG	10' GW		FF, HVY CAL, STR			6	\$2,000	\$12,000
	Sabal palmetto	Cabbage Palm	FG	14'-30' CT, MIX HTS		CV, SLK, SP	Native		96	\$200	\$19,200
	Tabebuia caraiba	Yellow Tabebuia	45G	14' HT	7' W	F, SP	Non-native	2.5" Caliper	11	\$500	\$5,500
SHRUBS	BOTANICAL NAME	COMMON NAME	CONTAINER	HEIGHT	WIDTH	NOTES	NATIVE	QTY	UNIT COST	TOTAL	
	Clusia guttifer	Small Leaf Clusia	3G	24" HT	18" W	F	Florida Friendly	953	\$10	\$9,530	
SHRUB AREAS	BOTANICAL NAME	COMMON NAME	CONTAINER	HEIGHT	WIDTH	NOTES	NATIVE	SPACING	QTY	UNIT COST	TOTAL
	Native & Florida Friendly Shrub & Groundcover Mix	Shrub Mix	3G			F		36" o.c.	2,372	\$10	\$23,720
										TOTAL:	\$118,550

Required Trees:	Native%	# of Species	Flowering%	Drought Tolerant%	Palm%	
Perimeter: (4,025'/30)	135	50%=68	5	20%=27	50%=68	25%=34 (Max)

Provided Trees:	Native	# of Species	Flowering	Drought Tolerant	Palm	
Total:	135	108	5	27	108	34

Required Shrubs:	Native%	Drought Tolerant%	
Perimeter: (4,025'/2)	2,013	25%=504	50%=1,008

Provided Shrubs:	Native	Drought Tolerant	
Total:	2,013	600	2,013



REG. # 1018  
 Thomas P. Lucido

Designer PG Sheet  
 Manager PG  
 Project Number 19-665  
 Municipal Number ---  
 Computer File