

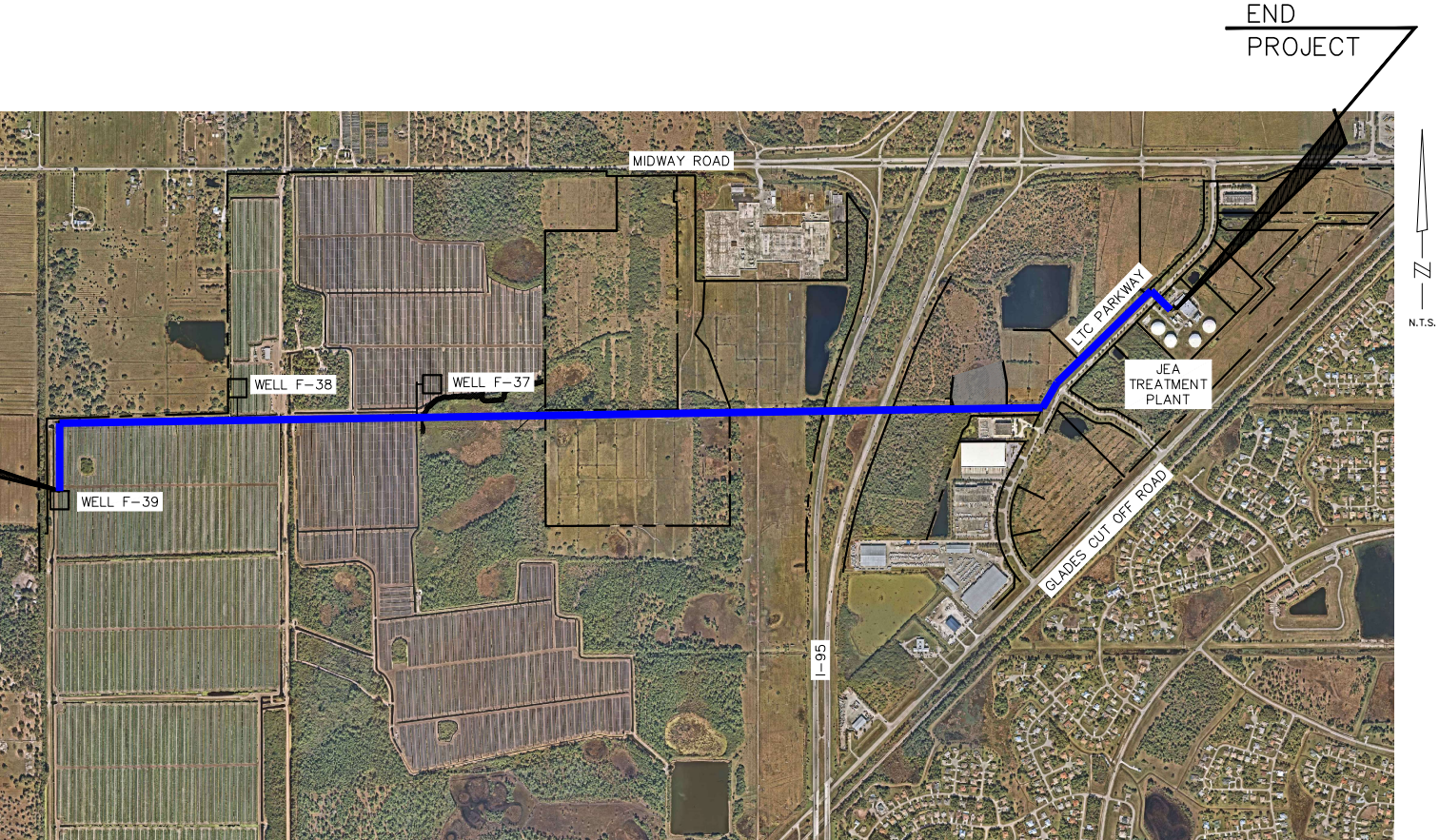
CONSTRUCTION PLANS
FOR
WESTERN RAW WATER MAIN
PREPARED FOR THE
PORT ST. LUCIE UTILITY SYSTEMS, FLORIDA



CITY OFFICIALS

MAYOR
VICE MAYOR, COUNCIL MEMBER
COUNCIL MEMBER
COUNCIL MEMBER
UTILITY SYSTEMS DIRECTOR

SHANNON M. MARTIN
JOLIEN CARABALLO
STEPHANIE MORGAN
DAVID PICKETT
ANTHONY BONNA
KEVIN R. MATYJASEK



LOCATION MAP
N.T.S.

CALL 2 WORKING DAYS
BEFORE YOU DIG

811

IT'S THE LAW!
DIAL 811

Know what's below.
Call before you dig.

SUNSHINE STATE ONE CALL OF FLORIDA, INC.

Thomas C
Jensen, P.E.

Digitally signed by
Thomas C Jensen, P.E.
Date: 2022.06.08
15:55:13 -04'00'

100% SUBMITTAL

				<div><div>Kimley»Horn</div><div>© 2021 KIMLEY-HORN AND ASSOCIATES, INC. 1920 WEKIVA WAY SUITE 200, WEST PALM BEACH, FL 33411 PHONE: 561-845-0665 FAX: 561-863-8175 WWW.KIMLEY-HORN.COM REGISTRY NO. 696</div></div>	<div>KHA PROJECT</div>	<div>WESTERN RAW WATER MAIN</div> <div>PREPARED FOR</div> <div>PORT ST. LUCIE UTILITY SYSTEM</div> <div>PORT ST. LUCIE, FLORIDA</div>	<div>LICENSED PROFESSIONAL</div> <div>THOMAS C. JENSEN</div> <div>FLORIDA LICENSE NUMBER 37290</div> <div>DATE: _____</div>	<div>COVER SHEET</div>	<div>SHEET NUMBER</div> <div>C-1</div>
					<div>DATE</div>				
					<div>SCALE AS SHOWN</div>				
					<div>DESIGNED BY SS</div>				
					<div>DRAWN BY SS</div>				
					<div>CHECKED BY TCJ</div>				
No.	REVISIONS	DATE	BY						