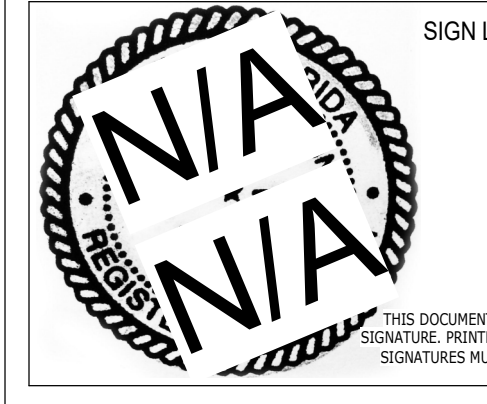


SHEET NOTES



THIS DOCUMENT HAS BEEN SIGNED AND SEALED BY JOHN DAVID CARLSON USING A DIGITAL SIGNATURE. PRINTED COPIES OF THIS DOCUMENT ARE NOT CONSIDERED SIGNED AND SEALED AND SIGNATURES MUST BE VERIFIED ON ANY ELECTRONIC COPIES USING: SIGNALIGN.COM

ALL IDEAS, DESIGN, ARRANGEMENTS AND PLANS INDICATED OR REPRESENTED BY THIS DRAWING ARE OWNED BY AND THE PROPERTY OF CABLEBA ARCHITECTURE, AN INDEPENDENT LLC, AND HERE GRANTED, EXCLUDED AND RESERVED FOR USE OR AND IN CONNECTION WITH THE SPECIFIC PROJECT. NONE OF THE IDEAS, DESIGN, ARRANGEMENTS OR PLANS SHALL BE USED BY OR DISCLOSED TO ANY PERSON, FIRM, OR CORPORATION FOR ANY PURPOSE WHATSOEVER WITHOUT THE EXPRESS PERMISSION OF CABLEBA ARCHITECTURE, AN INDEPENDENT LLC. WRITING, REPRODUCTION HEREOF IS A CRIMINAL OFFENSE UNDER U.S.C. SEC. 506 UNAUTHORIZED DISCLOSURE OF CONFIDENTIAL TRADE SECRET INFORMATION IN VIOLATION OF U.S.C. 512 AND OTHER LAWS. THE IDEAS, ARRANGEMENTS AND DESIGN DISCLOSED HEREIN MAY BE PATENTED OR BE THE SUBJECT OF PENDING PATENT APPLICATION.

#	DESCRIPTION	DATE

HEART SCULPTURE

MATTAMY HOMES

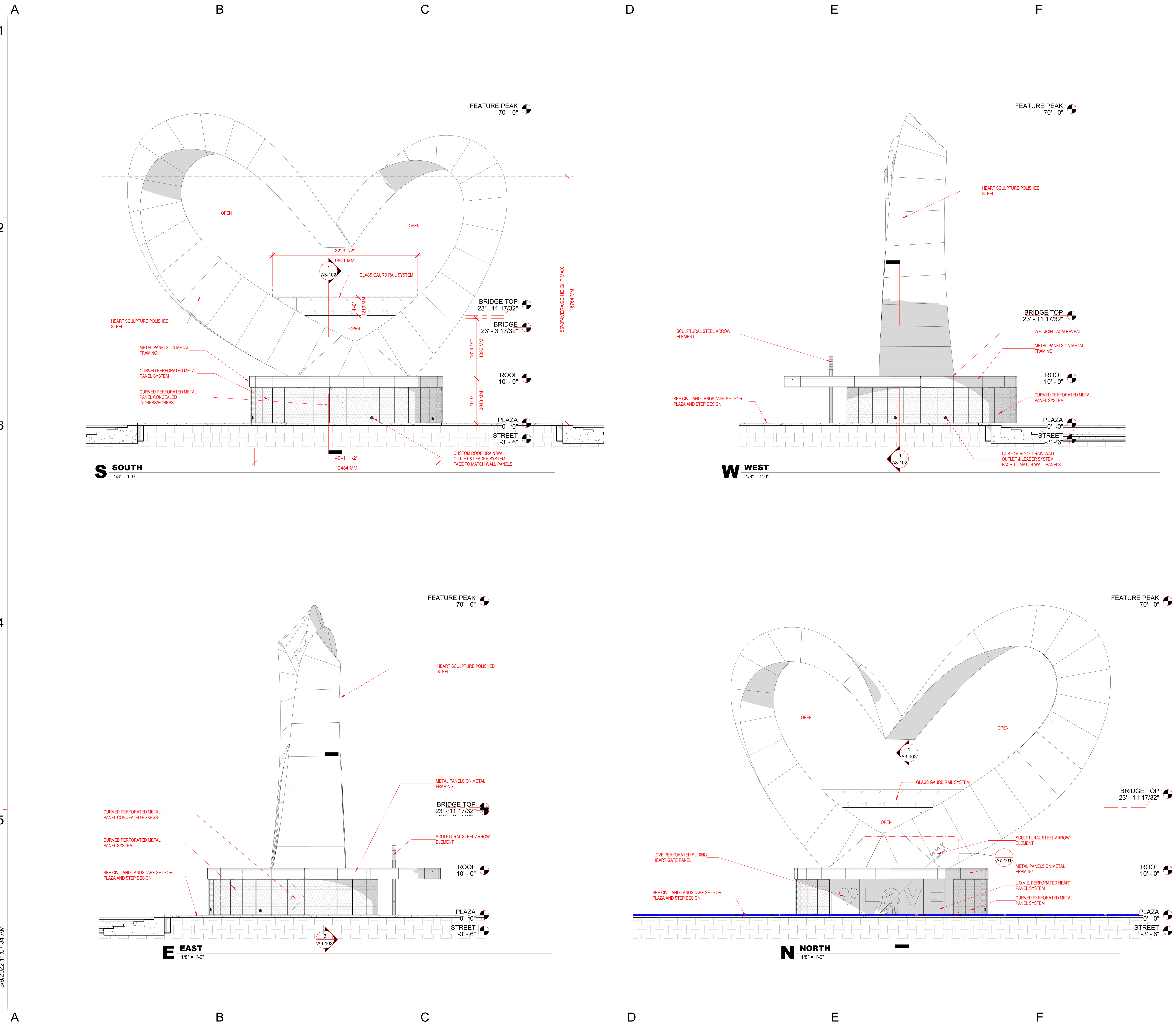
SW Village Parkway & SW Discovery Way
(Bvld.)
Port St Lucie, Florida 34987

EXTERIOR ELEVATIONS

CHECKED BY: JDC DRAWN BY: JDC

A2-101

SCALE: 1/8" = 1'-0" PROJECT #: 2021015



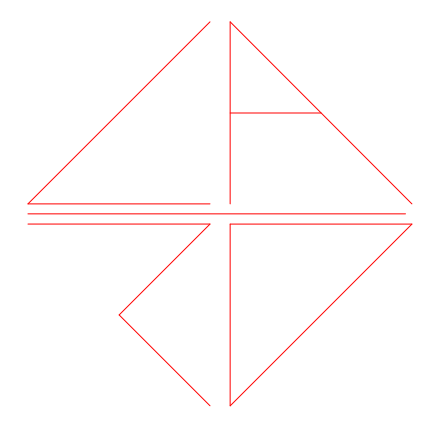
S SOUTH
1/8" = 1'-0"

W WEST
1/8" = 1'-0"

E EAST
1/8" = 1'-0"

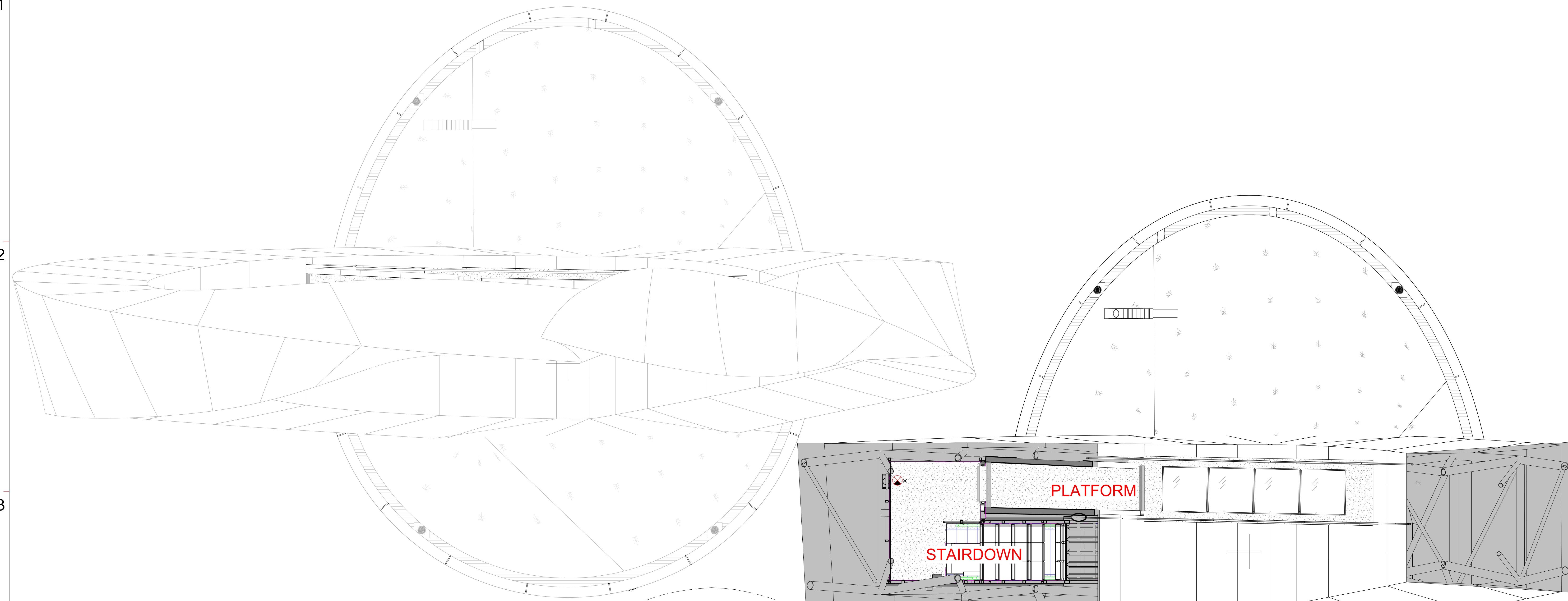
N NORTH
1/8" = 1'-0"

A
1
2
3
4
5
A
B
C
D
E
F

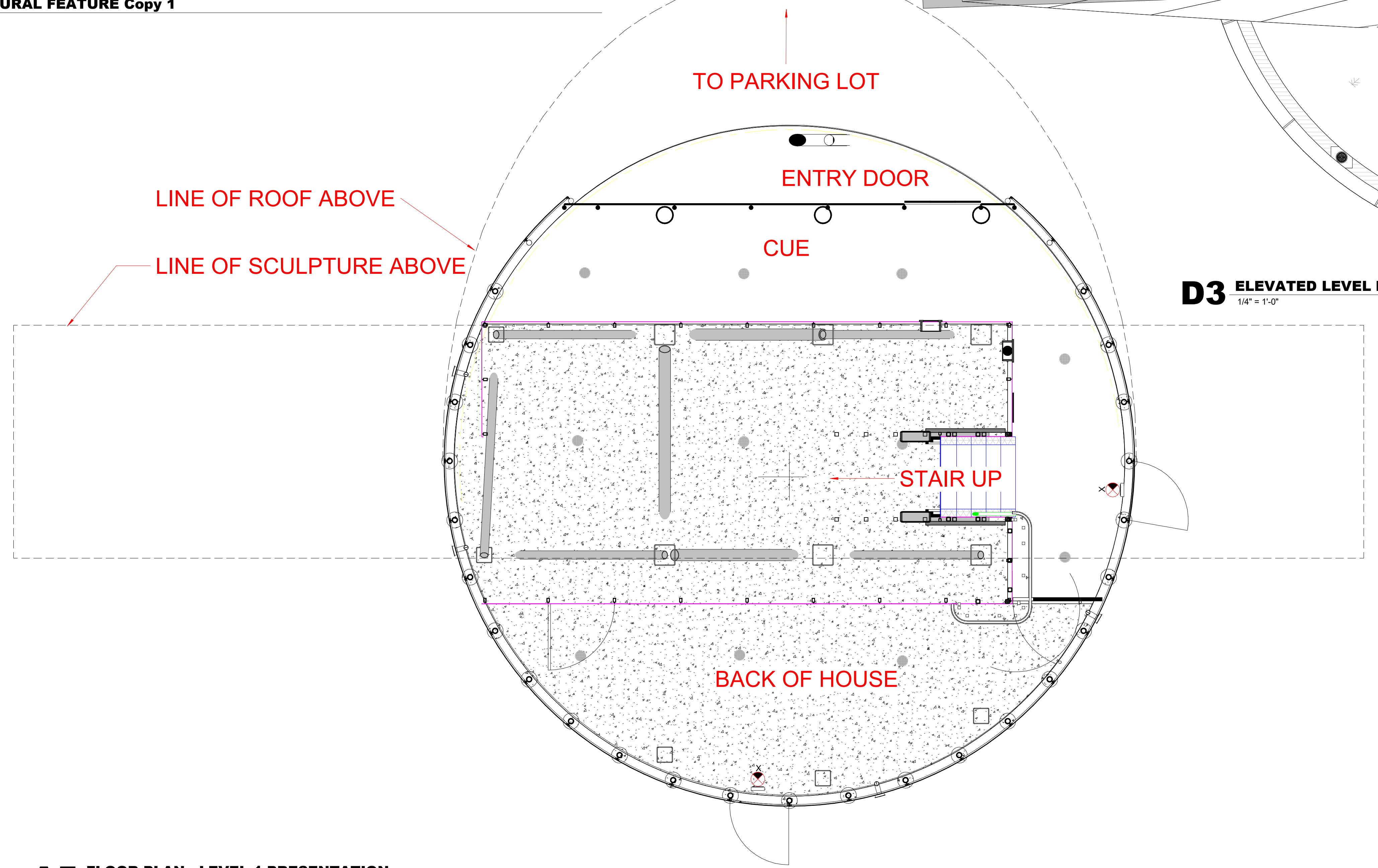
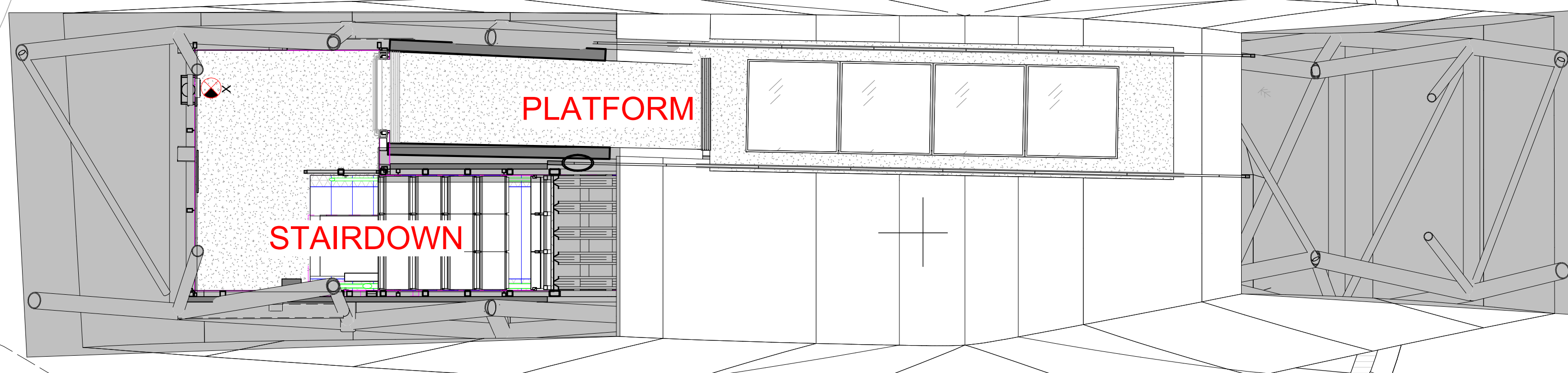


CA-RD
AA2003193

SHEET NOTES



A3 TOP OF SCULPTURAL FEATURE Copy 1
1/4" = 1'-0"



D3 ELEVATED LEVEL PLAN
1/4" = 1'-0"



SIGN LOCATION

#	DESCRIPTION	DATE

HEART SCULPTURE

MATTAMY HOMES

SW Village Parkway & SW Discovery Way
(Bvd.)
Port St Lucie, Florida 34987

PLANS

CHECKED BY JDC DRAWN BY JDC

SK-P

SCALE 1/4" = 1'-0" PROJECT # 2021015

A5 FLOOR PLAN - LEVEL 1 PRESENTATION
1/4" = 1'-0"

3/15/2022 3:24:39 PM