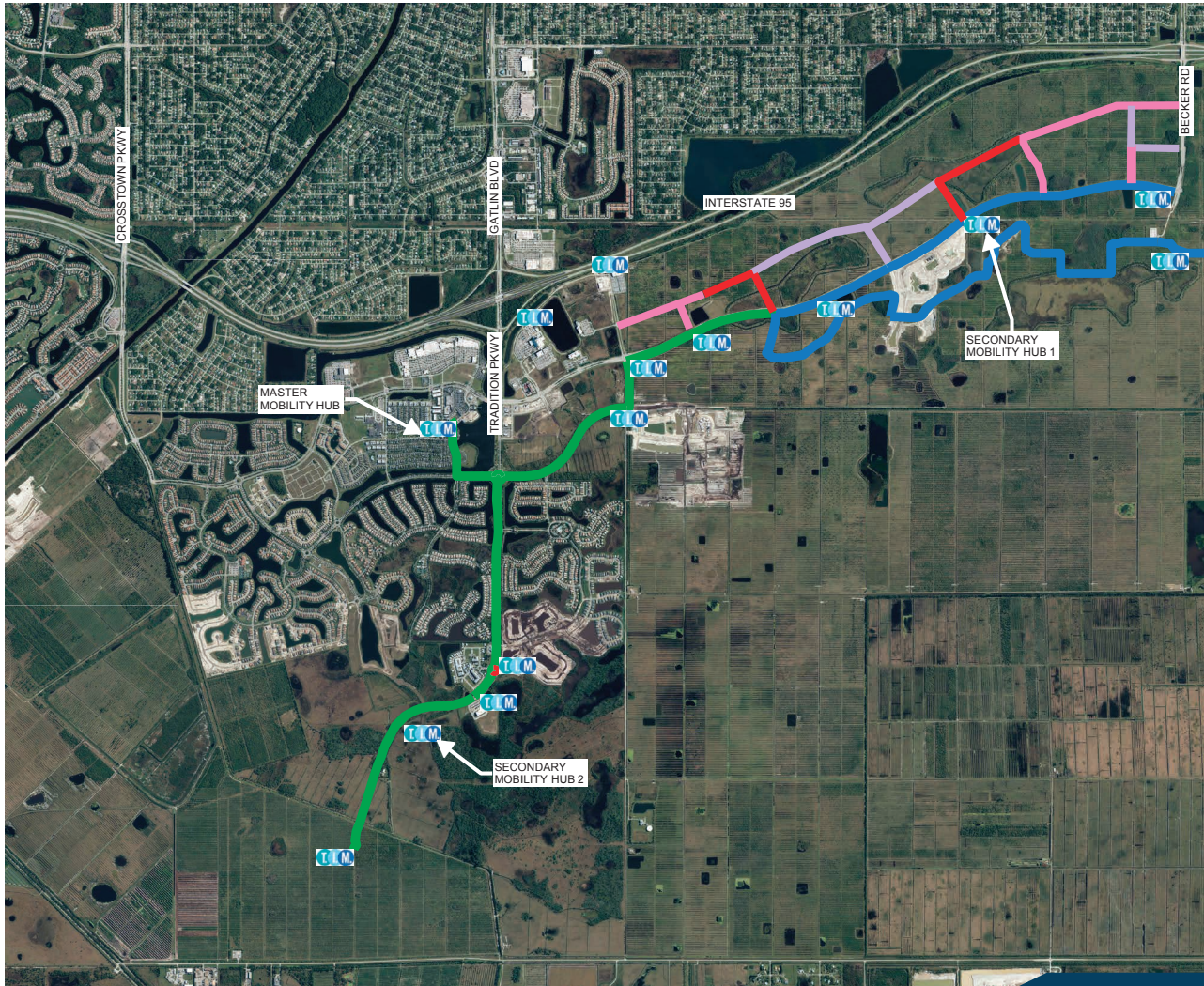




# MOBILITY & OPPORTUNITY FOR ALL

The City of Port St. Lucie is submitting a Rebuilding American Infrastructure with Sustainability and Equity (RAISE) grant application to the U.S. Department of Transportation (DOT). Port St. Lucie is focused on cutting-edge transportation infrastructure improvements that will spur economic development and regional job opportunities on Florida's Treasure Coast, provide connectivity, create innovative mobility options, promote environmental sustainability, and advance equity. The proposed project will: (1) extend a separated 13-mile trail for autonomous vehicles in the Tradition community; (2) build critical road infrastructure in the adjacent Southern Grove Jobs Corridor to create new, local employment opportunities; (3) optimize transit routes to ensure that low-income and minority populations have equitable access to work in Port St. Lucie and build new mobility hubs that integrate current and emergent transit options; and (4) Integrate live traffic and autonomous data with the University of Central Florida's Smart & Safe Transportation Lab Visualization platform. Port St. Lucie is one of the fastest growing cities in Florida. Much of Port St. Lucie's population and economic growth is taking place in the Tradition community and Southern Grove Jobs Corridor. Tradition is a mixed-use development that includes 6,000 homes, parks, shopping, dining, a town square, and other neighborhood amenities. The City's Southern Grove jobs corridor, fronting over four miles of Interstate 95 with two accessible interchanges, is a business district with one of the most regionally competitive and visible development-ready vacant land planned for large-scale office, medical, research & development, industrial, warehouse, and retail development.

Port St Lucie is partnering with autonomous vehicle leader BEEP. Inc. and nationally known developer Mattamy Homes to create a signature mixed-use, jobs-centric "well-being community" in the Tradition community and adjacent Southern Grove Jobs Corridor. The project will provide residents with new transportation choices on a separated 13-mile multimodal Tradition Trail, including walking, biking, and driverless passenger shuttle opportunities. The project will expand the transportation network in the Southern Grove Jobs Corridor to unlock up to 3 million square feet of industrial space with the potential to create 2,500 jobs. Finally, RAISE dollars will support the optimization of Treasure Coast Connector bus routes to ensure that minority and economically distressed neighborhoods in eastern Port St. Lucie enjoy equitable access to new job opportunities in the western Southern Grove Jobs Corridor. In addition, RAISE funding will support Smart City infrastructure that will deploy artificial intelligence, machine-to-machine learning, and sophisticated data management tools that will help establish a new transportation technology base for the region.



**Legend**

- Proposed RAISE Funderd Trail Head / Mobility Hub
- Existing Trail / Construction Started
- Proposed RAISE Funderd Trail Expansion
- Existing or Funderd Road
- Proposed RAISE Funderd Road
- Future Road



# WHAT IS A RAISE GRANT?

The RAISE Discretionary Grant program provides a unique opportunity for the DOT to invest in road, rail, transit and port projects that promise to achieve national objectives. The eligibility requirements of RAISE allow project sponsors at State and local levels to obtain funding for multi-modal projects that are more difficult to support through traditional DOT programs. Projects for RAISE funding will be evaluated based on the following merit criteria, addressed by the project as follows:

## SAFETY



- New advances in Smart City infrastructure will increase safety across all modes of mobility. The primary benefit of the project will be the availability of an autonomous vehicle network operating over a 13-mile mixed use trail.
- Separated from vehicle traffic, the Tradition Trail will reduce the incidence of vehicle crashes and improve safety while reducing dependency on personal automobiles and parking requirements.
- In addition, the creation of new local job opportunities within Port St. Lucie (traditionally a bedroom community) will reduce vehicle miles traveled and accidents for the 39,970 residents who live in, but work outside of, the City, a number that has increased 41% since 2007 and has outpaced population growth.
- Finally, improved bus service from the eastern portion of the community to new employment opportunities in the western Southern Grove jobs corridor will encourage transit use and reduce crashes with fewer vehicle miles traveled.

## ENVIRONMENTAL SUSTAINABILITY



- The project emphasis on electric and sustainable mobility choices (autonomous vehicles (AVs), electric carts, bicycles/e-bikes, and pedestrians access) and expanding transportation choices through the increased availability of local employment options and optimized transit system reduces energy consumption, road congestion and harmful fuel emissions.

## QUALITY OF LIFE



- A new multimodal network and mixed-use trail will connect first class residential neighborhoods, a regional employment center, a retail Town Center and a nationally recognized healthcare complex in a "Complete Streets" approach accommodating pedestrians, cyclists and transit.
- The project will increase transportation choices for people, reduce burdens of commuting and expand access to essential services including health care and job opportunities. The AV shuttle network will connect important areas in the community such as the Cleveland Clinic, the Adie R. Copas State Veterans' Nursing Home, a new 120-bed state veterans' home and the City's jobs Corridor and will include e-bike charging stations and multimodal connectivity of public spaces and the park system.

## ECONOMIC COMPETITIVENESS AND THE CREATION OF GOOD-PAYING JOBS



- The addition of 7,620 linear feet to Port St. Lucie's "jobs corridor" is expected to bring approximately 3 million square feet and 2,500 additional jobs; and this new economic growth along the Interstate 95 corridor is critical to provide employment options in the region.
- High-wage jobs will enable Port St. Lucie to compete globally for skilled workers and help America re-emerge as a manufacturing leader.
- By increasing the efficient flow of people and product, the project reduces the cost of doing business and improves efficiency which makes the local business more competitive and attracts economic development.

## INNOVATION



- The proposed RAISE components will introduce autonomous vehicles and launch innovative traffic monitoring and management technologies that will enable the City to dynamically adjust speed limits, flows of traffic, and operation of traffic-calming features.

## IMPROVE RACIAL EQUITY



- As the City's Jobs Corridor grows the City will work with St. Lucie County Transit to optimize its fare-free routes and services to ensure racial equity and access to employment opportunities for the entire region, connecting the population of 121,425 residents along the existing transit systems of which 58% are non-white or, of Hispanic origin, 21% are in poverty and 41% only have one car in the household

## PRIVATE & PUBLIC PARTNERSHIPS

The City of Port Saint Lucie, Mattamy Homes, Tradition Community Development District No. 1, University of Central Florida Civil, Environmental and Construction Engineering Department, Beep, St. Lucie County Transit have partnered together to create "Mobility and Opportunity for All."

The local match component of the application represents a broad and deep base of support for the project and an appreciation of the proposed benefits to the community and return on investment to providers of those funds. The public private partnership is seeking a Federal RAISE grant in the amount of approximately \$9.8 million toward a total project cost of approximately \$18.4 million, with the City and private sources headed by Mattamy Homes contributing \$8.5 million or over 46% of the total cost.

For information contact Port St. Lucie's Director of Strategic Initiatives & Innovation:  
Kate Parmelee at [kparmelee@cityofpsl.com](mailto:kparmelee@cityofpsl.com) or 772-281-9986