



**EARLY LEARNING
COALITION**
OF ST. LUCIE COUNTY

**City of Port St. Lucie
Special Council Meeting
May 17, 2021**

Presented by Deb LaBella, Director of Programs



Infant Mental Health/Trauma
Informed Care

Top 3 Objectives and Greatest
Needs of the Community

How can the City help?

Topics of Discussion



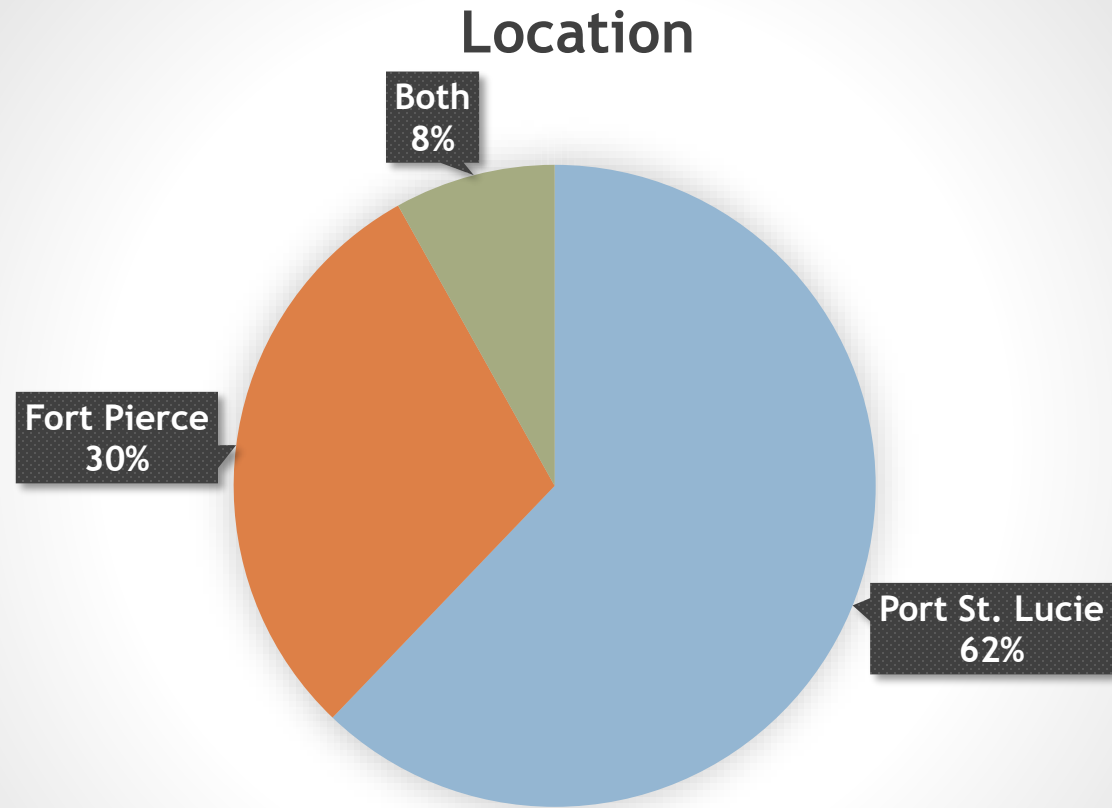
Infant Mental Health and Trauma Informed Care



- Partnership with Tykes & Teens
- Infant Mental Health Therapists
- Trauma Informed Care and Resilience Training
- Pyramid Model Project
- ELC Inclusion Specialist

Provider Survey

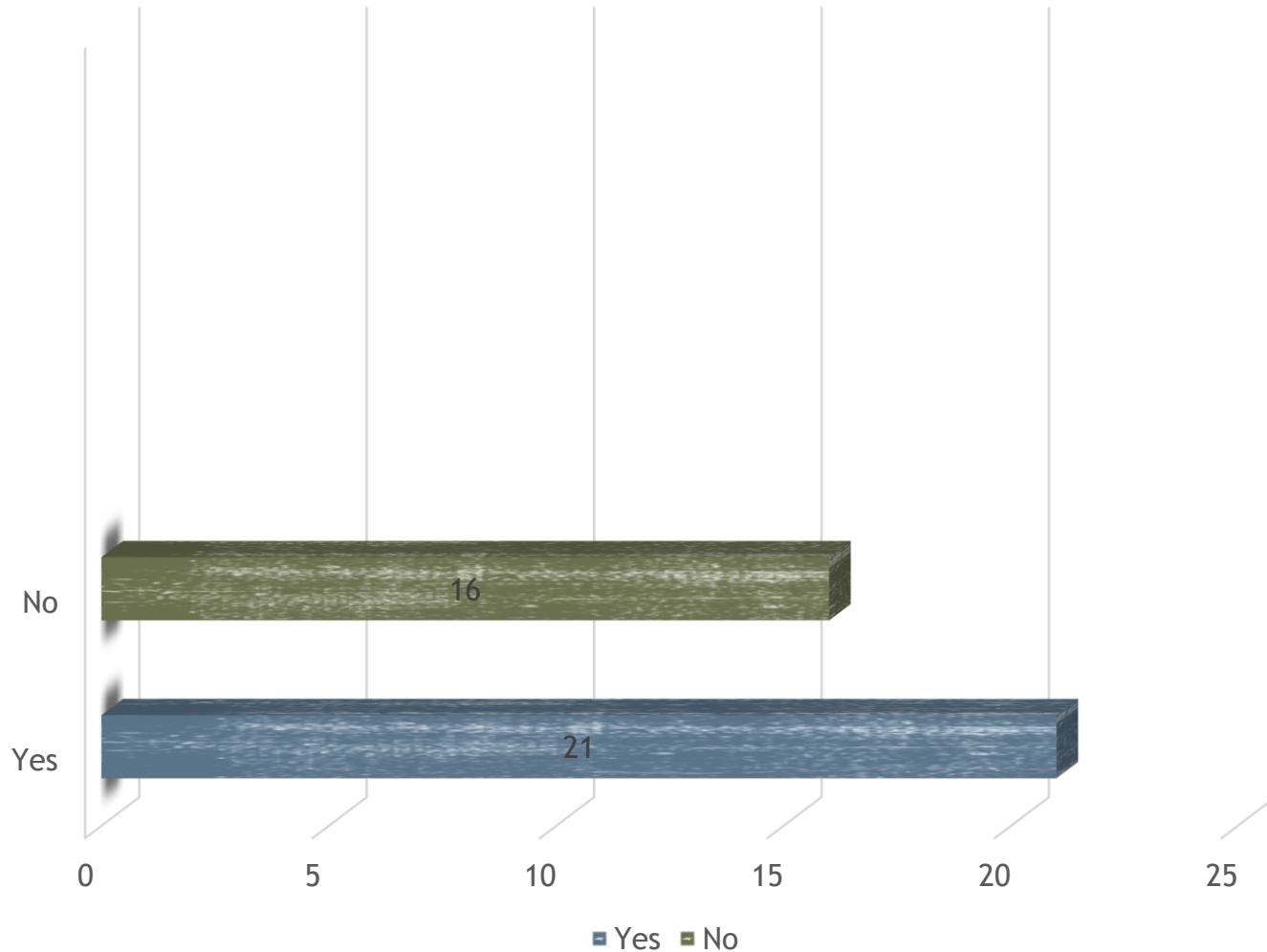
37 responses



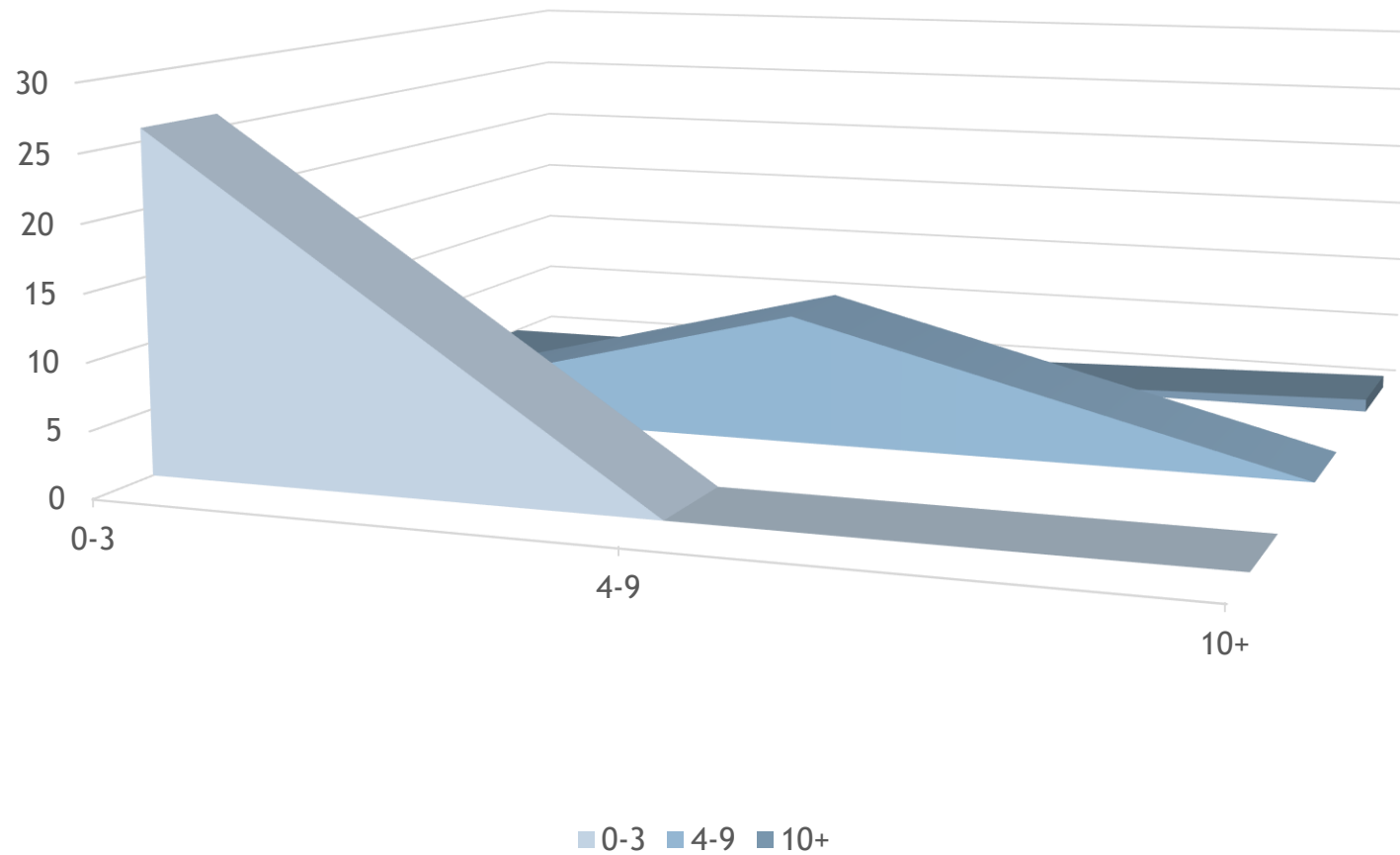
Waitlist

Question:

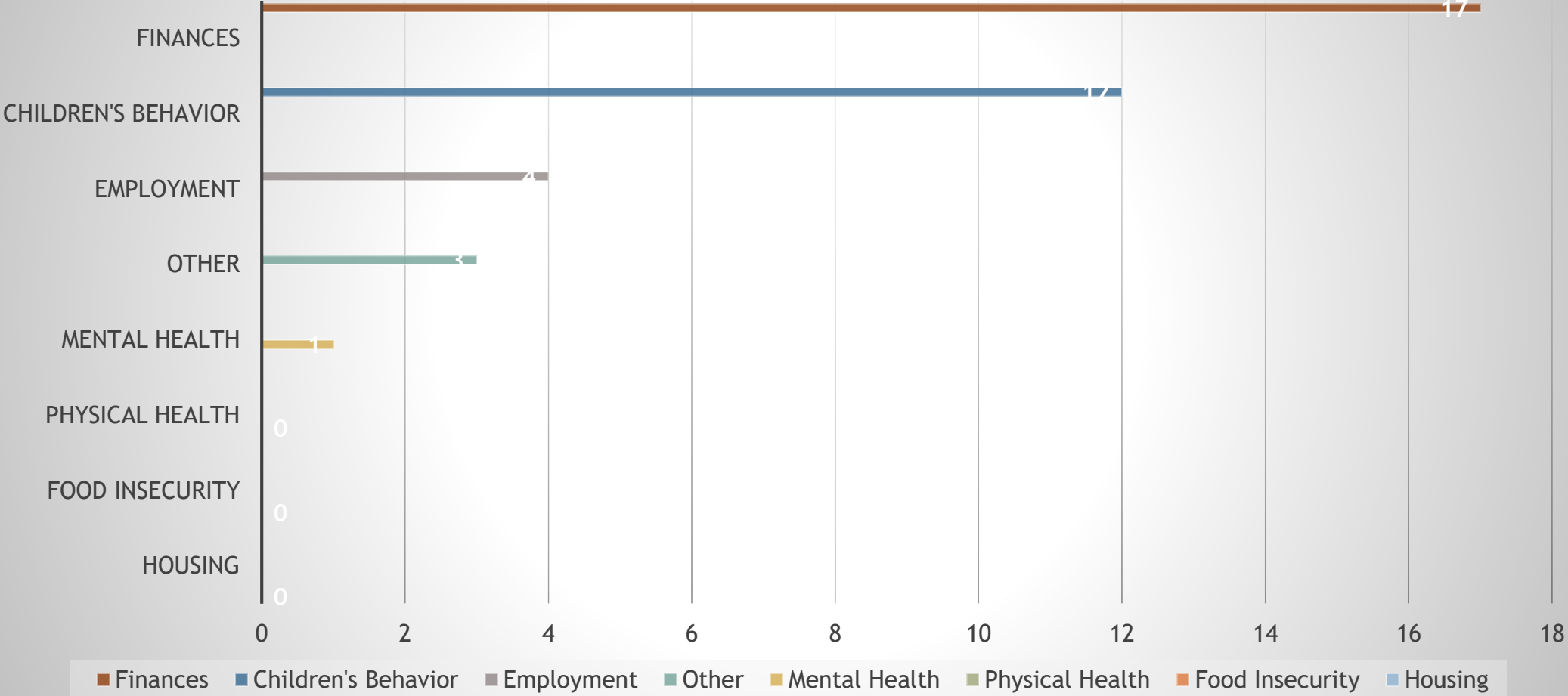
Do Providers have a waitlist due to empty classrooms caused by lack of hiring qualified teachers?



Teacher Vacancies



Top 3 Needs of Families



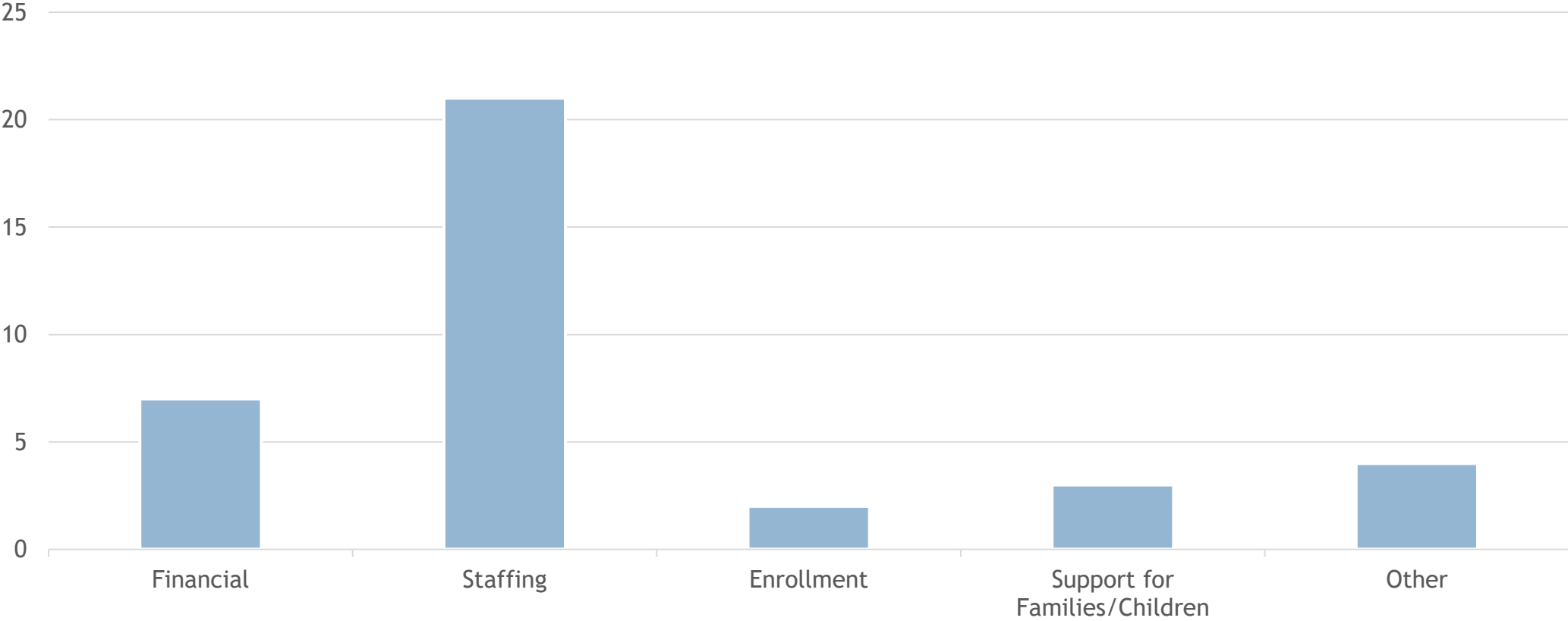


Childcare Provider Supports

- **\$225M CARES Funds**
 - 1st Round of Grants Summer/Fall of 2020
 - 2nd Round of Grants Winter 2020
 - Parent co-payments
 - Reimbursed providers on enrollments
 - First Responders & Designated Healthcare Employers
 - Professional Development Stipends
- Distribution of PPE
- \$1,000 grants for PPE supplies & infrastructure
- **\$635M CRRSA Funds**
 - 3rd Round of Grants Summer 2021
 - 4th Round of Grants Fall 2021
 - Parent co-payments anticipated July - December
 - Instructor/Director bonuses
 - Rising Kindergarten 2021 Program
 - Outreach and Recruitment/Retention of Teachers
- **\$2.5B ARP Funds**
 - Provider Supports
 - Office of Early Learning
 - Early Learning State Partners
 - Start in January 2022



Top needs that childcare providers want you to know



How can the City of Port St. Lucie help?



- Communicate our services.
- Consideration to prioritize childcare owners' requests for permitting.
- Recognition that the childcare industry is essential to the economic stability of our community.
- Sharing of information for family friendly events and other social opportunities.

A large, textured question mark is centered on a dark, textured background. The question mark is rendered in a light, grainy, almost chalk-like style, giving it a three-dimensional appearance. The background consists of a grid of dark, textured squares.

Questions





**EARLY LEARNING
COALITION**
OF ST. LUCIE COUNTY

Thank You