

Connected Trails Map: City of Port St Lucie Recreational Trail Program Grant Exhibit

The Wilderness Park / Cambridge and Port Preserve Trail



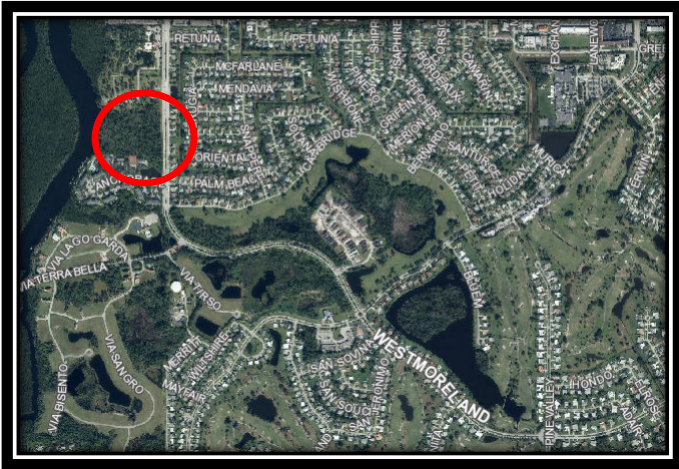
- The Port Preserve and Wilderness Trails were initially combined into one project to secure an RTP grant due to match funding.

Connected Trails Map: City of Port St Lucie Recreational Trail Program Grant Exhibit

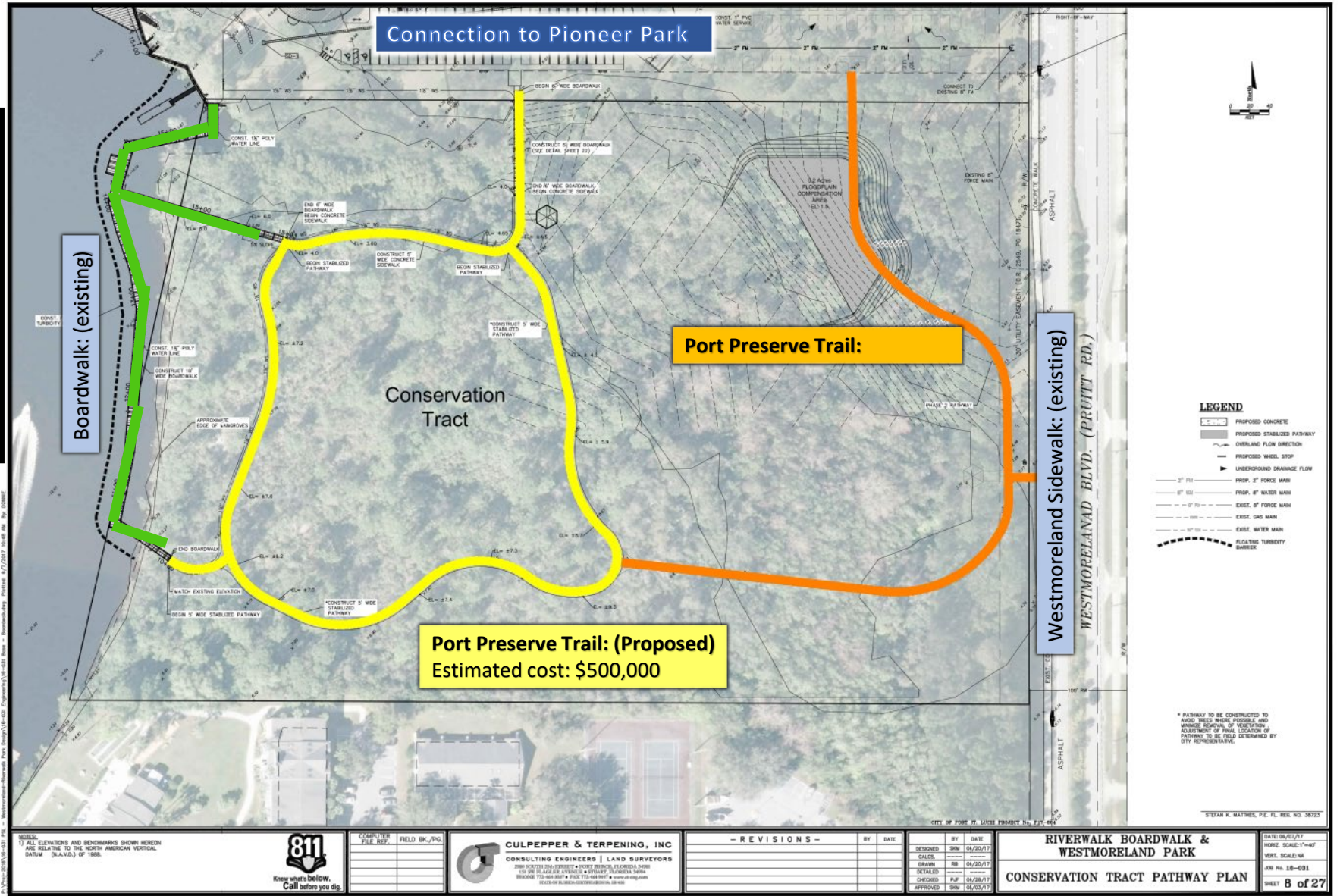
The Wilderness Park / Cambridge and Port Preserve Trail



- Additional funds became available, allowing the match funds to come from just one project, Wilderness Trail.
- Because FDEP required Right of Way documentation for the connection piece along The Anchorage on the St. Lucie (red line), it was decided that separating the two projects was more time efficient and cost effective.



THE PORT DISTRICT PRESERVE TRACT TRAIL CONCEPT



811 Know what's below. Call before you dig.	COMPUTER FILE NO. FIELD BK./PG.	CULPEPPER & TERPENING, INC. CONSULTING ENGINEERS LAND SURVEYORS 2006 HICKORY CREEK ROAD • PORT ST. LUCIE, FLORIDA 34956 TEL: 888-754-8877 • FAX: 772-344-9977 • www.culpepper.com <small>MEMBER OF THE CULPEPPER GROUP</small>	- REVISIONS -		BY DATE	BY DATE DESIGNED: SKW 04/20/17 CHECKED: RB 04/20/17 DRAWN: RB 04/20/17 CHECKED: PUF 04/20/17 APPROVED: SKW 04/20/17	RIVERWALK BOARDWALK & WESTMORELAND PARK CONSERVATION TRACT PATHWAY PLAN	DATE: 04/20/17 HORZ. SCALE: 1"=40' VERT. SCALE: 1"=4' JOB No. 18-031 SHEET 8 of 27
	<small>NOTES:</small> 1) ALL ELEVATIONS AND BENCHMARKS SHOWN HEREON ARE RELATIVE TO THE NORTH AMERICAN VERTICAL DATUM (N.A.V.D.) OF 1988.		CITY OF PORT ST. LUCIE PROJECT No. 211-442		STEPHAN K. MATTHEI, P.E., FL. REG. NO. 58223			

- The Port Preserve is now a stand-alone project and construction will be completed sooner than if it were still included in the grant.
- Plans are 100% complete and the project is ready to go out to bid.