

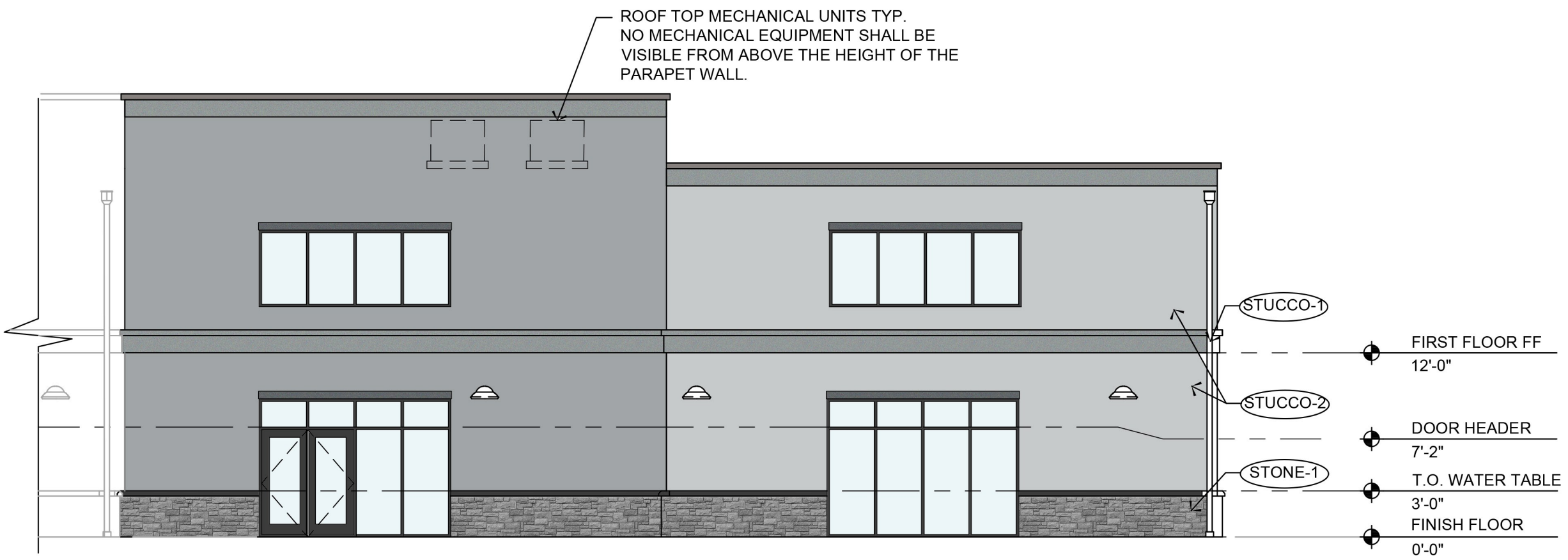
- REQUIRED ARCHITECTURAL ELEMENTS:**
1. VERTICAL, RECTANGULAR WINDOWS
 2. RAISE CORNERS OVER DOORS/WINDOWS
 3. CANOPY/AWNING AT MAIN ENTRANCE
 4. BRACKETS UNDER ROOF EAVES AT TOWER.
 5. STONE/CONCRETE PAVERS
 6. 5% STACKED STONE ON FRONT BUILDING FACADE.

- GENERAL NOTES:**
1. ELEVATION DESIGN AND COLORS MAY NOT BE MODIFIED WITHOUT APPROVAL FROM THE CITY
 2. NO MECHANICAL EQUIPMENT ON THE ROOF SHALL BE VISIBLE ABOVE THE PARAPET WALL.

STUCCO-1	STUCCO-2	STONE-1
COLOR: AFRICAN GRAY SW9182	COLOR: GRAY SCREEN SW7071	QUARRY MILL COLUMBIA CLASSIC GREY TUMBLED ASHAR STYLE STONE VENEER



5 PARTIAL SOUTH ELEVATION
SCALE: 1/8"=1'-0"



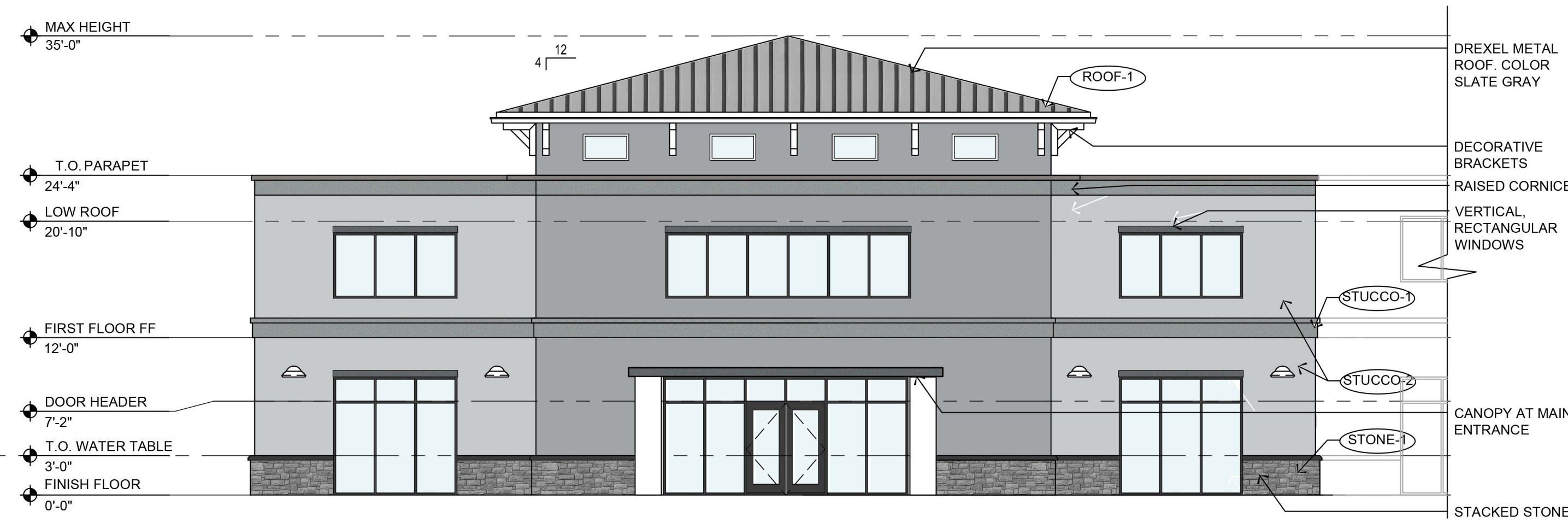
6 PARTIAL SOUTH ELEVATION
SCALE: 1/8"=1'-0"



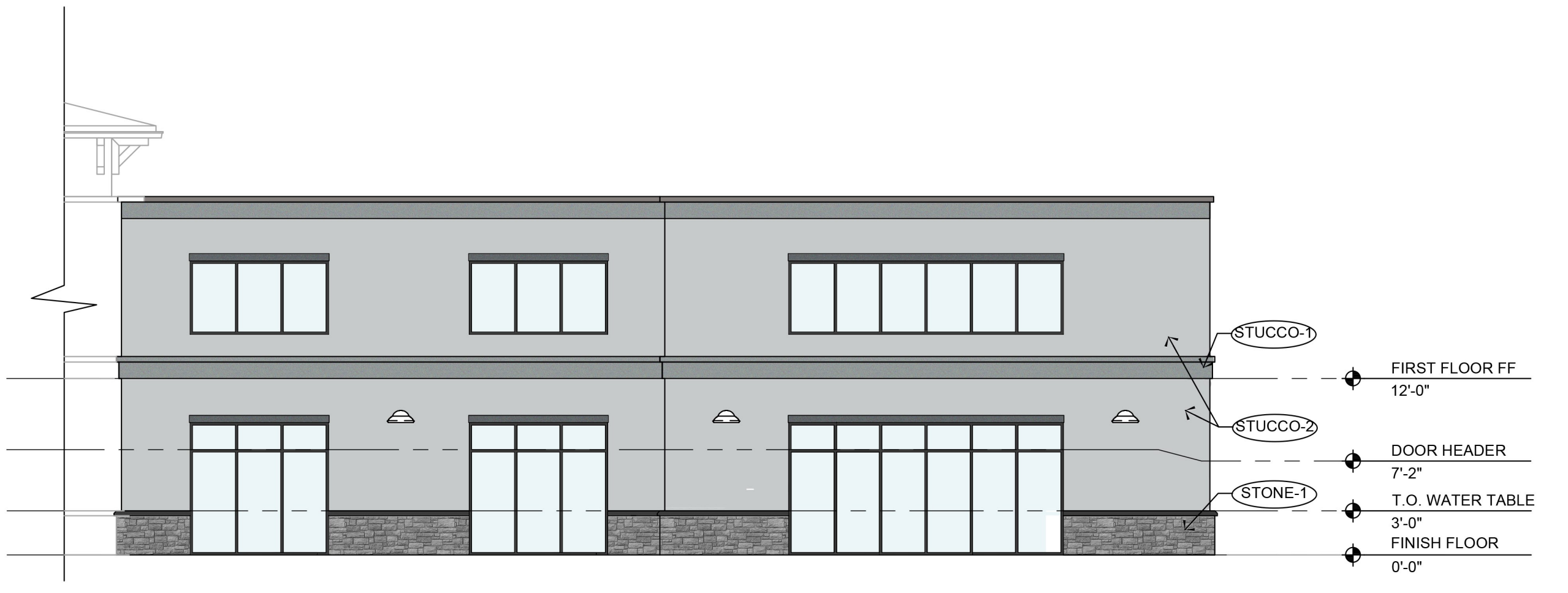
3 WEST ELEVATION
SCALE: 1/8"=1'-0"



4 EAST ELEVATION
SCALE: 1/8"=1'-0"



1 PARTIAL NORTH ELEVATION
SCALE: 1/8"=1'-0"



2 PARTIAL NORTH ELEVATION
SCALE: 1/8"=1'-0"

ISSUE			
NO.	DATE	DESCRIPTION	INT.
1	10/27/2023	FOR REVIEW	MBJ
2	01/02/2024	FOR REVIEW	MBJ

PROGRESS DRAWINGS
NOT FOR CONSTRUCTION

REVISION			
NO.	DATE	DESCRIPTION	INT.
1	5/31/2024	Addition of the color specifications	

Verano PUD-4 Acre Commerce Center Drive
Colored architectural elevations
Office Building

H:\DRAWINGS\JEREMIAH BARON & CO\BARON23-264 - COMMERCE CENTER DR OFFICE BLDG PORT ST LUCIE\SPACE PLANS\BARON22-264-A-200 EXTERIOR ELEVATIONS.DWG BBARRERES PLOTTED: 1/9/2024 12:12 PM