

# Plant Specifications

SPECIES AND SIZE shall conform to those indicated on the drawings. Nomenclature shall conform to STANDARDIZED PLANT NAMES, current edition. All nursery stock shall be in accordance with Florida Grades and Standards for Nursery Plants, latest edition published by the Florida Department of Agriculture and Consumer Services. All plants not otherwise specified as being Florida Fancy or Specimen shall be Florida Grade Number 1 or better as determined by the Florida Division of Plant Industry. Specimen means an exceptionally heavy, symmetrical, tightly knit plant, so trained or favored in its development that first appearance is unquestionable and outstandingly superior in form, number of branches, compactness and symmetry.

## GENERAL REQUIREMENTS

All plants shall be freshly dug, sound healthy, vigorous, well branched, and free of disease and insect eggs and larvae, and shall have adequate root systems. Trees for planting rows shall be uniform in size and shape. All materials shall be subject to approval by the Landscape Architect. Where any requirements are omitted from the plant list, the plants furnished shall be normal for the variety. Plants shall be pruned prior to delivery only upon the approval of the Landscape Architect.

## CONTAINER GROWN STOCK

All container grown material shall be healthy, vigorous, well rooted plants, and established in the container in which they are sold. The plants shall have tops which are good quality and in a healthy growing condition. An established container grown plant shall be grown in that container sufficiently long enough for the new fibrous roots to have developed so that the root mass will retain its shape and hold together when removed from the container. Plant root bound in containers are unacceptable.

## MEASUREMENTS

**Trees:** Height shall be measured from ground to the top most portion of the tree. Small, multi-trunked trees are measured to the top of main body of the crown. Spread shall be measured to the end of branching equally around the crown from the center of the trunk. Measurements are not to include any terminal growth. Single trunk trees shall be free of "V" crotches that could be points of weak limb structure or disease infestation.

**Shrubs:** Heights shall be measured from the ground to the average points where mature plant growth stops. Spread shall be measured to the end of branching equally around the shrub mass. Measurements are not to include any terminal growth.

**Palms:** Clear Trunk (C.T.) shall be measured from the ground at the time of installation to the point where the mature aged trunk joins the immature or green portion of the trunk or the head.

Overall height (O.H.) shall be measured from the ground at the time of installation to a point three quarters the length of the unopened bud. Palms with marred or burned trunks will not be accepted.

## SOIL

Planting soil for use in preparing backfill for plant pits shall be free from heavy clay, stones, lime, plants, roots or other foreign materials or noxious grasses (such as Bermuda or nut grass) and noxious weeds. It shall not contain toxic substances which may be harmful to plant growth.

## COMMERCIAL FERTILIZER

Two fertilizer shall be used in all types of plantings, except palms. Granular fertilizer shall be uniform in composition, dry and free flowing. This fertilizer shall be delivered to the site in the original unopened bags, each bearing the Manufacturer's statement of analysis, and shall meet the following requirements: sixteen (16%) percent nitrogen, seven (7%) percent phosphorus, twelve (12%) percent potassium plus iron. Tablet fertilizer ("Agriform" or equal) in 21 grain size shall meet the following requirements: twenty (20%) percent nitrogen, ten (10%) percent phosphorus, five (5%) percent potassium.

The two fertilizers will be applied at the following rates:

PLANT SIZE	lb.-T-12	"AGRIFORM" TABLET (21 grams)
1 gal.	1/4 lb.	1
3 gal.	1/3 lb.	2
7-15 gal.	1/2 lb.	4
1"-6" caliper	2 lbs./1" caliper	2 1/2" caliper
6" and larger	3 lbs./1" caliper	2 1/2" caliper

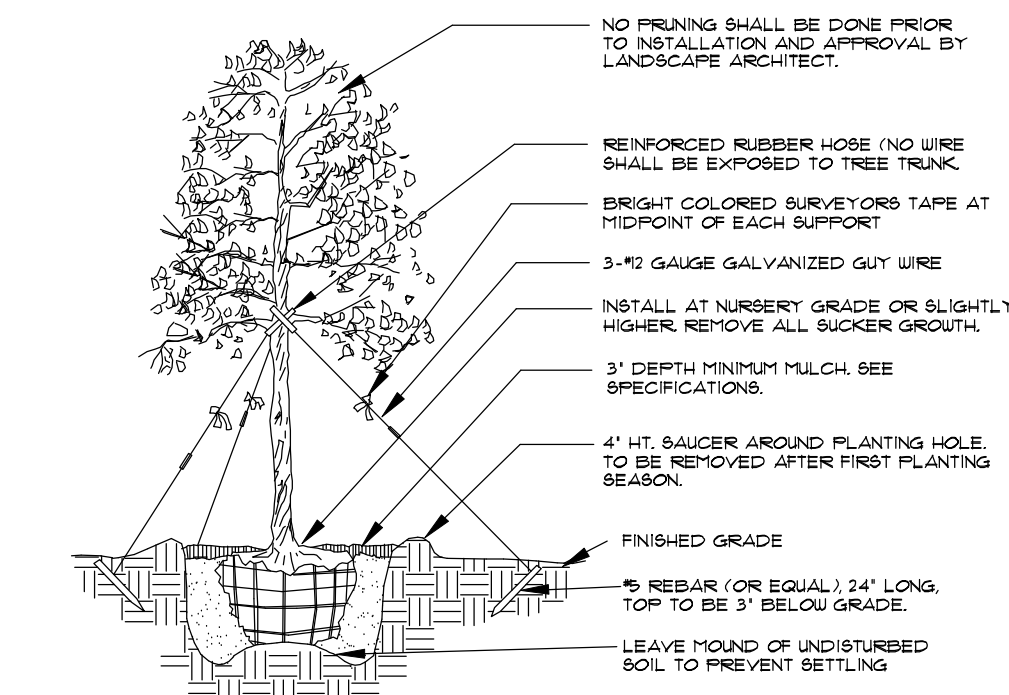
"Florida East Coast Palm Special" will be applied to all palms at installation at a rate of 1/2 lb. per inch of trunk caliper unless otherwise specified.

## MULCH

Mulch material shall be two (2) inches of shredded Class 'A' mulch (sterilized and free of seeds), moistened at the time of application to prevent wind displacement. See plant list for specification.

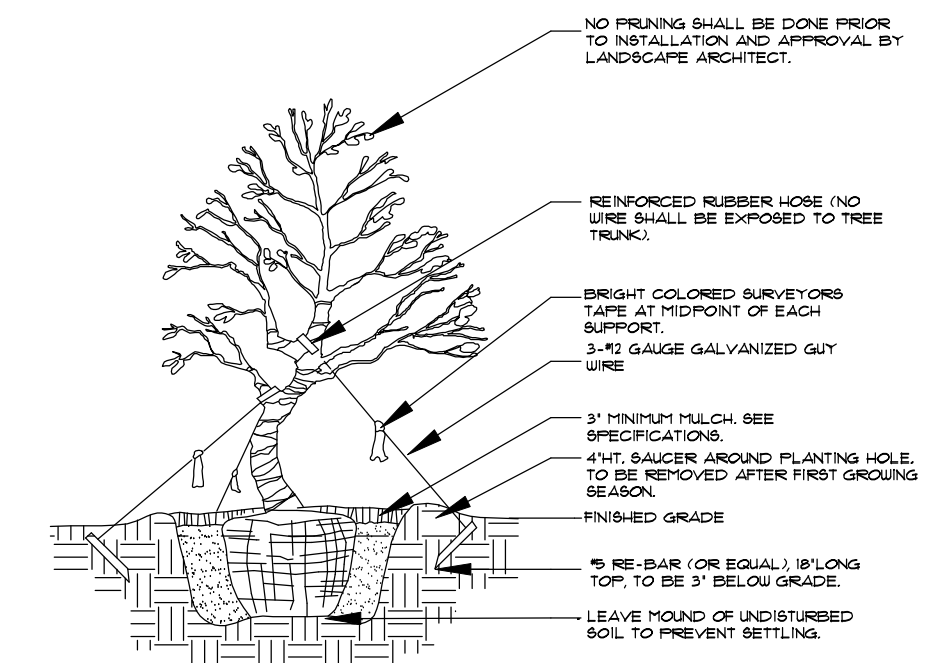
## SUBSTITUTIONS

No substitutions of plant material types or size will be allowed without written consent of the Landscape Architect. B&B material will not be accepted as substitute for container grown material unless previously approved. Alternate substitutions shall be indicated in bid.



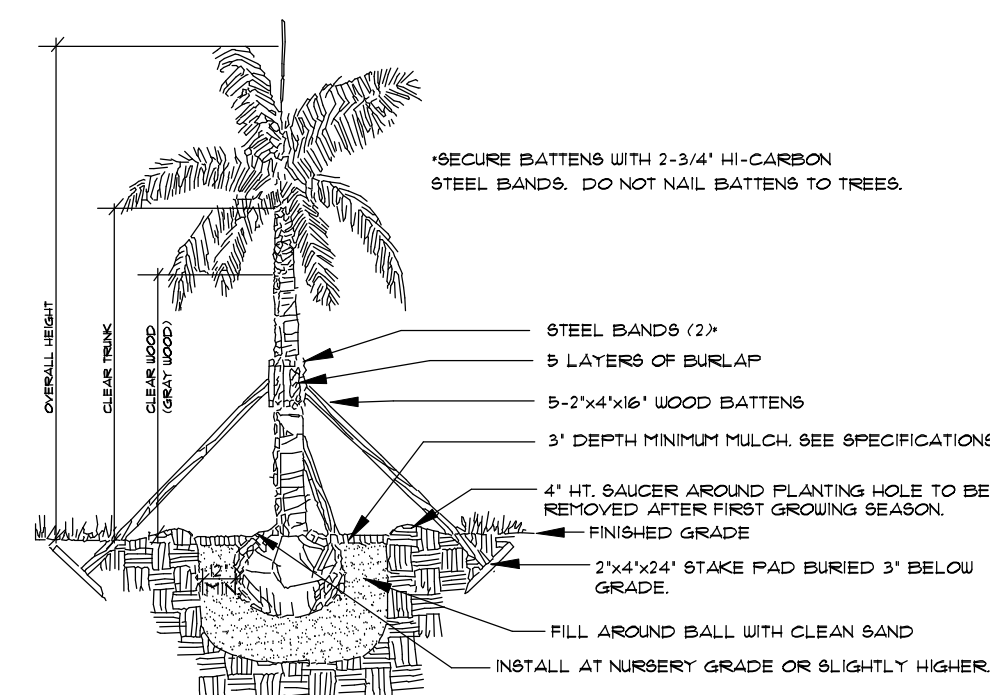
## Tree Planting

SEE SPECIFICATIONS FOR BACKFILL MIXTURE AND FERTILIZATION.  
BRACING - SPECIAL SITE CONDITIONS MAY REQUIRE MODIFICATION TO BRACING TECHNIQUE. LANDSCAPE CONTRACTOR WILL ADEQUATELY BRACE (OR WIRE) ALL TREES TO PREVENT EXCESSIVE MOVEMENT AND MAINTAIN A VERTICAL POSITION.



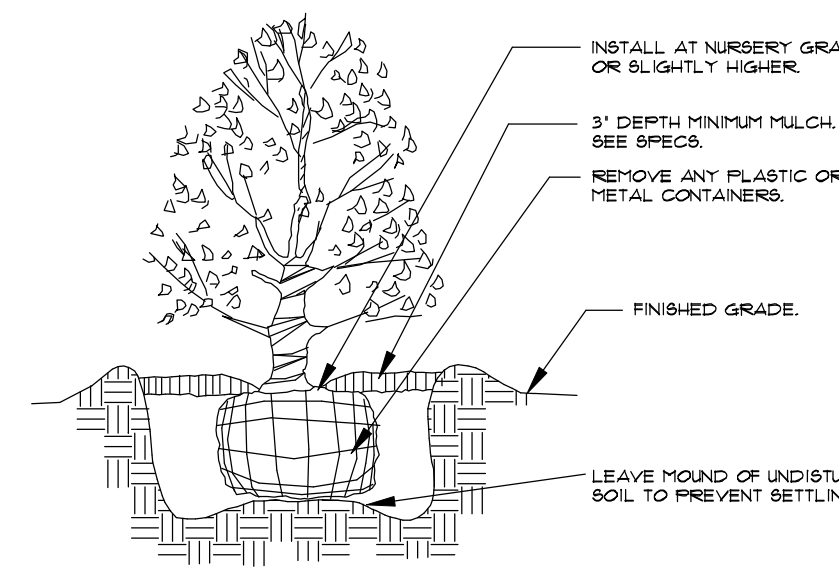
## Irregular & Multi-Stem Tree Planting

FOR TREES 6"-14" HT.  
SEE SPECIFICATIONS FOR BACKFILL MIXTURE AND FERTILIZATION.  
BRACING - SPECIAL SITE CONDITIONS MAY REQUIRE MODIFICATION TO BRACING TECHNIQUE. LANDSCAPE CONTRACTOR WILL ADEQUATELY BRACE (OR WIRE) ALL TREES TO PREVENT EXCESSIVE MOVEMENT AND MAINTAIN A VERTICAL POSITION.



## Palm Planting

APPLIES TO: ROYAL PALMS, QUEEN PALMS, ALEXANDER PALMS, FOXTAIL PALMS.  
SEE SPECIFICATIONS FOR BACKFILL MIXTURE AND FERTILIZATION.  
BRACING - SPECIAL SITE CONDITIONS MAY REQUIRE MODIFICATION TO BRACING TECHNIQUE. LANDSCAPE CONTRACTOR WILL ADEQUATELY BRACE ALL PALMS TO PREVENT EXCESSIVE MOVEMENT AND MAINTAIN A VERTICAL POSITION.



## Shrub Planting

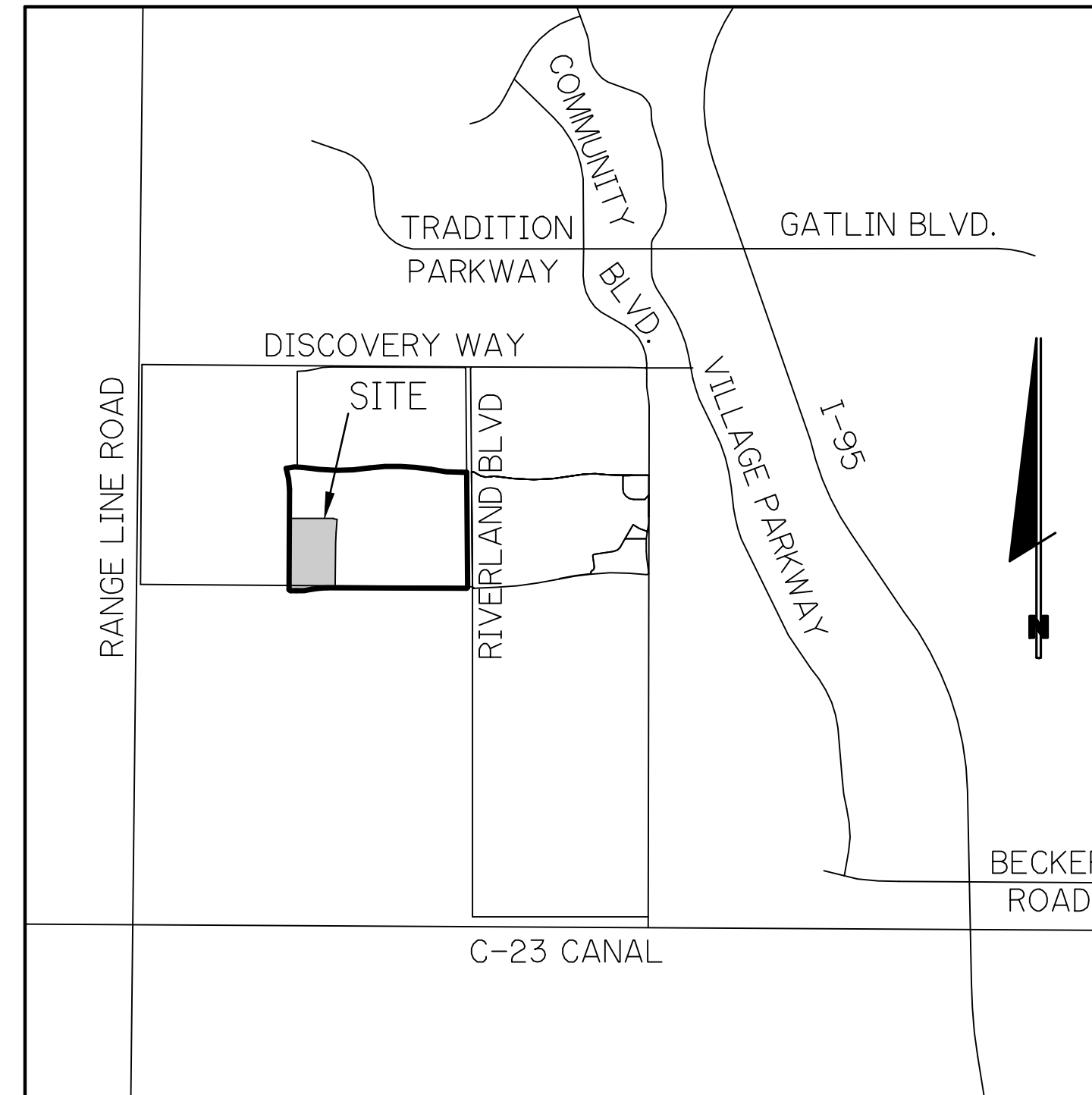
SEE SPECIFICATIONS FOR BACKFILL MIXTURE AND FERTILIZATION.

# RIVERLAND - PARCEL 'D'

## (RIVERLAND MPUD)

# PLANTING PLANS

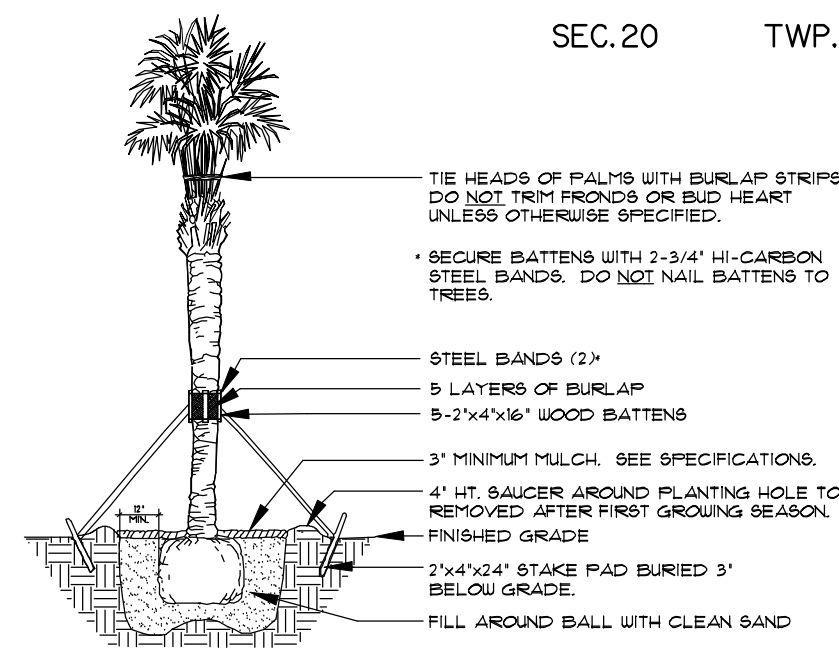
# PLAT SEVEN



## LOCATION MAP

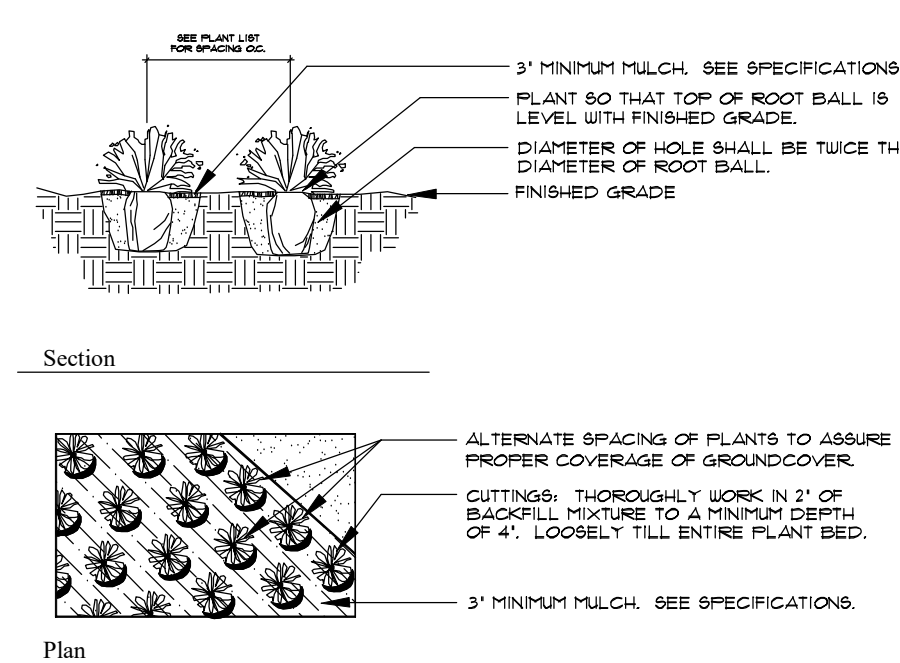
N.T.S.

SEC. 20 TWP. 37S RGE. 39E



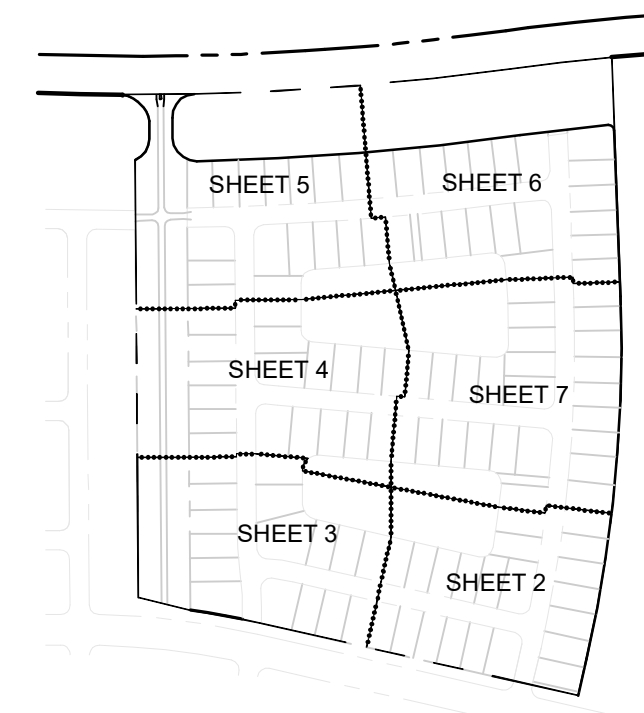
## Palm Planting

APPLIES TO: SABAL PALMS, WASHINGTON PALMS, CANARY ISLAND DATE PALMS, BREVARD DATE PALMS.  
SEE SPECIFICATIONS FOR BACKFILL MIXTURE AND FERTILIZATION.



## Groundcover Planting

SEE SPECIFICATIONS FOR BACKFILL MIXTURE AND FERTILIZATION.



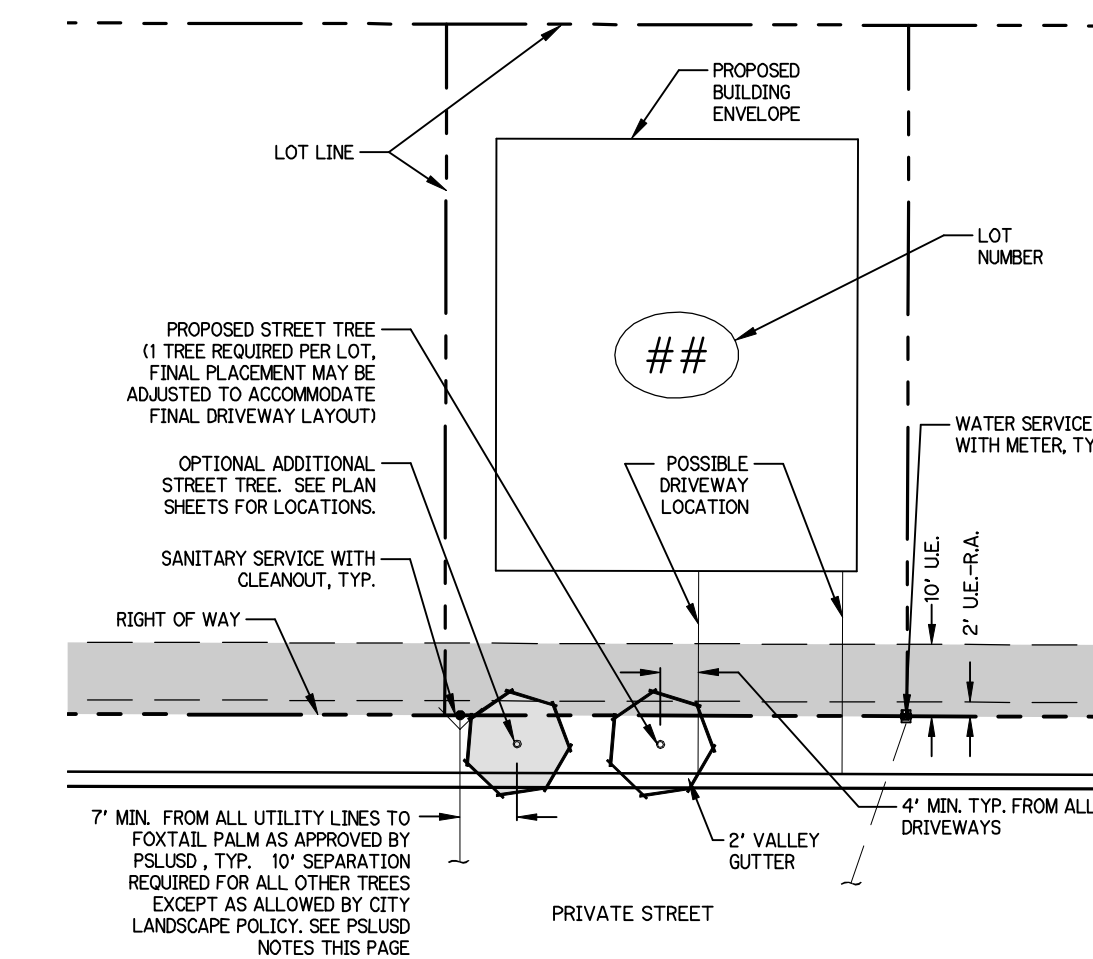
## Sheet Index

P7-1 - Cover Sheet, Index, General Notes

P7-2 thru P7-7 Plat Seven Planting Plans

## Symbols Legend

D.E.	DRAINAGE EASEMENT	O.E.	OVERHANG EASEMENT
L.M.E.	LAKE MAINTENANCE EASEMENT	G.E.	GRADING EASEMENT
L.M.A.E.	LAKE MAINTENANCE ACCESS EASEMENT	PSL	PORT ST LUCIE
R.O.W.	RIGHT OF WAY	L.E.	LANDSCAPE EASEMENT
U.E.	UTILITY EASEMENT	D.S.E.	DRAINAGE SWALE EASEMENT
U.E.-R.A.	UTILITY EASEMENT - RESTRICTED AREA (SEE "U.E." PLAT DEDICATION)	O.S.	OPEN SPACE
STM	STORM SEWER LINE WITH MANHOLE	S&M	SEED & MULCH
STM	STORM SEWER LINE WITH CATCH BASIN	●	SIGN
SAN	SANITARY SEWER LINE WITH MANHOLE	①	LOT NUMBER
WM	WATER MAIN	⊕	FIRE HYDRANT
⊕	WATER SVC. TO LOT WITH METER W.M.		
←	SANITARY SVC. TO LOT WITH CLEANOUT C.O.		



## Typical Lot Layout Detail

## PSLUD Notes:

LANDSCAPE PLANS SHALL BE SUBMITTED FOR THE PROJECT INDICATING THE LOCATION OF LANDSCAPE AREAS, PERIMETER WALLS, FOUNDATIONS, BENCHES, TREE WELLS, FENCES, GATES, SIGNS, DECORATIVE ROCKS, SCULPTURE, FOUNTAINS, AND ANY OTHER FEATURES THAT MAY INFLUENCE THE LOCATION OF WATER / WASTEWATER / RECLAIMED WATER FACILITIES. ALSO EXISTING AND PROPOSED WATER / WASTEWATER / RECLAIMED FACILITIES, AND RIGHT-OF-WAY, LOT LINES AND EASEMENTS. THE PLANS SHALL INCLUDE AND CONFORM TO THE FOLLOWING STANDARD NOTES:

- NO LANDSCAPING SHALL BE PLANTED IN A MANNER THAT WOULD ADVERSELY AFFECT UTILITY EASEMENTS. LANDSCAPING SHALL BE IN COMPLIANCE WITH CHAPTER 84 OF THE CITY OF PORT ST. LUCIE CODE OF ORDINANCES AND PSLUD TECHNICAL SPECIFICATIONS AND POLICIES.
- ALL LANDSCAPING WITHIN CITY UTILITY EASEMENTS SHALL COMPLY WITH CHAPTER 84 OF THE CITY'S CODE OF ORDINANCES AND PSLUD TECHNICAL SPECIFICATIONS, POLICIES, AND CODES.
- ALL LANDSCAPING SHALL MEET THE LATEST PSLUD LANDSCAPE POLICY AND SHALL NOT BE PLACED IN A MANNER THAT WOULD CREATE CONFLICTS WITH THE INTENDED OPERATION AND MAINTENANCE OF ANY EXISTING UTILITY.
- WITH THE EXCEPTION OF FOXTAIL PALMS, TREES SHALL NOT BE PLANTED WITHIN 10' OF ANY PSLUD INFRASTRUCTURE. AS SPECIFICALLY APPROVED BY THE PSLUD, FOXTAIL PALMS MAY BE A DISTANCE NOT LESS THAN SEVEN (7) FEET OF ANY PSLUD INFRASTRUCTURE. ALL MEASUREMENTS ARE FROM OUTSIDE TO OUTSIDE, NOT CENTERLINE TO CENTERLINE. EXAMPLE: OUTSIDE OF PIPE TO NEAREST POINT ON TREE TRUNK.
- NO LANDSCAPING OTHER THAN SOFT GRASSES SHALL BE LOCATED WITHIN 5' OF A PSLUD APPURTENANCE SUCH AS A WATER METER ASSEMBLY, BACK-FLOW DEVICE, FIRE HYDRANT OR SEWER CLEANOUT, ETC.

UTILITY & DRAINAGE EASEMENTS TO REMAIN CLEAR OF TREES UNLESS OTHERWISE APPROVED BY THE EASEMENT HOLDER.

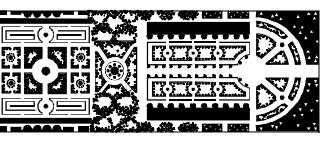
## PLAT 7 LANDSCAPE DATA TABLE

	Trees Required	Trees Provided
STREET TREES (1 TREE PER LOT)		
Street Tree - WB10 Wodytia bifurcata / Foxtail Palm	116	116

NOTE: STREET TREES SHOWN HEREON ARE CONCEPTUAL IN NATURE AND MAY BE FIELD ADJUSTED TO MAINTAIN PROPER CLEARANCE FROM REQUIRED IMPROVEMENTS INCLUDING DRIVEWAYS. SEE TYPICAL LOT LAYOUT DETAIL FOR TREE SEPARATION GUIDELINES.

PSLUD #5268G

PSL PROJECT NO. P23-190



PARKER-YANNETTE  
design group, inc.

LANDSCAPE ARCHITECTURE  
PLANNING • GRAPHICS

4425 Military Trail  
Suite 202  
Jupiter, Florida 33458

Telephone: (561) 747-5069  
Fax: (561) 747-2041  
Email: mail@pydg.com

License #LA0001347

RIVERLAND - PARCEL 'D' - PLAT 7

Developer: Riverland Associates III, LLLP

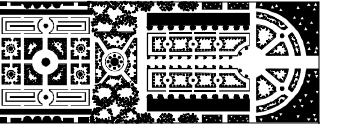
PORT ST. LUCIE, FLORIDA

DATE: 10/18/23  
DRAWN BY: AJOITY  
JOB NO.: 22-061  
SCALE: N/A  
FILENAME: RLD STP

REVISIONS:  
12/24 City cmnts  
2/27/24 City cmnts  
5/28/24 City cmnts  
7/24 City cmnts  
9/10/24 Utility updates  
9/23/24 Utility updates

SHEET:

07-1



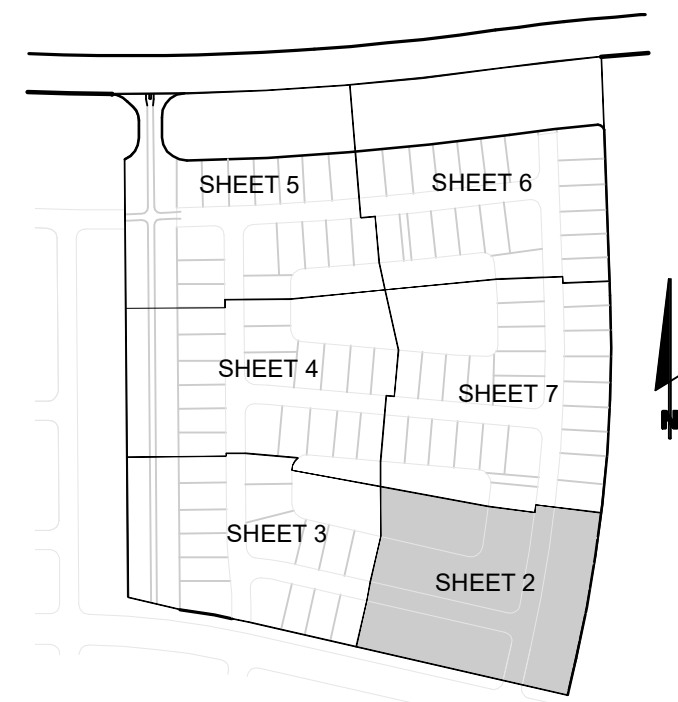
**PARKER-YANNETTE**  
design group, inc.

LANDSCAPE ARCHITECTURE  
PLANNING • GRAPHICS

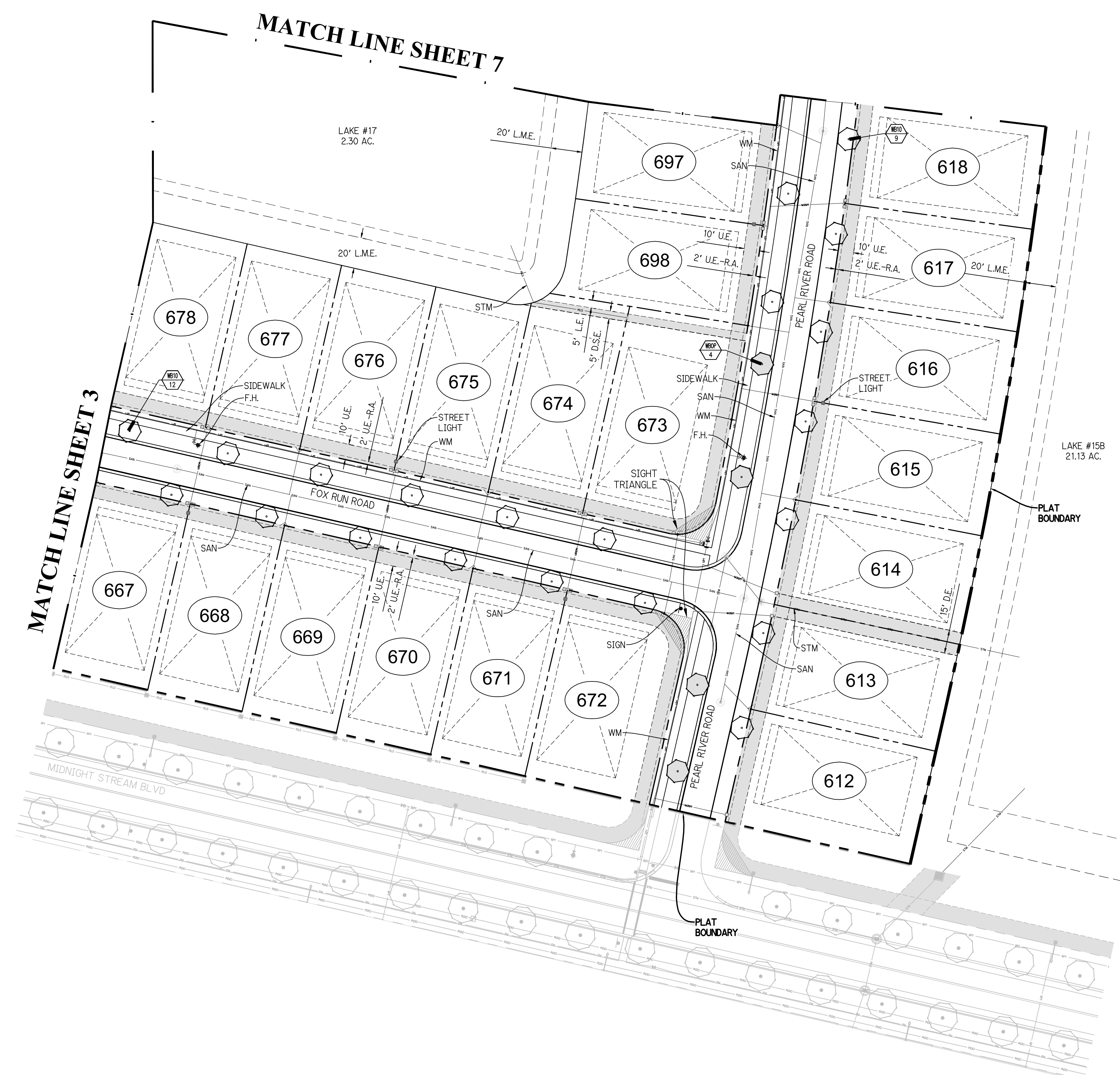
4425 Military Trail  
Suite 202  
Jupiter, Florida 33458

Telephone: (561) 747-5069  
Fax: (561) 747-2041  
Email: mail@pydg.com

License #LA0001347



KEY MAP  
N.T.S.



**Plant List** (Sheet P7-2 Only)

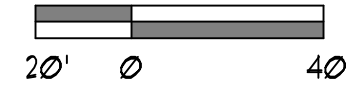
SYM.	QTY.	NAME	SPECIFICATIONS
PALMS			
WEL0	21	Wodyetia bifurcata / Foxtail Palm	10' cl., 4" min. cal. crown shaft, straight trunk, full head, unscarred trunk, intact fronds
WBCP	4	Optional Additional Street Trees - Wodyetia bifurcata / Foxtail Palm	10' cl., 4" min. cal. crown shaft, straight trunk, full head, unscarred trunk, intact fronds

**NOTE:**  
ALL PLANT MATERIAL SHALL MEET OR EXCEED SIZE AND CONTAINER SPECIFICATIONS IN PLANT LIST. PLANT MATERIALS NOT MEETING SPECIFICATIONS WILL BE REJECTED. CONTRACTOR TO COORDINATE AVAILABILITY ISSUES WITH GRABER PRIOR TO COMMENCING WORK.

\* DENOTES NATIVE SPECIES

**Symbols Legend**

D.E.	DRAINAGE EASEMENT	O.E.	OVERHANG EASEMENT
L.M.E.	LAKE MAINTENANCE EASEMENT	G.E.	GRADING EASEMENT
L.M.A.E.	LAKE MAINTENANCE ACCESS EASEMENT	P.S.L.	PORT ST LUCIE
R.O.W.	RIGHT OF WAY	L.E.	LANDSCAPE EASEMENT
U.E.	UTILITY EASEMENT	D.S.E.	DRAINAGE SWALE EASEMENT
U.E.-R.A.	UTILITY EASEMENT - RESTRICTED AREA (SEE U.E. PLAT INDICATION)	O.S.	OPEN SPACE
STM	STORM SEWER LINE WITH MANHOLE	S&M	SEED & MULCH
SSM	STORM SEWER LINE WITH CATCH BASIN	SSN	SSN
SAN	SANITARY SEWER LINE WITH MANHOLE	1	LOT NUMBER
WM	WATER MAIN	⊕	FIRE HYDRANT
W	WATER SVC. TO LOT WITH METER		
WS	SANITARY SVC. TO LOT WITH CLEANOUT		
C.O.			



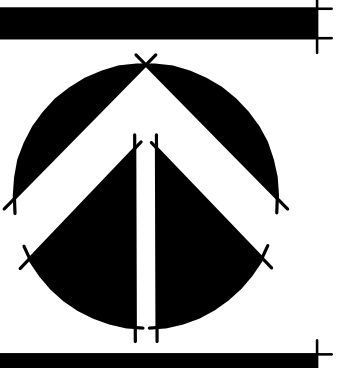
P&LUSD #5268G

P&L PROJECT NO. P23-190

**RIVERLAND - PARCEL 'D' - PLAT 7**  
Developer: Riverland Associates III, LLLP  
PORT ST. LUCIE, FLORIDA  
PLANTING PLAN

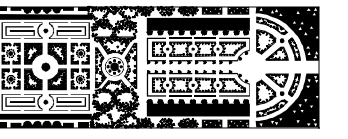
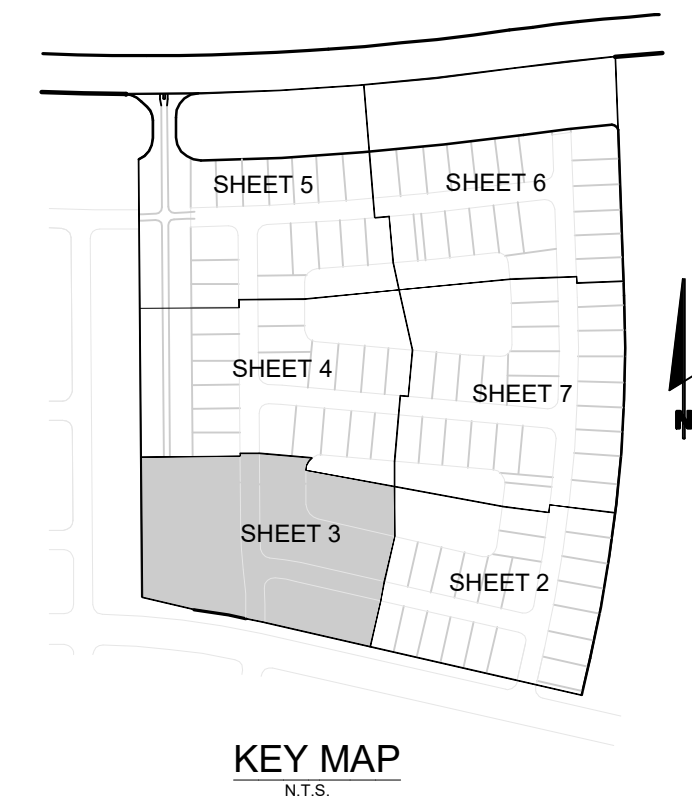
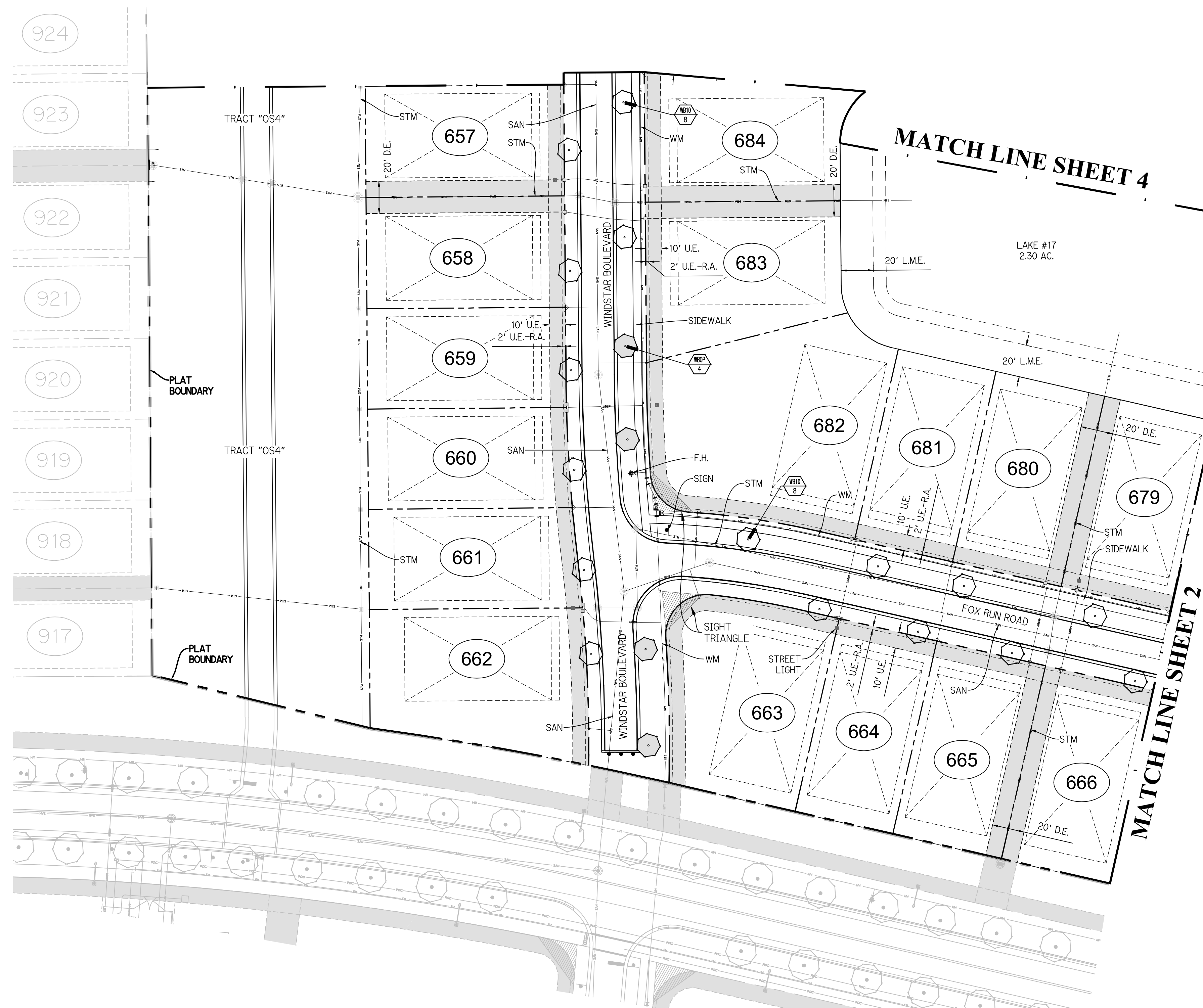
DATE: 10/18/23  
DRAWN BY: ALDITY  
JOB NO.: 23-067  
SCALE: 1" = 40'-0"  
FILENAME: RLD STP

**REVISIONS:**  
1/22/24 City cmnts  
2/27/24 City cmnts  
5/28/24 City cmnts  
7/24/24 City cmnts  
9/10/24 Utility updates  
9/23/24 Utility updates



SHEET:  
**P7-2**





**PARKER-YANNETTE**  
design group, inc.

LANDSCAPE ARCHITECTURE  
PLANNING • GRAPHICS  
4425 Military Trail  
Suite 202  
Jupiter, Florida 33458

Telephone: (561) 747-5069  
Fax: (561) 747-2041  
Email: mail@pydg.com

License #LA0001347

**RIVERLAND - PARCEL 'D' - PLAT 7**  
Developer: Riverland Associates III, LLLP  
PORT ST. LUCIE, FLORIDA  
PLANTING PLAN

DATE: 10/18/23  
DRAWN BY: ALJOTY  
JOB NO.: 23-067  
SCALE: 1" = 40'-0"  
FILENAME: RLD STP

REVISIONS:  
1/22/24 City cmnts  
2/27/24 City cmnts  
5/28/24 City cmnts  
7/24/24 City cmnts  
9/12/24 Utility updates  
9/23/24 Utility updates

**Plant List (Sheet P7-3 Only)**

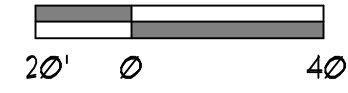
SYM	QTY	NAME	SPECIFICATIONS
PALMS	16	Wodyetia bifurcata / Foxtail Palm	10' c.t., 4" min. cal. crown shaft, straight trunk, full head, unscarred trunk, intact fronds
UBOP	4	Optional Additional Street Tree - Wodyetia bifurcata / Foxtail Palm	10' c.t., 4" min. cal. crown shaft, straight trunk, full head, unscarred trunk, intact fronds

NOTE:  
ALL PLANT MATERIAL SHALL MEET OR EXCEED SIZE AND CONTAINER SPECIFICATIONS IN PLANT LIST. PLANT MATERIALS NOT MEETING SPECIFICATIONS WILL BE REJECTED. CONTRACTOR TO COORDINATE AVAILABILITY ISSUES WITH OWNER PRIOR TO COMMENCING WORK.

\* DENOTES NATIVE SPECIES

**Symbols Legend**

D.E.	DRAINAGE EASEMENT	O.E.	OVERHANG EASEMENT
L.M.E.	LAKE MAINTENANCE EASEMENT	G.E.	GRADING EASEMENT
L.M.A.E.	LAKE MAINTENANCE ACCESS EASEMENT	PSL	PORT ST LUCIE
R.O.W.	RIGHT OF WAY	L.E.	LANDSCAPE EASEMENT
U.E.	UTILITY EASEMENT	D.S.E.	DRAINAGE SWALE EASEMENT
U.E.-R.A.	UTILITY EASEMENT - RESTRICTED AREA (SEE "U.E." PLAT INDICATION)	O.S.	OPEN SPACE
STM	STORM SEWER LINE WITH MANHOLE	S&M	SEED & MULCH
STM	STORM SEWER LINE WITH CATCH BASIN	SSN	SSN
SAN	SANITARY SEWER LINE WITH MANHOLE	①	LOT NUMBER
WM	WATER MAIN	⚡	FIRE HYDRANT
W	WATER SVC. TO LOT WITH METER		
WS	SANITARY SVC. TO LOT WITH CLEANOUT		
C.O.			

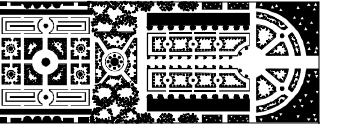


P&LUSD #5268G

P&L PROJECT NO. P23-190

SHEET:

**P7-3**



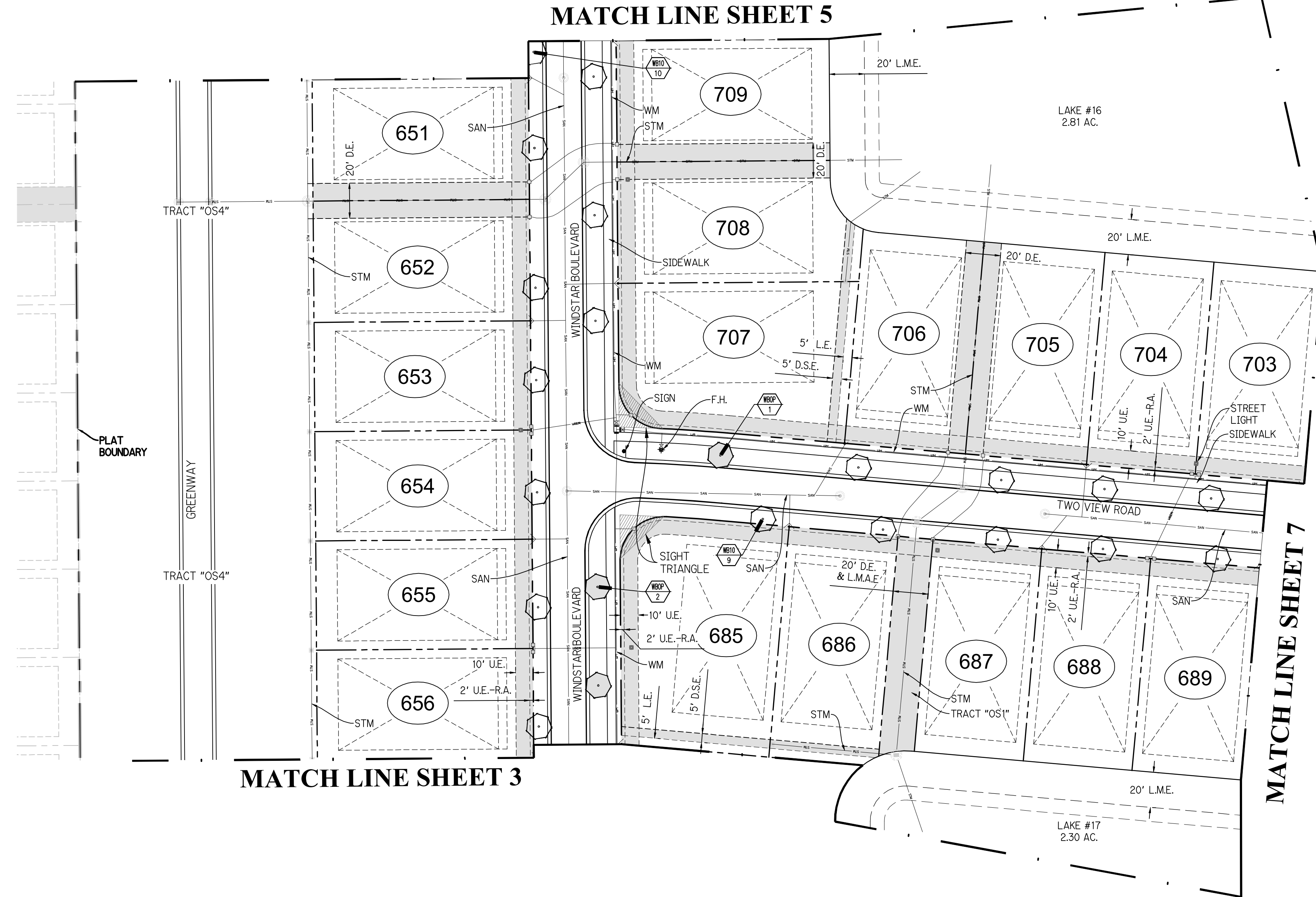
**PARKER-YANNETTE**  
design group, inc.

LANDSCAPE ARCHITECTURE  
PLANNING • GRAPHICS  
4425 Military Trail  
Suite 202  
Jupiter, Florida 33458

Telephone: (561) 747-5069  
Fax: (561) 747-2041  
Email: mail@pydg.com  
License #LA0001347



KEY MAP  
N.T.S.



MATCH LINE SHEET 5

MATCH LINE SHEET 3

MATCH LINE SHEET 7

Plant List (Sheet P7-4 Only)

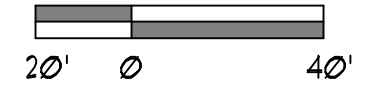
SYM.	QTY.	NAME	SPECIFICATIONS
PAL#8			
WBOP 18		Wodygetia bifurcata / Foxtail Palm	10' c.t., 4' min. cal. crown shaft, straight trunk, full head, unscarred trunk, intact fronds
WBOP 3		Optional Additional Street Trees - Wodygetia bifurcata / Foxtail Palm	10' c.t., 4' min. cal. crown shaft, straight trunk, full head, unscarred trunk, intact fronds

NOTE:  
ALL PLANT MATERIAL SHALL MEET OR EXCEED SIZE AND CONTAINER SPECIFICATIONS IN PLANT LIST. PLANT MATERIALS NOT MEETING SPECIFICATIONS WILL BE REJECTED. CONTRACTOR TO COORDINATE AVAILABILITY ISSUES WITH OWNER PRIOR TO COMMENCING WORK.

\* DENOTES NATIVE SPECIES

Symbols Legend

D.E.	DRAINAGE EASEMENT	O.E.	OVERHANG EASEMENT
L.M.E.	LAKE MAINTENANCE EASEMENT	G.E.	GRADING EASEMENT
L.M.A.E.	LAKE MAINTENANCE ACCESS EASEMENT	PSL	PORT ST LUCIE
R.O.W.	RIGHT OF WAY	L.E.	LANDSCAPE EASEMENT
U.E.	UTILITY EASEMENT	D.S.E.	DRAINAGE SWALE EASEMENT
U.E.-R.A.	UTILITY EASEMENT - RESTRICTED AREA (SEE "U.E." PLANT INDICATION)	O.S.	OPEN SPACE
STM	STORM SEWER LINE WITH MANHOLE	S&M	SEED & MULCH
SIM	STORM SEWER LINE WITH CATCH BASIN	SSN	SSN
SAN	SANITARY SEWER LINE WITH MANHOLE	1	LOT NUMBER
WM	WATER MAIN	+	FIRE HYDRANT
W/M	WATER SVC. TO LOT WITH METER		
S/C	SANITARY SVC. TO LOT WITH CLEANOUT		
C.O.			



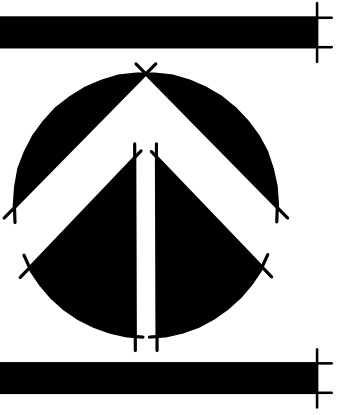
PSLUSD #5268G

PSL PROJECT NO. P23-190

**RIVERLAND - PARCEL 'D' - PLAT 7**  
Developer: Riverland Associates III, LLLP  
PORT ST. LUCIE, FLORIDA  
PLANTING PLAN

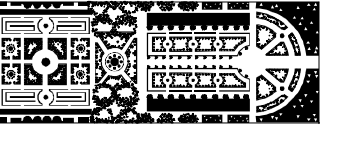
DATE: 10/18/23  
DRAWN BY: ALDITY  
JOB NO.: 23-067  
SCALE: 1" = 40'-0"  
FILENAME: RLD STP

REVISIONS:  
1/22/24 City cmnts  
2/27/24 City cmnts  
5/28/24 City cmnts  
7/24/24 City cmnts  
9/10/24 Utility updates  
9/23/24 Utility updates



SHEET:

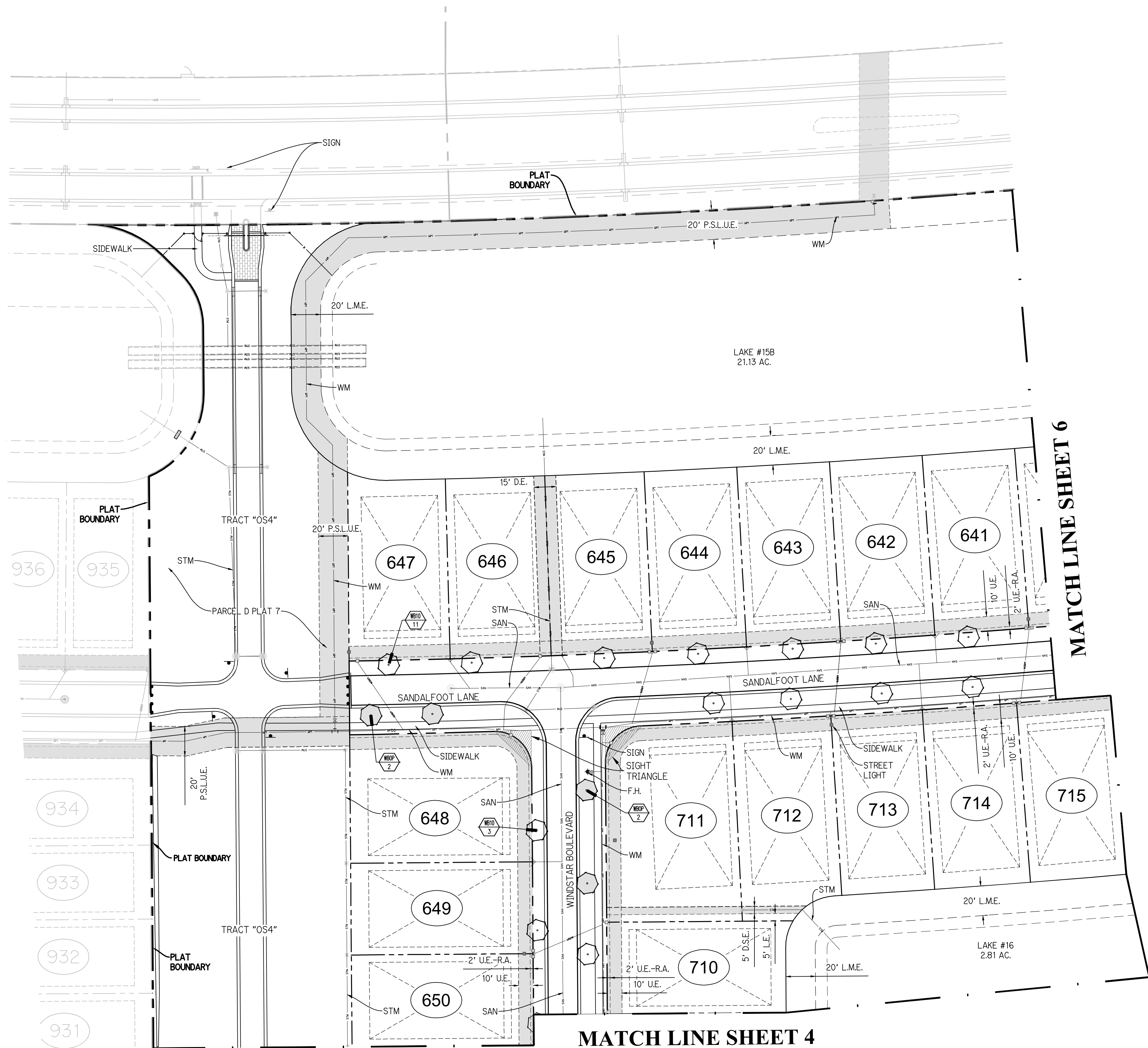
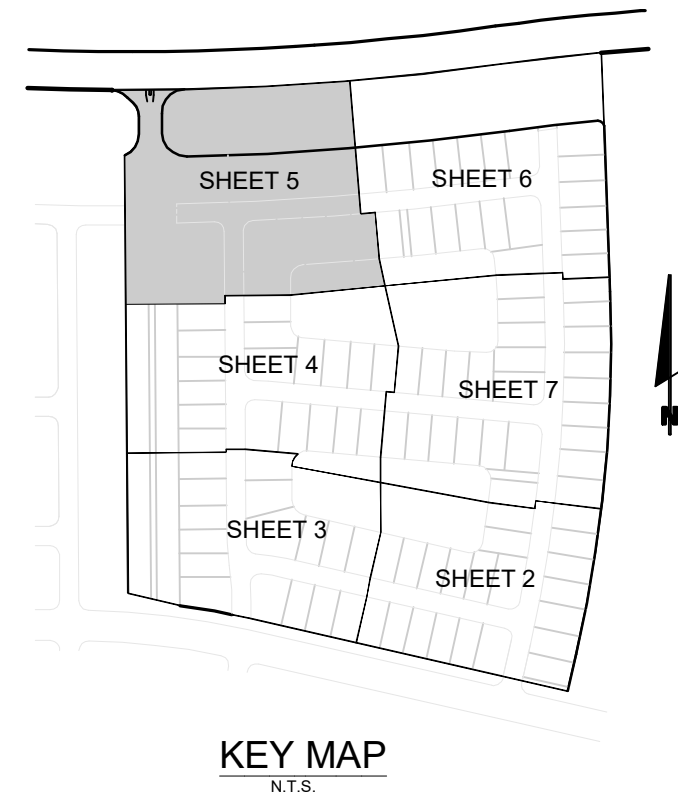
P7-4



**PARKER-YANNETTE**  
design group, inc.

LANDSCAPE ARCHITECTURE  
PLANNING • GRAPHICS  
4425 Military Trail  
Suite 202  
Jupiter, Florida 33458

Telephone: (561) 747-5069  
Fax: (561) 747-2041  
Email: mail@pydg.com  
License #LA0001347



**Plant List** (Sheet P7-5 Only)

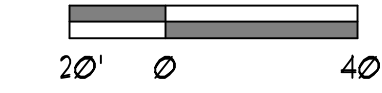
SYM.	QTY.	NAME	SPECIFICATIONS
WE10	14	Wodyetia bifurcata / Foxhall Palm	10' c.l., 4" min. cal. crown shaft, straight trunk, full head, unscarred trunk, intact fronds
WBOP	4	Optional Additional Street Trees - Wodyetia bifurcata / Foxhall Palm	10' c.l., 4" min. cal. crown shaft, straight trunk, full head, unscarred trunk, intact fronds

**NOTE:**  
ALL PLANT MATERIAL SHALL MEET OR EXCEED SIZE AND CONTAINER SPECIFICATIONS IN PLANT LIST. PLANT MATERIALS NOT MEETING SPECIFICATIONS WILL BE REJECTED. CONTRACTOR TO COORDINATE AVAILABILITY ISSUES WITH OWNER PRIOR TO COMMENCING WORK.

\* DENOTES NATIVE SPECIES

**Symbols Legend**

D.E.	DRAINAGE EASEMENT	O.E.	OVERHANG EASEMENT
L.M.E.	LAKE MAINTENANCE EASEMENT	G.E.	GRADING EASEMENT
L.M.A.E.	LAKE MAINTENANCE ACCESS EASEMENT	PSL	PORT ST LUCIE
R.O.W.	RIGHT OF WAY	L.E.	LANDSCAPE EASEMENT
U.E.	UTILITY EASEMENT	D.S.E.	DRAINAGE SWALE EASEMENT
U.E.-R.A.	UTILITY EASEMENT - RESTRICTED AREA (SEE "U.E." PLAT DEDICATION)	O.S.	OPEN SPACE
STM	STORM SEWER LINE WITH MANHOLE	S&M	SEED & MULCH
STM	STORM SEWER LINE WITH CATCH BASIN	SSN	SSN
SAN	SANITARY SEWER LINE WITH MANHOLE	1	LOT NUMBER
WM	WATER MAIN	⊕	FIRE HYDRANT
⊕	WATER SVC. TO LOT WITH METER		
⊕	SANITARY SVC. TO LOT WITH CLEANOUT		
C.O.			



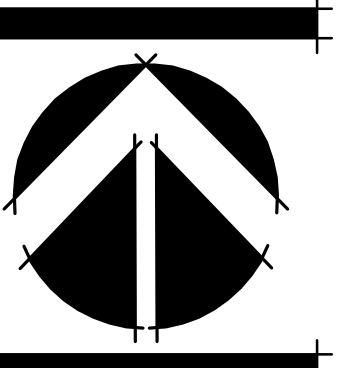
P&LUSD #5268G

P&L PROJECT NO. P23-190

**RIVERLAND - PARCEL 'D' - PLAT 7**  
Developer: Riverland Associates III, LLLP  
PORT ST. LUCIE, FLORIDA  
PLANTING PLAN

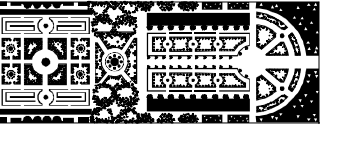
DATE: 10/18/23  
DRAWN BY: ALDITY  
JOB NO.: 23-067  
SCALE: 1" = 40'-0"  
FILENAME: RLD STP

**REVISIONS:**  
1/22/24 City cmnts  
2/27/24 City cmnts  
5/28/24 City cmnts  
7/24/24 City cmnts  
9/12/24 Utility updates  
9/23/24 Utility updates



SHEET:  
**P7-5**

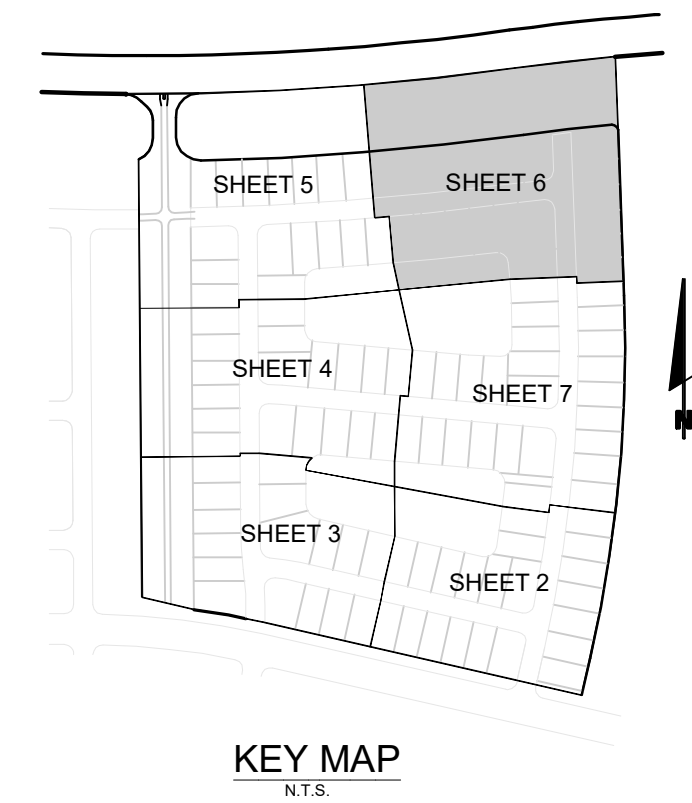




**PARKER-YANNETTE**  
design group, inc.

LANDSCAPE ARCHITECTURE  
PLANNING • GRAPHICS  
4425 Military Trail  
Suite 202  
Jupiter, Florida 33458

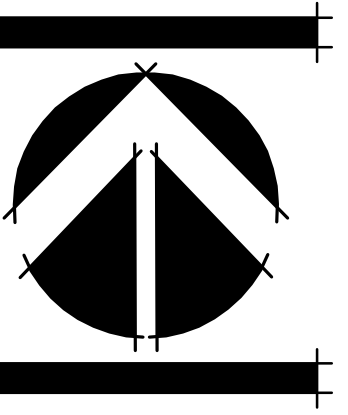
Telephone: (561) 747-5069  
Fax: (561) 747-2041  
Email: mail@pydg.com  
License #LA0001347



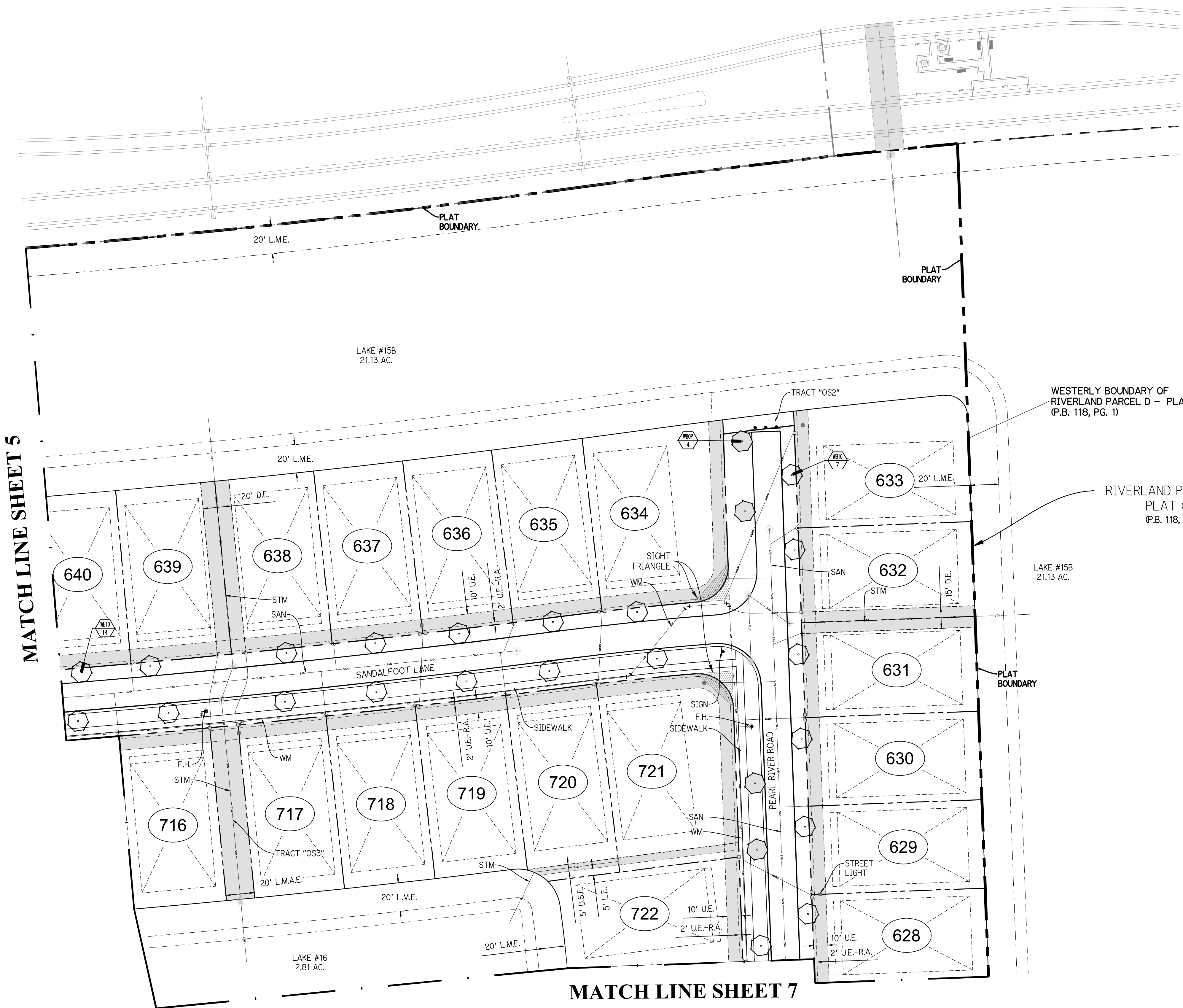
**RIVERLAND - PARCEL 'D' - PLAT 1**  
Developer: Riverland Associates III, LLLP  
PORT ST. LUCIE, FLORIDA  
PLANTING PLAN

DATE: 10/23  
DRAWN BY: AJLOTY  
JOB NO.: 23-067  
SCALE: 1" = 40'-0"  
FILENAME: RLD STP

REVISIONS:  
1/22/24 City cmnts  
2/27/24 City cmnts  
5/28/24 City cmnts  
7/24/24 City cmnts  
9/10/24 Utility updates  
9/23/24 Utility updates



SHEET:  
**P7-6**



**Plant List** (Sheet P7-6 Only)

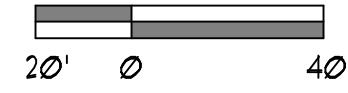
SYM	CITY	NAME	SPECIFICATIONS
WBLD	21	Wodystia bifurcata / Foxtail Palm	10' c.t., 4" min. cal. crown shaft, straight trunk, full head, unscarred trunk, intact fronds
WBCP	4	Optional Additional Street Tree - Wodystia bifurcata / Foxtail Palm	10' c.t., 4" min. cal. crown shaft, straight trunk, full head, unscarred trunk, intact fronds

NOTE:  
ALL PLANT MATERIAL SHALL MEET OR EXCEED SIZE AND CONTAINER SPECIFICATIONS IN PLANT LIST. PLANT MATERIALS NOT MEETING SPECIFICATIONS WILL BE REJECTED. CONTRACTOR TO COORDINATE AVAILABILITY ISSUES WITH OWNER PRIOR TO COMMENCING WORK.

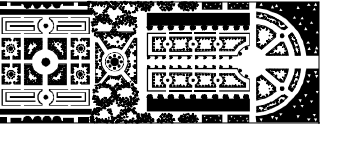
\* DENOTES NATIVE SPECIES

**Symbols Legend**

D.E.	GRASSY EASEMENT	O.E.	OVERHANG EASEMENT
L.M.E.	LAKE MAINTENANCE EASEMENT	G.E.	GRADING EASEMENT
L.M.A.E.	LAKE MAINTENANCE ACCESS EASEMENT	PSL	PORT ST LUCIE
R.O.W.	RIGHT OF WAY	L.E.	LANDSCAPE EASEMENT
U.E.	UTILITY EASEMENT	D.S.E.	DRAINAGE SWALE EASEMENT
U.E.-R.A.	UTILITY EASEMENT - RESTRICTED AREA (SEE U.E. PLAT DEDICATION)	O.S.	OPEN SPACE
STM	STORM SEWER LINE WITH MANHOLE	S&M	SEED & MULCH
SIM	STORM SEWER LINE WITH CATCH BASIN	SSN	SSN
SAN	SANITARY SEWER LINE WITH MANHOLE	1	LOT NUMBER
WM	WATER MAIN	⚡	FIRE HYDRANT
W	WATER SVC. TO LOT WITH METER		
WS	SANITARY SVC. TO LOT WITH CLEANOUT		
C.O.			



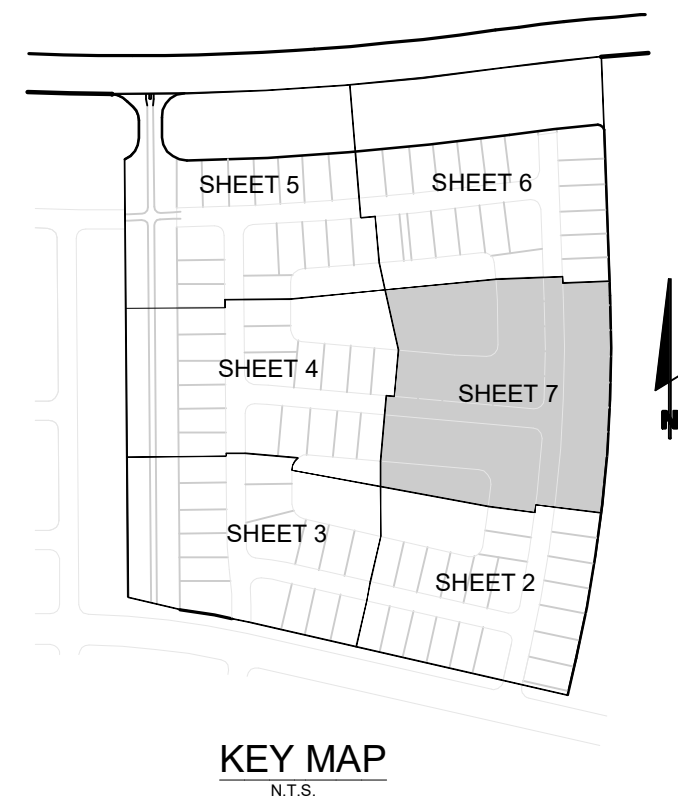
P&LUSD #5268G P&L PROJECT NO. P23-190



**PARKER-YANNETTE**  
design group, inc.

LANDSCAPE ARCHITECTURE  
PLANNING • GRAPHICS  
4425 Military Trail  
Suite 202  
Jupiter, Florida 33458

Telephone: (561) 747-5069  
Fax: (561) 747-2041  
Email: mail@pydg.com  
License #LA0001347



### MATCH LINE SHEET 6



RIVERLAND PARCEL D -  
PLAT ONE  
(P.B. 118, PG. 1)

RIVERLAND PARCEL D -  
PLAT ONE  
(P.B. 118, PG. 1)

MATCH LINE SHEET 4

MATCH LINE SHEET 2

# RIVERLAND - PARCEL 'D' - PLAT 1

Developer: Riverland Associates III, LLLP  
PORT ST. LUCIE, FLORIDA  
PLANTING PLAN

DATE: 10/18/23  
DRAWN BY: AJLOITY  
JOB NO.: 23-067  
SCALE: 1" = 40'-0"  
FILENAME: RLD STP

REVISIONS:  
1/22/24 City cmnts  
2/27/24 City cmnts  
5/28/24 City cmnts  
7/24/24 City cmnts  
9/12/24 Utility updates  
9/23/24 Utility updates

#### Plant List (Sheet P7-7 Only)

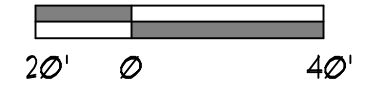
SYM.	QTY.	NAME	SPECIFICATIONS
PAL-16			
WB10	25	Wodyetia bifurcata / Foxtail Palm	10' c.t., 4" min. cal. crown shaft, straight trunk, full head, unscarred trunk, intact fronds
WBOP	4	Optional Additional Forest Trees - Wodyetia bifurcata / Foxtail Palm	10' c.t., 4" min. cal. crown shaft, straight trunk, full head, unscarred trunk, intact fronds

NOTE:  
ALL PLANT MATERIAL SHALL MEET OR EXCEED SIZE AND CONTAINER SPECIFICATIONS IN PLANT LIST. PLANT MATERIAL NOT MEETING SPECIFICATIONS WILL BE REJECTED. CONTRACTOR TO COORDINATE AVAILABILITY ISSUES WITH OWNER PRIOR TO COMMENCING WORK.

\* DENOTES NATIVE SPECIES

#### Symbols Legend

D.E.	DRAINAGE EASEMENT	O.E.	OVERHANG EASEMENT
L.M.E.	LAKE MAINTENANCE EASEMENT	G.E.	GRADING EASEMENT
L.M.A.E.	LAKE MAINTENANCE ACCESS EASEMENT	PSL	PORT ST LUCIE
R.O.W.	RIGHT OF WAY	L.E.	LANDSCAPE EASEMENT
U.E.	UTILITY EASEMENT	D.S.E.	DRAINAGE SWALE EASEMENT
U.E.-R.A.	UTILITY EASEMENT - RESTRICTED AREA (SEE "U.E." PLAT INDICATION)	O.S.	OPEN SPACE
STM	STORM SEWER LINE WITH MANHOLE	S&M	SEED & MULCH
STM	STORM SEWER LINE WITH CATCH BASIN	SSN	SSN
SAN	SANITARY SEWER LINE WITH MANHOLE	1	LOT NUMBER
WM	WATER MAIN	+	FIRE HYDRANT
W	WATER SVC. TO LOT WITH METER		
WS	SANITARY SVC. TO LOT WITH CLEANOUT		
C.O.			



PSLUSD #5268G

PSL PROJECT NO. P23-190

SHEET:

P7-7