

Plant Specifications

SPECIES AND SIZE shall conform to those indicated on the drawings. Nomenclature shall conform to STANDARDIZED PLANT NAMES, current edition. All nursery stock shall be in accordance with Florida Grades and Standards for Nursery Plants, latest edition published by the Florida Department of Agriculture and Consumer Services. All plants not otherwise specified as being Florida Fancy or Specimen shall be Florida Grade Number 1 or better as determined by the Florida Division of Plant Industry. Specimen means an exceptionally heavy, symmetrical, lightly knitted plant, so trained or favored in its development that first appearance is unquestionable and outstandingly superior in form, number of branches, compactness and symmetry.

GENERAL REQUIREMENTS

All plants shall be freshly dug, sound, healthy, vigorous, well branched, and free of disease and insect eggs and larvae, and shall have adequate root systems. Trees for planting rows shall be uniform in size and shape. All materials shall be subject to approval by the Landscape Architect. Where any requirements are omitted from the plant list, the plants furnished shall be normal for the variety. Plants shall be pruned prior to delivery only upon the approval of the Landscape Architect.

CONTAINER GROWN STOCK

All container grown material shall be healthy, vigorous, well rooted plants, and established in the container in which they are sold. The plants shall have tops which are good quality and in a healthy growing condition. An established container grown plant shall be grown in that container sufficiently long enough for the new fibrous roots to have developed so that the root mass will retain its shape and hold together when removed from the container. Plant root bound in containers are unacceptable.

MEASUREMENTS

**Trees:** Height shall be measured from ground to the top most portion of the tree. Small, multi-trunked trees are measured to the top of main body of the crown. Spread shall be measured to the end of branching equally around the crown from the center of the trunk. Measurements are not to include any terminal growth. Single trunk trees shall be free of "V" crotches that could be points of weak limb structure or disease infestation.

**Shrubs:** Heights shall be measured from the ground to the average points where mature plant growth stops. Spread shall be measured to the end of branching equally around the shrub mass. Measurements are not to include any terminal growth.

**Palms:** Clear Trunk (C.T.) shall be measured from the ground at the time of installation to the point where the mature aged trunk joins the immature or green portion of the trunk or the head.

Overall height (O.H.) shall be measured from the ground at the time of installation to a point three quarters the length of the unopened bud. Palms with marred or bumed trunks will not be accepted.

SOIL

Planting soil for use in preparing backfill for plant pits shall be free from heavy clay, stones, lime, plants, roots or other foreign materials or noxious grasses (such as Bermuda or nut grass) and noxious weeds. It shall not contain toxic substances which may be harmful to plant growth.

COMMERCIAL FERTILIZER

Two fertilizer shall be used in all types of plantings, except palms. Granular fertilizer shall be uniform in composition, dry and free flowing. This fertilizer shall be delivered to the site in the original unopened bags, each bearing the manufacturer's statement of analysis, and shall meet the following requirements: twelve (12%) percent nitrogen, seven (7%) percent phosphorus, five (5%) percent potassium, plus iron. Tablet fertilizer ("Agriform" or equal) in 21 gram size shall meet the following requirements: twenty (20%) percent nitrogen, ten (10%) percent phosphorus, five (5%) percent potassium.

The two fertilizers will be applied at the following rates:

PLANT SIZE	16-7-12	"AGRIFORM" TABLET (21 grams)
1 gal.	1/4 lb.	1
3 gal.	1/3 lb.	2
7-15 gal.	1/2 lb.	4
1"-6" caliper	2 lbs/1" caliper	2/1" caliper
6" and larger	3 lbs/1" caliper	2/1" caliper

"Florida East Coast Palm Special" will be applied to all palms at installation at a rate of 1/2 lb. per inch of trunk caliper unless otherwise specified.

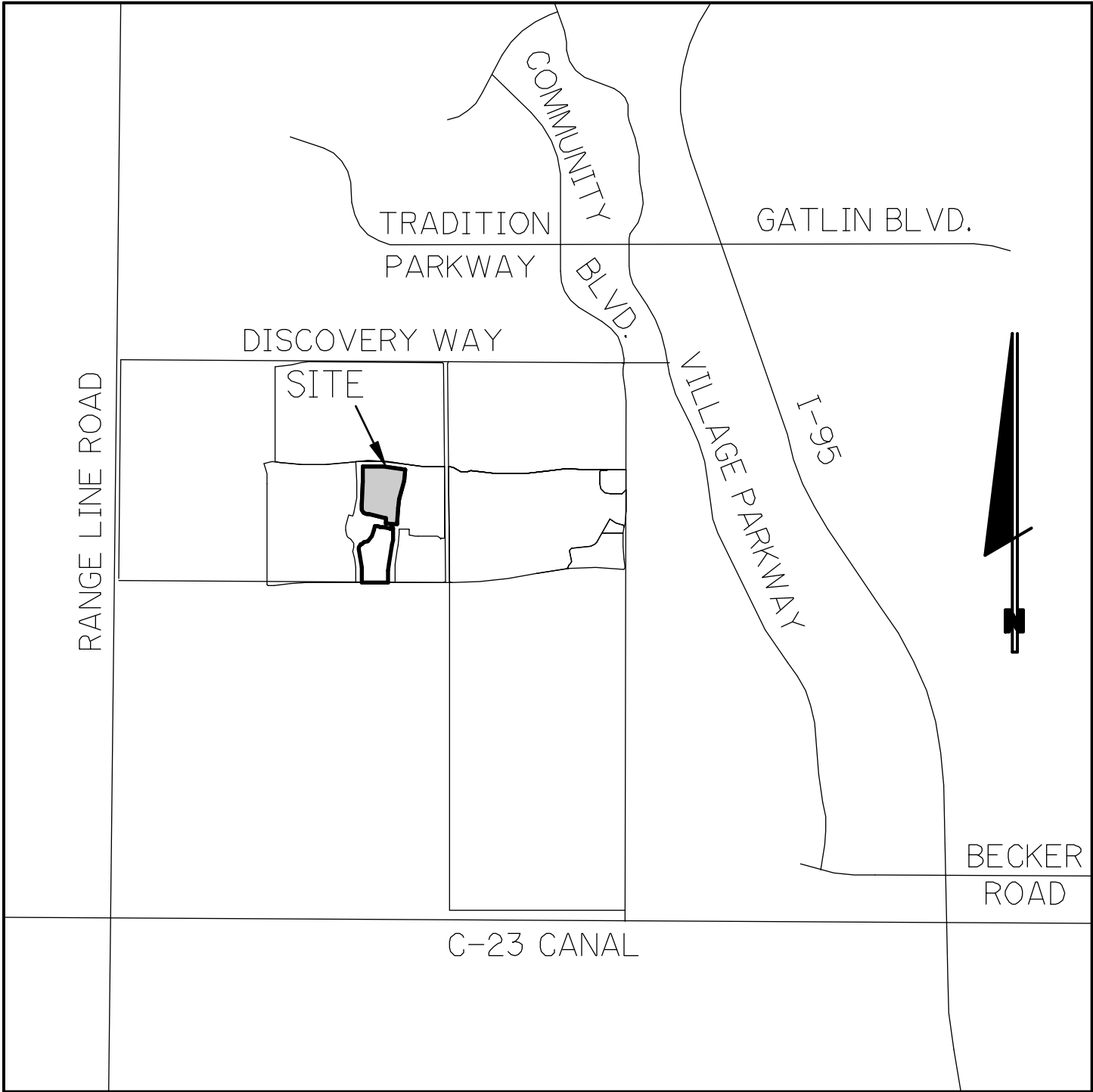
MULCH

Mulch material shall be two (2) inches of shredded Class "A" mulch (sterilized and free of seeds), maintained at the time of application to prevent wind displacement. See plant list for specification.

SUBSTITUTIONS

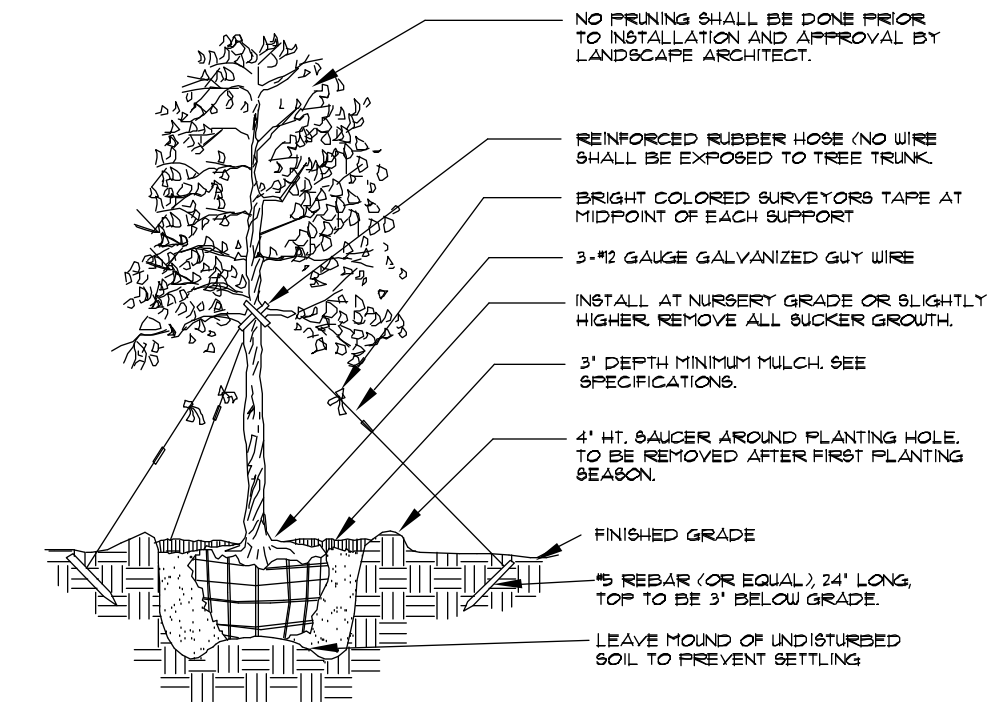
No substitutions of plant material types or size will be allowed without written consent of the Landscape Architect. B&B material will not be accepted as substitute for container grown material unless previously approved. Alternate substitutions shall be indicated in bid.

RIVERLAND - PARCEL 'D'  
(RIVERLAND MPUD)  
PLANTING PLANS  
PLAT THREE



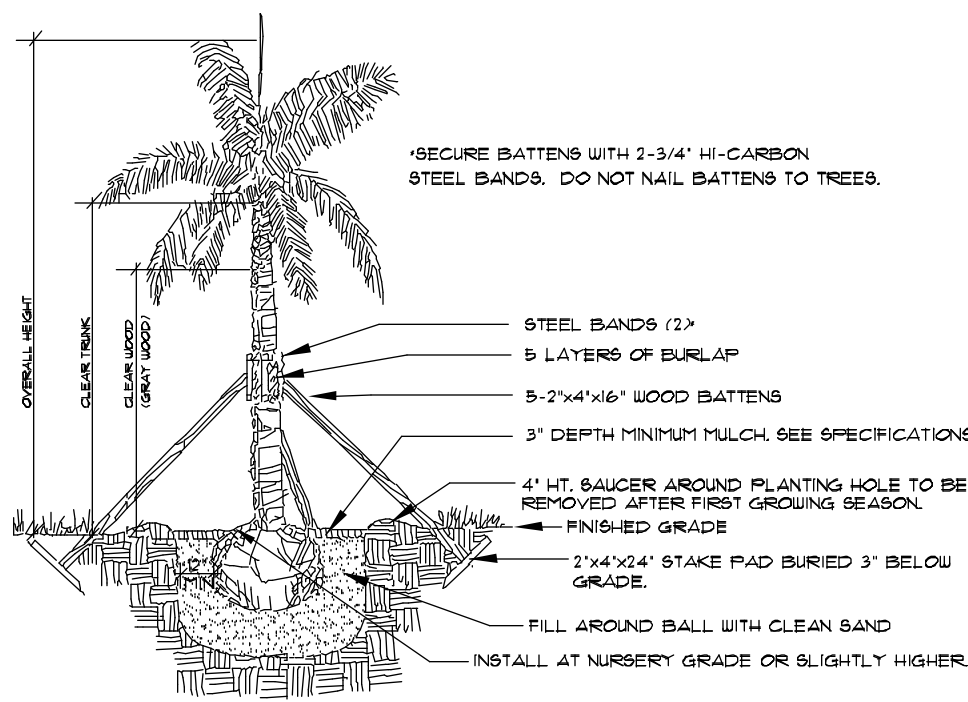
LOCATION MAP

N.T.S.  
SEC. 21 TWP. 37S RGE. 39E



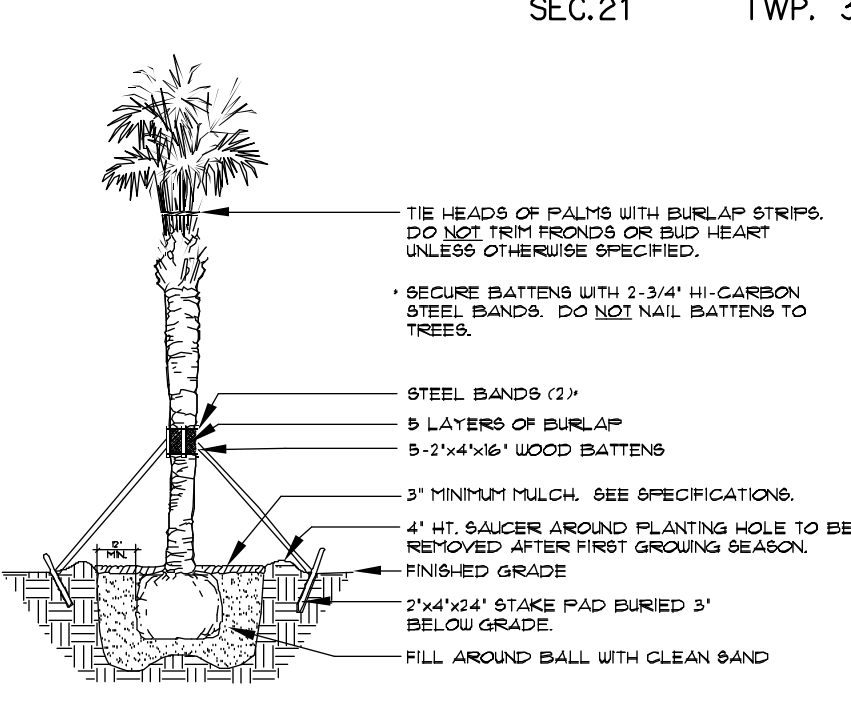
Tree Planting

- SEE SPECIFICATIONS FOR BACKFILL MIXTURE AND FERTILIZATION.
- BRACING - SPECIAL SITE CONDITIONS MAY REQUIRE MODIFICATION TO BRACING TECHNIQUE. LANDSCAPE CONTRACTOR WILL ADEQUATELY BRACE (OR WIRE) ALL TREES TO PREVENT EXCESSIVE MOVEMENT AND MAINTAIN A VERTICAL POSITION.



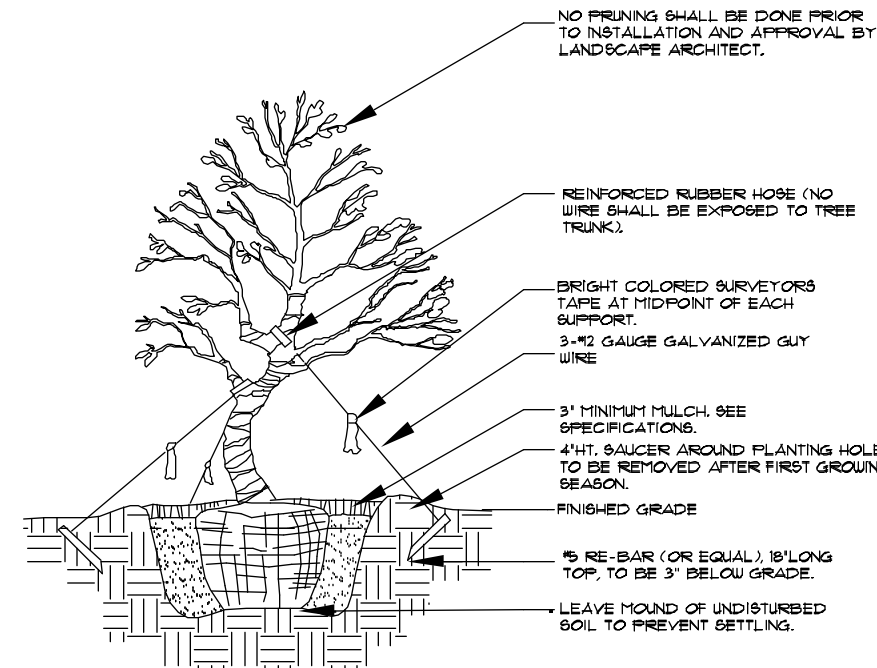
Palm Planting

- APPLIES TO: ROYAL PALMS, QUEEN PALMS, ALEXANDER PALMS, FOXTAIL PALMS, SENEGAL DATE PALMS.
- SEE SPECIFICATIONS FOR BACKFILL MIXTURE AND FERTILIZATION.
- BRACING - SPECIAL SITE CONDITIONS MAY REQUIRE MODIFICATION TO BRACING TECHNIQUE. LANDSCAPE CONTRACTOR WILL ADEQUATELY BRACE (OR WIRE) ALL TREES TO PREVENT EXCESSIVE MOVEMENT AND MAINTAIN A VERTICAL POSITION.



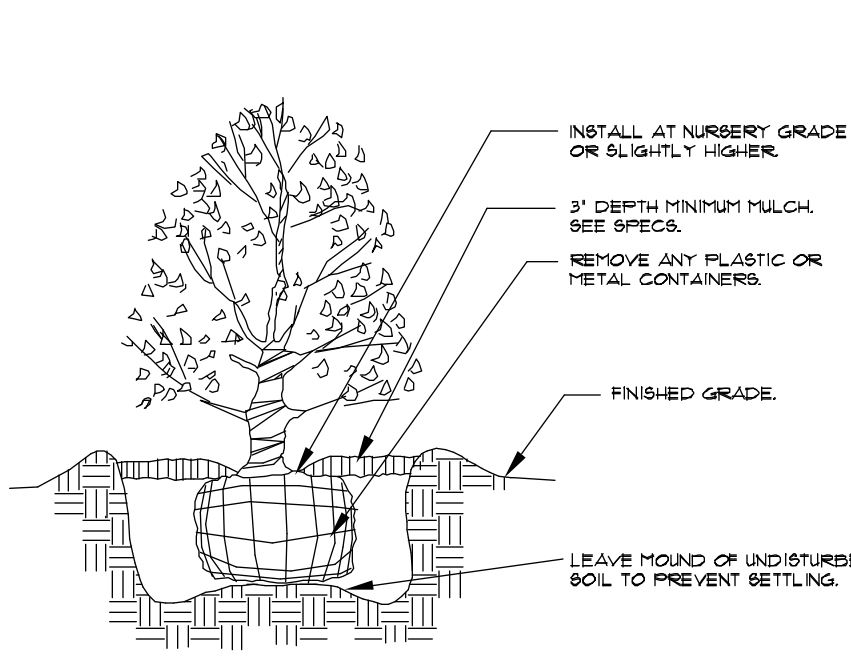
Palm Planting

- APPLIES TO: BABAL PALMS, WASHINGTON PALMS, CANARY ISLAND DATE PALMS, SENEGAL DATE PALMS.
- SEE SPECIFICATIONS FOR BACKFILL MIXTURE AND FERTILIZATION.



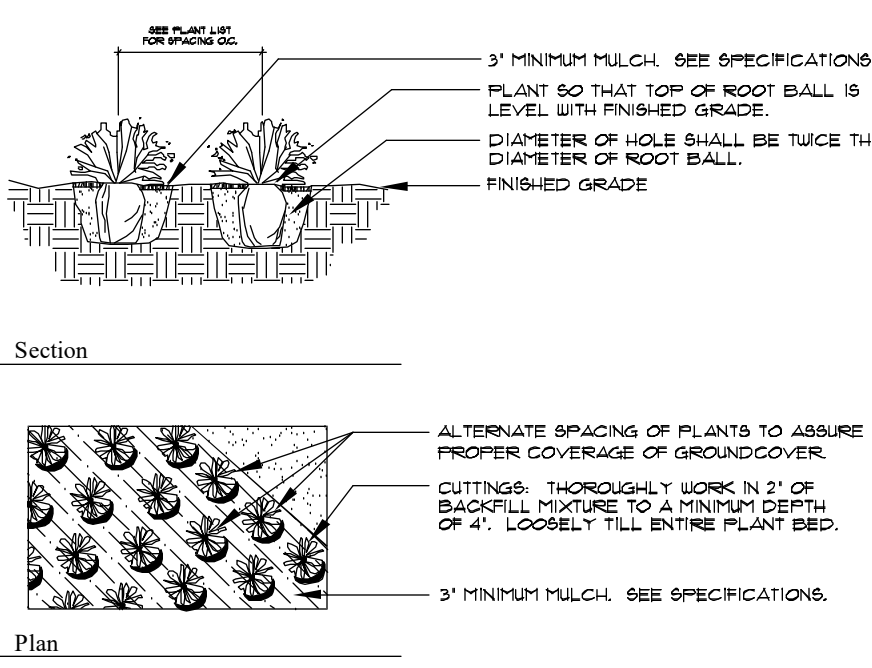
Irregular & Multi-Stem Tree Planting

- FOR TREES 6'-14' HT.
- NOTES: SEE SPECIFICATIONS FOR BACKFILL MIXTURE AND FERTILIZATION. BRACING - SPECIAL SITE CONDITIONS MAY REQUIRE MODIFICATION TO BRACING TECHNIQUE. LANDSCAPE CONTRACTOR WILL ADEQUATELY BRACE (OR WIRE) ALL TREES TO PREVENT EXCESSIVE MOVEMENT AND MAINTAIN A VERTICAL POSITION.



Shrub Planting

- SEE SPECIFICATIONS FOR BACKFILL MIXTURE AND FERTILIZATION.



Groundcover Planting

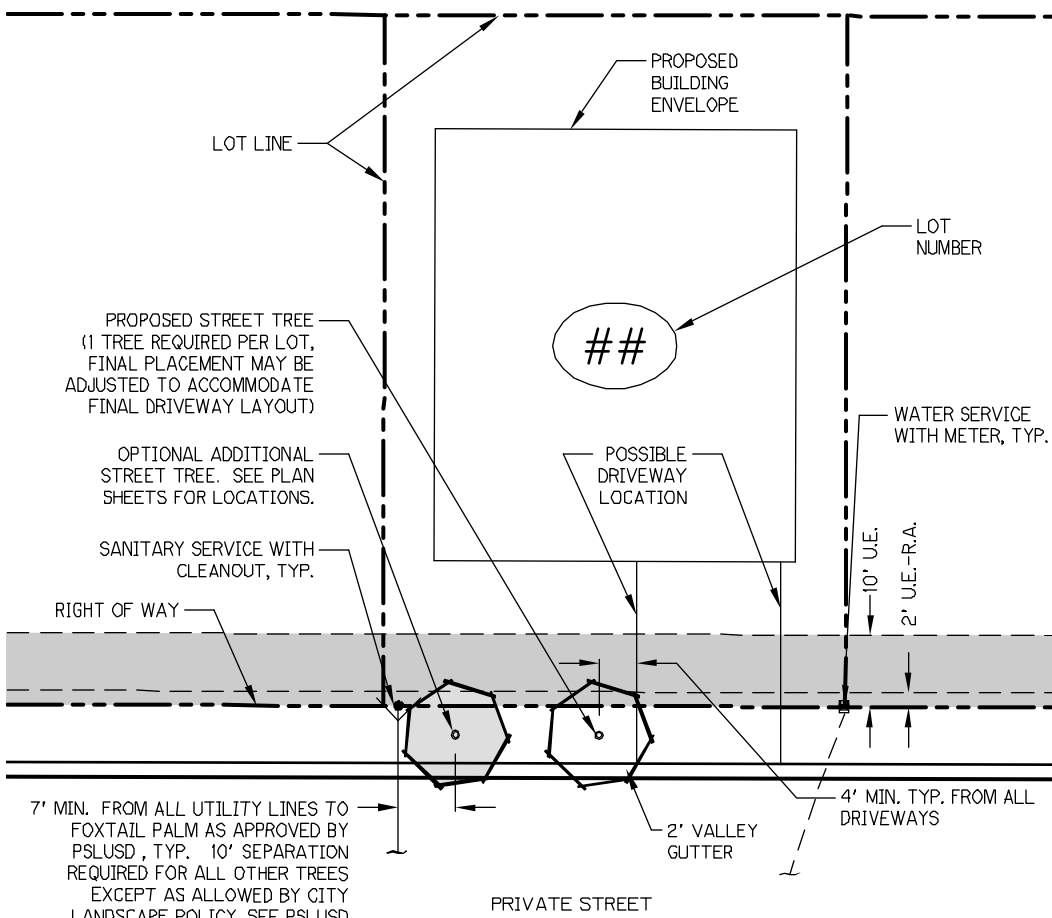
- SEE SPECIFICATIONS FOR BACKFILL MIXTURE AND FERTILIZATION.

Sheet Index

P3-1 - Cover Sheet, Index, General Notes  
P3-2 thru P3-7 Plat Three Planting Plans

Symbols Legend

D.E.	DRAINAGE EASEMENT	O.E.	OVERHANG EASEMENT
L.M.E.	LAKE MAINTENANCE EASEMENT	G.E.	GRADING EASEMENT
L.M.A.E.	LAKE MAINTENANCE ACCESS EASEMENT	PSL	PORT ST LUCIE
R.O.W.	RIGHT OF WAY	L.E.	LANDSCAPE EASEMENT
U.E.	UTILITY EASEMENT	D.S.E.	DRAINAGE SWALE EASEMENT
U.E.-R.A.	UTILITY EASEMENT - RESTRICTED AREA (SEE "U.E." PLAT DEDICATION)	O.S.	OPEN SPACE
STIM	STORM SEWER LINE WITH MAN-HOLE	S&M	SEED & MULCH
STIM	STORM SEWER LINE WITH CATCH BASIN	1	LOT NUMBER
SAN	SANITARY SEWER LINE WITH MAN-HOLE	1	LOT NUMBER
WM	WATER MAIN	1	LOT NUMBER
1	WATER SVC. TO LOT WITH METER W.M.	1	FIRE HYDRANT
1	SANITARY SVC. TO LOT WITH CLEANOUT C.O.		



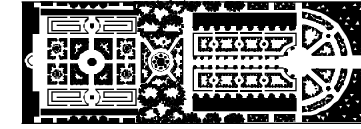
Typical Lot Layout Detail

N.T.S.

PSLUD Notes:

LANDSCAPE PLANS SHALL BE SUBMITTED FOR THE PROJECT INDICATING THE LOCATION OF LANDSCAPE AREAS, PERIMETER WALLS, FOUNDATIONS, BERRIS, TREE WELLS, FENCES, GATES, SIGNS, DECORATIVE ROCKS, SCULPTURE, FOUNTAINS, AND ANY OTHER FEATURES THAT MAY INFLUENCE THE LOCATION OF WATER / WASTEWATER / RECLAIMED WATER FACILITIES. ALSO, EXISTING AND PROPOSED WATER / WASTEWATER / RECLAIMED FACILITIES, AND RIGHT-OF-WAY, LOT LINES AND EASEMENTS, THE PLANS SHALL INCLUDE AND CONFORM TO THE FOLLOWING STANDARD NOTES:

- NO LANDSCAPING SHALL BE PLANTED IN A MANNER THAT WOULD ADVERSELY AFFECT UTILITY EASEMENTS, LANDSCAPING SHALL BE IN COMPLIANCE WITH CHAPTER 84 OF THE CITY OF PORT ST. LUCIE CODE OF ORDINANCES, PSLUD TECHNICAL SPECIFICATIONS AND POLICIES.
  - ALL LANDSCAPING WITHIN CITY UTILITY EASEMENTS SHALL COMPLY WITH CHAPTER 84 OF THE CITY'S CODE OF ORDINANCES AND PSLUD TECHNICAL SPECIFICATIONS, POLICIES, AND CODES.
  - ALL LANDSCAPING SHALL MEET THE LATEST PSLUD LANDSCAPE POLICY AND SHALL NOT BE PLACED IN A MANNER THAT WOULD CREATE CONFLICTS WITH THE INTENDED OPERATION AND MAINTENANCE OF ANY EXISTING UTILITY.
  - WITH THE EXCEPTION OF FOXTAIL PALMS, TREES SHALL NOT BE PLANTED WITHIN 10' OF ANY PSLUD INFRASTRUCTURE. AS SPECIFICALLY APPROVED BY THE PSLUD, FOXTAIL PALMS MAY BE A DISTANCE NOT LESS THAN SEVEN (7) FEET OF ANY PSLUD INFRASTRUCTURE. ALL HEADSPRINGS ARE FROM OUTSIDE TO OUTSIDE, NOT CENTERLINE TO CENTERLINE. EXAMPLE: OUTSIDE OF PIPE TO NEAREST POINT ON TREE TRUNK.
  - NO LANDSCAPING OTHER THAN SOID GRASSES SHALL BE LOCATED WITHIN 5' OF A PSLUD APPURTENANCE SUCH AS A WATER METER ASSEMBLY, BACK-FLOW DEVICE, FIRE HYDRANT OR SEWER CLEANOUT, ETC.
- UTILITY 4 DRAINAGE EASEMENTS TO REMAIN CLEAR OF TREES UNLESS OTHERWISE APPROVED BY THE EASEMENT HOLDER.



PARKER-YANNETTE  
design group, inc.

LANDSCAPE ARCHITECTURE  
PLANNING • GRAPHICS  
825 South U.S. Highway One  
Suite 330  
Jupiter, Florida 33477

Telephone: (561) 747-5069  
Fax: (561) 747-2041  
Email: mail@pydg.com

License #LC-0000297

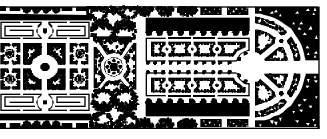
RIVERLAND - PARCEL 'D' - PLAT 3  
Developer: Riverland Associates III, LLLP  
PORT ST. LUCIE, FLORIDA  
COVER SHEET

DATE: 8/21/18  
DRAWN BY: AJO/TY  
JOB NO.: 18-055  
SCALE: N/A  
FILENAME: RivPaD.DWG

REVISIONS:  
12.3.21 PSL prints / rev util  
5.9.23

SHEET:

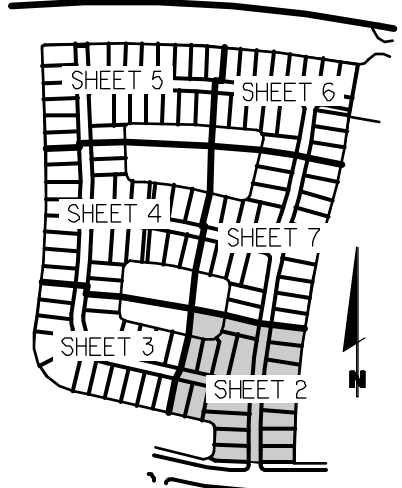
P3-1



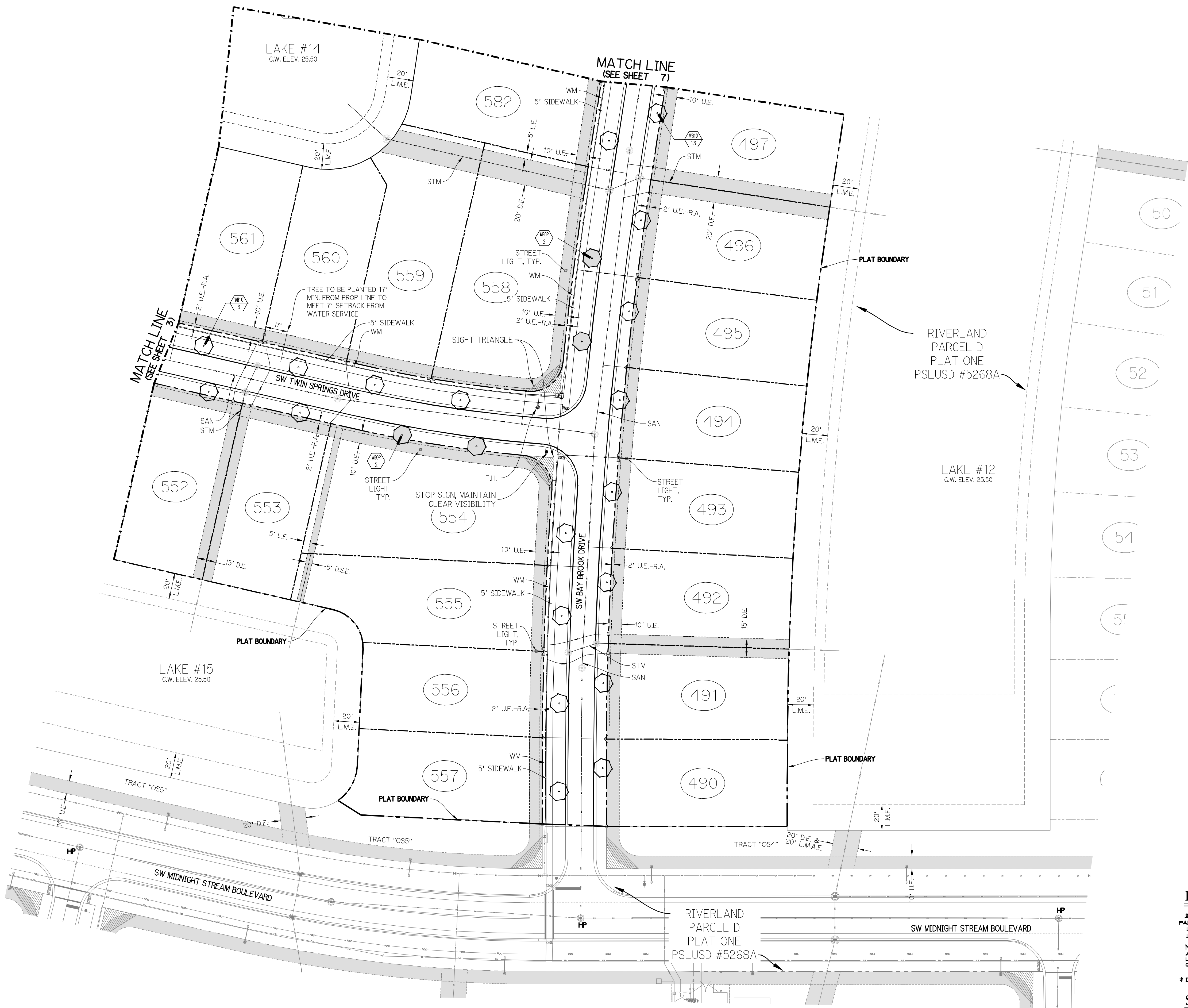
PARKER-YANNETTE  
design group, inc.

LANDSCAPE ARCHITECTURE  
PLANNING • GRAPHICS  
825 South U.S. Highway One  
Suite 330  
Jupiter, Florida 33477

Telephone: (561) 747-5069  
Fax: (561) 747-2041  
Email: mail@pydg.com  
License #LC-0000297



KEY MAP  
N.T.S.



Plant List (Sheet P3-2 Only)

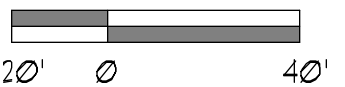
SYM	QTY	NAME	SPECIFICATIONS
WLB10	10	Wodyetia bifurcata / Foxtail Palm	10" cal., 4' min. cal. crown shaft, straight trunk, full head, unscarred trunk, intact fronds
WLB0P	4	Optional Additional Street Tree - Wodyetia bifurcata / Foxtail Palm	10" cal., 4' min. cal. crown shaft, straight trunk, full head, unscarred trunk, intact fronds

NOTE:  
ALL PLANT MATERIAL SHALL MEET OR EXCEED SIZE AND CONTAINER SPECIFICATIONS IN PLANT LIST. PLANT MATERIALS NOT MEETING SPECIFICATIONS WILL BE REJECTED. CONTRACTOR TO COORDINATE AVAILABILITY ISSUES WITH OWNER PRIOR TO COMMENCING WORK.

\* DENOTES NATIVE SPECIES

Symbols Legend

D.E.	DRAINAGE EASEMENT	O.E.	OVERHANG EASEMENT
L.M.E.	LAKE MAINTENANCE EASEMENT	G.E.	GRADING EASEMENT
L.M.A.E.	LAKE MAINTENANCE ACCESS EASEMENT	PSL	PORT ST LUCE
R.O.W.	RIGHT OF WAY	L.E.	LANDSCAPE EASEMENT
U.E.	UTILITY EASEMENT	D.S.E.	DRAINAGE SWALE EASEMENT
U.E.-R.A.	UTILITY EASEMENT - RESTRICTED AREA	O.S.	OPEN SPACE
SEE KEY-PLAT INDICATION		S&M	SEED & MULCH
STM	STORM SEWER LINE WITH MANHOLE	SM	SEED
STM	STORM SEWER LINE WITH CATCH BASIN	SN	SIGN
SAN	SANITARY SEWER LINE WITH MANHOLE	①	LOT NUMBER
WM	WATER MAIN	⚡	FIRE HYDRANT
W	WATER SVC. TO LOT WITH METER		
W&A	SANITARY SVC. TO LOT WITH CLEANOUT		
C.O.			

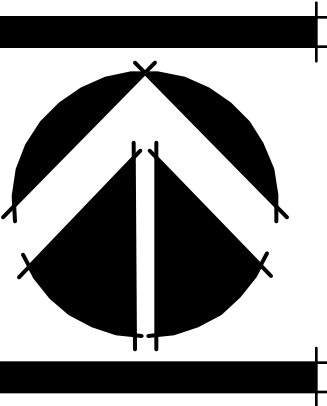


PSLUSD # 5268C PSL PROJECT NO. P22-289

RIVERLAND - PARCEL 'D' - PLAT 3  
Developer: Riverland Associates III, LLLP  
PORT ST. LUCIE, FLORIDA  
PLANTING PLAN

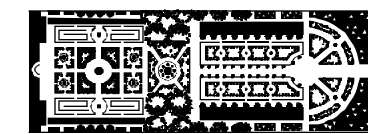
DATE: 8/21/18  
DRAWN BY: AJO/TY  
JOB NO.: 18-095  
SCALE: 1" = 40'-0"  
FILENAME: RivParD STP

REVISIONS:  
12.2.22 PSL prints / rev util  
5/8/23



SHEET:

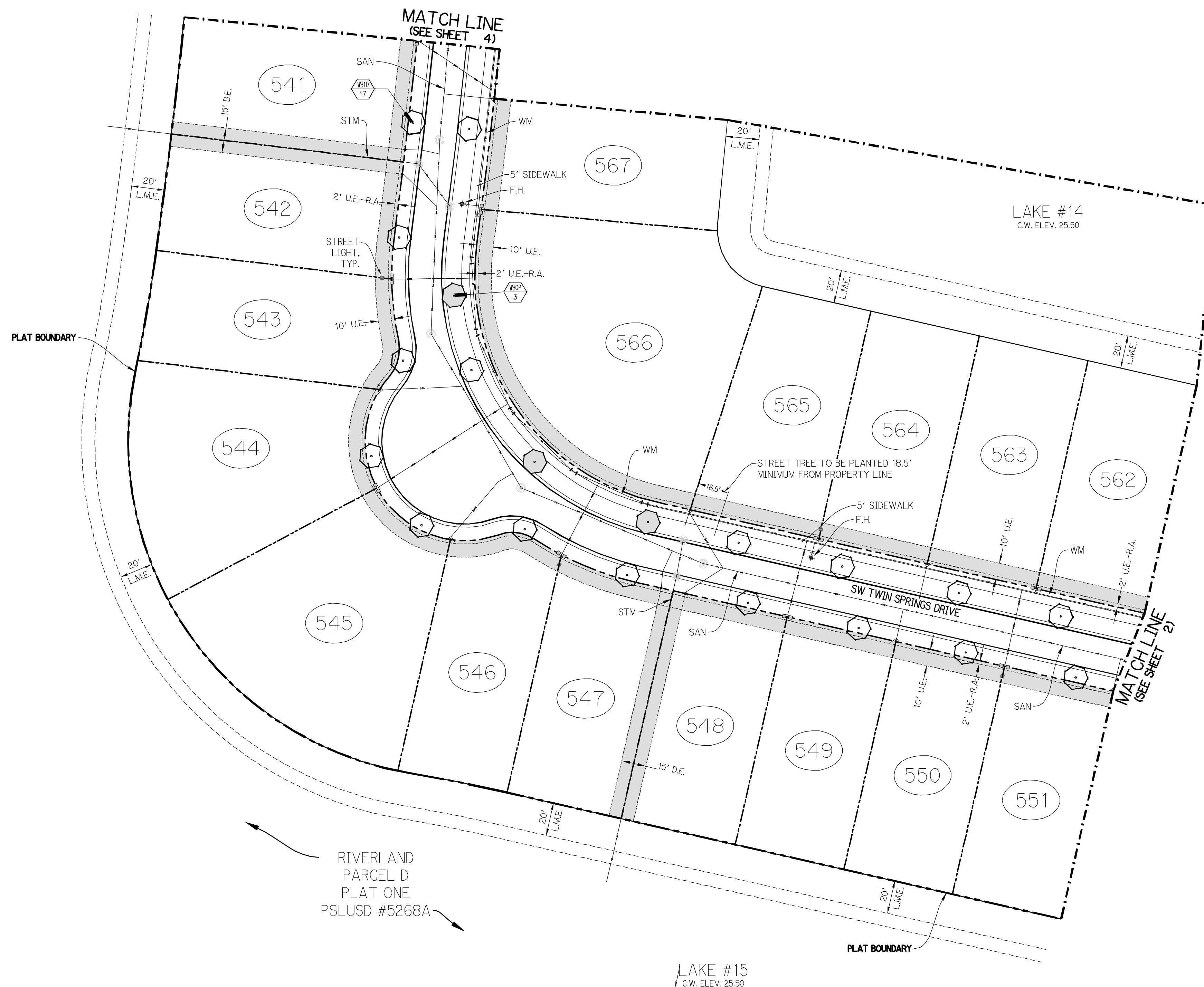
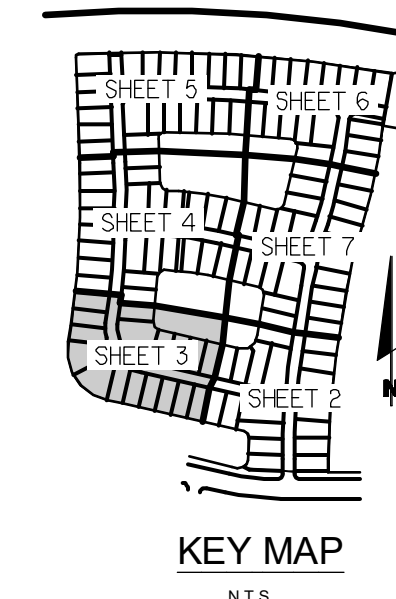
P3-2



PARKER-YANNETTE  
design group, inc.

LANDSCAPE ARCHITECTURE  
PLANNING • GRAPHICS  
825 South U.S. Highway One  
Suite 330  
Jupiter, Florida 33477

Telephone: (561) 747-5069  
Fax: (561) 747-2041  
Email: mail@pydg.com  
License #LC-0000297



### Plant List (Sheet P3-3 Only)

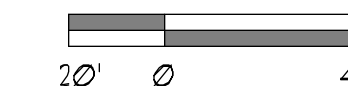
SYM.	QTY.	NAME	SPECIFICATIONS
<b>PALMS</b>			
LEB10	17	Wodyetia bifurcata / Foxtail Palm	10' c.l. 4" min. cal. crown shaft, straight trunk, full head, unscarred trunk, intact fronds
LEOP	2	Optional Additional Street Tree - Wodyetia bifurcata / Foxtail Palm	10' c.l. 4" min. cal. crown shaft, straight trunk, full head, unscarred trunk, intact fronds

NOTE:  
ALL PLANT MATERIAL SHALL MEET OR EXCEED SIZE AND CONTAINER SPECIFICATIONS IN PLANT LIST. PLANT MATERIALS NOT MEETING SPECIFICATIONS WILL BE REJECTED. CONTRACTOR TO COORDINATE AVAILABILITY ISSUES WITH OWNER PRIOR TO COMMENCING WORK.

DENOTES NATIVE SPECIES

### Symbols Legend

D.E.	DRAINAGE EASEMENT	O.E.	OVERHANG EASEMENT
L.M.E.	LAKE MAINTENANCE EASEMENT	G.E.	GRADING EASEMENT
L.M.A.E.	LAKE MAINTENANCE ACCESS EASEMENT	PSL	PORT ST LUCIE
R.O.W.	RIGHT OF WAY	L.E.	LANDSCAPE EASEMENT
U.E.	UTILITY EASEMENT	D.S.E.	DRAINAGE SWALE EASEMENT
U.E.-R.A.	UTILITY EASEMENT - RESTRICTED AREA (SEE "U.E.-R.A." FOR RESTRICTIONS)	O.S.	OPEN SPACE
STM	STORM SEWER LINE WITH MANHOLE	S&M	SEED & MULCH
SDM	STORM SEWER LINE WITH CATCH BASIN	SGN	SIGN
SAN	SANITARY SEWER LINE WITH MANHOLE	LOT	LOT NUMBER
WM	WATER MAIN	FH	FIRE HYDRANT
W	WATER SVC. TO LOT WITH METER		
W&W	SANITARY SVC. TO LOT WITH GLEANDOUT		
C.O.			



PSLUSD # 5268C PSL PROJECT NO. P22-289

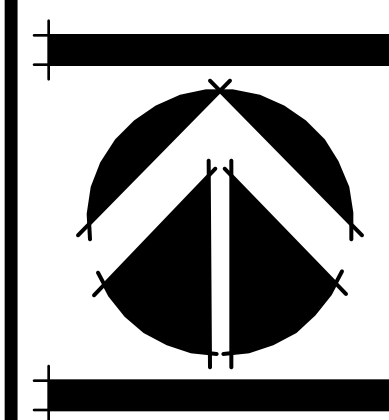
## RIVERLAND - PARCEL 'D' - PLAT 3

Developer: Riverland Associates III, LLLP  
PORT ST. LUCIE, FLORIDA

### PLANTING PLAN

DATE: 8/21/18  
DRAWN BY: AJO/TY  
JOB NO.: 18-055  
SCALE: 1" = 40'-0"  
FILENAME: RivParD STP

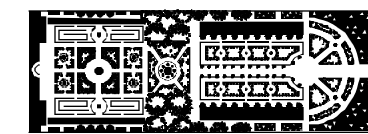
REVISIONS:  
12/2/22 PSL prints / rev util  
5/18/23



SHEET:

P3-3



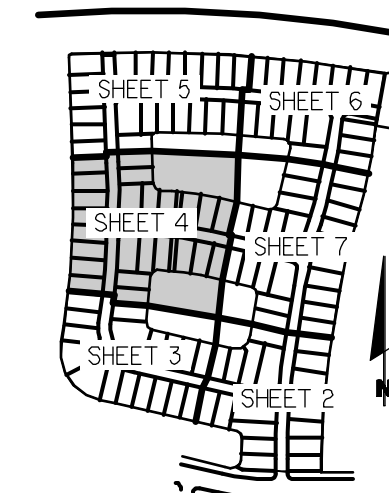


PARKER-YANNETTE  
design group, inc.

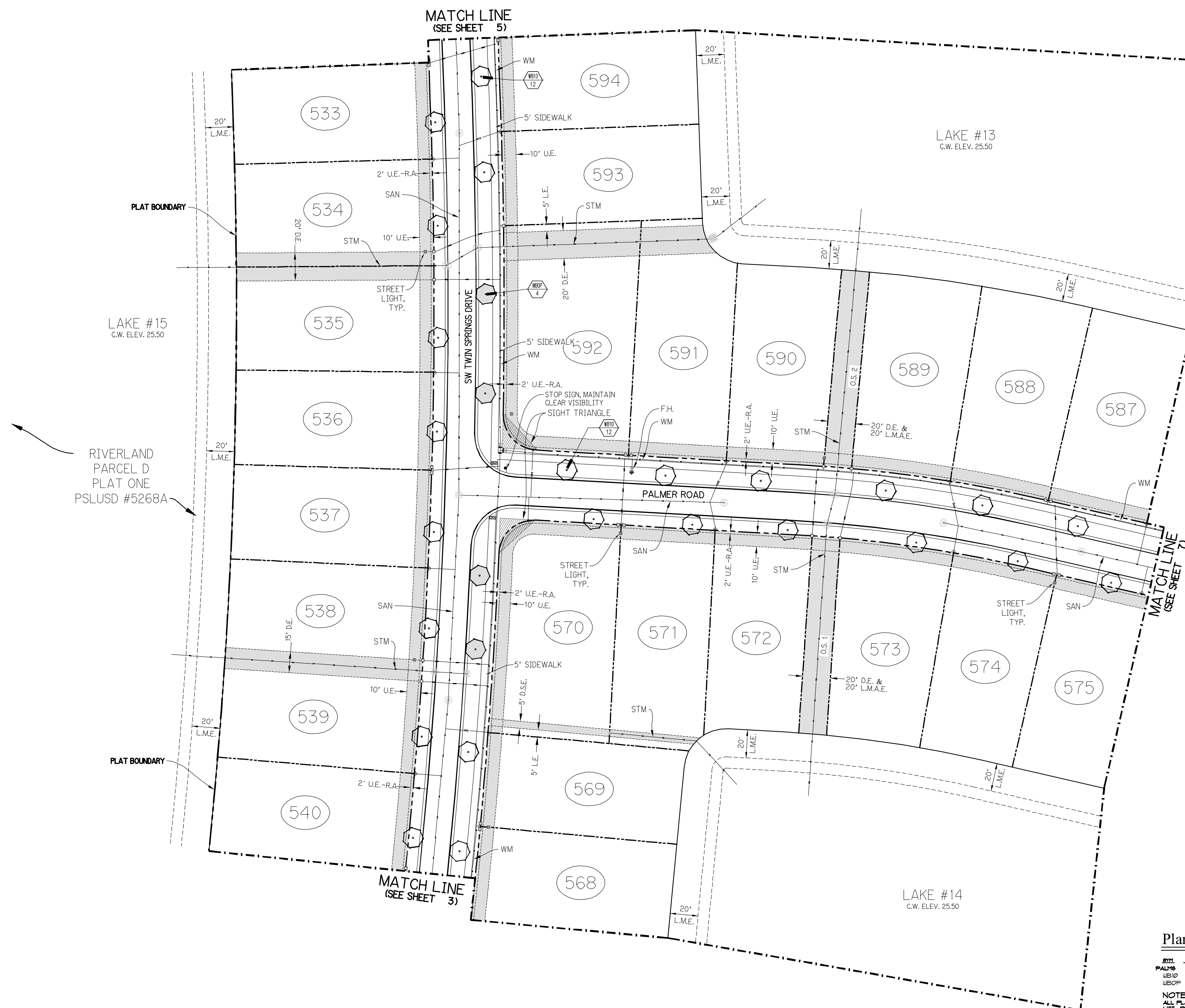
LANDSCAPE ARCHITECTURE  
PLANNING • GRAPHICS  
825 South U.S. Highway One  
Suite 330  
Jupiter, Florida 33477

Telephone: (561) 747-5069  
Fax: (561) 747-2041  
Email: mail@pydg.com

License #LC-0000297



KEY MAP  
N.T.S.



Plant List (Sheet P3-4 Only)

SYM	QTY	NAME	SPECIFICATIONS
WBP	24	Wodyetia bifurcata / Foxtail Palm	10' c.t., 4" min. cal. crown shft, straight trunk, full head, unscarred trunk, intact fronds
WBP	4	Optional Additional Street Tree - Wodyetia bifurcata / Foxtail Palm	10' c.t., 4" min. cal. crown shft, straight trunk, full head, unscarred trunk, intact fronds

NOTE:  
ALL PLANT MATERIAL SHALL MEET OR EXCEED SIZE AND CONTAINER SPECIFICATIONS IN PLANT LIST. PLANT MATERIALS NOT MEETING SPECIFICATIONS WILL BE REJECTED. CONTRACTOR TO COORDINATE AVAILABILITY ISSUES WITH OTHER PRIOR TO COMMENCING WORK.

\* DENOTES NATIVE SPECIES

### Symbols Legend

D.E.	DRAINAGE EASEMENT	O.E.	OVERHANG EASEMENT
L.M.E.	LAKE MAINTENANCE EASEMENT	G.E.	GRAZING EASEMENT
L.M.A.E.	LAKE MAINTENANCE ACCESS EASEMENT	P.S.L.	PORT ST. LUGGE
R.O.W.	RIGHT OF WAY	L.E.	LANDSCAPE EASEMENT
U.E.	UTILITY EASEMENT	D.S.E.	DRAINAGE SWALE EASEMENT
U.E.-R.A.	UTILITY EASEMENT - RESTRICTED AREA	O.S.	OPEN SPACE
STM	STORM SEWER LINE WITH MANHOLE	SAM	SEED IN MOUND
STM	STORM SEWER LINE WITH CATCH BASIN	SN	SIGN
SAN	SANITARY SEWER LINE WITH MANHOLE	1	LOT NUMBER
WM	WATER MAIN	+	FIRE HYDRANT
W.S.V.	WATER SVC. TO LOT WITH METER		
S.S.V.	SANITARY SVC. TO LOT WITH CLEANOUT		



PSLUSD # 5268C PSL PROJECT NO. P22-289

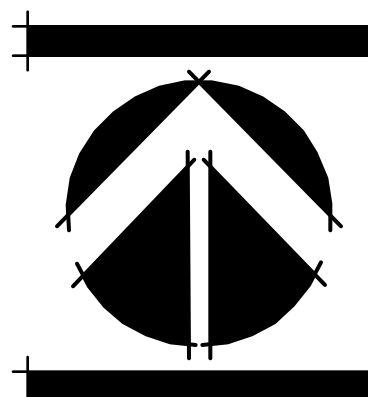
# RIVERLAND - PARCEL 'D' - PLAT 3

Developer: Riverland Associates III, LLLP  
PORT ST. LUCIE, FLORIDA

## PLANTING PLAN

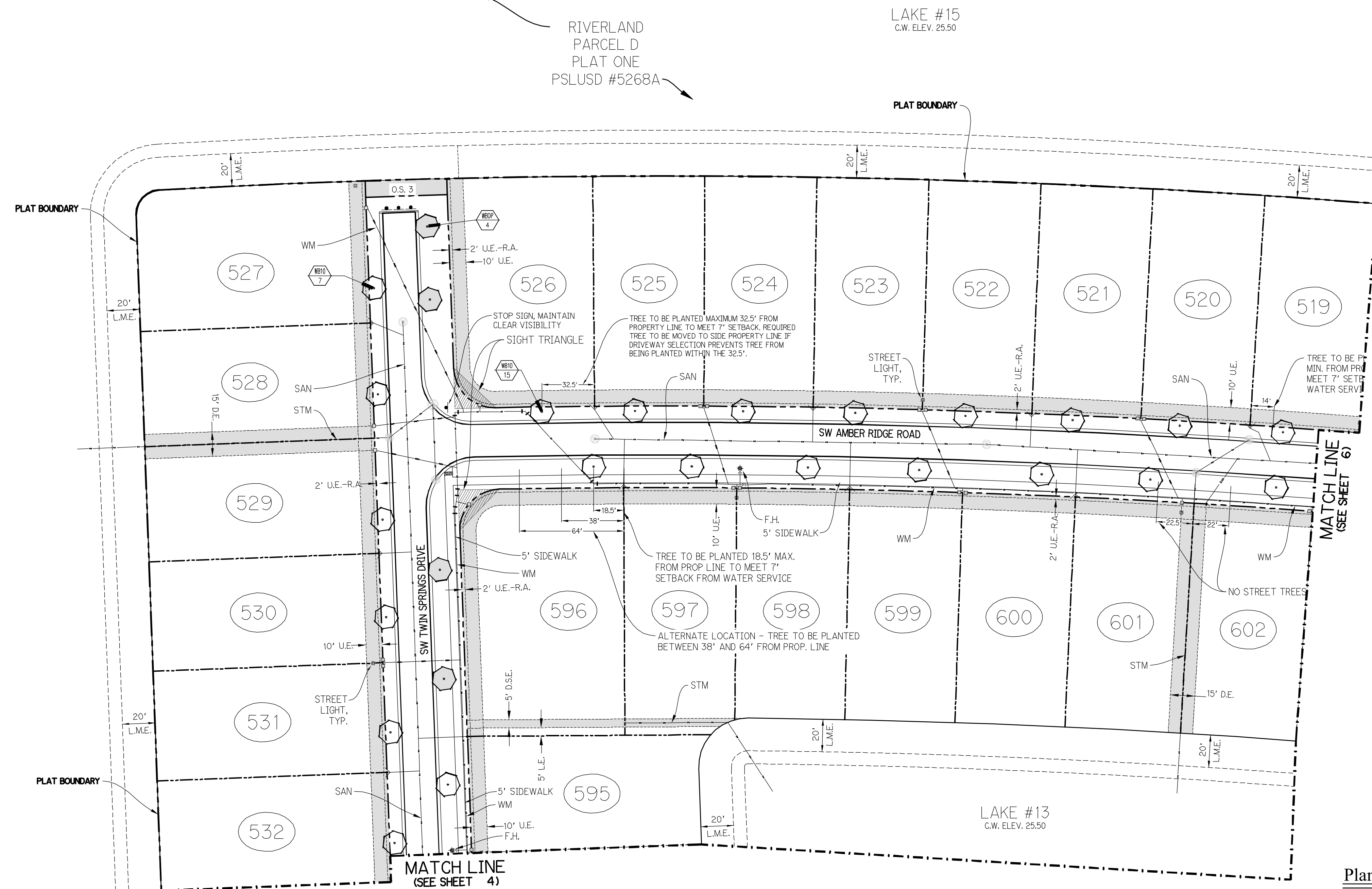
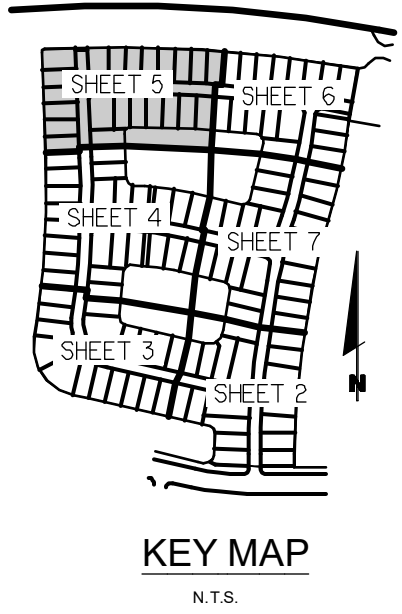
DATE: 8/21/18  
DRAWN BY: AJO/TY  
JOB NO.: 18-095  
SCALE: 1" = 40'-0"  
FILENAME: RivParD STP

REVISIONS:  
12/2/21 PSL prints / rev util  
5/8/23



SHEET:

P3-4

Plant List (Sheet P3-5 Only)

QTY	QTY	NAME	SPECIFICATIONS
PALMS			
WB10	22	Wodyetia bifurcata / Foxtail Palm	10' c.l. 4" min. cal. crown shaft, straight trunk, full head, unscarred trunk, intact fronds
WB0P	4	Optional Additional Street Tree - Wodyetia bifurcata / Foxtail Palm	10' c.l. 4" min. cal. crown shaft, straight trunk, full head, unscarred trunk, intact fronds

**NOTE:**  
ALL PLANT MATERIAL SHALL MEET OR EXCEED SIZE AND CONTAINER SPECIFICATIONS IN PLANT LIST. PLANT MATERIALS NOT MEETING SPECIFICATIONS WILL BE REJECTED. CONTRACTOR TO COORDINATE AVAILABILITY ISSUES WITH OWNER PRIOR TO COMMENCING WORK.

\* DENOTES NATIVE SPECIES

### Symbols Legend

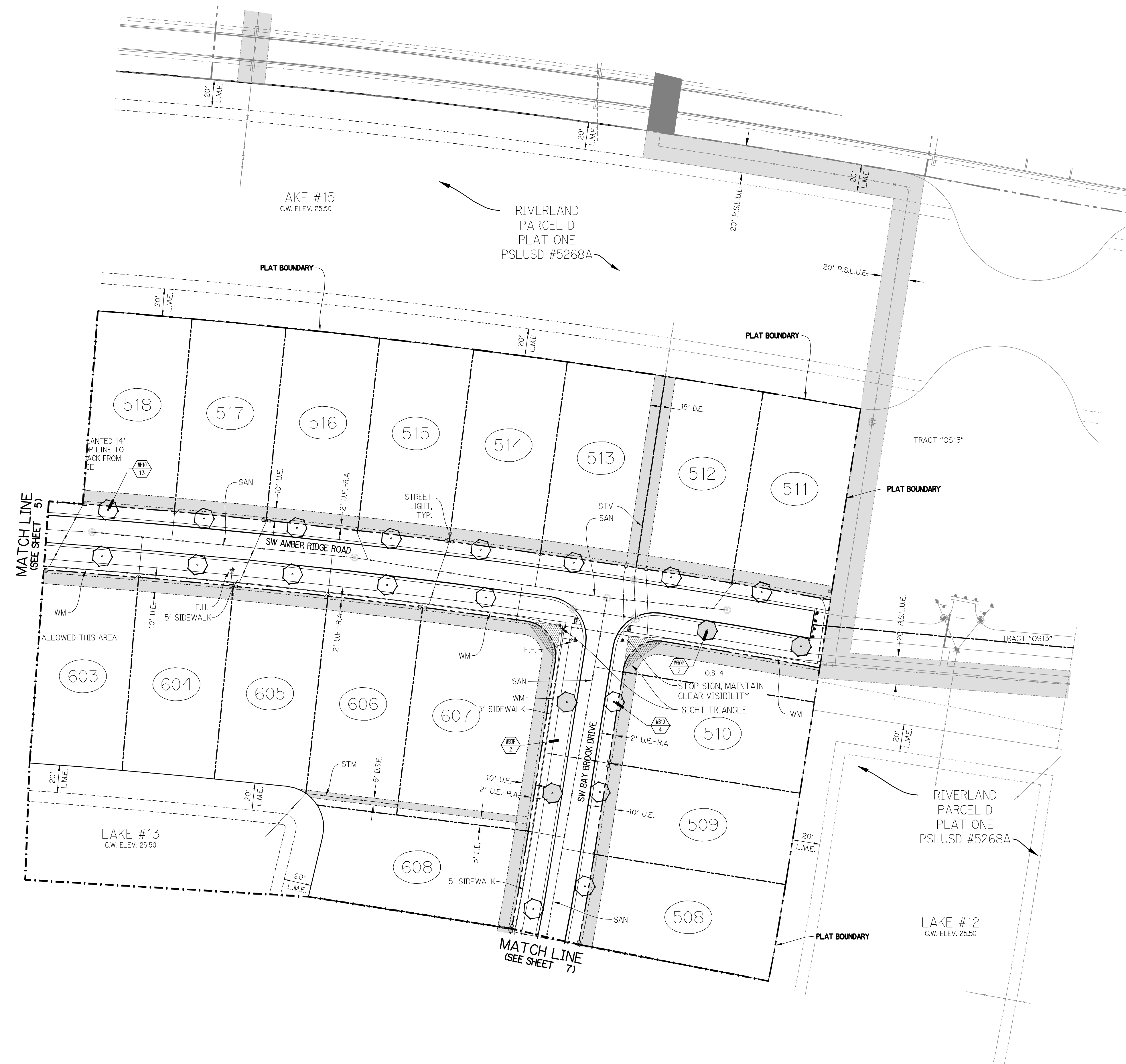
D.F.	DRAINAGE EASEMENT	O.E.	OVERHANG EASEMENT
L.M.E.	LAND MAINTENANCE EASEMENT	G.E.	GRADING EASEMENT
L.M.A.E.	LAND MAINTENANCE ACCESS EASEMENT	P.S.L.	POST SLUICE
P.W.	RIGHT OF WAY	L.E.	LANDSCAPE EASEMENT
U.E.	UTILITY EASEMENT	D.S.E.	DRAINAGE SWALE EASEMENT
U.E.-R.A.	UTILITY EASEMENT - RESTRICTED AREA USE	O.S.	OPEN SPACE
STW	STORM SEWER LINE WITH REGULATION	S&M	SEED & MASH
STW	STORM SEWER LINE WITH MANHOLE	SGN	SGN
STW	STORM SEWER LINE WITH CATCH BASIN	1	LOT NUMBER
S&M	SANITARY SEWER LINE WITH MANHOLE		
W	WATER MAIN		
	WATER SLOTT. TO LOT WITH METER		
	W.M.		
	SANITARY SLOTT. TO LOT WITH CLEANDOUT		



PSLUSD # 5268C PSL PROJECT NO. P22-289

FEET;

P3-5



Plant List (Sheet P3-6 Only)

SYM	QTY	NAME	SPECIFICATIONS
PALM6	17	Wodyetia bifurcata / Foxtail Palm	10' ct, 4" min. cal. crown shift, straight trunk, full head, unscarred trunk, intact fronds
UBOP	4	Optional Additional Street Tree - Wodyetia bifurcata / Foxtail Palm	10' ct, 4" min. cal. crown shift, straight trunk, full head, unscarred trunk, intact fronds

NOTE:  
ALL PLANT MATERIAL SHALL MEET OR EXCEED SIZE AND CONTAINER SPECIFICATIONS IN PLANT LIST. PLANT MATERIALS NOT MEETING SPECIFICATIONS WILL BE REJECTED. CONTRACTOR TO COORDINATE AVAILABILITY ISSUES WITH OWNER PRIOR TO COMMENCING WORK.

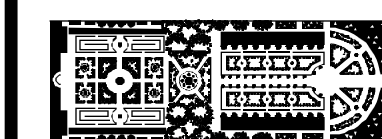
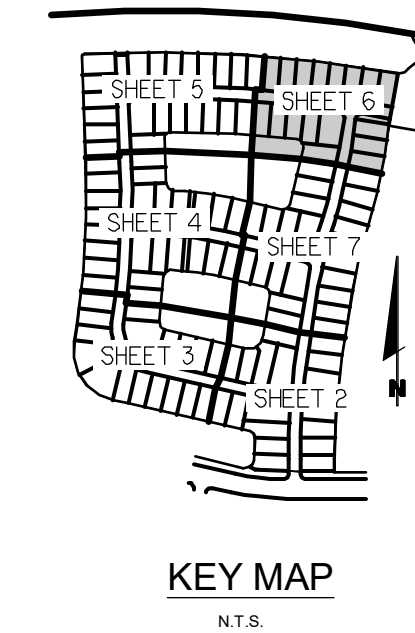
\* DENOTES NATIVE SPECIES

### Symbols Legend

D.E.	DRAINAGE EASEMENT	O.E.	OVERHANG EASEMENT
L.M.E.	LAKE MAINTENANCE EASEMENT	G.E.	GRADING EASEMENT
L.M.A.E.	LAKE MAINTENANCE ACCESS EASEMENT	PSL	PORT ST LUCIE
R.O.W.	RIGHT OF WAY	L.E.	LANDSCAPE EASEMENT
U.E.	UTILITY EASEMENT	D.S.E.	DRAINAGE SWALE EASEMENT
U.E.-R.A.	UTILITY EASEMENT - RESTRICTED AREA (SEE "U.E." PLAT DEDICATION)	O.S.	OPEN SPACE
STM	STORM SEWER LINE WITH MANHOLE	S&M	SEED & MULCH
STM	STORM SEWER LINE WITH CATCH BASIN	STN	STON
SAN	SANITARY SEWER LINE WITH MANHOLE	LOT	LOT NUMBER
WM	WATER MAIN	FIRE	FIRE HYDRANT
W/M	WATER SVC. TO LOT WITH METER		
S&M	SANITARY SVC. TO LOT WITH CLEANOUT		
C.D.			



PSLUSD # 5268C PSL PROJECT NO. P22-289



PARKER-YANNETTE  
design group, inc.

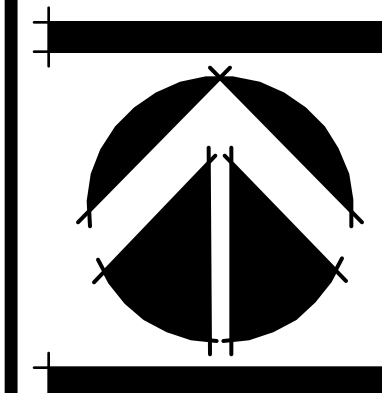
LANDSCAPE ARCHITECTURE  
PLANNING • GRAPHICS  
825 South U.S. Highway One  
Suite 330  
Jupiter, Florida 33477

Telephone: (561) 747-5069  
Fax: (561) 747-2041  
Email: mail@pydg.com  
License #LC-0000297

**RIVERLAND - PARCEL 'D' - PLAT 3**  
Developer: Riverland Associates III, LLLP  
PORT ST. LUCIE, FLORIDA  
PLANTING PLAN

DATE: 8/21/8  
DRAWN BY: AJO/TY  
JOB NO.: 18-095  
SCALE: 1" = 40'-0"  
FILENAME: RivParD STP

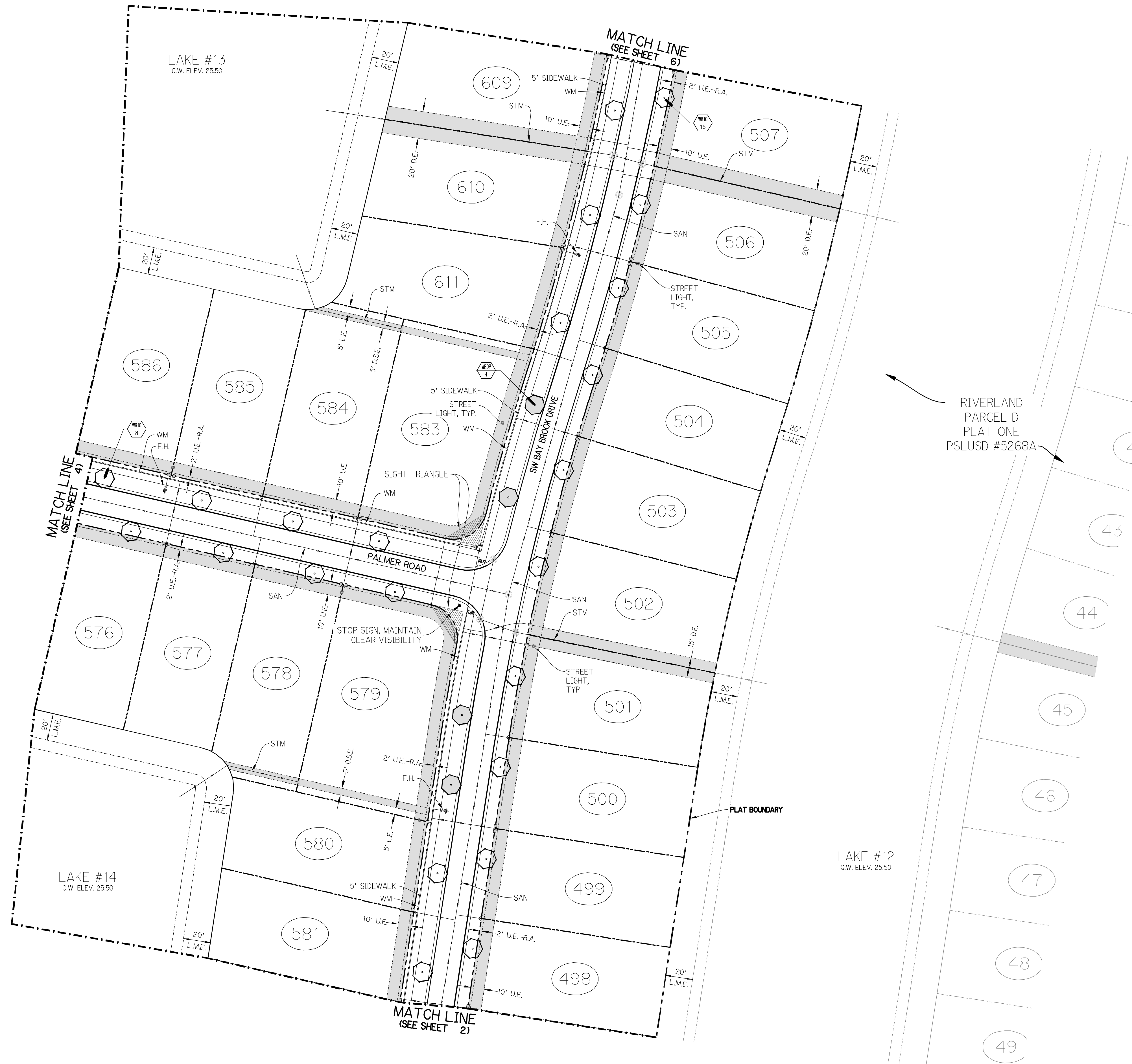
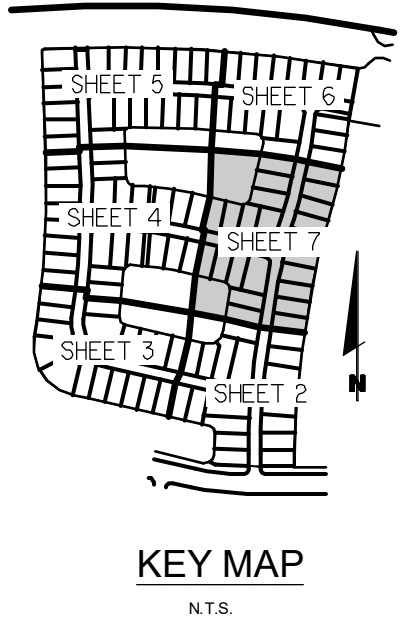
REVISIONS:  
12/2/22 PSL prints / rev util  
5/8/23



SHEET:







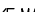


P3-6





Plant List (Sheet P3-7 Only)			
SYM	QTY	NAME	REMARKS
<b>PALMS</b>			
WBOP	23	Wodyetia bifurcata / Foxtail Palm	10' ci, 4" min. cal. crown shaft, straight trunk, full head, unscarred trunk, intact, fronds
WBOP	4	Optional Additional Street Tree - Wodyetia bifurcata / Foxtail Palm	10' ci, 4" min. cal. crown shaft, straight trunk, full head, unscarred trunk, intact, fronds

NOTE:  
ALL PLANT MATERIAL SHALL MEET OR EXCEED SIZE AND CONTAINER SPECIFICATIONS IN PLANT LIST. PLANT MATERIALS NOT MEETING SPECIFICATIONS WILL BE REJECTED. CONTRACTOR TO COORDINATE AVAILABILITY ISSUES WITH OWNER PRIOR TO COMMENCING WORK.

* DENOTES NATIVE SPECIES	
<h2>Symbols Legend</h2>	
D.E. DRAINAGE EASEMENT	O.E. OVERHANG EASEMENT
L.A.E. LAKE WASTEWATER EASEMENT	G.E. GRADING EASEMENT
L.A.A.E. LAKE WASTEWATER ACCESS EASEMENT	P.S.L. PORT ST. LOCKE
R.O.W. RIGHT OF WAY	L.E. LANDSCAPE EASEMENT
U.E. UTILITY EASEMENT	D.S.E. DRAINAGE SIGNAL EASEMENT
U.E.-P.A. UTILITY EASEMENT - RESTRICTED AREA	O.S. OPEN SPACE
USE: "UIC" PLAT DEDICATION	S.M. SEED & MULCH
STM  STORM SEWER LINE WITH MANHOLE	S  SEED & MULCH
SLM  STORM SEWER LINE WITH CATCH BASIN	LOT  LOT NUMBER
SAN  SANITARY SEWER LINE WITH MANHOLE	
WV  WATER MAIN	
 WATER SVC. TO LOT WITH METER	 FIRE HYDRANT
W.M. WATER MAIN	
 SANITARY SVC. TO LOT WITH CLEANOUT	

