



**CITY OF PORT ST. LUCIE, FLORIDA**

# NW EAST TORINO PARKWAY AND MIDWAY ROAD TURN LANE IMPROVEMENTS

**LYING WITHIN  
SECTIONS 01, TOWNSHIP 36 S, RANGE 39 E  
PORT ST. LUCIE, FLORIDA  
TO BE BID WITH TORINO PKWY AND  
TURTLE DOVE LN - ROUNDABOUT**



**LOCATION MAP**



**OWNER**

CITY OF PORT ST. LUCIE  
FRANK KNOTT, MANAGER  
121 SW PORT ST LUCIE BLVD  
PORT ST LUCIE, FL 34985  
PHONE: (772) 344-4290

**ENGINEER**

JOSEPH W. CAPRA, P.E.  
FLORIDA P.E. NO. 37638  
CAPTEC ENGINEERING, INC.  
301 N.W. FLAGLER AVENUE  
STUART, FLORIDA 34994  
PHONE: (772) 692-4344  
EMAIL: CAPTECinfo@goCAPTEC.com

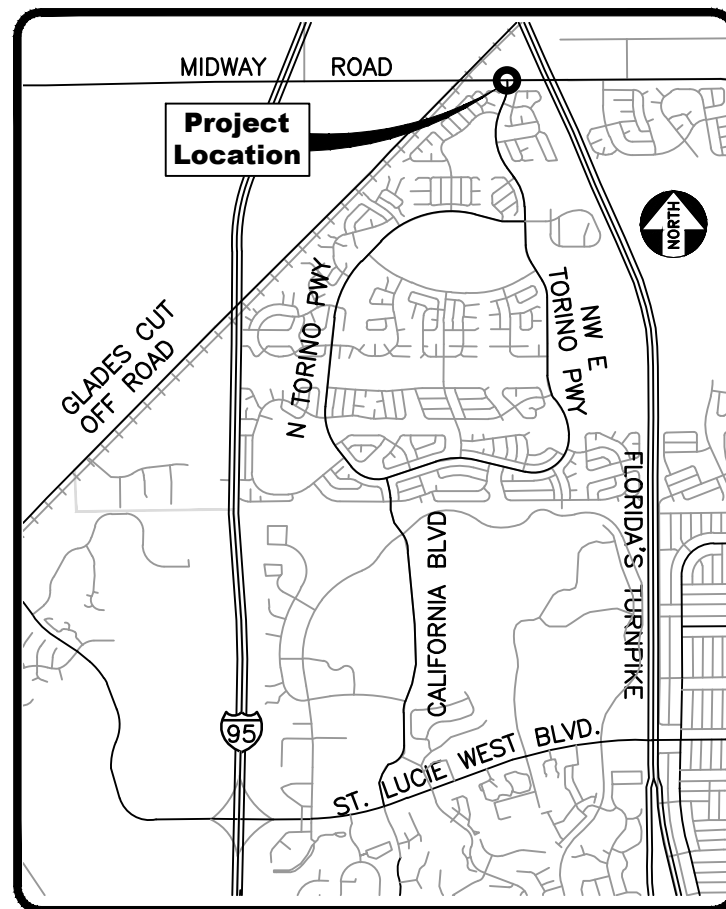
**100% SUBMITTAL**

**1/2/23**

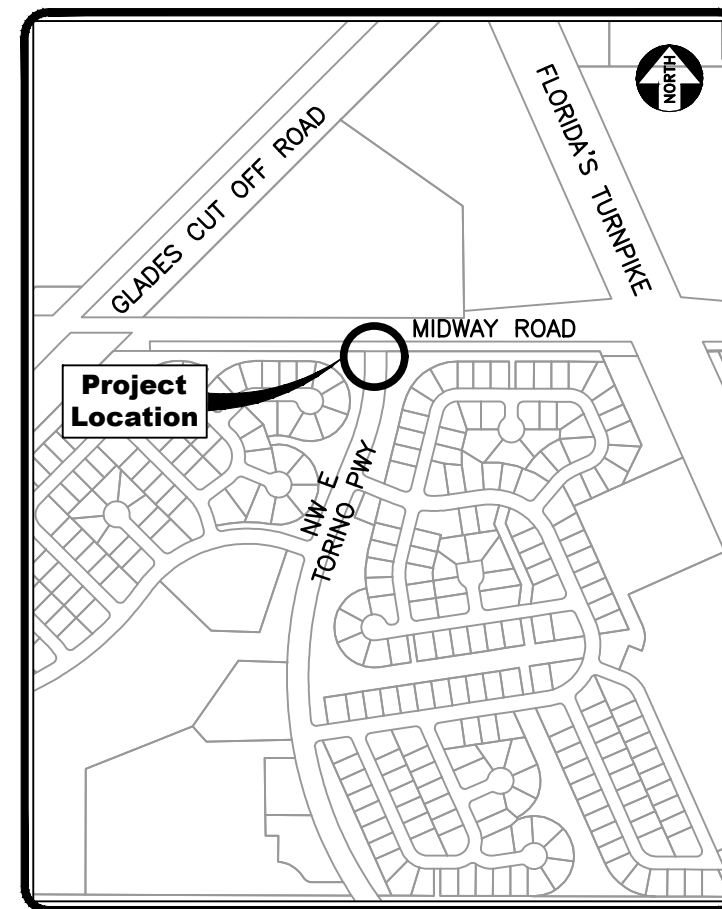
**REVISED 2/7/23  
PER CPSL 100% COMMENTS**

**SHEET NUMBER / SHEET TITLE**

- 1 - COVER
- 2 - PAY ITEMS SUMMARY
- 3 - GENERAL NOTES
- 4 - SWPPP & DETAILS
- 5 - TYPICAL SECTION
- 6 - PROJECT LAYOUT
- 7 - DEMOLITION & EROSION CONTROL PLAN
- 8 - PLAN
- 9 - 10 - CROSS SECTIONS
- 11 - PAVEMENT MARKING & SIGNAGE
- 12 - MAINTENANCE OF TRAFFIC
- S1-S2 - BETSY LINDSAY, INC SURVEY



**VICINITY MAP**



**LOCATION MAP**

**NOTE: THESE PLANS ARE IN ENGLISH UNITS.**  
THESE PLANS HAVE BEEN PREPARED IN ACCORDANCE WITH THE STATE OF FLORIDA, DEPARTMENT OF TRANSPORTATION:  
DESIGN STANDARDS  
PLANS, SPECIFICATIONS, AND ESTIMATES  
STANDARD SPECIFICATIONS FOR ROAD AND BRIDGE CONSTRUCTION  
THE MANUAL OF UNIFORM MINIMUM STANDARDS FOR DESIGN, CONSTRUCTION AND MAINTENANCE FOR STREETS AND HIGHWAYS (GREENBOOK)  
THE FEDERAL HIGHWAY ADMINISTRATION (FHWA) MANUAL ON UNIFORM TRAFFIC CONTROL DEVICES  
NOTE: ALL ABOVE REFERENCES REFER TO LATEST EDITIONS

Item	Description	Quantity	Unit
101-1	Mobilization/Demobilization (Includes Video / Survey/ Testing / Utility Coord / Pothole)	1	LS
101-1	Survey (Layout)	1	LS
101-1	Survey (As-builts)	1	LS
102-1	Maintenance of Traffic	1	LS
104	NPDES Compliance (Erosion Control)	1	LS
104-10-3	Staked Silt Fence	800	LF
110-1-1	Clearing & Grubbing / Demolition (Includes Exist. Curb & Shoulder / Required Topsoils - See Geotech Report)	0.40	AC
120-1	Excavation	600	CY
160-4	Type 'B' Stabilization (12")	1,400	SY
285-701	Optional Base Group 1 (Shoulder)	300	SY
285-709	Optional Base Group 9 (Turn Lane)	950	SY
327-70-6	Milling Existing Asphalt 1.5" Average Depth	2,450	SY
327-70-3	Milling Existing Asphalt 4.5" Average Depth (Shoulder Removal)	130	SY
334-1-13	1.5" Type SP-12.5 Asphaltic Concrete (Traffic C) (New Pavement)	80	TN
334-1-13	1.5" Type SP-9.5 Asphaltic Concrete (Traffic C) (Overlay/ New Pavement)	310	TN
425-1-521	Type 'C' Inlet (<10')	3	EA
425-2-41	Manhole P-7 (<10')	1	EA
430-174-124	24" RCP	465	LF
430-982-129	Mitered End Section 24"	1	EA
520-3	Valley Gutter - Concrete	75	LF
570-1-2	Performance Turf/Sod	1,300	SY
660-2-101	Loop Detector Assembly (Adjust / Reinstall)	1	LS
700-1-13	Single-Post Sign (F&I) (Includes R3-8a Panel)	1	EA
700-1-50	Sign Relocation	1	EA
711-11-170	Thermoplastic White Regular Arrows (Thru and Turn)	121	EA
711-11-125	Thermoplastic White 24" Solid Line	36	LF
711-11-101	Thermoplastic White 6" Solid Line	0.362	GM
711-11-141	Thermoplastic White Skip 6" (2-4)	0.157	GM
711-11-201	Thermoplastic Yellow 6" Solid Line	0.213	GM
1080-15	Utility Adjustments (Water & Sanitary Valve Relocations / FPL & ATT Relocations (Allowance))	1	LS
999-1	Signal Head Adjustment / Timing	1	LS

### PAY ITEM LIST

- 101-1 RECORD DRAWINGS AND ALL CERTIFICATION/CONVEYANCE DOCUMENTS MUST BE SUBMITTED PRIOR TO SCHEDULING A FINAL INSPECTION.  
- ALL RECORD DRAWINGS SHALL BE SUBMITTED IN CONFORMANCE WITH THE CITY OF PORT ST. LUCIE'S MINIMUM RECORD DRAWING STANDARDS.  
- ALL RECORD DRAWINGS SHALL BE SIGNED AND SEALED BY A PROFESSIONAL ENGINEER REGISTERED IN THE STATE OF FLORIDA.  
- ALL RECORD AS-BUILT DRAWINGS SHALL BE SIGNED AND SEALED BY A LICENSED LAND SURVEYOR REGISTERED IN THE STATE OF FLORIDA.  
- A MINIMUM OF THREE (3) SETS OF COMPLETE RECORD DRAWINGS SHALL BE SUBMITTED IN CORRELATION WITH THE APPROVED CONSTRUCTION DRAWINGS.
- 102-1 PAY ITEMS INCLUDES ALL ITEMS FOR MAINTENANCE OF TRAFFIC WHICH ARE NOT INCLUDED FOR PAYMENT UNDER SEPARATE ITEMS. INCLUDES PEDESTRIAN MAINTENANCE OF TRAFFIC, MAINTENANCE OF PARKING, MAINTENANCE OF US MAIL BOXES AND ANY NECESSARY TEMPORARY PAVEMENT MARKINGS AND TRAFFIC DETOURS. ALSO INCLUDES REMOVAL OF ALL EXISTING CONFLICTING PAVEMENT MARKINGS.
- 104 INCLUDES EROSION CONTROL, USED FOR EROSION CONTROL THAT FACILITATES PLANT GROWTH, WHILE PERMANENT GRASS IS ESTABLISHED. BIODEGRADABLE EROSION CONTROL BLANKETS ARE INSTALLED OVER A SEEDED AREA THAT MAY BE USED ON FILL SLOPES AND IN DITCHES, AND LEFT IN PLACE TO BIODEGRADE.
- 104-12 TO BE USED IN ACCORDANCE WITH THE EROSION AND SEDIMENT CONTROL MANUAL AND THE DESIGN STANDARDS. THIS ITEM IS COMMONLY USED IN AREAS WHERE CONTINUOUS CONSTRUCTION ACTIVITIES CHANGE THE NATURAL CONTOUR AND DRAINAGE RUNOFF.
- 110-1-1 CONSISTS OF COMPLETE REMOVAL AND DISPOSAL OF ALL VEGETATION, DEBRIS, DRAINAGE STRUCTURES, FLEXIBLE PAVEMENT, BUILDINGS, OR ANY OTHER OBSTRUCTIONS IN ALL AREAS WHERE EXCAVATION IS TO BE DONE, OR WHERE EMBANKMENTS OR STRUCTURES WILL BE CONSTRUCTED. THIS INCLUDES ROADWAY AREA, DITCH AREA, BORROW AND MATERIAL PITS, AND AREAS WHERE CULVERTS OR PIPELINES WILL BE CONSTRUCTED. ALSO INCLUDES SHRUB AND TREE TRIMMING IDENTIFIED IN THE CONTRACT DOCUMENTS.  
CONSISTS OF REMOVING AND DISPOSING OF EXISTING CONCRETE PAVEMENT, CONCRETE SIDEWALKS, SLOPE PAVEMENT, DITCH PAVEMENT AND CURB AND GUTTER, WHERE REQUIRED BECAUSE OF CONSTRUCTION OPERATIONS
- 120-1 INCLUDES ALL EARTHWORK EXCAVATION / EMBANKMENT / REGRADING FOR ROADWAY & DRIVEWAYS
- 160-4 TYPE CONSISTS OF STABILIZING DESIGNATED PORTIONS OF OF THE ROADBED TO PROVIDE A FIRM AND UNYIELDING SUBGRADE. STABILIZING MATERIAL CAN BE OBTAINED FROM EXISTING BASE MATERIAL, OR FROM COMMERCIAL AND LOCAL MATERIALS.
- 285-701 CONSISTS OF OPTIONAL BASE, BASE GROUP 01, CONSISTS OF BASE CONSTRUCTION OF ONE OF THE OPTIONAL MATERIALS SHOWN IN THE PLAN TYPICAL SECTIONS. THE PLANS WILL INCLUDE TYPICAL SECTIONS SPECIFYING ONLY THE BASE GROUP ON NEW CONSTRUCTION AND COMPLETE RECONSTRUCTION PROJECTS, PERMITTING THE MAXIMUM NUMBER OF GENERAL USE OPTIONS THAT THE CONTRACTOR CAN UTILIZE.
- 285-709 CONSISTS OF OPTIONAL BASE, BASE GROUP 09, CONSISTS OF BASE CONSTRUCTION OF ONE OF THE OPTIONAL MATERIALS SHOWN IN THE PLAN TYPICAL SECTIONS. THE PLANS WILL INCLUDE TYPICAL SECTIONS SPECIFYING ONLY THE BASE GROUP ON NEW CONSTRUCTION AND COMPLETE RECONSTRUCTION PROJECTS, PERMITTING THE MAXIMUM NUMBER OF GENERAL USE OPTIONS THAT THE CONTRACTOR CAN UTILIZE.
- 327-70-6 CONSISTS OF MILLING AN AVERAGE DEPTH OF 1.5", CONSISTS OF REMOVING EXISTING AC PAVEMENT TO IMPROVE THE RIDEABILITY OF THE FINISHED PAVEMENT, TO LOWER THE FINISHED GRADE ADJACENT TO EXISTING CURB PRIOR TO RESURFACING, OR TO COMPLETELY REMOVE EXISTING PAVEMENT. INCLUDES TRANSPORTING THE MILLED MATERIAL TO THE ASPHALT PLANT SITE, AND STOCKPILING THE MATERIAL. ALSO INCLUDES REMOVAL OF EXISTING REFLECTIVE PAVEMENT MARKERS.
- 327-70-3 CONSISTS OF MILLING AN AVERAGE DEPTH OF 4.5", CONSISTS OF REMOVING EXISTING AC PAVEMENT TO IMPROVE THE RIDEABILITY OF THE FINISHED PAVEMENT, TO LOWER THE FINISHED GRADE ADJACENT TO EXISTING CURB PRIOR TO RESURFACING, OR TO COMPLETELY REMOVE EXISTING PAVEMENT. INCLUDES TRANSPORTING THE MILLED MATERIAL TO THE ASPHALT PLANT SITE, AND STOCKPILING THE MATERIAL. ALSO INCLUDES REMOVAL OF EXISTING REFLECTIVE PAVEMENT MARKERS.
- 334-1-13 CONSISTS OF SP-12.5 FOR 1.5" THICKNESS AT 165 LB/SY, CONSISTS OF USING SUPERPAVE ASPHALT MIXTURE DESIGN AND ANALYSIS TEST EQUIPMENT AND PROCEDURES, GYRATORY COMPACTOR TO BETTER SIMULATE ACTUAL PAVEMENT LOADINGS (DIFFERENT TRAFFIC LEVELS AVAILABLE) TO PROVIDE FOR A BETTER RUT-RESISTANT MIX DESIGN.
- 334-1-13 CONSISTS OF SP-9.5 FOR 1.5" THICKNESS AT 165 LB/SY, CONSISTS OF USING SUPERPAVE ASPHALT MIXTURE DESIGN AND ANALYSIS TEST EQUIPMENT AND PROCEDURES, GYRATORY COMPACTOR TO BETTER SIMULATE ACTUAL PAVEMENT LOADINGS (DIFFERENT TRAFFIC LEVELS AVAILABLE) TO PROVIDE FOR A BETTER RUT-RESISTANT MIX DESIGN.
- 520-3 INCLUDES CONSTRUCTION OF VALLEY GUTTER, AS SHOWN ON SHEET 4 OF 11.
- 570-1-2 CONSISTS OF PERFORMANCE TURF, SOD
- 700-1-50 RELOCATE PANELS, POSTS, FOUNDATION, AND ANY OTHER ITEMS ATTACHED TO THE ASSEMBLY, AS NOTED ON THE PLAN.
- ALL 711 ITEMS INCLUDES ALL CLEANING AND PREPARING OF SURFACES; FURNISHING OF ALL MATERIALS; APPLICATION; CURING AND PROTECTION OF ALL ITEMS; PROTECTION OF TRAFFIC; FURNISHING OF ALL TOOLS; MACHINES AND EQUIPMENT; AND 201 ALL INCIDENTALS NECESSARY TO COMPLETE THE WORK.

NOTE: CONTRACTOR SHALL FOLLOW FDOT SPECIFICATION STANDARDS REGARDING PAY ITEMS LISTED UNLESS OTHERWISE DETAILED IN NOTES PROVIDED ABOVE. CONTRACTOR SHALL CONTACT ENGINEER OF RECORD FOR ANY ADDITIONAL CLARIFICATION OF PAY ITEMS.

301 NW Flagler Ave.  
Stuart, Florida 34994  
Phone: (772) 892-4344  
Fax: (772) 892-4341

**CAPTEC**  
Engineering Professionals  
Civil Engineering Professionals

Engineering Business  
No. EB-007857

DATE:	8-15-22
DRAWN BY:	MDB
DESIGNED BY:	GA
CHECKED BY:	JWC
PROJECT NO.:	1813.30
HORIZ. SCALE:	
VERT. SCALE:	
CADD FILE:	

NO.	DATE	BY	REVISIONS
2	2/7/23	MDB	100% COMMENTS REVISIONS
1	1/2/23	MDB	100% SUBMITTAL

SCALE VERIFICATION

0 10.5

SOLID BAR IS EQUAL TO HALF AN INCH ON ADJUST ALL SCALED DIMENSIONS ACCORDINGLY

**NW EAST TORINO PARKWAY AND MIDWAY ROAD TURN LANE IMPROVEMENTS**  
CITY OF PORT ST. LUCIE, FLORIDA

**PAY ITEMS SUMMARY**

Joseph W. Capra  
301 N.W. Flagler Ave.  
Stuart, Florida 34994  
P.E. No. 37638

THIS DOCUMENT, TOGETHER WITH THE CONCEPTS AND DESIGNS PRESENTED HEREIN, AS AN INSTRUMENT OF SERVICE, IS INTENDED ONLY FOR THE SPECIFIC PURPOSE AND CLIENT FOR WHICH IT WAS PREPARED. REUSE OF AND IMPROPER RELIANCE ON THIS DOCUMENT WITHOUT WRITTEN AUTHORIZATION AND ADOPTION BY CAPTEC ENGINEERING, INC. SHALL BE WITHOUT LIABILITY TO CAPTEC ENGINEERING, INC.

**GENERAL NOTES**

- ALL WORK, CONCRETE AND MATERIALS SHALL COMPLY WITH THE LATEST EDITION, INCLUDING ALL REVISIONS, OF THE FOLLOWING STANDARDS AND PUBLICATIONS:
  - AMERICAN ASSOCIATION OF STATE HIGHWAY AND TRANSPORTATION OFFICIALS (AASHTO);
  - AMERICAN CONCRETE INSTITUTE (ACI);
  - AMERICAN SOCIETY FOR TESTING MATERIAL (ASTM);
  - AMERICANS WITH DISABILITIES ACT ACCESSIBILITY GUIDELINES (ADAAG);
  - FDOT ROADWAY DESIGN STANDARDS;
  - FDOT STANDARD SPECIFICATIONS FOR ROAD AND BRIDGE CONSTRUCTION;
  - FDOT STRUCTURES STANDARD INDEX.
- THE CONTRACTOR IS TO USE CAUTION WHEN CONSTRUCTING THE PROJECT TO AVOID ALL EXISTING UTILITIES, EXISTING LANDSCAPING FEATURES AND EXISTING DRAINAGE STRUCTURES.
- UNLESS OTHERWISE SHOWN, ALL EXISTING DRAINAGE STRUCTURES, TREES AND UTILITY POLES WITHIN LIMITS OF CONSTRUCTION ARE TO REMAIN.
- PRIOR TO REMOVAL OF EXISTING PAVEMENT OR CONCRETE, SAW CUTS AT THE INTERFACES MUST BE MADE TO REDUCE THE RISK OF DAMAGE TO THE REMAINING SURFACE. THE CONTRACTOR SHALL BE RESPONSIBLE FOR ALL DAMAGES TO PAVEMENT OR CONCRETE SURFACES. ALL DAMAGED AREAS MUST BE REPAIRED TO EXISTING CONDITIONS OR BETTER, AT THE COST OF THE CONTRACTOR, PRIOR TO FINAL PAYMENT.
- ALL DISTURBED AREAS SHALL BE RESTORED TO EXISTING OR BETTER CONDITIONS. THE CONTRACTOR SHALL ONLY BE ENTITLED FOR PAYMENT OF AUTHORIZED AREAS WITHIN THE PROJECT WORK LIMITS AS ILLUSTRATED IN CONSTRUCTION PLANS. CONTRACTOR TO NOTIFY CITY OF PORT ST. LUCIE AND ENGINEER OF RECORD IF WORK IS ANTICIPATED OUTSIDE OF CONSTRUCTION PLANS. THE PROJECT WORK LIMITS SHALL BE ESTABLISHED AND AGREED UPON BY THE CITY OF PORT ST. LUCIE AND CONTRACTOR PRIOR TO CONSTRUCTION. CONTRACTOR SHALL MAKE EVERY EFFORT TO MINIMIZE UNNECESSARY DAMAGE. ALL DAMAGED AREAS OUTSIDE THE PROJECT WORK LIMITS MUST BE REPAIRED TO EXISTING CONDITIONS OR BETTER, AT THE COST OF THE CONTRACTOR, PRIOR TO FINAL PAYMENT. CONTRACTOR SHALL ALSO TAKE CARE TO AVOID SPRINKLER HEADS AND IRRIGATION LINES, UNLESS AFOREMENTIONED CANNOT BE AVOIDED IN WHICH CASE IRRIGATION LINES WILL BE RELOCATED TO COVER ALL GRASSED AREAS. THIS COST IS INCIDENTAL TO THE CLEARING AND GRUBBING COST.
- PROPOSED PAVEMENT MARKINGS SHALL BE THERMOPLASTIC IN ACCORDANCE WITH FDOT STANDARD SPECIFICATION 711. CONTRACTOR TO ALLOW 20 DAY CURING PERIOD PRIOR TO PLACEMENT OF THERMOPLASTIC. TEMPORARY STANDARD PAINT PAVEMENT MARKINGS ARE INCLUDED IN THE COST OF THE THERMOPLASTIC MARKINGS.
- THE MAINTENANCE OF TRAFFIC PLAN (MOT) SHALL BE IN ACCORDANCE WITH THE APPLICABLE FDOT INDEX (102-600 SERIES) AND THE MANUAL ON UNIFORM TRAFFIC CONTROL FOR STREETS AND HIGHWAYS (MUTCD). IF THE STANDARD INDEX TYPICALS DO NOT APPLY TO THE MOT REQUIREMENTS OF THIS PROJECT, THE CONTRACTOR SHALL SUBMIT A SIGNED AND SEALED MOT FOR THE ENGINEER'S APPROVAL PRIOR TO THE WORK BEING PERFORMED. SEE THE TRAFFIC CONTROL PLAN MOT NOTES ON SHEET 11 FOR ADDITIONAL REQUIREMENTS. TEMPORARY STANDARD PAINT PAVEMENT MARKINGS PER STANDARD SPECIFICATION 710 FOR MOT TRAFFIC PATTERNS SHALL BE INCLUDED IN THE MOT COSTS.
- ALL FIELD STAKING REQUIRED FOR CONSTRUCTION SHALL BE PERFORMED BY A LICENSED FLORIDA SURVEYOR.
- CONTRACTOR SHALL MAINTAIN BEST MANAGEMENT PRACTICES (BMP'S) AS REQUIRED BY THE REGULATORY AUTHORITIES. THESE BMP'S SHALL INCLUDE, BUT ARE NOT LIMITED TO SILT FENCE AND ANY OTHER MEANS NECESSARY TO PREVENT SEDIMENT DISCHARGE FROM THE DISTURBED AREAS.
- ALL ELEVATIONS, EXISTING AND PROPOSED, ARE BASED ON NORTH AMERICAN VERTICAL DATUM OF 1988 (NAVD 88).
- ANY KNOWN OR SUSPECT HAZARDOUS MATERIAL FOUND ON THE PROJECT BY THE CONTRACTOR SHALL BE IMMEDIATELY REPORTED TO THE ENGINEER, WHO SHALL DIRECT THE CONTRACTOR TO PROTECT THE AREA FROM FURTHER ACCESS. THE ENGINEER IS TO NOTIFY THE PROPER REGULATORY AUTHORITY OF THE DISCOVERY. THE PROPER REGULATORY AUTHORITY WILL ADVISE/DIRECT THE ENGINEER IN THE INVESTIGATION, IDENTIFICATION AND/OR REMOVAL/REMEDICATION OF THE MATERIAL IN QUESTION AS NEEDED. THE CONTRACTOR SHALL NOT RETURN TO THE AREA OF SUSPECTED CONTAMINATION UNTIL APPROVAL IS PROVIDED BY THE ENGINEER AND/OR THE REGULATORY AUTHORITY.
- THE CONTRACTOR SHALL NOT BRING ANY HAZARDOUS MATERIALS ONTO THE PROJECT. SHOULD THE CONTRACTOR REQUIRE SUCH FOR PERFORMING THE CONTRACTED WORK, THE CONTRACTOR SHALL REQUEST, IN WRITING, WRITTEN PERMISSION FROM THE ENGINEER. THE CONTRACTOR SHALL PROVIDE A COPY OF THE REQUEST TO THE CITY OF PORT ST. LUCIE PROJECT MANAGER - FRANK KNOTT. THE CONTRACTOR SHALL PROVIDE CITY OF PORT ST. LUCIE PROJECT MANAGER - FRANK KNOTT. WITH A COPY OF THE MATERIAL SAFETY DATA SHEET (MSDS) FOR EACH HAZARDOUS MATERIAL PROPOSED FOR USE, AND PROVIDE A DESCRIPTION OF THE SPECIFIC MANNER IN WHICH THE MATERIAL WILL BE USED. THE ENGINEER SHALL COORDINATE WITH THE CITY OF PORT ST. LUCIE PROJECT MANAGER - FRANK KNOTT PRIOR TO ISSUING WRITTEN APPROVAL TO THE CONTRACTOR.

BECAUSE SAID LAW DOES NOT TREAT PETROLEUM PRODUCTS THAT ARE PROPERLY CONTAINERIZED AS HAZARDOUS MATERIALS, SUCH PRODUCTS DO NOT REQUIRE AN MSDS SUBMITTAL. ALL BULK PETROLEUM PRODUCTS STORED ON SITE SHALL REQUIRE PROPER STORAGE WHICH INCLUDES SECONDARY CONTAINMENT.

- THE CONTRACTOR SHALL REVIEW LOCATION OF PROPOSED STAGING AREAS DEPICTED IN CONSTRUCTION PLANS. ADJUSTMENTS OR MODIFICATIONS TO STAGING AREA LOCATIONS SHALL BE APPROVED BY CITY OF PSL & ENGINEER OR RECORD PRIOR TO CONSTRUCTION - CITY OF PORT ST. LUCIE PROJECT MANAGER - FRANK KNOTT (772) 344-4290.
- CONTRACTOR SHALL OBTAIN A NPDES PERMIT PRIOR TO COMMENCING CONSTRUCTION.
- CONTRACTOR SHALL USE DILIGENT CAUTION TO COMPLETE ALL WORK WITHIN THE CITY OF PORT ST. LUCIE RIGHT-OF-WAY, AS DESCRIBED IN THE PLANS. IN NO CASE MAY THE CONTRACTOR ENCR OACH ON PRIVATELY OWNED PROPERTY.
- CONTRACTOR SHALL PROVIDE THE CITY OF PORT ST. LUCIE 2 HARD COPIES OF SIGNED & SEALED AS-BUILT DRAWINGS FOLLOWING ACCEPTANCE OF CONSTRUCTION. THE AS-BUILT SUBMITTAL SHALL ALSO INCLUDE A COMPACT DISC WITH ALL AS-BUILT CAD FILES AND .PDF FILES OF DELIVERABLES.
- CONTRACTOR SHALL REMOVE ALL LITTER AND MOW ONCE EVERY 30 DAYS DURING THE PROJECT DURATION. COST OF MOWING AND LITTER REMOVALS IS INCIDENTAL TO THE PROJECT UNDER NPDES.
- DURING CONSTRUCTION, ANY EXISTING PEDESTRIAN PATHS ARE TO REMAIN USABLE AND ACCESSIBLE, OR ALTERNATE ACCESSIBLE PATHS MUST BE PROVIDED. ALTERNATE PATH SURFACE MUST BE ACCEPTABLE TO THE CITY OF PORT ST. LUCIE, PROPERLY DELINEATED, AND SIGNED.
- ALL SOD SHALL MATCH EXISTING.

**UTILITY NOTES**

- THE INDICATED LOCATION OF UNDERGROUND UTILITIES, STRUCTURES AND FACILITIES IS APPROXIMATE, AND REFLECTS THE BEST INFORMATION AVAILABLE FROM SURVEYS AND RECORDS. THE CONTRACTOR SHALL VERIFY THE ACTUAL LOCATION AND EXTENT OF UNDERGROUND FACILITIES PRIOR TO PROCEEDING WITH ANY CONSTRUCTION ACTIVITY WHICH AFFECT SUCH FACILITIES.
- THOSE EXISTING UTILITY WHICH ARE TO REMAIN IN PLACE SHALL BE CAREFULLY PROTECTED FROM DAMAGE DUE TO PROPOSED CONSTRUCTION OPERATIONS. CONTRACTOR IS RESPONSIBLE FOR ANY DAMAGE TO THE EXISTING UTILITIES CAUSED BY HIS OPERATIONS. CONTRACTOR SHALL UTILIZE CONSTRUCTION METHODS (HAND DIGGING, BRACING, ETC.) WHICH WOULD MINIMIZE POTENTIAL DAMAGE TO EXISTING FACILITIES (WATER / SEWER LINES, FIBER OPTIC, ETC.) IN CLOSE PROXIMITY TO THE WORK.
- THE CONTRACTOR WILL ADJUST WATER VALVE BOXES & LIDS, SPRINKLER CONTROL BOXES, AIR RELEASES, ETC. AS REQUIRED TO PROPOSED FINISHED GRADE. THE CITY OF PORT ST. LUCIE UTILITY DEPARTMENT WILL REVIEW EACH LOCATION IN THE FIELD AT STAKEOUT TO VERIFY POTENTIAL CONFLICTS AND SOLUTIONS. VALVES ARE TO REMAIN OUTSIDE OF THE SIDEWALK EXTENTS WHEREVER POSSIBLE.
- THE CONTRACTOR IS RESPONSIBLE FOR UTILITY COORDINATION PRIOR TO AND DURING THE CONSTRUCTION OF THE PROJECT. PRIOR TO BEGINNING CONSTRUCTION OPERATIONS WHICH MAY AFFECT EXISTING UTILITIES, A UTILITY COORDINATION MEETING IS TO BE HELD TO COORDINATE AND RESOLVE POTENTIAL UTILITY CONFLICTS AND TO COORDINATE SCHEDULES FOR NECESSARY RELOCATIONS OR ADJUSTMENTS. THE CONTRACTOR WILL BE REQUIRED TO ADJUST HIS CONSTRUCTION SCHEDULE OR OPERATIONS TO ALLOW THE UTILITY OWNERS TO ADJUST/RELOCATE THEIR FACILITIES. THE COST FOR UTILITY COORDINATION IS INCLUDED IN THE PAY ITEM FOR MOBILIZATION.

**PAVING, GRADING AND DRAINAGE NOTES:**

- THE CONTRACTOR SHALL BE RESPONSIBLE FOR SCHEDULING WITH THE CITY'S GEOTECHNICAL FIRM TO PROVIDE CERTIFIED MATERIAL TEST RESULTS TO THE ENGINEER OF RECORD PRIOR TO THE RELEASE OF FINAL CERTIFICATION BY THE ENGINEER. LAB TEST NEED TO HAVE A SEVEN DAY LEAD TIME NOTIFICATION TO THE CITY'S GEOTECHNICAL FIRM. TEST RESULTS MUST INCLUDE, BUT MAY NOT BE LIMITED TO, DENSITIES FOR SUBGRADE AND BASE DENSITIES AT UTILITY CROSSINGS, MANHOLES, INLETS, STRUCTURES. TEST SHALL INCLUDE ASPHALT GRADATION REPORTS, CONCRETE CYLINDERS, DENSITY TESTS SHALL BE PERFORMED AT THREE (3) LOCATIONS AROUND ANY STRUCTURE. BEGIN TESTING IN THE FIRST FOOT ABOVE THE BOTTOM OF THE STRUCTURE AND THEN EACH LIFT (12" MAX) TO WITHIN ONE FOOT OF THE FINISH GRADE.
- ALL INLETS AND PIPE SHALL BE PROTECTED DURING CONSTRUCTION TO PREVENT SILTATION IN THE DRAINAGE SYSTEMS BY WAY OF TEMPORARY PLUGS AND PLYWOOD OR PLASTIC COVERS OVER THE INLETS. THE ENTIRE DRAINAGE SYSTEMS SHALL BE CLEANED OF ALL DEBRIS PRIOR TO FINAL ACCEPTANCE.
- ALL PROPOSED ELEVATIONS REFER TO FINISHED GRADES.
- THE CONTRACTOR MUST OBTAIN A WATER USE PERMIT PRIOR TO CONSTRUCTION DEWATERING UNLESS THE WORK QUALIFIES FOR A PERMIT PURSUANT TO SUBSECTION 40E-20.061, F.A.C.
- CONTRACTOR TO VERIFY ALL EXISTING TIE-IN ELEVATIONS PRIOR TO FABRICATION/SHOP DRAWINGS OF PROPOSED STRUCTURES.

**SUB-CONSULTANTS**

**SURVEYOR**  
BETSY LINDSAY, INC.

**GEOTECHNICAL**  
ANDERSEN ANDRE CONSULTING ENGINEERS, Inc.

GEOTECHNICAL ENGINEERING EVALUATION  
NW EAST TORINO PARKWAY AND MIDWAY ROAD  
INTERSECTION IMPROVEMENT PROJECT  
PORT ST. LUCIE, ST. LUCIE COUNTY, FLORIDA  
AUGUST 7, 2022

**UTILITY COMPANIES**

48 HOURS BEFORE DIGGING CALL SUNSHINE STATE ON CALL CENTER.  
TOLL FREE 1-800-432-4770

FLORIDA POWER AND LIGHT - ROB MORRIS 772-223-4215

CITY OF PORT ST. LUCIE UTILITIES SYSTEMS DEPARTMENT  
LANEY SOUTHERLY 772-873-6400

COMCAST- ANTHONY SPRINGSTEEL 772-321-3425

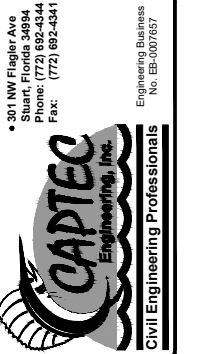
NEXT ERA ENERGY (GAS)  
RON MULLER 321-638-3424

AT&T- LUKE FOLKERTS 321-953-6172

CITY OF PORT ST. LUCIE TRAFFIC OPERATIONS DIVISION  
PAUL JOHNSON 772-871-5182

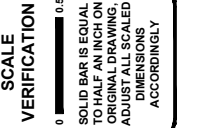
CITY OF PORT ST. LUCIE PUBLIC WORKS  
HEATH STOCKTON, PE, DIRECTOR 772-871-5100

ST. LUCIE COUNTY ROAD & BRIDGE DIVISION (TRAFFIC OPERATION)  
DAN ZRALLACK 772-462-2511



DATE:	8-15-22
DRAWN BY:	MDB
DESIGNED BY:	GA
CHECKED BY:	JWC
PROJECT NO.:	1813.30
HORIZ. SCALE:	
VERT. SCALE:	
CADD FILE:	

NO.	DATE	BY	REVISIONS
1	7/23	MDB	100% COMMENTS REVISIONS
2	7/23	MDB	100% SUBMITTAL



**NW EAST TORINO PARKWAY AND MIDWAY ROAD TURN LANE IMPROVEMENTS**  
CITY OF PORT ST. LUCIE, FLORIDA

**GENERAL NOTES**

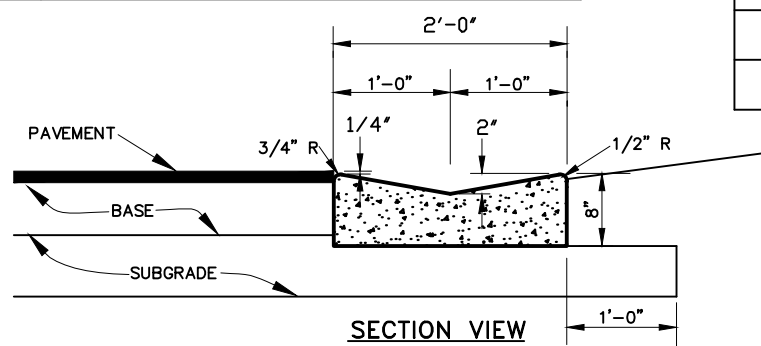
Joseph W. Capra  
301 N.W. Flagler Ave.  
Stuart, Florida 34994  
P.E. No. 37638

THIS DOCUMENT, TOGETHER WITH THE CONCEPTS AND DESIGNS PRESENTED HEREIN, AS AN INSTRUMENT OF SERVICE, IS INTENDED ONLY FOR THE SPECIFIC PURPOSE AND CLIENT FOR WHICH IT WAS PREPARED. REUSE OF AND IMPROPER RELIANCE ON THIS DOCUMENT WITHOUT WRITTEN AUTHORIZATION AND ADOPTION BY CAPTEC ENGINEERING, INC. SHALL BE WITHOUT LIABILITY TO CAPTEC ENGINEERING, INC.

Section 1	Project Name and location information:	"EAST TORINO PARKWAY AND MIDWAY ROAD TURN LANE CONTRACT PLANS" LOCATED NORTHBOUND AT NW EAST TORINO PKWY AT MIDWAY INTERSECTION
Section 2	Describe the nature of the construction activity:	ADDITION OF NORTHBOUND TURN LANE IN EAST DIRECTION
Section 3	Describe the intended sequence of major soil disturbing activities:	EARTHWORK ENTAILS EXCAVATION OF SOILS ADJACENT TO ROAD TO ALLOW NEW PAVEMENT & SHOULDER CONSTRUCTION. EMBANKMENT SLOPE TYING IN IMPROVEMENTS TO EXISTING GRADE.
Section 4	Total area of the site:	0.40 ACRE
Section 5	Total area of the site to be disturbed:	0.40 ACRE
Section 6	Existing data describing the soil or quality of any stormwater discharge from the site:	COMPLETED AUGER BORINGS ENCOUNTERED FINE SANDS (A-3) AND SLIGHTLY CLAYEY TO CLAYEY FINE SANDS (A-2-4) THROUGHOUT THE EXPLORED DEPTHS. RAINFALL AMOUNTS SHEET FLOW TO ADJACENT CANAL.
Section 7	Estimate the drainage area size for each discharge point:	0.69 ACRE DRAINAGE AREA
Section 8	Latitude and longitude of each discharge point and identify the receiving water or MSA for each discharge point:	N027° 22' 27.5" W080° 23' 16.0"
Section 9	Give a detailed description of all controls, Best Management Practices (BMPs) and measures that will be implemented at the construction site for each activity identified in the intended sequence of major soil disturbing activities section. Provide time frames in which the controls will be implemented. NOTE: All controls shall be consistent with performance standards for erosion and sediment control and stormwater treatment set forth in s. 62-40.432, F.A.C., the applicable Stormwater or Environmental Resource Permitting requirements of the Department or a Water Management District, and the guidelines contained in the State of Florida Erosion and Sediment Control Designer and Reviewer Manual, FDOT, FDEP, and any subsequent amendments.	
Section 10	Describe all temporary and permanent stabilization practices. Stabilization practices include temporary seeding, mulching, permanent seeding, geotextiles, sod stabilization, vegetative buffer strips, protection of trees, vegetative preservations, etc.	
Section 11	Describe all structural controls to be implemented to divert stormwater flow from exposed soils and structural practices to store flows, retain sediment on-site or in any other way limit stormwater runoff. These controls include silt fences, earth dikes, diversions, swales, sediment traps, check dams, subsurface drains, pipe slope drains, level spreaders, storm drain inlet protection, rock outlet protection, reinforced soil retaining systems, gabions, coagulating agents and temporary or permanent sediment basins.	
Section 12	Describe all sediment basins to be implemented for areas that will disturb 10 or more acres at one time. The sediment basins (or an equivalent alternative) should be able to provide 3,600 cubic feet of storage for each acre drained. Temporary sediment basins (or an equivalent alternative) are recommended for drainage areas under 10 acres.	
Section 13	Describe all permanent stormwater management controls such as, but not limited to, detention or retention systems or vegetated swales that will be installed during the construction process.	

Section 14	Waste disposal, this may include construction debris, chemicals, litter, and sanitary wastes:	All construction materials and debris will be placed in a dumpster and hauled off site to a landfill or other proper disposal site. No materials will be banded on site.
Section 15	Offsite vehicle tracking from construction entrances/exits:	Off site vehicle tracking of sediments and dust generation will be minimized via a rock construction entrance, street sweeping and the use of water to keep dust down.
Section 16	The proper application rates of all fertilizers, herbicides and pesticides used at the construction site:	Florida-friendly fertilizers and pesticides will be used at a minimum and in accordance with the manufacturer's suggested application rates.
Section 17	The storage, application, generation and migration of all toxic substances:	All paints and other chemicals will be stored in a locked covered shed.
Section 18	Other:	Port-o-lets will be placed away from storm sewer systems, storm inlet(s), surface waters and wetlands. No vehicle maintenance shall be conducted on-site. A washdown area shall be designated at all times and will not be located in any area that will allow for the discharge of polluted runoff.
Section 19	Provide a detailed description of the maintenance plan for all structural and non-structural controls to assure that they remain in good and effective operating condition.	
Section 20	Contractor shall provide routine maintenance of permanent and temporary sediment and erosion control features in accordance with the technical specifications or as follows, whichever is more stringent: • Silt fence shall be inspected at least weekly. Any required repairs shall be made immediately. Sediment deposits shall be removed when they reach approximately one-half the height of the barrier. • Maintenance shall be performed on the rock entrance when any void spaces are full of sediment. • Inlet(s)/outfalls shall be inspected immediately after each rain event and any required repairs to the filter inlets, silt fence, or filter fabric shall be performed immediately. • Bare areas of the site that were previously seeded shall be reseeded per manufacturer's instructions. • Mulch and sod that has been washed out shall be replaced immediately. • Maintain all other areas of the site with proper controls as necessary.	
Section 21	Identify and describe all sources of non-stormwater discharges as allowed by the FDEP NPDES Generic Permit for Stormwater Discharge from Large and Small Construction Activities.	N/A
Section 22	All contractor(s) and subcontractor(s) identified in the SWPPP must sign the following certification: "I certify under penalty of law that I understand, and shall comply with, the terms and conditions of the State of Florida Generic Permit for Stormwater Discharge from Large and Small Construction Activities and this Stormwater Pollution Prevention Plan prepared thereunder."	

Name	Title	Company Name, Address and Phone Number	Date



**NOTES:**

- Saw cut contraction joints on 10' centers max. within 48 hours after pouring curb.
- All materials and construction shall be in accordance with FDOT Specifications Section 520 and FDOT Standard Plans index number 520-001

**2'-0" VALLEY GUTTER**  
N.T.S.

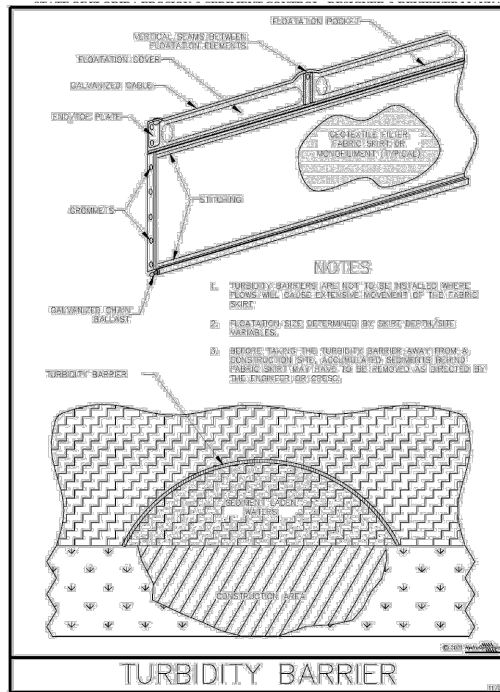


Figure V-44: Illustration of a Turbidity Barrier Curtain

V-15  
CHAPTER 4: BEST MANAGEMENT PRACTICES FOR EROSION AND SEDIMENTATION CONTROL

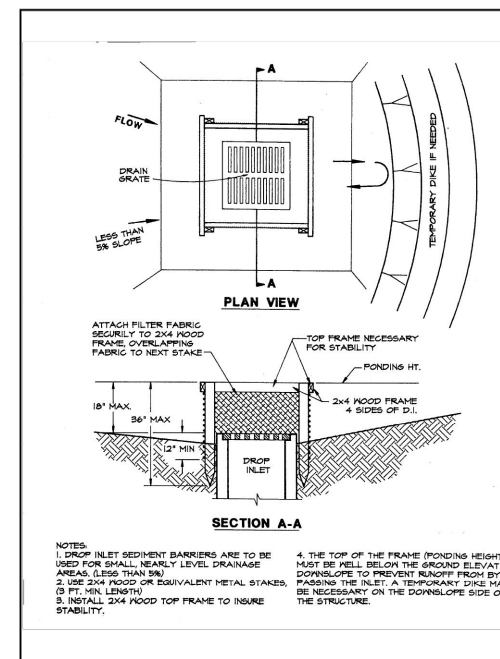


Figure 4.5a: Silt Fence Drop Inlet Sediment Barrier

STATE OF FLORIDA EROSION & SEDIMENT CONTROL - DESIGNER & REVIEWER MANUAL

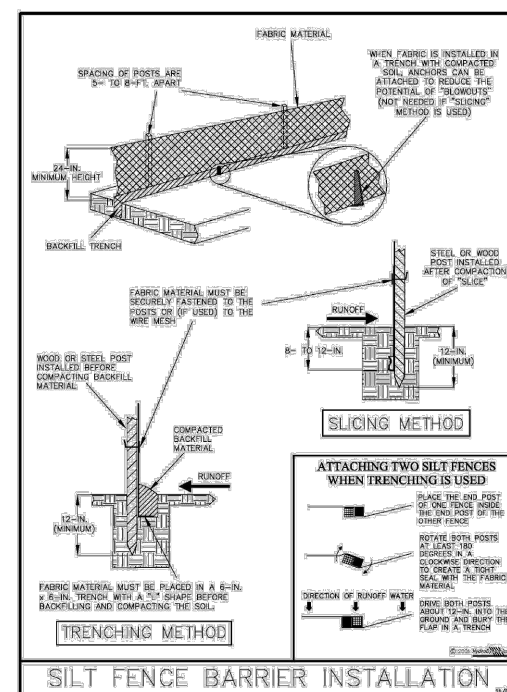


Figure V-40: Illustration of a Silt Fence Barrier

V-7  
STATE OF FLORIDA EROSION & SEDIMENT CONTROL - DESIGNER & REVIEWER MANUAL

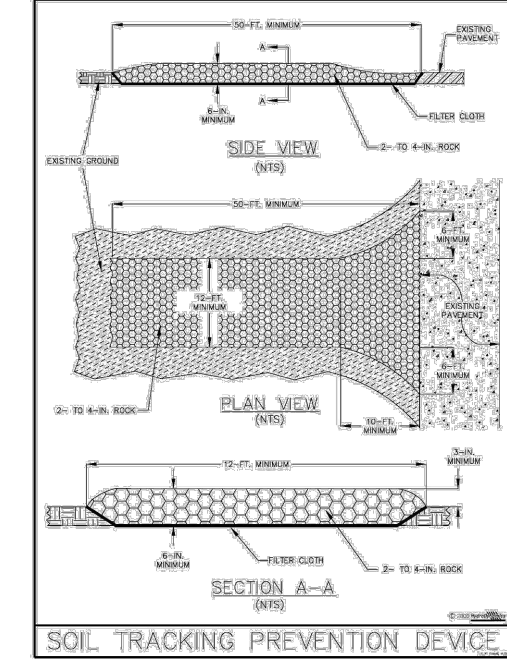


Figure V-52: Illustration of a Soil Tracking Prevention Device

301 NW Flagler Ave  
Phone: (772) 892-4344  
Fax: (772) 892-4341

**CAPTEC**  
Engineering, Inc.  
Civil Engineering Professionals

DATE: 8-15-22  
DRAWN BY: MJB  
DESIGNED BY: JWB  
CHECKED BY: JWC  
PROJECT NO.: 1813.30  
HORIZ. SCALE:  
VERT. SCALE:  
CADD FILE: 1813.30.DETAILS

NO.	DATE	BY	REVISIONS
2	2/7/23	MJB	100% COMMENTS REVISIONS
1	7/2/23	MJB	100% SUBMITTAL

SCALE  
VERIFICATION  
0 0.5 1

SOLID BAR IS EQUAL TO HALF AN INCH ON ORIGINAL DRAWING. ALL DIMENSIONS ACCORDINGLY.

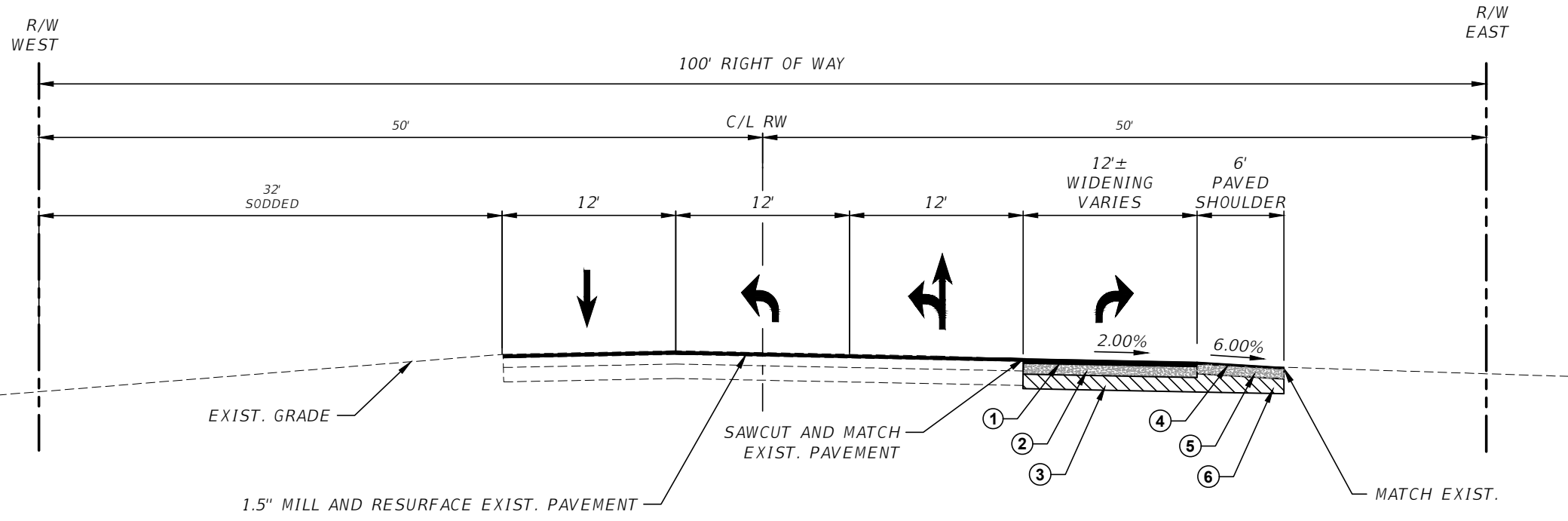
**NW EAST TORINO PARKWAY AND MIDWAY ROAD TURN LANE IMPROVEMENTS**  
CITY OF PORT ST. LUCIE, FLORIDA

**SWPPP & DETAILS**

Joseph W. Capra  
301 N.W. Flagler Ave.  
Stuart, Florida 34994  
P.E. No. 37638

Printed Date:  
JOB No.: 1813.30  
SHEET  
4 OF 12

THIS DOCUMENT, TOGETHER WITH THE CONCEPTS AND DESIGNS PRESENTED HEREIN, AS AN INSTRUMENT OF SERVICE, IS INTENDED ONLY FOR THE SPECIFIC PURPOSE AND CLIENT FOR WHICH IT WAS PREPARED. REUSE OF AND IMPROPER RELIANCE ON THIS DOCUMENT WITHOUT WRITTEN AUTHORIZATION AND ADOPTION BY CAPTEC ENGINEERING, INC. SHALL BE WITHOUT LIABILITY TO CAPTEC ENGINEERING, INC.



**TYPICAL SECTION  
NW EAST TORINO PKWY**

TRAFFIC DATA  
 TORINO PARKWAY  
 DESIGN SPEED = 45 MPH  
 POSTED SPEED = 40 MPH

- | <u>WIDENING</u>   | <u>SHOULDER</u>   |
|---|---|
| ① FIRST LIFT 1 1/2" / FINAL LIFT 1 1/2" TYPE SP-12.5 / SP-9.5 LEVEL C ASPHALT | ④ 1 1/2" TYPE SP-9.5 (TRAFFIC C)                                    |
| ② OPTIONAL BASE GROUP 9 (MIN. LBR 100) (6" MIN. / 10" GEOTECH SUGGESTION)     | ⑤ OPTIONAL BASE GROUP 1 (MIN. LBR 100)                              |
| ③ 12" TYPE 'B' STABILIZATION (MIN. LBR 40) STRUCTURAL NUMBER = 4.08           | ⑥ 12" TYPE 'B' STABILIZATION (MIN. LBR 40) STRUCTURAL NUMBER = 2.34 |

- NOTES
- AFTER EXCAVATION FOR WIDENING AND SHOULDER CONSTRUCTION, SUBGRADE SHALL BE COMPACTED TO 100% STANDARD PROCTOR MAXIMUM DRY DENSITY (AASHTO T-99) TO DEPTH OF 12"
  - SEE PLAN AND/OR CROSS SECTION SHEETS FOR DIMENSIONS ELEVATIONS AND SLOPES INDICATED AS VARIES.
  - ALL DISTURBED AREAS WITHIN RIGHT OF WAY SHALL BE SODDED USING COMMON BAHIA SOD EXCEPT WHEN MATCHING EXISTING.

301 NW Flagler Ave.  
 Stuart, Florida 34994  
 Phone: (772) 892-4344  
 Fax: (772) 892-4341

**CAPTEC Engineering, Inc.**  
 Civil Engineering Professionals

DATE: 8-15-22	DRN BY: MDB	DESIGNED BY: GA	CHECKED BY: JWC	PROJECT NO.: 1813.30	VERT. SCALE: N/A	CADD FILE:
---------------	-------------	-----------------	-----------------	----------------------	------------------	------------

NO.	DATE	BY	REVISIONS
2	2/7/23	MDB	100% COMMENTS REVISIONS
1	1/2/23	MDB	100% SUBMITTAL

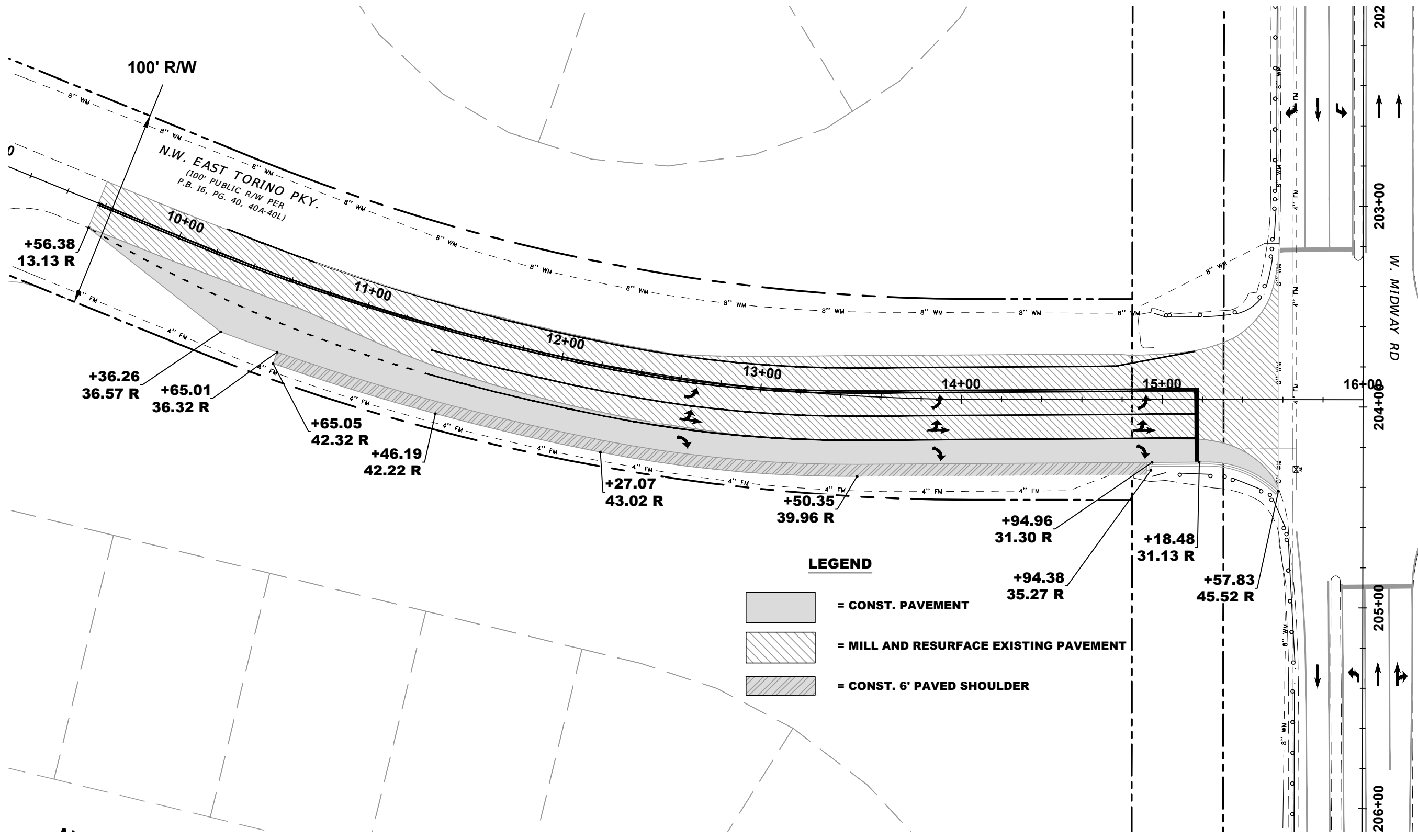
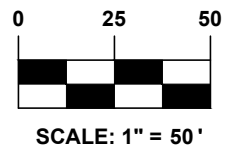
SCALE VERIFICATION  
 0 0.5  
 SOLID BAR IS EQUAL TO HALF AN INCH ON DIMENSIONS  
 ADJUST ALL SCALED DIMENSIONS ACCORDINGLY

**NW EAST TORINO PARKWAY AND MIDWAY ROAD TURN LANE IMPROVEMENTS**  
 CITY OF PORT ST. LUCIE, FLORIDA

**TYPICAL SECTION**

Joseph W. Capra  
 301 N.W. Flagler Ave.  
 Stuart, Florida 34994  
 P.E. No. 37638


THIS DOCUMENT, TOGETHER WITH THE CONCEPTS AND DESIGNS PRESENTED HEREIN, IS AN INSTRUMENT OF SERVICE. IT IS INTENDED ONLY FOR THE SPECIFIC PURPOSE AND CLIENT FOR WHICH IT WAS PREPARED. REUSE OF AND IMPROPER RELIANCE ON THIS DOCUMENT WITHOUT WRITTEN AUTHORIZATION AND ADOPTION BY CAPTEC ENGINEERING, INC. SHALL BE WITHOUT LIABILITY TO CAPTEC ENGINEERING, INC.



**LEGEND**

- = CONST. PAVEMENT
- = MILL AND RESURFACE EXISTING PAVEMENT
- = CONST. 6' PAVED SHOULDER

301 N.W. Flagler Ave.  
Stuart, Florida 34994  
Phone: (772) 892-4344  
Fax: (772) 892-4341



**CAPTEC**  
Engineering, Inc.  
Civil Engineering Professionals

DATE: 8-15-22  
 DRAWN BY: MDB  
 DESIGNED BY: GA  
 CHECKED BY: JWC  
 PROJECT NO.: 1813.30  
 HORIZ. SCALE: 1" = 50'  
 VERT. SCALE: 1" = 50'  
 CADD FILE:

NO.	DATE	BY	REVISIONS
2	2/7/23	MDB	100% COMMENTS REVISIONS
1	1/2/23	MDB	100% SUBMITTAL

**SCALE VERIFICATION**

0 0.5

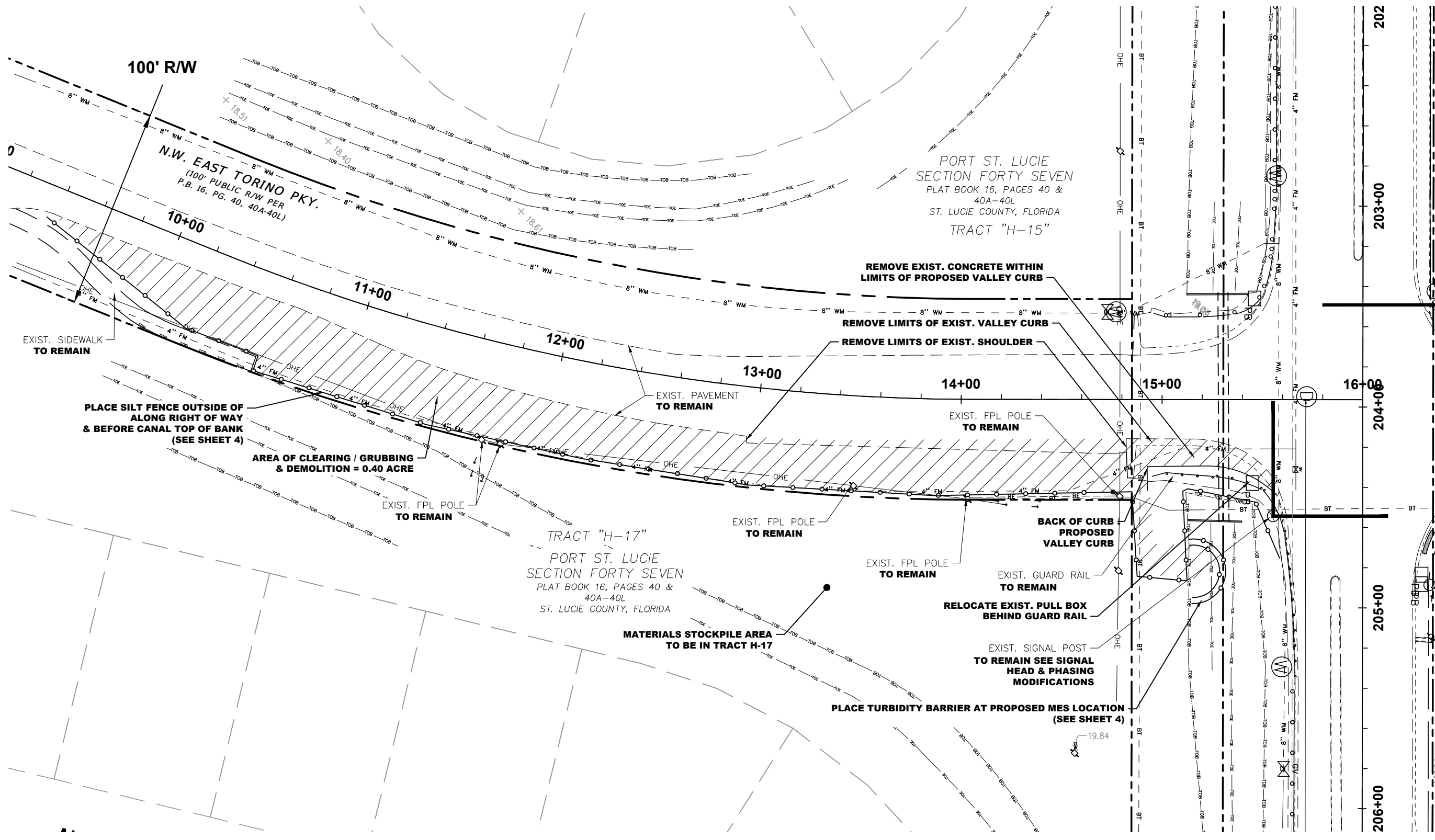
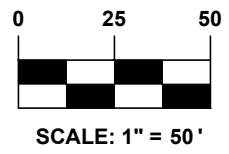
SOLID BAR IS EQUAL TO HALF AN INCH ON DRAWING. ALL DIMENSIONS ADJUST ALL SCALED DIMENSIONS ACCORDINGLY.

**NW EAST TORINO PARKWAY AND MIDWAY ROAD TURN LANE IMPROVEMENTS**  
 CITY OF PORT ST. LUCIE, FLORIDA

**PROJECT LAYOUT**

Joseph W. Capra  
 301 N.W. Flagler Ave.  
 Stuart, Florida 34994  
 P.E. No. 37638

THIS DOCUMENT, TOGETHER WITH THE CONCEPTS AND DESIGNS PRESENTED HEREIN, IS AN INSTRUMENT OF SERVICE. IT IS INTENDED ONLY FOR THE SPECIFIC PURPOSE AND CLIENT FOR WHICH IT WAS PREPARED. REUSE OF AND IMPROPER RELIANCE ON THIS DOCUMENT WITHOUT WRITTEN AUTHORIZATION AND ADOPTION BY CAPTEC ENGINEERING, INC. SHALL BE WITHOUT LIABILITY TO CAPTEC ENGINEERING, INC.



THIS DOCUMENT, TOGETHER WITH THE CONCEPTS AND DESIGNS PRESENTED HEREIN, IS INTENDED ONLY FOR THE SPECIFIC PURPOSE AND CLIENT FOR WHICH IT WAS PREPARED. REUSE OF AND MODIFICATION OF THIS DOCUMENT WITHOUT WRITTEN AUTHORIZATION AND ADOPTION BY CAPTEC ENGINEERING, INC. SHALL BE WITHOUT LIABILITY TO CAPTEC ENGINEERING, INC.

301 N.W. Flagler Ave.  
 Stuart, Florida 34994  
 Phone: (772) 892-4344  
 Fax: (772) 892-4341

**CAPTEC**  
 Engineering, Inc.  
 Civil Engineering Professionals

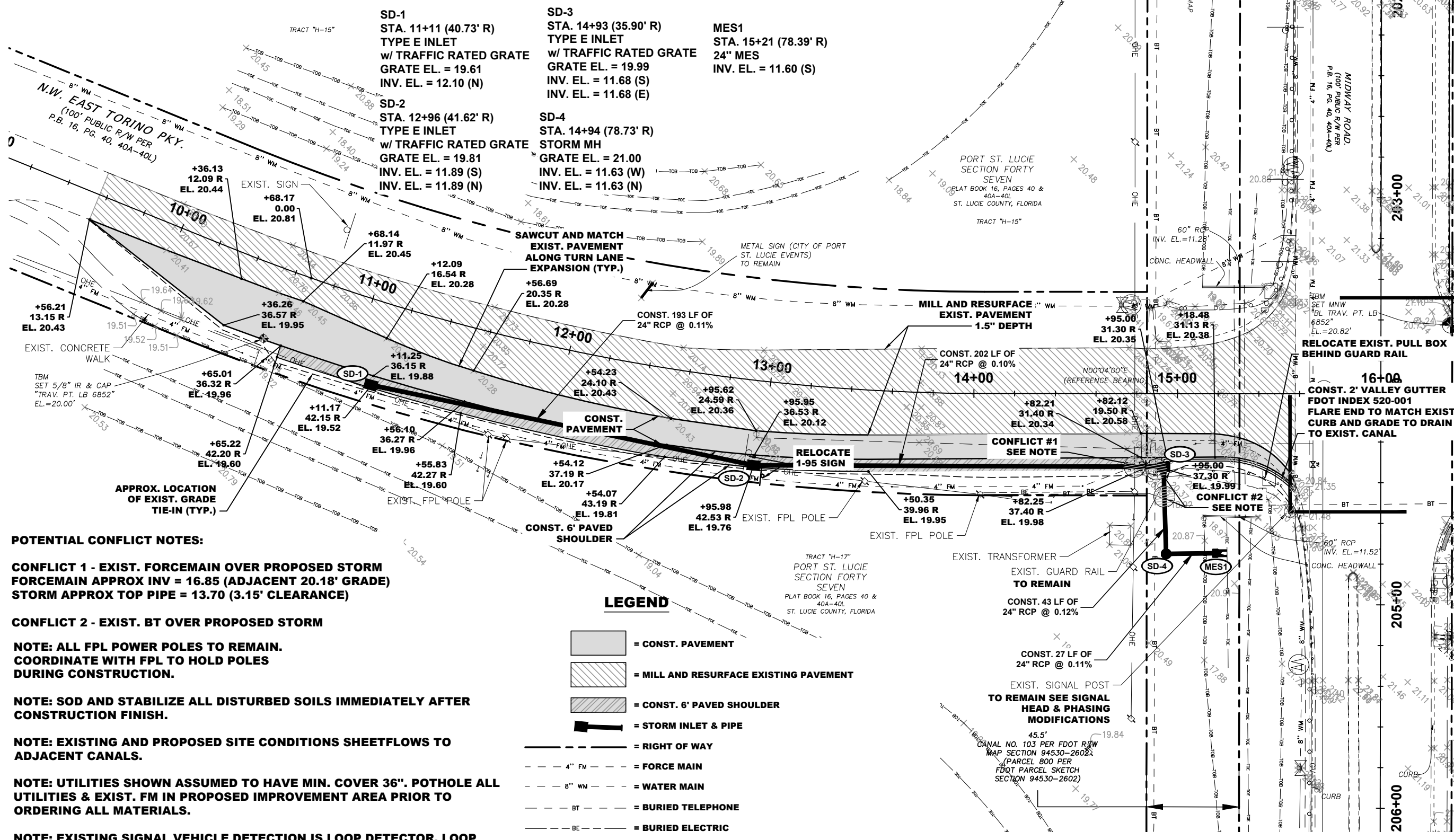
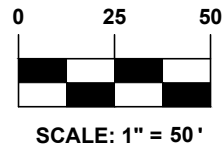
DATE:	8-15-22
DRAWN BY:	MDB
DESIGNED BY:	GA
CHECKED BY:	JWC
PROJECT NO.:	1813.30
HORIZ. SCALE:	1" = 50'
VERT. SCALE:	1" = 50'
CADD FILE:	

NO.	DATE	BY	REVISIONS
2	2/7/23	MDB	100% COMMENTS REVISIONS
1	7/2/23	MDB	100% SUBMITTAL

SCALE	0.5
VERIFICATION	
SOLID BAR IS EQUAL TO HALF AN INCH ON ADJUST ALL SCALED DIMENSIONS ACCORDINGLY	

**NW EAST TORINO PARKWAY AND MIDWAY ROAD TURN LANE IMPROVEMENTS**  
 CITY OF PORT ST. LUCIE, FLORIDA  
**DEMOLITION & EROSION CONTROL PLAN**

Joseph W. Capra  
 301 N.W. Flagler Ave.  
 Stuart, Florida 34994  
 P.E. No. 37638



**POTENTIAL CONFLICT NOTES:**

**CONFLICT 1 - EXIST. FORCEMAIN OVER PROPOSED STORM**  
**FORCEMAIN APPROX INV = 16.85 (ADJACENT 20.18' GRADE)**  
**STORM APPROX TOP PIPE = 13.70 (3.15' CLEARANCE)**

**CONFLICT 2 - EXIST. BT OVER PROPOSED STORM**

**NOTE: ALL FPL POWER POLES TO REMAIN.**  
**COORDINATE WITH FPL TO HOLD POLES**  
**DURING CONSTRUCTION.**

**NOTE: SOD AND STABILIZE ALL DISTURBED SOILS IMMEDIATELY AFTER**  
**CONSTRUCTION FINISH.**

**NOTE: EXISTING AND PROPOSED SITE CONDITIONS SHEETFLOWS TO**  
**ADJACENT CANALS.**

**NOTE: UTILITIES SHOWN ASSUMED TO HAVE MIN. COVER 36\"/>**

**NOTE: EXISTING SIGNAL VEHICLE DETECTION IS LOOP DETECTOR. LOOP**  
**DETECTOR WILL NEED TO BE REPLACED / ADJUSTED FOR ADDITIONAL TURN**  
**LANE.**

**LEGEND**

- = CONST. PAVEMENT
- = MILL AND RESURFACE EXISTING PAVEMENT
- = CONST. 6' PAVED SHOULDER
- = STORM INLET & PIPE
- = RIGHT OF WAY
- = FORCE MAIN
- = WATER MAIN
- = BURIED TELEPHONE
- = BURIED ELECTRIC
- = OVERHEAD ELECTRIC
- = TOP OF BANK
- = TOE OF SLOPE

301 NW Flagler Ave.  
 Ft. Pierce, FL 34934  
 Phone: (772) 892-4344  
 Fax: (772) 892-4341

Engineering Business  
 No. EB-007857

DATE:	8-15-22
DRAWN BY:	MDB
DESIGNED BY:	GA
CHECKED BY:	JWC
PROJECT NO.:	1813.30
HORIZ. SCALE:	1" = 50'
VERT. SCALE:	1" = 50'
CADD FILE:	

NO.	DATE	BY	REVISIONS
1	11/23	MDB	100% SUBMITTAL
2	2/7/23	MDB	100% COMMENTS REVISIONS

SCALE	0.5
VERIFICATION	
SOLID BAR IS EQUAL TO HALF AN INCH ON ADJUST ALL SCALED DIMENSIONS ACCORDINGLY	

**PLAN**

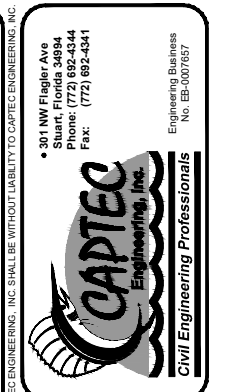
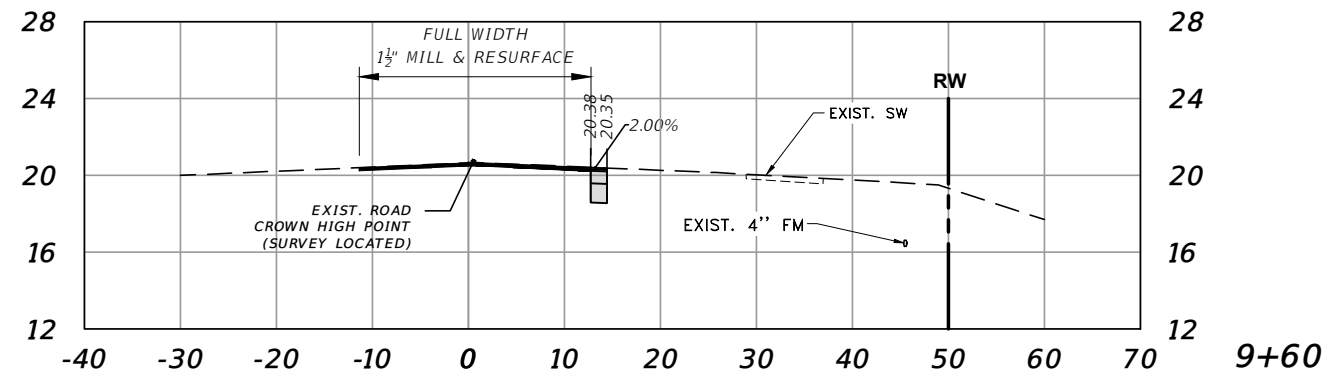
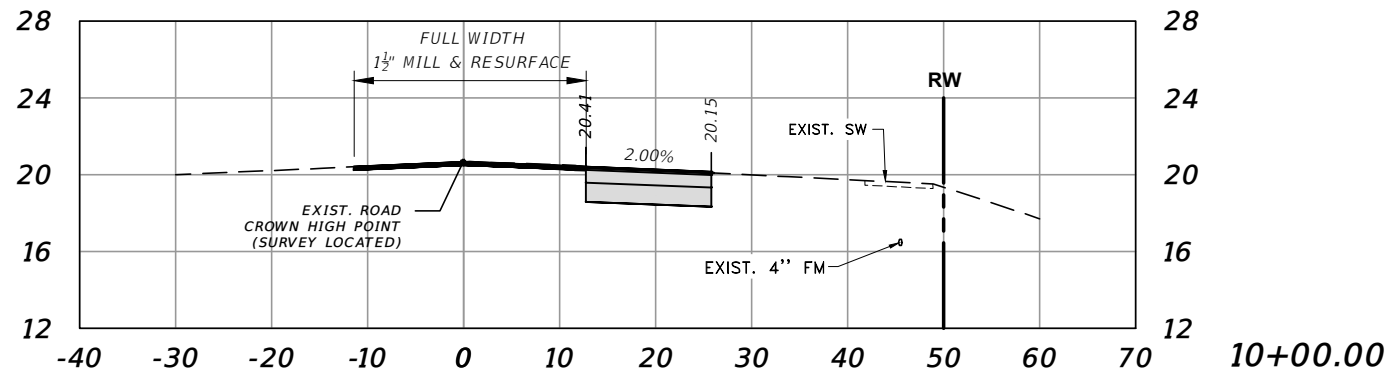
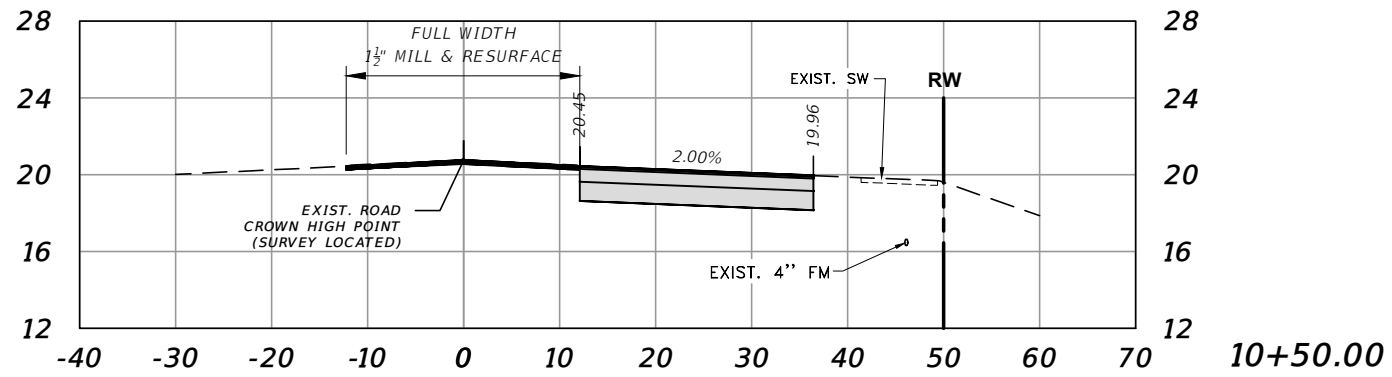
**NW EAST TORINO PARKWAY AND MIDWAY ROAD TURN LANE IMPROVEMENTS**  
 CITY OF PORT ST. LUCIE, FLORIDA

Joseph W. Capra  
 301 N.W. Flagler Ave.  
 Stuart, Florida 34994  
 P.E. No. 37638

THIS DOCUMENT, TOGETHER WITH THE CONCEPTS AND DESIGNS PRESENTED HEREIN, IS AN INSTRUMENT OF SERVICE. IT IS INTENDED ONLY FOR THE SPECIFIC PURPOSE AND CLIENT FOR WHICH IT WAS PREPARED. REUSE OF AND MODIFICATION OF THIS DOCUMENT WITHOUT WRITTEN AUTHORIZATION AND ADOPTION BY CAPTEC ENGINEERING, INC. SHALL BE WITHOUT LIABILITY TO CAPTEC ENGINEERING, INC.



**NOTE: UTILITIES SHOWN ASSUMED TO HAVE MIN. COVER 36". CONTRACTOR TO POTHOLE EXIST. FM PRIOR TO STORM PIPE CONSTRUCTION. POTHOLES SHALL TAKE PLACE PRIOR TO ORDER OF MATERIALS.**



DATE: 8-15-22  
 DRAWN BY: MDB  
 DESIGNED BY: GA  
 CHECKED BY: JWC  
 PROJECT No.: 1813.30  
 HORIZ. SCALE: 1" = 20'  
 VERT. SCALE: 1" = 10'  
 CADD FILE:

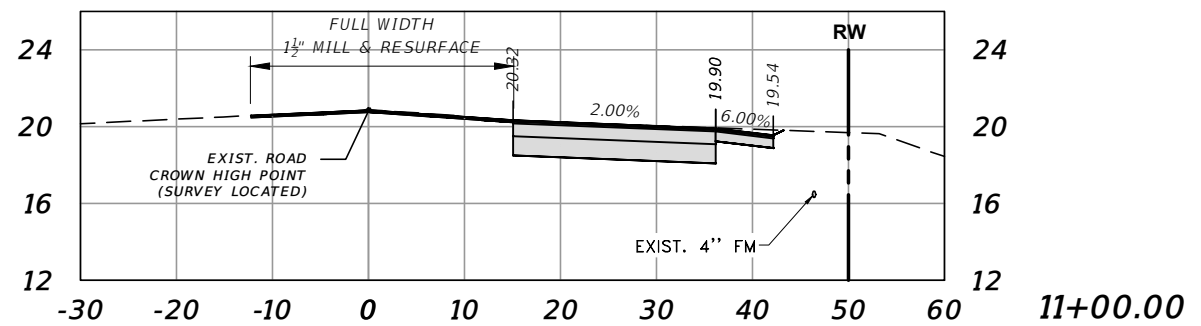
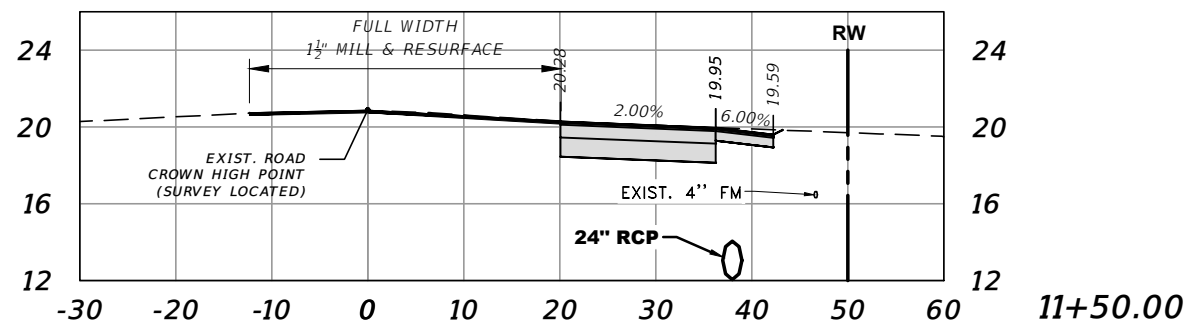
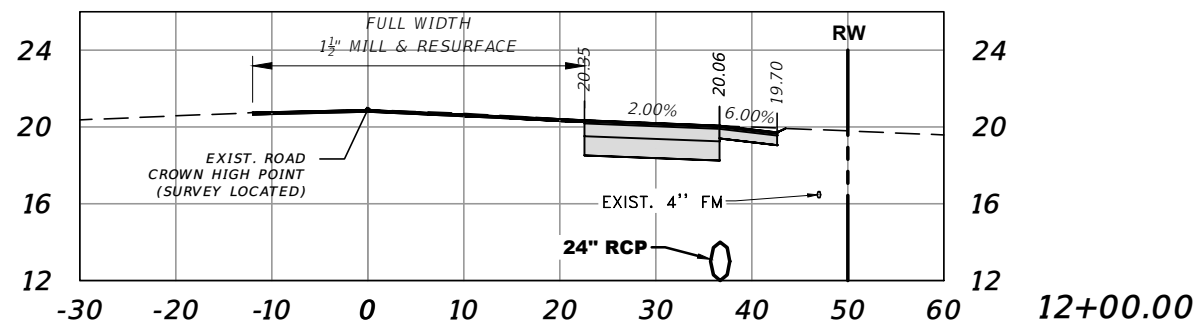
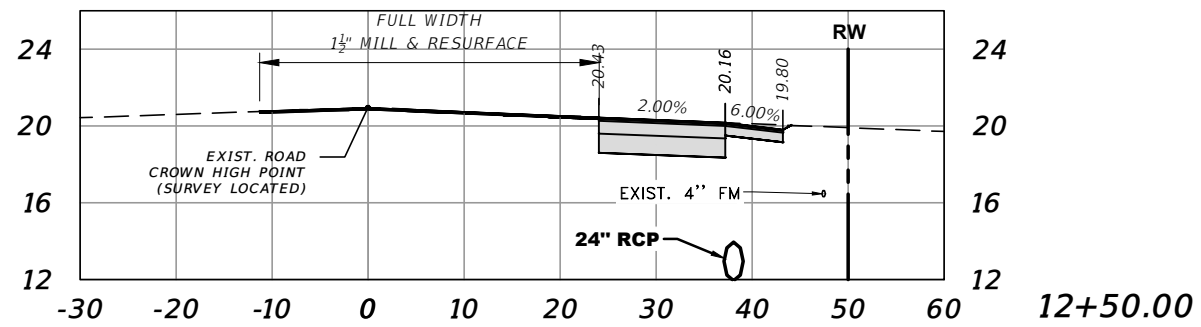
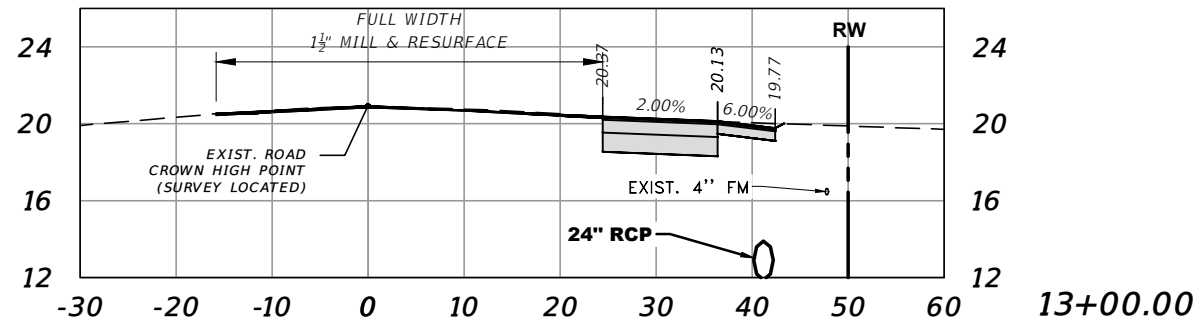
NO.	DATE	BY	REVISIONS
2	2/7/23	MDB	100% COMMENTS REVISIONS
1	1/2/23	MDB	100% SUBMITTAL

**SCALE VERIFICATION**  
 0 0.5  
 SOLID BAR IS EQUAL TO HALF AN INCH ON DRAWING. ALL DIMENSIONS ADJUST ALL SCALED DIMENSIONS ACCORDINGLY

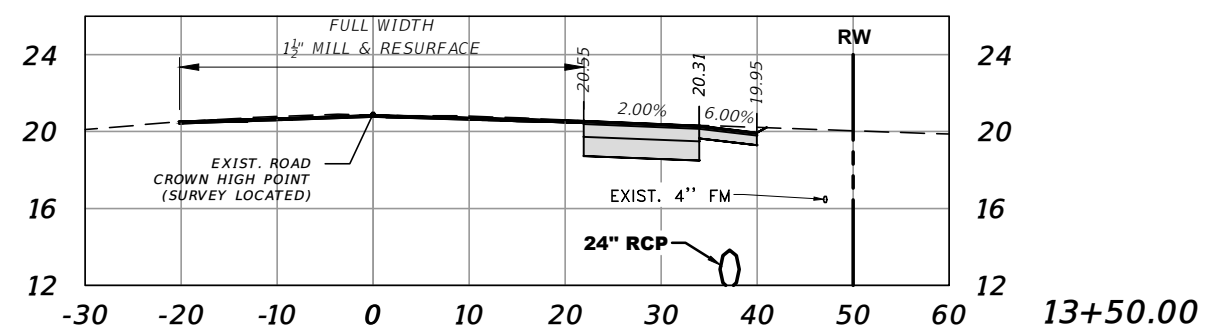
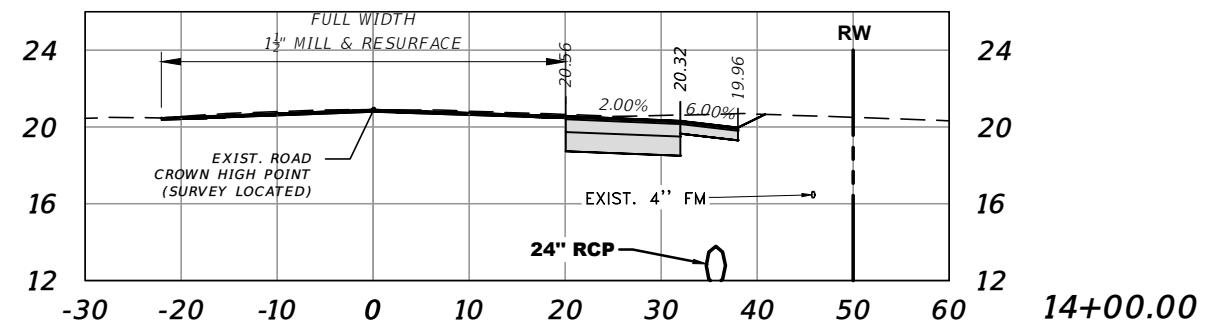
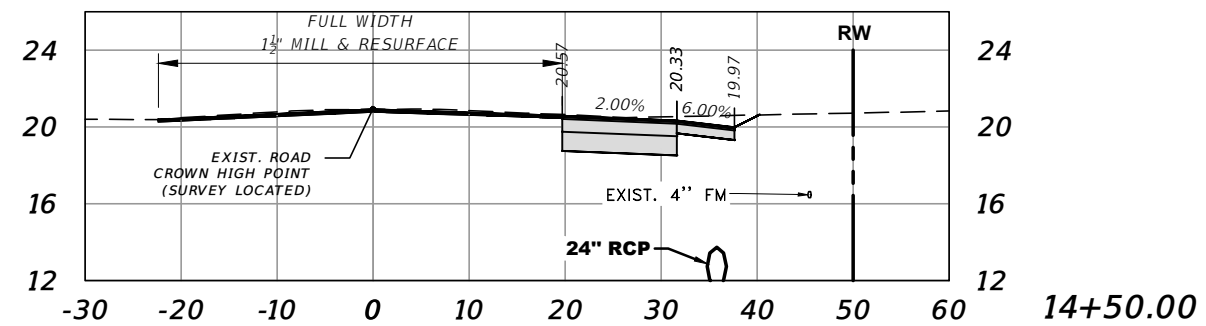
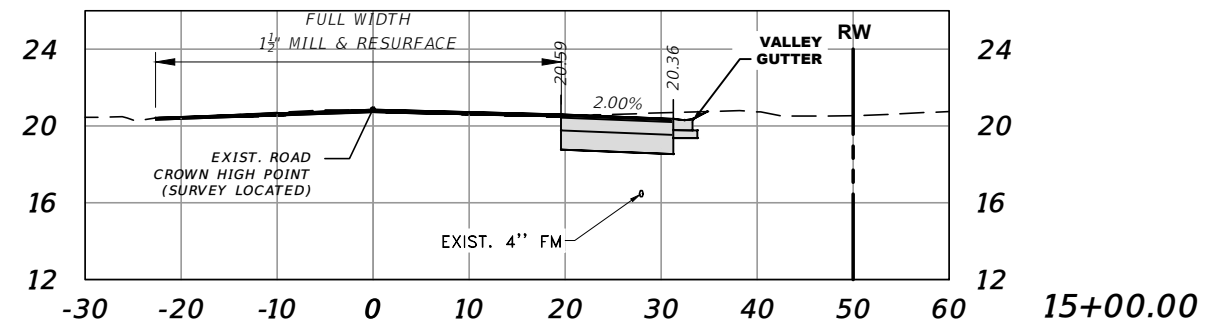
**NW EAST TORINO PARKWAY AND MIDWAY ROAD TURN LANE IMPROVEMENTS**  
 CITY OF PORT ST. LUCIE, FLORIDA  
**CROSS SECTIONS**

Joseph W. Capra  
 301 N.W. Flagler Ave.  
 Stuart, Florida 34994  
 P.E. No. 37638

THIS DOCUMENT, TOGETHER WITH THE CONCEPTS AND DESIGNS PRESENTED HEREIN, IS AN INSTRUMENT OF SERVICE. IT IS INTENDED ONLY FOR THE SPECIFIC PURPOSE AND CLIENT FOR WHICH IT WAS PREPARED. REUSE OF AND IMPROPER RELIANCE ON THIS DOCUMENT WITHOUT WRITTEN AUTHORIZATION AND ADOPTION BY CAPTEC ENGINEERING, INC. SHALL BE WITHOUT LIABILITY TO CAPTEC ENGINEERING, INC.



**NOTE: UTILITIES SHOWN ASSUMED TO HAVE MIN. COVER 36\"/>**



301 NW Flagler Ave.  
 Stuart, Florida 34994  
 Phone: (772) 892-4344  
 Fax: (772) 892-4341

**CAPTEC**  
 Engineering, Inc.  
 Civil Engineering Professionals

Engineering Business  
 No. EB-007857

DATE: 8-15-22  
 DRAWN BY: MDB  
 DESIGNED BY: GA  
 CHECKED BY: JWC  
 PROJECT NO.: 1813.30  
 HORIZ. SCALE: 1" = 20'  
 VERT. SCALE: 1" = 10'  
 CAD FILE:

NO.	DATE	BY	REVISIONS
2	2/7/23	MDB	100% COMMENTS REVISIONS
1	1/2/23	MDB	100% SUBMITTAL

SCALE VERIFICATION

0.5  
 1  
 2

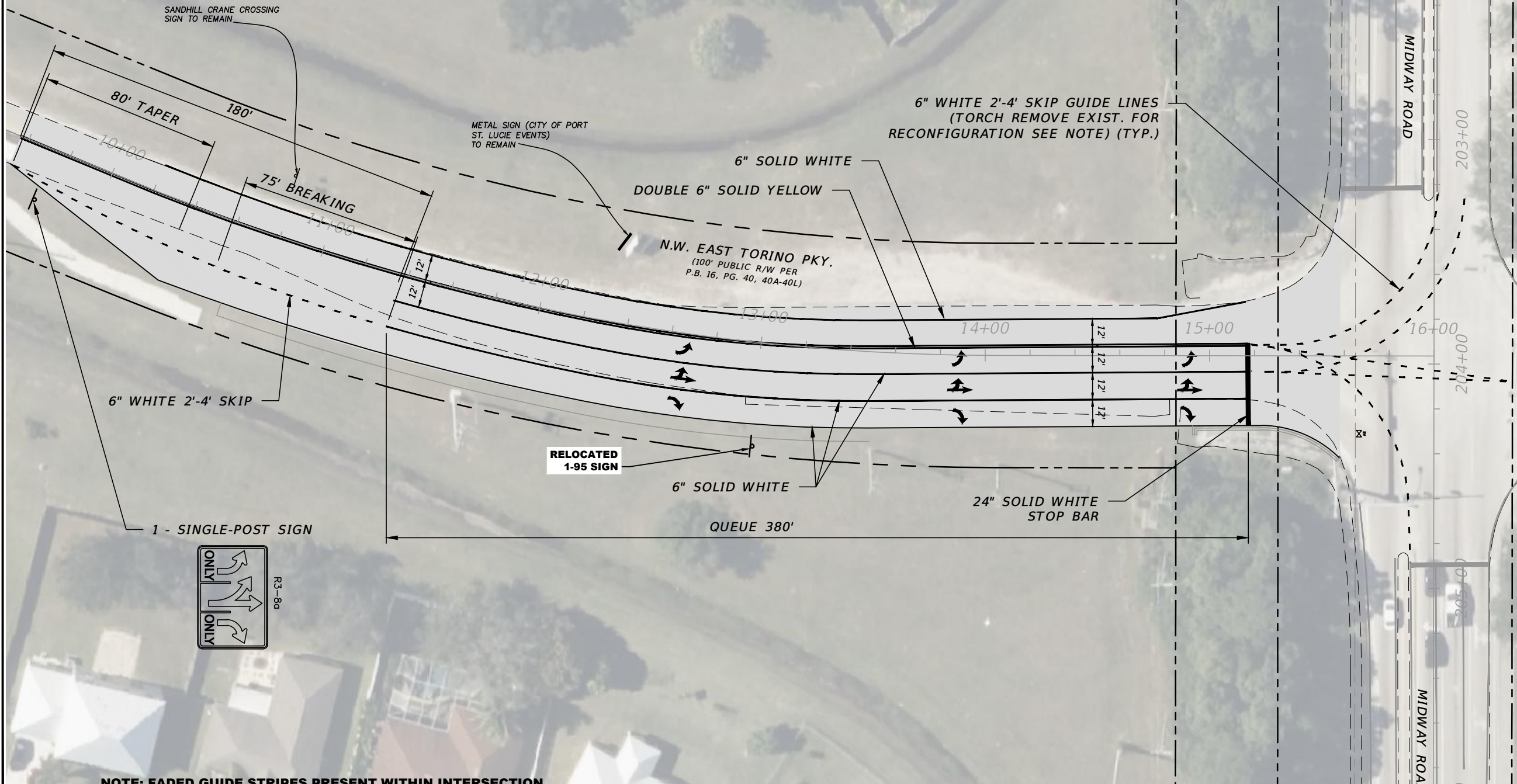
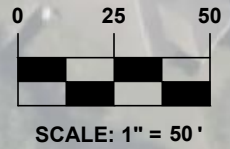
SOLID BAR IS EQUAL TO HALF AN INCH ON DIMENSIONS  
 TO ADJUST ALL SCALED DIMENSIONS ACCORDINGLY

**NW EAST TORINO PARKWAY AND MIDWAY ROAD TURN LANE IMPROVEMENTS**  
 CITY OF PORT ST. LUCIE, FLORIDA

**CROSS SECTIONS**

Joseph W. Capra  
 301 N.W. Flagler Ave.  
 Stuart, Florida 34994  
 P.E. No. 37638

THIS DOCUMENT, TOGETHER WITH THE CONCEPTS AND DESIGNS PRESENTED HEREIN, IS AN INSTRUMENT OF SERVICE. IT IS INTENDED ONLY FOR THE SPECIFIC PURPOSE AND CLIENT FOR WHICH IT WAS PREPARED. REUSE OF AND IMPROPER RELIANCE ON THIS DOCUMENT WITHOUT WRITTEN AUTHORIZATION AND ADOPTION BY CAPTEC ENGINEERING, INC. SHALL BE WITHOUT LIABILITY TO CAPTEC ENGINEERING, INC.



**NOTE: FADED GUIDE STRIPES PRESENT WITHIN INTERSECTION. COORDINATE WITH CITY OF PSL FOR DIRECTION ON TORCH REMOVE / RESTRIPE GUIDE LINES.**

**NOTE: EXISTING SIGNAL VEHICLE DETECTION IS LOOP DETECTOR. LOOP DETECTOR WILL NEED TO BE REPLACED / ADJUSTED FOR ADDITIONAL TURN LANE.**

301 NW Flagler Ave.  
Stuart, Florida 34994  
Phone: (772) 892-4344  
Fax: (772) 892-4341

**CAPTEC**  
Engineering, Inc.  
Civil Engineering Professionals

DATE: 8-15-22

DRAWN BY: MDB  
DESIGNED BY: GA  
CHECKED BY: JWC  
PROJECT NO.: 1813.30  
HORIZ. SCALE: 1" = 50'  
VERT. SCALE: 1" = 50'  
CADD FILE:

NO.	DATE	BY	REVISIONS
2	2/7/23	MDB	100% COMMENTS REVISIONS
1	1/2/23	MDB	100% SUBMITTAL

SCALE VERIFICATION

0 0.5 1

SOLID BAR IS EQUAL TO HALF AN INCH ON DRAWING. ALL DIMENSIONS ADJUST ALL SCALED ACCORDINGLY

**NW EAST TORINO PARKWAY AND MIDWAY ROAD TURN LANE IMPROVEMENTS**  
CITY OF PORT ST. LUCIE, FLORIDA

**PAVEMENT MARKING & SIGNAGE**

Joseph W. Capra  
301 N.W. Flagler Ave.  
Stuart, Florida 34994  
P.E. No. 37638

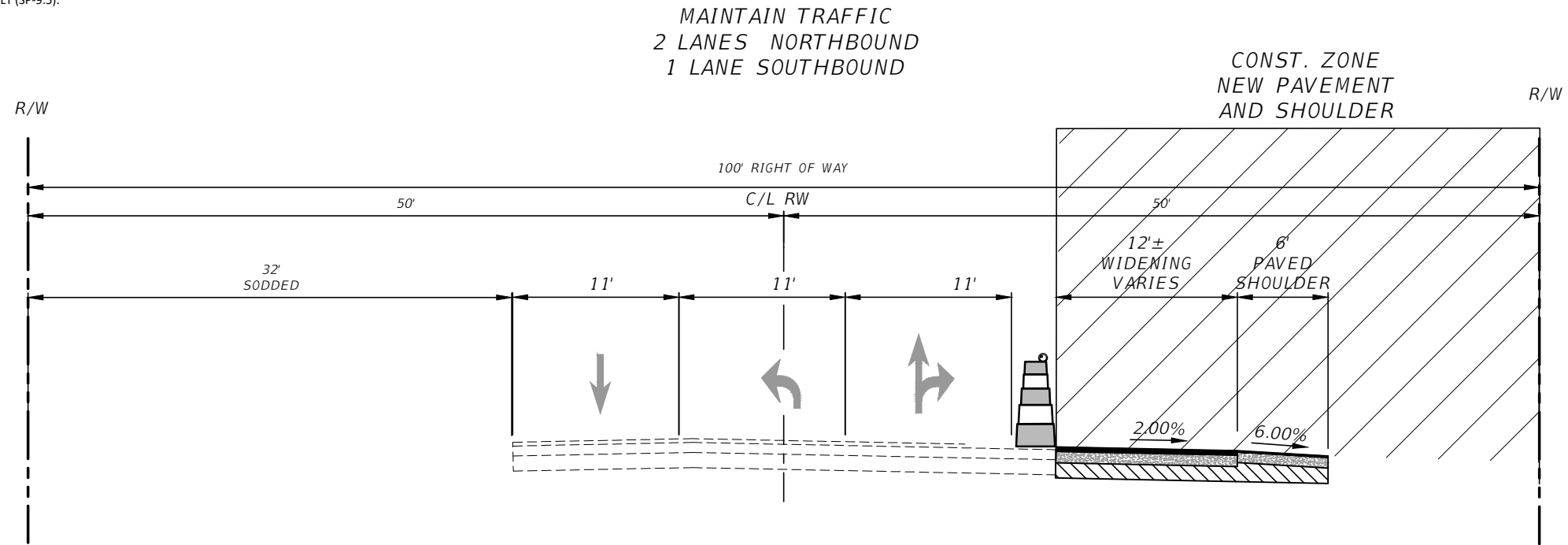
THIS DOCUMENT, TOGETHER WITH THE CONCEPTS AND DESIGNS PRESENTED HEREIN, IS AN INSTRUMENT OF SERVICE. IT IS INTENDED ONLY FOR THE SPECIFIC PURPOSE AND CLIENT FOR WHICH IT WAS PREPARED. REUSE OF AND IMPROPER RELIANCE ON THIS DOCUMENT WITHOUT WRITTEN AUTHORIZATION AND ADOPTION BY CAPTEC ENGINEERING, INC. SHALL BE WITHOUT LIABILITY TO CAPTEC ENGINEERING, INC.

- MAINTENANCE OF TRAFFIC MUST COMPLY WITH FDOT INDEX 102-600 SERIES DESIGN STANDARDS.
- IF CONTRACTOR DEVIATES FROM FDOT STANDARD MAINTENANCE OF TRAFFIC STANDARDS THEN THE CONTRACTOR SHALL SUPPLY A SIGNED AND SEALED LOCALIZED TRAFFIC CONTROL PLAN 2 WEEKS PRIOR TO COMMENCING CONSTRUCTION. NO ROAD CLOSURES ARE ANTICIPATED. ANY PROPOSED LANE CLOSURE REQUESTS MUST BE SUBMITTED FOUR WEEKS IN ADVANCE.
- PER FDOT INDEX 102-600, ANY DROP-OFF CONDITION THAT IS CREATED AND RESTORED WITHIN THE SAME WORK PERIOD WILL NOT BE SUBJECT TO THE USE OF BARRIERS. HOWEVER, WARNING DEVICES WILL BE REQUIRED.
- SEQUENCE OF CONSTRUCTION
  - BEGIN MAINTENANCE OF TRAFFIC.
  - INSTALL TEMPORARY STRIPING FOR 11' WIDE LANES (1 SOUTHBOUND AND 2 NORTHBOUND LEFT AND RIGHT TURNING LANES)
  - ADJUST UTILITIES AS REQUIRED / CONSTRUCT STORM PIPE & INLETS.
  - CLEAR AND GRUB, REMOVE EXISTING NORTHBOUND SHOULDER.
  - EXCAVATE FROM EDGE OF ROAD TO EDGE OF PROPOSED SHOULDER DOWN TO SUBGRADE. COMPACT SUBGRADE, NOTING POOR SOIL CONDITIONS AND REMEDIATION THEREOF AS REQUIRED.
  - INSTALL CURB/GUTTER.
  - PLACE AND COMPACT SUB-BASE MATERIAL IN 2 LIFTS.
  - PLACE AND COMPACT BASE IN 2 LIFTS (OPTIONAL BASE GROUP 9)
  - PLACE AND COMPACT 1½" ASPHALTIC STRUCTURAL COURSE (SP-12.5)
  - MILL ROADWAY ENTIRE WIDTH OF PROJECT AREA (1½" THICK), ALSO REMOVE ANY EDGES DAMAGED DURING CONSTRUCTION.
  - COMPLETE FINAL 1½" LIFT OF ASPHALT (SP-9.5).
  - COMPLETE STRIPING/SIGNAGE.

- MOT NOTES:
  1. INSTALL ADVANCED WARNING SIGNS ON SIDE OF STREET. SIGN TO REMAIN DURING ALL PHASES.
  2. PLACE TEMPORARY WORK SIGNS, CHANNELIZING DEVICES AND OTHER TRAFFIC CONTROL DEVICES DURING CONSTRUCTION ACTIVITIES PER FDOT INDEX 600, 613, 615, AND 616.
  3. UPON COMPLETION OF ROADWAY CONSTRUCTION, PLACE PERMANENT PAVEMENT MARKINGS AND STRIPING.
  4. DAYTIME LANE CLOSURES SHALL BE LIMITED TO BETWEEN 9AM TO 3PM. NIGHTTIME LANE CLOSURES WILL BE ALLOWED IF NIGHTTIME WORK IS TO BE PERFORMED.
  5. ALL LANE CLOSURES MUST BE REVIEWED AND APPROVED BY THE CITY OF PORT SAINT LUCIE PUBLIC WORKS DEPARTMENT PRIOR TO IMPLEMENTATION.
  6. CLOSURES AND DETOURS SHALL HAVE MINIMAL IMPACT ON LOCAL STREETS. ANY DAMAGE TO LOCAL STREETS AS THE RESULT OF A DETOUR OR CLOSURE SHALL BE REPAIRED BY THE CONTRACTOR AT THEIR EXPENSE. CONTRACTOR IS RESPONSIBLE FOR VIDEOING AND RECORDING PRE-CONSTRUCTION CONDITION.

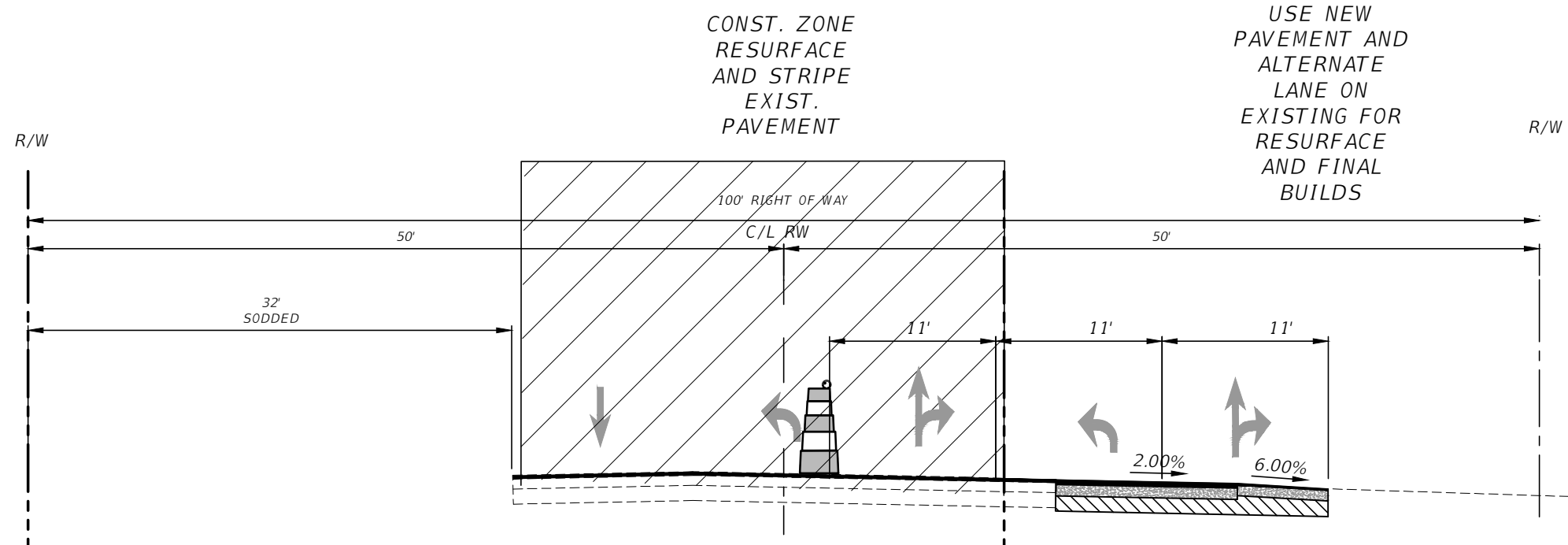
## PHASE 1

**RESTRIPE EXISTING FOR 11' LANE WIDTH, MAINTAIN TRAFFIC ON EXISTING WHILE CONSTRUCT NEW PAVEMENT**



## PHASE 2

**USE NEW PAVEMENT AND ALTERNATE LANE ON EXISTING FOR RESURFACE AND FINAL BUILDS**



814 NW Flagler Ave.  
Stuart, Florida 34994  
Phone: (772) 892-4344  
Fax: (772) 892-4341

**CAPTEC**  
Engineering, Inc.  
Civil Engineering Professionals

DATE:	8-15-22
DRAWN BY:	MDB
DESIGNED BY:	GA
CHECKED BY:	JWC
PROJECT NO.:	1813.30
HORIZ. SCALE:	1" = 10'
VERT. SCALE:	1" = 10'
CADD FILE:	

NO.	DATE	BY	REVISIONS
1	9/22/22	MDB	100% COMMENTS REVISIONS
2	2/7/23	MDB	100% COMMENTS REVISIONS

**SCALE VERIFICATION**

0 0.5 1 1.5 2

SOLID BAR IS EQUAL TO HALF AN INCH ON DIMENSIONS  
DASHED BAR IS EQUAL TO ONE INCH ON DIMENSIONS  
ADJUST ALL SCALED DIMENSIONS ACCORDINGLY

**NW EAST TORINO PARKWAY AND MIDWAY ROAD TURN LANE IMPROVEMENTS**  
CITY OF PORT ST. LUCIE, FLORIDA

**MAINTENANCE OF TRAFFIC**

Joseph W. Capra  
301 N.W. Flagler Ave.  
Stuart, Florida 34994  
P.E. No. 37638

THIS DOCUMENT, TOGETHER WITH THE CONCEPTS AND DESIGNS PRESENTED HEREIN, AS AN INSTRUMENT OF SERVICE, IS INTENDED ONLY FOR THE SPECIFIC PURPOSE AND CLIENT FOR WHICH IT WAS PREPARED. REUSE OF AND IMPROPER RELIANCE ON THIS DOCUMENT WITHOUT WRITTEN AUTHORIZATION AND ADOPTION BY CAPTEC ENGINEERING, INC. SHALL BE WITHOUT LIABILITY TO CAPTEC ENGINEERING, INC.