

- No landscaping shall be planted in such a manner as to adversely affect drainage or utility easements.
- Trees with a maximum mature height greater than 10 feet shall be planted below overhead power lines. Such trees with a maximum mature height less than the height of the overhead power line shall be selected from Appendix C, Table 1, Type B Trees. No tree shall be planted within 10 feet of any existing utility pole, guy wire, or pad mounted transformer (See FPAL's publication "Plant the Right Tree in the Right Place" for placement and maintenance requirements.)
- All landscaping within Port St. Lucie Utility Systems Department (PSLUSD) utility easements shall comply with PSLUSD technical specifications, policies, and codes.
- Trees shall not be planted within ten (10) feet of any PSLUSD underground infrastructure.
- In locations where the perimeter landscape buffers must be designed to be located in utility easements due to site constraints, the trees, palm trees and shrubs shall be selected from the list in §153.04(3)(d) and used in these areas to meet the landscape buffer requirements. Trees and palm trees may be planted not less than seven (7) feet from the underground PSLUSD infrastructure. The remainder of the landscape strip shall be planted with grass and ground cover.

- The landscape plans meet the City's sight distance and clear zone requirements from Section 158.204 of the Code for 10' requirements.

General Notes

- No plant substitutions can be made without the City of Port St. Lucie's approval.
- All required landscape improvements must be inspected and approved by the City of Port St. Lucie prior to the issuance of a Certificate of Occupancy.
- Any existing landscaping, sod, or irrigation damaged or destroyed during the construction shall be replaced prior to the final inspection.
- All prohibited, exotic and invasive species shall be removed from the entire site prior to issuance of certificate of occupancy.
- Planting adjacent to fire hydrants is to have a minimum clear radius of 7.5' as required by the NFPA Uniform Fire Code Florida Edition 18.3.4.1 Hydrants. All fire hydrants and fire check valves shall have a minimum of 7.5' from the front and sides with 4' from the rear to all landscape material per the Florida Fire Prevention Code.

Landscape Data

Perimeter Landscaping Adjacent to Road Right-of-way

Trees
Required - (1 Tree/30 L.F.) - 1,805.15 L.F./30 = 60 Trees
Provided - 60 Trees

Shrubs
Required - Continuous Hedge 2' O.C. = 903 Shrubs
Provided - 903 Shrubs

Perimeter Landscaping Adjacent to Another Property

Trees
Required: (1 Tree/30 L.F.) - 774.22 L.F./30 = 26 Trees
Provided: 26 Trees

Shrubs
Required: Continuous Hedge 2' O.C. = 388 Shrubs
Provided: 388 Shrubs

Parking Area Interior Landscaping

Required Terminal/Interior Island Trees - 1 Tree per Terminal/Interior Island = 27 Trees
Total Terminal/Interior Island Trees Provided = 27 Trees

Palm Requirements
Required: When 41+ trees are required the minimum species mix = 5
Total Trees & Palms = 137
Total Palms = 0 x 2 @ 2:1 = 0
Provided: Palms = 0 / 2 = 0 / 137 = 0%

Building Facades

Trees
Required - 1 Tree / 30 L.F. of Building Perimeter
730 L.F. of Building Perimeter / 30 L.F. = 24 Trees
Provided - 24 (Some relocated to dry retention for additional water cleansing)

Shrubs

Require - 1 Shrub / 1.5 L.F. of Building Perimeter
Excluding Paved Access Areas = 583 L.F. / 1.5 = 389 Shrubs
Provided - 389 Shrubs

Native Plants

Trees
Required: 50% of all required trees shall be native
Total Trees = 137
Provided: Native Trees = 137 / 137 = 100%

Shrubs
Required: 25% of all required shrubs shall be native
Total Shrubs = 1,706
Provided: Native Shrubs = 1,706 / 1,706 = 100%

Flowering Trees
Required: 20% of all required trees shall be flowering
Total Trees = 137 (Not Including Palms) x 20% = 28
Provided: Flowering Trees = 28 = 20%

Landscape Island Evergreen Shade Trees
Required: 75% of all required trees located within landscape islands shall be evergreen shade trees
Total Landscape Islands = 27 x 75% = 21 Trees
Provided: Landscape Islands with Evergreen Shade Trees = 27 = 100%

Tree Species Mix
Required: When 41+ trees are required the minimum species mix = 5
Provided: 7

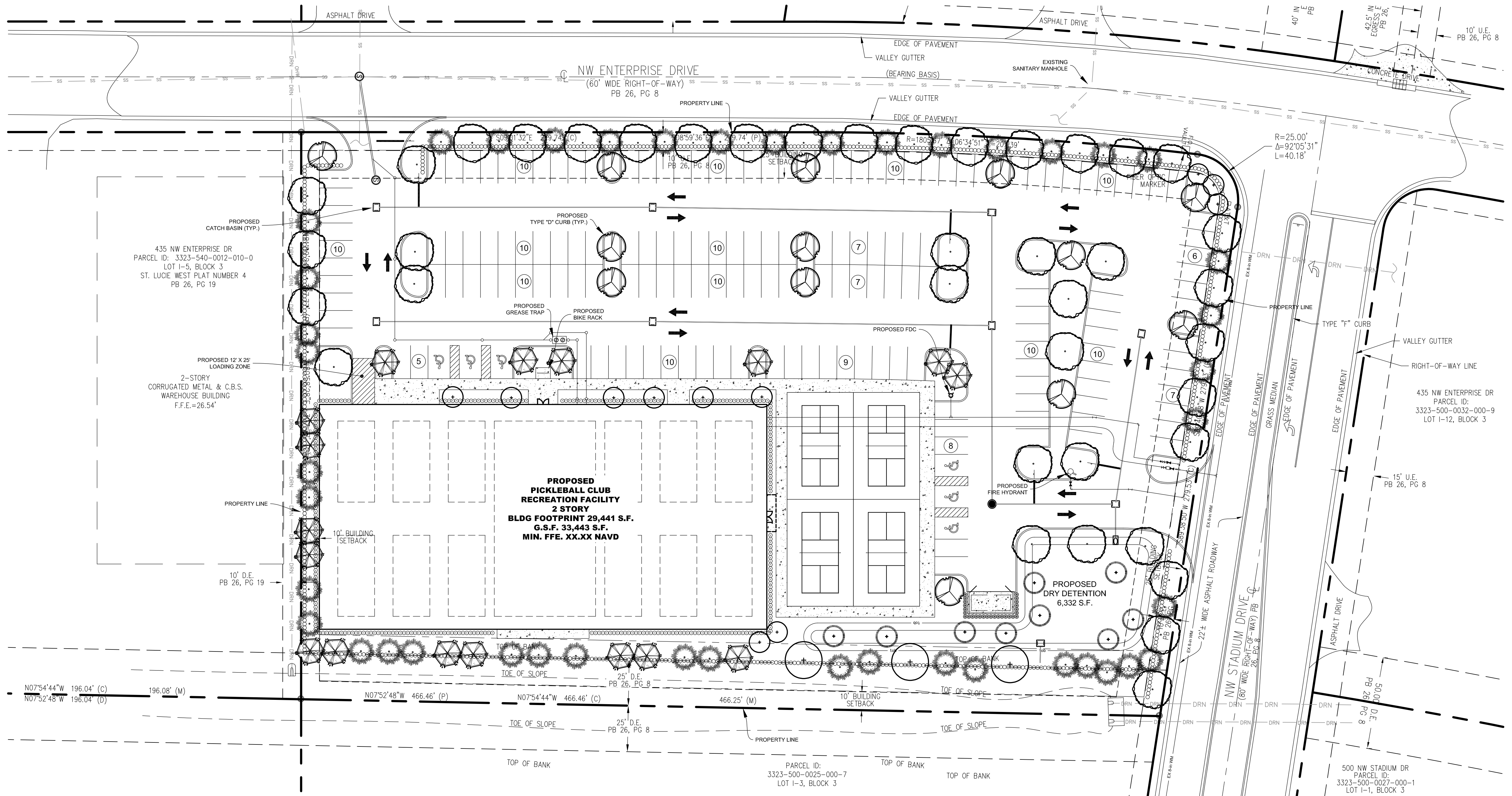
Dumpster
Required - Hedge / Vine 2' O.C. 54 L.F. / 2 = 27 Shrubs
Provided - 27 Shrubs

Total Trees:
Total Trees Required: 137
Total Trees Provided: 137

Plant List

SYM	SPECIES	COMMON NAME/DESCRIPTION	SIZE	SPACING	REMARKS	DROUGHT TOLERANCE
CANOPY / ORNAMENTAL TREES						
IE*	ILEX X ATTENUATA EAGLESTON	EAGLESTON HOLLY	12' x 5', 2.5' CAL.	A.S.	FULL CANOPY, 4 C.T. MIN.	HIGH
MG*	MAGNOLIA GRANDIFLORA	LITTLE GEM MAGNOLIA	12' x 5', 2.5' CAL.	A.S.	FULL CANOPY, 4 C.T. MIN.	HIGH
MG-1*	MAGNOLIA GRANDIFLORA	SOUTHERN MAGNOLIA D.D. BLANCHARD	12' x 5', 2.5' CAL.	A.S.	FULL CANOPY, 4 C.T. MIN.	HIGH
PE*	PINUS ELLIOTTI Densa	SOUTH FLORIDA SLASH PINE	12' x 5', 2.5' CAL.	A.S.	FULL CANOPY, 4 C.T. MIN.	HIGH
OL*	QUERCUS LAURIFOLIA	LAUREL OAK	12' x 5', 2.5' CAL.	A.S.	FULL CANOPY, 4 C.T. MIN.	HIGH
OV*	QUERCUS VIRGINIANA	LIVE OAK	12' x 5', 2.5' CAL.	A.S.	FULL CANOPY, 4 C.T. MIN.	HIGH
TD*	TAXODIUM DISTICHUM	BALD CYPRESS	12' x 5', 2.5' CAL.	A.S.	FULL CANOPY, 4 C.T. MIN.	HIGH
SHRUBS / GROUNDCOVERS / VINES						
FOS*	FORESTIERA SEGREGATA	FLORIDA PRIVET	#3, 2 x 2	2 O.C.	FULL & THICK	HIGH
MYR*	MYRICANTHES FRAGRANS	SIMPSON STOPPER	#3, 2 x 2	2 O.C.	FULL & THICK	HIGH
MYR-1*	MYRICANTHES FRAGRANS	SIMPSON STOPPER	#7, 4 x 2	2 O.C.	FULL & THICK	HIGH
SOD-1	PASPALUM NOTATUM	SEE SPECS	SEE SPECS			HIGH
SOD	STENOTAPHRUM SECUNDATUS	ST. AUGUSTINE SOD	SEE SPECS			LOW - MEDIUM

* = FLORIDA NATIVE



Conceptual Design Group, Inc.
Landscape Architecture - Site Planning
900 East Ocean Boulevard, Suite 1304
Stuart, Florida 34994
(772) 344-2340
L.C. 26000198

The Pickleball Club, LLC
Enterprise Drive
City of Port St. Lucie, Florida

Jeffrey W. Smith, RLA
Florida Registration Number: LA 0001635

Job No. 21-1101
Drawn By JWS
Submittal Dates 11-16-2021

Revision Dates

These drawings are the property of the landscape architect and are not to be used for other projects except by written permission from the landscape architect. Report any discrepancies immediately to the landscape architect.

North
Scale: 1" = 30'

Sheet CL-1 of 1
City Project Number:

Conceptual Landscape Plan