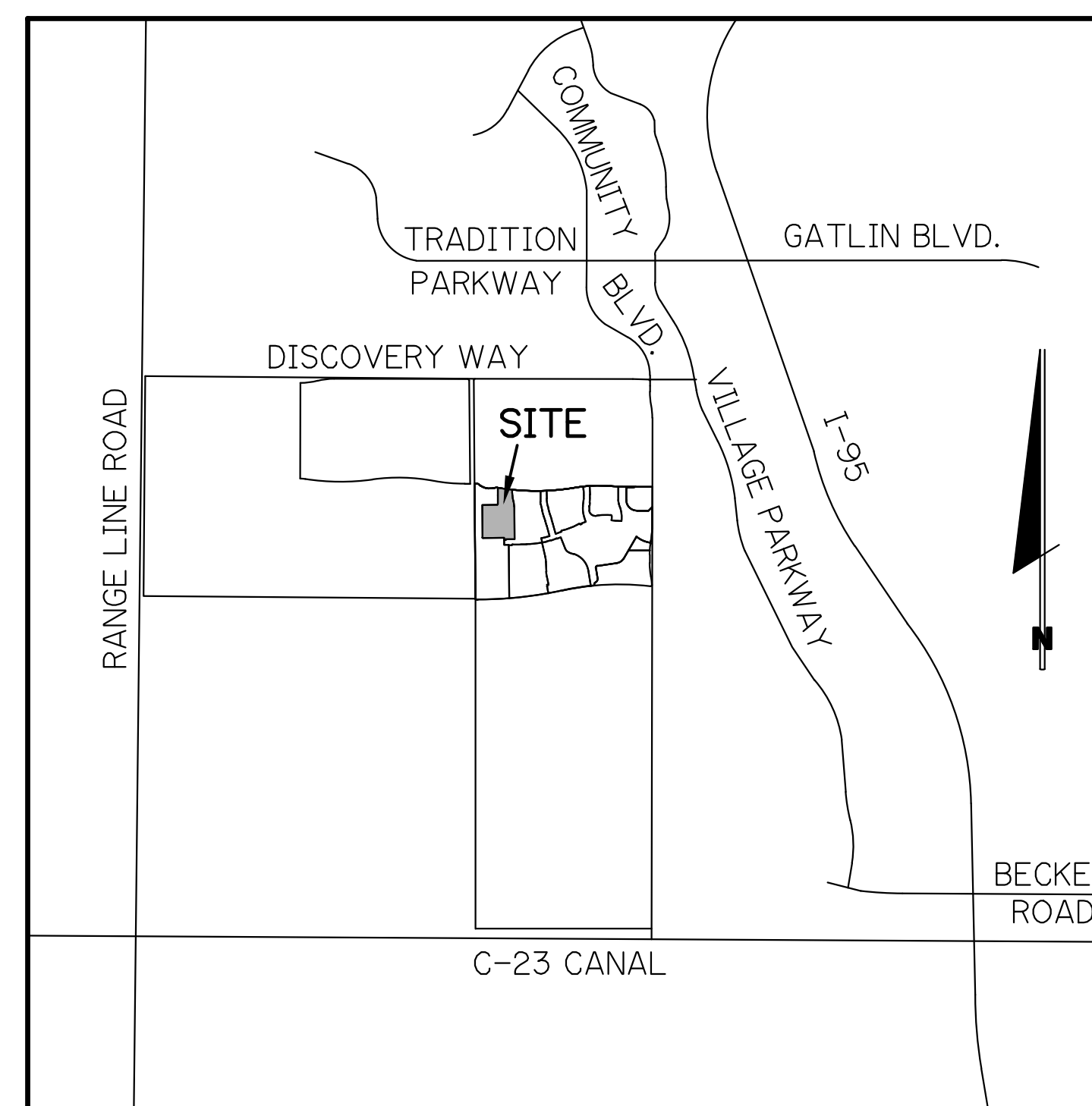


WATER AND SEWER IMPROVEMENTS
FOR
RIVERLAND — PARCEL B
PLAT EIGHT
CITY OF PORT ST. LUCIE, ST. LUCIE COUNTY, FLORIDA

LAST REVISED:
RIV-B PL 8 WS

DEVELOPER: **RIVERLAND ASSOCIATES II, LLLP**
1600 SAWGRASS CORPORATE PARKWAY, SUITE 400
SUNRISE, FLORIDA 33323
(954) 753-1730



LOCATION MAP
N.T.S.
SEC. 21 TWP. 37 S RGE. 39 E

INDEX OF SHEETS

SHEET No.	DESCRIPTION
1	COVER SHEET
2-9	WATER AND SEWER PLANS
10	OVERALL WATER SAMPLE POINT MAP
11	SEWER PROFILES

NOTE:
PSLUSD STANDARDS AND DETAILS EFFECTIVE 2019

PREPARED BY:

GLH ENGINEERING, LLC

1600 SAWGRASS CORPORATE
PARKWAY, SUITE 400
SUNRISE, FLORIDA 33323
PHONE: (954) 753-1730

FL. CERTIFICATE OF AUTHORIZATION NO. 27459

NOTE: ALL GRADES SHOWN ARE IN NAVD88

P21-275 (PSLUSD 5266J)

DATE
REVISION NO.

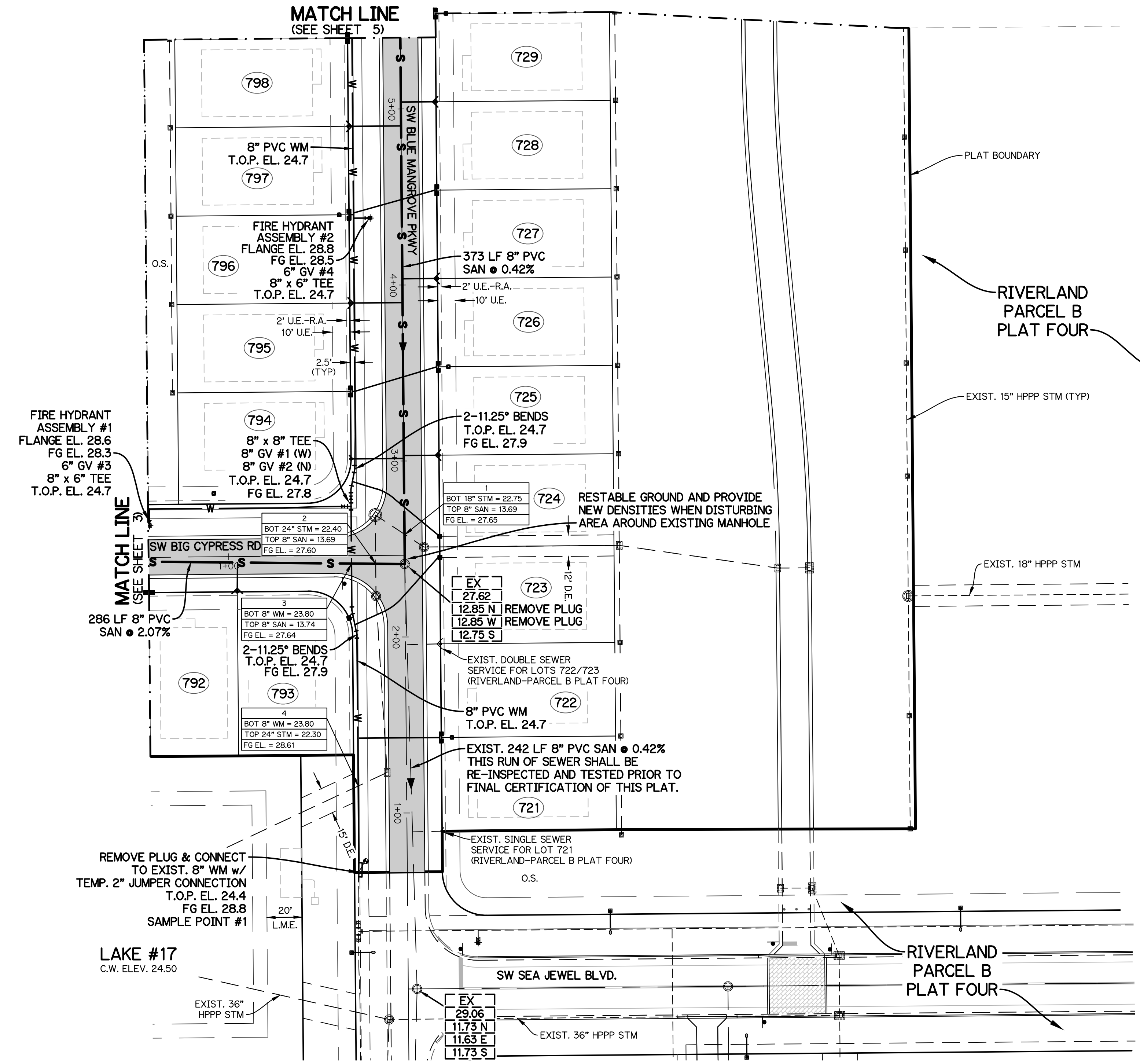
BRIAN ARNOLD, P.E. FLORIDA P.E. #81294	
RIV-B PL 8	WS
SHEET 1 OF 9	

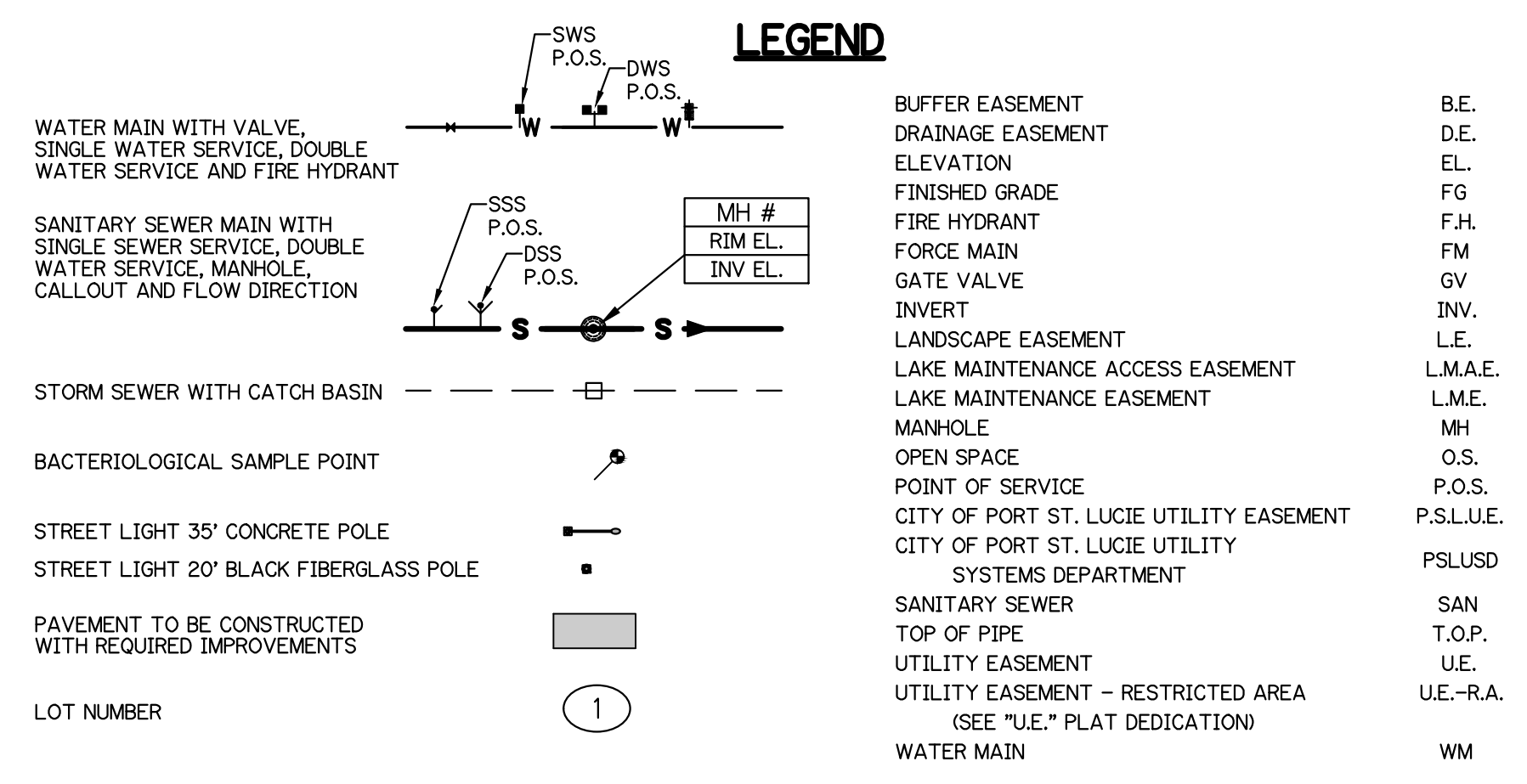
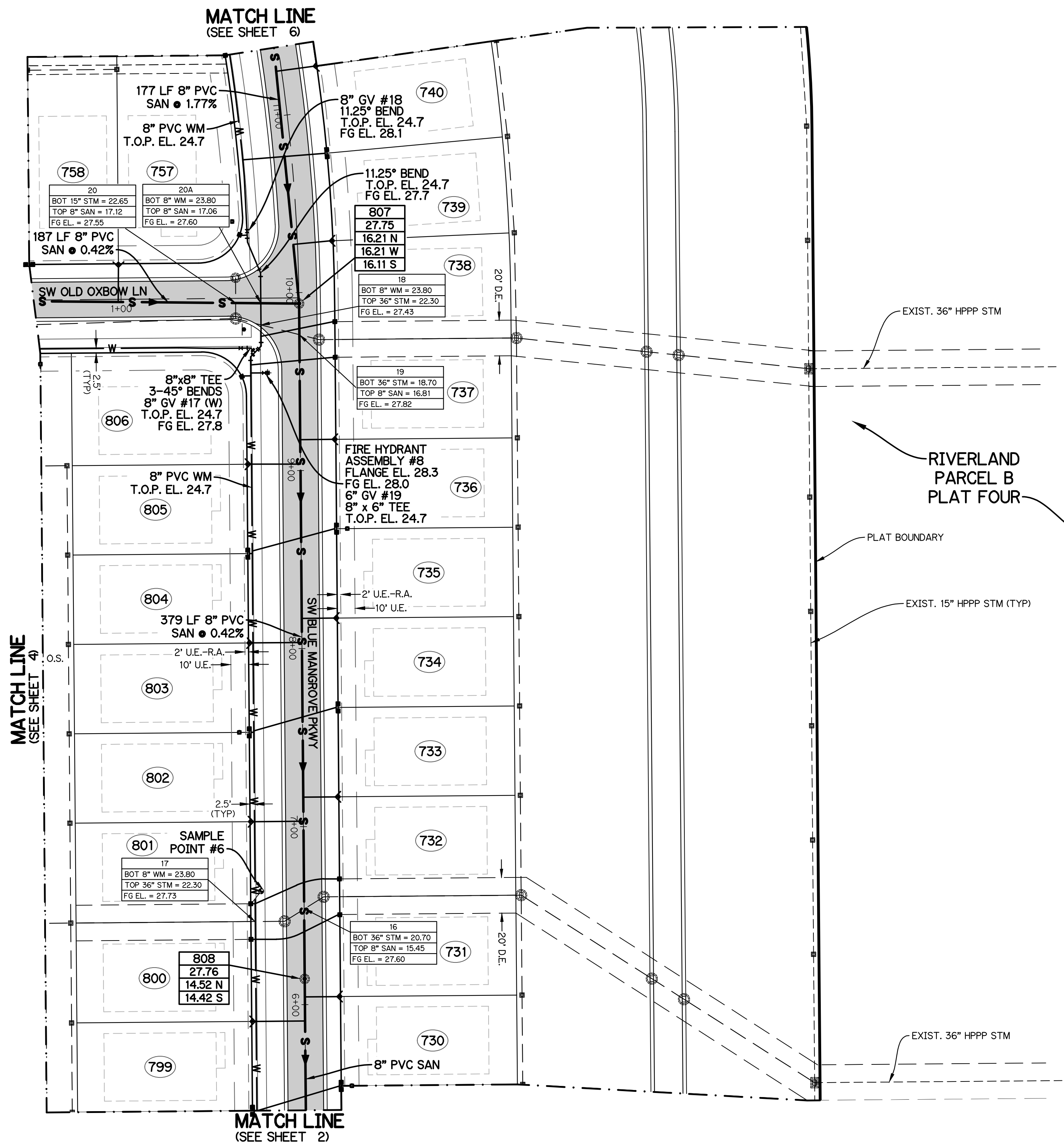
WATER AND SEWER PLAN
FOR
RIVERLAND-PARCEL B
PLAT EIGHT

LEGEND

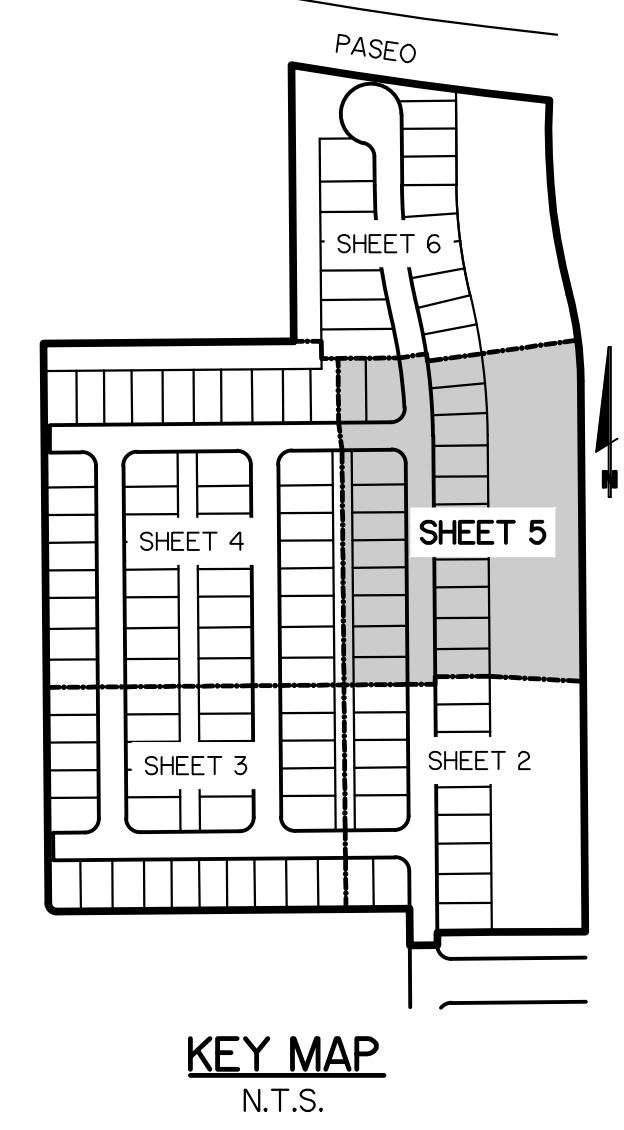
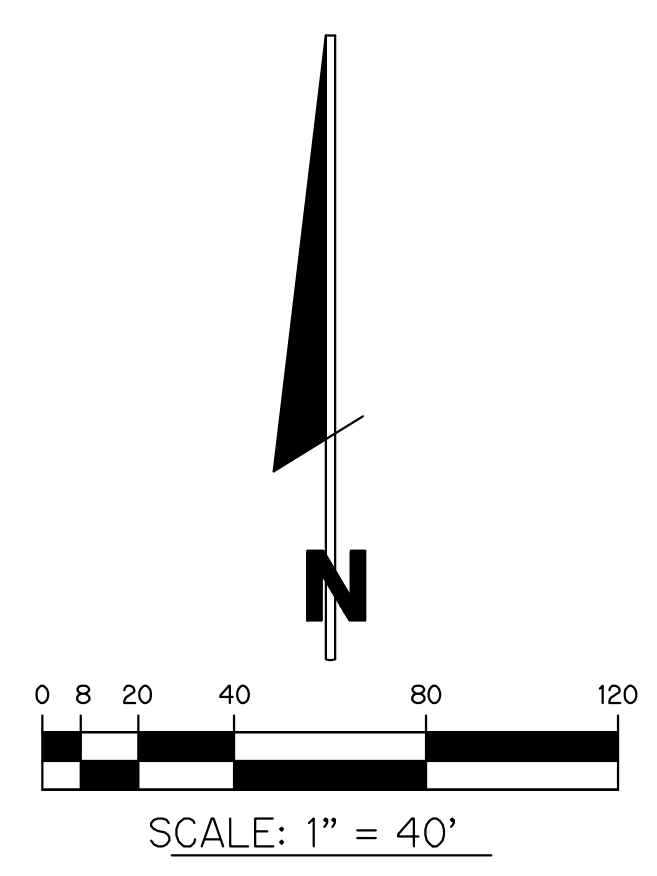
<p>WATER MAIN WITH VALVE, SINGLE WATER SERVICE, DOUBLE WATER SERVICE AND FIRE HYDRANT</p> <p>SANITARY SEWER MAIN WITH SINGLE SEWER SERVICE, DOUBLE WATER SERVICE, MANHOLE, CALLOUT AND FLOW DIRECTION</p> <p>STORM SEWER WITH CATCH BASIN</p> <p>BACTERIOLOGICAL SAMPLE POINT</p> <p>STREET LIGHT 35' CONCRETE POLE</p> <p>STREET LIGHT 20' BLACK FIBERGLASS POLE</p> <p>PAVEMENT TO BE CONSTRUCTED WITH REQUIRED IMPROVEMENTS</p> <p>LOT NUMBER</p>		<p>BUFFER EASEMENT</p> <p>DRAINAGE EASEMENT</p> <p>ELEVATION</p> <p>FINISHED GRADE</p> <p>FIRE HYDRANT</p> <p>FORCE MAIN</p> <p>GATE VALVE</p> <p>INVERT</p> <p>LANDSCAPE EASEMENT</p> <p>LAKE MAINTENANCE ACCESS EASEMENT</p> <p>LAKE MAINTENANCE EASEMENT</p> <p>MANHOLE</p> <p>OPEN SPACE</p> <p>POINT OF SERVICE</p> <p>CITY OF PORT ST. LUCIE UTILITY EASEMENT</p> <p>CITY OF PORT ST. LUCIE UTILITY SYSTEMS DEPARTMENT</p> <p>SANITARY SEWER</p> <p>TOP OF PIPE</p> <p>UTILITY EASEMENT</p> <p>UTILITY EASEMENT - RESTRICTED AREA (SEE "U.E." PLAT DEDICATION)</p> <p>WATER MAIN</p>	<p>B.E.</p> <p>D.E.</p> <p>EL.</p> <p>FG</p> <p>F.H.</p> <p>FM</p> <p>GV</p> <p>INV.</p> <p>L.E.</p> <p>L.M.A.E.</p> <p>L.M.E.</p> <p>MH</p> <p>O.S.</p> <p>P.O.S.</p> <p>P.S.L.U.E.</p> <p>PSLUSD</p> <p>SAN</p> <p>T.O.P.</p> <p>U.E.</p> <p>U.E.-R.A.</p> <p>WM</p>
--	--	--	--

- NOTES:**
- ALL CONSTRUCTION SHALL BE IN ACCORDANCE WITH THE CITY OF PORT ST. LUCIE UTILITY SYSTEMS DEPARTMENT (PSLUSD) UTILITY STANDARDS MANUAL, 2019 EDITION AS WELL AS THE PSLUSD UTILITY STANDARD DETAILS, 2019 EDITION. A COPY OF THE 2019 EDITION OF THE PSLUSD UTILITY STANDARDS MANUAL AND UTILITY STANDARD DETAILS SHALL BE AVAILABLE ON-SITE AT ALL TIMES UTILITY RELATED WORK IS BEING PERFORMED.
 - PRIOR TO CONSTRUCTION IT IS THE RESPONSIBILITY OF THE CONTRACTOR TO FIELD VERIFY (ELEVATION AND LOCATION) ALL EXISTING UTILITIES. ANY DISCREPANCIES SHALL BE BROUGHT TO THE ATTENTION OF THE ENGINEER PRIOR (EOR) TO CONTINUATION OF WORK.
 - THERE SHALL BE NO FIELD CHANGES OR DEVIATIONS FROM DESIGN WITHOUT PRIOR WRITTEN APPROVAL OF THE PSLUSD AND ENGINEER OF RECORD.
 - ELEVATIONS - ALL ELEVATIONS REFER TO NORTH AMERICAN VERTICAL DATUM OF 1988 (NAVD88).
 - ALL WATER AND WASTEWATER PRESSURE MAINS SHALL BE PVC, C-900, DR18 (PRESSURE CLASS 235).
 - ALL GRAVITY SEWER PIPE, FITTINGS AND SERVICE LINES SHALL BE PVC, SDR 26 AND, AS A MINIMUM, CONFORM TO ASTM D-3034.
 - VALVES SHALL NOT BE PLACED IN CURBS, GUTTERS, SIDEWALKS, PARKING SPACES AND HANDICAP RAMPS. WHERE CONCRETE VALVE PADS TO BE OWNED BY PSLUSD ARE ADJACENT TO SIDEWALKS, THE PADS SHALL BE POURED AS PART OF THE SIDEWALK POUR WITH NO JOINTS.
 - METER BOXES TO MAINTAIN MINIMUM OF 5' SEPARATION FROM LIGHT POLE.





- NOTES:
1. ALL CONSTRUCTION SHALL BE IN ACCORDANCE WITH THE CITY OF PORT ST. LUCIE UTILITY SYSTEMS DEPARTMENT (PSLUSD) UTILITY STANDARDS MANUAL, 2019 EDITION AS WELL AS THE PSLUSD UTILITY STANDARD DETAILS, 2019 EDITION. A COPY OF THE 2019 EDITION OF THE PSLUSD UTILITY STANDARDS MANUAL AND UTILITY STANDARD DETAILS SHALL BE AVAILABLE ON-SITE AT ALL TIMES UTILITY RELATED WORK IS BEING PERFORMED.
 2. PRIOR TO CONSTRUCTION IT IS THE RESPONSIBILITY OF THE CONTRACTOR TO FIELD VERIFY (ELEVATION AND LOCATION) ALL EXISTING UTILITIES. ANY DISCREPANCIES SHALL BE BROUGHT TO THE ATTENTION OF THE ENGINEER PRIOR (EOR) TO CONTINUATION OF WORK.
 3. THERE SHALL BE NO FIELD CHANGES OR DEVIATIONS FROM DESIGN WITHOUT PRIOR WRITTEN APPROVAL OF THE PSLUSD AND ENGINEER OF RECORD.
 4. ELEVATIONS - ALL ELEVATIONS REFER TO NORTH AMERICAN VERTICAL DATUM OF 1988 (NAVD88).
 5. ALL WATER AND WASTEWATER PRESSURE MAINS SHALL BE PVC, C-900, DR18 (PRESSURE CLASS 235).
 6. ALL GRAVITY SEWER PIPE, FITTINGS AND SERVICE LINES SHALL BE PVC, SDR 26 AND, AS A MINIMUM, CONFORM TO ASTM D-3034.
 7. VALVES SHALL NOT BE PLACED IN CURBS, GUTTERS, SIDEWALKS, PARKING SPACES AND HANDICAP RAMPS. WHERE CONCRETE VALVE PADS TO BE OWNED BY PSLUSD ARE ADJACENT TO SIDEWALKS, THE PADS SHALL BE POURED AS PART OF THE SIDEWALK POUR WITH NO JOINTS.
 8. METER BOXES TO MAINTAIN MINIMUM OF 5' SEPARATION FROM LIGHT POLE.



WATER AND SEWER PLAN
FOR
RIVERLAND-PARCEL B
PLAT EIGHT

REVISIONS	DATE	BY	CK

GLH ENGINEERING, LLC
 1600 SAWGRASS CORPORATE
 PARKWAY, SUITE 400
 SUNRISE, FLORIDA 33323
 PHONE: (954) 753-1730

SCALE: 1"=40'
 DATE: 1/31/22
 DESIGNED BY: BA
 CHECKED BY: MW
 FILE NAME:
 RIV-B PL 8 WS

BRIAN ARNOLD, P.E.
 FLORIDA P.E. #81294

RIV-B PL 8 WS

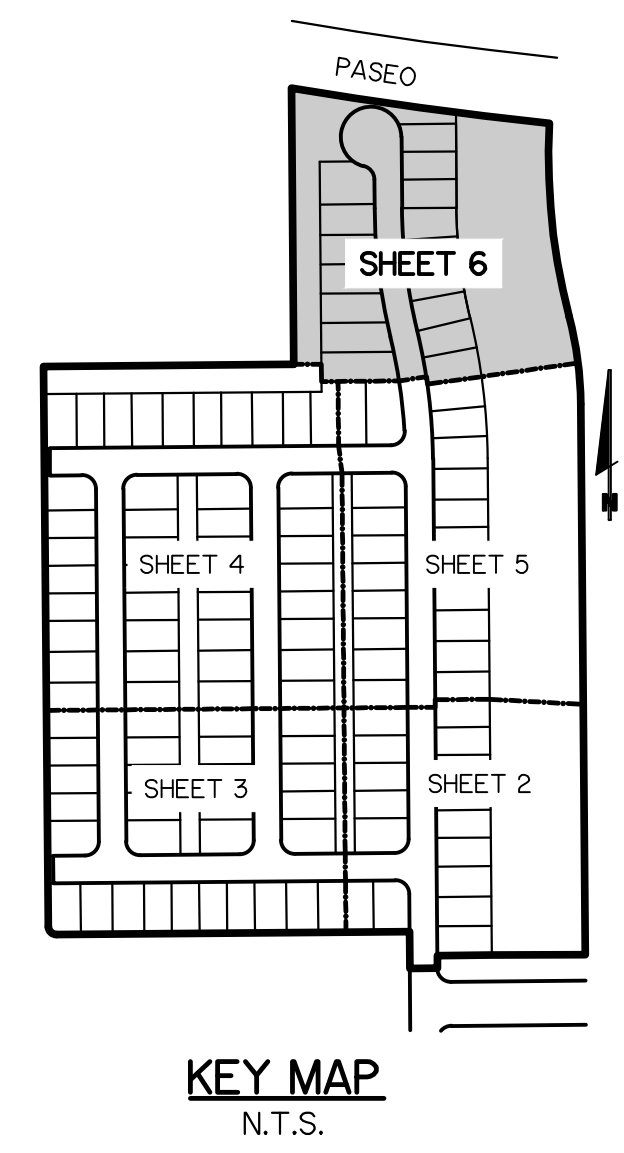
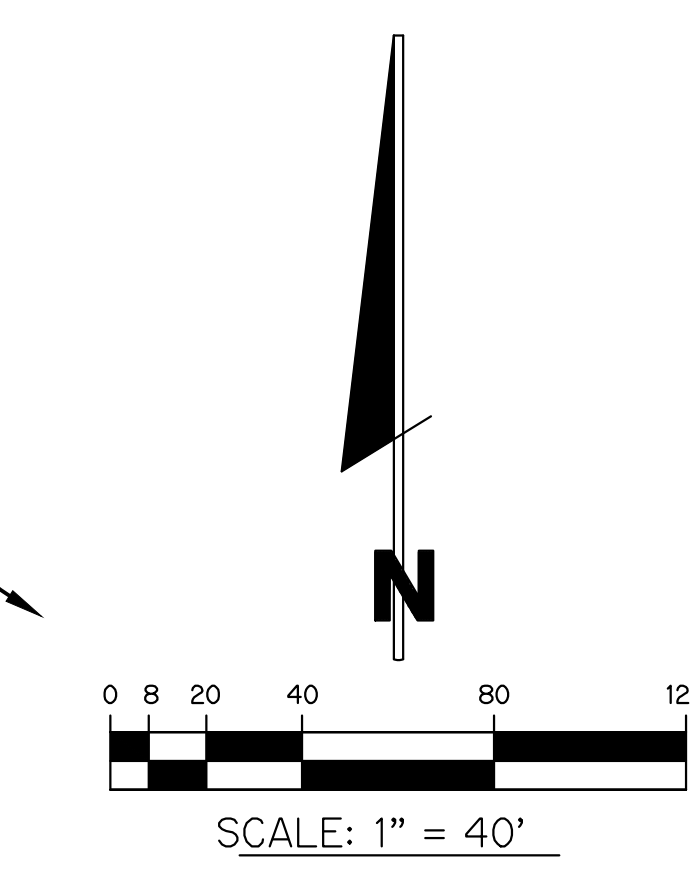
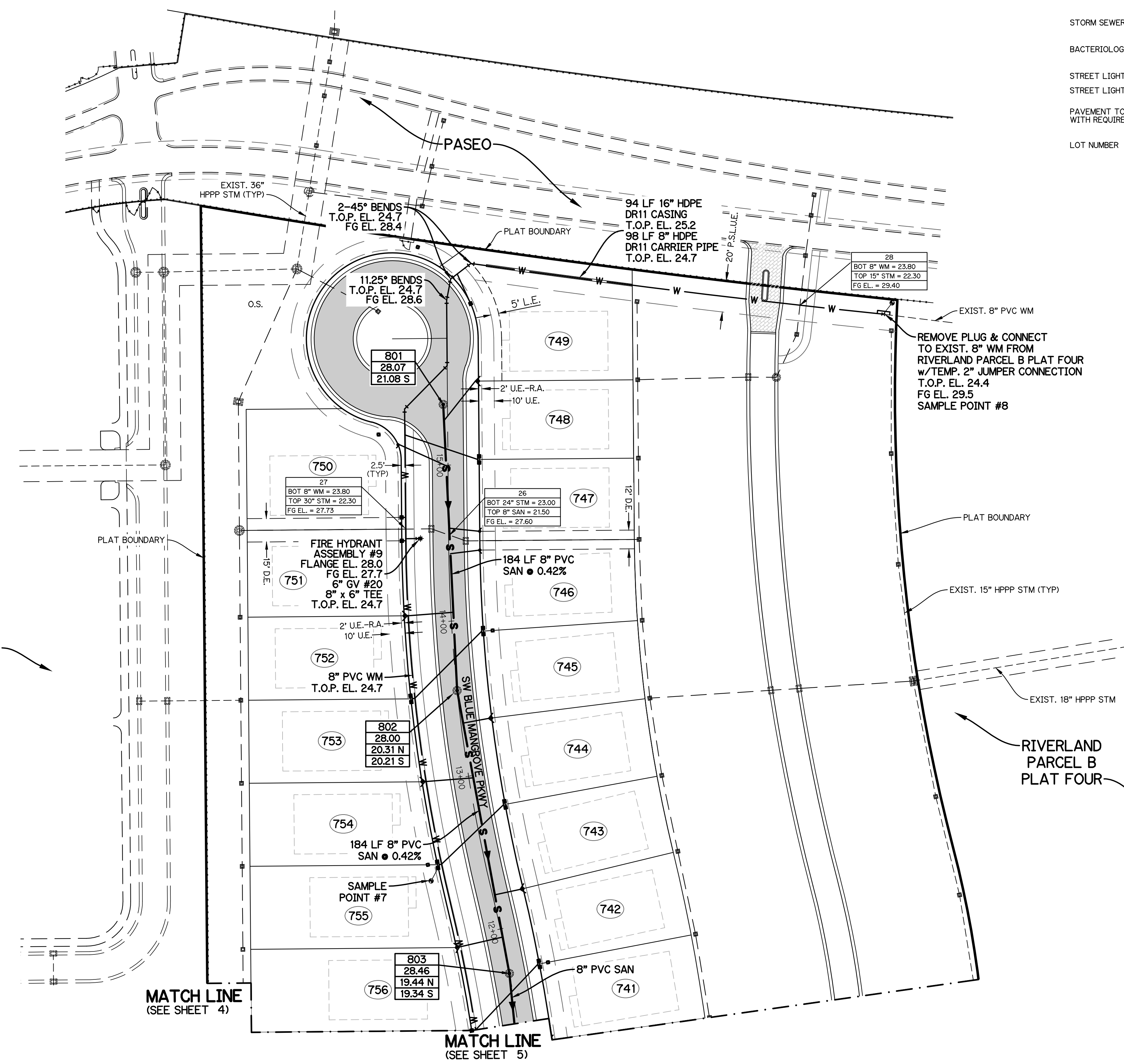
SHEET 5 OF 9

NOTE: ALL GRADES SHOWN ARE IN NAVD88
P21-275 (PSLUSD 5266J)

WATER AND SEWER PLAN
FOR
RIVERLAND-PARCEL B
PLAT EIGHT

LEGEND	
WATER MAIN WITH VALVE, SINGLE WATER SERVICE, DOUBLE WATER SERVICE AND FIRE HYDRANT	
SANITARY SEWER MAIN WITH SINGLE SEWER SERVICE, DOUBLE WATER SERVICE, MANHOLE, CALLOUT AND FLOW DIRECTION	
STORM SEWER WITH CATCH BASIN	
BACTERIOLOGICAL SAMPLE POINT	
STREET LIGHT 35' CONCRETE POLE	
STREET LIGHT 20' BLACK FIBERGLASS POLE	
PAVEMENT TO BE CONSTRUCTED WITH REQUIRED IMPROVEMENTS	
LOT NUMBER	
BUFFER EASEMENT DRAINAGE EASEMENT ELEVATION FINISHED GRADE FIRE HYDRANT FORCE MAIN GATE VALVE INVERT LANDSCAPE EASEMENT LAKE MAINTENANCE ACCESS EASEMENT LAKE MAINTENANCE EASEMENT MANHOLE OPEN SPACE POINT OF SERVICE CITY OF PORT ST. LUCIE UTILITY EASEMENT CITY OF PORT ST. LUCIE UTILITY SYSTEMS DEPARTMENT SANITARY SEWER TOP OF PIPE UTILITY EASEMENT UTILITY EASEMENT - RESTRICTED AREA (SEE "U.E." PLAT DEDICATION) WATER MAIN	

- NOTES:
- ALL CONSTRUCTION SHALL BE IN ACCORDANCE WITH THE CITY OF PORT ST. LUCIE UTILITY SYSTEMS DEPARTMENT (PSLUSD) UTILITY STANDARDS MANUAL, 2019 EDITION AS WELL AS THE PSLUSD UTILITY STANDARD DETAILS, 2019 EDITION. A COPY OF THE 2019 EDITION OF THE PSLUSD UTILITY STANDARDS MANUAL AND UTILITY STANDARD DETAILS SHALL BE AVAILABLE ON-SITE AT ALL TIMES UTILITY RELATED WORK IS BEING PERFORMED.
 - PRIOR TO CONSTRUCTION IT IS THE RESPONSIBILITY OF THE CONTRACTOR TO FIELD VERIFY (ELEVATION AND LOCATION) ALL EXISTING UTILITIES. ANY DISCREPANCIES SHALL BE BROUGHT TO THE ATTENTION OF THE ENGINEER PRIOR (EOR) TO CONTINUATION OF WORK.
 - THERE SHALL BE NO FIELD CHANGES OR DEVIATIONS FROM DESIGN WITHOUT PRIOR WRITTEN APPROVAL OF THE PSLUSD AND ENGINEER OF RECORD.
 - ELEVATIONS - ALL ELEVATIONS REFER TO NORTH AMERICAN VERTICAL DATUM OF 1988 (NAVD88).
 - ALL WATER AND WASTEWATER PRESSURE MAINS SHALL BE PVC, C-900, DR18 (PRESSURE CLASS 235).
 - ALL GRAVITY SEWER PIPE, FITTINGS AND SERVICE LINES SHALL BE PVC, SDR 26 AND, AS A MINIMUM, CONFORM TO ASTM D-3034.
 - VALVES SHALL NOT BE PLACED IN CURBS, GUTTERS, SIDEWALKS, PARKING SPACES AND HANDICAP RAMPS. WHERE CONCRETE VALVE PADS TO BE OWNED BY PSLUSD ARE ADJACENT TO SIDEWALKS, THE PADS SHALL BE POURED AS PART OF THE SIDEWALK POUR WITH NO JOINTS.
 - METER BOXES TO MAINTAIN MINIMUM OF 5' SEPARATION FROM LIGHT POLE.



REVISIONS	DATE	BY	CK

GLH ENGINEERING, LLC
 1600 SAWGRASS CORPORATE
 PARKWAY, SUITE 400
 SUNRISE, FLORIDA 33323
 PHONE: (954) 753-1730

SCALE: 1"=40'
 DATE: 1/31/22
 DESIGNED BY: BA
 CHECKED BY: MW
 FILE NAME:
 RIV-B PL 8 WS

BRIAN ARNOLD, P.E.
 FLORIDA P.E. #81294

RIV-B PL 8 WS

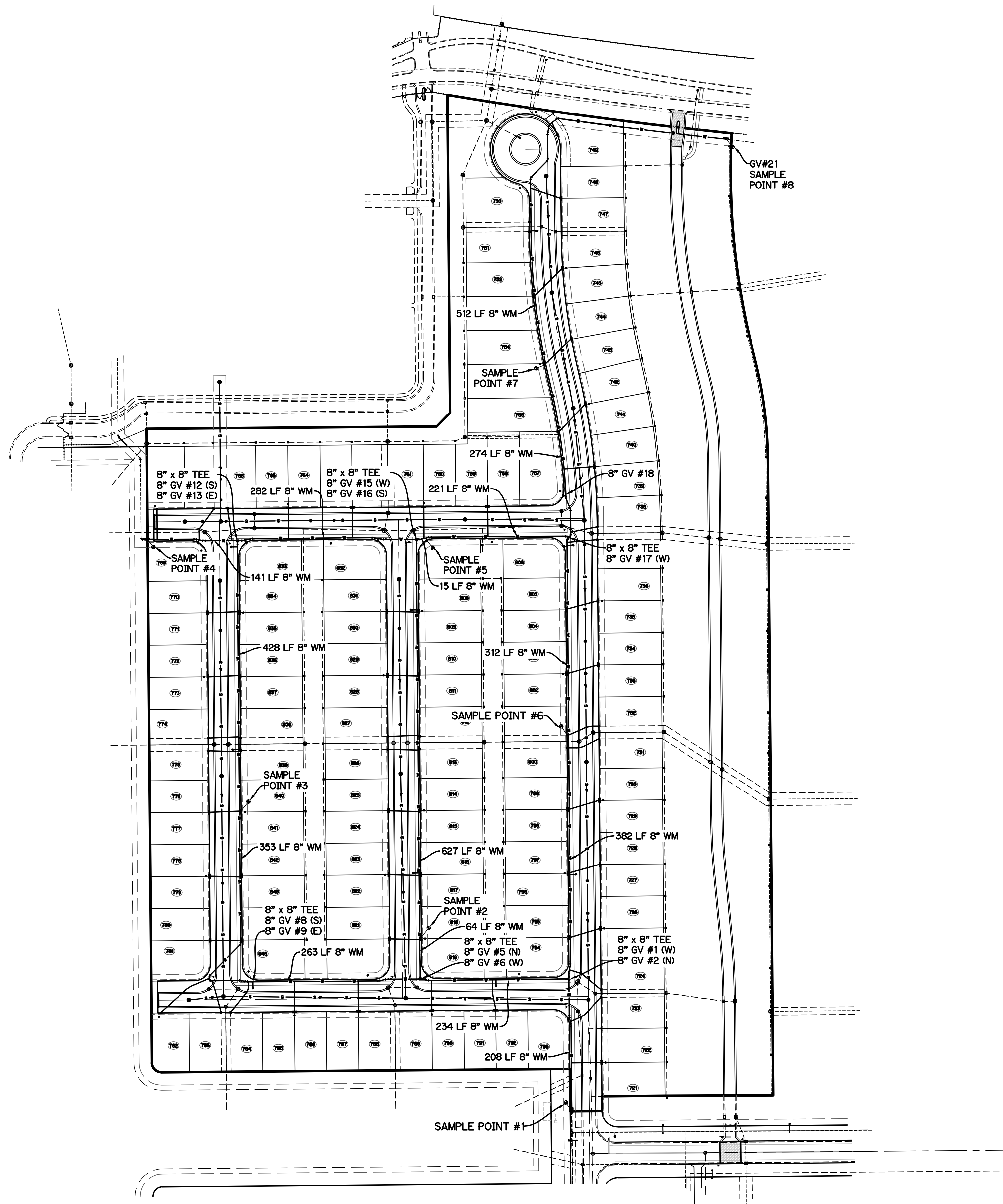
SHEET 6 OF 9

NOTE: ALL GRADES SHOWN ARE IN NAVD88
P21-275 (PSLUSD 5266J)

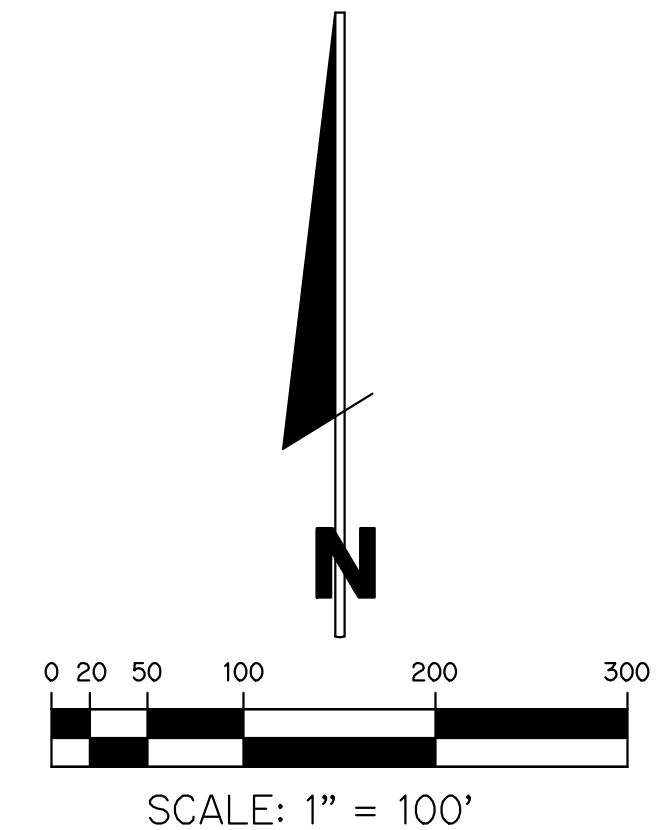
RIVERLAND
 PARCEL B
 PLAT SEVEN
 REC TRACT #3

MATCH LINE
 (SEE SHEET 4)

MATCH LINE
 (SEE SHEET 5)



- NOTES:
1. ALL CONSTRUCTION SHALL BE IN ACCORDANCE WITH THE CITY OF PORT ST. LUCIE UTILITY SYSTEMS DEPARTMENT (PSLUSD) UTILITY STANDARDS MANUAL, 2019 EDITION AS WELL AS THE PSLUSD UTILITY STANDARD DETAILS, 2019 EDITION. A COPY OF THE 2019 EDITION OF THE PSLUSD UTILITY STANDARDS MANUAL AND UTILITY STANDARD DETAILS SHALL BE AVAILABLE ON-SITE AT ALL TIMES UTILITY RELATED WORK IS BEING PERFORMED.
 2. PRIOR TO CONSTRUCTION IT IS THE RESPONSIBILITY OF THE CONTRACTOR TO FIELD VERIFY (ELEVATION AND LOCATION) ALL EXISTING UTILITIES. ANY DISCREPANCIES SHALL BE BROUGHT TO THE ATTENTION OF THE ENGINEER PRIOR (EOR) TO CONTINUATION OF WORK.
 3. THERE SHALL BE NO FIELD CHANGES OR DEVIATIONS FROM DESIGN WITHOUT PRIOR WRITTEN APPROVAL OF THE PSLUSD AND ENGINEER OF RECORD.
 4. ELEVATIONS - ALL ELEVATIONS REFER TO NORTH AMERICAN VERTICAL DATUM OF 1988 (NAVD88).
 5. ALL WATER AND WASTEWATER PRESSURE MAINS SHALL BE PVC, C-900, DR18 (PRESSURE CLASS 235).
 6. ALL GRAVITY SEWER PIPE, FITTINGS AND SERVICE LINES SHALL BE PVC, SDR 26 AND, AS A MINIMUM, CONFORM TO ASTM D-3034.
 7. VALVES SHALL NOT BE PLACED IN CURBS, GUTTERS, SIDEWALKS, PARKING SPACES AND HANDICAP RAMPS. WHERE CONCRETE VALVE PADS TO BE OWNED BY PSLUSD ARE ADJACENT TO SIDEWALKS, THE PADS SHALL BE POURED AS PART OF THE SIDEWALK POUR WITH NO JOINTS.
 8. METER BOXES TO MAINTAIN MINIMUM OF 5' SEPARATION FROM LIGHT POLE.



LEGEND

- SAMPLE POINT
- WATER MAIN

OVERALL WATER SAMPLE POINT MAP
FOR
RIVERLAND-PARCEL B
PLAT EIGHT

REVISIONS	DATE	BY	CK

GLH ENGINEERING, LLC
 1600 SAWGRASS CORPORATE
 PARKWAY, SUITE 400
 SUNRISE, FLORIDA 33323
 PHONE: (954) 753-1730

SCALE: 1"=80'
 DATE: 1/31/22
 DESIGNED BY: AQC
 CHECKED BY: BA
 FILE NAME:
 RIV-B PL 8 WS

BRIAN ARNOLD, P.E.
 FLORIDA P.E. #81294

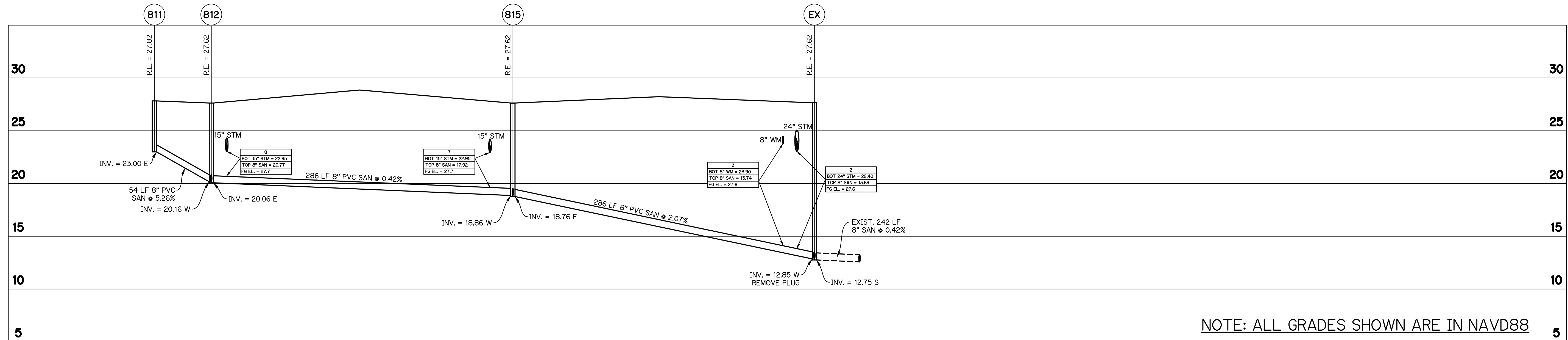
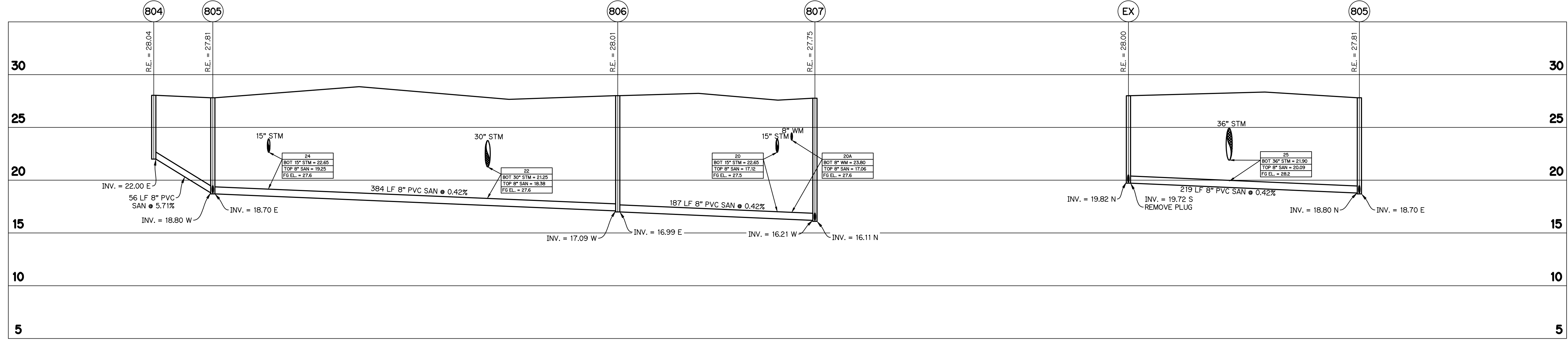
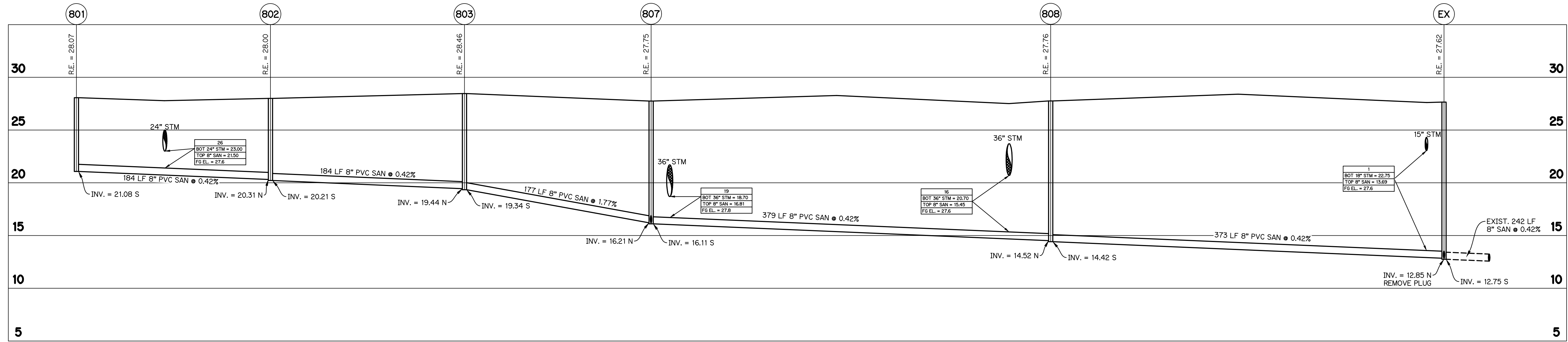
RIV-B PL 8 WS

SHEET 7 OF 9

NOTE: ALL GRADES SHOWN ARE IN NAVD88

P21-275 (PSLUSD 5266J)

SEWER PROFILES
FOR
RIVERLAND-PARCEL B
PLAT EIGHT



NOTE: ALL GRADES SHOWN ARE IN NAVD88

NO.	DATE	BY	CHK

GLH ENGINEERING, LLC
1600 SAWGRASS CORPORATE
PARKWAY, SUITE 400
SUNRISE, FLORIDA 33323
PHONE: (954) 753-1730

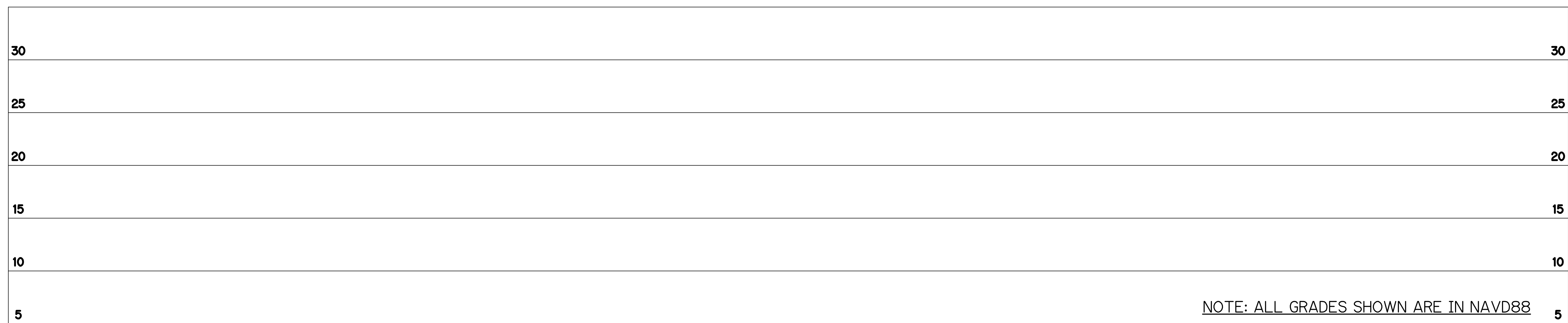
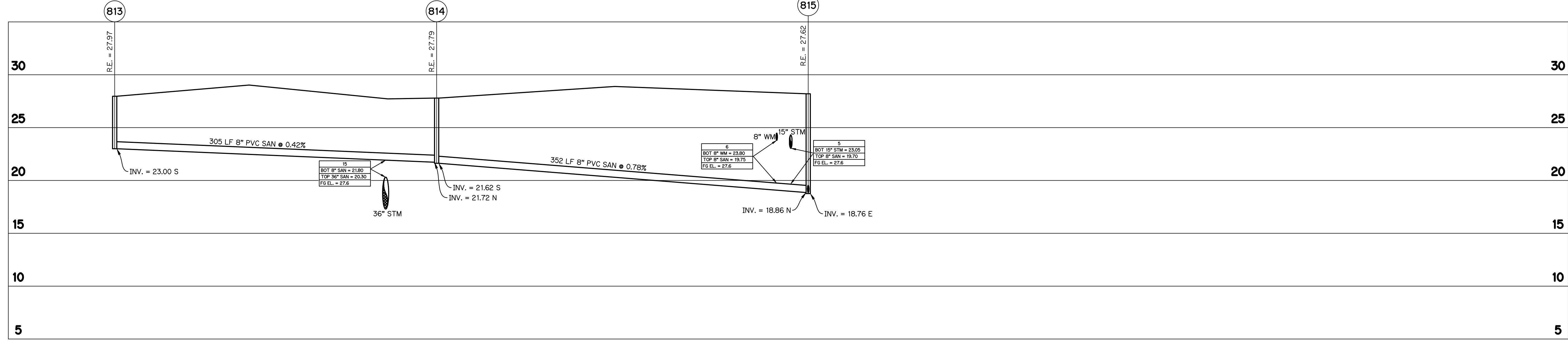
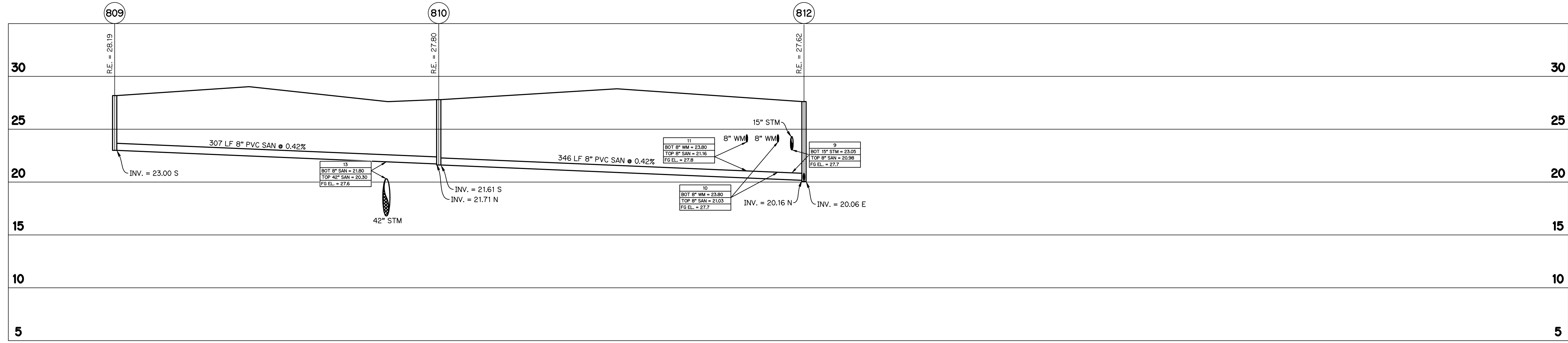
SCALE: HORIZ: 1" = 50'
VERT: 1" = 5'
DATE: 1/31/22
DESIGNED BY: BA
CHECKED BY: MW
FILE NAME:
RIV-B PL 8 WS

BRIAN ARNOLD, P.E.
FLORIDA P.E. #81294

RIV-B PL 8 WS

SHEET 8 OF 9

P21-275 (PSLUSD 5266J)



NOTE: ALL GRADES SHOWN ARE IN NAVD88

SEWER PROFILES
FOR
RIVERLAND-PARCEL B
PLAT EIGHT

NO.	DATE	BY	CK

GLH ENGINEERING, LLC
1600 SAWGRASS CORPORATE
PARKWAY, SUITE 400
SUNRISE, FLORIDA 33323
PHONE: (954) 753-1730

SCALE: HORIZ: 1" = 50'
VERT. 1" = 5'
DATE: 1/31/22
DESIGNED BY: BA
CHECKED BY: MW
FILE NAME:
RIV-B PL 8 WS

BRIAN ARNOLD, P.E.
FLORIDA P.E. #81294