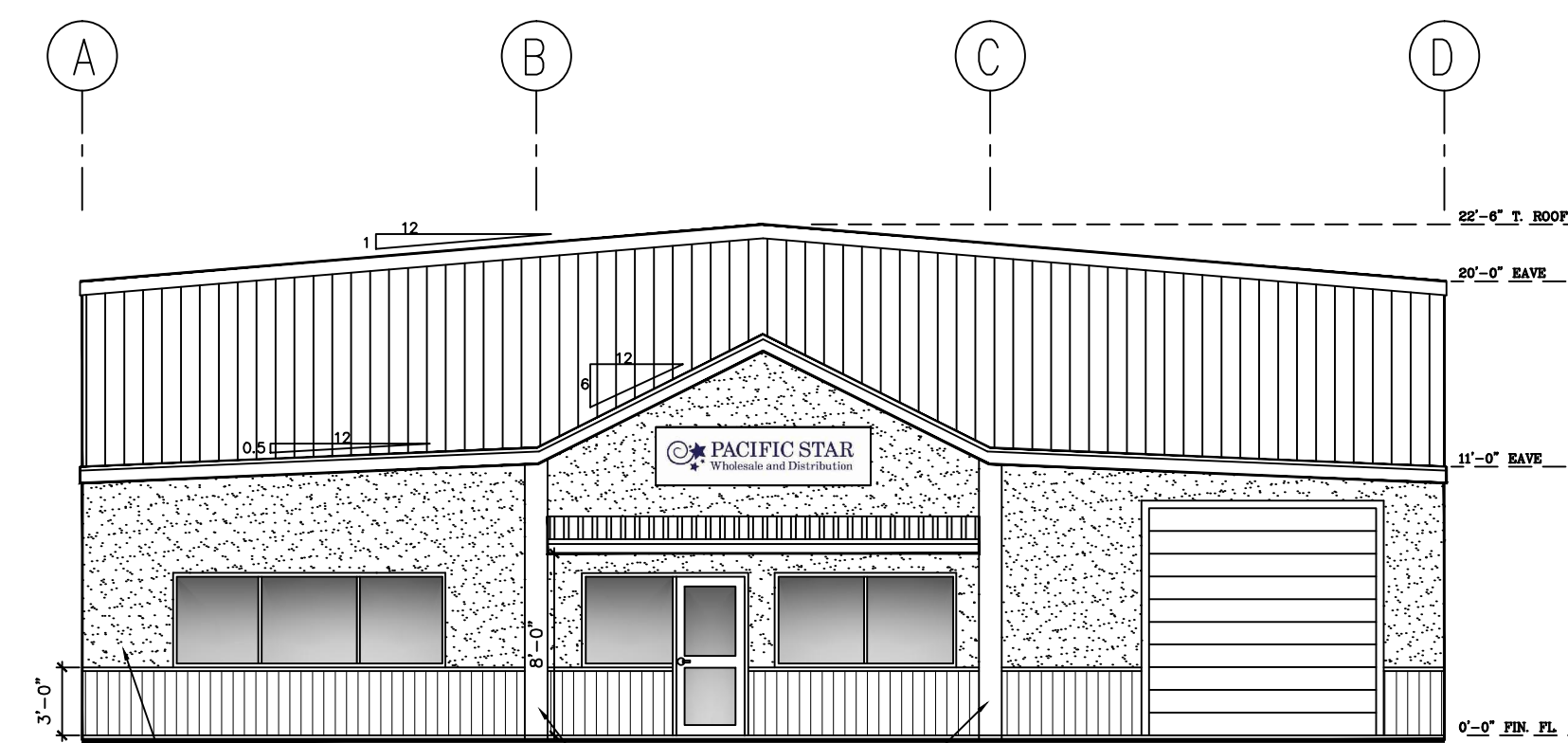
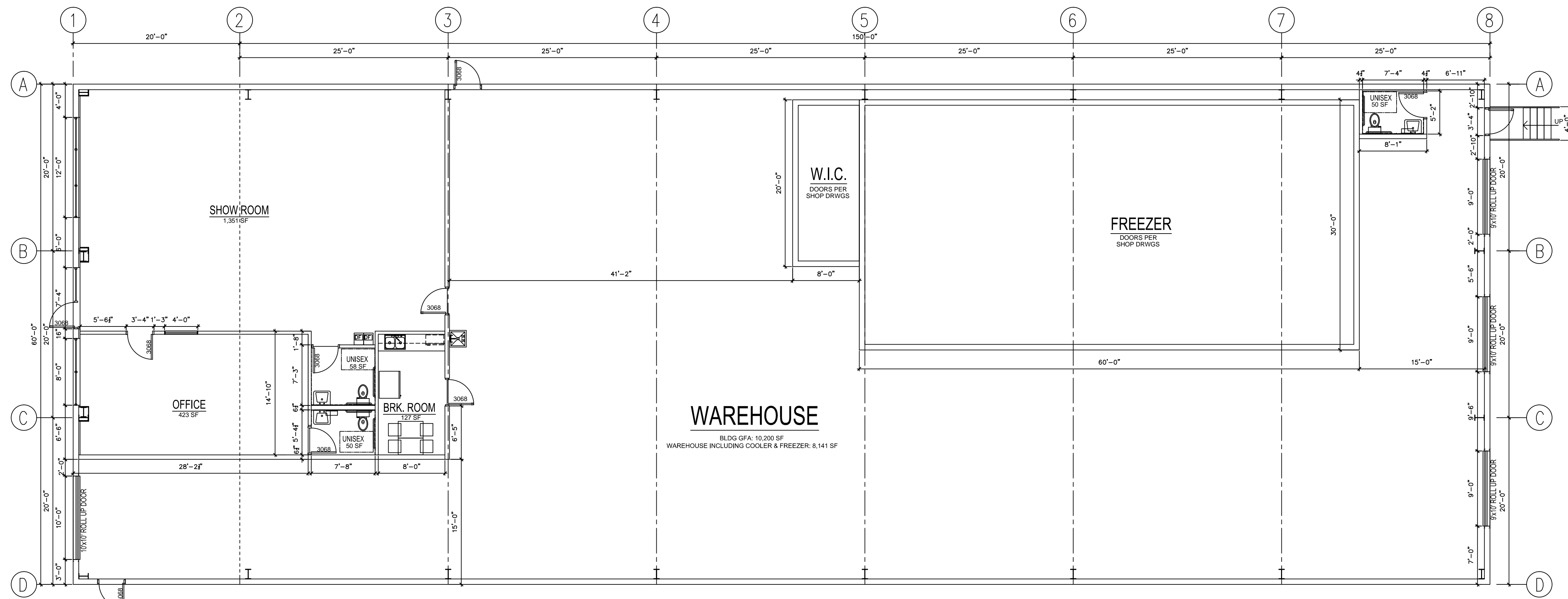


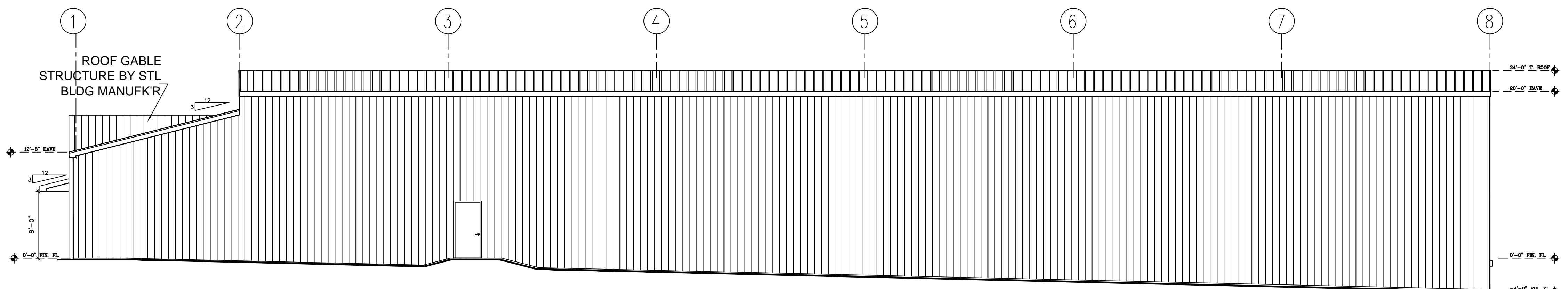
EAST ELEVATION
SCALE: 1/4" = 1'-0"



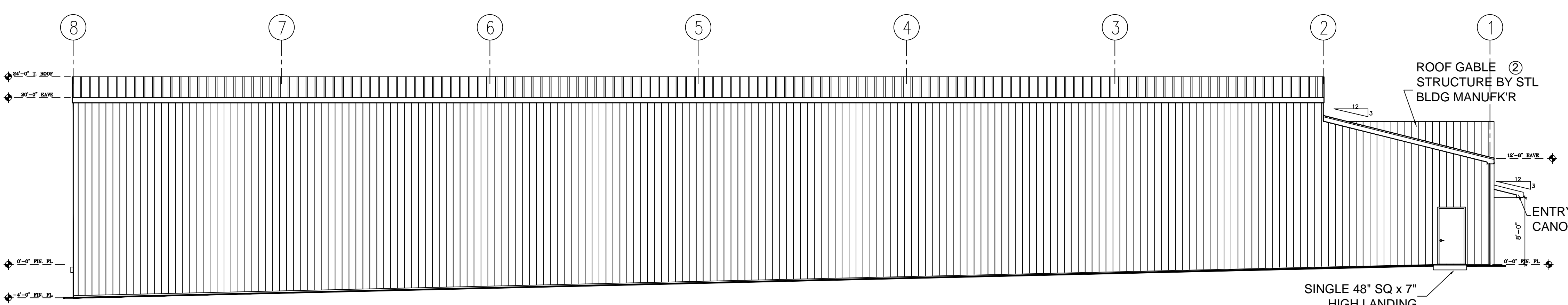
WEST ELEVATION
SCALE: 1/4" = 1'-0"



FLOOR PLAN
SCALE: 1/4" = 1'-0"



SOUTH ELEVATION
SCALE: 1/4" = 1'-0"



NORTH ELEVATION
SCALE: 1/4" = 1'-0"

ARCHITECTURAL ELEMENTS:

1. CANOPY OVER ENTRY
2. ROOF GABLE/DORMER
3. TEXTURES PANEL FINISH
4. PILASTER COLUMNS

COLORS:

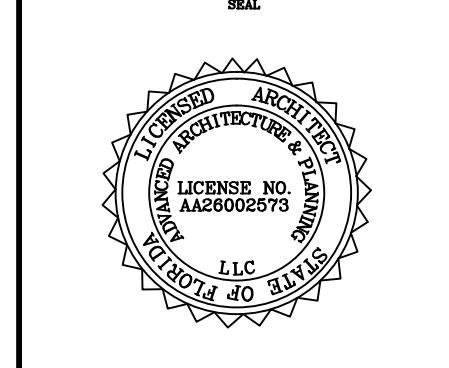
MAIN BODY: AMERICAN BLDGS: SANDSTONE
 FASCIA & SOFFIT: SW 7566 WESTHIGHLAND (WHITE)
 OFFICE WAINSCOTT: AMERICAN BLDGS: FOX GREY
 OFFICE ROOF: AMERICAN BLDGS: AZTEC BLUE



THESE DRAWINGS CONTAIN ARCHITECTURAL SYMBOLS USED FOR GRAPHIC PURPOSES ONLY. SIZE AND LOCATION MAY VARY TO MEET MANUFACTURER'S SPECIFICATIONS. DO NOT SCALE DRAWINGS. ANY QUESTIONS ABOUT DIMENSIONS, CONTACT DESIGNER.

NEW BUILDING - PACIFIC STAR
NW Enterprise Drive

START DATE:	08.19.20
NO. REVISION / ISSUE	DATE
▲ 1ST_REVISION	
▲ 2ND_REVISION	
▲ 3RD_REVISION	
CLIENT:	PACIFIC STAR WHOLESALE, LLC 679 NW Enterprise Drive Unit 103, Port St. Lucie Florida 34986

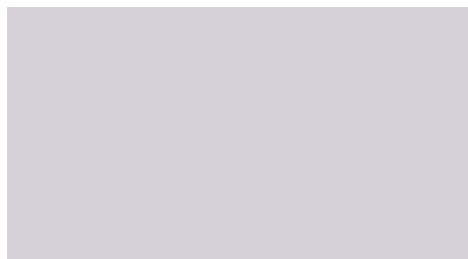


Raymond Chidley
 Licensed Architect #AA-26002573

A-1

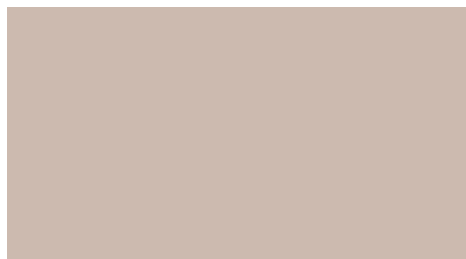
SP Cool Coatings

This cool silicone-polyester paint system utilizes a two-coat system that offers superior quality and durability.



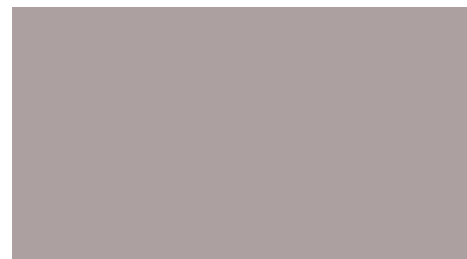
Polar White †

IR .67 SRI 81



Sandstone †

IR .59 SRI 69



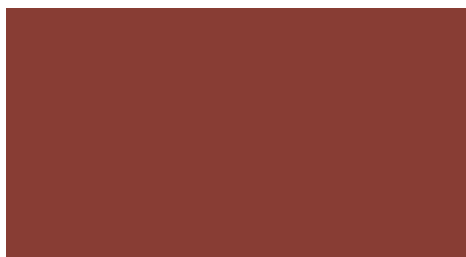
Fox Gray †

IR .51 SRI 58



Sagebrush Tan †

IR .51 SRI 59



Brick Red †

IR .38 SRI 40



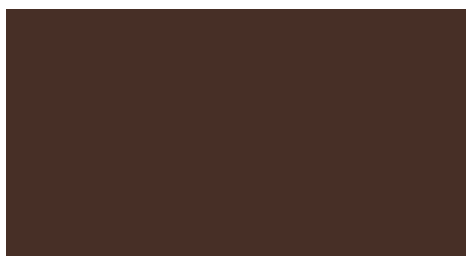
Aztec Blue †

IR .27 SRI 26



Forest Green †

IR .27 SRI 25



Burnished Slate †

IR .32 SRI 32



Galvalume **

IR .77 SRI 72

*Non-Stock Color: Extended lead times may apply. *The Galvalume coating process is likely to result in variances in spangle (size, number, and reflection) from coil to coil which may result in noticeable shade variations. Galvalume is also subject to variable weathering and may appear to have different shades due to weathering characteristics. These shade variations are not cause for rejection. † ENERGY STAR® Qualified Color. All SP colors have a 25-year finish warranty. Colors shown closely approximate actual coating colors. These colors utilize Cool Coating Technology. The term "TBS" on the Order Document refers to "To Be Selected" from standard SP colors as shown on this chart.



SP Cool Coatings

Product Specifications



Solar Reflectance, Thermal Emittance and Solar Reflectance Index (SRI)

Solar Reflectance

To be considered “cool,” products must have a Solar Reflectance of at least .25. Solar Reflectance is the fraction of the total solar energy that is reflected away from a surface.

Thermal Emittance

Thermal Emittance is the measure of a panel’s ability to release heat that it has absorbed.

Solar Reflectance Index (SRI)

Put Solar Reflectance and Thermal Emittance together and you get the Solar Reflectance Index (SRI). SRI is calculated by using the values of solar reflectance, thermal emittance and a medium wind coefficient. The higher the SRI value, the lower its surface temperature and consequently, the heat gain into the building. Metal roofs coated with SP Cool Coatings achieve an SRI of 25-81, depending on the color.

Conventional roof surfaces have low reflectance (0.05 to 0.25) and high thermal emittance (typically over .85). Roof panels with both high reflectance and high emittance can reduce the surface temperature by as much as 30-50% based on color and geographic location, which will result in a reduced heat gain to the building, therefore reducing the energy demand.

GALVALUME® is a registered trademark of BIEC International Inc., and some of its licensed producers.

SP COOL PANEL COLORS

SP Cool Color	Initial Solar Reflectance (IR)	Initial Thermal Emittance	Solar Reflectance Index (SRI)
Polar White	.67	0.83	81
Sandstone	.59	0.84	69
Fox Gray	.51	0.85	58
Sagebrush Tan	.51	0.85	59
Brick Red	.38	0.85	40
Aztec Blue	.27	0.85	26
Forest Green	.27	0.83	25
Burnished Slate	.32	0.85	32
Galvalume®	.77	0.08	72

SP COOL TECHNICAL INFORMATION

Test	Test Methods	Performance
Dry Film Thickness	ASTM D1005	0.15 - 0.30 mil primer 0.70 - 0.90 mil topcoat
Gloss	ASTM D523 @ 60°	10 - 80+
Solar Reflectance	ASTM E903, ASTM E1918 Using portable reflectometer	0.25 (25%) min.
Emissivity	ASTM C1371, ASTM E408	0.80 (80%) min.
Pencil Hardness	ASTM D3363	F min.
Flexibility	T-Bend, ASTM D4145	2 T-bend, No pick off
Adhesion	ASTM D3359	1.5 x metal thickness, No adhesion loss
Reverse Impact	ASTM D2794	2 x gauge or 80 lbs.
Abrasion, Falling Sand	ASTM D968	25 - 40 l/mil
Mortar Resistance	ASTM C267	No effect
Detergent Resistance	ASTM D2248 3% detergent @ 100°F (72 hrs.)	No effect
Acid Resistance	ASTM D1308 10% muriatic acid - 15 min. 20% sulfuric acid - 24 hrs.	No effect No effect
Acid Rain Test	Kesternich SO2, DIN 50018	10 cycles min. No objectionable color change
Alkali Resistance	ASTM D1308 10% , 20% NaOH, 1 hr.	No effect
Salt Spray Resistance	ASTM B117 5% salt fog @ 95°F	Passes 1000 hrs.
Humidity Resistance	ASTM D714, ASTM D2247 100% relative humidity @ 95°F	Passes 1000 hrs. No blisters, cracks or peeling
Exterior Exposure	ASTM D2244, ASTM D4214 10 yrs. @ 45°F, South Florida	Max. 5 fade Max. 8 chalk