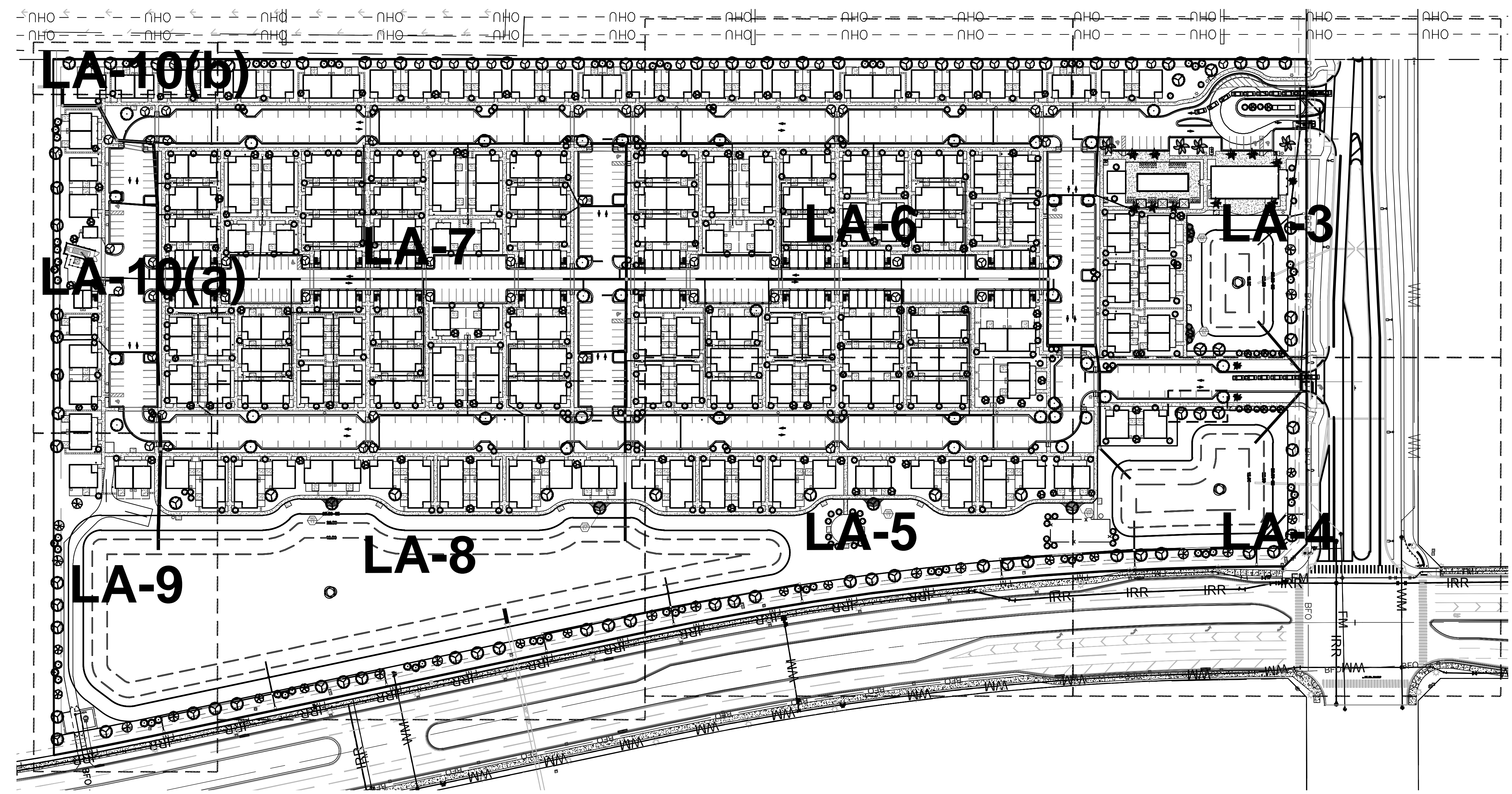


Project Team:
 Owner/Developer:
 Mattamy Homes
 1500 Gateway Blvd, Suite 212
 Boynton Beach, FL 33426
 561-739-7902
 Engineer:
 Kinley-Horn
 445 24th Street, Suite 200
 Vero Beach, FL 32960
 772-794-4100
 Surveyor:
 Caulfield & Wheeler, Inc
 410 SE Port St. Lucie Blvd
 Port St. Lucie, FL 34984
 772-408-1920
 Landscape Architect/Land Planner:
 Lucido & Associates
 701 E Ocean Blvd
 Stuart, FL 34904
 772-220-2100



Capstone Community

Port St. Lucie, Florida

Landscape Modification Plan

January 4, 2022
 City of Port St. Lucie P# 20-141-A1
 PSLUD No. 5367

Date	By	Description
1.4.23	MRY	Initial Submittal
1.23.23	MRY	Increase size of hedge

ACCENTS	QTY	BOTANICAL NAME	COMMON NAME	CONTAINER	HEIGHT	WIDTH	NOTES	NATIVE	CALIPER
CS	3	Callitriche sudanensis	Pink Wintermint	45G	12 HT	6" DIA	STD, F, SP	Non-native	2" Caliper
PM2	3	Phoenix roebelenii	Pinyon Date Palm Multi-Trunk	FG	6" DIA	6" DIA	Triple, Full Heads, SP	Non-native	2" Caliper
FOUNDATION PALMS	QTY	BOTANICAL NAME	COMMON NAME	CONTAINER	HEIGHT	WIDTH	NOTES	NATIVE	CALIPER
SP2	292	Sabal palmetto	Sabal Palm	FG	12-16 CT	16" - 18" HT, 6" GW	HVY CAL, SLK, SP	Native	Non-native
WB	10	Wodyetia bifurcata	Foxtail Palm	FG	12-16 CT	16" - 18" HT, 6" GW	Full Head, Str, Specimen	Native	Non-native
FOUNDATION TREES	QTY	BOTANICAL NAME	COMMON NAME	CONTAINER	HEIGHT	WIDTH	NOTES	NATIVE	CALIPER
IE	24	Ilex x attenuata 'Eggleston'	Eastern Holly	45G	14 HT	6" W	6 CT, STD, SP	Native	2.5" Caliper
LM	79	Lagerstrœmia indica 'Muskogee'	Muskogee Crape Myrtle	45G	14 HT	7" W	6 CT, STD, SP	Native	2.5" Caliper
PARKING LOT PALMS	QTY	BOTANICAL NAME	COMMON NAME	CONTAINER	HEIGHT	WIDTH	NOTES	NATIVE	CALIPER
R2	426	Royal Palm	Royal Palm	FG	6" - 10" OW	6" - 10" OW	F, SP, No Stars	Native	Non-native
SP3	58	Sabal palmetto	Sabal Palm	FG	12-16 CT	12-16 CT	HVY CAL, SLK, SP	Native	Non-native
PARKING LOT TREES	QTY	BOTANICAL NAME	COMMON NAME	CONTAINER	HEIGHT	WIDTH	NOTES	NATIVE	CALIPER
ILE	87	Ilex x attenuata 'Eggleston'	Eastern Holly	45G	14 HT	6" W	6 SPR	Native	2" Caliper
QV	38	Quercus virginiana	Southern Live Oak	45G	14-16 HT	6" W	F, SP	Native	4" Caliper
PERIMETER PALMS	QTY	BOTANICAL NAME	COMMON NAME	CONTAINER	HEIGHT	WIDTH	NOTES	NATIVE	CALIPER
SP	73	Sabal palmetto	Sabal Palm	FG	12-16 CT	12-16 CT	HVY CAL, SP	Native	Non-native
PERIMETER TREES	QTY	BOTANICAL NAME	COMMON NAME	CONTAINER	HEIGHT	WIDTH	NOTES	NATIVE	CALIPER
BAU	15	Bauhinia tobiana	Hong Kong Octree Tree	45G	14 GA	7" W	F, SP	Native	3" Caliper
QV2	95	Quercus virginiana	Southern Live Oak	45G	14-16 HT	6" W	F, SP	Native	4" Caliper
TC	12	Tabebuia ceratiba	Yellow Tabebuia	45G	14 HT	7" W	F, SP	Native	3" Caliper
SHRUBS	QTY	BOTANICAL NAME	COMMON NAME	CONTAINER	HEIGHT	WIDTH	NOTES	NATIVE	CALIPER
AWB	208	Acalypha wilkesiana 'Louisiana Red'	Red Cockspur	45G	24 HT	24" W	FTB, SP	Non-native	Non-native
AO	12	Alcantarea odorata	Giant Silver Bromeliad	7G	30" GA	30" GA	FTB, SP	Non-native	Non-native
AO2	208	Alcantarea odorata	Giant Silver Bromeliad	15G	30" GA	30" GA	FTB, SP	Non-native	Non-native
CHR	740	Chrysobalanus icaco 'Red Tip'	Red Tip Coccoloba	3G	24 HT	18" W	FTB	Native	Non-native
CHR2	4,302	Chrysobalanus icaco 'Red Tip'	Red Tip Coccoloba	3G	24 HT	18" W	F, SP	Native	Non-native
CLU	921	Clusia guiberti	Small Leaf Clusia	15G	4 HT x 3 SPR, STD, SP	2" W	FTB	Non-native	Non-native
COO	426	Cordia alliodora 'Eleanore Roosevelt'	Eleanore Roosevelt Citron	3G	24 HT	24" W	FTB, SP	Non-native	Non-native
COM	2,843	Cordia alliodora 'Eleanore Roosevelt'	Eleanore Roosevelt Citron	3G	24 HT	18" W	FTB, SP	Non-native	Non-native
COO2	426	Cordia alliodora 'Eleanore Roosevelt'	Eleanore Roosevelt Citron	3G	24 HT	24" W	FTB, SP	Non-native	Non-native
CES	202	Conocarpus erectus 'Sericus'	Silver Buttonwood	3G	2 HT	3" W	F, SP	Native	Non-native
CTB2	97	Cordia alliodora 'Eleanore Roosevelt'	Eleanore Roosevelt Citron	3G	2 HT	3" W	F, SP	Native	Non-native
GA2	92	Gardenia jasminoides 'Queen Emma'	Queen Emma Gardenia	7G	30 HT	30" W	F, SP	Non-native	Non-native
CR1	142	Citrus sp.	Green Citrus	7G	24 HT	24" W	STD, SP	Non-native	Non-native
DRT	695	Dianella tasmanica 'Variegata'	Flax Lily	3G	24 HT	2" W	STD, SP	Non-native	Non-native
DES	48	Duranta erecta 'Sepphoris Showers'	Golden Dewdrop Standard	4 HT	2" W	2" W	STD, SP	Non-native	Non-native
QAG	197	Quercus agrifolia	Trinella	3G	24 HT	18" W	F	Non-native	Non-native
HAM	224	Hamelia patens 'Compacta'	Dwarf Firebush	3G	30 HT	30" W	FTB	Non-native	Non-native
IGN	1,104	Isora coccinea 'Non-Giant'	Red Isora	20	18 HT	12" W	SP	Non-native	Non-native
IAT	122	Isora coccinea 'Non-Giant'	Dwarf Isora	3G	2 HT	2" W	STD, SP	Non-native	Non-native
JAT	74	Jasminum integrifolium	Jasmine	7G	24 HT	18" W	F	Non-native	Non-native
MUH	450	Muhlenbergia capillaris	Pink Muhly	1G	24 HT	18" W	F	Non-native	Non-native
NBR	16	Neonargia 'Cruella Red'	Red Chamaelirium	20	18 HT	12" W	SP	Non-native	Non-native
NIN	17	Neonargia 'Blossa Noug'	Blossa Nova Bromeliad	23	18 HT	12" W	SP	Non-native	Non-native
PSW	219	Persea indica 'White'	White Fountain Grass	3G	24 HT	24" W	FTB, SP	Non-native	Non-native
RCL	56	Rondeletia incognita	Panama Rose Pink	3G	24 HT	24" W	F	Non-native	Non-native
SAR	3,804	Scaevola taccada	Blue Pinnerhead	3G	24 HT	24" W	F	Non-native	Non-native
STU	198	Styphelia pentandra	Bird Of Paradise	3G	2 HT	3" W	F, SP	Non-native	Non-native
STR	97	Streptocarpus	Florida Garden Grass	1G	24 HT	18" W	F	Native	Non-native
TRF	158	Tripsacum dactyloides	Fakahatchee Grass	1G	24 HT	18" W	F	Native	Non-native
SHRUB AREAS	TRD	BOTANICAL NAME	COMMON NAME	CONTAINER	HEIGHT	WIDTH	NOTES	NATIVE	CALIPER
	26	Tripsacum dactyloides	Fakahatchee Grass	1G	24 HT	18" W	Full	Native	48" o.c.
GRASSES	QTY	BOTANICAL NAME	COMMON NAME	CONTAINER	HEIGHT	WIDTH	NOTES	NATIVE	CALIPER
SP6	212	Sporobolus vaginatus	Sand Cogon Grass	1G	18" GA	18" GA	Full	Native	24" o.c.
GROUND COVERS	QTY	BOTANICAL NAME	COMMON NAME	CONTAINER	HEIGHT	WIDTH	NOTES	NATIVE	CALIPER
GF	4,669	Ficus microcarpa 'Green Island'	Green Island Ficus	1G	12 HT	12 HT	Full	Non-native	24" o.c.
JUP	7,327	Juniperus chinensis 'Parsoni'	Parsoni Juniper	1G	10 HT	10" SPR	Full	Non-native	24" o.c.

Required Trees:	Native%	# of Species	Flowering%	Drought Tolerant%	Palm%
Perimeter: (4,816/30)	161	50% = 81			50% = 81 (Max)
Building(s) Foundation Perimeter: (6,431/30)	214	50% = 107			100% = 107 (Max)
Parking Lot Terminal Landscape Islands:	100	75% = 75			50% = 50 (Max)
Total:	475	263	5	20% = 53	50% = 132

Provided Trees:	Native	# of Species	Flowering	Drought Tolerant	Palm
Total:	478	372	9	106	372

Required Shrubs:	Native%	Drought Tolerant%
Perimeter: (4,816/2)	2,408	25% = 602
Building(s) Foundation Perimeter: (6,431/1.5)	4,287	25% = 1,072
Total:	6,695	1,674

Provided Shrubs:	Native	Drought Tolerant
Total:	17,552	9,880

General Landscape Notes:

- At least 50% of all required trees shall be of a native species. All plant material to be Florida No. 1 or better. All landscape & sod areas to be irrigated by an automated system that provides 100% coverage with 100% overlap with a minimum D.U. of .70.
- All landscaping at intersection and corners complies with Section 158.204 of the Port St Lucie Code of Ordinances to provide a clear sight zone between 2' - 6' above the final road crown elevation. All hedges and shrubs within the 25' sight triangle will be maintained at a height no higher than 2' above the crown elevation of the road. In addition, the foliage line any tree within the 25' sight triangle will be maintained at a height of no less than 6' above the road crown.
- Existing landscape material noted for relocation may be substituted with new planting if construction schedule inhibits relocation.

PSLUSD Notes for Landscape Plans

- All new landscaping within utility easements and within ten (10) feet of underground utility infrastructure shall comply with PSLUSD technical specifications, policies, and codes.
- No landscaping other than sod grasses may be planted within a 5' radius maintenance area of any utility appurtenances such as water meters, backflow devices, fire hydrants, sanitary sewer cleanouts, and manholes, air release valves, etc. Trees shall not be planted within ten (10) feet of any underground infrastructure.
- No landscaping shall be planted in such a manner as to adversely affect utility installation, operation and maintenance.

Index of Drawings:

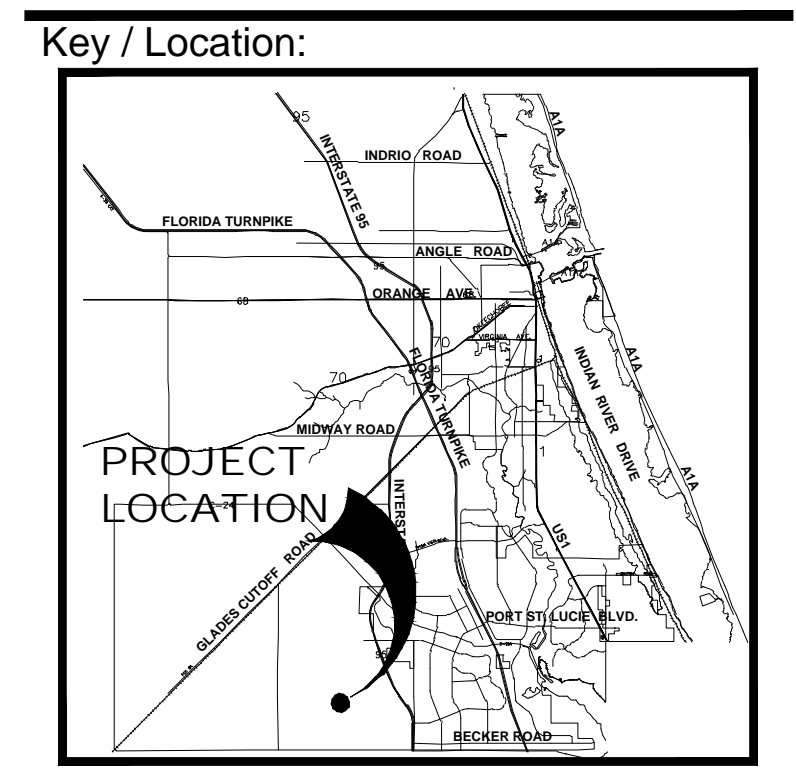
Landscape Data	LA1
Plant Schedule	LA2
Landscape Plans	LA3 - LA10
Landscape Details	LA11
Landscape Specifications	LA12

SCALE: 1" = 80'

REG. # 1018
Thomas P. Lucido

Designer: BW Sheet
 Manager: MRY
 Project Number: 20-370
 Municipal Number: P20-141-A1
 Computer File: Capstone - Landscape Modification.dwg

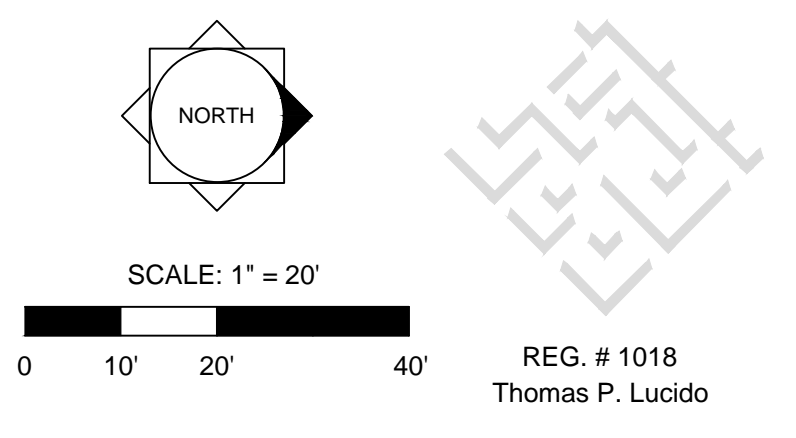
LA1



Project Team:
 Owner/Developer:
 Mattamy Homes
 1500 Gateway Blvd, Suite 212
 Boynton Beach, FL 33426
 561-739-7902
 Engineer:
 Kinley-Horn
 445 24th Street, Suite 200
 Vero Beach, FL 32960
 772-794-4100
 Surveyor:
 Caulfield & Wheeler, Inc
 410 SE Port St. Lucie Blvd
 Port St. Lucie, FL 34984
 772-408-1920
 Landscape Architect/Land Planner:
 Lucido & Associates
 701 E Ocean Blvd
 Stuart, FL 34904
 772-220-2100

Capstone Community
 Port St. Lucie, Florida
Landscape Modification Plan
 January 4, 2022
 City of Port St. Lucie P# 20-141-A1
 PSLUD No. 5367

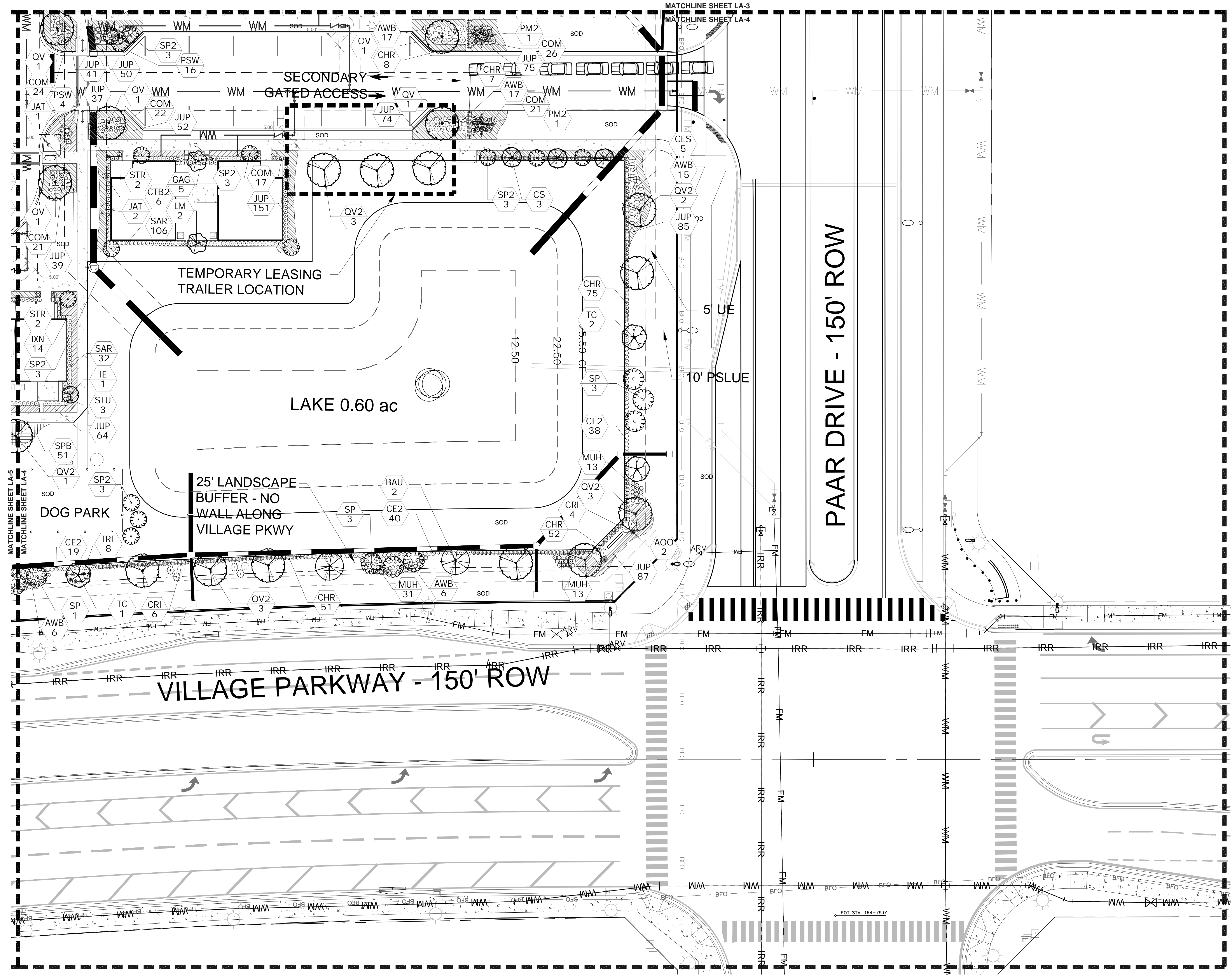
Date	By	Description
1.4.23	MRY	Initial Submittal
1.23.23	MRY	Increase size of hedge

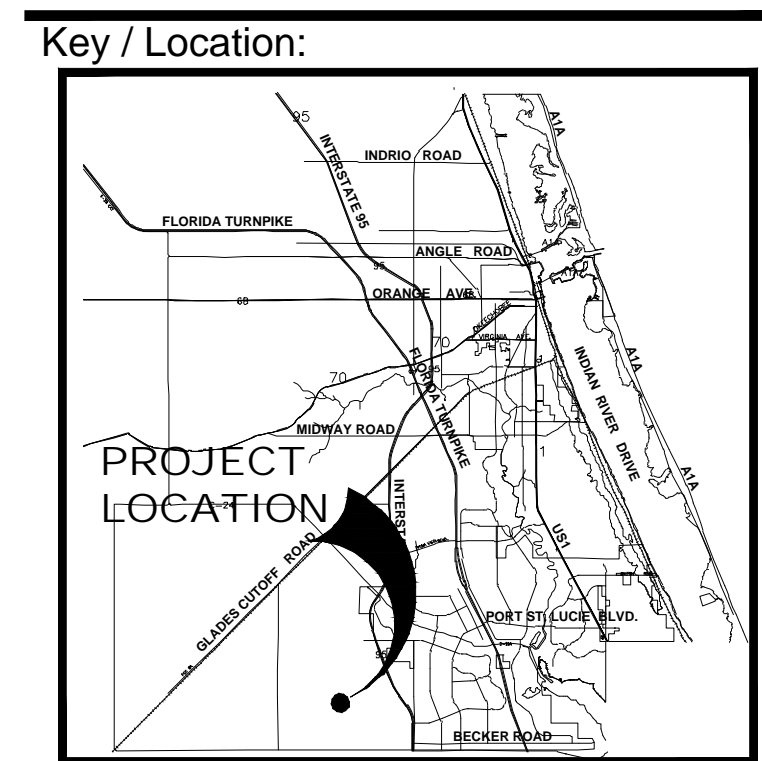
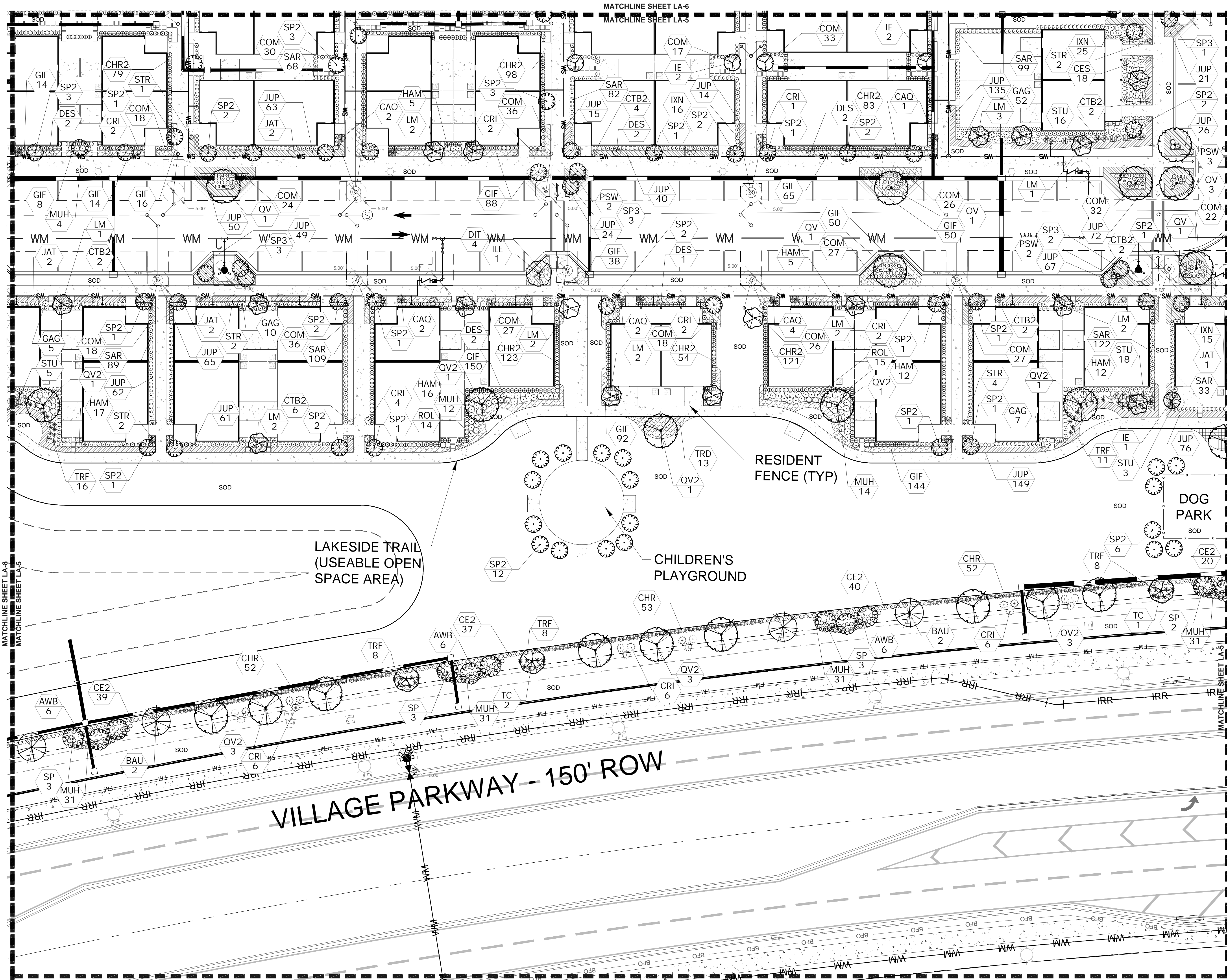


REG. # 1018
 Thomas P. Lucido

Designer	BW	Sheet
Manager	MRY	
Project Number	20-370	
Municipal Number	P20-141-A1	
Computer File	Capstone - Landscape Modification.dwg	

© Copyright Lucido & Associates. These documents and their contents are the property of Lucido & Associates. Any reproductions, revisions, modifications or use of these documents without the express written consent of Lucido & Associates is prohibited by law.





Project Team:
 Owner/Developer:
 Mattamy Homes
 1500 Gateway Blvd, Suite 212
 Boynton Beach, FL 33426
 561-739-7902
 Engineer:
 Kinley-Horn
 445 24th Street, Suite 200
 Vero Beach, FL 32960
 772-794-4100
 Surveyor:
 Caulfield & Wheeler, Inc
 410 SE Port St. Lucie Blvd
 Port St. Lucie, FL 34984
 772-408-1920
 Landscape Architect/Land Planner:
 Lucido & Associates
 701 E Ocean Blvd
 Stuart, FL 34904
 772-220-2100

Capstone Community
 Port St. Lucie, Florida
Landscape Modification Plan
 January 4, 2022
 City of Port St. Lucie P# 20-141-A1
 PSLUD No. 5367

Date	By	Description
1.4.23	MRY	Initial Submittal
1.23.23	MRY	Increase size of hedge

NORTH

SCALE: 1" = 20'

REG. # 1018
Thomas P. Lucido

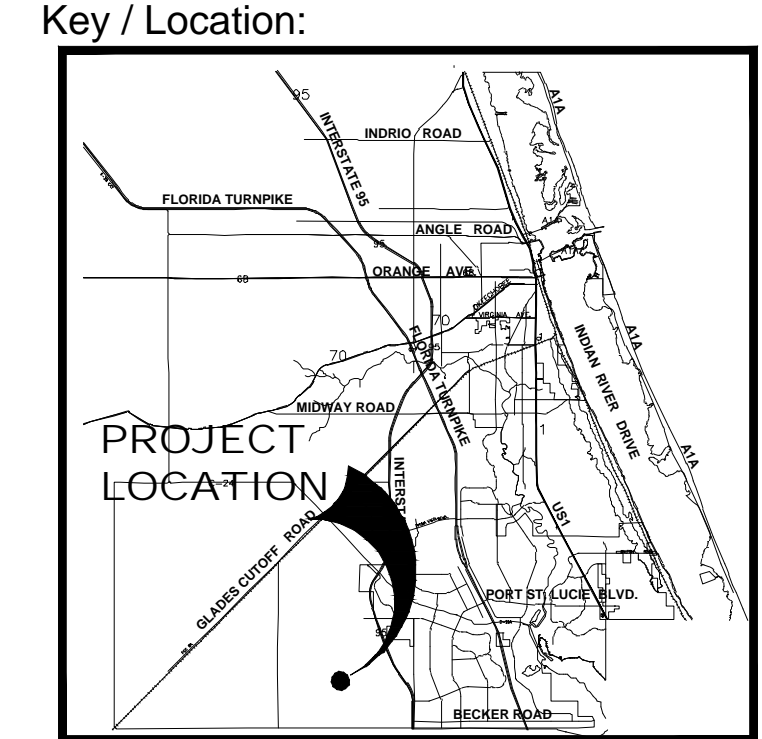
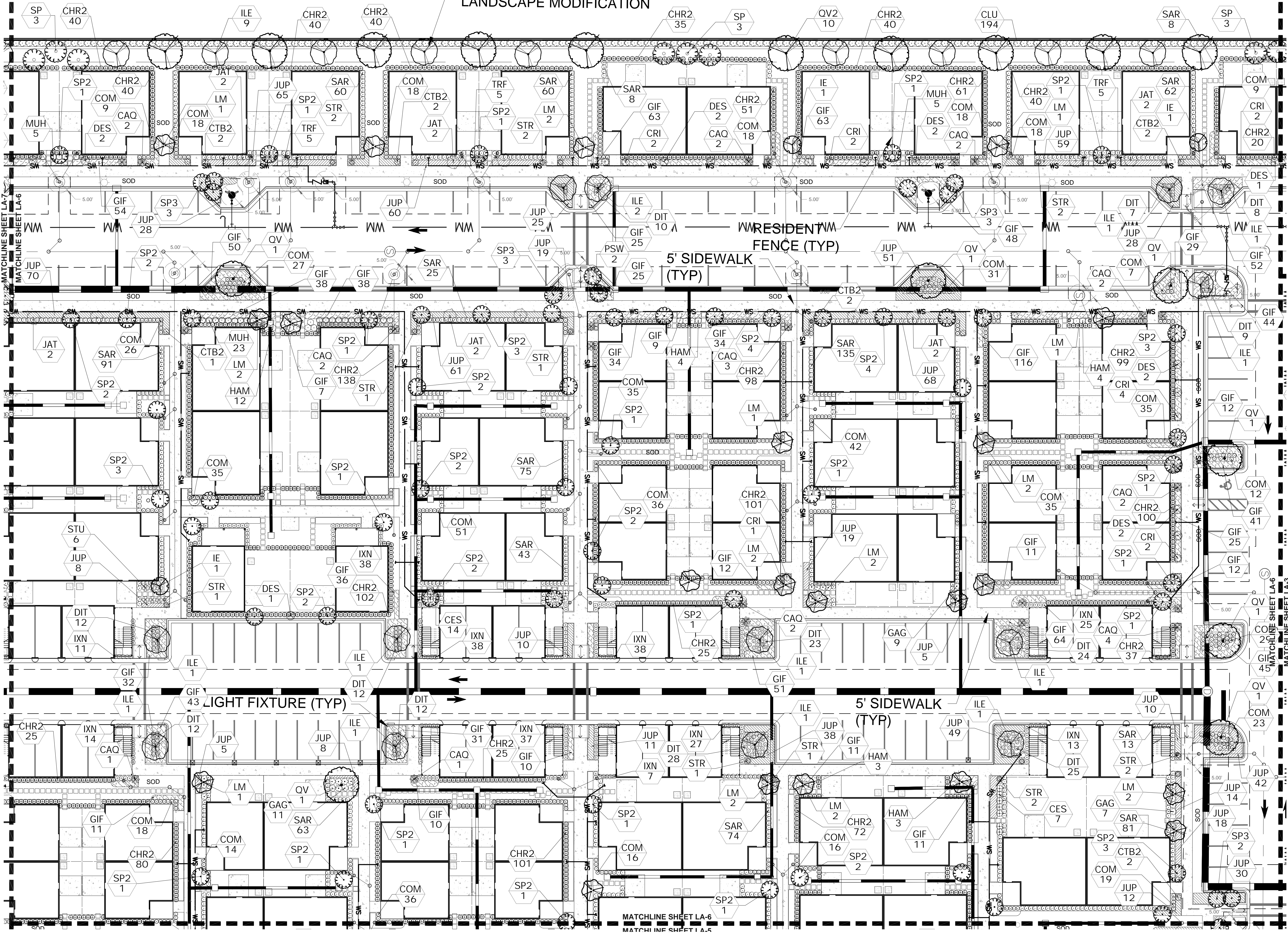
Designer BW Sheet
 Manager MRY
 Project Number 20-370
 Municipal Number P20-141-A1
 Computer File Capstone - Landscape Modification.dwg

LA5

© Copyright Lucido & Associates. These documents and their contents are the property of Lucido & Associates. Any reproductions, revisions, modifications or use of these documents without the express written consent of Lucido & Associates is prohibited by law.

LAND USE: NCD
 ZONING: SLC AG-5
 CURRENT USE: VACANT

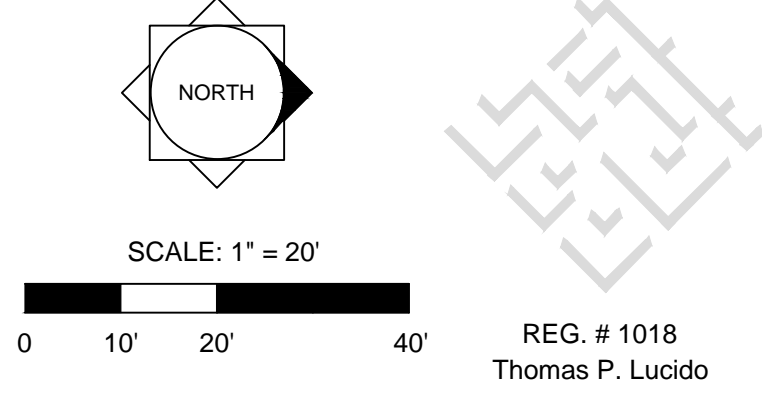
6' WALL MAY BE ELIMINATED VIA
 LANDSCAPE MODIFICATION



Project Team:
 Owner/Developer:
 Matmany Homes
 1500 Gateway Blvd, Suite 212
 Boynton Beach, FL 33426
 561-739-7902
 Engineer:
 Kinley-Horn
 445 24th Street, Suite 200
 Vero Beach, FL 32960
 772-794-4100
 Surveyor:
 Caulfield & Wheeler, Inc
 410 SE Port St. Lucie Blvd
 Port St. Lucie, FL 34984
 772-408-1920
 Landscape Architect/Land Planner:
 Lucido & Associates
 701 E Ocean Blvd
 Stuart, FL 34904
 772-220-2100

Capstone Community
 Port St. Lucie, Florida
Landscape Modification Plan
 January 4, 2022
 City of Port St. Lucie P# 20-141-A1
 PSLUD No. 5367

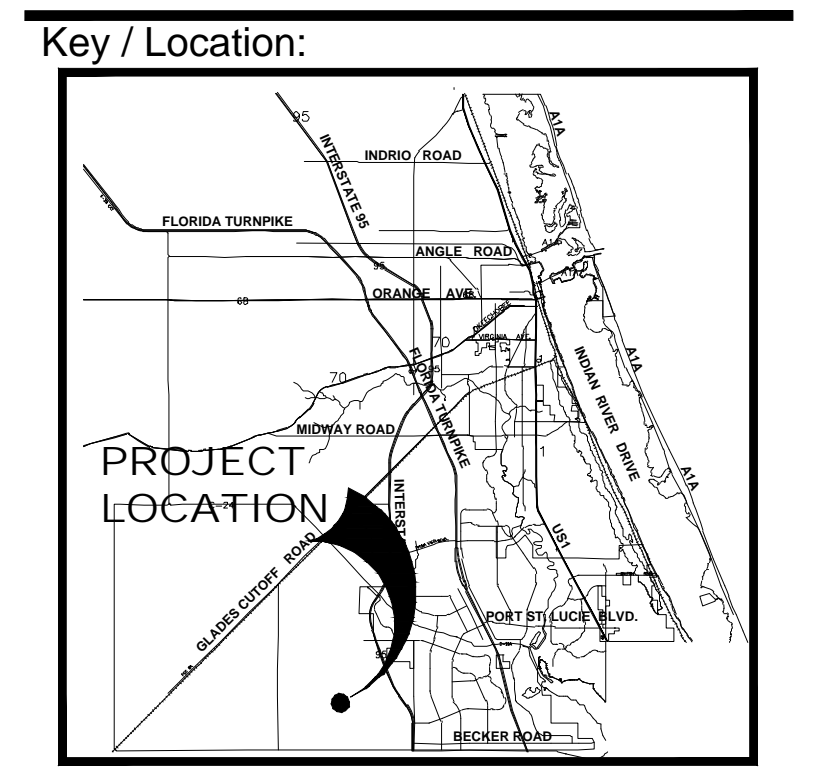
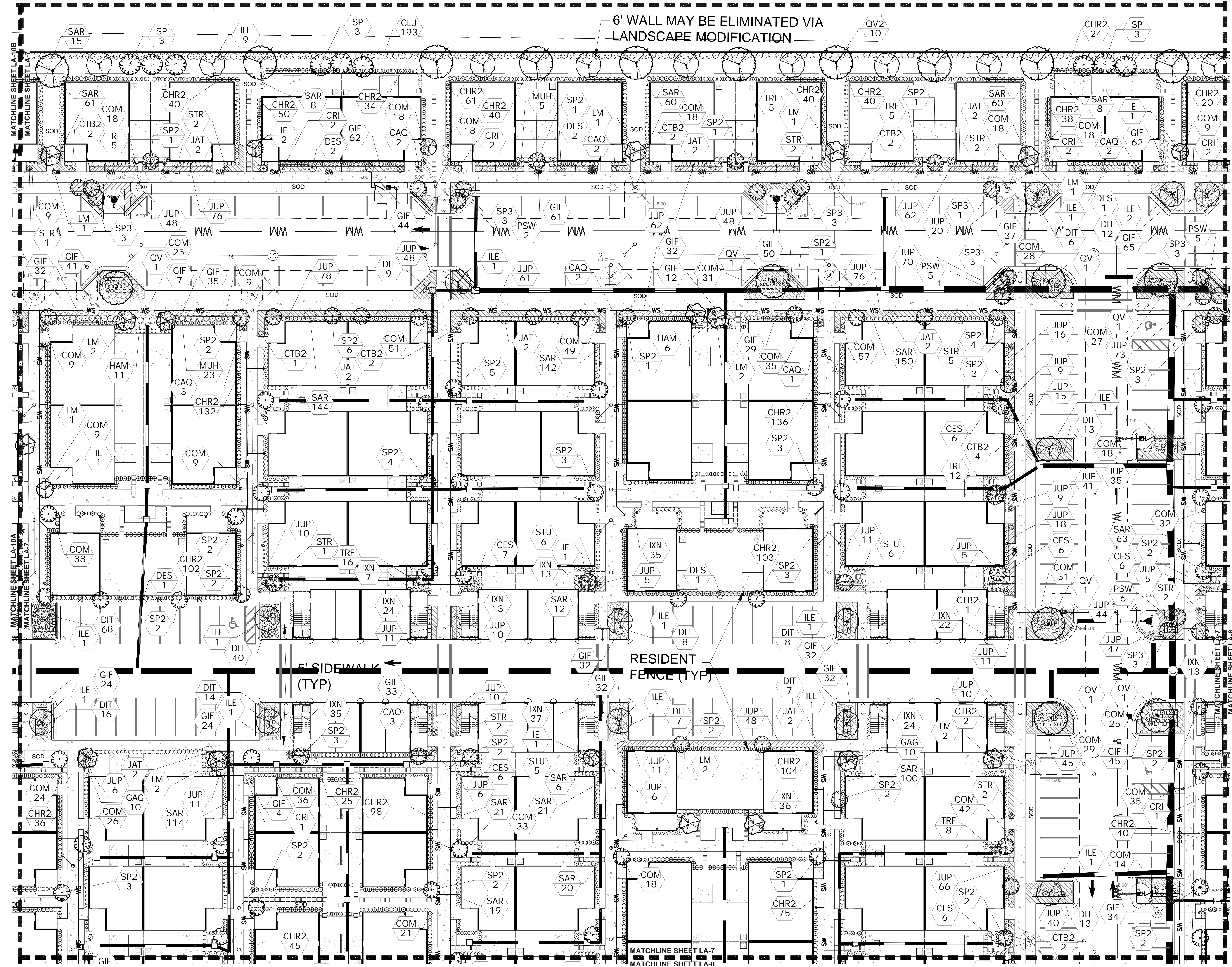
Date	By	Description
1.4.23	MRY	Initial Submittal
1.23.23	MRY	Increase size of hedge



REG. # 1018
 Thomas P. Lucido

Designer	BW	Sheet
Manager	MRY	
Project Number	20-370	LA6
Municipal Number	P20-141-A1	
Computer File	Capstone - Landscape Modification.dwg	

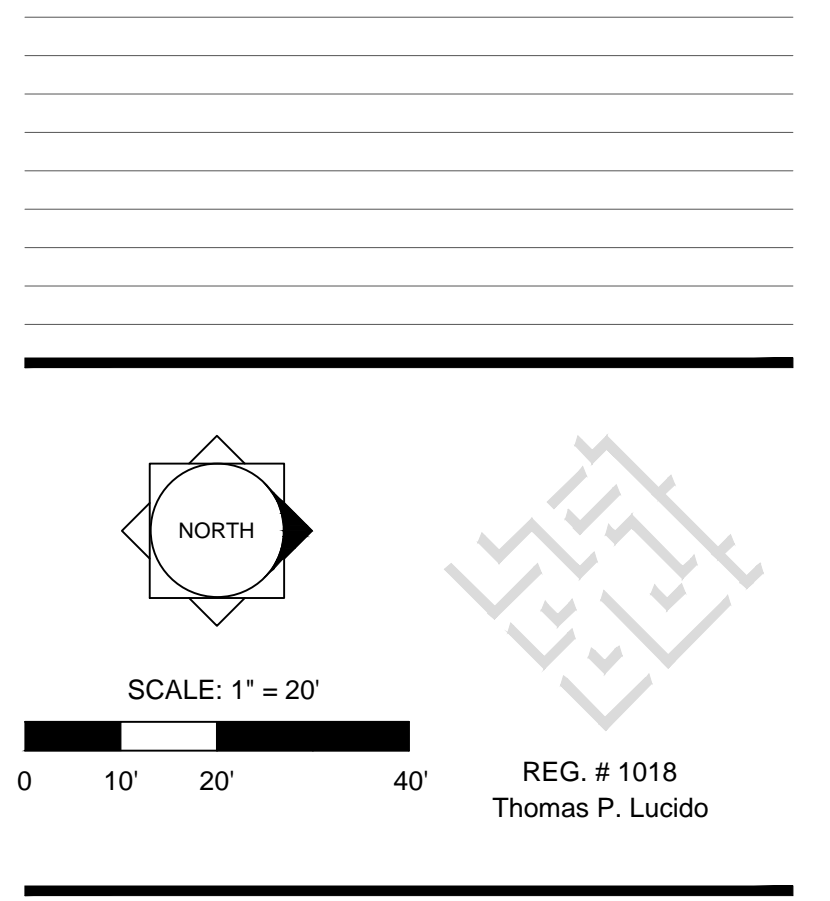
© Copyright Lucido & Associates. These documents and their contents are the property of Lucido & Associates. Any reproductions, revisions, modifications or use of these documents without the express written consent of Lucido & Associates is prohibited by law.



Project Team:
 Owner/Developer:
 Mattamy Homes
 1500 Gateway Blvd, Suite 212
 Boynton Beach, FL 33426
 561-739-7902
 Engineer:
 Kimley-Horn
 445 24th Street, Suite 200
 Vero Beach, FL 32960
 772-794-4100
 Surveyor:
 Caulfield & Wheeler, Inc
 410 SE Port St. Lucie Blvd
 Port St. Lucie, FL 34984
 772-408-1920
 Landscape Architect/Land Planner:
 Lucido & Associates
 701 E Ocean Blvd
 Stuart, FL 34904
 772-220-2100

Capstone Community
 Port St. Lucie, Florida
Landscape Modification Plan
 January 4, 2022
 City of Port St. Lucie P# 20-141-A1
 PSLUD No. 5367

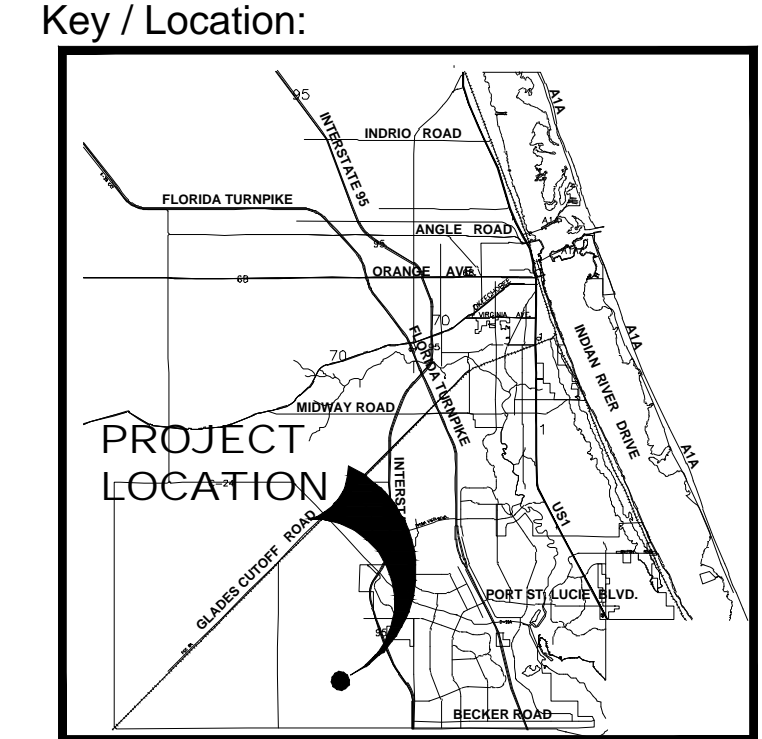
Date	By	Description
1.4.23	MRY	Initial Submittal
1.23.23	MRY	Increase size of hedge



Designer: BW Sheet
 Manager: MRY
 Project Number: 20-370
 Municipal Number: P20-141-A1
 Computer File: Capstone - Landscape Modification.dwg

LA7

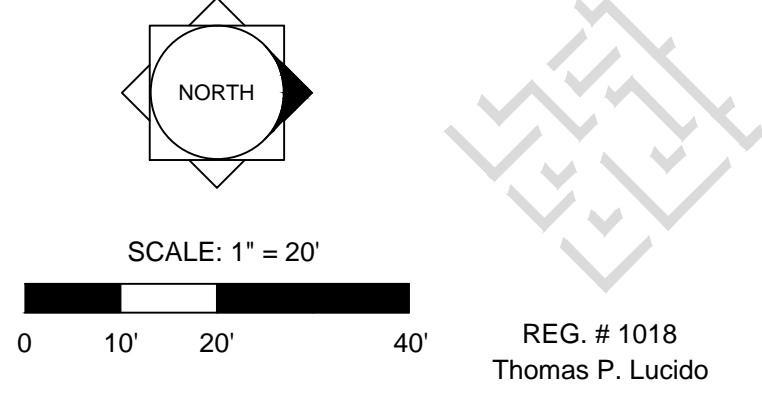
© Copyright Lucido & Associates. These documents and their contents are the property of Lucido & Associates. Any reproductions, revisions, modifications or use of these documents without the express written consent of Lucido & Associates is prohibited by law.



Project Team:
 Owner/Developer:
 Mattamy Homes
 1500 Gateway Blvd, Suite 212
 Boynton Beach, FL 33426
 561-739-7902
 Engineer:
 Kimley-Horn
 445 24th Street, Suite 200
 Vero Beach, FL 32960
 772-794-4100
 Surveyor:
 Caulfield & Wheeler, Inc
 410 SE Port St. Lucie Blvd
 Port St. Lucie, FL 34984
 772-408-1920
 Landscape Architect/Land Planner:
 Lucido & Associates
 701 E Ocean Blvd
 Stuart, FL 34904
 772-220-2100

Capstone Community
 Port St. Lucie, Florida
Landscape Modification Plan
 January 4, 2022
 City of Port St. Lucie P# 20-141-A1
 PSLUD No. 5367

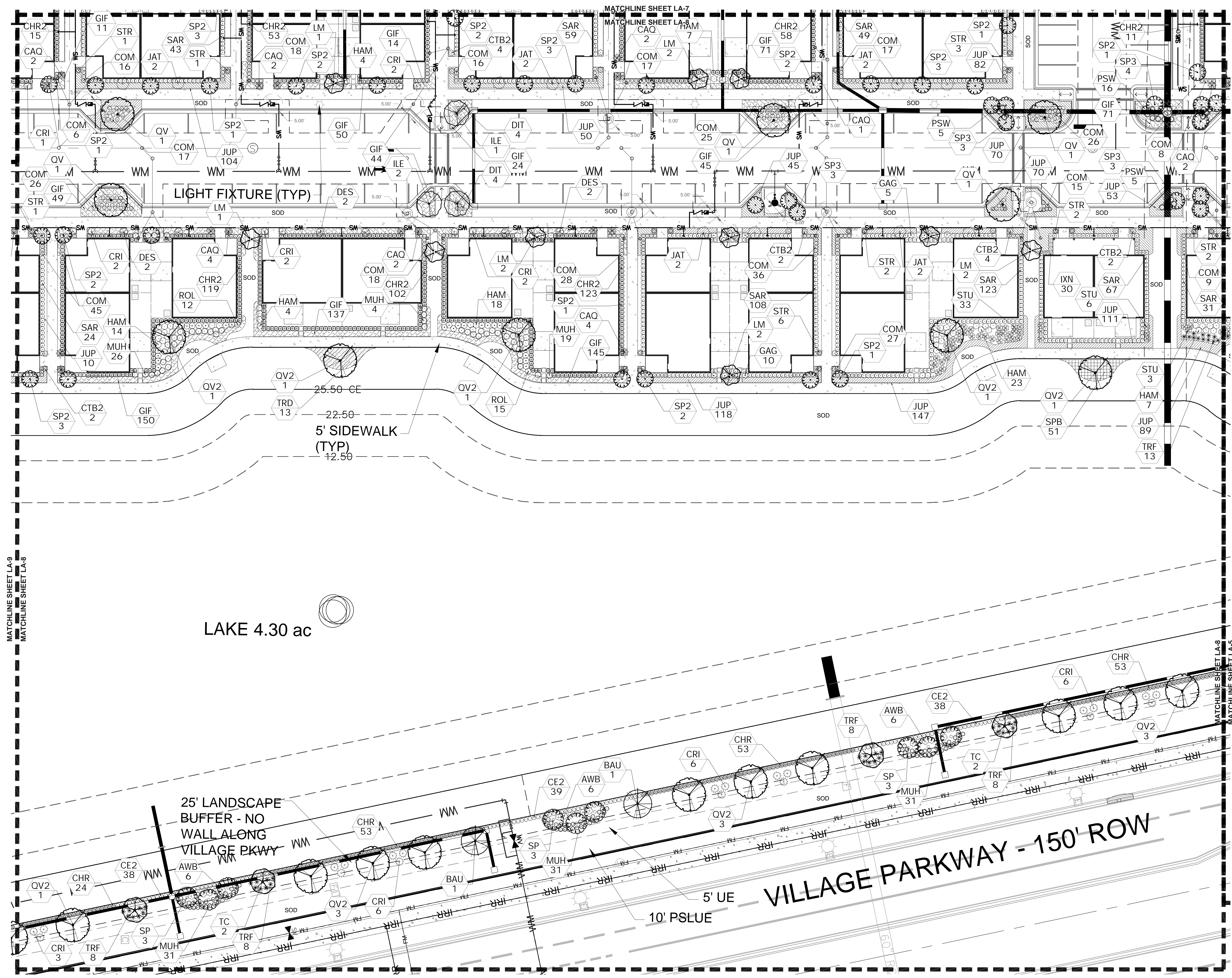
Date	By	Description
1.4.23	MRY	Initial Submittal
1.23.23	MRY	Increase size of hedge



REG. # 1018
 Thomas P. Lucido

Designer: BW Sheet
 Manager: MRY
 Project Number: 20-370
 Municipal Number: P20-141-A1
 Computer File: Capstone - Landscape Modification.dwg

LA8



MATCHLINE SHEET LA-9
MATCHLINE SHEET LA-8

MATCHLINE SHEET LA-8
MATCHLINE SHEET LA-5

© Copyright Lucido & Associates. These documents and their contents are the property of Lucido & Associates. Any reproductions, revisions, modifications or use of these documents without the express written consent of Lucido & Associates is prohibited by law.

Drawing Name: C:\Users\myates\AppData\Local\Temp\AcPublish\Local\Temp\AcPublish_19376\ Jan 23, 2023 - 1:09pm Capstone - Landscape Modification.dwg

LANDSCAPE SPECIFICATIONS

PART 1: GENERAL CONDITIONS

- 1.01 SCOPE: The Landscape contract includes the supplying and planting of all trees, shrubs, vines, and ground cover together with all necessary labor, equipment, tools and materials needed for the successful completion, execution and maintenance of the landscape plans.
1.02 AGENCY STANDARDS: Grades and standards of plant materials to be used shall be true to name, size, condition and graded Florida #1 or better as stated in: Grades and Standards of Florida Plant Materials published by the State of Florida Department of Agriculture, Tallahassee, Florida.
1.03 SITE EXAMINATION: The Landscape Contractor shall personally examine the site and fully acquaint him/herself with all of the existing conditions in order that no mis-understanding may afterwards arise as to the character or extent of the work to be performed, and, additionally, in order to acquaint him/herself with all precautions to be taken in order to avoid injury to property or persons.
1.04 ERRORS AND OMISSIONS: The plant list is a part of the drawings and is furnished as a convenience. The plant list indicates the name, size and quantities of specific plant materials as called for and is located on the drawings.
1.05 EXECUTION OF THE WORK: The Landscape Contractor shall have his labor crews controlled and directed by a Foreman well versed in plant materials, planting methods, reading plans, and coordination between job and nursery in order to execute installation correctly and in a timely manner.
1.06 PROTECTION OF PUBLIC AND PROPERTY: The Landscape Contractor shall protect all materials and work against injury from any cause and shall provide and maintain all necessary safeguards for the protection of the public.
1.07 CHANGES AND EXTRAS: The Contractor shall not start work on any changes or "extras" in the project until a written agreement setting forth the adjusted prices has been executed by the Owner and the Contractor.
1.08 GUARANTEE: The Landscape Contractor shall furnish a written guarantee warranting all materials, workmanship and plant materials, except sod, for a period of 18 MONTHS from the time of completion and acceptance by the Landscape Architect and Owner.
1.09 CARE AND MAINTENANCE: The Landscape Contractor shall be responsible for the care and maintenance of all plant materials and irrigation when applicable until final acceptance by the Owner or Landscape Architect.
1.10 SAFETY: It shall be the responsibility of the Landscape Contractor to protect all persons from injury and to avoid property damage.
1.11 CONTRACTOR QUALIFICATION: The Owner may require the apparent contractor (s) to qualify him/herself to be a responsible entity by furnishing any or all of the following documentary data:
1.12 INSURANCE AND BONDING: The contractor (s) shall submit proof of insurance for this job for the time period that the work is done.
1.13 PERMITS AND CERTIFICATES: All contractors shall secure and pay for all permits and certificates required for his/her class of work.

PART 2: MARTERIALS

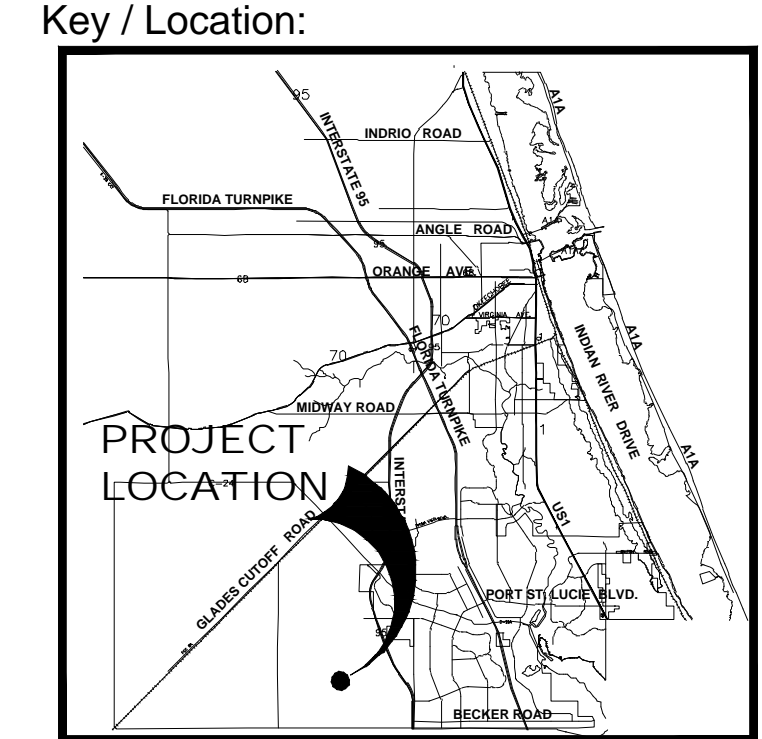
- 2.01 PLANT MATERIALS: A complete list of plants is shown on the drawings, including a schedule of quantities, sizes, and such other requirements deemed necessary.
B. Substitutions: Substitutions of plant materials or changes in size or spacing of materials will be permitted ONLY upon written authorization by the Owner or the Landscape Architect.
C. All plant materials shall have a habit of growth that is normal for the species and shall be healthy, vigorous and equal to or exceed the measurements specified in the plant list, which are the minimum acceptable sizes.
D. All plant materials shall be nursery grown, unless otherwise noted, Florida #1 or better and shall comply with all required inspections, grading standards and plant regulations as set forth by the Florida Department of Agriculture's Grades and Standards for Nursery Plants, most current addition and Grades and Standards for Nursery Plants, most current addition.
E. Plants that do not have the normal balance of height and spread typical for the respective plant shall not be acceptable.
F. The Landscape Contractor shall install each plant to display its best side. Adjustments may be required if plants are not installed properly and/or approved by the Landscape Architect at no additional cost to owner.

2.02 INSPECTION

- A. The Landscape Architect and Owner may inspect trees and shrubs at place of growth or at site before planting, for compliance with requirements for genus, species, variety, size and quality.
B. PROTECTION OF PLANT MATERIALS: Balled and burlapped plants (B & B) shall be dug with firm natural balls of earth of sufficient diameter and depth to encompass the fibrous and feeding root system necessary for full recovery of the plant.
C. All plant material shall be protected from possible bark injury or breakage of branches.
D. Plants which cannot be planted immediately on delivery to the site shall be covered with moist soil, mulch or other protection from the drying of wind and sun.
2.04 STORAGE: All plant materials shall be stored on the site in designated areas, specified by the Landscape Architect or Owner's agent.
A. No plant material shall be stored longer than seventy-two (72) hours unless approved by Landscape Architect and/or owner.
C. The Landscape Architect reserves the right to reject any plant materials not in conformance with these specifications.
D. All rejected material shall be immediately removed from the site and replaced with acceptable material at no cost to the Owner.
2.05 PROTECTION DURING PLANTING: Trees moved by winch or crane shall be thoroughly protected from chain marks, girdling or bark slippage by means of burlap, wood battens or other approved methods.
2.06 TOP SOIL: Planting soil for all plantings shall consist of topsoil and be natural, friable, fertile, fine loamy soil possessing characteristics of representative topsoil in the vicinity of the project site.
B. Landscape Area Preparation. The intent of this section is to ensure a healthy growing environment for all planting material in all landscaped areas.
2.07 FERTILIZER: Commercial fertilizer shall comply with the state and local fertilizer laws.
A. Thoroughly mixed 3 lbs. of commercial fertilizer to each cubic yard of planting soil.
B. Tableted fertilizer shall be Agriform planting tablets 20-10-5 formula, 21 gram or equal.
C. Large tubs, wire baskets, grow bags, and balled and burlapped material shall have 1 tablet for each 1/2 inch of trunk diameter.
2.08 MULCH: Mulch material shall be clean, dry, free of weeds, seeds and pests, moistened at the time of application to prevent wind displacement.
B. All trees and shrub beds shall receive 3" mulch immediately after planting and thoroughly watered.
PART 3 EXECUTION
3.01 DIGGING: The Landscape Contractor shall exercise care in digging and other work so as not to damage existing work, including overhead wires, underground pipes and cables and the pipes and hydrants of watering systems.
3.02 GRADING: Grading for drainage, swales, etc. to within 4 inches of the finished grade to be provided by others.
B. It shall be the responsibility of the Landscape Contractor to provide the final grading during the course of landscape installation so as to bring sod and planting areas to their proper elevations in relation to walks, paving, drain structures, and other site conditions.
3.03 PLANTING: Planting shall take place during favorable weather conditions.
B. The Contractor shall call for utility locates and ascertain the location of all utilities and easements so proper precautions can be taken not to damage or encroach on them.
C. Tree Planting shall be located where it is shown on the plan.
D. Excavation of holes shall extend to the required subgrades as specified on the planting diagrams located in the landscape plans.
E. A representative number of planting pits (a minimum of one in every 25 feet throughout the entire site) shall be tested for proper drainage.
F. Planting pits shall be excavated to the following dimensions and backfilled with Topsoil- see Landscape Area Preparation Detail:
G. No planting or laying of sod shall be initiated until the area has been cleaned of existing sod or other plant materials, rough grass, weeds, debris, stones etc. and the ground has been brought to an even grade, with positive drainage away from buildings and towards drain inlets and swales and approved by Landscape Architect or owner's rep.
H. Each plant shall be planted in an individual hole as specified for trees, shrubs, and vines.

- I. All plants shall be set to ultimate finished grade. No filling will be permitted around trunks or stems.
J. All flagging ribbon shall be removed from trees and shrubs before planting.
K. Excess excavation (fill) from all holes shall be removed from the site, at no additional expense to Owner.
L. All palms shall be backfilled with sand, thoroughly washed in during planting operations and with a shallow saucer depression left at the soil line for future watering's.
3.04 PRUNING: Remove dead and broken branches from all plant material.
B. Make all cuts with sharp instruments flush with trunk or adjacent branch, in such a manner as to insure elimination of stubs.
C. Trees shall not be poled or topped.
D. Remove all trimming from site.
3.05 GUYING:
A. All trees over six (6) feet in height shall, immediately after setting to proper grade, be guyed with three sets of two strands, No. 12 gauge malleable galvanized iron, in tripod fashion.
B. Wires shall not come in direct contact with the tree but shall be covered with an approved protection device at all contact points.
C. Stake & Brace all trees larger than 12" ca.
D. Turnbuckles for guying trees shall be galvanized or cadmium plated and shall be of adequate size and strength to properly maintain tight guy wires.
3.06 WATER: Each plant or tree shall be thoroughly watered in after planting.
B. Prior to installing any irrigation system components, the contractor shall obtain a water sample from the proposed water supply and conduct a particle size and count analysis on the sample using the services of a reputable lab certified in such analysis.
3.07 SOD: The Landscape Contractor shall sod all areas indicated on the drawings.
B. It shall be the responsibility of the Landscape Contractor to fine grade all landscape areas, eliminating all bumps, depressions, sticks, stones, and other debris.
C. The sod shall be firm, tough texture, having a compacted growth of grass with good root development.
D. Before being cut and lifted, the sod shall have been mowed at least three times with a lawn mower, with the final mowing not more than seven days before the sod is cut.
E. 6-6-6 fertilizer with all trace elements is to be applied at the rate of 40 lbs. per 1,000 sq. ft.
F. Solid sod shall be laid with closely abutting, staggered joints with a tamped or rolled, even surface.
G. The finished level of all sod areas after settlement shall be one (1") inch below the top of abutting curbs, walks, paving and wood borders to allow for building turf.
H. If in the opinion of the Landscape Architect, top dressing is necessary after rolling, clean yellow sand will be evenly applied over the entire surface and thoroughly washed in.
3.08 SEEDING: The Landscape Contractor shall remove all vegetation and rocks larger than (1") in diameter from areas to be seeded, scarify the area, then apply fertilizer at a rate of 500 lbs. per acre.
B. Application: Argentine Bahia Grass seed- 200 Pounds per acre mixed with common hulled Bermuda seed- 30 lbs. per acre.
C. Roll immediately after seeding with a minimum 500 pound roller, then apply straw mulch at the rate of 2,500 pounds per acre.
D. Apply fertilizer at the rate of 150 lbs. per acre 45-60 days after seeding.
3.09 CLEANING UP: The contractor shall at all times keep the premises free from accumulations of waste materials or rubbish caused by his employees or work.
3.10 MAINTENANCE: Maintenance shall begin immediately after each plant is installed and shall continue until all planting has been accepted by the Owner or Landscape Architect.
B. Proper protection to lawn areas shall be provided and any damage resulting from planting operations shall be repaired promptly.
C. Replacement of plants during the maintenance period shall be the responsibility of the Contractor, excluding vandalism or damage on the part of others, lighting, or hurricane force winds, until final acceptance.
D. In the event that weeds or other undesirable vegetation become prevalent, it shall be the Contractor's responsibility to remove them.
E. Trees or other plant material which fall or are blown over during the maintenance period will be reset by the Contractor at no additional expense to the Owner, the only exception being hurricane force winds.
3.11 COMPLETION, INSPECTION AND ACCEPTANCE: Completion of the work shall mean the full and exact compliance and conformity with the provisions expressed or implied in the Drawings and in the Specifications, including the complete removal of all trash, debris, soil or other waste created by the Landscape Contractor.
B. Inspection of work to determine completion of contract, exclusive of the possible replacement of plants, will be made by the Owner and/or Landscape Architect at the conclusion of all planting and at the request of the Landscape Contractor.
C. All plant material shall be alive and in good growing condition for each specified kind of plant at the time of acceptance.
D. After inspection, the Landscape Contractor will be notified by the Owner of the acceptance of all plant material and workmanship, exclusive of the possible replacement of plants subject to guarantee.
E. All trees & shrubs shall be straight and in correct position per the landscape plans, details and specifications. All nursery, shipping and identification tags & ribbons shall be removed from trees & shrubs immediately after planting.

lucido & associates logo and contact information: 701 E Ocean Blvd., Stuart, Florida 34994, (772) 220-2100, Fax (772) 223-0220



Project Team:
Owner/Developer: Matamny Hornes
Engineer: Kinrley-Horn
Surveyor: Caulfield & Wheeler, Inc
Landscape Architects/Land Planner: Lucido & Associates

Capstone Community
Port St. Lucie, Florida
Landscape Specifications

January 4, 2022
City of Port St. Lucie P# 20-141-A1
PSLUD No. 5367

Table with 3 columns: Date, By, Description. Row 1: 1.4.23, MRY, Initial Submittal

North arrow, Scale: 1" = n.t.s., and Registration mark with REG. # 1018 and Thomas P. Lucido.

Table with 2 columns: Role and Name. Designer: ---, Manager: ---, Project Number: ---, Municipal Number: ---, Computer File: Capstone - Landscape Modification.dwg

