

FLOOR PLAN

1/8" = 1'-0"

TABULATIONS	
WAREHOUSE	22,120 SQFT
OFFICE	3,200 SQFT
TOTAL	25,320 SQFT

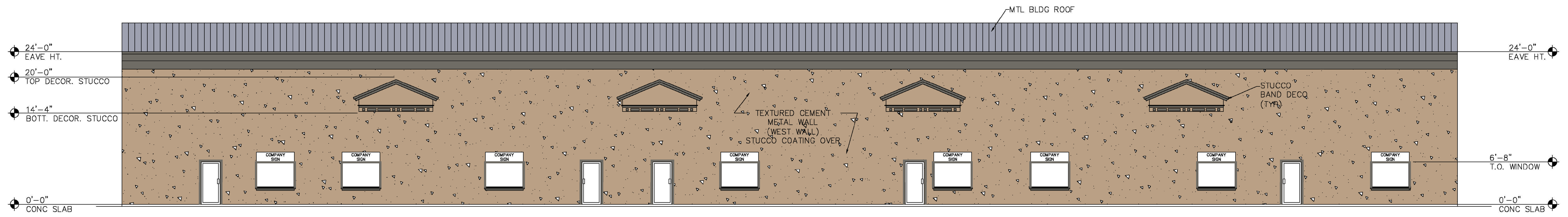
DOOR / WINDOW SCHEDULE

- 1 3/8" HTML
- 2 14"14" ROLL UP
- 4 3/8" STOREFRONT IMPACT
- 5 3/8" SC WD
- 6 3/8" SC WD W/CLOSER & HC HDWRE/LOCK
- 7 PR 3/8" SC WD SLIDERS
- A 72" X 48" STOREFRONT - IMPACT
- B 72" X 48" STOREFRONT TEMPERED

City of Port St. Lucie
Project No. P20-199

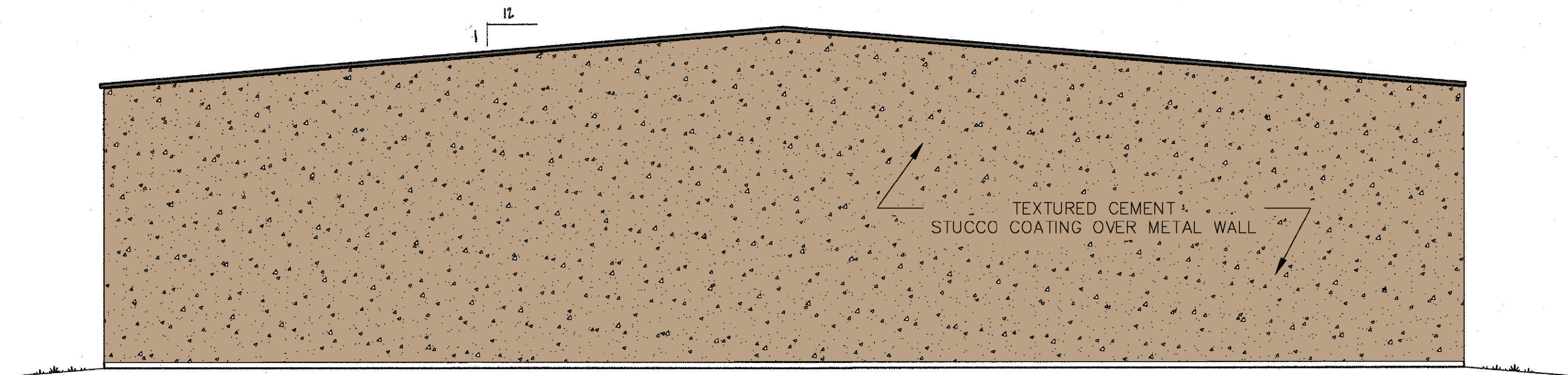
PAUL WELCH INC.
MECHANICAL ELECTRICAL CIVIL ENGINEERING
1984 S.W. BILTMORE ST. SUITE #114
PORT ST. LUCIE, FL 34984
PHONE (772) 785-9888 E-MAIL PWELCHINC@AOL.COM
PAUL WELCH, P.E. FLA REG NO. 29945

A GREAT HOME
751 NW ENTERPRISE DR #105 PORT ST.LUCIE, FL
DARRICK 772-209-2845



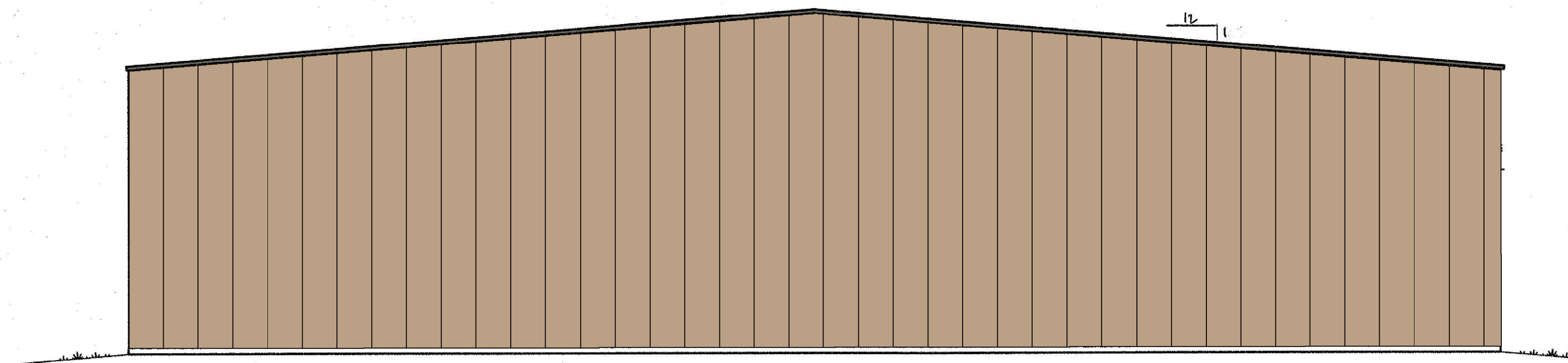
EAST ELEVATION

SCALE: 1/8" = 1'-0"



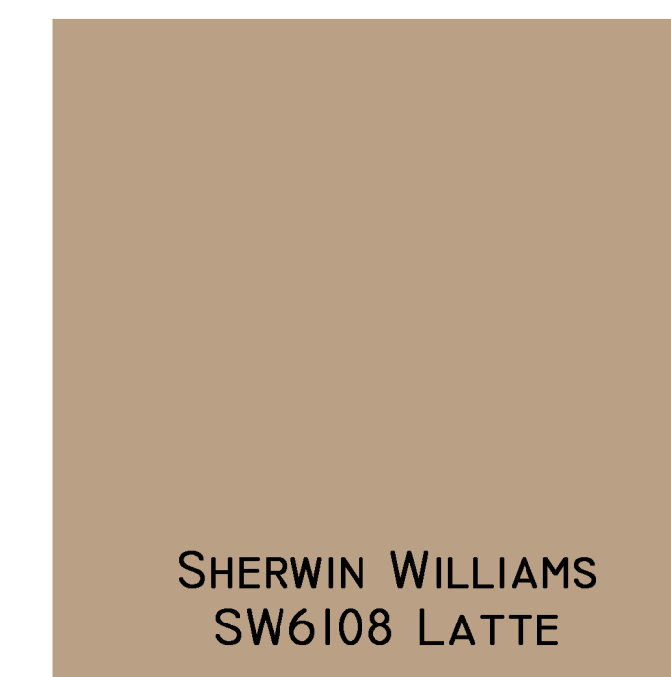
NORTH ELEVATION

SCALE: 1/8" = 1'-0"



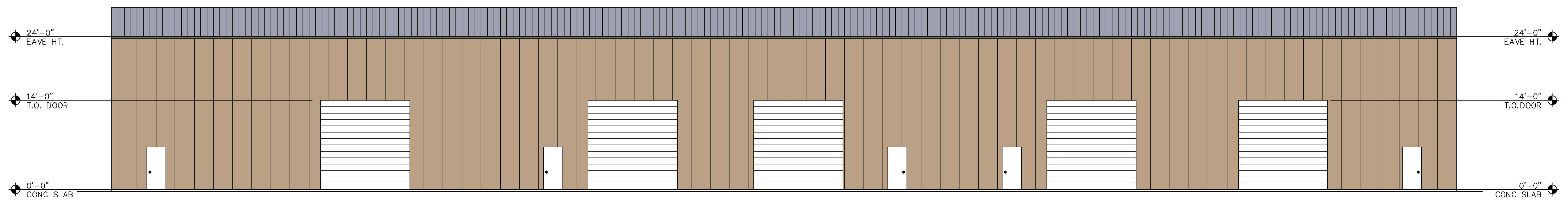
SOUTH ELEVATION

SCALE: 1/8" = 1'-0"



Galvalume
26 / 24 / 22 GA

NOTE: BUILDING COLORS SHALL BE SHERWIN WILLIAMS - LATTE FOR MAIN BUILDING AND THUNDER GREY FOR THE TRIM.



WEST ELEVATION

SCALE: 1/8" = 1'-0"

A GREAT HOME
751 NW ENTERPRISE DR #105 PORT ST. LUCIE, FL
DARRICK 772-209-2845

City of Port St. Lucie
Project No. P20-199

PAUL WELCH INC.
MECHANICAL ELECTRICAL CIVIL ENGINEERING
1984 S.W. BILTMORE ST. SUITE #114
PORT ST. LUCIE, FL 34984
PHONE (772) 785-9888 E-MAIL PWELCHINC@AOL.COM
PAUL WELCH, P.E. FLA REG NO. 29945