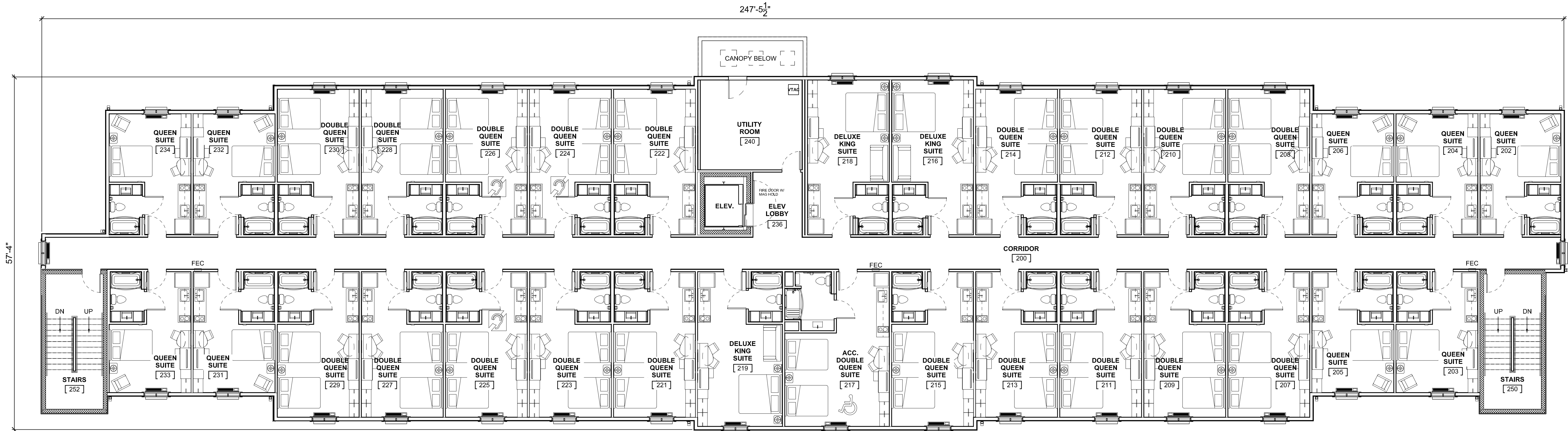






WOODSPRING
SUITES

WOODSPRING
SUITES

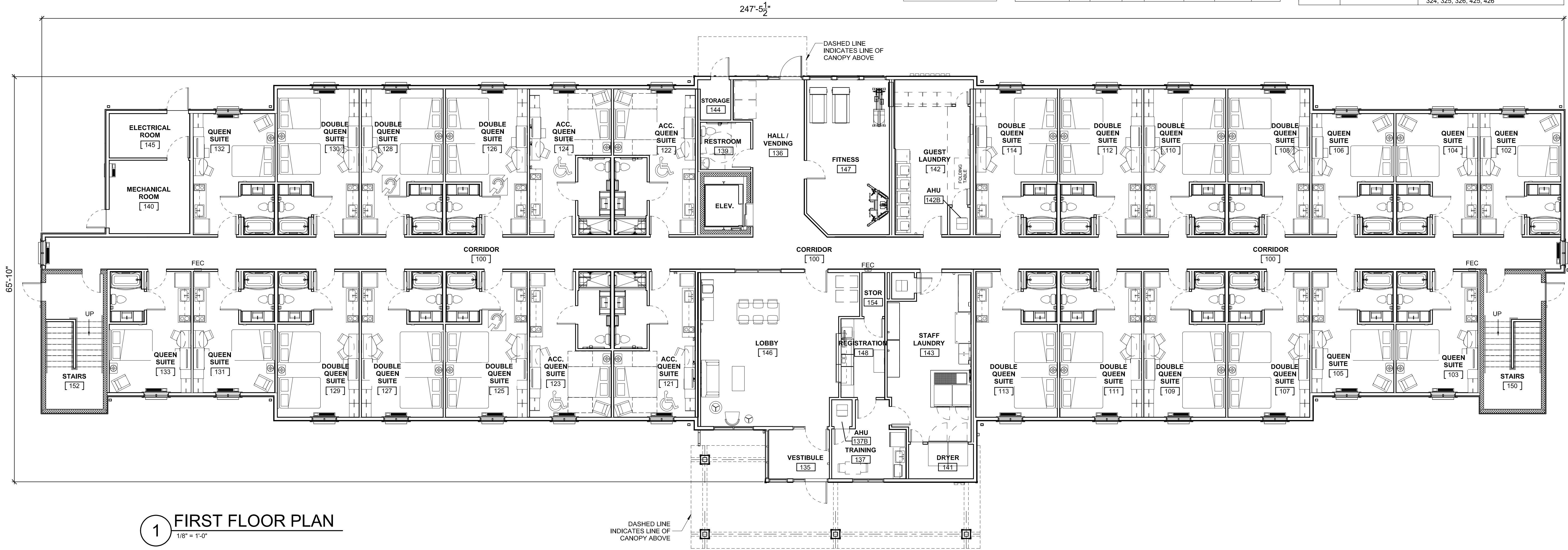


2 SECOND FLOOR PLAN
 1/8" = 1'-0"

ACTUAL
 4 STORIES
 13,033 SQ FT (1st)
 12,740 SQ FT (2nd, 3rd, 4th)
 578 SQ FT (Front Canopy)
 113 SQ FT (Rear Canopy)
 51,944 SQ FT (TOTAL)

GUESTROOM DATA							
	QS	ACC. QS	DBLQS	ACC. DBLQS	DELKS	ACC. DELQS	TOTAL
FIRST LEVEL	8	4	14	-	-	-	26
SECOND LEVEL	9	-	19	1	3	-	32
THIRD LEVEL	9	-	19	-	3	-	32
FOURTH LEVEL	9	-	19	-	3	1	32
TOTAL	35	4	72	2	9	1	122
PERCENTAGES	28%	4%	58%	2%	7%	1%	100%

ACCESSIBLE UNITS		
NO. OF UNITS	DESCRIPTION	ROOM NO.
3	BATH W/TUB	217, 317, 417
4	ROLL-IN SHOWER	121, 122, 123, 124
11	HEARING IMPAIRED	125, 126, 128, 224, 225, 226, 324, 325, 326, 425, 426



1 FIRST FLOOR PLAN
 1/8" = 1'-0"

DATE	REVISION
MM/DD/YYYY	DESCRIPTION OF REVISION

This drawing and all reproductions are copyrighted and the property of Hospitality Architects, LLC, and may not be published, reproduced or used in any way without their permission.
 Copyright © 2020 Hospitality Architects, LLC.

10-16-20

SCALE AS NOTED

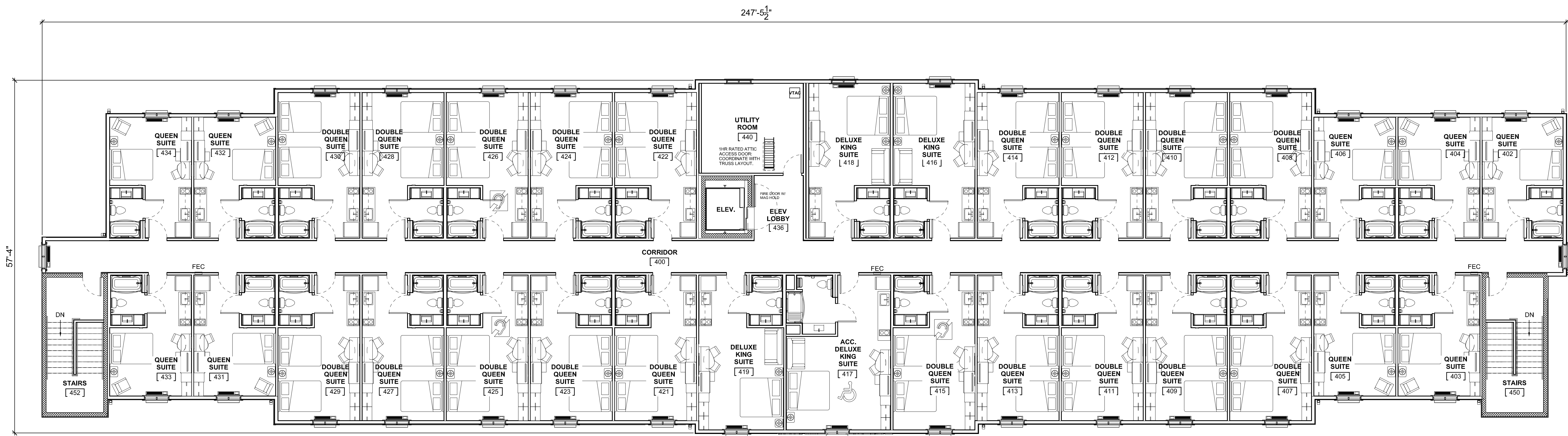
DRAWN BY TM CHECKED BY

CAD FILE

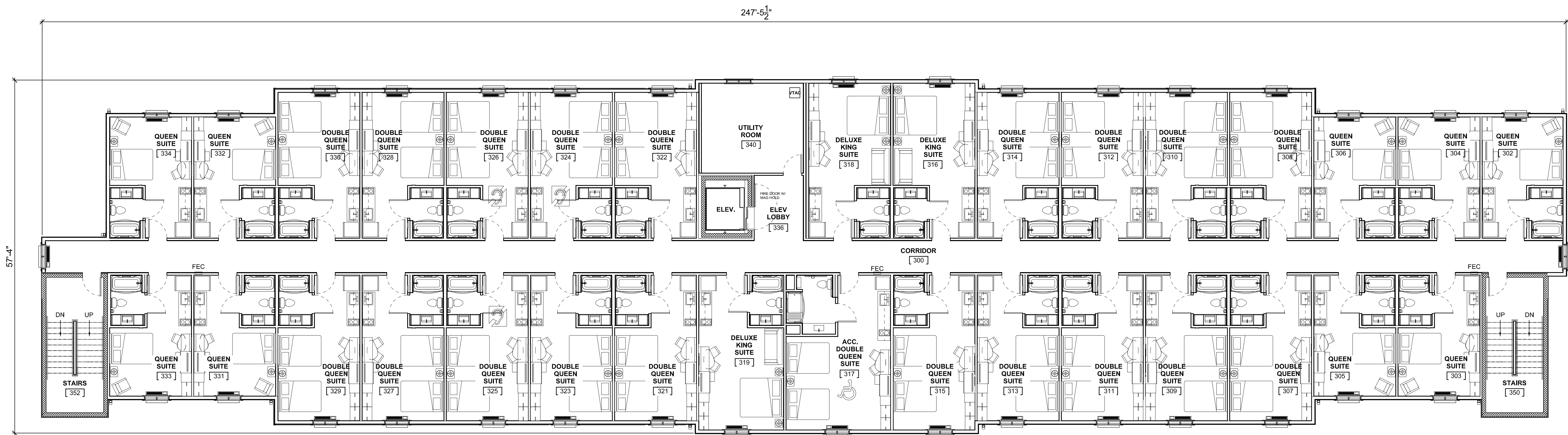
DRAWING TITLE

FIRST & SECOND FLOOR PLANS

DRAWING NO. A1.1



2 FOURTH FLOOR PLAN
1/8" = 1'-0"



1 THIRD FLOOR PLAN
1/8" = 1'-0"

WOODSPRING SUITES
PORT ST. LUCIE, FLORIDA

DATE	REVISION
MM/DD/YYYY	DESCRIPTION OF REVISION

This drawing and all reproductions are copyrighted and the property of Hospitality Architects, LLC, and may not be published, reproduced or used in any way without their permission.
Copyright © 2020 Hospitality Architects, LLC.

DATE	10-16-20
SCALE	AS NOTED
DRAWN BY	TM
CHECKED BY	
CAD FILE	

SECOND & THIRD FLOOR PLANS

DRAWING NO. **A1.2**

COLOR SCHEDULE:

Ⓐ	COLOR: SW7012 "CREAMY" PPG
Ⓑ	COLOR: SW6120 "BELIEVABLE BUFF" PPG
Ⓒ	COLOR: SW7594 "CARRIAGE DOOR" PPG
Ⓓ	COLOR: SW7026 "GRIFFIN" PPG

COLOR SCHEDULE:

Ⓐ	COLOR: SW9166 "DRIFT OF MIST" PPG
Ⓑ	COLOR: SW7658 "GRAY CLOUDS" PPG
Ⓒ	COLOR: SW9152 "LET IT RAIN" PPG
Ⓓ	COLOR: SW7076 "CYBERSPACE" PPG

COLOR SCHEDULE:

Ⓐ	COLOR: SW9109 "NATURAL LINEN" PPG
Ⓑ	COLOR: SW6201 "THUNDEROUS" PPG
Ⓒ	COLOR: SW7644 "GATEWAY GREY" PPG
Ⓓ	COLOR: SW7048 "URBANE BRONZE" PPG

COLOR SCHEDULE:

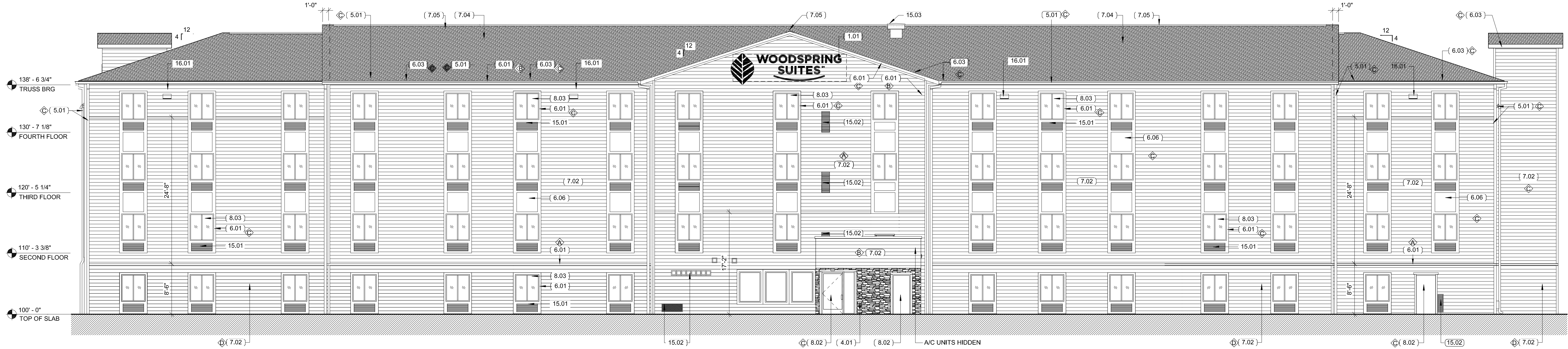
Ⓐ	COLOR: SW7004 "SNOWBOUND" PPG
Ⓑ	COLOR: SW7569 "STUCCO" PPG
Ⓒ	COLOR: SW9168 "ELEPHANT EAR" PPG
Ⓓ	COLOR: SW7675 "SEALSKIN" PPG

- NOTES:**
- GC TO COORDINATE ELECTRICAL ROUGH IN WITH CONTRACTOR AND SIGN VENDOR PRIOR TO DRYWALL.
 - REFER TO SIGN PACKAGE FOR ALL BLOCKING AND MOUNTING DETAILS.
 - ALIGN EXHAUST VENTS BOTH VERTICAL AND HORIZONTAL.
 - EXTERIOR SIGNAGE: OWNER TO COORDINATE WITH SIGN VENDOR AND LOCAL JURISDICTION.
 - 6" GUTTERS, DOWNSPOUTS, PARAPET CAP, AND FLASHING TO BE SELECTED FROM MANUFACTURER'S STANDARD COLORS TO MATCH AS SCHEDULED, SUBMIT FOR APPROVAL.
 - ALL COLOR TRANSITIONS OCCUR AT INSIDE CORNERS NOT OUTSIDE CORNERS.

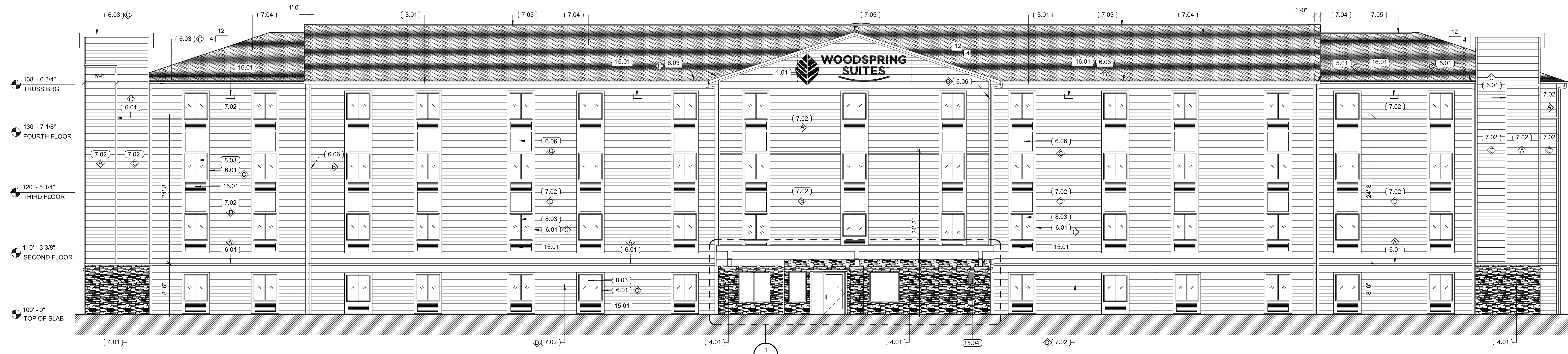
GENERAL NOTE:
 PROVIDE WEATHER BARRIER OVER ALL EXTERIOR SHEATHING PRIOR TO THE INSTALLATION OF ANY EXTERIOR FINISH MATERIAL. INSTALL PER MANUFACTURER'S SPECIFICATIONS AND PROVIDE ALL MANUFACTURER'S ACCESSORIES TO FULLY FLASH AND COUNTER-FLASH AT ALL WINDOWS, DOORS, AND EXTERIOR PENETRATIONS. PROVIDE A WEATHER TIGHT BARRIER AT ALL SURFACES. COORDINATE FLASHING WITH WINDOW, DOOR, VENT, ETC. MANUFACTURER'S FOR A WEATHER TIGHT SEAL AT ALL OPENINGS.

KEYNOTE LEGEND

1.01	SIGNAGE BY OWNER; UNDER SEPARATE PERMIT. COORDINATE BLOCKING WITH MANUFACTURER
4.01	ADHERED MANUFACTURED STONE VENEER
5.01	ALUMINUM GUTTERS AND DOWNSPOUTS
6.01	CEMENT BOARD TRIM: 5/4"x4"
6.03	CEMENT BOARD TRIM FASCIA
6.06	CEMENT BOARD PANEL
7.02	7" EXPOSURE CEMENT BOARD LAP SIDING; SEE COLOR SCHEDULE
7.04	COMPOSITION SHINGLES
7.05	RIDGE VENT; REF SHEET A1.3 FOR DETAILS
8.02	HOLLOW METAL DOOR
8.03	SLIDING WINDOW, TYP.
15.01	THRU-WALL HVAC UNIT
15.02	MECHANICAL LOUVERS; REF MECH. DWGS. PAINT TO MATCH ADJACENT
15.03	ELEVATOR ROOF VENT
15.04	MECHANICAL LOUVERS; REF MECH. DWGS. MILL ALUMINUM FINISH
16.01	LIGHT WALL PACK, MOUNT 35'-0" TO CENTER OF FIXTURE, REF ELEC. DWGS.



2 REAR ELEVATION
 1/8" = 1'-0"



1 FRONT ELEVATION
 1/8" = 1'-0"

WOODSPRING SUITES
 PORT ST. LUCIE, FLORIDA

DATE	REVISION
MM/DD/YYYY	DESCRIPTION OF REVISION

This drawing and all reproductions are copyrighted and the property of Hospitality Architects, LLC and may not be published, reproduced or used in any way without their permission.
 Copyright © 2020 Hospitality Architects, LLC.

SCALE: 10-16-20
 AS NOTED

DRAWN BY: TM
 CHECKED BY: []

DRAWING TITLE:
EXTERIOR ELEVATIONS

DRAWING NO.:
A2.1

COLOR SCHEDULE:

Ⓐ	COLOR: SW7012 "CREAMY" PPG
Ⓑ	COLOR: SW6120 "BELIEVABLE BUFF" PPG
Ⓒ	COLOR: SW7594 "CARRIAGE DOOR" PPG
Ⓓ	COLOR: SW7026 "GRIFFIN" PPG

COLOR SCHEDULE:

Ⓐ	COLOR: SW9166 "DRIFT OF MIST" PPG
Ⓑ	COLOR: SW7658 "GRAY CLOUDS" PPG
Ⓒ	COLOR: SW9152 "LET IT RAIN" PPG
Ⓓ	COLOR: SW7076 "CYBERSPACE" PPG

COLOR SCHEDULE:

Ⓐ	COLOR: SW9109 "NATURAL LINEN" PPG
Ⓑ	COLOR: SW6201 "THUNDEROUS" PPG
Ⓒ	COLOR: SW9144 "GATEWAY GREY" PPG
Ⓓ	COLOR: SW7048 "URBANE BRONZE" PPG

COLOR SCHEDULE:

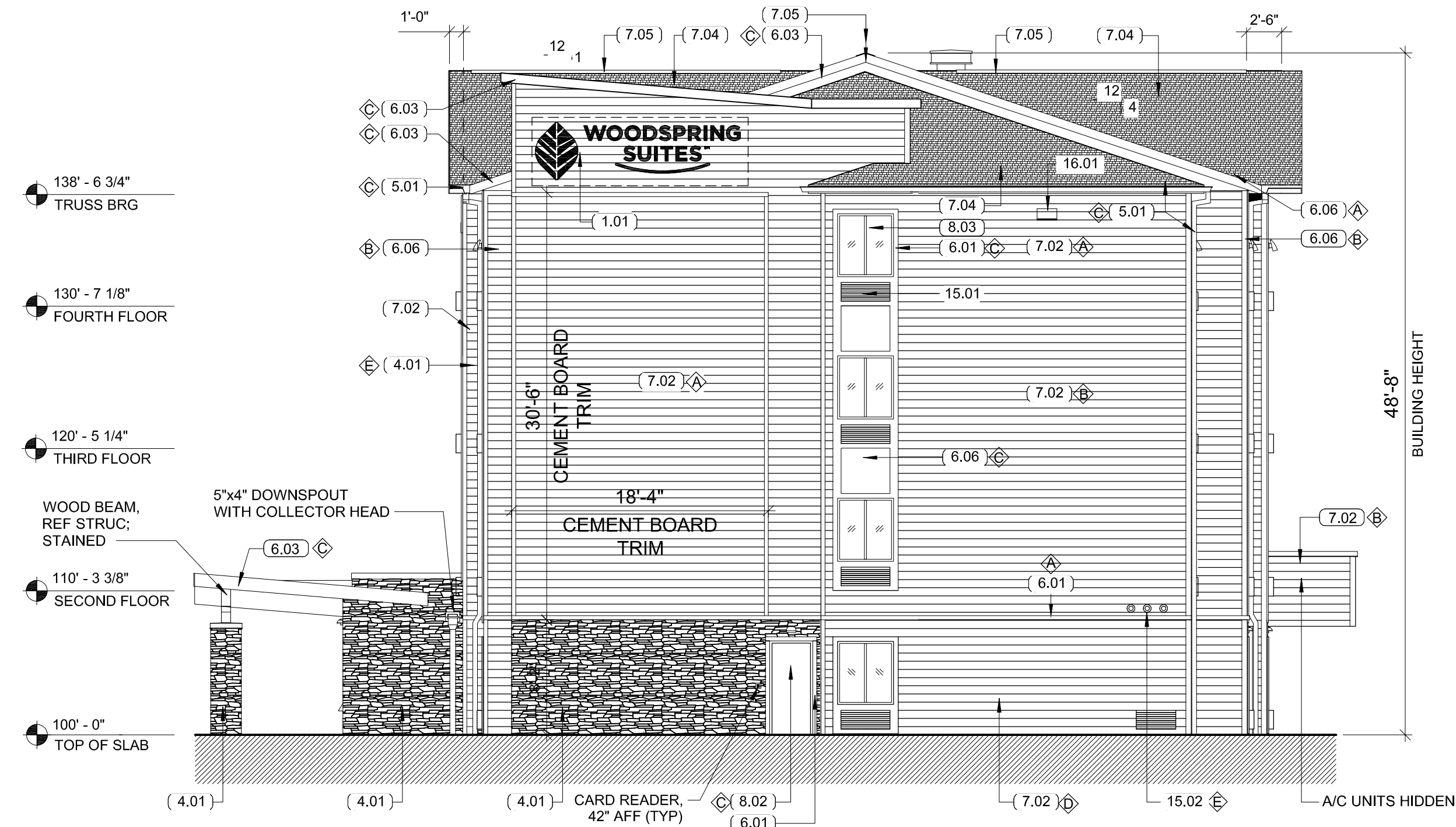
Ⓐ	COLOR: SW7004 "SNOWBOUND" PPG
Ⓑ	COLOR: SW7569 "STUCCO" PPG
Ⓒ	COLOR: SW9168 "ELEPHANT EAR" PPG
Ⓓ	COLOR: SW7675 "SEALSKIN" PPG

- NOTES:**
- GC TO COORDINATE ELECTRICAL ROUGH IN WITH CONTRACTOR AND SIGN VENDOR PRIOR TO DRYWALL.
 - REFER TO SIGN PACKAGE FOR ALL BLOCKING AND MOUNTING DETAILS.
 - ALIGN EXHAUST VENTS BOTH VERTICAL AND HORIZONTAL.
 - EXTERIOR SIGNAGE: OWNER TO COORDINATE WITH SIGN VENDOR AND LOCAL JURISDICTION.
 - 6" GUTTERS, DOWNSPOUTS, PARAPET CAP, AND FLASHING TO BE SELECTED FROM MANUFACTURER'S STANDARD COLORS TO MATCH AS SCHEDULED, SUBMIT FOR APPROVAL.
 - ALL COLOR TRANSITIONS OCCUR AT INSIDE CORNERS NOT OUTSIDE CORNERS.

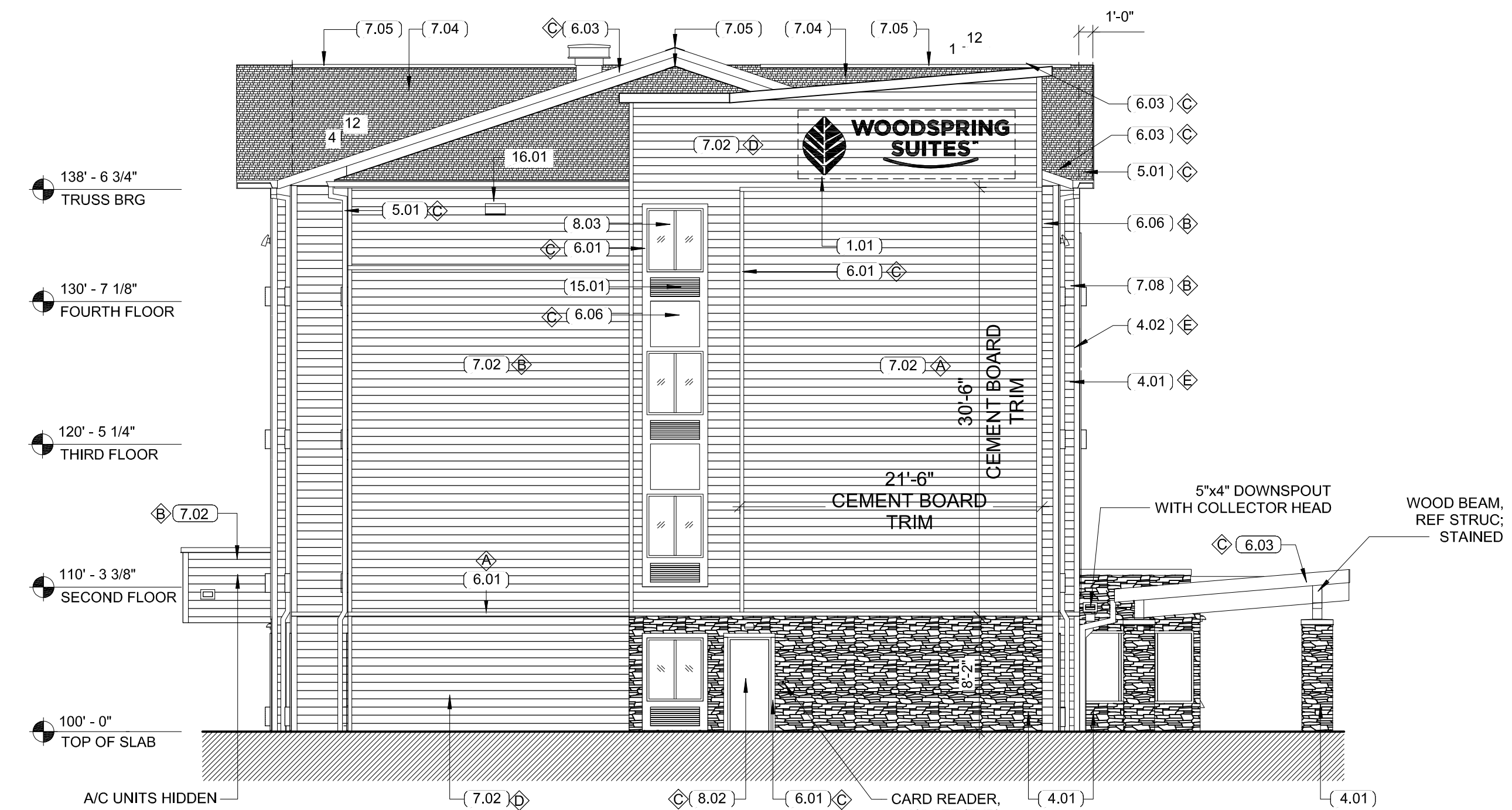
GENERAL NOTE:
 PROVIDE WEATHER BARRIER OVER ALL EXTERIOR SHEATHING PRIOR TO THE INSTALLATION OF ANY EXTERIOR FINISH MATERIAL. INSTALL PER MANUFACTURER'S SPECIFICATIONS AND PROVIDE ALL MANUFACTURER'S ACCESSORIES TO FULLY FLASH AND COUNTER-FLASH AT ALL WINDOWS, DOORS, AND EXTERIOR PENETRATIONS. PROVIDE A WEATHER TIGHT BARRIER AT ALL SURFACES. COORDINATE FLASHING WITH WINDOW, DOOR, VENT, ETC. MANUFACTURER'S FOR A WEATHER TIGHT SEAL AT ALL OPENINGS.

KEYNOTE LEGEND

1.01	SIGNAGE BY OWNER; UNDER SEPARATE PERMIT. COORDINATE BLOCKING WITH MANUFACTURER
4.01	ADHERED MANUFACTURED STONE VENEER
5.01	ALUMINUM GUTTERS AND DOWNSPOUTS
6.01	CEMENT BOARD TRIM: 5/4"x4"
6.03	CEMENT BOARD TRIM FASCIA
6.06	CEMENT BOARD PANEL
7.02	7" EXPOSURE CEMENT BOARD LAP SIDING; SEE COLOR SCHEDULE
7.04	COMPOSITION SHINGLES
7.05	RIDGE VENT; REF SHEET A1.3 FOR DETAILS
8.02	HOLLOW METAL DOOR
8.03	SLIDING WINDOW, TYP.
15.01	THRU-WALL HVAC UNIT
15.02	MECHANICAL LOUVERS; REF MECH. DWGS. PAINT TO MATCH ADJACENT
15.04	MECHANICAL LOUVERS; REF MECH. DWGS. MILL ALUMINUM FINISH
16.01	LIGHT WALL PACK, MOUNT 35'-0" TO CENTER OF FIXTURE, REF ELEC. DWGS.



2 RIGHT ELEVATION
 1/8" = 1'-0"



1 LEFT ELEVATION
 1/8" = 1'-0"

WOODSPRING SUITES
 PORT ST. LUCIE, FLORIDA

DATE	REVISION
MM/DD/YYYY	DESCRIPTION OF REVISION

This drawing and all reproductions are copyrighted and the property of Hospitality Architects, LLC and may not be published, reproduced or used in any way without their permission.
 Copyright © 2020 Hospitality Architects, LLC.

SCALE: 10-16-20

SCALE: AS NOTED

DRAWN BY: TM CHECKED BY:

CAD FILE:

DRAWING TITLE:

EXTERIOR ELEVATIONS

DRAWING NO.:

A2.2