

LINE TYPE / HATCH LEGEND	
	PROPERTY BOUNDARY
	EXISTING 16" WATER MAIN
	LOT LINES
	TREE PRESERVATION AREA. SEE LANDSCAPE DRAWINGS FOR DETAILS.
	STRIPING
	EXISTING CHAIN LINK FENCE
	PROPOSED CHAIN LINK FENCE
	STORMWATER PIPE
	WATER LINE
	SANITATION LINE
	TO BE REMOVED
	LANDSCAPE BARRIER

SYMBOL LEGEND	
	25'-0" LIGHT POLE (450 WATT)
	SMALL ACCENT UP LIGHTS (RGB COLOR ADJUSTABLE)
	LARGE ACCENT UP LIGHTS (RGB COLOR ADJUSTABLE)
	BOLLARD PATH LIGHTS TYP.
	EXISTING FIRE HYDRANT
	PROPOSED FIRE HYDRANT
	EXISTING 12" WATER MAIN STUB
	STORMWATER CATCH BASIN

SITE DATA			
	ACRES	SQUARE FOOTAGE	PERCENTAGE
IMPERVIOUS AREA	17.78 AC	774,717 SF	45.78%
• PUBLIC WORKS BUILDING (PH 1)	0.36 AC	15,746 SF	0.93%
• FUTURE WAREHOUSE (PH 2)	0.29 AC	11,200 SF	0.66%
• PAVEMENT & SIDEWALK COVERAGE	7.62 AC	332,000 SF	19.62%
• STORMWATER TREATMENT AREA	9.54 AC	415,771 SF	24.57%
PERVIOUS AREA	21.05 AC	917,154 SF	54.21%
• LANDSCAPE	21.05 AC	917,154 SF	54.21%
GROSS SITE AREA	38.84 AC	1,691,871 SF	100%

SETBACKS	
FRONT:	EACH LOT SHALL HAVE A FRONT YARD WITH A BUILDING SETBACK LINE OF TWENTY-FIVE (25) FEET.
SIDE:	EACH LOT SHALL HAVE TWO (2) SIDE YARDS, EACH OF WHICH SHALL HAVE A BUILDING SETBACK LINE OF TEN (10) FEET. A BUILDING SETBACK LINE OF TWENTY-FIVE (25) FEET SHALL BE REQUIRED WHEN THE YARD ADJOINS A RESIDENTIAL FUTURE LAND USE CATEGORY OR A PUBLIC RIGHT-OF-WAY.
REAR:	EACH LOT SHALL HAVE A REAR YARD WITH BUILDING SETBACK LINE OF TWENTY-FIVE (25) FEET SHALL BE REQUIRED WHEN THE YARD ADJOINS A RESIDENTIAL FUTURE LAND USE CATEGORY OR A PUBLIC RIGHT-OF-WAY.
NOTE:	LANDSCAPING REQUIREMENTS, LANDSCAPING AND BUFFERING REQUIREMENTS ARE SUBJECT TO CHAPTER 154. ALL MECHANICAL EQUIPMENT SHALL BE SCREENED FROM PROPERTY ZONED RESIDENTIAL. THIS SCREENING SHALL BE DESIGNED AS BOTH A VISUAL AND A NOISE BARRIER.

PARKING ANALYSIS	
BUILDING USE:	OFFICES
ZONING DISTRICT:	INSTITUTIONAL
PARKING:	REQUIRED
OFFICE:	1 PARKING SPACE / 250 SF 44,928 SF / 250 SF = 180 PARKING SPACES THE MINIMUM REQUIRED NUMBER OF ACCESSIBLE PARKING SPACES IS 3 FOR 51-75 TOTAL PARKING SPACES.
WAREHOUSE:	1 PARKING SPACE / 500 SF 11,200 SF / 500 SF = 22 PARKING SPACES THE MINIMUM REQUIRED NUMBER OF ACCESSIBLE PARKING SPACES IS 1 FOR 1-25 TOTAL PARKING SPACES.

GENERAL NOTES:	
ALL STRIPING TO BE THERMOPLASTIC TYPE.	

CODED NOTES	
SYM.	CODED NOTES:
1	STORMWATER TREATMENT AREA WITH GRADING
2	OPEN SPACE/HURRICANE DEBRIS
3	SLW DRAINAGE CONVEYANCE
4	EMPLOYEE GATE ACCESS KIOSK WITH EMERGENCY ACCESS CONTROL KEY SWITCH FOR FIRE DEPARTMENT ENTRY.
5	FUTURE WAREHOUSE BUILDING (11,200 SF) (PHASE II) (25 FFE)
6	TWO (2) 6-CUBIC YARD DUMPSTERS (6'X5'X6') SEE SHEET A-104 FOR DETAILS
7	FUTURE TURNPIKE ROUNDABOUT & HIGHWAY OVERPASS (12'-6" MIN VERTICAL CLEARANCE)
8	EQUIPMENT & MATERIAL STORAGE WITH STAB AND HEAVY EQUIPMENT & INDUSTRIAL VEHICLE PARKING
9	TREE PRESERVATION AREA. SEE LANDSCAPE DRAWINGS FOR DETAILS.
10	LANDSCAPE BARRIER. SEE LANDSCAPE DRAWINGS FOR DETAILS.
11	PROPOSED CHAIN LINK FENCING
12	CONCRETE WALKWAY (10'-0" WIDTH)
13	FLAG POLE
14	EXISTING TURNPIKE CANAL
15	BYPASS ROAD UNDER PROPOSED HIGHWAY (17' CLEARANCE)
16	EXISTING SIDEWALK
17	FREESTANDING CITY OF PORT ST. LUCIE PUBLIC WORKS SIGN (SW: 33 SF) (E: 60 SF)
18	RIGHT TURN LANE FOR MAIN ENTRANCE: (LENGTH: 320'-1")
19	DO NOT ENTER SIGN
20	PROPERTY BOUNDARY
21	ONE WAY SIGN
22	DECORATIVE FENCE AND PEDESTRIAN GATE
23	STOP SIGN
24	WATER HOLDING TANK
25	156'-27" X 96'-27" NEW THREE (3) STORY PUBLIC WORKS ADMINISTRATION BUILDING (44,928 SF) (25 FFE)
26	25'-0" LIGHT POLE (450 WATT)
27	LARGE INGROUND FLUSH MOUNTED ACCENT UP LIGHTS (RGB COLOR ADJUSTABLE)
28	SMALL INGROUND FLUSH MOUNTED ACCENT UP LIGHTS (RGB COLOR ADJUSTABLE)
29	PROPOSED LIFT STATION W/ DEDICATED FPL TRANSFORMER
30	SOLARSCAPES MODERN CANOPY PARKING WITH INTEGRATED LED LIGHTING
31	GREASE TRAP/SOLID INTERCEPTOR
32	ABOVE GROUND FPL TRANSFORMER
33	ROUNDABOUT AHEAD SIGN
34	STOP BAR PAINTED ON ROAD
35	PROPOSED LEFT TURN LANE
36	PEDESTRIAN CROSSWALK SIGN
37	EXISTING WATER MAIN
38	EXISTING FIRE HYDRANT
39	SIDEWALK DETECTABLE ADA MAT
40	EXISTING CHAIN LINK FENCING
41	PROPOSED FIRE HYDRANT
42	LOT LINES (SEE CIVIL)
43	EXISTING GATE
44	EXISTING TRAIL
45	EXISTING CANAL SECTION TO BE REMOVED
46	12" HEADER CURB WITH CASE II RED REFLECTOR SIGNS. CONCRETE-REINFORCED TRANSITION FOR HEAVY RATED VEHICLES
47	HURRICANE DEBRIS ACCESS RIGHT TURN LANE (LENGTH: 320'-1")
48	TRUCK TURNAROUND
49	NEW 6'-0" BLACK PICKET DOUBLE SWING GATE WITH DECORATIVE 24" X 24" CMU ARCHITECTURAL POST
50	STOP SIGN & RIGHT TURN ONLY COMBO
51	CONNECTION BETWEEN TWO EXISTING MEDIANS
52	EXISTING FEATURES TO BE REMOVED
53	BOLLARD PATH LIGHTS TYP.
54	FROG FURNISHINGS HERITAGE BENCH (6FT)
55	EXISTING PULL BOX

CITY OF PORT ST. LUCIE
PUBLIC WORKS BUILDING
1501 SW CAMEO BLVD.
PORT ST. LUCIE

BEA architects Inc.
LICENSE No. AA26001612
11575 NW 7th Ave
Miami, FL 33168
PHONE: (305) 461-2053
FAX: (305) 634-0599
E-mail: info@bea.com
http://www.bea.com



Robert M. Draper R.A.
FL Lic. #: A R66251

SHEET TITLE: SITE PLAN		
REVISIONS:		
#	Description:	Date:
PSL PLANNING & ZONING PROJECT NUMBER: P25-201		
PSLUSD PROJECT NUMBER: 5003-58		
SUBMITTAL: SITE PLAN REVIEW		
SCALE: AS SHOWN		
DATE: 1/12/2026		
BEA PROJECT NUMBER: 24-9081		
DRAWN BY:	CHECKED BY:	RD
SHEET NO.: A-101		

2 A-102 GENERATORS & CHILLERS

ENLARGED SITE PLAN

TRELLIS TYP. SECTION



**FROG FURNISHINGS RESINWOOD ROUND
32-GALLON WASTE RECEPTACLE**

- | GENERAL NOTES: | |
|----------------|---|
| 1. | ALL STRIPING TO BE THERMOPLASTIC TYPE. |
| 2. | G.C. TO PROVIDE SIGNED AND SEALED SHOP DRAWINGS FOR DROP OFF TRELLIS. |

ARCHITECTURAL ELEMENTS	
SYM.	ELEMENT:
(A)	BRICK PAVERS (10.01 #16)
(B)	ALUMINUM TRELLIS (10.01 #4)

CODED NOTES	
SYM.	CODED NOTES:
①	PUBLIC PARKING
②	DROP-OFF LANE
③	10' CONCRETE WALKWAY TYP.
④	EMPLOYEE PARKING
⑤	156'-2" X 169'-2" NEW THREE (3) STORY PUBLIC WORKS ADMINISTRATION BUILDING (44,928 SF) (25 FFE)
⑥	ALUMINUM TRELLACE
⑦	AMERICAN FLAG
⑧	CITY OF PORT ST. LUCIE FLAG
⑨	STATE OF FLORIDA FLAG
⑩	CURVED FREESTANDING CITY OF PORT ST. LUCIE PUBLIC WORKS SIGN (61 SF)
⑪	D CURB
⑫	6" FLAT CURB
⑬	HARDSCAPE (STAMPED CONCRETE)
⑭	SECOND STORY PLANTERS
⑮	CROSSWALK
⑯	FROG FURNISHINGS RESINWOOD ROUND 32-GALLON WASTE RECEPTACLE WITH ASH TRAY (07106-102)
⑰	FPL TRANSFORMER
⑱	LANDSCAPE
⑲	DECORATIVE FENCE AND GATE
⑳	STOP SIGN AND BAR PAINTED ON ROAD
㉑	SIDEWALK DETECTABLE ADA MAT
㉒	PROPOSED CHILLER LOCATION (169.2 IN X 88.4 IN X 92.5 IN)
㉓	PROPOSED GENERATOR LOCATION (391" X 208" X 187.13")
㉔	PROPOSED CHAIN LINK FENCING
㉕	ONE WAY SIGN
㉖	FUTURE HIGHWAY OVERPASS (14'-6" MIN VERTICAL CLEARANCE)
㉗	WATER LINE
㉘	MADRAS CRANE BIKE RACK
㉙	STRIPING
㉚	FROG FURNISHINGS HERITAGE BENCH (6FT)
㉛	6'-0" CMIC WALL (STUCCO FINISH)
㉜	48" SINGLE MANUAL SWING GATE
㉝	24'-0" WIDE MANUAL SLIDE GATE WITH KNOX LOCK
㉞	3,000 GALLON WATER TANK
㉟	DOMESTIC WATER PUMP HOUSE

ENLARGED ALUMINUM TRELLIS PLAN

BEA architects Inc.
LICENSE No. AA26001612
11575 NW 7th Ave
Miami, FL 33168
PHONE: (305) 461-2053
FAX: (305) 634-0599
E-mail: info@beai.com
<http://www.beai.com>

Robert M. Draper R.A
FL 11C # A B96257

CITY OF PORT ST. LUCIE
PUBLIC WORKS BUILDING

1501 SW CAMEO BLVD,
PORT ST. LUCIE

SHEET TITLE :
SITE DETAILS

#	Description:	Date:
---	--------------	-------

PSL PLANNING & ZONING PROJECT NUMBER:
P25-201PSLUSD PROJECT NUMBER
5003-58SUBMITTAL:
SITE PLAN REVIEW

SCALE :
AS SHOWN

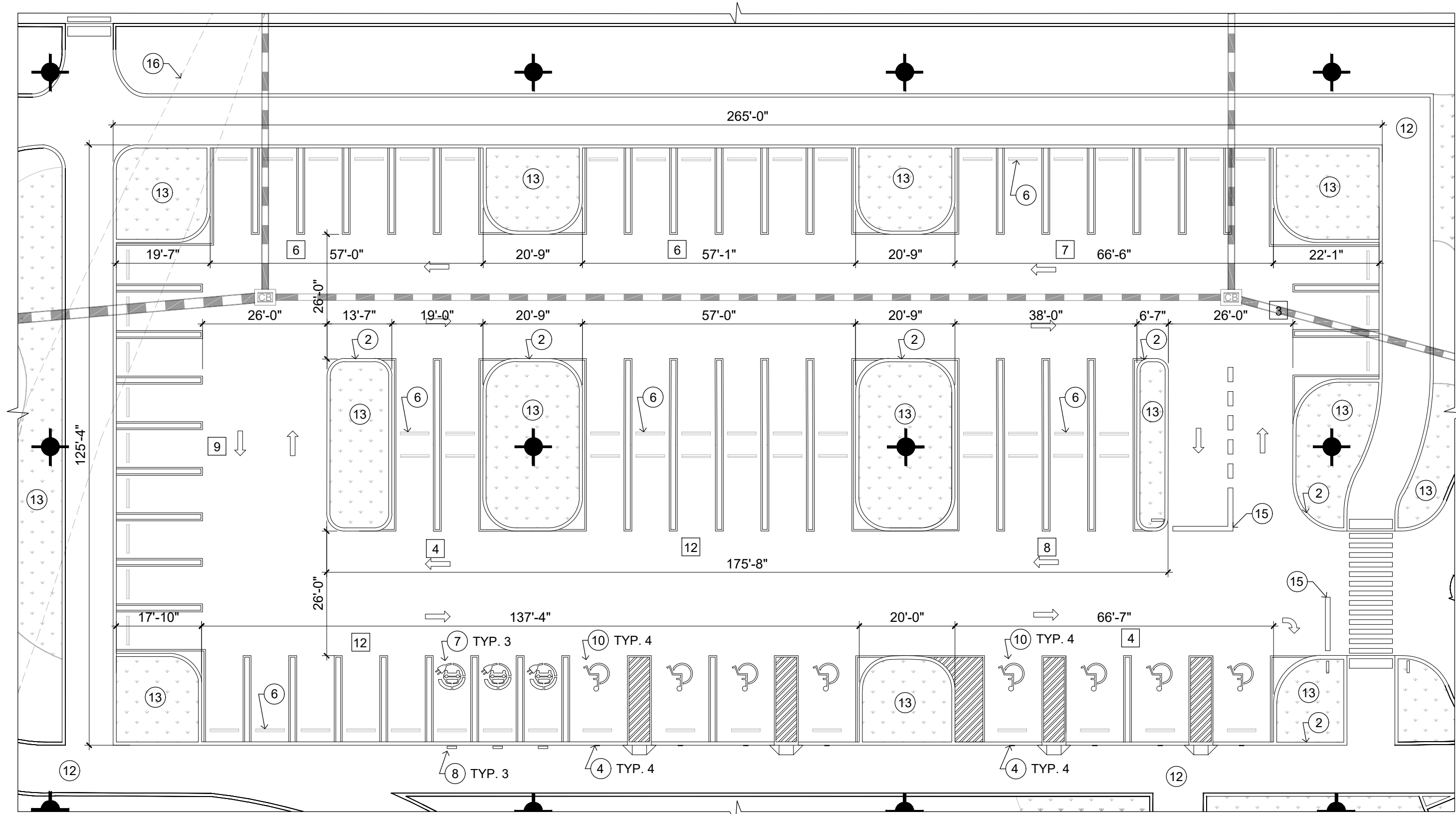
DATE :
1/12/2026

BEA PROJECT NUMBER :
24-9081

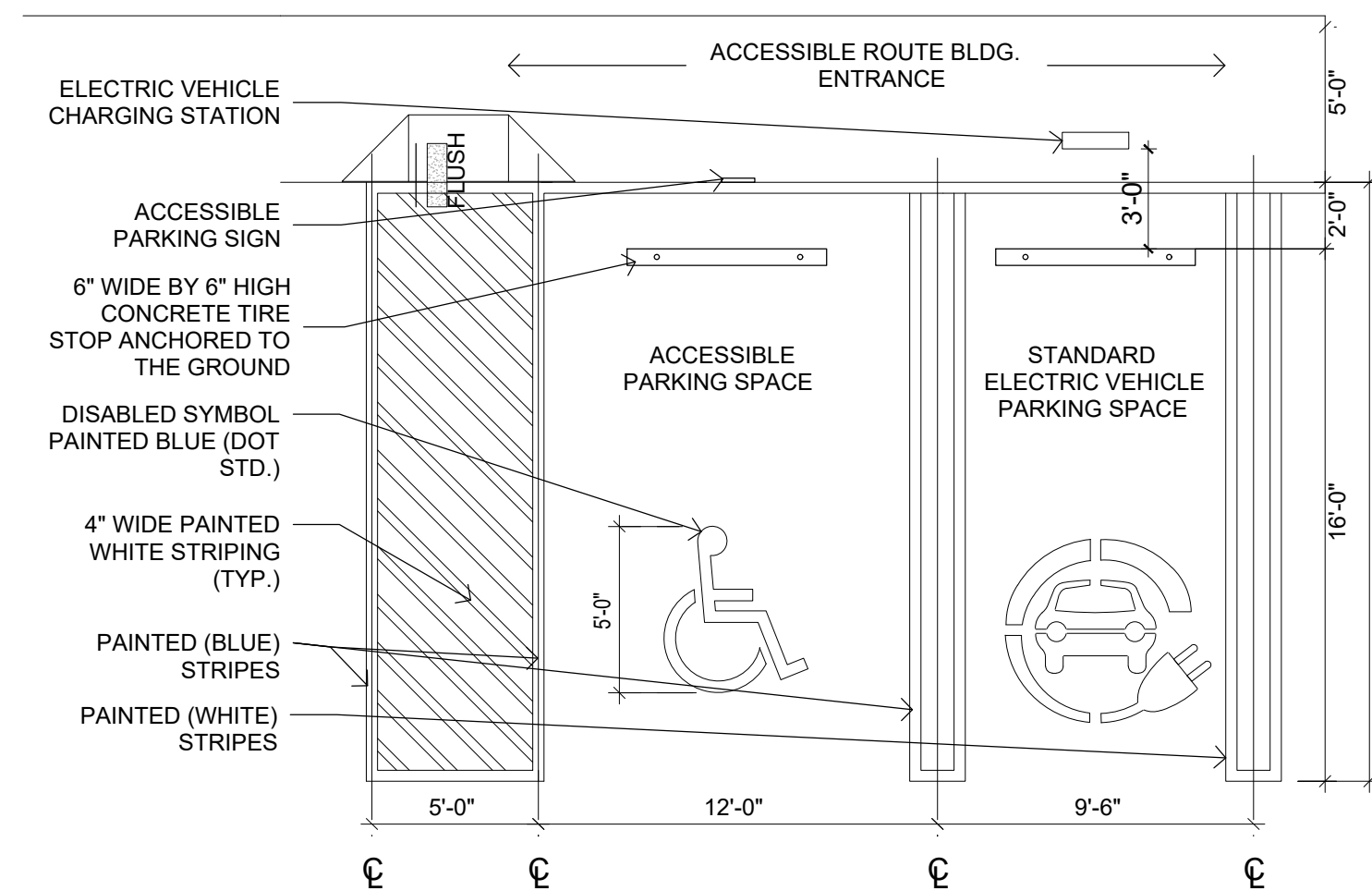
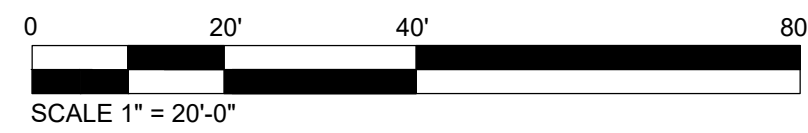
DRAWN BY :

SHEET NO. :

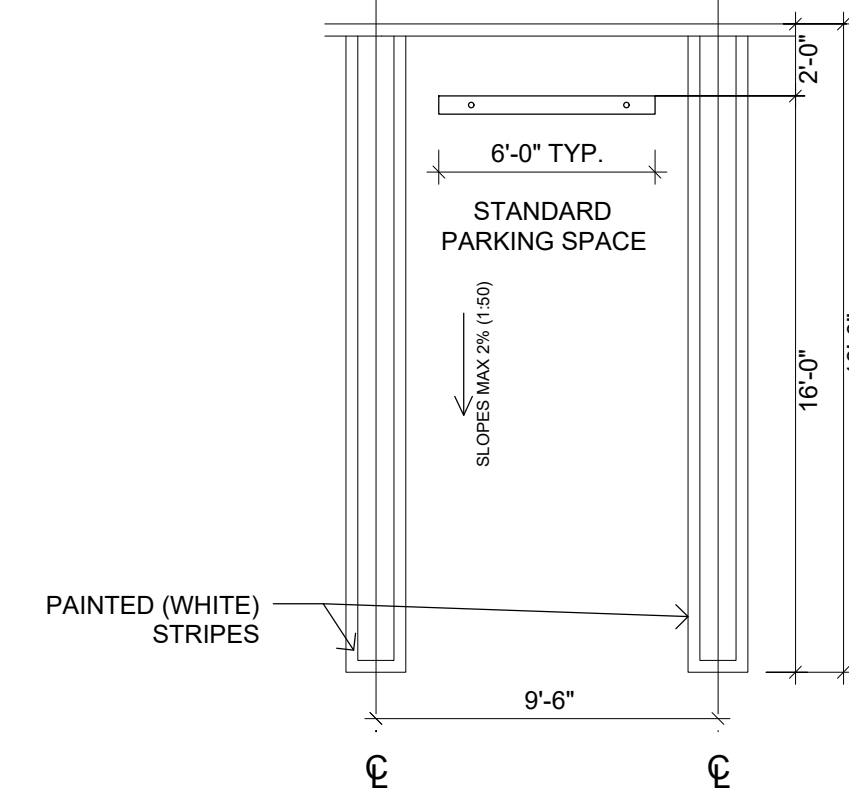
A-102



2 ENLARGED PUBLIC PARKING PLAN
1" = 20'-0"



3 ACCESSIBLE PARKING/ELECTRIC VEHICLE PARKING DETAIL
3/16" = 1'-0"



4 STANDARD PARKING DETAIL
3/16" = 1'-0"

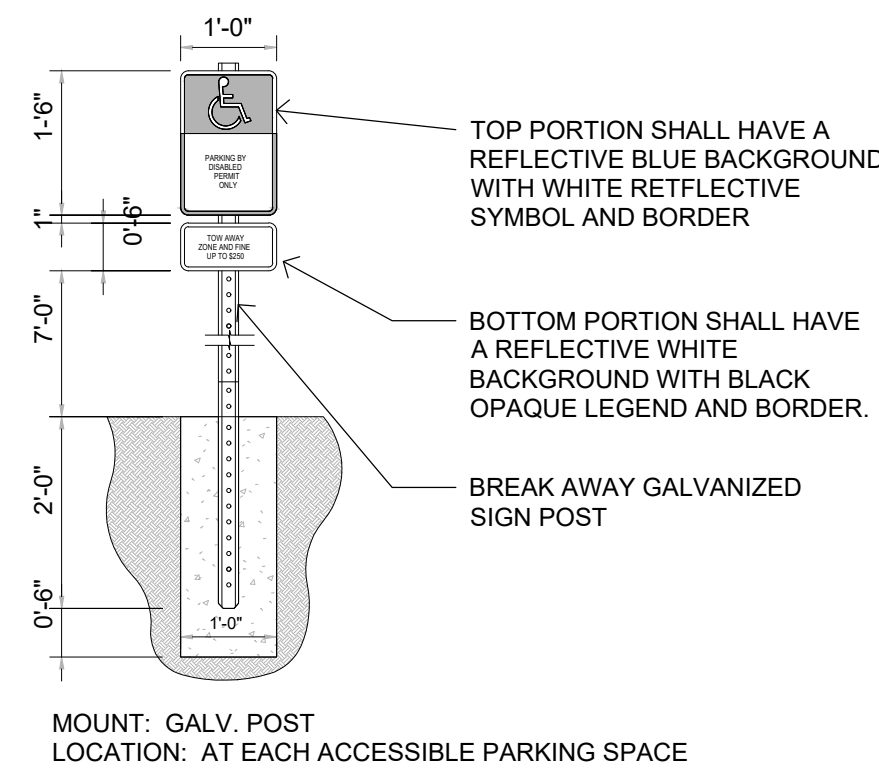
KEY	
X	NUMBER OF PARKING SPACES PER ROW

GENERAL NOTES:	
ALL STRIPING TO BE THERMOPLASTIC TYPE.	

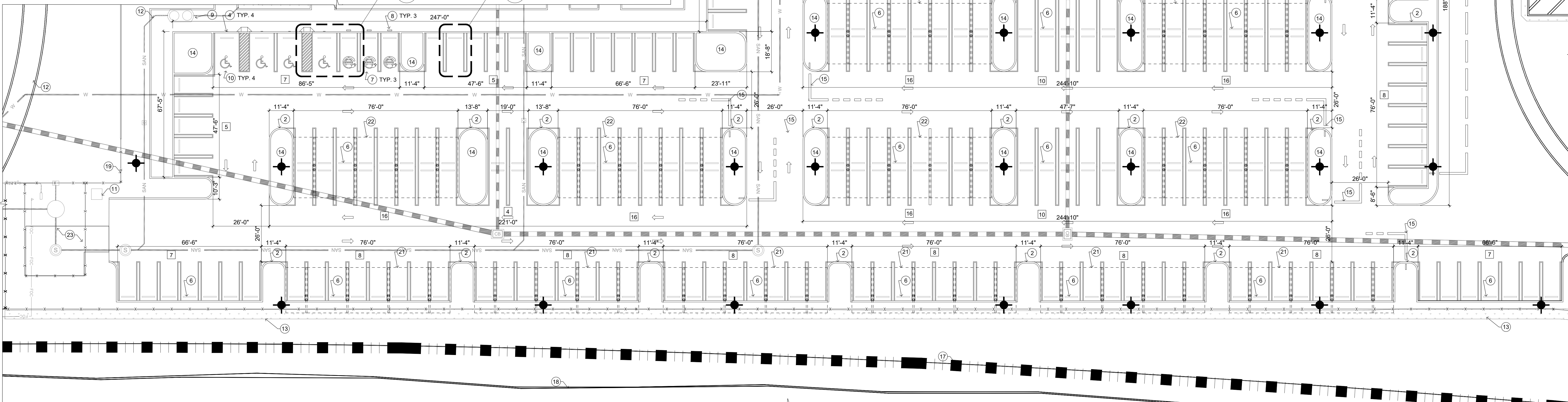
CODED NOTES	
SYM.	CODED NOTES:
1	TWO (2) 6-CUBIC YARD DUMPSTERS (6'X3'X6') SEE SHEET A-104 FOR DETAILS.
2	0 CURB
3	12" X 24" X 8" MASONRY DUMPSTER SCREENING WITH GATE. SEE SHEET A-104 FOR DETAILS.
4	HANDICAP PARKING SIGN TYP.
5	DECORATIVE FENCING AND GATE
6	6" DOUBLE FACE CONCRETE WHEEL STOP TYP.
7	ELECTRIC VEHICLE PARKING
8	ELECTRIC VEHICLE CHARGING STATION
9	GREASE TRAP/SOLID INTERCEPTOR
10	HANDICAP PARKING
11	FPL TRANSFORMER DEDICATED TO LIFT STATION
12	10' CONCRETE WALKWAY TYP.
13	PROPOSED LANDSCAPE BUFFER. SEE LANDSCAPE DRAWINGS FOR DETAILS.
14	PARKING LOT LANDSCAPE ISLAND
15	STOP SIGN AND STOP BAR PAINTED ON ROAD
16	EXISTING CANAL TO BE REMOVED
17	PROPERTY BOUNDARY
18	EXISTING TURNPIKE CANAL
19	PROPOSED CHAIN LINK FENCING
20	DESIGN INTENT SOLARSCAPES MODERN CANOPY PARKING WITH INTEGRATED LED LIGHTING (MODEL OVS) (STANDARD LOW SIDE CLEARANCE) (TYP. 3). SEE A-104 FOR DETAILS.
21	DESIGN INTENT SOLARSCAPES MODERN CANOPY PARKING WITH INTEGRATED LED LIGHTING (MODEL OVS) (TALL LOW SIDE CLEARANCE) (TYP. 6). SEE A-104 FOR DETAILS.
22	DESIGN INTENT SOLARSCAPES MODERN CANOPY PARKING WITH INTEGRATED LED LIGHTING (MODEL VS) (TYP. 8) SEE A-104 FOR DETAILS.
23	PROPOSED 30'X45' LIFT STATION SITE



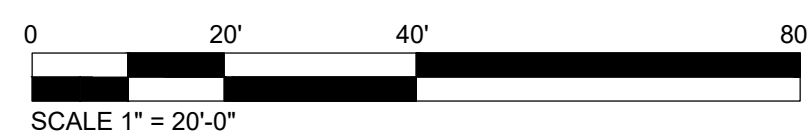
6' DOUBLE FACE CONCRETE WHEEL STOP TYP.



5 ACCESSIBLE PARKING SIGN DETAIL
1/2" = 1'-0"



1 ENLARGED EMPLOYEE PARKING PLAN
1" = 20'-0"



CITY OF PORT ST. LUCIE PUBLIC WORKS BUILDING 1501 SW CAMEO BLVD. PORT ST. LUCIE

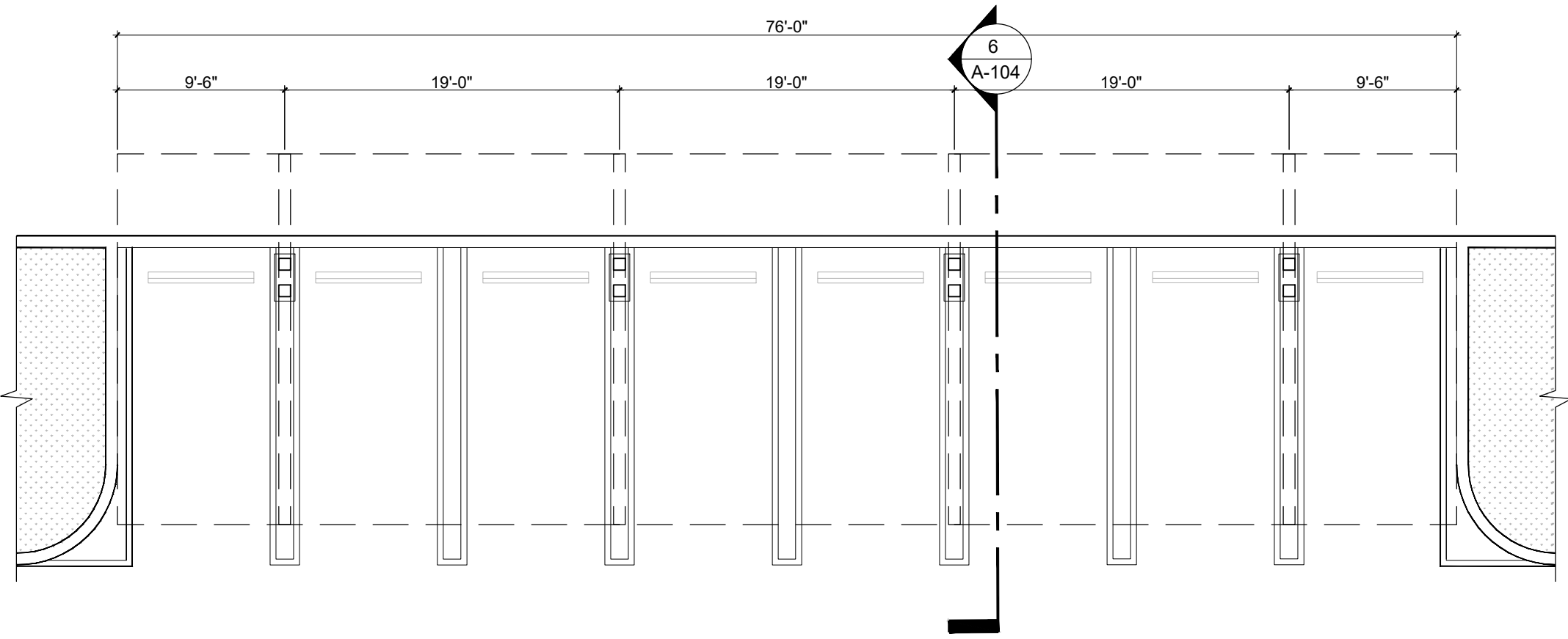
BEA architects Inc.
LICENSE No. AA26001612
11575 NW 7th Ave
Miami, FL 33168
PHONE: (305) 461-2053
FAX: (305) 634-0599
E-mail: info@bea.com
http://www.bea.com



Robert M. Draper R.A.
FL Lic. #: A R96251

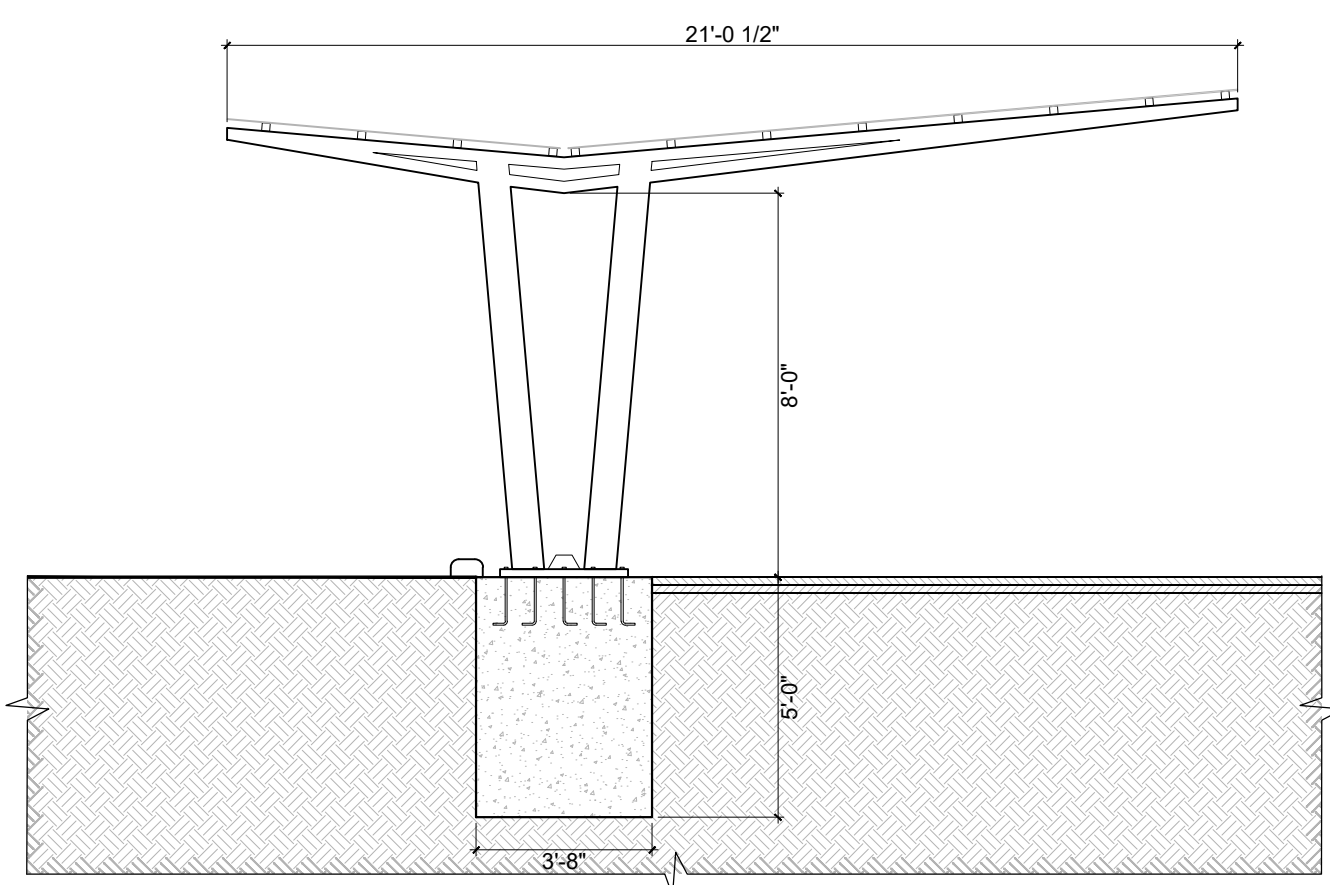
SHEET TITLE: SITE DETAILS		
REVISIONS:		
#	Description:	Date:
PSL PLANNING & ZONING PROJECT NUMBER: P25-201		
PSLUSD PROJECT NUMBER: 5003-58		
SUBMITTAL: SITE PLAN REVIEW		
SCALE: AS SHOWN		
DATE: 1/12/2026		
BEA PROJECT NUMBER: 24-1981		
DRAWN BY:	CHECKED BY:	RD
SHEET NO.:		

A-103



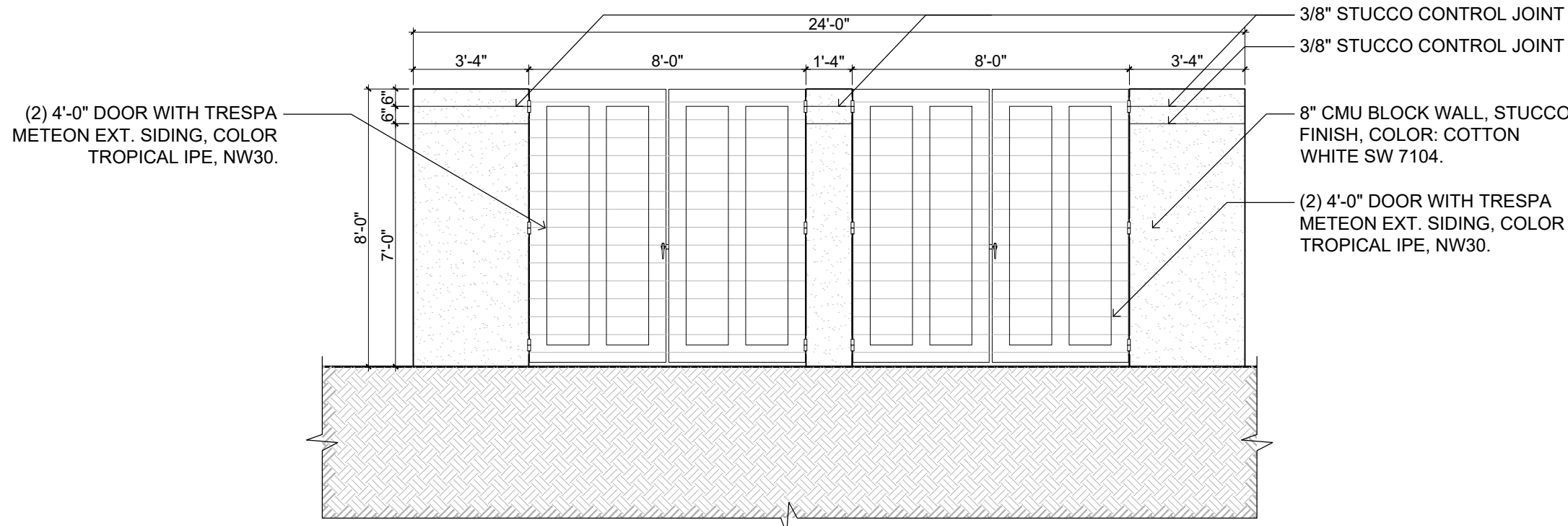
ENLARGED SOLAR CANOPY PLAN
STANDARD LOW SIDE CLEARANCE (MODEL OVS)

3
A-104
1/8" = 1'-0"



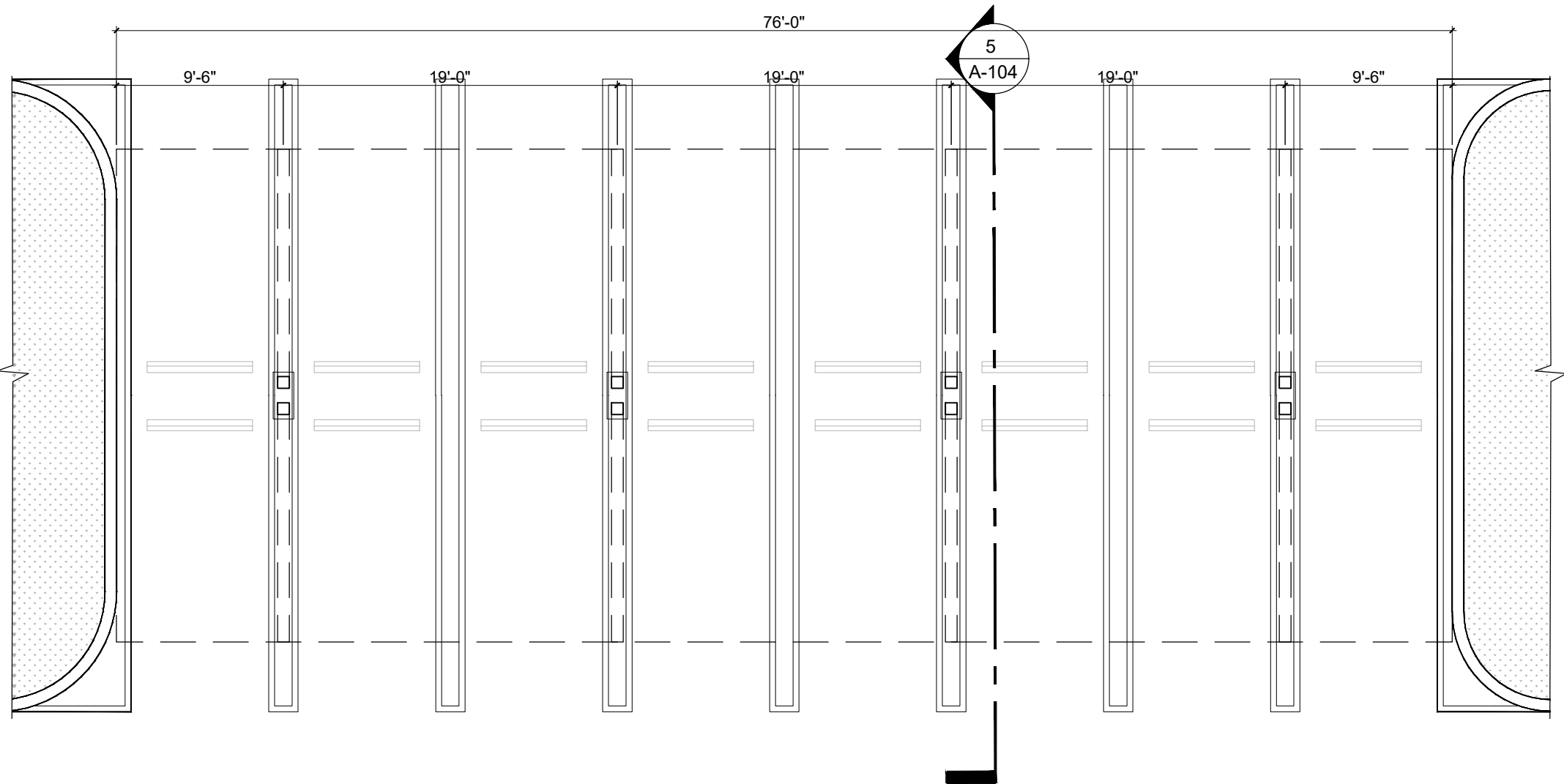
ENLARGED SOLAR CANOPY SECTION
STANDARD LOW SIDE CLEARANCE (MODEL OVS)

6
A-104
1/4" = 1'-0"



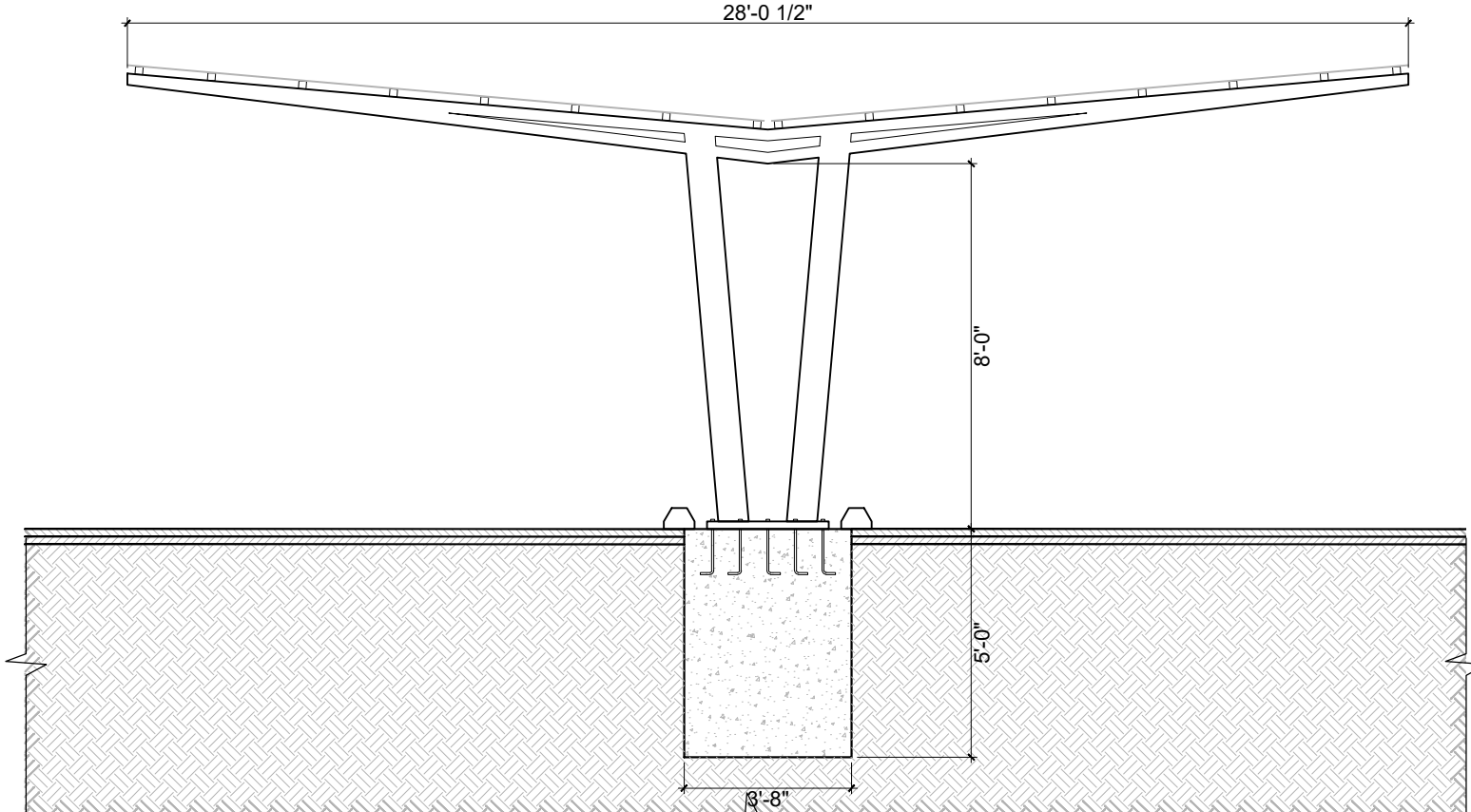
DUMPSTER ENCLOSURE ELEVATION

10
A-104
1/4" = 1'-0"



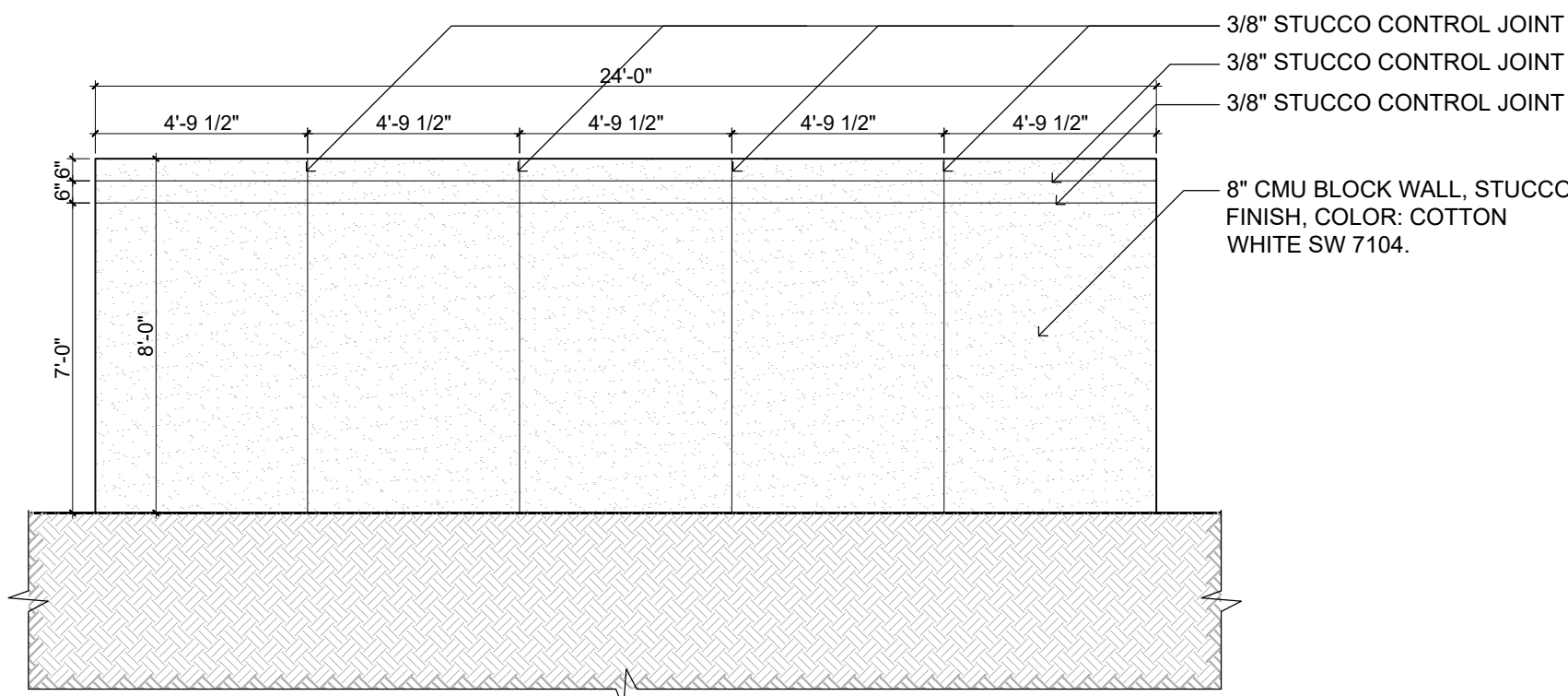
ENLARGED SOLAR CANOPY PLAN
TALL LOW SIDE CLEARANCE (MODEL VS)

2
A-104
1/8" = 1'-0"



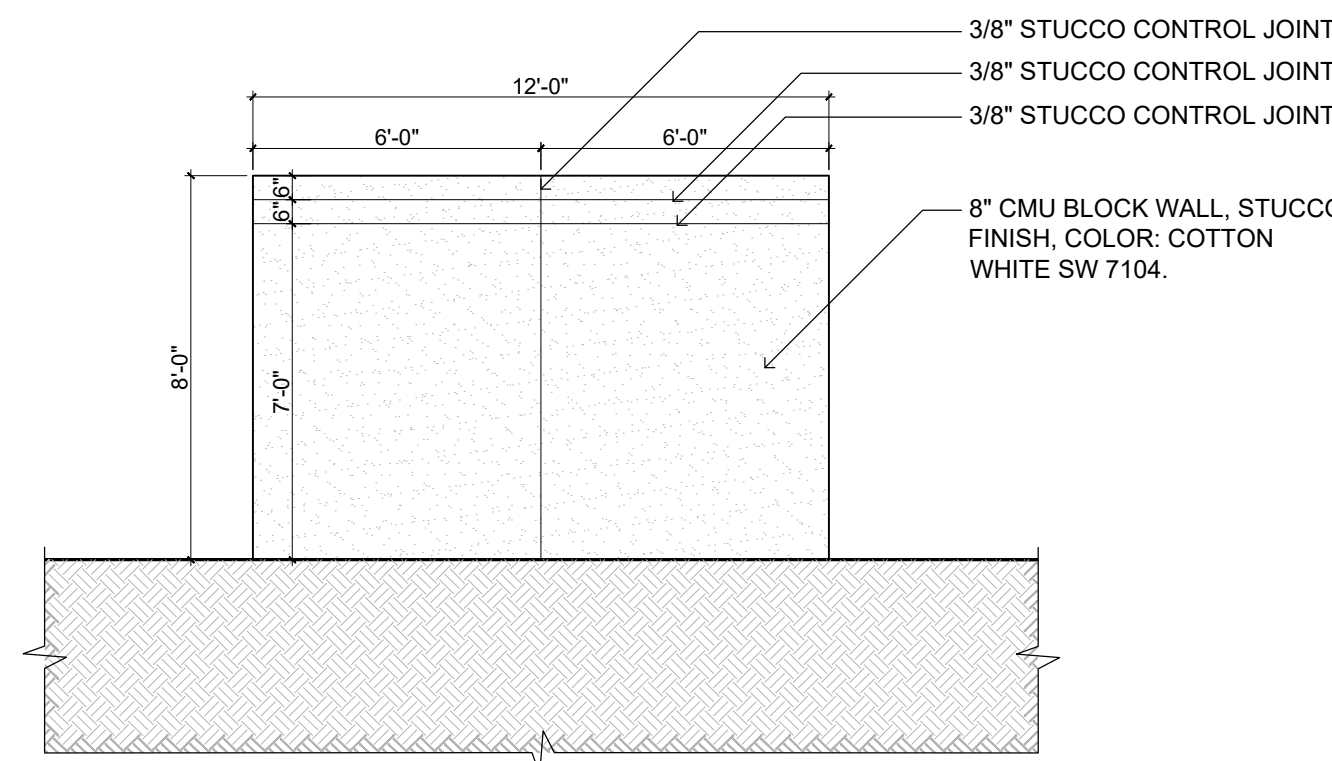
ENLARGED SOLAR CANOPY SECTION
TALL LOW SIDE CLEARANCE (MODEL VS)

5
A-104
1/4" = 1'-0"



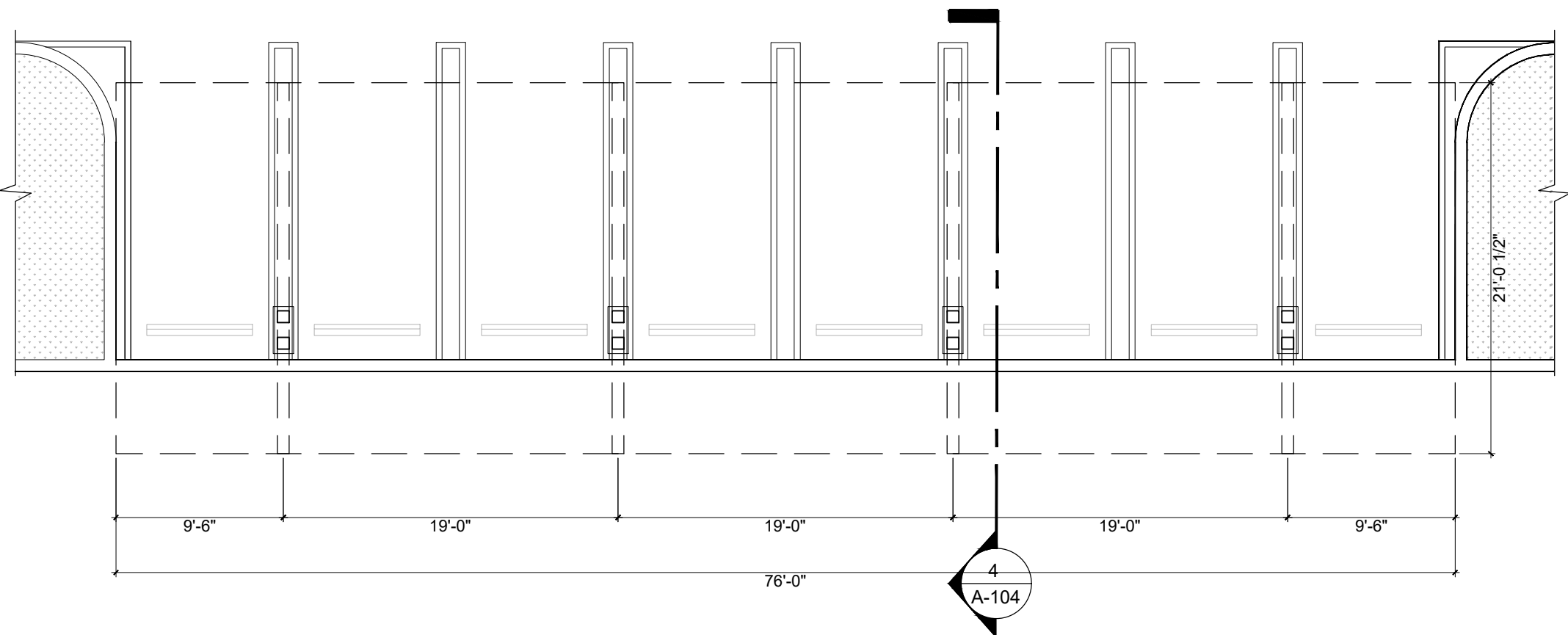
DUMPSTER ENCLOSURE ELEVATION

9
A-104
1/4" = 1'-0"



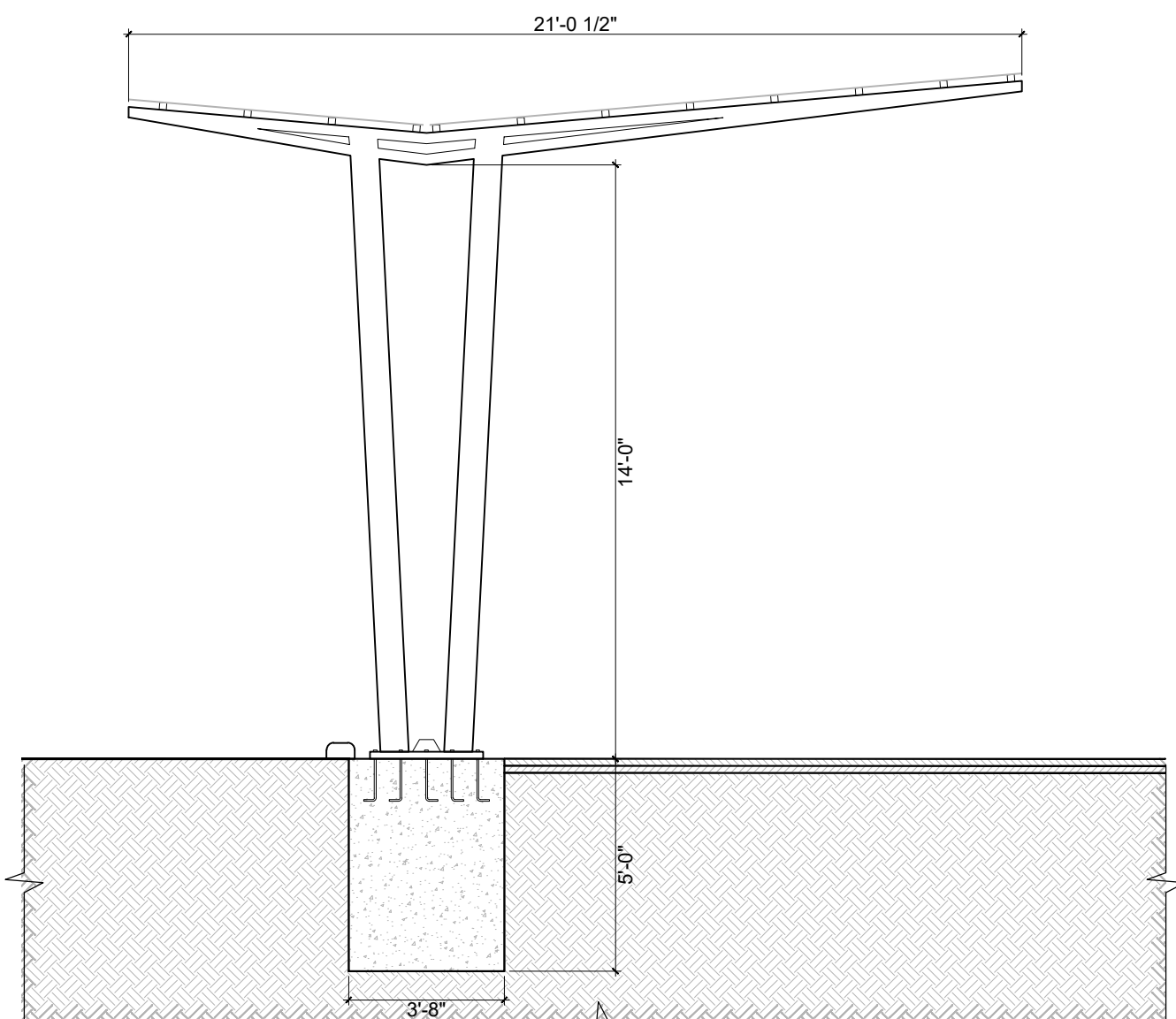
DUMPSTER ENCLOSURE ELEVATION

8
A-104
1/4" = 1'-0"



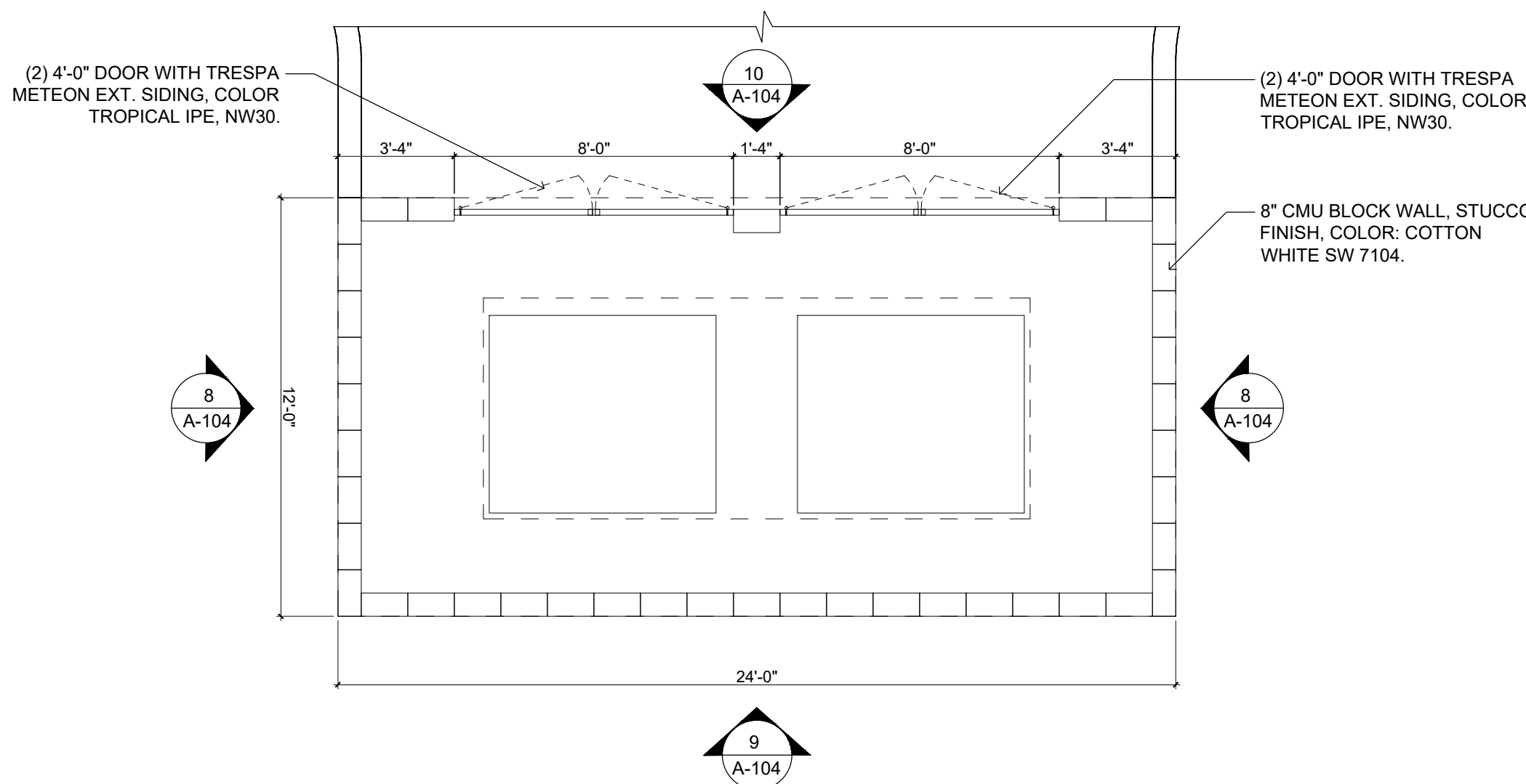
ENLARGED SOLAR CANOPY PLAN
TALL LOW SIDE CLEARANCE (MODEL OVS)

1
A-104
1/8" = 1'-0"



ENLARGED SOLAR CANOPY SECTION
TALL LOW SIDE CLEARANCE (MODEL OVS)

4
A-104
1/4" = 1'-0"



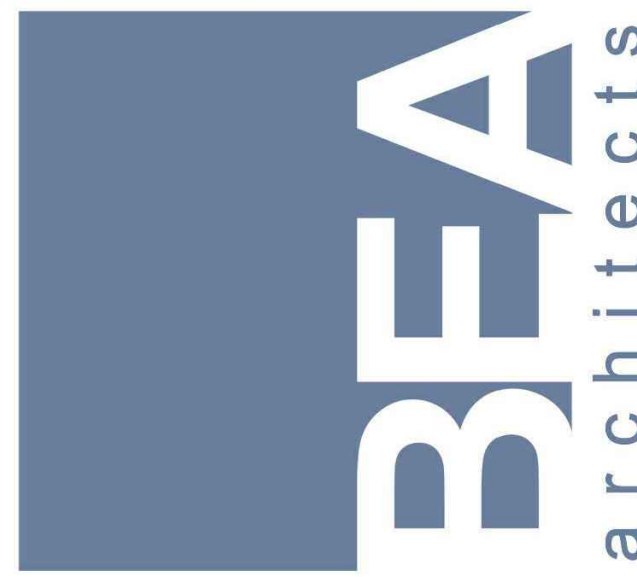
ENLARGED DUMPSTER ENCLOSURE PLAN

7
A-104
1/4" = 1'-0"

GENERAL NOTES:

- G.C. TO PROVIDE SIGNED AND SEALED SHOP DRAWINGS FOR SOLAR CANOPIES. DESIGN INTENT LUMOS SOLARSCAPES MODERN CANOPIES.

BEA architects Inc.
LICENSE No. AA26001612
11575 NW 7th Ave
Miami, FL 33168
PHONE: (305) 461-2053
FAX: (305) 634-0599
E-mail: info@bea.com
http://www.bea.com



Robert M. Draper R.A.
FL LIC. #: A 96257

CITY OF PORT ST. LUCIE
PUBLIC WORKS BUILDING
1501 SW CAMEO BLVD.
PORT ST. LUCIE

© COPYRIGHT BEA architects, INC. THESE DOCUMENTS ARE THE PROPERTY OF BEA architects, INC. ANY REPRODUCTION WITHOUT THE WRITTEN CONSENT OF BEA architects, INC. IS PROHIBITED.

SHEET TITLE:
SITE DETAILS

REVISIONS:

#	Description:	Date:
---	--------------	-------

PSL PLANNING & ZONING PROJECT NUMBER:
P25-201

PSLUSD PROJECT NUMBER:
5003-58

SUBMITTAL:
SITE PLAN REVIEW

SCALE:
AS SHOWN

DATE:
1/12/2026

BEA PROJECT NUMBER:
24-9081

DRAWN BY:

CHECKED BY:

RD

SHEET NO.:

A-104