

PLANT SCHEDULE

SYMBOL	CODE	QTY	BOTANICAL NAME	COMMON NAME	CONTAINER	HEIGHT	WIDTH	NOTES	NATIVE	CALIPER	
TREES											
ELF	9	Elaeocarpus decipiens	Japanese Blueberry Tree	25G	8' HT	4' W	2' CT, STD, F, SP	Non-native	2" Caliper		
'B' TREE: 9 FOUNDATION TREE CREDITS											
IAE	5	Ilex x attenuata 'Eagleston'	Eagleston Holly	65G	14' HT	5' W	SP, 5' CT	Native	2.5" Caliper		
LMM	10	Lagerstroemia indica 'Muskegee'	Muskegee Crape Myrtle	45G	12' HT	6' SPR	ML, SP	Non-native	2.5" Caliper		
'B' TREE: 5 CREDITS											
MB	4	Magnolia grandiflora 'D.D. Blanchard'	D.D. Blanchard Southern Magnolia	65G	14' HT	6' W	FTB, SP	Native	2.5" Caliper		
QV	5	Quercus virginiana	Southern Live Oak	45G	12' HT	6' W	F, SP, 6' CT	Native	2.5" Caliper		
TAC	5	Taxodium distichum	Bald Cypress	FG	12' HT	6' W	4' CT, SP	Native	2.5" Caliper		
PALM TREES											
CP	28	Sabal palmetto	Sabal Palm	FG	10'-18" CT		SLK, HC, SP	Native			
'B' TREE: 9 SITE TREE CREDITS PLUS 10 FOUNDATION TREE CREDITS											
SHRUBS											
ALI	4	Alcantarea imperialis	Imperial Bromeliad	7G	24" GA	18" W	F	Non-native			
CHM	209	Chrysobalanus icaco 'Red Tip'	Red Tip Coccoloba	3G	24" HT	24" W	F, SP	Native			
CLL	172	Clusia guttifera	Small-Leaf Clusia	3G	24" HT	3' W	F	Non-native			
HCA	176	Hamelia patens 'Compacta'	Dwarf Firebush	3G	24" HT	18" W	F	Non-native			
PLU	42	Plumbago auriculata 'Imperial Blue'	Plumbago	3G	24" HT	18" W	F	Non-native			
SRS	10	Serenoa repens 'Cinerea'	Silver Saw Palmetto	7G	24" HT	18" W	F	Native			
TF	83	Tippasium dactyloides	Fakahatchee Grass	3G	24" HT	18" W	F	Native			
GROUND COVERS											
EB	25	Evolvulus glomeratus 'Blue Daze'	Blue Daze	1G	12" HT	12" W	F	Non-native	18" o.c.		
SOD											
SOD2	TBD	Paspalum notatum	Bahia Grass	SOD				Free of Weeds and Pests			
SOD1	TBD	Stenotaphrum secundatum 'Floratum'	Floratum St. Augustine Sod	SOD				Free of Weeds and Pests			

Overall Site Data:

Total Site Area: 44,250 sf. (1.01 Ac.)
 Zoning: CG
 Existing Use: Vacant

Required Trees:	Native%	# of Species	Flowering%	Drought Tolerant%	*Palm%
Perimeter: (834/130)	28	50%=14			
Building(s) Foundation Perimeter: (550/30)	19	50%=10			
Parking Islands: (7)	7	75%=6			
Total:	54	30	20%=11	50%=27	*25%=27 (Max)

Provided Trees:	Native	# of Species	Flowering	Drought Tolerant	Palm
Total:	54	35	14	35	19*

NOTE: NO PROTECTED TREES OVER 12" DBH EXIST ON SITE

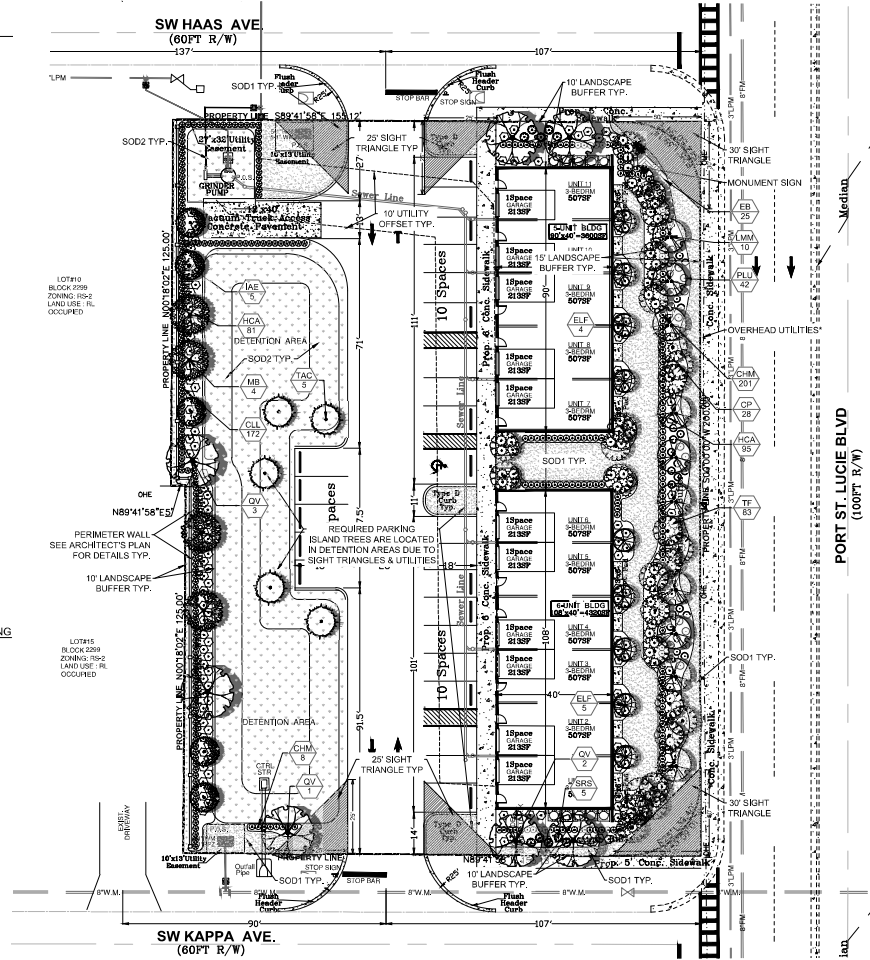
Required Shrubs:	Native%	Drought Tolerant%	
Perimeter: (834/2)	417	25%=105	50%=209
Building(s) Foundation Perimeter: (550/2)	275	25%=69	50%=138
Total:	692	174	347

Provided Shrubs:	Native	Drought Tolerant	
Total:	692	296	468

Index of Drawings
 Landscape Plan LA-1
 Details & Specifications LA-2



Digitally signed by Paul A. Coull
 Date: 2014.03.03 16:33:57 -0400
 DN: cn=Paul A. Coull, o=City of Port Saint Lucie, ou=City of Port Saint Lucie, email=pa@psl.us, c=US
 version: 3
 2014.03.03.2014



PSLUSD Notes for Landscape Plan

- No landscaping shall be planted in a manner that would adversely affect utility easements. Landscaping shall be in compliance with Chapter 154 of the City of Port Saint Lucie Code of Ordinances, PSLUSD technical specifications and policies.
- All landscaping within City utility easements shall comply with PSLUSD technical specifications, policies, and codes.
- All landscaping shall meet the latest PSLUSD Landscape Policy and shall not be placed in a manner that would create conflicts with the intended operation and maintenance of any existing utility.
- Trees shall not be planted within ten (10) feet of any PSLUSD underground infrastructure.
- No landscaping other than sod grasses shall be located within 5' of a PSLUSD appurtenance such as a water meter assembly, backflow device, fire hydrant, or sewer cleanout, etc.

General Landscape Notes

- At least 50% of all required trees shall be of a native species.
- All plant material to be Florida No. 1 or better.
- All landscape & sod areas to be irrigated by an automated system that provides 100% coverage with 100% overlap with a minimum d.u. of .70.
- All landscaping at intersection and corners complies with Section 158.204 of the Port St. Lucie Code of Ordinances to provide a clear sight zone between 2' - 6' above the final road crown elevation. All hedges and shrubs within the 25' sight triangle will be maintained at a height no higher than 2' above the crown elevation of the road. In addition, the foliage line any tree within the 25' sight triangle will be maintained at a height of no less than 6' above the road crown.

*ALL TREES LOCATED ADJACENT TO OVERHEAD UTILITIES MEET FPL'S RIGHT TREE IN THE RIGHT PLACE GUIDELINES.

Project Team
 Landscape Architect
L&S
 LANDSCAPE ARCHITECTURAL SERVICES, LLC
 1708 SE Jay Haven Street
 Port St. Lucie, FL 34983
 (772) 631-9400 | Paul@l-s.com
 Civil Engineer
ABRAHAM CHABAR, P.E.
 7000 W. ROAD, SUITE 400
 PORT ST. LUCIE, FL 34983
 Email: achabar@psl.com
 Tel: 772-372-8555

Hass Town Homes
 810 Haas Avenue
 City of Port Saint Lucie, Florida
Landscape Plan

Revisions		
Date	Init.	Description
6.17.24	PG	1st Submittal
9.04.24	PG	Revised per Site Plan & Comments

PAUL GOULIAS, RLA
 FLORIDA REG. # LA6668607

Drawn By: PG
 Checked By: PG
 Municipal Project:
 Scale:

 SCALE: 1" = 20'
LA-1

