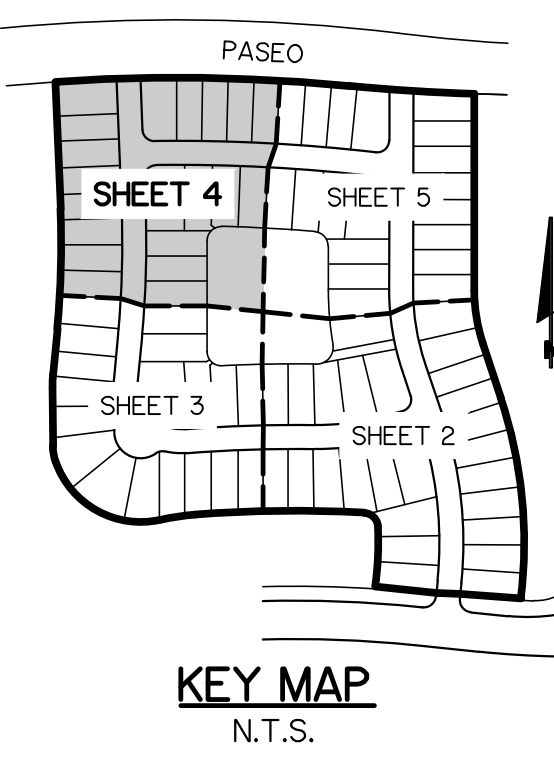


LEGEND

WATER MAIN WITH VALVE, SINGLE WATER SERVICE, DOUBLE WATER SERVICE AND FIRE HYDRANT	— — —	BUFFER EASEMENT	B.E.
SANITARY SEWER MAIN WITH SINGLE SEWER SERVICE, DOUBLE WATER SERVICE, MANHOLE, CALLOUT AND FLOW DIRECTION	— — —	DRAINAGE EASEMENT	D.E.
STORM SEWER WITH CATCH BASIN	— — —	ELEVATION	EL.
BACTERIOLOGICAL SAMPLE POINT	— — —	FINISHED GRADE	FG
STREET LIGHTS	— — —	FIRE HYDRANT	F.H.
PAVEMENT TO BE CONSTRUCTED WITH REQUIRED IMPROVEMENTS	— — —	FORCE MAIN	FM
LOT NUMBER	①	GATE VALVE	GV
		INVERT	INV.
		LANDSCAPE EASEMENT	L.E.
		LAKE MAINTENANCE ACCESS EASEMENT	L.M.A.E.
		LAKE MAINTENANCE EASEMENT	L.M.E.
		MANHOLE	MH
		OPEN SPACE	O.S.
		POINT OF SERVICE	P.O.S.
		CITY OF PORT ST. LUCIE UTILITY EASEMENT	P.S.L.U.E.
		CITY OF PORT ST. LUCIE UTILITY SYSTEMS DEPARTMENT	PSLUSD
		SANITARY SEWER	SAN
		TOP OF PIPE	T.O.P.
		UTILITY EASEMENT	U.E.
		UTILITY EASEMENT - RESTRICTED AREA (SEE "U.E." PLAT DEDICATION)	U.E.-R.A.
		WATER MAIN	WM

- NOTES:**
- ALL CONSTRUCTION SHALL BE IN ACCORDANCE WITH THE CITY OF PORT ST. LUCIE UTILITY SYSTEMS DEPARTMENT (PSLUSD) UTILITY STANDARDS MANUAL, 2019 EDITION AS WELL AS THE PSLUSD UTILITY STANDARD DETAILS, 2019 EDITION. A COPY OF THE 2019 EDITION OF THE PSLUSD UTILITY STANDARDS MANUAL AND UTILITY STANDARD DETAILS SHALL BE AVAILABLE ON-SITE AT ALL TIMES UTILITY RELATED WORK IS BEING PERFORMED.
 - PRIOR TO CONSTRUCTION IT IS THE RESPONSIBILITY OF THE CONTRACTOR TO FIELD VERIFY (ELEVATION AND LOCATION) ALL EXISTING UTILITIES. ANY DISCREPANCIES SHALL BE BROUGHT TO THE ATTENTION OF THE ENGINEER PRIOR (EOR) TO CONTINUATION OF WORK.
 - THERE SHALL BE NO FIELD CHANGES OR DEVIATIONS FROM DESIGN WITHOUT PRIOR WRITTEN APPROVAL OF THE PSLUSD AND EOR.
 - ELEVATIONS - ALL ELEVATIONS REFER TO NORTH AMERICAN VERTICAL DATUM OF 1988 (NAVD88).
 - ALL WATER AND WASTEWATER PRESSURE MAINS SHALL BE PVC, C-900, DR18 (PRESSURE CLASS 235).
 - ALL GRAVITY SEWER PIPE, FITTINGS AND SERVICE LINES SHALL BE PVC, SDR 26 AND, AS A MINIMUM, CONFORM TO ASTM D-3034.
 - VALVES SHALL NOT BE PLACED IN CURBS, GUTTERS, SIDEWALKS, PARKING SPACES AND HANDICAP RAMPS. WHERE CONCRETE VALVE PADS TO BE OWNED BY PSLUSD ARE ADJACENT TO SIDEWALKS, THE PADS SHALL BE POURED AS PART OF THE SIDEWALK POUR WITH NO JOINTS.



WATER AND SANITARY SERVICES

LOT No.	TYPE	AS-BUILT COORDINATE
59/60	DSS	-
60/61	DWS	-
61/62	DSS	-
62/63	DWS	-
63/64	DSS	-
64	SWS	-
65	SWS	-
65/66	DSS	-
66/67	DWS	-
67	SSS	-
68	SSS	-
68/69	DWS	-
69/70	DSS	-
70/71	DWS	-
71/72	DSS	-
72/73	DWS	-
104/105	DWS	-
105/106	DSS	-
106/107	DWS	-
107	SSS	-
108	SWS	-
108/109	DSS	-
109/110	DWS	-
110/111	DSS	-
111/112	DWS	-

SWS = SINGLE WATER SERVICE, DWS = DOUBLE WATER SERVICE
 SSS = SINGLE SEWER SERVICE, DSS = DOUBLE SEWER SERVICE

WATER AND SEWER PLAN
FOR
RIVERLAND-PARCEL B
PLAT TWO

NO.	DATE	BY	CHK

GLH ENGINEERING, LLC
 1600 SAWGRASS CORPORATE
 PARKWAY, SUITE 400
 SUNRISE, FLORIDA 33323
 PHONE: (954) 753-1730

SCALE: 1"=40'
 DATE: 7/26/21
 DESIGNED BY: AQC
 CHECKED BY: BA
 FILE NAME:
 RIV-B PL 2 WS

BRIAN ARNOLD, P.E.
 FLORIDA P.E. #81294

RIV-B PL 2 WS
 SHEET 4 OF 7

NOTE: ALL GRADES SHOWN ARE IN NAVD88
 P21-105 (PSLUSD 5266C)

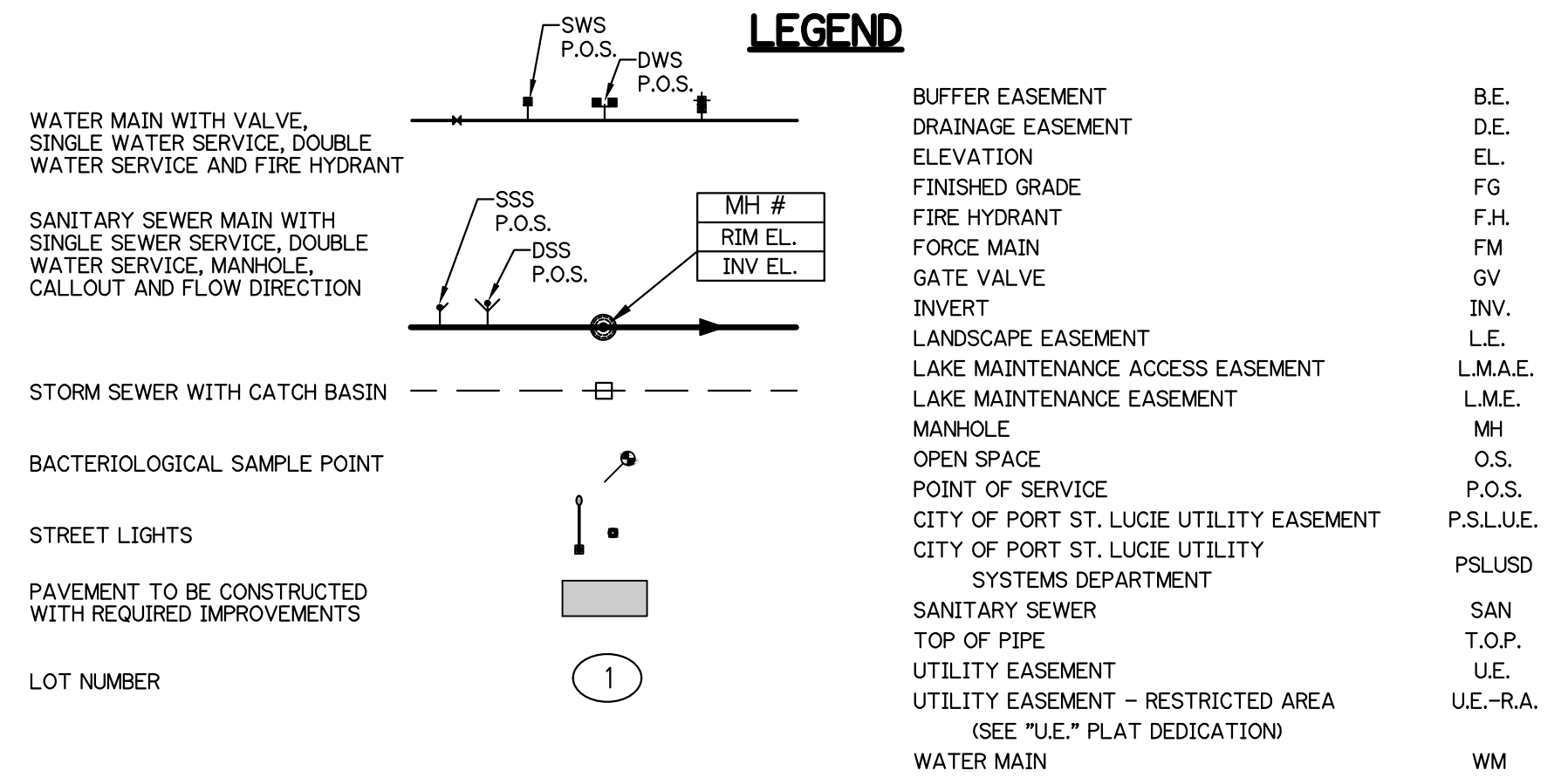
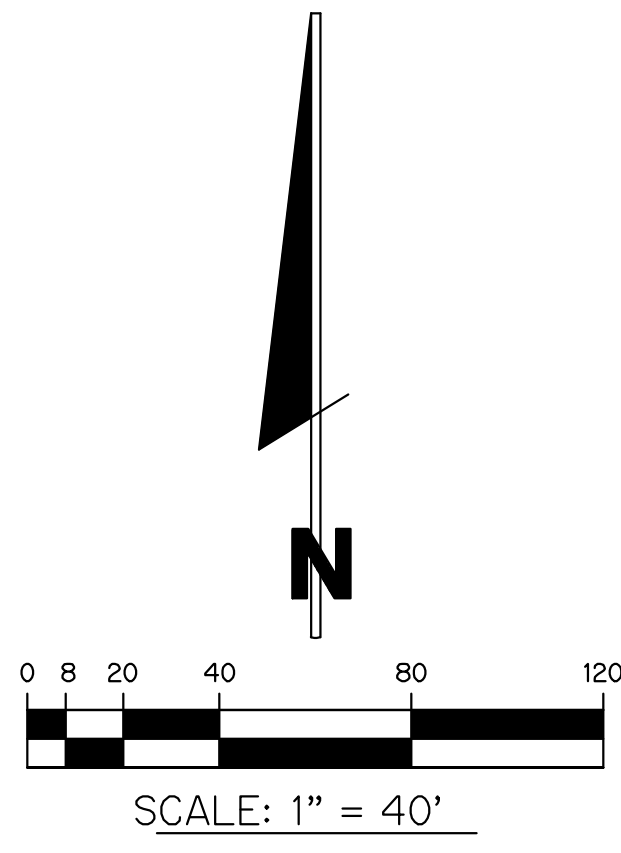
**WATER AND SEWER PLAN
FOR
RIVERLAND-PARCEL B
PLAT TWO**

REVISIONS	DATE	BY	CK

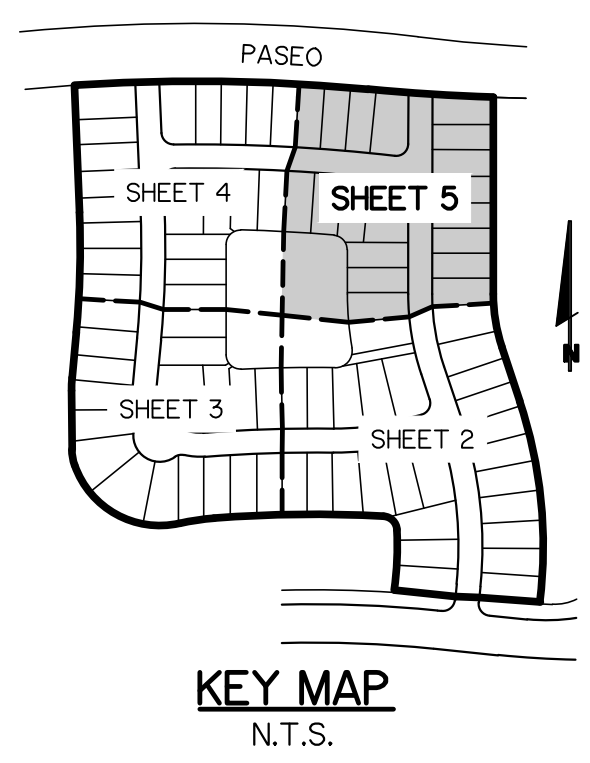
GLH ENGINEERING, LLC
 1600 SAWGRASS CORPORATE
 PARKWAY, SUITE 400
 SUNRISE, FLORIDA 33323
 PHONE: (954) 753-1730

SCALE: 1"=40'
 DATE: 7/26/21
 DESIGNED BY: AQC
 CHECKED BY: BA
 FILE NAME:
 RIV-B PL 2 WS

BRIAN ARNOLD, P.E.
 FLORIDA P.E. #81294
 RIV-B PL 2 WS
 SHEET 5 OF 7

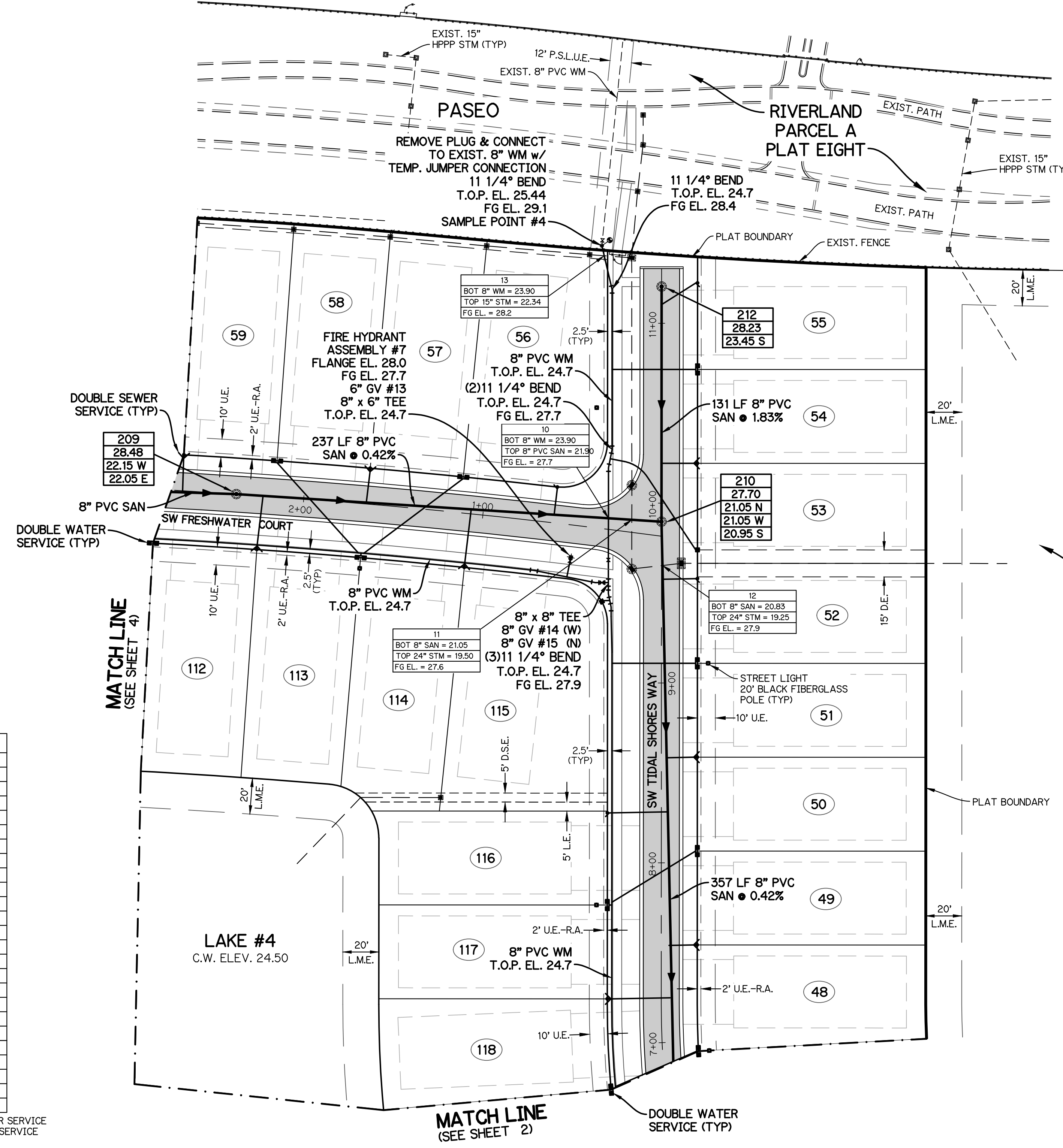


- NOTES:**
- ALL CONSTRUCTION SHALL BE IN ACCORDANCE WITH THE CITY OF PORT ST. LUCIE UTILITY SYSTEMS DEPARTMENT (PSLUSD) UTILITY STANDARDS MANUAL, 2019 EDITION AS WELL AS THE PSLUSD UTILITY STANDARD DETAILS, 2019 EDITION. A COPY OF THE 2019 EDITION OF THE PSLUSD UTILITY STANDARDS MANUAL AND UTILITY STANDARD DETAILS SHALL BE AVAILABLE ON-SITE AT ALL TIMES UTILITY RELATED WORK IS BEING PERFORMED.
 - PRIOR TO CONSTRUCTION IT IS THE RESPONSIBILITY OF THE CONTRACTOR TO FIELD VERIFY ELEVATION AND LOCATION ALL EXISTING UTILITIES. ANY DISCREPANCIES SHALL BE BROUGHT TO THE ATTENTION OF THE ENGINEER PRIOR (EOR) TO CONTINUATION OF WORK.
 - THERE SHALL BE NO FIELD CHANGES OR DEVIATIONS FROM DESIGN WITHOUT PRIOR WRITTEN APPROVAL OF THE PSLUSD AND EOR.
 - ELEVATIONS - ALL ELEVATIONS REFER TO NORTH AMERICAN VERTICAL DATUM OF 1988 (NAVD88).
 - ALL WATER AND WASTEWATER PRESSURE MAINS SHALL BE PVC, C-900, DR18 (PRESSURE CLASS 235).
 - ALL GRAVITY SEWER PIPE, FITTINGS AND SERVICE LINES SHALL BE PVC, SDR 26 AND, AS A MINIMUM, CONFORM TO ASTM D-3034.
 - VALVES SHALL NOT BE PLACED IN CURBS, GUTTERS, SIDEWALKS, PARKING SPACES AND HANDICAP RAMPS. WHERE CONCRETE VALVE PADS TO BE OWNED BY PSLUSD ARE ADJACENT TO SIDEWALKS, THE PADS SHALL BE POURED AS PART OF THE SIDEWALK POUR WITH NO JOINTS.

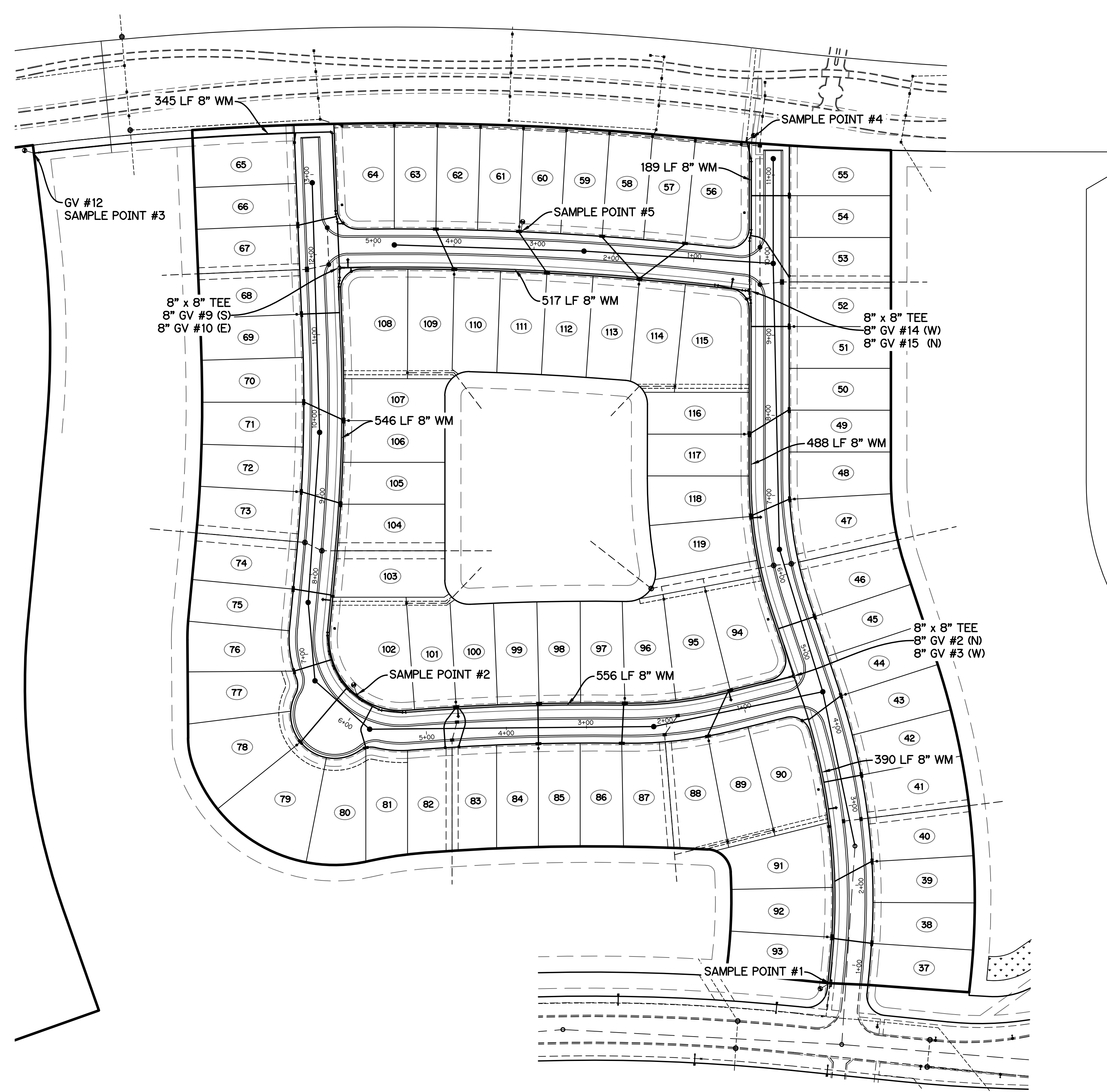


WATER AND SANITARY SERVICES		
LOT No.	TYPE	AS-BUILT COORDINATE
47/48	DWS	-
48/49	DSS	-
49/50	DWS	-
50/51	DSS	-
51/52	DWS	-
52	SSS	-
53	SWS	-
53/54	DSS	-
54/55	DWS	-
55	SSS	-
56	SSS	-
56/57	DWS	-
57/58	DSS	-
58/59	DWS	-
59/60	DSS	-
111/112	DWS	-
112/113	DSS	-
113/114	DWS	-
114/115	DSS	-
115	SWS	-
116	SSS	-
116/117	DWS	-
117/118	DSS	-
118/119	DWS	-

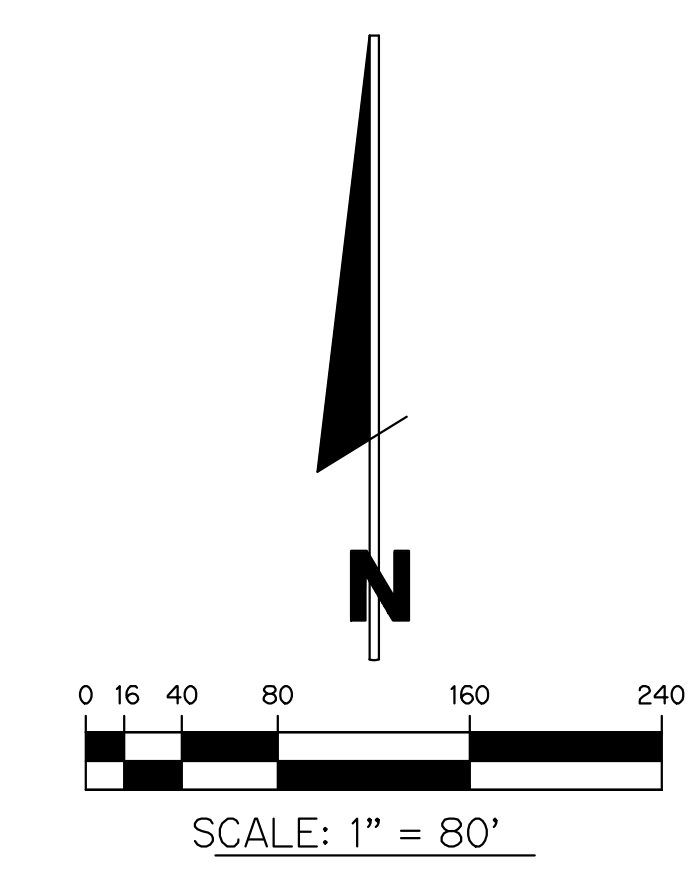
SWS = SINGLE WATER SERVICE, DWS = DOUBLE WATER SERVICE
 SSS = SINGLE SEWER SERVICE, DSS = DOUBLE SEWER SERVICE



NOTE: ALL GRADES SHOWN ARE IN NAVD88
 P21-105 (PSLUSD 5266C)



- NOTES:
1. ALL CONSTRUCTION SHALL BE IN ACCORDANCE WITH THE CITY OF PORT ST. LUCIE UTILITY SYSTEMS DEPARTMENT (PSLUSD) UTILITY STANDARDS MANUAL, 2019 EDITION AS WELL AS THE PSLUSD UTILITY STANDARD DETAILS, 2019 EDITION. A COPY OF THE 2019 EDITION OF THE PSLUSD UTILITY STANDARDS MANUAL AND UTILITY STANDARD DETAILS SHALL BE AVAILABLE ON-SITE AT ALL TIMES UTILITY RELATED WORK IS BEING PERFORMED.
 2. PRIOR TO CONSTRUCTION IT IS THE RESPONSIBILITY OF THE CONTRACTOR TO FIELD VERIFY (ELEVATION AND LOCATION) ALL EXISTING UTILITIES. ANY DISCREPANCIES SHALL BE BROUGHT TO THE ATTENTION OF THE ENGINEER PRIOR (EOR) TO CONTINUATION OF WORK.
 3. THERE SHALL BE NO FIELD CHANGES OR DEVIATIONS FROM DESIGN WITHOUT PRIOR WRITTEN APPROVAL OF THE PSLUSD AND EOR.
 4. ELEVATIONS - ALL ELEVATIONS REFER TO NORTH AMERICAN VERTICAL DATUM OF 1988 (NAVD88).
 5. ALL WATER AND WASTEWATER PRESSURE MAINS SHALL BE PVC, C-900, DR18 (PRESSURE CLASS 235).
 6. ALL GRAVITY SEWER PIPE, FITTINGS AND SERVICE LINES SHALL BE PVC, SDR 26 AND, AS A MINIMUM, CONFORM TO ASTM D-3034.
 7. VALVES SHALL NOT BE PLACED IN CURBS, GUTTERS, SIDEWALKS, PARKING SPACES AND HANDICAP RAMPS; WHERE CONCRETE VALVE PADS TO BE OWNED BY PSLUSD ARE ADJACENT TO SIDEWALKS, THE PADS SHALL BE POURED AS PART OF THE SIDEWALK POUR WITH NO JOINTS.



LEGEND

SAMPLE POINT

WATER MAIN

OVERALL WATER SAMPLE POINT MAP
FOR
RIVERLAND-PARCEL B
PLAT TWO

REVISIONS	DATE	BY	CK

GLH ENGINEERING, LLC
 1600 SAWGRASS CORPORATE
 PARKWAY, SUITE 400
 SUNRISE, FLORIDA 33323
 PHONE: (954) 753-1730

SCALE: 1"=80'
 DATE: 7/26/21
 DESIGNED BY: AQC
 CHECKED BY: BA
 FILE NAME:
 RIV-B PL 2 WS

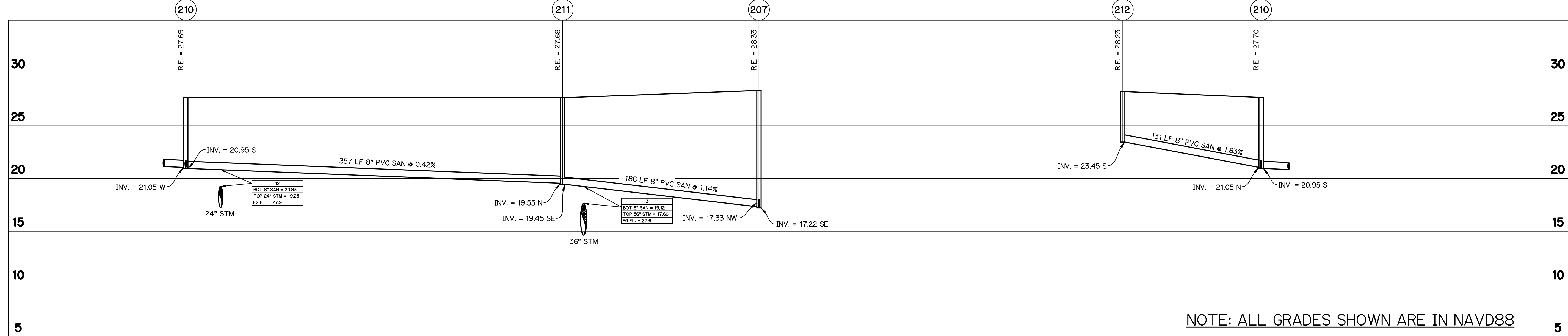
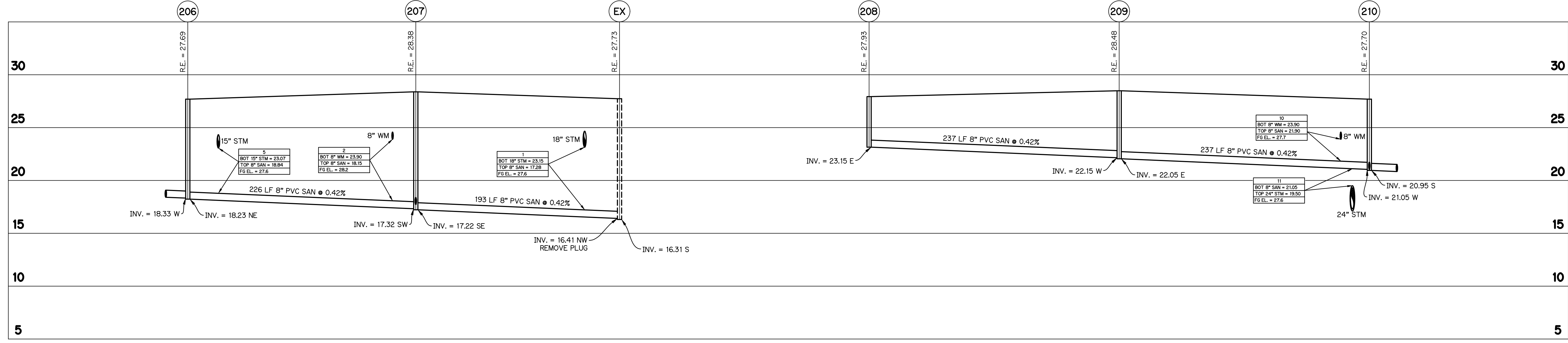
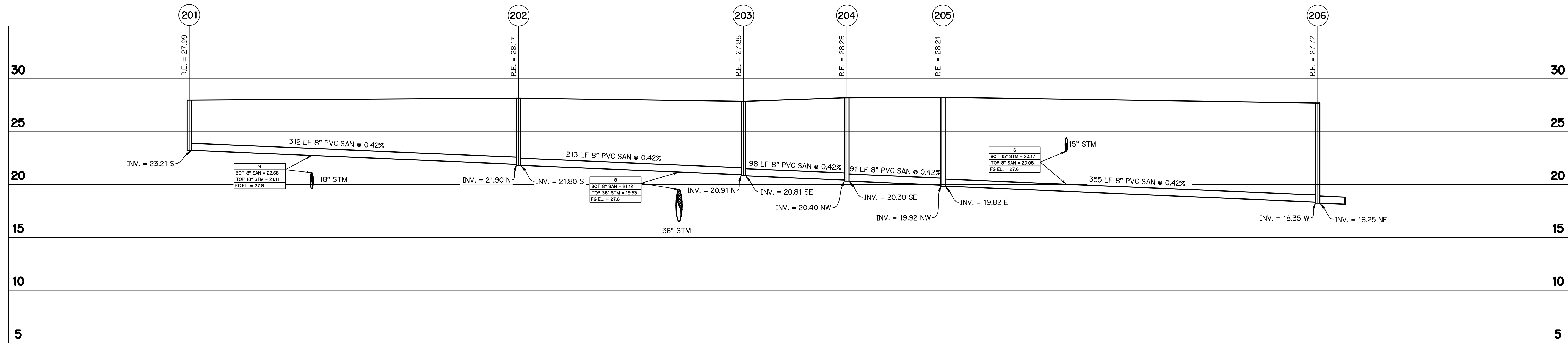
BRIAN ARNOLD, P.E.
 FLORIDA P.E. #81294

RIV-B PL 2 WS

SHEET 6 OF 7

NOTE: ALL GRADES SHOWN ARE IN NAVD88
 P21-105 (PSLUSD 5266C)

SEWER PROFILES
FOR
RIVERLAND-PARCEL B
PLAT TWO



NOTE: ALL GRADES SHOWN ARE IN NAVD88

NO.	DATE	BY	CHK

GLH ENGINEERING, LLC
1600 SAWGRASS CORPORATE
PARKWAY, SUITE 400
SUNRISE, FLORIDA 33323
PHONE: (954) 753-1730

SCALE: HORIZ: 1" = 50'
VERT: 1" = 5'
DATE: 7/26/21
DESIGNED BY: AQC
CHECKED BY: BA
FILE NAME:
RIV-B PL 2 WS

BRIAN ARNOLD, P.E.
FLORIDA P.E. #81294

RIV-B PL 2 WS

SHEET 7 OF 7