

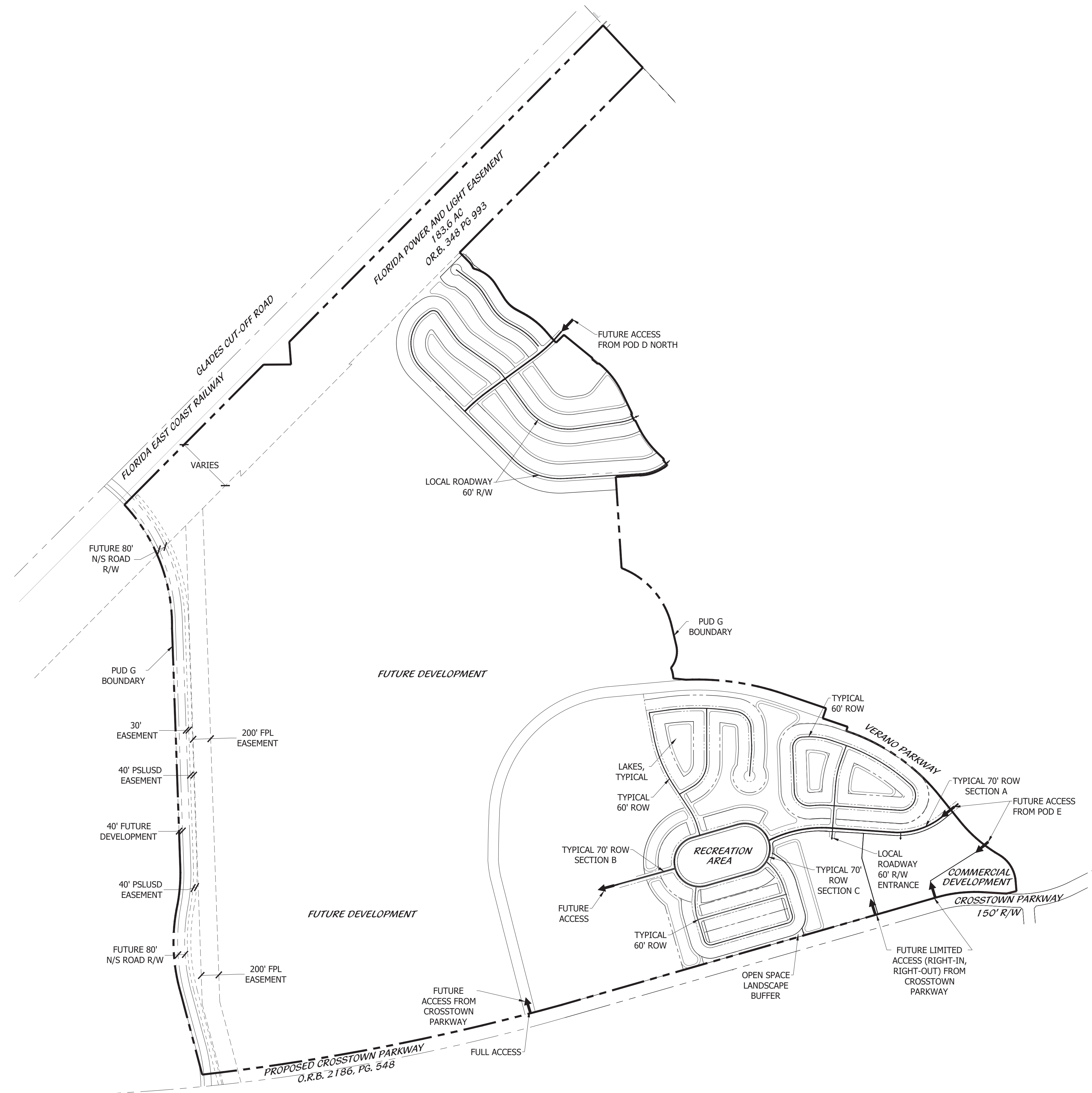
Cotleur & Hearing

Landscape Architects
Land Planners
Environmental Consultants

1934 Commerce Lane
Suite 1
Jupiter, Florida 33458
561.747.6336 · Fax 747.1377
www.cotleurhearing.com
Lic# LC-C000239

VERANO SOUTH POD G

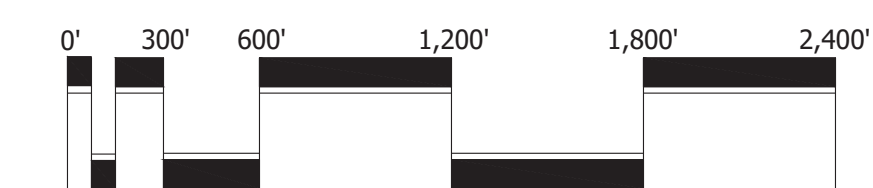
Kolter Homes
Port St. Lucie, Florida



LEGEND

- FUTURE VERANO PUD G BOUNDARY
- ➔ INGRESS/ EGRESS TO PUD/SITE

PSLUSD #11-652-36
PSL PROJ# P20-080
CONCEPTUAL MASTER PLAN POD G



Scale: 1" = 600'-0"



North

DESIGNED	LAH
DRAWN	LAH
APPROVED	DTS
JOB NUMBER	18-1003
DATE	05-06-20
REVISIONS	08-05-20
	10-21-20
	09-04-20
	11-17-20
	10-06-20

November 17, 2020 10:18:47 a.m.
Drawing 18-1003 CONCEPTUAL MASTER PLAN G_11-17-20.DWG

SHEET 1 OF 1

© COTLEUR & HEARING, INC.
These drawings are the property of the architect and are not to be used for extensions or on other projects except by agreement in writing with the architect. Immediately report any discrepancies to the architect.