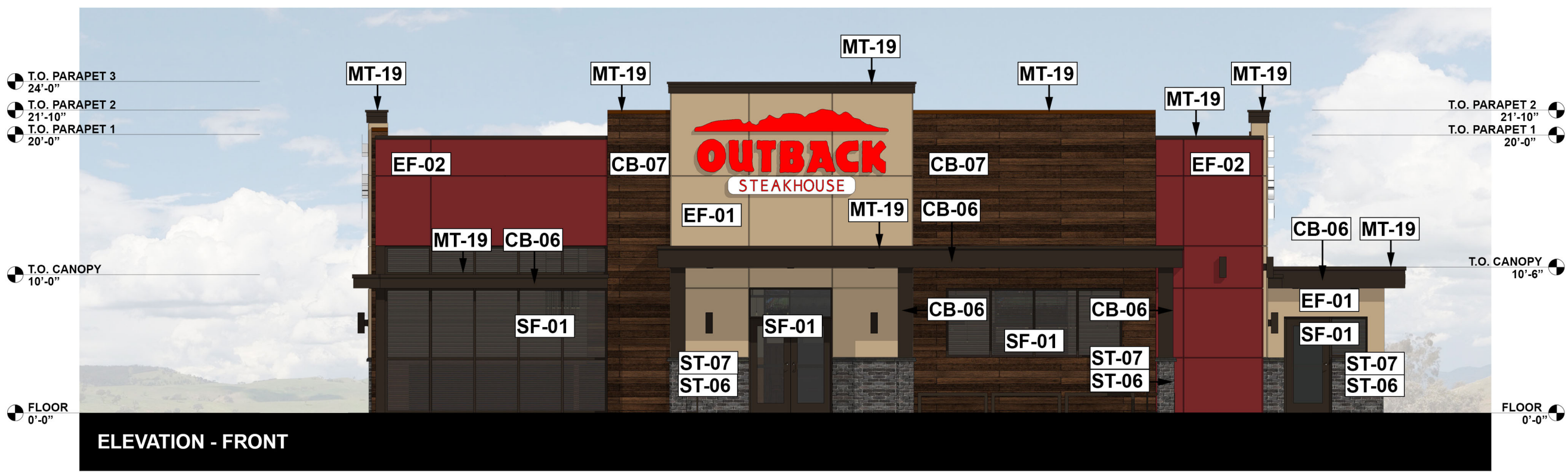
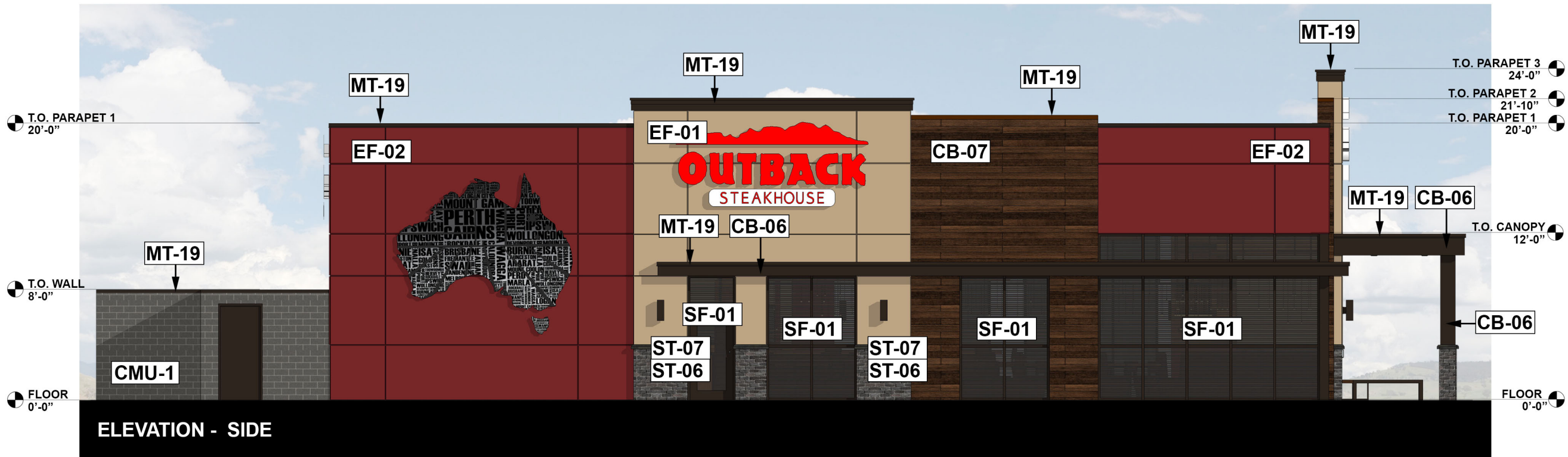


# JOEY PROTOTYPE TA RIGHT

## EXTERIOR FINISH SCHEDULE

EXTERIOR EIFS			
TYPE	REMARKS		
EF-01	INTEGRAL COLOR EIFS: STOTHERM @ XPS OR DRYVIT OUTSULATION PLUS EIFS SYSTEM COLOR: PT-69   MANUFACTURER: STO OR DRYVIT NOTES: FINE SAND FINISH   METAL COPING TO BE: MT-19		
EF-02	INTEGRAL COLOR EIFS: STOTHERM @ XPS OR DRYVIT OUTSULATION PLUS EIFS SYSTEM COLOR: PT-68   MANUFACTURER: STO OR DRYVIT NOTES: FINE SAND FINISH   METAL COPING TO BE: MT-19		
CONTACT: WGREENE@STOCORP.COM   WEBSITE: WWW.STOCORP.COM			
MASONRY			
TYPE	REMARKS		
ST-06	TUNDRABRICK STONE VENEER, COLOR: IRONSIDE		
ST-07	SPLIT-EDGE WAINSCOT SILL, COLOR: PEWTER		
CMU-1	8" BURNISHED CMU, AMCOM CONCRETE PRODUCTS LLC, 951 - ONYX		
EXTERIOR PAINT			
TYPE	COLOR NUMBER	PRODUCT NAME	
PT-11	TURKISH COFFEE	SW9076	SHERWIN WILLIAMS
PT-68	BOLERO RED	SW7600	SHERWIN WILLIAMS
PT-69	DOUBLE LATTE	SW9108	SHERWIN WILLIAMS
ALUMINUM BRAKE METAL			
MT-19	METAL COPING COLOR: COPPER BROWN MANUFACTURER: BERRIDGE		
MT-20	CORRUGATED METAL PANEL COLOR: MANSARD BROWN MANUFACTURER/ITYP: PAC-CLAD, PAC HWC 16"24 GAGE		
STOREFRONT			
SF-01	STOREFRONT COLOR: MATCH SW6076 TURKISH COFFEE		
FIBER CEMENT SIDING			
CB-06	CEMENT BOARD SIDING COLOR: PRIMED FOR PAINTING, (PT-11) HARDIEPANEL SELECT CEDARMILL MANUFACTURER: JAMES HARDIE		
CB-07	FIBER CEMENT SIDING COLOR: ROUGH SAWN, ESPRESSO # AWP30-30 MANUFACTURER: NICHHA USA, INC CONTACT: (770) 805-9466		



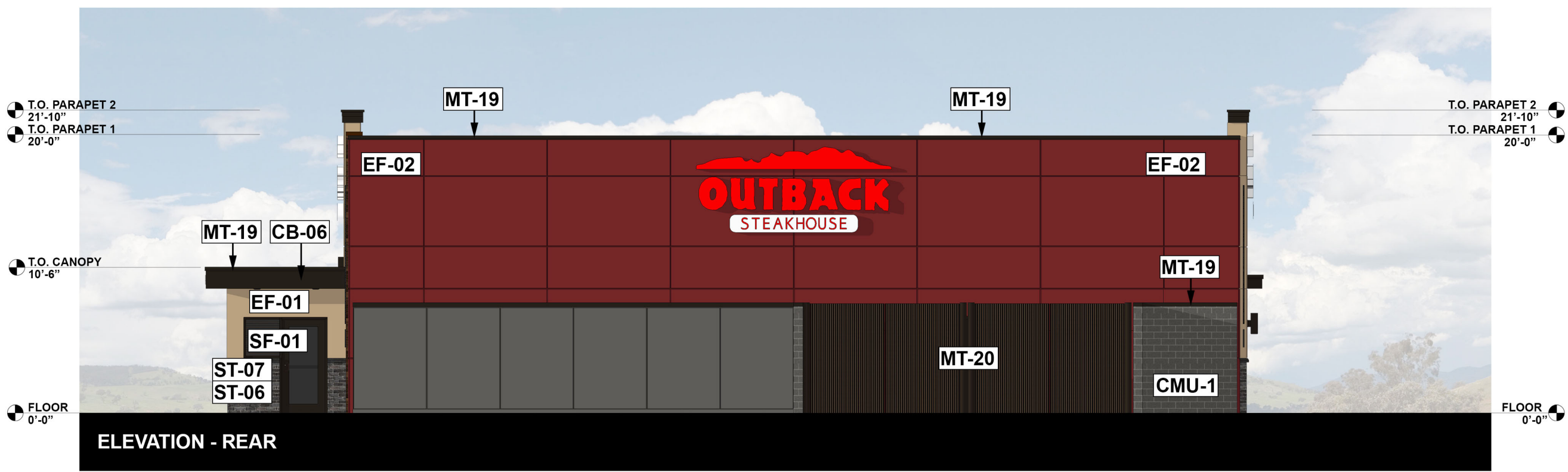
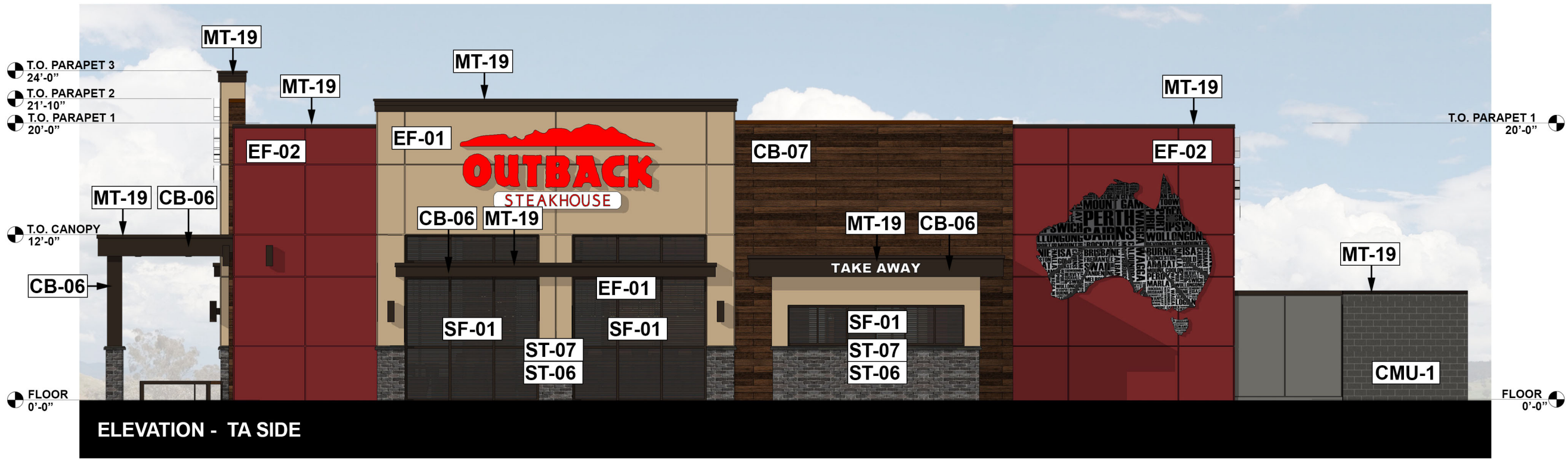
**NOTE: ALL ROOFTOP EQUIPMENT IS SCREENED BY PROPOSED PARAPETS**



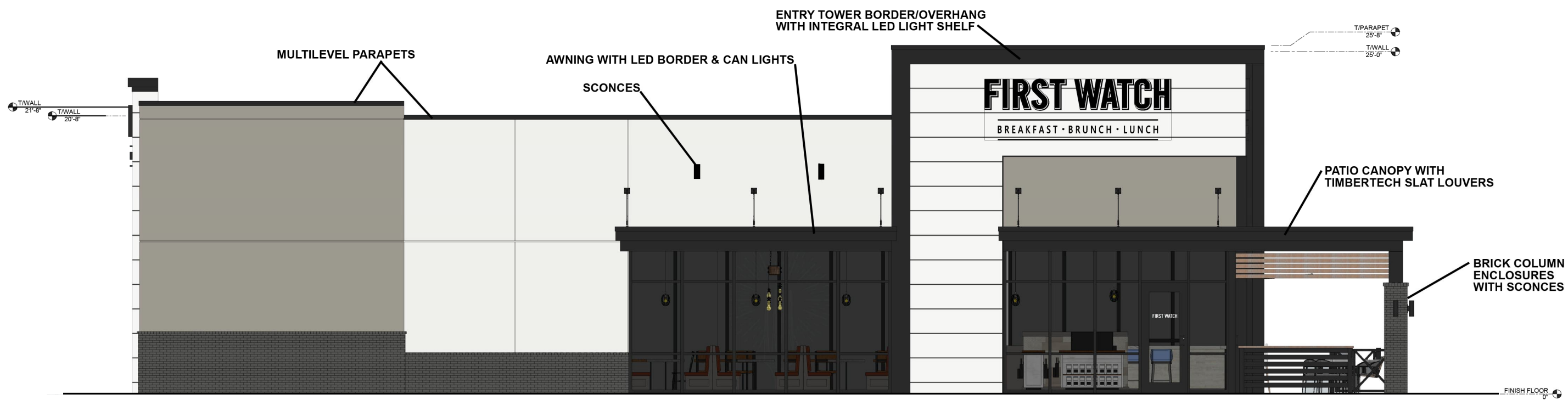
# JOEY PROTOTYPE TA RIGHT

## EXTERIOR FINISH SCHEDULE

EXTERIOR EIFS		
TYPE	REMARKS	
EF-01	INTEGRAL COLOR EIFS: STOTHEIM c/xps OR DRYVIT OUTSULATION PLUS EIFS SYSTEM COLOR: PT-69   MANUFACTURER: STO OR DRYVIT NOTES: FINE SAND FINISH   METAL COPING TO BE: MT-19	
EF-02	INTEGRAL COLOR EIFS: STOTHEIM c/xps OR DRYVIT OUTSULATION PLUS EIFS SYSTEM COLOR: PT-68   MANUFACTURER: STO OR DRYVIT NOTES: FINE SAND FINISH   METAL COPING TO BE: MT-19	
CONTACT: WGREENE@STOCORP.COM   WEBSITE: WWW.STOCORP.COM		
MASONRY		
TYPE	REMARKS	
ST-06	TUNDRABRICK STONE VENEER, COLOR: IRONSIDE	
ST-07	SPLIT-EDGE WAINSCOT SILL, COLOR: PEWTER	
CMU-1	8" BURNISHED CMU, AMCOM CONCRETE PRODUCTS LLC, 951 - ONYX	
EXTERIOR PAINT		
TYPE	COLOR NUMBER	PRODUCT NAME
PT-11	SW6076	SHERWIN WILLIAMS
PT-68	SW7600	SHERWIN WILLIAMS
PT-69	SW9108	SHERWIN WILLIAMS
ALUMINUM BRAKE METAL		
TYPE	REMARKS	
MT-19	METAL COPING COLOR: COPPER BROWN MANUFACTURER: BERRIDGE	
MT-20	CORRUGATED METAL PANEL COLOR: MANSARD BROWN MANUFACTURER/ITYP: PAC-CLAD, PAC HWC 16"24 GAGE	
STOREFRONT		
TYPE	REMARKS	
SF-01	STOREFRONT COLOR: MATCH SW6076 TURKISH COFFEE	
FIBER CEMENT SIDING		
TYPE	REMARKS	
CB-06	CEMENT BOARD SIDING COLOR: PRIMED FOR PAINTING, (PT-11) HARDIEPANEL SELECT CEDARMILL MANUFACTURER: JAMES HARDIE	
CB-07	FIBER CEMENT SIDING COLOR: ROUGH SAWN, ESPRESSO # AWP30-30 MANUFACTURER: NICHHA USA, INC CONTACT: (770) 805-9466	



**NOTE: ALL ROOFTOP EQUIPMENT IS SCREENED BY PROPOSED PARAPETS**



# SOUTH ELEVATION



ARCHITECTURAL GROUP INTERNATIONAL  
 17 WEST SEVENTH STREET  
 COVINGTON, KY 41011

**FIRST WATCH**  
 BREAKFAST • BRUNCH • LUNCH  
 INNOVATION RESTAURANT HUB  
 PORT ST. LUCIE, FL

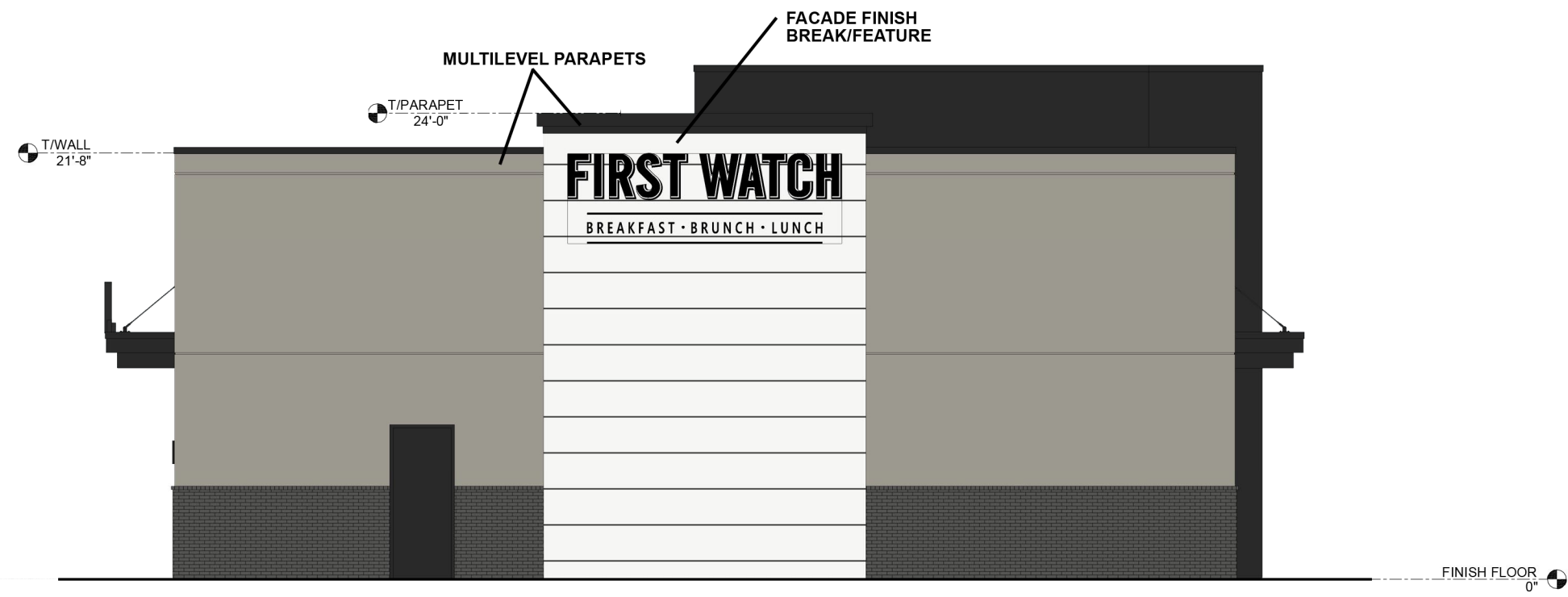


**EAST ELEVATION**

**FIRST WATCH**  
 BREAKFAST • BRUNCH • LUNCH  
 INNOVATION RESTAURANT HUB  
 PORT ST. LUCIE, FL



ARCHITECTURAL GROUP INTERNATIONAL  
 17 WEST SEVENTH STREET  
 COVINGTON, KY 41011



**WEST ELEVATION**

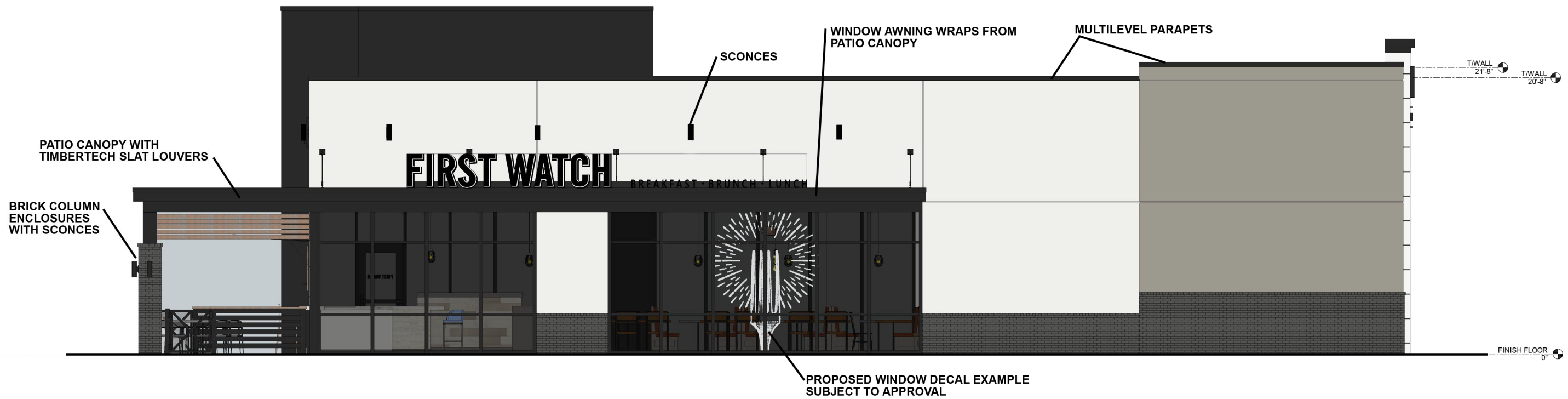


ARCHITECTURAL GROUP INTERNATIONAL  
 17 WEST SEVENTH STREET  
 COVINGTON, KY 41011

**FIRST WATCH**

**BREAKFAST • BRUNCH • LUNCH**  
 INNOVATION RESTAURANT HUB  
 PORT ST. LUCIE, FL





NORTH ELEVATION



ARCHITECTURAL GROUP INTERNATIONAL  
 17 WEST SEVENTH STREET  
 COVINGTON, KY 41011

**FIRST WATCH**

BREAKFAST • BRUNCH • LUNCH

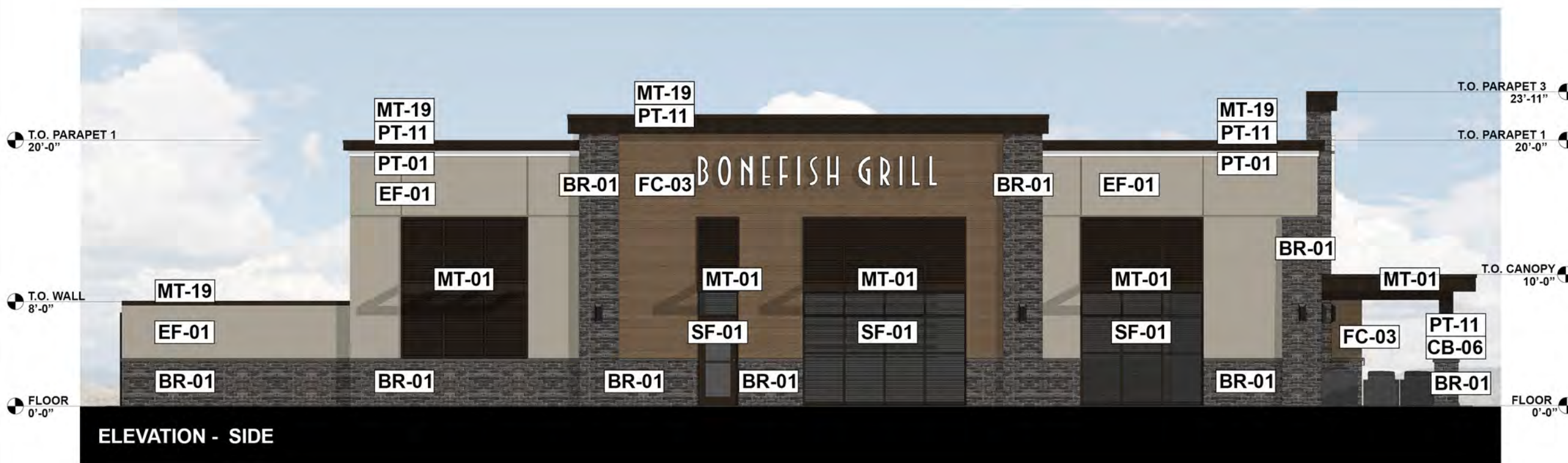
INNOVATION RESTAURANT HUB  
 PORT ST. LUCIE, FL



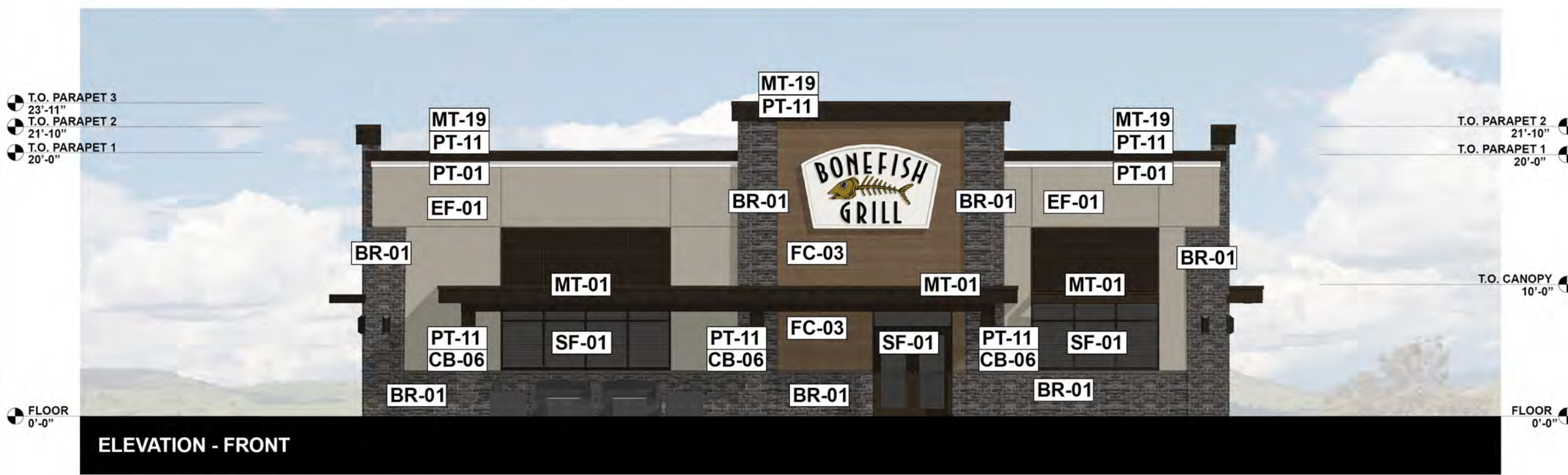
# ELEVATIONS

## EXTERIOR FINISH SCHEDULE

MASONRY		
TYPE	REMARKS	
BR-01	CULTURED STONE VENEER SYSTEM MANUFACTURER: ELDERADO STONE COLOR: TUNDRA IRONSIDE GROUT: LATIQUETE #90 DUSTY GREY, OR EQUAL PRE-CAST CONCRETE LEDGE CONTACT: SUSAN KING, (413) 207-7285, Susan.King@westlake.net	
EXTERIOR PAINT		
PT-01	COLOR NUMBER	BRAND
PT-01	PURE WHITE	SW 705
PT-02	ROCKPORT GRAY	HC 105
PT-11	BLACK EMERALD	SW 2536
		SHERWIN WILLIAMS
ALUMINUM BRAKE METAL		
MT-19	METAL COPING COLOR: MATTIE BLACK MANUFACTURER: BEBRIDGE	
MT-20	CORUGATED METAL PANEL, PAC HWC 19' 24 GA COLOR: MATTIE BLACK MANUFACTURER: PAC CLAD	
STOREFRONT		
SF-01	STOREFRONT COLOR: BLACK	
EIFS		
EF-01	EXTERIOR INSULATION AND FINISH SYSTEM DRYVIT OUTSULATION PLUS EIFS SYSTEM COLOR: PT-02 - SAND FINISH MANUFACTURER: DRYVIT	
	COPING TO BE: MT-19 CONTACT: UPDATE	
FIBER CEMENT SIDING		
CB-06	FIBER CEMENT SIDING COLOR: HARDEIPANEL SELECT CEDAR/MILL - PRIMED FOR PAINTING, REF: ELEVATIONS MANUFACTURER: NICHBA USA, INC CONTACT: (770) 855-9466	
FC-03	FIBER CEMENT SIDING COLOR: VINTAGE WOOD BARK MANUFACTURER: NICHBA USA, INC CONTACT: (770) 855-9466	



ELEVATION - SIDE



ELEVATION - FRONT

NOTE: ALL ROOFTOP EQUIPMENT IS SCREENED BY PROPOSED PARAPETS





# ELEVATIONS

## EXTERIOR FINISH SCHEDULE

MASONRY			
TYPE	REMARKS		
BR-01	CULTURED STONE VENEER SYSTEM MANUFACTURER: ELDERADO STONE COLOR: TUNDRA IRONSIDE GROUT: LATIQUETE #90 DUSTY GREY, OR EQUAL PRE-CAST CONCRETE LEDGE CONTACT: SUSAN KING, (413) 207-7285, Susan.King@westlake.net		
EXTERIOR PAINT			
TYPE	COLOR NUMBER	BRAND	
PT-01	PURE WHITE	SW 705	SHERWIN WILLIAMS
PT-02	ROCKPORT GRAY	HC 105	BENJAMIN MOORE
PT-11	BLACK EMERALD	SW 2536	SHERWIN WILLIAMS
ALUMINUM BRAKE METAL			
MT-19	METAL COPING COLOR: MATTIE BLACK MANUFACTURER: BEBRIDGE		
MT-20	CORUGATED METAL PANEL, PAC HWC 19' 24 GA COLOR: MATTIE BLACK MANUFACTURER: PAC CLAD		
STOREFRONT			
SF-01	STOREFRONT COLOR: BLACK		
EIFS			
EF-01	EXTERIOR INSULATION AND FINISH SYSTEM DRYVIT OUTSULATION PLUS EIFS SYSTEM COLOR: PT-02 - SAND FINISH MANUFACTURER: DRYVIT COPING TO BE: MT-19 CONTACT: UPDATE		
FIBER CEMENT SIDING			
CB-06	FIBER CEMENT SIDING COLOR: HARDEIPANEL SELECT CEDAR/MILL - PRIMED FOR PAINTING, REF: ELEVATIONS MANUFACTURER: NICHBA USA, INC CONTACT: (770) 855-9466		
FC-03	FIBER CEMENT SIDING COLOR: VINTAGE WOOD BARK MANUFACTURER: NICHBA USA, INC CONTACT: (770) 855-9466		



ELEVATION - SIDE



ELEVATION - REAR

NOTE: ALL ROOFTOP EQUIPMENT IS SCREENED BY PROPOSED PARAPETS