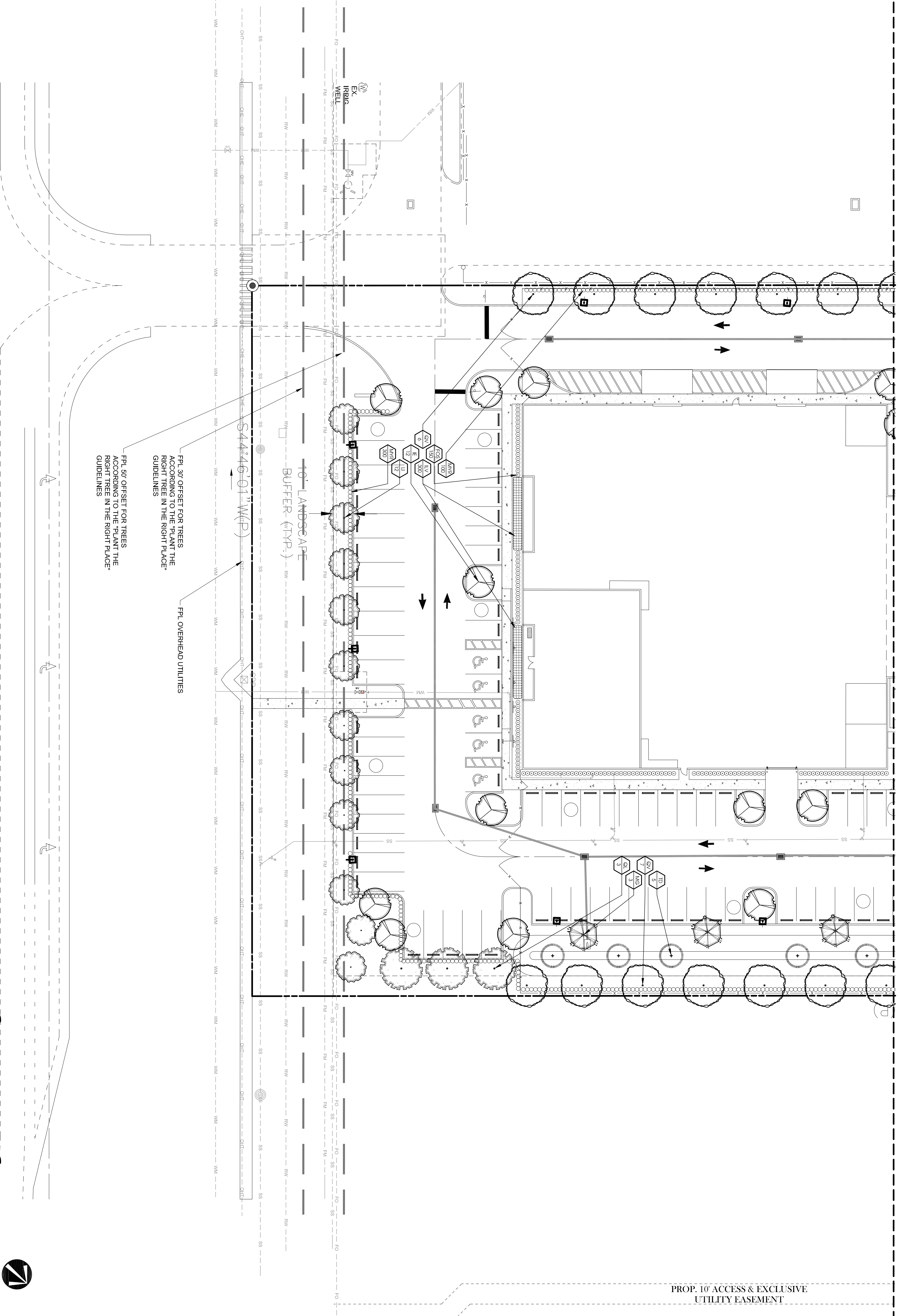


MATCH LINE - SEE SHEET L-2



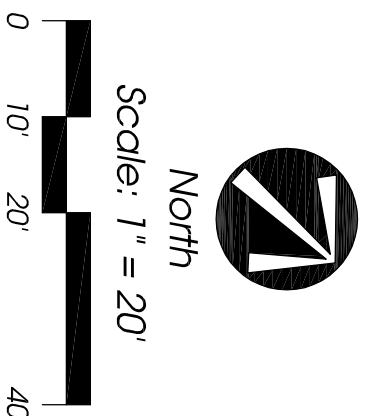
PPL 30' OFFSET FOR TREES ACCORDING TO THE "PLANT THE RIGHT TREE IN THE RIGHT PLACE" GUIDELINES

PPL 50' OFFSET FOR TREES ACCORDING TO THE "PLANT THE RIGHT TREE IN THE RIGHT PLACE" GUIDELINES

PPL OVERHEAD UTILITIES

PROP. 10' ACCESS & EXCLUSIVE UTILITY EASEMENT

# Landscape Plan

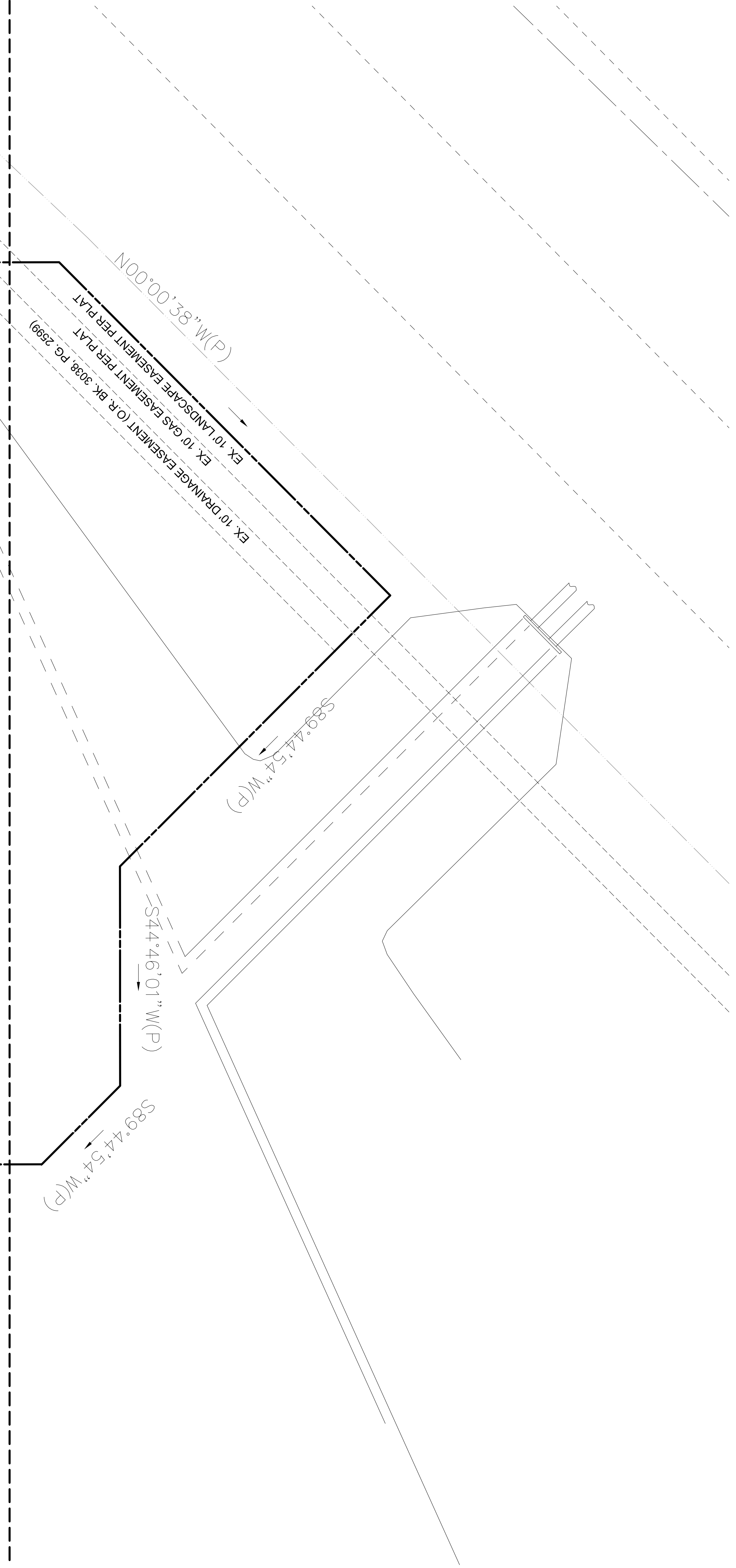


**Conceptual Design Group, Inc.**  
 Landscape Architecture - Site Planning  
 900 East Ocean Boulevard, Suite 1204  
 Stuart, Florida 34994  
 (772) 344-2340  
 LC 26000198

**Total Truck Parts**  
 Glades Cut Off Road (CR 709)  
 City of Port St. Lucie, Florida

|  |                        |
|--|------------------------|
| City Project Number:   |                        |
| Job No.  | 20-0806                |
| Drawn By   | JWS                    |
| Submitted Dates  | 8-27-2020<br>10-7-2020 |
| Revision Dates   |                        |
| #1 City Comments   | 10-7-2020              |
| Jeffrey W. Smith, RLA<br>Florida Registration Number<br>LA 0001035   |                        |
| <p>These drawings are the property of the landscape architect and are not to be used for other projects except by written permission from the landscape architect. The landscape architect's responsibility is to the landscape architect.</p> |                        |
| Sheet  | L-1 of 4               |





**Port St. Lucie Utility Systems Department Notes**

1. No landscaping shall be placed in such a manner as to adversely affect clearance of utility assemblies.
  2. Trees with a maximum height height greater than the height of the overhead power lines shall not be planted below overhead power lines. Small trees with a maximum mature height less than the height of the overhead power line shall be selected from Appendix C, Table 1, Type B Trees. No tree shall be planted within 10 feet of any existing utility pole, guy wire, or pad mounted transformer (See FPL's publication "Plant the Right Tree in the Right Place" for placement and maintenance requirements).
  3. All trees shall be planted in accordance with the City of Port St. Lucie's technical specifications, codes, and codes.
  4. Trees shall not be planted within ten (10) feet of any PS&US underground infrastructure.
  5. In locations where the perimeter landscape buffers must be designed to site constraints, the trees, palm trees and shrubs shall be selected from the list in PS&US (D) and shall meet the design and placement requirements. Trees and palm trees may be planted not less than seven (7) feet from the underground PS&US lines. The minimum clearance of the landscape buffer shall be placed in green on the ground cover.
1. The landscape plans meet the City's sight distance and clear zone requirements from Section 150.204 of the Code for 10' requirements.

**Port St. Lucie Engineering Department Notes**

**General Notes**

1. No permit substitutions can be made without the City of Port St. Lucie's approval.
2. All landscape improvements shall be inspected and approved by the City of Port St. Lucie prior to the issuance of a Certificate of Occupancy.
3. Any existing landscaping, sod, or irrigation damaged or destroyed during the construction shall be replaced prior to the final inspection.
4. All landscape sod to have a minimum clear radius of 7.5' as required by the NFPA Uniform Fire Code Florida Edition 18.3.4.1 Hydrants. All fire hydrants and fire check valves shall have a minimum of 7.5' from the front and sides with 4' from the rear to all landscape materials per the Florida Fire Prevention Code.

**Landscape Plan**

