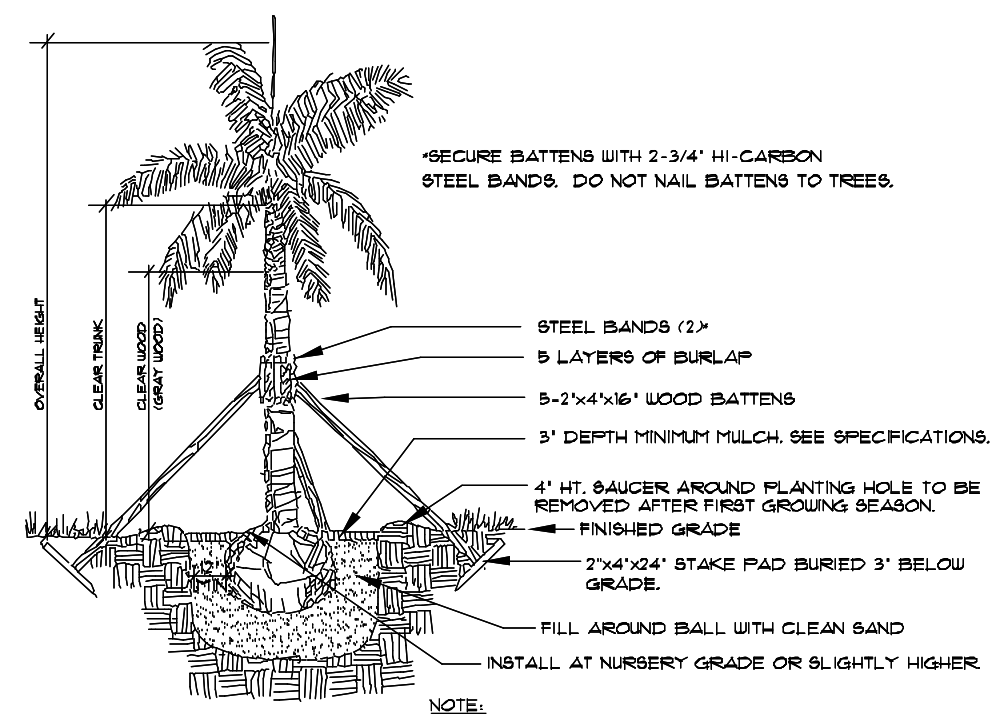
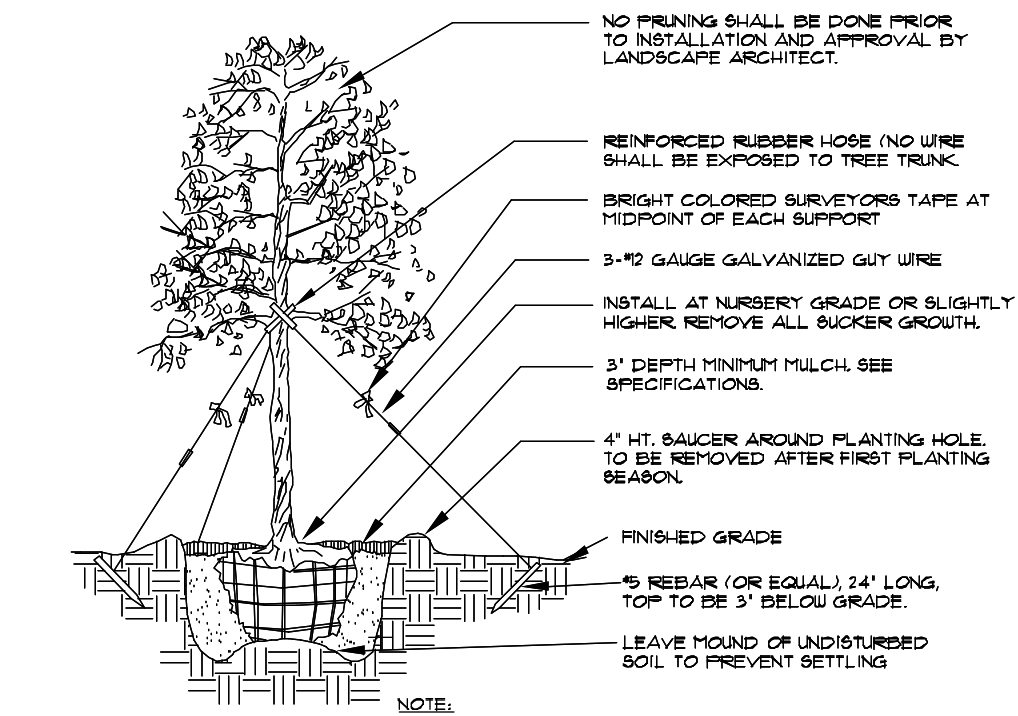


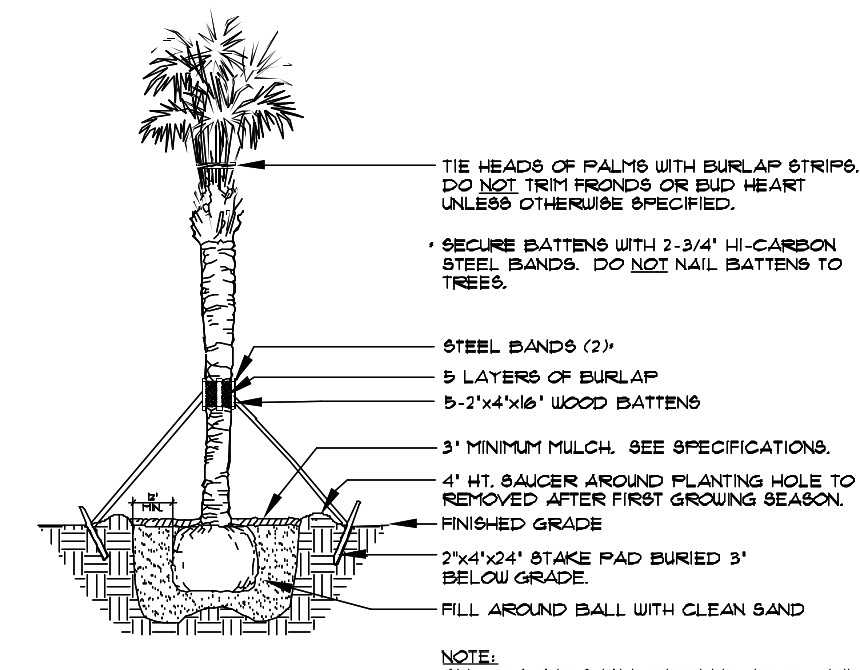
Planting Details



Tree Planting

• SEE SPECIFICATIONS FOR BACKFILL MIXTURE AND FERTILIZATION.

• BRACING - SPECIAL SITE CONDITIONS MAY REQUIRE MODIFICATION TO BRACING TECHNIQUE. LANDSCAPE CONTRACTOR WILL ADEQUATELY BRACE (OR WIRE) ALL TREES TO PREVENT EXCESSIVE MOVEMENT & MAINTAIN A VERTICAL POSITION.



Palm Planting

APPLIES TO: SERIAL PALMS, WASHINGTON PALMS, CANARY ISLAND DATE PALMS, BEJEGAL DATE PALMS.

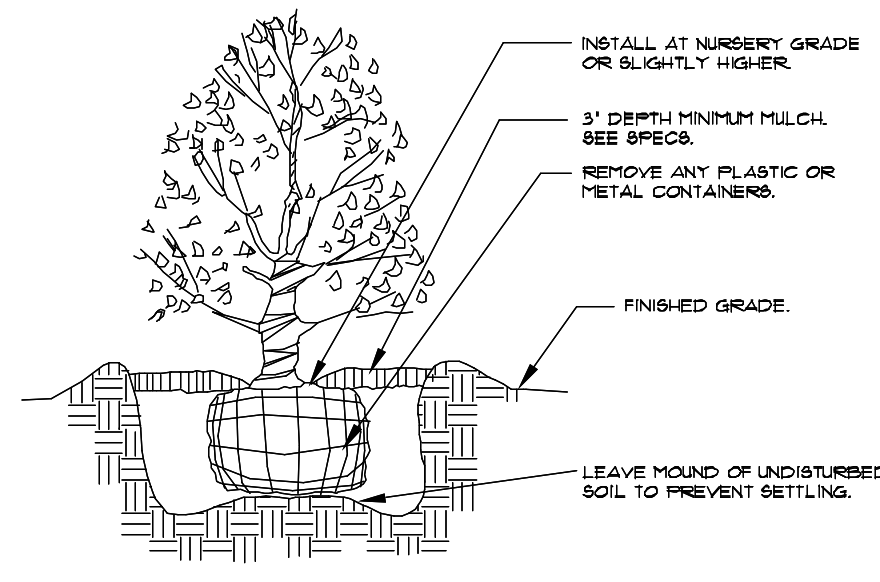
• SEE SPECIFICATIONS FOR BACKFILL MIXTURE AND FERTILIZATION.

Palm Planting

APPLIES TO: ROYAL PALMS, QUEEN PALMS, ALEXANDER PALMS, FOXTAIL PALMS.

• SEE SPECIFICATIONS FOR BACKFILL MIXTURE AND FERTILIZATION.

• BRACING - SPECIAL SITE CONDITIONS MAY REQUIRE MODIFICATION TO BRACING TECHNIQUE. LANDSCAPE CONTRACTOR WILL ADEQUATELY BRACE ALL PALMS TO PREVENT EXCESSIVE MOVEMENT & MAINTAIN A VERTICAL POSITION.

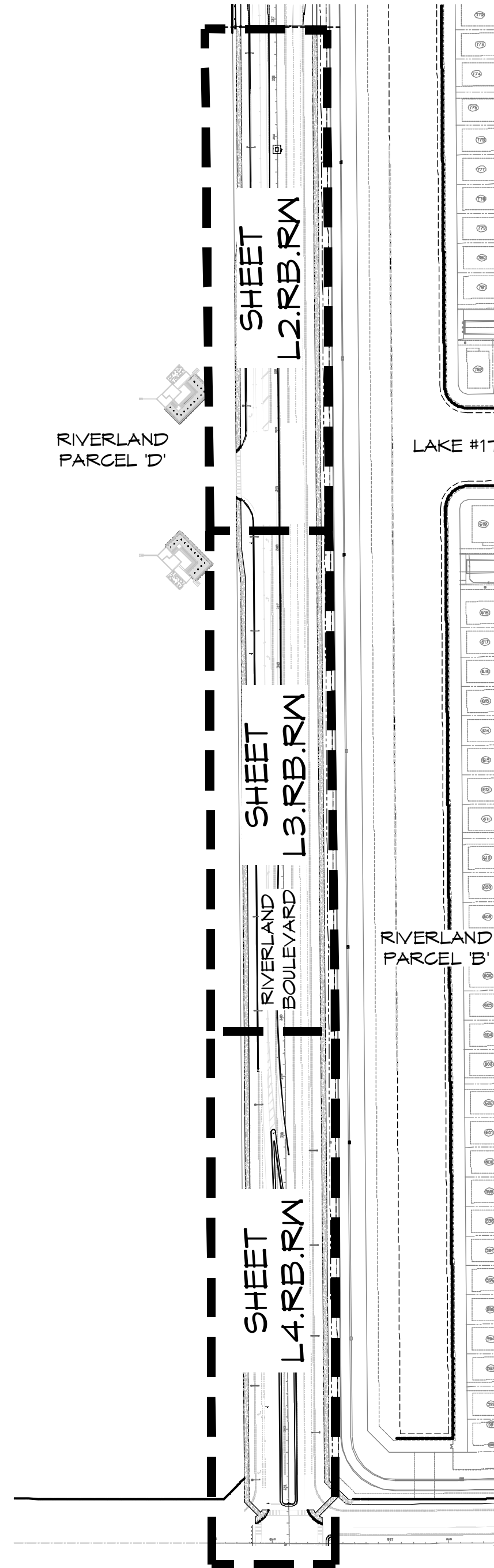


Shrub Planting

• SEE SPECIFICATIONS FOR BACKFILL MIXTURE AND FERTILIZATION.

RIVERLAND BOULEVARD AT RIVERLAND PARCEL 'D'

(RIVERLAND MPUD) PLANTING PLANS



General Notes

- ALL PLANT MATERIAL TO BE FLORIDA NO. 1 OR BETTER AND SHALL MEET OR EXCEED MINIMUM STANDARDS SET FORTH IN FLORIDA GRADES AND STANDARDS, CURRENT EDITION.
- A MINIMUM 50% OF ALL REQUIRED TREES (25% OF ALL SHRUBS) SHALL BE NATIVE SPECIES. A MAXIMUM OF 25% OF REQUIRED TREES MAY BE SUBSTITUTED WITH PALMS.
- TREES ARE TO BE INSTALLED WITH A TEN FOOT (10') MINIMUM SEPARATION FROM ANY UNDERGROUND PIPE (WATER, SEWER OR RECLAIM MAINS AND/OR SERVICES, HYDRANTS, LIFT STATIONS, AND DRAINAGE CULVERTS OR BASINS) IN NO CASE SHALL A TREE ENCR OACH INTO A PSLUSD WITHOUT PRIOR PSLUSD APPROVAL. ONLY 600 CAN BE INSTALLED WITHIN 5' OF A FIRE HYDRANT. SEE PSLUSD NOTES FOR ADDITIONAL INFORMATION.
- STREET TREES SHOWN HEREON ARE CONCEPTUAL IN NATURE AND MAY BE FIELD ADJUSTED TO MAINTAIN PROPER CLEARANCE FROM REQUIRED IMPROVEMENTS INCLUDING DRIVEWAYS. TREES TO BE INSTALLED WITH A MINIMUM TEN FOOT (10') SEPARATION FROM ANY UNDERGROUND UTILITY UNLESS OTHERWISE APPROVED.
- PER PSL CODE OF ORDINANCES SECTION 158.204, PLANTING LOCATED WITHIN THE 20' SAFE SIGHT TRIANGLE AT INTERSECTIONS (OR TEN (10) FEET FROM THE EDGE OF A DRIVEWAY OR ALLEY) MUST MAINTAIN A CLEAR ZONE BETWEEN TWO (2) AND SIX (6) FEET FROM THE CROWN OF ROAD.
- REGULAR MAINTENANCE SHALL PERFORMED ON ALL ROYAL PALMS AND COCONUT PALMS AS SHOWN HEREON TO A LEVEL THAT SIGNIFICANTLY REDUCES THE LIKELIHOOD OF ANY INDIVIDUAL OR COLLECTIVE PARTS WHICH MAY CAUSE INJURY OR DAMAGE FROM FALLING INTO A ROAD RIGHT-OF-WAY OR ONTO ANY PEDESTRIAN OR VEHICLE USE AREA.
- ALL LANDSCAPED AREAS REQUIRING IRRIGATION SHALL BE PROVIDED WITH A FULLY AUTOMATED IRRIGATION SYSTEM THAT PROVIDES 100 PERCENT COVERAGE WITH 100 PERCENT OVERLAP WITH A MINIMUM DESIGN DISTRIBUTION UNIFORMITY (DU) OF .70.
- ATTENTION LANDSCAPE CONTRACTOR: TREES PLANTED IN LOCATIONS OTHER THAN THOSE SHOWN MAY INTERFERE WITH UNDERGROUND PIPE - BEFORE CHANGING LOCATIONS, VERIFY UNDERGROUND AND PROVIDE ROOT-BARRIER AS SPECIFIED ON DETAILS SHEET OR ELIMINATE TREE AS DEEMED NECESSARY. CONFLICTS REQUIRING DEVIATION FROM PLANS MUST BE BROUGHT TO THE ATTENTION OF THE LANDSCAPE ARCHITECT OF RECORD.
- QUANTITIES ON PLANT LIST ARE FOR CONVENIENCE ONLY. THE LANDSCAPE CONTRACTOR IS RESPONSIBLE FOR ALL PLANTS SHOWN ON PLANTING PLANS. WHEN DISCREPANCIES OCCUR BETWEEN PLANT LIST AND PLANTING PLANS, THE PLANS ARE TO OVERRIDE THE PLANT LIST IN ALL CASES.
- ALL LANDSCAPING SHALL BE KEPT IN A HEALTHY GROWING CONDITION AT ALL TIMES.

THE LOCATIONS OF TREES AS SHOWN ON THESE PLANS ARE APPROXIMATE. THE FINAL LOCATIONS MAY BE FIELD ADJUSTED TO ACCOMMODATE UNFORSEEN FIELD CONDITIONS TO COMPLY WITH SAFETY SETBACKS, AVOID UTILITIES, OR AS OTHERWISE DIRECTED OR APPROVED BY THE LANDSCAPE ARCHITECT. THE CONTRACTOR SHALL FLAG ALL TREE LOCATIONS FOR THE APPROVAL OF THE LANDSCAPE ARCHITECT PRIOR TO PLANTING.

PSLUSD Notes:

LANDSCAPE PLANS SHALL BE SUBMITTED FOR THE PROJECT INDICATING THE LOCATION OF LANDSCAPE AREAS, PERMETER WALLS, FOUNDATIONS, BERTHS, TREE WELLS, FENCES, GATES, SIGNS, DECORATIVE ROCKS, SCULPTURE, FOUNTAINS, AND ANY OTHER FEATURES THAT MAY INFLUENCE THE LOCATION OF WATER / WASTEWATER / RECLAIMED WATER FACILITIES. ALSO, EXISTING AND PROPOSED WATER / WASTEWATER / RECLAIMED FACILITIES, AND RIGHT-OF-WAY, LOT LINES AND ALL EASEMENT INFORMATION, SHOWING OFFICIAL RECORD BOOK AND PAGE NUMBER SHALL BE INCLUDED. THE PLANS SHALL INCLUDE AND CONFIRM TO THE FOLLOWING STANDARD NOTES:

- NO LANDSCAPING SHALL BE PLANTED IN A MANNER THAT WOULD ADVERSELY AFFECT UTILITY EASEMENTS. LANDSCAPING SHALL BE IN COMPLIANCE WITH CHAPTER 154 OF THE CITY OF PORT ST. LUCIE CODE OF ORDINANCES, PSLUSD TECHNICAL SPECIFICATIONS AND POLICIES.
- ALL LANDSCAPING WITHIN CITY UTILITY EASEMENTS SHALL COMPLY WITH PSLUSD TECHNICAL SPECIFICATIONS, POLICIES, AND CODES.
- ALL LANDSCAPING SHALL MEET THE LATEST PSLUSD LANDSCAPE POLICY AND SHALL NOT BE PLACED IN A MANNER THAT WOULD CREATE CONFLICTS WITH THE INTENDED OPERATION AND MAINTENANCE OF ANY EXISTING UTILITY.
- TREES SHALL NOT BE PLANTED WITHIN TEN (10) FEET OF ANY PSLUSD UNDERGROUND INFRASTRUCTURE. WITH THE EXCEPTION OF FOXTAIL PALMS, TREES SHALL NOT BE PLANTED WITHIN 10' OF ANY PSLUSD INFRASTRUCTURE. AS SPECIFICALLY APPROVED BY THE PSLUSD, FOXTAIL PALMS MAY BE A DISTANCE NOT LESS THAN SEVEN (7) FEET OF ANY PSLUSD INFRASTRUCTURE. ALL MEASUREMENTS ARE FROM OUTSIDE TO OUTSIDE, NOT CENTERLINE TO CENTERLINE. EXAMPLE: OUTSIDE OF PIPE TO NEAREST POINT ON TREE TRUNK.
- NO LANDSCAPING OTHER THAN 600 GRASSES SHALL BE LOCATED WITHIN 5' OF A PSLUSD APPURTENANCE SUCH AS A WATER METER ASSEMBLY, BACK-FLOW DEVICE, FIRE HYDRANT OR SEWER CLEANOUT, ETC.

Plant Specifications

SPECIES AND SIZE shall conform to those indicated on the drawings. Nomenclature shall conform to STANDARDIZED PLANT NAMES, current edition. All nursery stock shall be in accordance with Florida Grades and Standards for Nursery Plants, latest edition published by the Florida Department of Agriculture and Consumer Services. All plants not otherwise specified as being Florida Fancy or Specimen shall be Florida Grade Number 1 or better as determined by the Florida Division of Plant Industry. Specimen means an exceptionally heavy, symmetrical, tightly knit plant, so trained or favored in its development that first appearance is unquestionable and outstandingly superior in form, number of branches, compactness and symmetry.

GENERAL REQUIREMENTS

All plants shall be freshly dug, sound, healthy, vigorous, well branched, and free of disease and insect eggs and larvae, and shall have adequate root systems. Trees for planting rows shall be uniform in size and shape. All materials shall be subject to approval by the Landscape Architect. Where any requirements are omitted from the plant list, the plants furnished shall be normal for the variety. Plants shall be pruned prior to delivery only upon the approval of the Landscape Architect.

CONTAINER GROWN STOCK

All container grown material shall be healthy, vigorous, well rooted plants, and established in the container in which they are sold. The plants shall have tops which are good quality and in a healthy growing condition. An established container grown plant shall be grown in that container sufficiently long enough for the new fibrous roots to have developed so that the root mass will retain its shape and hold together when removed from the container. Plant root bound in containers are unacceptable.

MEASUREMENTS

Trees: Height shall be measured from ground to the top most portion of the tree. Small, multi-trunked trees are measured to the top of main body of the crown. Spread shall be measured to the end of branching equally around the crown from the center of the trunk. Measurements are not to include any terminal growth. Single trunk trees shall be free of "Y" crotches that could be points of weak, thin structure or disease invasion.

Shrubs: Height shall be measured from the ground to the average points where mature plant growth stops. Spread shall be measured to the end of branching equally around the shrub mass. Measurements are not to include any terminal growth.

Palms: Clear Trunk (C.T.) shall be measured from the ground at the time of installation to the point where the mature aged trunk joins the immature or green portion of the trunk or the head.

Overall height (O.H.) shall be measured from the ground at the time of installation to a point three quarters the length of the unopened bud. Palms with nipped or burned trunks will not be accepted.

SOIL

Planting soil for use in preparing backfill for plant pits shall be free from heavy clay, stones, lime, plants, roots or other foreign materials or noxious grasses (such as Bermuda or nut grass) and noxious weeds. It shall not contain toxic substances which may be harmful to plant growth.

COMMERCIAL FERTILIZER

Two fertilizers shall be used in all types of plantings, except palms. Granular fertilizer shall be uniform in composition, dry and free flowing. This fertilizer shall be delivered to the site in its original unopened bags, each bearing the manufacturer's statement of analysis, and shall meet the following requirements: sixteen (16%) percent nitrogen, seven (7%) percent phosphorus, twelve (12%) percent potassium, plus iron. Tablet fertilizer ("Agriform" or equal) in 21 gram size shall meet the following requirements: twenty (20%) percent nitrogen, ten (10%) percent phosphorus, five (5%) percent potassium.

The two fertilizers will be applied at the following rates:

PLANT SIZE	16-1-12	"AGRIFORM" TABLET (21 Grams)
1 gal.	1/4 lb.	1
3 gal.	1/3 lb.	2
7-15 gal.	1/2 lb.	4
1"-6" caliper	2 lbs./1" caliper	2 1/2" caliper
6" and larger	3 lbs./1" caliper	2 1/2" caliper

"Florida East Coast Palm Special" will be applied to all palms at installation at a rate of 1/2 lb. per inch of trunk caliper unless otherwise specified.

MULCH

Mulch material shall be three (3) inches of shredded Class 'A' mulch (sterilized and free of seeds), moistened at the time of application to prevent wind displacement. See plant list for specification.

SUBSTITUTIONS

No substitutions of plant material types or size will be allowed without written consent of the Landscape Architect. B&B material will not be accepted as substitute for container grown material unless previously approved. Alternate substitutions shall be indicated in bid.

Symbols Legend

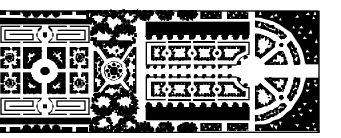
D.E.	DRAINAGE EASEMENT	O.E.	OVERHANG EASEMENT
L.M.E.	LAKE MAINTENANCE EASEMENT	G.E.	GRADING EASEMENT
L.M.A.E.	LAKE MAINTENANCE ACCESS EASEMENT	PSL	PORT ST LUCIE
R.O.W.	RIGHT OF WAY	L.E.	LANDSCAPE EASEMENT
U.E.	UTILITY EASEMENT	D.S.E.	DRAINAGE SWALE EASEMENT
U.E.-R.A.	UTILITY EASEMENT - RESTRICTED AREA (SEE "U.E." PLAT DEDICATION)	O.S.	OPEN SPACE
STM	STORM SEWER LINE WITH MANHOLE	S&M	SEED & MULCH
STM	STORM SEWER LINE WITH CATCH BASIN		
SAN	SANITARY SEWER LINE WITH MANHOLE	○	SIGN
WM	WATER MAIN	①	LOT NUMBER
FM	FORCE MAIN	+	FIRE HYDRANT
	WATER SVC. TO LOT WITH METER W.M.	+	STREET LIGHT
	SANITARY SVC. TO LOT WITH CLEANOUT C.O.		

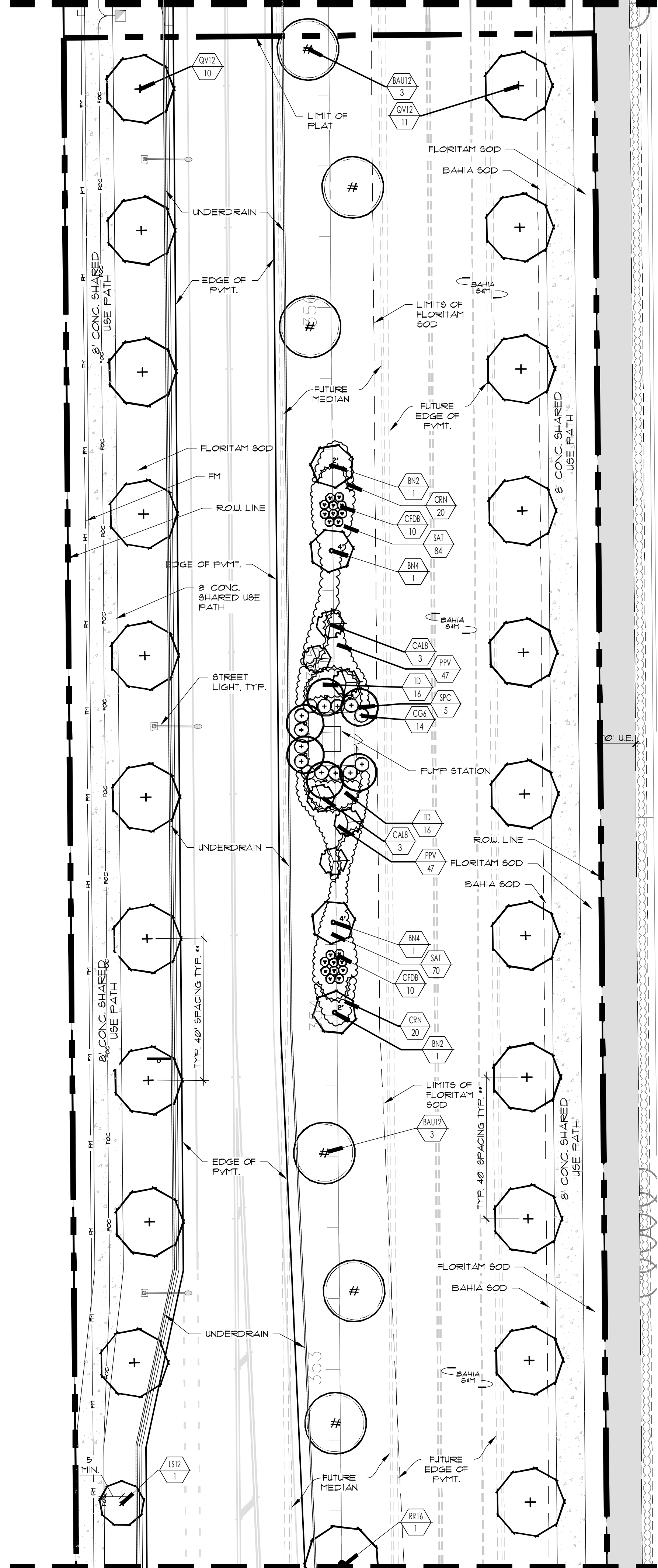
RIVERLAND BLVD AT PARCEL D DATA TABLE

	Trees Required	Palms Allowed (25%)	Palms Provided	Shade Trees Provided	Total Trees/Palms Provided	Native Trees Required (50%)	Native Trees Provided
COMMUNITY BLVD AT PARCEL D - TREES	88.4 (1)	22	58	133	155 (2)	44.2	109 (123%)

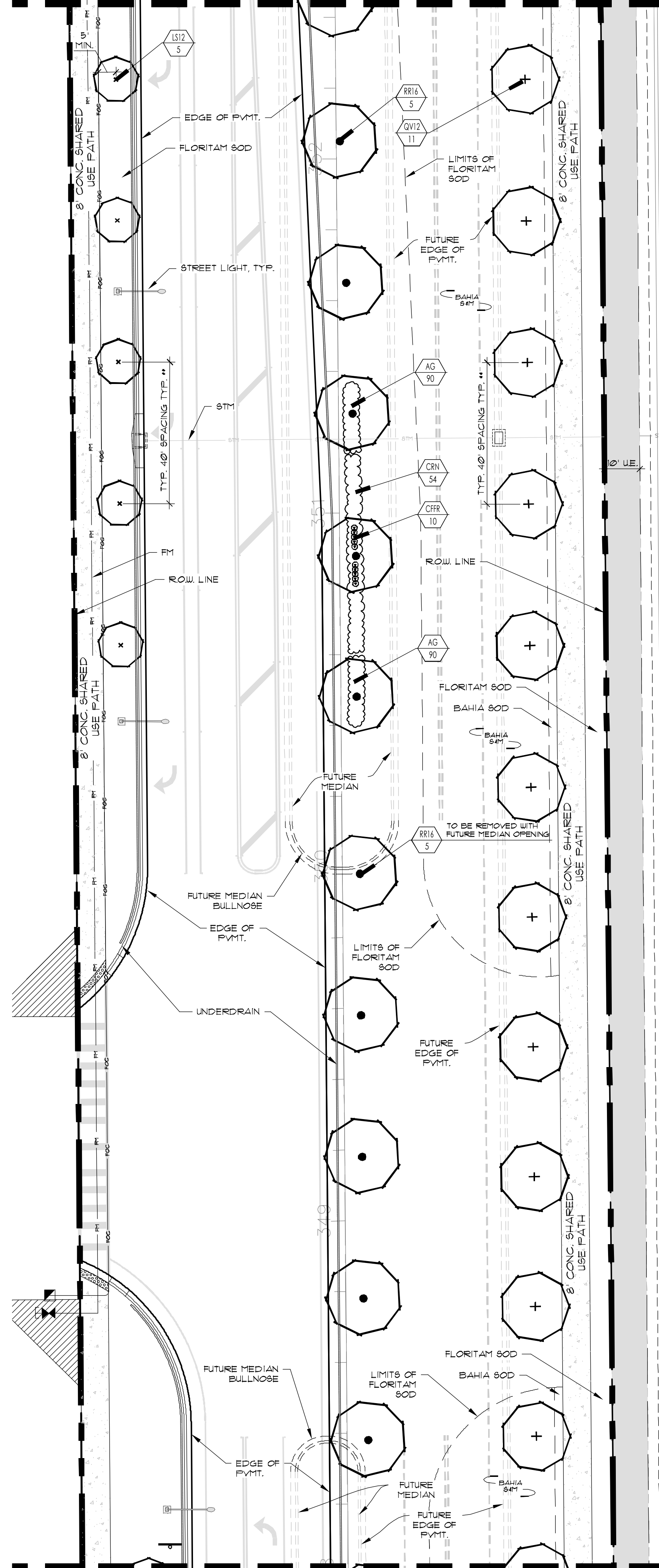
(1) 2575 LF OF ROADWAY WITH LARGE TREES (AVG SPACING AT 60' O.C.) = 42.9 TREES
 1084 LF OF ROADWAY WITH MEDIUM TREES (AVG SPACING AT 50' O.C.) = 21.6 TREES
 957 LF OF ROADWAY WITH SMALL TREES/PALMS (AVG SPACING AT 40' O.C.) = 23.9 TREES
 42.9 TREES + 21.6 + 23.9 TREES = **88.4 TREES REQUIRED**
 BALANCE OF ROADWAY IS NOT PLANTABLE SPACE DUE TO INTERSECTIONS, TURN LANES, AND FUTURE MEDIAN OPENINGS.

(2) TOTAL TREES / PALMS PROVIDED: 133 SHADE TREES PROVIDED + 22 PALMS ALLOWED (25%) = **155 TOTAL TREES/PALMS PROVIDED**.
 36 ADDITIONAL PALMS WERE PROVIDED IN EXCESS OF THE 25% ALLOWED BY CODE AND WERE NOT USED TO MEET THE TOTAL NUMBER OF TREES REQUIRED.





MATCH LINE 'A' - SEE ABOVE RIGHT



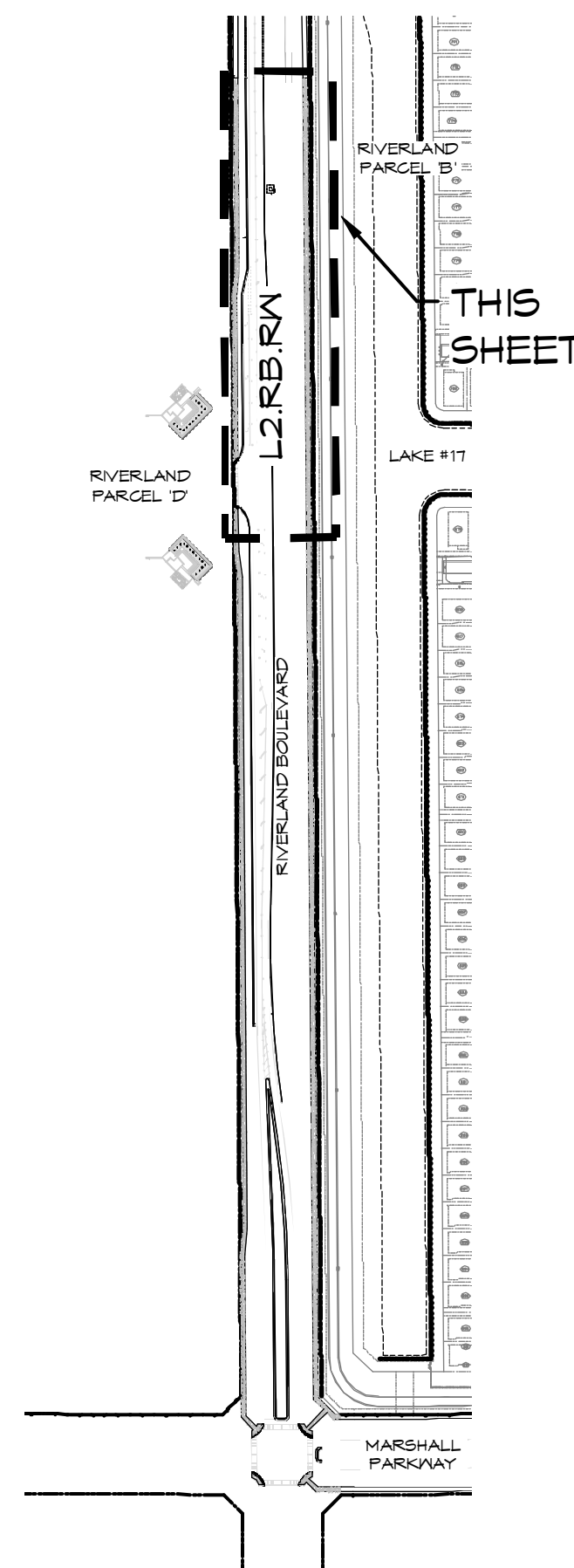
MATCH LINE 'B' - SEE SHEET L3.RB.RW

PLANT LIST - SHEET L2.RB.RW

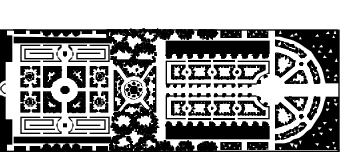
SYMBOL	BOTANICAL / COMMON NAME	SPECIFICATION	QTY
TREES			
BAU12	Baobab baobab / Hong Kong Orchid	12' x 6', 25' cal., 25 gal., full canopy	6
CA18	Calliandra haematocephala / Powder Puff	8' ht., 15 gal., full canopy	6
LS12	Lagerstroemia speciosa / Queen's Grape Myrtle	12' ht., 25' cal., 25 gal., full canopy	6
QV12	Quercus virginiana / Live Oak	12' x 6', 25' cal., 25 gal., full canopy	52
PALMS			
BN2	Bismarckia nobilis / Bismarck Palm	1-2 c.t., heavy cal., full frond	2
BN4	Bismarckia nobilis 'Silver' / Silver Bismarck Palm	4 c.t., heavy cal., full frond	2
RR16	Royaltonia regia / Royal Palm	16' gw., heavy cal., full frond	11
SPC	Sabal palmetto / Cabbage Palm	6' - 22' c.t. hts., staggered hts., hurricane cut, slick trunk, curved as noted on plan	5
SHRUBS, ACCENTS, AND GROUNDCOVER			
AG	Arachis glabrata / Perennial Peanut	Solid panels, laid tight, Qty in SF	180
CFDB	Cordyline fruticosa Dr. Brown / TI Plant	7 gal., 22" x 28", full	20
CFPR	Cordyline fruticosa 'Patricia Red' / TI Plant	9 gal., 22" x 18", full	10
CGE	Clusia gutierrezii / Small Leaf Clusia	25 gal., 8' x 4', full to base, dense	14
CRN	Clusia rosea 'Huer' / Dwarf Peach Apple	3 gal., 14" x 18", full, 18" o.c.	44
PPV	Pennisetum purpurum 'Vertigo'	3 gal., 20" x 14", full	44
SAT	Schefflera arboricola 'Trinette' / Variegated Dwarf Schefflera	3 gal., 22" x 20", full	154
TD	Tripsacum dactyloides / Fakahatchee Grass	3 gal., 24" x 22", full, 20" o.c.	32
SOD	Stenotaphrum secundatum / St. Augustine Floritiam	Solid sod, laid tight, Qty in SF	
BAHIA SOD	Paspalum notatum / Bahia Grass	Solid sod, laid tight, Qty in SF	
MULCH	Chocolate Mulch	2" Thick 'A' Grade Raw Wood Mulch, CHOCOLATE color - BID PER CY	

NOTE:
 -ALL PLANT MATERIAL SHALL MEET OR EXCEED SIZE AND CONTAINER SPECIFICATIONS IN PLANT LIST. PLANT MATERIALS NOT MEETING SPECIFICATION WILL BE REJECTED. CONTRACTOR TO COORDINATE AVAILABILITY ISSUES WITH OWNER PRIOR TO COMMENCING WORK.
 -ALL TREE BRACING TO BE REMOVED BY THE CONTRACTOR AT THE CONCLUSION OF THE WARRANTY.
 ** TREES SPACED AT 40' O.C. TYPICAL, 50' MAXIMUM IN THE EVENT OF INFRASTRUCTURE CONFLICT.

SHEET KEY



10' 0" 20'
 PSL PROJECT NO. F22-210
 PSLUSD PROJECT NO. 5268-1



PARKER-YANNETTE
 design group, inc.

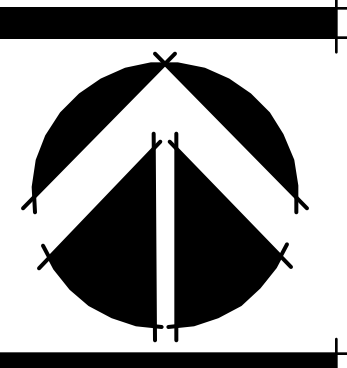
LANDSCAPE ARCHITECTURE
 PLANNING • GRAPHICS
 4425 Military Trail, Suite 202
 Jupiter, Florida 33458

Telephone: (561) 747-5069
 Fax: (561) 747-2041
 Email: mail@pydgc.com
 License #LA-0001347

**RIVERLAND BOULEVARD AT
 RIVERLAND PARCEL D**
 PORT ST. LUCIE, FLORIDA
 R.O.W. PLANTING PLAN

DATE: 7.6.22
 DRAWN BY: ALJ/MAY
 JOB NO.: 17-071
 SCALE: 1" = 20'-0"
 FILENAME: Rv MH0A

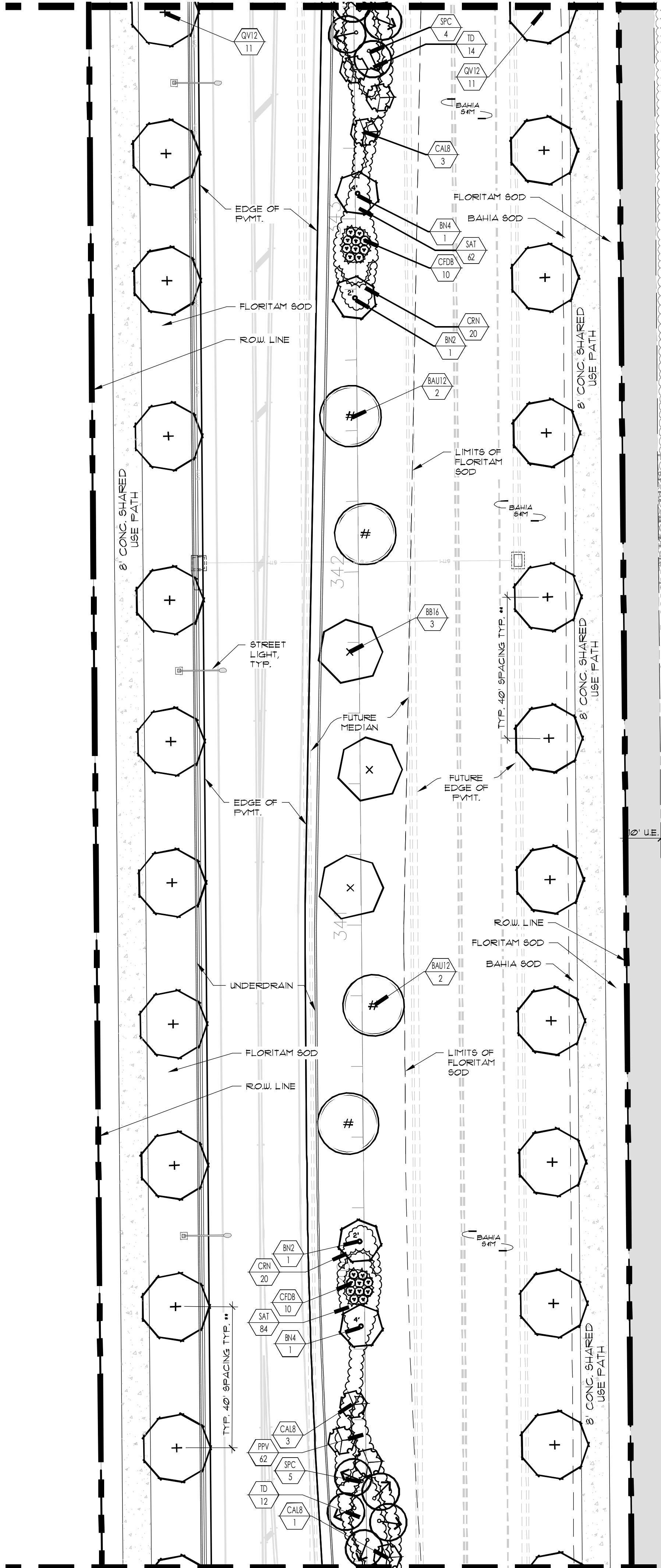
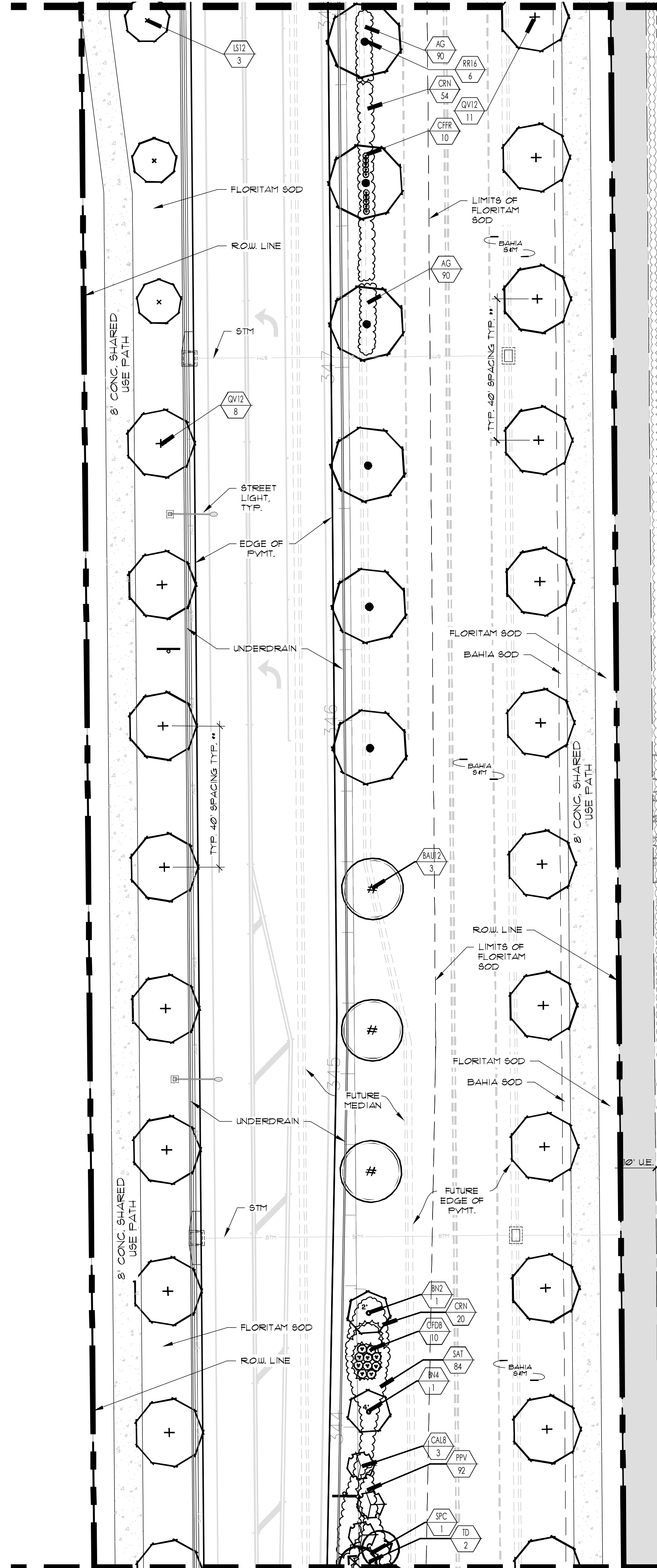
REVISIONS:
 2.10.23 Resubmittal
 2.25.23 Add Irr pump stn.
 3.24.23 PSL cmts
 3.30.23 PSL cmts



SHEET:
L2.RB.RW

MATCH LINE 'B' - SEE SHEET L2.RB.RW

MATCH LINE 'C' - SEE BELOW LEFT

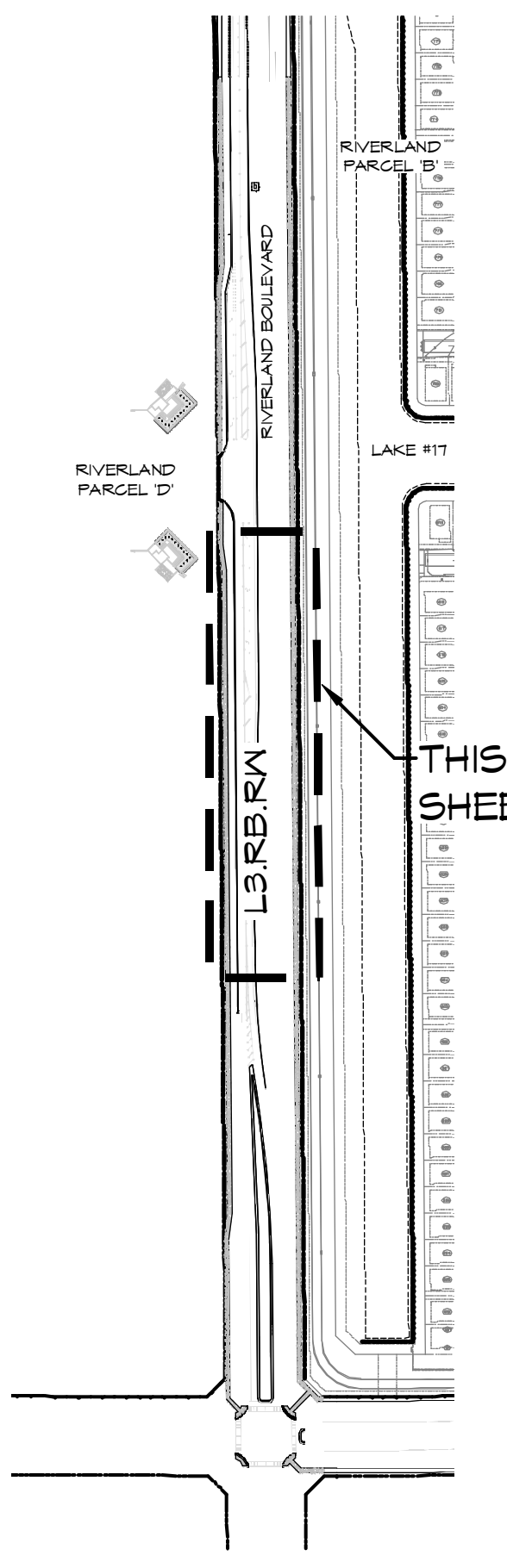


PLANT LIST - SHEET L3.RB.RW

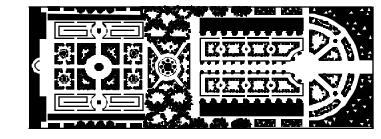
SYMBOL	BOTANICAL / COMMON NAME	SPECIFICATION	QTY
TREES			
BAU12	Bauhinia blakeana / Hong Kong Orchid	12" x 6", 2.5' cal., 25 gal., full canopy	7
BB16	Bucida buceras / Shady Lady / Black Olive	16" ht. x 8" spr., 3' cal., 45 gal., full canopy, B # B	3
CAL3	Calliandra naematocarpa / Powder Puff	8" ht., 15 gal., full canopy	10
LS12	Lagerstroemia speciosa / Queen's Grape Myrtle	12" ht., 2.5' cal., 25 gal., full canopy	3
QV12	Quercus virginiana / Live Oak	12" x 6", 2.5' cal., 25 gal., full canopy	41
PALMS			
BN2	Bismarckia nobilis / Bismarck Palm	1'-2' c.t., heavy cal., full frond	3
BN4	Bismarckia nobilis 'Silver' / Silver Bismarck Palm	4' c.t., heavy cal., full frond	3
RR16	Royaltonia regia / Royal Palm	16' gw., heavy cal., full frond	6
SPC	Sabal palmetto / Cabbage Palm	6' - 22' c.t. ht., staggered hts., hurricane cut, slick trunk, curved as noted on plan	10
SHRUBS, ACCENTS, AND GROUNDCOVER			
AG	Arachis glabrata / Perennial Peanut	Solid panels, laid tight, Qty in SF	160
CFDB	Cordyline fruticosa Dr. Brown / TI Plant	7 gal., 32" x 28", full	30
CFPR	Cordyline fruticosa 'Fairchild Red' / TI Plant	5 gal., 22" x 18", full	10
CRN	Cusia rosea 'Nana' / Dwarf Poin Apple	5 gal., 14" x 18", full, 18" o.c.	114
PPV	Persea purpurascens 'Vertigo'	5 gal., 22" x 14", full	154
SAT	Schefflera arboricola 'Tricolor' / Variegated Dwarf Schefflera	5 gal., 22" x 20", full	230
TD	Tripsacum dactyloides / Fackelblüten Grass	5 gal., 24" x 22", full, 30" o.c.	28
SOD	Stenotaphrum secundatum / St. Augustine Floritiam	Solid sod, laid tight, Qty in SF	
BAHIA SOD	Paspalum notatum / Bahia Grass	Solid sod, laid tight, Qty in SF	
MULCH	Chocolate Mulch	2" Thick 'A' Grade Raw Wood Mulch, CHOCOLATE color - BID PER CY	

NOTE:
 -ALL PLANT MATERIAL SHALL MEET OR EXCEED SIZE AND CONTAINER SPECIFICATIONS IN PLANT LIST. PLANT MATERIALS NOT MEETING SPECIFICATION WILL BE REJECTED. CONTRACTOR TO COORDINATE AVAILABILITY ISSUES WITH OWNER PRIOR TO COMMENCING WORK.
 -ALL TREE BRACING TO BE REMOVED BY THE CONTRACTOR AT THE CONCLUSION OF THE WARRANTY.
 ** TREES SPACED AT 40' O.C. TYPICAL, 50' MAXIMUM IN THE EVENT OF INFRASTRUCTURE CONFLICT.

SHEET KEY



10' 0 20'
 PSL PROJECT NO. F22-210
 PSLUSD PROJECT NO. 5268-1



PARKER-YANNETTE
 design group, inc.

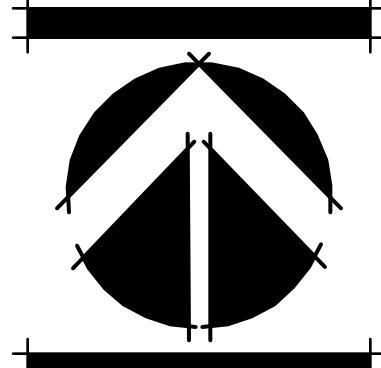
LANDSCAPE ARCHITECTURE
 PLANNING • GRAPHICS
 4425 Military Trail, Suite 202
 Suite 330
 Jupiter, Florida 33458

Telephone: (561) 747-5069
 Fax: (561) 747-2041
 Email: mail@pydg.com
 License #LA-0001347

**RIVERLAND BOULEVARD AT
 RIVERLAND PARCEL D
 PORT ST. LUCIE, FLORIDA
 R.O.W. PLANTING PLAN**

DATE: 7.6.22
 DRAWN BY: ALO/MAY
 JOB NO.: 17-071
 SCALE: 1" = 20'-0"
 FILENAME: Rv MHGA

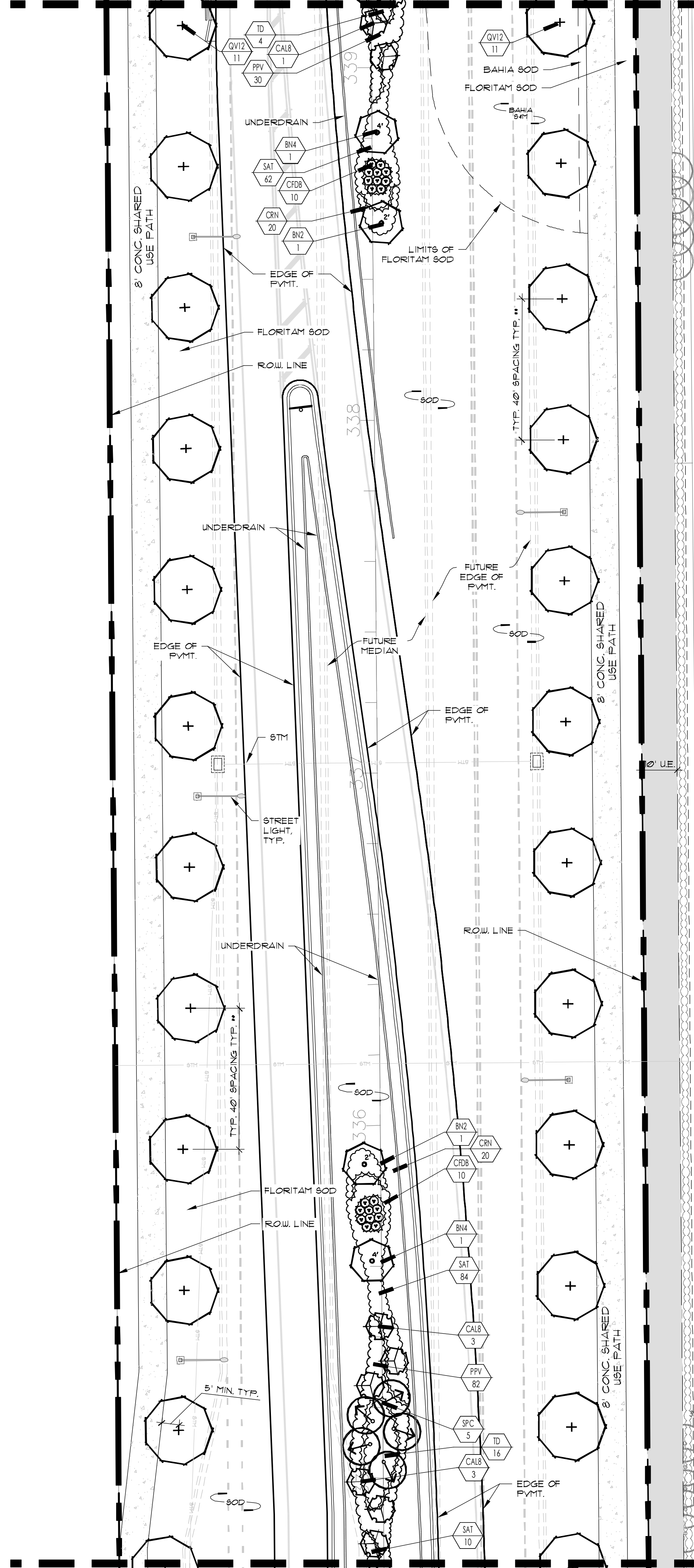
REVISIONS:
 2.10.23 Resubmittal
 2.23.23 Add Irr pump stn.
 3.24.23 PSL cmnts
 3.30.23 PSL cmnts



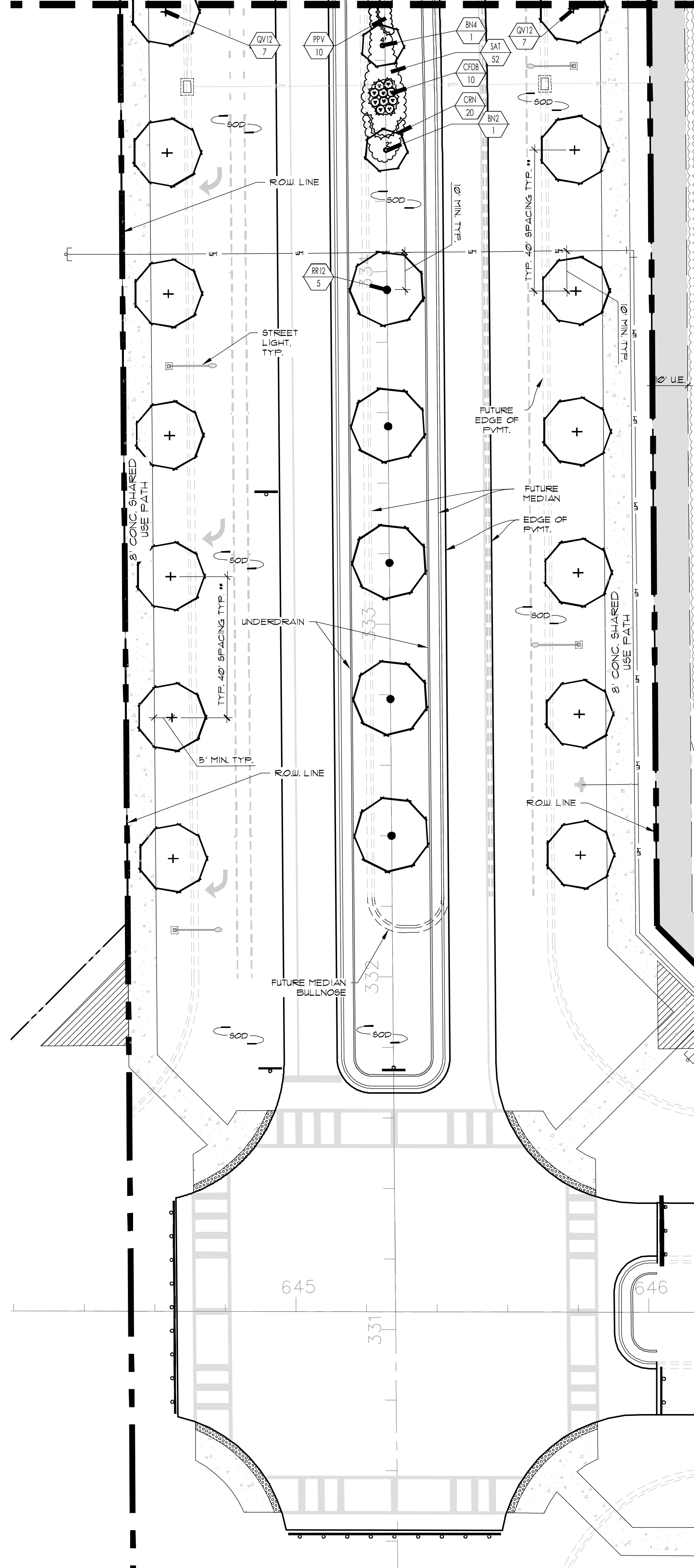
SHEET:
L3.RB.RW

MATCH LINE 'D' - SEE SHEET L3.RB.RW

MATCH LINE 'E' - SEE BELOW LEFT



MATCH LINE 'E' - SEE ABOVE RIGHT

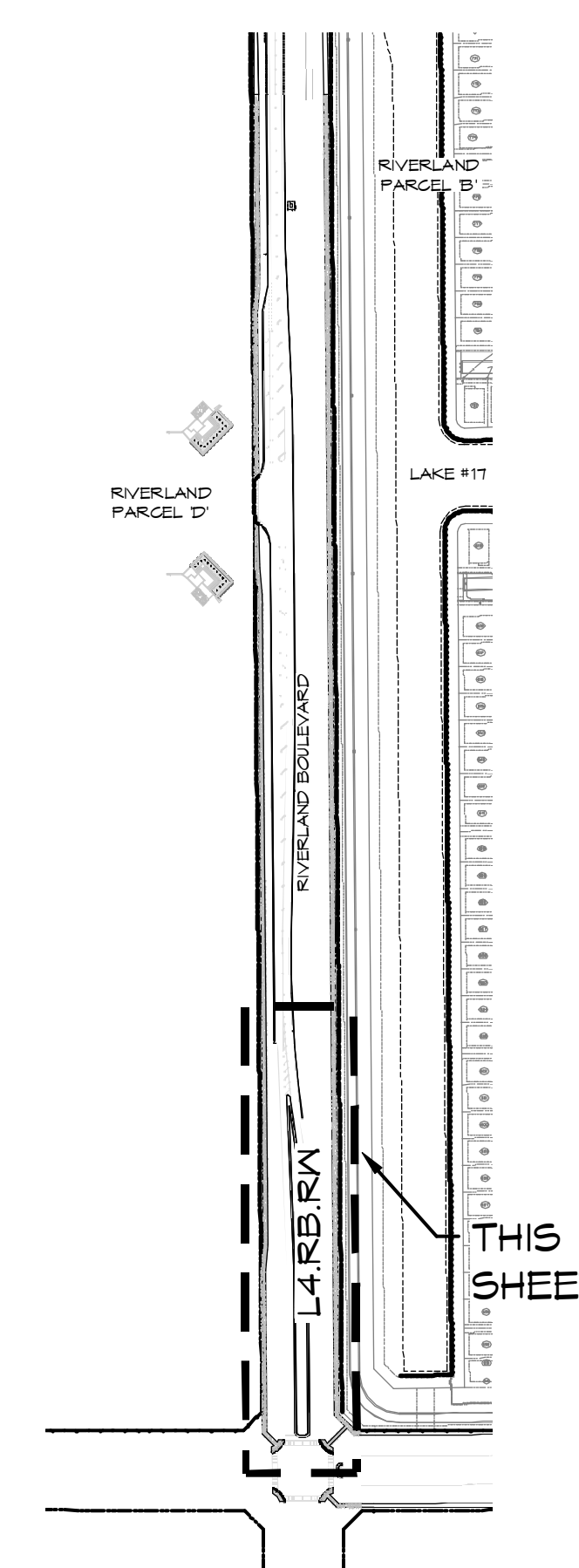


PLANT LIST - SHEET L4.RB.RW

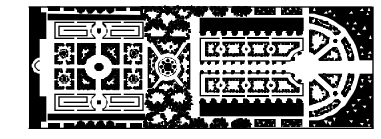
SYMBOL	BOTANICAL / COMMON NAME	SPECIFICATION	QTY
TREES			
CALB	Calliandra haematocephala / Powder Puff	8' ht., 15 gal., full canopy	1
QV12	Quercus virginiana / Live Oak	12' x 8', 25' cal., 25 gal., full canopy	36
PALMS			
BN2	Bismarckia nobilis / Bismarck Palm	1-2' cl., heavy cal., full frond	3
BN4	Bismarckia nobilis 'Silver' / Silver Bismarck Palm	4' cl., heavy cal., full frond	3
CM6	Caryota mitis / FishTail Palm	8' o.a., full to base, dense, 5'4" o.c.	40
RR12	Royaltonia regia / Royal Palm	12 gal., heavy cal., full frond	5
SPC	Sabal palmetto / Cabbage Palm	6' - 22' c.l. Hts., staggered Hts., hurricane cut, slick trunk, curved as noted on plan	5
SHRUBS, ACCENTS, AND GROUNDCOVER			
CFDB	Cordyline fruticosa 'Dr. Brown' / TI Plant	1 gal., 32" x 20", full	30
CRN	Cuscuta rosea 'Nana' / Dwarf Pitch Apple	3 gal., 14 x 10", full, 15" o.c.	60
PPV	Flemingia purpureum 'Vertigo'	3 gal., 20 x 14", full	122
SAT	Schefflera arboricola 'Trinitite' / Variegated Dwarf Schefflera	3 gal., 22 x 20", full	208
TD	Tripsacum dactyloides / Fakahatchee Grass	3 gal., 24" x 22", full, 30" o.c.	20
SOD	Stenotaphrum secundatum / St. Augustine Floristam	Solid sod, laid light, Qty in 5F	
BAHIA SOD	Paspalum notatum / Bahia Grass	Solid sod, laid light, Qty in 5F	
MULCH	Chocolate Mulch	2" Thick, A' Grade Raw Wood Mulch, CHOCOLATE color - BID PER CY	

NOTE:
 -ALL PLANT MATERIAL SHALL MEET OR EXCEED SIZE AND CONTAINER SPECIFICATIONS IN PLANT LIST. PLANT MATERIALS NOT MEETING SPECIFICATION WILL BE REJECTED. CONTRACTOR TO COORDINATE AVAILABILITY ISSUES WITH OWNER PRIOR TO COMMENCING WORK.
 -ALL TREE BRACING TO BE REMOVED BY THE CONTRACTOR AT THE CONCLUSION OF THE WARRANTY.
 ** TREES SPACED AT 40' O.C. TYPICAL, 50' MAXIMUM IN THE EVENT OF INFRASTRUCTURE CONFLICT.

SHEET KEY



10' 0" 20'
 PSL PROJECT NO. F22-210
 PSLUSD PROJECT NO. 5268-1



PARKER-YANNETTE
 design group, inc.

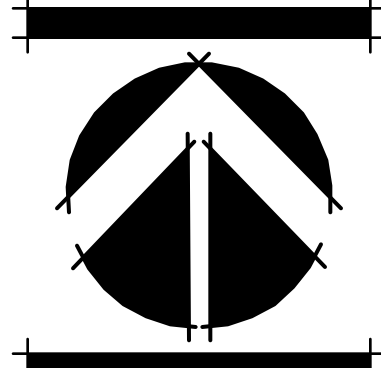
LANDSCAPE ARCHITECTURE
 PLANNING • GRAPHICS
 4425 Military Trail, Suite 202
 Jupiter, Florida 33458

Telephone: (561) 747-5069
 Fax: (561) 747-2041
 Email: mail@pydg.com
 License #LA-0001347

**RIVERLAND BOULEVARD AT
 RIVERLAND PARCEL D**
 PORT ST. LUCIE, FLORIDA
 R.O.W. PLANTING PLAN

DATE: 7.6.22
 DRAWN BY: ALJ/MAY
 JOB NO.: 17-071
 SCALE: 1" = 20'-0"
 FILENAME: Rv MH0A

REVISIONS:
 2.10.23 Resubmittal
 2.25.23 Add Irr pump stn.
 3.24.23 PSL cmnts
 3.30.23 PSL cmnts



SHEET:
L4.RB.RW