

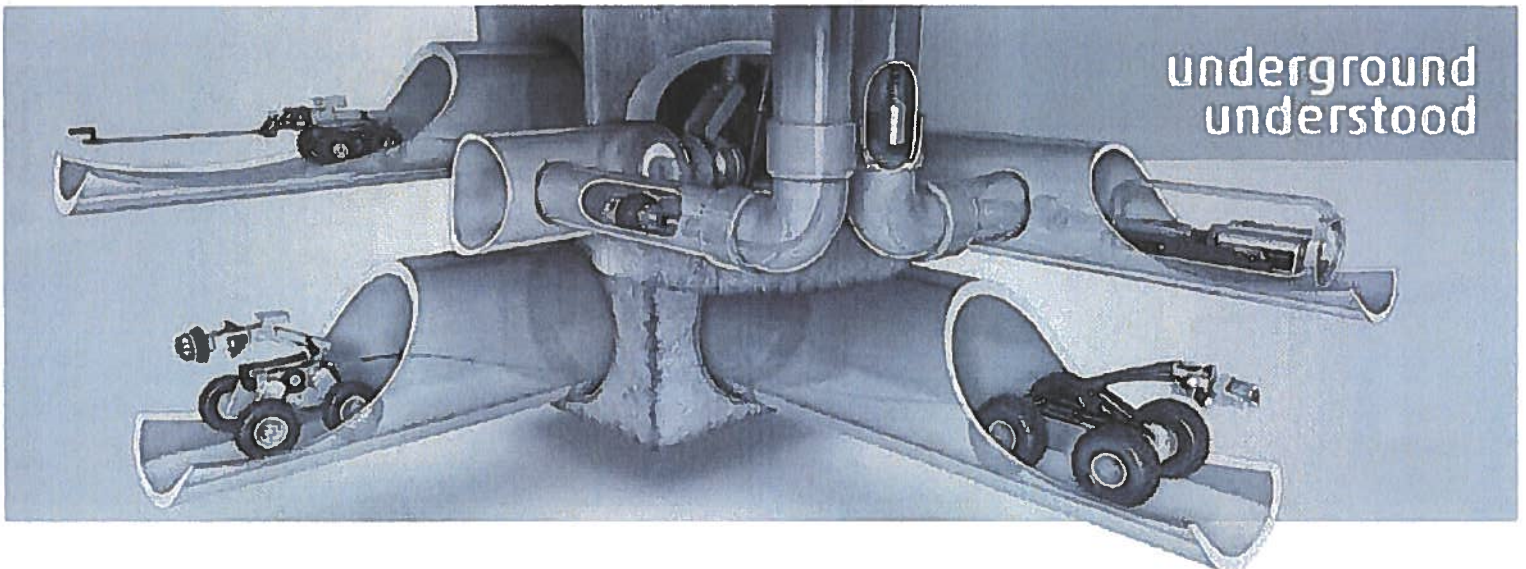
Prepared for:

CITY OF PORT ST. LUCIE, FL

900 SE OGDEN LANE  
PORT ST. LUCIE, FL 34983

**Request for Quote:  
Envirosight Underground Pipeline CCTV Equipment and Truck Build**

October 12, 2021



Submitted by:

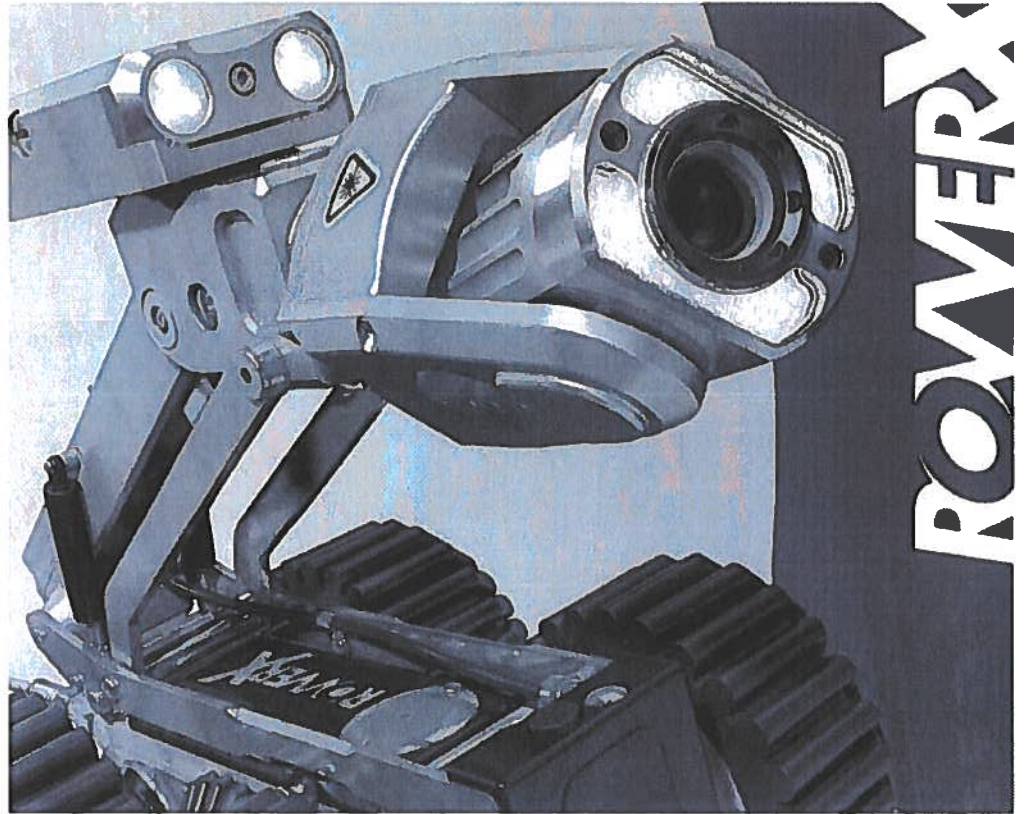
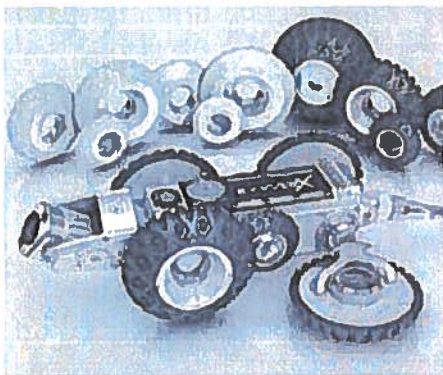
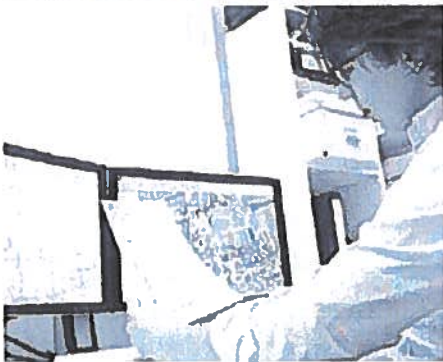


2525 Clarcona Road  
Apopka, FL 32703  
P: (407) 608-0544

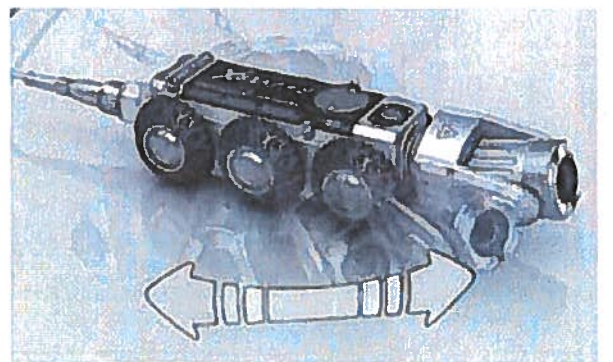
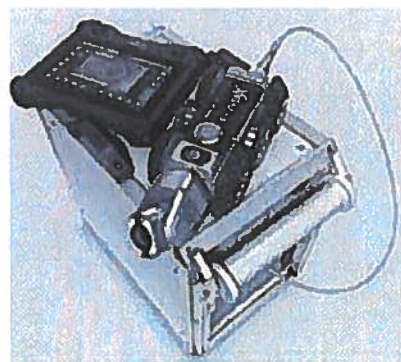
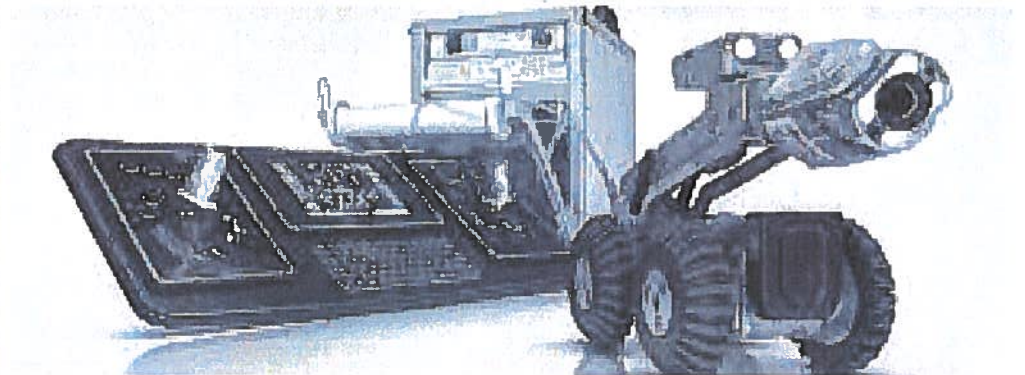
Brian Stewart  
bstewart@myEPG.com



**Envirosight** LLC



**ROVER**





ROVVER X desktop command center  
DCX5000

# Command performance

underground  
understood

The ROVVER X DCX5000 desktop command center puts every function at your fingertips, so you can inspect with maximum productivity—all from the comfort of your vehicle's control studio.



**Tilttable screen optimizes viewing.**

**Full QWERTY keyboard facilitates data entry.**

**Joysticks and thumbwheels grant precision control.**

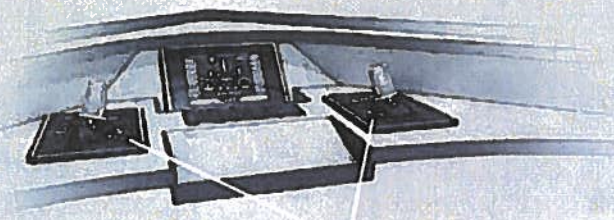
**10" screen and backlit legends enhance visibility in low light.**

**Installs as unitized panel, or separates into individually mountable components.**



## total integration

The DCX5000 works with all other ROVVER X components, so upgrading your capability has never been easier or more affordable.



## custom configuration

DCX5000 components can be mounted in the supplied bezel for a unitized installation, or positioned individually to suit the unique needs of the user.

## precision control

Proportional joysticks control crawler and camera movement, while thumbwheels adjust illumination intensity, cruise speed, camera height and reel tension.



**Envirosight**

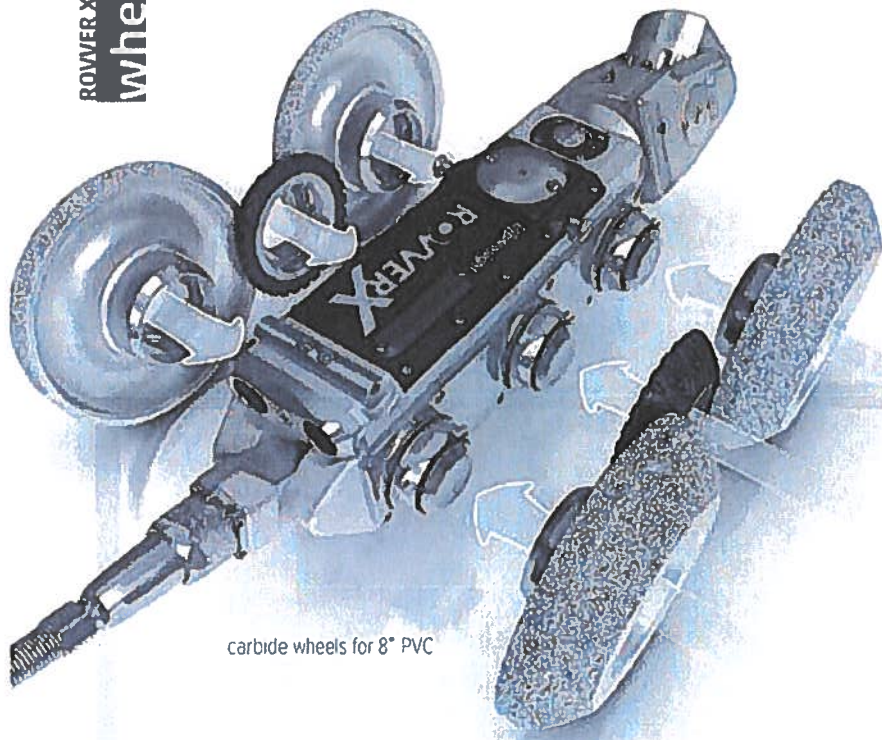
www.envirosight.com • (866) 936-8476



ROVER X Quick-Change  
wheel system

# tool-free, bolt-free hassle-free

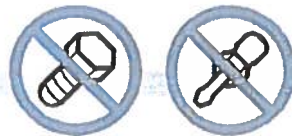
underground  
understood



carbide wheels for 8" PVC

Quick-Change wheels for ROVER X attach with a click—no bolts, washers or tools.

This makes your set-up and clean up hassle-free. The design also eliminates the risk of under-tightened wheels detaching. And new wheel geometry and tread patterns improve performance.



- Eliminate bolts, washers and tools.**
- Reconfigure your crawler faster.**
- Facilitate more thorough cleaning.**
- Prevent detachment due to undertightening.**
- Enhance handling and performance:**



### 10 wheel options

Four rubber sizes, three abrasive sizes, and three carbide sizes give you the flexibility for any application.

### easy upgrade

Quick-change hubs are available on all new systems, and can also mount on your existing ROVER X crawler.



rubber wheels for 12" concrete



## Envirosight

www.envirosight.com • (866) 936-8476

# ENVIROSIGHT



## UNDERGROUND UNDERSTOOD

### MEPS ROADPOWER T-250 FORD TRANSIT

### KEY FEATURES

#### OPERATOR STUDIO

solid bulkhead wall with fixed smoked window • Formica desk with wall outlets above and below • cork board wall above desk surface • overhead recessed LED lighting • pass-through door with aluminum kick plate • 19" Tru-Vu mounted monitor • high-back operator chair • carpeted walls and ceiling • black treaded rubber floor • safety light switches in truck cab • rack cabinet (for computer/DVD-RW) • wall file • video distribution booster • USB charger/12V receptacle combo

- 13,500-BTU roof air conditioner with 5600-BTU heat strip controlled via digital thermostat
- 2-drawer file cabinet under desk

#### EQUIPMENT BAY

stainless steel work surfaces • built-in heavy-duty storage/tool box • vertical crawler drawer • wash-down system (on-demand pump, lighted switch, 18-gallon water tank with exterior fill, 25' retractable hose reel) • overhead recessed LED lights • rear-facing 19" Tru-Vu monitor • plywood ceiling/alls covered in gray FRP • black treaded rubber floor • aluminum storage shelf and caddy with trash can • rubber glove dispenser

- tool package (manhole hook, pick, sledge hammer and shovel, all secured on aluminum brackets against diamond plate backing)

#### POWER

shore power cord with 120V wall adapter • breaker box • auto-transfer switch • 12V fuse block • hour meter

- 6.3kW MEPS RoadPower source (check availability for customer-supplied chassis)

#### EXTERIOR

tie-off clamp above rear bumper

- corner-mounted LED spotlights
- front roof-mounted LED Strobe
- rear LED arrow board

#### MISCELLANEOUS

hand sanitizer • hand cleaner • paper towels • rubber gloves • first-aid kit • fire extinguisher • Simple Green • dry-erase board • traffic cones • counter mat • remote mount • lanyard • front bumper cone storage

- back-up camera (factory supplied)
- back-up alarm (factory supplied)

\* VIN must contain R3x; 3.2-liter I5 diesel or 3.7-liter gas (no EcoBoost engine) required





*Actual build will vary based on specifications*

**Envirosight**<sup>LLC</sup>



*Actual build will vary based on specifications*



# FLORIDA SERVICE LOCATIONS



**Kevin Johnson**  
Parts Manager | Apopka

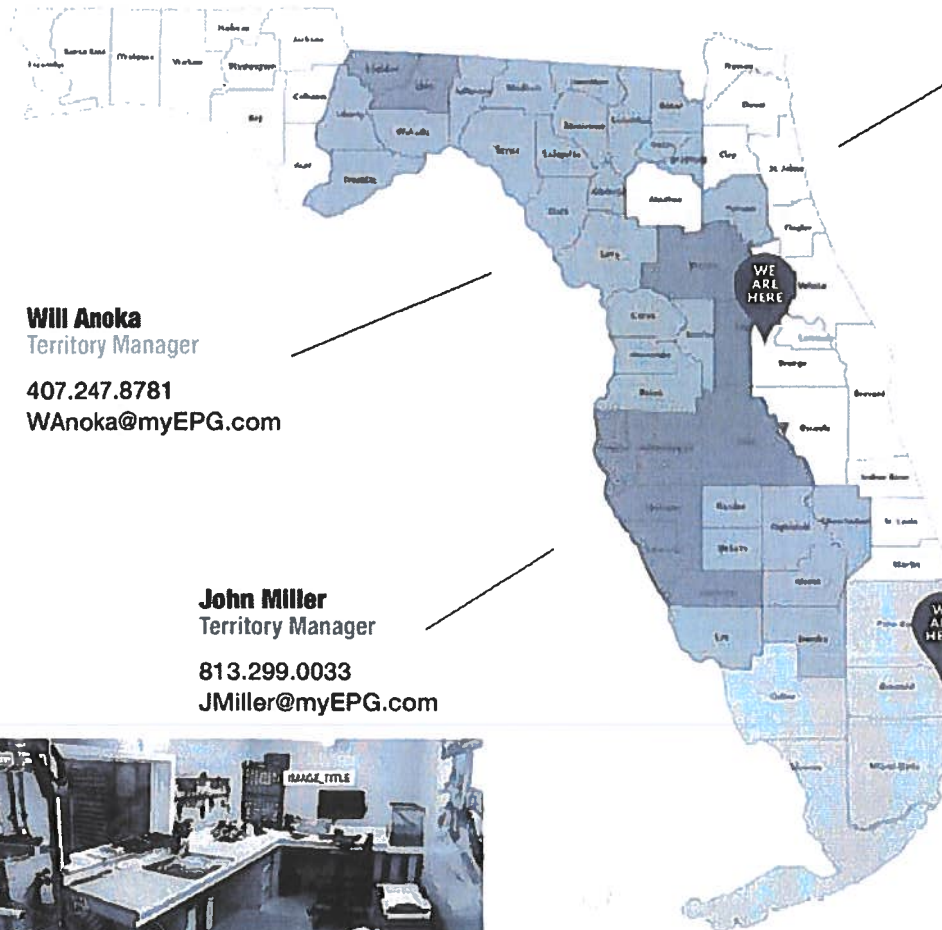
407.509.6923  
KJohnson@myEPG.com

**Brian Stewart**  
Envirosight Camera Inspection Manager | Apopka

407.608.0544  
BStewart@myEPG.com

**Fred Rodriguez**  
Parts Specialist | Apopka

407.509.6923  
FRodriguez@myEPG.com



**Nick Causey**  
Territory Manager

904.537.8799  
NCausey@myEPG.com

**Will Anoka**  
Territory Manager  
407.247.8781  
WAnoka@myEPG.com


**John Miller**  
Territory Manager  
813.299.0033  
JMiller@myEPG.com

**Paul Hart**  
Territory Manager  
561.719.1395  
PHart@myEPG.com





**SPECIFICATIONS AND PRICING**

City of Port St. Lucie, FL	<b>Envirosight Pipeline CCTV Vehicle</b>	
10/12/21	<b>Pricing Direct from Tallahassee Purchase Contract #3708</b>	
Item	Description	Contract #3708 Price
<b>Chassis and Body Build-Out</b>		
R3X	Ford R3X T250 High Roof Transit, gas engine.	\$ 41,900.00
Transit MEPS Build	Build out of provided vehicle including 6.3kW MEPS Road Power Source (see build sheet for additional information), Including:	\$ 41,380.00
	13,500 BTU roof-mounted Air Conditioner with 5600 BTU heat strip controlled via digital thermostat	
	2 Drawer file cabinet with formica top	
	Tool package with manhole hook, sledge hammer, shovel, all mounted on brackets	
	Backup alarm	
	Backup camera	
	Corner mounted LED spotlights	
	Front roof mounted LED strobe light	
	Rear mounted LED arrow board	
	Bulkhead wall between office room and equipment room	
	Bench seat in office room	
	Multiple storage cabinets, electrical outlets, and USB ports	
	Water wash down system with retractable hose reel	
	Tool box cabinet with slide out drawers	
	Front Bumper Cone Mount	
19" Tru-Vu Monitor	Additional for rackmount computer	\$ 1,019.00
Sink	Sink	\$ 1,835.00
Quickview Brackets	Quickview Brackets	\$ 245.00
Underdesk keyboard	Underdesk keyboard	\$ 204.00
E-PA-Rackmount-01	Rackmount Computer includes wireless keyboard and mouse	\$ 2,757.35
E-AverCard	Aver Media Card for Digital Video Capture	\$ 199.14
E-000-0035-00	Top manhole roller cable protector	\$ 372.50
E-000-0036-00	2" Tiger Tail	\$ 67.90
<b>Envirosight CCTV Equipment</b>		
E-RX-SYS-PRO-21	Rovver X Truck Pro Mainline Televising System - System includes DCX5000 Desktop Controller with CCUI including emergency stop, RAX300 Automatic Cable Reel with 1000ft cable, wireless remote controller, reel mounting frame, RX130 Quick Change version crawler with 3 sets of rubber wheels for 6" to 16" pipe diameter, RCX90 pan, tilt, zoom camera, and pressurization kit.	\$ 86,122.40
E-080-0709-00	(4) 6" Carbide Steel Aggressive Quick Disconnect Wheels	\$ 1,732.64
E-080-0705-00	(4) 6" Medium Grease Quick Disconnect Wheels	\$ 1,039.60
E-080-0706-00	(4) 8" Medium Grease Quick Disconnect Wheels	\$ 1,324.96
E-080-0711-00	(4) 8" Carbide Steel Aggressive Quick Disconnect Wheels	\$ 2,283.00
E-558-0580-01	(6) Quick Disconnect Hubs for crawler wheels	\$ 1,890.00
E-598-0900-00	Rovver X Vision Controller 500 for Portable Inspections	\$ 12,230.40
VX-ADVANCED-1-SUB	(2) Year ANNUAL WinCan VX Advanced License includes: Section/Lateral/Manhole, Basic Reporting, Data Viewer, All languages & Standards, Map Entry, PhotoAssistant, Drawing function, Meta DB, Data Transfer Tool, SQL & Oracle database option, Multiple Inspection, Grading, Software Encoding, MPEG 1/2/4 Recording, NASSCO Validator, Text Generator, Inclination, Local deformation & Crack width with laser.	\$ 5,824.00
Transport	Transport and Delivery	\$ 2,500.00
Training	Training, On-Site, Unlimited	\$ 0.00
	SUBTOTAL	\$ 204,926.89
	SALES TAX	\$ 0.00
	<b>TOTAL</b>	<b>\$ 204,926.89</b>



All pricing is direct from **Tallahassee Purchase Contract #3708**

To access online:

[www.talgov.com](http://www.talgov.com)

In Search Bar type, **Fleet Contracts**

Scroll down to **Fleet Contracts I Transparency**

Scroll down to **Environmental Contract Pricing Page**

Scroll down to **Download the Envirosight Inspection Camera Contract**

Please call me if you have any questions.

**Thanks for the opportunity to earn your business!**

Please reply to:

**Brian Stewart, Inspection Division Manager**

Environmental Products Group, Inc.

2525 Clarcona Road

Apopka, FL 32703

Cell: (407) 608-0544

Email: [bstewart@myEPG.com](mailto:bstewart@myEPG.com)

[www.myepg.com](http://www.myepg.com)