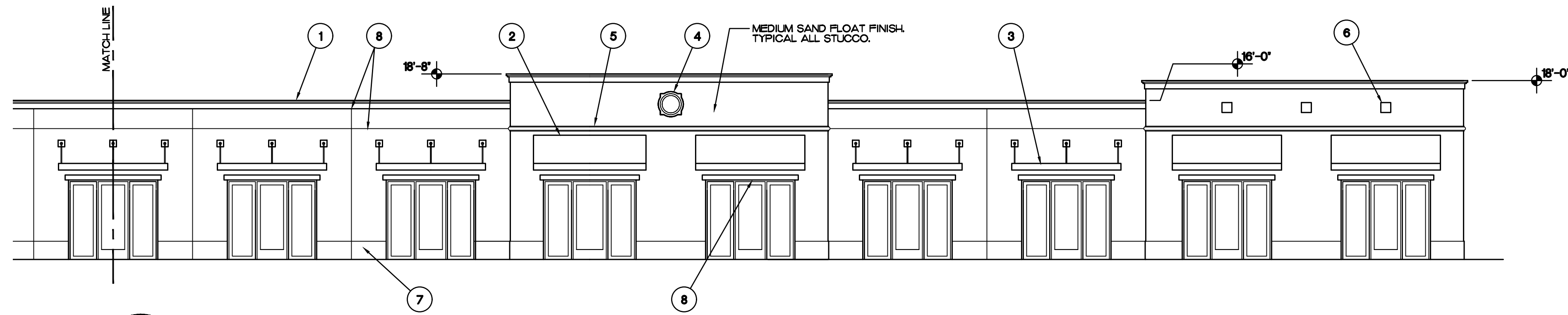
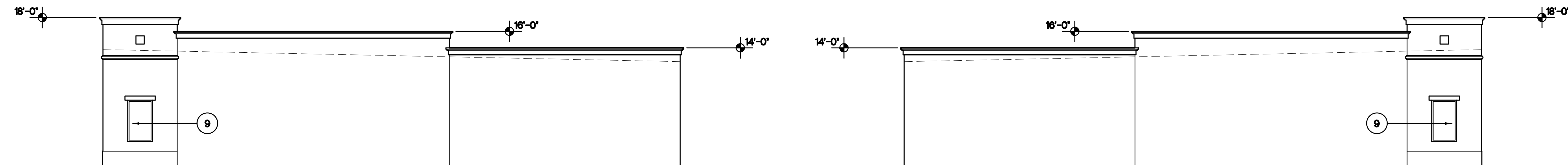


**1** BUILDING 1  
**PARTIAL WEST ELEVATION-PRIMARY FACADE**  
SCALE: 1/8"=1'-0"



**2** BUILDING 1  
**PARTIAL WEST ELEVATION-PRIMARY FACADE**  
SCALE: 1/8"=1'-0"



**3** BUILDING 1  
**SOUTH ELEVATION-PRIMARY FACADE**  
SCALE: 1/8"=1'-0"

**4** BUILDING 1  
**NORTH ELEVATION-PRIMARY FACADE**  
SCALE: 1/8"=1'-0"

**ARCHITECTURAL ELEMENTS**

- 1 THREE DIMENSION CORNICE TREATMENT
- 2 FABRIC AWNING ABOVE STOREFRONT
- 3 ALUMINUM CANOPY ABOVE STOREFRONT
- 4 FOAM/STUCCO MEDALLION
- 5 FOAM/STUCCO TRIM
- 6 BUILT-UP STUCCO ACCENT SQUARES
- 7 BUILT-UP STUCCO BASE
- 8 BUILT-UP BANDING ABOVE OPENINGS
- 9 RECTANGULAR WINDOWS
- 10 MINIMUM 2' CHANGE IN HEIGHT OF PARAPETS

**500 Stadium Business Center**  
500 NW Stadium Drive  
Port St. Lucie, Florida

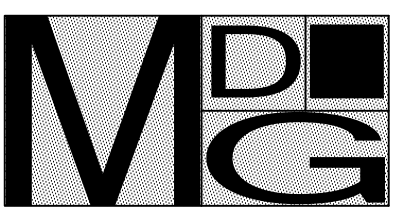
Revisions:


Content:  
**Building 1  
Exterior Elevations**

Dwg:

Date: **6/15/21**

Proj. No.	<b>D2115</b>
Sheet No.	

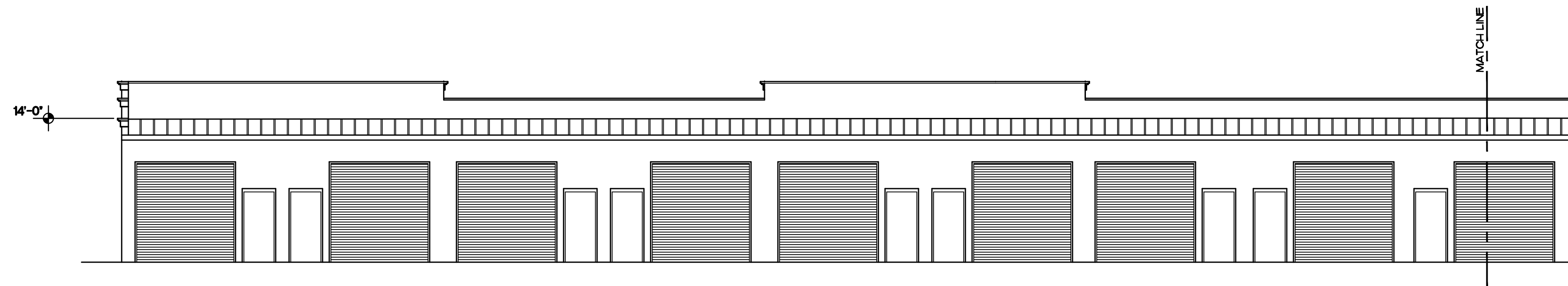


Morel De Guiramond  
architecture LLC

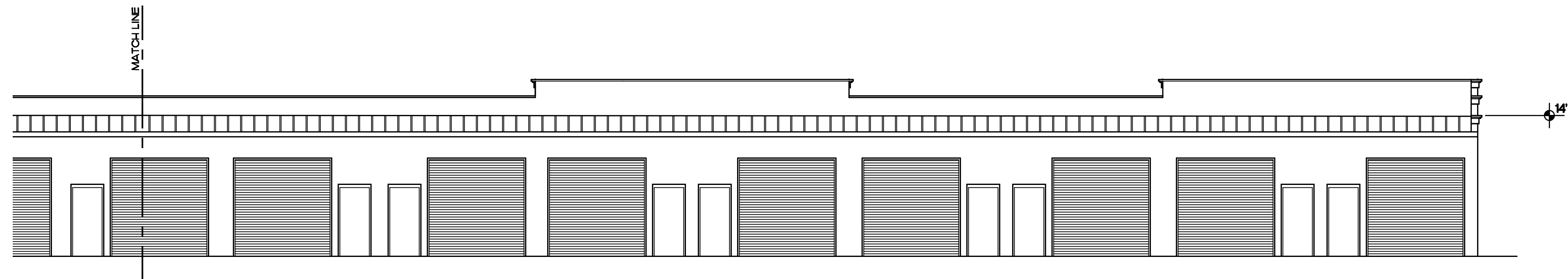
14080 Mahogany Avenue  
Jacksonville, Florida  
32258  
(561) 758 8454  
memorel@outlook.com

Corporation Number  
AA26001553

Michael Morel  
Architect  
AR0013132



**1** BUILDING 1  
PARTIAL EAST ELEVATION-SECONDARY FACADE  
SCALE: 1/8"=1'-0"



**2** BUILDING 1  
PARTIAL EAST ELEVATION-SECONDARY FACADE  
SCALE: 1/8"=1'-0"

**500 Stadium Business Center**  
500 NW Stadium Drive  
Port St. Lucie, Florida

Revisions:

Content:

**Building 1**  
Exterior Elevations

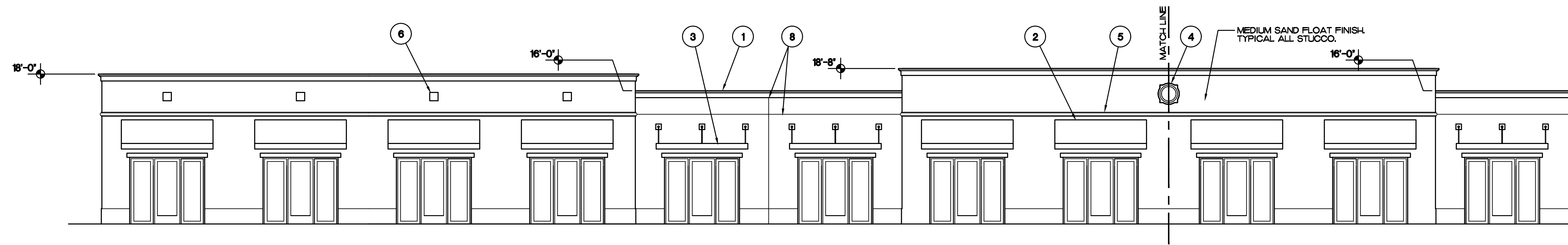
Dwg:

Date: 6/15/21

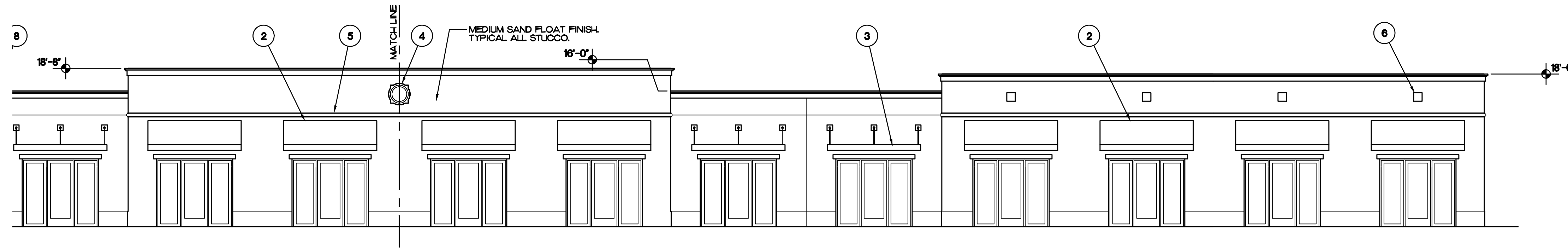
Proj. No.  
D2115

Sheet No.

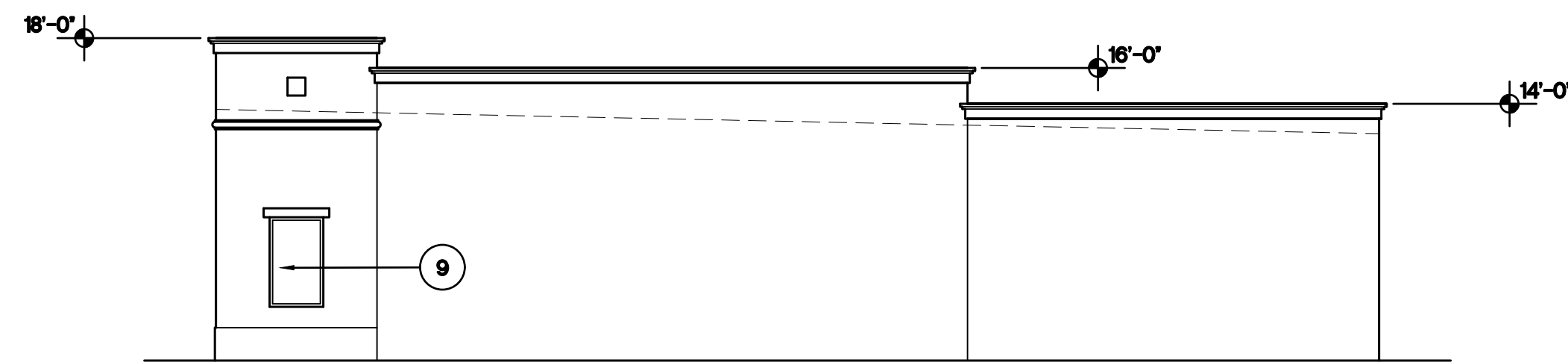
**A4.2**



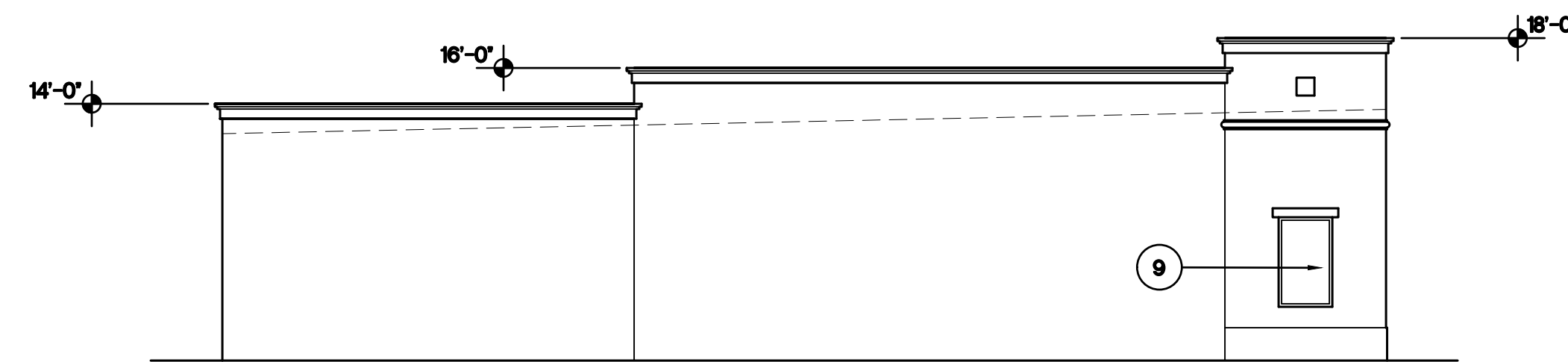
**1** BUILDING 2  
**PARTIAL EAST ELEVATION-PRIMARY FACADE**  
SCALE: 1/8"=1'-0"



**2** BUILDING 2  
**PARTIAL EAST ELEVATION-PRIMARY FACADE**  
SCALE: 1/8"=1'-0"



**3** BUILDING 2  
**NORTH ELEVATION-PRIMARY FACADE**  
SCALE: 1/8"=1'-0"



**4** BUILDING 2  
**SOUTH ELEVATION-PRIMARY FACADE**  
SCALE: 1/8"=1'-0"

**ARCHITECTURAL ELEMENTS**

- 1 THREE DIMENSION CORNICE TREATMENT
- 2 FABRIC AWNING ABOVE STOREFRONT
- 3 ALUMINUM CANOPY ABOVE STOREFRONT
- 4 FOAM/STUCCO MEDALLION
- 5 FOAM/STUCCO TRIM
- 6 BUILT-UP STUCCO ACCENT SQUARES
- 7 BUILT-UP STUCCO BASE
- 8 BUILT-UP BANDING ABOVE OPENINGS
- 9 RECTANGULAR WINDOWS
- 10 MINIMUM 2' CHANGE IN HEIGHT OF PARAPETS

**500 Stadium Business Center**  
500 NW Stadium Drive  
Port St. Lucie, Florida

Revisions:


Content:

**Building 2  
Exterior Elevations**

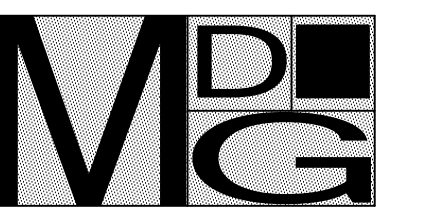
Dwg:

Date: 6/15/21

Proj. No. D2115

Sheet No.

**A4.3**



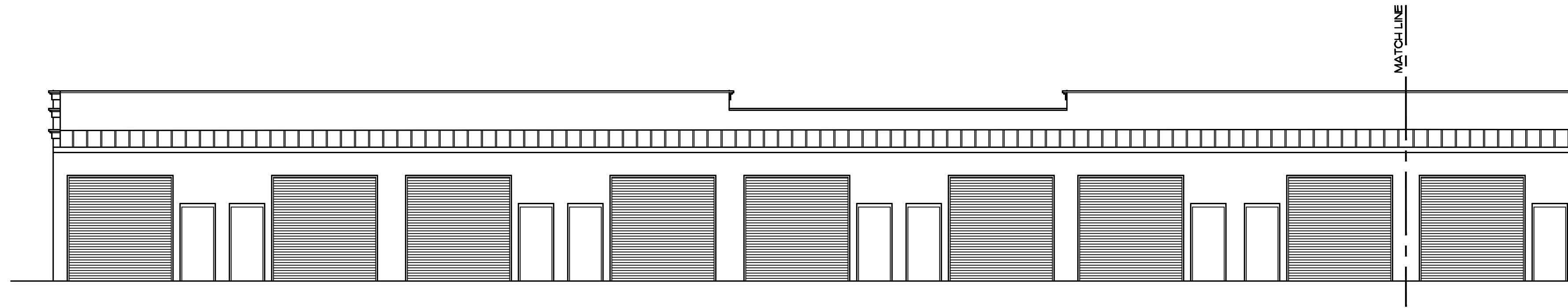
Morel De Guiramon  
architecture LLC

14080 Mahogany Avenue  
Jacksonville, Florida  
32258  
(904) 758 8454

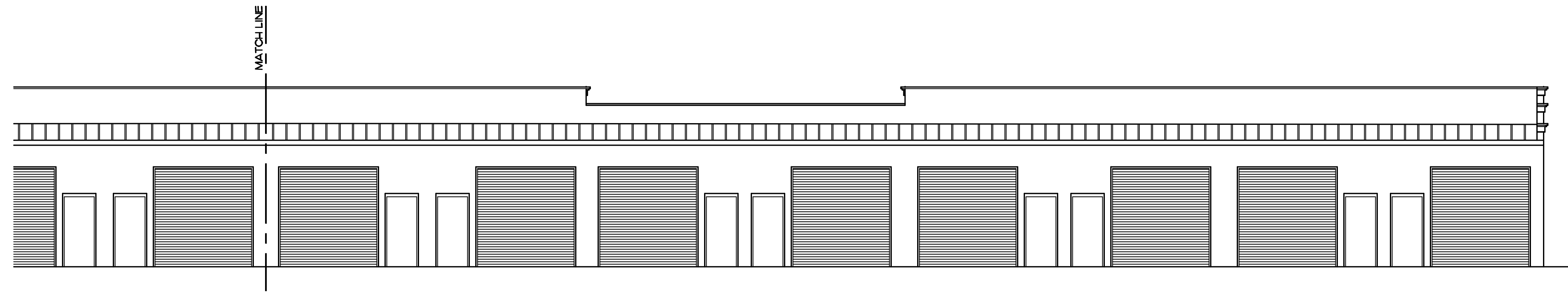
memorel@outlook.com

Corporation Number  
AA26001553

Michael Morel  
Architect  
AR0013132



**1** BUILDING 2  
**PARTIAL WEST ELEVATION-SECONDARY FACADE**  
SCALE: 1/8"=1'-0"



**2** BUILDING 2  
**PARTIAL WEST ELEVATION-SECONDARY FACADE**  
SCALE: 1/8"=1'-0"

**500 Stadium Business Center**  
500 NW Stadium Drive  
Port St. Lucie, Florida

Revisions:

Content:

**Building 2**  
**Exterior Elevations**

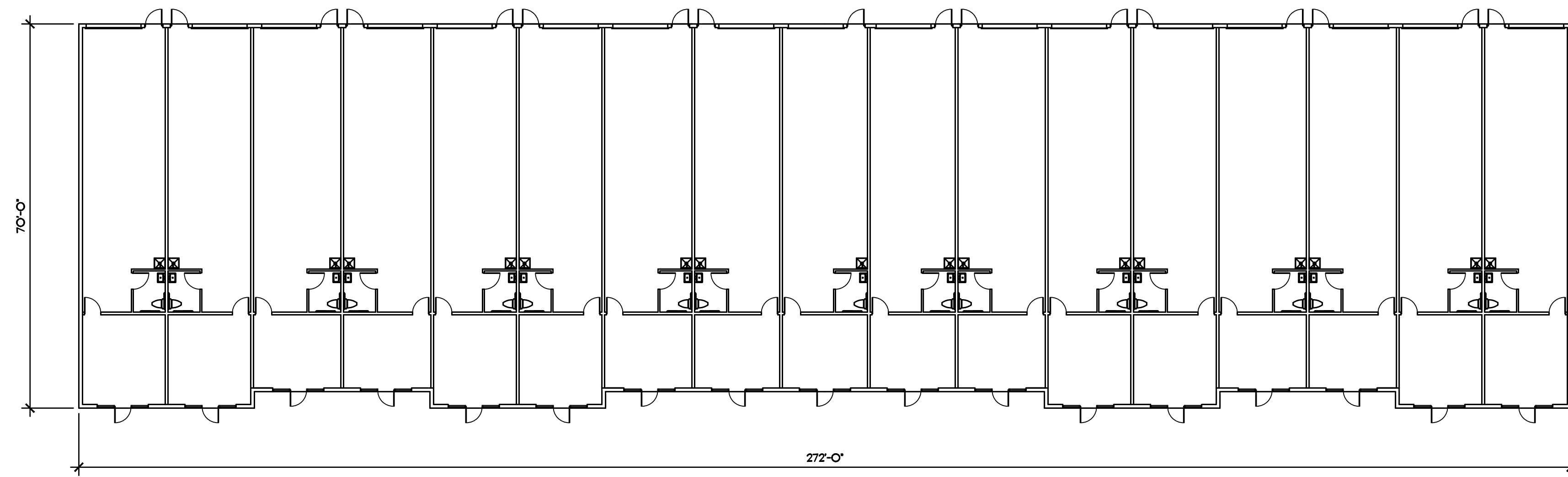
Dwg:

Date: **6/15/21**

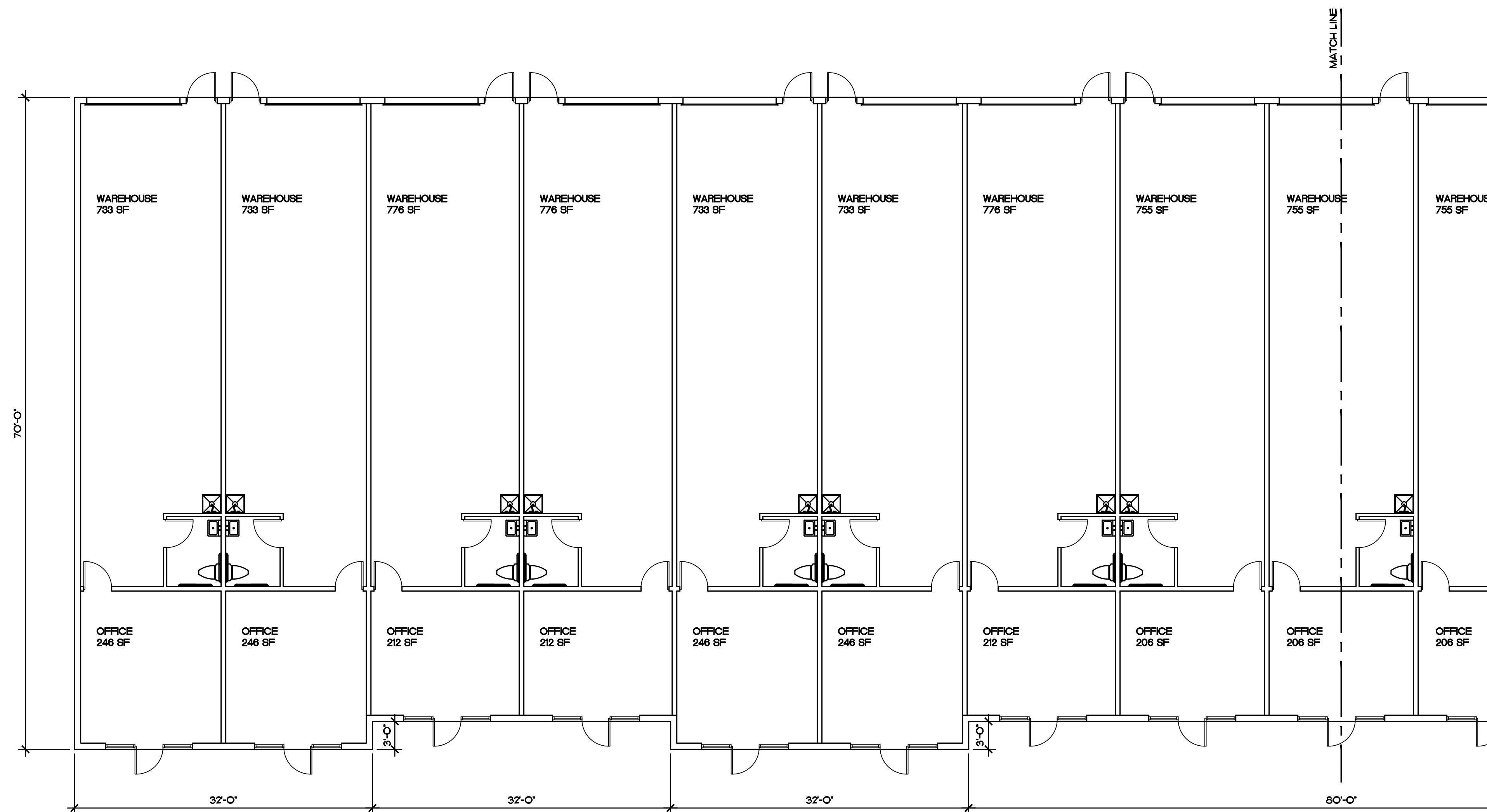
Proj. No.  
**D2115**

Sheet No.

**A4.4**



**1** BUILDING 1  
**BUILDING PLAN**  
SCALE: 1/8"=1'-0"  
18,608 SF



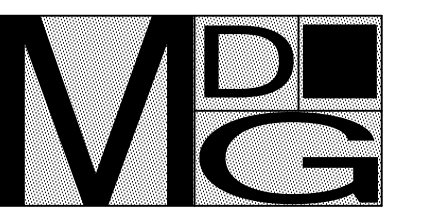
**2** BUILDING 1  
**PARTIAL FLOOR PLAN**  
SCALE: 1/8"=1'-0"

**500 Stadium Business Center**  
500 NW Stadium Drive  
Port St. Lucie, Florida

Revisions:


Content:  
**Building 1  
Floor Plan**

Dwg:  
Date: 6/15/21  
Proj. No. D2115  
Sheet No.



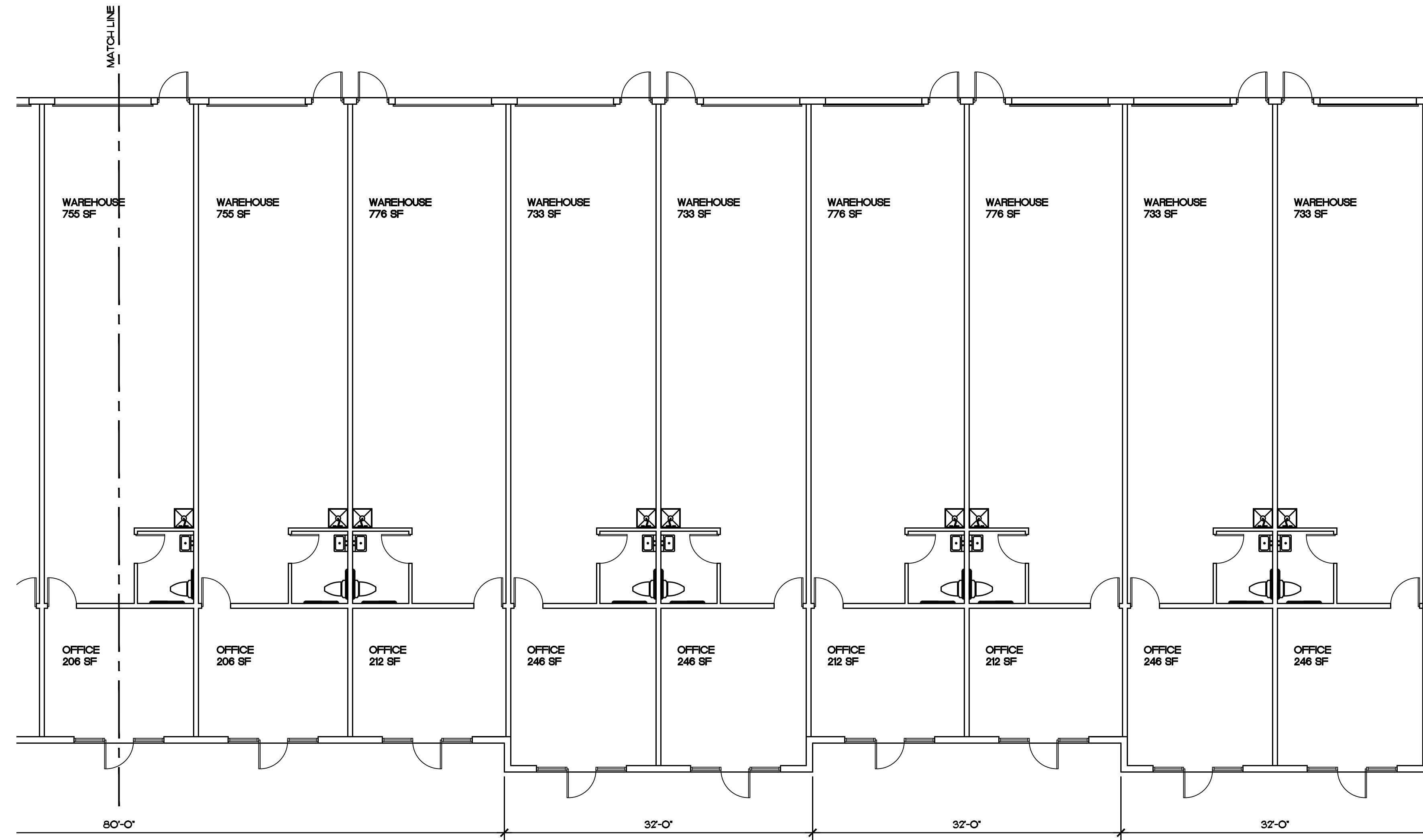
Morel De Guiramon  
architecture LLC

14080 Mahogany Avenue  
Jacksonville, Florida  
32258  
(561) 758 8454

memorel@outlook.com

Corporation Number  
AA26001553

Michael Morel  
Architect  
AR0013132



**1** BUILDING 1  
**PARTIAL FLOOR PLAN**  
SCALE: 1/8"=1'-0"

**500 Stadium Business Center**  
500 NW Stadium Drive  
Port St. Lucie, Florida

Revisions:


Content:

**Building 1  
Floor Plan**

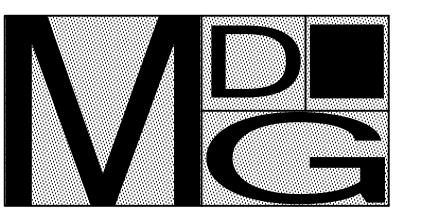
Dwg:

Date: **6/15/21**

Proj. No. **D2115**

Sheet No.

**A2.2**

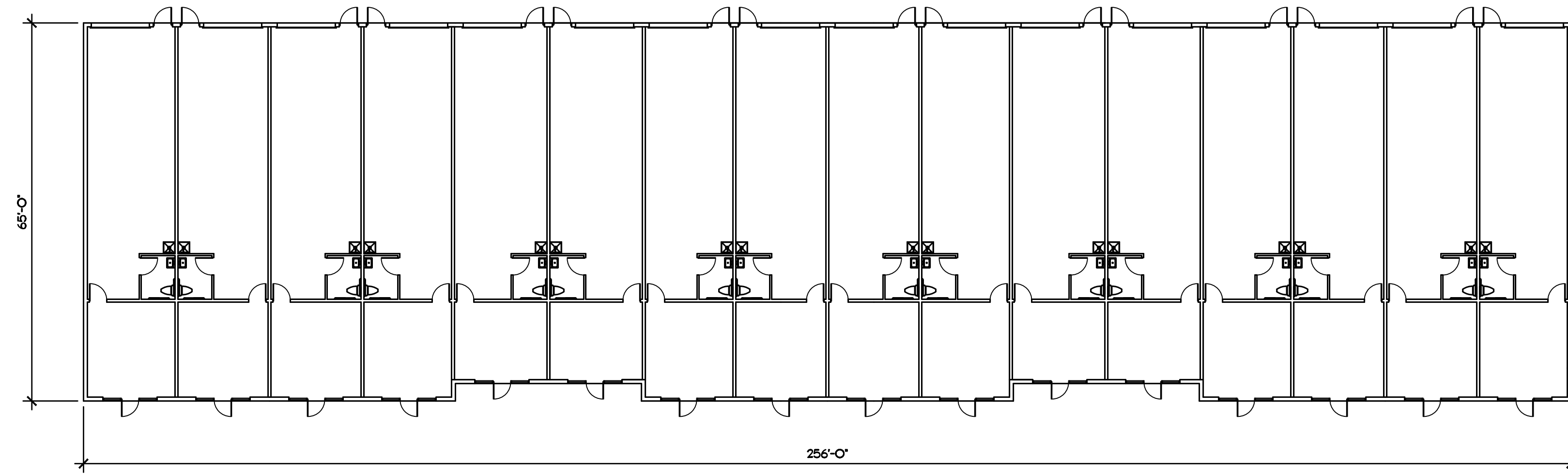


Morel De Guiramond  
architecture LLC

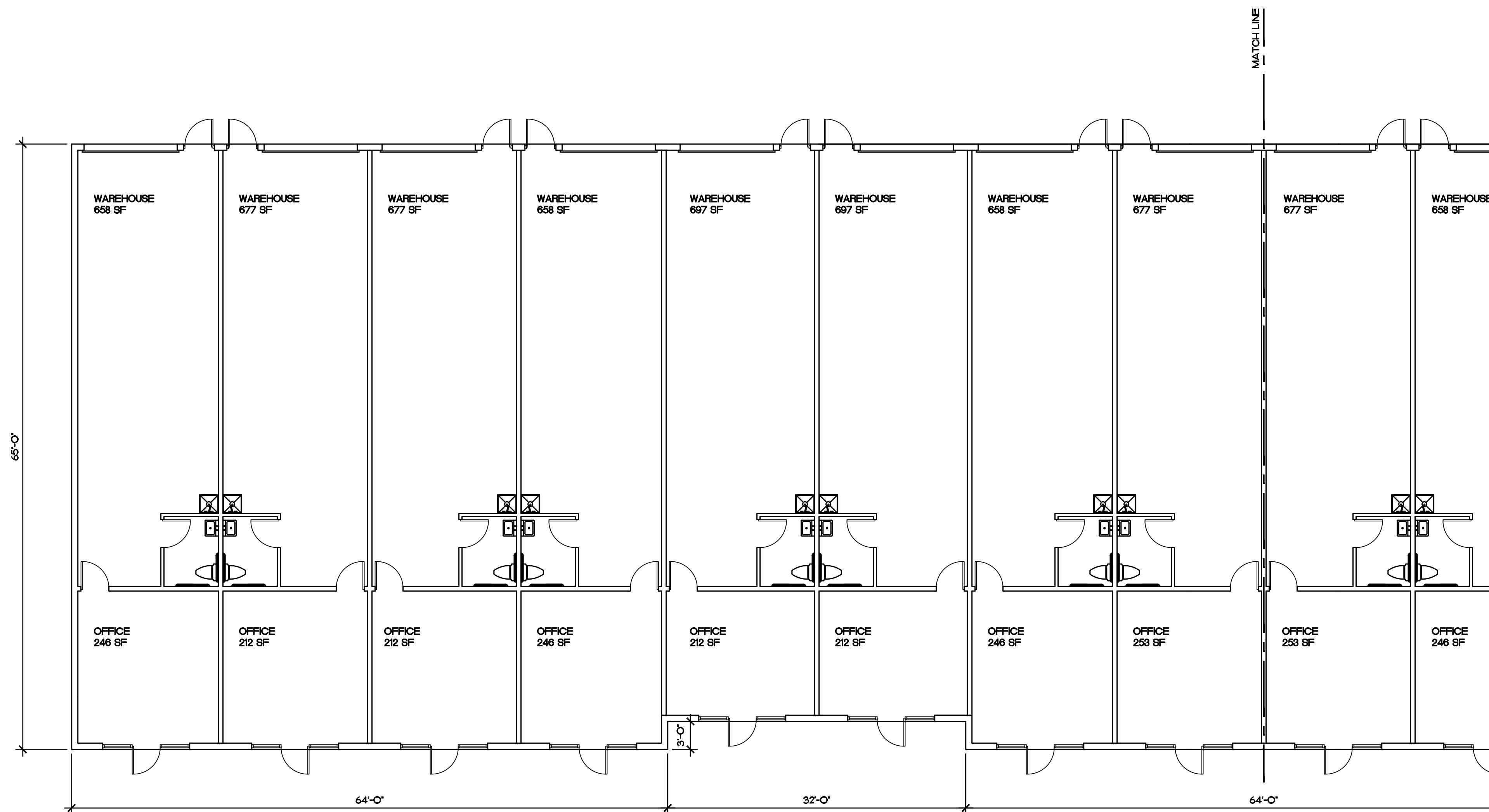
14080 Mahogany Avenue  
Jacksonville, Florida  
32258  
(904) 758 8454  
memorel@outlook.com

Corporation Number  
AA26001553

Michael Morel  
Architect  
AR0013132



**1** BUILDING 2  
BUILDING PLAN  
SCALE: 1/8"=1'-0"  
16,448 SF



**2** BUILDING 2  
PARTIAL FLOOR PLAN  
SCALE: 1/8"=1'-0"

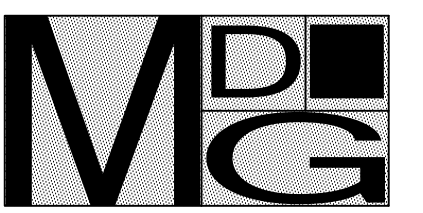
**500 Stadium Business Center**  
500 NW Stadium Drive  
Port St. Lucie, Florida

Revisions:


Content:  
**Building 2  
Floor Plan**

Dwg:  
Date: 6/15/21  
Proj. No. D2115  
Sheet No.

**A2.3**

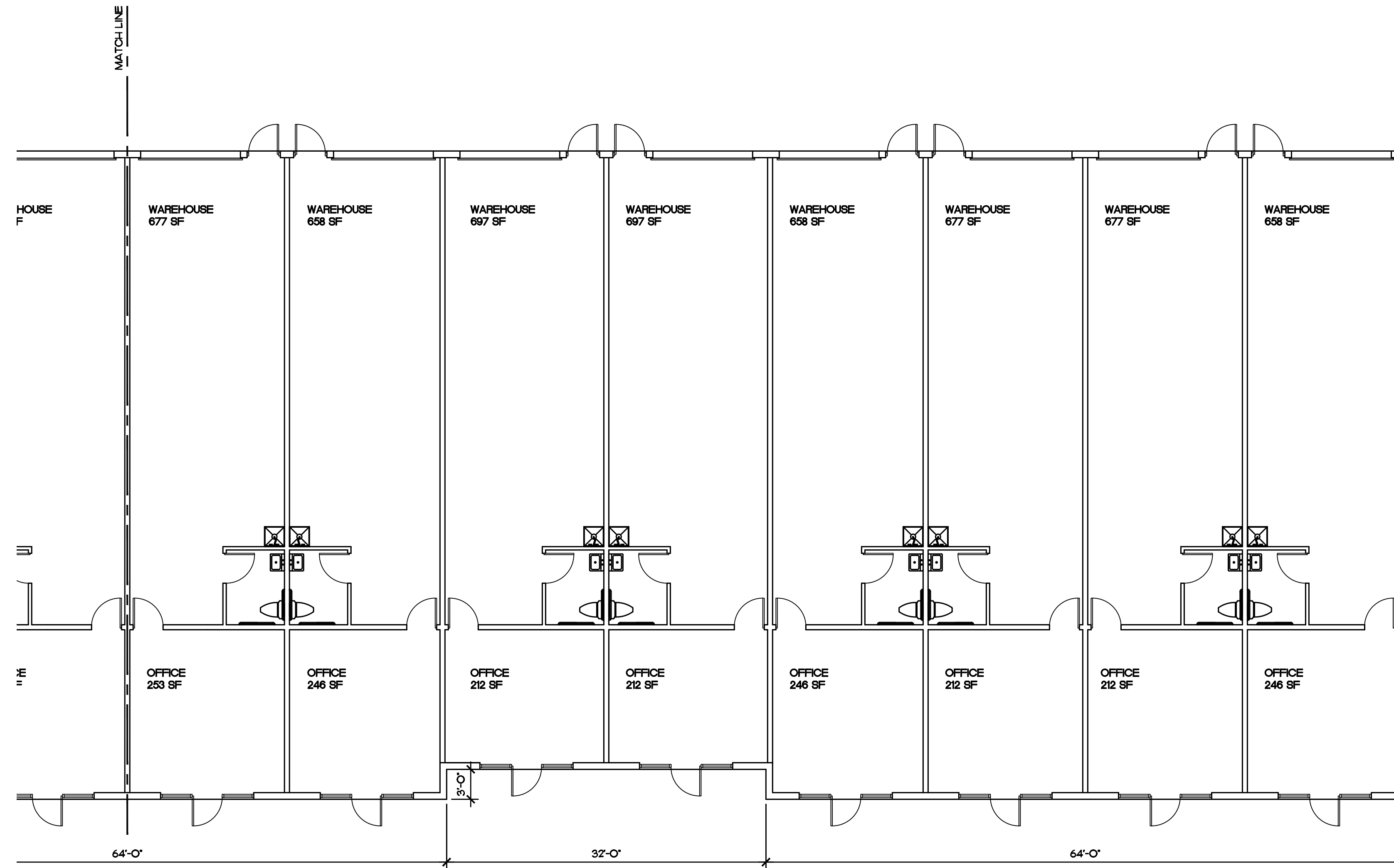


Morel De Guiramon  
architecture LLC

14080 Mahogany Avenue  
Jacksonville, Florida  
32258  
(904) 758 8454  
memorel@outlook.com

Corporation Number  
AA26001553

Michael Morel  
Architect  
AR0013132



**1** BUILDING 2  
**PARTIAL FLOOR PLAN**  
SCALE: 1/8"=1'-0"

**500 Stadium Business Center**  
500 NW Stadium Drive  
Port St. Lucie, Florida

Revisions:

Content:

**Building 2  
Floor Plan**

Dwg:

Date: **6/15/21**

Proj. No. **D2115**

Sheet No.

**A2.4**