



CITY OF PORT ST. LUCIE
 CITY CLERK'S OFFICE
 121 SW PORT ST. LUCIE BLVD.
 PORT ST. LUCIE, FL 34984-5099

NOTICE OF PUBLIC HEARING

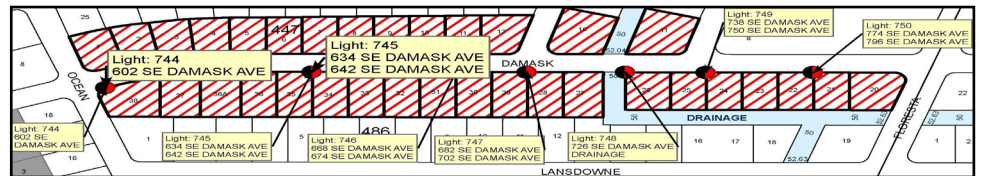
**NEW RESIDENTIAL STREET LIGHTING ASSESSMENT AREA FOR FISCAL YEAR 2024/2025
 CITY COUNCIL MEETING**

SEPTEMBER 23, 2024 AT 6:00 PM
 CITY HALL – COUNCIL CHAMBER
 121 SW PORT ST. LUCIE BOULEVARD
 PORT ST. LUCIE, FLORIDA

The lots listed below are in an area balloted and passed by a majority of the property owners returned ballots. The City contemplates levying an assessment estimated at \$26.00 per lot. Payment will be on a yearly basis and collected by the St. Lucie County Tax Collector. This assessment will be included in your November 2025 tax bill on the non-advalem portion of your tax bill. A description of the properties specially benefited (by section, block and lot) and a map showing the proposed location of the street lighting is as follows:

STREET LIGHTING ASSESSMENT AREA
 BOUNDARY #664
 SE DAMASK AVENUE – SECTION 10

- BLOCK 447 LOTS 1 Through 12
- BLOCK 448 LOTS 10 And 11
- BLOCK 486 LOTS 20 Through 36
- BLOCK 486 LOTS 36A Through 38



The public hearing will be held in the City Council Chambers at 6:00 p.m. on September 23, 2024, or as soon thereafter as the matter may be heard, located at the City of Port St. Lucie Municipal Complex (City Hall – Council Chamber), 121 S.W. Port St. Lucie Blvd., Port St. Lucie, Florida 34984 for receiving public comment on the proposed collection of the assessments. All affected property owners have a right to appear at the hearing and may file written objections with the Council in care of the City Clerk prior to the meeting. Written objections may also be filed with the City Clerk at the hearing any time before the adjournment of the hearing. If a person decides to appeal any decision made by the Council with respect to any matter considered at the hearing, such person will need a record of the proceedings and may need to arrange for a court reporter to ensure that a verbatim record is made. In accordance with the Americans with Disabilities Act, persons needing special accommodations or an interpreter to participate in this proceeding should contact the City Clerk's office at 772-871-5157, at least seven days prior to the date of the hearing.

Copies of the assessment roll, showing the amount of the assessment to be imposed against each parcel of property, and the legal documentation relating to the assessment is available for inspection in the office of the City Clerk, located on the Third Floor of City Hall, 121 S.W. Port St. Lucie Blvd., Port St. Lucie, Florida.

The assessments will be collected on the non-ad valorem portion of the tax bill to be mailed by the St. Lucie County Tax Collector in November 2025. Failure to pay the assessment will cause a tax certificate to be issued against the property, which may result in a loss of title to your property. Based on a successful vote of the 12 Residential Street Lighting Areas to be approved with the September 23, 2024, Resolution, the estimated revenue generated to pay for the yearly street lighting of **those 12 areas** is approximately **\$8,944**. If you have any questions, please contact the City of Port St. Lucie City Attorney's Office at 772-871-5294, Monday through Friday between 8:00 a.m. and 5:00 p.m.



CITY OF PORT ST. LUCIE
 CITY CLERK'S OFFICE
 121 SW PORT ST. LUCIE BLVD.
 PORT ST. LUCIE, FL 34984-5099

NOTICE OF PUBLIC HEARING

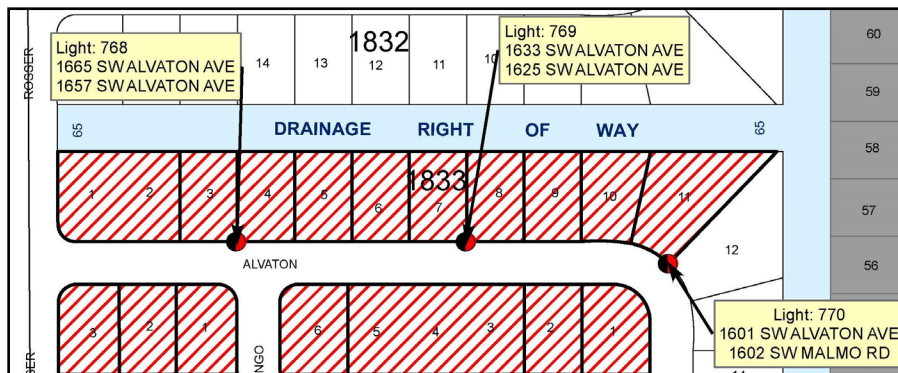
**NEW RESIDENTIAL STREET LIGHTING ASSESSMENT AREA FOR FISCAL YEAR 2024/2025
 CITY COUNCIL MEETING**

SEPTEMBER 23, 2024 AT 6:00 PM
 CITY HALL – COUNCIL CHAMBER
 121 SW PORT ST. LUCIE BOULEVARD
 PORT ST. LUCIE, FLORIDA

The lots listed below are in an area balloted and passed by a majority of the property owners returned ballots. The City contemplates levying an assessment estimated at \$26.00 per lot. Payment will be on a yearly basis and collected by the St. Lucie County Tax Collector. This assessment will be included in your November 2025 tax bill on the non-advalorem portion of your tax bill. A description of the properties specially benefited (by section, block and lot) and a map showing the proposed location of the street lighting is as follows:

STREET LIGHTING ASSESSMENT AREA
 BOUNDARY #666
 SW ALVATON AVENUE – SECTION 07

- BLOCK 1833 LOTS 1 Through 11
- BLOCK 1834 LOTS 1 Through 6
- BLOCK 1847 LOTS 1 Through 3



The public hearing will be held in the City Council Chambers at 6:00 p.m. on September 23, 2024, or as soon thereafter as the matter may be heard, located at the City of Port St. Lucie Municipal Complex (City Hall – Council Chamber), 121 S.W. Port St. Lucie Blvd., Port St. Lucie, Florida 34984 for receiving public comment on the proposed collection of the assessments. All affected property owners have a right to appear at the hearing and may file written objections with the Council in care of the City Clerk prior to the meeting. Written objections may also be filed with the City Clerk at the hearing any time before the adjournment of the hearing. If a person decides to appeal any decision made by the Council with respect to any matter considered at the hearing, such person will need a record of the proceedings and may need to arrange for a court reporter to ensure that a verbatim record is made. In accordance with the Americans with Disabilities Act, persons needing special accommodations or an interpreter to participate in this proceeding should contact the City Clerk's office at 772-871-5157, at least seven days prior to the date of the hearing.

Copies of the assessment roll, showing the amount of the assessment to be imposed against each parcel of property, and the legal documentation relating to the assessment is available for inspection in the office of the City Clerk, located on the Third Floor of City Hall, 121 S.W. Port St. Lucie Blvd., Port St. Lucie, Florida.

The assessments will be collected on the non-ad valorem portion of the tax bill to be mailed by the St. Lucie County Tax Collector in November 2025. Failure to pay the assessment will cause a tax certificate to be issued against the property, which may result in a loss of title to your property. Based on a successful vote of the 12 Residential Street Lighting Areas to be approved with the September 23, 2024, Resolution, the estimated revenue generated to pay for the yearly street lighting of **those 12 areas** is approximately **\$8,944**. If you have any questions, please contact the City of Port St. Lucie City Attorney's Office at 772-871-5294, Monday through Friday between 8:00 a.m. and 5:00 p.m.



CITY OF PORT ST. LUCIE
 CITY CLERK'S OFFICE
 121 SW PORT ST. LUCIE BLVD.
 PORT ST. LUCIE, FL 34984-5099

NOTICE OF PUBLIC HEARING

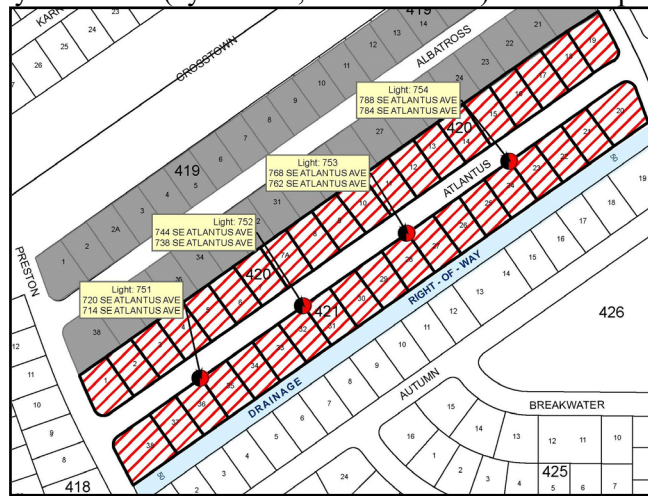
**NEW RESIDENTIAL STREET LIGHTING ASSESSMENT AREA FOR FISCAL YEAR 2024/2025
 CITY COUNCIL MEETING**

SEPTEMBER 23, 2024 AT 6:00 PM
 CITY HALL – COUNCIL CHAMBER
 121 SW PORT ST. LUCIE BOULEVARD
 PORT ST. LUCIE, FLORIDA

The lots listed below are in an area balloted and passed by a majority of the property owners returned ballots. The City contemplates levying an assessment estimated at \$26.00 per lot. Payment will be on a yearly basis and collected by the St. Lucie County Tax Collector. This assessment will be included in your November 2025 tax bill on the non-advalem portion of your tax bill. A description of the properties specially benefited (by section, block and lot) and a map showing the proposed location of the street lighting is as follows:

STREET LIGHTING ASSESSMENT AREA
 BOUNDARY #668
 SE ATLANTUS AVENUE – SECTION 03

- BLOCK 420 LOTS 1 Through 7
- BLOCK 420 LOTS 7A Through 19
- BLOCK 421 LOTS 20 Through 38



The public hearing will be held in the City Council Chambers at 6:00 p.m. on September 23, 2024, or as soon thereafter as the matter may be heard, located at the City of Port St. Lucie Municipal Complex (City Hall – Council Chamber), 121 S.W. Port St. Lucie Blvd., Port St. Lucie, Florida 34984 for receiving public comment on the proposed collection of the assessments. All affected property owners have a right to appear at the hearing and may file written objections with the Council in care of the City Clerk prior to the meeting. Written objections may also be filed with the City Clerk at the hearing any time before the adjournment of the hearing. If a person decides to appeal any decision made by the Council with respect to any matter considered at the hearing, such person will need a record of the proceedings and may need to arrange for a court reporter to ensure that a verbatim record is made. In accordance with the Americans with Disabilities Act, persons needing special accommodations or an interpreter to participate in this proceeding should contact the City Clerk's office at 772-871-5157, at least seven days prior to the date of the hearing.

Copies of the assessment roll, showing the amount of the assessment to be imposed against each parcel of property, and the legal documentation relating to the assessment is available for inspection in the office of the City Clerk, located on the Third Floor of City Hall, 121 S.W. Port St. Lucie Blvd., Port St. Lucie, Florida.

The assessments will be collected on the non-ad valorem portion of the tax bill to be mailed by the St. Lucie County Tax Collector in November 2025. Failure to pay the assessment will cause a tax certificate to be issued against the property, which may result in a loss of title to your property. Based on a successful vote of the 12 Residential Street Lighting Areas to be approved with the September 23, 2024, Resolution, the estimated revenue generated to pay for the yearly street lighting of **those 12 areas** is approximately **\$8,944**. If you have any questions, please contact the City of Port St. Lucie City Attorney's Office at 772-871-5294, Monday through Friday between 8:00 a.m. and 5:00 p.m.



CITY OF PORT ST. LUCIE
 CITY CLERK'S OFFICE
 121 SW PORT ST. LUCIE BLVD.
 PORT ST. LUCIE, FL 34984-5099

NOTICE OF PUBLIC HEARING

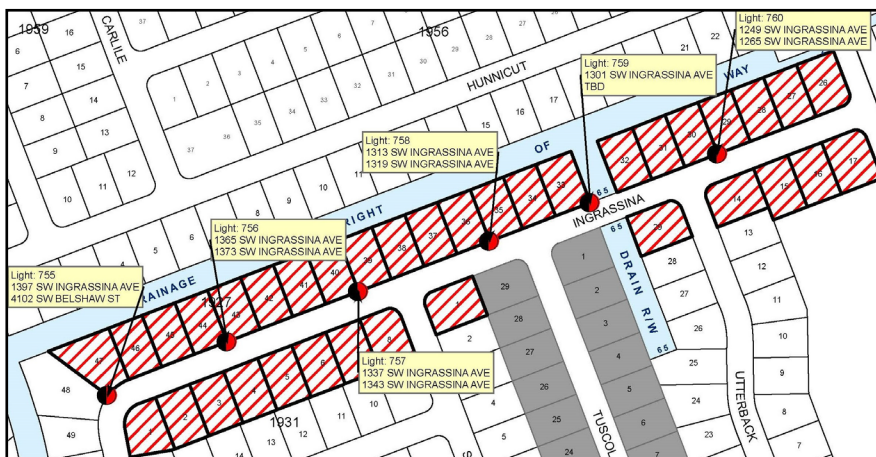
**NEW RESIDENTIAL STREET LIGHTING ASSESSMENT AREA FOR FISCAL YEAR 2024/2025
 CITY COUNCIL MEETING**

SEPTEMBER 23, 2024 AT 6:00 PM
 CITY HALL – COUNCIL CHAMBER
 121 SW PORT ST. LUCIE BOULEVARD
 PORT ST. LUCIE, FLORIDA

The lots listed below are in an area balloted and passed by a majority of the property owners returned ballots. The City contemplates levying an assessment estimated at \$26.00 per lot. Payment will be on a yearly basis and collected by the St. Lucie County Tax Collector. This assessment will be included in your November 2025 tax bill on the non-advalorem portion of your tax bill. A description of the properties specially benefited (by section, block and lot) and a map showing the proposed location of the street lighting is as follows:

**STREET LIGHTING ASSESSMENT AREA
 BOUNDARY #669
 SW INGRASSINA AVENUE – SECTION 19**

- BLOCK 1927 LOTS 26 Through 47
- BLOCK 1931 LOTS 1 Through 8
- BLOCK 1934 LOTS 14 Through 17
- BLOCK 1932 LOT 1
- BLOCK 1933 LOT 29



The public hearing will be held in the City Council Chambers at 6:00 p.m. on September 23, 2024, or as soon thereafter as the matter may be heard, located at the City of Port St. Lucie Municipal Complex (City Hall – Council Chamber), 121 S.W. Port St. Lucie Blvd., Port St. Lucie, Florida 34984 for receiving public comment on the proposed collection of the assessments. All affected property owners have a right to appear at the hearing and may file written objections with the Council in care of the City Clerk prior to the meeting. Written objections may also be filed with the City Clerk at the hearing any time before the adjournment of the hearing. If a person decides to appeal any decision made by the Council with respect to any matter considered at the hearing, such person will need a record of the proceedings and may need to arrange for a court reporter to ensure that a verbatim record is made. In accordance with the Americans with Disabilities Act, persons needing special accommodations or an interpreter to participate in this proceeding should contact the City Clerk's office at 772-871-5157, at least seven days prior to the date of the hearing.

Copies of the assessment roll, showing the amount of the assessment to be imposed against each parcel of property, and the legal documentation relating to the assessment is available for inspection in the office of the City Clerk, located on the Third Floor of City Hall, 121 S.W. Port St. Lucie Blvd., Port St. Lucie, Florida.

The assessments will be collected on the non-ad valorem portion of the tax bill to be mailed by the St. Lucie County Tax Collector in November 2025. Failure to pay the assessment will cause a tax certificate to be issued against the property, which may result in a loss of title to your property. Based on a successful vote of the 12 Residential Street Lighting Areas to be approved with the September 23, 2024, Resolution, the estimated revenue generated to pay for the yearly street lighting of **those 12 areas** is approximately **\$8,944**. If you have any questions, please contact the City of Port St. Lucie City Attorney's Office at 772-871-5294, Monday through Friday between 8:00 a.m. and 5:00 p.m.



CITY OF PORT ST. LUCIE
 CITY CLERK'S OFFICE
 121 SW PORT ST. LUCIE BLVD.
 PORT ST. LUCIE, FL 34984-5099

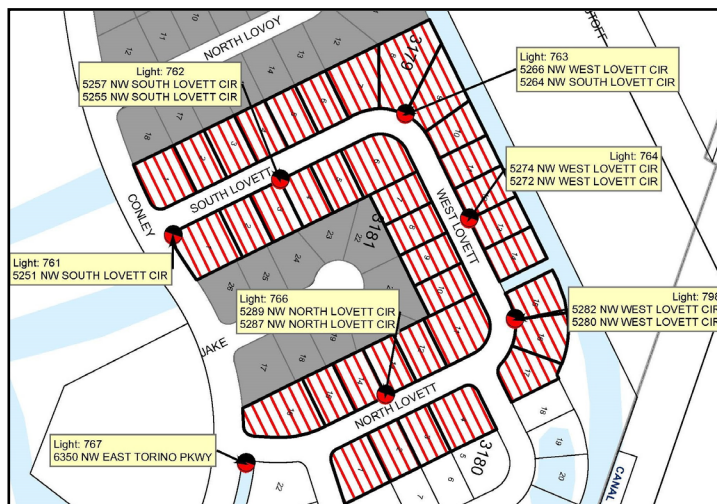
NOTICE OF PUBLIC HEARING
NEW RESIDENTIAL STREET LIGHTING ASSESSMENT AREA FOR FISCAL YEAR 2024/2025
CITY COUNCIL MEETING

SEPTEMBER 23, 2024 AT 6:00 PM
 CITY HALL – COUNCIL CHAMBER
 121 SW PORT ST. LUCIE BOULEVARD
 PORT ST. LUCIE, FLORIDA

The lots listed below are in an area balloted and passed by a majority of the property owners returned ballots. The City contemplates levying an assessment estimated at \$26.00 per lot. Payment will be on a yearly basis and collected by the St. Lucie County Tax Collector. This assessment will be included in your November 2025 tax bill on the non-advolorem portion of your tax bill. A description of the properties specially benefited (by section, block and lot) and a map showing the proposed location of the street lighting is as follows:

STREET LIGHTING ASSESSMENT AREA
BOUNDARY #670
NW NORTH LOVETT CIRCLE – SECTION 47

- BLOCK 3179 LOTS 1 Through 17
- BLOCK 3180 LOTS 1 Through 4
- BLOCK 3181 LOTS 1 Through 16



The public hearing will be held in the City Council Chambers at 6:00 p.m. on September 23, 2024, or as soon thereafter as the matter may be heard, located at the City of Port St. Lucie Municipal Complex (City Hall – Council Chamber), 121 S.W. Port St. Lucie Blvd., Port St. Lucie, Florida 34984 for receiving public comment on the proposed collection of the assessments. All affected property owners have a right to appear at the hearing and may file written objections with the Council in care of the City Clerk prior to the meeting. Written objections may also be filed with the City Clerk at the hearing any time before the adjournment of the hearing. If a person decides to appeal any decision made by the Council with respect to any matter considered at the hearing, such person will need a record of the proceedings and may need to arrange for a court reporter to ensure that a verbatim record is made. In accordance with the Americans with Disabilities Act, persons needing special accommodations or an interpreter to participate in this proceeding should contact the City Clerk's office at 772-871-5157, at least seven days prior to the date of the hearing.

Copies of the assessment roll, showing the amount of the assessment to be imposed against each parcel of property, and the legal documentation relating to the assessment is available for inspection in the office of the City Clerk, located on the Third Floor of City Hall, 121 S.W. Port St. Lucie Blvd., Port St. Lucie, Florida.

The assessments will be collected on the non-ad valorem portion of the tax bill to be mailed by the St. Lucie County Tax Collector in November 2025. Failure to pay the assessment will cause a tax certificate to be issued against the property, which may result in a loss of title to your property. Based on a successful vote of the 12 Residential Street Lighting Areas to be approved with the September 23, 2024, Resolution, the estimated revenue generated to pay for the yearly street lighting of **those 12 areas** is approximately **\$8,944**. If you have any questions, please contact the City of Port St. Lucie City Attorney's Office at 772-871-5294, Monday through Friday between 8:00 a.m. and 5:00 p.m.



CITY OF PORT ST. LUCIE
 CITY CLERK'S OFFICE
 121 SW PORT ST. LUCIE BLVD.
 PORT ST. LUCIE, FL 34984-5099

NOTICE OF PUBLIC HEARING
 NEW RESIDENTIAL STREET LIGHTING ASSESSMENT AREA FOR FISCAL YEAR 2024/2025
 CITY COUNCIL MEETING

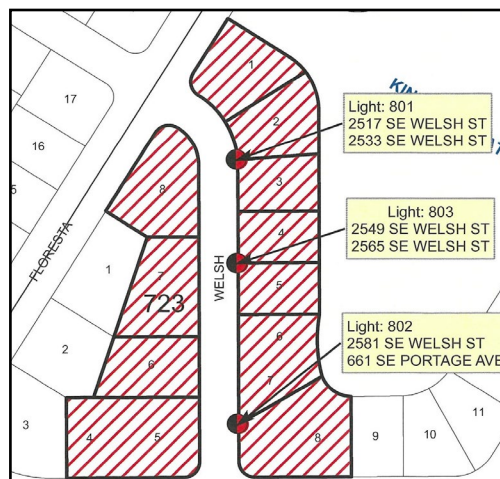
SEPTEMBER 23, 2024 AT 6:00 PM
 CITY HALL – COUNCIL CHAMBER
 121 SW PORT ST. LUCIE BOULEVARD
 PORT ST. LUCIE, FLORIDA

The lots listed below are in an area balloted and passed by a majority of the property owners returned ballots. The City contemplates levying an assessment estimated at \$26.00 per lot. Payment will be on a yearly basis and collected by the St. Lucie County Tax Collector. This assessment will be included in your November 2025 tax bill on the non-advolorem portion of your tax bill. A description of the properties specially benefited (by section, block and lot) and a map showing the proposed location of the street lighting is as follows:

STREET LIGHTING ASSESSMENT AREA
 BOUNDARY #672
 SE WELSH STREET – SECTION 18

BLOCK 723 LOTS 4 Through 8

BLOCK 792 LOTS 1 Through 8



The public hearing will be held in the City Council Chambers at 6:00 p.m. on September 23, 2024, or as soon thereafter as the matter may be heard, located at the City of Port St. Lucie Municipal Complex (City Hall – Council Chamber), 121 S.W. Port St. Lucie Blvd., Port St. Lucie, Florida 34984 for receiving public comment on the proposed collection of the assessments. All affected property owners have a right to appear at the hearing and may file written objections with the Council in care of the City Clerk prior to the meeting. Written objections may also be filed with the City Clerk at the hearing any time before the adjournment of the hearing. If a person decides to appeal any decision made by the Council with respect to any matter considered at the hearing, such person will need a record of the proceedings and may need to arrange for a court reporter to ensure that a verbatim record is made. In accordance with the Americans with Disabilities Act, persons needing special accommodations or an interpreter to participate in this proceeding should contact the City Clerk's office at 772-871-5157, at least seven days prior to the date of the hearing.

Copies of the assessment roll, showing the amount of the assessment to be imposed against each parcel of property, and the legal documentation relating to the assessment is available for inspection in the office of the City Clerk, located on the Third Floor of City Hall, 121 S.W. Port St. Lucie Blvd., Port St. Lucie, Florida.

The assessments will be collected on the non-ad valorem portion of the tax bill to be mailed by the St. Lucie County Tax Collector in November 2025. Failure to pay the assessment will cause a tax certificate to be issued against the property, which may result in a loss of title to your property. Based on a successful vote of the 12 Residential Street Lighting Areas to be approved with the September 23, 2024, Resolution, the estimated revenue generated to pay for the yearly street lighting of **those 12 areas** is approximately **\$8,944**. If you have any questions, please contact the City of Port St. Lucie City Attorney's Office at 772-871-5294, Monday through Friday between 8:00 a.m. and 5:00 p.m.



CITY OF PORT ST. LUCIE
 CITY CLERK'S OFFICE
 121 SW PORT ST. LUCIE BLVD.
 PORT ST. LUCIE, FL 34984-5099

NOTICE OF PUBLIC HEARING
NEW RESIDENTIAL STREET LIGHTING ASSESSMENT AREA FOR FISCAL YEAR 2024/2025
CITY COUNCIL MEETING

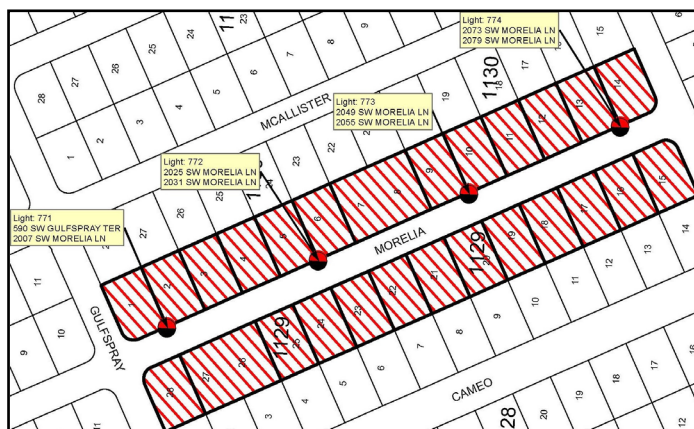
SEPTEMBER 23, 2024 AT 6:00 PM
 CITY HALL – COUNCIL CHAMBER
 121 SW PORT ST. LUCIE BOULEVARD
 PORT ST. LUCIE, FLORIDA

The lots listed below are in an area balloted and passed by a majority of the property owners returned ballots. The City contemplates levying an assessment estimated at \$26.00 per lot. Payment will be on a yearly basis and collected by the St. Lucie County Tax Collector. This assessment will be included in your November 2025 tax bill on the non-advalem portion of your tax bill. A description of the properties specially benefited (by section, block and lot) and a map showing the proposed location of the street lighting is as follows:

STREET LIGHTING ASSESSMENT AREA
 BOUNDARY #673
 SW MORELIA LANE – SECTION 09

BLOCK 1129 LOTS 15 Through 28

BLOCK 1130 LOTS 1 Through 14



The public hearing will be held in the City Council Chambers at 6:00 p.m. on September 23, 2024, or as soon thereafter as the matter may be heard, located at the City of Port St. Lucie Municipal Complex (City Hall – Council Chamber), 121 S.W. Port St. Lucie Blvd., Port St. Lucie, Florida 34984 for receiving public comment on the proposed collection of the assessments. All affected property owners have a right to appear at the hearing and may file written objections with the Council in care of the City Clerk prior to the meeting. Written objections may also be filed with the City Clerk at the hearing any time before the adjournment of the hearing. If a person decides to appeal any decision made by the Council with respect to any matter considered at the hearing, such person will need a record of the proceedings and may need to arrange for a court reporter to ensure that a verbatim record is made. In accordance with the Americans with Disabilities Act, persons needing special accommodations or an interpreter to participate in this proceeding should contact the City Clerk's office at 772-871-5157, at least seven days prior to the date of the hearing.

Copies of the assessment roll, showing the amount of the assessment to be imposed against each parcel of property, and the legal documentation relating to the assessment is available for inspection in the office of the City Clerk, located on the Third Floor of City Hall, 121 S.W. Port St. Lucie Blvd., Port St. Lucie, Florida.

The assessments will be collected on the non-ad valorem portion of the tax bill to be mailed by the St. Lucie County Tax Collector in November 2025. Failure to pay the assessment will cause a tax certificate to be issued against the property, which may result in a loss of title to your property. Based on a successful vote of the 12 Residential Street Lighting Areas to be approved with the September 23, 2024, Resolution, the estimated revenue generated to pay for the yearly street lighting of **those 12 areas** is approximately **\$8,944**. If you have any questions, please contact the City of Port St. Lucie City Attorney's Office at 772-871-5294, Monday through Friday between 8:00 a.m. and 5:00 p.m.

Sally Walsh, City Clerk

Legal Ad Published on date September 11, 2024



CITY OF PORT ST. LUCIE
 CITY CLERK'S OFFICE
 121 SW PORT ST. LUCIE BLVD.
 PORT ST. LUCIE, FL 34984-5099

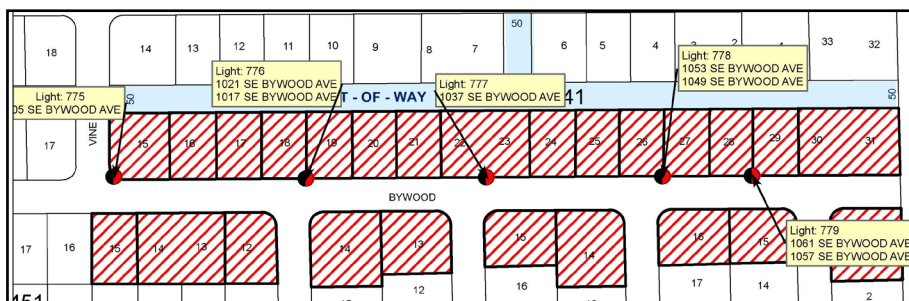
NOTICE OF PUBLIC HEARING
NEW RESIDENTIAL STREET LIGHTING ASSESSMENT AREA FOR FISCAL YEAR 2024/2025
CITY COUNCIL MEETING

SEPTEMBER 23, 2024 AT 6:00 PM
 CITY HALL – COUNCIL CHAMBER
 121 SW PORT ST. LUCIE BOULEVARD
 PORT ST. LUCIE, FLORIDA

The lots listed below are in an area balloted and passed by a majority of the property owners returned ballots. The City contemplates levying an assessment estimated at \$26.00 per lot. Payment will be on a yearly basis and collected by the St. Lucie County Tax Collector. This assessment will be included in your November 2025 tax bill on the non-advalem portion of your tax bill. A description of the properties specially benefited (by section, block and lot) and a map showing the proposed location of the street lighting is as follows:

STREET LIGHTING ASSESSMENT AREA
BOUNDARY #674
SE BYWOOD AVENUE – SECTION 03 & 10

| | | |
|-----------|---------|------------|
| BLOCK 441 | LOTS 15 | Through 31 |
| BLOCK 451 | LOTS 12 | Through 15 |
| BLOCK 454 | LOTS 13 | And 14 |
| BLOCK 455 | LOTS 14 | And 15 |
| BLOCK 456 | LOTS 15 | And 16 |
| BLOCK 457 | LOT 1 | |



The public hearing will be held in the City Council Chambers at 6:00 p.m. on September 23, 2024, or as soon thereafter as the matter may be heard, located at the City of Port St. Lucie Municipal Complex (City Hall – Council Chamber), 121 S.W. Port St. Lucie Blvd., Port St. Lucie, Florida 34984 for receiving public comment on the proposed collection of the assessments. All affected property owners have a right to appear at the hearing and may file written objections with the Council in care of the City Clerk prior to the meeting. Written objections may also be filed with the City Clerk at the hearing any time before the adjournment of the hearing. If a person decides to appeal any decision made by the Council with respect to any matter considered at the hearing, such person will need a record of the proceedings and may need to arrange for a court reporter to ensure that a verbatim record is made. In accordance with the Americans with Disabilities Act, persons needing special accommodations or an interpreter to participate in this proceeding should contact the City Clerk's office at 772-871-5157, at least seven days prior to the date of the hearing.

Copies of the assessment roll, showing the amount of the assessment to be imposed against each parcel of property, and the legal documentation relating to the assessment is available for inspection in the office of the City Clerk, located on the Third Floor of City Hall, 121 S.W. Port St. Lucie Blvd., Port St. Lucie, Florida.

The assessments will be collected on the non-ad valorem portion of the tax bill to be mailed by the St. Lucie County Tax Collector in November 2025. Failure to pay the assessment will cause a tax certificate to be issued against the property, which may result in a loss of title to your property. Based on a successful vote of the 12 Residential Street Lighting Areas to be approved with the September 23, 2024, Resolution, the estimated revenue generated to pay for the yearly street lighting of **those 12 areas** is approximately **\$8,944**. If you have any questions, please contact the City of Port St. Lucie City Attorney's Office at 772-871-5294, Monday through Friday between 8:00 a.m. and 5:00 p.m.

Sally Walsh, City Clerk

Legal Ad Published on date September 11, 2024



CITY OF PORT ST. LUCIE
 CITY CLERK'S OFFICE
 121 SW PORT ST. LUCIE BLVD.
 PORT ST. LUCIE, FL 34984-5099

NOTICE OF PUBLIC HEARING

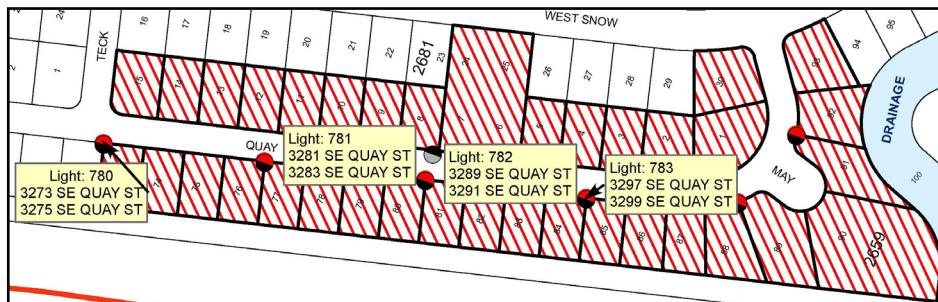
**NEW RESIDENTIAL STREET LIGHTING ASSESSMENT AREA FOR FISCAL YEAR 2024/2025
 CITY COUNCIL MEETING**

SEPTEMBER 23, 2024 AT 6:00 PM
 CITY HALL – COUNCIL CHAMBER
 121 SW PORT ST. LUCIE BOULEVARD
 PORT ST. LUCIE, FLORIDA

The lots listed below are in an area balloted and passed by a majority of the property owners returned ballots. The City contemplates levying an assessment estimated at \$26.00 per lot. Payment will be on a yearly basis and collected by the St. Lucie County Tax Collector. This assessment will be included in your November 2025 tax bill on the non-advalorem portion of your tax bill. A description of the properties specially benefited (by section, block and lot) and a map showing the proposed location of the street lighting is as follows:

**STREET LIGHTING ASSESSMENT AREA
 BOUNDARY #675
 SE QUAY STREET – SECTION 39**

- BLOCK 2659 LOTS 73 Through 93
- BLOCK 2681 LOTS 1 Through 15
- BLOCK 2681 LOTS 24 And 25
- BLOCK 2681 LOT 30



The public hearing will be held in the City Council Chambers at 6:00 p.m. on September 23, 2024, or as soon thereafter as the matter may be heard, located at the City of Port St. Lucie Municipal Complex (City Hall – Council Chamber), 121 S.W. Port St. Lucie Blvd., Port St. Lucie, Florida 34984 for receiving public comment on the proposed collection of the assessments. All affected property owners have a right to appear at the hearing and may file written objections with the Council in care of the City Clerk prior to the meeting. Written objections may also be filed with the City Clerk at the hearing any time before the adjournment of the hearing. If a person decides to appeal any decision made by the Council with respect to any matter considered at the hearing, such person will need a record of the proceedings and may need to arrange for a court reporter to ensure that a verbatim record is made. In accordance with the Americans with Disabilities Act, persons needing special accommodations or an interpreter to participate in this proceeding should contact the City Clerk's office at 772-871-5157, at least seven days prior to the date of the hearing.

Copies of the assessment roll, showing the amount of the assessment to be imposed against each parcel of property, and the legal documentation relating to the assessment is available for inspection in the office of the City Clerk, located on the Third Floor of City Hall, 121 S.W. Port St. Lucie Blvd., Port St. Lucie, Florida.

The assessments will be collected on the non-ad valorem portion of the tax bill to be mailed by the St. Lucie County Tax Collector in November 2025. Failure to pay the assessment will cause a tax certificate to be issued against the property, which may result in a loss of title to your property. Based on a successful vote of the 12 Residential Street Lighting Areas to be approved with the September 23, 2024, Resolution, the estimated revenue generated to pay for the yearly street lighting of **those 12 areas** is approximately **\$8,944**. If you have any questions, please contact the City of Port St. Lucie City Attorney's Office at 772-871-5294, Monday through Friday between 8:00 a.m. and 5:00 p.m.



CITY OF PORT ST. LUCIE
CITY CLERK'S OFFICE
121 SW PORT ST. LUCIE BLVD.
PORT ST. LUCIE, FL 34984-5099

NOTICE OF PUBLIC HEARING
NEW RESIDENTIAL STREET LIGHTING ASSESSMENT AREA FOR FISCAL YEAR 2024/2025
CITY COUNCIL MEETING

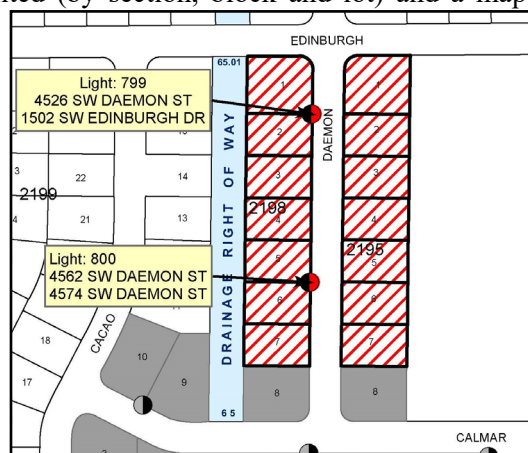
SEPTEMBER 23, 2024 AT 6:00 PM
CITY HALL – COUNCIL CHAMBER
121 SW PORT ST. LUCIE BOULEVARD
PORT ST. LUCIE, FLORIDA

The lots listed below are in an area balloted and passed by a majority of the property owners returned ballots. The City contemplates levying an assessment estimated at \$26.00 per lot. Payment will be on a yearly basis and collected by the St. Lucie County Tax Collector. This assessment will be included in your November 2025 tax bill on the non-advalem portion of your tax bill. A description of the properties specially benefited (by section, block and lot) and a map showing the proposed location of the street lighting is as follows:

STREET LIGHTING ASSESSMENT AREA
BOUNDARY #678
SW DAEMON STREET – SECTION 33

BLOCK 2195 LOTS 1 Through 7

BLOCK 2198 LOTS 1 Through 7



The public hearing will be held in the City Council Chambers at 6:00 p.m. on September 23, 2024, or as soon thereafter as the matter may be heard, located at the City of Port St. Lucie Municipal Complex (City Hall – Council Chamber), 121 S.W. Port St. Lucie Blvd., Port St. Lucie, Florida 34984 for receiving public comment on the proposed collection of the assessments. All affected property owners have a right to appear at the hearing and may file written objections with the Council in care of the City Clerk prior to the meeting. Written objections may also be filed with the City Clerk at the hearing any time before the adjournment of the hearing. If a person decides to appeal any decision made by the Council with respect to any matter considered at the hearing, such person will need a record of the proceedings and may need to arrange for a court reporter to ensure that a verbatim record is made. In accordance with the Americans with Disabilities Act, persons needing special accommodations or an interpreter to participate in this proceeding should contact the City Clerk's office at 772-871-5157, at least seven days prior to the date of the hearing.

Copies of the assessment roll, showing the amount of the assessment to be imposed against each parcel of property, and the legal documentation relating to the assessment is available for inspection in the office of the City Clerk, located on the Third Floor of City Hall, 121 S.W. Port St. Lucie Blvd., Port St. Lucie, Florida.

The assessments will be collected on the non-ad valorem portion of the tax bill to be mailed by the St. Lucie County Tax Collector in November 2025. Failure to pay the assessment will cause a tax certificate to be issued against the property, which may result in a loss of title to your property. Based on a successful vote of the 12 Residential Street Lighting Areas to be approved with the September 23, 2024, Resolution, the estimated revenue generated to pay for the yearly street lighting of **those 12 areas** is approximately **\$8,944**. If you have any questions, please contact the City of Port St. Lucie City Attorney's Office at 772-871-5294, Monday through Friday between 8:00 a.m. and 5:00 p.m.

Sally Walsh, City Clerk

Legal Ad Published on date September 11, 2024



CITY OF PORT ST. LUCIE
 CITY CLERK'S OFFICE
 121 SW PORT ST. LUCIE BLVD.
 PORT ST. LUCIE, FL 34984-5099

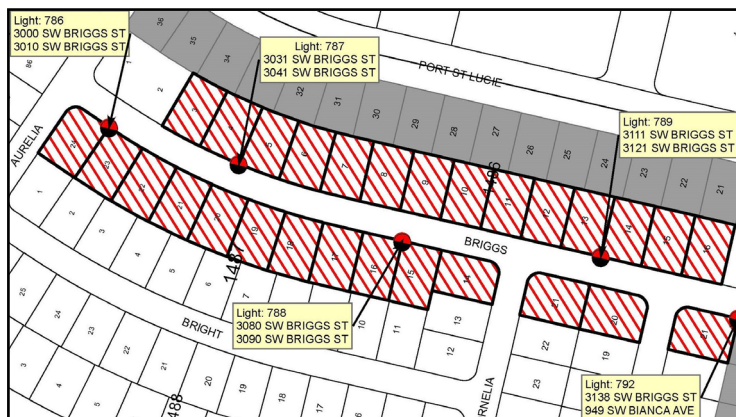
NOTICE OF PUBLIC HEARING
NEW RESIDENTIAL STREET LIGHTING ASSESSMENT AREA FOR FISCAL YEAR 2024/2025
CITY COUNCIL MEETING

SEPTEMBER 23, 2024 AT 6:00 PM
 CITY HALL – COUNCIL CHAMBER
 121 SW PORT ST. LUCIE BOULEVARD
 PORT ST. LUCIE, FLORIDA

The lots listed below are in an area balloted and passed by a majority of the property owners returned ballots. The City contemplates levying an assessment estimated at \$26.00 per lot. Payment will be on a yearly basis and collected by the St. Lucie County Tax Collector. This assessment will be included in your November 2025 tax bill on the non-advalorem portion of your tax bill. A description of the properties specially benefited (by section, block and lot) and a map showing the proposed location of the street lighting is as follows:

STREET LIGHTING ASSESSMENT AREA
BOUNDARY #681
SW BRIGGS STREET – SECTION 16

- BLOCK 1484 LOT 21
- BLOCK 1485 LOTS 20 And 21
- BLOCK 1486 LOTS 3 Through 16
- BLOCK 1487 LOTS 14 Through 24



The public hearing will be held in the City Council Chambers at 6:00 p.m. on September 23, 2024, or as soon thereafter as the matter may be heard, located at the City of Port St. Lucie Municipal Complex (City Hall – Council Chamber), 121 S.W. Port St. Lucie Blvd., Port St. Lucie, Florida 34984 for receiving public comment on the proposed collection of the assessments. All affected property owners have a right to appear at the hearing and may file written objections with the Council in care of the City Clerk prior to the meeting. Written objections may also be filed with the City Clerk at the hearing any time before the adjournment of the hearing. If a person decides to appeal any decision made by the Council with respect to any matter considered at the hearing, such person will need a record of the proceedings and may need to arrange for a court reporter to ensure that a verbatim record is made. In accordance with the Americans with Disabilities Act, persons needing special accommodations or an interpreter to participate in this proceeding should contact the City Clerk's office at 772-871-5157, at least seven days prior to the date of the hearing.

Copies of the assessment roll, showing the amount of the assessment to be imposed against each parcel of property, and the legal documentation relating to the assessment is available for inspection in the office of the City Clerk, located on the Third Floor of City Hall, 121 S.W. Port St. Lucie Blvd., Port St. Lucie, Florida.

The assessments will be collected on the non-ad valorem portion of the tax bill to be mailed by the St. Lucie County Tax Collector in November 2025. Failure to pay the assessment will cause a tax certificate to be issued against the property, which may result in a loss of title to your property. Based on a successful vote of the 12 Residential Street Lighting Areas to be approved with the September 23, 2024, Resolution, the estimated revenue generated to pay for the yearly street lighting of **those 12 areas** is approximately **\$8,944**. If you have any questions, please contact the City of Port St. Lucie City Attorney's Office at 772-871-5294, Monday through Friday between 8:00 a.m. and 5:00 p.m.



CITY OF PORT ST. LUCIE
 CITY CLERK'S OFFICE
 121 SW PORT ST. LUCIE BLVD.
 PORT ST. LUCIE, FL 34984-5099

NOTICE OF PUBLIC HEARING

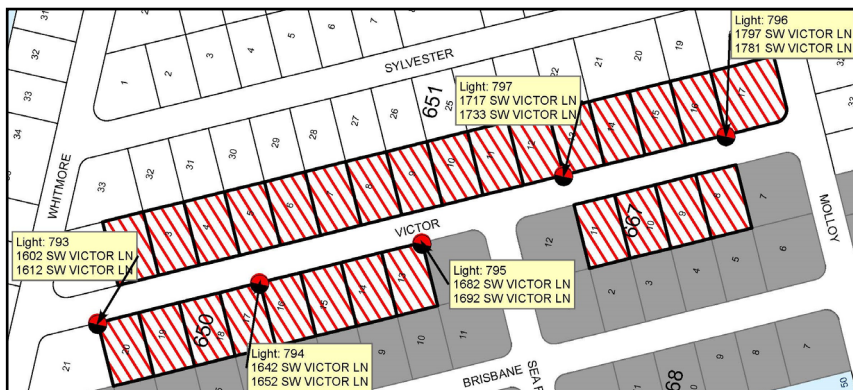
**NEW RESIDENTIAL STREET LIGHTING ASSESSMENT AREA FOR FISCAL YEAR 2024/2025
 CITY COUNCIL MEETING**

SEPTEMBER 23, 2024 AT 6:00 PM
 CITY HALL – COUNCIL CHAMBER
 121 SW PORT ST. LUCIE BOULEVARD
 PORT ST. LUCIE, FLORIDA

The lots listed below are in an area balloted and passed by a majority of the property owners returned ballots. The City contemplates levying an assessment estimated at \$26.00 per lot. Payment will be on a yearly basis and collected by the St. Lucie County Tax Collector. This assessment will be included in your November 2025 tax bill on the non-advalorem portion of your tax bill. A description of the properties specially benefited (by section, block and lot) and a map showing the proposed location of the street lighting is as follows:

**STREET LIGHTING ASSESSMENT AREA
 BOUNDARY #682
 SW VICTOR LANE – SECTION 13**

| | | | |
|-----------|---------|---------|----|
| BLOCK 650 | LOTS 13 | Through | 20 |
| BLOCK 651 | LOTS 2 | Through | 17 |
| BLOCK 667 | LOTS 8 | Through | 11 |



The public hearing will be held in the City Council Chambers at 6:00 p.m. on September 23, 2024, or as soon thereafter as the matter may be heard, located at the City of Port St. Lucie Municipal Complex (City Hall – Council Chamber), 121 S.W. Port St. Lucie Blvd., Port St. Lucie, Florida 34984 for receiving public comment on the proposed collection of the assessments. All affected property owners have a right to appear at the hearing and may file written objections with the Council in care of the City Clerk prior to the meeting. Written objections may also be filed with the City Clerk at the hearing any time before the adjournment of the hearing. If a person decides to appeal any decision made by the Council with respect to any matter considered at the hearing, such person will need a record of the proceedings and may need to arrange for a court reporter to ensure that a verbatim record is made. In accordance with the Americans with Disabilities Act, persons needing special accommodations or an interpreter to participate in this proceeding should contact the City Clerk's office at 772-871-5157, at least seven days prior to the date of the hearing.

Copies of the assessment roll, showing the amount of the assessment to be imposed against each parcel of property, and the legal documentation relating to the assessment is available for inspection in the office of the City Clerk, located on the Third Floor of City Hall, 121 S.W. Port St. Lucie Blvd., Port St. Lucie, Florida.

The assessments will be collected on the non-ad valorem portion of the tax bill to be mailed by the St. Lucie County Tax Collector in November 2025. Failure to pay the assessment will cause a tax certificate to be issued against the property, which may result in a loss of title to your property. Based on a successful vote of the 12 Residential Street Lighting Areas to be approved with the September 23, 2024, Resolution, the estimated revenue generated to pay for the yearly street lighting of **those 12 areas** is approximately **\$8,944**. If you have any questions, please contact the City of Port St. Lucie City Attorney's Office at 772-871-5294, Monday through Friday between 8:00 a.m. and 5:00 p.m.