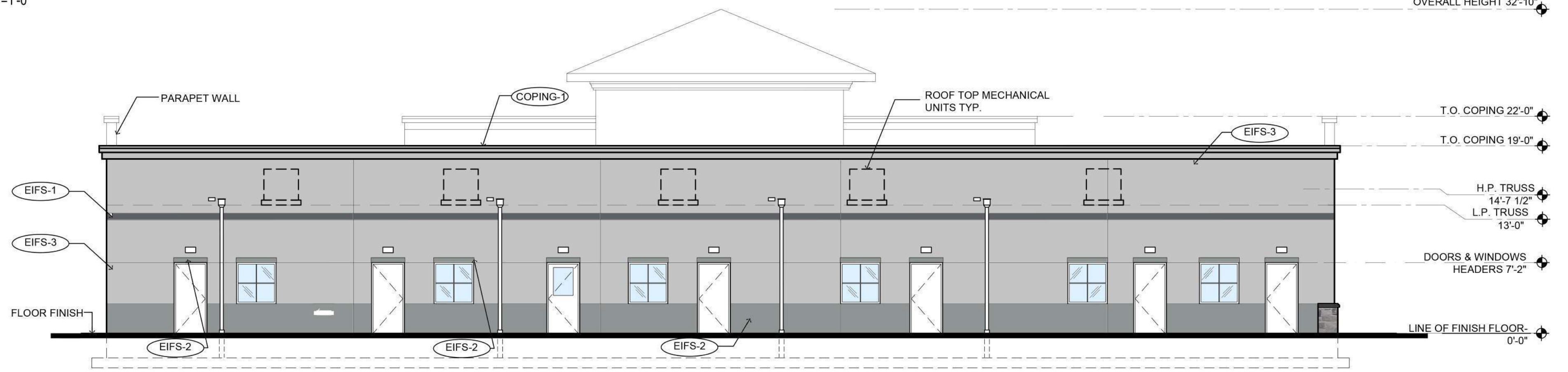
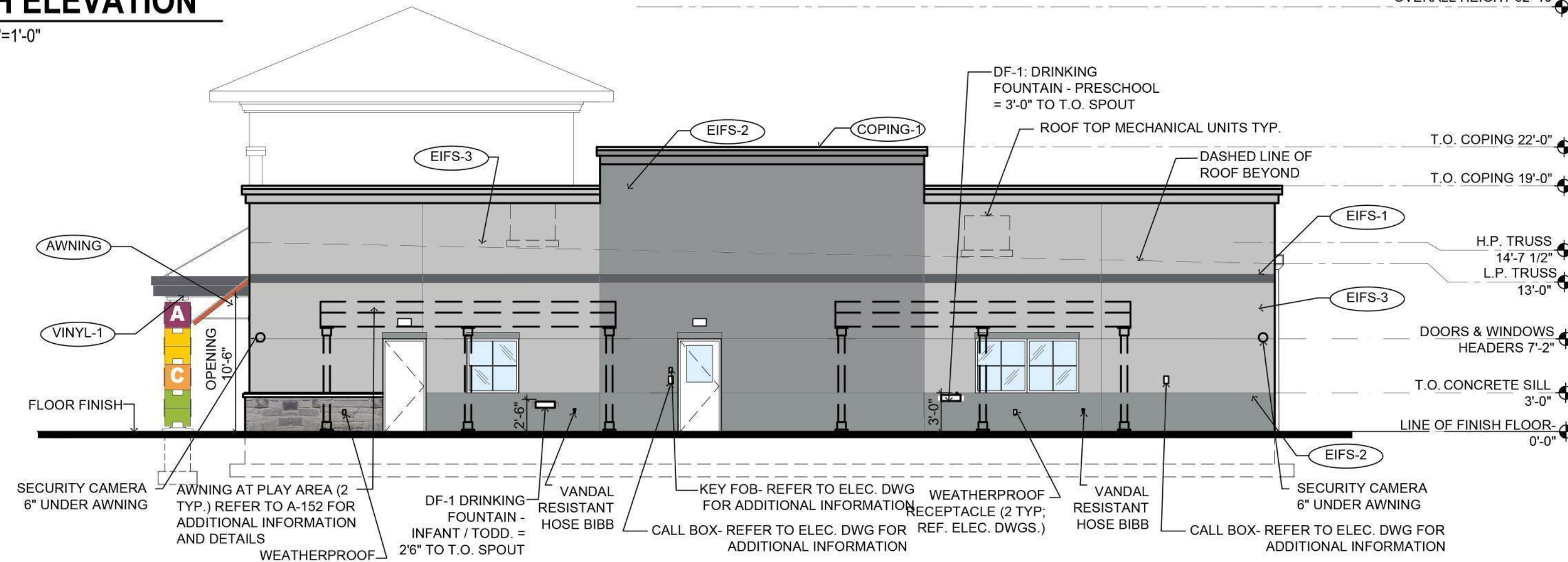


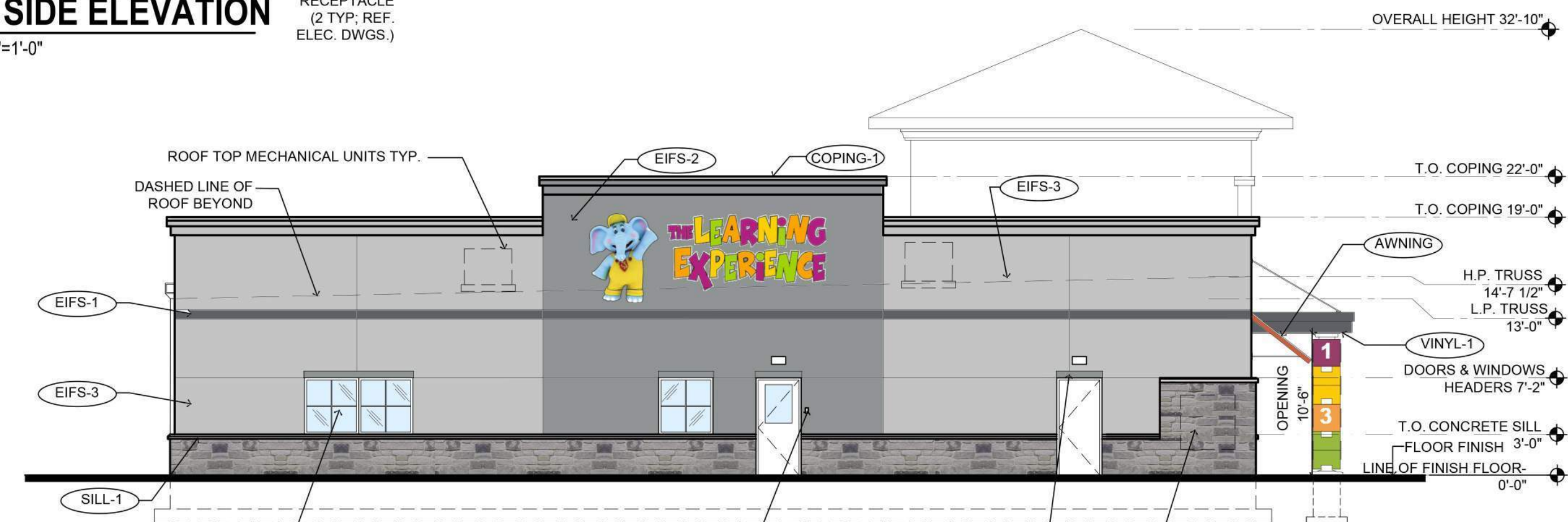
**1 NORTH ELEVATION**  
SCALE: 1/8"=1'-0"



**2 SOUTH ELEVATION**  
SCALE: 1/8"=1'-0"



**3 WEST SIDE ELEVATION**  
SCALE: 1/8"=1'-0"



**4 EAST SIDE ELEVATION**  
SCALE: 1/8"=1'-0"



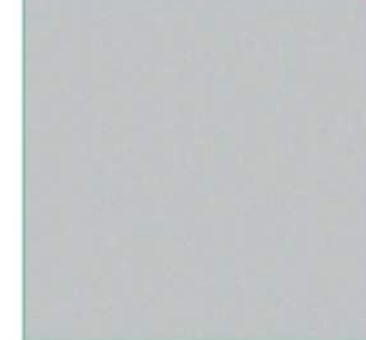
ROOF-1: BRAVA SPANISH BARREL ROOF TILES TERRA COTTA



QUARRY MILL COLUMBIA CLASSIC GREY TUMBLED ASHLAR STYLE, STONE VENEER



EIFS-1: DRYVIT / SAND PEBBLE FINISH COLOR: WEB GRAY SW7075

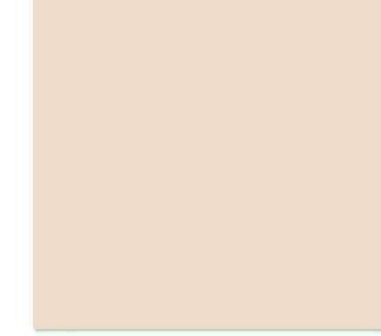


EIFS-3: DRYVIT / SAND PEBBLE FINISH COLOR: GRAY SCREEN SW7071

1. CONTRACTOR SHALL SUPERVISE AND DIRECT THE WORK USING THE CONTRACTORS BEST SKILL AND ATTENTION. THE CONTRACTOR SHALL BE SOLELY RESPONSIBLE AND HAVE CONTROL OVER CONSTRUCTION MEANS, METHODS, TECHNIQUES, SEQUENCE, AND JOB SITE SAFETY.  
2. GC MUST PROVIDE & INSTALL ALL PRODUCTS PER PLANS. ONLY SUBSTITUTED PRODUCTS NEED TO BE SUBMITTED TO THE ARCHITECT FOR APPROVAL. UNAPPROVED SUBSTITUTIONS WILL BE REPLACED AT THE EXPENSE OF THE GC.  
3. VERBAL REPRESENTATION HAS NO VALUE AND ALL REQUESTS TO CHANGE ANY PRODUCTS OR SPECIFICATIONS PER PLANS, MUST BE SUBMITTED IN WRITING TO THE ARCHITECT & THE FOR APPROVAL.



EIFS-2: DRYVIT / SAND PEBBLE FINISH COLOR: AFRICAN GRAY SW9162



EIFS-4: DRYVIT SAND PEBBLE FINISH COLOR: PEARL 455



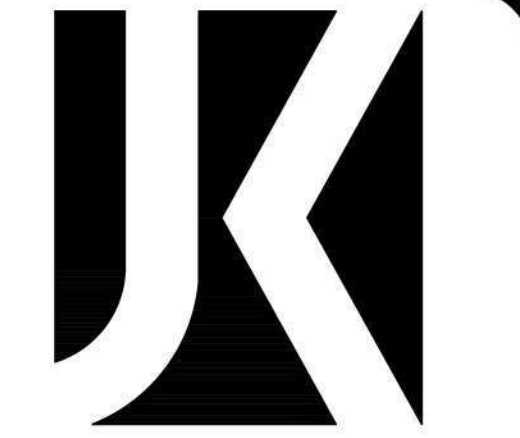
FABRAL (OR EQUAL) BREAK METAL DARK BRONZE

GENERAL NOTES:  
1. ELEVATION DESIGN AND COLORS MAY NOT BE MODIFIED WITHOUT APPROVAL FROM THE CITY.  
2. NO MECHANICAL EQUIPMENT ON THE ROOF SHALL BE VISIBLE ABOVE THE PARAPET WALL. PARAPET HEIGHT MINIMUM HEIGHT IS 4'-5"

REQUIRED ARCHITECTURAL ELEMENTS:  
1. 5% STACKED STONE ON FRONT BUILDING FACADE.  
2. BAHAMA SHUTTERS  
3. CANOPY/AWNING AT MAIN ENTRANCE.  
4. EXPRESSION LINES  
5. RAISED CORNICE OVER DOORS/WINDOWS.  
6. STONE/CONCRETE PAVERS

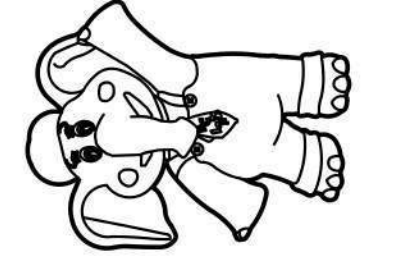
EXTERIOR MATERIAL SCHEDULE			
LABEL	MANUFACTURER	SIZE / TYPE	FINISH / COLOR
STOREFRONT	KAWNEER	TRIFAB 451T / 350 PER DOOR SCHEDULE	BONE WHITE
DOOR	-	PER DOOR SCHEDULE	FACTORY PRIMED
FIXED WINDOW	PLY GEM	SILVER LINE V1 SERIES PER WINDOW SCHEDULE	WHITE
STONE-1	QUARRY MILL	STONE VENEER	COLUMBIA CLASSIC GREY TUMBLED ASHLAR STYLE
SILL-1	MODERN PRECAST	3 3/4"x6"W W/ 2" FLAT W/ 1/4" DRIP EDGE	REGULAR (LIGHT GREY)
EIFS-1	DRYVIT	-	SAND PEBBLE FINISH COLOR: WEB GRAY SW7075
EIFS-2	DRYVIT	-	SAND PEBBLE FINISH COLOR: AFRICAN GRAY SW9162
EIFS-3	DRYVIT	-	SAND PEBBLE FINISH COLOR: GRAY SCREEN SW7071
EIFS-4	DRYVIT	-	SAND PEBBLE FINISH COLOR: CONFIDENT YELLOW SW6911
ROOF-1	BRAVA	SPANISH TILE	TERRACOTTA
GUTTER-1	-	6" ALUMINUM TYPE 'K' W/ LEAF SCREEN AND 6" LEADERS	MATCH FRIEZE BOARD
VINYL-1	ROYAL BUILDING PRODUCTS	COLORSCAPES TRIPLE 4 PERFORATED SOFFIT NOM. THICKNESS 0.042"	WHITE (REF. NOTE 2 BELOW)
BAHAMA SHUTTERS-			BROWN
COPING-1	FABRAL (OR EQUAL)	BREAK METAL	DARK BRONZE
KNOX-1	KNOX BOX	3200 SERIES W/ RECESSED MOUNT FLANGE, HINGE DOOR, & TAMPER SWITCH	DARK BRONZE (REF. NOTE 2 BELOW)

FINISH SCHEDULE NOTES:  
1. G.C. SHALL VERIFY KNOX BOX MODEL(S) AND LOCATION(S) WITH AUTHORITY HAVING JURISDICTION PRIOR TO ORDERING AND INSTALLATION.  
2. G.C. SHALL ENSURE ALL EXTERIOR FINISHES ARE INSTALLED AND FINISHED IN COMPLIANCE WITH MANUFACTURERS' WARRANTY REQUIREMENTS.



**Jarmel Kizel**  
ARCHITECTS AND ENGINEERS INC.  
42 OKNER PARKWAY  
LIVINGSTON, NEW JERSEY 07039  
TEL: 973-994-9669  
FAX: 973-994-4069  
www.jarmelkizel.com  
Architecture  
Engineering  
Interior Design  
Implementation Services

THE LEARNING EXPERIENCE  
ACADEMY OF EARLY EDUCATION  
SW COMMERCE CENTER DRIVE  
PORT ST. LUCIE, FLORIDA



ISSUE

NO.	DATE	DESCRIPTION	INT.
1.	12/28/23	FOR PLANNING	CS

REVISION

NO.	DATE	DESCRIPTION	INT.

PROFESSIONAL CERTIFICATION

MATTHEW B. JARMEI, AIA, MBA  
LICENSE NUMBER: AR98965

Project Number: TLEFL23-261  
Scale: 1/8"=1'-0"  
Drawn By: CS  
Approved By: MBJ

PROPOSED EXTERIOR ELEVATIONS

Drawing Number: SA-1.2

SA-1.2