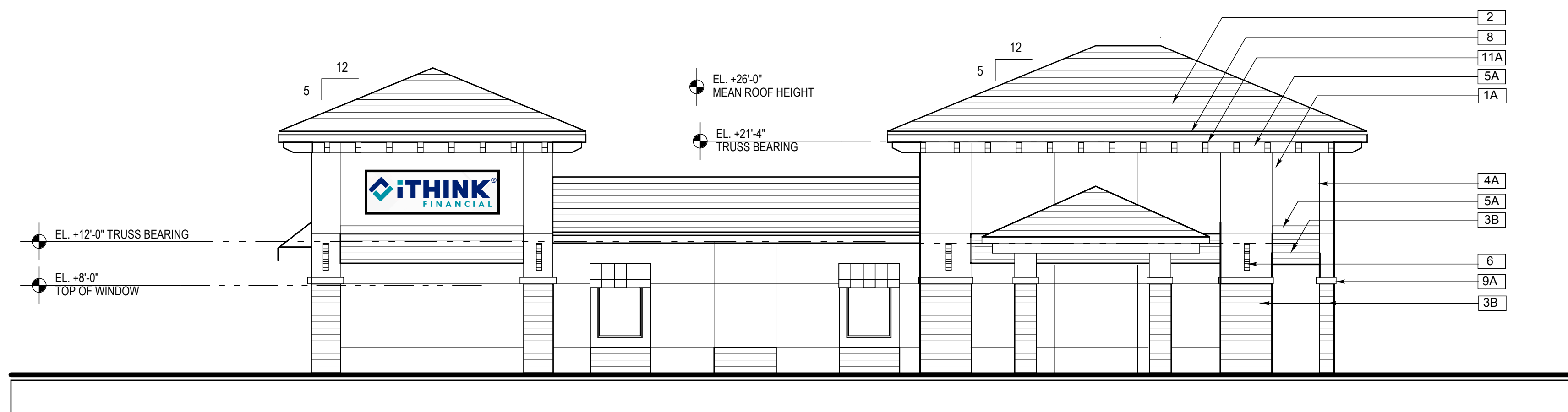
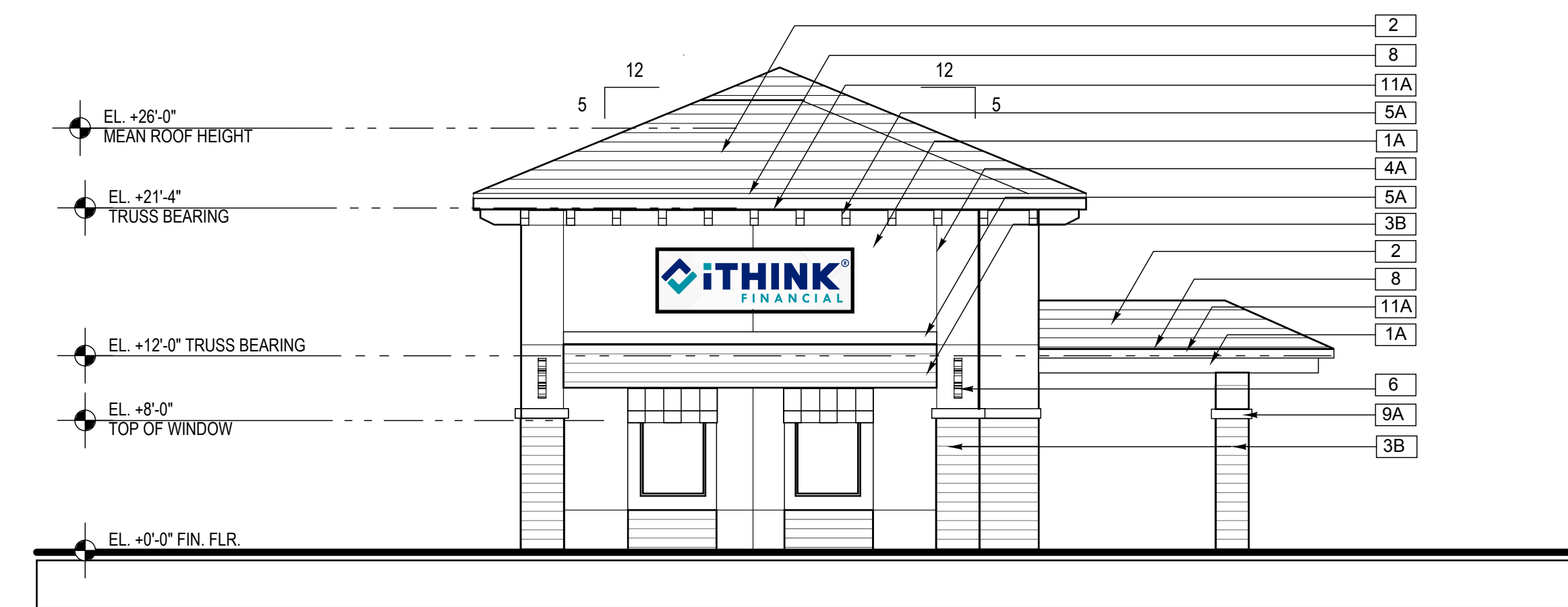


BUILDING DESIGN STANDARDS		
ITEM	PROVIDED	COMMENT
HORIZONTAL / VERTICAL ARTICULATION	PROVIDED	5' MIN. HORIZONTAL, 2' MIN. VERTICAL
PEAKED ROOF ELEMENT	PROVIDED	100% OF FAÇADE - CORNICE ELEMENTS
CORNICE ELEMENTS	PROVIDED	RAFTER TAILS / MOLDING
EAVES	PROVIDED	36" OVERHANG PROVIDED
ARCHITECTURAL ELEMENTS		
a. HORIZONTAL WOOD LOOK LAP SIDING	PROVIDED	100% ALL FAÇADES
b. CANOPY / AWNING	PROVIDED	CANVAS CANOPIES PROVIDED OVER TENANT ENTRANCES
c. SQUARE COLUMNS	PROVIDED	SQUARE COLUMN - A VERTICAL SUPPORTING MEMBER WITH A SQUARE OR RECTANGULAR SHAPED SHAFT.
e. ARCADE	PROVIDED	PROVIDED AT CENTER ENTRY FEATURE
f. DISPLAY WINDOWS	PROVIDED	AL/GL STOREFRONT DISPLAY WINDOWS PROVIDED AT EA. TENANT BAY
g. STONE PAVERS	PROVIDED	SEE SITE PLAN FOR LOCATION AND QUANTITY

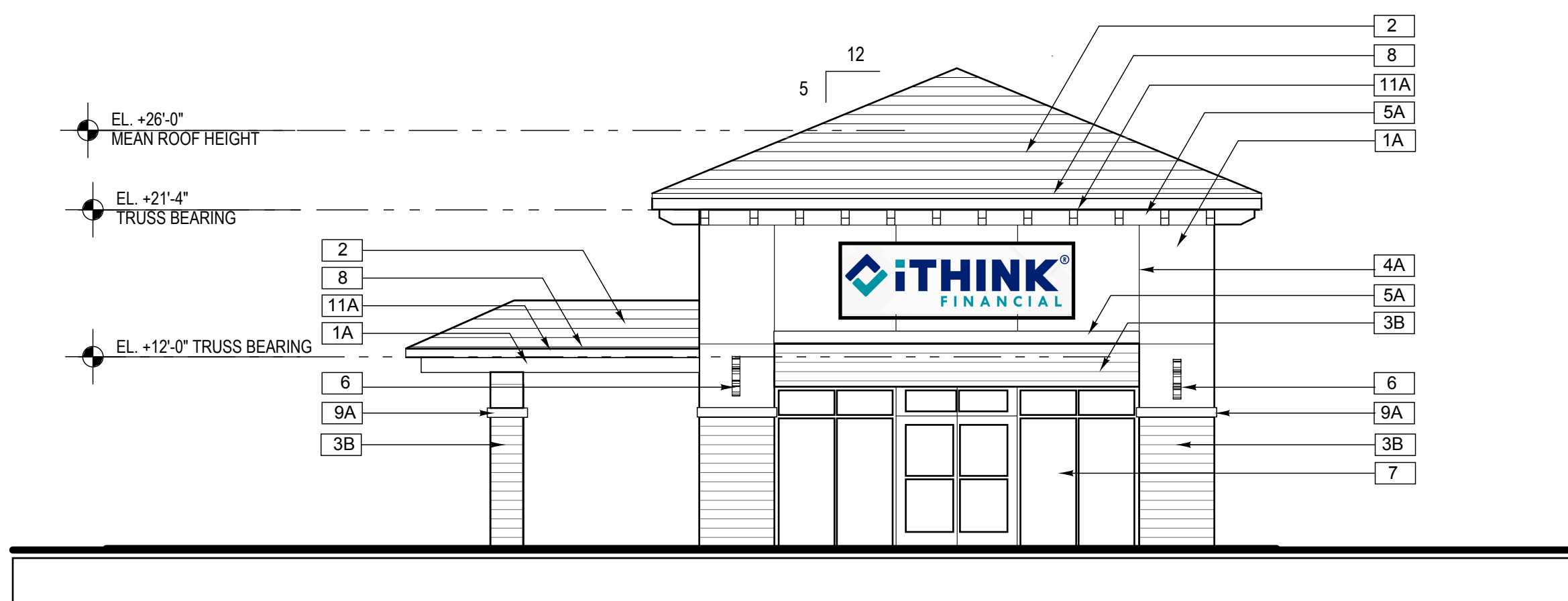
MATERIAL SCHEDULE #		
MK	Material	Finish
1	CEMENT PLASTER	LIGHT KNOCK-DOWN FINISH - PAINT
2	FLAT CEMENT ROOF TILES	CHARCOAL
3	SIMULATED LAP SIDING	SMOOTH FINISH - PAINT
4	DECORATIVE SCORE LINES	PVC SCREED - PAINT
5	E.I.F.S. ON SHAPED FOAM	SMOOTH FINISH - PAINT
6	ARCHITECTURAL LIGHT FIXTURE	BLACK FINISH
7	ALUM & GLASS STOREFRONT	DARK BRONZE FRAME, TINTED GLASS
8	METAL	PRE-FINISHED WHITE
9	CEMENT PLASTER BAND	SMOOTH FINISH - PAINT
10	FABRIC AWNING (SUNBRELLA)	BLACK / WHITE FABRIC W/ ALUM. PAINTED FRAME
11	WOOD	PAINT
12		
13		
A	SHERWIN WILLIAMS	SW 7005 PURE WHITE
B	SHERWIN WILLIAMS	SW 7004 SNOWBOUND
C		



○ SIDE ELEVATION (SOUTH)  
1/8" = 1'-0"



○ REAR ELEVATION (WEST)  
1/8" = 1'-0"



○ iTHINK FRONT ELEVATION (EAST)  
1/8" = 1'-0"



○ SIDE ELEVATION (NORTH)  
1/8" = 1'-0"

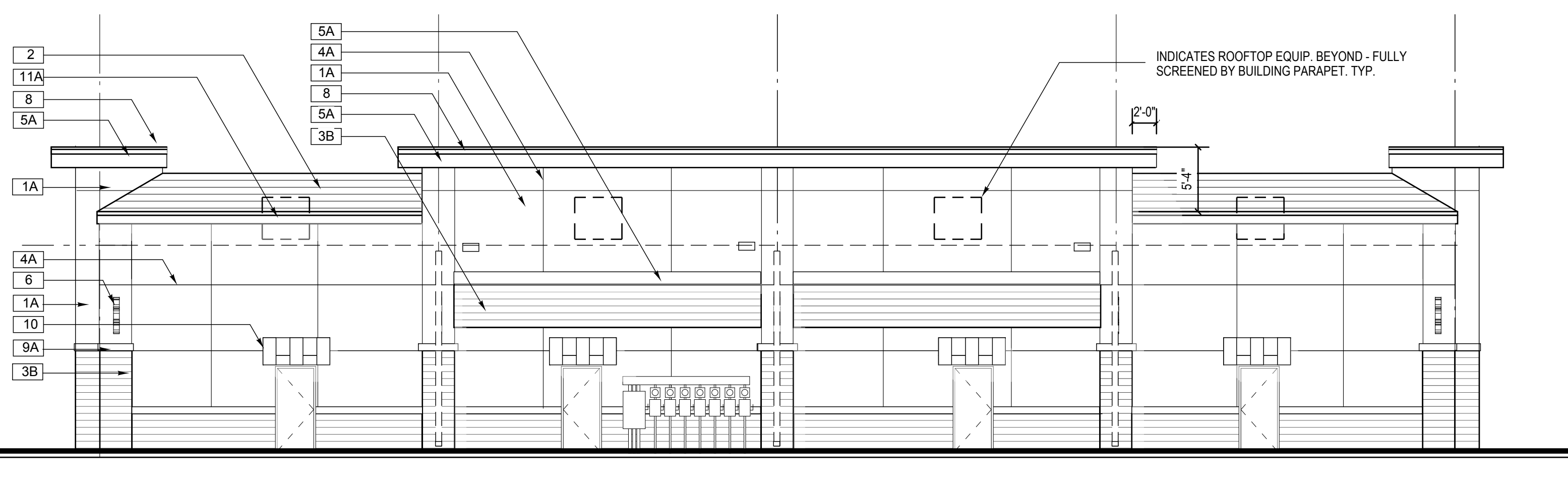
CONCEPT ELEVATION 01

REVISIONS	DATE

Contract	
Permit	
Bid	
Date	2/15/23
Scale	AS NOTED
Drawn	HT
Job	2023-04
Sheet	A3.01
	Of XIX Sheets

BUILDING DESIGN STANDARDS		
ITEM	PROVIDED	COMMENT
HORIZONTAL / VERTICAL ARTICULATION	PROVIDED	5' MIN. HORIZONTAL, 2' MIN. VERTICAL
PITCHED ROOF ELEMENT	PROVIDED	50% OF FACADE - CORNICE ELEMENTS
CORNICE ELEMENTS	PROVIDED	ARTICULATED FLAT PARAPETS
EAVES	PROVIDED	24" OVERHANG PROVIDED
ARCHITECTURAL ELEMENTS		
a. HORIZONTAL WOOD LOOK LAP SIDING	PROVIDED	100% ALL FACADES
b. CANOPY / AWNING	PROVIDED	CANVAS CANOPIES PROVIDED OVER TENANT ENTRANCES
c. SQUARE COLUMNS	PROVIDED	SQUARE COLUMN - A VERTICAL SUPPORTING MEMBER WITH A SQUARE OR RECTANGULAR SHAPED SHAFT.
e. ARCADE	PROVIDED	PROVIDED AT CENTER ENTRY FEATURE
f. DISPLAY WINDOWS	PROVIDED	AL/GL STOREFRONT DISPLAY WINDOWS PROVIDED AT EA. TENANT BAY
g. STONE PAVERS	PROVIDED	SEE SITE PLAN FOR LOCATION AND QUANTITY

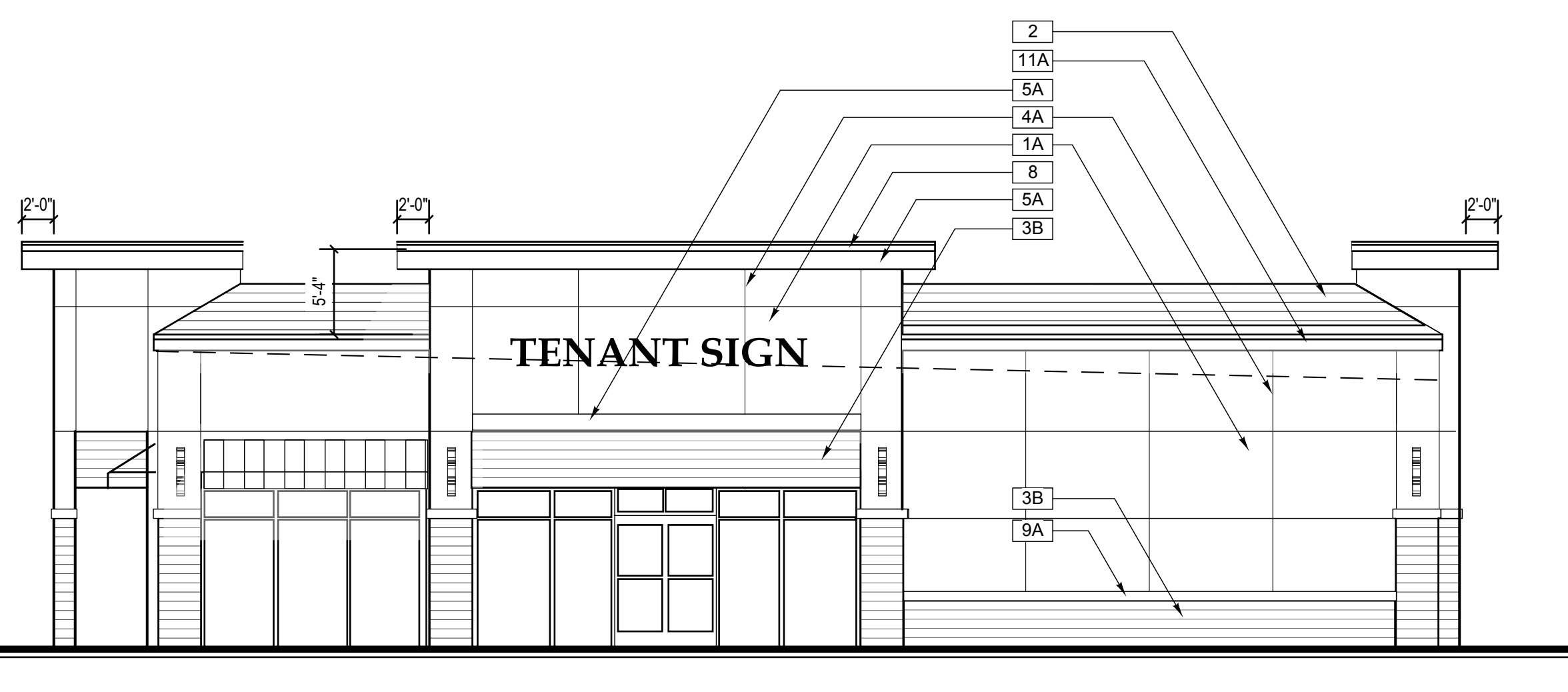
MATERIAL SCHEDULE		
MK	Material	Finish
1	CEMENT PLASTER	LIGHT KNOCK-DOWN FINISH - PAINT
2	FLAT CEMENT ROOF TILES	CHARCOAL
3	SIMULATED LAP SIDING	SMOOTH FINISH - PAINT
4	DECORATIVE SCORE LINES	PVC SCREED - PAINT
5	E.L.F.S. ON SHAPED FOAM	SMOOTH FINISH - PAINT
6	ARCHITECTURAL LIGHT FIXTURE	BLACK FINISH
7	ALUM & GLASS STOREFRONT	DARK BRONZE FRAME, TINTED GLASS
8	METAL	PRE-FINISHED WHITE
9	CEMENT PLASTER BAND	SMOOTH FINISH - PAINT
10	FABRIC AWNING (SUNBRELLA)	BLACK / WHITE FABRIC W/ ALUM. PAINTED FRAME
11	WOOD	PAINT
12		
13		
A	SHERWIN WILLIAMS	SW 7005 PURE WHITE
B	SHERWIN WILLIAMS	SW 7004 SNOWBOUND
C		



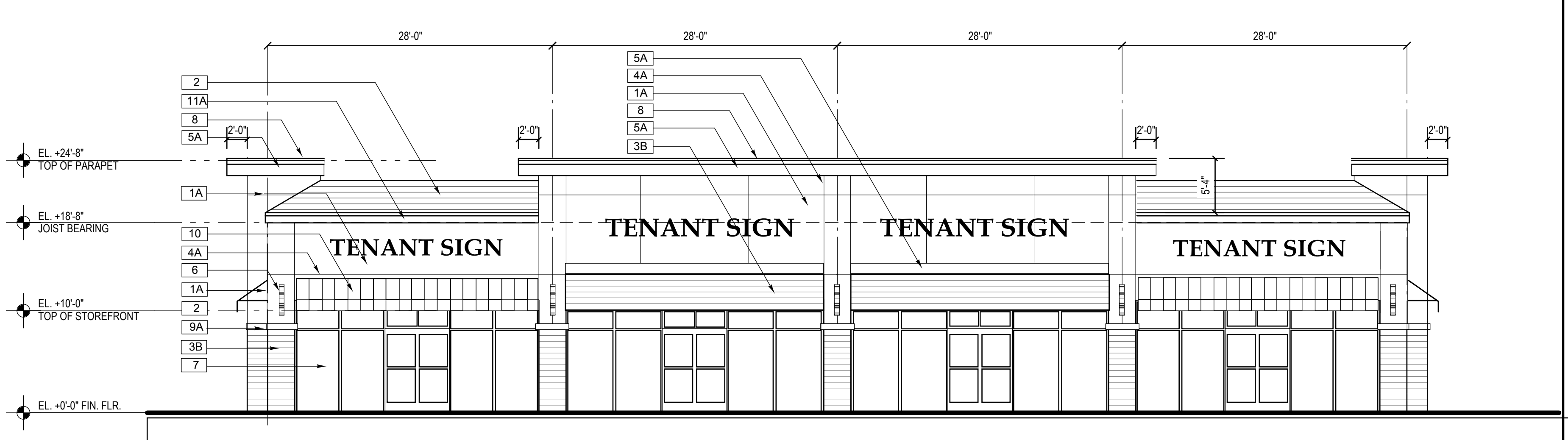
○ RETAIL REAR ELEVATION (EAST) 1/8" = 1'-0"



○ RETAIL SIDE ELEVATION (NORTH) 1/8" = 1'-0"



○ RETAIL SIDE ELEVATION (SOUTH) 1/8" = 1'-0"



○ RETAIL FRONT ELEVATION (WEST) 1/8" = 1'-0"

REVISIONS	DATE

Contract	
Permit	
Bid	
Date	2/15/23
Scale	AS NOTED
Drawn	HT
Job	2023-04
Sheet	A3.02
Of	XIX Sheets



SIDE ELEVATION (SOUTH)  
1/8" = 1'-0"



REAR ELEVATION (WEST)  
1/8" = 1'-0"



iTHINK FRONT ELEVATION (EAST)  
1/8" = 1'-0"



SIDE ELEVATION (NORTH)  
1/8" = 1'-0"

BUILDING DESIGN STANDARDS		
ITEM	PROVIDED	COMMENT
HORIZONTAL / VERTICAL ARTICULATION	PROVIDED	5' MIN. HORIZONTAL, 2' MIN. VERTICAL
PEAKED ROOF ELEMENT	PROVIDED	100% OF FACADE - CORNICE ELEMENTS
CORNICE ELEMENTS	PROVIDED	RAFTER TAILS / MOLDING
EAVES	PROVIDED	36" OVERHANG PROVIDED
ARCHITECTURAL ELEMENTS		
a. HORIZONTAL WOOD LOOK LAP SIDING	PROVIDED	100% ALL FACADES
b. CANOPY / AWNING	PROVIDED	CANVAS CANOPIES PROVIDED OVER TENANT ENTRANCES
c. SQUARE COLUMNS	PROVIDED	SQUARE COLUMN - A VERTICAL SUPPORTING MEMBER WITH A SQUARE OR RECTANGULAR SHAPED SHAFT.
e. ARCADE	PROVIDED	PROVIDED AT CENTER ENTRY FEATURE
f. DISPLAY WINDOWS	PROVIDED	AL/GL STOREFRONT DISPLAY WINDOWS PROVIDED AT EA. TENANT BAY
g. STONE PAVERS	PROVIDED	SEE SITE PLAN FOR LOCATION AND QUANTITY

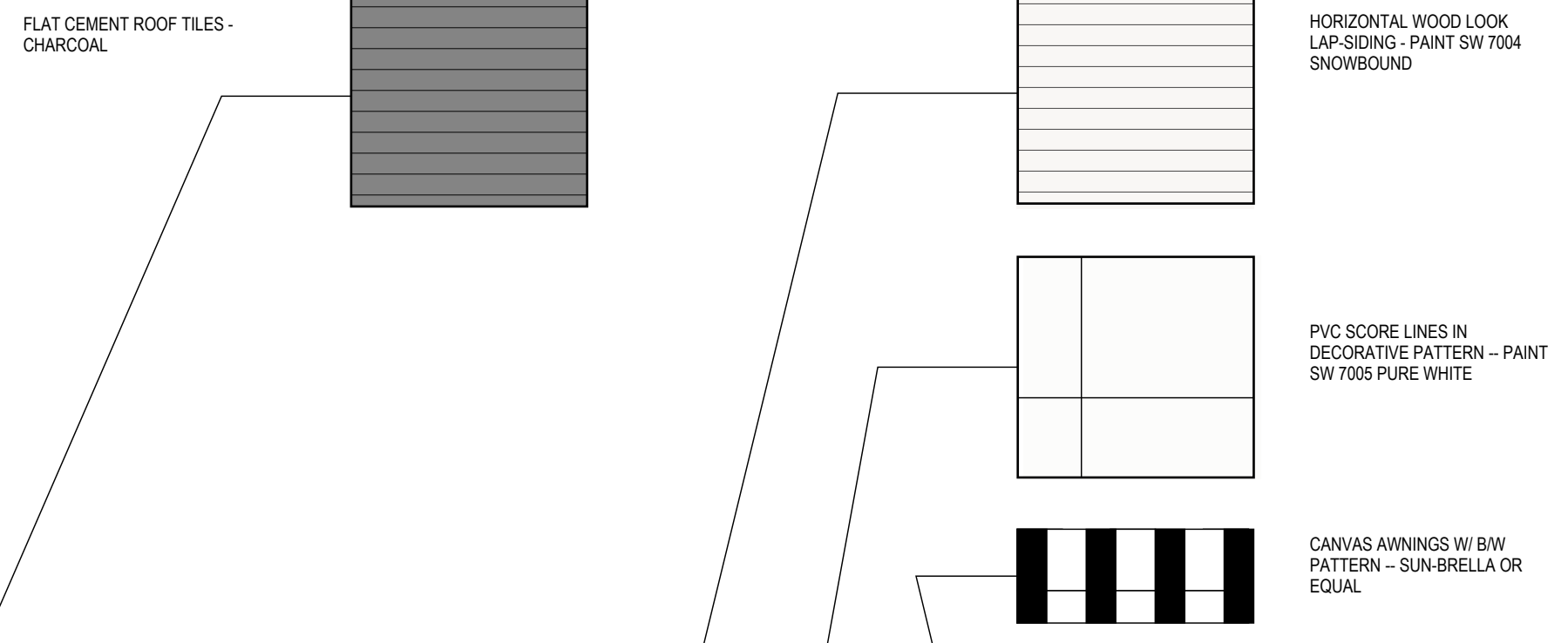
MATERIAL SCHEDULE		
MK	Material	Finish
1	CEMENT PLASTER	LIGHT KNOCK-DOWN FINISH - PAINT
2	FLAT CEMENT ROOF TILES	CHARCOAL
3	SIMULATED LAP SIDING	SMOOTH FINISH - PAINT
4	DECORATIVE SCORE LINES	PVC SCREED - PAINT
5	E.L.F.S. ON SHAPED FOAM	SMOOTH FINISH - PAINT
6	ARCHITECTURAL LIGHT FIXTURE	BLACK FINISH
7	ALUM & GLASS STOREFRONT	DARK BRONZE FRAME, TINTED GLASS
8	METAL	PRE-FINISHED WHITE
9	CEMENT PLASTER BAND	SMOOTH FINISH - PAINT
10	FABRIC AWNING (SUNBRELLA)	BLACK / WHITE FABRIC W/ ALUM. PAINTED FRAME
11	WOOD	PAINT
12		
13		
A	SHERWIN WILLIAMS	SW 7005 PURE WHITE
B	SHERWIN WILLIAMS	SW 7004 SNOWBOUND
C		

951-860-5805  
 TUTTLE DESIGN LLC  
 ARCHITECTURE  
 HAROLD TUTTLE  
 AR #0015395

iTHINK BANK RETAIL PLAZA  
 Tradition- IBM Southeast Employee Credit Union  
 PORT ST. LUCIE, FLORIDA

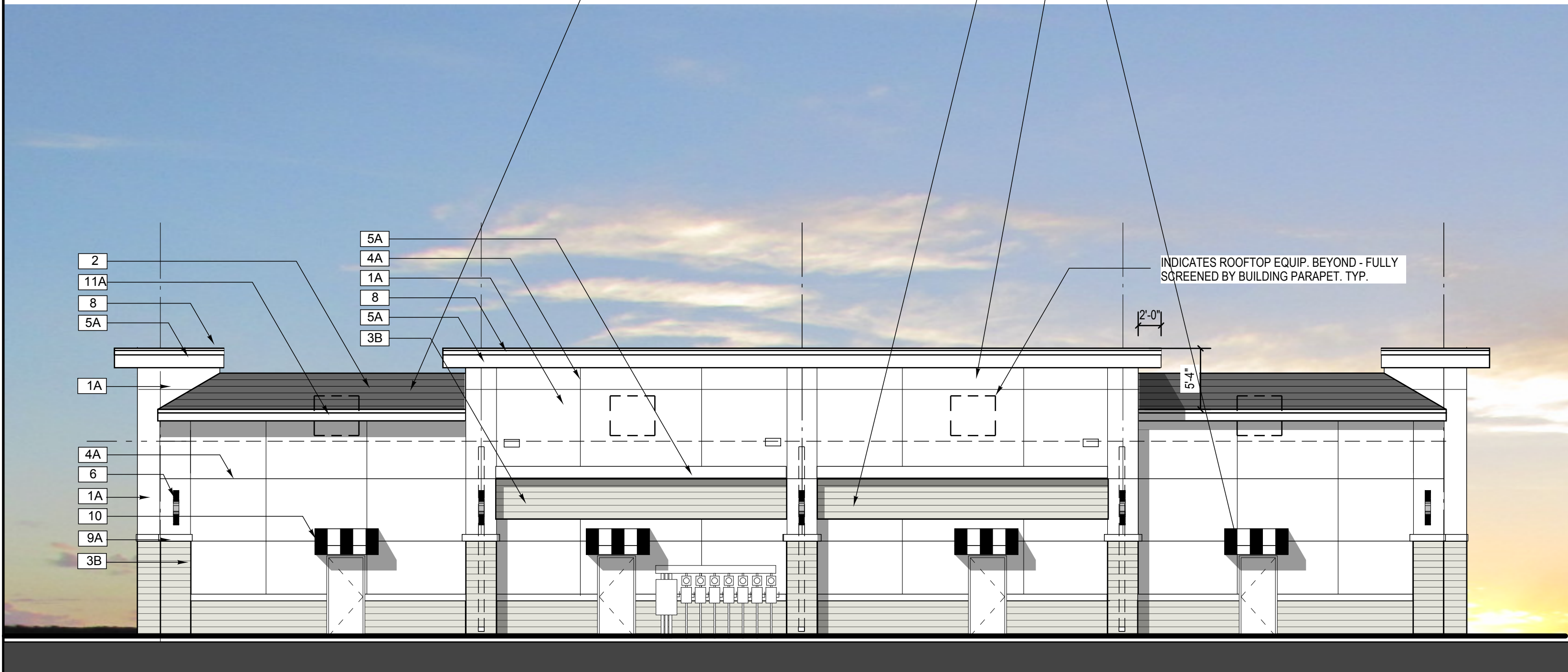
REVISIONS	DATE

Contract \_\_\_\_\_  
 Permit \_\_\_\_\_  
 Bid \_\_\_\_\_  
 Date 2/15/23  
 Scale AS NOTED  
 Drawn HT  
 Job 2023-04  
 Sheet  
**A3.01C**  
 Of XIX Sheets



BUILDING DESIGN STANDARDS		
ITEM	PROVIDED	COMMENT
HORIZONTAL / VERTICAL ARTICULATION	PROVIDED	5' MIN. HORIZONTAL, 2' MIN. VERTICAL
PITCHED ROOF ELEMENT	PROVIDED	50% OF FACADE - CORNICE ELEMENTS
CORNICE ELEMENTS	PROVIDED	ARTICULATED FLAT PARAPETS
EAVES	PROVIDED	24" OVERHANG PROVIDED
ARCHITECTURAL ELEMENTS		
a. HORIZONTAL WOOD LOOK LAP-SIDING	PROVIDED	100% ALL FACADES
b. CANOPY / AWNING	PROVIDED	CANVAS CANOPIES PROVIDED OVER TENANT ENTRANCES
c. SQUARE COLUMNS	PROVIDED	SQUARE COLUMN - A VERTICAL SUPPORTING MEMBER WITH A SQUARE OR RECTANGULAR SHAPED SHAFT
e. ARCADE	PROVIDED	PROVIDED AT CENTER ENTRY FEATURE
f. DISPLAY WINDOWS	PROVIDED	AL/GL STOREFRONT DISPLAY WINDOWS PROVIDED AT EA. TENANT BAY
g. STONE PAVERS	PROVIDED	SEE SITE PLAN FOR LOCATION AND QUANTITY

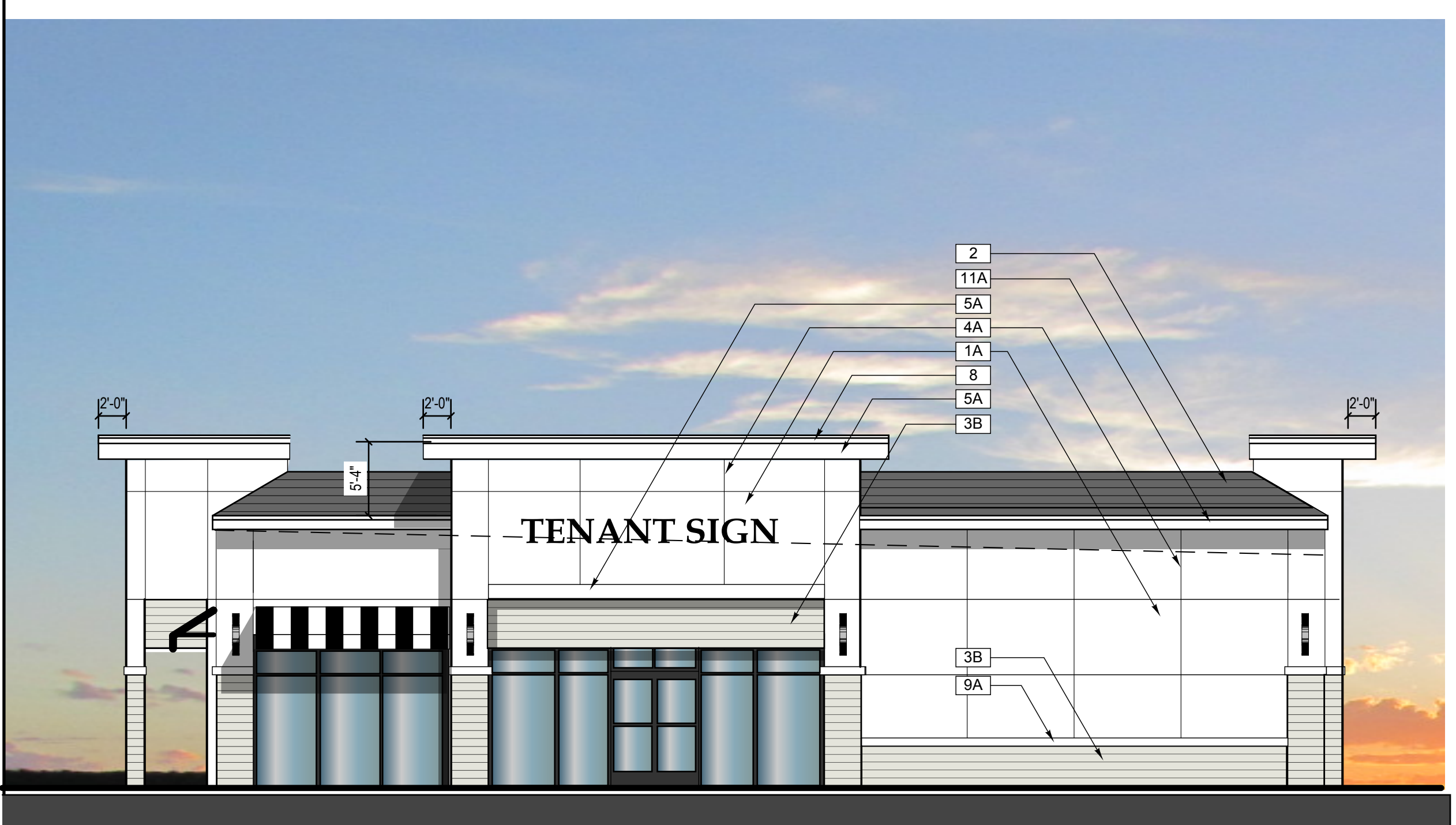
MATERIAL SCHEDULE		
MK	Material	Finish
1	CEMENT PLASTER	LIGHT KNOCK-DOWN FINISH - PAINT
2	FLAT CEMENT ROOF TILES	CHARCOAL
3	SIMULATED LAP-SIDING	SMOOTH FINISH - PAINT
4	DECORATIVE SCORE LINES	PVC SCREED - PAINT
5	ELF S. ON SHAPED FOAM	SMOOTH FINISH - PAINT
6	ARCHITECTURAL LIGHT FIXTURE	BLACK FINISH
7	ALUM & GLASS STOREFRONT	DARK BRONZE FRAME, TINTED GLASS
8	METAL	PRE-FINISHED WHITE
9	CEMENT PLASTER BAND	SMOOTH FINISH - PAINT
10	FABRIC AWNING (SUNBRELLA)	BLACK / WHITE FABRIC W/ ALUM. PAINTED FRAME
11	WOOD	PAINT
12		
13		
A	SHERWIN WILLIAMS	SW 7005 PURE WHITE
B	SHERWIN WILLIAMS	SW 7004 SNOWBOUND
C		



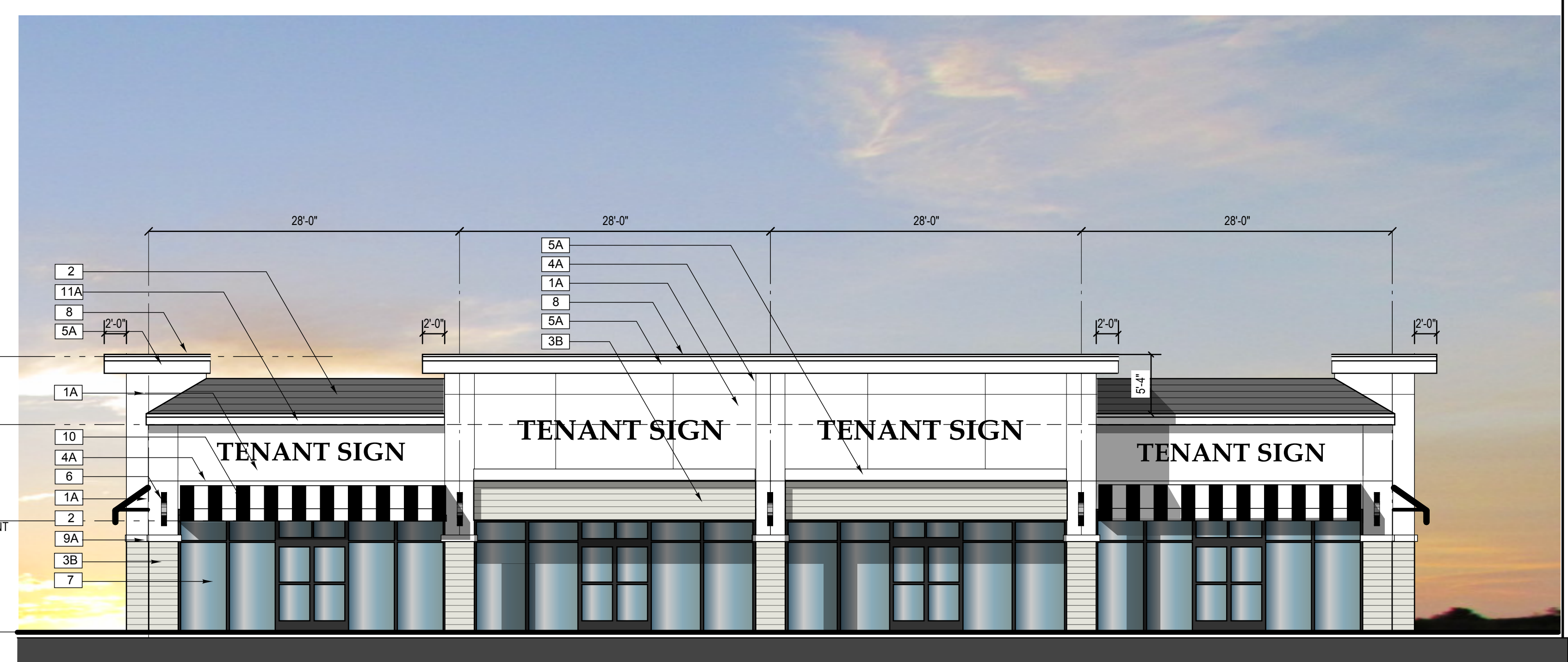
○ RETAIL REAR ELEVATION (EAST) 1/8" = 1'-0"



○ RETAIL SIDE ELEVATION (NORTH) 1/8" = 1'-0"



○ RETAIL SIDE ELEVATION (SOUTH) 1/8" = 1'-0"



○ RETAIL FRONT ELEVATION (WEST) 1/8" = 1'-0"

REVISIONS	DATE

Contract	
Permit	
Bid	
Date	2/15/23
Scale	AS NOTED
Drawn	HT
Job	2023-04
Sheet	A3.02C
Of	XIX Sheets