



	EAST ELEVATION	1
		1" = 10'-0"



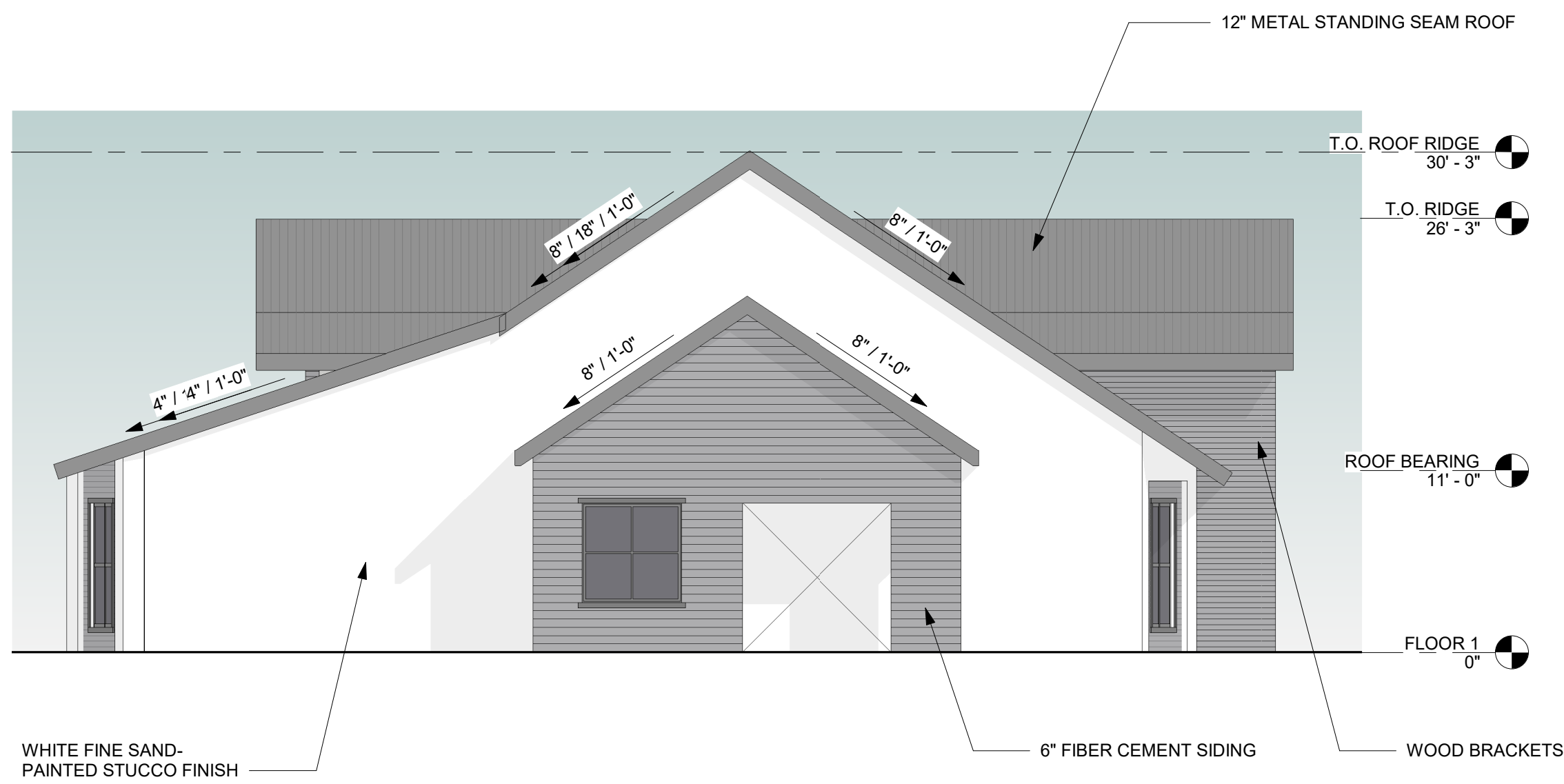
	SOUTH ELEVATION	2
		1" = 10'-0"



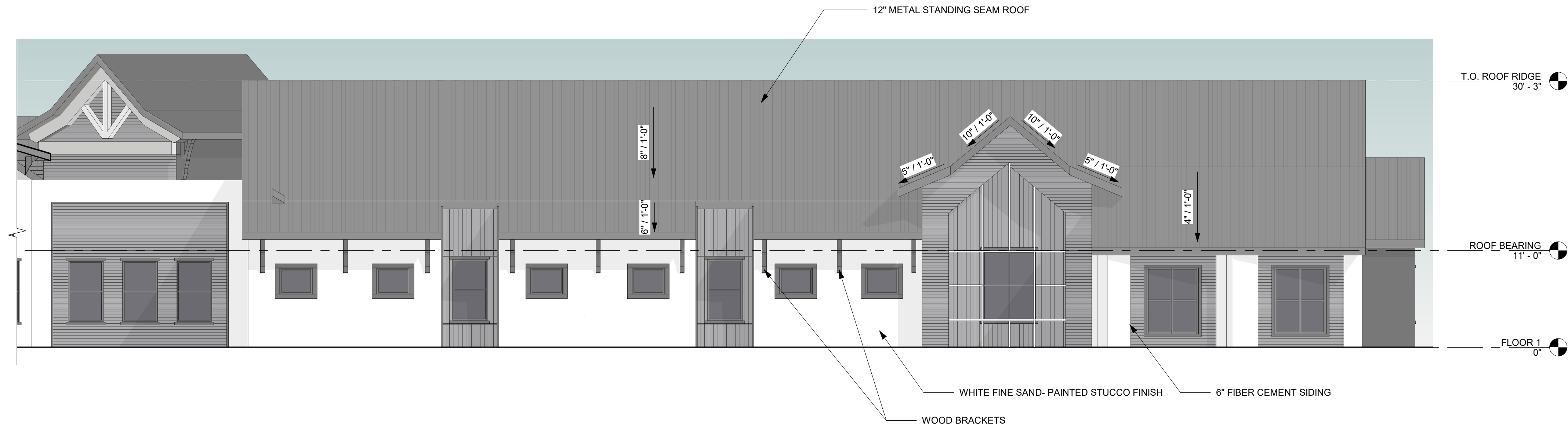
NORTH ELEVATION	1
	1/8" = 1'-0"



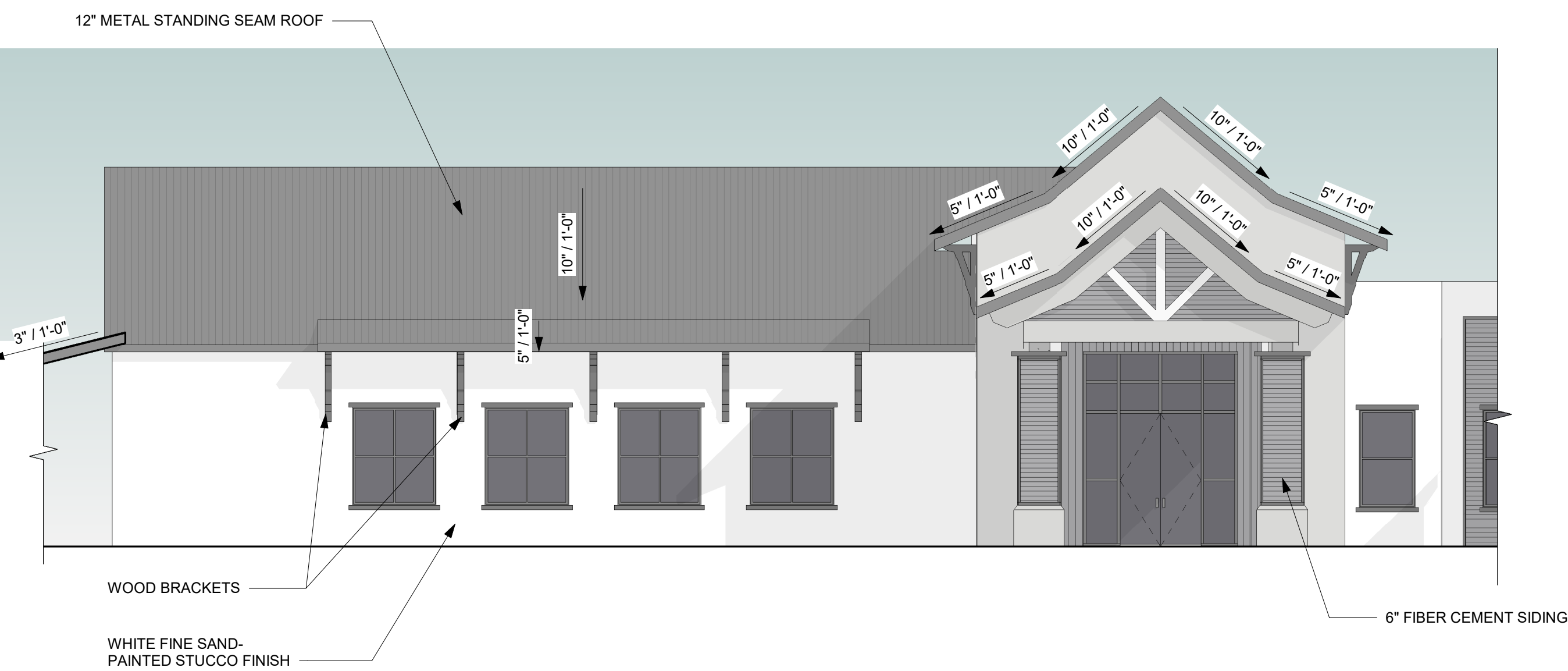
WEST ELEVATION	2
	1" = 10'-0"



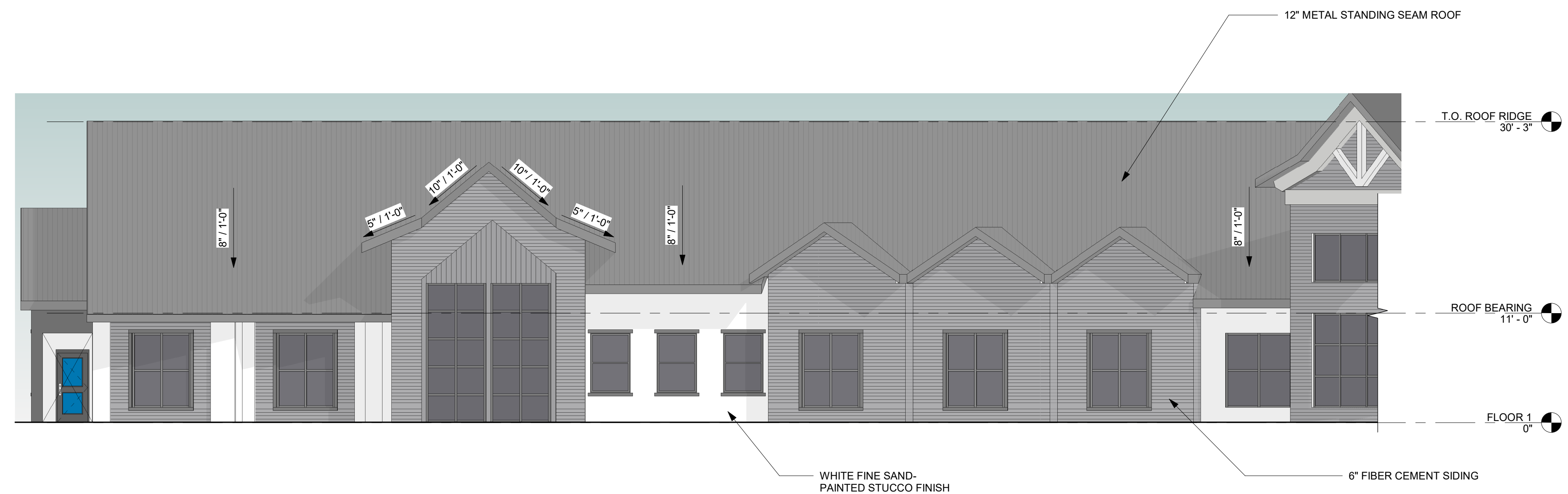
PATIENT NORTH WING	2
1/8" = 1'-0"	



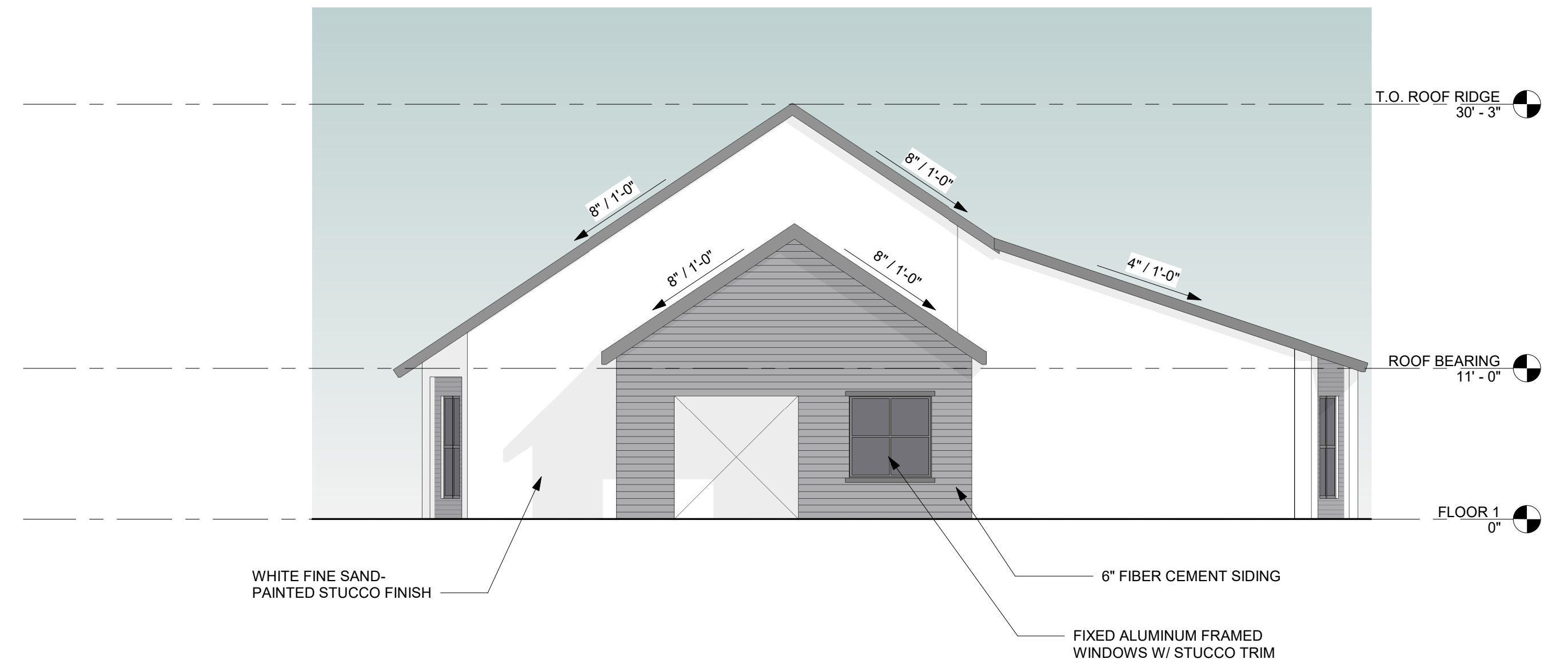
EAST ELEVATION - NORTH WING	1
1/8" = 1'-0"	



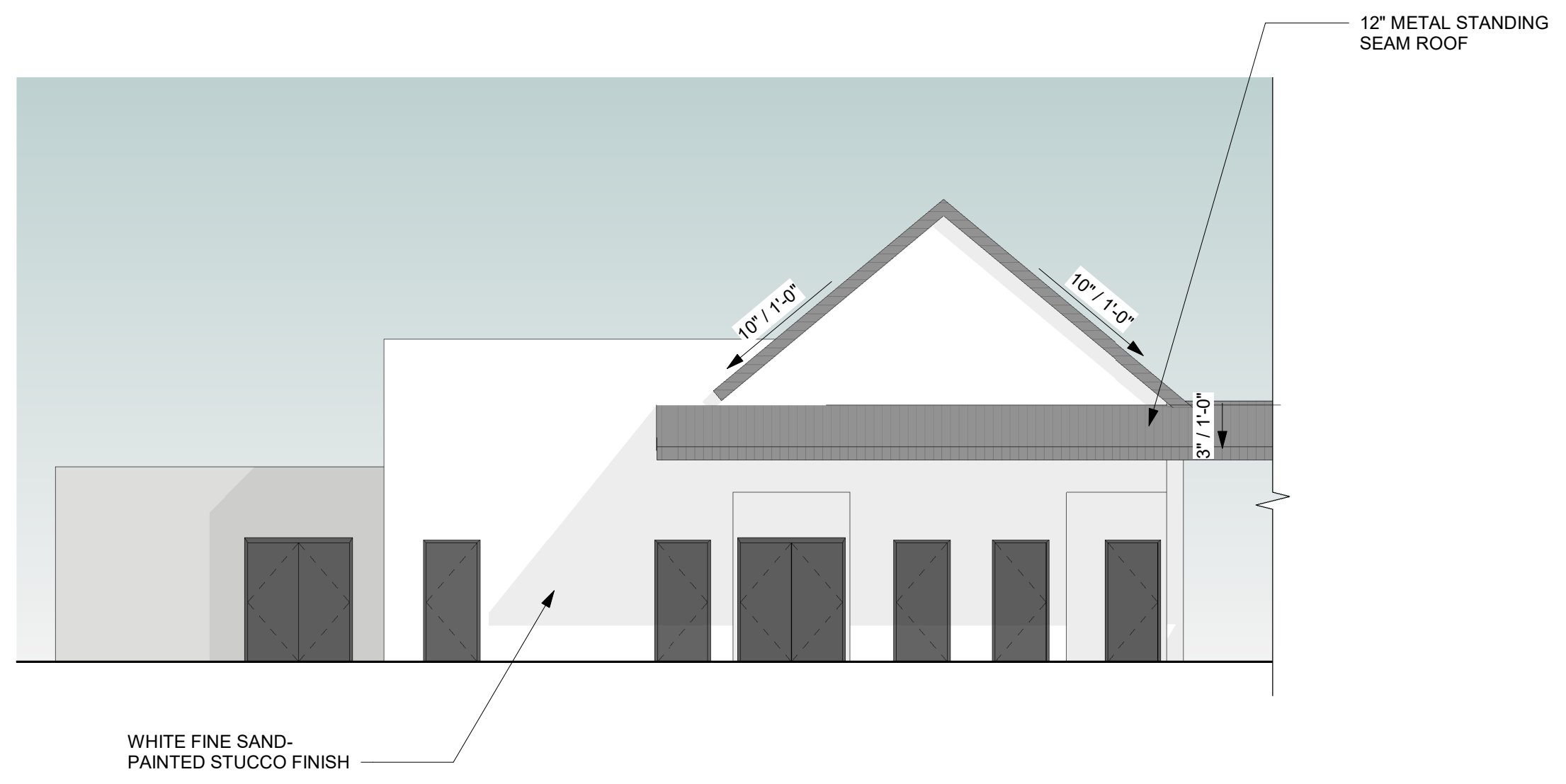
NE ELEVATION - MAIN ENTRY	4
1/8" = 1'-0"	



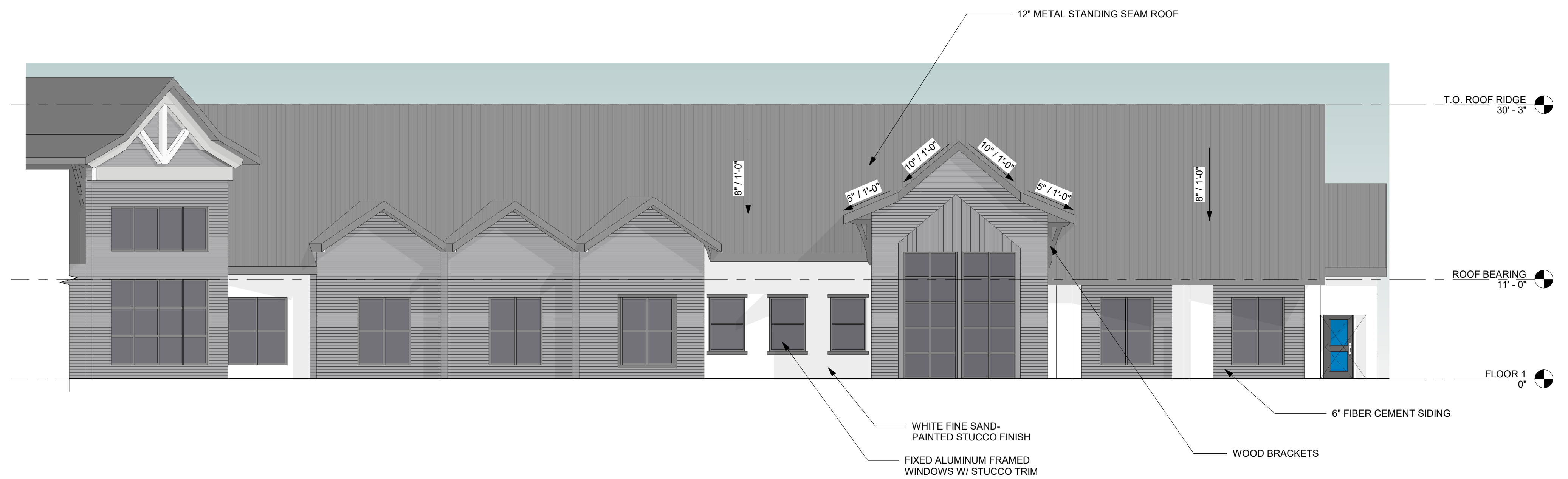
WEST ELEVATION - NORTH WING	3
1/8" = 1'-0"	



PATIENT WEST WING	1
	1/8" = 1'-0"



EAST BUILDING END	3
	1/8" = 1'-0"



NORTH ELEVATION - WEST WING	2
	1/8" = 1'-0"