

AREA CALCULATIONS	
TOTAL BUILDING AREA	20,339 SF.
TOTAL:	20,339 SF.

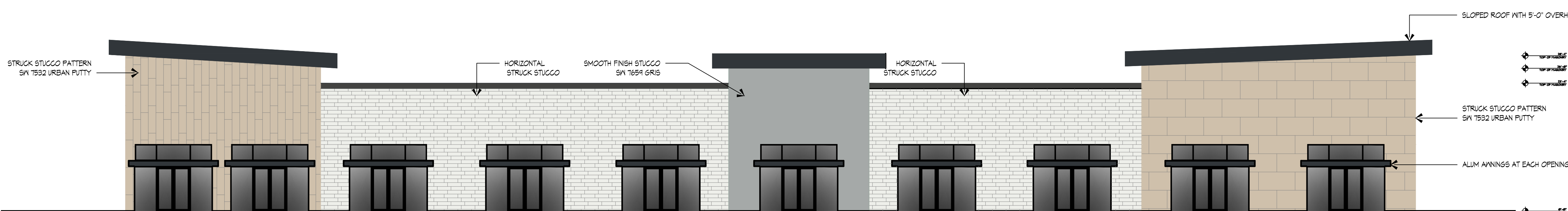
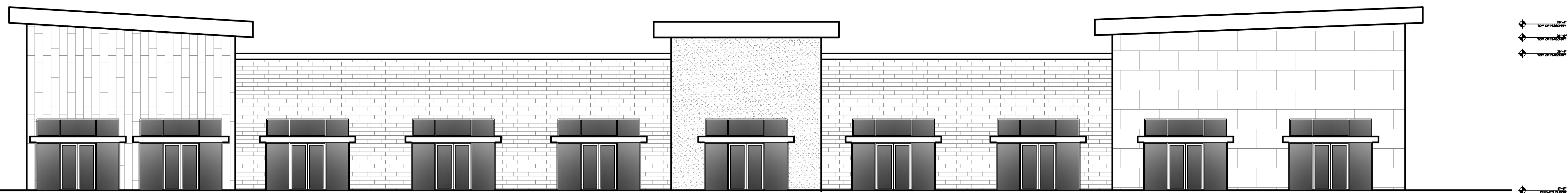
A NEW COMMERCIAL FACILITY FOR:  
VILLAGE PARKWAY PLAZA  
PORT SAINT LUCIE FLORIDA

PROJECT

DOCUMENT DATE:  
07.28.2023

REVISIONS:

NO.	DESCRIPTION	DATE



MATERIAL LEGEND	
MATERIAL #1	STUCCO VENEER - PATTERN PER ELEVATIONS SKY006 EXTRA WHITE
MATERIAL #2	ALUMINUM WINDOWS BLACK
MATERIAL #3	ALUMINUM CANOPIES SN 6992 INK WELL
MATERIAL #4	ALUMINUM CORNICE SN 6992 INK WELL

PROJECT NUMBER:  
TBD

A/C EQUIPMENT ON ROOF PARAPET WALLS SHALL HIDE ALL A/C AND OTHER EQUIPMENT ON ROOF FROM VIEW FROM A DISTANCE OF 300 FEET AT 6 FEET ABOVE GROUND

SHEET TITLE:  
FLOOR PLAN

SHEET NUMBER:

**A-1**