

TREY LUCAS  
ARCHITECTURE

o: 404.378.7431  
c: 404.307.0771  
e: trey@treylucas.com  
www.treylucas.com

Owner  
Kiwi Land Holding, LLC  
221 Commercial Blvd  
Suite 202  
Lauderdale by the Sea, FL 33308  
954.938.7211

Kiwi Express Car Wash P20-109  
2080 SW Gatlin Blvd  
Port St. Lucie, FL 34953



DATE REVISION NUMBER

12/11/2020

### 3D VIEWS

Project Number Project Number

Date 12/11/2020

Drawn By III

Checked By Checker

# 3D

Scale



1 (3D)



3 3D View 1



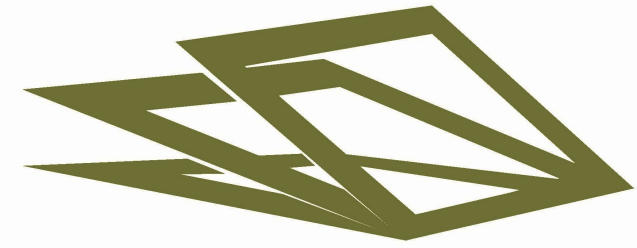
4 3D View 2



2 3D View 3



5 3D View of Loading-Office



**TREY LUCAS**  
ARCHITECTURE

o: 404.378.7431  
c: 404.307.0771  
e: treylucas@treylucas.com  
www.treylucas.com

Owner  
Kiwi Land Holding, LLC  
221 Commercial Blvd  
Suite 202  
Lauderdale by the Sea, FL 33308  
954.938.7211

Kiwi Express Car Wash P20-109  
2080 SW Gatlin Blvd  
Port St. Lucie, FL 34953



DATE REVISION NUMBER

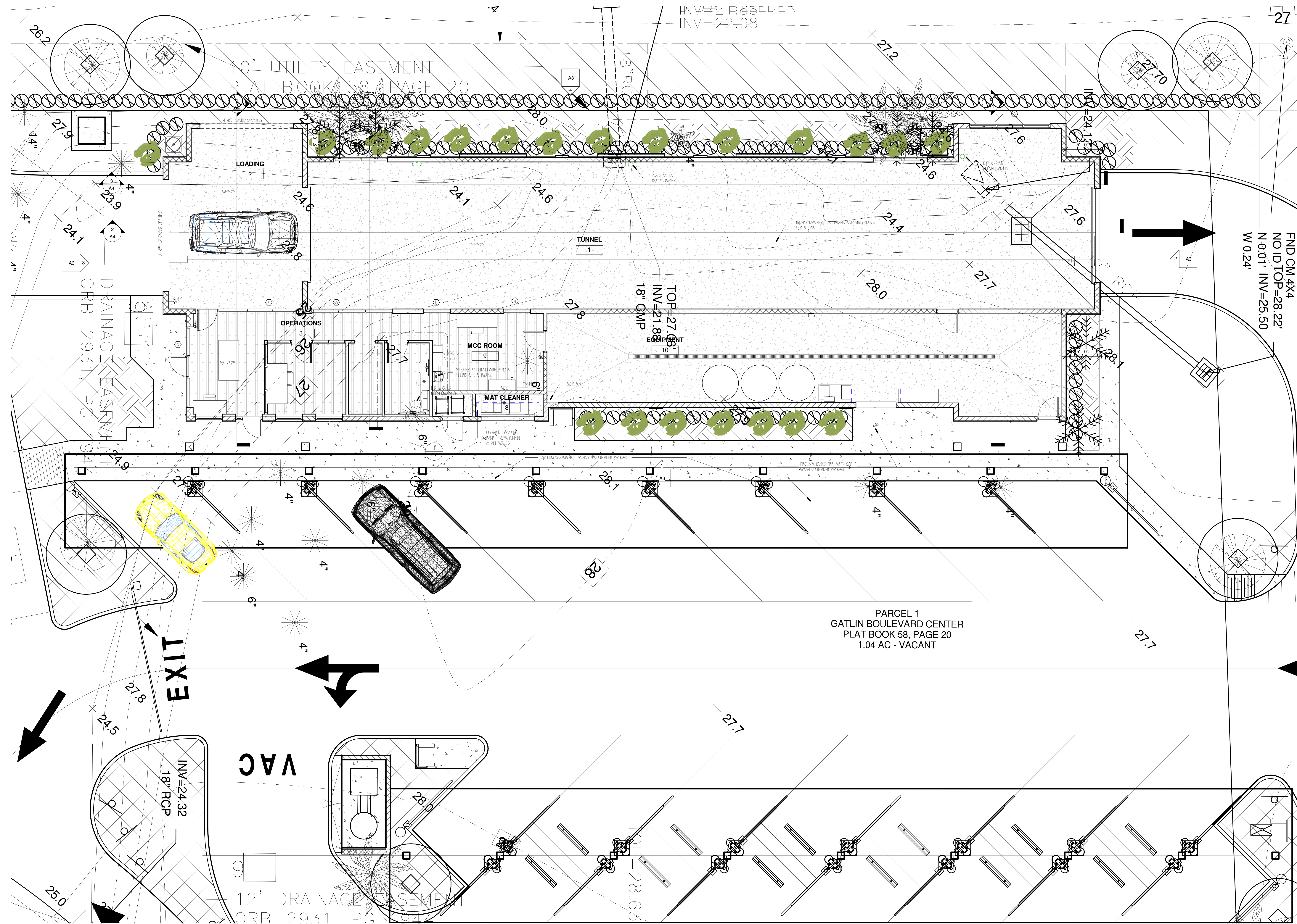
12/11/2020

**FLOOR PLAN**

Project Number Project Number  
Date 12/11/2020  
Drawn By III  
Checked By Checker

**A1**

Scale 3/16" = 1'-0"



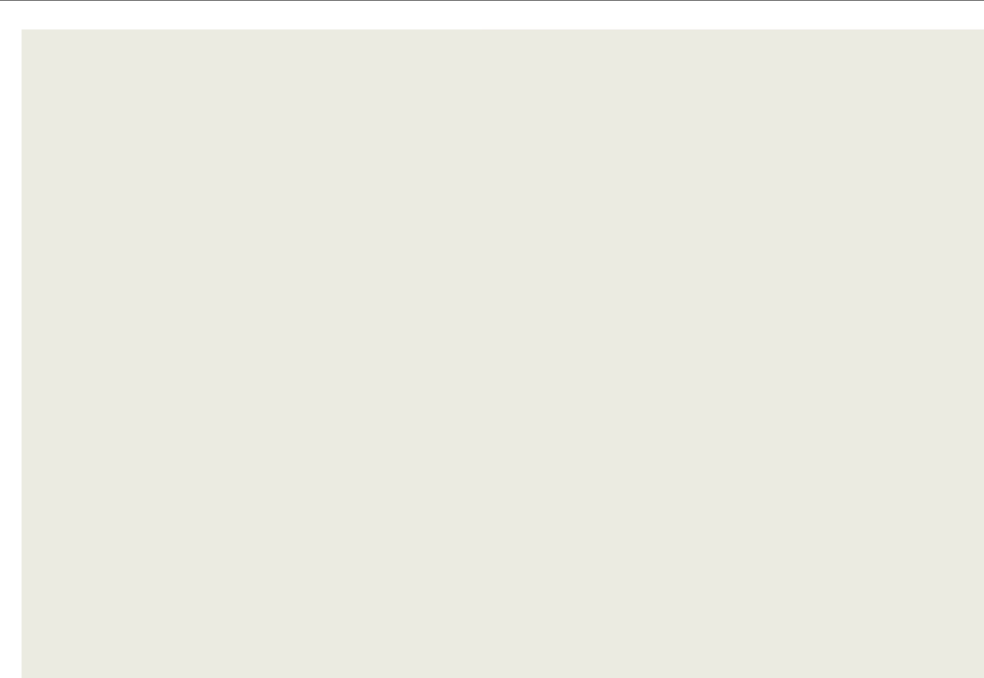
1 FLOOR PLAN  
3/16" = 1'-0"

**EXTERIOR ELEVATIONS NOTES:**

1. ALL FINISHES ARE OWNER FINISHED AND OWNER INSTALLED (C.O.D.).
2. THE GENERAL CONTRACTOR SHOULD PROVIDE A PRICE FOR AN ASD ALTERNATE FOR ALL FINISHES ON THE BUILDING.
3. AWNING AND SIGNAGE ARE UNDER SEPARATE PERMIT. REFERENCE VENDORS DRAWINGS.
4. ELEVATION DESIGN AND COLORS WILL NOT BE MODIFIED WITHOUT CITY APPROVAL.
5. ALL ROOF MOUNTED EQUIPMENT SHALL NOT EXCEED THE HEIGHT OF THE PARAPET.



ZINC GRAY



WHITE E.I.F.S.

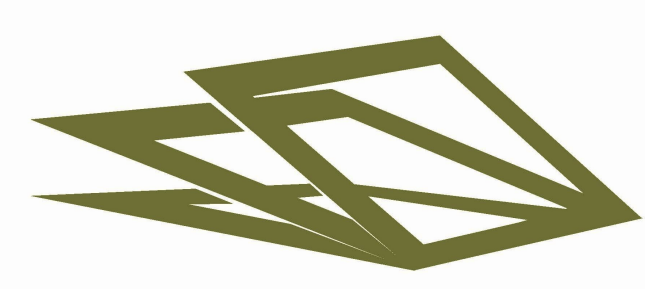


NICHIHA



GREEN E.I.F.S.

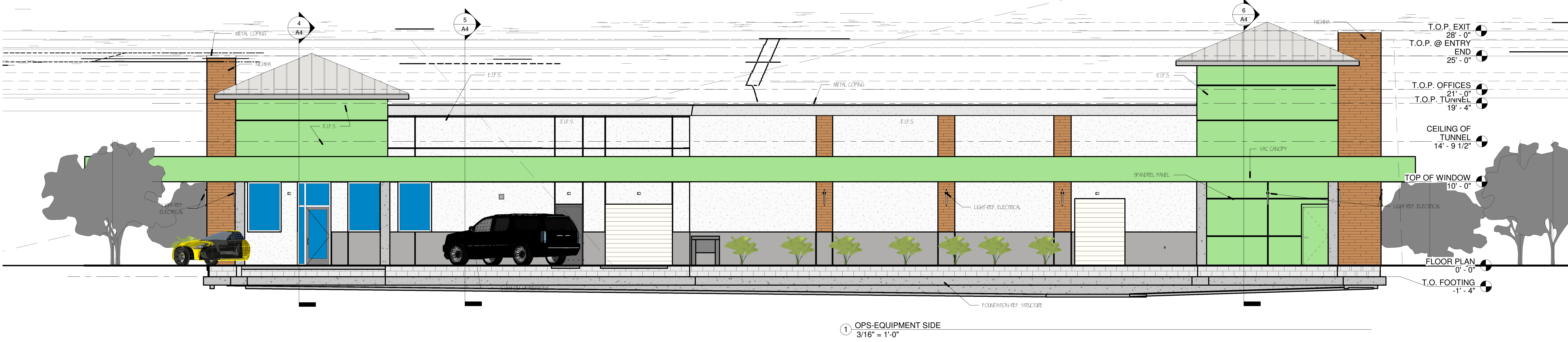
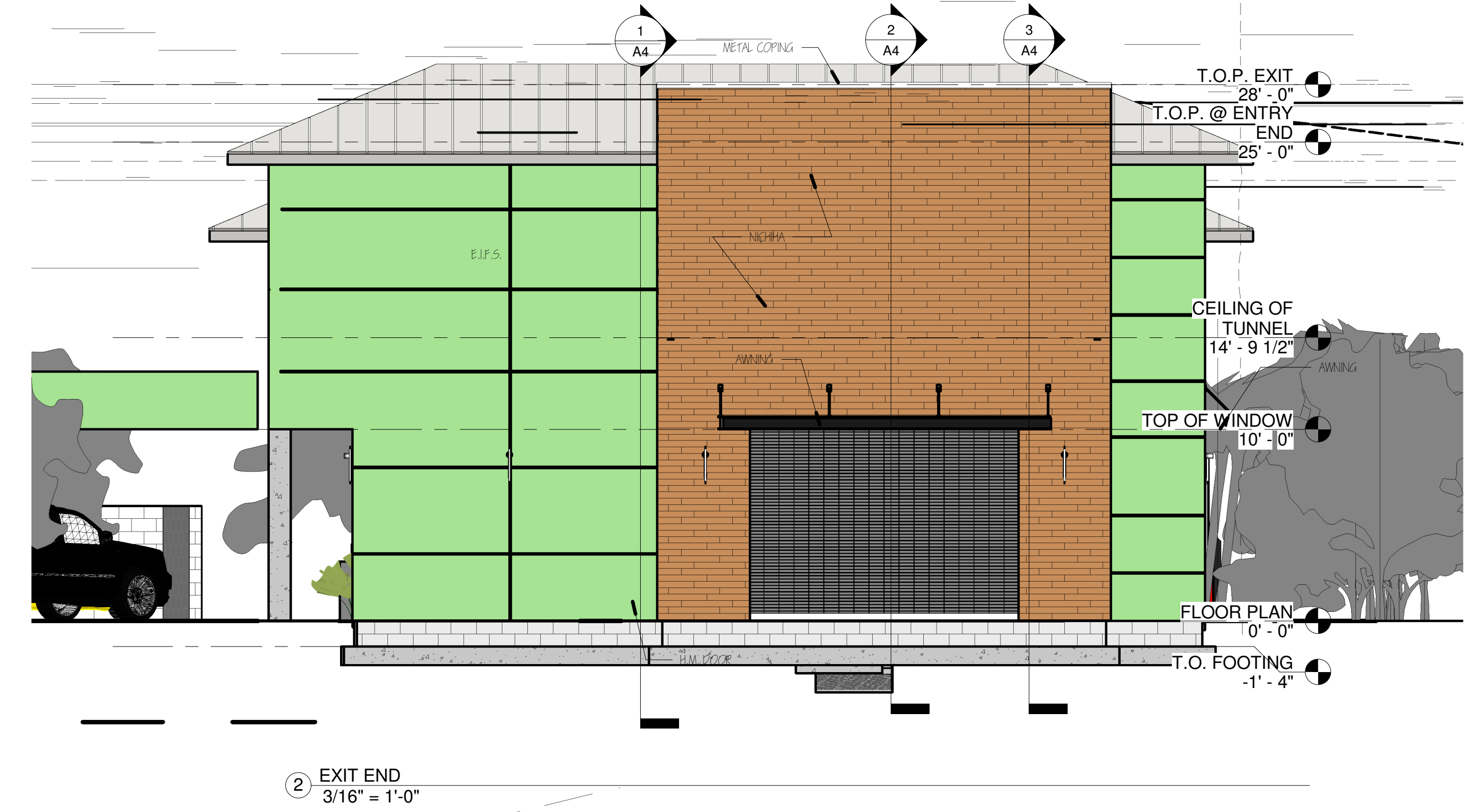
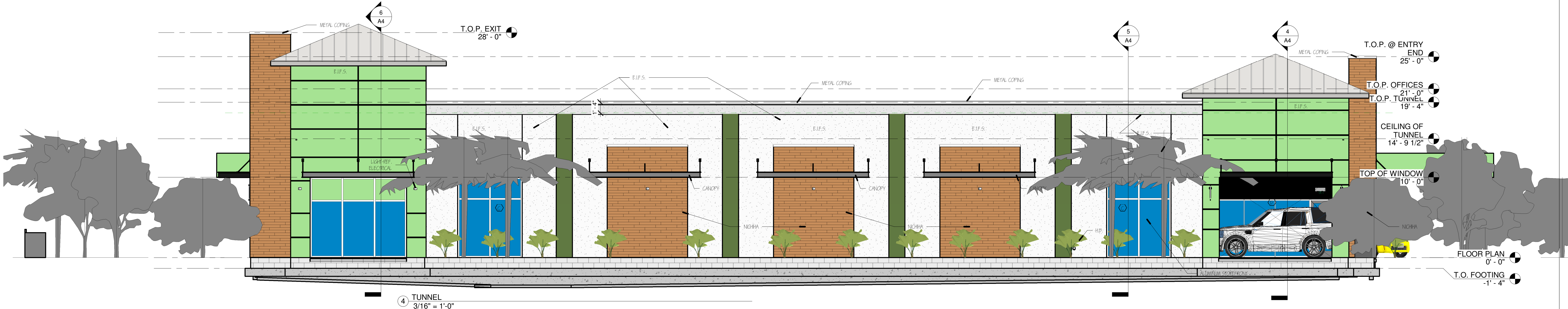
| EXTERIOR FINISHES |                                   |                           |                       |  |   |
|-------------------|-----------------------------------|---------------------------|-----------------------|--|---|
| MARK              | MATERIAL                          | COLOR                     | MANUFACTURER          | PRODUCT #                              | REMARKS                                 |
| P-1               | PAINT                             | SPRUE WHITE<br>NONMOLDING | SHERWIN WILLIAMS      | SW 6202S<br>SW 70004                   | WHITE E.I.F.S. SUBSTITUTE SPRUE WHITE   |
| P-2               | PAINT                             | PANTONE 559AC             | SHERWIN WILLIAMS      | PANTONE 559AC                          | GREEN E.I.F.S. SUBSTITUTE HAVEN SW 6497 |
| P-3               | PAINT                             | GRAY                      | SHERWIN WILLIAMS      | SW 7665S                               | BASE OF BUILDING                        |
| S-1               | STAIN                             | BRN                       | SHERWIN WILLIAMS      | -                                      | SEMI-GLAZED 2 COATS POLYURETHANE        |
| E.I.F.S.          | EXTERIOR INSULATION FINISH SYSTEM | Pantone Green 7485 U      | PREVIT/ SIO           | -                                      | -                                       |
| NCP               | NICHIHA                           | Vulcanized Spruce         | -                     | -                                      | -                                       |
| ALUM 1            | SCORELINE                         | CLEAR ANODIZED            | KAWNEER/YS            | KAWNEER 461                            | INSTALL GLOBE PLAYS ON BACK OF ALL JAMB |
| COPING            | METAL COPING                      | BRN                       | METAL ROOFING SYSTEMS | KNIFE 100, 24 GA.<br>20 GA. WIDE PANEL | GALVANIZED, PRE-FINISHED                |
| RM                | CONCRETE RM                       | -                         | JAMES HARDIE          | 5/4" x 8" PERIC                        | -                                       |



**TREY LUCAS  
ARCHITECTURE**

o: 404.378.7431  
c: 404.307.0771  
e: treyl@treylucas.com  
www.treylucas.com

Owner  
Kiwi Land Holding, LLC  
221 Commercial Blvd  
Suite 202  
Lauderdale by the Sea, FL 33308  
954.938.7211



Kiwi Express Car Wash P20-109  
2080 SW Gatlin Blvd  
Port St. Lucie, FL 34953



| DATE | REVISION | NUMBER |
|------|----------|--------|
|      |          |        |

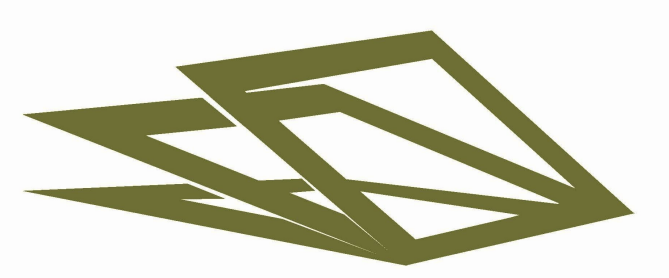
12/11/2020

**EXTERIOR  
ELEVATIONS**

|                |                |
|----------------|----------------|
| Project Number | Project Number |
| Date           | 12/11/2020     |
| Drawn By       | III            |
| Checked By     | III            |

**A3**

Scale 3/16" = 1'-0"



TREY LUCAS ARCHITECTURE

o: 404.378.7431  
c: 404.307.0771  
e: treyl@treylucas.com  
www.treylucas.com

Owner  
Kiwi Land Holding, LLC  
221 Commercial Blvd  
Suite 202  
Lauderdale by the Sea, FL 33308  
954.938.7211

Kiwi Express Car Wash P20-109  
2080 SW Gatlin Blvd  
Port St. Lucie, FL 34953



DATE REVISION NUMBER

12/11/2020

BUILDING SECTIONS

Project Number Project Number

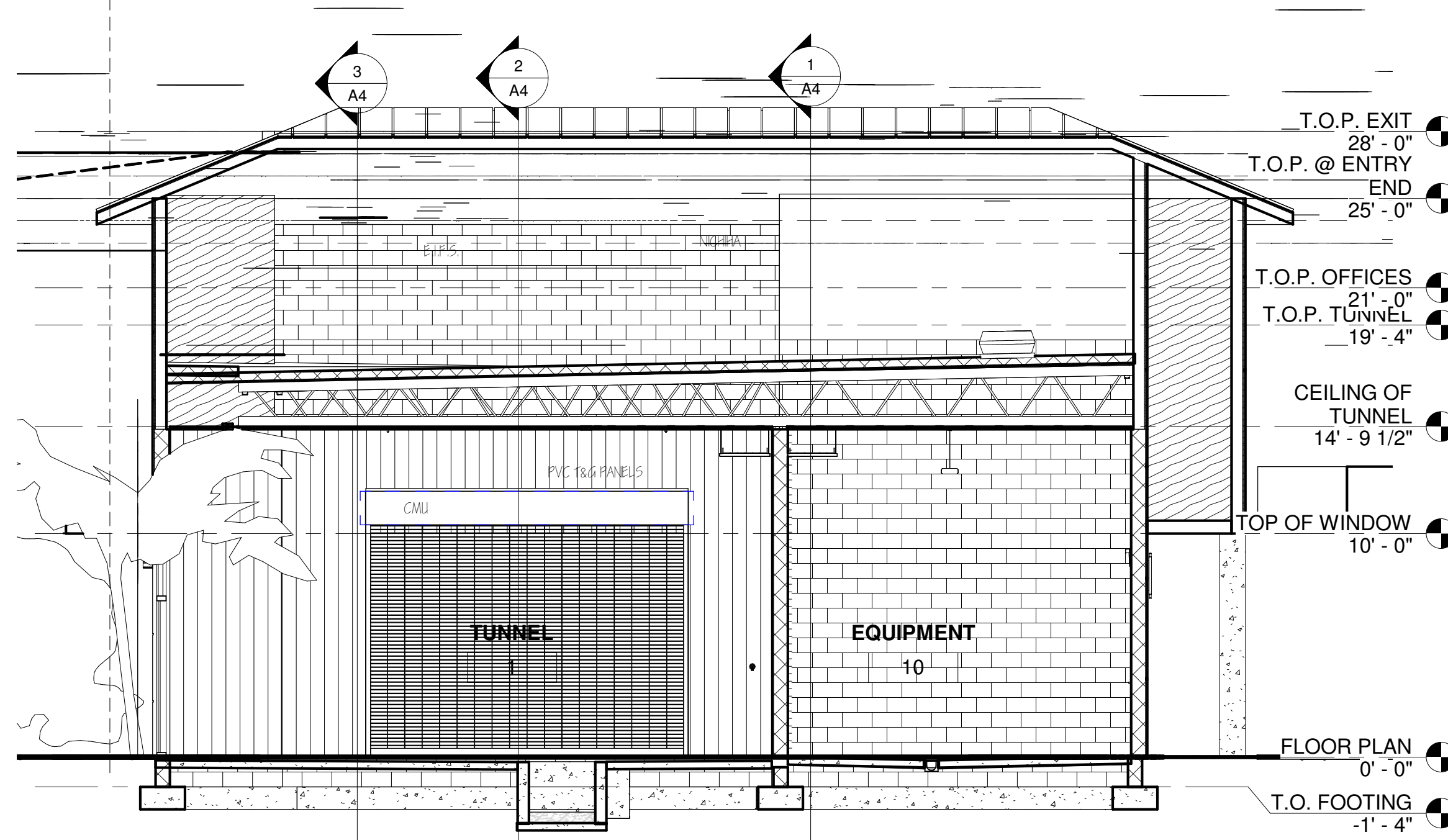
Date 12/11/2020

Drawn By III

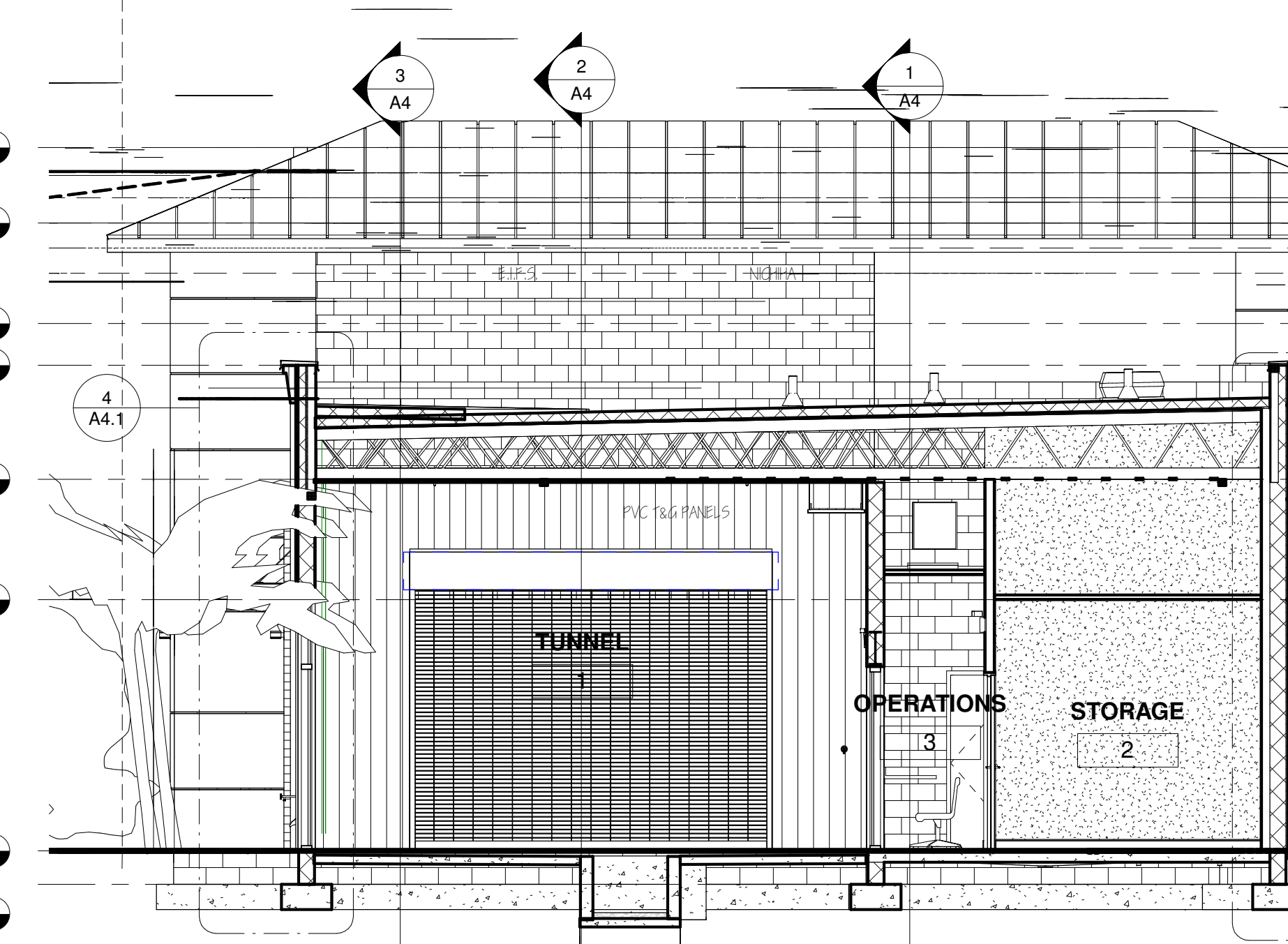
Checked By Checker

A4

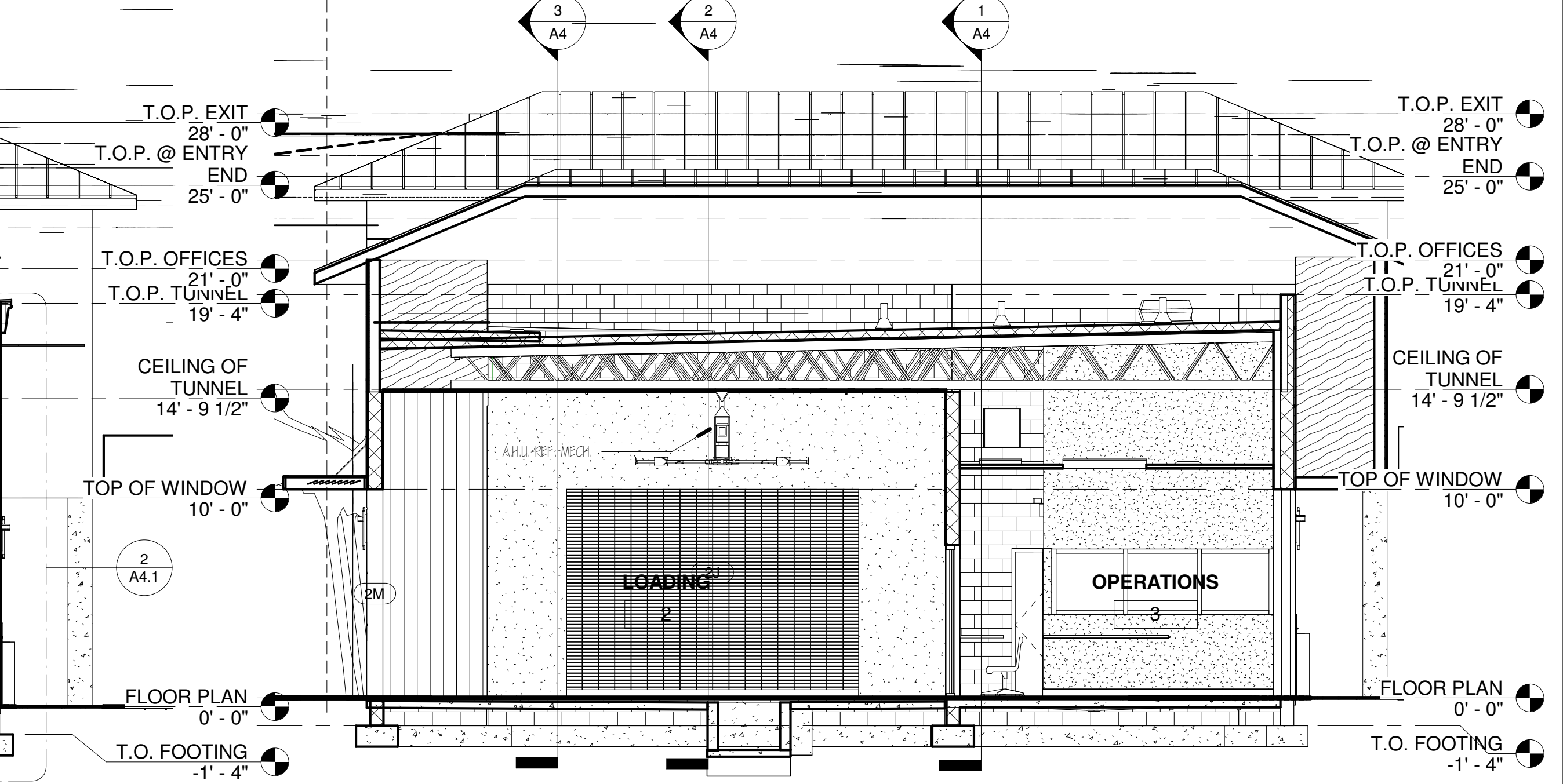
Scale 3/16" = 1'-0"



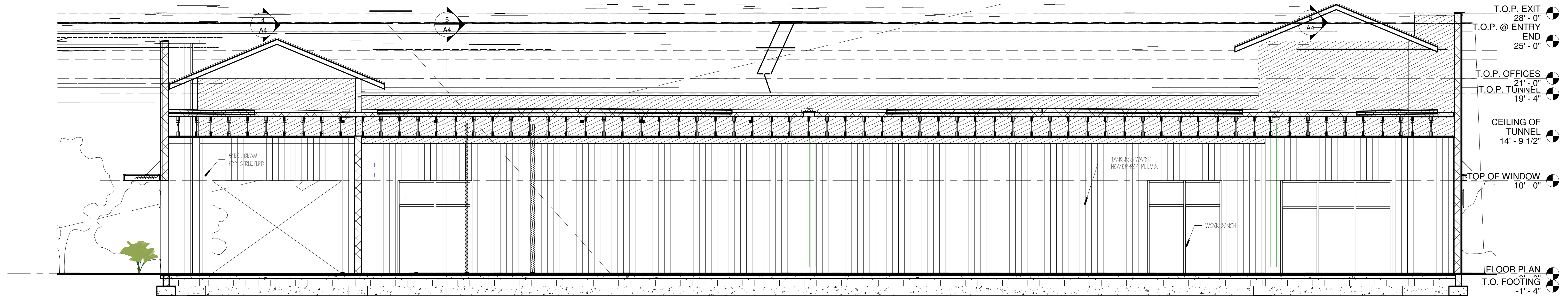
6 SECTION THRU EQUIPMENT-TUNNEL  
3/16" = 1'-0"



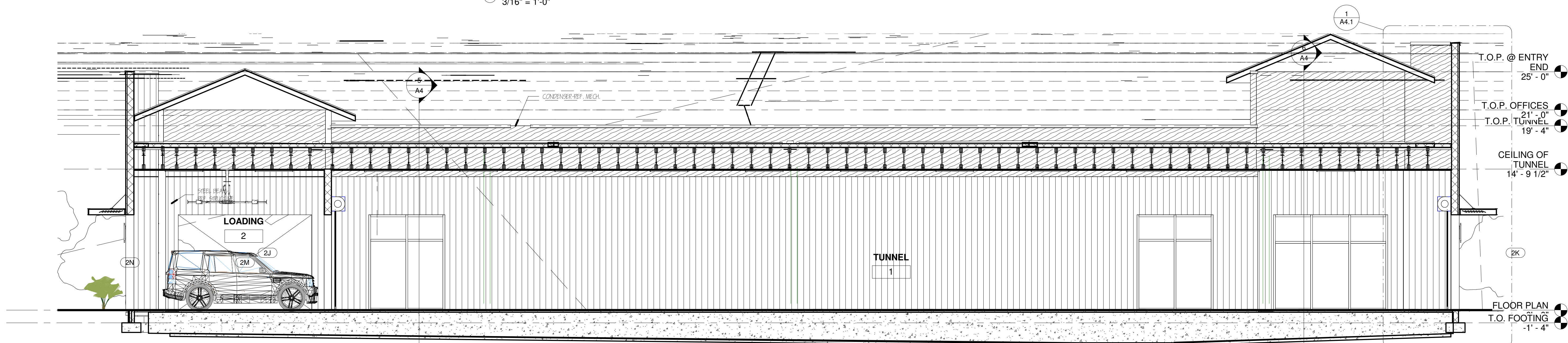
5 SECTION THRU BREAK-TUNNEL  
3/16" = 1'-0"



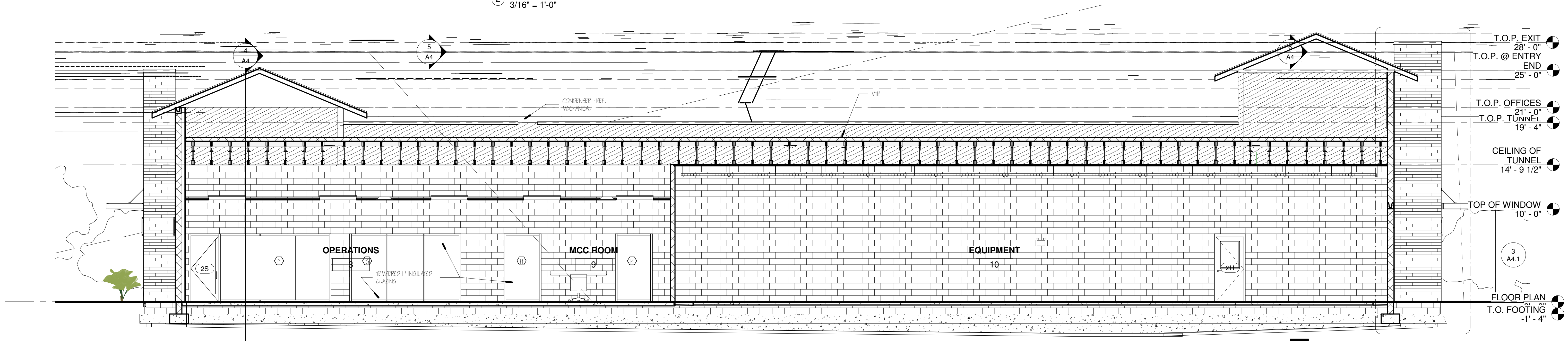
4 SECTION OPS-LOADING  
3/16" = 1'-0"



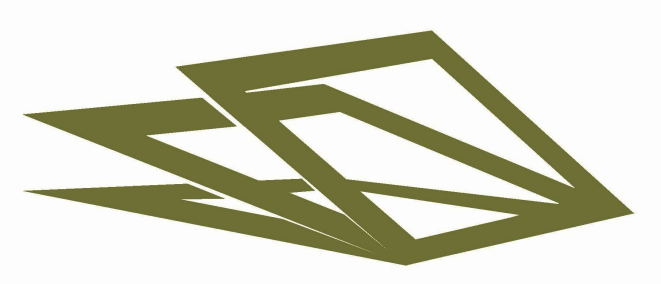
3 SECTION AT OPERATIONS-OFFICE-EQUIPMENT  
3/16" = 1'-0"



2 SECTION THRU OPERATIONS-EQUIPMENT  
3/16" = 1'-0"



1 SECTION THRU LOADING-TUNNEL  
3/16" = 1'-0"

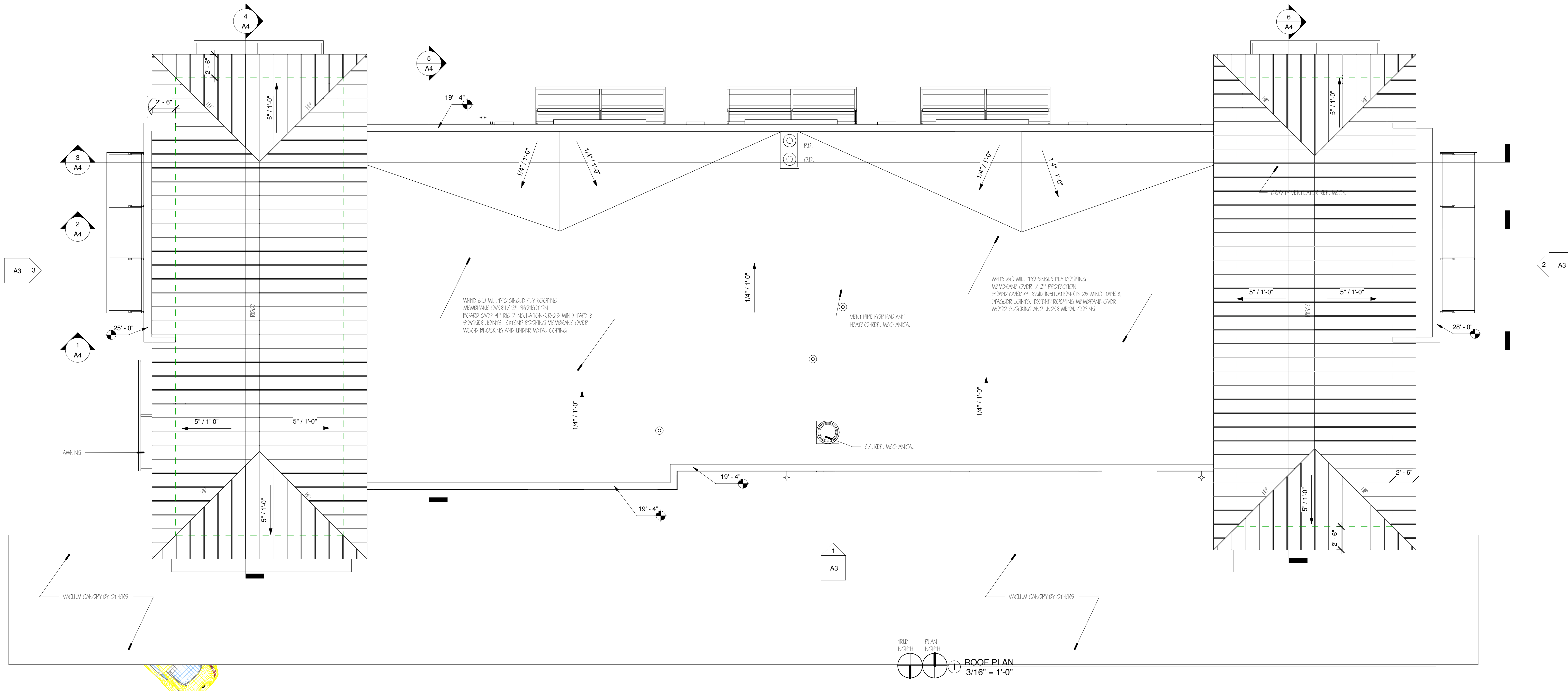


TREY LUCAS ARCHITECTURE

o: 404.378.7431  
c: 404.307.0771  
e: treyl@treylucas.com  
www.treylucas.com

Owner  
Kiwi Land Holding, LLC  
221 Commercial Blvd  
Suite 202  
Lauderdale by the Sea, FL 33308  
954.938.7211

Kiwi Express Car Wash P20-109  
2080 SW Gatlin Blvd  
Port St. Lucie, FL 34953



| DATE                         | REVISION       | NUMBER |
|------------------------------|----------------|--------|
|                              |                |        |
|                              |                |        |
|                              |                |        |
| 12/11/2020                   |                |        |
| <b>ROOF PLAN AND DETAILS</b> |                |        |
| Project Number               | Project Number |        |
| Date                         | 12/11/2020     |        |
| Drawn By                     | Author         |        |
| Checked By                   | Checker        |        |
| <b>A5</b>                    |                |        |
| Scale                        | 3/16" = 1'-0"  |        |