

1.0 Cover Letter

DataWorks Plus
728 North Pleasantburg
Greenville, SC 29607
ph: 864-672-2780
fax: 864-672-2787
www.dataworksplus.com

October 26, 2023

Port St. Lucie Police Department

Proposal #23-1026-01

Ref: Additional Evolution RapidID Edge Devices (Configured as All-In-One device)

To Whom it May Concern:

Dataworks Plus is pleased to provide the following proposal for 37 additional FDLE FALCON RapidID Edge Device (RID) Software and fingerprint scanners. The proposed Evolution device is priced as an all-in-one RapidID device. The device will use your provided WiFi hot spot in the patrol car or a cellular data plan from Verizon/AT&T/Mobile to access to the RapidID server software located at your department. The RapidID Server software will then use CJNET to submit fingerprints to the FDLE RapidID system.

When used as an all-in-one device the fingerprint search responses are displayed on the Evolution RapidID device, therefore it does not need to be paired to a computer. The unit can be passed around to different officers very easily since it is not dedicated to a specific laptop. The operator logs into the device with user name, password and fingerprint. This method meets the FBI CJIS Security policy for mobile devices.

The RID edge device detailed in this proposal has been certified by FDLE to connect to and register with the Falcon Rapid ID system. *The Evolution RapidID device is also compatible with your existing Dataworks RapidID server software.*

Dataworks plus is also the only vendor that can use RapidID software that is compatible with the existing RapidID server software. Dataworks is the developer, owner and sole provider.

Order Information: Please email your purchase order to my attention (rjohnson@dataworksplus.com).

Please call if I can help in any way! My mobile telephone number is 864.430.7981.

Sincerely,



Rick Johnson
Vice President

2.0 Executive Summary

2.1 *DataWorks Plus Company Background*

DataWorks Plus is a privately held company headquartered in Greenville, SC. Our customer base includes over 1,800 state and local agencies, both large and small, in approximately 47 states.

In addition to our headquarters located in Greenville, SC, DataWorks Plus has sales and support offices located in Northern California, Buffalo NY, Fairfax VA, Philadelphia, PA and Houston, TX and service offices in Philadelphia PA, Harrisburg PA, New York City NY, Northern CA, Southern CA, and Tampa, FL. The DataWorks Plus 24 hour customer support center is located in Greenville, South Carolina.

DataWorks Plus has a very large customer base, ranging from small agencies to state wide systems. A few of our large DataWorks Plus customers include:

- State of Alabama
- State of Georgia
- State of New York
- State of Michigan
- State of Pennsylvania
- State of South Carolina
- State of Maryland
- State of Nevada
- State of Virginia
- State of Tennessee
- State of Minnesota
- Country of New Zealand
- Los Angeles County Sheriff's Office
- Chicago Police Department
- San Diego County SO (CA)
- New York City PD (NY, NY)
- Philadelphia Police Department (PA)
- Sacramento County SO (CA)
- Wayne County SO (Detroit MI)
- San Francisco County SO (CA)
- Denver Police Department (CO)

Our Florida customers include:

NOTE: CUSTOMERS IN BOLD HAVE PURCHASED RAPID ID DEVICES (Over 3,800 Dataworks Rapid ID devices have been sold in Florida)

- | | |
|--|------------------------------------|
| • Florida Department of Law Enforcement (FDLE) | • Altamonte Police Department |
| • Florida Highway Patrol (FHP) | • Apopka Police Department |
| • Florida Department of Transportation | • Baker County Sheriff's Office |
| • Florida Department of Agriculture | • Bay County Sheriff's Office |
| • Florida Department of Environmental Protection | • Belleview Police Department |
| • Florida Fish and Wildlife Commission | • Boca Raton Police Department |
| • Florida Department of Corrections | • Bradford County Sheriff's Office |
| • Florida State Attorney's Office | • Brevard County Sheriff's Office |
| • Florida Virtual School | • Broward County Sheriff's Office |
| • Alachua County Sheriff's Office | • Calhoun County Sheriff's Office |

DataWorks Plus is dedicated to providing and supporting products designed specifically for the Law Enforcement and Criminal Justice markets. Please visit our web site for a complete list of products and services (www.dataworksplus.com).

2.2 The DataWorks Plus Difference

2.2.1 Support of Multiple Vendor's Hardware

DataWorks Plus has taken a different approach from other RapidID vendors. Our RapidID software was designed to support fingerprint scanner hardware from various hardware manufacturers. ***This allows DataWorks Plus to take an independent, open, and objective approach when recommending the fingerprint scanners to meet the specific needs of each customer.***

This approach provides your agency with total flexibility to select the best fingerprint scanner for a wide variety of applications. RapidID systems often requires different fingerprint scanners for different applications (i.e. one size does not fit all). This multi-vendor approach provides your agency with the opportunity to select the best hardware that is available today, and in the future without being tied to a specific hardware vendor.



2.2.2 EXCEPTIONAL CUSTOMER SUPPORT


DataWorks Plus highly encourages you to call as many DataWorks Plus customers as possible to validate that our customers are extremely pleased with our people, our products, and our support. You will hear over and over again that our driving force is centered on total customer satisfaction.

The DataWorks Plus Support Center is located at our company's headquarters in Greenville, South Carolina. DataWorks Plus trains every in-house and regional support engineer providing these individuals with the tools and information needed to ensure superior system operation. The Support Center can be contacted via email, DataWorks Plus' Support Website, and a toll-free phone number. A three year standard warranty (Monday through Friday, 8:00am to 5:00pm excluding holidays) is included in the proposed price. DataWorks Plus' Customer Support Center is available to receive calls for assistance via our toll free line. If a technician is not available to answer the call, the call will normally be returned with within twenty minutes, and guaranteed to be returned within one hour.

Support Center technicians log each call and assist in the resolution of problems such as verification, diagnosis, correction of material errors, and defects in the hardware, software, and

3.0 Configuration and Price Schedule

Evolution RapidID Device

FDLE FALCON RID Device(s)	Qty	Unit Cost	Total Price
FALCON Rapid ID Edge Device Software with Evolution Finger Scanner STATE CONTACT MODEL NUMBER: RAPID-DW-EVOL <ul style="list-style-type: none"> • FDLE Certified DataWorks Plus Edge Device Software (all-in-one) • Evolution Wireless Single Fingerprint Scanner (500dpi, FAP 30 Certified Sensor w/ Light Emitting "Smart Touch" Fingerprint Sensor) • Integrated Samsung Smart Phone • Verizon/AT&T/Tmobile cellular data plan or WiFi hotspot to be provided by customer • Integrated Digital Camera • USB Cable • Wall Charger • System Administrator Documentation • User Documentation 	37	\$3,164.00	\$117,068.00
			
Items needed to meet FBI CJIS Security Requirements: <ul style="list-style-type: none"> • Two-Factor Fingerprint Login annual subscription (\$120.00 per device) • Secure Mobile Data Service Annual Subscription - Mobile Device Management Software (MDM) (\$144.00 per device). 	37	\$264.00	\$9,768.00
RapidID Device Manager Server Software: State Contract Model Number: RAPID-DM1	0	Use Existing RapidID Server Software	\$0.00
Professional Services: <ul style="list-style-type: none"> • Project Management • Delivery • Three Year Standard Warranty NOTE: Customer is responsible for installing the Wireless Fingerprint Scanners and providing user training.	1	Included	Included
TOTAL			\$126,836.00
SPECIAL PROMOTION DISCOUNT			(\$23,236.00)

Evolution Device to Function as an All-In-One Device

Benefits of Using Evolution as an All-in-One Device

The versatile Evolution is proposed to function as an all-in-one RAPID-ID device. When used as an all-in-one, fingerprints are captured with the Evolution device and the search results are sent back to the Evolution. Using Evolution all-in-one functionality eliminates the need to pair the device to an MDT using BlueTooth. It also eliminates the requirement for the officer to go back to the patrol car to see the FBI and FDLE fingerprint search results. The device can be passed easily to multiple users as any certified user has the ability to log onto the device with user name, password and fingerprint.

EVOLUTION

All-in-One RAPID-ID Device

View Detailed Search Results on the Evolution Device

Eliminates Need to Pair the Device to an MDT

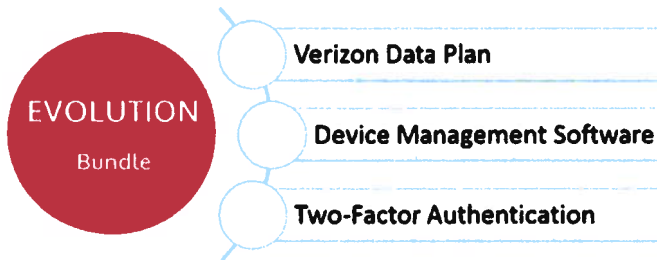
Eliminates Officer Returning to Car to View FBI & FDLE Results

Easily Transfer Evolution to Multiple Users

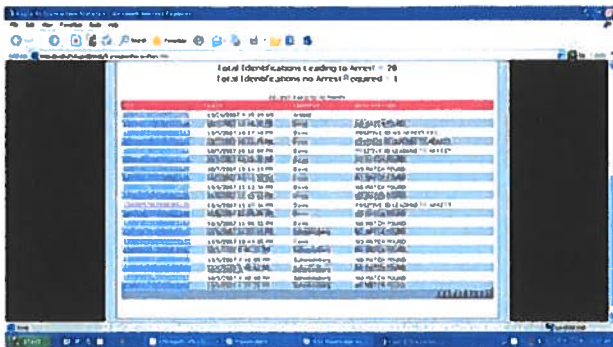
Bundle Option Makes Evolution Ready to Use Out of the Box

To use Evolution as an all-in-one device, a cellular data plan or access to WiFi is required. Your agency must also adapt a method for the device to perform two factor authentication to meet the FBI CJIS security policy. DataWorks Plus can provide a turn-key system with Verizon Data, MDM, and Two-Factor Authentication Bundle that includes:

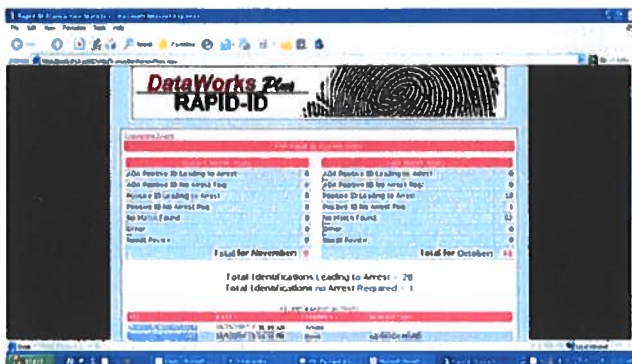
- Verizon Data Plan
- Device Management Software
- Two-Factor Authentication using the Fingerprint Reader on the Device (i.e. the user captures their fingerprint to logon to the device)



With this bundle, Evolution is ready to use and compliant with the FBI CJIS security policy - out of the box. If the bundle is purchased, DataWorks Plus will provide turnkey installation and support for the device. This proposal includes the Device Management Software and Two-Factor Fingerprint Authentication software.



10) Reporting and Statistics – Use a Web Browser Application to track the success of RapidID searches



- 11) Message Queue - Send messages from server to each edge device
- 12) Move RapidID devices from computer to computer
- 13) Point and Click Software Installation
- 14) Automated Software Updates
- 15) Automated Weekly Status Reports
- 16) Hardware Device Independent – Implement fingerprint readers using multiple vendor's fingerprint scanners