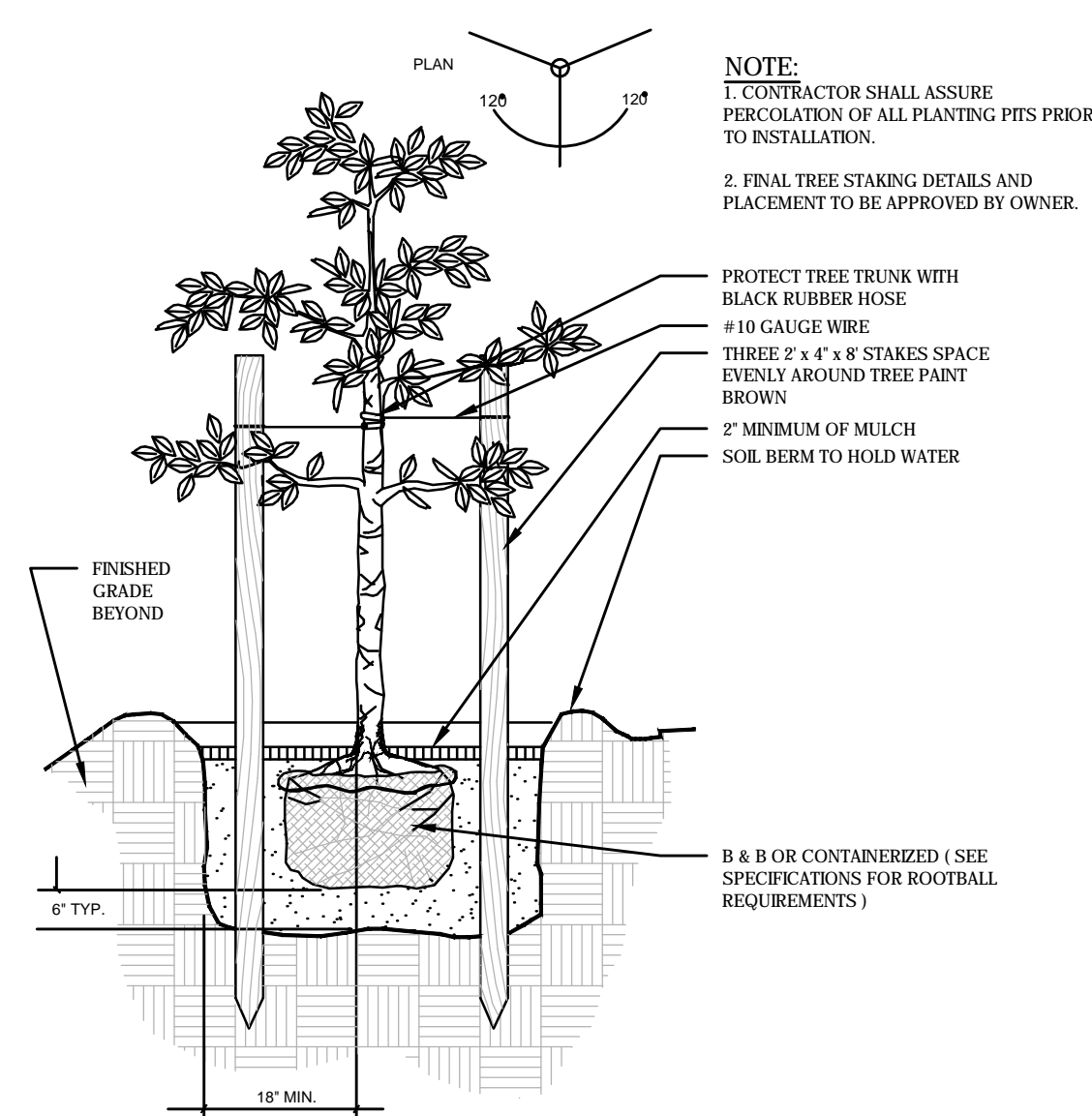
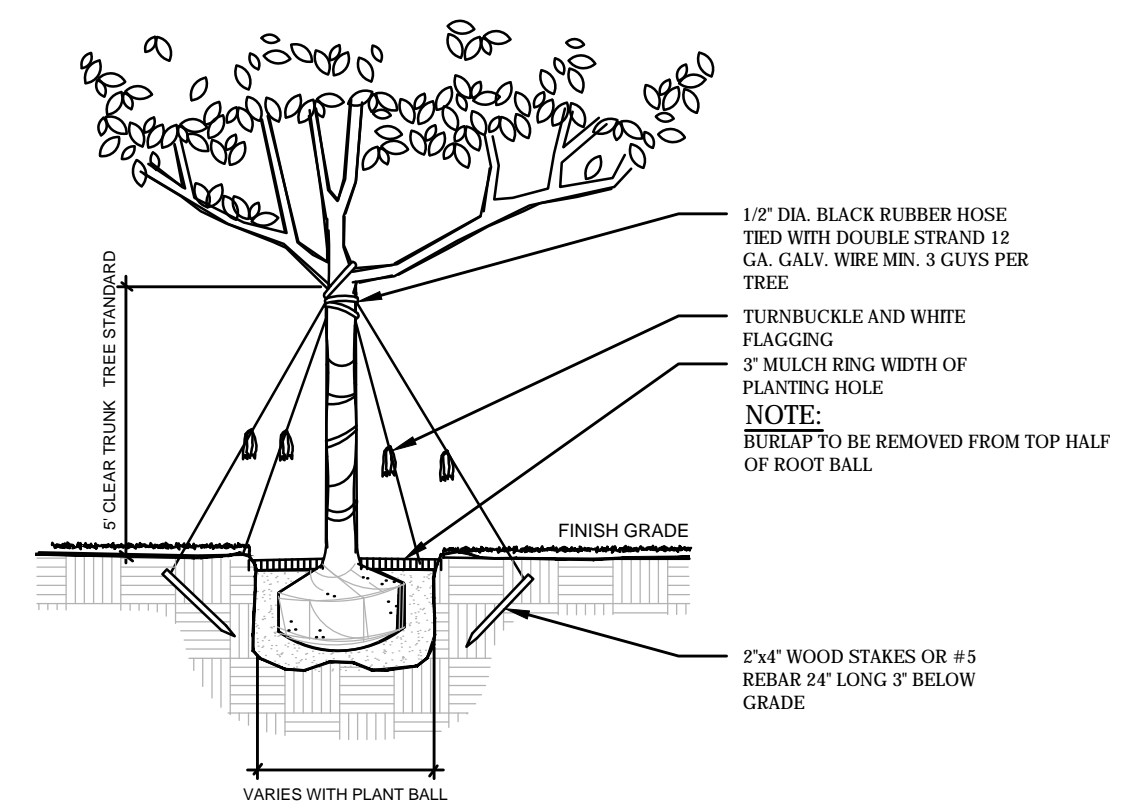


PLANTING DETAILS

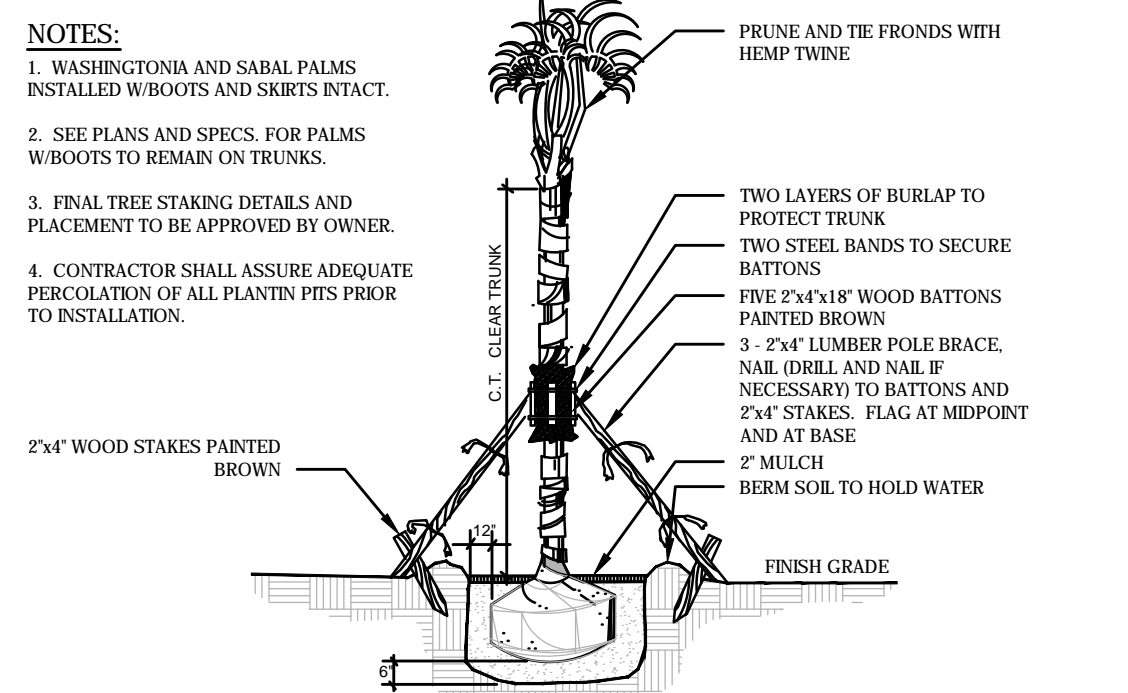
N.T.S.



SMALL TREE GUYING DETAIL
 Detail for trees smaller than 2" cal. NOT TO SCALE



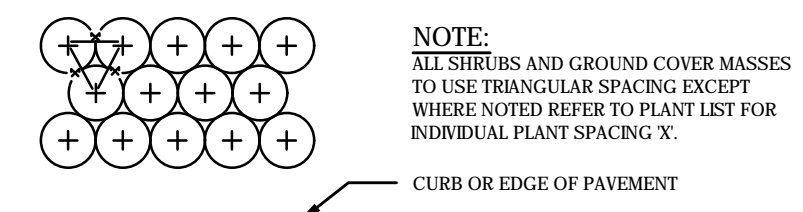
LARGE TREE GUYING DETAIL
 Detail for trees greater than 2" cal. NOT TO SCALE



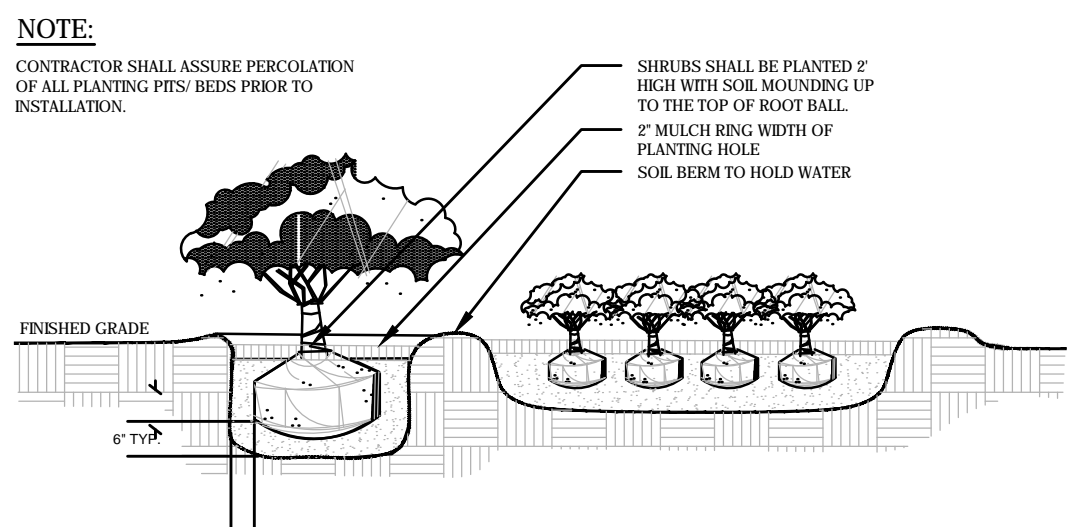
PALM TREE GUYING DETAIL
 NOT TO SCALE

Legend:

■ Limits of Phase 1 Plat 2



TYPICAL PLANT SPACING
 NOT TO SCALE



SHRUB AND GROUND COVER DETAIL
 NOT TO SCALE

LANDSCAPING & UTILITIES

- All landscape plans must show the location of existing or proposed utility lines that could be impacted by the vegetation being planted. no landscaping shall be planted in such a manner as to adversely affect drainage or underground or above ground utility facilities.
- No tree shall be planted where it could, at mature height, conflict with overhead power lines. Trees planted within any easement with overhead utilities shall comply with the latest edition of FPL's publication "Plant the Right Tree in the Right Place", and take into consideration the mature height and spread of the species beneath or adjacent to existing overhead utilities. Where overhead utilities exist, small trees, with a mature height of less than twenty (20) feet may be substituted for required shade trees at a ratio of 1:1.
- All landscaping within ten (10) feet of underground or above ground Port St. Lucie Utility System Department (PSLUSD) utility infrastructure shall comply with PSLUSD technical specifications, policies and codes.
- Trees shall not be planted within ten (10) feet of any PSLUSD underground infrastructure.
- Tree of species whose roots are known to cause damage to public roadways, utilities, sidewalks, or other public works shall not be planted closer than 10 feet to those public works.
- In those instances where a tree(s) is planted closer than five (5) feet from a sidewalk, or structure, a root barrier(s) shall be installed. Root barriers for trees shall be installed along the edge of structure, paving, or curb. The root barrier shall be a minimum of twenty-four (24) inches deep, but depending on size, location, and species of tree to be planted, a larger barrier may be required. The root barrier shall be installed with twenty (20) linear feet, centered from the trunk, for large trees and fifteen (15) linear feet for smaller trees. All root barriers shall be linear.
- Vertical Clearance Over a Roadway. Trees that encroach into roadways shall be maintained in accordance with the St. Lucie County Fire District Fire Prevention Code.
- No landscaping within five(5) feet of any PSL utility lines, only sod.
- Trees to be 10' min. from street lights.
- Street trees to be planted fifty(50) to sixty(60) feet on center and minimum four(4) feet from back of curb. Where necessary, spacing may be adjusted to accommodate curb cuts, fire hydrants, driveways or other necessary utilities.
- In the event that the required street tree spacing can not be met due to a utility or hardscape conflict, a street tree can be installed on a lot adjacent to the right of way line to satisfy the requirement. When lots are platted, each such lot will require a Tree Easement to be placed, in favor of the Belterra Homeowners Association, Inc.

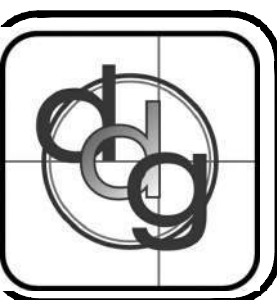
GENERAL LANDSCAPE NOTES

- Landscape Contractor shall be responsible for all materials and plants as called for on the landscape plans. The list of plant quantities accompanying the plans shall be used as a guide only. Contractor shall verify all quantities and report any discrepancies at time of bidding.
- All plant material shall be graded Florida No. 1 or better, as outlined by "Grades and Standards for Nursery Plants", Florida Department of Agriculture and Consumer Services, division of Plant Industry.
- All planting shall be top dressed with a minimum 2" pine bark mini nuggets.
- The Landscape Contractor shall be wholly responsible for the stability and plumb condition of all trees and shrubs and shall be legally liable for any damage caused by instability of plant material. The staking method, if not shown by detail on this plan, shall be approved by the owner or his/her authorized representative.
- Every possible safeguard shall be taken to protect existing trees that are shown on the landscape plan to be preserved.
- The Landscape Contractor is responsible for cleaning all debris associated with their work.
- Height and spread specifications refer to the overall plant form. Singular branches may not be used to meet minimum requirements. Tree caliper size to be measured 12" above grade.
- All landscaping shall be installed according to accepted commercial planting procedures. Soil, shall be free of limerock, pebbles, or other construction debris.
- Ball & burlap material shall be an acceptable alternative to container grown trees.
- Occasionally there is the potential for site modification due to revised field grading, clearing of existing tree canopy or other unforeseen conditions. The Landscape Contractor shall be responsible for informing the Owner and Landscape Architect of site conditions adverse to the healthy establishment of any plant material prior to planting so that a resolution may be achieved.
- The Landscape Contractor shall be responsible for arranging a pre-construction meeting with the Owner and Landscape architect in order to address and clarify any questions, concerns and/or conditions related to these drawings or the existing site.
- Landscape Contractor shall use appropriate container size to meet minimum plant height, if minimum plant height can not be met with specified container size.
- Certification by Landscape Architect. The landscape architect shall certify in writing to the Director of Planning and Zoning that the landscaping and irrigation have been installed in accordance with the landscaping and irrigation plans approved by the Site Plan Review Committee. No certificates of occupancy or similar authorization will be issued unless the certification has been received verifying the landscaping and irrigation meet the requirements provided herein, and are in conformance with the approved landscape and irrigation plans for the project. This requirement shall not apply to single-family homes.
- Plant Materials. Plant material used in conformance with the provisions of this chapter shall conform to the most recent standards for Florida No. 1 or better as given in "Grades and Standards for Nursery Plants", State of Florida, Department of Agriculture, or equal thereto. Trees and plants used in a required landscape design shall be cold-tolerant, drought-tolerant, or appropriate for the environmental setting in which they are to be planted. The "Waterwise South Florida Landscapes" plant guide, published by the South Florida Water Management District, as amended, should be used to determine appropriate vegetation. Plant materials which are known to be intolerant of paving environments or temperature below 32° F or 0° C, or whose physical characteristics may be injurious to the public or which produce a quantity and/or quality of debris so as to present maintenance difficulties shall not be specified for use.
- Plant materials shall be approved native and suitable non-native trees, shrubs, and ground covers that require minimal maintenance when planted under appropriate conditions. Appendix D: City of Port St. Lucie Suggested Tree List and the South Florida Water Management District "Waterwise South Florida Landscapes" plant guide shall be used as a guide for choosing plant materials.
- Trees shall be a species having an average mature spread of crown greater than 20 feet. Trees shall have a trunk that is maintained in a clean condition with over five feet of clear wood (no branches).

daly design group inc.
 Urban Planning, Landscape Architecture, Project Management, Development Consulting
 913 N Pennsylvania Ave, Winter Park, FL 32789 (407) 740-7373 www.dalydesign.com

REV.	DATE	DESCRIPTION

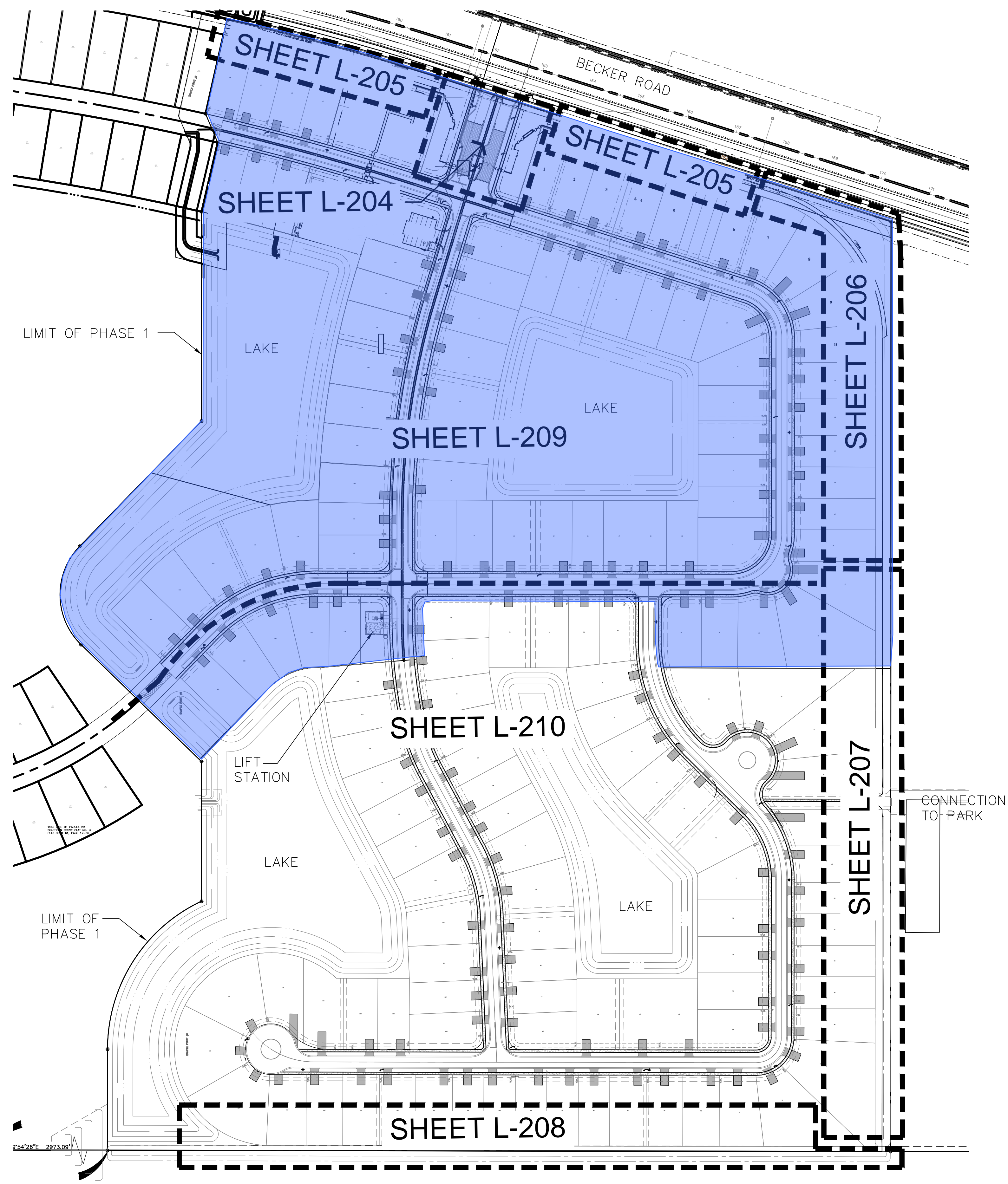
PLANT DETAILS / NOTES
 LANDSCAPE CONSTRUCTION PLANS
 Belterra Tradition
 Port St. Lucie, Florida



CITY OF PORT ST. LUCIE PROJECT#
 P-21-271

Date: _____

PROJECT NO.
 1906
 SCALE
 DATE
 NOV 2019
 SHEET
 L-002

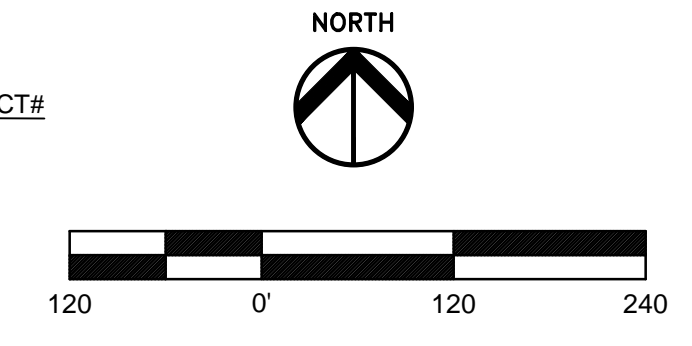


Legend:

■ Limits of Phase 1 Plat 2

KEY

CITY OF PORT ST. LUCIE PROJECT#
P-21-271

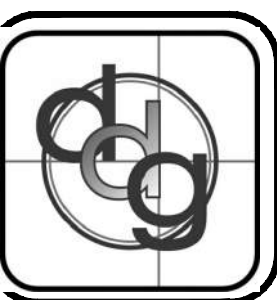


Date:

7	2.10.22	REV. PER P&Z COMMENTS
6	1.11.22	REV. ADD FPL BOX/MOVE FENCE, ART L.A.
5	07.14.21	REV. PER COMMENTS GH
4	03.25.21	REV. STREET TREES PER COMMENTS
3	03.23.21	REV. WATER METERS PER COMMENTS
2A	03.16.21	REV. STREET TREES PER COMMENTS
1	01.29.20	REV. PER CITY COMMENTS

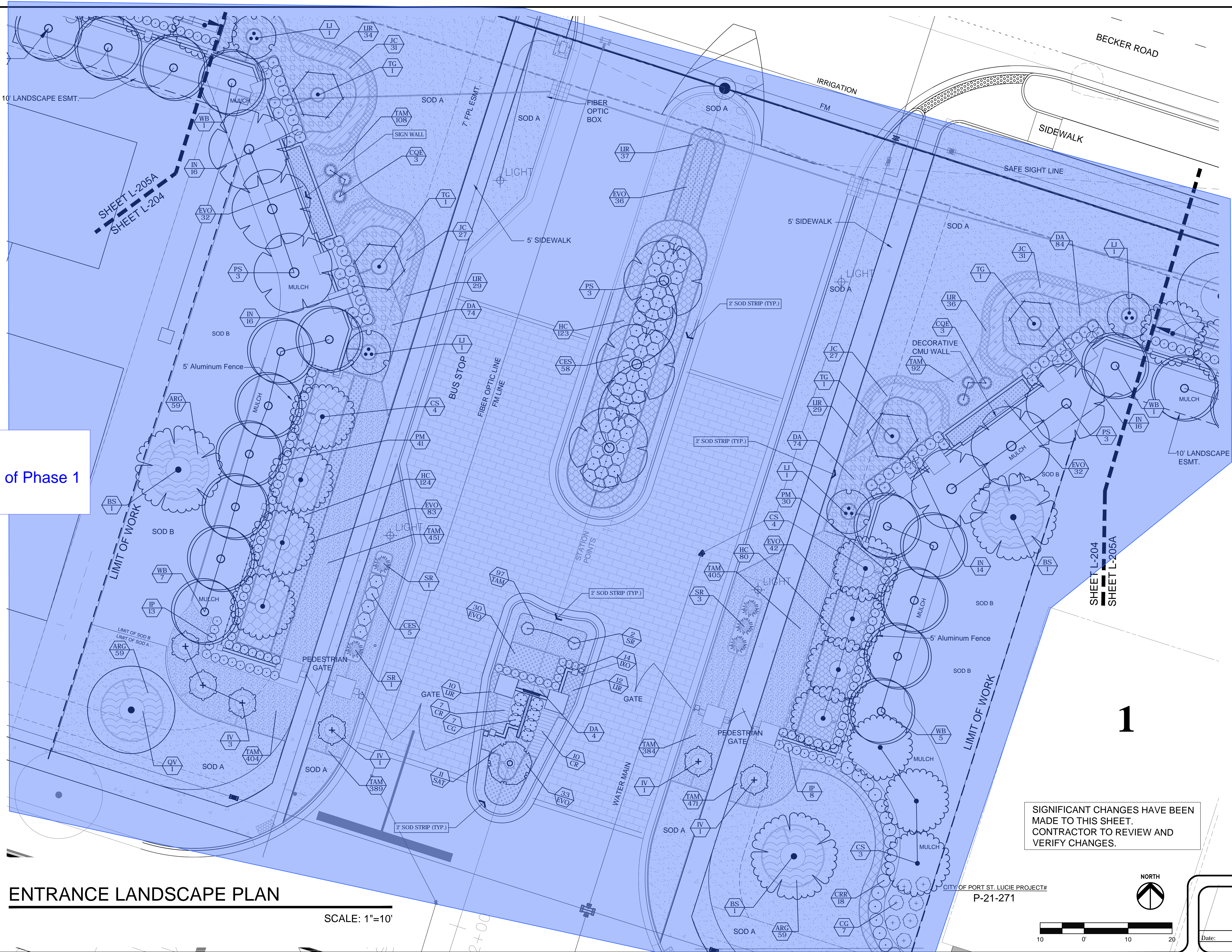
REV.	DATE	DESCRIPTION	BY

KEY SHEET
LANDSCAPE CONSTRUCTION PLAN
Belterra Tradition
Port St. Lucie, Florida



PROJECT NO.
1906
SCALE
DATE
NOV 2019
SHEET
K-100

daly design group inc.
Urban Planning, Landscape Architecture, Project Management, Development Consulting
913 N Pennsylvania Ave, Winter Park, FL 32789 (407) 740-7373 www.dalydesign.com



Legend:

Limits of Phase 1 Plat 2

ENTRANCE LANDSCAPE PLAN

SCALE: 1"=10'

SIGNIFICANT CHANGES HAVE BEEN MADE TO THIS SHEET. CONTRACTOR TO REVIEW AND VERIFY CHANGES.

CITY OF PORT ST. LUCIE PROJECT# P-21-271

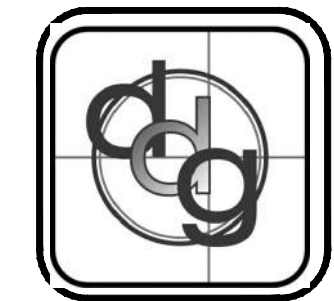
NORTH

0 10 20

- 7 2.10.22 REV. PER P&Z COMMENTS
- 6 1.11.22 REV. ADD FPL BOX/MOVE FENCE, ART LA.
- 5 07.14.21 REV. PER COMMENTS
- 4 03.25.21 REV. STREET TREES, PER COMMENTS
- 3 03.23.21 REV. WATER METERS, PER COMMENTS
- 2A 03.16.21 REV. STREET TREES, PER COMMENTS
- 2 03.01.21 REV. STREET TREES, PER CITY COMMENTS
- 1 01.29.20 REV. PER CITY COMMENTS

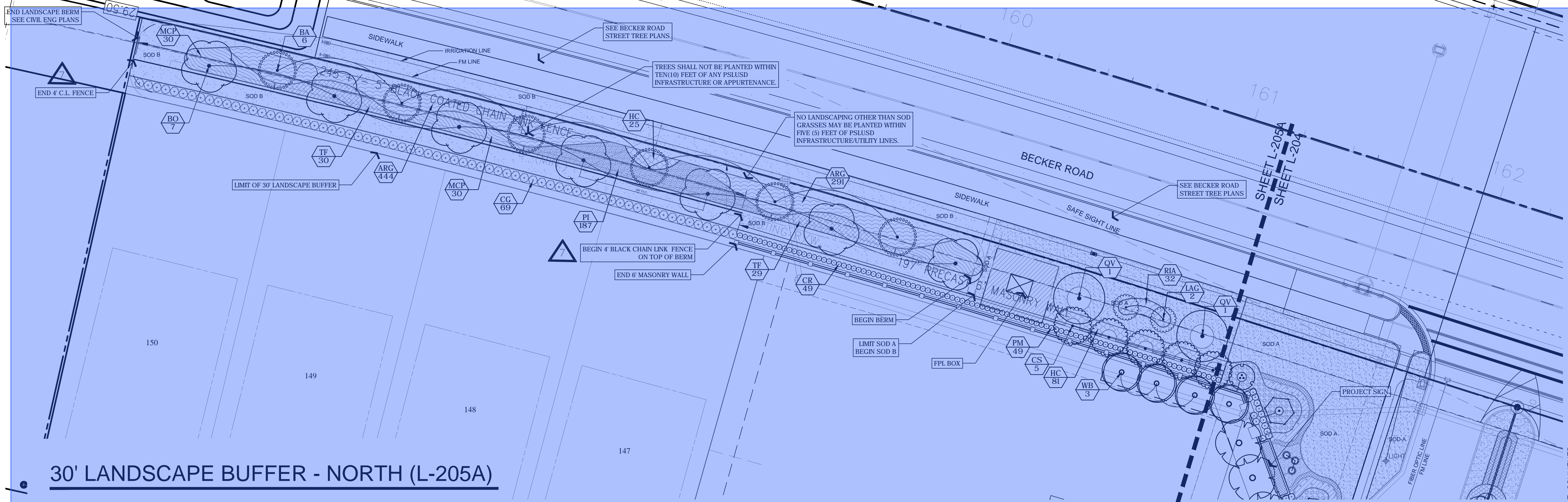
REV.	DATE	DESCRIPTION	BY

ENTRANCE LANDSCAPE PLAN
LANDSCAPE CONSTRUCTION PLANS
Belterra Tradition
Port St. Lucie, Florida

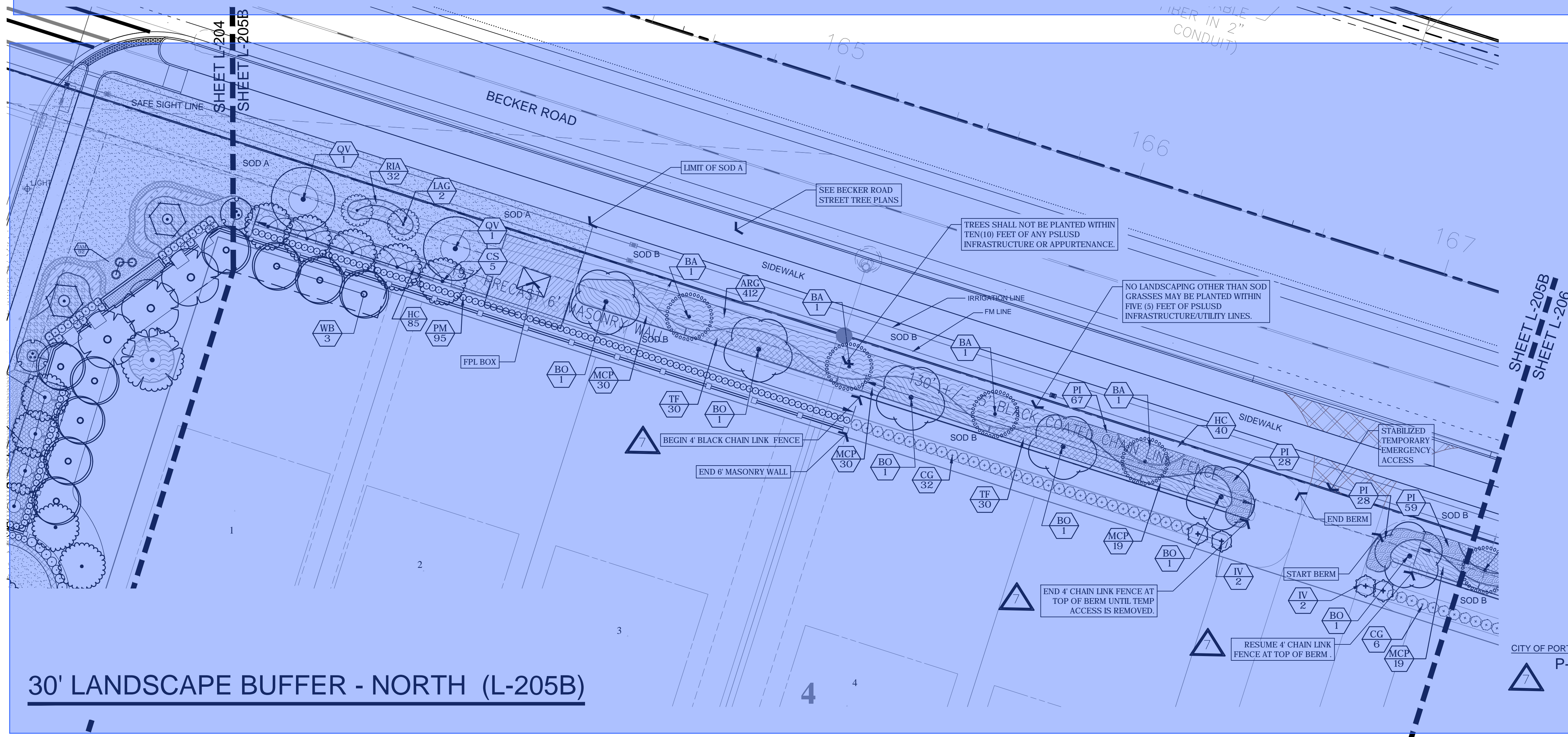


PROJECT NO. 1906
SCALE
DATE DEC 2019
SHEET L-204

daly design group inc.
Urban Planning, Landscape Architecture, Project Management, Development Consulting
913 N Pennsylvania Ave., Winter Park, FL 32789 (407) 740-7373 www.dalydesign.com

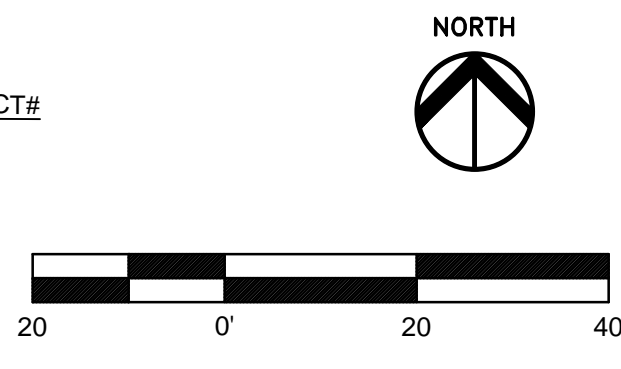


30' LANDSCAPE BUFFER - NORTH (L-205A)



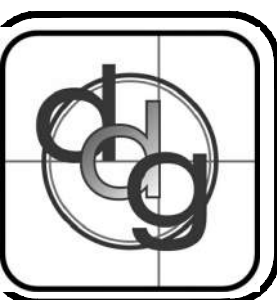
30' LANDSCAPE BUFFER - NORTH (L-205B)

Legend:
 Limits of Phase 1
 Plat 2



7	2.10.22	REV. PER P&Z COMMENTS
6	1.11.22	REV. ADD FPL BOX/MOVE FENCE, ART L.A.
5	07.14.21	REV. PER COMMENTS
4	03.25.21	REV. STREET TREES PER COMMENTS
3	03.23.21	REV. WATER METERS PER COMMENTS
2A	03.16.21	REV. STREET TREES PER COMMENTS
2	03.01.21	REV. STREET TREES PER CITY COMMENTS
1	01.29.20	REV. PER CITY COMMENTS

30' LANDSCAPE BUFFER - NORTH
 LANDSCAPE CONSTRUCTION PLAN
 Belterra Tradition
 Port St. Lucie, Florida

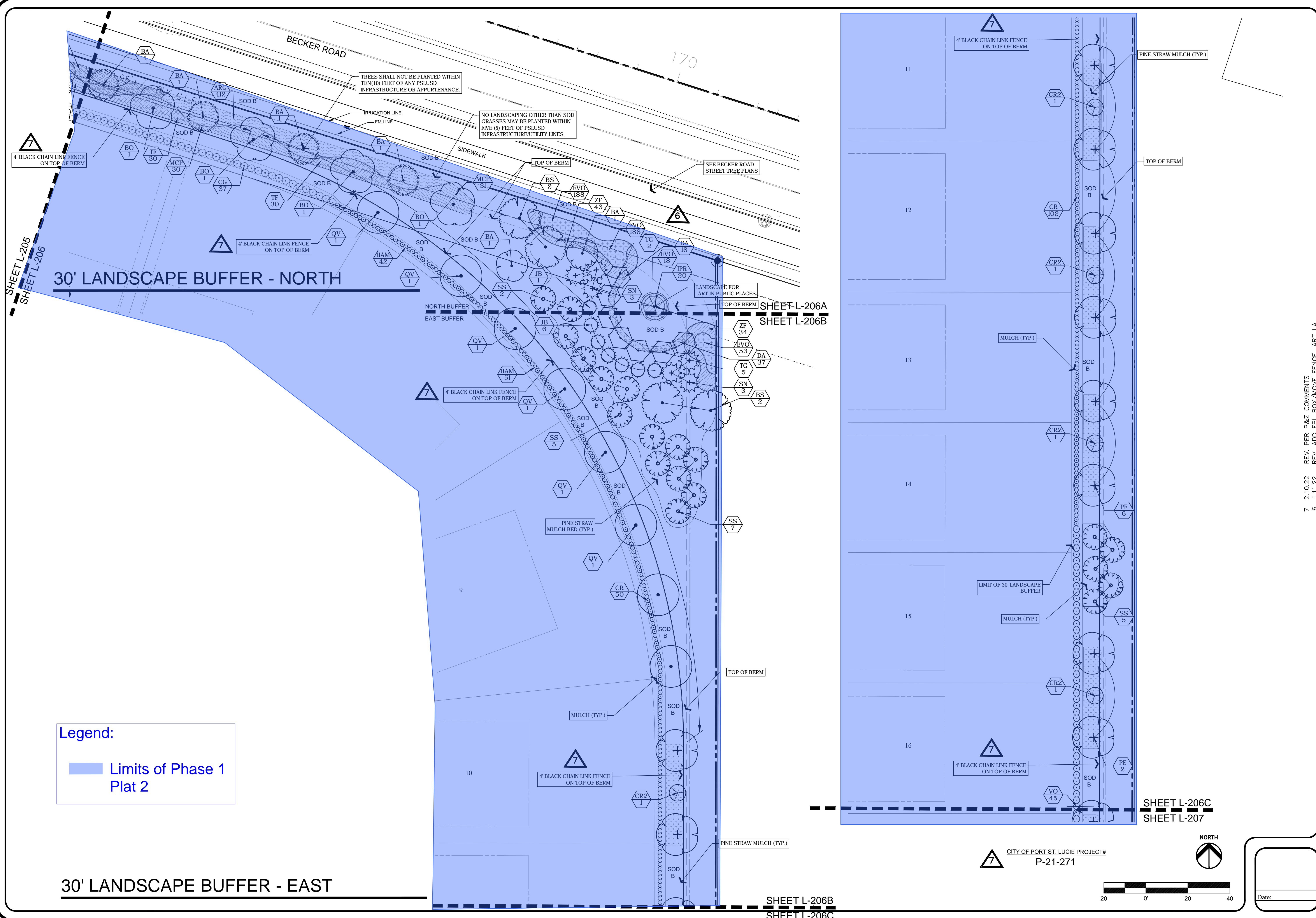


PROJECT NO.
1906
SCALE
DATE
NOV 2019
SHEET
L-205

daly design group inc.
 Urban Planning, Landscape Architecture, Project Management, Development Consulting
 913 N Pennsylvania Ave, Winter Park, FL 32789 (407) 740-7373 www.dalydesign.com

REV.	DATE	DESCRIPTION	BY

CITY OF PORT ST. LUCIE PROJECT#
P-21-271



Legend:
 Limits of Phase 1 Plat 2

30' LANDSCAPE BUFFER - EAST

SHEET L-206B
 SHEET L-206C

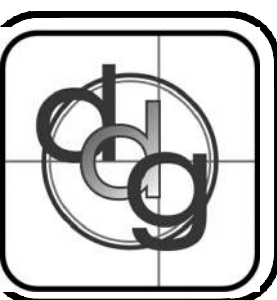
CITY OF PORT ST. LUCIE PROJECT#
 P-21-271



Date: _____

REV.	DATE	DESCRIPTION	BY
7	2.10.22	REV. PER P&Z COMMENTS	
6	1.11.22	REV. ADD FPL BOX/MOVE FENCE - ART L.A.	
5	07.14.21	REV. PER COMMENTS	GH
3	03.23.21	REV. WATER METERS PER COMMENTS	
2A	03.16.21	REV. STREET TREES PER COMMENTS	
2	03.01.21	REV. STREET TREES PER CITY COMMENTS	
1	01.29.20	REV. PER CITY COMMENTS	

30' LANDSCAPE BUFFER - NORTH/EAST
LANDSCAPE CONSTRUCTION PLAN
Belterra Tradition
 Port St. Lucie, Florida




PROJECT NO.
 1906
 SCALE
 DATE
 NOV 2019
 SHEET
 L-206

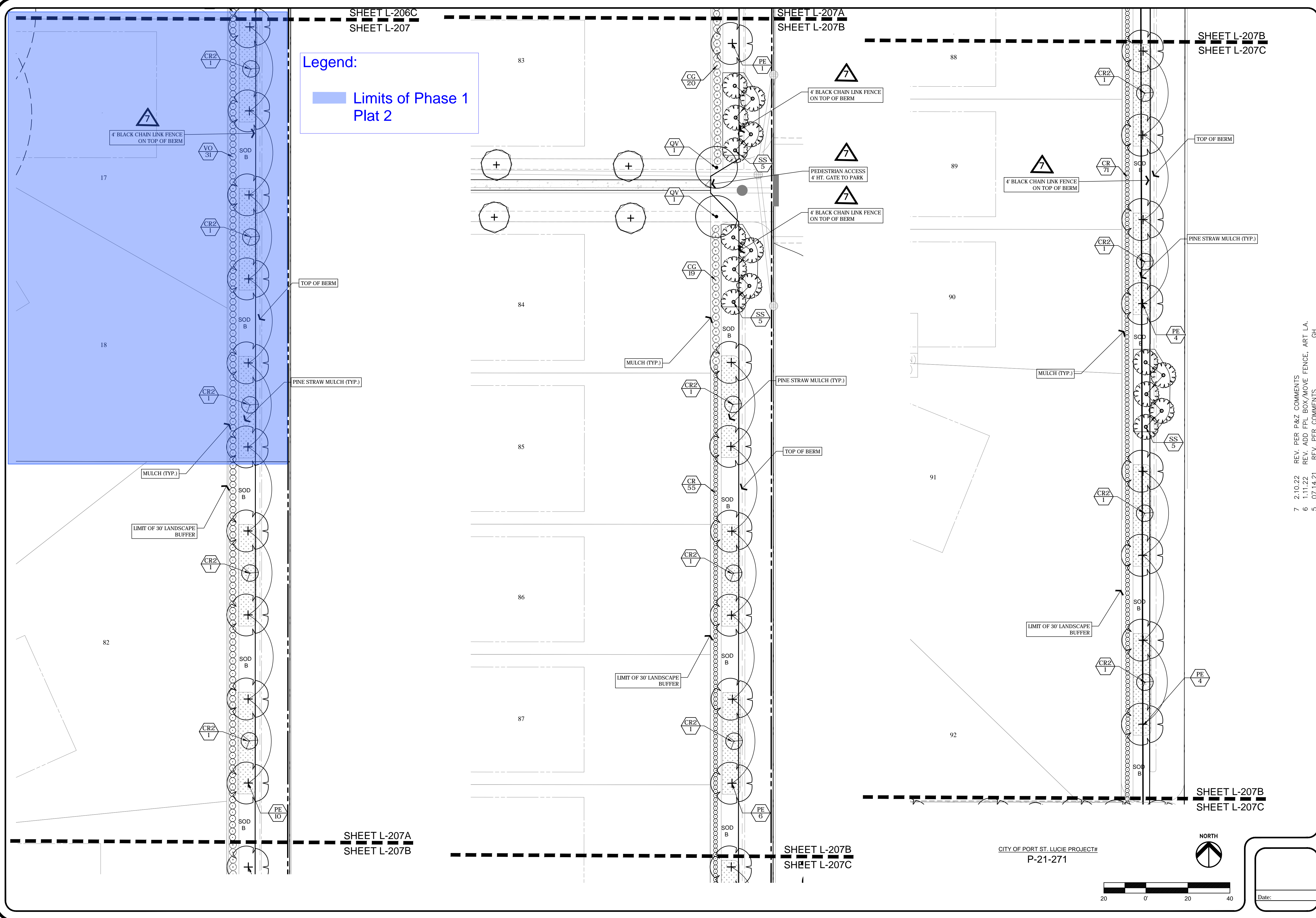
daly design group inc.
 Urban Planning, Landscape Architecture, Project Management, Development Consulting
 913 N Pennsylvania Ave, Winter Park, FL 32789 (407) 740-7373 www.dalydesign.com

SHEET L-206C
SHEET L-207

SHEET L-207A
SHEET L-207B

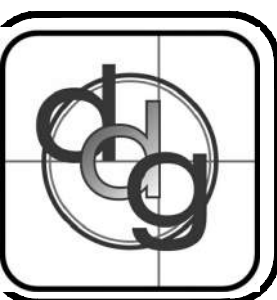
SHEET L-207B
SHEET L-207C

Legend:
 Limits of Phase 1 Plat 2



7	2.10.22	REV. PER P&Z COMMENTS
6	1.11.22	REV. ADD FPL BOX/MOVE FENCE, ART LA.
5	07.14.21	REV. PER COMMENTS GH
4	03.28.21	REV. STREET TREES, PER COMMENTS
3	03.23.21	REV. WATER METERS PER COMMENTS
2A	03.16.21	REV. STREET TREES PER COMMENTS
2	03.01.21	REV. STREET TREES PER CITY COMMENTS
1	01.29.20	REV. PER CITY COMMENTS

30' LANDSCAPE BUFFER - EAST
LANDSCAPE CONSTRUCTION PLAN
Belterra Tradition
 Port St. Lucie, Florida



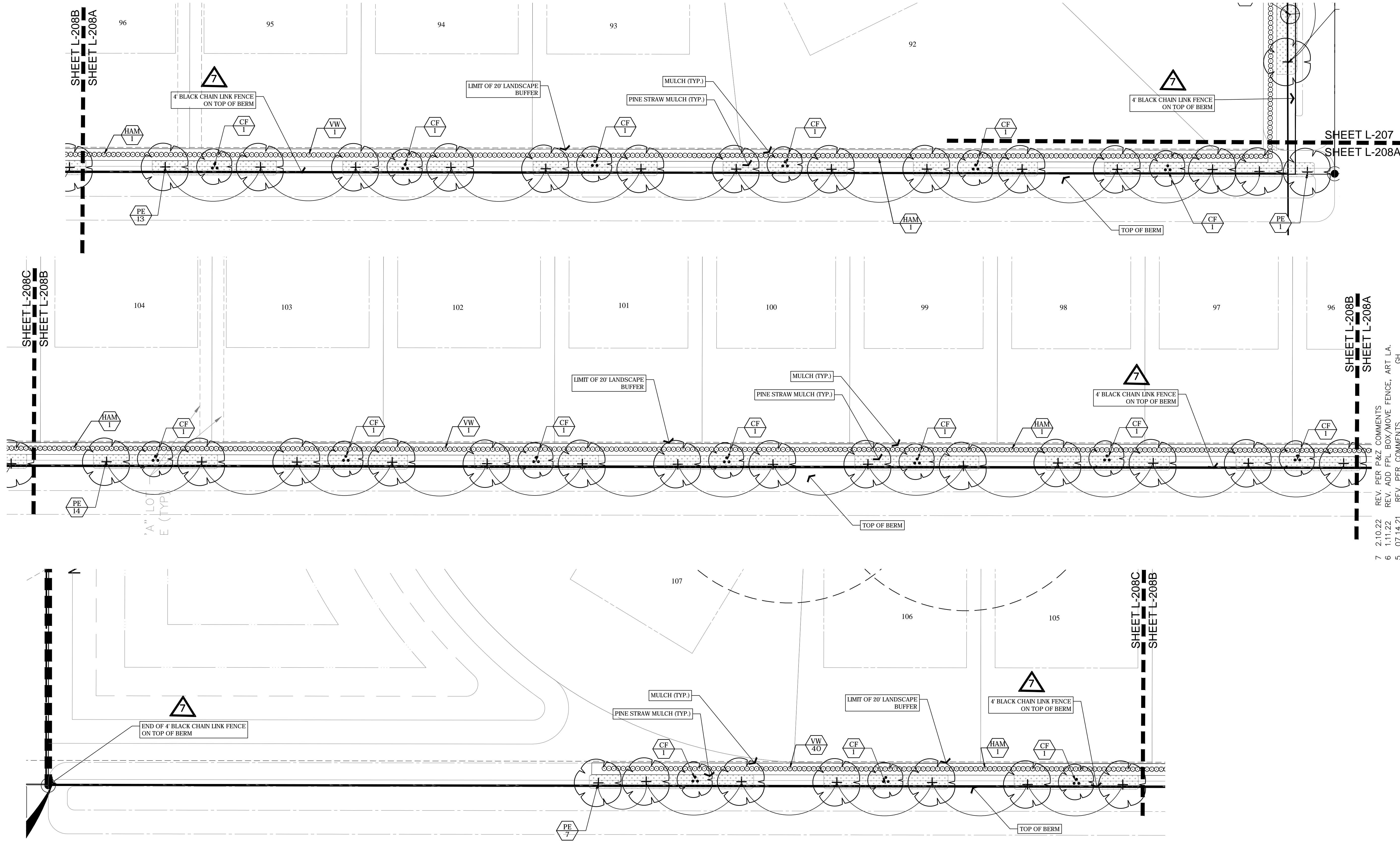
PROJECT NO.
1906
SCALE
DATE
NOV 2019
SHEET
L-207

daly design group inc.
 Urban Planning, Landscape Architecture, Project Management, Development Consulting
 913 N Pennsylvania Ave, Winter Park, FL 32789 (407) 740-7373 www.dalydesign.com

CITY OF PORT ST. LUCIE PROJECT#
P-21-271



Date: _____



SHEET L-208B
SHEET L-208A

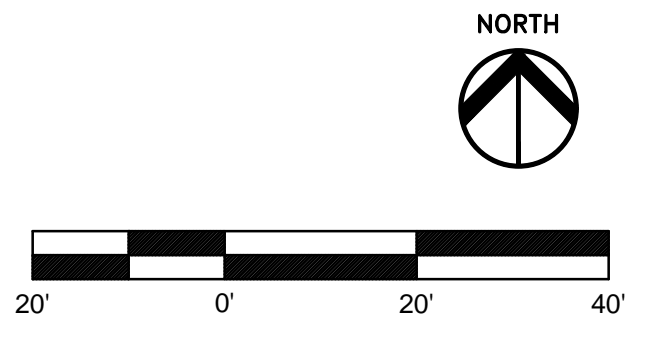
SHEET L-208C
SHEET L-208B

SHEET L-207
SHEET L-208A

SHEET L-208B
SHEET L-208A

SHEET L-208C
SHEET L-208B

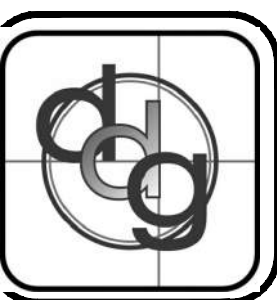

CITY OF PORT ST. LUCIE PROJECT#
P-21-271



Date: _____

7	2.10.22	REV. PER P&Z COMMENTS
6	1.11.22	REV. ADD FPL BOX/MOVE FENCE, ART LA.
5	07.14.21	REV. PER COMMENTS
4	03.25.21	REV. STREET TREES PER COMMENTS
3	03.23.21	REV. WATER METERS PER COMMENTS
2A	03.16.21	REV. STREET TREES PER COMMENTS
2	03.01.21	REV. STREET TREES PER CITY COMMENTS
1	01.29.20	REV. PER CITY COMMENTS

20' LANDSCAPE BUFFER - SOUTH
LANDSCAPE CONSTRUCTION PLAN
Belterra Tradition
Port St. Lucie, Florida



PROJECT NO.
1906
SCALE
DATE
NOV 2019
SHEET
L-208

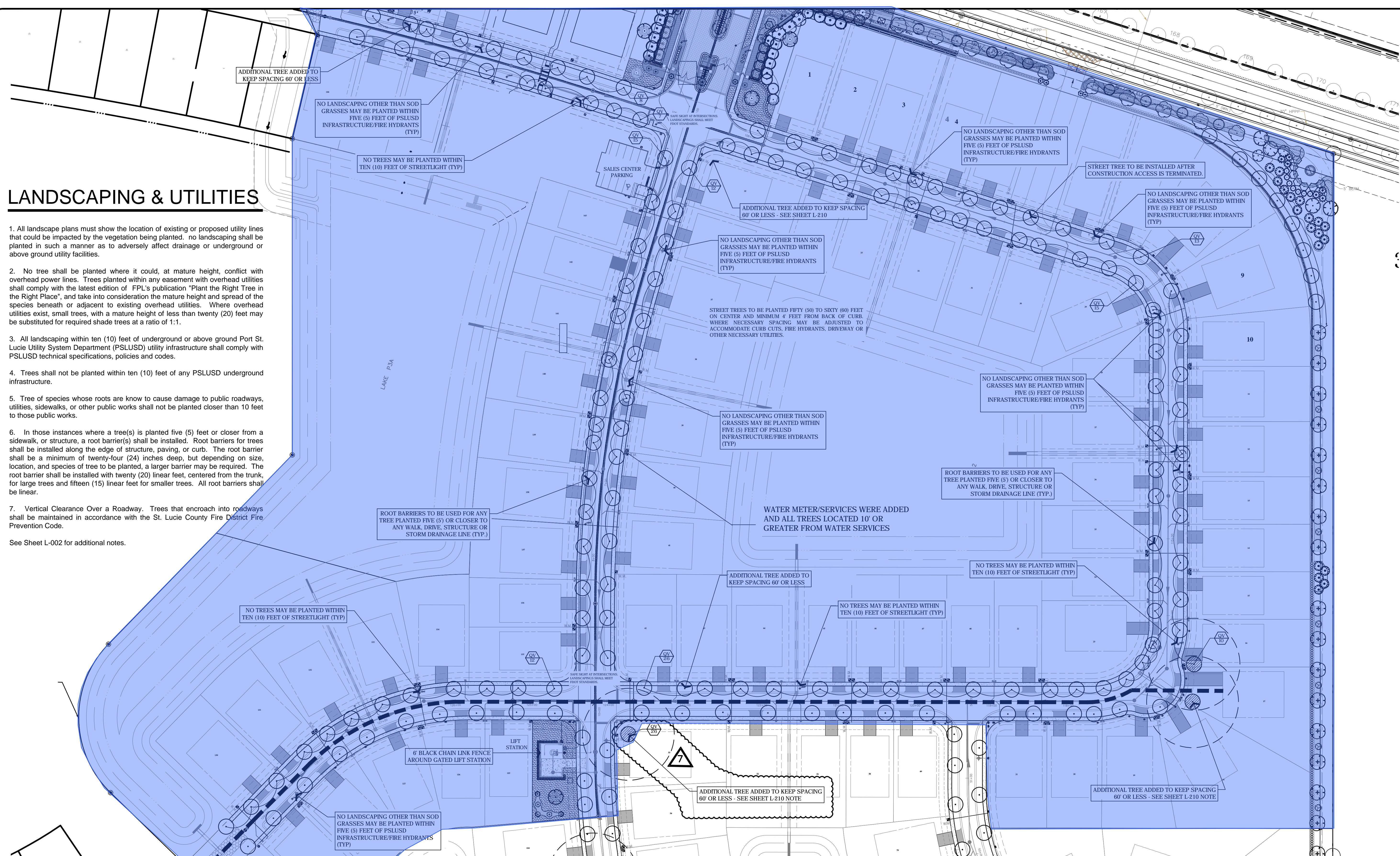
daly design group inc.
Urban Planning, Landscape Architecture, Project Management, Development Consulting
913 N Pennsylvania Ave, Winter Park, FL 32789 (407) 740-7373 www.dalydesign.com

REV.	DATE	DESCRIPTION	BY

LANDSCAPING & UTILITIES

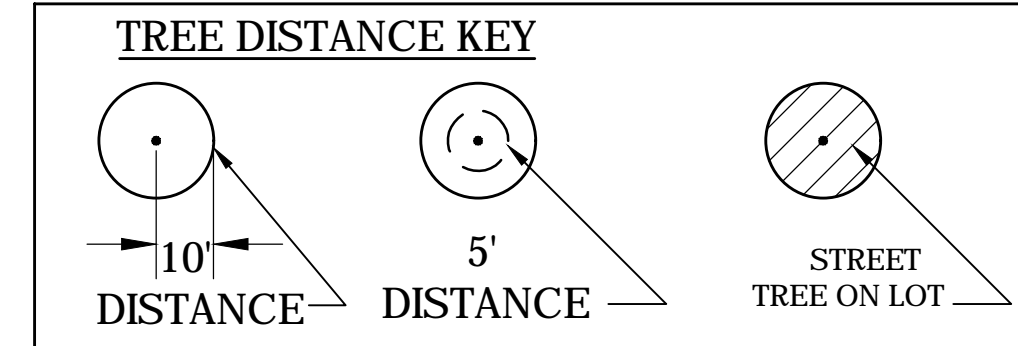
- All landscape plans must show the location of existing or proposed utility lines that could be impacted by the vegetation being planted. no landscaping shall be planted in such a manner as to adversely affect drainage or underground or above ground utility facilities.
- No tree shall be planted where it could, at mature height, conflict with overhead power lines. Trees planted within any easement with overhead utilities shall comply with the latest edition of FPL's publication "Plant the Right Tree in the Right Place", and take into consideration the mature height and spread of the species beneath or adjacent to existing overhead utilities. Where overhead utilities exist, small trees, with a mature height of less than twenty (20) feet may be substituted for required shade trees at a ratio of 1:1.
- All landscaping within ten (10) feet of underground or above ground Port St. Lucie Utility System Department (PSLUSD) utility infrastructure shall comply with PSLUSD technical specifications, policies and codes.
- Trees shall not be planted within ten (10) feet of any PSLUSD underground infrastructure.
- Tree of species whose roots are known to cause damage to public roadways, utilities, sidewalks, or other public works shall not be planted closer than 10 feet to those public works.
- In those instances where a tree(s) is planted five (5) feet or closer from a sidewalk, or structure, a root barrier(s) shall be installed. Root barriers for trees shall be installed along the edge of structure, paving, or curb. The root barrier shall be a minimum of twenty-four (24) inches deep, but depending on size, location, and species of tree to be planted, a larger barrier may be required. The root barrier shall be installed with twenty (20) linear feet, centered from the trunk, for large trees and fifteen (15) linear feet for smaller trees. All root barriers shall be linear.
- Vertical Clearance Over a Roadway. Trees that encroach into roadways shall be maintained in accordance with the St. Lucie County Fire District Fire Prevention Code.

See Sheet L-002 for additional notes.

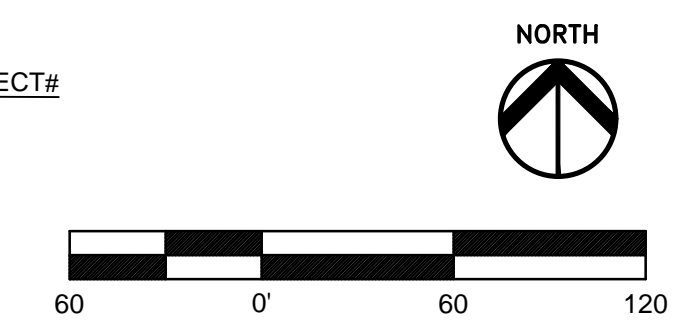


STREET TREE PLANT LIST

TREES	QTY	BOTANICAL NAME	COMMON NAME	REMARKS
BS	2	Bursera simaruba	Gumbo Limbo	MIN. 65 GAL., 14" H.P.V. 2-3/4" CAL.
QV	275	Quercus virginiana	Southern Live Oak	min. 65 gal., 14" ht., 2.5" cal., matched
GROUND CVR	QTY	BOTANICAL NAME	COMMON NAME	REMARKS
ARG	236	Arachis glabrata	Perennial Peanut	MIN. 1 GAL., 18" O.C.



CITY OF PORT ST. LUCIE PROJECT# P-21-271

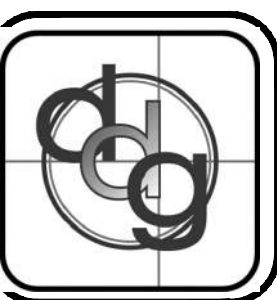


Legend:
 Limits of Phase 1 Plat 2

SHEET L-209
 SHEET L-210

- 7 2.10.22 REV. PER P&Z COMMENTS
- 6 1.11.22 REV. ADD FPL BOX/MOVE FENCE, ART LA.
- 5 12.23.21 REV. STREET TREES PER COMMENTS
- 4 03.23.21 REV. STREET TREES PER COMMENTS
- 3 03.23.21 REV. WATER METERS PER COMMENTS
- 2A 03.16.21 REV. STREET TREES PER COMMENTS
- 2 03.01.21 REV. STREET TREES PER CITY COMMENTS
- 1 01.29.20 REV. PER CITY COMMENTS

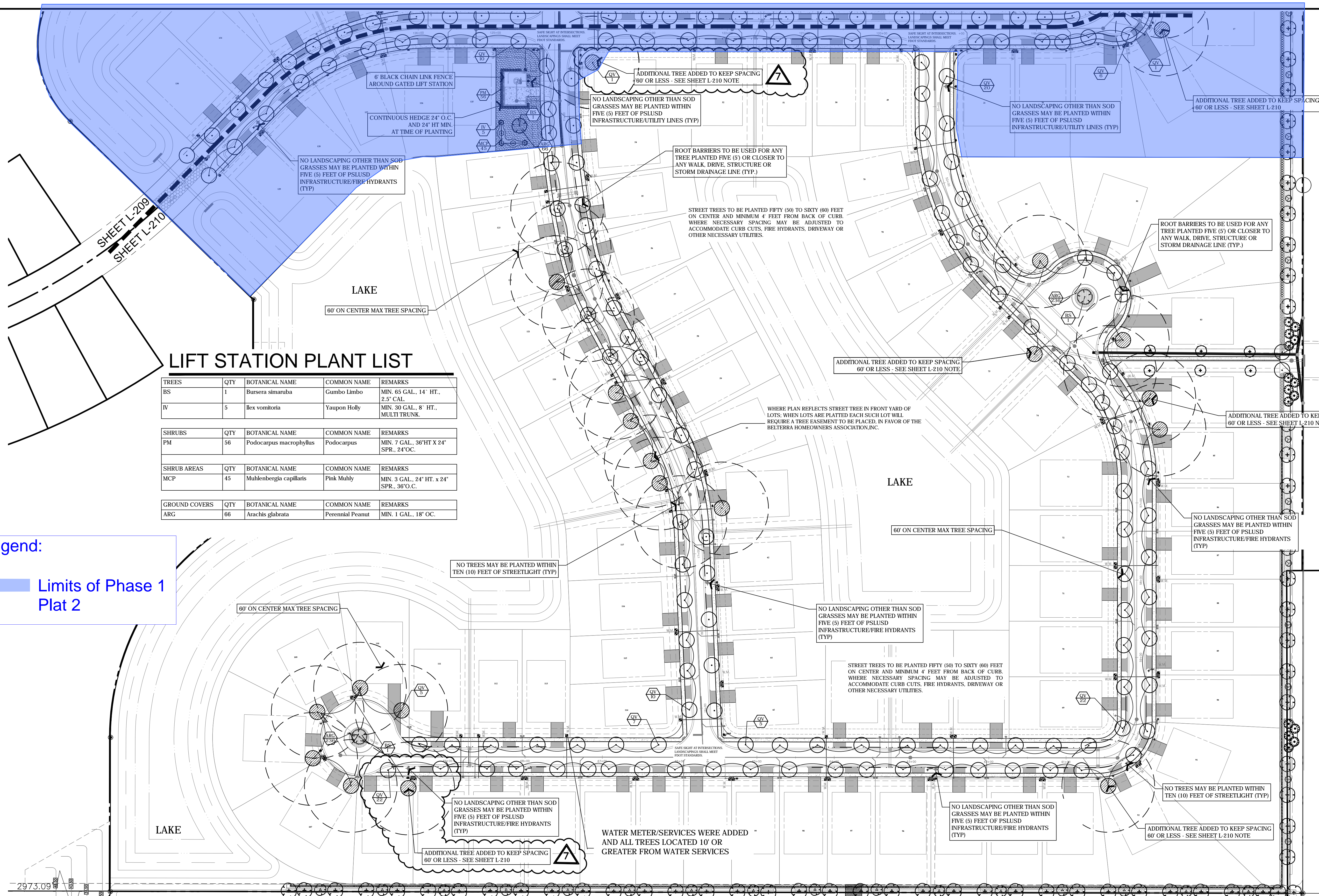
STREET TREES
 LANDSCAPE CONSTRUCTION PLAN
 Belterra Tradition
 Port St. Lucie, Florida



PROJECT NO. 1906
 SCALE
 DATE NOV 2019
 SHEET L-209

daly design group inc.
 Urban Planning, Landscape Architecture, Project Management, Development Consulting
 913 N Pennsylvania Ave, Winter Park, FL 32789 (407) 740-7373 www.dalydesign.com

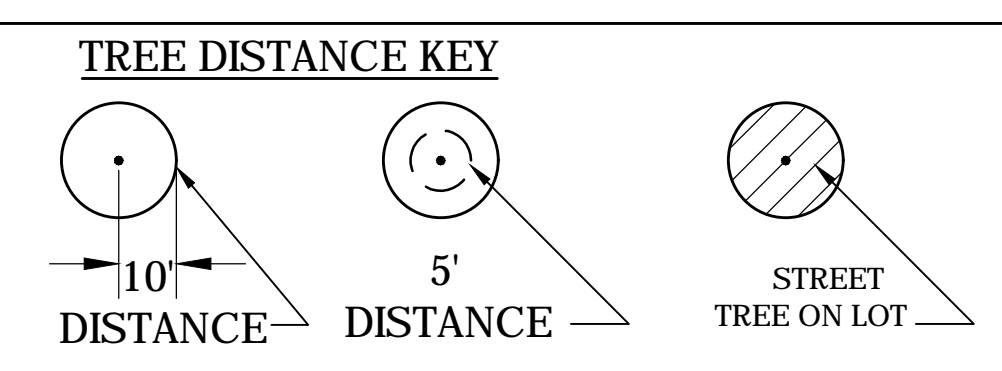
REV.	DATE	DESCRIPTION	BY



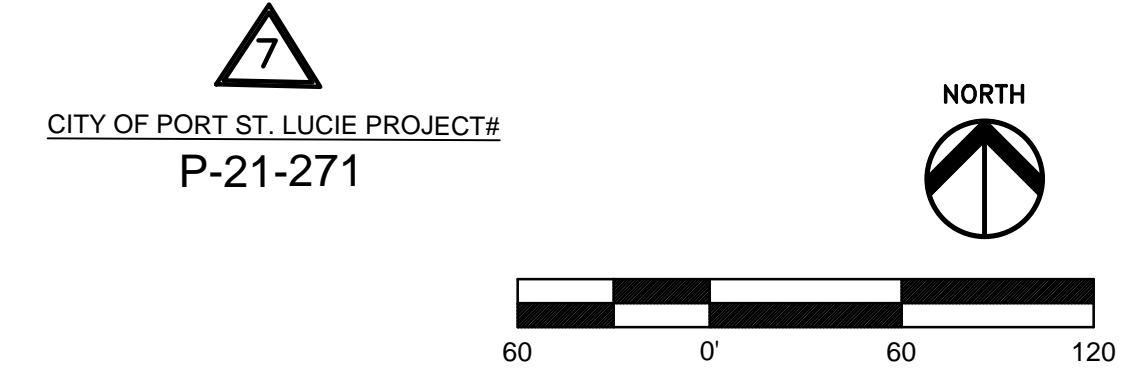
LIFT STATION PLANT LIST

TREES	QTY	BOTANICAL NAME	COMMON NAME	REMARKS
BS	1	Bursera simaruba	Gumbo Limbo	MIN. 65 GAL., 14' HT., 2.5' CAL.
IV	5	Ilex vomitoria	Yaupon Holly	MIN. 30 GAL., 8' HT., MULTI TRUNK.
SHRUBS	QTY	BOTANICAL NAME	COMMON NAME	REMARKS
PM	56	Podocarpus macrophyllus	Podocarpus	MIN. 7 GAL., 36" HT X 24" SPR., 24" OC.
SHRUB AREAS	QTY	BOTANICAL NAME	COMMON NAME	REMARKS
MCP	45	Muhlenbergia capillaris	Pink Muhly	MIN. 3 GAL., 24" HT. x 24" SPR., 36" O.C.
GROUND COVERS	QTY	BOTANICAL NAME	COMMON NAME	REMARKS
ARG	66	Arachis glabrata	Perennial Peanut	MIN. 1 GAL., 18" OC.

Legend:
 Limits of Phase 1 Plat 2



NOTE:
 In the event that the required street tree spacing can not be met due to a utility or hardscape conflict, a street tree can be installed on a lot adjacent to the right of way line to satisfy the requirement. When lots are platted, each such lot will require a Tree Easement to be placed, in favor of the Belterra Homeowner's Association, Inc.



STREET TREE PLAN

REV.	DATE	DESCRIPTION	BY
7	2.10.22	REV. PER P&Z COMMENTS	
6	1.11.22	REV. ADD FPL BOX/MOVE FENCE, ART LA.	
5	12.23.21	REV. STREET TREES PER COMMENTS	
4	03.23.21	REV. STREET TREES PER COMMENTS	
3	10.23.21	REV. WATER METERS PER COMMENTS	
2A	03.16.21	REV. STREET TREES PER COMMENTS	
2	03.01.21	REV. STREET TREES PER CITY COMMENTS	
1	01.29.20	REV. PER CITY COMMENTS	

STREET TREES
LANDSCAPE CONSTRUCTION PLAN
Belterra Tradition
 Port St. Lucie, Florida



PROJECT NO. 1906
 SCALE
 DATE NOV 2019
 SHEET L-210

daly design group inc.
 Urban Planning, Landscape Architecture, Project Management, Development Consulting
 913 N Pennsylvania Ave., Winter Park, FL 32789 (407) 740-7373 www.dalydesign.com