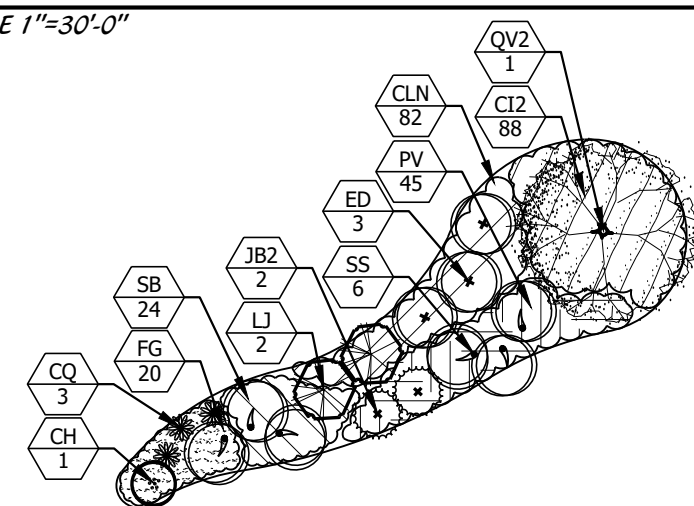


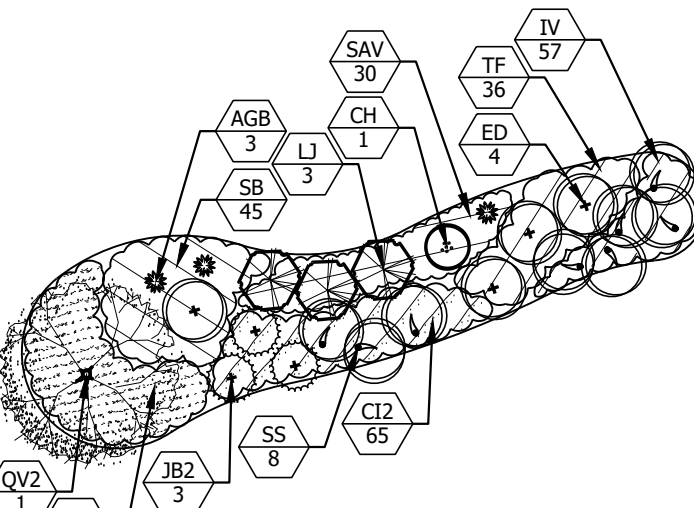
COMMON AREA 8

SCALE 1"=30'-0"



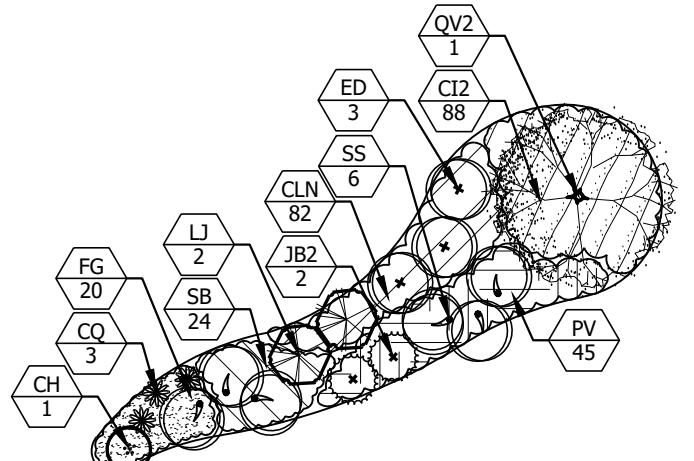
COMMON AREA 9

SCALE 1"=30'-0"



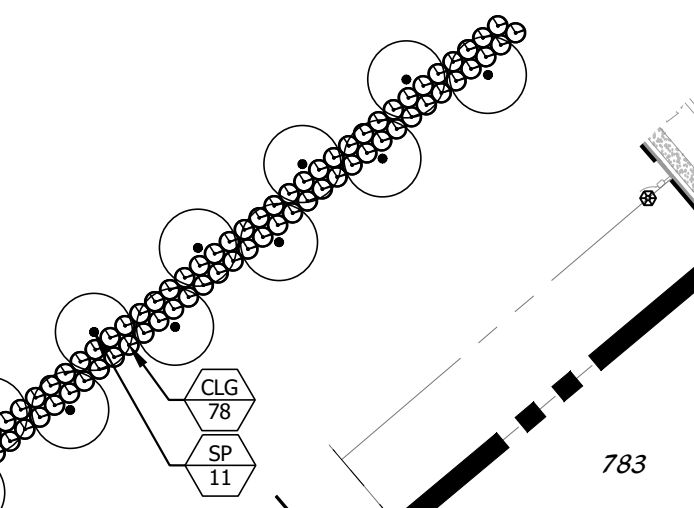
COMMON AREA 10

SCALE 1"=30'-0"



COMMON AREA 15

SCALE 1"=30'-0"

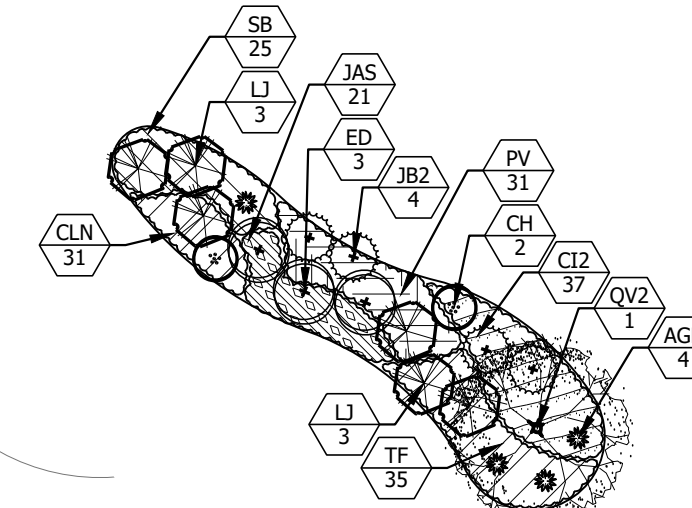


LANDSCAPE NOTES:

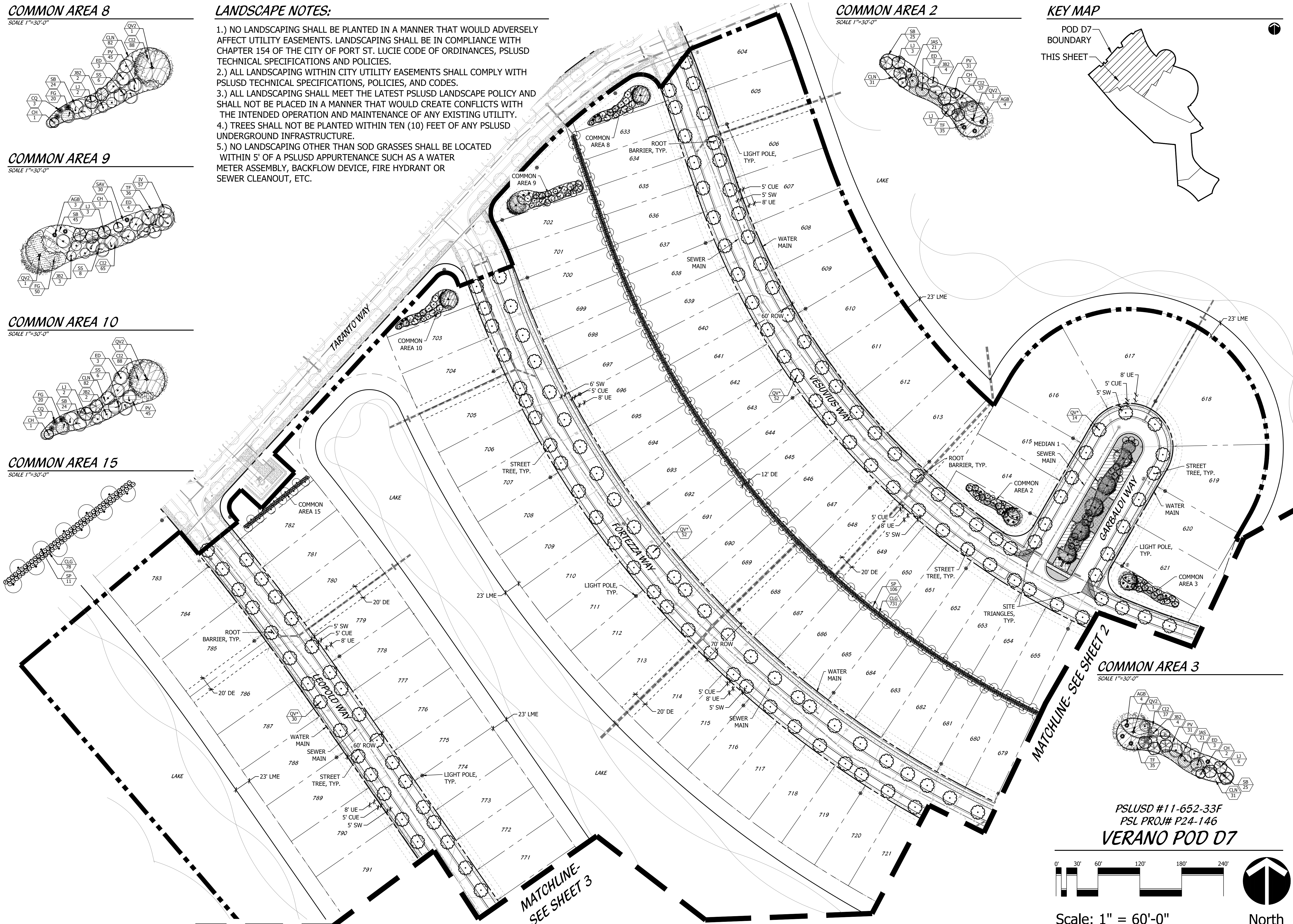
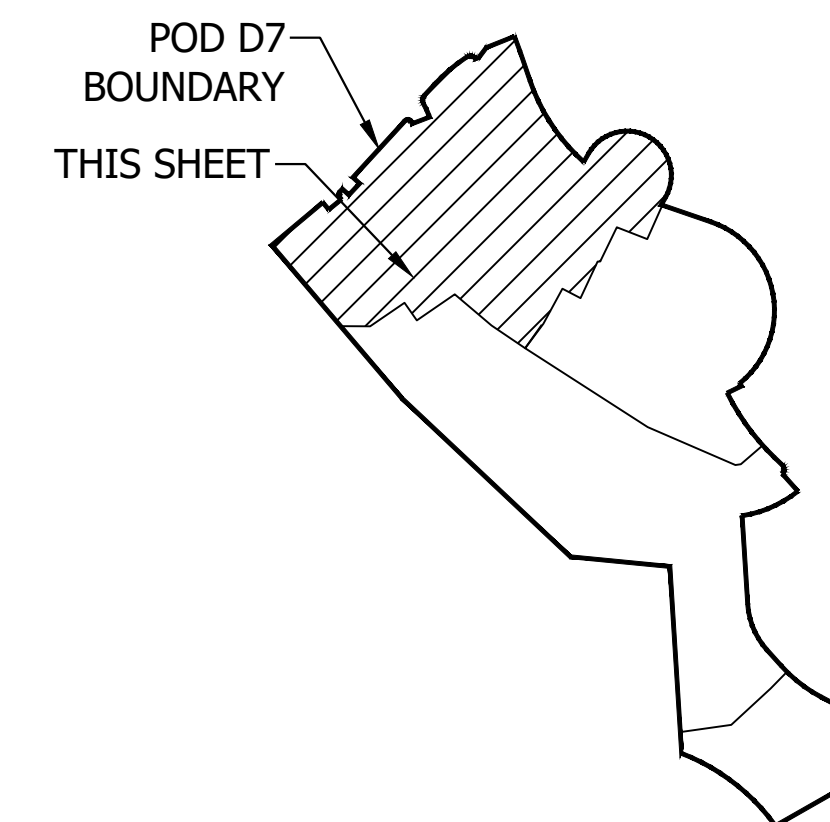
- 1.) NO LANDSCAPING SHALL BE PLANTED IN A MANNER THAT WOULD ADVERSELY AFFECT UTILITY EASEMENTS. LANDSCAPING SHALL BE IN COMPLIANCE WITH CHAPTER 154 OF THE CITY OF PORT ST. LUCIE CODE OF ORDINANCES, PSLUSD TECHNICAL SPECIFICATIONS AND POLICIES.
- 2.) ALL LANDSCAPING WITHIN CITY UTILITY EASEMENTS SHALL COMPLY WITH PSLUSD TECHNICAL SPECIFICATIONS, POLICIES, AND CODES.
- 3.) ALL LANDSCAPING SHALL MEET THE LATEST PSLUSD LANDSCAPE POLICY AND SHALL NOT BE PLACED IN A MANNER THAT WOULD CREATE CONFLICTS WITH THE INTENDED OPERATION AND MAINTENANCE OF ANY EXISTING UTILITY.
- 4.) TREES SHALL NOT BE PLANTED WITHIN TEN (10) FEET OF ANY PSLUSD UNDERGROUND INFRASTRUCTURE.
- 5.) NO LANDSCAPING OTHER THAN SOD GRASSES SHALL BE LOCATED WITHIN 5' OF A PSLUSD APPURTENANCE SUCH AS A WATER METER ASSEMBLY, BACKFLOW DEVICE, FIRE HYDRANT OR SEWER CLEANOUT, ETC.

COMMON AREA 2

SCALE 1"=30'-0"

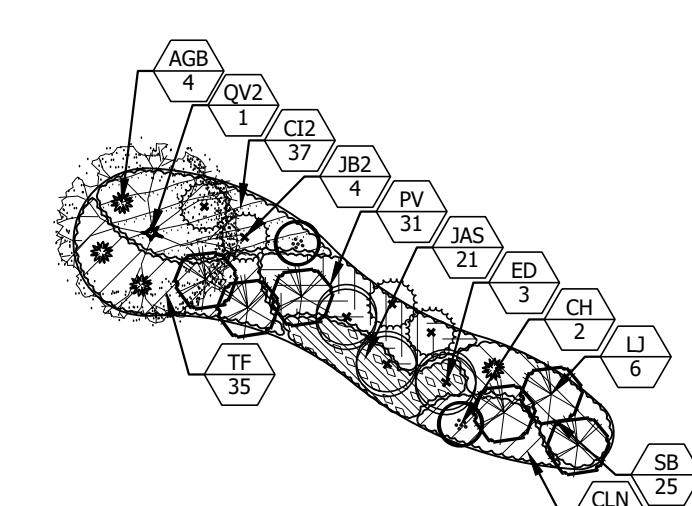


KEY MAP



COMMON AREA 3

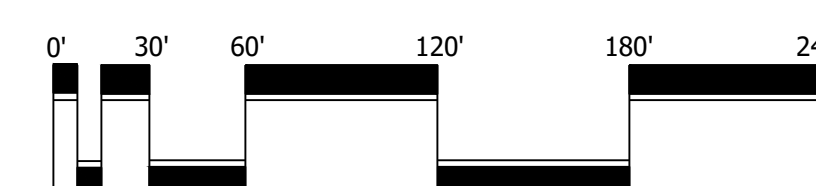
SCALE 1"=30'-0"



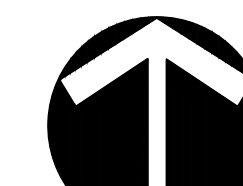
PSLUSD #11-652-33F

PSL PROJ# P24-146

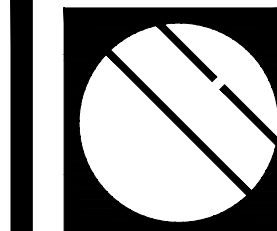
VERANO POD D7



Scale: 1" = 60'-0"



North



Cotleur & Hearing

Landscape Architects
Land Planners
Environmental Consultants

1934 Commerce Lane
Suite 1
Jupiter, Florida 33458
561.747.6336 - Fax 747.1377
www.cotleurhearing.com
Lic# LC-C000239

VERANO SOUTH POD D

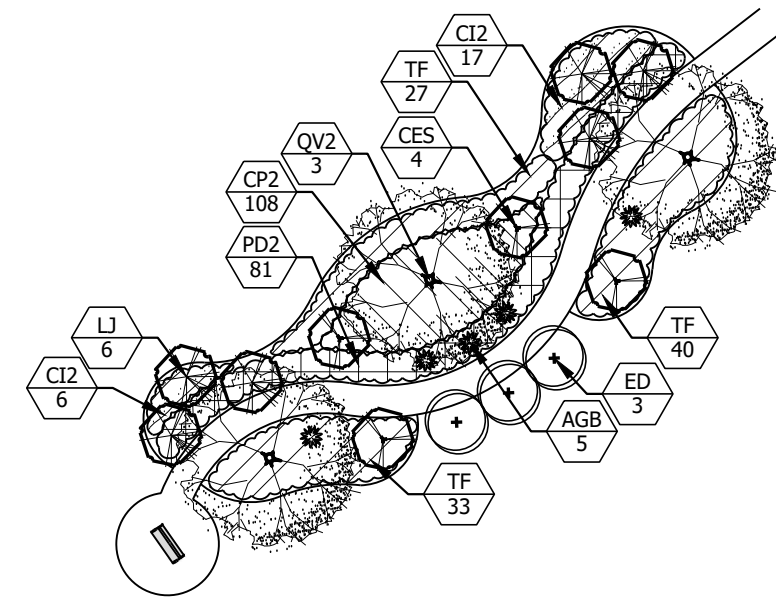
Kolter Homes
Port St. Lucie, Florida

DESIGNED	TJB
DRAWN	TJB
APPROVED	LAH
JOB NUMBER	18-0905
DATE	02-19-25
REVISIONS	03-28-25
	04-25-25

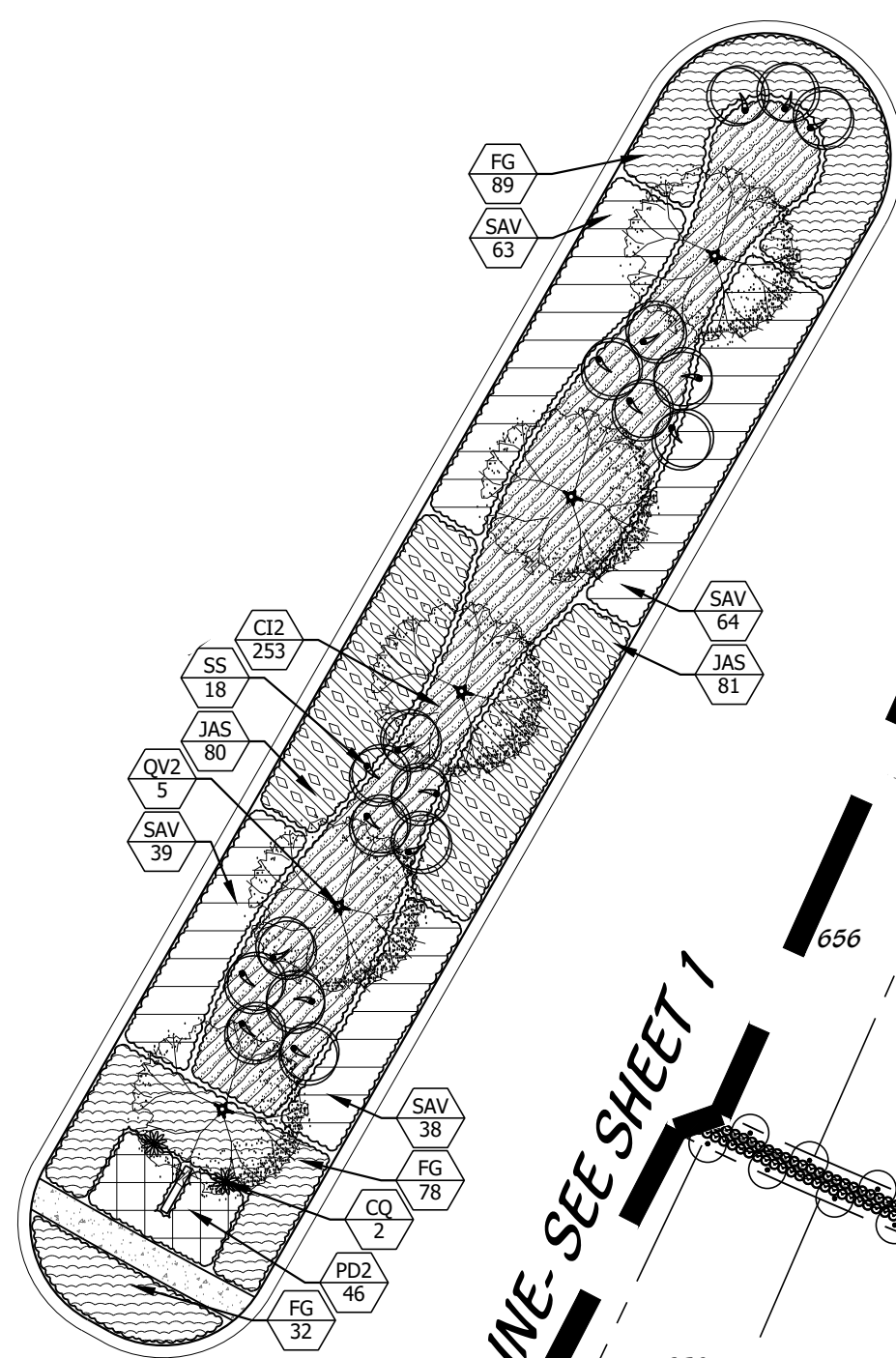
SHEET 1 OF 5

© COTLEUR & HEARING, INC.
These drawings are the property of the architect and are not to be used for extensions or other projects except by agreement in writing with the architect. Immediately report any discrepancies to the architect.

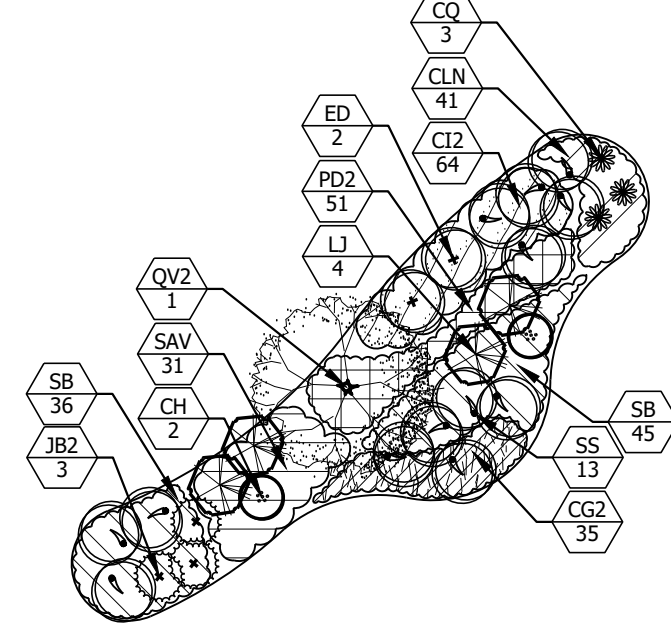
SCALE 1"=30'-0"



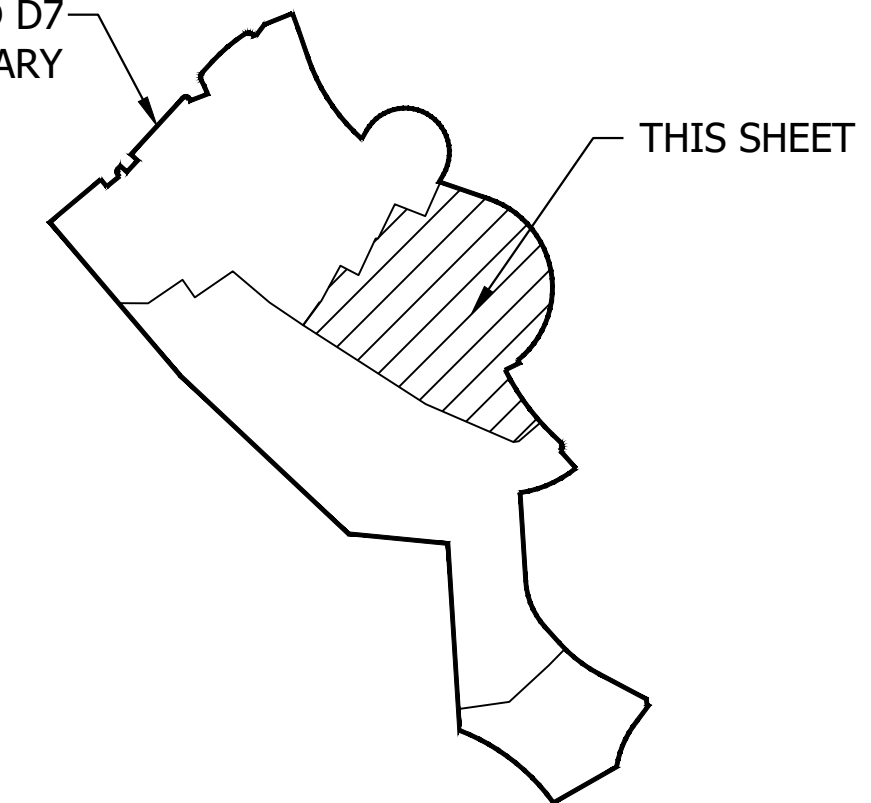
SCALE 1"=30'-0"



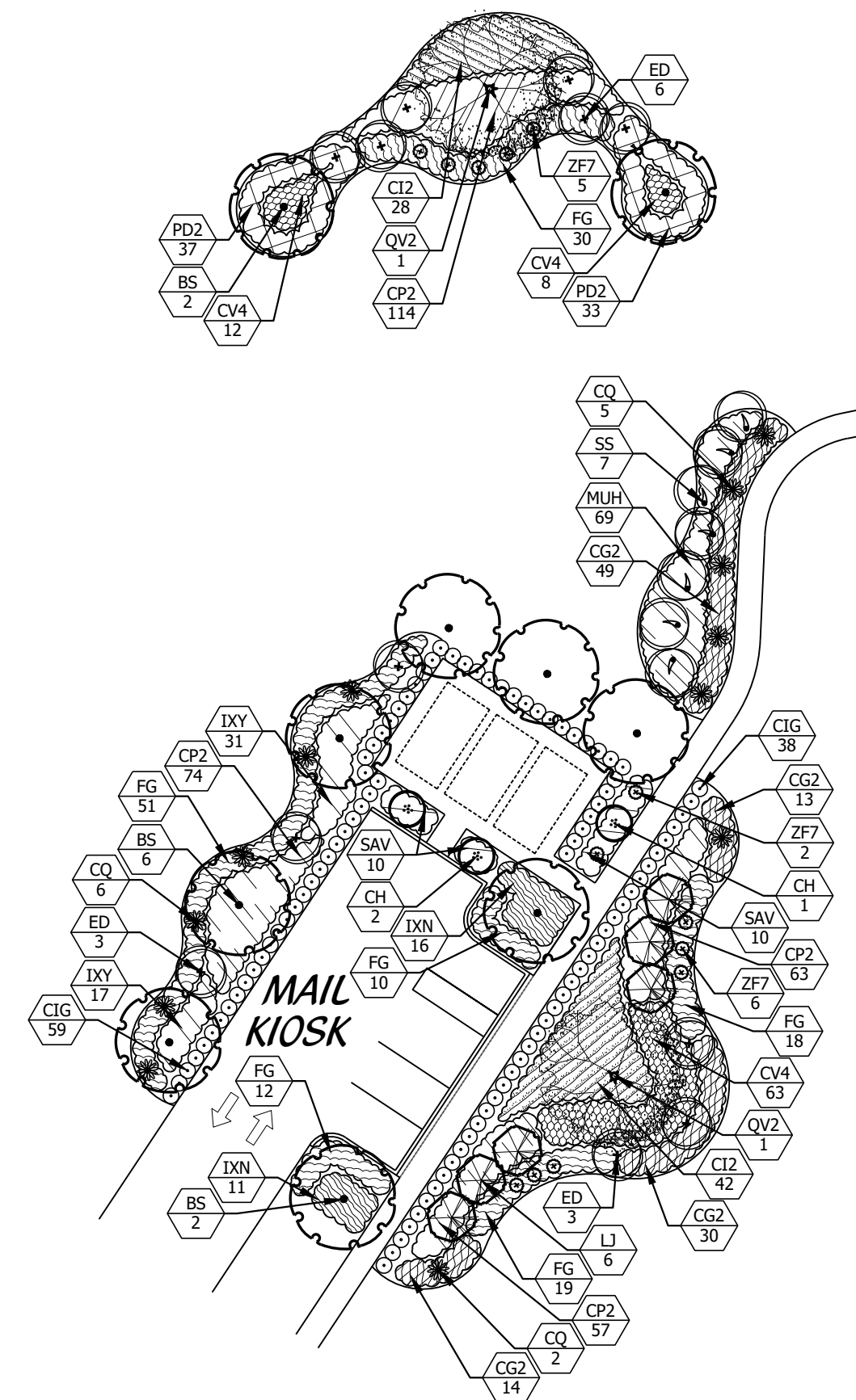
SCALE 1"=30'-0"



POD D7
BOUNDARY

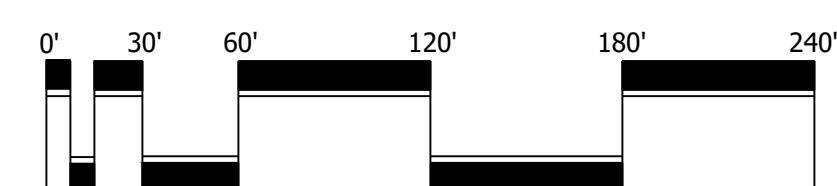


SCALE 1"=30'-0"



DESCRIPTION	REQUIRED	PROVIDED
PARKING LOT:	2	2
1 TREE PER TERMINAL ISLAND		
1 TREE PER 30 LF OF VUA PERIMETER (194 TOTAL LF/ 30 =7 TREES)	7	7
CONTINUOUS HEDGE AROUND PARKING (CONTINUOUS COCOPLUM HEDGE PROVIDED)	YES	YES
NATIVE:	25%	100%
25% OF ALL REQUIRED SHRUB MATERIAL FOR THE MAIL KIOSK SPACE SHALL BE NATIVE.		

VERANO POD D7



North

- 1.) NO LANDSCAPING SHALL BE PLANTED IN A MANNER THAT WOULD ADVERSELY AFFECT UTILITY EASEMENTS. LANDSCAPING SHALL BE IN COMPLIANCE WITH CHAPTER 154 OF THE CITY OF PORT ST. LUCIE CODE OF ORDINANCES, PSLUSD TECHNICAL SPECIFICATIONS AND POLICIES.
- 2.) ALL LANDSCAPING WITHIN CITY UTILITY EASEMENTS SHALL COMPLY WITH PSLUSD TECHNICAL SPECIFICATIONS, POLICIES, AND CODES.
- 3.) ALL LANDSCAPING SHALL MEET THE LATEST PSLUSD LANDSCAPE POLICY AND SHALL NOT BE PLACED IN A MANNER THAT WOULD CREATE CONFLICTS WITH THE INTENDED OPERATION AND MAINTENANCE OF ANY EXISTING UTILITY.
- 4.) TREES SHALL NOT BE PLANTED WITHIN TEN (10) FEET OF ANY PSLUSD UNDERGROUND INFRASTRUCTURE.
- 5.) NO LANDSCAPING OTHER THAN SOD GRASSES SHALL BE LOCATED WITHIN 5' OF A PSLUSD APPURTENANCE SUCH AS A WATER METER ASSEMBLY, BACKFLOW DEVICE, FIRE HYDRANT OR SEWER CLEANOUT, ETC.

Cotleur & Hearing

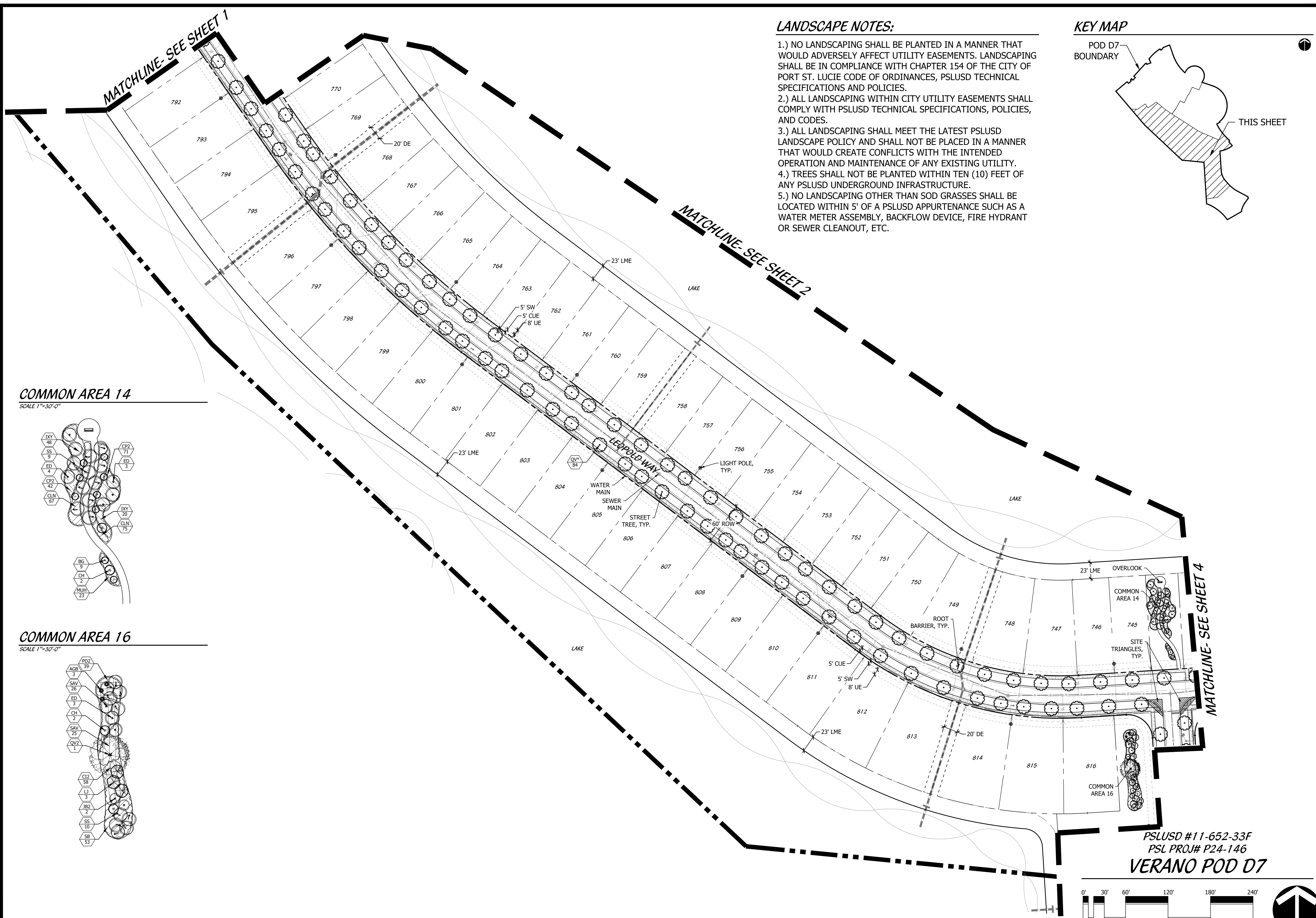
Landscape Architects
Land Planners
Environmental Consultants
1934 Commerce Lane
Suite 1
Jupiter, Florida 33458
561.747.6336 · Fax 747.1377
www.coteleurhearing.com
Lic# LC-C000239

VERANO SOUTH POD D
Kolter Homes
Port St. Lucie, Florida

DESIGNED _____ TJB
DRAWN _____ TJB
APPROVED _____ LAH
JOB NUMBER _____ 18-0905
DATE _____ 02-19-25
REVISIONS _____ 03-28-25
_____ 04-25-25

SHEET 2 OF 5

© COTLEUR & HEARING, INC.
These drawings are the property of the architect and are not to be used for extensions or on other projects except by agreement in writing with the architect. Immediately report any discrepancies to the architect.



LANDSCAPE NOTES:

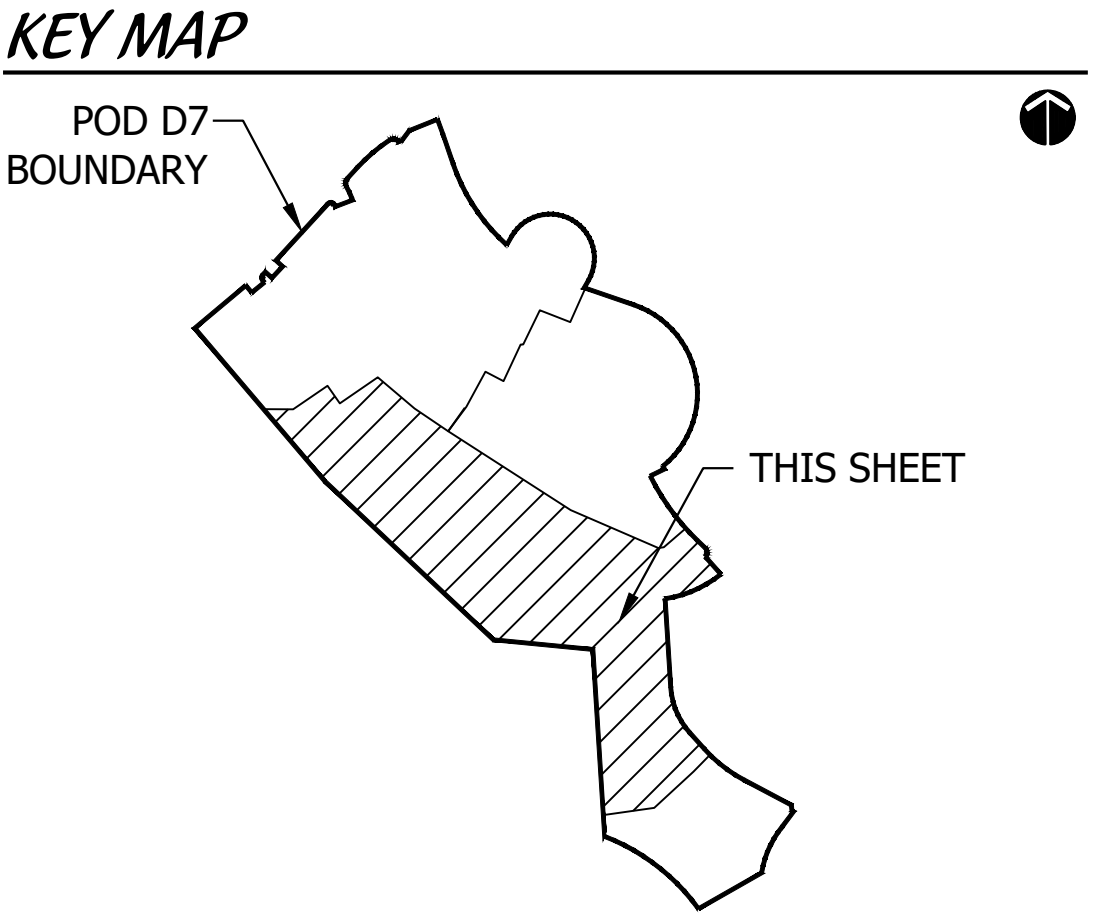
1.) NO LANDSCAPING SHALL BE PLANTED IN A MANNER THAT WOULD ADVERSELY AFFECT UTILITY EASEMENTS. LANDSCAPING SHALL BE IN COMPLIANCE WITH CHAPTER 154 OF THE CITY OF PORT ST. LUCIE CODE OF ORDINANCES, PSLUSD TECHNICAL SPECIFICATIONS AND POLICIES.

2.) ALL LANDSCAPING WITHIN CITY UTILITY EASEMENTS SHALL COMPLY WITH PSLUSD TECHNICAL SPECIFICATIONS, POLICIES, AND CODES.

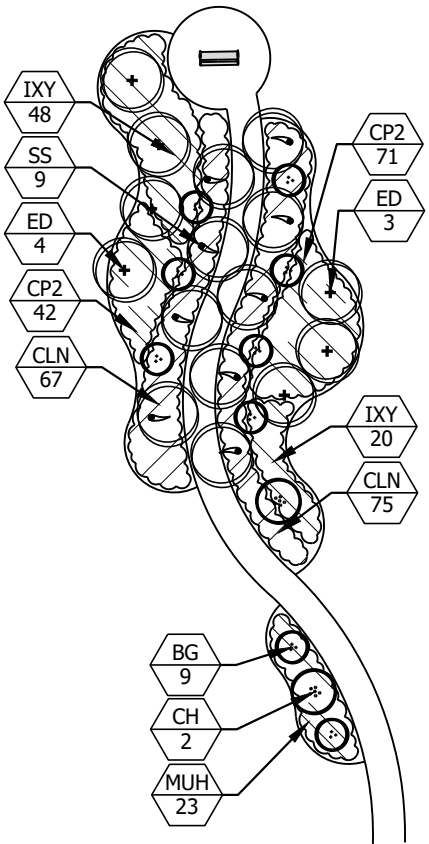
3.) ALL LANDSCAPING SHALL MEET THE LATEST PSLUSD LANDSCAPE POLICY AND SHALL NOT BE PLACED IN A MANNER THAT WOULD CREATE CONFLICTS WITH THE INTENDED OPERATION AND MAINTENANCE OF ANY EXISTING UTILITY.

4.) TREES SHALL NOT BE PLANTED WITHIN TEN (10) FEET OF ANY PSLUSD UNDERGROUND INFRASTRUCTURE.

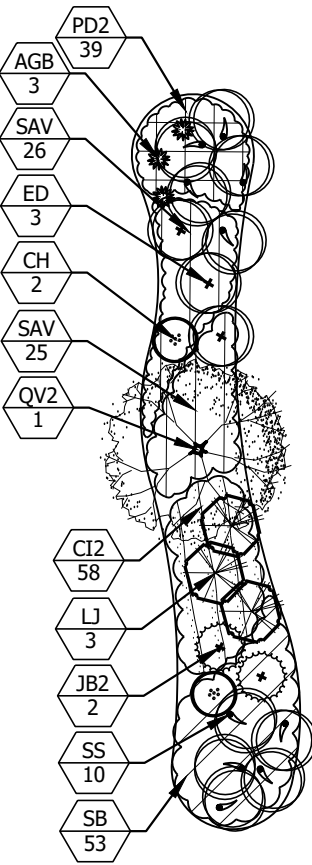
5.) NO LANDSCAPING OTHER THAN SOD GRASSES SHALL BE LOCATED WITHIN 5' OF A PSLUSD APPURTENANCE SUCH AS A WATER METER ASSEMBLY, BACKFLOW DEVICE, FIRE HYDRANT OR SEWER CLEANOUT, ETC.



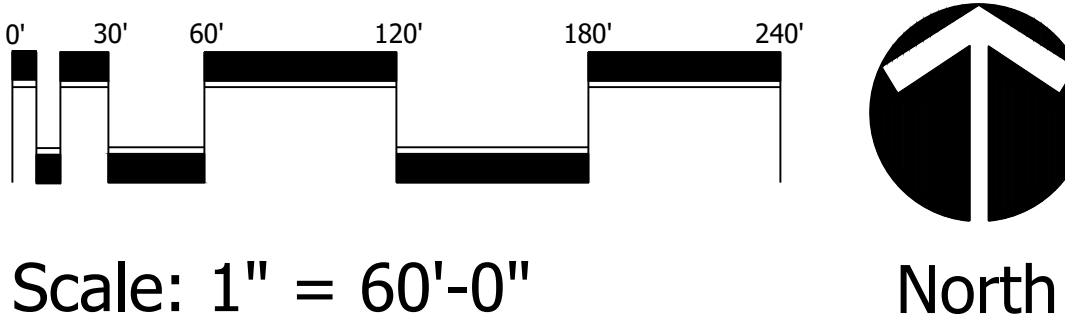
COMMON AREA 14
SCALE 1"=30'-0"



COMMON AREA 16
SCALE 1"=30'-0"



PSLUSD #11-652-33F
PSL PROJ# P24-146
VERANO POD D7




Cotleur & Hearing
Landscape Architects
Land Planners
Environmental Consultants
1934 Commerce Lane
Suite 1
Jupiter, Florida 33458
561.747.6336 • Fax 747.1377
www.cotleurhearing.com
Lic# LC-C000239

VERANO SOUTH POD D
Kolter Homes
Port St. Lucie, Florida

DESIGNED	TJB
DRAWN	TJB
APPROVED	LAH
JOB NUMBER	18-0905
DATE	02-19-25
REVISIONS	03-28-25
	04-25-25

