

Landscape Data

Perimeter Landscaping Adjacent to Another Property- North Buffer (480')

Trees
Required - (1 Tree/30 L.F.) - 480 L.F./30 = 16 Trees
Provided - 16 Trees

Shrubs
Required - Continuous Hedge 2' O.C. = 240 Shrubs
Provided - 240 Shrubs

Perimeter Landscaping Adjacent to Another Property- West Buffer (268')

Trees
Required - (1 Tree/30 L.F.) - 268 L.F./30 = 9 Trees
Provided - 9 Trees

Shrubs
Required - Continuous Hedge 2' O.C. = 134 Shrubs
Provided - 134 Shrubs

Perimeter Landscaping Adjacent to Road Right-of-way- South Buffer (467')

Trees
Required - (1 Tree/30 L.F.) - 467 L.F./30 = 16 Trees
Provided - 16 Trees

Shrubs
Required - Continuous Hedge 2' O.C. = 234 Shrubs
Provided - 234 Shrubs

Perimeter Landscaping Adjacent to Another Property - East Buffer (262')

Trees
Required: (1 Tree/30 L.F.) - 262 L.F./30 = 9 Trees
Provided: 9 Trees

Shrubs
Required: Continuous Hedge 2' O.C. = 131 Shrubs
Provided: 131 Shrubs

Parking Area Interior Landscaping

Required Terminal/Interior Island Trees - 1 Tree per Terminal/Interior Island = 13 Trees
* Total Terminal/Interior Island Trees Provided = 13 Trees

Palm Requirements

Required: No more than 25% of required trees may be palms
Total Trees & Palms = 72
Total Palms = 0 @ 2.1 = 0 Trees
Provided: Palms = 0 @ 0%

Total Trees:
Total Trees Required: 72
Total Trees Provided: 72
72 Trees + 0 Palms @ 2.1 = 0 Trees = 72 Trees

Native Plants

Trees
Required: 50% of all required trees shall be native
Total Trees = 72 (36 = 50%)
Provided: Native Trees = 36 / 72 = 50%

Shrubs
Required: 25% of all required shrubs shall be native
Total Shrubs = 968 (242 Minimum)
Provided: Native Shrubs = 242 / 968 = 25%

Flowering Trees
Required: 20% of all required trees shall be flowering
Total Trees = 72 (Not Including Palms) x 20% = 15
Provided: Flowering Trees = 15 = 20%

Landscape Island Evergreen Shade Trees
Required: 75% of all required trees located within landscape islands shall be evergreen shade trees
Total Landscape Islands = 13 x 75% = 10 Trees
Provided: Landscape Islands with Evergreen Shade Trees = 10 = 75%

Tree Species Mix
Required: When 41+ trees are required the minimum species mix = 5
Provided: 5

Building Facades

Trees
Required - 1 Tree / 30 L.F. of Building Perimeter
646 L.F. of Building Perimeter / 30 L.F. = 22 Trees
Provided - 22

Shrubs
Require - 1 Shrub / 1.5 L.F. of Building Perimeter
Excluding Paved Access Areas = 304 L.F. / 1.5 = 203 Shrubs
Provided - 203 Shrubs

Dumpster

Required Hedge / Vine 2' O.C. 46 L.F. / 2 = 23 Shrubs
Provided - 23 Shrubs

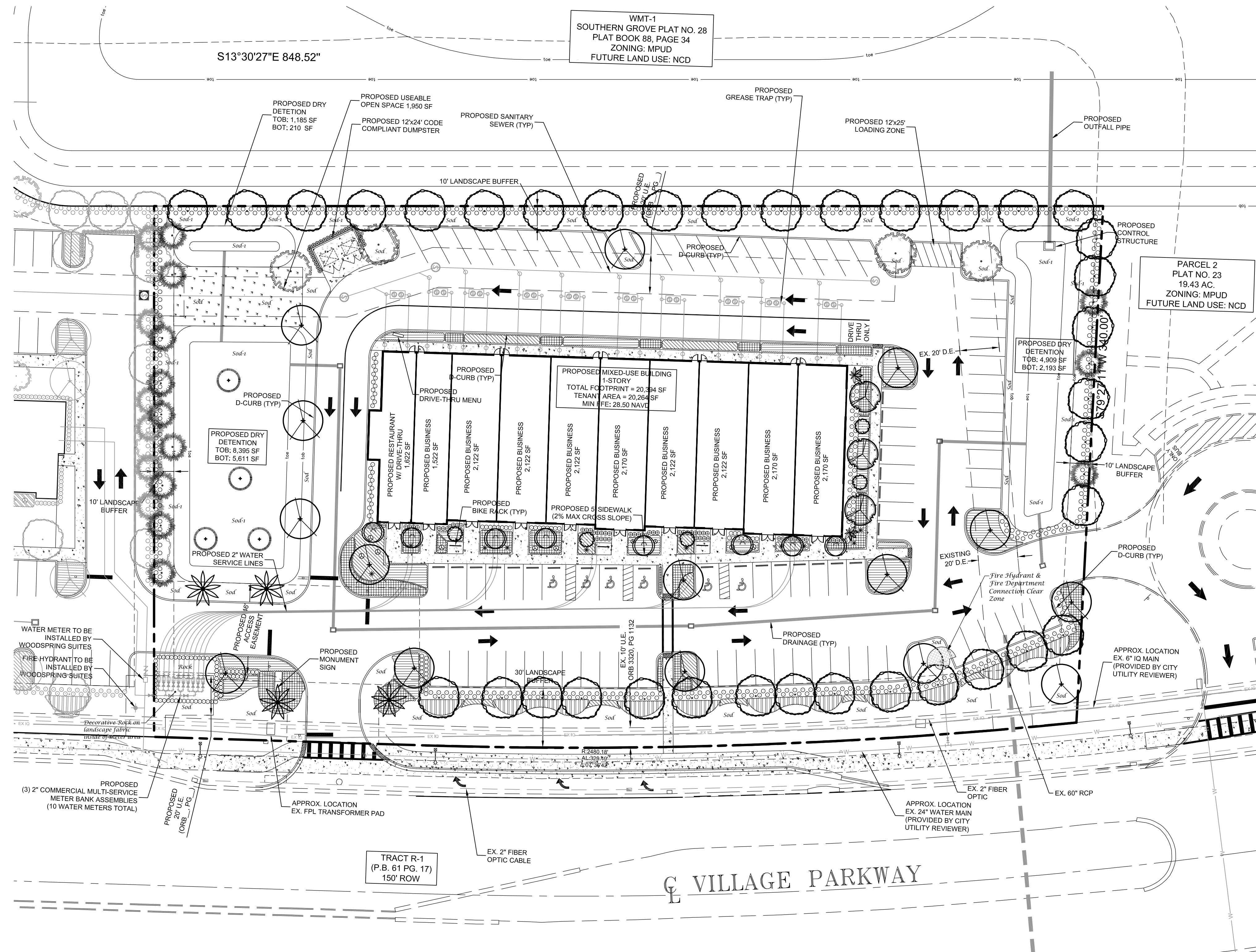
Note:

* Some trees relocated to detention areas for water quality enhancement due to site constraints such as utilities, etc.

Plant List

SYM	SPECIES	COMMON NAME/DESCRIPTION	SIZE	SPACING	REMARKS	DROUGHT TOLERANCE
HS	HIBISCUS STANDARD	SEMINOLE PINK HIBISCUS TREE	#3, 6' x 4'	A.S.	FULL, SPECIMEN	HIGH
IE*	ILEX x ATTENUATA 'EAGLESTON'	EAGLESTON HOLLY	14' x 6', 2.5' CAL.	A.S.	FULL CANOPY, 4' C.T. MIN.	HIGH
MG*	MAGNOLIA GRANDIFLORA	SOUTHERN MAGNOLIA D.O. BLANCHARD	14' x 6', 2.5' CAL.	A.S.	FULL CANOPY, 4' C.T. MIN.	HIGH
LS	LAGERSTROEMIA SPECIOSA	QUEENS CREPE MYRTLE	14' x 6', 2.5' CAL.	A.S.	FULL CANOPY, 4' C.T. MIN.	HIGH
PE*	PINUS ELLIOTTI Densa	SOUTH FLORIDA SLASH PINE	14' x 6', 2.5' CAL.	A.S.	FULL CANOPY, 4' C.T. MIN.	HIGH
QL*	QUERCUS LAURIFOLIA	LAUREL OAK	14' x 6', 2.5' CAL.	A.S.	FULL CANOPY, 4' C.T. MIN.	HIGH
QI*	QUERCUS VIRGINIANA	LIVE OAK	14' x 6', 2.5' CAL.	A.S.	FULL CANOPY, 4' C.T. MIN.	HIGH
TD*	TAXODIUM DISTICHUM	BALD CYPRESS	14' x 6', 2.5' CAL.	A.S.	FULL CANOPY, 4' C.T. MIN.	HIGH
PALMS						
RE*	ROYSTONIA ELATA	ROYAL PALM	10' C.T.	A.S.	FULL THICK TRUNK, SYMMETRICAL, MATCHED SPECIMENS	HIGH
PT	PTYCHOSPERMA ELEGANS	ALEXANDER PALM	10' C.T.	A.S.	FULL, DOUBLE THICK TRUNKS, SYMMETRICAL, MATCHED	HIGH
LARGE SHRUBS / ACCENTS						
COP	CORDYLONE TERMINALIS 'PURPLE PRINCE'	PURPLE PRINCE TI PLANT	#7, 3' x 2'	A.S.	FULL & THICK	MEDIUM
CRA	CRINUM ASIATICUM	QUEEN EMMA CRINUM LILY	#15, 3' x 2'	A.S.	FULL & THICK	MEDIUM
IKO	IKORA 'NORA GRANT'	PINK IKORA	#3, 2' x 2'	2' O.C.	FULL & THICK	MEDIUM
MFR*	MYRICANTHES FRAGRANS	SIMPSON STOPPER	#7, 3' x 2'	2' O.C.	FULL & THICK, STAGGER HEDGE	HIGH
MFR-1*	MYRICANTHES FRAGRANS	SIMPSON STOPPER	#15, 4' x 2'	2' O.C.	FULL & THICK	HIGH
VIS	VIBURNUM SUSPENSUM	SANDANKWA VIBURNUM	#7, 3' x 2'	2' O.C.	FULL & THICK	MEDIUM
STN	STRELTIZIA NICOLAI	WHITE BIRD OF PARADISE	12' X 8'	A.S.	FULL & THICK	HIGH
STR	STRELTIZIA REGINAE	ORANGE BIRD OF PARADISE	#15, 3' x 2'	A.S.	FULL & THICK	HIGH
MED. SHRUBS / GROUNDCOVERS / VINES						
BOD	BOUGAINVILLEA 'DWARF HELEN JOHNSON'	DWARF HELEN JOHNSON BOUG.	#3, 12' x 12'	24" O.C.	FULL & THICK	HIGH
FGI	FIGUS MICROCARPA 'GREEN ISLAND'	FIGUS GREEN ISLAND	#3, 12' x 12'	24" O.C.	FULL & THICK	HIGH
ILV*	ILEX VOMITORIA	DWARF YALPON HOLLY	#3, 12' x 12'	24" O.C.	FULL & THICK	HIGH
SPB*	SPARTINA BAKERI	SAND CORDGRASS	#1, 12' x 12'	18" O.C.	FULL & THICK	HIGH
SOD-1	PASPALUM NOTATUM	BAHIA SOD	SEE SPECS		BOTTOM OF RETENTION AREA	HIGH
SOD	STENOTAPHRUM SECUNDATUS	ST. AUGUSTINE SOD	SEE SPECS			LOW

* = Florida Native



Port St. Lucie Utility Systems Department Notes

- No landscaping shall be planted in a manner that would adversely affect utility easements. Landscaping shall be in compliance with Chapter 154 of the City of Port St. Lucie Code of Ordinances, PSLUSD technical specifications and policies.
- All required landscape improvements must be inspected and approved by the City of Port St. Lucie prior to the issuance of a Certificate of Occupancy.
- All landscaping within City utility easements shall comply with PSLUSD technical specifications, policies, and codes.
- All landscaping shall meet the latest PSLUSD Landscape Policy and shall not be placed in a manner that would create conflicts with the intended operation and maintenance of any existing utility.
- Trees shall not be planted within ten (10) feet of any PSLUSD underground infrastructure.
- No landscaping other than sod grasses shall be located within 5' of a PSLUSD appurtenance such as a water meter assembly, backflow device, fire hydrant or sewer cleanout, etc.

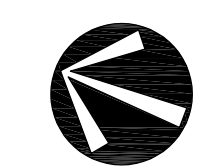
Port St. Lucie Engineering Department Notes

- The landscape plans meet the City's sight distance and clear zone requirements from Section 158.204 of the Code for 10' requirements.

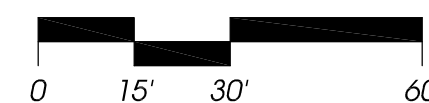
General Notes

- No plant substitutions can be made without the City of Port St. Lucie's approval.
- All required landscape improvements must be inspected and approved by the City of Port St. Lucie prior to the issuance of a Certificate of Occupancy.
- Any existing landscaping, sod, or irrigation damaged or destroyed during the construction shall be replaced prior to the final inspection.
- All prohibited, exotic and invasive species shall be removed from the entire site prior to issuance of certificate of occupancy.
- Planting adjacent to fire hydrants is to have a minimum clear radius of 7.5' as required by the NFPA Uniform Fire Code Florida Edition 18.3.4.1. Hydrants: All fire hydrants and fire check valves shall have a minimum of 7.5' from the front and sides with 4' from the rear to all landscape material per the Florida Fire Prevention Code.

PSLUSD #5288



North
Scale: 1" = 30'



Conceptual Landscape Plan

Conceptual
Design
Group, Inc.

Landscape Architecture - Site Planning

900 East Ocean Boulevard, Suite 130d
Stuart, Florida 34994
(772) 344-2340
LA: 0001635

Village Parkway Plaza

Tradition
City of Port St. Lucie, Florida

Jeffrey W. Smith, RLA
Florida Registration Number:
LA 0001635

Job No. 23-0801
Drawn By JWS
Submittal Dates 8-14-2023
10-9-2023
11-1-2023
11-7-2023

Revision Dates
#1 TraditionComments 10-9-2023
#2 TraditionComments 11-1-2023
#3 PSLUSD Comments 11-7-2023

These drawings are the property of the landscape architect and are not to be used for other projects except by written permission from the landscape architect. Report any discrepancies immediately to the landscape architect.

PSLUSD Project Number:
Sheet CL-1 of 1
City Project Numbers: P23-144