

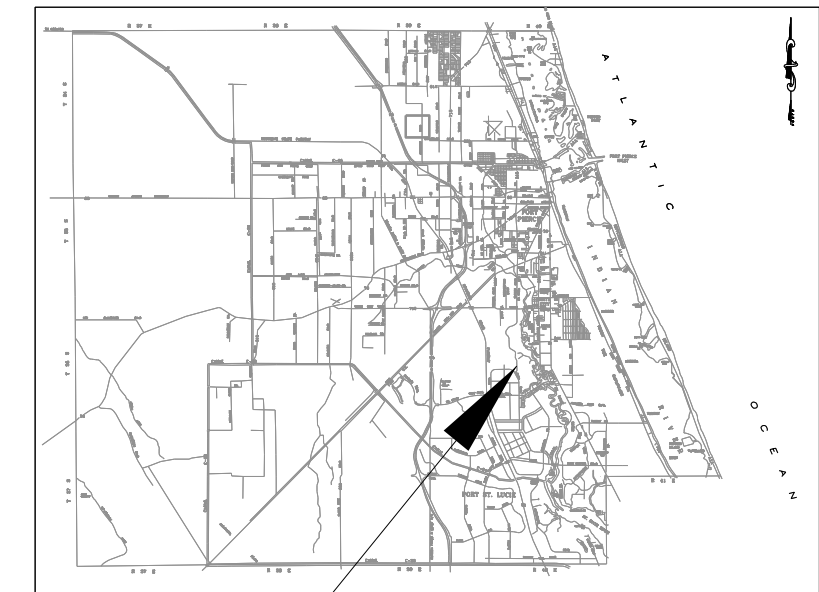
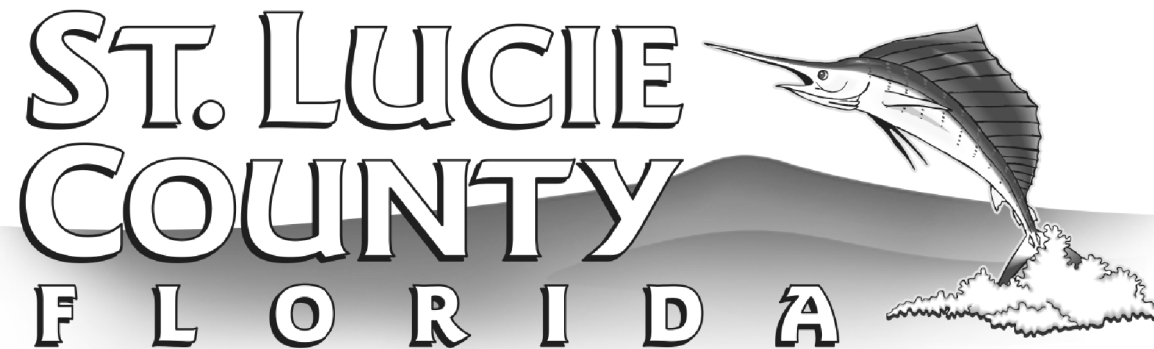
ST. LUCIE COUNTY

ST JAMES DRIVE PEDESTRIAN WALKWAY FROM NE ROYCE AVE. TO NE LAZY RIVER PKWY.

ST. LUCIE COUNTY PROJECT No. 715-19304

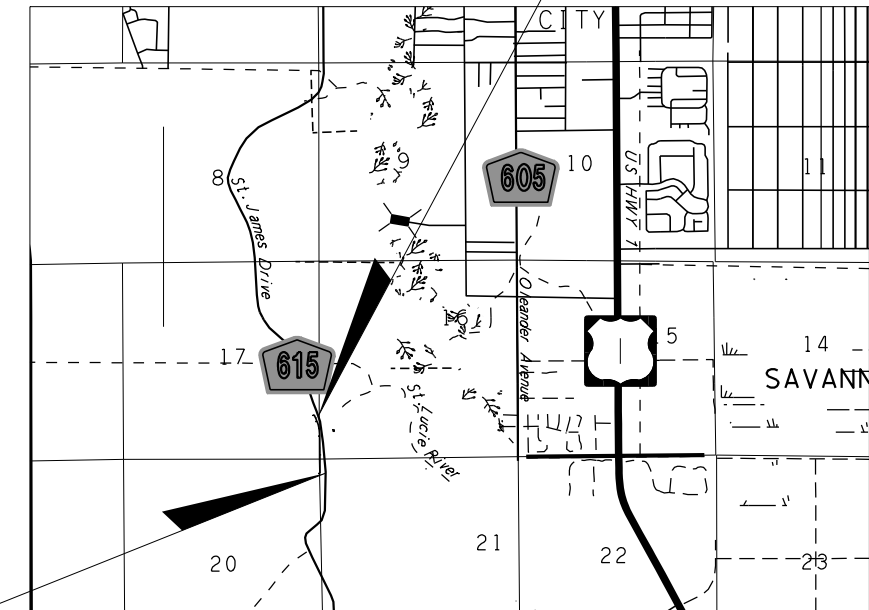
INDEX OF PLANS

SHEET No.	SHEET DESCRIPTION
1	COVER SHEET
2	GENERAL NOTES
3	SUMMARY OF PAY ITEMS
4	HORIZONTAL CONTROL PLAN
5-7	PLAN SHEETS
7A-7B	MISCELLANEOUS DETAILS
8-19	CROSS SECTIONS
20-21	EROSION CONTROL GENERAL NOTES
22-23	EROSION CONTROL



PROJECT LOCATION

END PROJECT
STA. 113+50.39



LOCATION MAP - N.T.S.

BEGIN PROJECT
STA. 100+60.56

BOARD OF COUNTY COMMISSIONERS

CHRIS DZADOVSKY	DISTRICT 1
SEAN MITCHELL	DISTRICT 2
LINDA BARTZ	DISTRICT 3
FRANNIE HUTCHINSON	DISTRICT 4
CATHY TOWNSEND	DISTRICT 5

COUNTY ADMINISTRATION

HOWARD TIPTON COUNTY ADMINISTRATOR

PUBLIC WORKS DEPARTMENT

DONALD B. WEST, P.E. DIRECTOR OF PUBLIC WORKS
KIMBERLY GRAHAM, P.E. COUNTY ENGINEER

90% PLAN
SUBMITTAL
JANUARY 2021

NORTHEAST QUARTER SECTION OF SECTION 17
TOWNSHIP 36 S, RANGE 40 E

ENGINEER OF RECORD BRIAN A. GOOD

P. E. NO. 56939

Kimley»Horn

445 24TH STREET, SUITE 200
VERO BEACH, FL 32960
(772) 794-4100
PROJECT NUMBER: 047203116
CERTIFICATE OF AUTHORIZATION: 00000696

NOTE: THE SCALE OF THESE PLANS MAY
HAVE CHANGED DUE TO REPRODUCTION


48 HOURS BEFORE DIGGING
CALL TOLL FREE
1-800-432-4770
CALL SUNSHINE
NOTIFICATION CENTER

- 1) GOVERNING SPECIFICATIONS: FLORIDA DEPARTMENT OF TRANSPORTATION, "STANDARD SPECIFICATIONS FOR ROAD AND BRIDGE CONSTRUCTION" DATED JANUARY 2020.
- 2) CONSTRUCTION DETAILS SHALL BE IN ACCORDANCE WITH FLORIDA DEPARTMENT OF TRANSPORTATION, STANDARD PLANS DATED FY 2020-21.
- 3) ANY GEODETIC MONUMENT WITHIN THE LIMITS OF CONSTRUCTION IS TO BE PROTECTED. IF IN DANGER OF DAMAGE, NOTIFY:

ROD REED, PLS
ST. LUCIE COUNTY SURVEYOR
(772) 462-1721
- 4) EXISTING SECTION CORNERS AND ¼ SECTION CORNERS, AND OTHER LAND MARKERS OR MONUMENTS LOCATED WITHIN PROPOSED CONSTRUCTION ARE TO BE REFERENCED BY THE CONTRACTOR PRIOR TO CONSTRUCTION AND RESET AFTER CONSTRUCTION USING A REGISTERED LAND SURVEYOR LICENSED IN THE STATE OF FLORIDA. THE SURVEYOR AND MAPPER SHALL FILE UPDATED CERTIFIED CORNER RECORDS WITH THE FLORIDA DEPARTMENT OF ENVIRONMENTAL PROTECTION, BUREAU OF SURVEYING AND MAPPING.
- 5) B.M. DATA IS NORTH AMERICAN VERTICAL DATUM OF 1988 (NAVD 88).
- 6) CONTRACTOR SHALL ADJUST ALL UTILITY LIDS AND COVERS TO FINISHED GRADE AS REQUIRED.
- 7) ALL EXISTING DRAINAGE STRUCTURES WITHIN THE LIMITS OF CONSTRUCTION SHALL REMAIN UNLESS OTHERWISE NOTED. ALL STRUCTURES IDENTIFIED TO BE REMOVED SHALL BE LEGALLY DISPOSED OF BY THE CONTRACTOR.
- 8) THE CONTRACTOR SHALL RESTORE ALL AREAS DISTURBED BY THIS CONSTRUCTION TO A CONDITION EQUAL TO, OR BETTER THAN THAT NOW EXISTS.
- 9) ITEMS IN CONFLICT WITH CONSTRUCTION SUCH AS EXISTING DRAINAGE STRUCTURES, AND EXCESS EXCAVATIONS ARE TO BE REMOVED BY CONTRACTOR AND DISPOSED OF IN A LEGAL AND PROPER MANNER AWAY FROM THE JOB SITE AT THE CONTRACTOR'S EXPENSE UNLESS THE ITEMS ARE TO BE REUSED ON THE PROJECT.
- 10) THE CONTRACTOR IS TO USE CAUTION WHEN WORKING IN OR AROUND AREAS OF OVERHEAD TRANSMISSION LINES, UNDERGROUND UTILITIES, OR NEAR CANAL BANKS.
- 11) EXISTING UTILITIES ARE TO REMAIN IN PLACE UNLESS OTHERWISE NOTED.
- 12) THE LOCATION OF EXISTING UTILITIES SHOWN ARE APPROXIMATE ONLY; THE EXACT LOCATION SHALL BE DETERMINED BY THE CONTRACTOR DURING CONSTRUCTION. RELOCATION OF UTILITIES SHALL BE COORDINATED WITH UTILITY COMPANIES AFTER IDENTIFICATION OF CONFLICT BY CONTRACTOR. CONTRACTOR SHALL NOTIFY ENGINEER IN ADVANCE BEFORE ANY RELOCATION.
- 13) PRIOR TO COMMENCEMENT OF ANY EXCAVATION, THE CONTRACTOR SHALL COMPLY WITH CHAPTER 556 OF FLORIDA STATUTES, UNDERGROUND FACILITY DAMAGE PREVENTION AND SAFETY.
- 14) THE CONTRACTOR IS RESPONSIBLE FOR THE PROTECTION OF ALL UTILITIES TO REMAIN IN PLACE.
- 15) THE CONTRACTOR SHALL CALL SUNSHINE (1-800-432-4770) FOR FIELD LOCATIONS TWO (2) BUSINESS DAYS BEFORE DIGGING NEAR UNDERGROUND UTILITIES. THE CONTRACTOR SHALL ALSO BE RESPONSIBLE TO CONTACT ANY UTILITY OWNER(S) THAT MAY NOT BE A "SUNSHINE" MEMBER.

- 16) THE MAINTENANCE OF TRAFFIC FOR THIS PROJECT SHALL BE IN ACCORDANCE WITH THE APPLICABLE FDOT INDEX NUMBERS (102-XXX SERIES) AND THESE DOCUMENTS; THE MANUAL ON UNIFORM TRAFFIC CONTROL DEVICES FOR STREETS AND HIGHWAYS (U.S. DEPARTMENT OF TRANSPORTATION, FHWA), SHALL BE FOLLOWED IN THE DESIGN, APPLICATION, INSTALLATION, MAINTENANCE AND REMOVAL OF ALL TRAFFIC CONTROL DEVICES, WARNING DEVICES AND BARRIERS NECESSARY TO PROTECT THE PUBLIC AND WORKMEN FROM HAZARDS WITHIN THE PROJECT LIMITS.
- 17) STAGING AND MATERIAL STORAGE SHALL NOT BE CONDUCTED ON ABUTTING PRIVATE PROPERTY WITHOUT WRITTEN APPROVAL FROM THE PROPERTY OWNER AND SHALL BE SUBMITTED TO ST. LUCIE COUNTY PROJECT MANAGER.
- 18) EROSION CONTROL MEASURES SHALL BE TAKEN BY CONTRACTOR DURING CONSTRUCTION AS PER FDOT EROSION AND SEDIMENT CONTROL MANUAL (LATEST EDITION):
 - A. SILT FENCE SHALL BE INSTALLED ALONG THE ENTIRE PERIMETER OF THE PROJECT ADJACENT TO ANY SOIL DISTURBING ACTIVITIES.
 - B. ALL DRAINAGE STRUCTURES ARE TO BE PROTECTED DURING CONSTRUCTION PER FDOT EROSION AND SEDIMENT CONTROL MANUAL (LATEST EDITION).
 - C. ALL DAMAGED WORK SHALL BE RESTORED AT NO COST TO THE COUNTY.
- 19) ALL THERMOPLASTIC PAVEMENT STRIPING IS MEASURED IN LINEAR FEET FROM CENTER OF STRIPE TO CENTER OF STRIPE.
- 20) ALL WORK, INCLUDING HARMONIZATION, SHALL BE COMPLETED FROM AND WITHIN EXISTING COUNTY RIGHT-OF-WAY.
- 21) THE CONTRACTOR SHALL COORDINATE SELECTION AND REVIEW OF ANY PROPOSED STAGING AREAS ASSOCIATED WITH THIS PROJECT WITH ST LUCIE COUNTY PROJECT MANAGER (GARY FRANKLIN, (772) 462-1192).
- 22) DETECTABLE WARNING SURFACES SHALL CONSIST OF CAST-IN-PLACE COMPOSITE TACTILE UNITS. DETECTABLE WARNING SURFACE COLOR SHALL BE "BRICK RED."
- 23) ALL EXISTING DRAINAGE STRUCTURES WITHIN THE LIMITS OF CONSTRUCTION SHALL REMAIN UNLESS OTHERWISE NOTED.

<u>UTILITY PROVIDER</u>	<u>CONTACT</u>	<u>TELEPHONE</u>
COMCAST CABLE	JOHN SCOTT STRAHN	(561) 227-3417
CITY GAS COMPANY OF FL	HOLLY COOMBS	(321) 638-3419
FLORIDA POWER & LIGHT	JOEL BRAY	(386) 586-6403
CROWN CASTLE FIBER	DANNY HASKETT	(786) 610-7073
PORT ST. LUCIE PUBLIC WORKS	PAUL JOHNSON	(772) 871-5289
PORT ST. LUCIE UTILITIES	LANEY SOUTHERLY	(772) 871-5063


REVISIONS						 BRIAN A. GOOD, P.E. P.E. LICENSE NUMBER 56939 445 24th STREET, SUITE 200 VERO BEACH, FL 32960 (772) 794-4100 CERTIFICATE OF AUTHORIZATION: 00000696	ST. LUCIE COUNTY BOARD OF COUNTY COMMISSIONERS ST. JAMES DRIVE PEDESTRIAN WALKWAY	GENERAL NOTES	SHEET NO.
DATE	BY	DESCRIPTION	DATE	BY	DESCRIPTION		2		

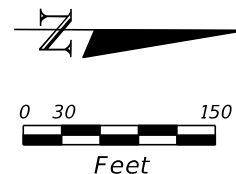
SUMMARY OF PAY ITEMS

PAY ITEM NO.	DESCRIPTION	UNIT	PROJECT QUANTITY
101-1A	MOBILIZATION/DEMOBILIZATION	LS	1
102-1A	MAINTENANCE OF TRAFFIC	LS	1
104-1A	PREVENTION, CONTROL & ABATEMENT OF EROSION CONTROL AND WATER POLLUTION	LS	1
110-1-1	CLEARING AND GRUBBING	LS	1
120-1	EXCAVATION	CY	147
120-6	EMBANKMENT	CY	97
199-1A	CONSTRUCTION LAYOUT/ RECORD DRAWINGS	LS	1
400-4-6A	CLASS IV CONCRETE (ARTICULATED BLOCK ANCHORS)	CY	29
425-6	VALVE BOX (ADJUST)	EA	1
515-2-311	PEDESTRIAN/BICYCLE RAILING (ALUMINUM) (42" TYPE I)	LF	160
520-1-10	TYPE 'F' CURB & GUTTER	LF	4
522-1	CONCRETE SIDEWALKS AND DRIVEWAYS, 4" THICK	SY	1040
522-2	CONCRETE SIDEWALKS AND DRIVEWAYS, 6" THICK	SY	45
527-2	DETECTABLE WARNINGS	SF	16
530-4-4A	ARTICULATING CONCRETE BLOCK REVETMENT SYSTEM (ARMORFLEX, 4.75")	SY	170
570-1-2A	PERFORMANCE TURF (SOD) (MATCH EXISTING)	SY	2000
700-1-51	SINGLE POST SIGN (RELOCATE)	EA	1
1000-1A	UTILITY COORDINATION	LS	1

SUMMARY OF PAY ITEMS

- 101-1A COST TO INCLUDE, BUT NOT LIMITED TO, MOWING EXISTING SOD AND MAINTENANCE OF EXISTING RIGHT OF WAY WITHIN THE PROJECT LIMITS INCLUSIVE OF MOWING AND LITTER REMOVAL FOR THE PROJECT DURATION.
- 102-1A MAINTENANCE OF TRAFFIC COSTS SHALL INCLUDE BUT NOT LIMITED TO CONSTRUCTION SIGNS, TEMPORARY BARRICADES, VARIABLE MESSAGE SIGNS, TEMPORARY PAVEMENT MARKINGS, INCIDENTAL TEMPORARY PAVEMENT, DUST CONTROL, ANY TEMPORARY DRAINAGE ELEMENTS BEYOND WHAT IS SPECIFIED IN THE CONTRACT DOCUMENTS, AND ALL ITEMS NECESSARY TO MEET THE MAINTENANCE OF TRAFFIC REQUIREMENTS OF THE FLORIDA DEPARTMENT OF TRANSPORTATION AS PRESCRIBED IN SECTION 102-XXX OF THE FDOT STANDARD PLANS.
- 120-6 ALL GRADING INCLUDING FINAL GRADING TO BE INCLUDED IN COST OF EMBANKMENT.
- 400-4-6A COST TO INCLUDE ALL MATERIAL, LABOR, FALSEWORK, STEEL AND INCIDENTALS AS IDENTIFIED BY MANUFACTURER AND CONSTRUCTION PLANS.
- 515-2-311 COST TO INCLUDE, BUT NOT LIMITED TO, MOUNTING HARDWARE.
- 570-1-2A COST OF PERFORMANCE TURF TO INCLUDE SOD, FERTILIZER, MOWING, WATERING, TOOLS, EQUIPMENT, PEGGING, LABOR AND ALL INCIDENTAL ITEMS NECESSARY.

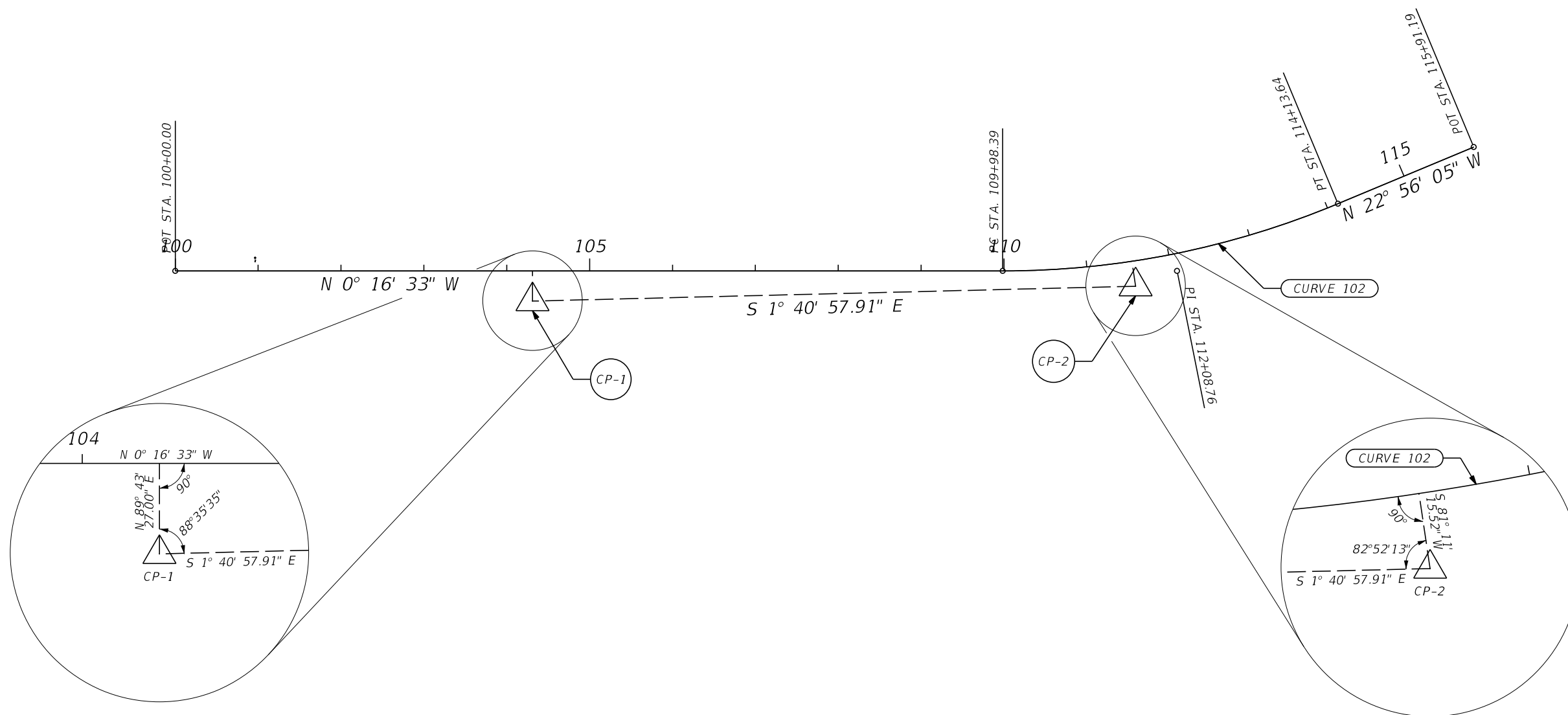
REVISIONS						 BRIAN A. GOOD, P.E. P.E. LICENSE NUMBER 56939 445 24th STREET, SUITE 200 VERO BEACH, FL 32960 (772) 794-4100 CERTIFICATE OF AUTHORIZATION: 00000696	ST. LUCIE COUNTY BOARD OF COUNTY COMMISSIONERS ST. JAMES DRIVE PEDESTRIAN WALKWAY	SUMMARY OF PAY ITEMS	SHEET NO.
DATE	BY	DESCRIPTION	DATE	BY	DESCRIPTION				3



CONTROL POINT (CP-1)
 STA 104+31.03, 36.41' RT
 FOUND:
 NORTHING: 1093309.5220
 EASTING: 867081.1560
 EL. = 13.5470

CONTROL POINT (CP-2)
 STA 111+54.83, 30.51' RT
 FOUND:
 NORTHING: 1092581.8690
 EASTING: 867102.5330
 EL. = 11.8530

CURVE DATA CURVE_102
 PI STA. = 112+08.76
 Δ = 22° 39' 32" (LT)
 D = 5° 27' 24"
 T = 210.37
 L = 415.25
 R = 1,050.00
 PC STA. = 109+98.39
 PT STA. = 114+13.64



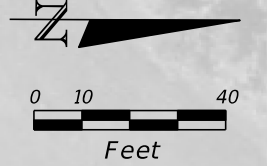
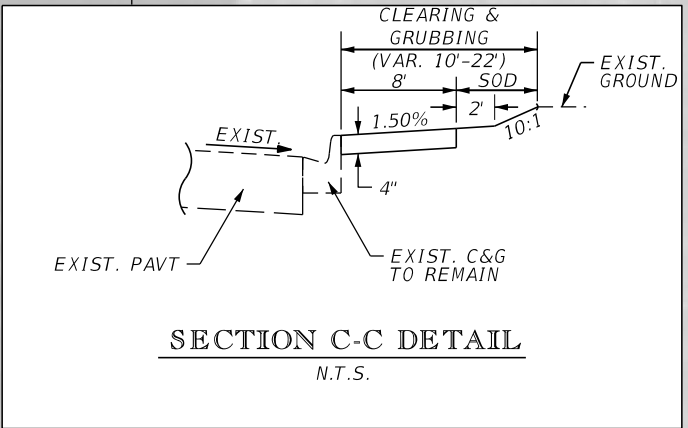
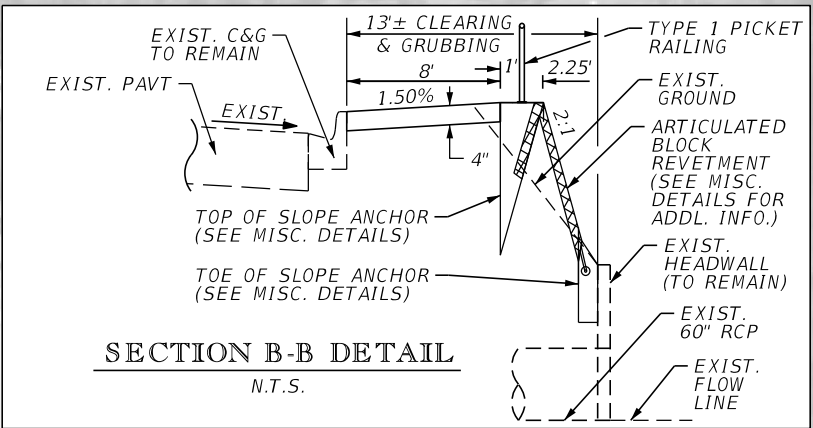
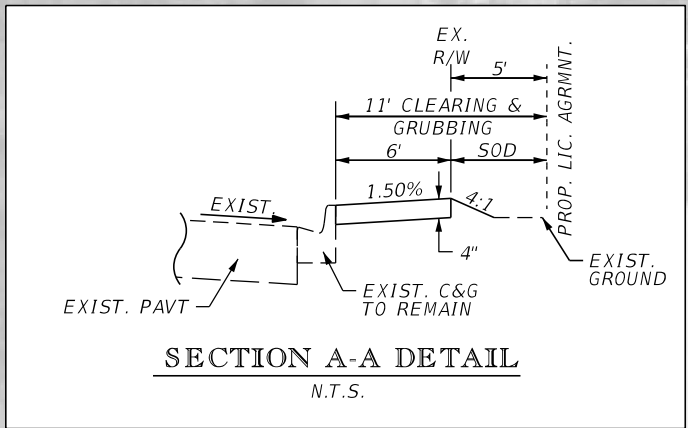
REVISIONS					
DATE	BY	DESCRIPTION	DATE	BY	DESCRIPTION

Kimley»Horn
 BRIAN A. GOOD, P.E.
 P.E. LICENSE NUMBER 56939
 445 24th STREET, SUITE 200
 VERO BEACH, FL 32960
 (772) 794-4100
 CERTIFICATE OF AUTHORIZATION: 00000696

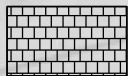
ST. LUCIE COUNTY
BOARD OF COUNTY COMMISSIONERS
ST. JAMES DRIVE
PEDESTRIAN WALKWAY

HORIZONTAL CONTROL PLAN

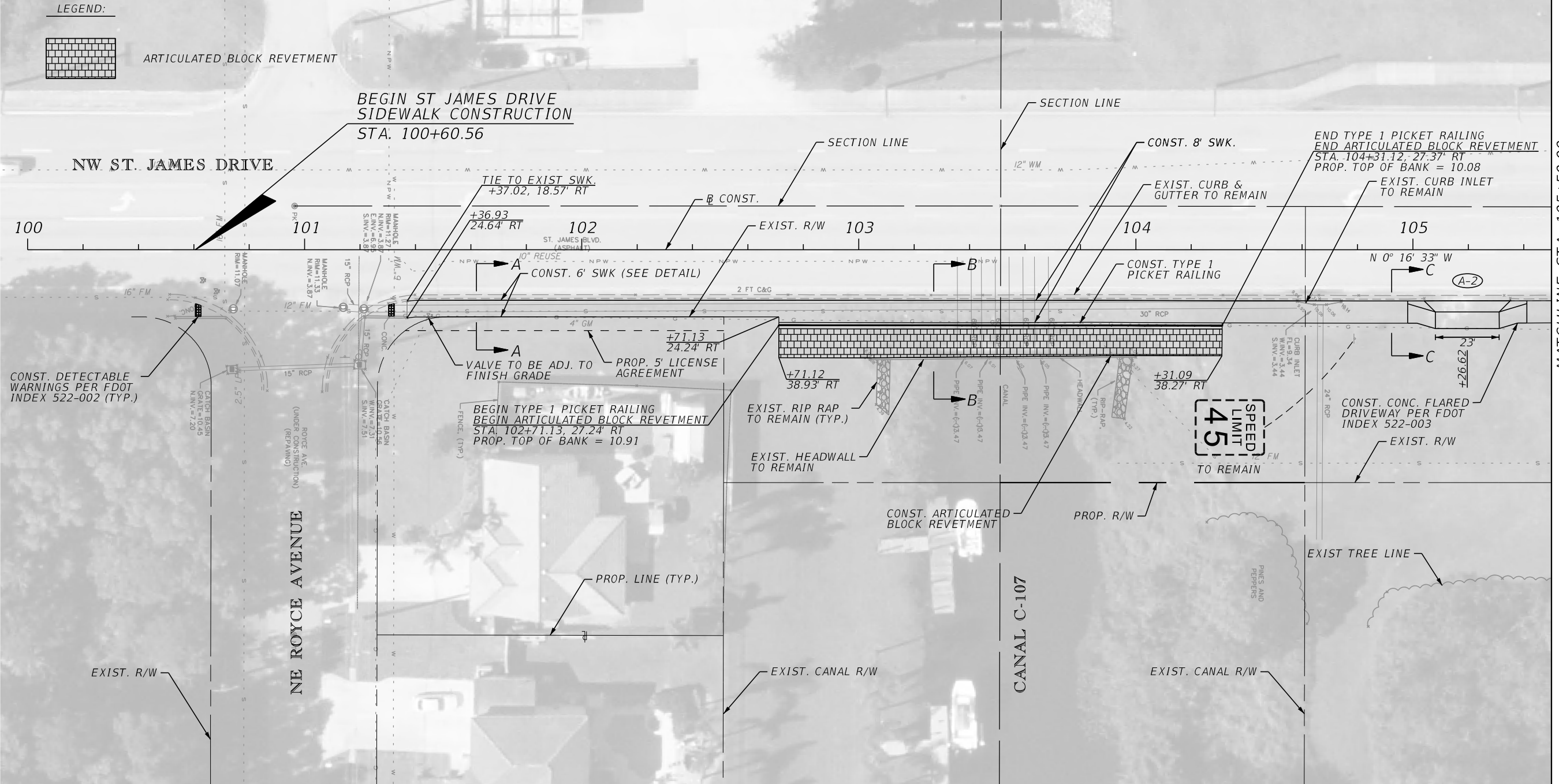
SHEET NO.
 4



LEGEND:



ARTICULATED BLOCK REVETMENT



MATCHLINE STA. 105+50.00

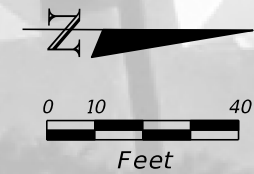
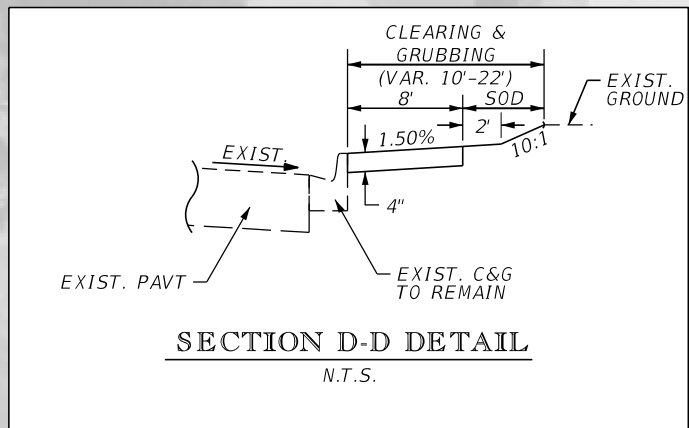
REVISIONS					
DATE	BY	DESCRIPTION	DATE	BY	DESCRIPTION

Kimley»Horn
 BRIAN A. GOOD, P.E.
 P.E. LICENSE NUMBER 56939
 445 24th STREET, SUITE 200
 VERO BEACH, FL 32960
 (772) 794-4100
 CERTIFICATE OF AUTHORIZATION: 00000696

ST. LUCIE COUNTY
BOARD OF COUNTY COMMISSIONERS
ST. JAMES DRIVE
PEDESTRIAN WALKWAY

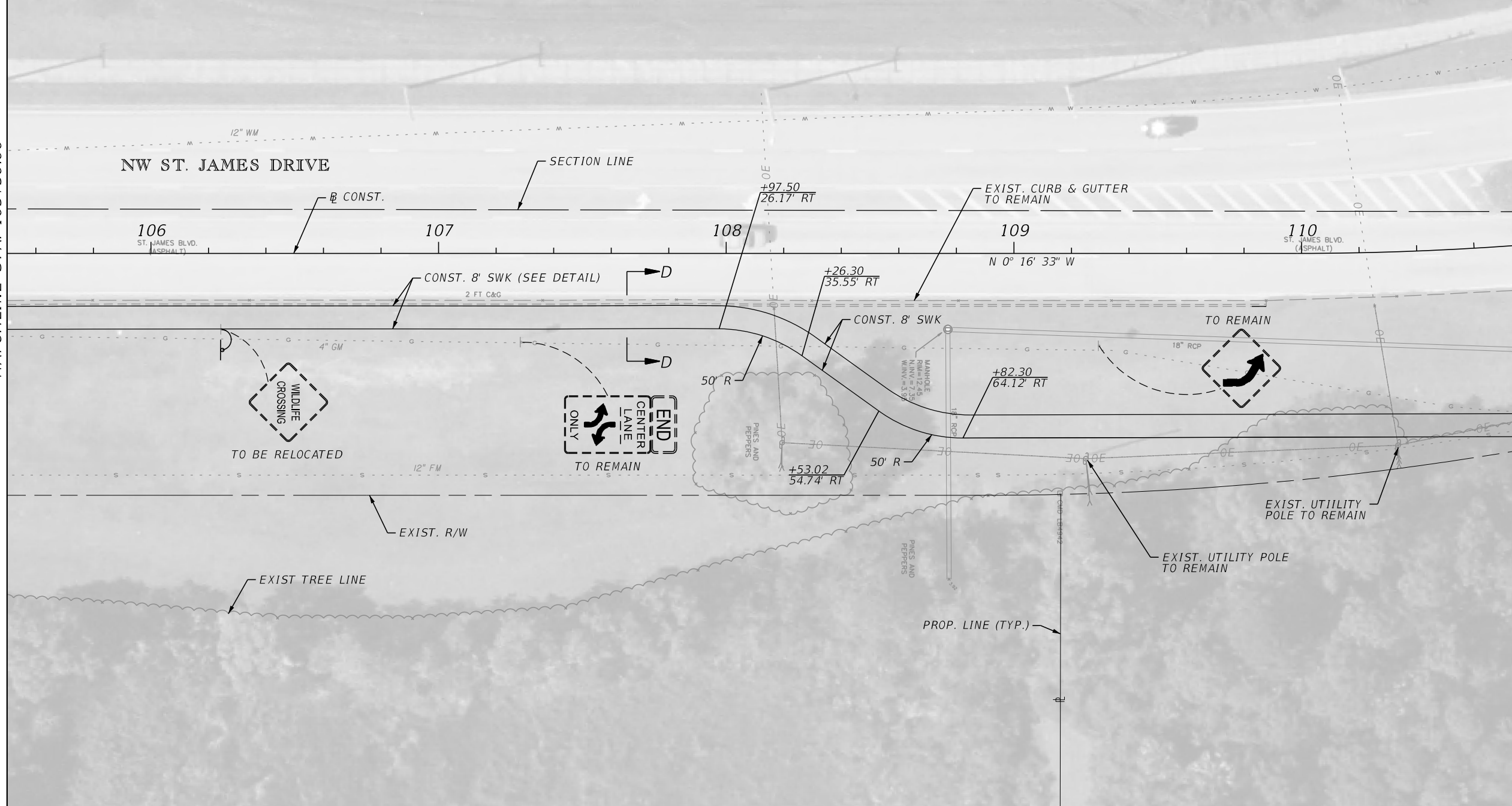
PLAN SHEET

SHEET NO.
5



MATCHLINE STA. 105+50.00

MATCHLINE STA. 110+80.00



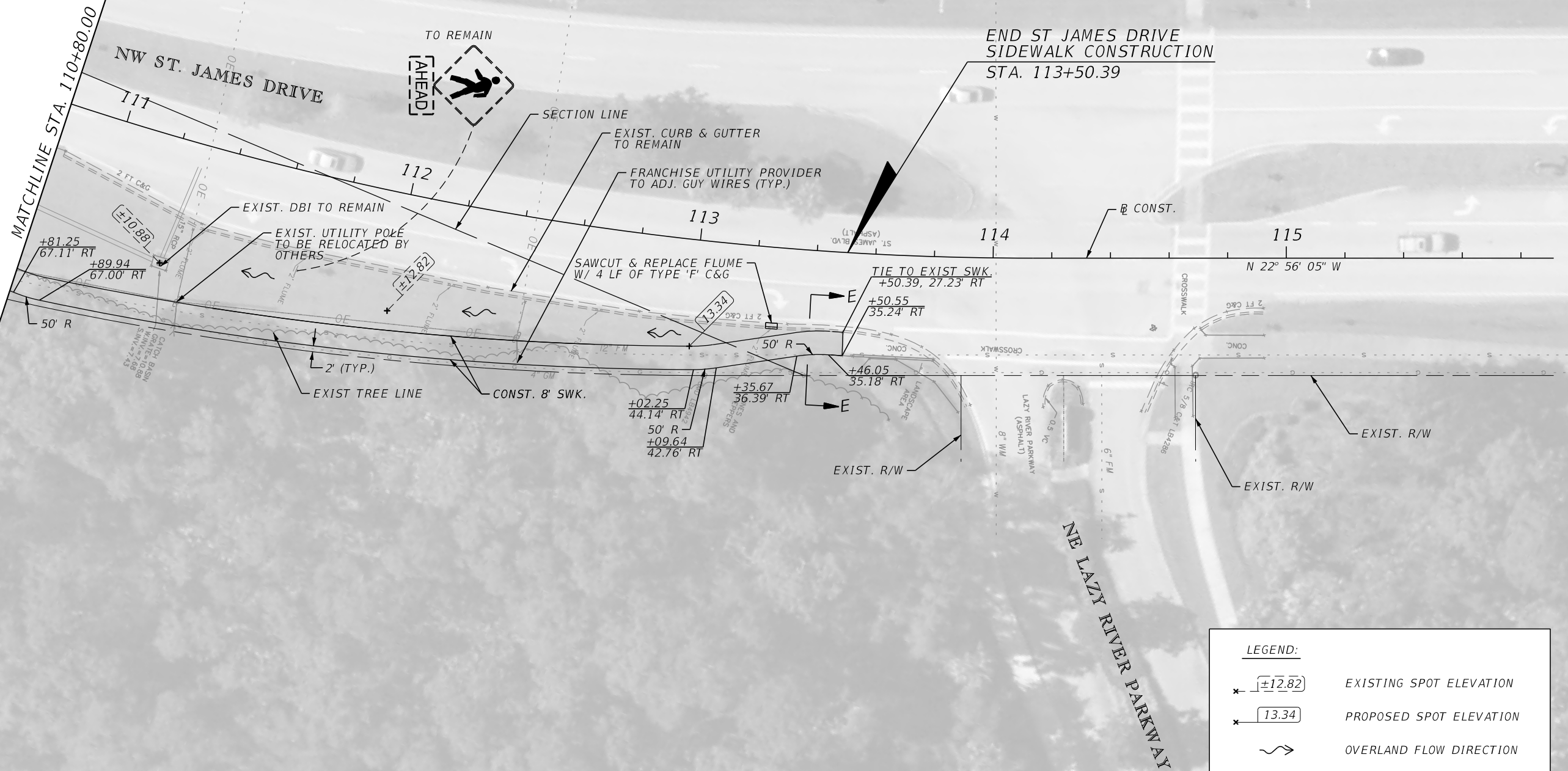
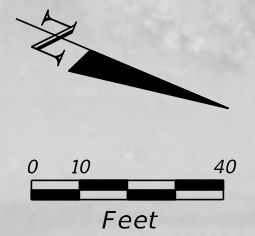
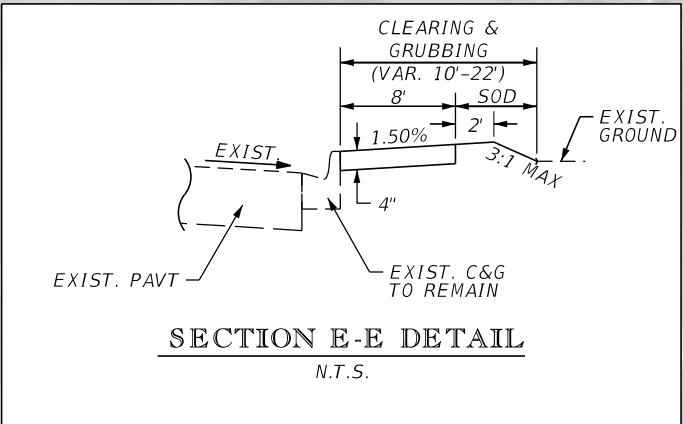
REVISIONS					
DATE	BY	DESCRIPTION	DATE	BY	DESCRIPTION

Kimley»Horn
 BRIAN A. GOOD, P.E.
 P.E. LICENSE NUMBER 56939
 445 24th STREET, SUITE 200
 VERO BEACH, FL 32960
 (772) 794-4100
 CERTIFICATE OF AUTHORIZATION: 00000696

ST. LUCIE COUNTY
BOARD OF COUNTY COMMISSIONERS
ST. JAMES DRIVE
PEDESTRIAN WALKWAY

PLAN SHEET

SHEET NO.
6



LEGEND:

	EXISTING SPOT ELEVATION
	PROPOSED SPOT ELEVATION
	OVERLAND FLOW DIRECTION

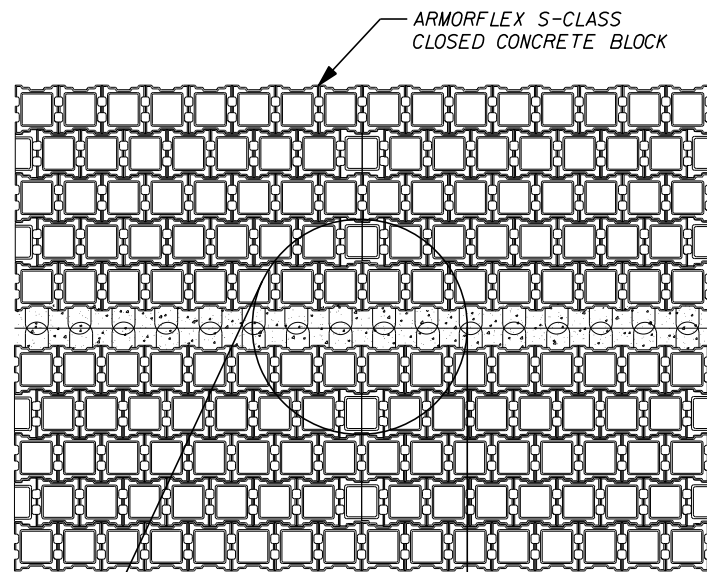
REVISIONS					
DATE	BY	DESCRIPTION	DATE	BY	DESCRIPTION

Kimley»Horn
 BRIAN A. GOOD, P.E.
 P.E. LICENSE NUMBER 56939
 445 24th STREET, SUITE 200
 VERO BEACH, FL 32960
 (772) 794-4100
 CERTIFICATE OF AUTHORIZATION: 00000696

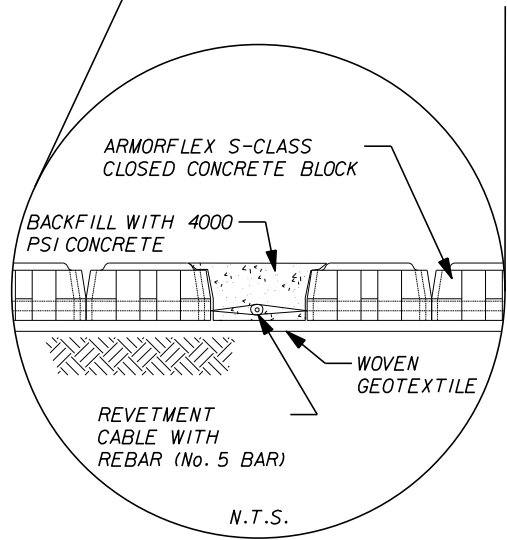
ST. LUCIE COUNTY
BOARD OF COUNTY COMMISSIONERS
ST. JAMES DRIVE
PEDESTRIAN WALKWAY

PLAN SHEET

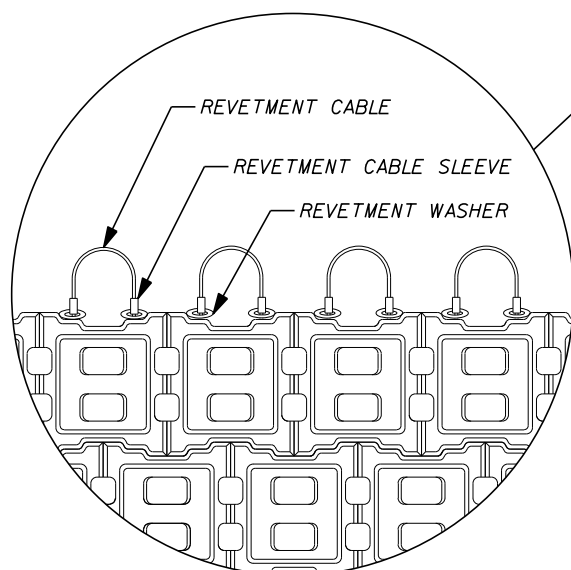
SHEET NO.
7



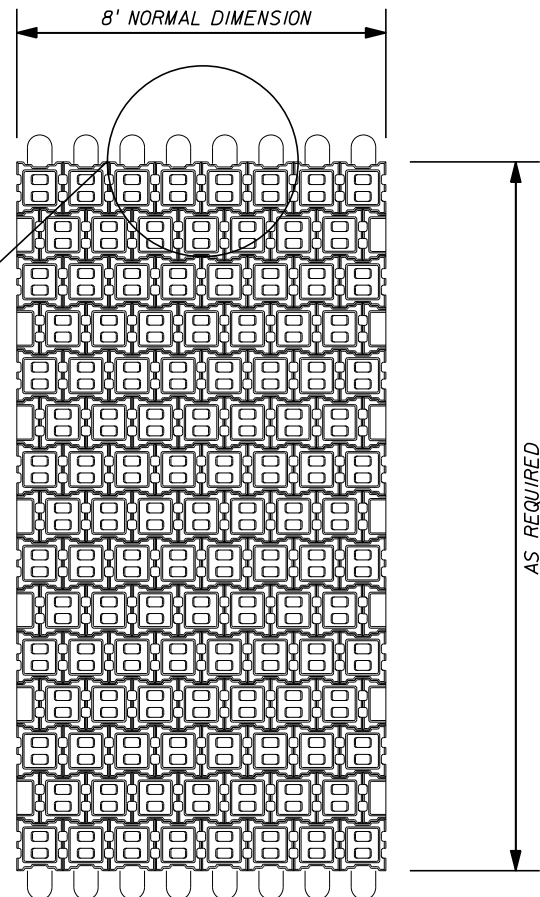
PLAN VIEW
N.T.S.



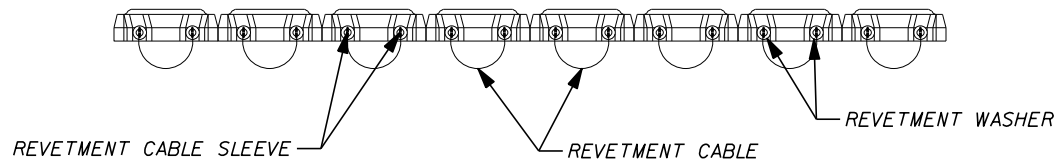
TYP. MAT TO MAT CONNECTION DETAIL
N.T.S.



N.T.S.



PLAN VIEW
N.T.S.



N.T.S.

TYP. ARTICULATED BLOCK RIPRAP MAT
N.T.S.

NOTE:

- ARTICULATED BLOCK REVETMENT SHALL MEET THE SPECIFICATION FOR ARMORFLEX CLASS 45S CLOSED CELL BLOCK, OR APPROVED OTHER MATERIAL.

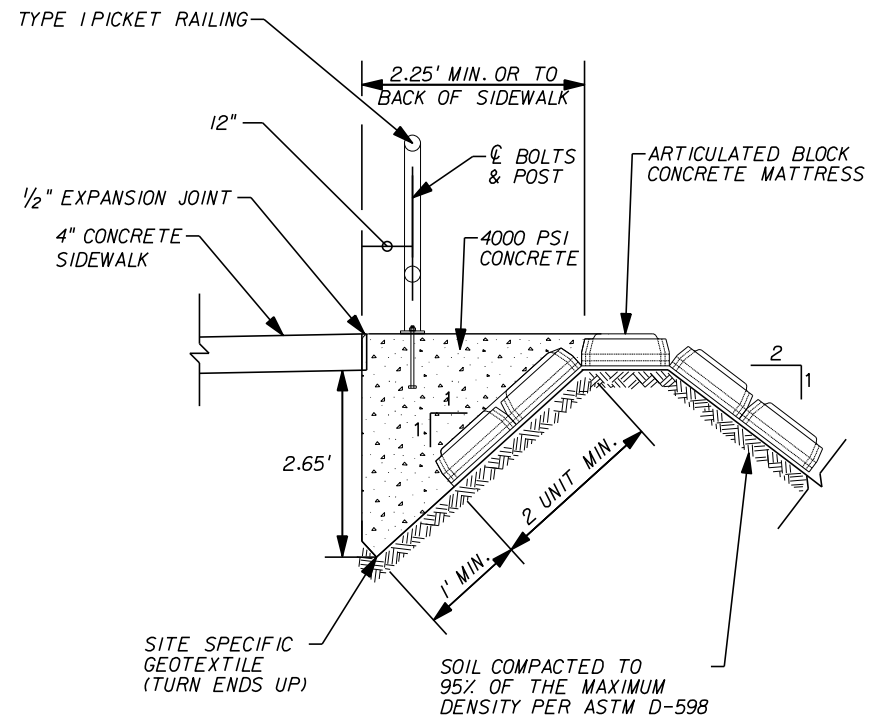
REVISIONS					
DATE	BY	DESCRIPTION	DATE	BY	DESCRIPTION

Kimley»Horn
 BRIAN A. GOOD, P.E.
 P.E. LICENSE NUMBER 56939
 445 24th STREET, SUITE 200
 VERO BEACH, FL 32960
 (772) 794-4100
 CERTIFICATE OF AUTHORIZATION: 00000696

ST. LUCIE COUNTY
BOARD OF COUNTY COMMISSIONERS
ST. JAMES DRIVE
PEDESTRIAN WALKWAY

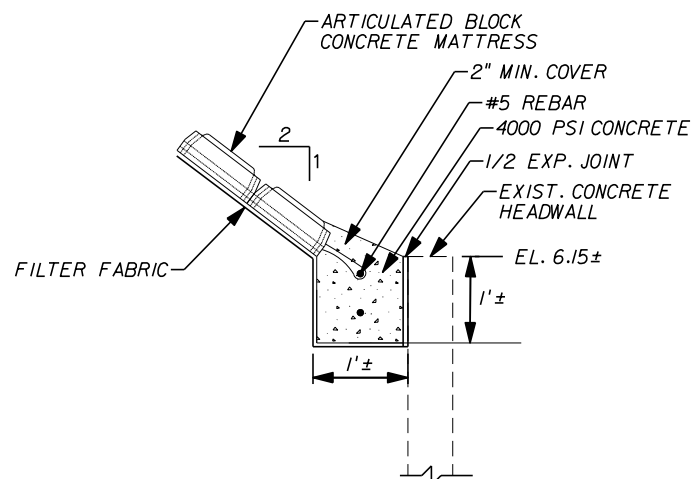
MISCELLANEOUS DETAILS

SHEET NO.
7A



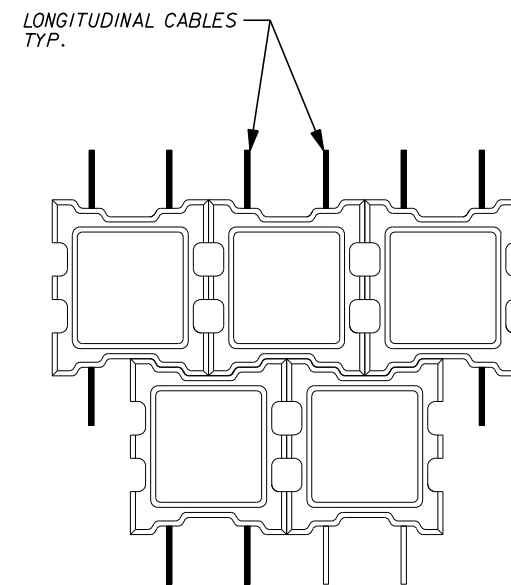
TYP. TOP OF SLOPE ANCHOR

N.T.S.



TYP. TOE OF SLOPE ANCHOR ADJACENT TO EXIST. CONC. HEADWALL

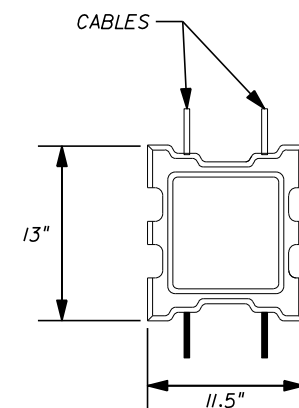
N.T.S.



PLAN VIEW

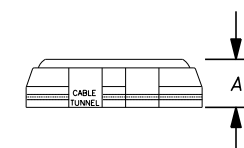
N.T.S.

UNIT THICKNESS "A"	
CLASS 45S	4.75"



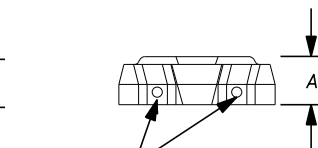
TOP VIEW

N.T.S.



SIDE VIEW

N.T.S.



END VIEW

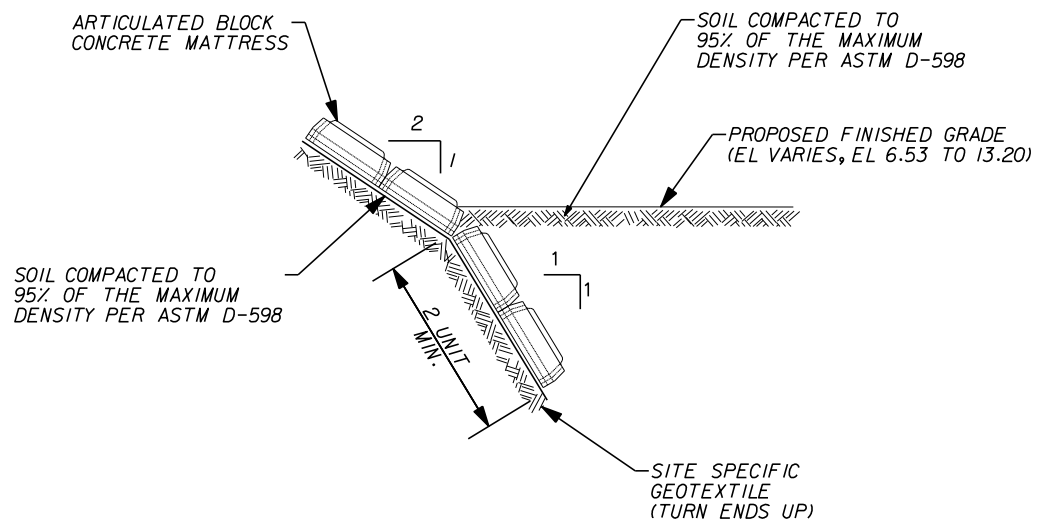
N.T.S.

ARTICULATED BLOCK RIPRAP

N.T.S.

NOTE:

- ARTICULATED BLOCK REVETMENT SHALL MEET THE SPECIFICATION FOR ARMORFLEX CLASS 45S CLOSED CELL BLOCK, OR APPROVED OTHER MATERIAL.
- TRANSVERSE CONTRACTION JOINTS TO BE CUT INTO TOP OF SLOPE ANCHOR EQUAL TO SIDEWALK CONTRACTION JOINTS.



TYP. TOE OF SLOPE ANCHOR BEYOND EXIST. CONC. HEADWALL

N.T.S.

REVISIONS					
DATE	BY	DESCRIPTION	DATE	BY	DESCRIPTION

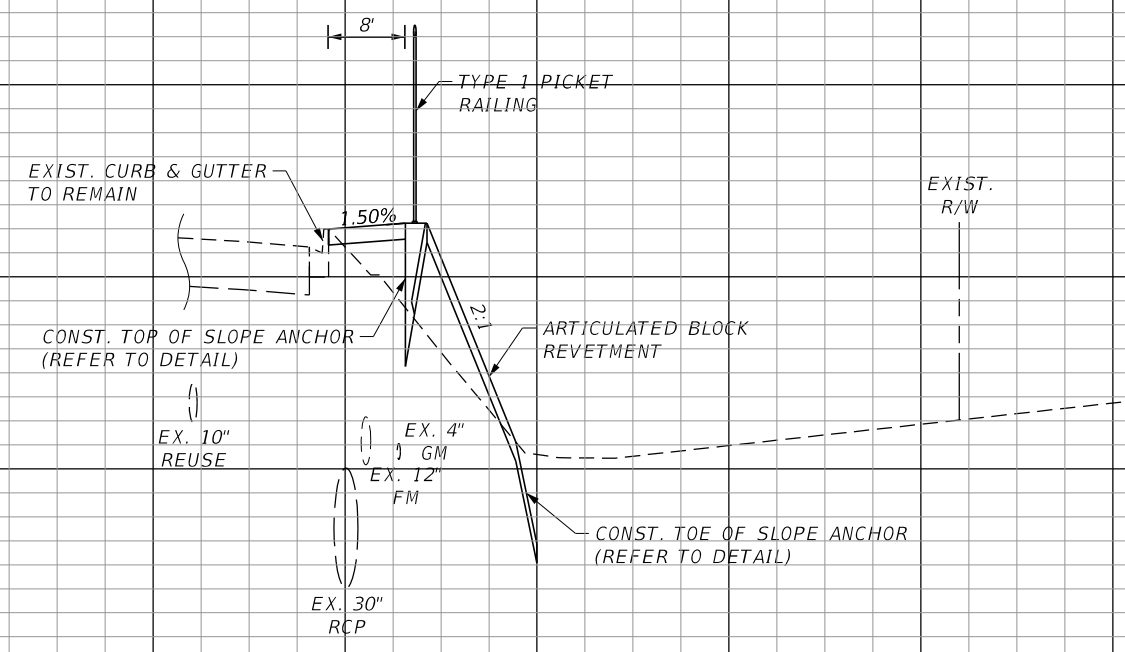
Kimley»Horn
 BRIAN A. GOOD, P.E.
 P.E. LICENSE NUMBER 56939
 445 24th STREET, SUITE 200
 VERO BEACH, FL 32960
 (772) 794-4100
 CERTIFICATE OF AUTHORIZATION: 00000696

**ST. LUCIE COUNTY
 BOARD OF COUNTY COMMISSIONERS
 ST. JAMES DRIVE
 PEDESTRIAN WALKWAY**

MISCELLANEOUS DETAILS

SHEET NO.
 7B

Regular Exc. Embankment
A V A V



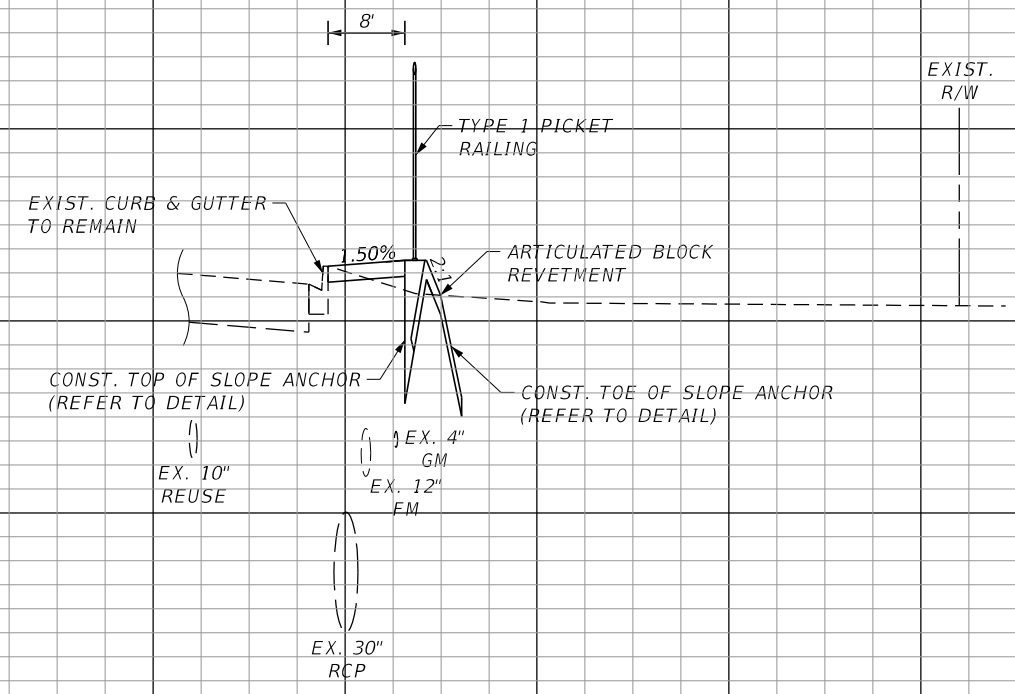
14
12
10
8
6
4
103+00.00

2.0

2.8

13.3

6.5



16
14
12
10
8
6
4
102+75.00

4.1

6.8

0.7

1.8

SCALE - HOR: 1"=20'
VER: 1"=4'

80 60 40 20 0 20 40 60 80 100 120 140 160

REVISIONS					
DATE	BY	DESCRIPTION	DATE	BY	DESCRIPTION

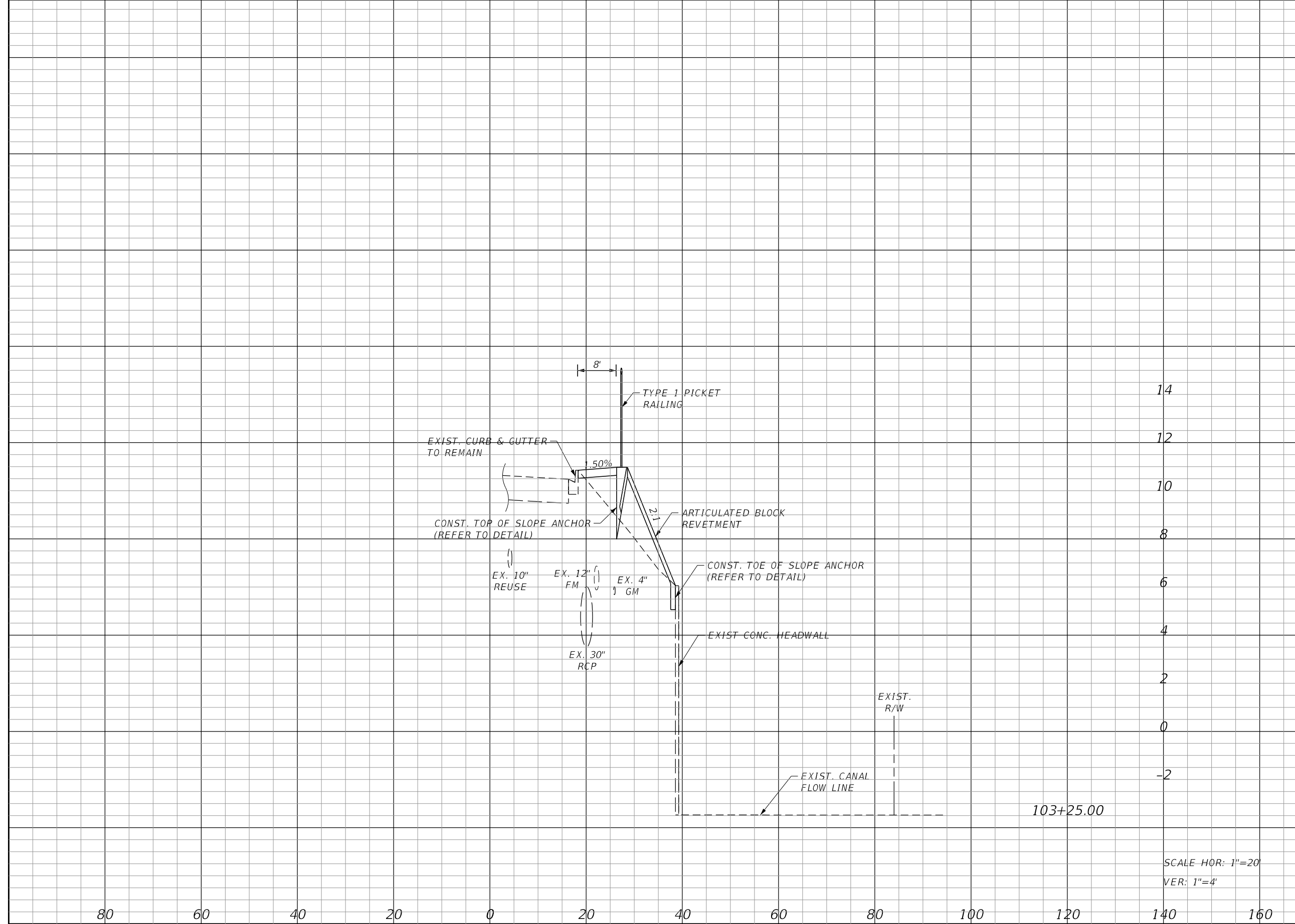
Kimley»Horn
 BRIAN A. GOOD, P.E.
 P.E. LICENSE NUMBER 56939
 445 24TH STREET, SUITE 200
 VERO BEACH, FL 32960
 (772) 794-4100
 CERTIFICATE OF AUTHORIZATION# 00000696

ST. LUCIE COUNTY
BOARD OF COUNTY COMMISSIONERS
ST JAMES DRIVE
PEDESTRIAN WALKWAY

ST JAMES DRIVE
CROSS SECTIONS

SHEET NO.
9

Regular		Exc.		Embankment	
A	V	A	V	A	V



14
12
10
8
6
4
2
0
-2

103+25.00

SCALE HOR: 1"=20'
VER: 1"=4'

1.6	1.7	17.3	14.2
-----	-----	------	------

REVISIONS			
DATE	BY	DESCRIPTION	

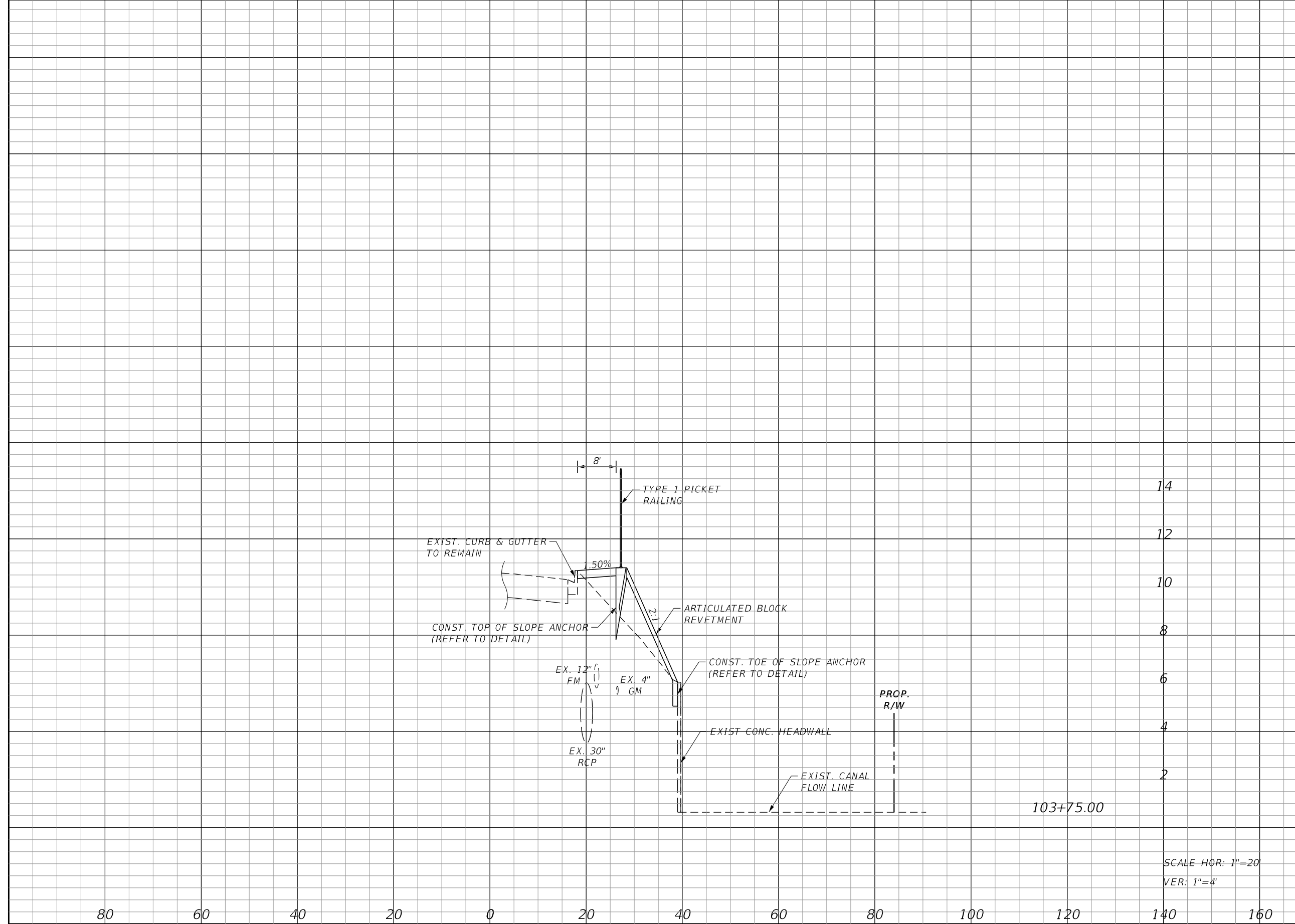
Kimley»Horn
 BRIAN A. GOOD, P.E.
 P.E. LICENSE NUMBER 56939
 445 24TH STREET, SUITE 200
 VERO BEACH, FL 32960
 (772) 794-4100
 CERTIFICATE OF AUTHORIZATION# 00000696

ST. LUCIE COUNTY
BOARD OF COUNTY COMMISSIONERS
ST JAMES DRIVE
PEDESTRIAN WALKWAY

ST JAMES DRIVE
CROSS SECTIONS

SHEET NO.
10

Regular		Exc.		Embankment	
A	V	A	V	A	V



14
12
10
8
6
4
2

103+75.00

SCALE - HOR: 1"=20'
VER: 1"=4'

1.8	1.6	15.1	14.3
-----	-----	------	------

REVISIONS					
DATE	BY	DESCRIPTION	DATE	BY	DESCRIPTION

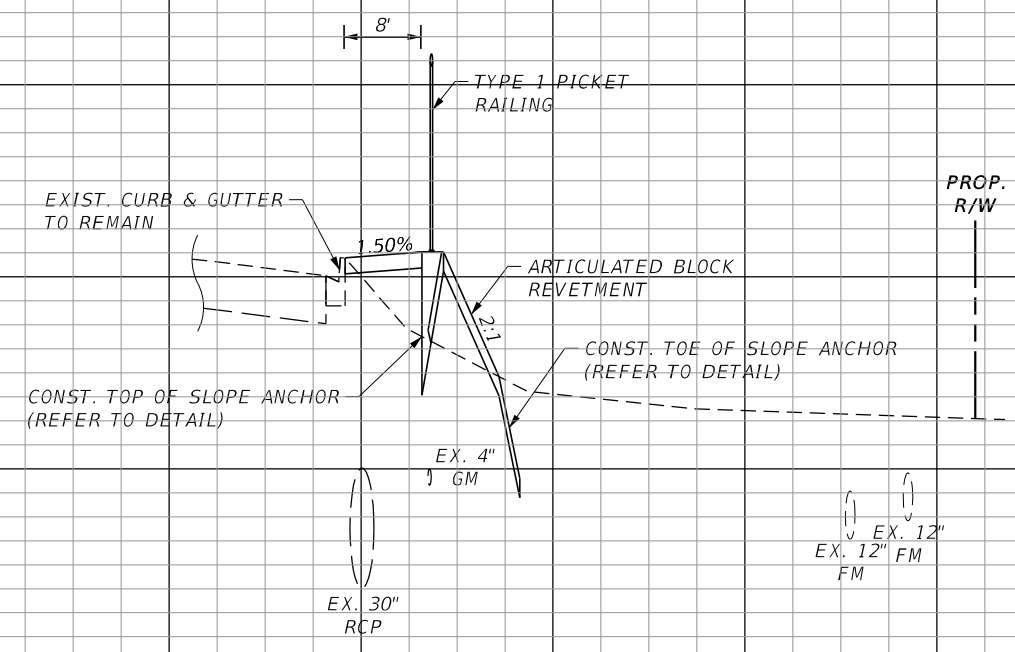
Kimley»Horn
 BRIAN A. GOOD, P.E.
 P.E. LICENSE NUMBER 56939
 445 24TH STREET, SUITE 200
 VERO BEACH, FL 32960
 (772) 794-4100
 CERTIFICATE OF AUTHORIZATION# 00000696

ST. LUCIE COUNTY
BOARD OF COUNTY COMMISSIONERS
ST JAMES DRIVE
PEDESTRIAN WALKWAY

ST JAMES DRIVE
CROSS SECTIONS

SHEET NO.
12

Regular Exc. Embankment
A V A V



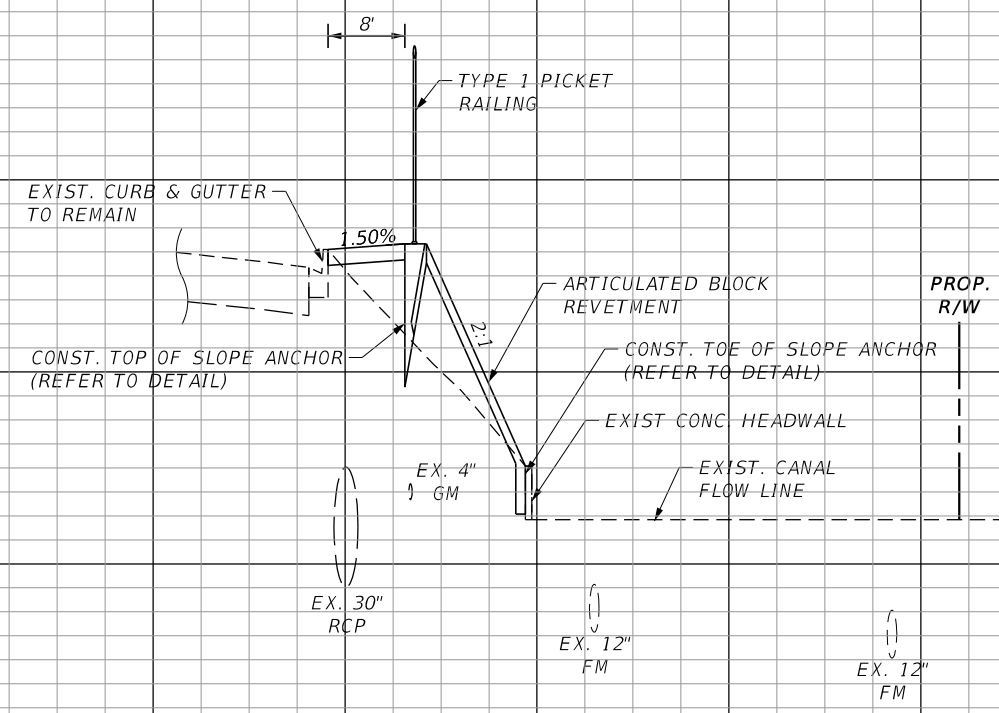
14
12
10
8
6
4
104+25.00

1.9

1.8

10.0

11.4



14
12
10
8
6
4
2
104+00.00

1.9

1.7

14.6

13.8

SCALE - HOR: 1"=20'
VER: 1"=4'

80 60 40 20 0 20 40 60 80 100 120 140 160

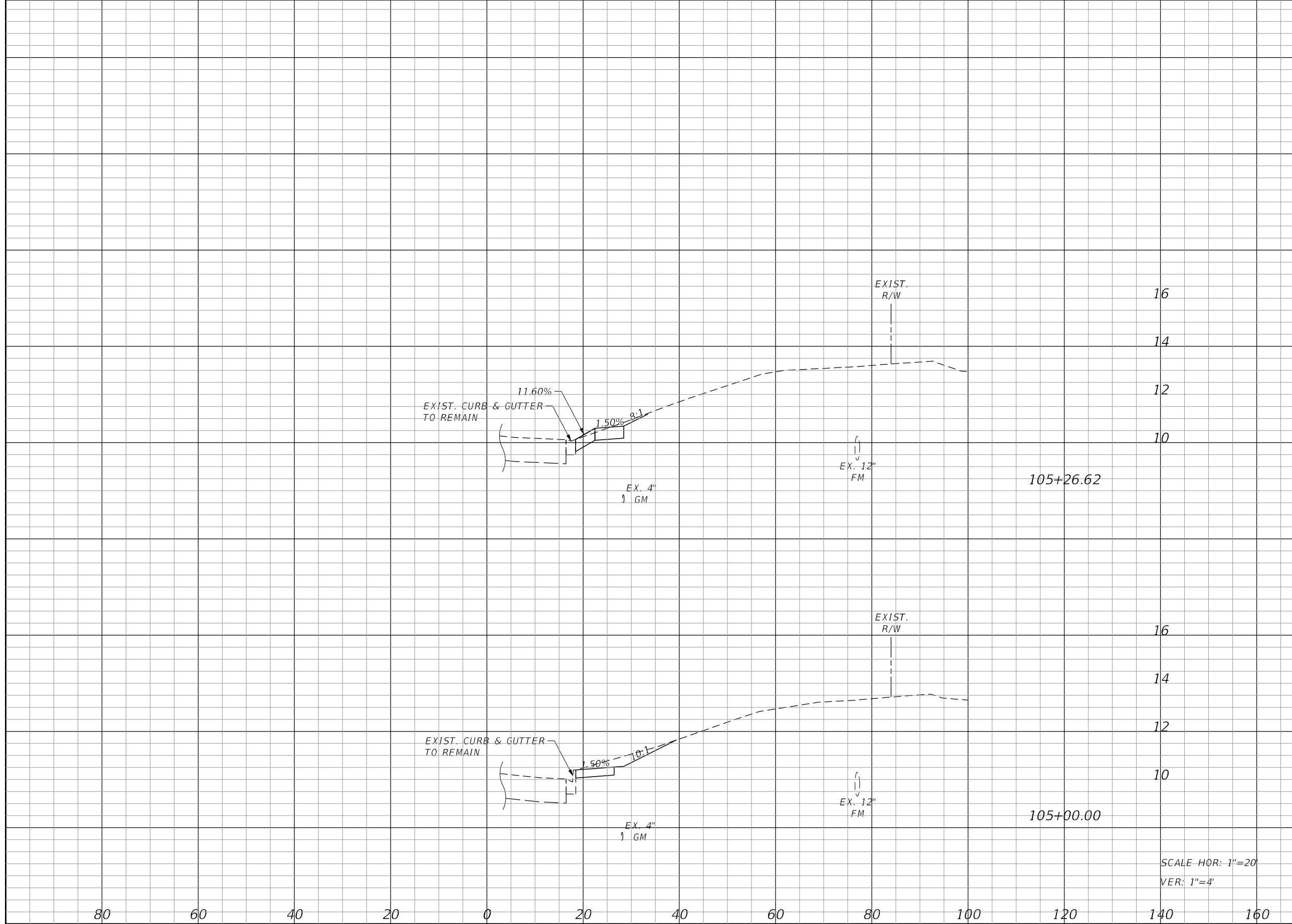
REVISIONS					
DATE	BY	DESCRIPTION	DATE	BY	DESCRIPTION

Kimley»Horn
 BRIAN A. GOOD, P.E.
 P.E. LICENSE NUMBER 56939
 445 24TH STREET, SUITE 200
 VERO BEACH, FL 32960
 (772) 794-4100
 CERTIFICATE OF AUTHORIZATION# 00000696

ST. LUCIE COUNTY
BOARD OF COUNTY COMMISSIONERS
ST JAMES DRIVE
PEDESTRIAN WALKWAY

ST JAMES DRIVE
CROSS SECTIONS

SHEET NO.
13



Regular		Exc.		Embankment	
A	V	A	V	A	V
0.5		2.7		0.7	0.3
6.9		12.2		0.0	13.9

SCALE - HOR: 1"=20'
VER: 1"=4'

REVISIONS					
DATE	BY	DESCRIPTION	DATE	BY	DESCRIPTION

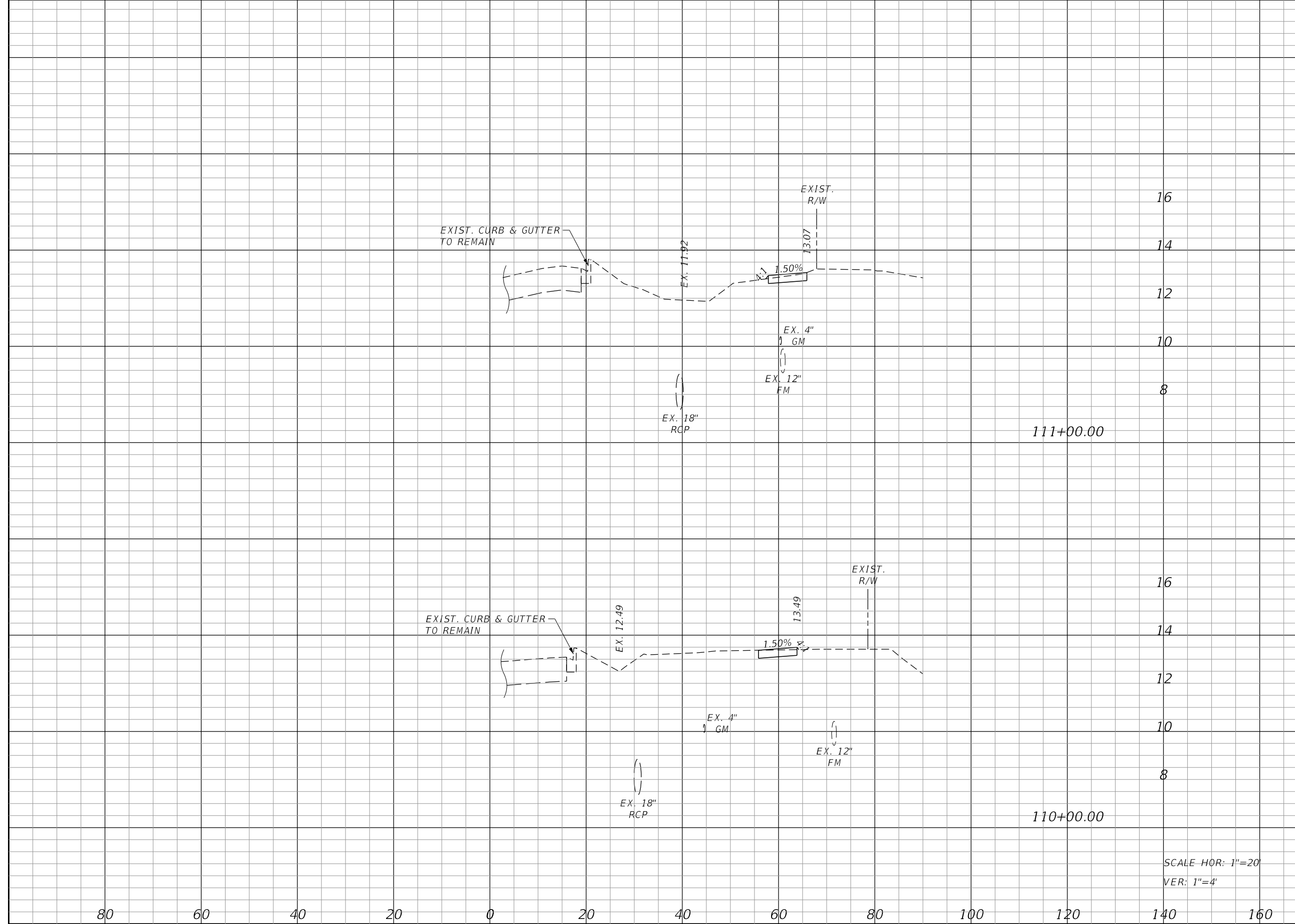
Kimley»Horn
 BRIAN A. GOOD, P.E.
 P.E. LICENSE NUMBER 56939
 445 24TH STREET, SUITE 200
 VERO BEACH, FL 32960
 (772) 794-4100
 CERTIFICATE OF AUTHORIZATION# 00000696

ST. LUCIE COUNTY
BOARD OF COUNTY COMMISSIONERS
ST JAMES DRIVE
PEDESTRIAN WALKWAY

ST JAMES DRIVE
CROSS SECTIONS

SHEET NO.
14

Regular		Exc.		Embankment	
A	V	A	V	A	V



3.2	10.2	0.0	0.0
2.3	8.7	0.0	0.0

SCALE - HOR: 1"=20'
VER: 1"=4'

REVISIONS					
DATE	BY	DESCRIPTION	DATE	BY	DESCRIPTION

Kimley»Horn
 BRIAN A. GOOD, P.E.
 P.E. LICENSE NUMBER 56939
 445 24TH STREET, SUITE 200
 VERO BEACH, FL 32960
 (772) 794-4100
 CERTIFICATE OF AUTHORIZATION# 00000696

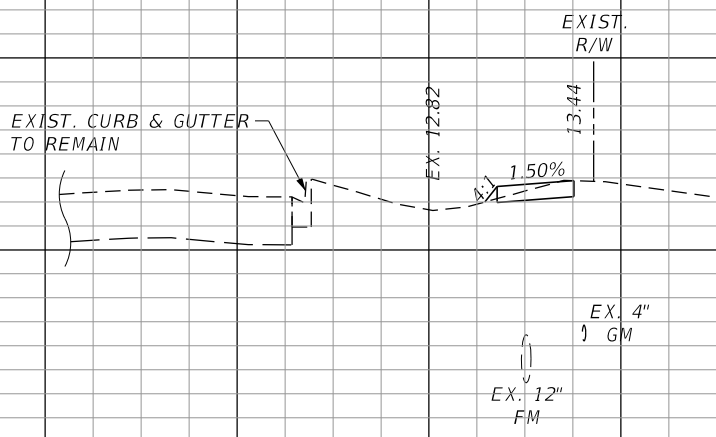
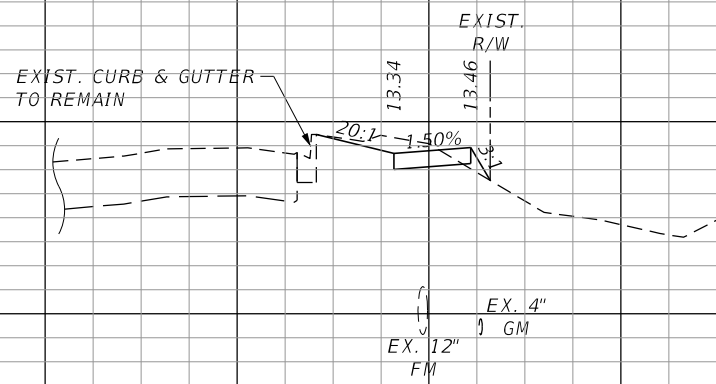
ST. LUCIE COUNTY
BOARD OF COUNTY COMMISSIONERS
ST JAMES DRIVE
PEDESTRIAN WALKWAY

ST JAMES DRIVE
CROSS SECTIONS

SHEET NO.
17

SUMMARY OF EARTHWORK
 EXCAVATION = 147 CY
 EMBANKMENT = 97 CY

END EARTHWORK
 STA. 113+50.55



SCALE - HOR: 1"=20'
 VER: 1"=4'

Station	Regular		Exc.		Embankment	
	A	V	A	V	A	V
113+00.00	4.0	4.0	0.5	10.9	0.5	1.3
112+00.00	1.9	1.9	0.2	9.4	0.2	0.4
END EARTHWORK STA. 113+50.55	4.0	4.0	0.5	7.5	0.5	0.9

REVISIONS					
DATE	BY	DESCRIPTION	DATE	BY	DESCRIPTION

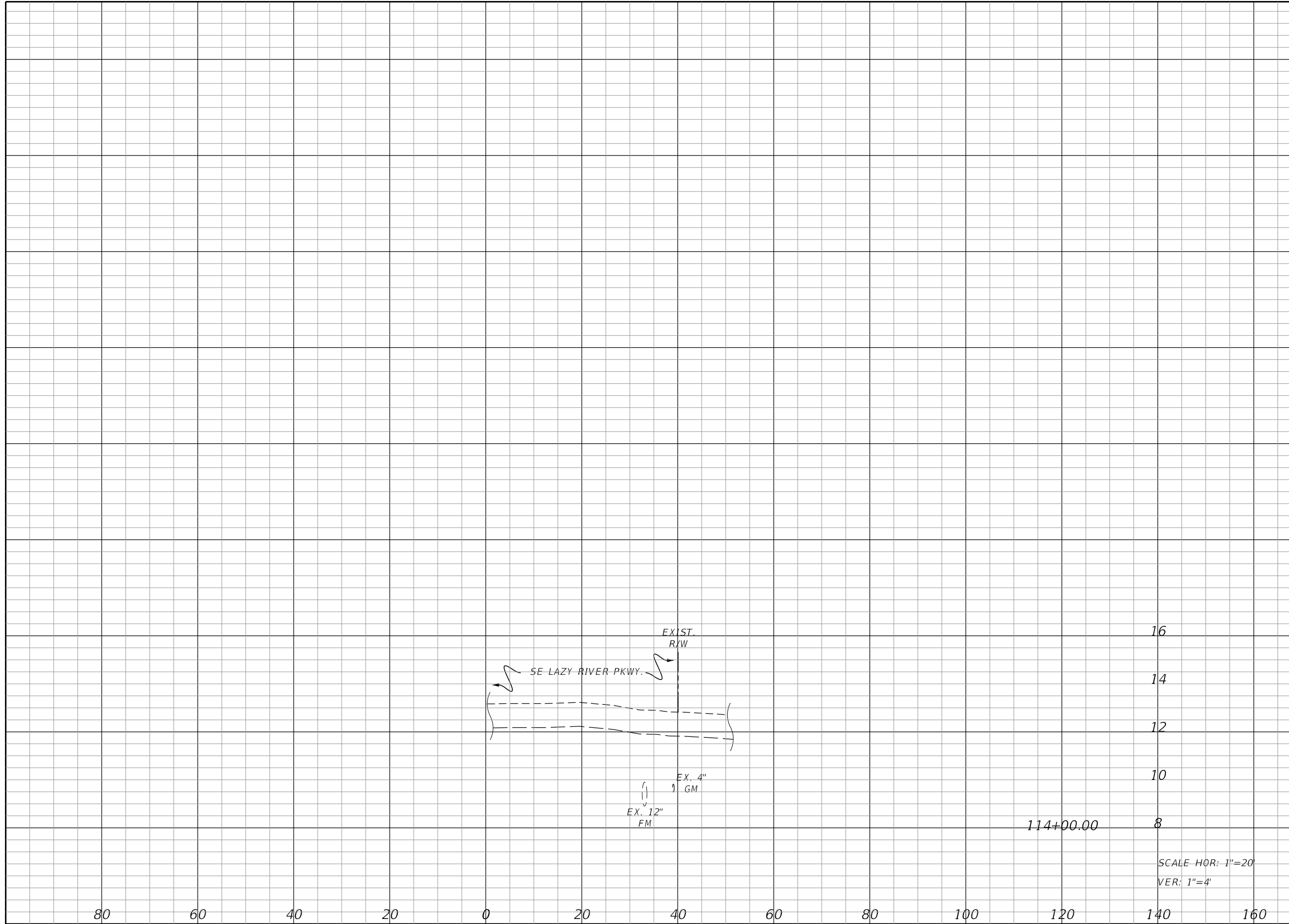
Kimley»Horn
 BRIAN A. GOOD, P.E.
 P.E. LICENSE NUMBER 56939
 445 24TH STREET, SUITE 200
 VERO BEACH, FL 32960
 (772) 794-4100
 CERTIFICATE OF AUTHORIZATION# 00000696

ST. LUCIE COUNTY
BOARD OF COUNTY COMMISSIONERS
ST JAMES DRIVE
PEDESTRIAN WALKWAY

ST JAMES DRIVE
CROSS SECTIONS

SHEET NO.
 18

Regular		Exc.		Embankment	
A	V	A	V	A	V



114+00.00

SCALE - HOR: 1"=20'
VER: 1"=4'

REVISIONS					
DATE	BY	DESCRIPTION	DATE	BY	DESCRIPTION

Kimley»Horn
 BRIAN A. GOOD, P.E.
 P.E. LICENSE NUMBER 56939
 445 24TH STREET, SUITE 200
 VERO BEACH, FL 32960
 (772) 794-4100
 CERTIFICATE OF AUTHORIZATION# 00000696

ST. LUCIE COUNTY
BOARD OF COUNTY COMMISSIONERS
ST JAMES DRIVE
PEDESTRIAN WALKWAY

ST JAMES DRIVE
CROSS SECTIONS

SHEET NO.
19

1. SITE DESCRIPTION

A. CONSTRUCTION ACTIVITY: ST. JAMES DRIVE SIDEWALK AND DRAINAGE IMPROVEMENTS.

B. SEQUENCE OF MAJOR SOIL DISTURBING ACTIVITIES: SOIL DISTURBING ACTIVITIES WILL TAKE PLACE DURING MUCH OF THE ANTICIPATED CONSTRUCTION PERIOD OF THIS PROJECT. THE FOLLOWING SOIL DISTURBING ACTIVITIES ARE LISTED IN THE APPROXIMATE ORDER IN WHICH THEY ARE ANTICIPATED TO OCCUR.

1. INSTALL STABILIZED CONSTRUCTION ENTRANCE(S)
2. CLEARING AND GRUBBING
3. STORMWATER MANAGEMENT FACILITY CONSTRUCTION
4. EXCAVATION OF SOILS
5. EMBANKMENT CONSTRUCTION
6. STABILIZATION AND TEMPORARY SODDING
7. SIDEWALK GRADING AND CONSTRUCTION
8. FINAL GRADING AND SODDING

C. TOTAL PROJECT AREA: 2.05 AC
TOTAL AREA TO BE DISTURBED: 0.45 AC

D. RUNOFF DATA:

THE FOLLOWING IS A LIST OF THE DRAINAGE BASIN, THE AREA OF THE BASIN AND THE RUNOFF COEFFICIENT BEFORE, DURING, AND AFTER CONSTRUCTION.

BASIN	AREA (AC.)	BEFORE CONSTRUCTION	DURING CONSTRUCTION	AFTER CONSTRUCTION
ST. JAMES DR	2.05	0.52	0.56	0.59

E. SITE MAP: SEE KEY SHEET

F. RECEIVING WATERS: ST. LUCIE RIVER

2. CONTROLS

A. EROSION AND SEDIMENT CONTROLS: THE SOIL EROSION AND SEDIMENT CONTROLS SHALL BE MAINTAINED BY THE CONTRACTOR TO MINIMIZE THE AMOUNT OF SOIL DISTURBED, PREVENT OFFSITE RUNOFF FROM DISCHARGING ACROSS DISTURBED AREAS, AND REMOVE ON-SITE SEDIMENT PRIOR TO DISCHARGE OF RUNOFF FROM THE SITE.

ALL ITEMS REPRESENTED IN THE FOLLOWING DISCUSSION ARE TREATED IN DETAIL IN THE "FLORIDA DEPARTMENT OF TRANSPORTATION STANDARD SPECIFICATION FOR ROAD AND BRIDGE CONSTRUCTION OR WILL BE IMPLEMENTED BY THE ENGINEER IN A MANNER APPROPRIATE TO ENVIRONMENTALLY SENSITIVE CONSTRUCTION PRACTICES. THE CONTRACTOR WILL GENERATE SITE SPECIFIC EROSION CONTROL PLAN INCLUDING AN IMPLEMENTATION SCHEDULE FOR EACH PHASE OF CONSTRUCTION OPERATIONS OR ACTIVITIES. THE CONTRACTOR WILL ALSO BE REQUIRED TO MODIFY THE PLAN OR MATERIALS TO ADAPT TO SEASONAL VARIATIONS AND SUPPLY CONTRACT TIME SCHEDULES FOR THE IMPLEMENTATION OF EACH SUBUNIT.

(A) STABILIZATION PRACTICES: DURING CONSTRUCTION THE CONTRACTOR WILL PROVIDE TEMPORARY SEEDING FOR AREAS WHICH HAVE BEEN CLEARED AND NOT REWORKED WITHIN 14 CALENDAR DAYS. THE ENTIRE CLEARED AND UNPAVED PORTION OF THE PROJECT WILL BE SODDED UPON COMPLETION. BARE SOIL AREAS WILL BE KEPT TO A MINIMUM. STABILIZATION PRACTICES WILL INCLUDE:

- PERMANENT SODDING
- LIMITING STEEP SLOPES
- MINIMIZING THE AREA OF DISTURBED SOILS AT ANY GIVEN TIME
- PRESERVATION OF NATURAL VEGETATION
- SOIL RETAINING MEASURES
- DUST CONTROL

(B) STRUCTURAL PRACTICES WILL INCLUDE:

- STAKED SILT FENCES (LF)
- SYNTHETIC BALES (LF)
- ROCK BAGS (EA)
- RETENTION/DETENTION PONDS
- STORM DRAIN INLET PROTECTION

(C) PHASING OF CONTROLS

PHASE I - INSTALLATION OF ENVIRONMENTAL CONTROL FEATURES

A. ENVIRONMENTAL CONTROL FEATURES AS PROVIDED IN PLANS QUANTITIES ARE TO BE INSTALLED THROUGHOUT THE CLEARING AND GRUBBING LIMITS OF ENVIRONMENTALLY SENSITIVE AREAS AS SHOWN IN PLANS (PRIOR TO CLEARING AND GRUBBING).

B. THE CONTRACTOR WILL BE REQUIRED TO PREPARE A SITE SPECIFIC EROSION CONTROL PLAN ALONG WITH A SPECIFIC CONSTRUCTION SCHEDULE FOR IMPLEMENTATION. THE CONTRACTOR WILL ALSO BE REQUIRED TO MODIFY THE PLAN OR MATERIALS TO ADAPT TO SEASONAL VARIATIONS.

PHASE II - CLEARING AND GRUBBING

CLEARING AND GRUBBING SHALL BE DONE AS INDICATED ON THE TYPICAL SECTIONS OR AS NOTED IN THE PLANS.

PHASE III - EXCAVATION AND EMBANKMENT

ENVIRONMENTAL CONTROLS INCLUDING SYNTHETIC BALES, SILT FENCES, SEDIMENTATION BASINS AND OTHER CONTROLS, AS APPROPRIATE, SHALL BE IN PLACE PRIOR TO THE INITIATION OF EMBANKMENT AND SURCHARGE AREA CONSTRUCTION.

PHASE IV - DRAINAGE SYSTEM OR ENVIRONMENTAL CONTROL FEATURES

A. ENVIRONMENTAL CONTROL FEATURES AS PROVIDED IN PLANS QUANTITIES ARE TO BE INSTALLED IN ALL AREAS OF EXCAVATION OR FILL FOR DRAINAGE SYSTEM OR STRUCTURE CONSTRUCTION PRIOR TO SUCH EXCAVATION OR FILL. ALL STREAMS OR DITCHES ARE TO BE PROTECTED FROM EROSION OR SILTATION BY THE METHODS DETAILED IN THE STORMWATER POLLUTION PREVENTION PLAN (SWPPP). INLET ENTRANCES ARE ALSO TO BE PROTECTED FROM SILTATION AS DETAILED IN THE SWPPP. THESE INCLUDE STAKED SYNTHETIC BALES, SEDIMENT BASINS, TURBIDITY BARRIERS, SILT FENCE BARRIERS AND OTHERS, AS APPROPRIATE.

B. THE CONTRACTOR WILL BE RESPONSIBLE FOR MONITORING ANY ACTIVITIES FOR VIOLATION OF WATER QUALITY STANDARDS AS THEY RELATE TO TURBIDITY (29 NTU'S ABOVE BACKGROUND). TESTING WILL TAKE PLACE TO SUBSTANTIATE THE INTENT OF THE PROJECT PERMITS THROUGHOUT THE DURATION OF THE PROJECT. IF THE WATER QUALITY STANDARD IS VIOLATED, SEDIMENT AND EROSION CONTROL MEASURES WILL BE REEVALUATED AND RE-INSTALLED AS DIRECTED BY THE ENGINEER.

PHASE V - PERMANENT ENVIRONMENTAL CONTROLS

TEMPORARY ENVIRONMENTAL CONTROLS WILL BE REMOVED AFTER NEW SIDEWALK HAS BEEN OPENED, AND PERMANENT EROSION, SEDIMENT AND STORM WATER CONTROL ARE IN PLACE AND FUNCTIONING. FINAL CLEAN UP WILL TAKE PLACE AND ANY TEMPORARY SURFACE WATER DIVERSIONS OR CONTROL FEATURES WILL BE CONNECTED TO THE PERMITTED STORMWATER MANAGEMENT SYSTEM.

B. STORMWATER MANAGEMENT: STORMWATER MANAGEMENT WILL BE VIA THE EXISTING STORMWATER MANAGEMENT SYSTEM.

REVISIONS						 BRIAN A. GOOD, P.E. P.E. LICENSE NUMBER 56939 445 24th STREET, SUITE 200 VERO BEACH, FL 32960 (772) 794-4100 CERTIFICATE OF AUTHORIZATION: 00000696	ST. LUCIE COUNTY BOARD OF COUNTY COMMISSIONERS ST. JAMES DRIVE PEDESTRIAN WALKWAY	EROSION CONTROL GENERAL NOTES	SHEET NO.
DATE	BY	DESCRIPTION	DATE	BY	DESCRIPTION				20

C. OTHER CONTROLS

- A) WASTE DISPOSAL: THE CONTRACTOR WILL PROVIDE LITTER CONTROL AND COLLECTION WITHIN THE PROJECT BOUNDARIES DURING CONSTRUCTION ACTIVITIES. ALL FERTILIZER, HYDROCARBON, OR OTHER CHEMICAL CONTAINERS SHALL BE DISPOSED OF BY THE CONTRACTOR ACCORDING TO EPA'S STANDARD
- B) OFF-SITE VEHICLE TRACKING: WILL BE CONTROLLED BY THE FOLLOWING METHODS:
 - HAUL ROADS DAMPENED FOR DUST CONTROL
 - LOADED HAUL TRUCKS TO BE COVERED WITH TARPULIN
 - EXCESS DIRT ON ROADS TO BE REMOVED DAILY
 - SOIL TRACKING PREVENTION DEVICE TYPE A (INDEX 106)
- C) SANITARY WASTE: ANY FIELD OFFICES WILL HAVE PORTABLE TOILET FACILITIES OR THE CONTRACTOR WILL OBTAIN PERMITS FOR SEWAGE TREATMENT IN ACCORDANCE WITH 10D-6 F.A.C. "STANDARDS FOR ON-SITE SEWAGE DISPOSAL SYSTEMS".
- D) FERTILIZERS AND PESTICIDES: FERTILIZERS WILL BE USED ON THIS PROJECT IN ACCORDANCE WITH "FDOT STANDARD SPECIFICATIONS FOR ROAD AND BRIDGE CONSTRUCTION" SECTION 982. TO AVOID NUTRIENT LOADING TO SURFACE WATERS, FERTILIZERS USED ON THIS PROJECT WILL NOT BE APPLIED WITHIN FIFTY (50) FEET OF ANY SURFACE WATERS WITHIN THE PROJECT LIMITS.

D. PERMITS

THE FOLLOWING PERMITS HAVE BEEN OBTAIN FOR THE PROJECT:
 SFWMD ENVIRONMENTAL RESOURCE PERMIT

THE CONTRACTOR IS RESPONSIBLE FOR OBTAINING THE FOLLOWING PERMITS:

- FDEP - NPDES PERMIT
- SFWMD - TEMPORARY DEWATERING PERMIT (IF NEEDED)

ADDITIONAL PERMIT FEES ARE TO BE INCLUDED IN THE COST OF MOBILIZATION 101-1

3. MAINTENANCE

THE CONTRACTOR SHALL BE RESPONSIBLE FOR DAILY INSPECTION AND MAINTENANCE OF ALL EROSION CONTROL DEVICES THROUGHOUT THE CONSTRUCTION PHASE OF THE PROJECT. MAINTENANCE SHALL BE CONDUCTED IN ACCORDANCE WITH "FDOT STANDARD SPECIFICATIONS FOR ROAD AND BRIDGE CONSTRUCTION" SECTION 104 AND "FDOT ROADWAY AND TRAFFIC DESIGN STANDARDS" STANDARD INDICES 100 - 105 OR AS DIRECTED BY THE ENGINEER.

THE CONTRACTOR WILL BE RESPONSIBLE FOR MAINTENANCE AND REPAIRS OF EROSION AND SEDIMENT CONTROL DEVICES, AND REMOVAL OF EROSION AND SEDIMENT CONTROL DEVICES UNTIL ACCEPTANCE OF THE COMPLETED PROJECT BY FDOT.

MAINTENANCE AND REPAIR REQUIRED FOR THE CONTROL AND ABATEMENT OF EROSION AND WATER POLLUTION SHALL BE INCLUDED IN THE COST OF PAY ITEM 104-2A.

THE FOLLOWING PRACTICES WILL BE USED TO MAINTAIN EROSION AND SEDIMENT CONTROLS:

GENERAL:

THE CONTRACTOR SHALL INSTALL AND MAINTAIN RAIN GAUGES ON THE PROJECT SITE AND RECORD WEEKLY RAINFALL IN ACCORDANCE WITH NPDES PERMIT NO. FLR 100000. ALL CONTROL MEASURES WILL BE MAINTAINED BY THE CONTRACTOR.

ALL MEASURES WILL BE MAINTAINED IN GOOD WORKING ORDER. IF A REPAIR IS NECESSARY, IT WILL BE INITIATED WITHIN 24 HOURS OF REPORT.

STRUCTURAL PRACTICES CONTROLS:

BUILT-UP SEDIMENT WILL BE REMOVED FROM SILT FENCE AND STAKED TURBIDITY BARRIERS NOT LATER THAN WHEN IT HAS REACHED ONE-THIRD THE HEIGHT OF THE FENCE.

TEMPORARY AND PERMANENT SEEDING, SODDING AND PLANTING WILL BE INSPECTED FOR BARE SPOTS, WASHOUTS, AND HEALTHY GROWTH.

SOIL TRACKING PREVENTION DEVICE, TYPE A SHALL BE MAINTAINED TO PREVENT CLOGGING OF ROCK BEDDING WHICH MAY IMPEDE THE USEFULNESS OF THE STRUCTURE.

FLOATING TURBIDITY BARRIER WILL BE MAINTAINED WITH RESPECT TO DEPTH OF SEDIMENT AND ENSURE THAT THE FABRIC IS ATTACHED SECURELY TO THE FLOATS AND ANCHORED PROPERLY AT THE BOTTOM FOR PROPER SEDIMENT CONTROL.

4. INSPECTION

ALL EROSION AND WATER POLLUTION ABATEMENT AND CONTROL MEASURES WILL BE INSPECTED DAILY BY THE CONTRACTOR.

INSPECTIONS ARE TO BE PERFORMED BY QUALIFIED PERSONNEL WHO HAVE COMPLETED THE FLORIDA STORM WATER, EROSION AND SEDIMENT CONTROL TRAINING AND CERTIFICATION PROGRAM FOR INSPECTORS AND CONTRACTORS WHO HAVE PASSED THE EXAMINATION.

INSPECTION AREAS: LOCATIONS OR AREAS TO BE INSPECTED INCLUDE BUT ARE NOT LIMITED TO:

- DISCHARGE POINTS TO WATERS OF THE UNITED STATES
- DISCHARGE POINTS TO MS4 FACILITIES
- AREAS NOT MEETING THE "FINAL STABILIZATION" CRITERIA
- MATERIALS STORAGE/STOCKPILES
- SEDIMENTATION FACILITIES
- STRUCTURAL FACILITIES
- VEHICLE ENTRANCES/EXITS
- ON-SITE STORMWATER MANAGEMENT SYSTEMS

THE CONTRACTOR SHALL USE THE CONSTRUCTION INSPECTION REPORT FORM 650-040-03 FOR DAILY INSPECTIONS.

THE CONTRACTOR'S DAILY INSPECTIONS REQUIRED FOR THE CONTROL AND ABATEMENT OF EROSION AND WATER POLLUTION SHALL BE INCLUDED IN THE COST OF PAY ITEM 104-2A.

TRACKING AND REPORTING

THE CONTRACTOR IS RESPONSIBLE FOR COMPLETING THE INSPECTION REPORT FORM 650-040-03 EVERY 7 DAYS AND AFTER ANY 0.50 INCH (OR MORE) RAINFALL EVENT. A COPY OF THE INSPECTION REPORT SHALL BE SUBMITTED TO THE ENGINEER WEEKLY.

THE COUNTY SHALL MAINTAIN ALL RECORDS SUBMITTED BY THE CONTRACTOR.


PREPARATION OF THE CONTRACTOR'S WEEKLY REPORTS OF INSPECTIONS, MAINTENANCE AND REPAIRS REQUIRED FOR THE CONTROL AND ABATEMENT OF EROSION AND WATER POLLUTION SHALL BE INCLUDED IN THE COST OF PAY ITEM 104-2A.

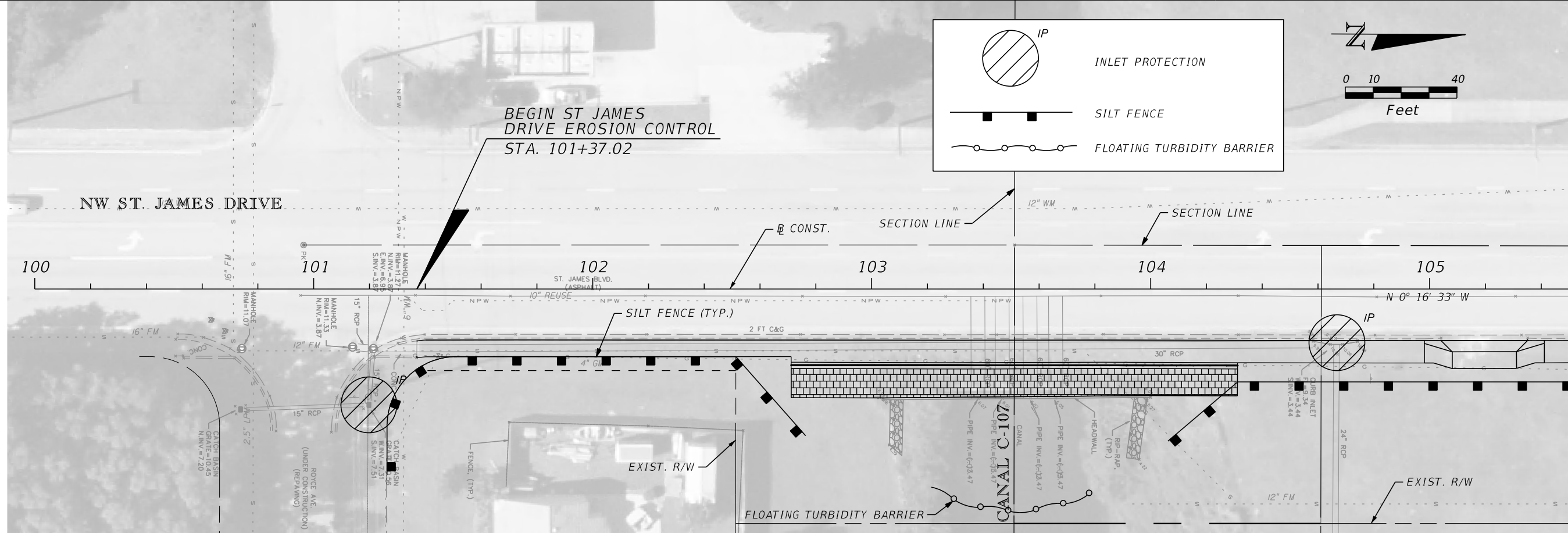
5. NON-STORM WATER DISCHARGE AND HAZARDOUS WASTE

THE CONTRACTOR WILL PROVIDE ST. LUCIE COUNTY WITH AN EROSION CONTROL PLAN THAT INCORPORATES THE CONSTRUCTION SCHEDULE AND WILL INCLUDE SPILL REPORTING AND RESPONSE. WHEN THE CONTRACTOR ENCOUNTERS A SPILL, CONSTRUCTION WILL STOP WORK AND WORK WILL NOT RESUME UNTIL DIRECTED BY THE ENGINEER. DISPOSITION OF HAZARDOUS WASTE WILL BE MADE IN ACCORDANCE WITH ANY REQUIREMENTS AND REGULATIONS OF ANY LOCAL, STATE OR FEDERAL AGENCY HAVING JURISDICTION.

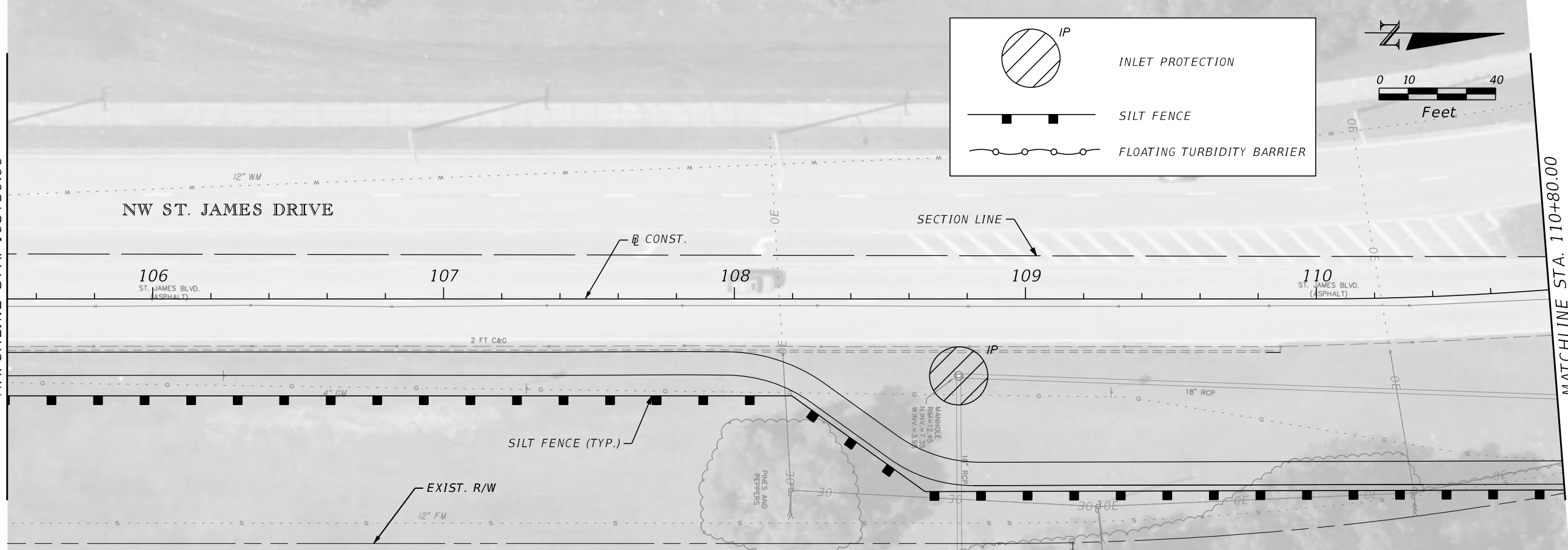
6. REFERENCES

THE CONSTRUCTION PLANS AND SPECIFICATIONS FOR ST. JAMES DRIVE PEDESTRIAN WALKWAY PROJECT ARE HEREBY REFERENCED AND MADE PART OF THIS STORMWATER POLLUTION PREVENTION PLAN.

REVISIONS						 BRIAN A. GOOD, P.E. P.E. LICENSE NUMBER 56939 445 24th STREET, SUITE 200 VERO BEACH, FL 32960 (772) 794-4100 CERTIFICATE OF AUTHORIZATION: 00000696	ST. LUCIE COUNTY BOARD OF COUNTY COMMISSIONERS ST. JAMES DRIVE PEDESTRIAN WALKWAY	EROSION CONTROL GENERAL NOTES	SHEET NO.
DATE	BY	DESCRIPTION	DATE	BY	DESCRIPTION				21



MATCHLINE STA. 105+50.00



MATCHLINE STA. 105+50.00

MATCHLINE STA. 110+80.00

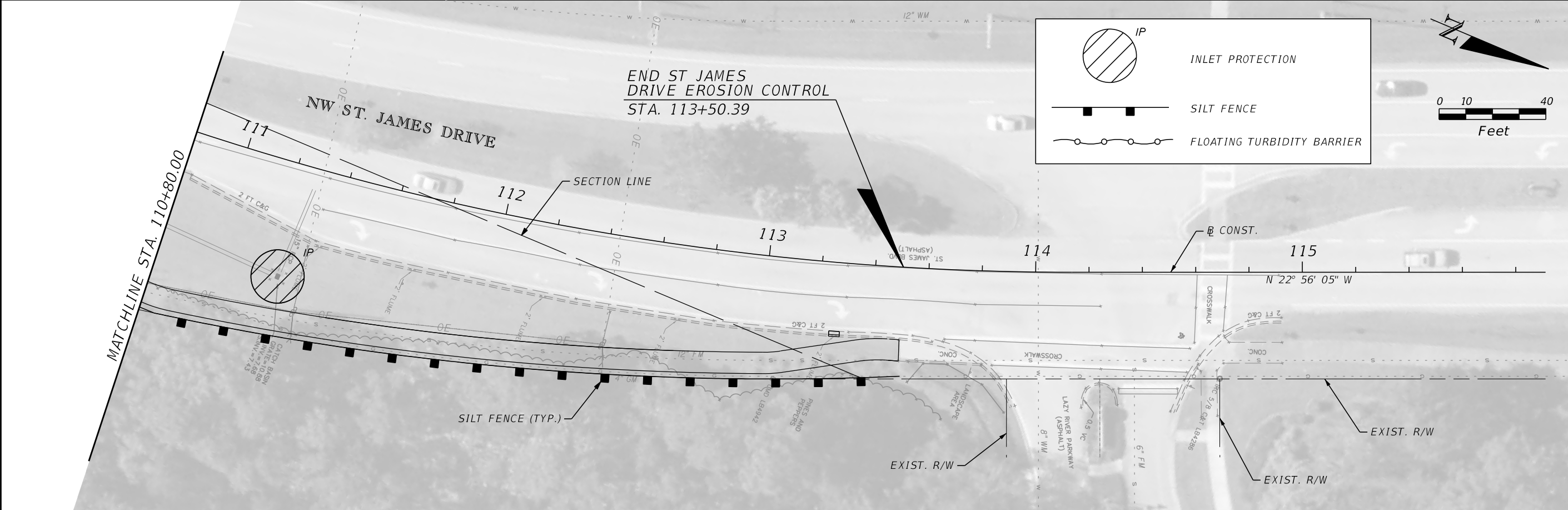
REVISIONS					
DATE	BY	DESCRIPTION	DATE	BY	DESCRIPTION

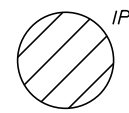

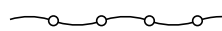
Kimley»Horn
 BRIAN A. GOOD, P.E.
 P.E. LICENSE NUMBER 56939
 445 24th STREET, SUITE 200
 VERO BEACH, FL 32960
 (772) 794-4100
 CERTIFICATE OF AUTHORIZATION: 00000696

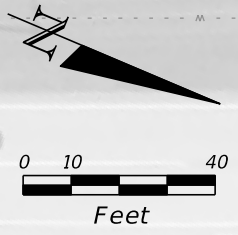
ST. LUCIE COUNTY
BOARD OF COUNTY COMMISSIONERS
ST JAMES DRIVE
PEDESTRIAN WALKWAY

EROSION CONTROL

SHEET NO.
22



 IP
 INLET PROTECTION
 SILT FENCE
 FLOATING TURBIDITY BARRIER



REVISIONS					
DATE	BY	DESCRIPTION	DATE	BY	DESCRIPTION

Kimley»Horn
 BRIAN A. GOOD, P.E.
 P.E. LICENSE NUMBER 56939
 445 24th STREET, SUITE 200
 VERO BEACH, FL 32960
 (772) 794-4100
 CERTIFICATE OF AUTHORIZATION: 00000696

ST. LUCIE COUNTY
BOARD OF COUNTY COMMISSIONERS
ST JAMES DRIVE
PEDESTRIAN WALKWAY

EROSION CONTROL
 SHEET NO. 23