

Property Owner:	PEBB TRADITION SG3, LLC 7900 Glades Road, Suite 600 Boca Raton, FL 33434
Developer:	PEBB TRADITION SG3, LLC 7900 Glades Road, Suite 600 Boca Raton, FL 33434
Land Planner / Landscape Architect:	Lucido & Associates 701 E Ocean Boulevard Stuart, FL 34984
Engineer:	Kimley Horn 445 24th Street, Suite 200 Vero Beach, FL 32960
Surveyor:	Caulfield & Wheeler Inc. 410 S.E. Port St. Lucie Blvd Port St. Lucie, Florida 34984
Architect:	BDG Architects 100 North Laura Street, Suite 801 Jacksonville, FL 32202
Traffic Engineer:	Mackenzie Engineering & Planning, Inc. 1172 SW 30th Street, Suite 500 Palm City, FL 34980

Landscape Details
P25-084 - PSLUSD 5211E-21
City of Port St. Lucie, FL

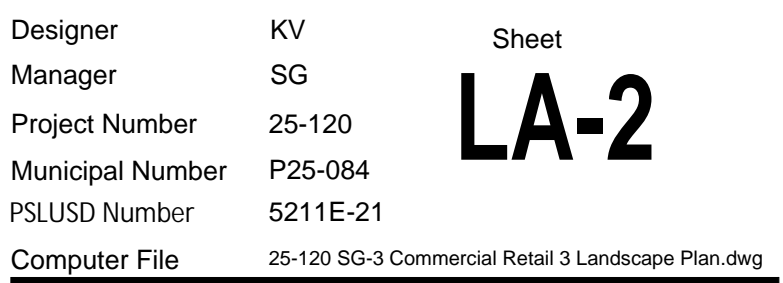
[illegible]

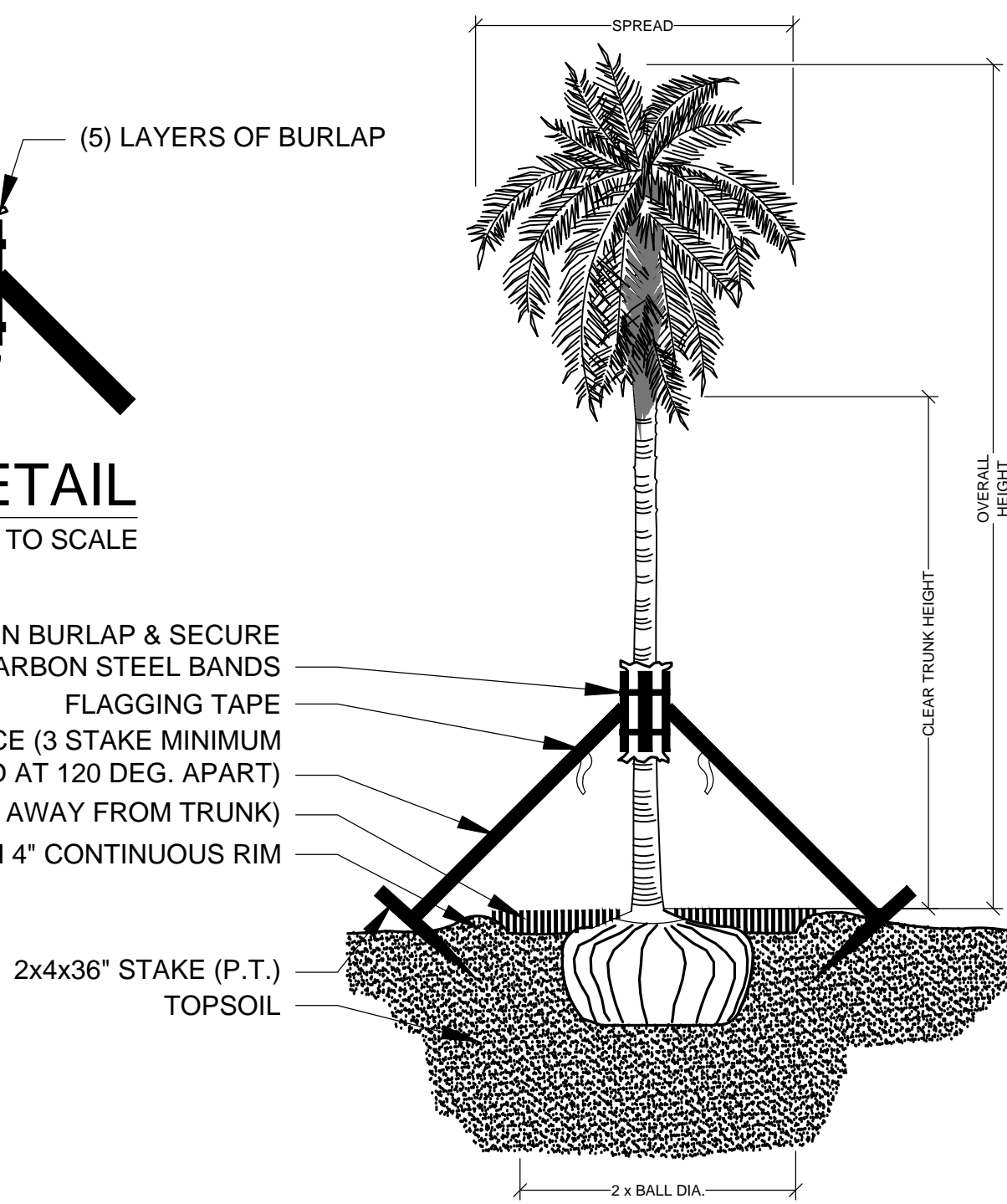
Diagram illustrating the correct planting method for a tree, showing the root ball, trunk, and surrounding soil/mulch. The diagram includes the following labels and instructions:

- BRACE HT. = $\frac{1}{3}$ OF TREE HT. OR 6' FROM GRADE. WHICHEVER IS GREATER
- FLAGGING TAPE
- PLANT SO THAT ROOTBALL IS 3" ABOVE FINISHED GRADE
- REMOVE BURLAP $\frac{1}{3}$ OF BALL
- 2" MULCH (KEEP AWAY FROM TRUNK)
- TOPSOIL WATER & TAMP TO REMOVE AIR POCKETS
- 4" SAUCER
- 2"x4" BRACE (3 STAKE MINIMUM SPACED AT 120 DEG. APART)
- 2"x4"x36" STAKE (P.T.)
- TOPSOIL
- SPREAD
- OVERALL HEIGHT
- SPECIFIED CL.
- 2" BALL DIA.

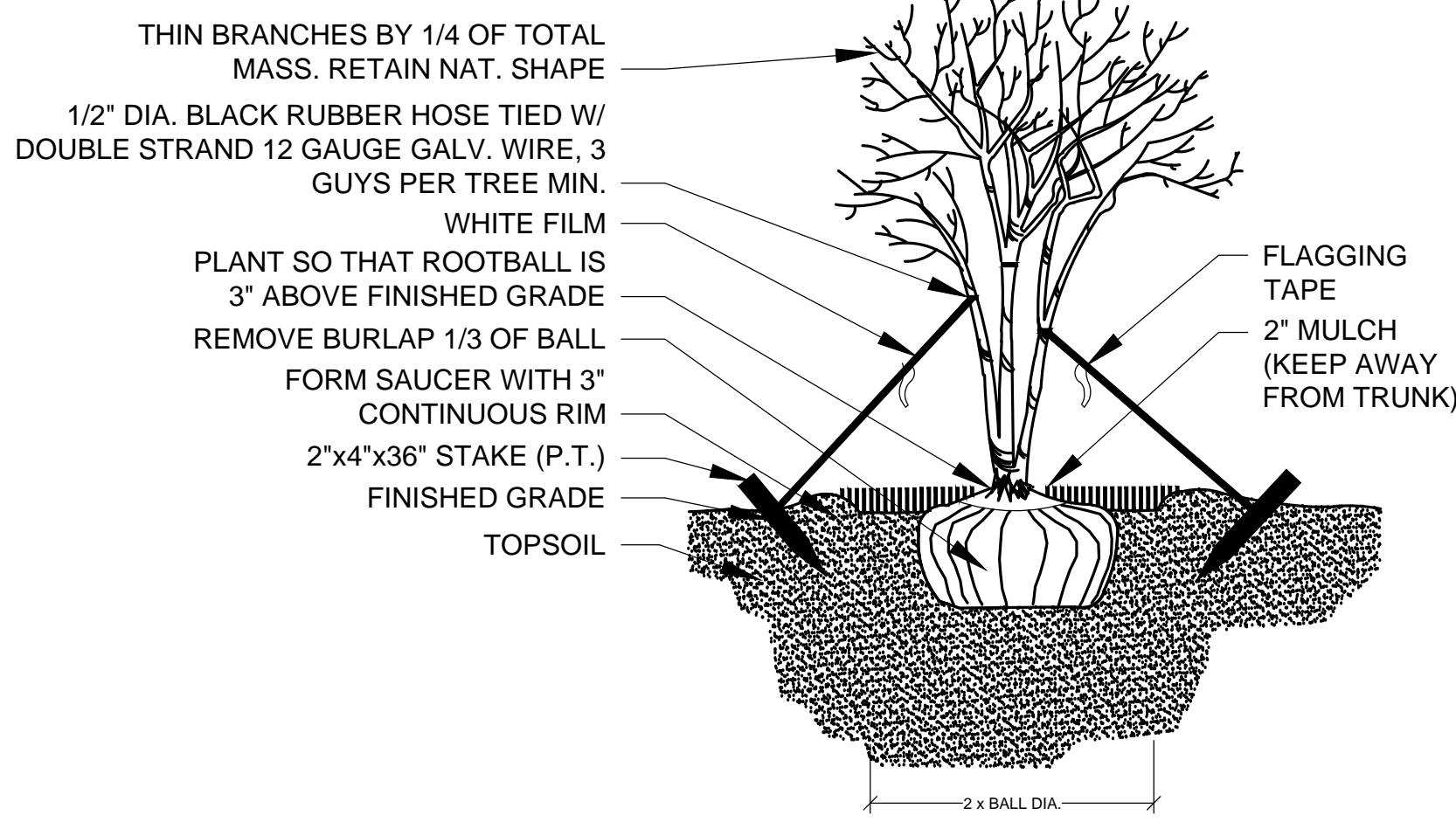
NOT TO SCALE



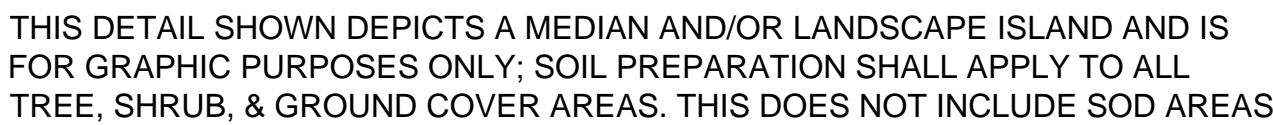
2x4x36" STAKE (P.T.)
TOPSOIL



NOT TO SCALE



NOT TO SCALE



NOT TO SCALE

- * TOPSOIL SHALL BE NATURAL, FRABLE, FINE LOAMY SOIL POSSESSING CHARACTERISTICS OF REPRESENTATIVE TOPSOIL IN THE VICINITY OF THE PROJECT SITE THAT PRODUCES HEAVY GROWTH.
TOPSOIL SHALL HAVE A PH RANGE OF 5.5-7.4, FREE FROM SUBSOIL, WEEDS, LITTER, SODS, CLAY, STONES, STUMPS, ROOTS, TRASH, HERBICIDES, TOXIC SUBSTANCES, OR ANY OTHER MATERIAL WHICH MAY BE HARMFUL TO PLANT GROWTH, OR HINDER PLANTING OPERATIONS.
TOPSOIL SHALL CONTAIN A MINIMUM OF 3% ORGANIC MATERIAL.
TOPSOIL MUST PERCOLATE WATER AT A RATE OF 1" PER HOUR (SEE ALSO DRAINAGE TESTING DETAIL FOR TREES)
LANDSCAPE AREA SOILS SHALL BE APPROVED BY LANDSCAPE ARCHITECT/OWNER PRIOR TO PLANTING



NOT TO SCALE



- 1- ROOT BARRIER SHALL BE BIO-BARRIER 24" DEPTH OR APPROVED EQUAL.
- 2- ROOT BARRIER SHALL BE INSTALLED PER MANUFACTURER'S SPECIFICATIONS AND RECOMMENDATIONS.
- 3- IF REQUIRED BY A MUNICIPALITY AND IN INSTANCES WHERE A TREE(S) IS PLANTED CLOSER THAN FIVE (5') FROM A SIDEWALK OR STRUCTURE, A ROOT BARRIER(S) SHALL BE INSTALLED. ROOT BARRIERS FOR TREES SHALL BE INSTALLED ALONG THE EDGE OF THE STRUCTURE, PAVING OR CURB. THE ROOT BARRIER SHALL BE INSTALLED WITH 20 LF CENTERED FROM THE TRUNK FOR LARGE TREES AND 15 LF FOR SMALL TREES.



DRAINAGE TESTING/DRAINAGE CHANNEL REQUIREMENTS.

- A. DIG EACH PLANTING PIT TO THE MINIMUM SPECIFIED SIZE.
- B. FILL PLANTING PIT WITH TWELVE INCHES (12") OF WATER. IF THE WATER LEVEL DROPS FOUR (4") OR MORE WITHIN FOUR (4) HOURS, THE DRAINAGE IS SUFFICIENT AND A DRAINAGE CHANNEL IS NOT REQUIRED. IF THE WATER LEVEL DROPS LESS THAN FOUR INCHES (4") WITHIN THE FOUR (4) HOUR PERIOD DRAINAGE CHANNEL IS REQUIRED.
- C. WHERE REQUIRED, THE DRAINAGE CHANNEL MUST EXTEND DOWN THROUGH THE NON POROUS SOIL AND INTO POROUS SOIL. (SEE DETAIL)
- D. ALL MATERIAL REMOVED FROM THE DRAINAGE CHANNEL SHALL BE DISCARDED.
- E. WHEN BACKFILLING PLANTING PITS WITH NATIVE TOPSOIL, CARE MUST BE TAKEN TO KEEP THE CONSISTENCY OF THE SOIL MIX THE SAME THROUGHOUT THE PLANTING PIT AND DRAINAGE CHANNEL.

