

Symbols Legend

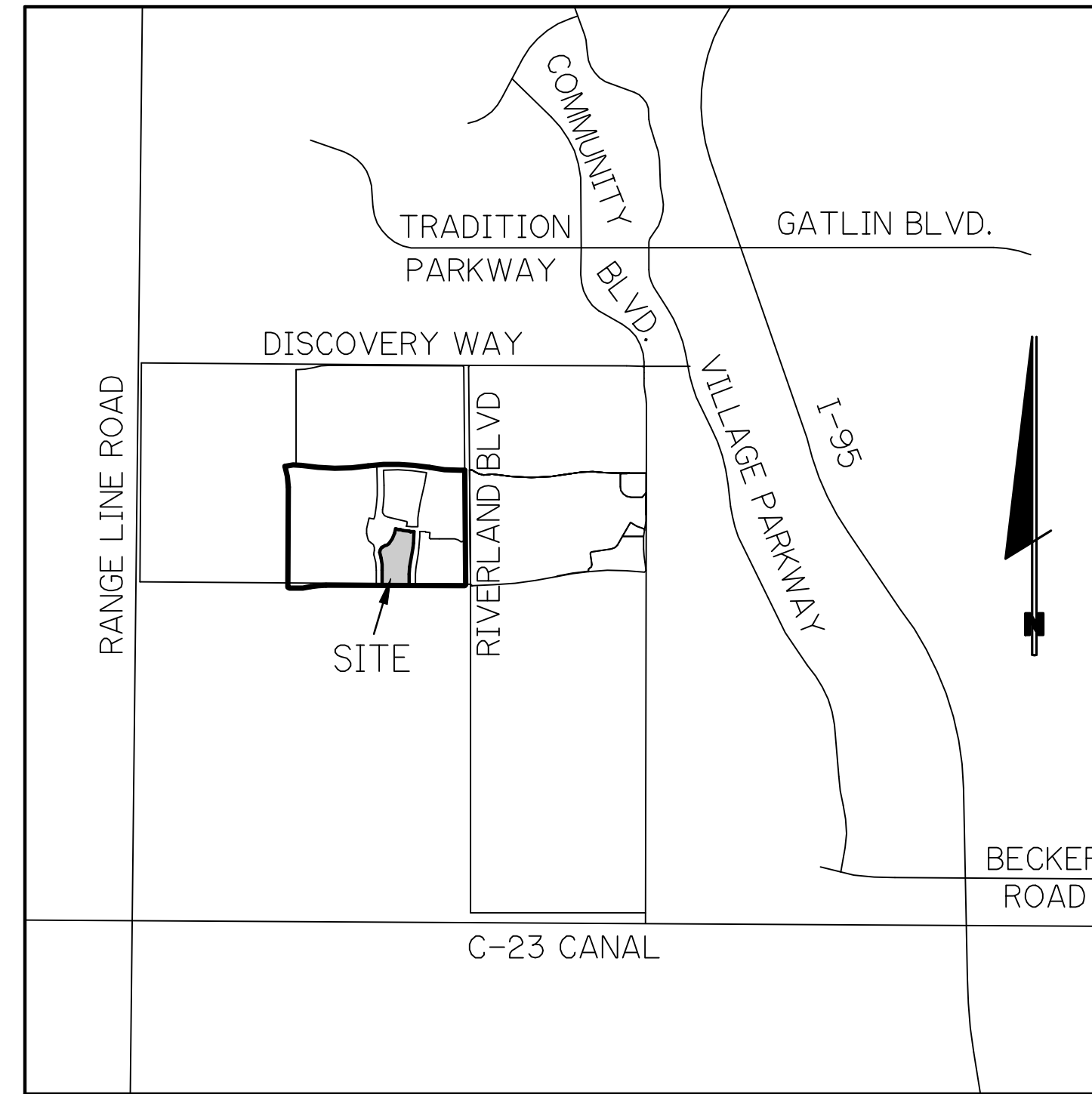
D.E.	DRAINAGE EASEMENT	O.E.	OVERHANG EASEMENT
L.M.E.	LAKE MAINTENANCE EASEMENT	G.E.	GRADING EASEMENT
L.M.A.E.	LAKE MAINTENANCE ACCESS EASEMENT	PSL	PORT ST LUCIE
R.O.W.	RIGHT OF WAY	L.E.	LANDSCAPE EASEMENT
U.E.	UTILITY EASEMENT	D.S.E.	DRAINAGE SWALE EASEMENT
U.E.-R.A.	UTILITY EASEMENT - RESTRICTED AREA (SEE "U.E." PLAT DEDICATION)	O.S.	OPEN SPACE
STM	STORM SEWER LINE WITH MANHOLE	S&M	SEED & MULCH
STM	STORM SEWER LINE WITH CATCH BASIN	●	SIGN
SAN	SANITARY SEWER LINE WITH MANHOLE	①	LOT NUMBER
WM	WATER MAIN	⊕	FIRE HYDRANT
⊕	WATER SVC. TO LOT WITH METER W.M.		
⊕	SANITARY SVC. TO LOT WITH CLEANOUT C.O.		

PSLUD Notes:

- LANDSCAPE PLANS SHALL BE SUBMITTED FOR THE PROJECT INDICATING THE LOCATION OF LANDSCAPE AREAS, PERIMETER WALLS, FOUNDATIONS, BERMS, TREE WELLS, FENCES, GATES, SIGNS, DECORATIVE ROCKS, SCULPTURE, FOUNTAINS, AND ANY OTHER FEATURES THAT MAY INFLUENCE THE LOCATION OF WATER / WASTEWATER / RECLAIMED WATER FACILITIES. ALSO EXISTING AND PROPOSED WATER / WASTEWATER / RECLAIMED FACILITIES, AND RIGHT-OF-WAY, LOT LINES AND EASEMENTS. THE PLANS SHALL INCLUDE AND CONFORM TO THE FOLLOWING STANDARD NOTES:
- NO LANDSCAPING SHALL BE PLANTED IN A MANNER THAT WOULD ADVERSELY AFFECT UTILITY EASEMENTS. LANDSCAPING SHALL BE IN COMPLIANCE WITH CHAPTER 84 OF THE CITY OF PORT ST. LUCIE CODE OF ORDINANCES, PSLUD TECHNICAL SPECIFICATIONS AND POLICIES.
 - ALL LANDSCAPING WITHIN CITY UTILITY EASEMENTS SHALL COMPLY WITH CHAPTER 84 OF THE CITY'S CODE OF ORDINANCES AND PSLUD TECHNICAL SPECIFICATIONS, POLICIES, AND CODES.
 - ALL LANDSCAPING SHALL MEET THE LATEST PSLUD LANDSCAPE POLICY AND SHALL NOT BE PLACED IN A MANNER THAT WOULD CREATE CONFLICTS WITH THE INTENDED OPERATION AND MAINTENANCE OF ANY EXISTING UTILITY.
 - WITH THE EXCEPTION OF FOXTAIL PALMS, TREES SHALL NOT BE PLANTED WITHIN 10' OF ANY PSLUD INFRASTRUCTURE. AS SPECIFICALLY APPROVED BY THE PSLUD, FOXTAIL PALMS MAY BE A DISTANCE NOT LESS THAN SEVEN (7) FEET OF ANY PSLUD INFRASTRUCTURE. ALL REQUIREMENTS ARE FROM OUTSIDE TO OUTSIDE, NOT CENTERLINE TO CENTERLINE. EXAMPLE: OUTSIDE OF PIPE TO NEAREST POINT ON TREE TRUNK.
 - NO LANDSCAPING OTHER THAN SOO GRASSES SHALL BE LOCATED WITHIN 5' OF A PSLUD APPURTENANCE SUCH AS A WATER METER ASSEMBLY, BACK-FLOW DEVICE, FIRE HYDRANT OR SEWER CLEANOUT, ETC.
- UTILITY / DRAINAGE EASEMENTS TO REMAIN CLEAR OF TREES UNLESS OTHERWISE APPROVED BY THE EASEMENT HOLDER.

RIVERLAND - PARCEL 'D'

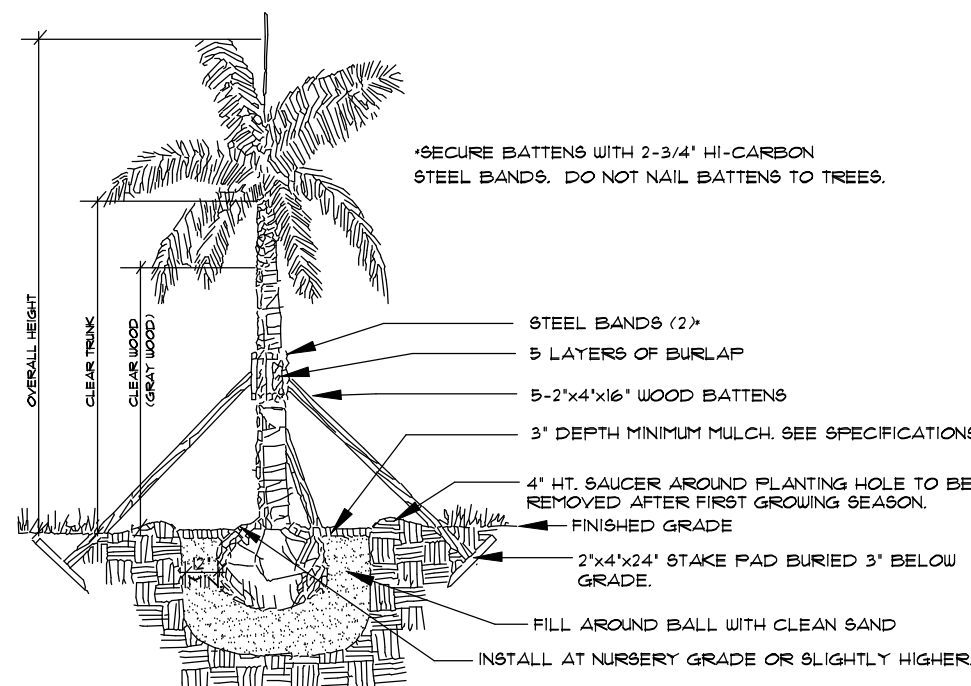
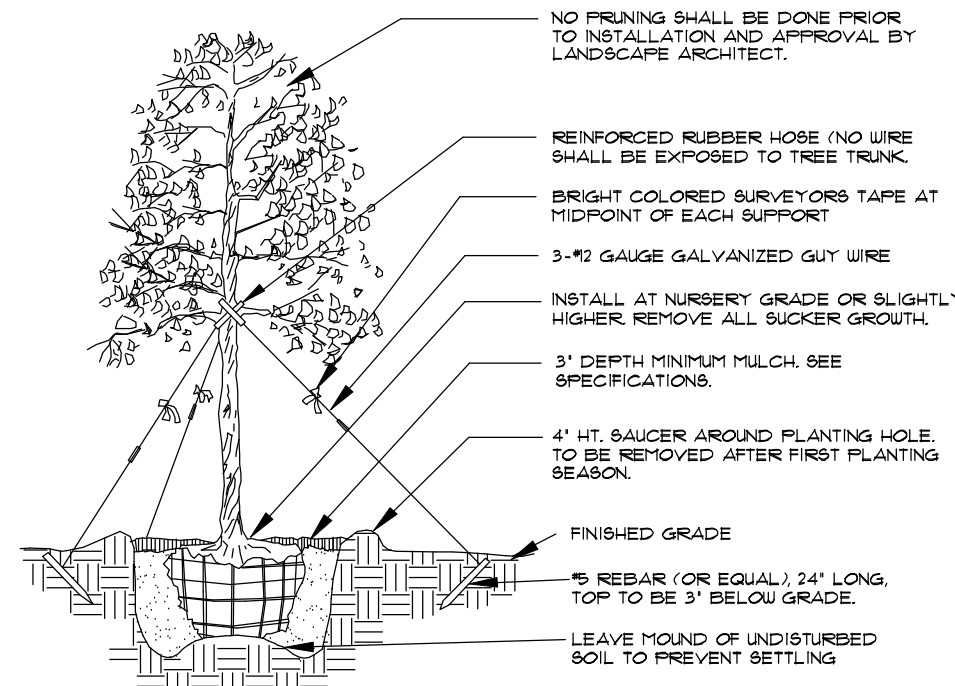
(RIVERLAND MPUD) PLANTING PLANS PLAT FOUR



LOCATION MAP

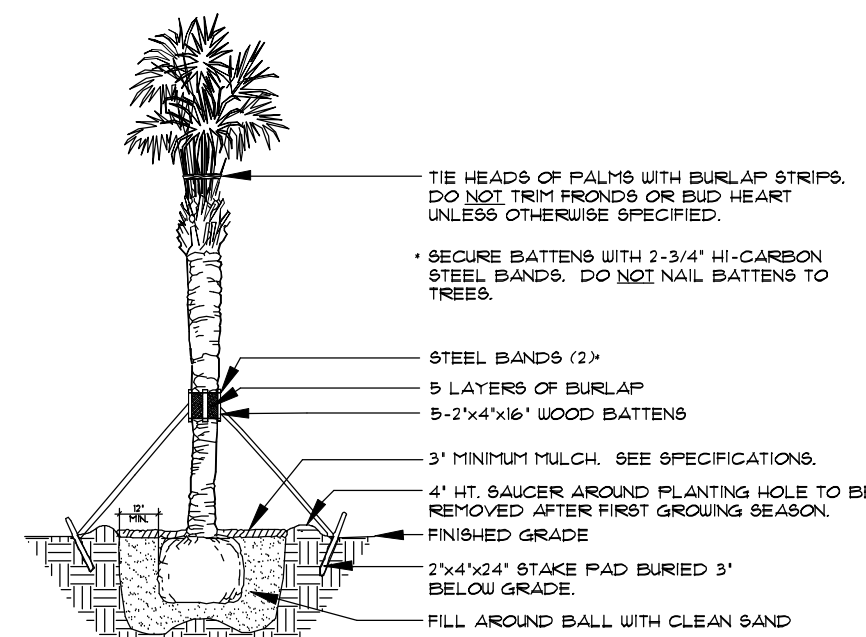
N.T.S.
SEC. 21 TWP. 37S RGE. 39E

Planting Details



Tree Planting

- SEE SPECIFICATIONS FOR BACKFILL MIXTURE AND FERTILIZATION.
- BRACING - SPECIAL SITE CONDITIONS MAY REQUIRE MODIFICATION TO BRACING TECHNIQUE. LANDSCAPE CONTRACTOR WILL ADEQUATELY BRACE (OR WIRE) ALL TREES TO PREVENT EXCESSIVE MOVEMENT & MAINTAIN A VERTICAL POSITION.

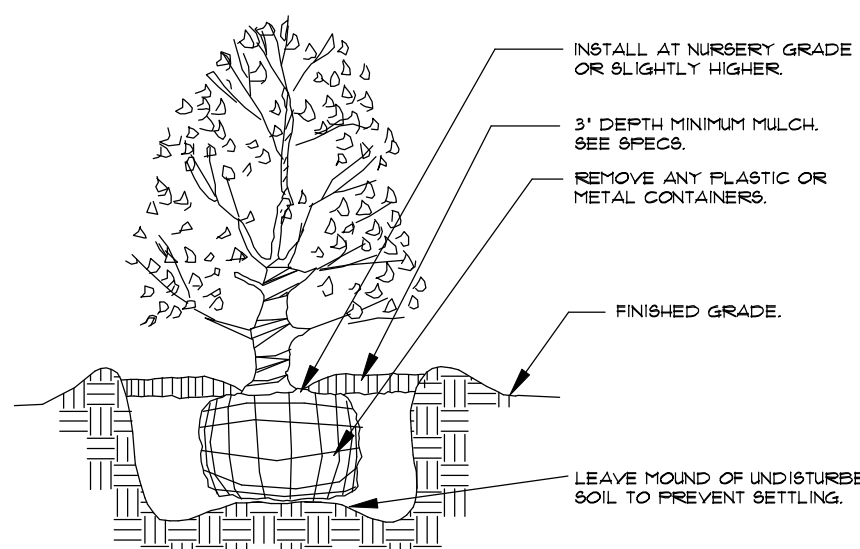


Palm Planting

- APPLIES TO: SABAL PALMS, WASHINGTON PALMS, CANARY ISLAND DATE PALMS, BENIGAL DATE PALMS
- SEE SPECIFICATIONS FOR BACKFILL MIXTURE AND FERTILIZATION.

Palm Planting

- APPLIES TO: ROYAL PALMS, QUEEN PALMS, ALEXANDER PALMS, FOXTAIL PALMS
- SEE SPECIFICATIONS FOR BACKFILL MIXTURE AND FERTILIZATION.
- BRACING - SPECIAL SITE CONDITIONS MAY REQUIRE MODIFICATION TO BRACING TECHNIQUE. LANDSCAPE CONTRACTOR WILL ADEQUATELY BRACE ALL PALMS TO PREVENT EXCESSIVE MOVEMENT & MAINTAIN A VERTICAL POSITION.



Shrub Planting

- SEE SPECIFICATIONS FOR BACKFILL MIXTURE AND FERTILIZATION.

Sheet Index

- P4-1 - Cover Sheet, Index, General Notes
- P4-2 thru P4-6 Plat Four Planting Plans

Plant Specifications

SPECIES AND SIZE shall conform to those indicated on the drawings. Nomenclature shall conform to STANDARDIZED PLANT NAMES, current edition. All nursery stock shall be in accordance with Florida Grades and Standards for Nursery Plants, latest edition published by the Florida Department of Agriculture and Consumer Services. All plants not otherwise specified as being Florida Fancy or Specimen shall be Florida Grade Number 1 or better as determined by the Florida Division of Plant Industry. Specimen means an exceptionally heavy, symmetrical, tightly knit plant, so trained or favored in its development that first appearance is unquestionable and outstandingly superior in form, number of branches, compactness and symmetry.

GENERAL REQUIREMENTS

All plants shall be freshly dug, sound, healthy, vigorous, well branched, and free of disease and insect eggs and larvae, and shall have adequate root systems. Trees for planting rows shall be uniform in size and shape. All materials shall be subject to approval by the Landscape Architect. Where any requirements are omitted from the plant list, the plants furnished shall be normal for the variety. Plants shall be graded prior to delivery only upon the approval of the Landscape Architect.

CONTAINER GROWN STOCK

All container grown material shall be healthy, vigorous, well rooted plants, and established in the container in which they are sold. The plants shall have tops which are good quality and in a healthy growing condition. An established container grown plant shall be grown in that container sufficiently long enough for the new fibrous roots to have developed so that the root mass will retain its shape and hold together when removed from the container. Plant root bound in containers are unacceptable.

MEASUREMENTS

- Trees:** Height shall be measured from ground to the top most portion of the tree. Small, multi-trunked trees are measured to the top of main body of the crown. Spread shall be measured to the end of branching equally around the crown from the center of the trunk. Measurements are not to include any terminal growth. Single trunk trees shall be free of "Y" crotches that could be points of weak limb structure or disease infestation.
- Shrubs:** Heights shall be measured from the ground to the average points where mature plant growth stops. Spread shall be measured to the end of branching equally around the shrub mass. Measurements are not to include any terminal growth.
- Palms:** Clear Trunk (C.T.) shall be measured from the ground at the time of installation to the point where the mature aged trunk joins the immature or green portion of the trunk or the head. Overall height (O.H.) shall be measured from the ground at the time of installation to a point three quarters the length of the unopened bud. Palms with marred or burned trunks will not be accepted.

SOIL

Planting soil for use in preparing backfill for plant pits shall be free from heavy clay, stones, lime plants, roots or other foreign materials or noxious grasses (such as Bermuda or nut grass) and noxious weeds. It shall not contain toxic substances which may be harmful to plant growth.

COMMERCIAL FERTILIZER

Two fertilizer shall be used in all types of plantings, except palms. Granular fertilizer shall be uniform in composition, dry and free flowing. This fertilizer shall be delivered to the site in the original unopened bags, each bearing the manufacturer's statement of analysis, and shall meet the following requirements: sixteen (16%) percent nitrogen, seven (7%) percent phosphorus, twelve (12%) percent potassium, plus iron. Tablet fertilizer ("Agriform" or equal) in 21 gram size shall meet the following requirements: twenty (20%) percent nitrogen, ten (10%) percent phosphorus, five (5%) percent potassium.

The two fertilizers will be applied at the following rates:

PLANT SIZE	16-1-12	"AGRIFORM" TABLET (21 Grams)
1 gal.	1/4 lb.	1
3 gal.	1/3 lb.	2
1-1/2 gal.	1/2 lb.	4
1"-6" caliper	2 lbs./1" caliper	2 1/2" caliper
6" and larger	3 lbs./1" caliper	2 1/2" caliper

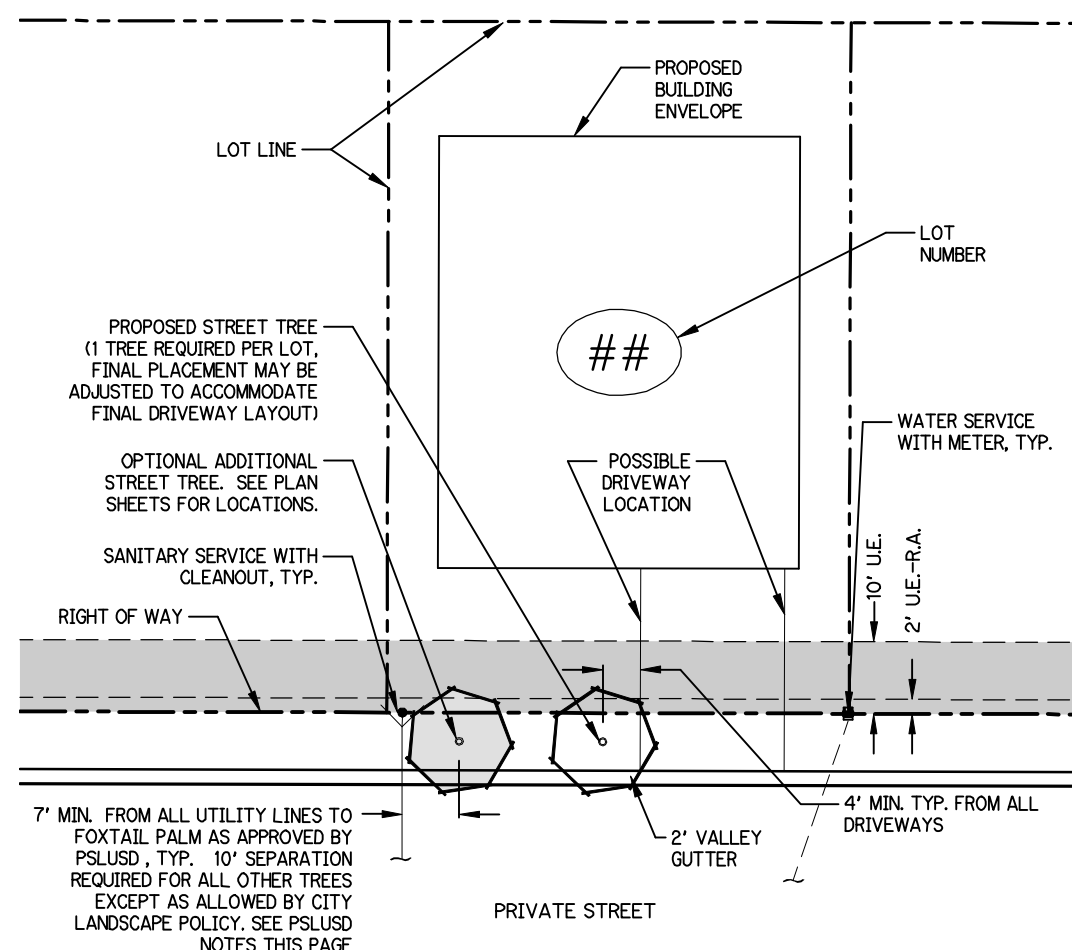
"Florida East Coast Palm Special" will be applied to all palms at installation at a rate of 1/2 lb. per inch of trunk caliper unless otherwise specified.

MULCH

Mulch material shall be two (2) inches of shredded Glass 'A' mulch (sterilized and free of seeds), installed at the time of application to prevent wind displacement. See plant list for specification.

SUBSTITUTIONS

No substitutions of plant material types or size will be allowed without written consent of the Landscape Architect. B&B material will not be accepted as substitute for container grown material unless previously approved. Alternate substitutions shall be indicated in bid.

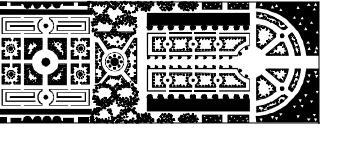


Typical Lot Layout Detail

NTA

PSLUSD # 5268D

PSL PROJECT NO. 22-288



PARKER-YANNETTE
design group, inc.

LANDSCAPE ARCHITECTURE
PLANNING • GRAPHICS
825 South U.S. Highway One
Suite 330
Jupiter, Florida 33477

Telephone: (561) 747-5069
Fax: (561) 747-2041
Email: mail@pydg.com

License #LC-0000297

RIVERLAND - PARCEL 'D' - PLAT 4

Developer: Riverland Associates IV, LLLP
PORT ST. LUCIE, FLORIDA

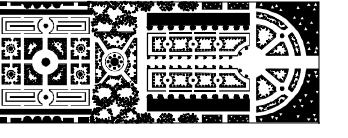
COVER SHEET

DATE: 10/18/19
DRAWN BY: AJO/TY
JOB NO.: 19-095
SCALE: N/A
FILENAME: RLD STP 01

REVISIONS:
12/16/22 PSL cmrta / new utility
5/26/23 PSL cmrta
1/31/23 PSL cmrta

SHEET:

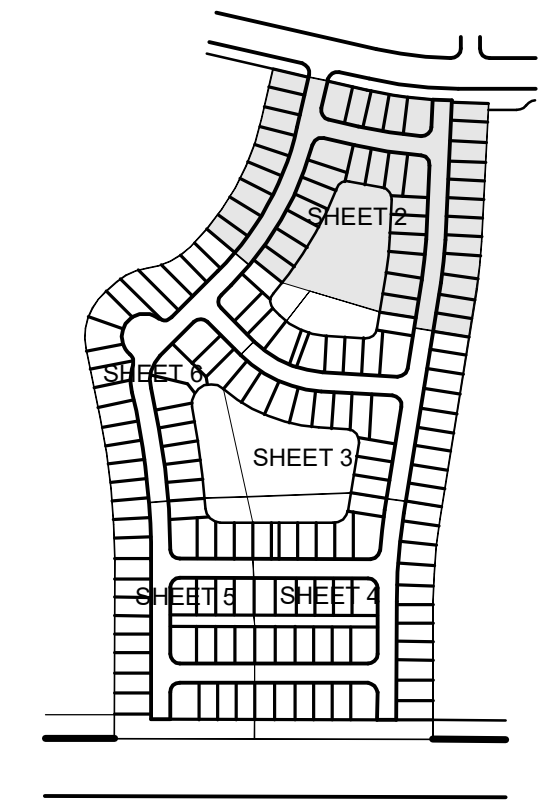
P4-1



PARKER-YANNETTE
design group, inc.

LANDSCAPE ARCHITECTURE
PLANNING • GRAPHICS
825 South U.S. Highway One
Suite 330
Jupiter, Florida 33477

Telephone: (561) 747-5069
Fax: (561) 747-2041
Email: mail@pydg.com
License #LC-0000297

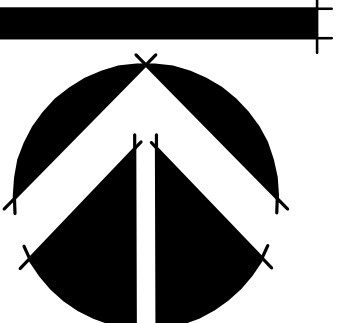


KEY MAP

RIVERLAND - PARCEL 'D' - PLAT 4
Developer: Riverland Associates IV, LLLP
PORT ST. LUCIE, FLORIDA
PLANTING PLAN

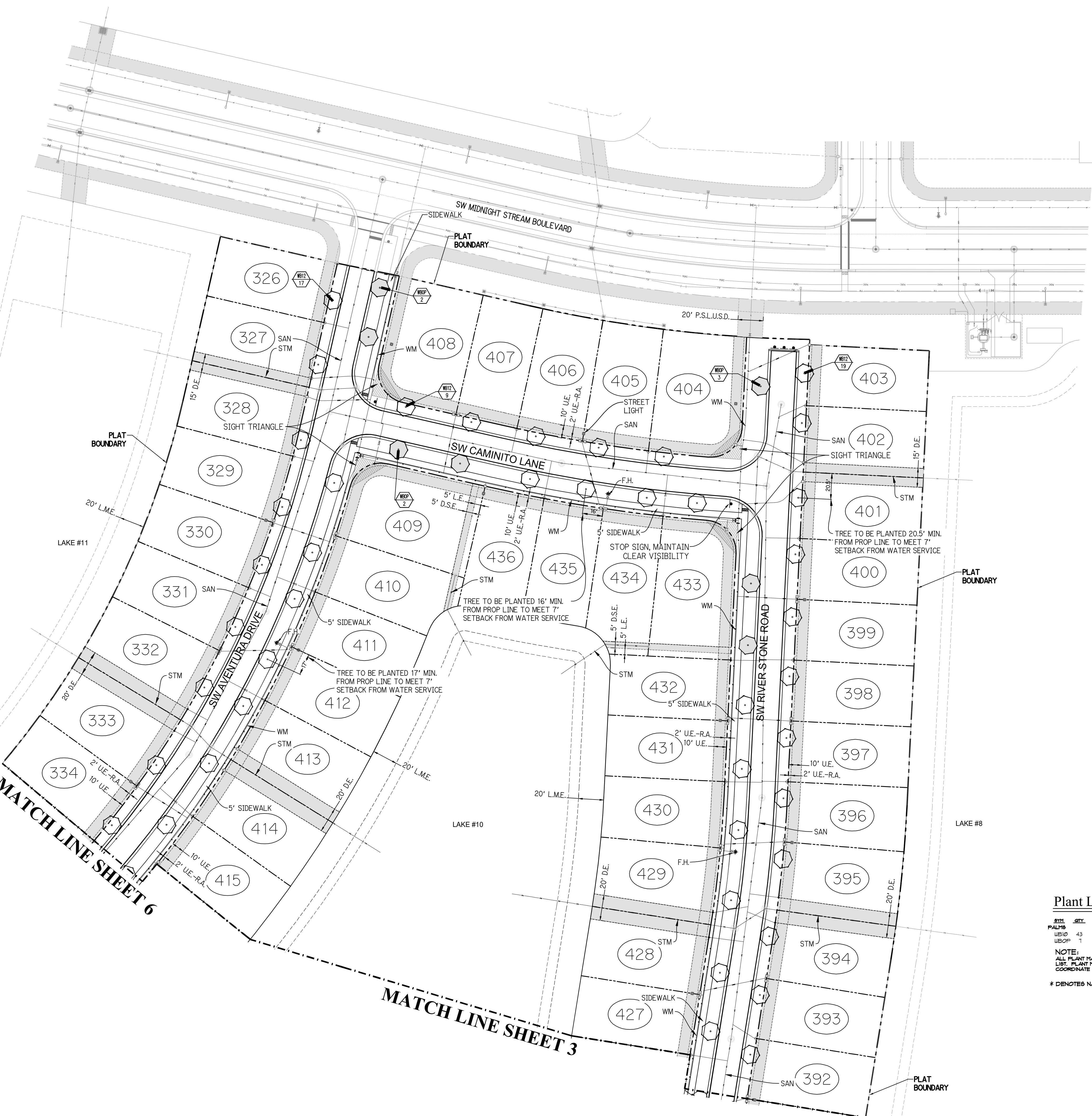
DATE: 10/18/19
DRAWN BY: AJO/ITY
JOB NO.: 19-095
SCALE: 1" = 40'-0"
FILENAME: RI D STP 01

REVISIONS:
12/16/22 PSL cmnts / new utility
5/26/23 PSL cmnts
1/31/23 PSL cmnts



SHEET:

P4-2



Plant List (Sheet P4-2 Only)

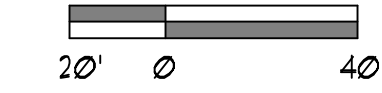
SYM	QTY	NAME	SPECIFICATIONS
UB10	43	Wodyetia bifurcata / Foxtail Palm	10' c.t., 4" min. cal. crown shaft, straight trunk, full head, unscarred trunk, intact fronds
UBOP	T	Optional Additional Street Tree - Wodyetia bifurcata / Foxtail Palm	10' c.t., 4" min. cal. crown shaft, straight trunk, full head, unscarred trunk, intact fronds

NOTE:
ALL PLANT MATERIAL SHALL MEET OR EXCEED SIZE AND CONTAINER SPECIFICATIONS IN PLANT LIST. PLANT MATERIALS NOT MEETING SPECIFICATIONS WILL BE REJECTED. CONTRACTOR TO COORDINATE AVAILABILITY ISSUES WITH OWNER PRIOR TO COMMENCING WORK.

* DENOTES NATIVE SPECIES

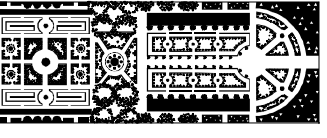
Symbols Legend

D.E.	DRAINAGE EASEMENT	O.E.	OVERHANG EASEMENT
L.M.E.	LAKE MAINTENANCE EASEMENT	G.E.	GRADING EASEMENT
L.M.A.E.	LAKE MAINTENANCE ACCESS EASEMENT	PSL	PORT ST LUCIE
R.O.W.	RIGHT OF WAY	L.E.	LANDSCAPE EASEMENT
U.E.	UTILITY EASEMENT	D.S.E.	DRAINAGE SWALE EASEMENT
U.E.-R.A.	UTILITY EASEMENT - RESTRICTED AREA	O.S.	OPEN SPACE
SEE "U.E.-PLAT DEDICATION"		SM	SEED & MULCH
STM	STORM SEWER LINE WITH MANHOLE	SM	SOIL
STM	STORM SEWER LINE WITH GATOR BASIN	LN	LOT NUMBER
SAN	SANITARY SEWER LINE WITH MANHOLE	FW	FIRE HYDRANT
WM	WATER MAIN		
W	WATER SVC. TO LOT WITH METER		
W	WATER SVC. TO LOT WITH CLEANOUT		
G.O.			



PSLUSD # 5268D

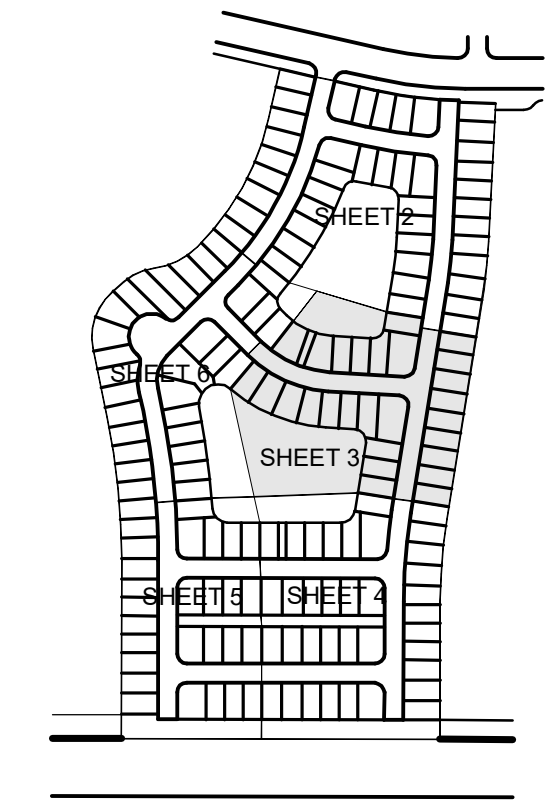
PSL PROJECT NO. 22-288



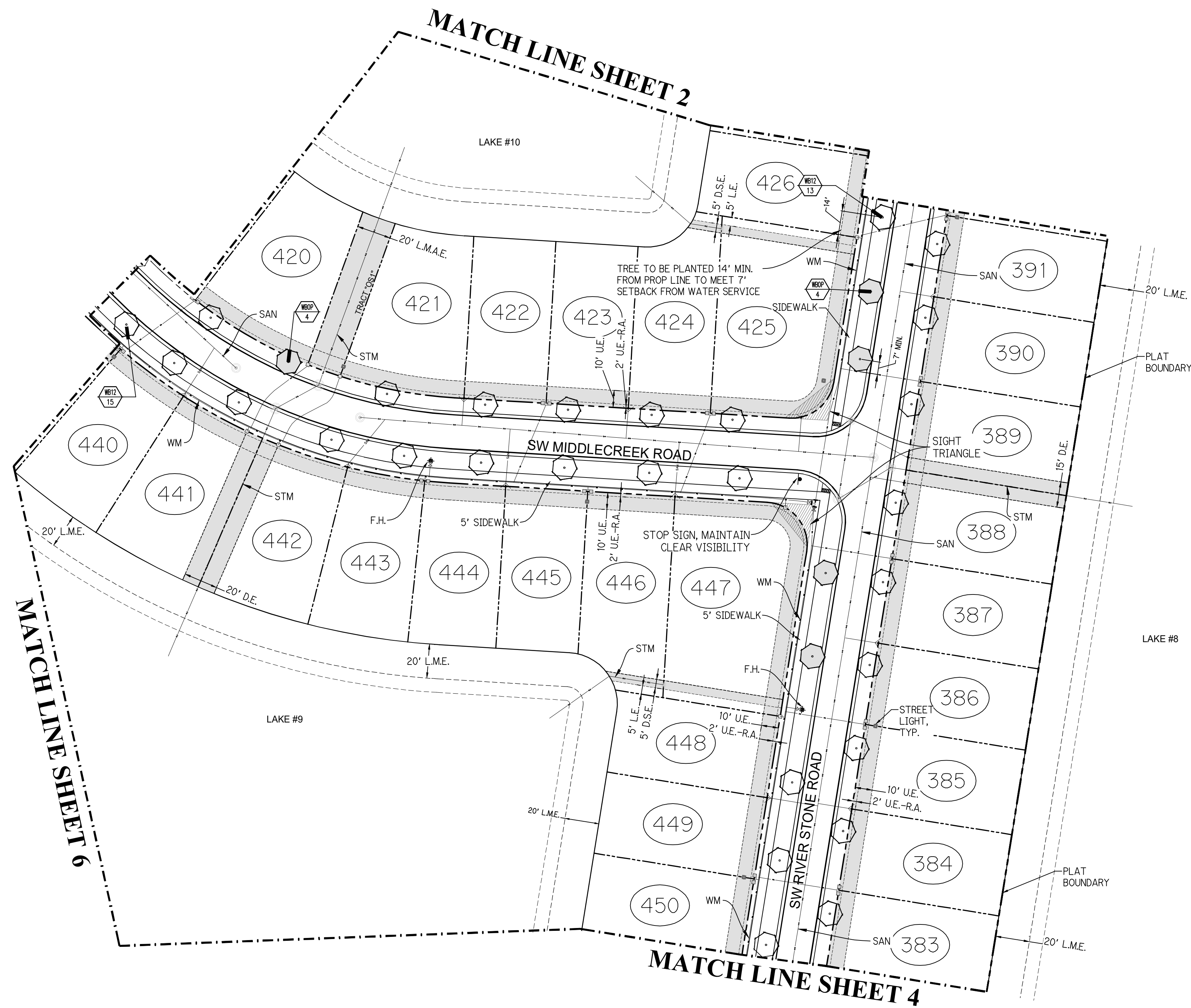
PARKER-YANNETTE
design group, inc.

LANDSCAPE ARCHITECTURE
PLANNING • GRAPHICS
825 South U.S. Highway One
Suite 330
Jupiter, Florida 33477

Telephone: (561) 747-5069
Fax: (561) 747-2041
Email: mail@pydg.com
License #LC-0000297



KEY MAP



RIVERLAND - PARCEL 'D' - PLAT 4
Developer: Riverland Associates IV, LLLP
PORT ST. LUCIE, FLORIDA
PLANTING PLAN

DATE: 10/18/19
DRAWN BY: AJO/TY
JOB NO.: 19-095
SCALE: 1" = 40'-0"
FILENAME: RI D STP 01

REVISIONS:
12/16/22 PSL cmts / new utils
5/26/23 PSL cmts
1/31/23 PSL cmts

Plant List (Sheet P4-3 Only)

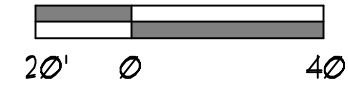
SYM	QTY	NAME	SPECIFICATIONS
PALM16	28	Wodyetia bifurcata / Foxtail Palm	10' c.l. 4" min. cal. crown shaft, straight trunk, full head, unscarred trunk, intact fronds
UBOP	5	Optional Additional Street Tree - Wodyetia bifurcata / Foxtail Palm	10' c.l. 4" min. cal. crown shaft, straight trunk, full head, unscarred trunk, intact fronds

NOTE:
ALL PLANT MATERIAL SHALL MEET OR EXCEED SIZE AND CONTAINER SPECIFICATIONS IN PLANT LIST. PLANT MATERIALS NOT MEETING SPECIFICATIONS WILL BE REJECTED. CONTRACTOR TO COORDINATE AVAILABILITY ISSUES WITH OWNER PRIOR TO COMMENCING WORK.

* DENOTES NATIVE SPECIES

Symbols Legend

D.E.	DRAINAGE EASEMENT	O.E.	OVERHANG EASEMENT
L.M.E.	LAKE MAINTENANCE EASEMENT	G.E.	GRADING EASEMENT
L.M.A.E.	LAKE MAINTENANCE ACCESS EASEMENT	PSL	PORT ST LUCIE
R.O.W.	RIGHT OF WAY	L.E.	LANDSCAPE EASEMENT
U.E.	UTILITY EASEMENT	D.S.E.	DRAINAGE SWALE EASEMENT
U.E.-R.A.	UTILITY EASEMENT - RESTRICTED AREA (SEE "U.E.-PLAT DEDICATION")	O.S.	OPEN SPACE
STM	STORM SEWER LINE WITH MANHOLE	SS&M	SEED & MULCH
STM	STORM SEWER LINE WITH CATCH BASIN	SN	SIGN
SAN	SANITARY SEWER LINE WITH MANHOLE	1	LOT NUMBER
WM	WATER MAIN	⚡	FIRE HYDRANT
WS	WATER SVC. TO LOT WITH METER		
WS	WATER SVC. TO LOT WITH CLEARDOT		
WS	WATER SVC. TO LOT WITH CLEARDOT		

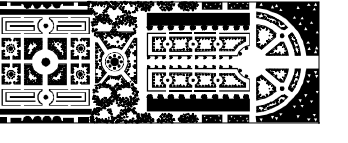


P&LUSD # 5268D

P&L PROJECT NO. 22-288

SHEET:

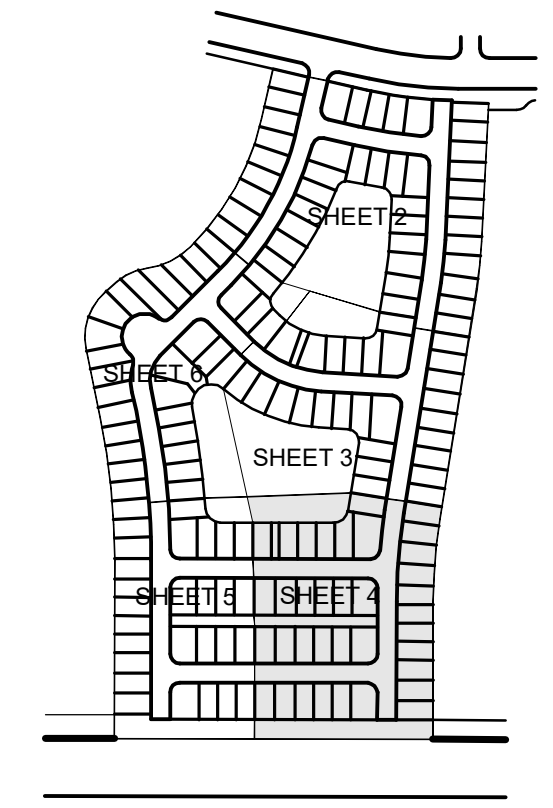
P4-3



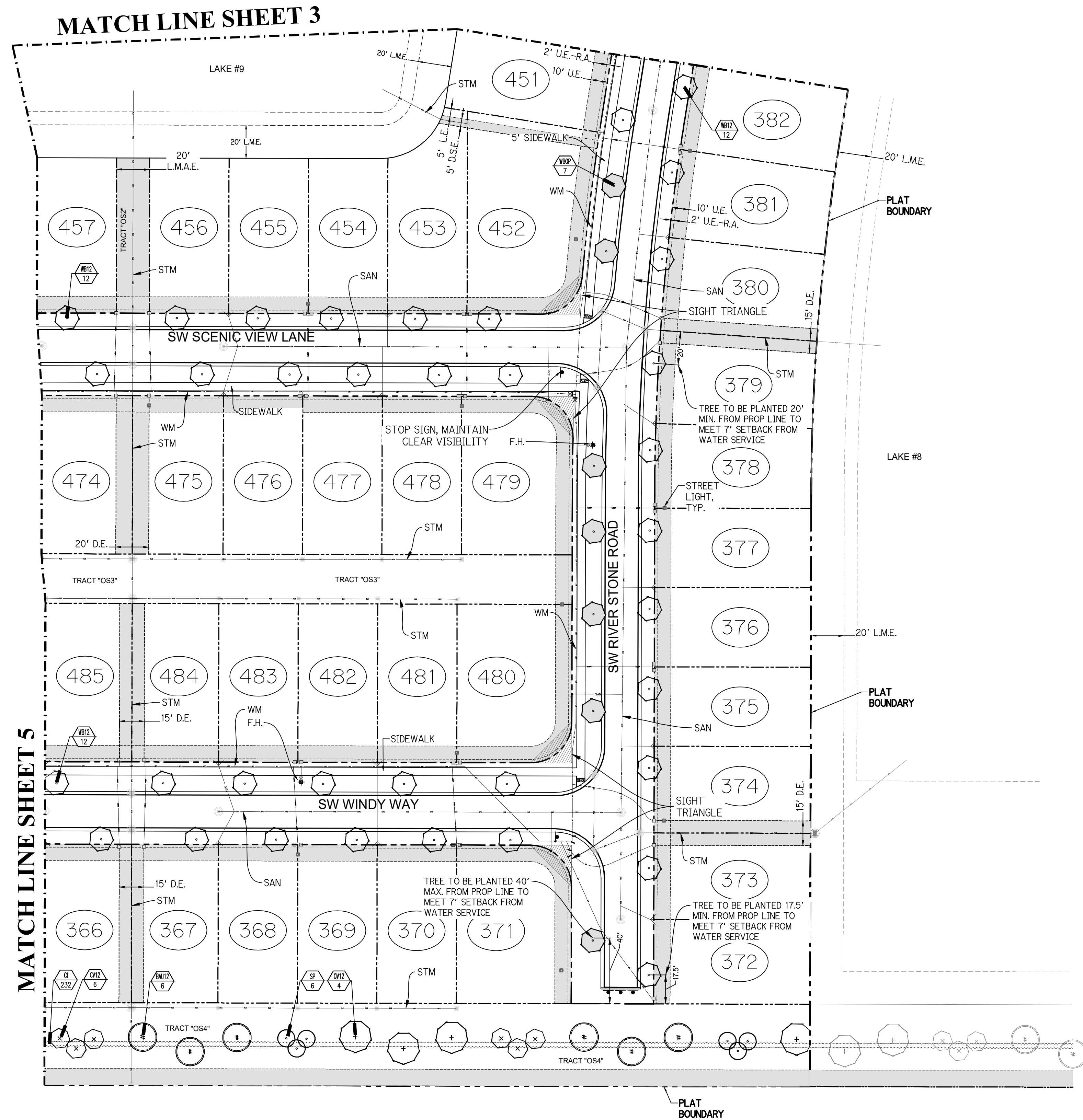
PARKER-YANNETTE
design group, inc.

LANDSCAPE ARCHITECTURE
PLANNING • GRAPHICS
825 South U.S. Highway One
Suite 330
Jupiter, Florida 33477

Telephone: (561) 747-5069
Fax: (561) 747-2041
Email: mail@pydg.com
License #LC-0000297



KEY MAP



MATCH LINE SHEET 5

MATCH LINE SHEET 3

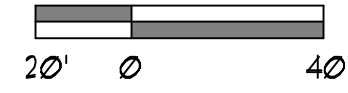
Plant List (Sheet P4-4 Only)

SYM.	QTY.	NAME	SPECIFICATIONS
TREES			
BAU12	6	Bauhinia blakeana / Hong Kong Orchid	12' x 5' 25" cal, 5' c.t., straight trunk, full canopy
CV12	6	Callistemon viminalis / Weeping Bottlebrush	12' H, full canopy
* QV12	4	Quercus virginiana / Live Oak	12' x 6' 25" cal, straight trunk, full canopy
PALMS			
* SP	6	Sabal palmetto / Cabbage Palm	10' - 22' c.t. Hts., staggered Hts., hurricane cut, straight trunk, slick
WE10	36	Wodyetia bifurcata / Foxtail Palm	10' c.t., 4" min. cal. crown shaft, straight trunk, full head, unscarred trunk, intact fronds
WEOP	1	Optional Additional Street Tree - Wodyetia bifurcata / Foxtail Palm	10' c.t., 4" min. cal. crown shaft, straight trunk, full head, unscarred trunk, intact fronds
SHRUBS, ACCENTS, AND GROUNDCOVER			
CI	232	Chrysobalanus icaco / Cocoplum	3 gal, 20" x 20", full to base

NOTE:
ALL PLANT MATERIAL SHALL MEET OR EXCEED SIZE AND CONTAINER SPECIFICATIONS IN PLANT LIST. PLANT MATERIALS NOT MEETING SPECIFICATIONS WILL BE REJECTED. CONTRACTOR TO COORDINATE AVAILABILITY ISSUES WITH OWNER PRIOR TO COMMENCING WORK.
* DENOTES NATIVE SPECIES

Symbols Legend

D.E.	DRAINAGE EASEMENT	O.E.	OVERHANG EASEMENT
L.M.E.	LINE MAINTENANCE EASEMENT	G.E.	GRADING EASEMENT
L.M.A.E.	LINE MAINTENANCE ACCESS EASEMENT	P.S.L.	PORT ST. LANE
R.O.W.	RIGHT OF WAY	P.L.	LANDSCAPE EASEMENT
U.E.	UTILITY EASEMENT	D.S.E.	DRAINAGE SWALE EASEMENT
U.E.-R.A.	UTILITY EASEMENT - RESTRICTED AREA SEE "U.E." PLAT DESIGNATION	O.S.	OPEN SPACE
STM	STORM SEWER LINE WITH MANHOLE	S.M.	SEED & MULCH
STM _{MB}	STORM SEWER LINE WITH CATCH BASIN	SN	SNOW
SSM	SANITARY SEWER LINE WITH MANHOLE	1	LOT NUMBER
WM	WATER MAIN	+	FIRE HYDRANT
W	WATER SVC. TO LOT WITH METER		
W.C.	SANITARY SVC. TO LOT WITH CLEANOUT		

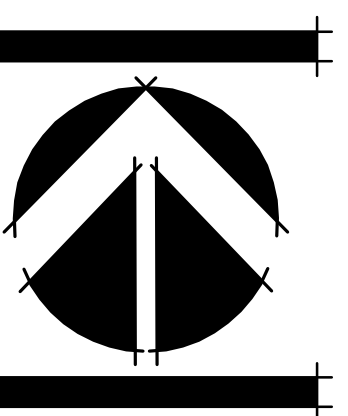


P&LUSD # 5268D P&L PROJECT NO. 22-288

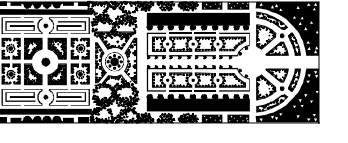
RIVERLAND - PARCEL 'D' - PLAT 4
 Developer: Riverland Associates IV, LLLP
 PORT ST. LUCIE, FLORIDA
 PLANTING PLAN

DATE: 10/18/19
DRAWN BY: AJO/ITY
JOB NO.: 19-095
SCALE: 1" = 40'-0"
FILENAME: RI D STP 01

REVISIONS:
12/16/22 P&L c.mts / new utility
5/26/23 P&L c.mts
1/31/23 P&L c.mts



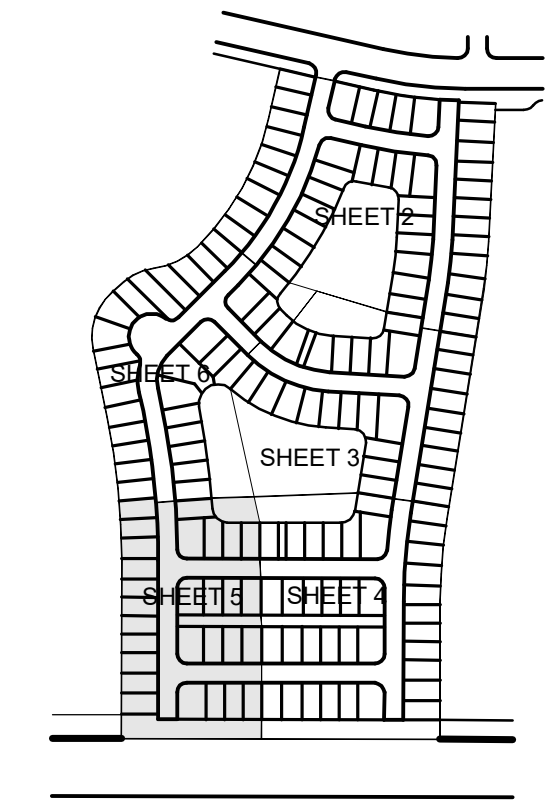
SHEET:
P4-4



PARKER-YANNETTE
design group, inc.

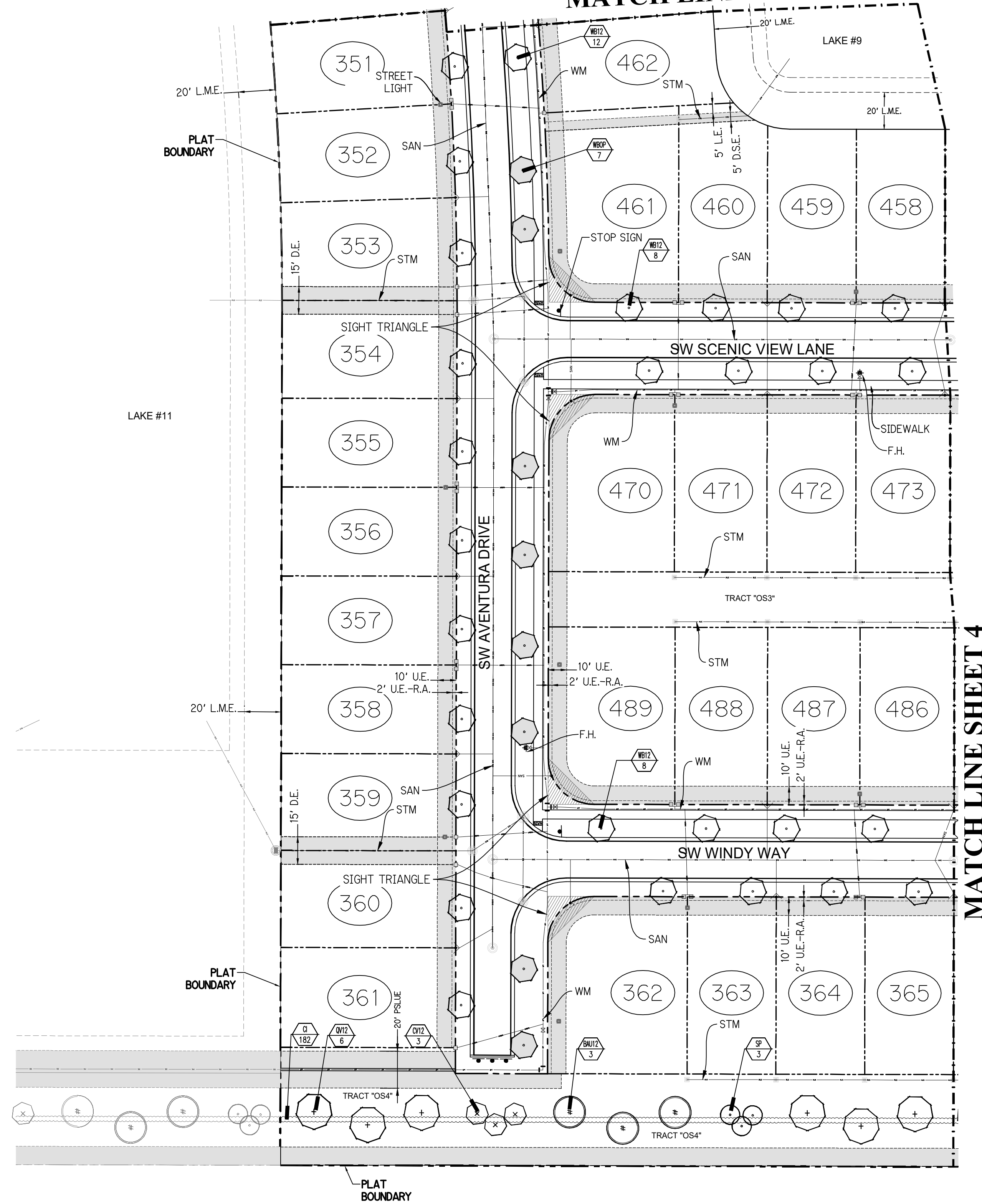
LANDSCAPE ARCHITECTURE
PLANNING • GRAPHICS
825 South U.S. Highway One
Suite 330
Jupiter, Florida 33477

Telephone: (561) 747-5069
Fax: (561) 747-2041
Email: mail@pydg.com
License #LC-0000297



KEY MAP

MATCH LINE SHEET 6



MATCH LINE SHEET 4

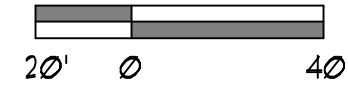
Plant List (Sheet P4-5 Only)

SYM	QTY	NAME	SPECIFICATIONS
TREES			
BAU0	3	Bauhinia blakeana / Hong Kong Orchid	12' x 5', 2 1/2" cal, 5' c.L. straight trunk, full canopy
CV2	3	Callistemon viminalis / Weeping Bottlebrush	12' ht., full canopy
* QV2	6	Quercus virginiana / Live Oak	12' x 6', 2 1/2" cal, straight trunk, full canopy
PALMS			
* SP	3	Sabal palmetto / Cabbage Palm	10' - 22' c.L. Hts., staggered Hts., hurricane cut, straight trunk, slick
UB10	28	Wodyetia bifurcata / Foxtail Palm	10' c.L. 4" min cal. crown shaft, straight trunk, full head, unscarred trunk, intact fronds
UBOP	1	Optional Additional Street Tree - Wodyetia bifurcata / Foxtail Palm	10' c.L. 4" min cal. crown shaft, straight trunk, full head, unscarred trunk, intact fronds
SHRUBS, ACCENTS, AND GROUNDCOVER			
CI	182	Chrysobalanus icaco / Coccoloba	3 gal, 20" x 20", full to base

NOTE:
ALL PLANT MATERIAL SHALL MEET OR EXCEED SIZE AND CONTAINER SPECIFICATIONS IN PLANT LIST. PLANT MATERIALS NOT MEETING SPECIFICATIONS WILL BE REJECTED. CONTRACTOR TO COORDINATE AVAILABILITY ISSUES WITH OWNER PRIOR TO COMMENCING WORK.
* DENOTES NATIVE SPECIES

Symbols Legend

D.E.	DRAINAGE EASEMENT	O.E.	OVERHANG EASEMENT
L.M.E.	LAKE MAINTENANCE EASEMENT	G.E.	GRADING EASEMENT
L.M.A.E.	LAKE MAINTENANCE ACCESS EASEMENT	PSL	PORT ST. LUCIE
R.O.W.	RIGHT OF WAY	L.E.	LANDSCAPE EASEMENT
U.E.	UTILITY EASEMENT	D.S.E.	DRAINAGE SWALE EASEMENT
U.E.-R.A.	UTILITY EASEMENT - RESTRICTED AREA (SEE "U" PLAT DESIGNATION)	O.S.	OPEN SPACE
STM	STORM SEWER LINE WITH MANHOLE	SSM	SEED & MULCH
SIM	STORM SEWER LINE WITH CATCH BASIN	SSN	SISSON
SAN	SANITARY SEWER LINE WITH MANHOLE	①	LOT NUMBER
WM	WATER MAIN	⦿	FIRE HYDRANT
W	WATER SVC. TO LOT WITH METER		
W.M.	SANITARY SVC. TO LOT WITH CLEANOUT		



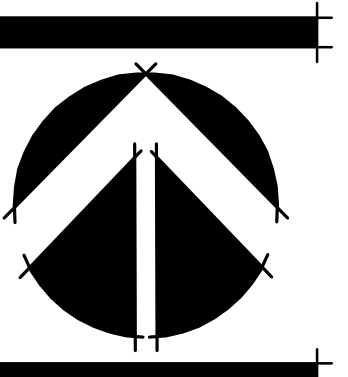
P&LUSD # 5268D

P&L PROJECT NO. 22-288

RIVERLAND - PARCEL 'D' - PLAT 4
 Developer: Riverland Associates IV, LLLP
 PORT ST. LUCIE, FLORIDA
 PLANTING PLAN

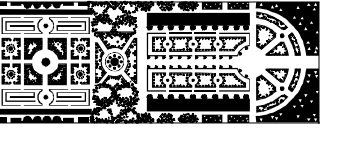
DATE: 10/18/19
DRAWN BY: AJO/TY
JOB NO.: 19-095
SCALE: 1" = 40'-0"
FILENAME: RI D STP 01

REVISIONS:
12/16/22 P&L cmts / new util
5/5/23 P&L cmts
1/31/23 P&L cmts



SHEET:

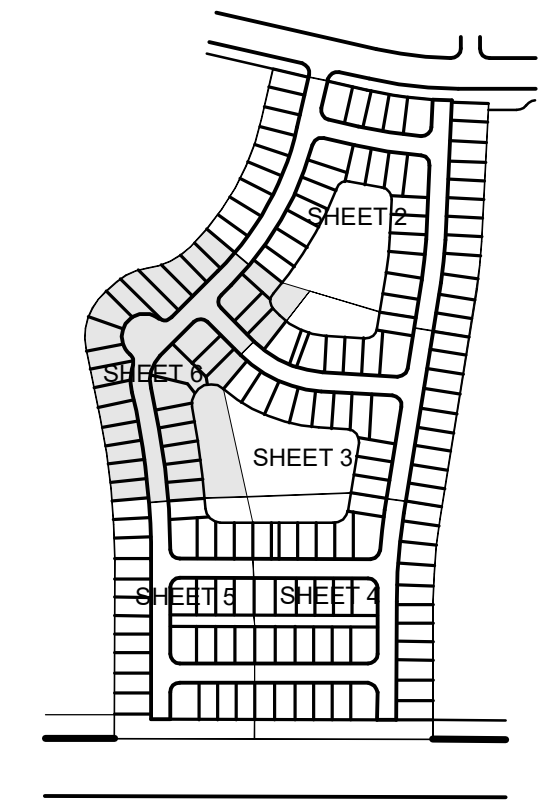
P4-5



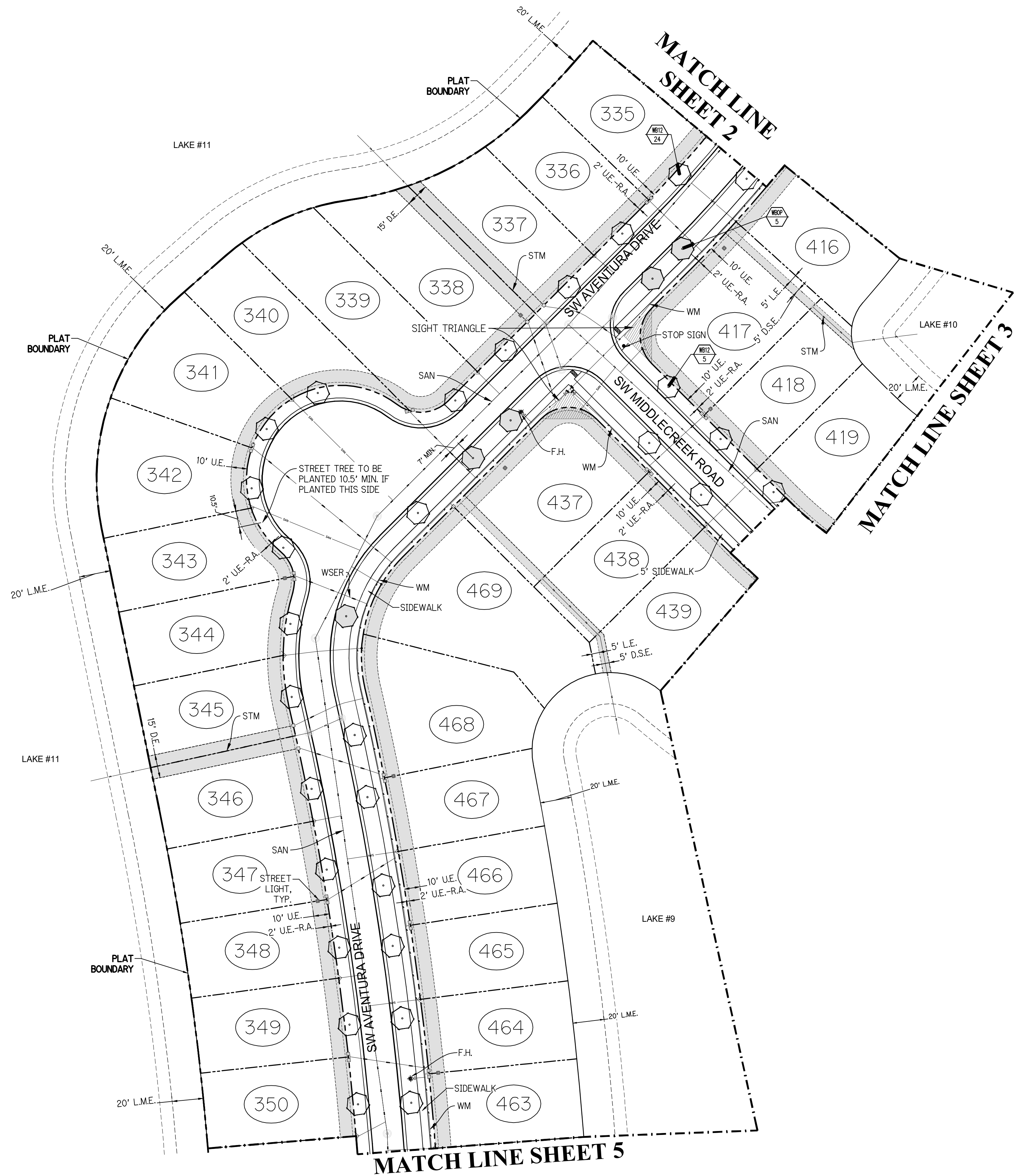
PARKER-YANNETTE
design group, inc.

LANDSCAPE ARCHITECTURE
PLANNING • GRAPHICS
825 South U.S. Highway One
Suite 330
Jupiter, Florida 33477

Telephone: (561) 747-5069
Fax: (561) 747-2041
Email: mail@pydg.com
License #LC-0000297



KEY MAP



RIVERLAND - PARCEL 'D' - PLAT 4
Developer: Riverland Associates IV, LLLP
PORT ST. LUCIE, FLORIDA
PLANTING PLAN

DATE: 10/18/19
DRAWN BY: AJ/OTY
JOB NO.: 19-095
SCALE: 1" = 40'-0"
FILENAME: RI D STP 01

REVISIONS:
12/16/22 PSL cmnts / new utils
5/26/23 PSL cmnts
1/31/23 PSL cmnts

Plant List (Sheet P4-6 Only)

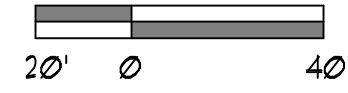
SYM	QTY	NAME	SPECIFICATIONS
WBPB	29	Wodygetia bifurcata / Foxtail Palm	10' c.t., 4" min. cal. crown shaft, straight trunk, full head, unscarred trunk, intact fronds
WBPB	5	Optional Additional Street Trees - Wodygetia bifurcata / Foxtail Palm	10' c.t., 4" min. cal. crown shaft, straight trunk, full head, unscarred trunk, intact fronds

NOTE:
ALL PLANT MATERIAL SHALL MEET OR EXCEED SIZE AND CONTAINER SPECIFICATIONS IN PLANT LIST. PLANT MATERIALS NOT MEETING SPECIFICATIONS WILL BE REJECTED. CONTRACTOR TO COORDINATE AVAILABILITY ISSUES WITH OWNER PRIOR TO COMMENCING WORK.

* DENOTES NATIVE SPECIES

Symbols Legend

D.E.	DRAINAGE EASEMENT	O.E.	OVERHANG EASEMENT
L.M.E.	LAKE MAINTENANCE EASEMENT	G.E.	GRADING EASEMENT
L.M.A.E.	LAKE MAINTENANCE ACCESS EASEMENT	PSL	PORT ST LUCIE
R.O.W.	RIGHT OF WAY	L.E.	LANDSCAPE EASEMENT
U.E.	UTILITY EASEMENT	D.S.E.	DRAINAGE SWALE EASEMENT
U.E.-R.A.	UTILITY EASEMENT - RESTRICTED AREA (SEE "U.E." PLAT DESIGNATION)	O.S.	OPEN SPACE
STM	STORM SEWER LINE WITH MANHOLE	S&M	SEED & MULCH
STM	STORM SEWER LINE WITH CATCH BASIN	SN	SION
SAN	SANITARY SEWER LINE WITH MANHOLE	1	LOT NUMBER
WM	WATER MAIN	⊕	FIRE HYDRANT
W	WATER SVC. TO LOT WITH METER		
W	SANITARY SVC. TO LOT WITH CLEANOUT		
C.O.			



P&LUSD # 5268D

P&L PROJECT NO. 22-288

SHEET:

P4-6