

65' DRAINAGE RIGHT-OF-WAY



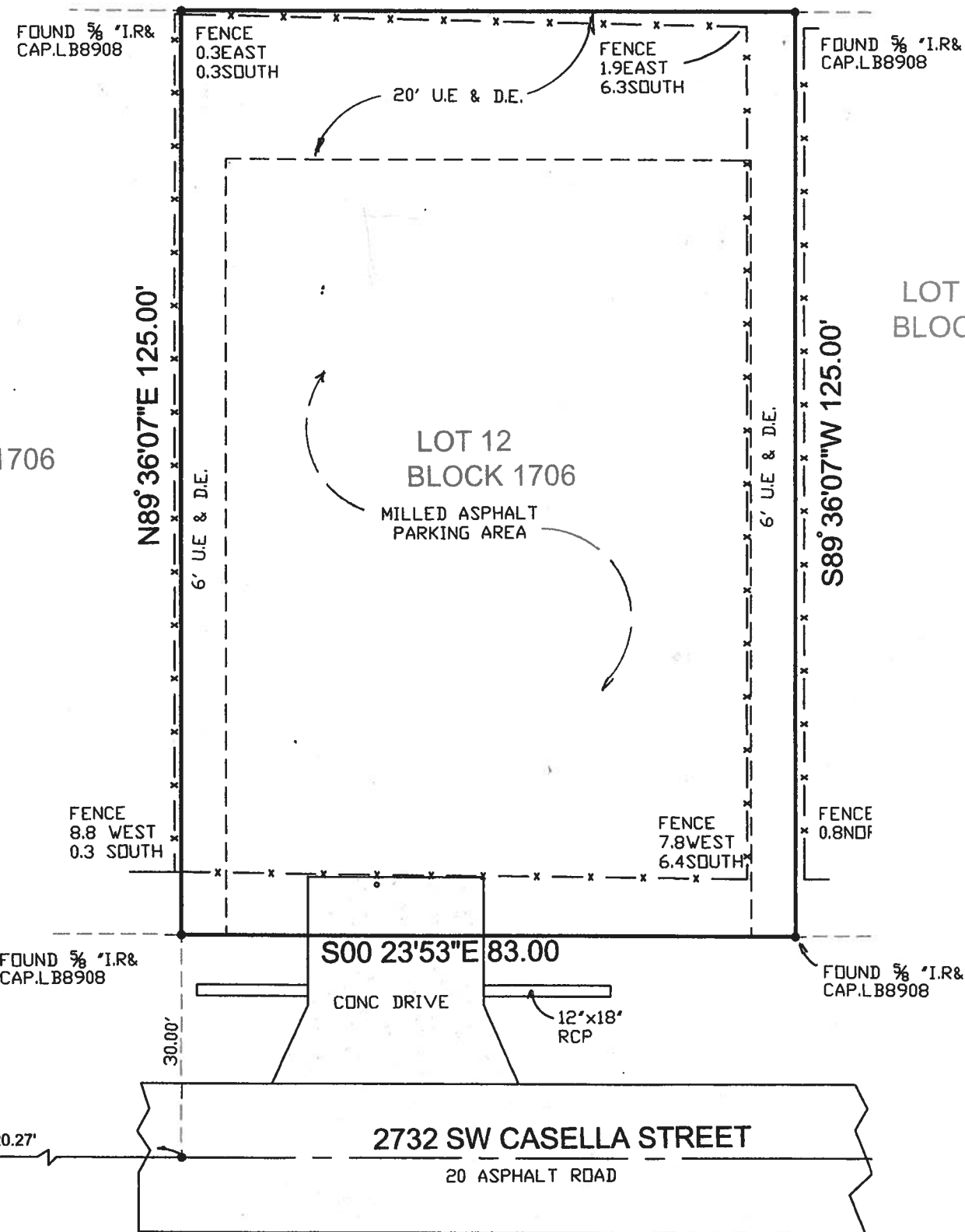
LOT 12, BLOCK 1706

# PORT SAINT LUCIE SECTION 31

According To The Plat Recorded In Plat Book 14, Page 22 Recorded In The Public Record Of Saint Lucie County, Florida Said Land Situate, Lying, And Being In Saint Lucie County, Florida .

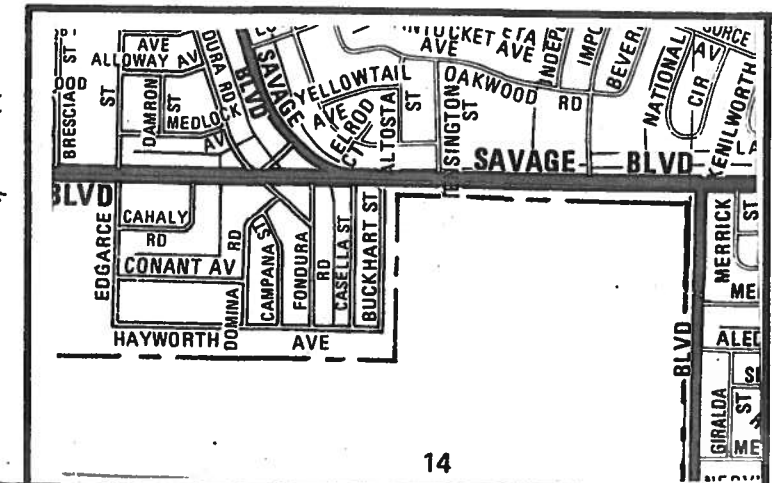
LOT 11  
BLOCK 1706

LOT 13  
BLOCK 1706



### NOTES:

- 1) BEARINGS SHOWN HEREON ARE RELITAVE TO PLAT AND ARE ASSUMED.
- 2) NO ABSTRACT OR TITLE SEARCH WAS PREFORMED TO DISCOVER THE EXISTENCE OF ANY EASEMENTS OR RESTRICTIONS OF RECORD.
- 3) ELEVATIONS SHOWN HEREON ARE BASED ON NORTH AMERICA VERTICAL DATUM OF 1988 UNLESS OTHERWISE NOTED.
- 4) NO BELOW GROUND IMPROVEMENTS, FOOTERS, FOUNDATIONS OR UTILITIES HAVE BEEN LOCATED OR SHOWN ON THIS SURVEY.



D.R.B. = official record book	TRAN. = transformer pad	P.B. = plat book	P = plat	P.G. = page
C.B.S. = concrete block structure	F.P.&L. = Florida power and light	TYP. = typical	Ø = power pole	I.R. = iron rod
P.C.C. = point of compound curve	CM = concrete monument	R/W = right-of-way	M = MEASURED	R = radius
P.C.P. = permanent control point	P.R.C. = point of reverse	∠ = central angle	I.P. = IRON PIPE	D = deed
P.O.C. = point of commencement	P.I. = point of intersection	⊙ = bearing basis line	RP = radius point	D/S = offset
P.O.B. = point of beginning	P.T. = point of tangency	ASPH = asphalt	L = ARC LENGTH	CONC. = concrete
D/E = drainage easement	⊗ = not field measured	M.H. = manhole	CL = centerline	ESMT. = easement
C.M.P. = corrugated metal pipe	WPF = wood privacy fence	U/E = utility easement	ALUM. = aluminum	CALC. = calculated
R.L.S. = registered land surveyor	CHATT = chattahoochee	CLF = chain link fence	P.C. = point of curvature	
L.B. = licensed business	ELEV = elevation	P.R.M. = permanent reference monument		



801 S.E. 6th Ave., Suite 203  
Delray Beach, FL 33483  
Phone 561-243-4624  
Fax 243-4869

AUTHORIZATION NUMBER LB6504

I HEREBY CERTIFY THAT THE SKETCH OF BOUNDARY SURVEY SHOWN HEREON MEETS THE STANDARDS OF PRACTICE SET FORTH IN CHAPTER SJ-17-050-052, FLORIDA ADMINISTRATIVE CODE PURSUANT TO SECTION 472.027, FLORIDA STATUTES.

HARRY A BURGESS PLS 6089

CERTIFIED TO:

FLOOD ZONE: X

MAP NO.: 12111C 0275 J

MAP DATE: 2-16-12

DATE: 4-7-2023

JOB NO: 4-23-033

REVISED:

**NOT VALID  
UNLESS SEALED  
WITH EMBOSSED  
SURVEYOR'S SEAL**