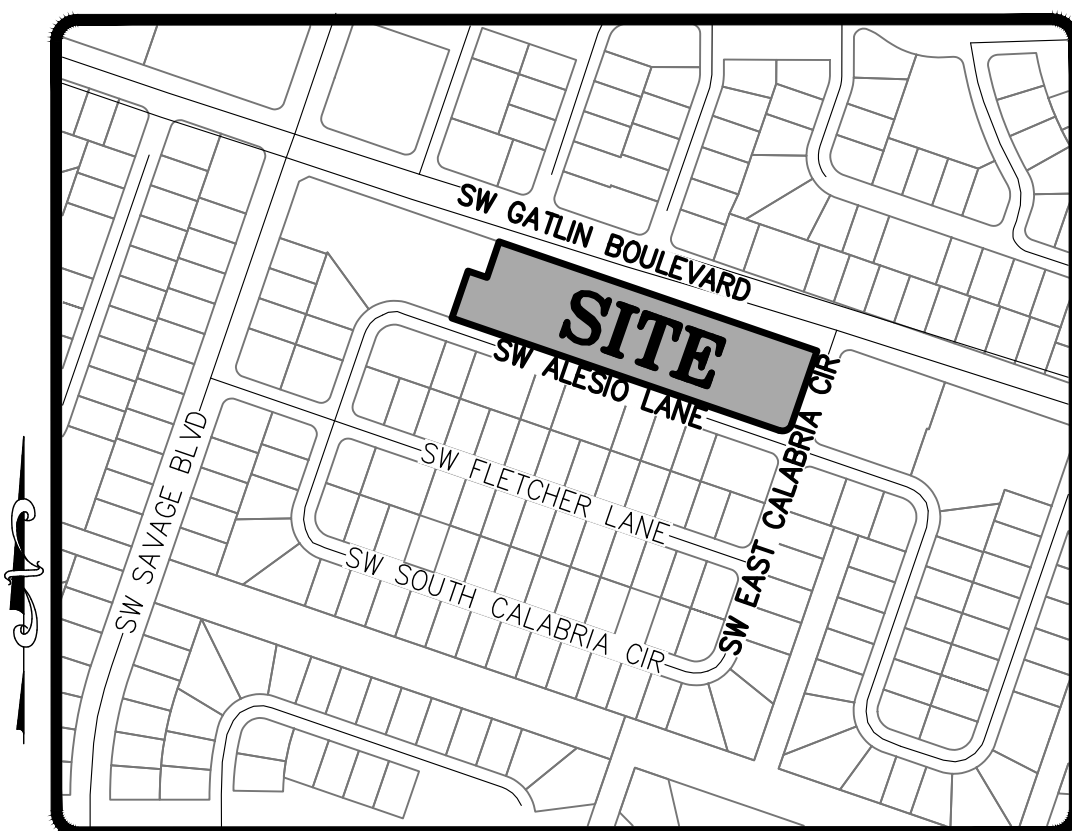


# GATLIN POINTE

BEING A REPLAT OF LOTS 12 THROUGH 32 INCLUSIVE, BLOCK 1388, OF THE PLAT OF PORT ST. LUCIE SECTION FOURTEEN, AS RECORDED IN PLAT BOOK 13, PAGE 5, OF THE PUBLIC RECORDS OF ST. LUCIE COUNTY, FLORIDA, LYING IN SECTION 13, TOWNSHIP 37 SOUTH, RANGE 39 EAST, CITY OF PORT ST. LUCIE, ST. LUCIE COUNTY, FLORIDA.

PLAT BOOK \_\_\_\_\_  
PAGE \_\_\_\_\_

DOCKET NO. \_\_\_\_\_



**SITE MAP**  
NOT TO SCALE

## LEGAL DESCRIPTION

THE LAND REFERRED TO HEREIN BELOW IS SITUATED IN THE CITY OF PORT ST. LUCIE, COUNTY OF ST. LUCIE, STATE OF FLORIDA, AND IS DESCRIBED AS FOLLOWS:

LOTS 12, 14, 15, 18 AND 19, LESS THE NORTH 30 FEET, RESPECTIVELY, BY STIPULATED ORDER OF TAKING AND FINAL JUDGMENT RECORDED IN OFFICIAL RECORDS BOOK 1487, PAGE 2697; SOUTH 95 FEET OF LOTS 16 AND 17; SOUTH 95 FEET OF LOTS 20 AND 21; LOTS 22, 23, 24, 25, 26 AND 27; LOTS 31 AND 32, ALL IN BLOCK 1388, PORT ST. LUCIE SECTION FOURTEEN, ACCORDING TO THE MAP OR PLAT THEREOF, AS RECORDED IN PLAT BOOK 13, PAGES 5, 5A THROUGH 5F, OF THE PUBLIC RECORDS OF ST. LUCIE COUNTY, FLORIDA.

AND

THE SOUTH 95 FEET OF LOT 13; ALL OF LOTS 28 AND 29, BLOCK 1388, PORT ST. LUCIE SECTION FOURTEEN, ACCORDING TO THE MAP OR PLAT THEREOF, AS RECORDED IN PLAT BOOK 13, PAGE(S) 5, 5A THROUGH 5F, OF THE PUBLIC RECORDS OF ST. LUCIE COUNTY, FLORIDA.

AND

LOT 30, BLOCK 1388, PORT ST. LUCIE SECTION FOURTEEN, ACCORDING TO THE MAP OR PLAT THEREOF, AS RECORDED IN PLAT BOOK 13, PAGE(S) 5, 5A THROUGH 5F, OF THE PUBLIC RECORDS OF ST. LUCIE COUNTY, FLORIDA.

CONTAINING 4.41 ACRES, MORE OR LESS.

## CERTIFICATE OF OWNERSHIP & DEDICATION

STATE OF FLORIDA  
COUNTY OF ST. LUCIE  
CITY OF PORT ST. LUCIE

GATLIN POINTE 18 LLC, A FLORIDA LIMITED LIABILITY COMPANY, OWNER OF THE LAND DESCRIBED AND PLATTED HEREIN AS "GATLIN POINTE", BEING IN ST. LUCIE COUNTY, FLORIDA, HAVE CAUSED SAID LANDS TO BE SURVEYED AND PLATTED AS SHOWN HEREON, AND DO HEREBY DEDICATE AS FOLLOWS:

- THE UTILITY EASEMENTS AS SHOWN HEREON ARE UTILITY EASEMENTS WHICH ARE HEREBY DEDICATED TO THE CITY OF PORT ST. LUCIE ("CITY"), ITS SUCCESSORS, AGENTS, EMPLOYEES, CONTRACTORS, DESIGNEES AND ASSIGNS, FOR ACCESS TO, OPERATION, MODIFICATIONS, INSTALLATION OF OR MAINTENANCE OF, PUBLIC UTILITIES FACILITIES, INCLUDING BUT NOT LIMITED TO, WATER AND WASTEWATER LINES, APPURTENANT FACILITIES, AND EQUIPMENT. THERE SHALL BE NO OTHER PUBLIC OR PRIVATE UTILITY FACILITIES INSTALLED IN, ON, OVER, UNDER, OR ACROSS THE EASEMENT AREA WITHOUT THE CITY'S WRITTEN PERMISSION. THERE SHALL BE NO IMPROVEMENTS OF ANY KIND INCLUDING, BUT NOT LIMITED TO, LANDSCAPING CONSTRUCTED WITHIN THE BOUNDARIES OF THE EASEMENT AREA WHICH WOULD RESTRICT THE OPERATION AND MAINTENANCE OF, OR WHICH MAY IN ANY MANNER RESULT IN HARM TO THE CITY'S FACILITIES. THE OWNER(S) OF LOT 1, THEIR SUCCESSORS OR ASSIGNS, SHALL OWN, MAINTAIN, REPAIR AND REPLACE ANY PERMITTED IMPROVEMENTS OVER THE UTILITY EASEMENT, WHICH ARE NOT PRECLUDED BY THE FOREGOING, WHICH MAY BE DAMAGED OR DESTROYED BY THE CITY, ITS SUCCESSORS OR ASSIGNS, DESIGNERS OR CONTRACTORS IN THE CONSTRUCTION, OPERATION, MAINTENANCE OF, OR ACCESS TO, THE CITY'S FACILITIES. THE CITY, ITS SUCCESSORS OR ASSIGNS, SHALL HAVE THE RIGHT TO REQUIRE THE REMOVAL OF ANY IMPROVEMENTS, WHICH ARE CONSTRUCTED IN VIOLATION OF THE CONDITIONS SET FORTH ABOVE. IF VIOLATING IMPROVEMENTS ARE NOT REMOVED UPON REQUEST, THE CITY, ITS SUCCESSORS OR ASSIGNS, DESIGNERS OR CONTRACTORS WILL REMOVE SAID IMPROVEMENTS WITHOUT LIABILITY OR RESPONSIBILITY THEREFORE. THE CITY OF PORT ST. LUCIE SHALL NOT BE RESPONSIBLE FOR ANY MAINTENANCE OBLIGATIONS OF SAID EASEMENT EXCEPT AS SHALL RELATE TO THE SERVICING OF SUCH PUBLIC UTILITIES BY THE CITY OF PORT ST. LUCIE.
- THE LIFT STATION EASEMENT SHOWN HEREON, IS A UTILITY EASEMENT WHICH IS HEREBY DEDICATED TO THE CITY OF PORT ST. LUCIE, ITS SUCCESSORS AND ASSIGNS, FOR ACCESS TO, AND THE INSTALLATION AND MAINTENANCE OF, PUBLIC UTILITY FACILITIES, INCLUDING BUT NOT LIMITED TO, WATER AND WASTEWATER LINES AND APPURTENANT FACILITIES. THERE SHALL BE NO OTHER PUBLIC OR PRIVATE UTILITY FACILITIES INSTALLED IN, ON, OVER, UNDER, OR ACROSS THE EASEMENT AREA WITHOUT THE CITY'S WRITTEN PERMISSION. THERE SHALL BE NO IMPROVEMENTS OF ANY KIND INCLUDING, BUT NOT LIMITED TO, LANDSCAPING CONSTRUCTED WITHIN THE BOUNDARIES OF THE EASEMENT AREA WHICH WOULD RESTRICT THE OPERATION AND MAINTENANCE OF, OR WHICH MAY IN ANY MANNER RESULT IN HARM TO, THE CITY'S FACILITIES. GATLIN POINTE 18, LLC, A FLORIDA LIMITED LIABILITY COMPANY, AND THE SUCCESSOR-OWNERS OF THE UNDERLYING REAL PROPERTY, SHALL OWN, MAINTAIN, REPAIR AND REPLACE ANY PERMITTED IMPROVEMENTS OVER THE UTILITY EASEMENT, WHICH ARE NOT PRECLUDED BY THE FOREGOING, WHICH MAY BE DAMAGED OR DESTROYED BY THE CITY OF PORT ST. LUCIE, ITS SUCCESSORS OR ASSIGNS, DESIGNERS OR CONTRACTORS IN THE OPERATION, MAINTENANCE OF, OR ACCESS TO, THE CITY'S FACILITIES. THE CITY OF PORT ST. LUCIE, ITS SUCCESSORS OR ASSIGNS, SHALL HAVE THE RIGHT TO REQUIRE THE REMOVAL OF ANY IMPROVEMENTS, WHICH ARE CONSTRUCTED IN VIOLATION OF THE CONDITIONS SET FORTH ABOVE. IN THE EVENT, SUCH VIOLATING IMPROVEMENTS ARE NOT REMOVED UPON REQUEST, THEY SHALL BE SUBJECT TO REMOVAL BY THE CITY OF PORT ST. LUCIE, ITS SUCCESSORS OR ASSIGNS, DESIGNERS OR CONTRACTORS WITHOUT LIABILITY OR RESPONSIBILITY THEREFORE. THE CITY OF PORT ST. LUCIE SHALL NOT BE RESPONSIBLE FOR ANY MAINTENANCE OBLIGATIONS OF SAID EASEMENT EXCEPT AS SHALL RELATE TO THE SERVICING OF SUCH PUBLIC UTILITIES BY THE CITY OF PORT ST. LUCIE.
- THE INGRESS/EGRESS EASEMENT, AS SHOWN HEREON, IS HEREBY DEDICATED FOR INGRESS AND EGRESS PURPOSES, FOR THE BENEFIT OF LOTS 1, 2, 3, AND 4, AND THE OWNERS OF SAID LOTS, AND THEIR SUCCESSORS AND ASSIGNS. AN EASEMENT OVER AND UNDER SAID INGRESS AND EGRESS EASEMENT, AS SHOWN HEREON, IS ALSO DEDICATED IN FAVOR OF THE CITY OF PORT ST. LUCIE, ITS SUCCESSORS AND ASSIGNS, FOR THE CITY OF PORT ST. LUCIE SERVICE AND EMERGENCY VEHICLES. THE CITY OF PORT ST. LUCIE SHALL HAVE THE RIGHT BUT NOT THE OBLIGATION TO MAINTAIN THE INGRESS AND EGRESS EASEMENT.

IN WITNESS WHEREOF, THE ABOVE NAMED GATLIN POINTE 18 LLC, A FLORIDA LIMITED LIABILITY COMPANY, HAS CAUSED THESE PRESENTS TO BE SIGNED BY ITS AUTHORIZED SIGNATORY, THIS \_\_\_\_\_ DAY OF \_\_\_\_\_, 20\_\_\_\_.

GATLIN POINTE 18 LLC, A FLORIDA LIMITED LIABILITY COMPANY

PRINT NAME: \_\_\_\_\_, POSITION: \_\_\_\_\_

WITNESS SIGNATURE \_\_\_\_\_ WITNESS SIGNATURE \_\_\_\_\_

PRINTED NAME \_\_\_\_\_ PRINTED NAME \_\_\_\_\_

## ACKNOWLEDGEMENT

STATE OF \_\_\_\_\_

COUNTY OF \_\_\_\_\_

THE FOREGOING INSTRUMENT WAS ACKNOWLEDGED BEFORE ME BY MEANS OF  PHYSICAL PRESENCE OR  ONLINE NOTARIZATION, THIS \_\_\_\_ DAY OF \_\_\_\_\_, 20\_\_\_\_, BY \_\_\_\_\_, THE \_\_\_\_\_ OF GATLIN POINTE 18 LLC, WHO  IS PERSONALLY KNOWN TO ME OR  HAS PRODUCED \_\_\_\_\_ AS IDENTIFICATION.

NOTARY SIGNATURE \_\_\_\_\_

PRINT NAME: \_\_\_\_\_

NOTARY PUBLIC

STATE OF \_\_\_\_\_ AT LARGE

MY COMMISSION EXPIRES: \_\_\_\_\_

## MORTGAGEE'S JOINDER AND CONSENT

STATE OF \_\_\_\_\_

COUNTY OF \_\_\_\_\_

\_\_\_\_\_, ("MORTGAGEE"), THE OWNER AND HOLDER OF THAT CERTAIN MORTGAGE DATED THE \_\_\_\_ DAY OF \_\_\_\_\_, 20\_\_\_\_, IN OFFICIAL RECORDS BOOK \_\_\_\_\_, PAGE \_\_\_\_\_, IN THE PUBLIC RECORDS OF ST. LUCIE COUNTY, FLORIDA, DOES HEREBY CONSENT TO THE DEDICATIONS HEREON AND DOES SUBORDINATE ITS MORTGAGE TO SUCH DEDICATIONS.

LENDER: \_\_\_\_\_ WITNESS \_\_\_\_\_

BY: \_\_\_\_\_

PRINT NAME: \_\_\_\_\_

POSITION: \_\_\_\_\_

[CORPORATE SEAL]

PRINTED NAME \_\_\_\_\_

PRINTED NAME \_\_\_\_\_

## ACKNOWLEDGEMENT

STATE OF \_\_\_\_\_

COUNTY OF \_\_\_\_\_

THE FOREGOING INSTRUMENT WAS ACKNOWLEDGED BEFORE ME BY MEANS OF  PHYSICAL PRESENCE OR  ONLINE NOTARIZATION, THIS \_\_\_\_ DAY OF \_\_\_\_\_, 20\_\_\_\_, BY \_\_\_\_\_, THE \_\_\_\_\_ OF \_\_\_\_\_, WHO  IS PERSONALLY KNOWN TO ME OR  HAS PRODUCED \_\_\_\_\_ AS IDENTIFICATION.

NOTARY SIGNATURE \_\_\_\_\_

PRINT NAME: \_\_\_\_\_

NOTARY PUBLIC

STATE OF \_\_\_\_\_ AT LARGE

MY COMMISSION EXPIRES: \_\_\_\_\_

## TITLE CERTIFICATION

STATE OF \_\_\_\_\_

COUNTY OF \_\_\_\_\_

I, THE UNDERSIGNED, SEYMOUR N. SINGER AN ATTORNEY AS DULY LICENSED IN THE STATE OF FLORIDA, DO HEREBY CERTIFY THAT, AS OF THE \_\_\_\_ DAY OF \_\_\_\_\_, 20\_\_\_\_:

- THE RECORD TITLE TO THE LAND AS DESCRIBED AND SHOWN HEREON IS IN THE NAME OF GATLIN POINTE 18 LLC, A FLORIDA LIMITED LIABILITY COMPANY, THE ENTITY EXECUTING THE DEDICATION.
- THERE IS A MORTGAGE OF RECORD, ENCUMBERING THE LAND DESCRIBED HEREIN, BEING THAT CERTAIN MORTGAGE HELD BY \_\_\_\_\_, AS RECORDED IN OFFICIAL RECORDS BOOK \_\_\_\_\_, PAGE \_\_\_\_\_ IN THE PUBLIC RECORDS OF ST. LUCIE COUNTY, FLORIDA.
- THAT ALL COUNTY TAXES AND ASSESSMENTS ARE PAID TO DATE.
- PURSUANT TO FLORIDA STATUTE 197.192, ALL TAXES HAVE BEEN PAID THROUGH THE YEAR 20\_\_\_\_.
- NO CONFLICTING RIGHTS-OF-WAY, EASEMENTS OR PLATS EXIST.

DATED THIS \_\_\_\_ DAY OF \_\_\_\_\_, 20\_\_\_\_.

SIGNED: \_\_\_\_\_

SEYMOUR N. SINGER, ESQ.

SEYMOUR N. SINGER P.A.

7401 WILES ROAD, SUITE 230

CORAL SPRINGS, FL 33067

FLORIDA BAR NUMBER 352373

## APPROVAL OF CITY COUNCIL

STATE OF FLORIDA  
COUNTY OF ST. LUCIE, CITY OF PORT ST. LUCIE

IT IS HEREBY CERTIFIED THAT THIS PLAT OF "GATLIN POINTE", HAS BEEN OFFICIALLY APPROVED FOR RECORD, BY THE CITY COUNCIL, OF THE CITY OF PORT ST. LUCIE, FLORIDA AND AND THAT ALL DEDICATIONS HEREIN TO THE CITY OF PORT ST. LUCIE ARE ACCEPTED, THIS \_\_\_\_ DAY OF \_\_\_\_\_, 20\_\_\_\_.

\_\_\_\_\_  
CITY OF PORT ST. LUCIE

SALLY WALSH, CITY CLERK SHANNON M. MARTIN, MAYOR

## CLERK'S RECORDING CERTIFICATE

STATE OF FLORIDA  
COUNTY OF ST. LUCIE

I, MICHELLE R. MILLER, CLERK OF THE CIRCUIT COURT OF ST. LUCIE COUNTY, FLORIDA, DO HEREBY CERTIFY THAT THIS PLAT HAS BEEN EXAMINED AND THAT IT COMPLIES IN FORM WITH ALL THE REQUIREMENTS OF THE LAWS OF FLORIDA PERTAINING TO MAPS AND PLATS AND THAT THIS PLAT HAS BEEN FILED FOR RECORD IN PLAT BOOK \_\_\_\_\_

\_\_\_\_\_, PAGE(S) \_\_\_\_\_ OF THE PUBLIC RECORDS OF ST. LUCIE COUNTY, FLORIDA,

THIS \_\_\_\_ DAY OF \_\_\_\_\_, 20\_\_\_\_.

MICHELLE R. MILLER, CLERK OF THE CIRCUIT COURT  
ST. LUCIE COUNTY, FLORIDA

SEAL  
CLERK OF  
THE COURT

SEAL  
CITY OF PORT  
SAINT LUCIE

## SURVEYOR'S CERTIFICATE

I, MICHAEL T. OWEN, DO HEREBY CERTIFY THAT (A) THIS PLAT OF GATLIN POINTE IS TRUE AND CORRECT AND WAS PREPARED FROM AN ACTUAL SURVEY OF THE PROPERTY MADE BY ME OR UNDER MY RESPONSIBLE DIRECTION AND SUPERVISION; (B) SAID SURVEY IS TRUE AND CORRECT TO THE BEST OF MY KNOWLEDGE AND BELIEF; (C) ALL PERMANENT REFERENCE MONUMENTS SHOWN HEREON ACTUALLY EXIST AND THEIR LOCATION, SIZE, TYPE, AND MATERIAL ADHERE TO THE REQUIREMENTS OF CHAPTER 177, FLORIDA STATUTES; AND (D) THE SURVEY DATA COMPLIES WITH ALL THE REQUIREMENTS OF CHAPTER 177, FLORIDA STATUTES, AS AMENDED, AND THE ORDINANCES OF THE CITY OF PORT ST. LUCIE AND ST. LUCIE COUNTY, FLORIDA.

DATED THIS \_\_\_\_ DAY OF \_\_\_\_\_, 20\_\_\_\_.

SEAL

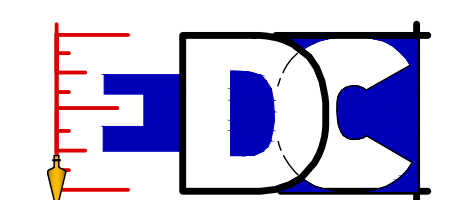
SURVEYOR

MICHAEL T. OWEN  
PROFESSIONAL SURVEYOR & MAPPER  
FLORIDA CERTIFICATE NO. 5556  
EDC, INC. LB#8098  
10250 SW VILLAGE PARKWAY  
PORT ST. LUCIE, FLORIDA 34987

## NOTES:

- NOTICE: THIS PLAT, AS RECORDED IN ITS GRAPHIC FORM, IS THE OFFICIAL DEPICTION OF THE SUBDIVIDED LANDS DESCRIBED HEREIN AND WILL IN NO CIRCUMSTANCES BE SUPPLANTED IN AUTHORITY BY ANY OTHER GRAPHIC OR DIGITAL FORM OF THE PLAT. THERE MAY BE ADDITIONAL RESTRICTIONS THAT ARE NOT RECORDED ON THIS PLAT THAT MAY BE FOUND IN THE PUBLIC RECORDS OF THIS COUNTY.
- THERE MAY BE ADDITIONAL RESTRICTIONS THAT ARE NOT RECORDED ON THIS PLAT THAT MAY BE FOUND IN THE PUBLIC RECORDS OF ST. LUCIE COUNTY, FLORIDA.
- BEARINGS SHOWN HEREON ARE RELATIVE TO THE CENTERLINE OF ALESIO LANE, A 60.00-FOOT-WIDE RIGHT-OF-WAY. SAID CENTERLINE LINE HAS A BEARING OF NORTH 71°01'27" WEST.
- PLAT CONTAINS 4.41 ACRES, MORE OR LESS.
- ALL TRACT CORNERS WILL BE SET IN ACCORDANCE WITH CHAPTER 177, F.S.
- THIS PLAT HAS BEEN REVIEWED FOR CONFORMITY TO CHAPTER 177, FLORIDA STATUTES, BY A PROFESSIONAL SURVEYOR AND MAPPER EMPLOYED BY OR UNDER CONTRACT WITH THE CITY OF PORT ST. LUCIE.

PREPARED BY MICHAEL T. OWEN  
FLORIDA PROFESSIONAL SURVEYOR AND MAPPER No. 5556



ENGINEERS & SURVEYORS & ENVIRONMENTAL

PORT SAINT LUCIE  
10250 SW VILLAGE PARKWAY SUITE 201  
PORT SAINT LUCIE, FL 34987  
772-340-4990  
www.edc-inc.com

F.B.P.E. CERTIFICATE OF AUTHORIZATION 9935  
L.B. CERTIFICATE OF AUTHORIZATION 6098

EDC PROJECT #20-260  
CITY OF PORT ST. LUCIE  
PROJECT NO. P22-012  
PSLUSD FILE NO. 5381

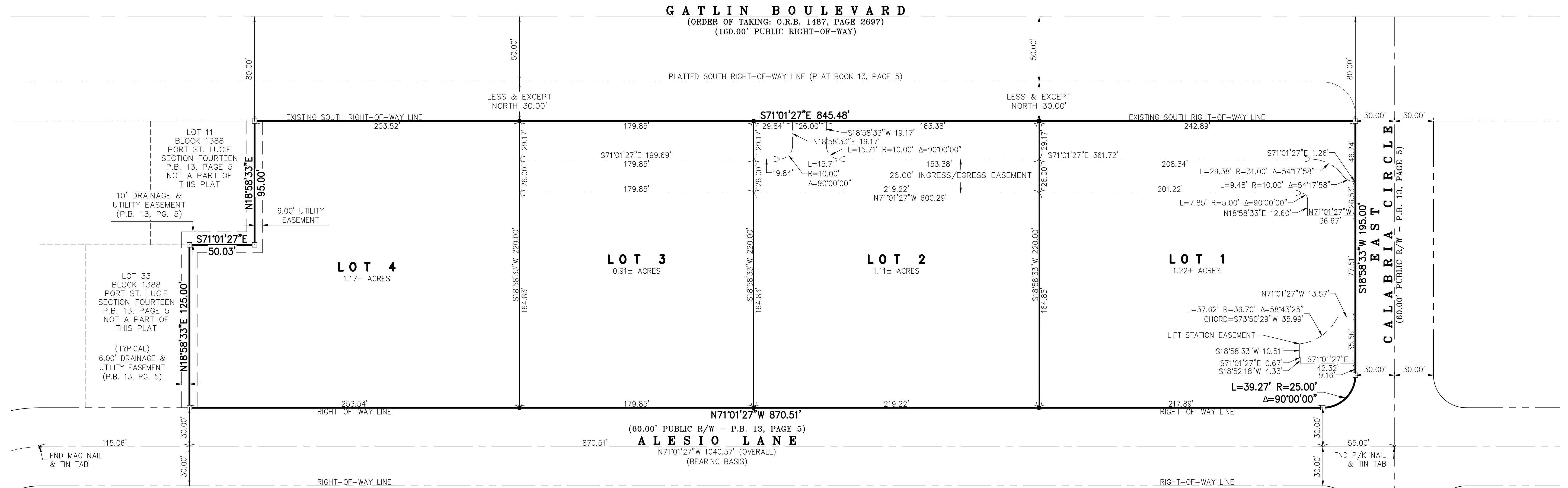
# GATLIN POINTE

BEING A REPLAT OF LOTS 12 THROUGH 32 INCLUSIVE, BLOCK 1388, OF THE PLAT OF PORT ST. LUCIE SECTION FOURTEEN, AS RECORDED IN PLAT BOOK 13, PAGE 5, OF THE PUBLIC RECORDS OF ST. LUCIE COUNTY, FLORIDA, LYING IN SECTION 13, TOWNSHIP 37 SOUTH, RANGE 39 EAST, CITY OF PORT ST. LUCIE, ST. LUCIE COUNTY, FLORIDA.

PLAT BOOK \_\_\_\_\_

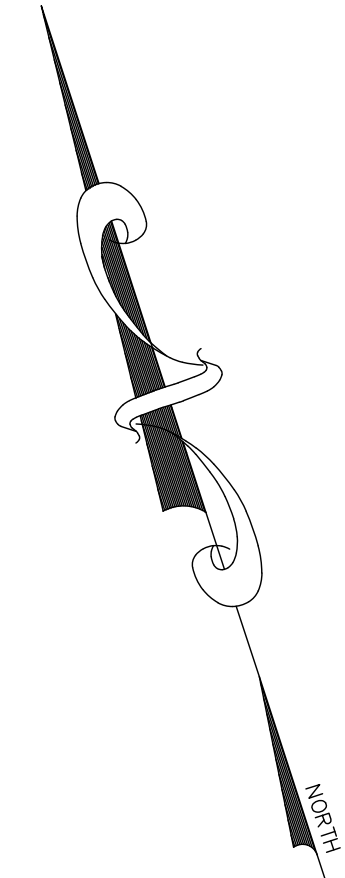
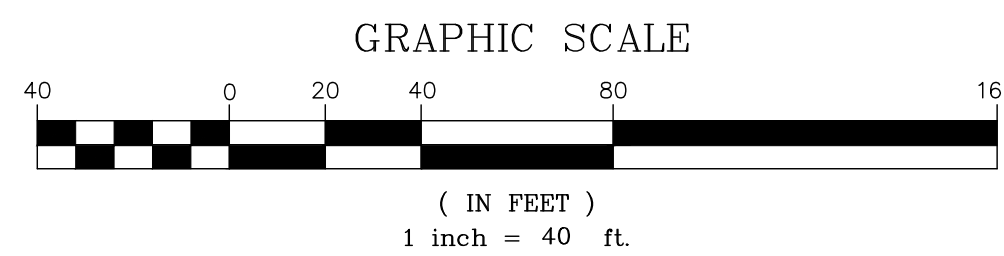
PAGE \_\_\_\_\_

DOCKET NO. \_\_\_\_\_

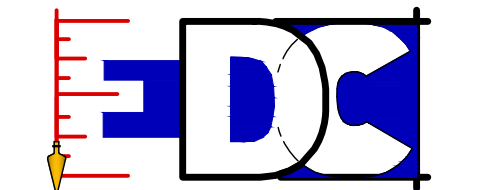


### LEGEND

□ INDICATES (P.R.M.) PERMANENT REFERENCE MONUMENT SET 5/8" IRON ROD & CAP STAMPED "PRM LB 8098" UNLESS OTHERWISE NOTED	● INDICATES (P.C.P.) PERMANENT CONTROL POINT SET STAMPED "PCP LB 8098" UNLESS OTHERWISE NOTED	• INDICATES TRACT CORNER 5/8" IRON & CAP STAMPED "LB 8098"	P.O.C. POINT OF COMMENCEMENT	P.O.B. POINT OF BEGINNING	P.L.S. PROFESSIONAL LAND SURVEYOR	P.S.M. PROFESSIONAL SURVEYOR & MAPPER	L.S. LAND SURVEYOR	L.B. LICENSED BUSINESS	P.R.M. PERMANENT REFERENCE MONUMENT	P.C.P. PERMANENT CONTROL POINT	FD FOUND	IR&C 5/8" IRON ROD & CAP	CM CONCRETE MONUMENT	IR IRON ROD	O.R.B. OFFICIAL RECORDS BOOK	P.B. PLAT BOOK	PC PAGE	B.E. BUFFER EASEMENT	U.E. UTILITY EASEMENT	P.U.E. PUBLIC UTILITY EASEMENT	I.E.E. INGRESS/EGRESS EASEMENT	REC. RECREATION TRACT	NGS NATIONAL GEODETIC SURVEY	L.B.T. LANDSCAPE BUFFER TRACT	L.S.E. LIFT STATION EASEMENT	O.S.T. OPEN SPACE TRACT	W.M.T. WATER MANAGEMENT TRACT	R/W RIGHT-OF-WAY	(NR) NON-RADIAL	(D) DEED DISTANCE	(O) CALCULATED DISTANCE	SEC. SECTION	TWP. TOWNSHIP	RGE. RANGE	S.P.C. STATE PLANE COORDINATE	S.F. SQUARE FEET	CCR CERTIFIED CORNER RECORD	A/D CURVE CENTRAL ANGLE/DELTA	R RADIUS	L CURVE LENGTH	CB CHORD BEARING	CD CHORD DISTANCE
--	---	--	------------------------------	---------------------------	-----------------------------------	---------------------------------------	--------------------	------------------------	-------------------------------------	--------------------------------	----------	--------------------------	----------------------	-------------	------------------------------	----------------	---------	----------------------	-----------------------	--------------------------------	--------------------------------	-----------------------	------------------------------	-------------------------------	------------------------------	-------------------------	-------------------------------	------------------	-----------------	-------------------	-------------------------	--------------	---------------	------------	-------------------------------	------------------	-----------------------------	-------------------------------	----------	----------------	------------------	-------------------



PREPARED BY MICHAEL T. OWEN  
FLORIDA PROFESSIONAL SURVEYOR AND MAPPER No. 5556



**ENGINEERS & SURVEYORS & ENVIRONMENTAL**

PORT SAINT LUCIE  
10250 SW VILLAGE PARKWAY SUITE 201  
PORT SAINT LUCIE, FL 34987  
772-340-4990  
www.edc-inc.com

EDC PROJECT #20-260  
CITY OF PORT ST. LUCIE  
PROJECT NO. P22-012  
PSLUSD FILE NO. 5381

F.B.P.E. CERTIFICATE OF AUTHORIZATION 9935  
L.B. CERTIFICATE OF AUTHORIZATION 6098