

PHASE 1

Duck Court - Phase 1

Design, Survey
& Permitting - \$45,000
Site Development - \$65,000

Large Trees - \$4,000
Med. Trees - \$2,625
Small Trees - \$2,250
Palms - \$5,250

Subtotal = \$124,125
Contingency = \$18,619

Phase 1 - Cost Estimate

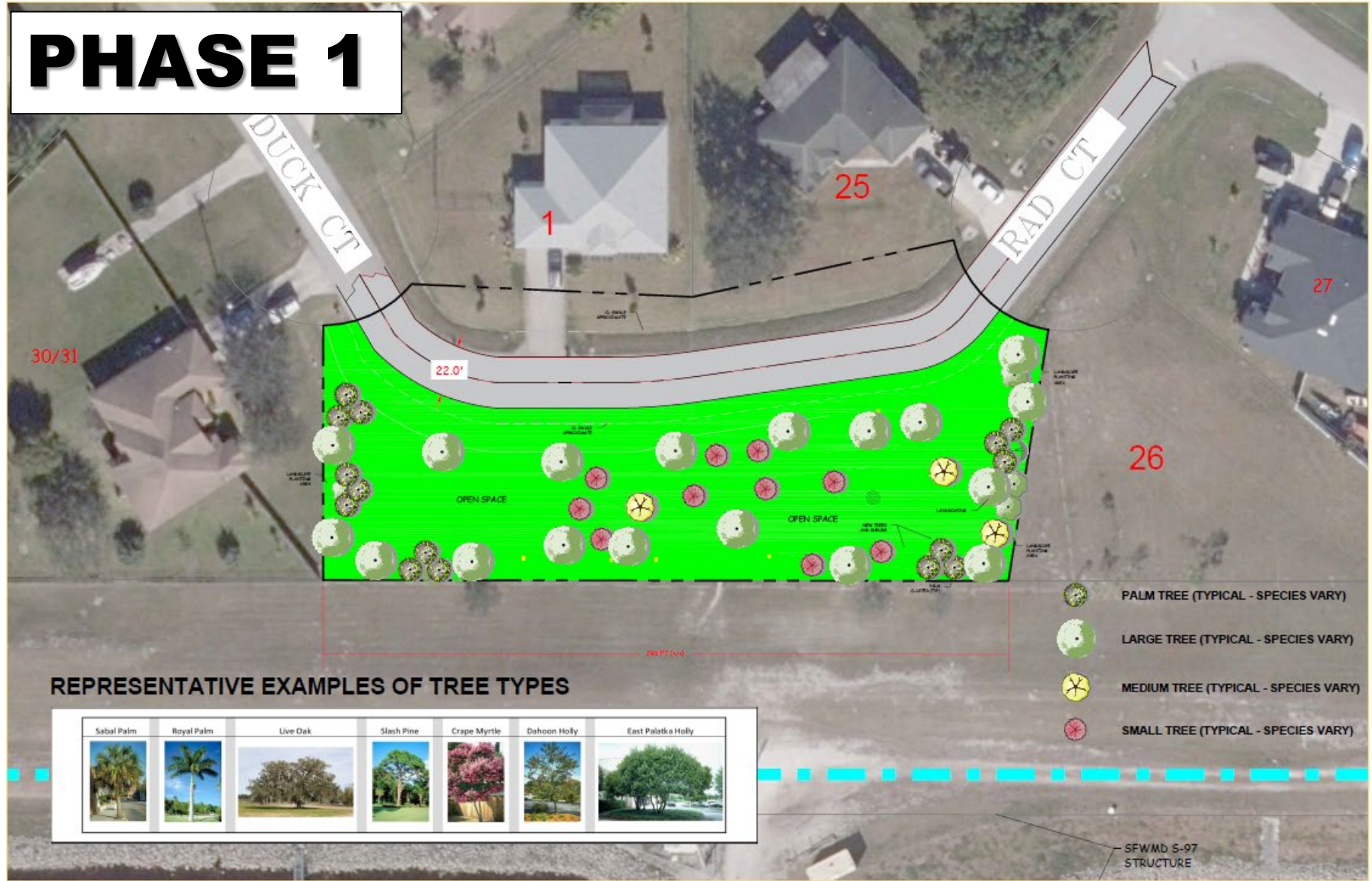
Total - \$142,744

Funding

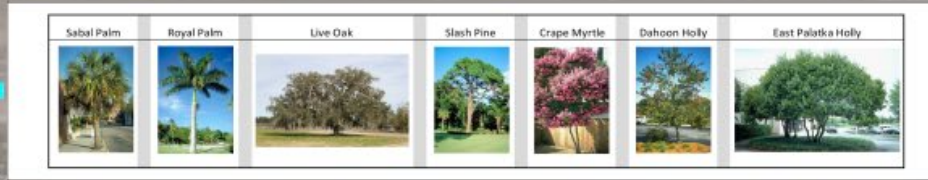
CIP FY21/22

301 NSD General Fund

\$150,000



REPRESENTATIVE EXAMPLES OF TREE TYPES



- PALM TREE (TYPICAL - SPECIES VARY)
- LARGE TREE (TYPICAL - SPECIES VARY)
- MEDIUM TREE (TYPICAL - SPECIES VARY)
- SMALL TREE (TYPICAL - SPECIES VARY)

Duck Court - Phase 2

Design, Survey
& Permitting - \$25,000
Site Development - \$65,000

Sidewalks - \$50,000
On-Street Parking - \$100,000
Adj. Street Paving - \$637,500
Med. Trees - \$875
Small Trees - \$4,500
Palms - \$3,750
Small Shrubs - \$37,500

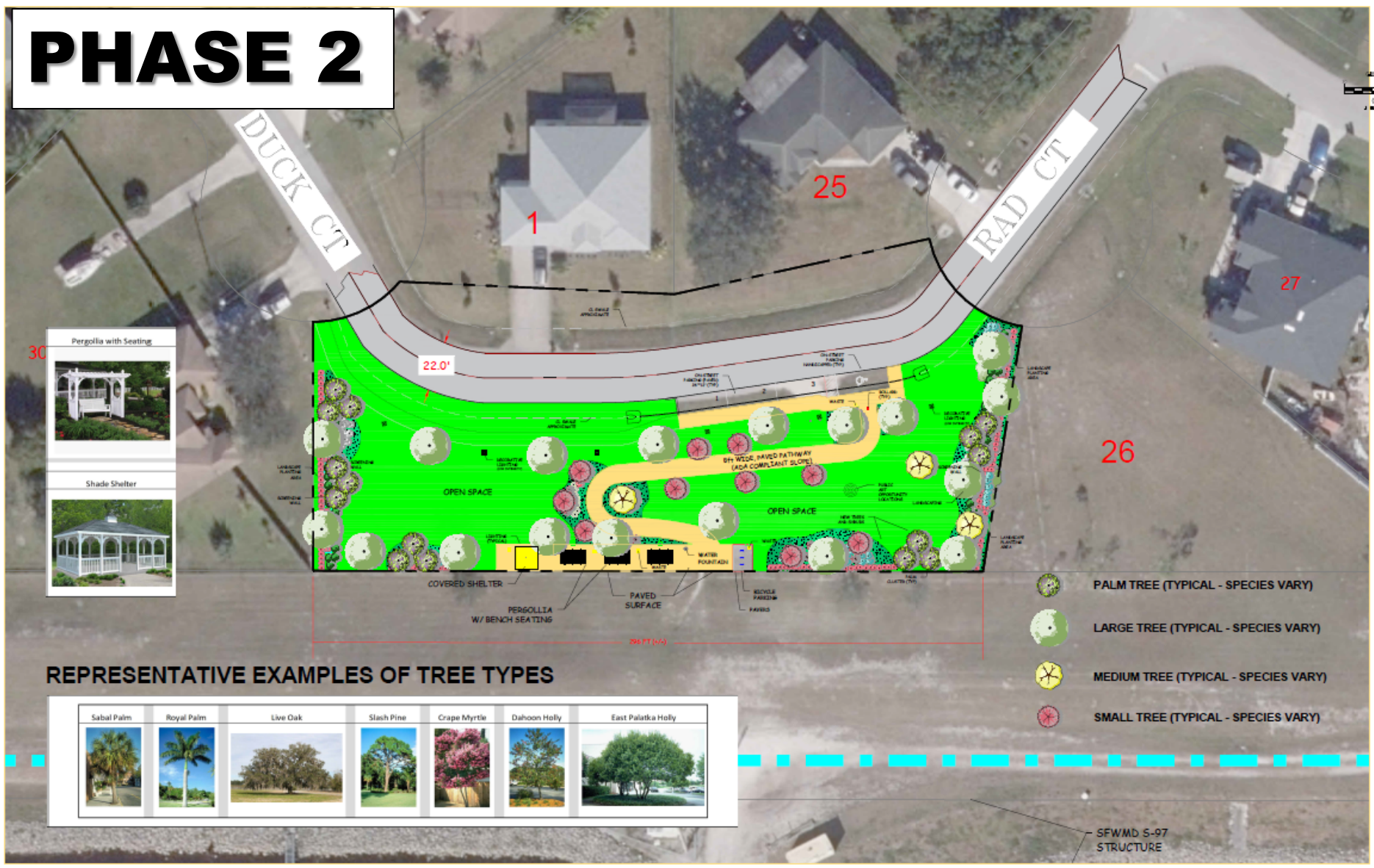
Pergola with
Benches/Swings - \$25,000
Covered Shelter (Sm.
Pavilion) - \$35,000
Trash Cans - \$1,750
Bike Racks - \$4,500
Lighting - \$14,000
Signage - \$15,000
Fencing - \$43,750

Subtotal = \$1,063,125
Contingency = \$159,469

Phase 2 - Cost Estimate

Total - \$1,222,594

Funding
Contingent upon City
Council Direction



REPRESENTATIVE EXAMPLES OF TREE TYPES

Sabal Palm	Royal Palm	Live Oak	Slash Pine	Crape Myrtle	Dahoon Holly	East Palatka Holly

COMPILES	FIELD BK./PG.



CULPEPPER & TERPENING INC
2880 SOUTH 28th STREET • FORT PIERCE, FLORIDA 34881
PHONE 772-484-0287 • FAX 772-486-9197 • www.culpepper.com
STATE OF FLORIDA BOARD OF PROFESSIONAL ENGINEERS AUTHORIZATION NO. 6388

- REVISIONS -		BY	DATE

BY	DATE
DESIGNER	
CHECKER	
TITLE	
APPROVED	

DUCK CT. PARK - PHASE 2
CONCEPTUAL SITE PLAN

DATE: 10/26/23
WORK: SCALE: 1/8"=1'-0"
REV: SCALE: 1/8"=1'-0"
JOB No.: 21-037
SHEET 1 of 1