

NOTES:

1. SKETCH OF DESCRIPTIONS OR THE COPIES THEREOF ARE NOT VALID WITHOUT THE ORIGINAL SIGNATURE AND ORIGINAL SEAL, OR THE AUTHENTICATED ELECTRONIC SIGNATURE AND SEAL OF A FLORIDA LICENSED PROFESSIONAL LAND SURVEYOR AND MAPPER.
2. ADDITIONS OR DELETIONS TO THE SKETCH OF DESCRIPTIONS BY OTHER THAN THE SIGNING PARTY OR PARTIES IS PROHIBITED WITHOUT WRITTEN CONSENT OF THE SIGNING PARTY OR PARTIES.
3. LANDS SHOWN HEREON ARE NOT ABSTRACTED FOR RIGHTS-OF-WAY, EASEMENTS, OWNERSHIP, OR OTHER INSTRUMENTS OF RECORD.
4. BEARINGS SHOWN HEREON ARE RELATIVE TO A BEARING OF N00°02'56"W ALONG THE WEST LINE OF TRACT "M", PORT ST. LUCIE SECTION THIRTY THREE, AS RECORDED IN PLAT BOOK 15, PAGE 1, OF THE PUBLIC RECORDS OF ST. LUCIE COUNTY, FLORIDA.
5. DATA SHOWN HEREON WAS COMPILED FROM INSTRUMENTS OF RECORD AND DOES NOT CONSTITUTE A FIELD SURVEY AS SUCH.
6. THIS IS NOT A SURVEY.

CERTIFICATE:

I HEREBY CERTIFY THAT THE ATTACHED SKETCH OF DESCRIPTION OF THE HEREON DESCRIBED PROPERTY IS TRUE AND CORRECT TO THE BEST OF MY KNOWLEDGE AND BELIEF AS PREPARED UNDER MY DIRECTION ON FEBRUARY 11, 2026. I FURTHER CERTIFY THAT THIS SKETCH OF DESCRIPTION MEETS THE STANDARDS OF PRACTICE SET FORTH IN CHAPTER 5J-17 ADOPTED BY THE FLORIDA BOARD OF SURVEYORS AND MAPPERS PURSUANT TO FLORIDA STATUTES 472.027.

SHEET 1 OF 5



CAULFIELD & WHEELER, INC.

CIVIL ENGINEERING
 LANDSCAPE ARCHITECTURE – SURVEYING
 7900 GLADES ROAD – SUITE 100
 BOCA RATON, FLORIDA 33434
 PHONE (561)–392–1991

DAVID P. LINDLEY
 PROFESSIONAL LAND
 SURVEYOR LS5005
 STATE OF FLORIDA
 L.B. 3591

DATE 2/12/2026

DRAWN BY dl

F.B./ PG. N/A

SCALE AS SHOWN

JOB NO. 9202-2

**WOODLAND TRAILS– UTILITY EASEMENT ABANDONMENT
 SKETCH OF DESCRIPTION**

LEGAL DESCRIPTION:

A 20 FOOT WIDE EASEMENT LYING IN TRACT "M", PORT. ST LUCIE SECTION THIRTY THREE, ACCORDING TO THE PLAT THEREOF, AS RECORDED IN PLAT BOOK 15, PAGE 1 OF THE PUBLIC RECORDS OF ST. LUCIE COUNTY, FLORIDA, BEING MORE PARTICULARLY DESCRIBED AS FOLLOWS:

COMMENCING AT THE SOUTHWEST CORNER OF SAID TRACT "M", THENCE NORTH 00°02'56" WEST ALONG THE WEST LINE OF SAID TRACT "M", A DISTANCE OF 8.00 FEET TO A POINT OF INTERSECTION WITH THE NORTH RIGHT-OF-WAY LINE OF BECKER ROAD, AS RECORDED IN OFFICIAL RECORD BOOK 3120, PAGE 1439 OF SAID PUBLIC RECORDS AND THE POINT OF BEGINNING; THENCE CONTINUING ALONG SAID WEST LINE NORTH 00°02'56". A DISTANCE OF 535.16 FEET TO THE NORTHWEST CORNER OF SAID TRACT "M"; THENCE NORTH 89°57'04" EAST ALONG THE NORTH LINE OF SAID TRACT "M", A DISTANCE OF 420.00 FEET TO A POINT OF INTERSECTION WITH THE WEST RIGHT-OF-WAY LINE OF PORT ST. LUCIE BOULEVARD, AS RECORDED IN OFFICIAL RECORD BOOK 3120, PAGE 1439 OF SAID PUBLIC RECORDS; THENCE SOUTH 00°02'56" EAST ALONG SAID WEST RIGHT-OF-WAY LINE, A DISTANCE OF 20.00 FEET TO A POINT OF INTERSECTION WITH THE SOUTH LINE OF SAID 20 FOOT WIDE EASEMENT; THENCE SOUTH 89°57'04" WEST ALONG SAID SOUTH LINE, A DISTANCE OF 400.00 FEET TO A POINT OF INTERSECTION WITH THE EAST LINE OF SAID 20 FOOT EASEMENT; THENCE SOUTH 00°02'56" EAST ALONG SAID EAST LINE, A DISTANCE OF 515.23 FEET TO A POINT OF INTERSECTION WITH AFORESAID NORTH RIGHT-OF-WAY LINE OF BECKER ROAD; THENCE NORTH 89°49'55" WEST ALONG SAID NORTH RIGHT-OF-WAY LINE, A DISTANCE OF 20.00 FEET TO THE POINT OF BEGINNING.

CONTAINING 18,704 SQUARE FEET OR 0.429 ACRES OF LAND, MORE OR LESS.

SUBJECT TO EASEMENTS, RESTRICTIONS, RESERVATIONS, COVENANTS, AND RIGHTS-OF-WAY OF RECORD.

SHEET 2 OF 5



CAULFIELD & WHEELER, INC.

CIVIL ENGINEERING
LANDSCAPE ARCHITECTURE – SURVEYING
7900 GLADES ROAD – SUITE 100
BOCA RATON, FLORIDA 33434
PHONE (561)-392-1991

DATE 2/12/2026

DRAWN BY dl

F.B./ PG. N/A

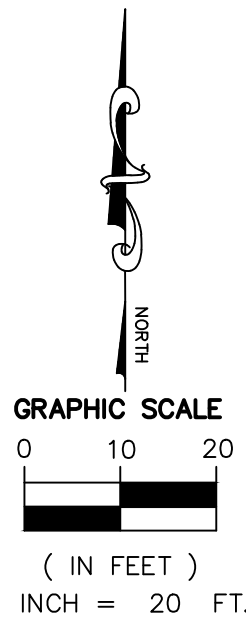
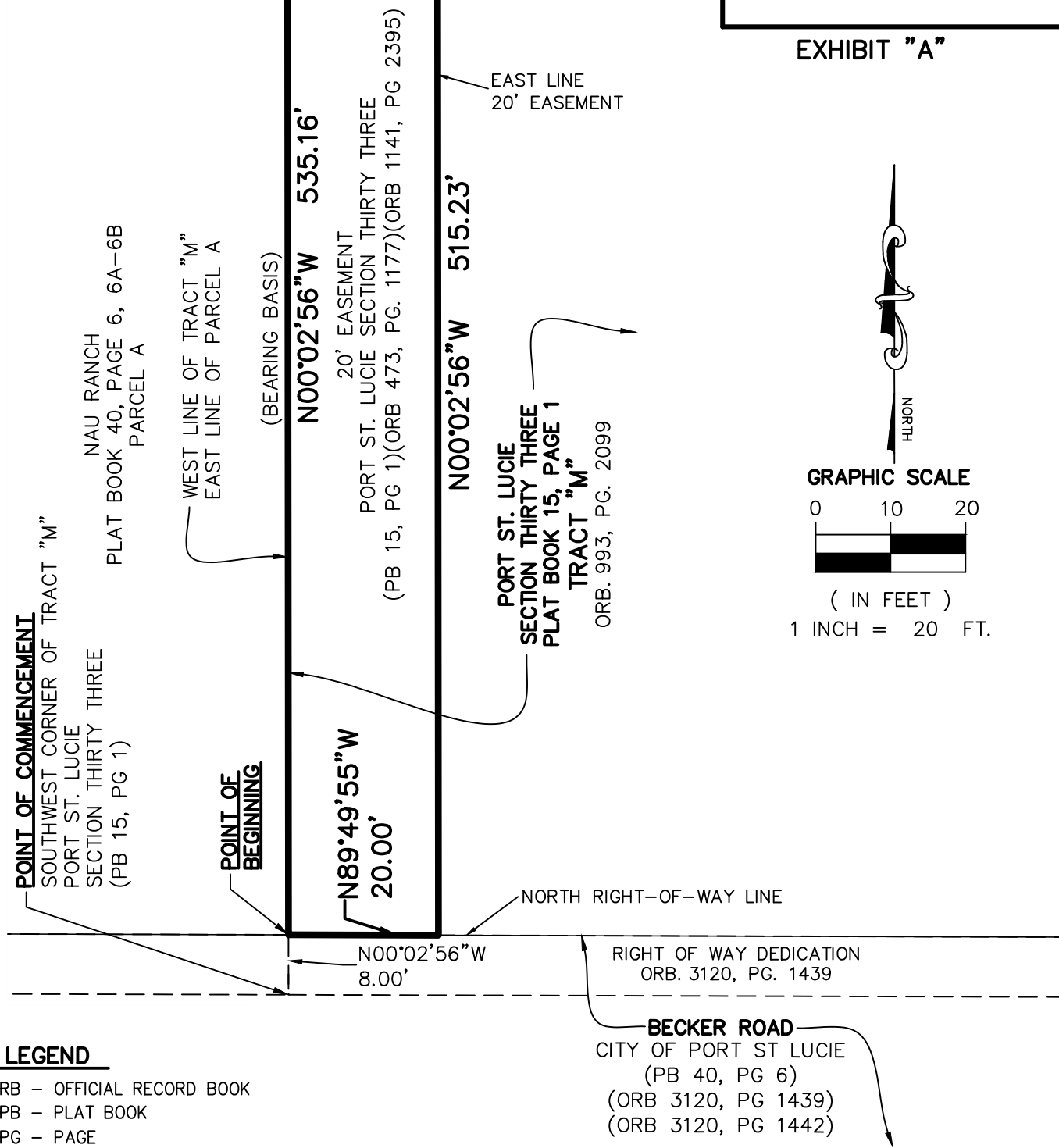
SCALE AS SHOWN

JOB NO. 9202-2

**WOODLAND TRAILS- UTILITY EASEMENT ABANDONMENT
SKETCH OF DESCRIPTION**

MATCHLINE—SEE SHEET 4

EXHIBIT "A"



LEGEND

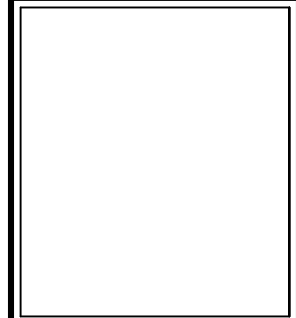
- ORB - OFFICIAL RECORD BOOK
- PB - PLAT BOOK
- PG - PAGE

BECKER ROAD
 CITY OF PORT ST LUCIE
 (PB 40, PG 6)
 (ORB 3120, PG 1439)
 (ORB 3120, PG 1442)

SHEET 3 OF 5

CAULFIELD & WHEELER, INC.
 CIVIL ENGINEERING
 LANDSCAPE ARCHITECTURE - SURVEYING
 7900 GLADES ROAD - SUITE 100
 BOCA RATON, FLORIDA 33434
 PHONE (561)-392-1991

**WOODLAND TRAILS— UTILITY EASEMENT ABANDONMENT
 SKETCH OF DESCRIPTION**



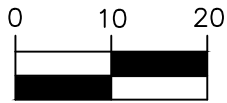
DATE	2/12/2026
DRAWN BY	dl
F.B./ PG.	N/A
SCALE	AS SHOWN
JOB NO.	9202-2

"Exhibit A"

EXHIBIT "A"



GRAPHIC SCALE



(IN FEET)

1 INCH = 20 FT.

NAU RANCH
PLAT BOOK 40, PAGE 6, 6A-6B
PARCEL A

NAU RANCH
PLAT BOOK 40, PAGE 6, 6A-6B
PARCEL B

WEST LINE OF TRACT "M"
EAST LINE OF PARCEL A

N00°02'56"W 535.16'

20' EASEMENT
PORT ST. LUCIE SECTION THIRTY THREE
(PB 15, PG 1)(ORB 473, PG. 1177)(ORB 1141, PG 2395)

S00°02'56"E 515.23'

PORT ST. LUCIE
SECTION THIRTY THREE
PLAT BOOK 15, PAGE 1
TRACT "M"
ORB. 993, PG. 2099

EAST LINE
20' EASEMENT

S89°57'04"W 400.00'

20' EASEMENT
PORT ST. LUCIE SECTION THIRTY THREE
(PB 15, PG 1)(ORB 1141, PG 2395)

NW CORNER
TRACT "M"

N89°57'04"E 420.00'

SOUTH LINE OF LOT 26
NORTH LINE OF TRACT "M"

10' DRAINAGE AND PUBLIC UTILITY EASEMENT
PORT ST. LUCIE SECTION THIRTY THREE
(PB 15, PG 1)

BLK 2284 LOT 26
PORT ST. LUCIE
SECTION THIRTY THREE
PLAT BOOK 15, PAGE 1

LEGEND

- ORB - OFFICIAL RECORD BOOK
- PB - PLAT BOOK
- PG - PAGE

MATCHLINE-SEE SHEET 3

MATCHLINE-SEE SHEET 5

SHEET 4 OF 5



CAULFIELD & WHEELER, INC.

CIVIL ENGINEERING
LANDSCAPE ARCHITECTURE - SURVEYING
7900 GLADES ROAD - SUITE 100
BOCA RATON, FLORIDA 33434
PHONE (561)-392-1991

DATE 2/12/2026

DRAWN BY dl

F.B./ PG. N/A

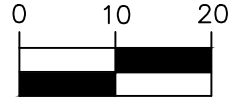
SCALE AS SHOWN

JOB NO. 9202-2

WOODLAND TRAILS- UTILITY EASEMENT ABANDONMENT
SKETCH OF DESCRIPTION

BLK 2284 LOT 29
PORT ST. LUCIE
SECTION THIRTY THREE
PLAT BOOK 15, PAGE 1

GRAPHIC SCALE



(IN FEET)
1 INCH = 20 FT.

MATCHLINE—SEE SHEET 4

6' DRAINAGE AND PUBLIC UTILITY EASEMENT
PORT ST. LUCIE SECTION THIRTY THREE (PB 15, PG 1)

SOUTH LINE OF LOT 29
NORTH LINE OF TRACT "M"

10' DRAINAGE AND PUBLIC UTILITY EASEMENT
PORT ST. LUCIE SECTION THIRTY THREE
(PB 15, PG 1)

6' DRAINAGE AND PUBLIC UTILITY EASEMENT
PORT ST. LUCIE SECTION THIRTY THREE (PB 15, PG 1)

RIGHT OF WAY DEDICATION
ORB. 3120, PG. 1436

N89°57'04"E 420.00'

S00°02'56"E
20.00'

20' EASEMENT
PORT ST. LUCIE SECTION THIRTY THREE
(PB 15, PG 1)(ORB 1141, PG 2395)

WEST LINE R/W

S89°57'04"W 400.00'

SOUTH LINE
20' EASEMENT

PORT ST. LUCIE
SECTION THIRTY THREE
PLAT BOOK 15, PAGE 1
TRACT "M"
ORB. 993, PG. 2099

RIGHT OF WAY DEDICATION
ORB. 3120, PG. 1439

PORT ST. LUCIE BLVD
PUBLIC RIGHT OF WAY VARIES
PORT ST. LUCIE
SECTION THIRTY THREE
PLAT BOOK 15, PAGE 1
ORB 3120, PG 1439



LEGEND

- ORB - OFFICIAL RECORD BOOK
- PB - PLAT BOOK
- PG - PAGE

SHEET 5 OF 5



CAULFIELD & WHEELER, INC.

CIVIL ENGINEERING
LANDSCAPE ARCHITECTURE - SURVEYING
7900 GLADES ROAD - SUITE 100
BOCA RATON, FLORIDA 33434
PHONE (561)-392-1991

DATE 2/12/2026

DRAWN BY dl

F.B./ PG. N/A

SCALE AS SHOWN

JOB NO. 9202-2

WOODLAND TRAILS- UTILITY EASEMENT ABANDONMENT
SKETCH OF DESCRIPTION