



Tradition Trail (Next phase) Discovery to E/W#2

City Council Special Meeting

April 19, 2021





Tradition Regional Park



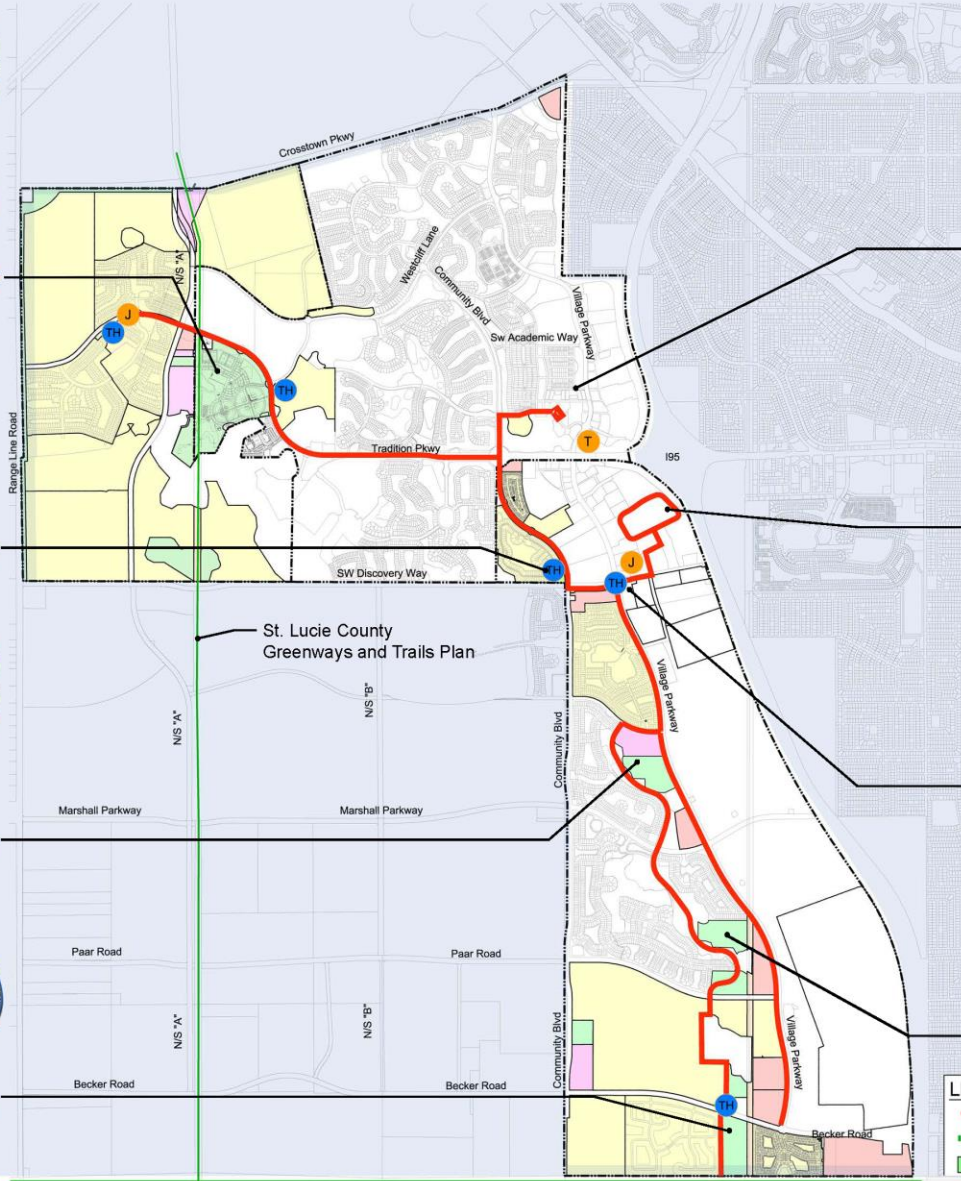
Talk in the Park



Stars and Stripes in the Park



SoGro in the Park



Tradition Town Center



WOW "Waterfront of Wellness"



Heart in the Park



Walk in the Park

LEGEND

- Trail
- St. Lucie County Greenways and Trails Plan
- City Parks

"Destinations"

- Trailhead
- Tradition "T" Digital Sign
- Jefre Iconic Art Statement Brand Identity
- TIM Stop
- Seating Area

lucido & associates
101 E. Ocean Blvd., Stuart, Florida 34994
(772) 226-2100, Fax (772) 223-6333

The T Trail

Tradition, City of Port St. Lucie
Experiences Map



The 'T' Trail – Experiences Master Plan



Community Blvd- Typical Section



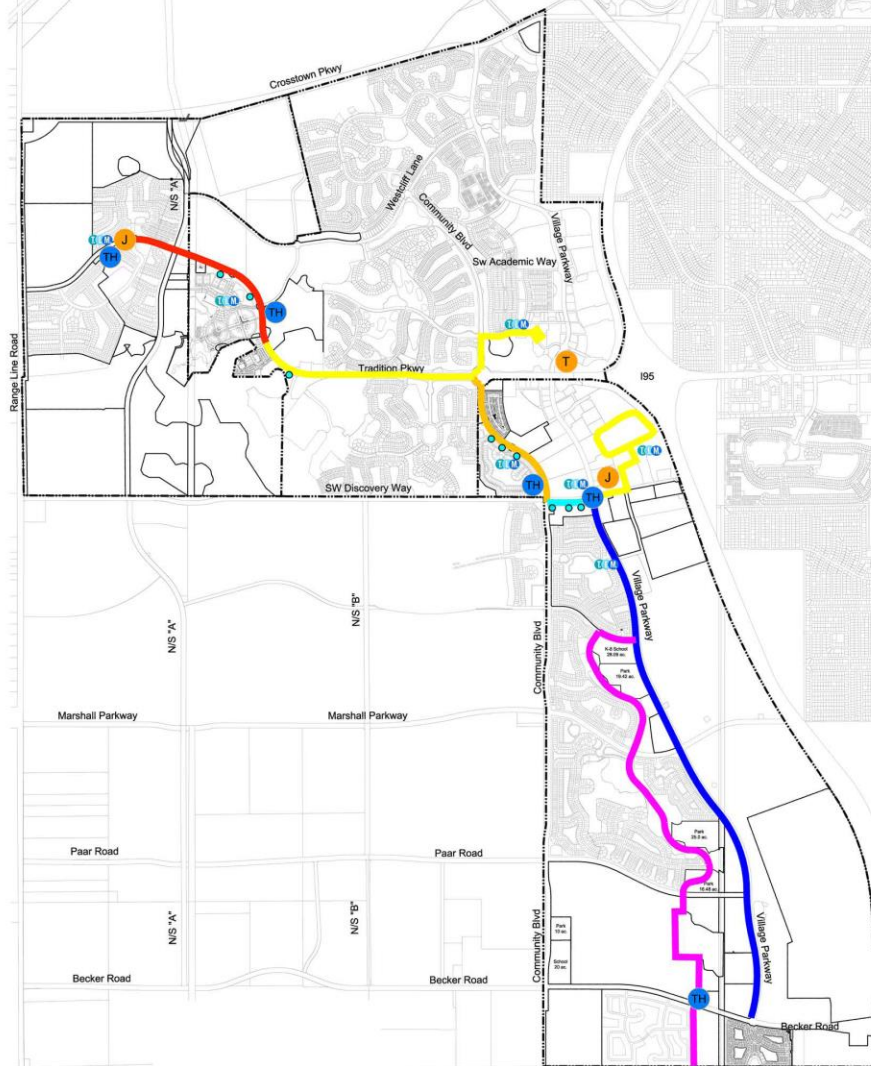
Discovery Way- Typical Section



Village Pkwy- Typical Section



Conservation Area- Typical Section



LEGEND

- Trail
- St. Lucie County Greenways and Trails Plan
- City Parks

"Destinations"

- Trailhead
- Tradition "T" Digital Sign
- Jefre Iconic Art Statement Brand Identity
- TIM Stop
- Seating Area

Tradition, City of Port St. Lucie
Master Trail Map

The Trail

Current and Next Phase of TRAIL

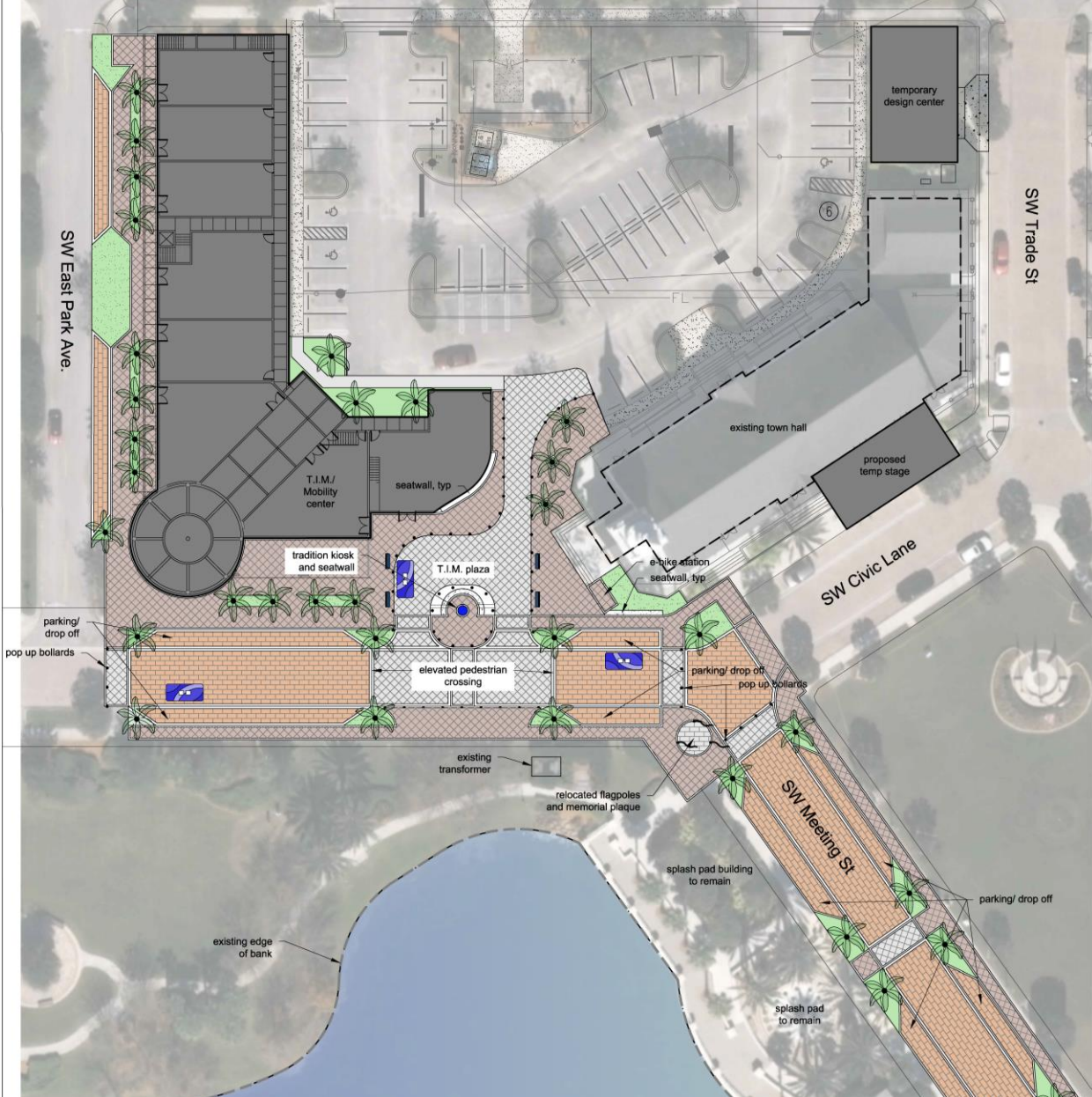


TRADITION

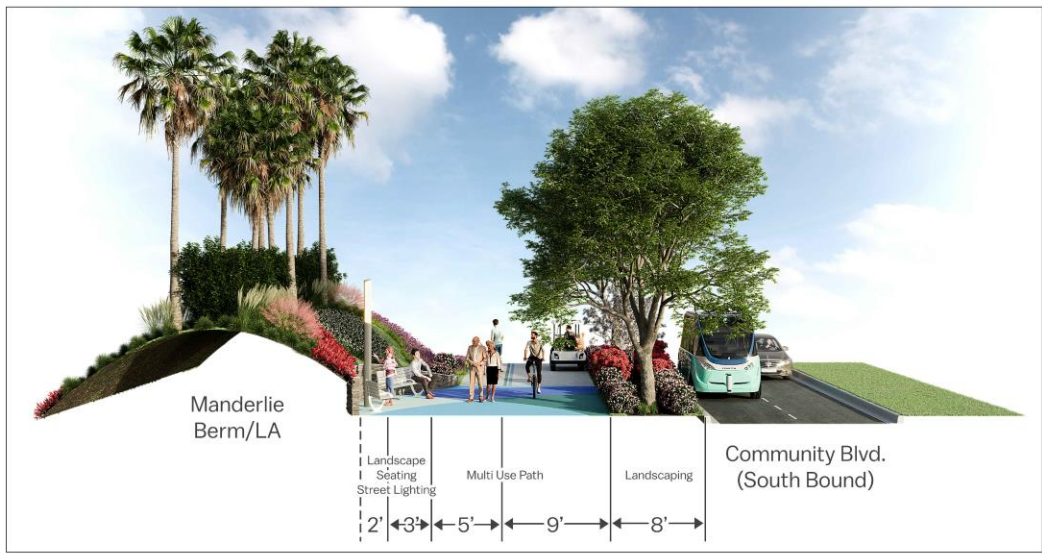
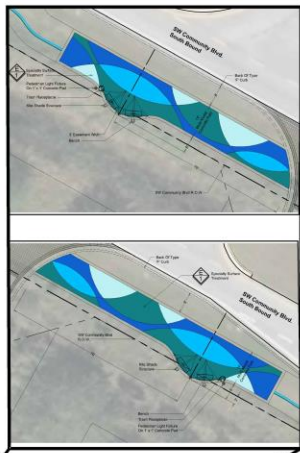
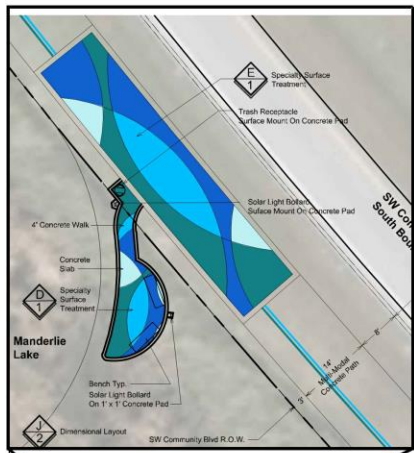


Kimley»Horn





Tradition Town and Mobility Center

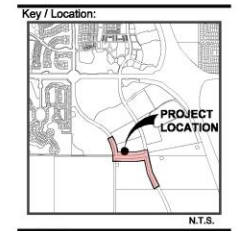


Manderlie Trailhead

Tradition, City of Port St. Lucie
Trailhead Experiences



Implemented "First Phase" of Trail



Project Team:



Client & Property Owner: Mattamy Homes, LLC
 1020 Gateway Blvd., Suite 200
 Boynton Beach, Florida 33426

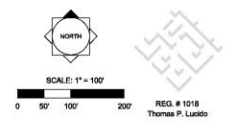
Land Planner / Landscape Architect: Lucido & Associates
 701 SE Ocean Boulevard
 Fort Lauderdale, Florida 33304

Engineer: Khney Ham
 448 5th Street, Suite 200
 Vero Beach, Florida 32909

Surveyor: Crawford & Wheeler, Inc.
 410 S.E. 1st St., Suite 200
 Fort St. Luke, Florida 33406

Mattamy Homes
T.I.M. Pathway
Discovery & Village Hardscape
 St. Lucie West, Florida
Plan View

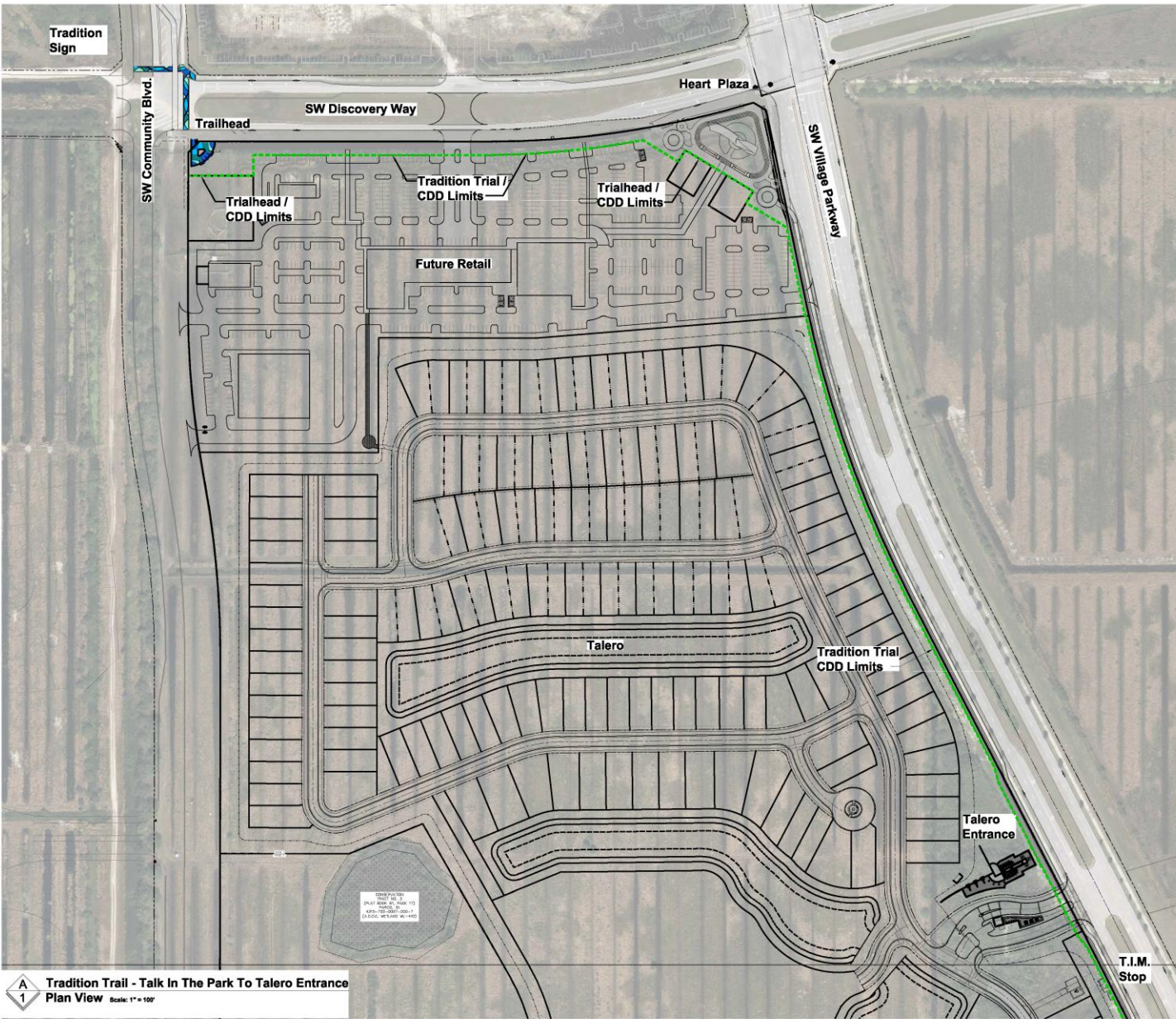
Date	By	Description
29MAR21	SJS	Client Review
07APR21	SJS	Client Review



Designer: SJS Sheet
 Manager: SG
 Project Number: 20-278.09
 Municipal Number: —
 Computer File: 20-278.07 - Discovery - Trailhead To Heart Plaza.dwg

1 of 5

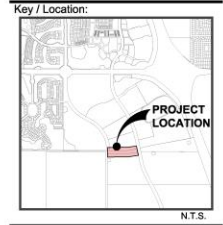
© Copyright Lucido & Associates. These documents and their contents are the property of Lucido & Associates. Any reproduction, misrepresentation, modification or use of these documents without the express written consent of Lucido & Associates is prohibited by law.




A
1
Tradition Trail - Talk In The Park To Talero Entrance
Plan View Scale: 1" = 100'



Next Phase of TRAIL - Overview



Project Team:

mattamy HOMES

Client & Property Owner: Mattamy Homes, LLC
 100 Mattamy Blvd., Suite 200
 Royal Beach, Florida 33420

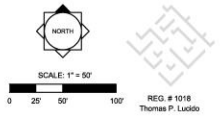
Land Planner / Landscape Architect: Lucido & Associates
 701 East Ocean Boulevard
 Fort Lauderdale, Florida 33304

Engineer: Kimley-Horn
 445 SW 1st Street, Suite 200
 West Beach, Florida 33500

Surveyor: Cadfield & Wheeler, Inc.
 410 S.E. Fort St. Lucie Blvd.
 Fort St. Lucie, Florida 34984

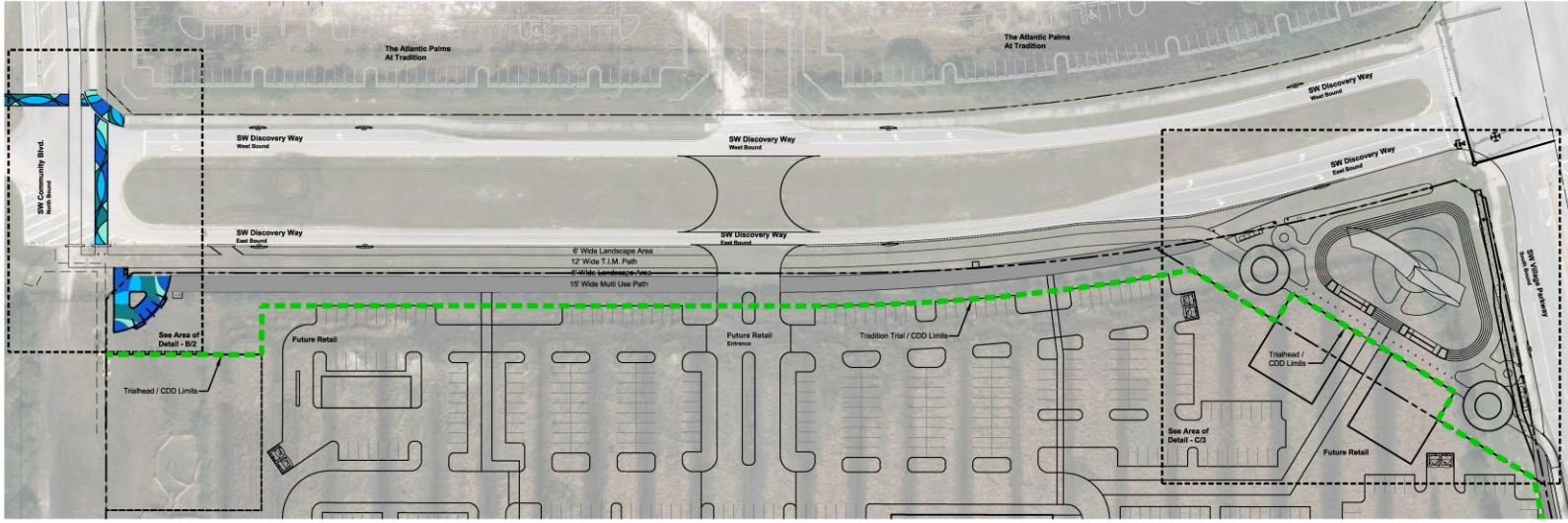
Mattamy Homes
T.I.M. Pathway
Discovery & Village
Hardscape
 St. Lucie West, Florida
Plan View

Date	By	Description
29MAR21	SJS	Client Review
07APR21	SJS	Client Review



Designer: SJS Sheet
 Manager: SG
 Project Number: 20-278.09 **2 of 5**
 Municipal Number: —
 Computer File: 20-278.07 - Discovery - Trailhead To Heart Plaza.dwg

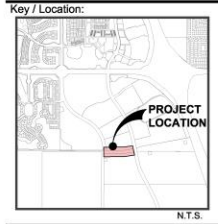
© Copyright Lucido & Associates. These documents and their contents are the property of Lucido & Associates. Any reproduction, retention, modification or use of these documents without the express written consent of Lucido & Associates is prohibited by law.



B2 Discovery Blvd. - Community Blvd To Village Parkway
 Plan View Scale: 1" = 50'



Next Phase of TRAIL – Discovery Way



Project Team:

mattamyHOMES

Client & Property Owner: Mattamy Homes, LLC
 100 Gateway Blvd., Suite 220
 Boynton Beach, Florida 33426

Land Planner / Landscape Architect: Lucido & Associates
 791 East Ocean Boulevard
 West Palm Beach, Florida 33411

Engineer: Kimley-Horn
 442 24th Street, Suite 200
 West Palm Beach, Florida 33411

Surveyor: Certified & Wheeler, Inc.
 415 S.E. First St. Lucie Blvd.
 Port St. Lucie, Florida 34984

Mattamy Homes
T.I.M. Pathway
Discovery & Village
Hardscape

St. Lucie West Florida
 Areas Of Detail

Date	By	Description
29MAR21	SJS	Client Review
07APR21	SJS	Client Review

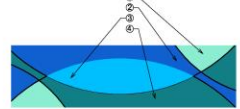
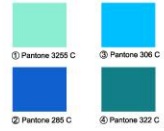


Designer	—	Sheet
Manager	—	3 of 5
Project Number	—	
Municipal Number	—	
Computer File	20-276.07 - Discovery - Trailhead To Heart File	

© Copyright Lucido & Associates. These documents and their contents are the property of Lucido & Associates. Any reproduction, revision, modification or use of these documents without the express written consent of Lucido & Associates is prohibited by law.



Pantone Color Specifications



See Paveway Systems Color Specifications Chart This Sheet

Typical Specialty Surface Color Selection
Plan View Scale: 1" = 10'

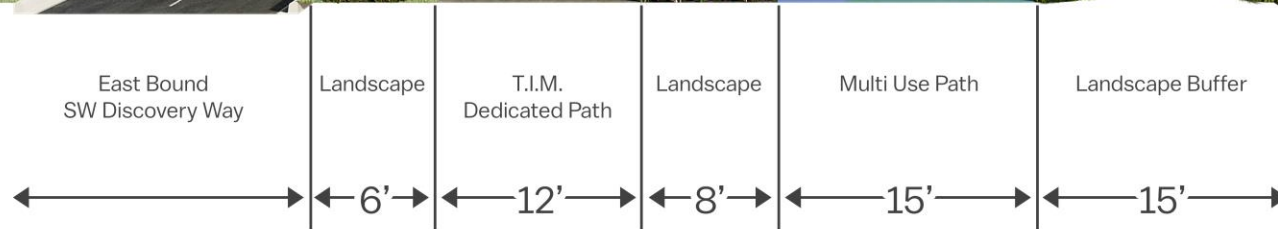
Hardscape General Notes

1. ALL DIMENSIONS TO BE FIELD VERIFIED
2. ALL MECHANICAL DETAILS PROVIDED BY OTHERS
3. STRUCTURAL & PERMIT DRAWINGS TO BE PROVIDED BY OTHERS
4. SEE CIVIL ENGINEER'S PLANS FOR ALL UTILITIES
5. ALL HARDSCAPE ITEMS TO BE INSTALLED PER MANUFACTURE SPECIFICATIONS
6. ALL ITEMS TO BE INSTALLED PER LOCAL AND STATE BUILDING CODES
7. ALL DESIGN DETAILS PROVIDED AS A CONVENIENCE TO CONTRACTOR TO CONVEY DESIGN INTENT

Discovery Boulevard - Community Blvd.
Seating Area
Plan View Scale: 1" = 20'



Community/Discovery Intersection



Tradition Trail Cross Section
 SW DISCOVERY WAY EAST BOUND WEST OF SW VILLAGE PARKWAY



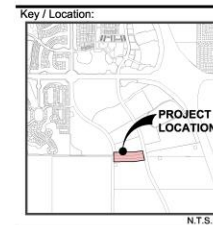
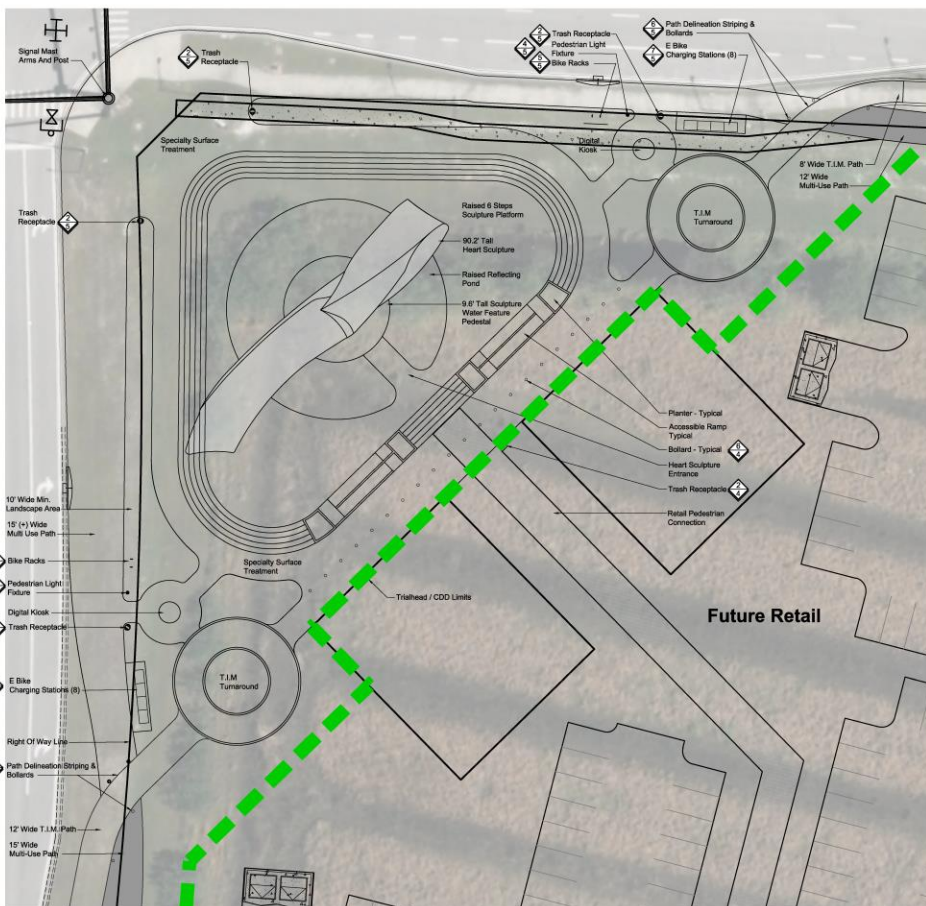
TRADITION



Kimley»Horn



TRAIL Cross-sections



Project Team:

mattamyHOMES

Client & Property Owner: Mattamy Homes, LLC
 1000 Gateway Blvd, Suite 220
 Boynton Beach, Florida 33426

Land Planner / Landscape Architect: Lucido & Associates
 771 East Owen Boulevard
 Fort. Lauderdale, Florida 33304

Engineer: Kimley-Horn
 442 24th Street, Suite 200
 Vero Beach, Florida 32959

Surveyor: Certified & Wheeler, Inc.
 413 S.E. First St. Suite 300
 Fort St. Louis, Florida 34894

**Mattamy Homes
 T.I.M.
 Pathway
 Discovery & Village
 Hardscape**

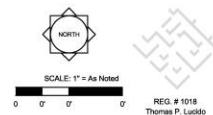
St. Lucie West Florida
 Areas Of Detail

Date	By	Description
29MAR21	SJS	Client Review
07APR21	SJS	Client Review

Hardscape General Notes

1. ALL DIMENSIONS TO BE FIELD VERIFIED
2. ALL MECHANICAL DETAILS PROVIDED BY OTHERS
3. STRUCTURAL & PERMIT DRAWINGS TO BE PROVIDED BY OTHERS
4. SEE CIVIL ENGINEERS PLANS FOR ALL UTILITIES
5. ALL HARDSCAPE ITEMS TO BE INSTALLED PER MANUFACTURE SPECIFICATIONS
6. ALL ITEMS TO BE INSTALLED PER LOCAL AND STATE BUILDING CODES
7. ALL DESIGN DETAILS PROVIDED AS A CONVENIENCE TO CONTRACTOR TO COVEY DESIGN INTENT

**Discovery Boulevard - Community Blvd.
 Trail Head - Heart Sculpture
 Plan View** Scale: 1" = 20'



Designer: — Sheet
 Manager: —
 Project Number: —
 Municipal Number: —
 Computer File: 20-276.07 - Discovery - Trailhead To Heart Pic

4 of 5

© Copyright Lucido & Associates. These documents and their contents are the property of Lucido & Associates. Any reproduction, misuse, modification or use of these documents without the express written consent of Lucido & Associates is prohibited by law.

Mattamy Homes is a registered trademark of Mattamy Homes. Lucido & Associates is a registered trademark of Lucido & Associates. Kimley-Horn is a registered trademark of Kimley-Horn. © 2021 Lucido & Associates. All rights reserved.



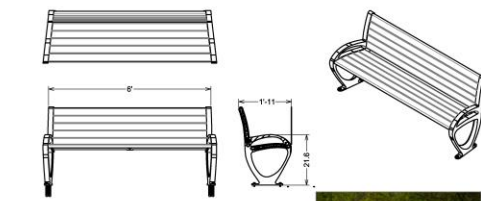
Heart in the Park – Tradition Trail



Tradition Trail Cross Section
Village Parkway



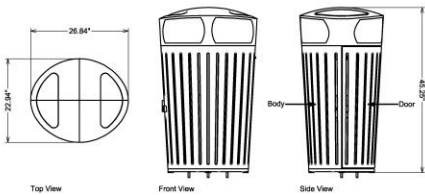
TRAIL Cross-sections



FORMS+SURFACES 30 The Street, Westborough, PA 15389 717.838.4100 FAX 717.838.4101 WWW.FORMSANDSURFACES.COM		MODEL: SBTRO-72B DATE: 01/18/2018 DRAWN: JLB CHECKED: JLB CDR:	DESCRIPTION: BACKED TRIO BENCH
DO NOT SCALE DRAWING			
SHEET: SBTRO-72B-CS PROJECT: TRADITION TRAIL AMENITIES SCALE: 1/8" = 1'-0"	DATE: 01/18/2018 DRAWN: JLB CHECKED: JLB CDR:	SHEET NO: 800 TOTAL SHEETS: 1001	TYP: 1 OF 1



1 **Trio 6' Backed Bench** Scale: NTS
 Material: Aluminum
 Finish: Clear Anodized Aluminum



FORMS+SURFACES 30 The Street, Westborough, PA 15389 717.838.4100 FAX 717.838.4101 WWW.FORMSANDSURFACES.COM		MODEL: SBTRO-45-3N-10 DATE: 01/18/2018 DRAWN: JLB CHECKED: JLB CDR:	DESCRIPTION: SURFACE MOUNT DISPATCH RECEPTACLE 45 GALLON
DO NOT SCALE DRAWING			
SHEET: SBTRO-45-3N-10 PROJECT: TRADITION TRAIL AMENITIES SCALE: 1/8" = 1'-0"	DATE: 01/18/2018 DRAWN: JLB CHECKED: JLB CDR:	SHEET NO: 800 TOTAL SHEETS: 1001	TYP: 1 OF 1

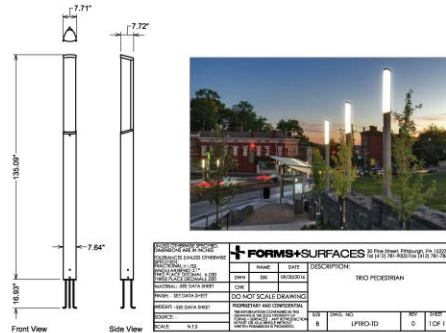


2 **Trash Receptacle** Scale: NTS

2 **Dispatch Trash Receptacle** Scale: NTS
 Style: Split Stream (Litter / Recycling)

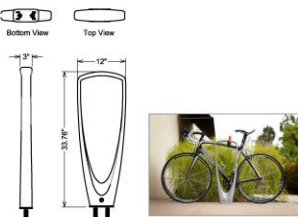


3 **Pet Waste Station** Scale: NTS
 Retrifier City
 Fixing Option: Ground Lock
 Finish: Aluminum
 Color: Deep Green/Anthracite Gray/Black



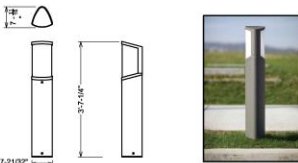
FORMS+SURFACES 30 The Street, Westborough, PA 15389 717.838.4100 FAX 717.838.4101 WWW.FORMSANDSURFACES.COM		MODEL: SBTRO-ID DATE: 01/18/2018 DRAWN: JLB CHECKED: JLB CDR:	DESCRIPTION: TRIO PEDESTRIAN LIGHT FIXTURE
DO NOT SCALE DRAWING			
SHEET: SBTRO-ID PROJECT: TRADITION TRAIL AMENITIES SCALE: 1/8" = 1'-0"	DATE: 01/18/2018 DRAWN: JLB CHECKED: JLB CDR:	SHEET NO: 800 TOTAL SHEETS: 1001	TYP: 1 OF 1

4 **Trio Pedestrian Light Fixture** Scale: NTS
 Style: Trio
 Texture: Aluminum



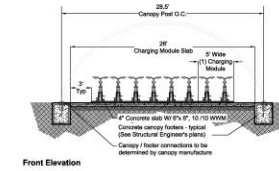
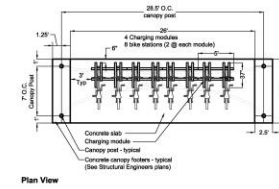
FORMS+SURFACES 30 The Street, Westborough, PA 15389 717.838.4100 FAX 717.838.4101 WWW.FORMSANDSURFACES.COM		MODEL: SBTRO-ID DATE: 01/18/2018 DRAWN: JLB CHECKED: JLB CDR:	DESCRIPTION: TRIO BIKE RACK
DO NOT SCALE DRAWING			
SHEET: SBTRO-ID PROJECT: TRADITION TRAIL AMENITIES SCALE: 1/8" = 1'-0"	DATE: 01/18/2018 DRAWN: JLB CHECKED: JLB CDR:	SHEET NO: 800 TOTAL SHEETS: 1001	TYP: 1 OF 1

5 **Trio Bike Rack** Scale: NTS
 Style: Trio

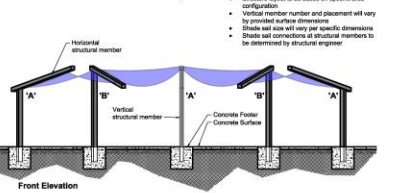
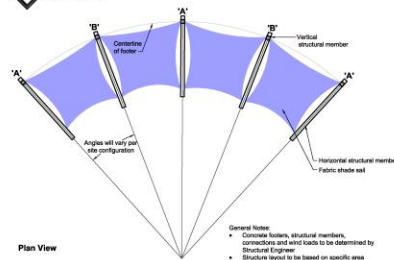


FORMS+SURFACES 30 The Street, Westborough, PA 15389 717.838.4100 FAX 717.838.4101 WWW.FORMSANDSURFACES.COM		MODEL: SBTRO-ID DATE: 01/18/2018 DRAWN: JLB CHECKED: JLB CDR:	DESCRIPTION: TRIO BOLLARD
DO NOT SCALE DRAWING			
SHEET: SBTRO-ID PROJECT: TRADITION TRAIL AMENITIES SCALE: 1/8" = 1'-0"	DATE: 01/18/2018 DRAWN: JLB CHECKED: JLB CDR:	SHEET NO: 800 TOTAL SHEETS: 1001	TYP: 1 OF 1

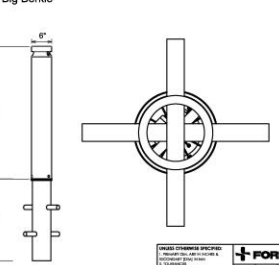
6 **Trio Bollard** Scale: NTS
 Style: Trio
 Texture: Aluminum (To Match Pedestrian Light Fixture)



7 **E-Bike Charging Station** Scale: NTS
 8 Stations



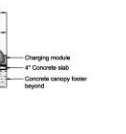
8 **5 Post Berkie** Scale: NTS
 Big Berkie



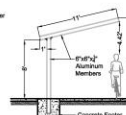
6 **Helio Bollard** Scale: NTS
 Style: Helio 600
 Texture: Stainless Steel

General Notes:

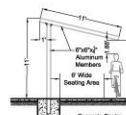
- E-Bike charging modules must be installed per manufacturer specifications
- Four - module (2 bikes per module)
- Each module has 2 battery chargers
- Each charger requires 2 amp power (4 amp total per module - 16 amps / 8 bikes - 2.15 amp availability)
- Each module is 37" deep x 67" wide
- E-Bike dimensions: 12" long x 40" tall x 30" wide
- Attach charging modules to wall per manufacturer's specifications
- If mounting charging modules on concrete, wall thickness must be used
- See Structural Engineer's plans for concrete module and design loads
- See Structural Engineer's plans for structural members, connector and fasteners
- E-Bike charging station layout to be based on specific area configuration



Section



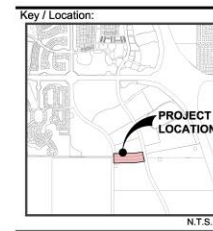
Side Elevation Detail 'A'



Side Elevation Detail 'B'

General Notes:

- Concrete fasteners, structural members, connections and wind loads to be determined by Structural Engineer
- Structure layout to be based on specific area configuration
- Vertical member number and placement will vary to provide for field dimensions
- Shade sail shall not vary per specific dimensions
- Shade sail connections at structural members to be determined by structural engineer



Project Team:



Client & Property Owner: Mattamy Homes, LLC
 1500 Gateway Blvd, Suite 220
 Boynton Beach, Florida 33426

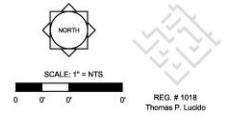
Land Planner / Landscape Architect: Lucido & Associates
 791 East Ocean Boulevard
 Stuart, Florida 34984

Engineer: Kimley-Horn
 442 24th Street, Suite 200
 Vero Beach, Florida 32909

Surveyor: Carlisle & Whelan, Inc.
 410 S.E. Port St. Lucie Blvd.
 Port St. Lucie, Florida 34952

Mattamy Homes
Tradition Trail Amenities
Discovery & Village
 St. Lucie West, Florida
Site Furnishings

Date	By	Description
29MAR21	SJS	Submit
07APR21	SJS	Submit

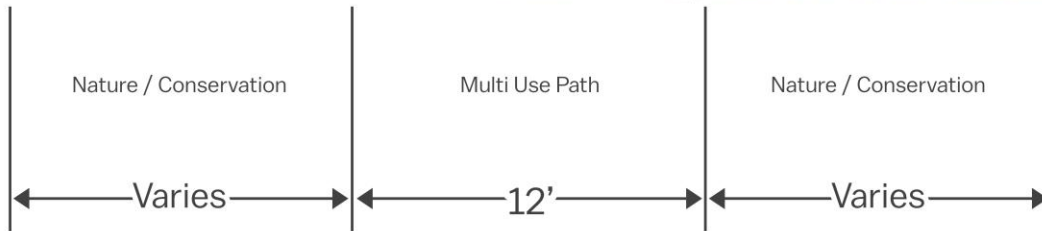


Designer	—	Sheet
Manager	—	5 of 5
Project Number	—	
Municipal Number	—	
Computer File	20-278-07 - Discovery - Trailhead To Heart Pln	

© Copyright Lucido & Associates. These documents and their contents are the property of Lucido & Associates. Any reproduction, copying, modification or use of these documents without the express written consent of Lucido & Associates is prohibited by law.



Art in the Park – Tradition Trail



Tradition Trail Cross Section
CONSERVATION AREA PATHS



TRADITION



Kimley»Horn



TRAIL Cross-sections