

Key / Location:

PROJECT LOCATION

Port St. Lucie Blvd
 US Highway 1
 Mobile Parcel
 Concession Trail

Not to Scale

Project Team:



**Westmoreland Riverwalk
 Details & Specifications**
 Port St. Lucie, Florida
 Owner/Developer: City of Port St. Lucie
 P17-004

Date	By	Description
5.3.17	KV	Initial Submittal
6.7.17	KV	Resubmittal

NORTH

SCALE: 1" = NTS

0 0 0 0

REG. # 1018
 Thomas P. Lucido

Designer	KV	Sheet
Manager	SDG	HS-7
Project Number	16-230	
Municipal Number	-----	
Computer File	16-230 Westmoreland Hardscape.dwg	

© Copyright Lucido & Associates. These documents and their contents are the property of Lucido & Associates. Any reproductions, revisions, modifications or use of these documents without the express written consent of Lucido & Associates is prohibited by law.

A BENCH

-SCALE: 1/2" = 1'-0"
 -QUANTITY: 44
 -MANUFACTURER: WABASH VALLEY
 -MODEL: BU1112C
 -SPECIFICATIONS: 6' LENGTH, FAUX-WOOD, SURFACE MOUNT, WHEAT BENCH COLOR, HUNTER FRAME COLOR
 -INSTALLATION: SURFACE MOUNT, REFER TO MANUFACTURER'S SPECS

B PICNIC TABLE

-SCALE: 1/2" = 1'-0"
 -QUANTITY: 3
 -MANUFACTURER: WABASH VALLEY
 -MODEL: KE2532S
 -SPECIFICATIONS: 7' LENGTH, FAUX-WOOD, SURFACE MOUNT, WHEAT BENCH COLOR, HUNTER FRAME COLOR
 -INSTALLATION: SURFACE MOUNT, REFER TO MANUFACTURER'S SPECS

C BIKE RACK

-SCALE: NTS
 -QUANTITY: 2
 -MANUFACTURER: PILOT ROCK
 -MODEL: SRP SADDLEBACK BIKE RACK
 -SPECIFICATIONS: 7 BIKES- 62" LENGTH, GREEN COLOR
 -MOUNT: SURFACE MOUNT (MODEL ANC3-4 SCREW ANCHORS)
 -INSTALLATION: SURFACE MOUNT, REFER TO MANUFACTURER'S SPECS

E LIGHT FIXTURE

-QUANTITY: 67
 -MANUFACTURER: BEACON
 -FIXTURE: MRDS 26" DEEP SHADE, GREEN
 -ARM: AA-38 LARGE PIERWALK, GREEN
 -BASE: 16" BASE COVER MERS, GREEN
 -POLE: TO MATCH SOUTH BEND POLE
 -INSTALLATION: REFER TO MANUFACTURER'S SPECS

D PET WASTE STATION

-SCALE: NTS
 -QUANTITY: 6
 -MANUFACTURER: DOGWASTEDEPOT.COM
 -MODEL: DEPOT 404-B W/ TIE-HANDLE BAG SYSTEM
 -COLOR: GREEN
 -INSTALLATION: REFER TO MANUFACTURER'S SPECS

F WASTE RECEPTACLE

-SCALE: 1/2" = 1'-0"
 -QUANTITY: 25
 -MANUFACTURER: KEYSTONE RIDGE
 -MODEL: MIDTOWN DUAL RECYCLE / LITTER (MT3-32DRT)
 -COLOR: EVERGREEN
 -INSTALLATION: SURFACE MOUNT, REFER TO MANUFACTURER'S SPECS

G PAVILION

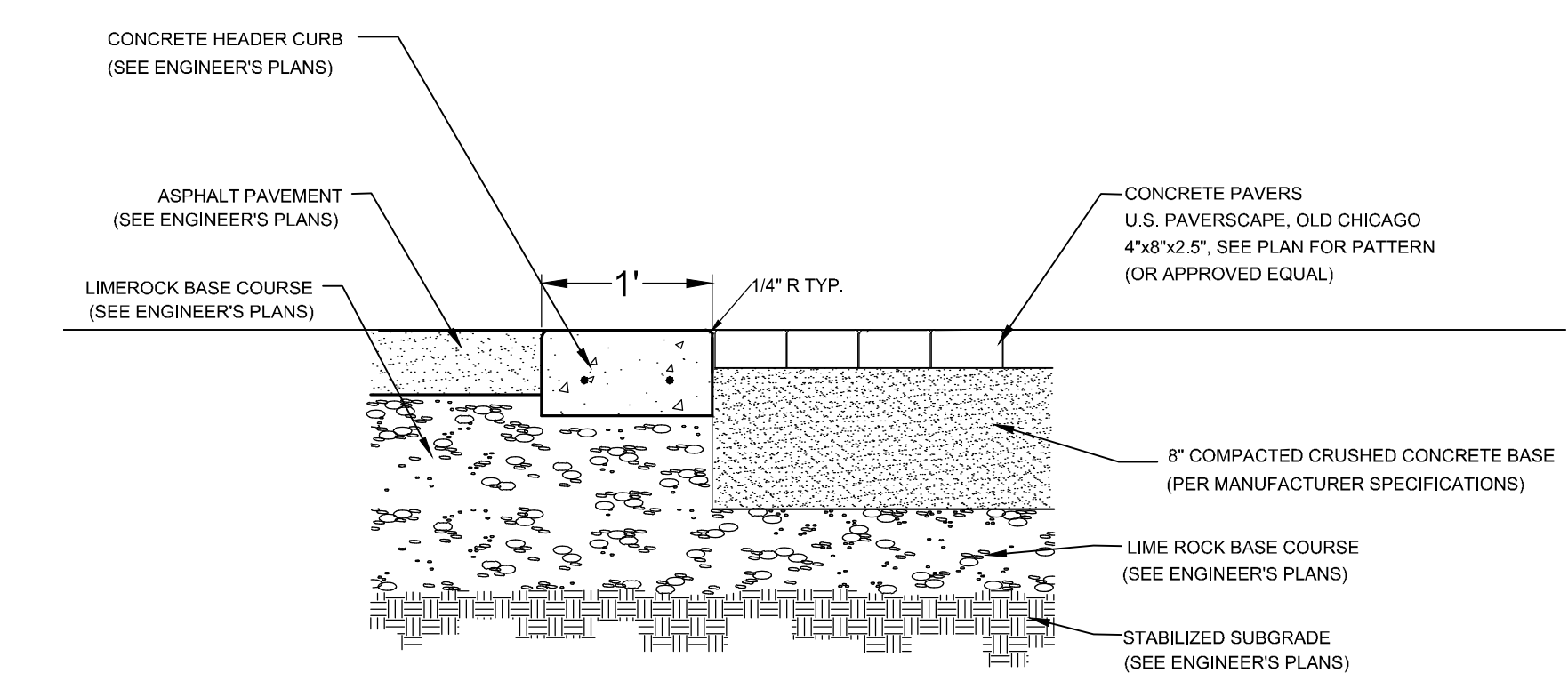
-SCALE: 1/2" = 1'-0"
 -MANUFACTURER: RCP, LW-HEX20-04
 -QUANTITY: 3

H CONSERVATION PAVILION

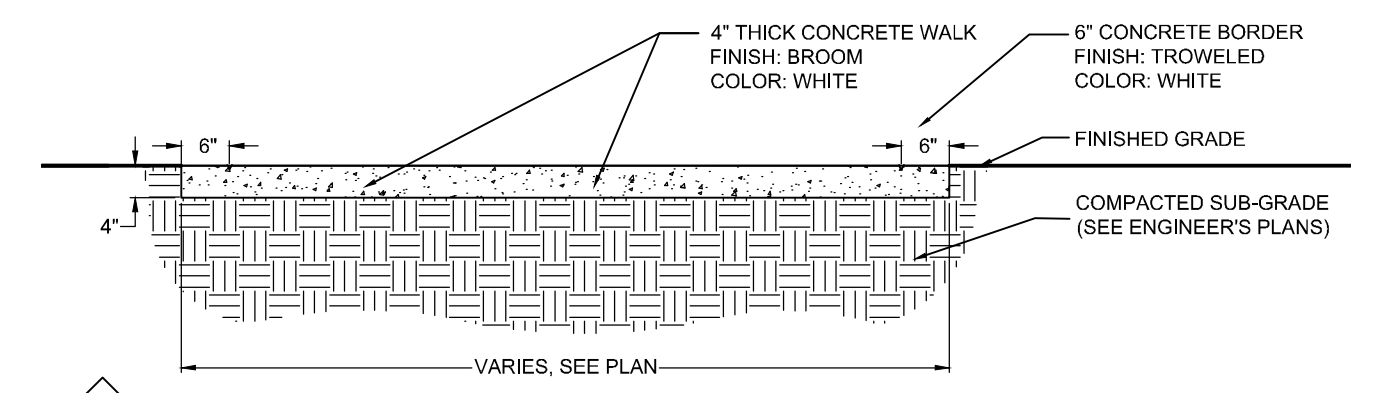
-SCALE: 1/2" = 1'-0"
 -MANUFACTURER: RCP, LW-HEX24-04
 -QUANTITY: 1



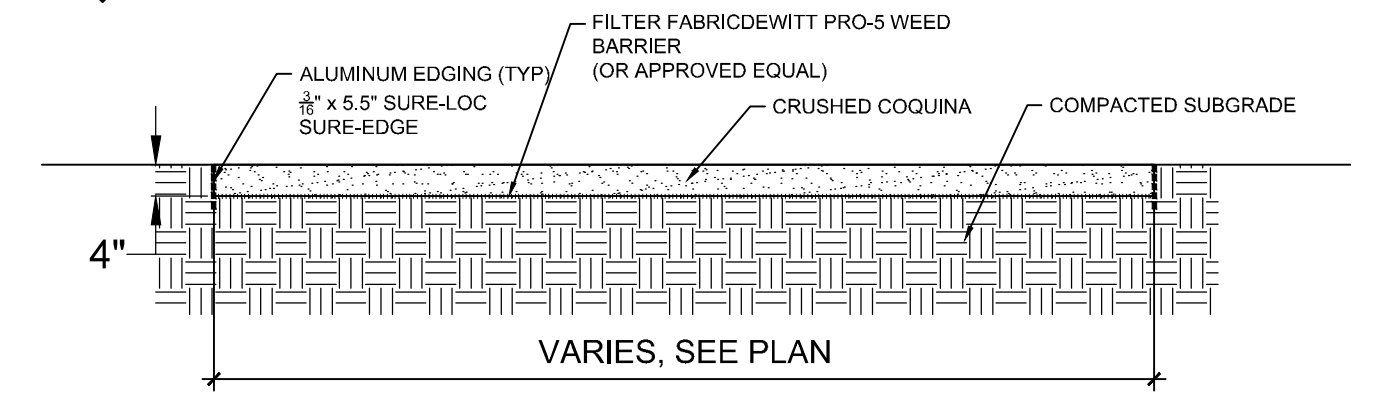
I PAVEWAY SYSTEMS STS- CONCRETE INFUSED AGGREGATE
 -NO PATTERN, NO BORDER



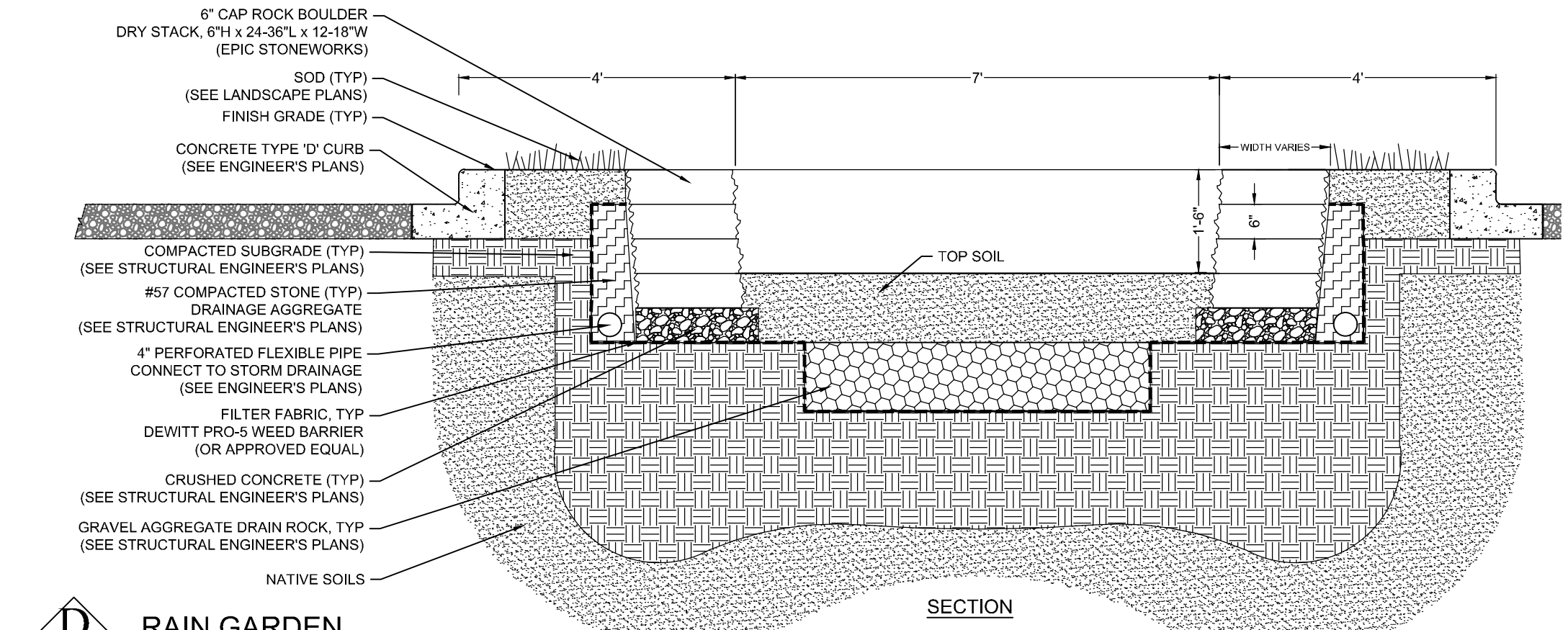
A
8 PAVER DETAIL
 -SCALE: 1" = 1'-0"



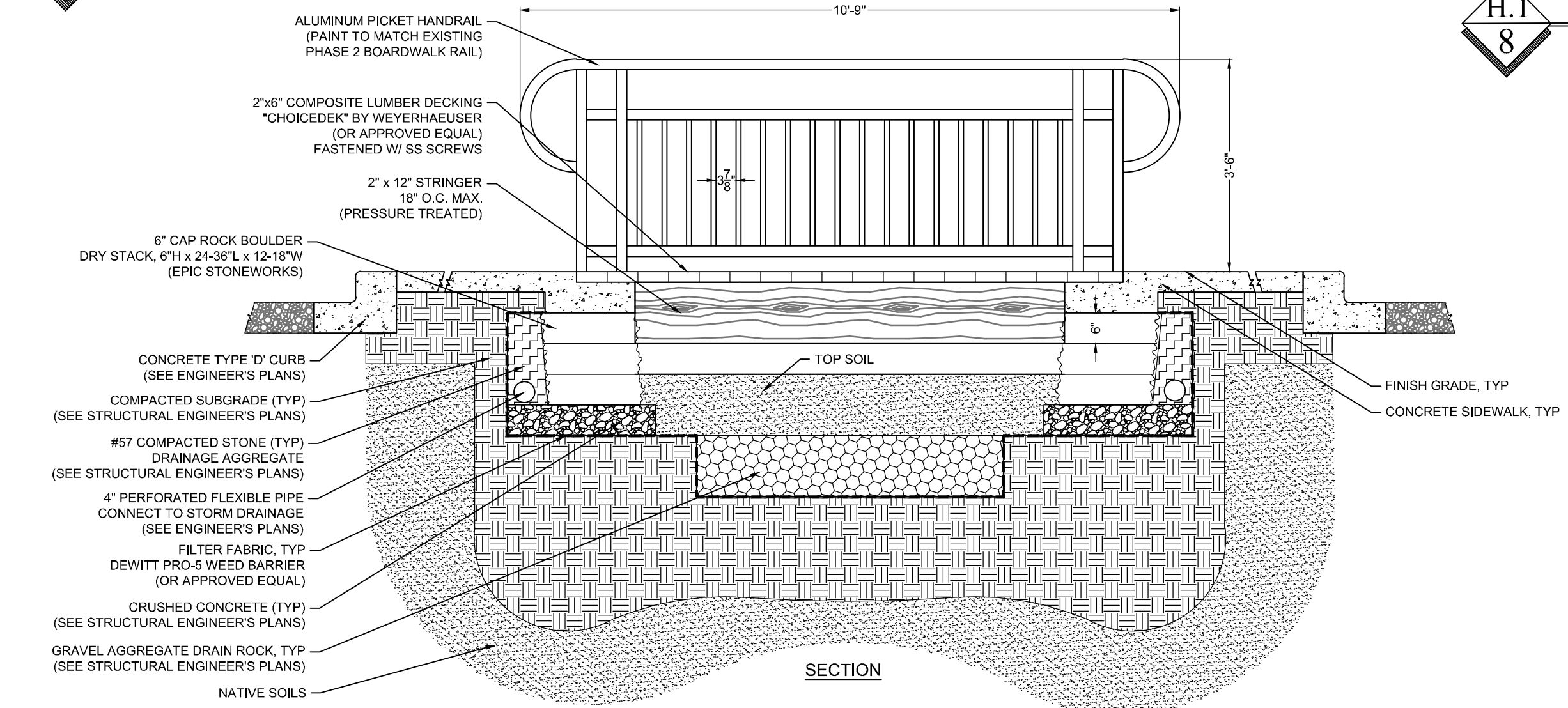
B
8 SIDEWALK
 -SCALE: 1/2" = 1'-0"



C
8 CRUSHED COQUINA PATH
 -SCALE: 1/2" = 1'-0"



D
8 RAIN GARDEN
 -SCALE: 1/2" = 1'-0"



E
8 RAIN GARDEN CROSSING
 -SCALE: 1/2" = 1'-0"

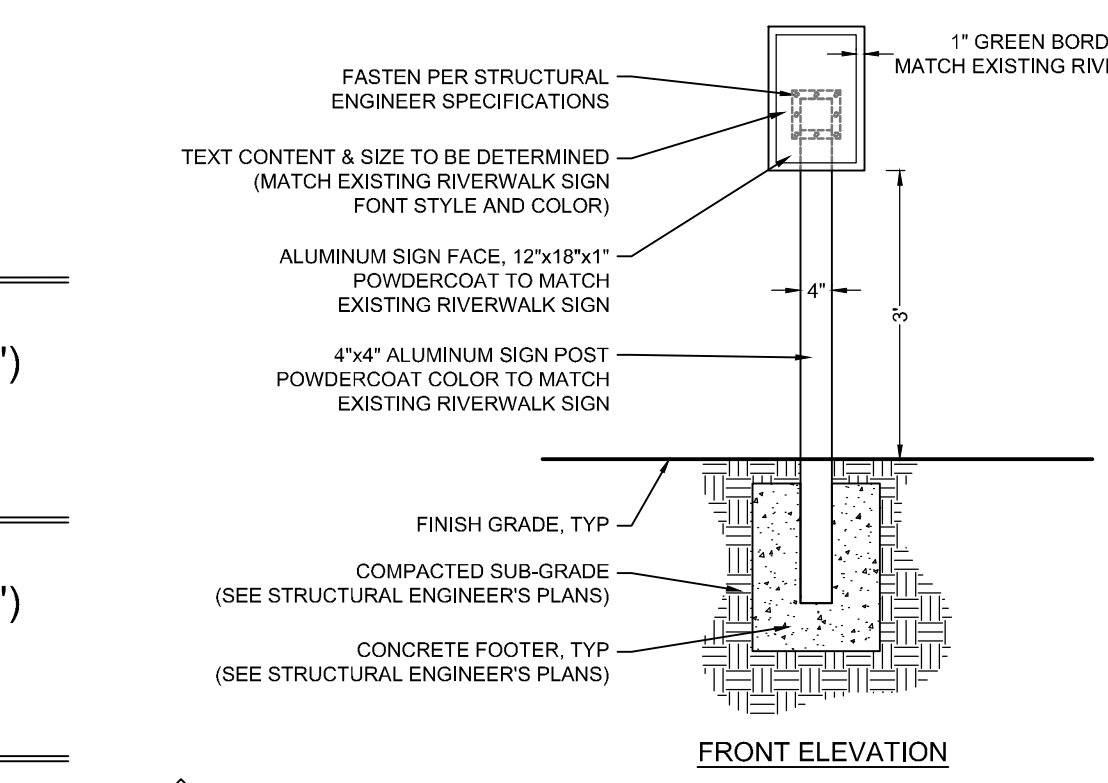


A.1
8 PAVER SPECIFICATION
 -U.S. PAVERSCAPE
 -OLD CHICAGO (4"x8"x2.5")
 -RADIAL PATTERN

A.2
8 PAVER SPECIFICATION
 -U.S. PAVERSCAPE
 -OLD CHICAGO (4"x8"x2.5")
 -DOUBLE BAND

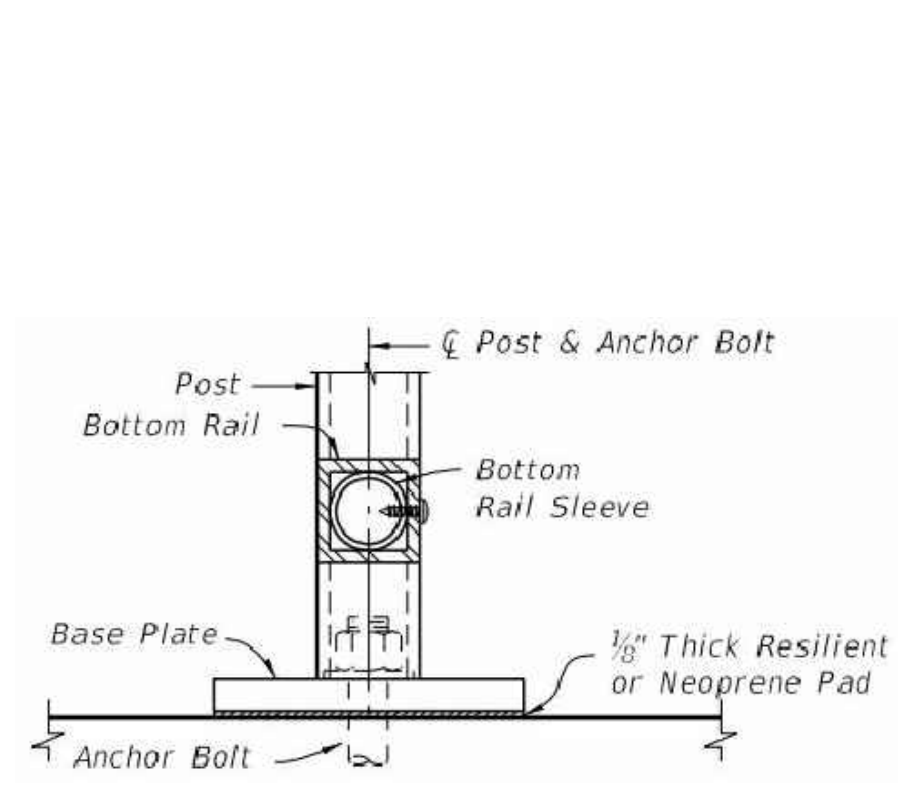
A.3
8 PAVER SPECIFICATION
 -U.S. PAVERSCAPE
 -OLD CHICAGO (4"x8"x2.5")
 -HERRINGBONE 90°
 NOTE: PAVING PATTERN TO MATCH THAT OF THE BOTANICAL GARDEN.

F
8 INTERPRETIVE SIGNAGE
 -QUANTITY: 13

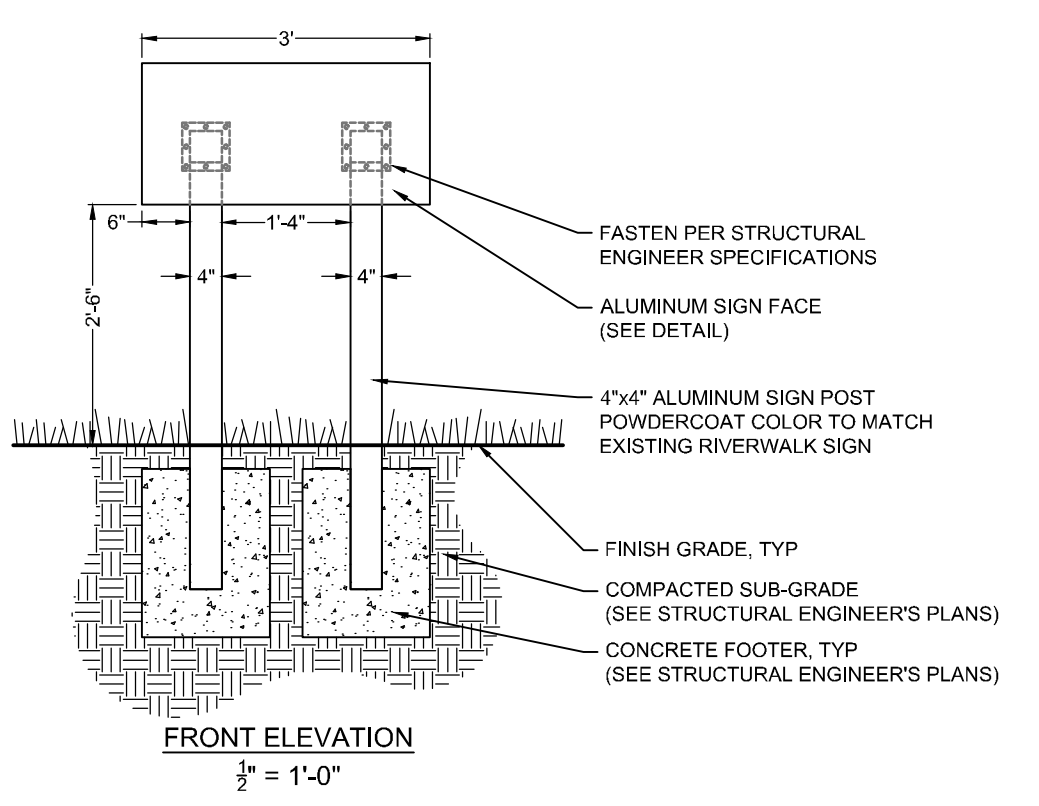


G
8 DIRECTIONAL SIGNAGE
 -SCALE: 1/2" = 1'-0"
 -QUANTITY: 12

H.1
8 TERRACED SEATING WALL - SECTION
 -SCALE: 1/2" = 1'-0"

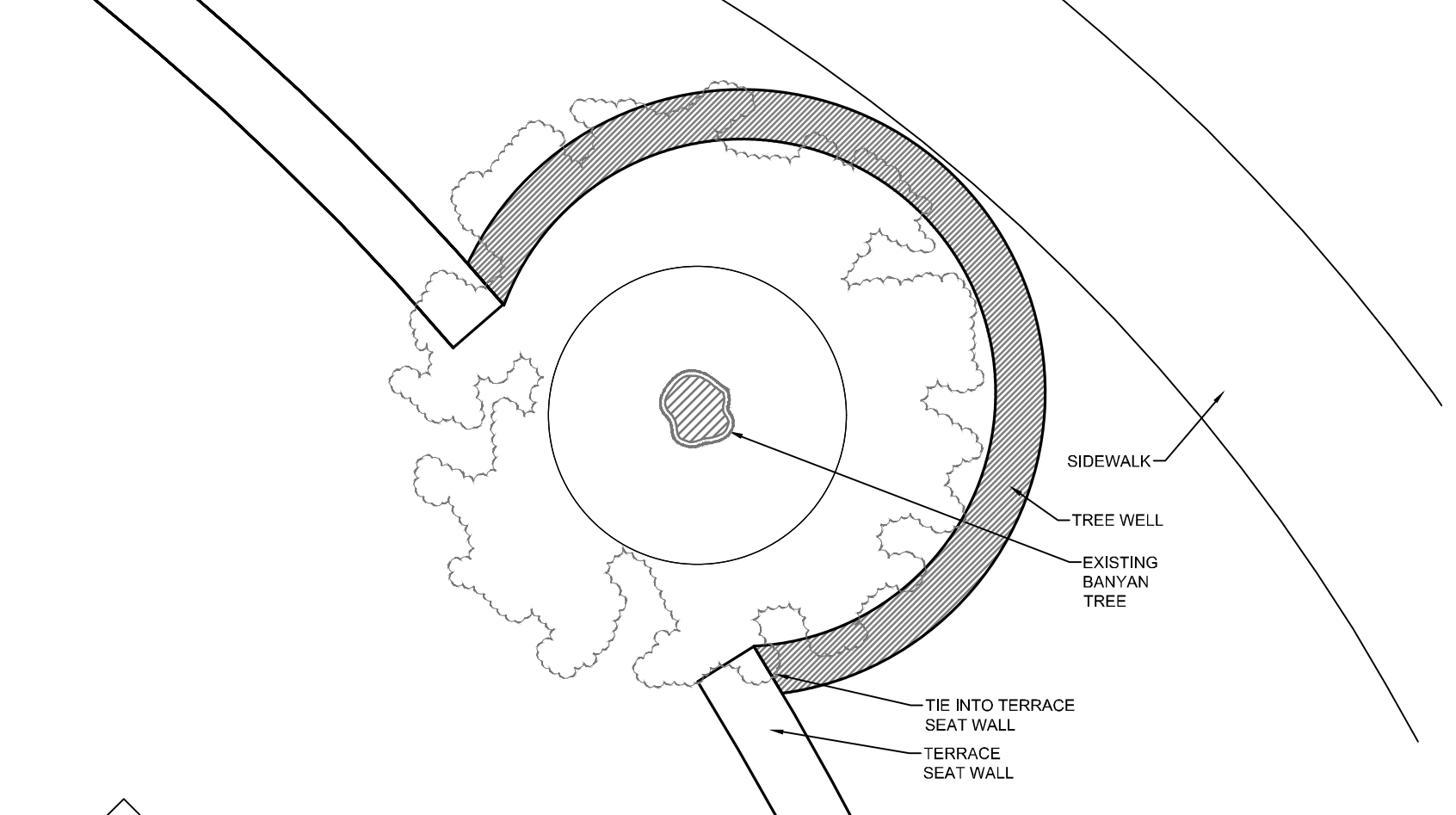


RAIL MOUNTING DETAIL
 SCALE: NTS
 NOTE: TO BE INSTALLED PER FDOT SPECIFICATIONS.

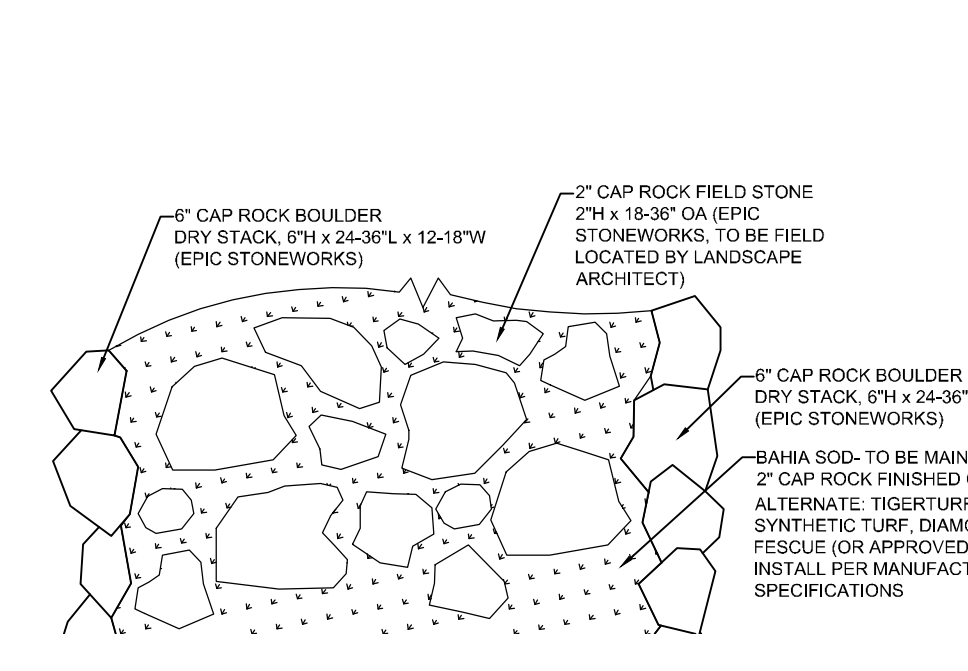


H.3
8 TREE WELL - SECTION
 SCALE: 1" = 6'-0"
 APPROXIMATELY 40 LINEAR FEET

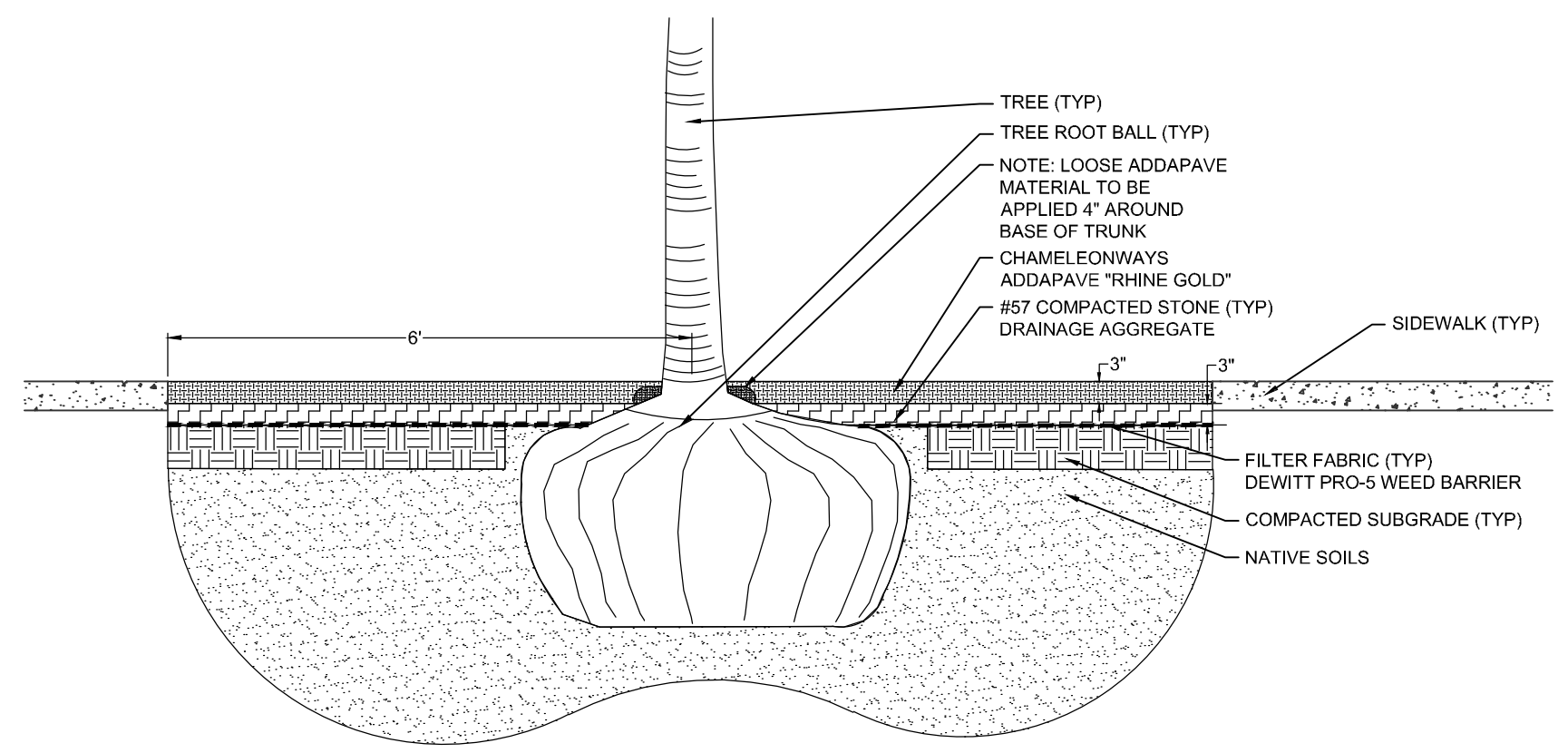
H.4
8 TREE WELL - STACK STONE DETAIL
 SCALE: 1" = 2'-0"
 APPROXIMATELY 40 LINEAR FEET



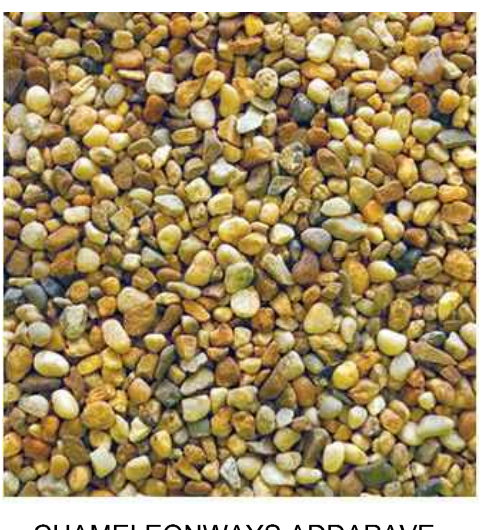
H.5
8 TREE WELL - PLAN
 SCALE: 1" = 5'-0"
 APPROXIMATELY 40 LINEAR FEET



H.2
8 TERRACED SEATING WALL - PLAN
 -SCALE: NTS



I
8 ADDAPAVE TREE PIT SYSTEM
 -SCALE: 1/2" = 1'-0"



CHAMELEONWAYS ADDAPAVE
 "RHINE GOLD"

Key / Location:

Not to Scale
 Project Team:

**Westmoreland Riverwalk
 Details & Specifications**
 Port St. Lucie, Florida
 Owner/Developer: City of Port St. Lucie
 P17-004

Date	By	Description
5.3.17	KV	Initial Submittal
6.7.17	KV	Resubmittal

NORTH

SCALE: 1" = NTS

REG. # 1018
 Thomas P. Lucido

Designer	KV	Sheet
Manager	SDG	HS-8
Project Number	16-230	
Municipal Number		
Computer File	16-230 Westmoreland Hardscape.dwg	

Copyright Lucido & Associates. These documents and their contents are the property of Lucido & Associates. Any reproductions, revisions, modifications or use of these documents without the express written consent of Lucido & Associates is prohibited by law.