



TRADITION REGIONAL PARK ADAPTIVE WHEEL PARK

City Council Project Overview

May 13, 2024

Presented by:



ACTION SPORTS DESIGN, LLC
Mike McIntyre, Founder | Principal

- PLANNING, DESIGN, ENGINEERING PHASE: Complete May 2024**
- BIDDING PHASE: July-August 2024 (2 MO.)**
- CONTRACT PHASE: October-November 2024 (2 MO.)**
- CONSTRUCTION PHASE: January-June 2025 (6 MO.)**
- PROJECT OPENING: August 2025 (1 DAY)**

****Contingent on Mattamy Project Schedule***



**ADAPTIVE WHEEL
PARK LOCATION**

PROJECT LOCATION-TRADITION PARK



ADAPTIVE WHEEL PARK MASTER PLAN

ADAPTIVE RACETRACK-INTEGRATED PUMP TRACK



BMX AND MOUNTAIN BIKES



RECUMBENT-ADAPTIVE MTB BIKES



SKATEBOARDS



SCOOTERS



ROLLER SKATES-BLADES

BICYCLE PLAY ZONE



TRICYCLE



PEDALESS BIKE

ADAPTIVE WHEEL INCLUSION



**LETTER OF SUPPORT
SANCTIONING AND PROGRAMMING**

Kelly Boatwright
Parks Administrator - Projects
Port St. Lucie
Parks & Recreation Department
2195 SE Airosa Blvd
Port St. Lucie, FL 34984

April 30, 2024

It is with pleasure that this letter is written to inform you that upon completion of the Port St. Lucie BMX Track in the Tradition Regional Park, by ASD and ABA Ethos, USA BMX will grant sanctioning to the Port St. Lucie Parks and Recreation Department.

Sanctioning Includes daily and weekly USA BMX coaching, organized practices, events, programs and BMX races to be held at least once a week. Sanctioning also includes event insurance coverage during scheduled sanctioned events.

USA BMX also guarantees inclusion in the Florida State BMX racing series, which includes the hosting of one state qualifying event. Events are rotated through facilities at a current rate of once every other season.

The USA BMX Florida State Series are the largest state series events in the country. Each event averages 900 athletes and 3,780 total attendees a day, for two days for a total of 7,560 attendees. The estimated economic impact from these events (using the Sports ETA average of \$317/per overnight attendee) is \$1.2M.

Based on attendance averages from the state of Florida, USA BMX anticipates an annual facility usage rate in excess of 42,000 attendees for programmed use and an additional 20,000 attendees for non-programmed (public access) to the all-wheel facility.

USA BMX will provide complete operational and coach staff training to the managing organization appointed by the Port St. Lucie Parks and Recreation Department.

Again, we cannot express how excited we are to add Port St. Lucie to our growing network of sanctioned facilities.

Sincerely,

A handwritten signature in black ink that reads "Justin Travis".

Justin Travis, CPRP
Director of Business Development
USA BMX

USA BMX | The American Bicycle Association | 1645 W. Sunrise Blvd., Gilbert, AZ 85233 | www.usabmx.com



PROGRAMMED USE

BMX RACING-USA BMX SANCTIONED

NON-PROGRAMMED USE

SKATEBOARDING

SCOOTERS

BMX FREERIDE/ FREESTYLE

MOUNTAIN BIKES

POTENTIAL PROGRAMMED USE

-ADAPTIVE RACING-RECUMBENT BIKES

-RC CAR RACING

-BOARDERCROSS RACING

-SCOOTER RACING

-ONE WHEEL RACING



NON-PROGRAMMED USE

SKATEBOARDING

SCOOTERS

BMX FREERIDE/ FREESTYLE

MOUNTAIN BIKES

POTENTIAL PROGRAMMED USE

-PUMP TRACK RACING-TIMED

-STRAIGHT RHYTHM RACING-TIMED

INCLUSIVE AND ADAPTIVE INNOVATION

Serve your entire community by investing in an All-Wheel Inclusive Track

New USA BMX facilities are not exclusive to just BMX bikes and they are designed with more than racing in mind.

Our All-Wheel Inclusive Track design combines the sanctioned race-ability of a traditional track, with the passive, inclusive and open to the public, all-wheel usage of a pump track and a flow park.

This means that when the facility is not in use for USA BMX sanctioned events, it has the ability to be open to the public and ridden on and enjoyed by not only BMX bikes but scooters, skateboards, roller-skates, mtn bikes and even adaptive cycles and equipment for mobility challenged.

- **Designed for USA BMX Sanctioned Racing**
- **Designed for pump**
- **Designed for All-wheel public use**
- **Designed for turn-key use**
- **Designed for low maintenance**
- **Designed for efficiency**

DESIGNED FOR EVERYONE

Sample Shared Weekly Schedule of a Sanctioned and All-Wheel Inclusive Track								
BMX Racing League: Sessions are 6 weeks each. Offered in Spring, Summer and Fall								
	Monday	Tuesday	Wednesday	Thursday	Friday	Saturday	Sunday	Key
9:00 AM	Public Access	Public Access	Public Access	Public Access	Public Access	Sanctioned Racing	Public Access	Public Access
10:00 AM	Public Access	Public Access	Public Access	Public Access	Public Access	Sanctioned Racing	Public Access	Sanctioned Racing
11:00 AM	Public Access	Public Access	Public Access	Public Access	Public Access	Sanctioned Racing	Public Access	BMX Racing League
12:00 PM	Public Access	Public Access	Public Access	Public Access	Public Access	Sanctioned Racing	Public Access	Coached Lessons
1:00 PM	Public Access	Public Access	Public Access	Public Access	Public Access		Public Access	Open Stacyc
2:00 PM	Public Access	Public Access	Public Access	Public Access	Public Access	Rental (R/C)	Public Access	Rental (R/C)
3:00 PM	Public Access	Public Access	Public Access	Public Access	Public Access	Rental (R/C)	Public Access	Open Practice
4:00 PM		Public Access	Public Access		Public Access		Public Access	
5:00 PM	Open Practice			Sanctioned Racing	Public Access	Open Stacyc	Public Access	
6:00 PM	Open Practice	Coached Lessons	BMX Racing League	Sanctioned Racing	Public Access	Open Stacyc	Public Access	
7:00 PM	Open Practice	Coached Lessons	BMX Racing League	Sanctioned Racing	Public Access	Open Stacyc	Public Access	
8:00 PM	Open Practice			Sanctioned Racing	Public Access	Open Stacyc	Public Access	

Note: USA BMX event and liability insurance is only applicable during the scheduled, sanctioned activities. ie; Racing, Practice, Coached Lessons, BMX Racing League, and Stacyc events.





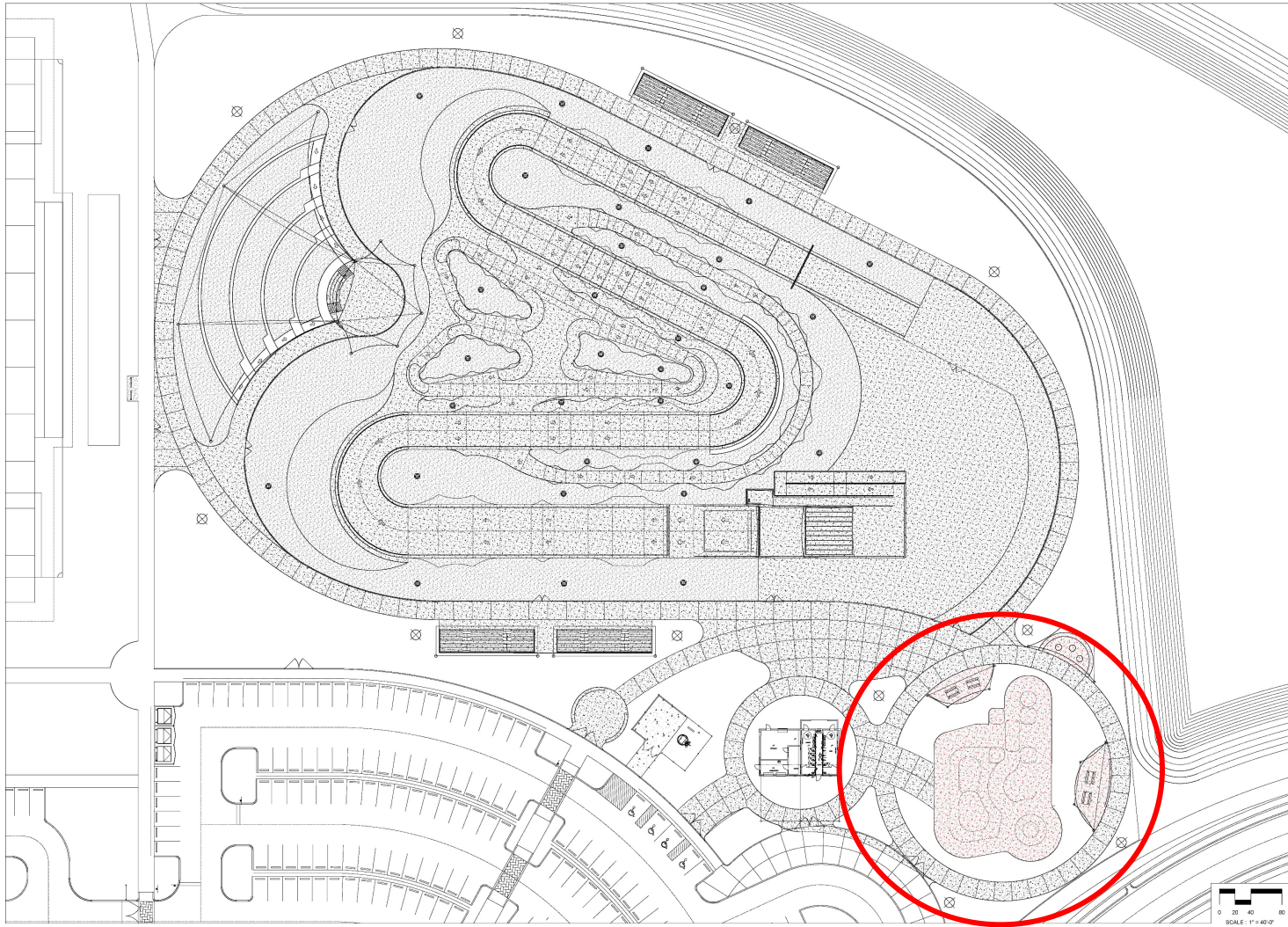
ADAPTIVE RACETRACK-INTEGRATED PUMP TRACK & JUMPLINES



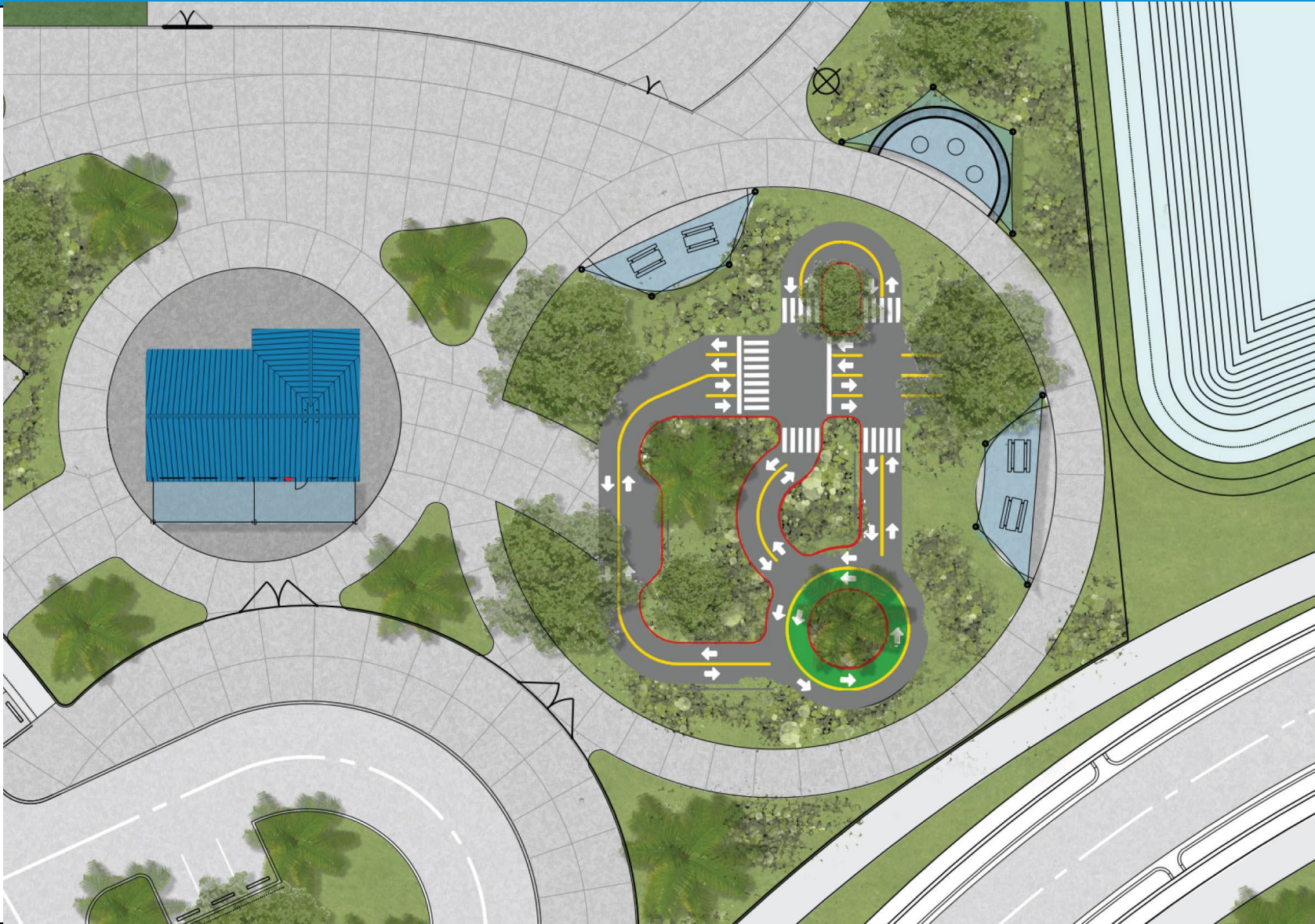
ADAPTIVE RACETRACK-INTEGRATED PUMP TRACK & JUMPLINES



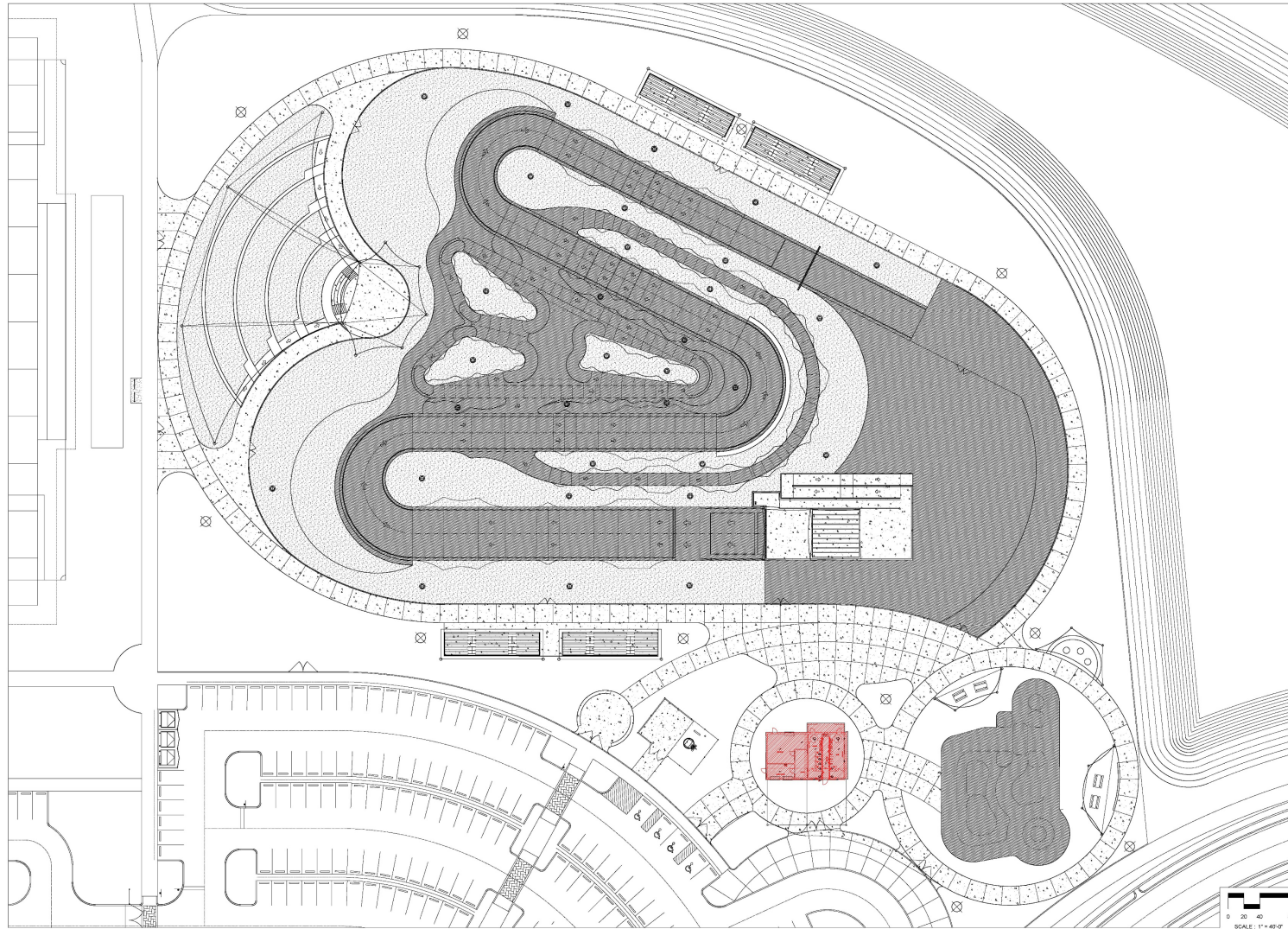
**TRADITION REGIONAL PARK
ADAPTIVE WHEEL PARK
(CLICK LINK HERE)**



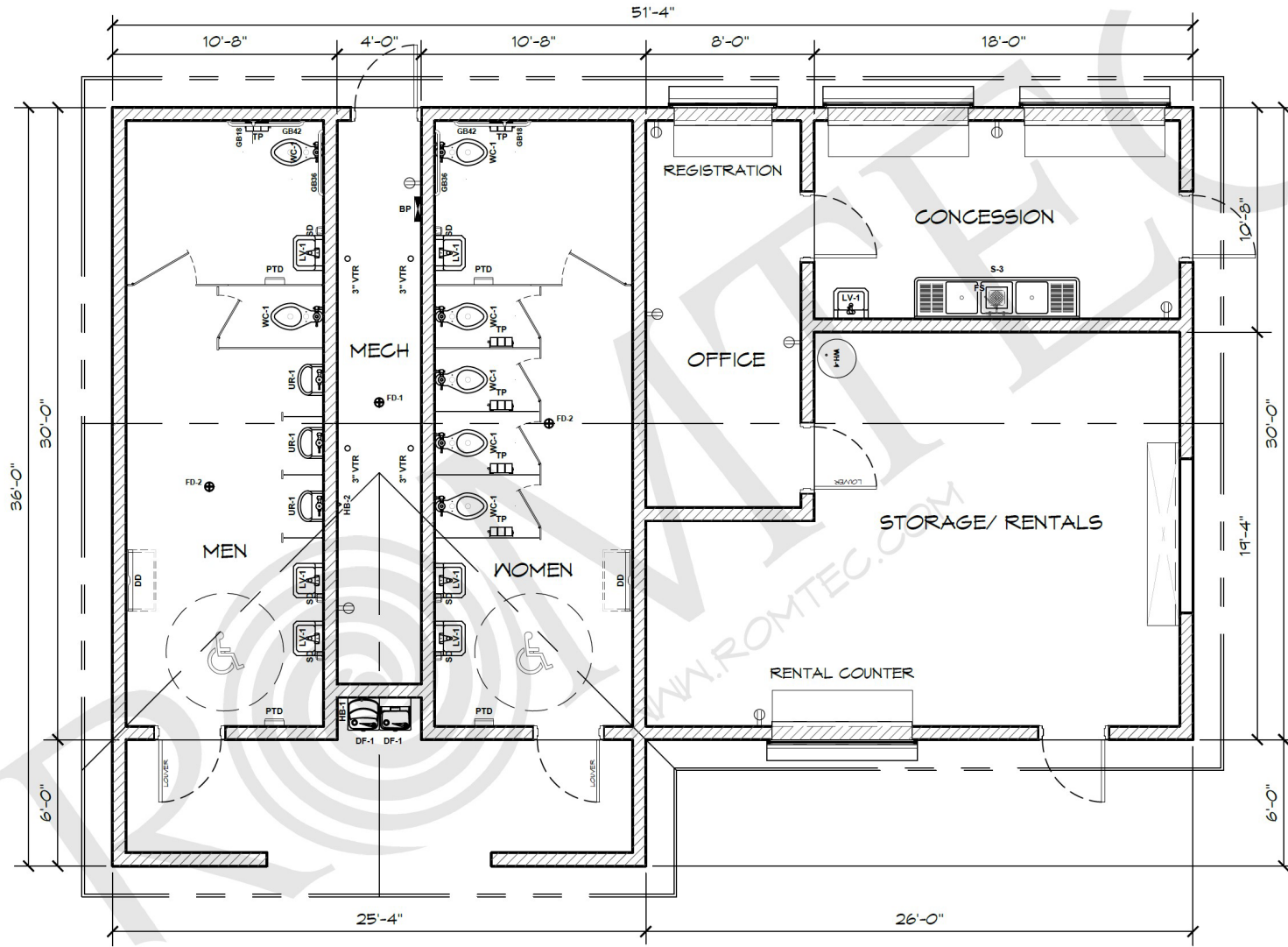
BICYCLE PLAY ZONE



BICYCLE PLAY ZONE



RESTROOMS-CONCESSION-ADMIN-STORAGE BUILDING



RESTROOMS-CONCESSION-ADMIN-STORAGE BUILDING



- ❑ **BASE BID: \$4.5M**
- ❑ **BID ALTERNATES: 1.2M**
 - **Synthetic Turf**
 - **Shade-Gathering Space**
 - **Shade-Registration**
 - **Shade-Track Staging**

QUESTIONS & ANSWERS