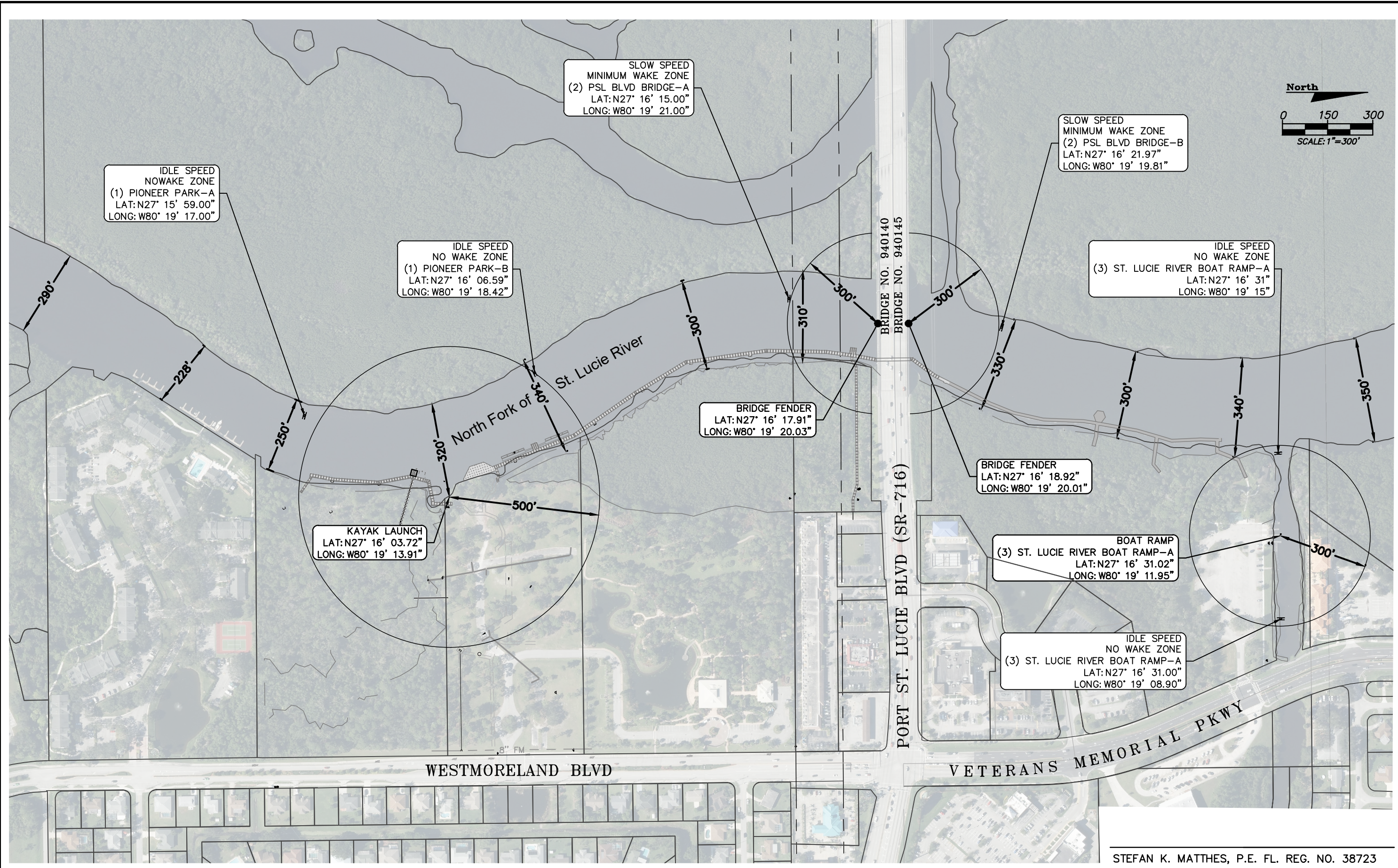


P:\Proj-2016\16-031-007 Riverwalk Boardwalk Phase 2\Eng\16-031-007 Dock Exhibit-11X17.dwg Date: 11/15/2024 8:52 AM By: KITHSRI UDUGAMA



STEFAN K. MATTHES, P.E. FL. REG. NO. 38723

REVISIONS					
DATE	BY	DESCRIPTION	DATE	BY	DESCRIPTION

C&T JOB NO. 16.031-007	
DESIGNED BY SKM 11/13/24	DRAWN BY KU 11/13/24
CHECKED BY SKM 11/15/24	CHECKED BY
ENGINEER OF RECORD STEFAN K. MATTHES, P.E. FL. REG. NO. 38723	

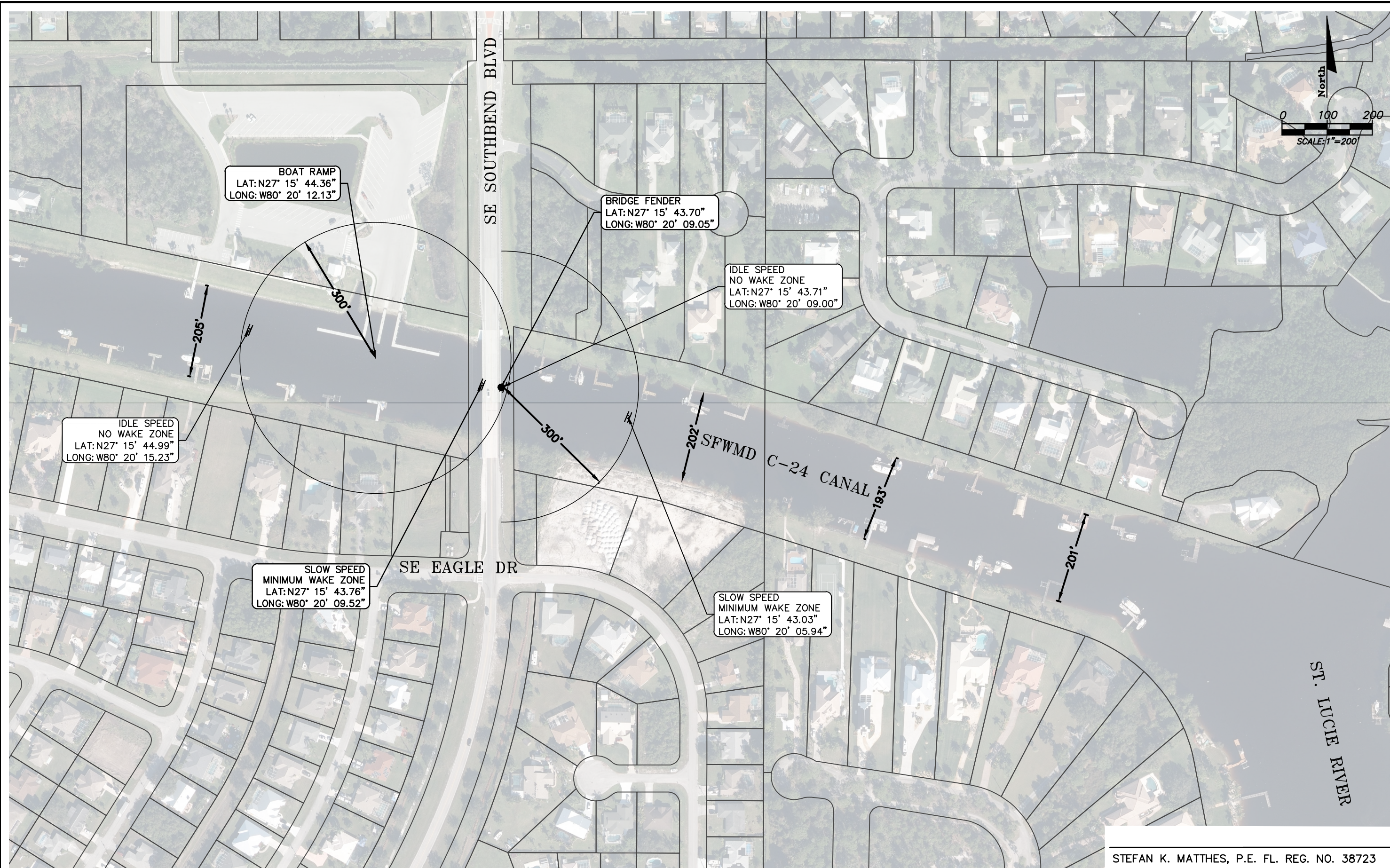
CULPEPPER & TERPENING INC
2980 SOUTH 25th STREET • FORT PIERCE, FLORIDA
PHONE 772-464-3537 • FAX 734-8834-9497 • www.ct-eng.com
STATE OF FLORIDA BOARD OF PROFESSIONAL ENGINEERS AUTHORIZATION NO. 4286

CITY OF PORT ST. LUCIE
PROJECT NAME
PROPOSED WATERWAY MARKERS EXHIBIT

THE PORT DISTRICT
1 OF 2

SHEET NO.
1 OF 2

P:\Proj-2016\16-031-007 Riverwalk Boardwalk Phase 2\Eng\16-031-007_Dock Exhibit-11X17.dwg Date: 11/15/2024 8:52 AM By: KITHSRI UJUGAMA



STEFAN K. MATTHES, P.E. FL. REG. NO. 38723

REVISIONS					
DATE	BY	DESCRIPTION	DATE	BY	DESCRIPTION

C&T JOB NO. 16.031-007	
DESIGNED BY SKM 11/13/24	DRAWN BY KU 11/13/24
CHECKED BY SKM 11/15/24	CHECKED BY
ENGINEER OF RECORD STEFAN K. MATTHES, P.E. FL. REG. NO. 38723	



CULPEPPER & TERPENING INC
 2980 SOUTH 25th STREET • FORT PIERCE, FLORIDA
 PHONE 772-464-3537 • FAX 734-884-9497 • www.ct-eng.com
 STATE OF FLORIDA BOARD OF PROFESSIONAL ENGINEERS AUTHORIZATION NO. 4286

CITY OF PORT ST. LUCIE
PROJECT NAME
PROPOSED WATERWAY MARKERS EXHIBIT

C-24 BOAT RAMP
2 OF 2

SHEET NO.
2 OF 2