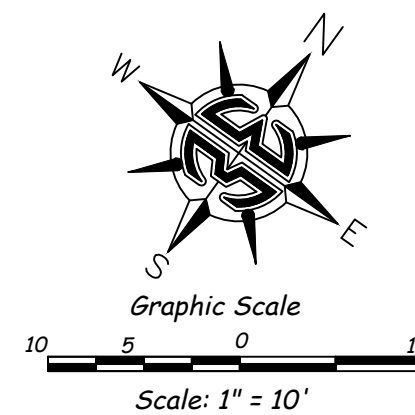
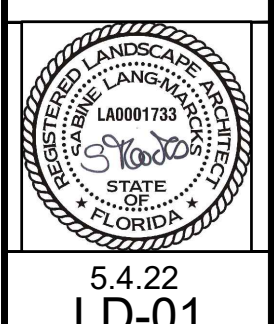


Scale:	1"=80'
Drawn by:	CA
Checked by:	SM
CADD No.:	22-044
Date:	5.4.22

Revisions	Comments	Date

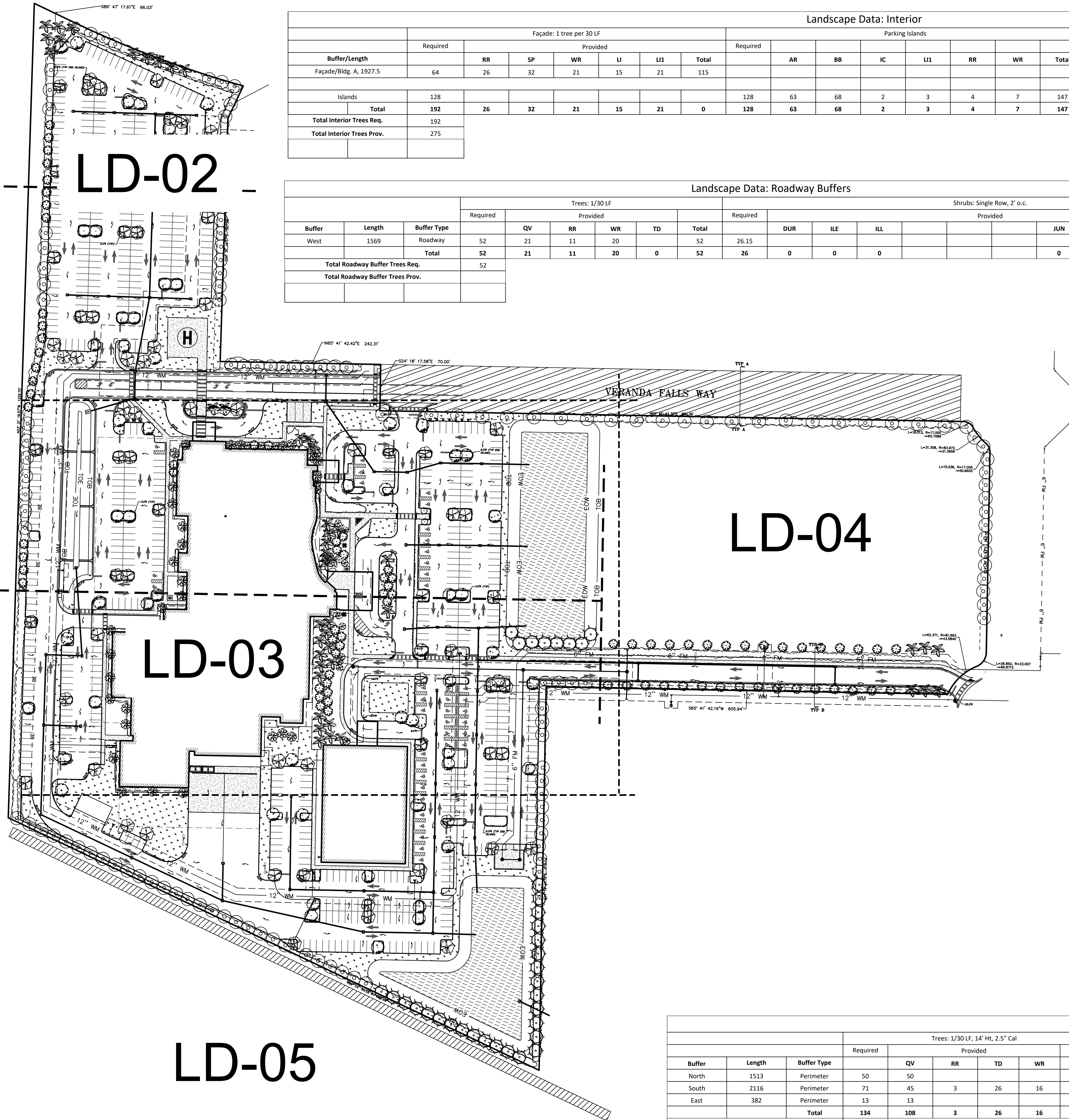


Buffer/Length	Façade: 1 tree per 30 LF							Parking Islands							Shrubs: 2' o.c.									
	Required	Provided						Required	AR	BB	IC	LI1	RR	WR	Total	Required	Provided						Total	
Façade/Bldg. A, 1927.5	64	RR	SP	WR	LI	LI1	Total									963.75	DUR	VIB	POD	ILL	MUH	ZAM	Total	
		26	32	21	15	21	115																	0
Islands	128							128	63	68	2	3	4	7	147									0
<b>Total</b>	<b>192</b>	<b>26</b>	<b>32</b>	<b>21</b>	<b>15</b>	<b>21</b>	<b>0</b>	<b>128</b>	<b>63</b>	<b>68</b>	<b>2</b>	<b>3</b>	<b>4</b>	<b>7</b>	<b>147</b>	<b>964</b>	<b>0</b>	<b>0</b>	<b>0</b>	<b>0</b>	<b>0</b>	<b>0</b>	<b>0</b>	<b>0</b>
Total Interior Trees Req.	192																							
Total Interior Trees Prov.	275																							

Buffer	Length	Buffer Type	Trees: 1/30 LF					Shrubs: Single Row, 2' o.c.														
			Required	Provided				Required	Provided									Total				
West	1569	Roadway	52	QV	RR	WR	TD	Total	26.15	DUR	ILE	ILL					JUN	MUH	MYR	ZAM	Total	
			52	21	11	20	0	52	26	0	0	0					0	0	0	0	0	0
<b>Total Roadway Buffer Trees Req.</b>			<b>52</b>																			
<b>Total Roadway Buffer Trees Prov.</b>																						

Buffer	Length	Buffer Type	Trees: 1/30 LF, 14' Ht, 2.5" Cal					Shrubs: Single Row, 2' o.c.														
			Required	Provided				Required	Provided									Total				
North	1513	Perimeter	50	QV	RR	TD	WR	Total	756.5	DUR	ILE	ILL					JUN	MUH	MYR	ZAM	Total	
South	2116	Perimeter	71	45	3	26	16	90	1058													0
East	382	Perimeter	13	13				13	191													0
<b>Total</b>		<b>Total</b>	<b>134</b>	<b>108</b>	<b>3</b>	<b>26</b>	<b>16</b>	<b>153</b>	<b>2006</b>	<b>0</b>	<b>0</b>	<b>0</b>					<b>0</b>	<b>0</b>	<b>0</b>	<b>0</b>	<b>0</b>	<b>0</b>
<b>Total Perimeter Buffer Trees Req.</b>			<b>134</b>																			
<b>Total Perimeter Buffer Trees Prov.</b>			<b>153</b>																			

- Landscape Legend:**
- Qty Symb Name
- Trees:**
- 63 AR Red Maple (Native)
  - 68 BB Acer rubrum 'Florida Flame', FG, 14' Ht, 4" cal
  - 2 CH Hong Kong Orchid Tree
  - 3 IC Bauhinia x blaeana, FG, 14' Ht, 4" cal
  - 15 LI European Fan Palm
  - 24 LI1 Chamaerops humilis, FG, 8' Ht, Multi
  - 129 QV Dahoon Holly
  - 47 RR Ilex cassine, 30 gal, 10' Ht, 2" cal min
  - 32 SP Crape Myrtle, Lavender
  - 34 TD Lagerstromia indica 'Muskogee', 30 gal, 10' Ht, 2" cal, min
  - 80 WR Lagerstromia indica 'Natchez', 30 gal, 10' Ht, 2" cal, min
  - \* CRI Crinum Lily
  - \* CRI Crinum augustum 'Queen Emma', 7 gal, 36" o.c.
- Accent:**
- Shrubs:**
- DUR Gold Mound
  - HAM Duranta erecta 'Gold Mound', 3 gal, 30" oc
  - VIO Dwarf Firebush (Native)
  - VIS Hamelia patens 'Compacta', 18"x18", 24" o.c.
  - VIB Walters Viburnum (Native) (C)
  - ZAM Viburnum obovatum 'Whitlacochee', 24"x18", 36" o.c.
  - ZAM Walters Viburnum (Native) (C)
  - ZAM Viburnum obovatum 'Select', 30"x18", 24" o.c.
  - ZAM Dwarf Walters Viburnum (Native) (D)
  - ZAM Viburnum obovatum 'Mrs Schiller's Delight', 18"x18", 24" o.c.
  - ZAM Coontie (Native) (D)
  - ZAM Zamia floridana, 3 gal, 18" ht, 36" o.c.
- Groundcover:**
- AGA Lily of the Nile
  - DIE Agapanthus sp., 1 gal, 18" o.c.
  - LAN African Iris
  - LIR Dietes iridioides, 1 gal, 24" o.c.
  - MUH Pineland Lantana (Native)
  - RUD Lantana depressa, 1 gal, 8"x8", 36" o.c.
  - SAL Liriope
  - SAL Liriope muscari 'Super Blue', 1 gal, 18" o.c.
  - SAL Muhly Grass (Native)
  - SAL Muhlenbergia capillaris, 3 gal, 18" ht, 24" o.c.
  - SAL Black-eyed Susan
  - SAL Rudbeckia fulgida 'Goldsturm', 1 gal, 18" o.c.
  - SAL Purple Sage
  - SAL Salvia farinacea & cultivars, 1 gal, 18" o.c.



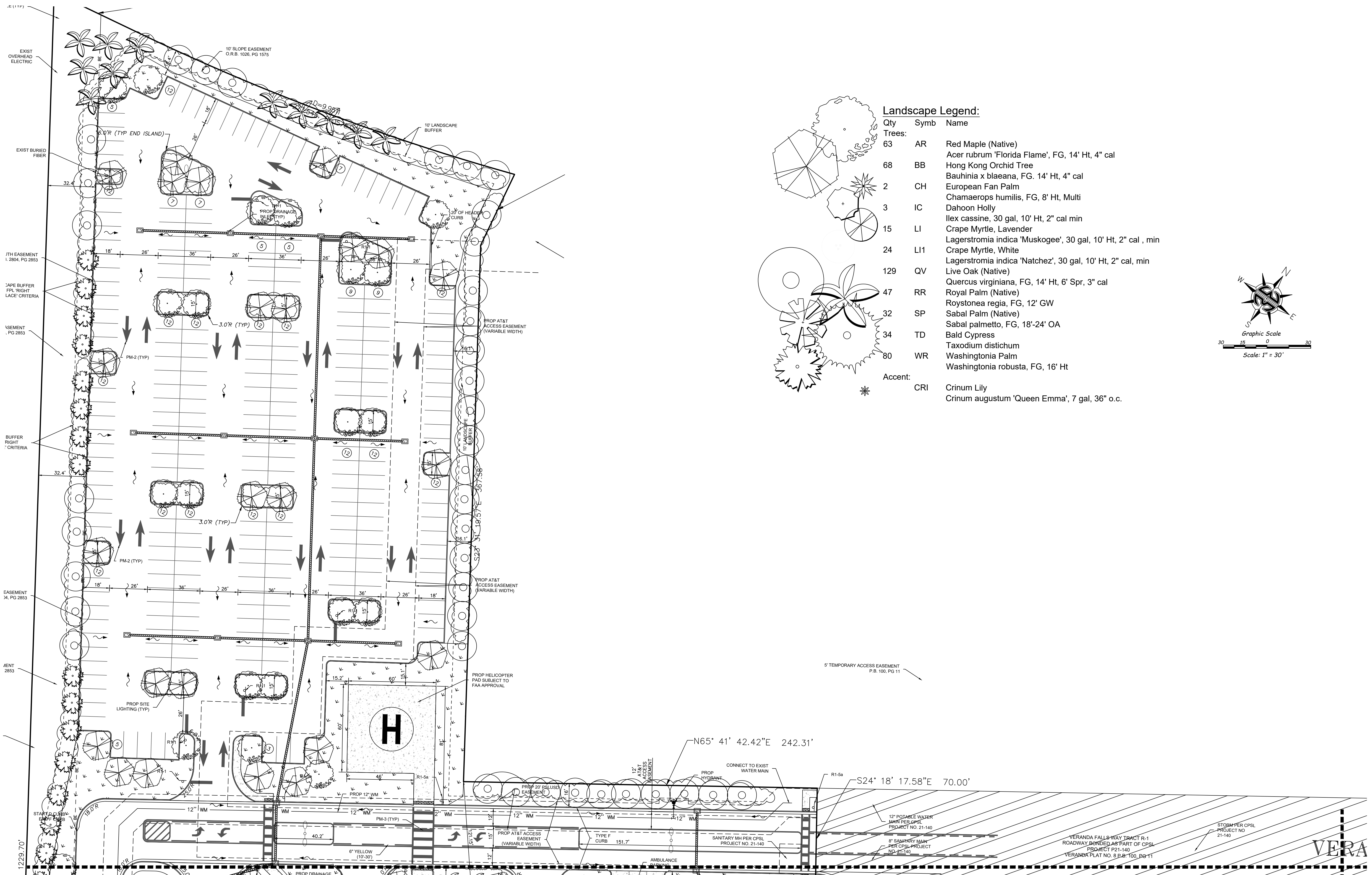
LD-02

LD-03

LD-04

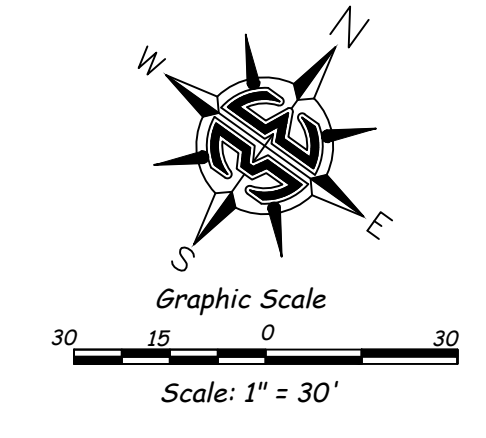
LD-05





**Landscape Legend:**

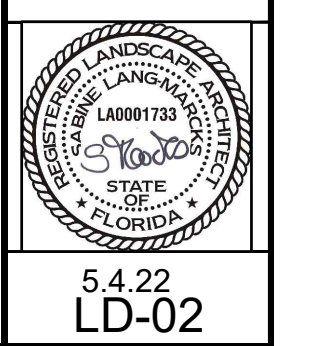
Qty	Symb	Name
<b>Trees:</b>		
63	AR	Red Maple (Native)
		Acer rubrum 'Florida Flame', FG, 14' Ht, 4" cal
68	BB	Hong Kong Orchid Tree
		Bauhinia x blaeana, FG, 14' Ht, 4" cal
2	CH	European Fan Palm
		Chamaerops humilis, FG, 8' Ht, Multi
3	IC	Dahoon Holly
		Ilex cassine, 30 gal, 10' Ht, 2" cal min
15	LI	Crape Myrtle, Lavender
		Lagerstromia indica 'Muskogee', 30 gal, 10' Ht, 2" cal , min
24	LI1	Crape Myrtle, White
		Lagerstromia indica 'Natchez', 30 gal, 10' Ht, 2" cal. min
129	QV	Live Oak (Native)
		Quercus virginiana, FG, 14' Ht, 6" Spr, 3" cal
47	RR	Royal Palm (Native)
		Roystonea regia, FG, 12' GW
32	SP	Sabal Palm (Native)
		Sabal palmetto, FG, 18'-24' OA
34	TD	Bald Cypress
		Taxodium distichum
80	WR	Washingtonia Palm
		Washingtonia robusta, FG, 16' Ht
<b>Accent:</b>		
	CRI	Crinum Lily
		Crinum augustum 'Queen Emma', 7 gal, 36" o.c.



Match Line LD-03

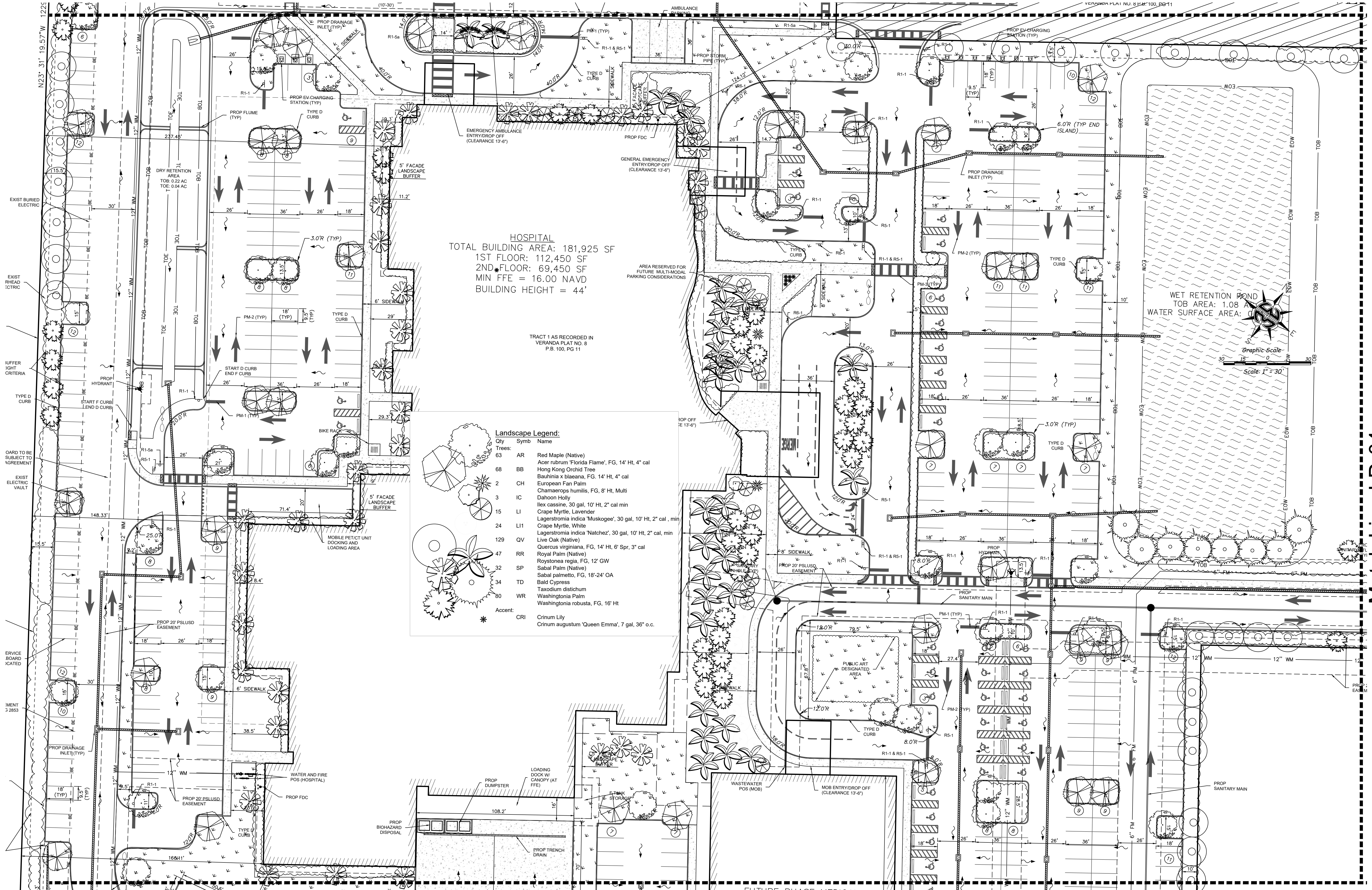
Revisions	Comments	Date

**Veranda Falls Medical**  
 City of Port St. Lucie  
**Conceptual Landscape Plan**





Match Line LD-02



Match Line LD-05

Match Line LD-04

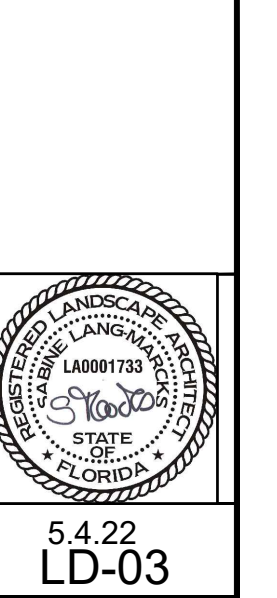
Landscape Design Associates  
 25110 NW 182nd Ave  
 High Springs, FL 32643  
 352-210-5766 ph, www.landscapea.com

Scale: 1"=30'  
 Drawn by: CA  
 Checked by: SM  
 CADD No.: 22-044  
 Date: 5.4.22

Revisions	Date	Comments

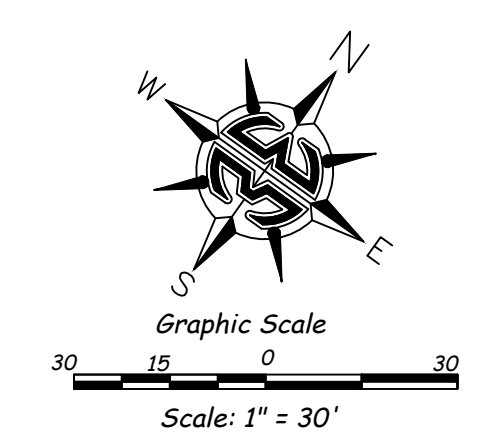
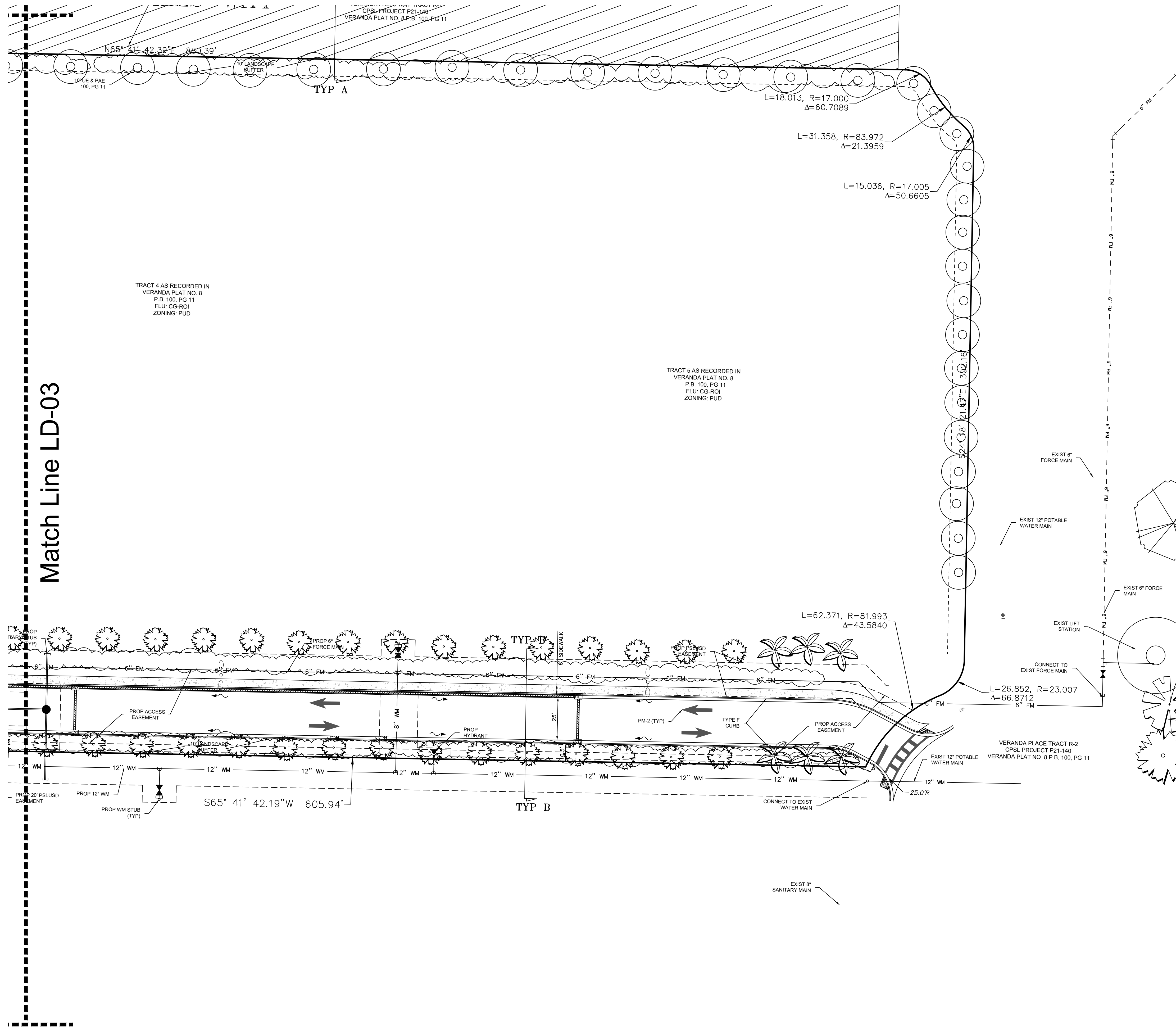
© 2022 THESE PLANS ARE THE PROPERTY OF LANDSCAPE DESIGN ASSOCIATES AND ARE NOT TO BE REPRODUCED OR TRANSMITTED IN ANY FORM OR BY ANY MEANS, ELECTRONIC OR MECHANICAL, WITHOUT PERMISSION.

Veranda Falls Medical  
 City of Port St. Lucie  
 Conceptual Landscape Plan





# Match Line LD-03



### Landscape Legend:

Qty	Symb	Name
<b>Trees:</b>		
63	AR	Red Maple (Native)
68	BB	Acer rubrum 'Florida Flame', FG, 14' Ht, 4" cal
		Hong Kong Orchid Tree
2	CH	Bauhinia x blaeana, FG, 14' Ht, 4" cal
		European Fan Palm
3	IC	Chamaerops humilis, FG, 8' Ht, Multi
		Dahoon Holly
15	LI	Ilex cassine, 30 gal, 10' Ht, 2" cal min
		Crape Myrtle, Lavender
24	LI1	Lagerstromia indica 'Muskogee', 30 gal, 10' Ht, 2" cal , min
		Crape Myrtle, White
129	QV	Lagerstromia indica 'Natchez', 30 gal, 10' Ht, 2" cal, min
		Live Oak (Native)
47	RR	Quercus virginiana, FG, 14' Ht, 6' Spr, 3" cal
		Royal Palm (Native)
32	SP	Roystonea regia, FG, 12' GW
		Sabal Palm (Native)
34	TD	Sabal palmetto, FG, 18'-24' OA
		Bald Cypress
80	WR	Taxodium distichum
		Washingtonia Palm
		Washingtonia robusta, FG, 16' Ht
<b>Accent:</b>		
	CRI	Crinum Lily
		Crinum augustum 'Queen Emma', 7 gal, 36" o.c.

Scale:	1"=30'
Drawn by:	CA
Checked by:	SM
CADD No.:	22-044
Date:	5.4.22

Revisions	Comments
Date	

## Veranda Falls Medical City of Port St. Lucie Conceptual Landscape Plan

