



NOTE: ALL LANDSCAPING MEETS FDOT CLEAR ZONE AND SIGHT DISTANCE CRITERIA.

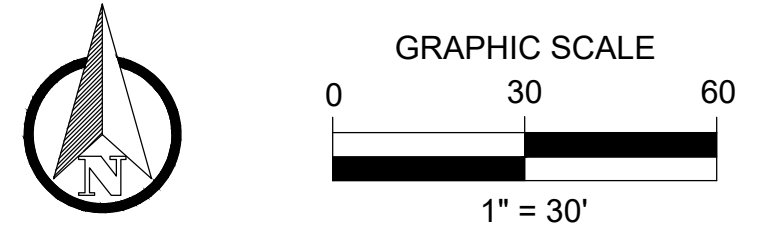
**TREE TABLE**

TREE NO.	COMMON NAME	SCIENTIFIC NAME	D.B.H. IN INCHES	DISPOSITION
1	Sabal Palm	Sabal palmetto	13	PRESERVE
2	Pongam	Pongamia pinnata	12	PRESERVE
3	Pongam	Pongamia pinnata	18	PRESERVE
4	Slash Pine	Pinus elliottii	17	PRESERVE
5	Slash Pine	Pinus elliottii	12	PRESERVE
6	Slash Pine	Pinus elliottii	16	PRESERVE
7	Slash Pine	Pinus elliottii	14	PRESERVE
8	Slash Pine	Pinus elliottii	15	PRESERVE
9	Slash Pine	Pinus elliottii	13	PRESERVE
10	Slash Pine	Pinus elliottii	15	PRESERVE
11	Live Oak	Quercus virginiana	16	PRESERVE
12	Live Oak	Quercus virginiana	12	PRESERVE
13	Live Oak	Quercus virginiana	12	PRESERVE
14	Slash Pine	Pinus elliottii	6	PRESERVE
15	Slash Pine	Pinus elliottii	7	PRESERVE
16	Slash Pine	Pinus elliottii	5	PRESERVE
17	Slash Pine	Pinus elliottii	7	PRESERVE
18	Slash Pine	Pinus elliottii	9	PRESERVE
19	Swamp Bay	Persea palustris	11	PRESERVE
20	Slash Pine	Pinus elliottii	17	PRESERVE
21	Slash Pine	Pinus elliottii	9	PRESERVE
22	Slash Pine	Pinus elliottii	10	PRESERVE
23	Slash Pine	Pinus elliottii	11	PRESERVE
24	Slash Pine	Pinus elliottii	6	PRESERVE
25	Slash Pine	Pinus elliottii	5	PRESERVE
26	Slash Pine	Pinus elliottii	4	PRESERVE
27	Slash Pine	Pinus elliottii	8	PRESERVE
28	Slash Pine	Pinus elliottii	7	PRESERVE
29	Slash Pine	Pinus elliottii	3	PRESERVE
30	Slash Pine	Pinus elliottii	7	PRESERVE
31	Slash Pine	Pinus elliottii	5	PRESERVE
32	Slash Pine	Pinus elliottii	10	PRESERVE
33	Slash Pine	Pinus elliottii	4	PRESERVE
34	Slash Pine	Pinus elliottii	10	PRESERVE
35	Slash Pine	Pinus elliottii	5	PRESERVE
36	Slash Pine	Pinus elliottii	5	PRESERVE
37	Slash Pine	Pinus elliottii	3	PRESERVE
38	Slash Pine	Pinus elliottii	5	PRESERVE
39	Slash Pine	Pinus elliottii	7	PRESERVE
40	Slash Pine	Pinus elliottii	3	PRESERVE
41	Slash Pine	Pinus elliottii	8	PRESERVE
42	Dahoon Holly	Ilex cassine	8	PRESERVE
43	Dahoon Holly	Ilex cassine	8	PRESERVE
44	Slash Pine	Pinus elliottii	11	PRESERVE
45	Slash Pine	Pinus elliottii	8	PRESERVE
46	Dahoon Holly	Ilex cassine	3	PRESERVE
47	Swamp Bay	Persea palustris	3	PRESERVE
48	Slash Pine	Pinus elliottii	4	PRESERVE
49	Slash Pine	Pinus elliottii	12	PRESERVE
50	Slash Pine	Pinus elliottii	10	PRESERVE
51	Slash Pine	Pinus elliottii	9	PRESERVE
52	Dahoon Holly	Ilex cassine	3	PRESERVE
53	Slash Pine	Pinus elliottii	9	PRESERVE
54	Slash Pine	Pinus elliottii	9	PRESERVE
55	Slash Pine	Pinus elliottii	8	PRESERVE
56	Slash Pine	Pinus elliottii	3	PRESERVE
57	Slash Pine	Pinus elliottii	5	PRESERVE
58	Slash Pine	Pinus elliottii	10	PRESERVE
59	Slash Pine	Pinus elliottii	7	PRESERVE
60	Slash Pine	Pinus elliottii	5	PRESERVE
61	Slash Pine	Pinus elliottii	10	PRESERVE
62	Slash Pine	Pinus elliottii	4	PRESERVE
63	Slash Pine	Pinus elliottii	6	PRESERVE
64	Slash Pine	Pinus elliottii	9	PRESERVE
65	Slash Pine	Pinus elliottii	4	PRESERVE
66	Slash Pine	Pinus elliottii	6	PRESERVE
67	Slash Pine	Pinus elliottii	6	PRESERVE
68	Slash Pine	Pinus elliottii	5	PRESERVE
69	Slash Pine	Pinus elliottii	7	PRESERVE
70	Live Oak	Quercus virginiana	9	PRESERVE
71	Live Oak	Quercus virginiana	10	PRESERVE
72	Slash Pine	Pinus elliottii	8	PRESERVE
73	Slash Pine	Pinus elliottii	6	PRESERVE
74	Slash Pine	Pinus elliottii	8	PRESERVE
75	Slash Pine	Pinus elliottii	5	PRESERVE
76	Slash Pine	Pinus elliottii	5	PRESERVE
77	Slash Pine	Pinus elliottii	8	PRESERVE
78	Slash Pine	Pinus elliottii	11	PRESERVE
79	Slash Pine	Pinus elliottii	7	PRESERVE
80	Slash Pine	Pinus elliottii	7	PRESERVE
81	Slash Pine	Pinus elliottii	7	PRESERVE
82	Slash Pine	Pinus elliottii	8	PRESERVE
83	Slash Pine	Pinus elliottii	7	PRESERVE
84	Slash Pine	Pinus elliottii	8	PRESERVE
85	Slash Pine	Pinus elliottii	8	PRESERVE
86	Slash Pine	Pinus elliottii	5	PRESERVE
87	Slash Pine	Pinus elliottii	5	PRESERVE
88	Slash Pine	Pinus elliottii	8	PRESERVE
89	Slash Pine	Pinus elliottii	3	PRESERVE
90	Slash Pine	Pinus elliottii	4	PRESERVE
91	Live Oak	Quercus virginiana	10	PRESERVE
92	Live Oak	Quercus virginiana	10	PRESERVE
93	Live Oak	Quercus virginiana	5	PRESERVE
94	Live Oak	Quercus virginiana	4	PRESERVE
95	Slash Pine	Pinus elliottii	8	PRESERVE
96	Slash Pine	Pinus elliottii	6	PRESERVE
97	Slash Pine	Pinus elliottii	7	PRESERVE
98	Slash Pine	Pinus elliottii	6	PRESERVE
99	Slash Pine	Pinus elliottii	5	PRESERVE
100	Slash Pine	Pinus elliottii	9	PRESERVE
101	Slash Pine	Pinus elliottii	8	PRESERVE
102	Slash Pine	Pinus elliottii	9	PRESERVE
103	Slash Pine	Pinus elliottii	10	PRESERVE
104	Slash Pine	Pinus elliottii	9	PRESERVE
105	Slash Pine	Pinus elliottii	9	REMOVE
106	Slash Pine	Pinus elliottii	12	REMOVE
107	Sabal Palm	Sabal palmetto	10	REMOVE
108	Sabal Palm	Sabal palmetto	10	REMOVE

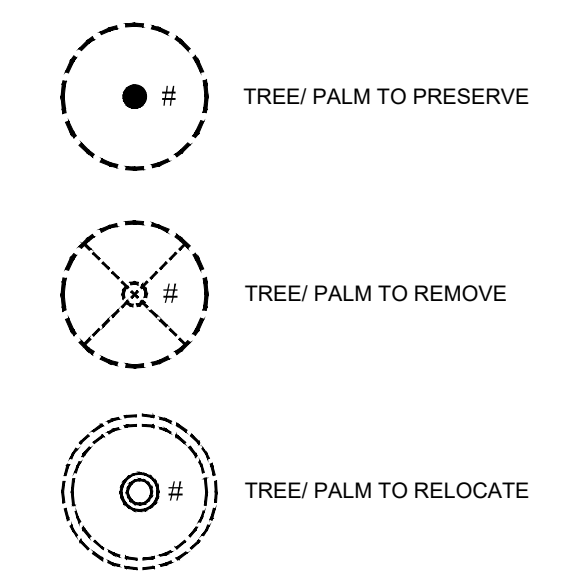
\*All palms are measured in feet to clear trunk.

- Notes:**
- Per Sec. 154.16(A) - Any tree which is the subject of a mitigation plan shall be replaced at a ratio of one inch D.B.H. for each inch of D.B.H. removed; and
  - Per Sec. 154.16(B) - Only trees with 12" DBH or greater require mitigation.
  - No permit shall be required to remove non-native invasive or undesirable species listed under Section 154.03(L). These species are not registered on

TOTAL TREE DBH REMOVED	12
TOTAL TREE DBH PRESERVED COUNTED AS	817
<b>MITIGATION</b>	
MITIGATION REQUIRED FROM TREES PLANTED ON SITE	0
<b>TOTAL PALMS REMOVED</b>	
PALMS REQUIRED TO PLANT ON SITE	2



**LEGEND**



**Wannemacher Jensen Architects, Inc.**  
 132 Mirror Lake Drive N. Unit 301  
 St. Petersburg, Florida 33701-3214  
 (727) 822-5566  
 www.wjajc.com  
 AF94244  
 ©Wannemacher Jensen Architects, Inc.

**WGL**  
 2035 Vista Parkway, West Palm Beach, FL 33411  
 Phone No. 561.909.2220 www.wgln.com  
 Cert No. 6591 - LB No. 7055

**ST. LUCIE MILNER DR. FIRE STATION**  
 ST. LUCIE COUNTY FIRE DISTRICT  
 5160 NW MILNER DR. PORT ST. LUCIE, FL 34983

Project number  
**2241**

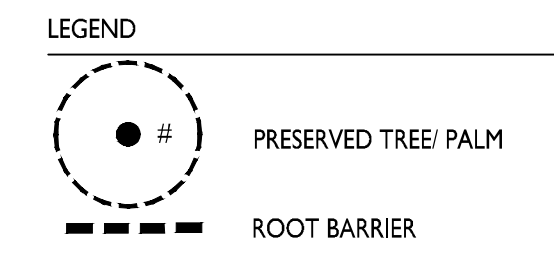
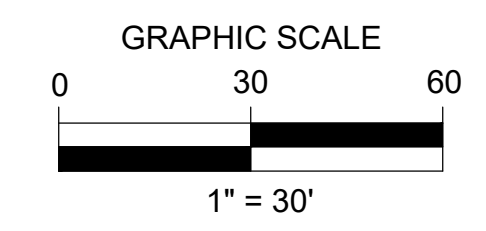
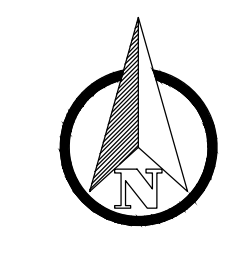
**DISTRIBUTION**

MILESTONE	DATE
PERMIT SET	04/13/23
PERMIT SET REVISION	08/11/23
PERMIT SET REVISION	09/08/23

TREE DISPOSITION PLAN  
 P07-002-A1  
 PSLUSD #5002-21  
**LD-100**



NOTE: ALL LANDSCAPING MEETS FDOT CLEAR ZONE AND SIGHT DISTANCE CRITERIA.



LANDSCAPE REQUIREMENTS		
CITY OF PORT ST. LUCIE, FLORIDA		
<b>GENERAL LANDSCAPING</b>		
<b>SITE PERIMETER LANDSCAPING</b>	<b>REQUIRED</b>	<b>PROVIDED</b>
10' WIDE LANDSCAPE STRIP, EXCLUDING CURBING, LOCATED ADJACENT TO ALL RIGHT-OF-WAY AND ABUTTING PROPERTIES.	SOUTH PERIMETER 343 LF / 30 LF = 11 TREES (11 TREES X 75% = 8 SHADE TREES MIN.)	SOUTH PERIMETER 11 TREES PROVIDED (6 EXISTING TREES + 5 TREES PROVIDED) 11 SHADE TREES PROVIDED
1 TREE PER 30 LF OF REQUIRED LANDSCAPE PERIMETER AREA	343 LF / 2 LF = 171 SHRUBS	177 SHRUBS PROVIDED
CONTINUOUS HEDGE EXTENDED ALONG THE PERIMETER. 1 SHRUB PER 2 LF SHRUBS AT LEAST 24" IN HEIGHT AT TIME OF PLANTING.	EAST PERIMETER 220 LF / 30 LF = 8 TREES (8 TREES X 75% = 6 SHADE TREES MIN.)	EAST PERIMETER 12 TREES PROVIDED (6 EXISTING TREES + 6 TREES PROVIDED) 12 SHADE TREES PROVIDED
	220 LF / 2 LF = 110 SHRUBS	113 SHRUBS PROVIDED
	NORTH PERIMETER 149 LF / 30 LF = 5 TREES (5 TREES X 75% = 4 SHADE TREES MIN.)	NORTH PERIMETER 3 PROPOSED TREES (CONFLICT WITH EXISTING UTILITIES) 3 SHADE TREES PROVIDED
	149 LF / 2 LF = 75 SHRUBS	78 SHRUBS PROVIDED
	WEST PERIMETER 343 LF / 30 LF = 12 TREES (12 TREES X 75% = 9 SHADE TREES MIN.)	WEST PERIMETER 16 EXISTING TREES 16 SHADE TREES PROVIDED
	343 LF / 2 LF = 172 SHRUBS	182 SHRUBS PROVIDED
<b>BUILDING FACADE</b>		
<b>5' WIDE LANDSCAPE STRIP, LOCATED AROUND PERIMETER OF A BUILDING ADJACENT TO ALL RIGHT-OF-WAY AND ABUTTING PROPERTIES.</b>	<b>REQUIRED</b>	<b>PROVIDED</b>
1 TREE / PALM PER 30 LF OF BUILDING FACADE	240 LF / 30 LF = 8 TREES / PALMS	8 TREES PROVIDED [4 PROPOSED PALMS + 4 PROPOSED TREES]
CONTINUOUS HEDGE EXTENDED ALONG THE PERIMETER. 1 SHRUB PER 2 LF SHRUBS AT LEAST 24" IN HEIGHT AT TIME OF PLANTING.	240 LF / 2 LF = 120 SHRUBS	724 SHRUBS PROVIDED
<b>VEHICULAR USE AREAS</b>		
<b>PARKING LOT INTERIOR LANDSCAPE</b>	<b>REQUIRED</b>	<b>PROVIDED</b>
1 PARKING ISLAND AT EACH END OF A PARKING BAY WITH 1 SHADE TREE AND THE REMAINDER OF THE ISLAND LANDSCAPED WITH A GROUND COVER, MULCH, SHRUBS OR OTHER TREATMENT EXCLUDING PAVING.	6 PARKING ISLANDS = 6 SHADE TREES	6 TREES PROVIDED
<b>PLANT MATERIAL STANDARDS</b>		
<b>PLANT SPECIES</b>		<b>PROVIDED</b>
MIN 50% OF TOTAL TREE MATERIAL MUST BE NATIVE		75% OF TREES PROVIDED ARE NATIVE
MAX 25% OF SHALL BE PALMS		25% OF TREES PROVIDED ARE PALMS
MIN 20% MUST BE FLOWERING TREES		20% OF TREES PROVIDED ARE FLOWERING TREES
MIN 75% SHALL BE EVERGREEN TREES		100% OF TREES PROVIDED ARE EVERGREEN TREES
MIN. 2 TREE SPECIES		3 TREE SPECIES & 3 PALMS SPECIES PROVIDED
MIN 25% OF TOTAL SHRUBS MUST BE NATIVE		98% OF SHRUBS ARE NATIVE
MIN 10% OF SHRUBS SHALL BE FLOWERING		30% OF SHRUBS ARE FLOWERING
MIN. 50% OF PLANT MATERIAL SHALL BE DROUGHT TOLERANT		100% OF SHRUBS AND GROUND COVER PROVIDED ARE DROUGHT TOLERANT
<b>MITIGATION</b>		
<b>PALM MITIGATION</b>	<b>REQUIRED</b>	<b>PROVIDED</b>
1 PALM REMOVED = 1 PALM REPLACED	2 PALMS REMOVED = 2 PALMS REQUIRED	2 PALMS PROVIDED
<b>SIGN</b>		
<b>PALM MITIGATION</b>	<b>REQUIRED</b>	<b>PROVIDED</b>
SIGNS SHALL HAVE A LANDSCAPE AREA AROUND ITS BASE THAT EXTENDS A MINIMUM DISTANCE OF 3 FEET IN ALL DIRECTIONS. LANDSCAPE MATERIAL SHALL BE DROUGHT-TOLERANT GROUND COVERS AND SHRUBS	3' MIN OF LANDSCAPE AREA	3' OF LANDSCAPE AREA WITH DROUGHT-TOLERANT GROUND COVERS AND SHRUBS

**Wannemacher Jensen Architects, Inc.**  
 132 Mirror Lake Drive N, Unit 301  
 St. Petersburg, Florida 33701-3214  
 (727) 822-5566  
 www.wjarc.com  
 AR94244  
 ©Wannemacher Jensen Architects, Inc.

**WGL**  
 2035 Vista Parkway, West Palm Beach, FL 33411  
 Phone No. 866.909.2220 www.wginc.com  
 Cert No. 6091 - LB No. 7055

**ST. LUCIE MILNER DR. FIRE STATION**  
 ST. LUCIE COUNTY FIRE DISTRICT  
 5160 NW MILNER DR. PORT ST. LUCIE, FL 34983

Project number  
**2241**

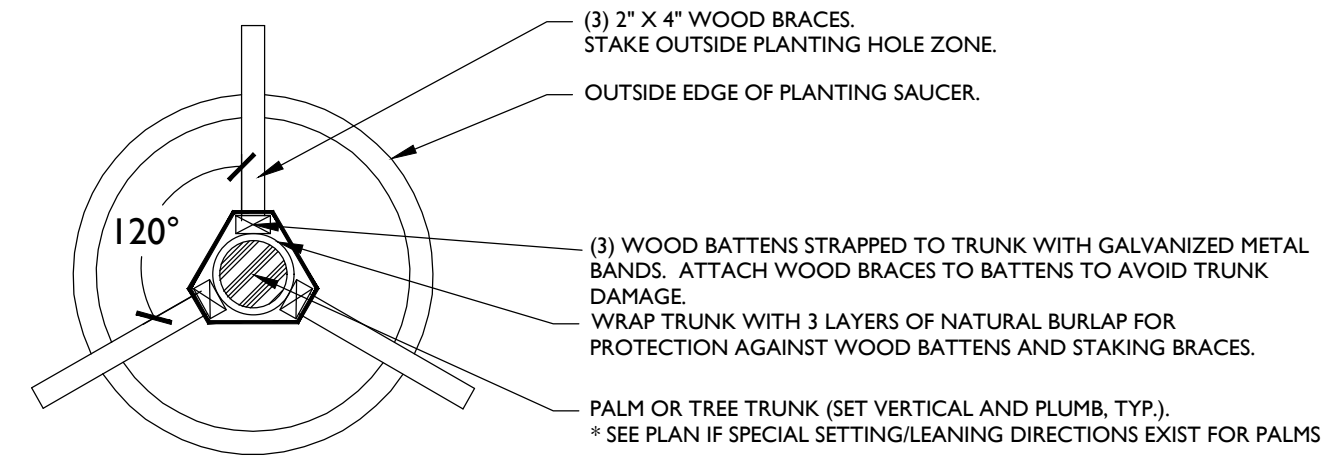
DISTRIBUTION

MILESTONE	DATE
PERMIT SET	04/13/23
PERMIT SET REVISION	08/11/23
PERMIT SET REVISION	09/08/23

LANDSCAPE PLAN  
 P07-002-A1  
 PSLUSD #5002-21  
**LP-100**

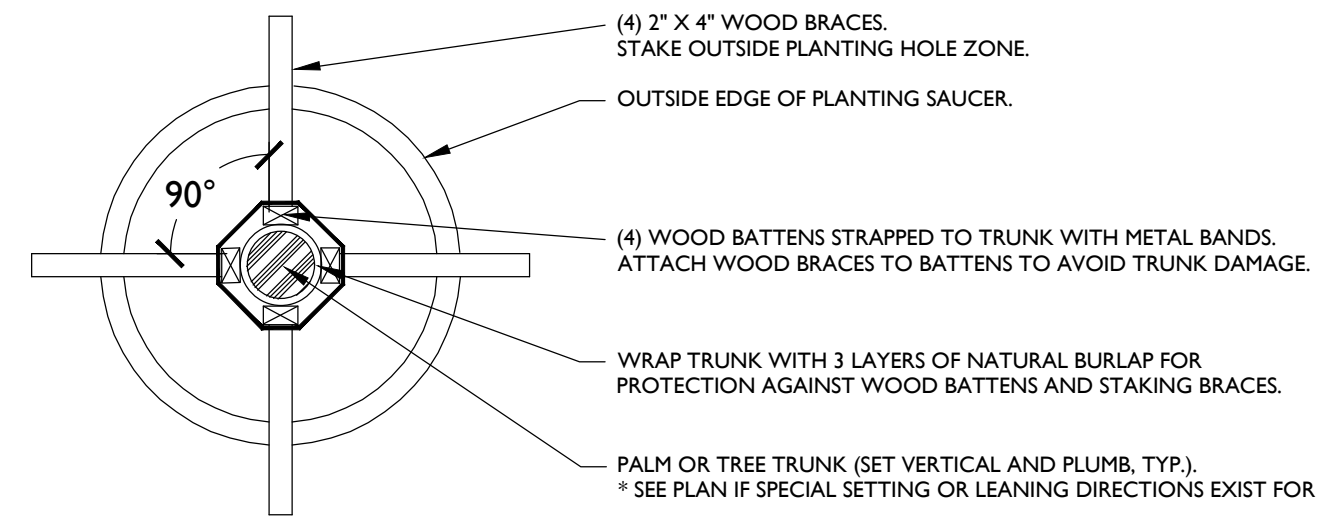
### SMALL PALM STAKING PLAN

NOTE:  
1. APPLICABLE TO ALL PALMS WITH CALIPER SIZE OF LESS THAN SIX (6) INCHES.  
2. ALL TREE SUPPORTS MATERIALS ARE TO BE REMOVED FROM EACH TREE ONCE IT IS ESTABLISHED. TYPICALLY SIX MONTHS FOR SHADE TREES OR ONE YEAR FOR PALMS.

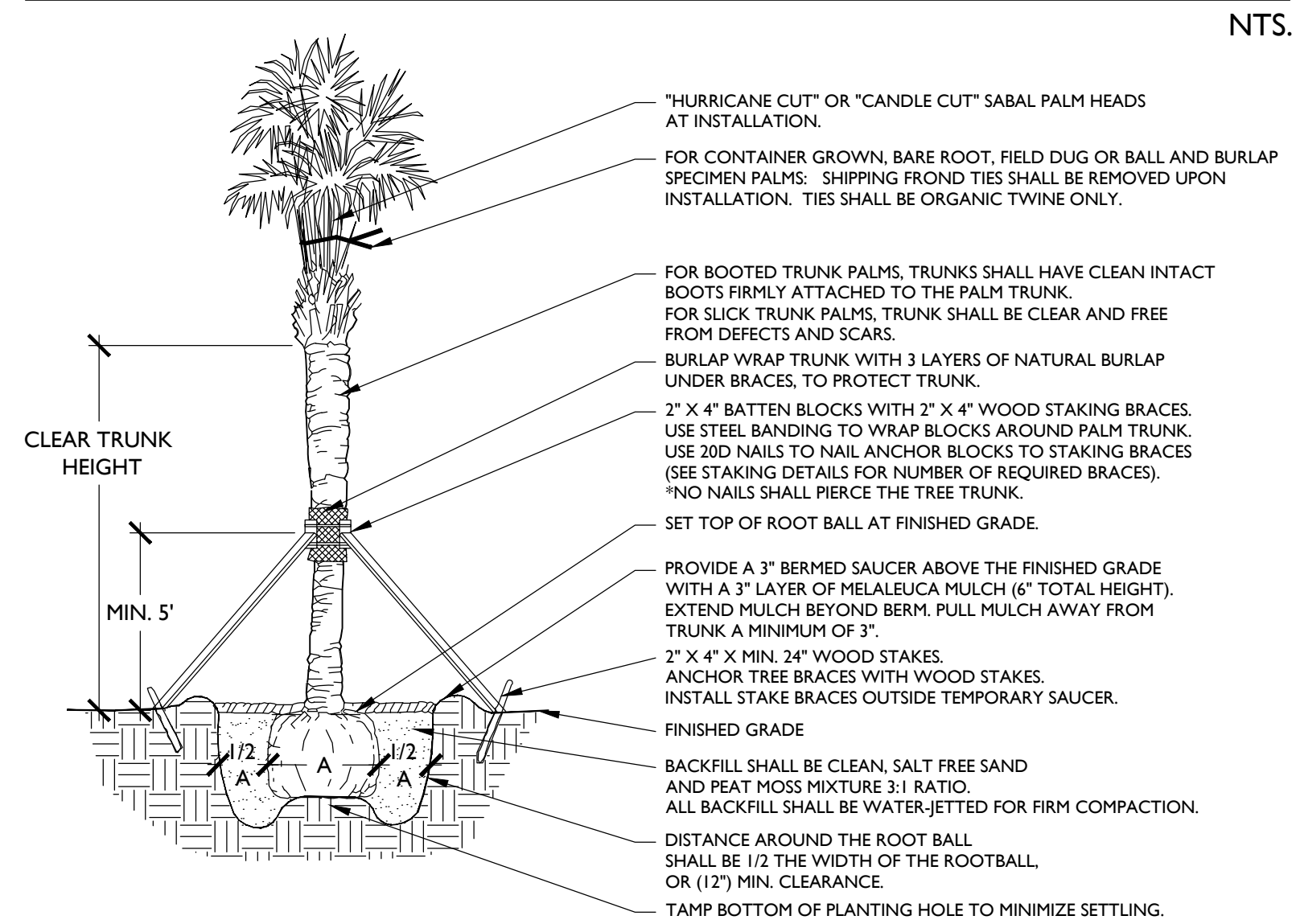


### LARGE PALM OR TREE STAKING PLAN

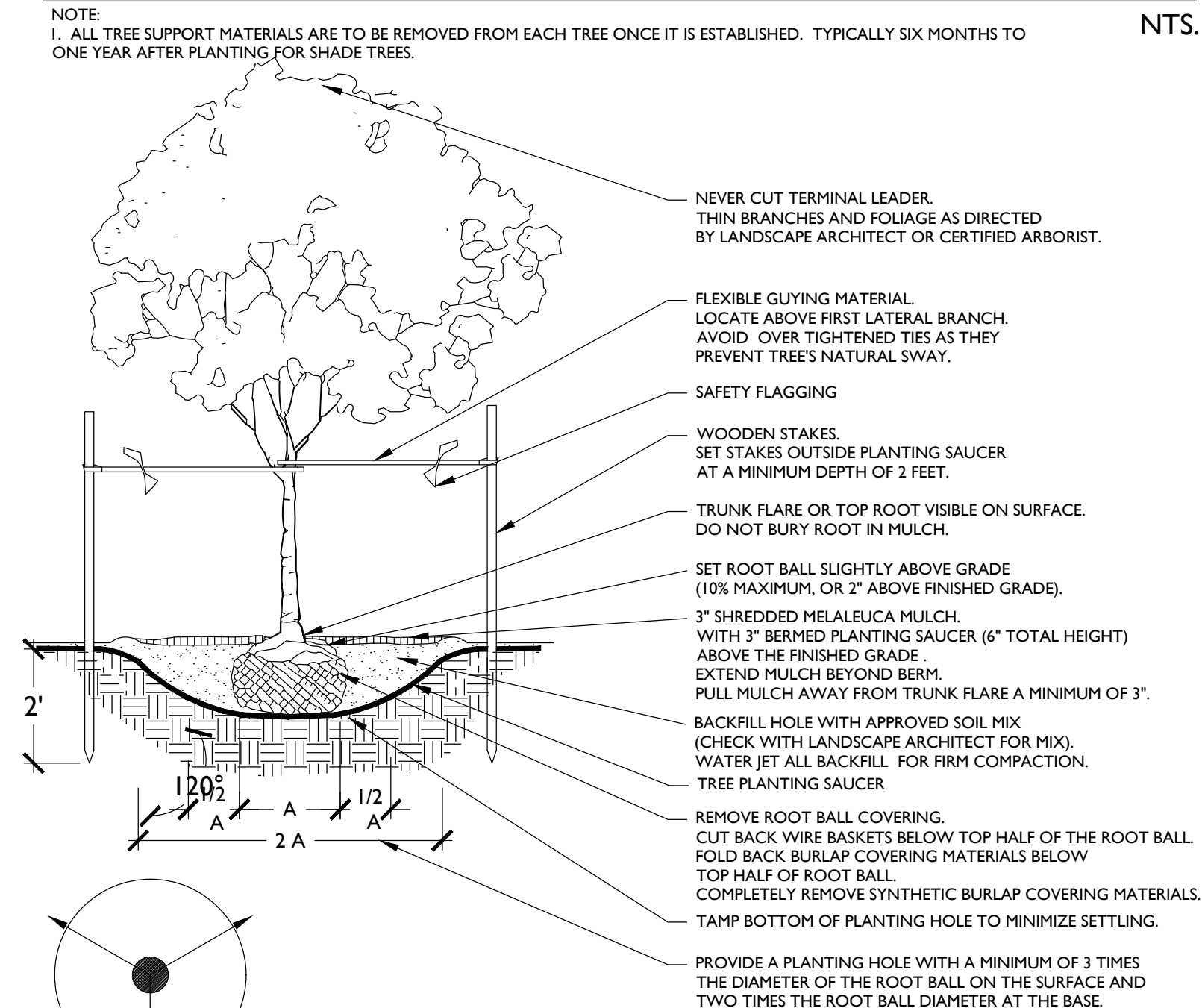
NOTE:  
1. APPLICABLE TO ALL MULTI-TRUNK PALMS AND PALMS WITH CALIPER SIZE OF SIX (6) INCHES OR GREATER.  
2. ALL TREE SUPPORTS MATERIALS ARE TO BE REMOVED FROM EACH TREE ONCE IT IS ESTABLISHED. TYPICALLY SIX MONTHS FOR SHADE TREES OR ONE YEAR FOR PALMS.



### PALM PLANTING DETAIL

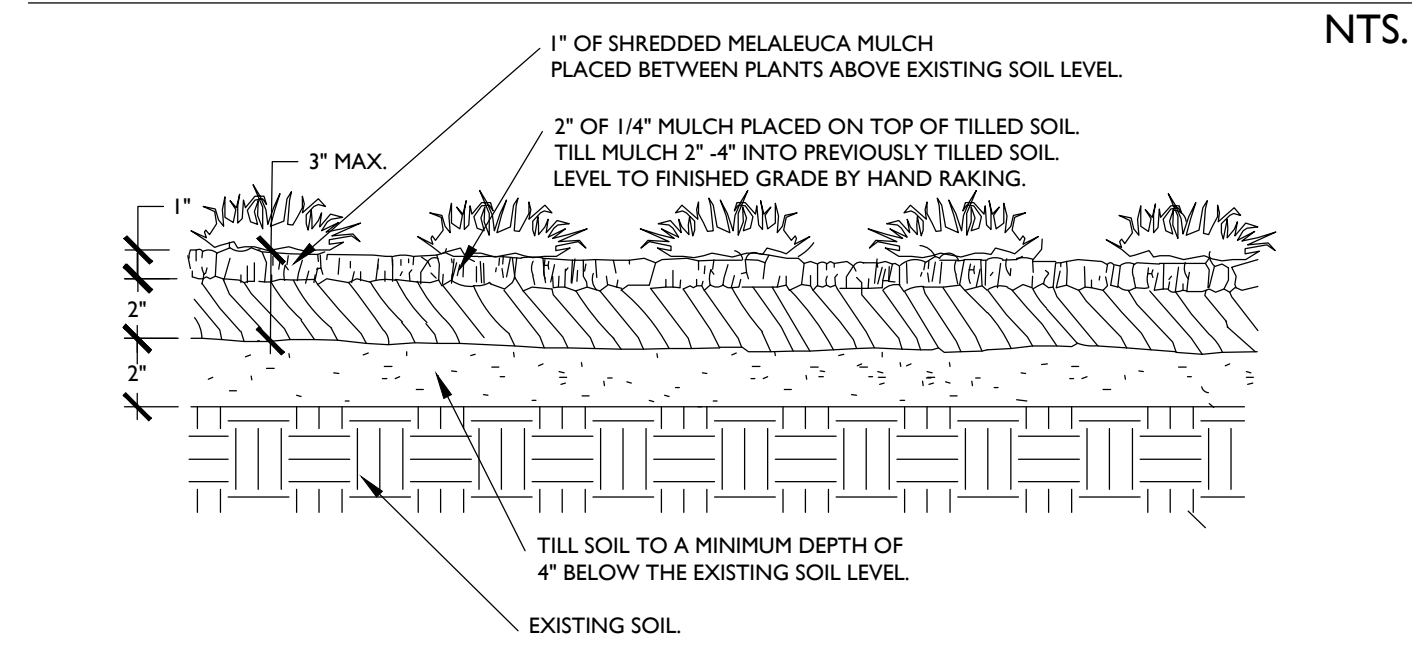


### TREE PLANTING DETAIL



STAKING PLAN DIAGRAM

### GROUND COVER DETAIL

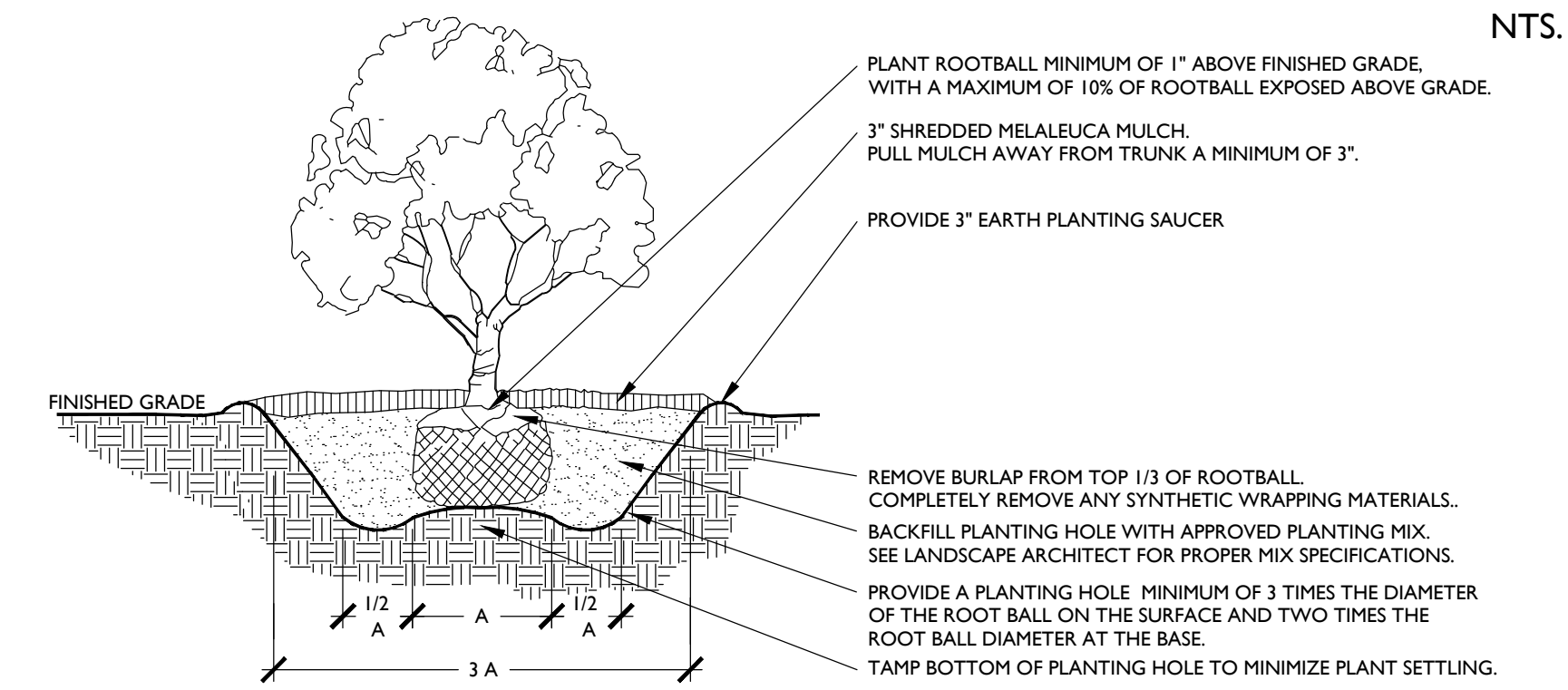


### PLANT SPACING DETAIL

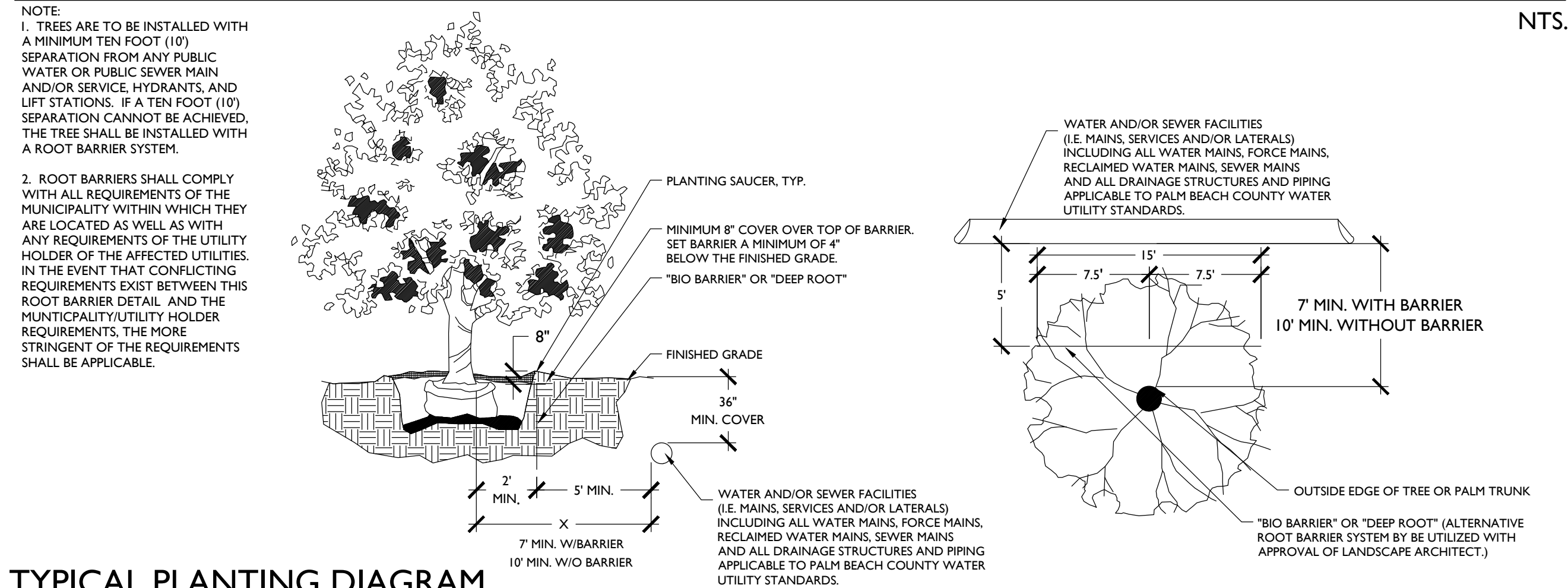
PLANT SPACING CHART

SPACING "D"	ROW "A"
6" O.C.	5.2"
8" O.C.	6.92"
10" O.C.	8.66"
12" O.C.	10.4"
18" O.C.	15.6"
24" O.C.	20.8"
30" O.C.	26.0"
36" O.C.	31.2"
48" O.C.	41.6"

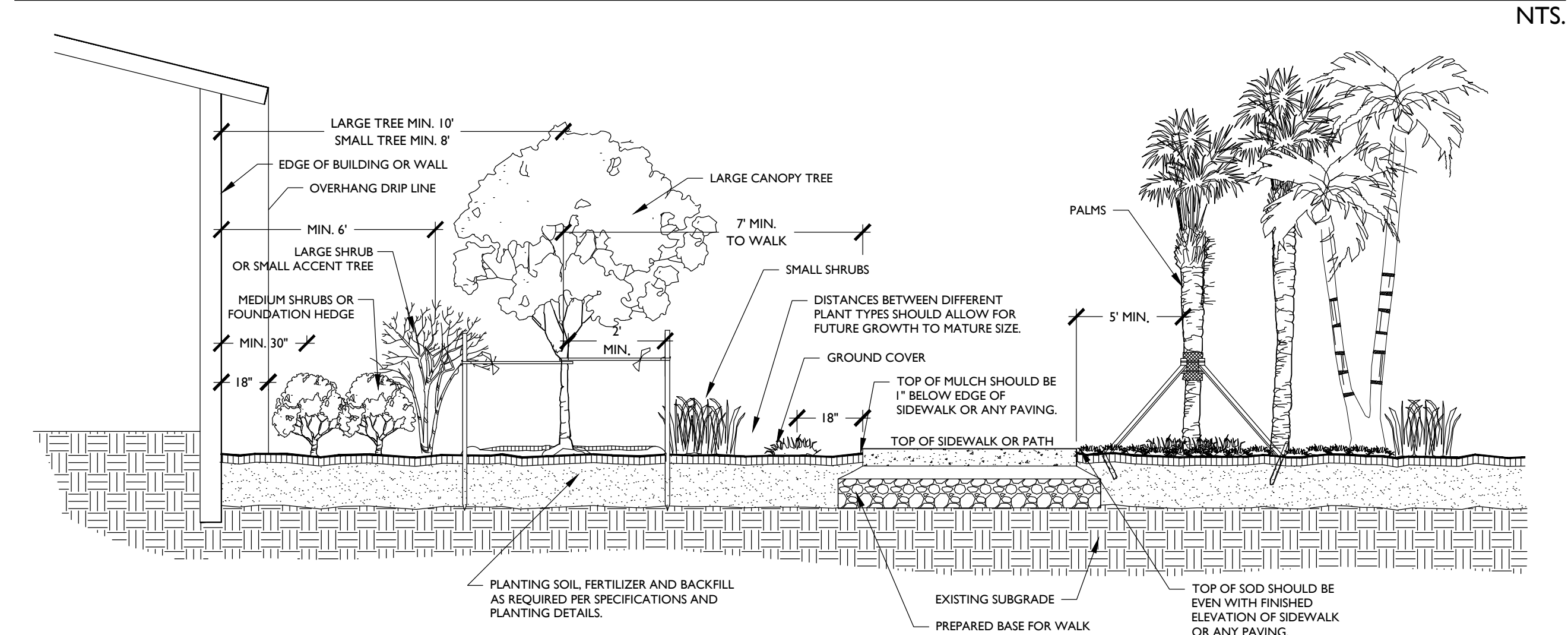
### SHRUB PLANTING DETAIL



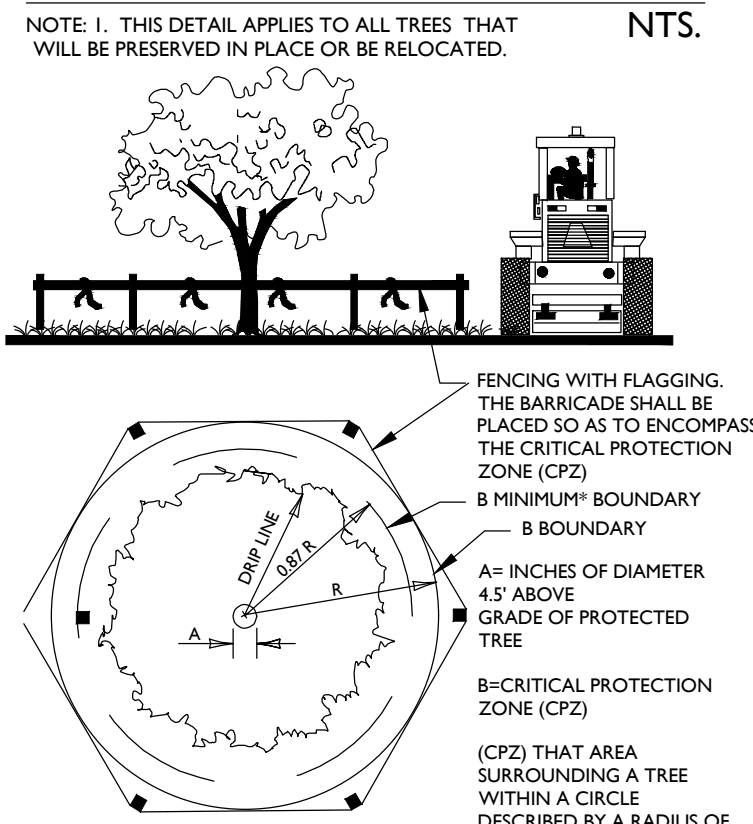
### ROOT BARRIER DETAIL



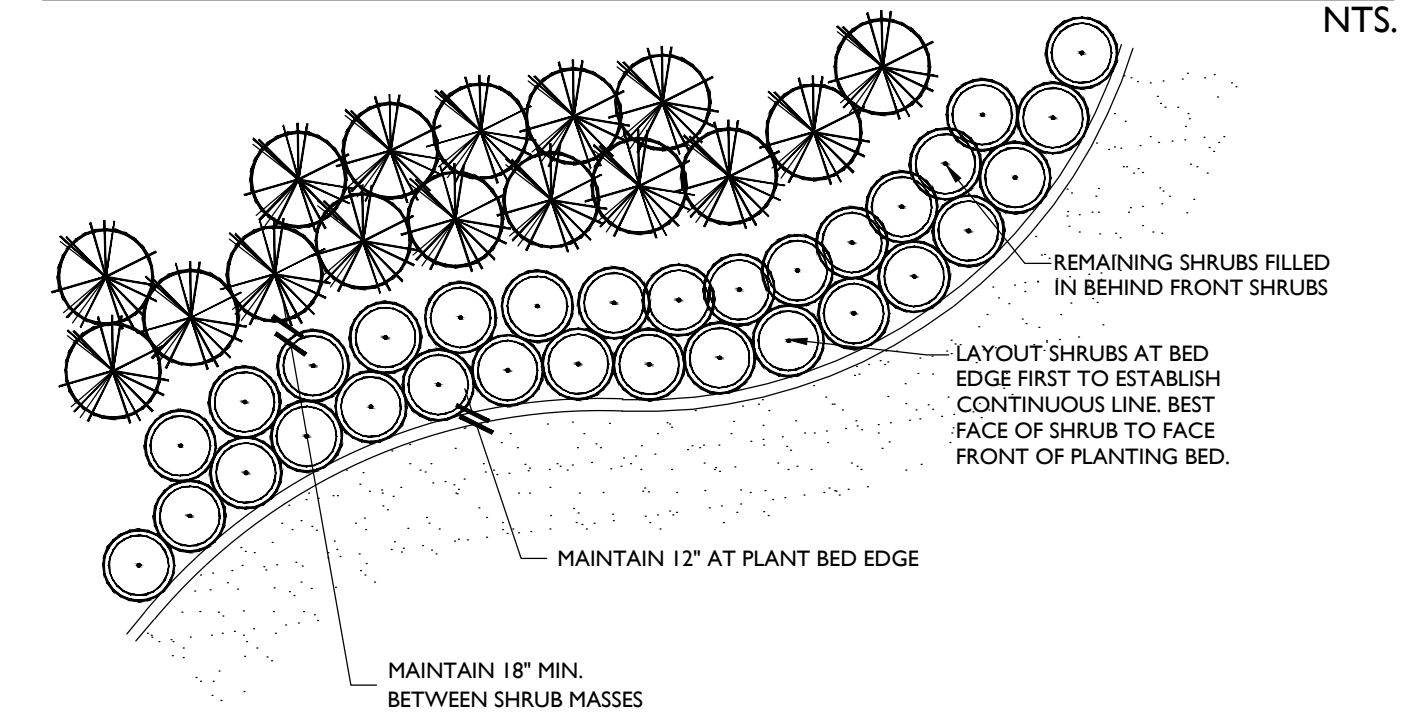
### TYPICAL PLANTING DIAGRAM



### TREE PROTECTION DETAIL



### SHRUB AND GROUND COVER PLANTING DETAIL



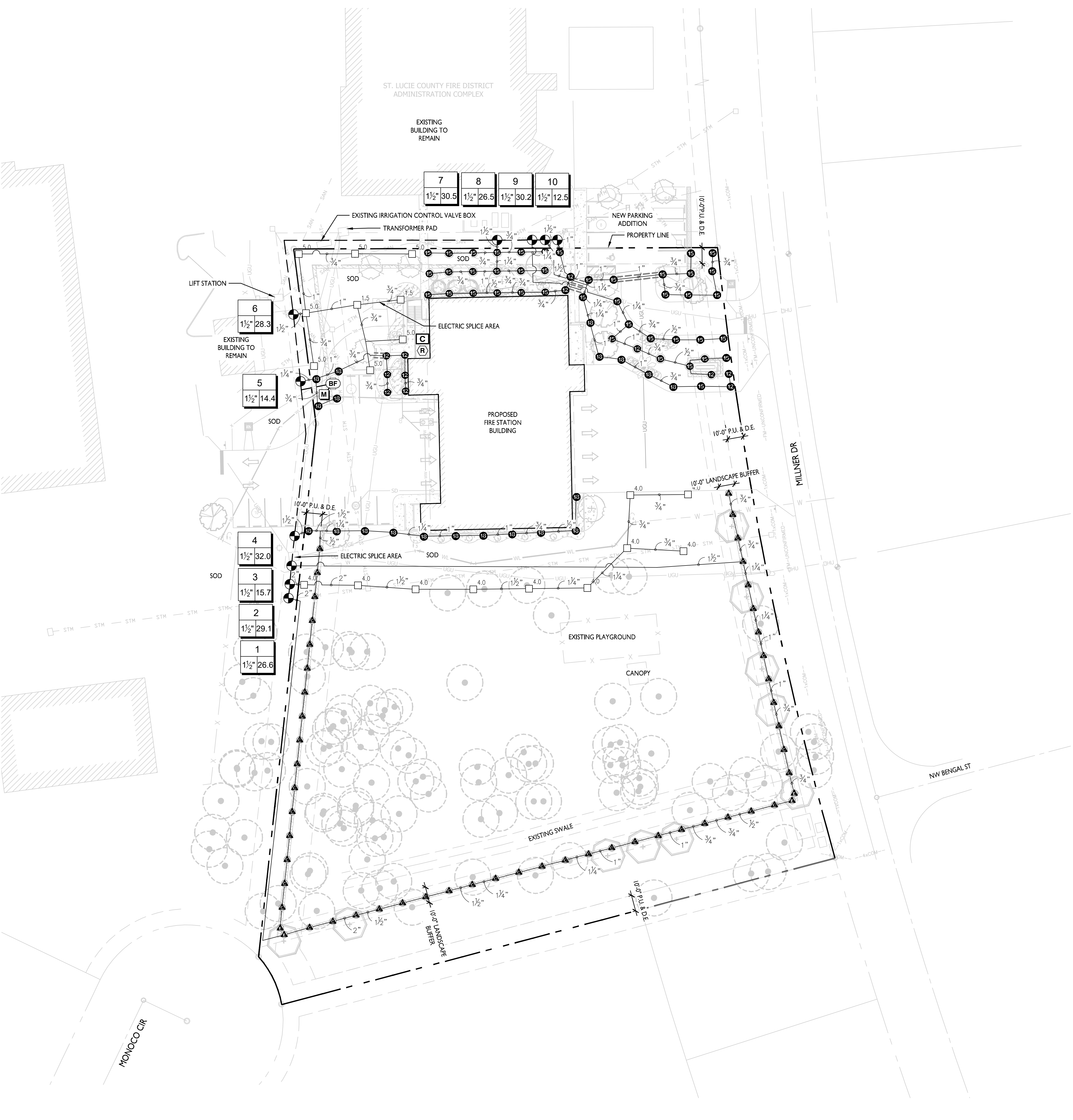
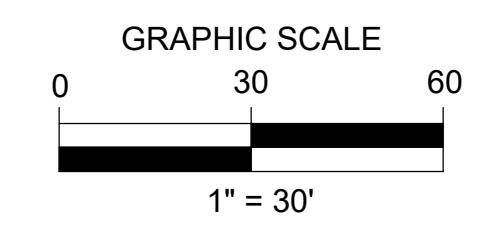
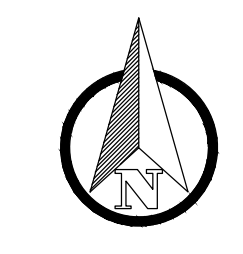
### LANDSCAPE NOTES:

- STRUCTURAL ELEMENTS AND HARDSCAPE FEATURES INDICATED ON LANDSCAPE PLANS ARE FOR INFORMATIONAL PURPOSES ONLY. LANDSCAPE PLANS ARE TO BE UTILIZED FOR LOCATION OF LIVING PLANT MATERIAL ONLY. LANDSCAPE PLANS SHOULD NOT BE UTILIZED FOR STAKING AND LAYOUT OR LOCATION OF ANY STRUCTURAL SITE FEATURES INCLUDING BUT NOT LIMITED TO: BUILDINGS, SIGNAGE, PATHWAYS, EASEMENTS, BERMS, WALL, FENCES, UTILITIES OR ROADWAYS.
- CONTRACTOR SHALL ACQUIRE ALL APPLICABLE FEDERAL, STATE, LOCAL, JURISDICTIONAL OR UTILITY COMPANY PERMITS REQUIRED PRIOR TO REMOVAL, RELOCATION, AND/OR INSTALLATION OF LANDSCAPE MATERIALS INDICATED WITHIN PLAN DOCUMENTS. THE CONTRACTOR SHALL HAVE PERMITS "IN HAND" PRIOR TO STARTING WORK. LANDSCAPE ARCHITECT SHALL BEAR NO RESPONSIBILITY FOR WORK PERFORMED WITHOUT PERMITTED DRAWINGS. THE CONTRACTOR SHALL BE RESPONSIBLE FOR ALL CHANGES TO THE WORK, AT NO ADDITIONAL COST TO THE OWNER, AS A RESULT OF UNAUTHORIZED WORK PRIOR TO RECEIPT OF PERMIT.
- TREES SHOWN ON THIS PLAN ARE FOR GRAPHIC REPRESENTATION ONLY. TREE SPACING IS BASED ON DESIGN REQUIREMENTS AND THE TREES SHOWN ON THESE PLANS ATTEMPT TO ACCOMPLISH THAT SPACING WHILE MAINTAINING THE REQUIRED SETBACKS FROM UTILITIES. IN THE EVENT OF A CONFLICT, AFFECTED PLANT MATERIAL SHALL BE FIELD ADJUSTED WITH THE APPROVAL OF THE LANDSCAPE ARCHITECT TO AVOID CONFLICTS WITH THE WITH EXISTING AND PROPOSED UTILITIES, LIGHT POLES, DRAINAGE STRUCTURES OR LINES, LAKE MAINTENANCE EASEMENTS OR OTHER AFFECTED SITE FEATURES.
- ANY PLANTING WITHIN THE SIGHT TRIANGLES SHALL PROVIDE UNOBSTRUCTED VIEWS AT A LEVEL BETWEEN 30" AND 8' ABOVE THE PAVEMENT.
- ALL UTILITY BOXES/ STRUCTURES TO BE SCREENED ON 3 SIDES W/ APPROVED PLANTING MATERIAL.
- IRRIGATION IS REQUIRED PROVIDING 100% COVERAGE WITH A MAXIMUM OF 50% OVERLAP. AN AUTOMATIC RAIN SENSOR MUST BE INCLUDED.
- ALL PLANT MATERIAL TO BE INSTALLED SHALL CONFORM TO FLORIDA POWER AND LIGHTS' (FPLS) RIGHT TREE RIGHT PLACE GUIDELINES.
- IN CASE OF DISCREPANCIES PLANS TAKE PRECEDENCE OVER PLANT LIST.
- LANDSCAPE CONTRACTOR RESPONSIBLE FOR VERIFICATION OF ALL QUANTITIES PRIOR TO BIDDING.
- REMOVAL OF EXISTING VEGETATION IS RESPONSIBILITY OF LANDSCAPE CONTRACTOR.
- RELOCATION OF EXISTING VEGETATION IS RESPONSIBILITY OF LANDSCAPE CONTRACTOR. REFER TO SPECIFICATIONS FOR RELOCATION INSTRUCTIONS.
- ALL PLANT MATERIAL TO BE FLORIDA GRADE #1 AT TIME OF INSTALLATION UNLESS OTHERWISE NOTED.
- NO LANDSCAPING SHALL BE PLANTED IN A MANNER THAT WOULD ADVERSELY AFFECT UTILITY EASEMENTS. LANDSCAPING SHALL BE IN COMPLIANCE WITH CHAPTER 154 OF THE CITY OF PORT ST. LUCIE CODE OF ORDINANCES, PSLUSD TECHNICAL SPECIFICATIONS AND POLICIES.
- ALL LANDSCAPING WITHIN CITY UTILITY EASEMENTS SHALL COMPLY WITH PSLUSD TECHNICAL SPECIFICATIONS, POLICIES, AND CODES.
- ALL LANDSCAPING SHALL MEET THE LATEST PSLUSD LANDSCAPE POLICY AND SHALL NOT BE PLACED IN A MANNER THAT WOULD CREATE CONFLICTS WITH THE INTENDED OPERATION AND MAINTENANCE OF ANY EXISTING UTILITY.
- TREES SHALL NOT BE PLANTED WITHIN TEN (10) FEET OF ANY PSLUSD UNDERGROUND INFRASTRUCTURE.
- NO LANDSCAPING OTHER THAN SOD GRASSES SHALL BE LOCATED WITHIN 5' OF A PSLUSD APPURTENANCE SUCH AS A WATER METER ASSEMBLY, BACKFLOW DEVICE, FIRE HYDRANT OR SEWER CLEANOUT, ETC.

### PLANT SCHEDULE

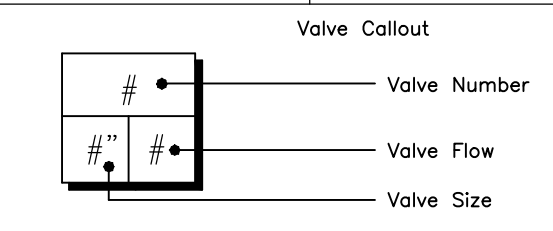
TREES	CODE	QTY	COMMON NAME	BOTANICAL NAME	REMARKS
	BA	5	Verawood	Bulnesia arborea	12' HT. X 5' SPRD. MIN., 2" CAL
	CE	3	Buttonwood	Conocarpus erectus	8' HT. X 3' SPRD. MIN., 1.5" CAL
	IC	7	Dahoon Holly	Ilex cassine	12' HT. X 5' SPRD. MIN., 2.5" CAL
	QV	10	Southern Live Oak	Quercus virginiana	12' HT MIN., 5' SPRD MIN., 3" CAL.
MITIGATION PALM	CODE	QTY	COMMON NAME	BOTANICAL NAME	REMARKS
	SS-M	2	Cabbage Palmetto	Sabal palmetto	10' CT
PALMS	CODE	QTY	COMMON NAME	BOTANICAL NAME	REMARKS
	TR	3	Florida Thatch Palm	Thrinax radiata	8' OA.
	VM	1	Montgomery Palm	Veitchia montgomeryana	DOUBLE TRUNK; 10' CT
SHRUBS	CODE	QTY	COMMON NAME	BOTANICAL NAME	REMARKS
	BG	7	Yesterday, Today, and Tomorrow	Brunfelsia grandiflora	36" HT X 36" SPRD. MULTI-TRUNK
	CP	12	Petra Croton	Codiaeum variegatum 'Petra'	36" HT X 36" SPRD. FULL, LOW BRANCHED
	SR	8	Saw Palmetto	Serenoa repens	36" HT X 36" SPRD
SHRUB AREAS	CODE	QTY	COMMON NAME	BOTANICAL NAME	REMARKS
	CH	605	Horizontalis Cocoplum	Chrysobalanus icaco 'Horizontalis'	24" HT. X 24" SPRD. @ 24" O.C.
	EE	124	Elliott's Love Grass	Eragrostis elliotii	24" HT x 24" SPRD @ 24" O.C.
	FG	33	Green Island Ficus	Ficus microcarpa 'Green Island'	24" HT x 24" SPRD. @ 24" O.C.
	HN	73	Dwarf Firebush	Hamelia nodosa	24" HT. X 24" SPRD. @ 24" O.C.
	SJ	205	Blue Porterweed	Stachytarpheta jamaicensis	24" HT x 24" SPRD @ 24" O.C
	TD2	98	Dwarf Fakahatchee	Tripsacum floridana	24" HT x 24" SPRD @ 36" O.C
GROUND COVERS	CODE	QTY	COMMON NAME	BOTANICAL NAME	REMARKS
	EL	43	Golden Creeper	Ernodea littoralis	18" HT x 18" SPRD @ 18" O.C





**IRRIGATION SCHEDULE OVERALL**

SYMBOL	MANUFACTURER/MODEL/DESCRIPTION	QTY
▲ ▲ ▲ ▲ ▲ ▲ ▲ ▲ ▲ ▲ EST LCS RCS CST SST	Rain Bird 1812 15 Strip Series Shrub Spray 12in. Pop-Up Sprinkler with Co-Molded Wiper Seal. Side and Bottom Inlet. 1/2in. NPT Female Threaded Inlet.	54
Ⓠ Ⓡ Ⓢ Ⓣ Ⓤ Ⓥ Ⓦ Ⓧ Ⓨ Ⓩ	Rain Bird 1812 12 Series MPR Shrub Spray 12in. Pop-Up Sprinkler with Co-Molded Wiper Seal. Side and Bottom Inlet. 1/2in. NPT Female Threaded Inlet.	8
Ⓠ Ⓡ Ⓢ Ⓣ Ⓤ Ⓥ Ⓦ Ⓧ Ⓨ Ⓩ	Rain Bird 1812 15 Series MPR Shrub Spray 12in. Pop-Up Sprinkler with Co-Molded Wiper Seal. Side and Bottom Inlet. 1/2in. NPT Female Threaded Inlet.	22
Ⓠ Ⓡ Ⓢ Ⓣ Ⓤ Ⓥ Ⓦ Ⓧ Ⓨ Ⓩ	Rain Bird 1812 ADJ Shrub Spray 12in. Pop-Up Sprinkler with Co-Molded Wiper Seal. Side and Bottom Inlet. 1/2in. NPT Female Threaded Inlet.	44
SYMBOL	MANUFACTURER/MODEL/DESCRIPTION	QTY
□	Rain Bird 5004-PC, FC 1.5 Turf Rotor, 4.0" Pop-Up, Plastic Riser. Adjustable and Full Circle. Standard Angle Nozzle.	2
□	Rain Bird 5004-PC, FC 4.0 Turf Rotor, 4.0" Pop-Up, Plastic Riser. Adjustable and Full Circle. Standard Angle Nozzle.	10
□	Rain Bird 5004-PC, FC 5.0 Turf Rotor, 4.0" Pop-Up, Plastic Riser. Adjustable and Full Circle. Standard Angle Nozzle.	7
SYMBOL	MANUFACTURER/MODEL/DESCRIPTION	QTY
⊗	Rain Bird PEB 1-1/2in. Plastic Industrial Valves. Low Flow Operating Capability, Globe Configuration.	10
Ⓡ	Watts U009 1-1/2" Reduced Pressure Backflow Preventer	1
Ⓢ	Rain Bird ESPLXME2 12 Station Traditionally-Wired, Commercial Controller. Indoor/Outdoor, Plastic Wall-Mount Enclosure.	1
Ⓡ	Rain Bird RSD-CEX Rain Sensing Device, conduit mount. With threaded adapter, extension wire.	1
Ⓜ	Water Meter 2" Refer to Civil Plans	1
---	Irrigation Lateral Line: PVC Class 160 SDR 26	3,196 l.f.
---	Irrigation Mainline: 1 1/2" PVC Schedule 40	424.1 l.f.
---	Pipe Sleeve: PVC Schedule 40	46.1 l.f.



**VALVE SCHEDULE**

NUMBER	MODEL	SIZE	TYPE	GPM	WIRE	PSI	PRECIP
1	Rain Bird PEB	1-1/2"	Shrub Spray	26.63	420.2	37.5	1.73 in/h
2	Rain Bird PEB	1-1/2"	Turf Rotor	29.1	411.5	32.8	0.3 in/h
3	Rain Bird PEB	1-1/2"	Shrub Spray	15.74	399.9	37.7	1.89 in/h
4	Rain Bird PEB	1-1/2"	Shrub Spray	31.96	381.3	38.2	0.82 in/h
5	Rain Bird PEB	1-1/2"	Shrub Spray	14.39	284.1	35.5	1.06 in/h
6	Rain Bird PEB	1-1/2"	Turf Rotor	28.28	242.2	32.8	0.78 in/h
7	Rain Bird PEB	1-1/2"	Shrub Spray	30.52	175.7	35.2	1.16 in/h
8	Rain Bird PEB	1-1/2"	Shrub Spray	26.5	197.5	39.2	0.93 in/h
9	Rain Bird PEB	1-1/2"	Shrub Spray	30.16	205.6	38.4	0.92 in/h
10	Rain Bird PEB	1-1/2"	Shrub Spray	12.52	213.4	37.0	0.8 in/h
	Common Wire				424.1		

**NOTE:**  
 THE MINIMUM SEPARATION BETWEEN PSLUSD MAINS AND OTHER UTILITIES, AS MEASURED FROM THE OUTSIDE OF EACH PIPE, SHALL BE AS FOLLOWS:  
 - WATER MAINS SHALL BE LOCATED A MINIMUM OF 10' FROM A GRAVITY SEWER, FORCE MAIN AND RECLAIMED WATER MAIN.  
 - THE VERTICAL SEPARATION SHALL BE AT LEAST 18" WITH THE WATER MAIN CROSSING OVER THE OTHER PIPES.  
 - ALL PSLUSD PIPES SHALL HAVE A MINIMUM HORIZONTAL SEPARATION OF 5' FROM ALL OTHER UNDERGROUND UTILITIES AND A VERTICAL SEPARATION OF AT LEAST 18".  
 - WHEN GRAVITY SEWER, FORCE MAIN, OR RECLAIMED WATER MAIN IS TO BE INSTALLED PARALLEL TO A DRAINAGE PIPE, A MINIMUM HORIZONTAL SEPARATION OF 10' IS DESIRED. A GREATER SEPARATION MAY BE REQUIRED FOR DRAINAGE PIPES LARGER THAN 48" IN DIAMETER. (USM PAGE 15, LINE 45)

**Wannemacher Jensen Architects, Inc.**  
 132 Mirror Lake Drive N. Unit 301  
 St. Petersburg, Florida 33701-3214  
 (727) 822-5566  
 www.wjarc.com  
 AR94244  
 ©Wannemacher Jensen Architects, Inc.

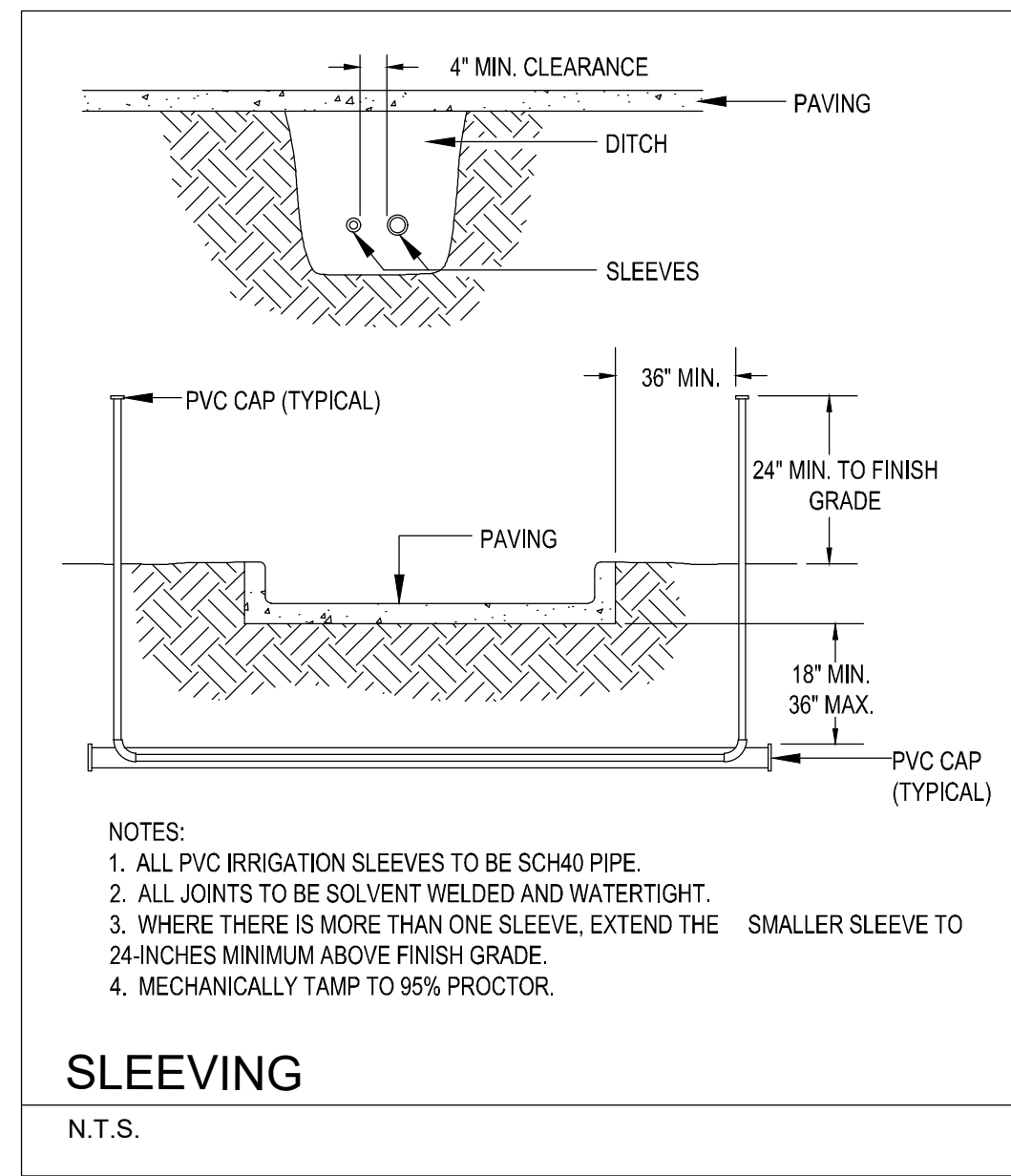
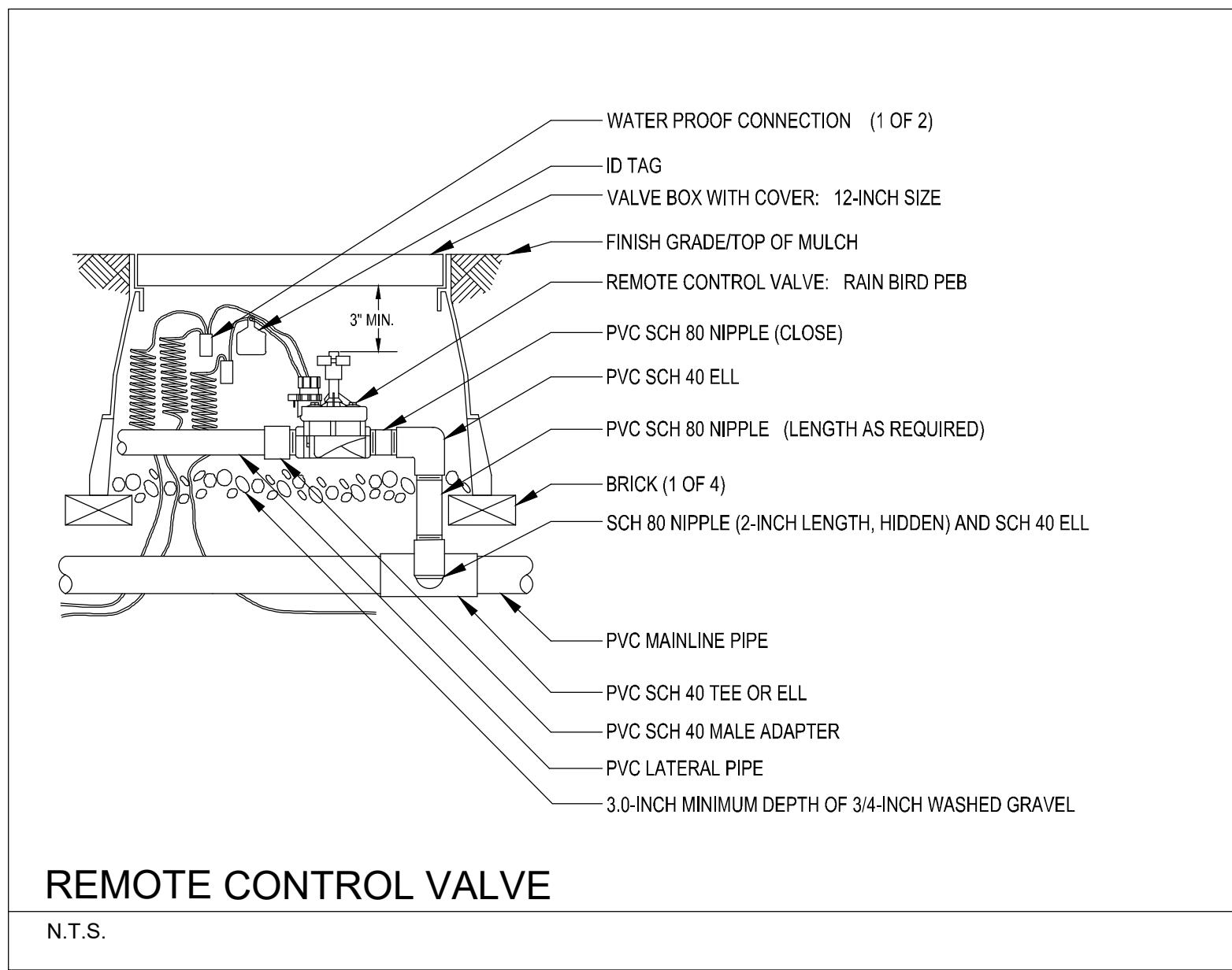
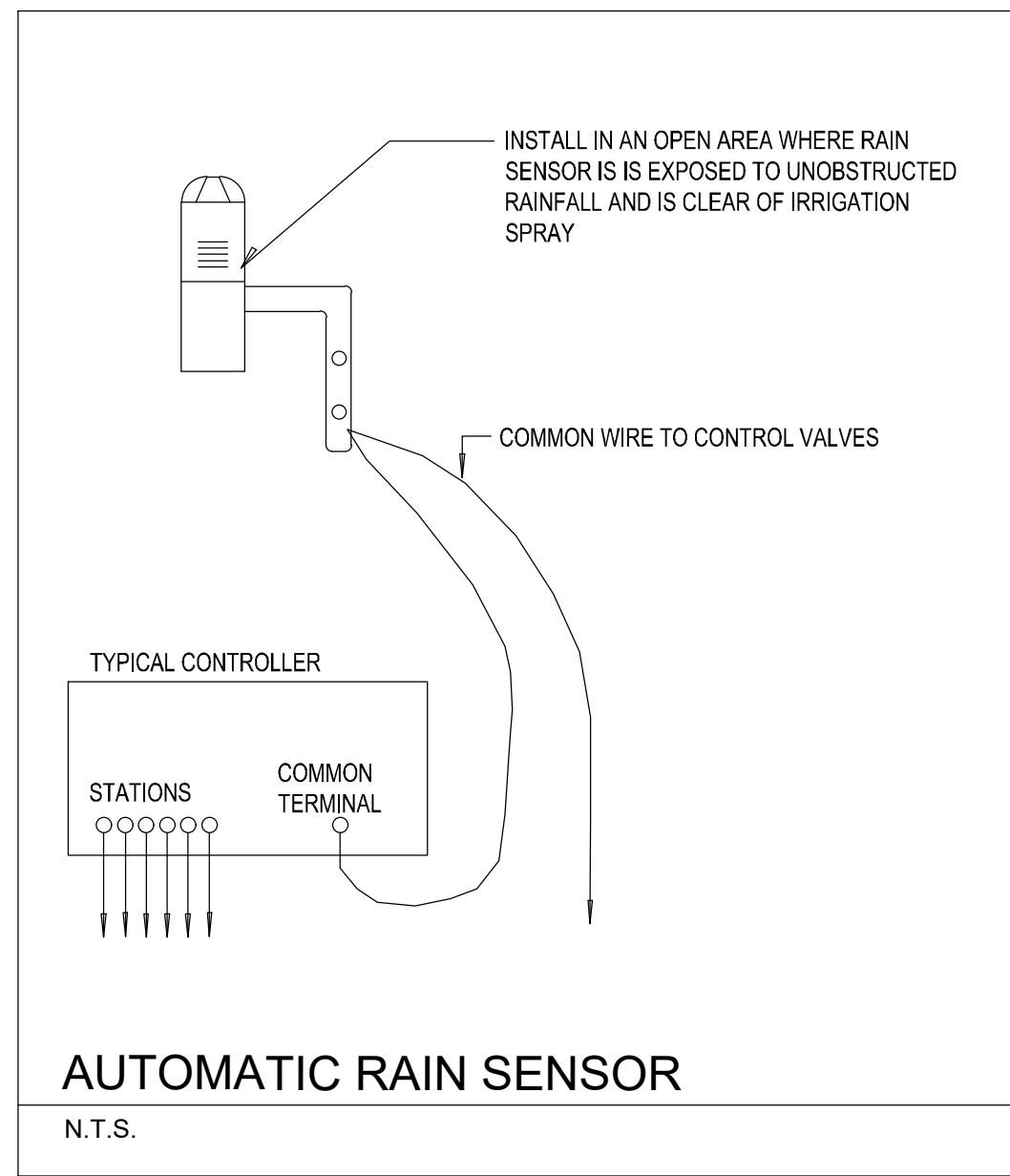
**WGL**  
 2035 Vista Parkway, West Palm Beach, FL 33411  
 Phone No. 866.909.2220 www.wginc.com  
 Cert No. 6091 - LB No. 7055

**ST. LUCIE MILNER DR. FIRE STATION**  
 ST. LUCIE COUNTY FIRE DISTRICT  
 5160 NW MILNER DR. PORT ST. LUCIE, FL 34983

Project number  
**2241**  
 DISTRIBUTION

MILESTONE	DATE
PERMIT SET	04/13/23
PERMIT SET REVISION	08/11/23
PERMIT SET REVISION	09/08/23

IRRIGATION PLAN  
 P07-002-A1  
 PSLUSD #5002-21  
**IP-100**



#### IRRIGATION NOTES

#### SYSTEM DESCRIPTION

A NEW 2" METER TO SERVICE THE BUFFERS, FOUNDATION PLANTINGS AND PARKING AREAS.

#### WORK

THE IRRIGATION CONTRACTOR SHALL BE CERTIFIED AS A CERTIFIED IRRIGATION CONTRACTOR BY THE IRRIGATION ASSOCIATION. SUBMIT CERTIFICATION TO THE OWNER'S REPRESENTATIVE PRIOR TO PRE-CONSTRUCTION MEETING.

FOLLOW THESE NOTES IN ADDITION TO CITY AND COUNTY REQUIREMENTS AND DESIGN STANDARDS. IMMEDIATELY NOTIFY THE OWNER'S REPRESENTATIVE OF ANY CONFLICTS BETWEEN THE PLANS AND CITY/COUNTY REQUIREMENTS.

VERIFY SITE CONDITIONS BEFORE BIDDING. INSTALLATIONS MAY REQUIRE ADDITIONAL EQUIPMENT FOR SPECIFIC SITE CONDITIONS. INCLUDE ALL COSTS TO COMPLETE THE SCOPE OF WORK IN BID.

INCLUDE ALL REQUIRED PERMIT FEES IN BID. OBTAIN ALL REQUIRED PERMITS AT NO ADDITIONAL CHARGE.

IMMEDIATELY REPAIR AND/OR REPLACE ANY ITEM DAMAGED BY CONSTRUCTION OF THE IRRIGATION SYSTEM AT NO CHARGE.

GUARANTEE MATERIALS AND WORKMANSHIP FOR ONE-YEAR FROM FINAL ACCEPTANCE. CORRECT DEFICIENCIES AT NO CHARGE

#### INSTALLATIONS

PROVIDE MANUFACTURER CUT SHEETS FOR EVERY ITEM TO BE INSTALLED FOR APPROVAL.

PROVIDE ONLY NEW EQUIPMENT AND AS SPECIFIED WITHIN THE PLANS. ANY IRRIGATION SUBSTITUTIONS TO BE APPROVED BY LANDSCAPE ARCHITECT.

ELECTRICAL SERVICE CONNECTIONS AND REQUIREMENTS INDICATED WITHIN THE PLANS ARE PRIOR TO ELECTRICAL PROVIDERS DESIGN. COORDINATE FINAL ELECTRICAL DESIGN REQUIREMENTS WITH THE ELECTRICAL PROVIDER PRIOR TO BID. PROVIDE ANY ADDITIONAL REQUIRED EQUIPMENT AT NO ADDITIONAL COST.

ELECTRICAL SERVICE CONNECTIONS AND ALL OTHER ELECTRICAL WORK IS TO COMPLY WITH THE NATIONAL ELECTRICAL CODE AND ANY OTHER APPLICABLE ELECTRICAL CODES, LAWS AND REGULATIONS. COORDINATE ELECTRICAL SERVICE CONNECTION WITH THE ELECTRICAL PROVIDER. PERFORM ELECTRICAL SERVICE CONNECTIONS BY A LICENSED ELECTRICIAN.

CONTROLLER AND PUMP STATION GROUNDING: 10 OHMS RESISTANCE MAXIMUM. PROVIDE CERTIFICATION FROM THE ELECTRICIAN SHOWING THE DATE OF TEST, CONTROLLER LOCATION/IDENTIFICATION AND TEST RESULTS.

#### PLAN ADJUSTMENTS:

PLAN LAYOUT IS SCHEMATIC FOR GRAPHIC CLARITY. INSTALL IN PERVIOUS AREAS, EXCEPT WHERE SLEEVING IS SHOWN.

#### TRENCHING AND PIPE INSTALLATION:

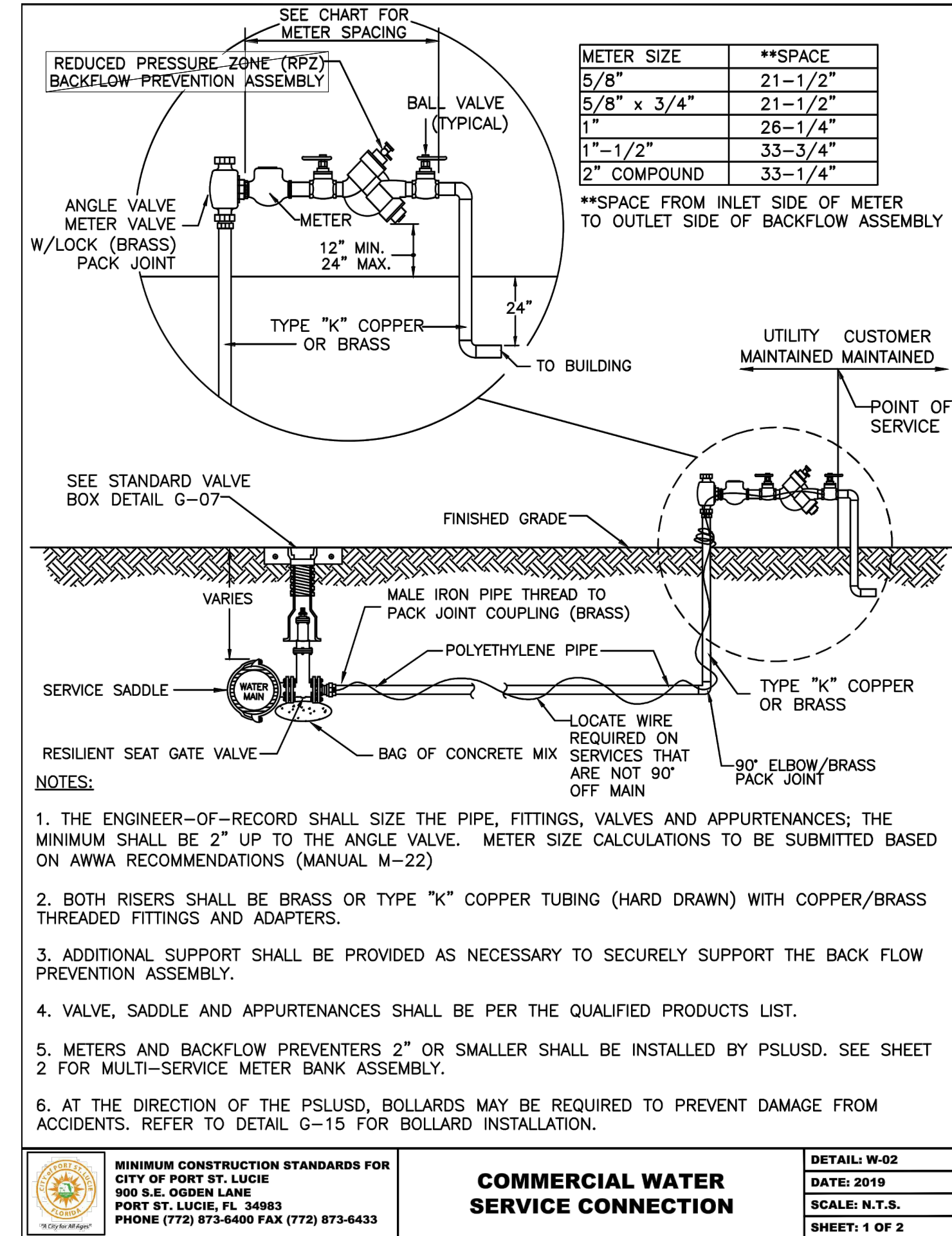
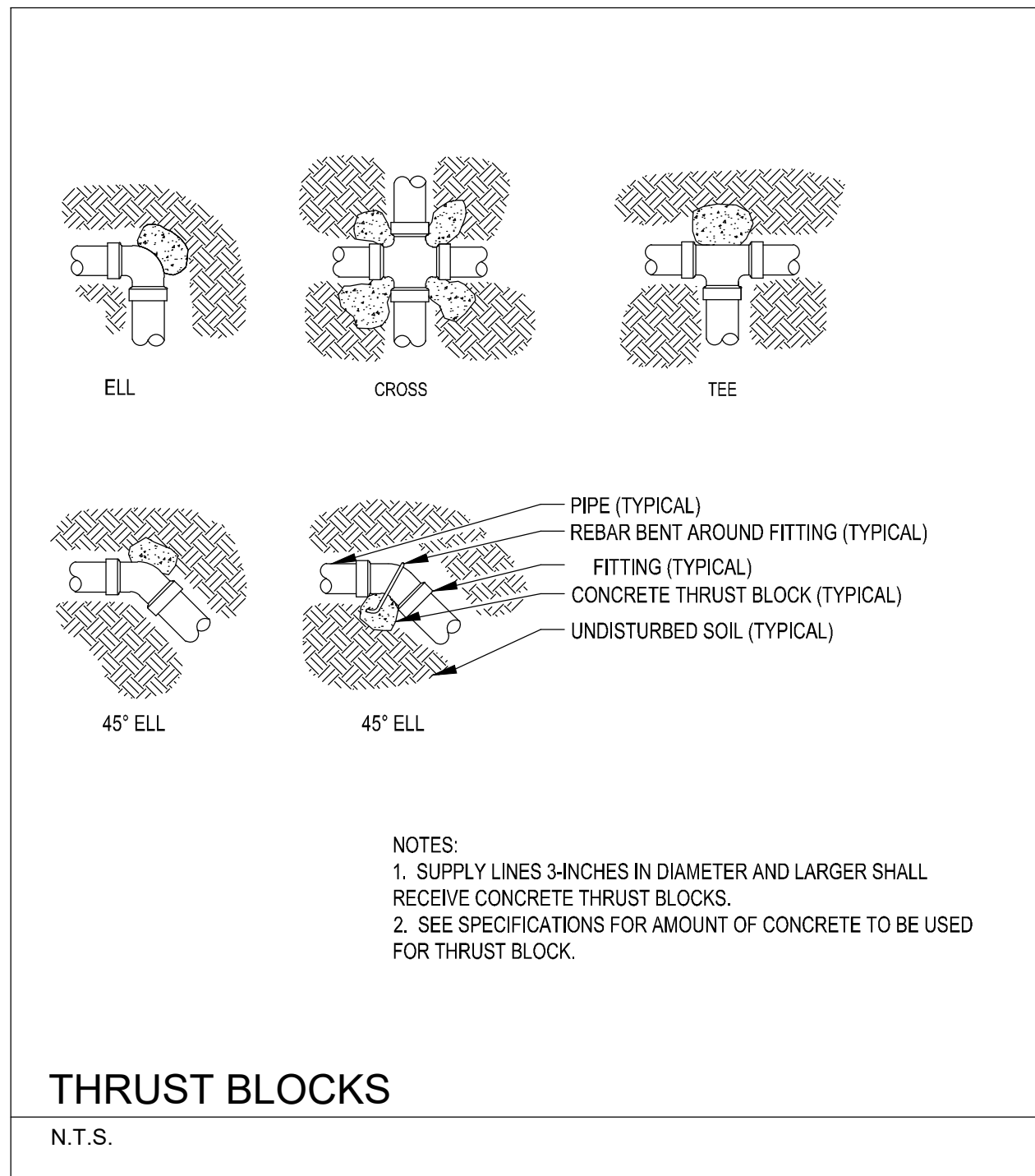
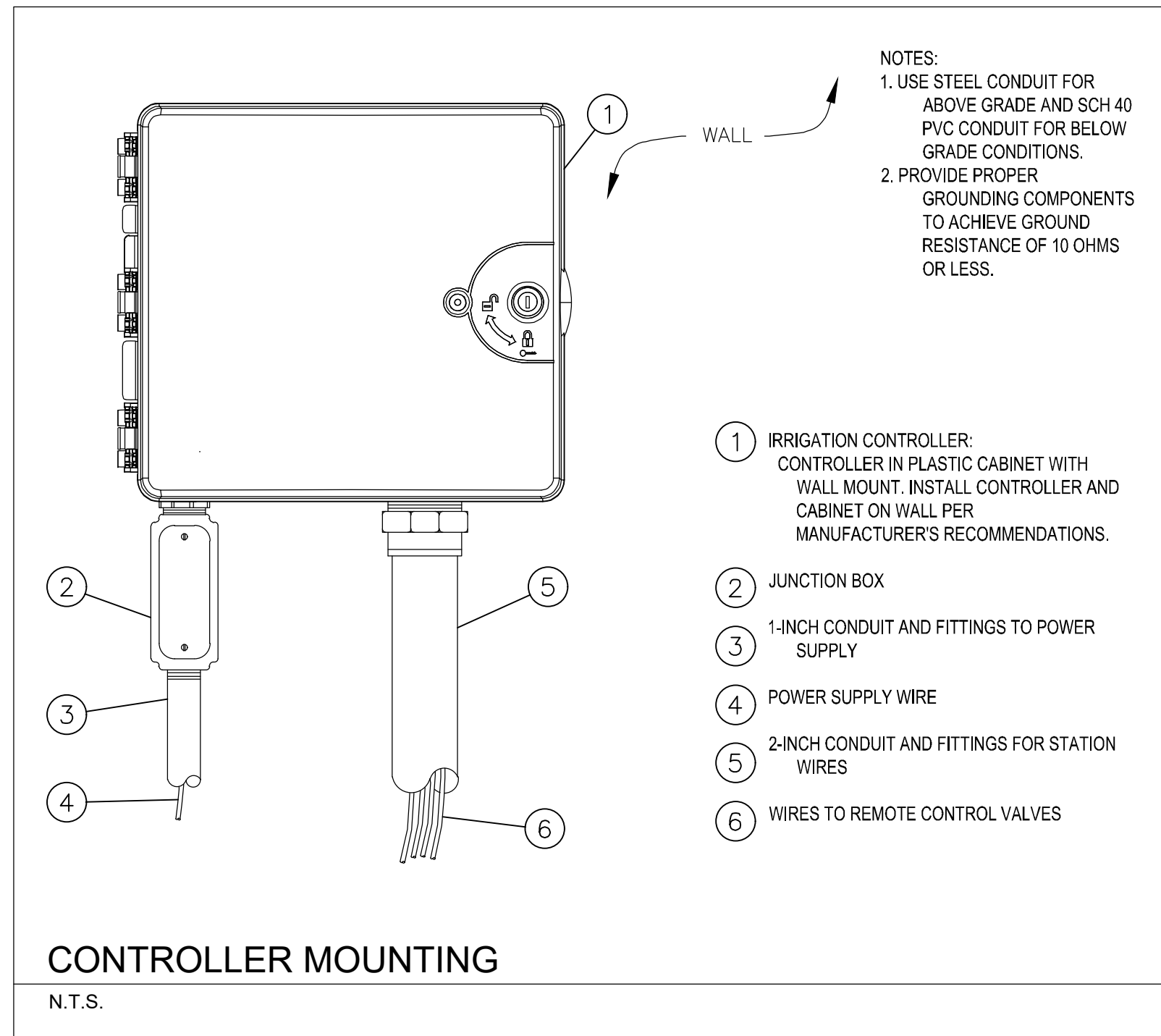
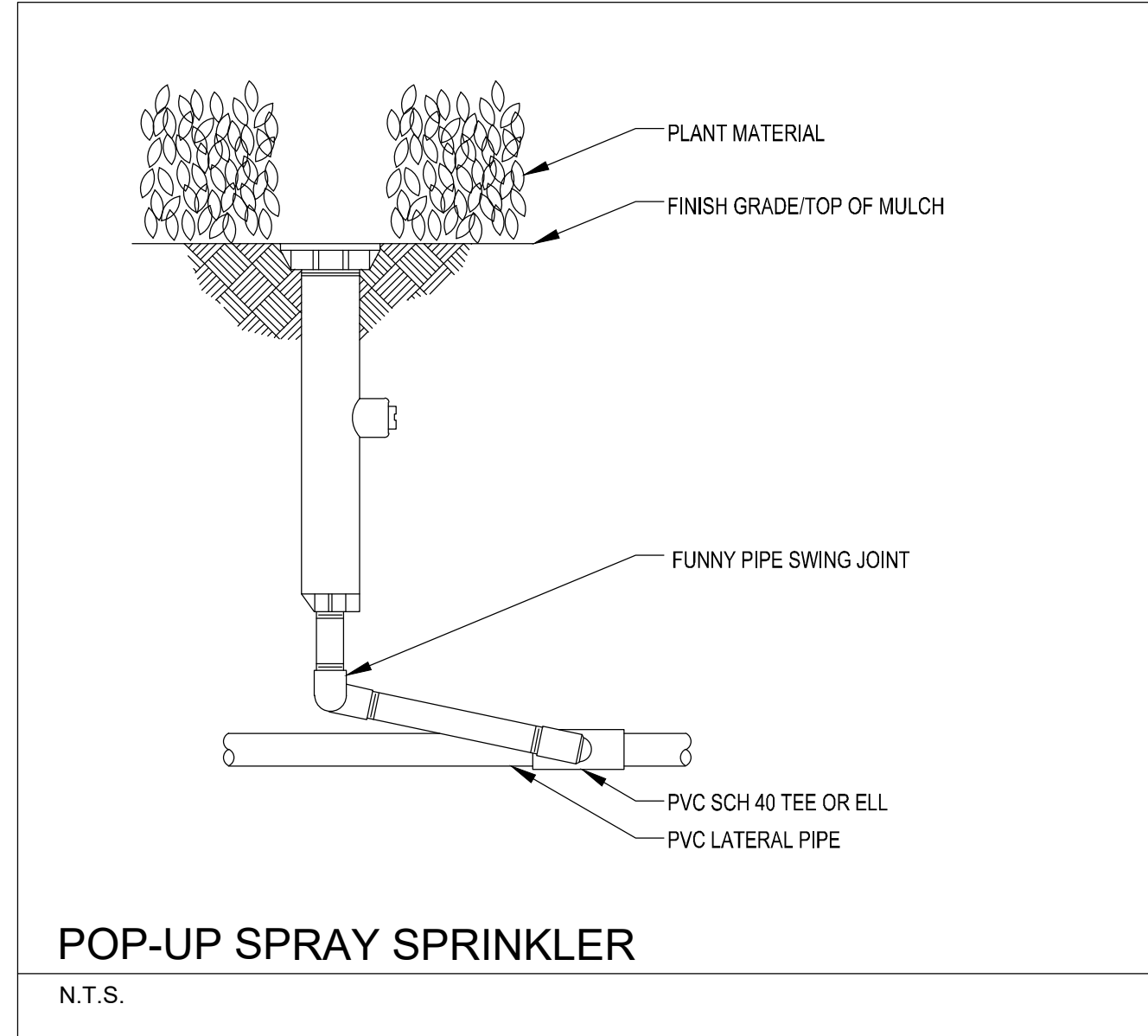
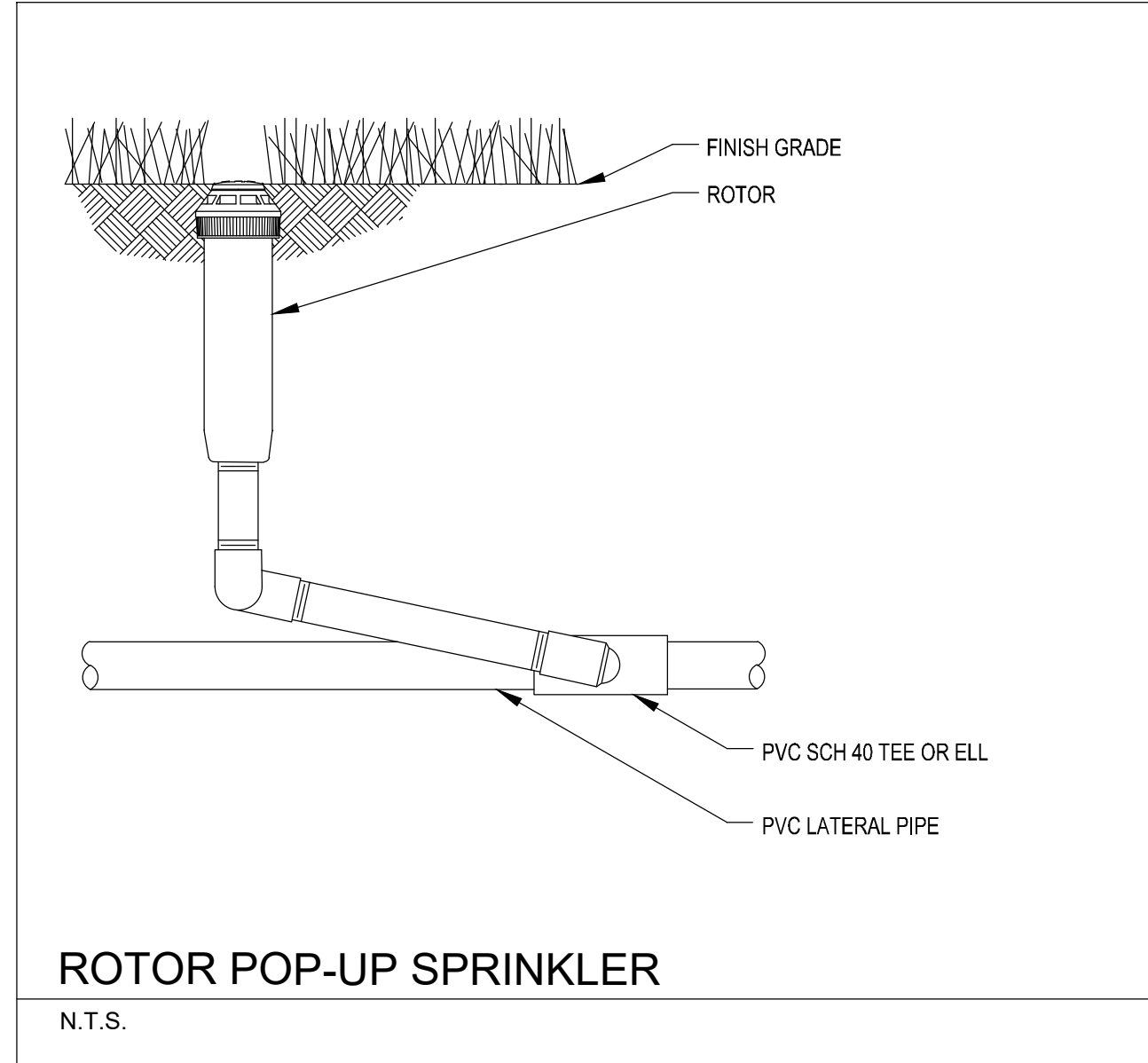
INSTALL PIPE ON A STABLE FOUNDATION. IF NECESSARY, REMOVE UNSTABLE SOIL OR MUCK FROM THE TRENCH BOTTOM AND INSTALL A 6 INCH FOUNDATION OF COMPACTED CLASS 1 BEDDING MATERIAL. REMOVE WATER FROM THE TRENCH BEFORE BACKFILLING. EXCAVATE 6 INCHES BELOW THE PIPE BOTTOM WHEN TRENCHING THROUGH ROCK AND INSTALL CLASS 1 BEDDING MATERIAL. BACKFILL TRENCHES AND COMPACT TO FINISHED

SLEEVE CHART	
PIPE SIZE	SLEEVE SIZE
3/4"	2 1/2"
1"	3"
1 1/4"	3"
1 1/2"	4"
2"	4"
2 1/2"	6"
3"	6"
4"	8"
6"	10"
8"	12"

Depth of coverage per Florida Building Code amended appendix F	
FOR NONTRAFFIC AND NONCULTIVATED AREAS:	
Pipe Diameter	Minimum depth of Cover
1/2" through 1 1/2"	6" - 12"
1 1/2" through 2"	12" - 18"
2 1/2" through 3"	18" - 24"
6" and larger	24" - 36"
FOR VEHICLE TRAFFIC AREAS:	
Pipe Diameter	Minimum depth of Cover
1/2" through 2 1/2"	18" - 24"
3" through 5"	24" - 30"
6" and larger	30" - 36"

### DEPTH OF COVERAGE

N.T.S.



2035 Vista Parkway, West Palm Beach, FL 33411  
Phone No. 888.909.2220 www.wginc.com  
Cert No. 6091 - LB No. 7095

**ST. LUCIE MILNER DR. FIRE STATION**

**ST. LUCIE COUNTY FIRE DISTRICT**

5160 NW MILNER DR. PORT ST. LUCIE, FL 34983

Project number  
**2241**

DISTRIBUTION

MILESTONE	DATE
PERMIT SET	04/13/23
PERMIT SET REVISION	08/11/23
PERMIT SET REVISION	09/08/23

IRRIGATION DETAILS  
P07-002-A1  
PSLUSD #5002-21  
**IP-200**

**Wannemacher Jensen Architects, Inc.**

132 Mirror Lake Drive N. Unit 301  
St. Petersburg, Florida 33701-3214  
www.wjarc.com  
(727) 822-5566  
AIA 94244

©Wannemacher Jensen Architects, Inc.

THESE PLANS HAVE BEEN PREPARED BY AN ARCHITECT OR ARCHITECTURAL FIRM REGISTERED IN THE STATE OF FLORIDA. THE ARCHITECT OR ARCHITECTURAL FIRM HAS REVIEWED THE PLANS AND HAS FOUND THEM TO BE IN ACCORDANCE WITH THE BUILDING CODES AND REGULATIONS OF THE STATE OF FLORIDA. THE ARCHITECT OR ARCHITECTURAL FIRM HAS REVIEWED THE PLANS AND HAS FOUND THEM TO BE IN ACCORDANCE WITH THE BUILDING CODES AND REGULATIONS OF THE STATE OF FLORIDA. THE ARCHITECT OR ARCHITECTURAL FIRM HAS REVIEWED THE PLANS AND HAS FOUND THEM TO BE IN ACCORDANCE WITH THE BUILDING CODES AND REGULATIONS OF THE STATE OF FLORIDA.